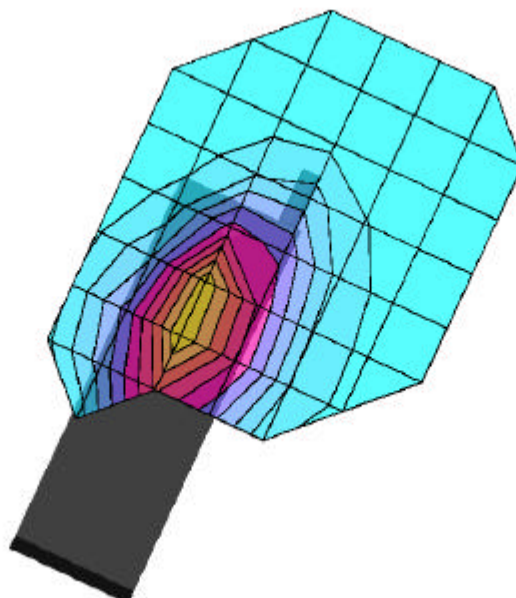


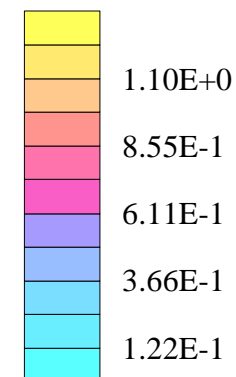
# SANYO FCC ID:AEZSCP-47H -- FM Head SAR

Generic Twin Phantom; Left Hand Section; Probe: ET3DV6 - SN1560 -- Probe Cal Date 20/02/01  
Med. Parameters 835 MHz Brain:  $\sigma = 0.90$  mho/m  $\epsilon_r = 41.5$   $\rho = 1.00$  g/cm<sup>3</sup>; Antenna Position -- In; Crest Factor 1.0  
**SAR (1g): 1.34 mW/g, SAR (10g): 0.908 mW/g**

SANYO DualBand Model:SCP-4700  
FM Mode, Ch.0991 [824.04MHz]  
Conducted Power = 26.0dBm  
Test Date -- 06/04/2001



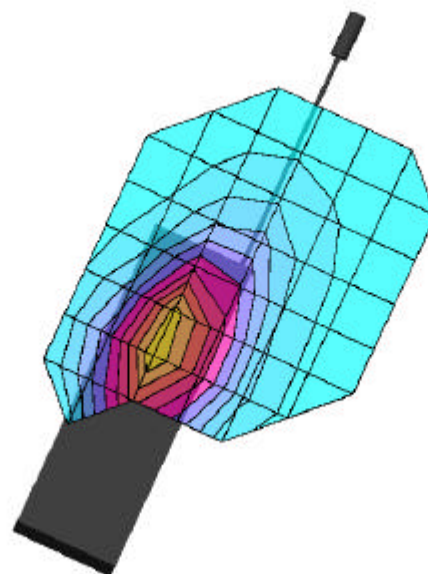
SAR<sub>Tot</sub> [mW/g]



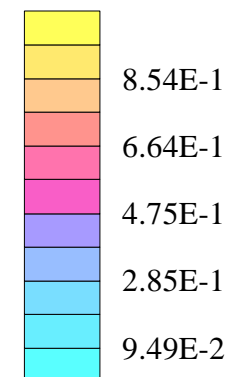
# SANYO FCC ID:AEZSCP-47H -- FM Head SAR

Generic Twin Phantom; Left Hand Section; Probe: ET3DV6 - SN1560 -- Probe Cal Date 20/02/01  
Med. Parameters 835 MHz Brain:  $\sigma = 0.90$  mho/m  $\epsilon_r = 41.5$   $\rho = 1.00$  g/cm<sup>3</sup>; Antenna Position -- Out; Crest Factor 1.0  
SAR (1g): 1.02 mW/g, SAR (10g): 0.701 mW/g

SANYO DualBand Model:SCP-4700  
FM Mode, Ch.0991 [824.04MHz]  
Conducted Power = 26.0dBm  
Test Date -- 06/04/2001



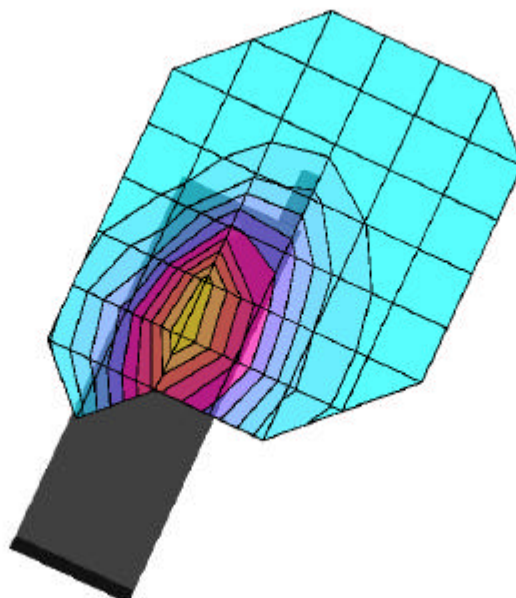
SAR<sub>Tot</sub> [mW/g]



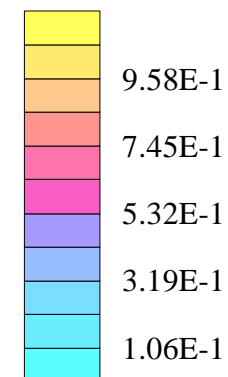
# SANYO FCC ID:AEZSCP-47H -- FM Head SAR

Generic Twin Phantom; Left Hand Section; Probe: ET3DV6 - SN1560 -- Probe Cal Date 20/02/01  
Med. Parameters 835 MHz Brain:  $\sigma = 0.90$  mho/m  $\epsilon_r = 41.5$   $\rho = 1.00$  g/cm<sup>3</sup>; Antenna Position -- In; Crest Factor 1.0  
**SAR (1g): 1.13 mW/g**, SAR (10g): 0.766 mW/g

SANYO DualBand Model:SCP-4700  
FM Mode, Ch.0383 [836.49MHz]  
Conducted Power = 26.0dBm  
Test Date -- 06/04/2001



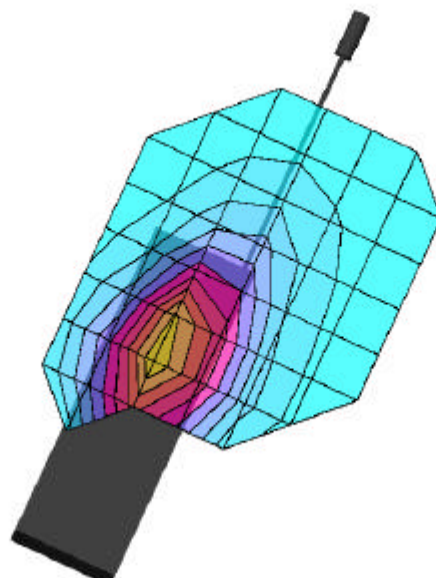
SAR<sub>Tot</sub> [mW/g]



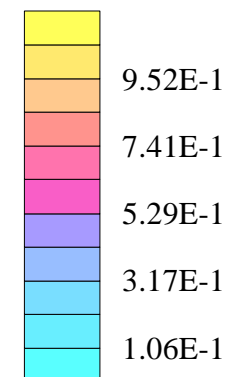
# SANYO FCC ID:AEZSCP-47H -- FM Head SAR

Generic Twin Phantom; Left Hand Section; Probe: ET3DV6 - SN1560 -- Probe Cal Date 20/02/01  
Med. Parameters 835 MHz Brain:  $\sigma = 0.90$  mho/m  $\epsilon_r = 41.5$   $\rho = 1.00$  g/cm<sup>3</sup>; Antenna Position -- Out; Crest Factor 1.0  
**SAR (1g): 1.16 mW/g, SAR (10g): 0.794 mW/g**

SANYO DualBand Model:SCP-4700  
FM Mode, Ch.0383 [836.49MHz]  
Conducted Power = 26.0dBm  
Test Date -- 06/04/2001



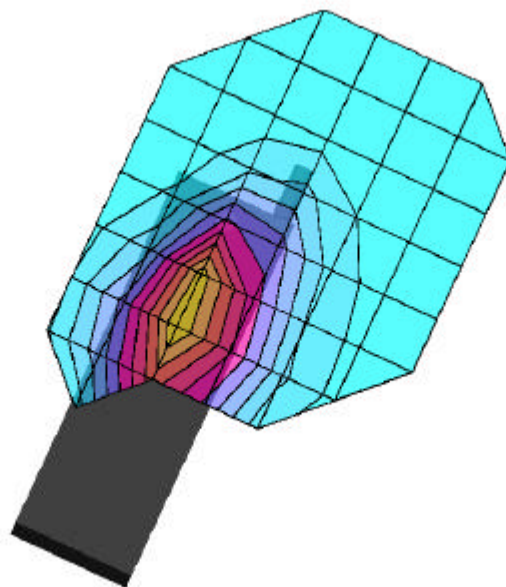
SAR<sub>Tot</sub> [mW/g]



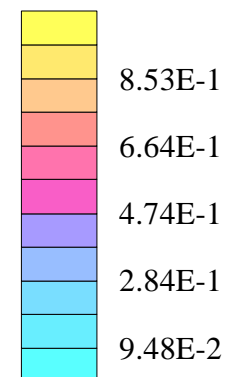
# SANYO FCC ID:AEZSCP-47H -- FM Head SAR

Generic Twin Phantom; Left Hand Section; Probe: ET3DV6 - SN1560 -- Probe Cal Date 20/02/01  
Med. Parameters 835 MHz Brain:  $\sigma = 0.90$  mho/m  $\epsilon_r = 41.5$   $\rho = 1.00$  g/cm<sup>3</sup>; Antenna Position -- In; Crest Factor 1.0  
**SAR (1g): 1.02 mW/g, SAR (10g): 0.698 mW/g**

SANYO DualBand Model:SCP-4700  
FM Mode, Ch.0799 [848.97MHz]  
Conducted Power = 26.0dBm  
Test Date -- 06/04/2001



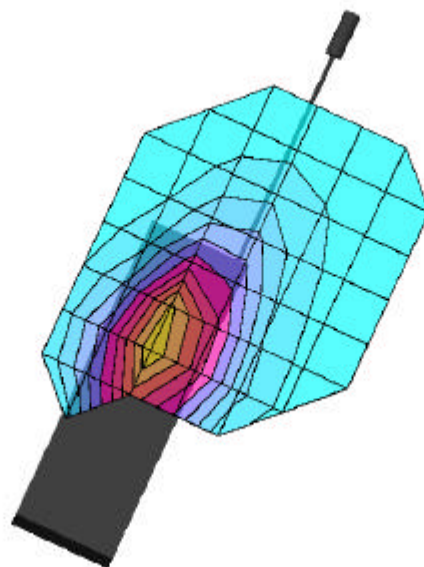
SAR<sub>Tot</sub> [mW/g]



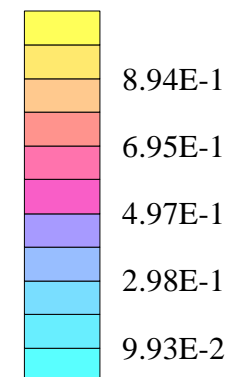
# SANYO FCC ID:AEZSCP-47H -- FM Head SAR

Generic Twin Phantom; Left Hand Section; Probe: ET3DV6 - SN1560 -- Probe Cal Date 20/02/01  
Med. Parameters 835 MHz Brain:  $\sigma = 0.90$  mho/m  $\epsilon_r = 41.5$   $\rho = 1.00$  g/cm<sup>3</sup>; Antenna Position -- Out; Crest Factor 1.0  
**SAR (1g): 1.04 mW/g, SAR (10g): 0.722 mW/g**

SANYO DualBand Model:SCP-4700  
FM Mode, Ch.0799 [848.97MHz]  
Conducted Power = 26.0dBm  
Test Date -- 06/04/2001



SAR<sub>Tot</sub> [mW/g]



# SANYO FCC ID:AEZSCP-47H -- PCS CDMA Head SAR

Generic Twin Phantom; Left Hand Section; Probe: ET3DV6 - SN1560 -- Probe Cal Date 20/02/01

Med. Parameters 1900 MHz Brain:  $\sigma = 1.82$  mho/m  $\epsilon_r = 40.4$   $\rho = 1.00$  g/cm<sup>3</sup>; Antenna Position -- In; Crest Factor 1.0

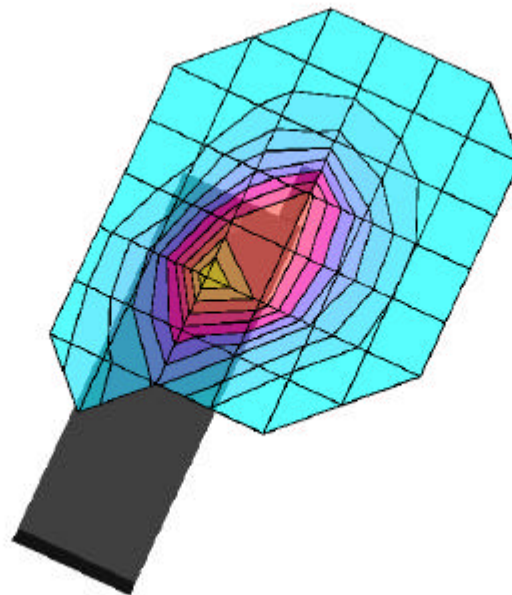
**SAR (1g): 1.39 mW/g**, SAR (10g): 0.805 mW/g

SANYO DualBand Model:SCP-4700

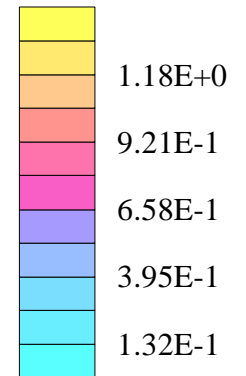
PCS CDMA Mode, Ch.0025 [1851.25MHz]

Conducted Power = 23.5dBm

Test Date -- 06/05/2001



SAR<sub>Tot</sub> [mW/g]



# SANYO FCC ID:AEZSCP-47H -- PCS CDMA Head SAR

Generic Twin Phantom; Left Hand Section; Probe: ET3DV6 - SN1560 -- Probe Cal Date 20/02/01

Med. Parameters 1900 MHz Brain:  $\sigma = 1.82$  mho/m  $\epsilon_r = 40.4$   $\rho = 1.00$  g/cm<sup>3</sup>; Antenna Position -- Out; Crest Factor 1.0

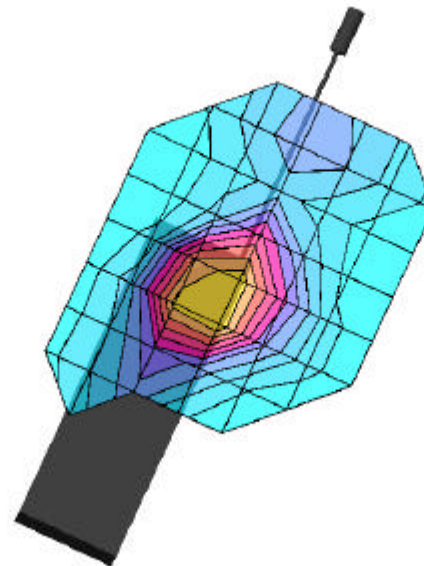
**SAR (1g): 0.446 mW/g, SAR (10g): 0.268 mW/g**

SANYO DualBand Model:SCP-4700

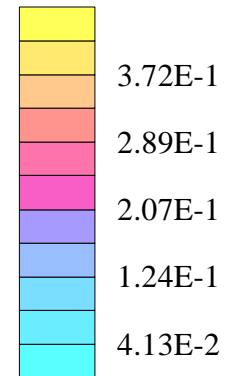
PCS CDMA Mode, Ch.0025 [1851.25MHz]

Conducted Power = 23.5dBm

Test Date -- 06/05/2001



SAR<sub>Tot</sub> [mW/g]





# SANYO FCC ID:AEZSCP-47H -- PCS CDMA Head SAR

Generic Twin Phantom; Left Hand Section; Probe: ET3DV6 - SN1560 -- Probe Cal Date 20/02/01

Med. Parameters 1900 MHz Brain:  $\sigma = 1.82$  mho/m  $\epsilon_r = 40.4$   $\rho = 1.00$  g/cm<sup>3</sup>; Antenna Position -- In; Crest Factor 1.0

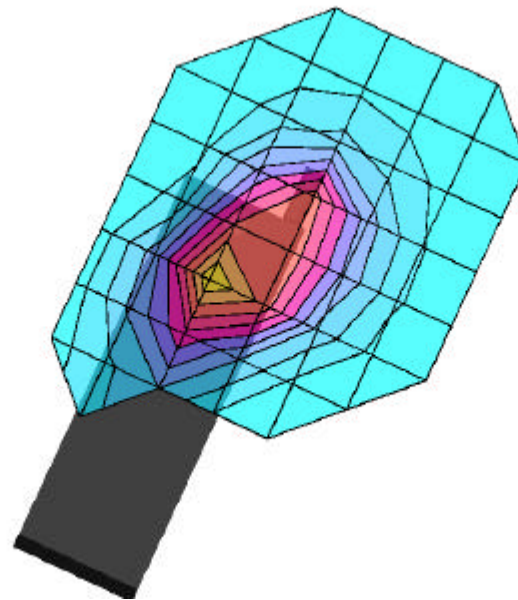
**SAR (1g): 1.27 mW/g, SAR (10g): 0.739 mW/g**

SANYO DualBand Model:SCP-4700

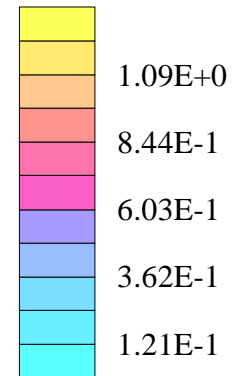
PCS CDMA Mode, Ch.0600 [1880.00MHz]

Conducted Power = 23.5dBm

Test Date -- 06/05/2001



SAR<sub>Tot</sub> [mW/g]



# SANYO FCC ID:AEZSCP-47H -- PCS CDMA Head SAR

Generic Twin Phantom; Left Hand Section; Probe: ET3DV6 - SN1560 -- Probe Cal Date 20/02/01

Med. Parameters 1900 MHz Brain:  $\sigma = 1.82$  mho/m  $\epsilon_r = 40.4$   $\rho = 1.00$  g/cm<sup>3</sup>; Antenna Position -- Out; Crest Factor 1.0

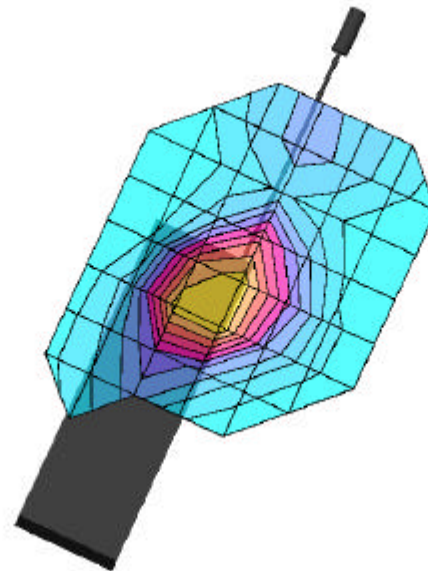
**SAR (1g): 0.492 mW/g, SAR (10g): 0.288 mW/g**

SANYO DualBand Model:SCP-4700

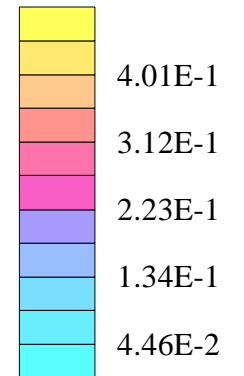
PCS CDMA Mode, Ch.0600 [1880.00MHz]

Conducted Power = 23.5dBm

Test Date -- 06/05/2001



SAR<sub>Tot</sub> [mW/g]



# SANYO FCC ID:AEZSCP-47H -- PCS CDMA Head SAR

Generic Twin Phantom; Left Hand Section; Probe: ET3DV6 - SN1560 -- Probe Cal Date 20/02/01

Med. Parameters 1900 MHz Brain:  $\sigma = 1.82$  mho/m  $\epsilon_r = 40.4$   $\rho = 1.00$  g/cm<sup>3</sup>; Antenna Position -- In; Crest Factor 1.0

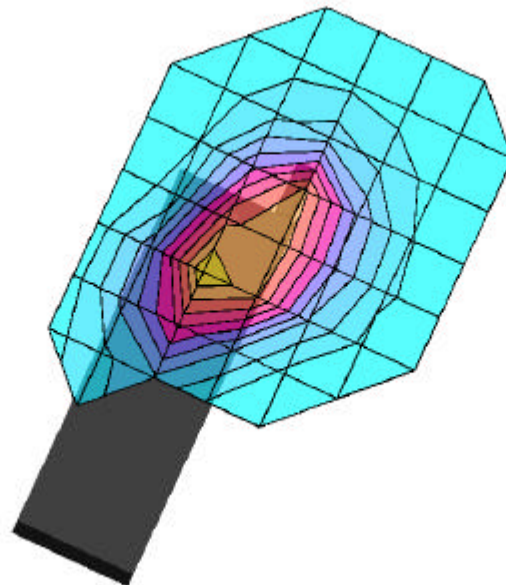
**SAR (1g): 1.07 mW/g, SAR (10g): 0.630 mW/g**

SANYO DualBand Model:SCP-4700

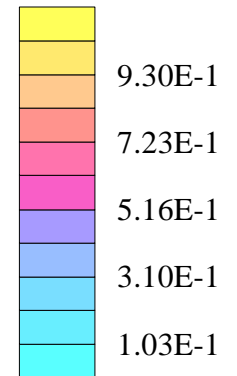
PCS CDMA Mode, Ch.1175 [1908.75MHz]

Conducted Power = 23.5dBm

Test Date -- 06/05/2001



SAR<sub>Tot</sub> [mW/g]



# SANYO FCC ID:AEZSCP-47H -- PCS CDMA Head SAR

Generic Twin Phantom; Left Hand Section; Probe: ET3DV6 - SN1560 -- Probe Cal Date 20/02/01

Med. Parameters 1900 MHz Brain:  $\sigma = 1.82$  mho/m  $\epsilon_r = 40.4$   $\rho = 1.00$  g/cm<sup>3</sup>; Antenna Position -- Out; Crest Factor 1.0

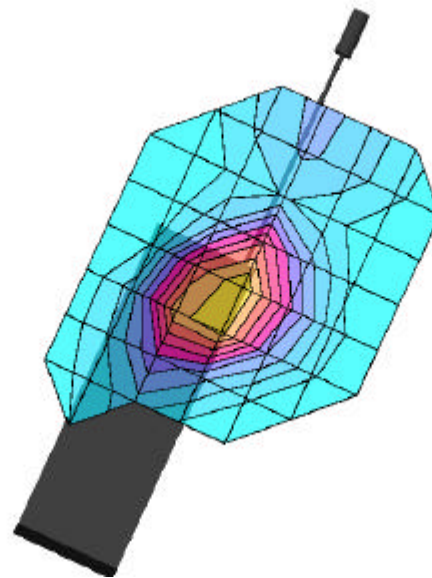
**SAR (1g): 0.535 mW/g, SAR (10g): 0.321 mW/g**

SANYO DualBand Model:SCP-4700

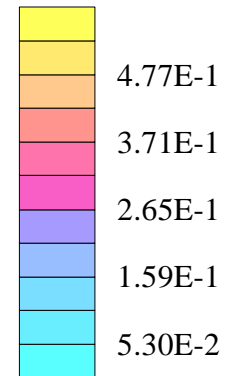
PCS CDMA Mode, Ch.1175 [1908.75MHz]

Conducted Power = 23.5dBm

Test Date -- 06/05/2001



SAR<sub>Tot</sub> [mW/g]



# SANYO FCC ID:AEZSCP-47H -- FM Body/Mouth SAR

Generic Twin Phantom; Flat Section; Probe: ET3DV6 - SN1560 -- Probe Cal Date 20/02/01

Med. Parameters 835 MHz Muscle:  $\sigma = 0.95$  mho/m  $\epsilon_r = 56.2$   $\rho = 1.00$  g/cm<sup>3</sup>; Antenna Position -- In; Crest Factor 1.0

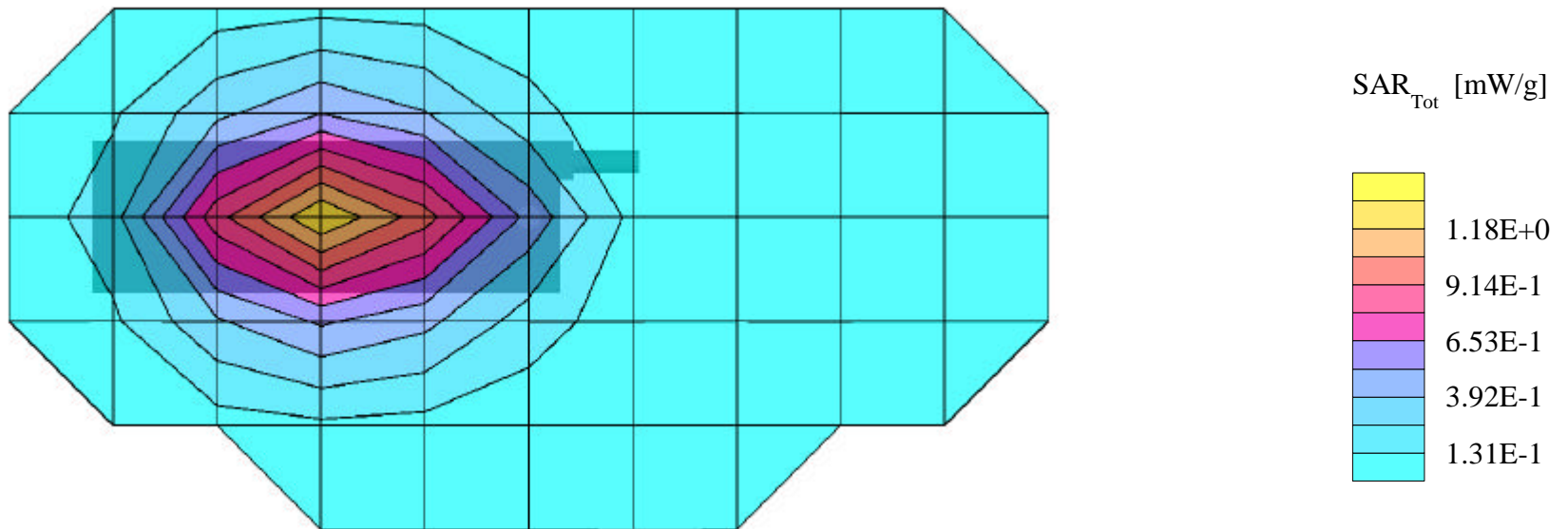
**SAR (1g): 1.27 mW/g, SAR (10g): 0.901 mW/g**

SANYO DualBand Model:SCP-4700

FM Mode, Ch.0991 [824.70MHz]; No Beltclip, No Holster

Conducted Power = 26.0dBm; Spacing = 1.5cm from flat phantom to rear speaker & 1.3cm from retracted & extended antenna

Test Date -- 06/05/2001



# SANYO FCC ID:AEZSCP-47H -- FM Body/Mouth SAR

Generic Twin Phantom; Flat Section; Probe: ET3DV6 - SN1560 -- Probe Cal Date 20/02/01

Med. Parameters 835 MHz Muscle:  $\sigma = 0.95$  mho/m  $\epsilon_r = 56.2$   $\rho = 1.00$  g/cm<sup>3</sup>; Antenna Position -- Out; Crest Factor 1.0

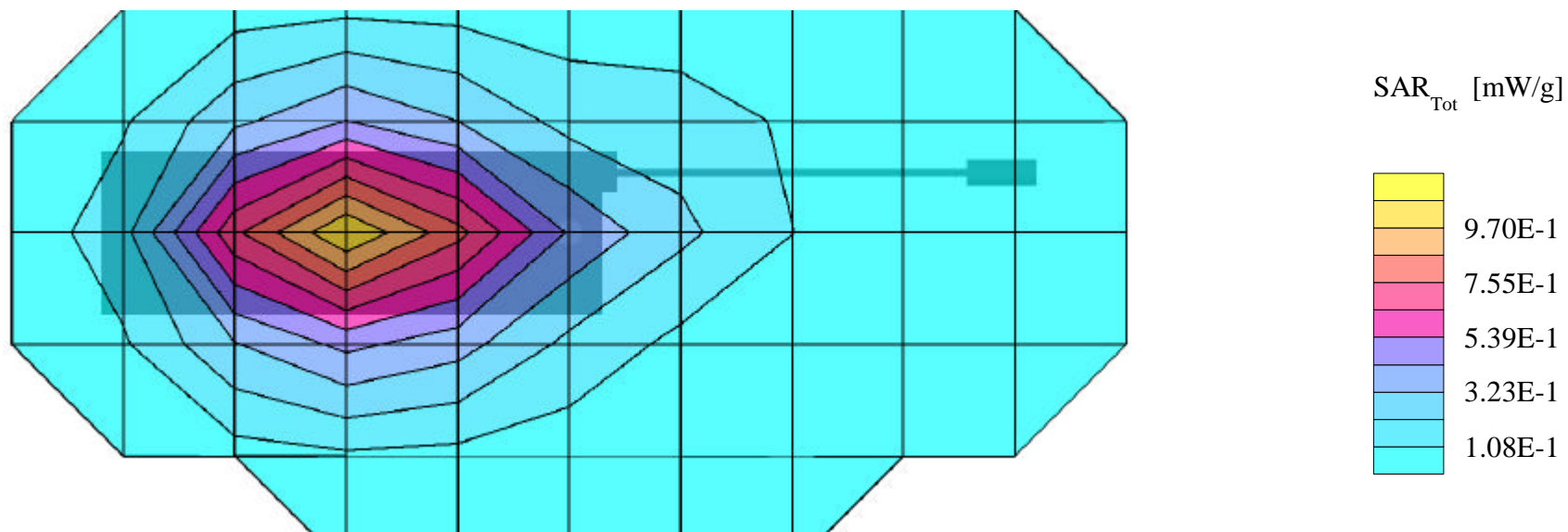
**SAR (1g): 1.07 mW/g, SAR (10g): 0.754 mW/g**

SANYO DualBand Model:SCP-4700

FM Mode, Ch.0991 [824.04MHz]; No Beltclip, No Holster

Conducted Power = 26.0dBm; Spacing = 1.5cm from flat phantom to rear speaker & 1.3cm from retracted & extended antenna

Test Date -- 06/05/2001



# SANYO FCC ID:AEZSCP-47H -- FM Body/Mouth SAR

Generic Twin Phantom; Flat Section; Probe: ET3DV6 - SN1560 -- Probe Cal Date 20/02/01

Med. Parameters 835 MHz Muscle:  $\sigma = 0.95$  mho/m  $\epsilon_r = 56.2$   $\rho = 1.00$  g/cm<sup>3</sup>; Antenna Position -- In; Crest Factor 1.0

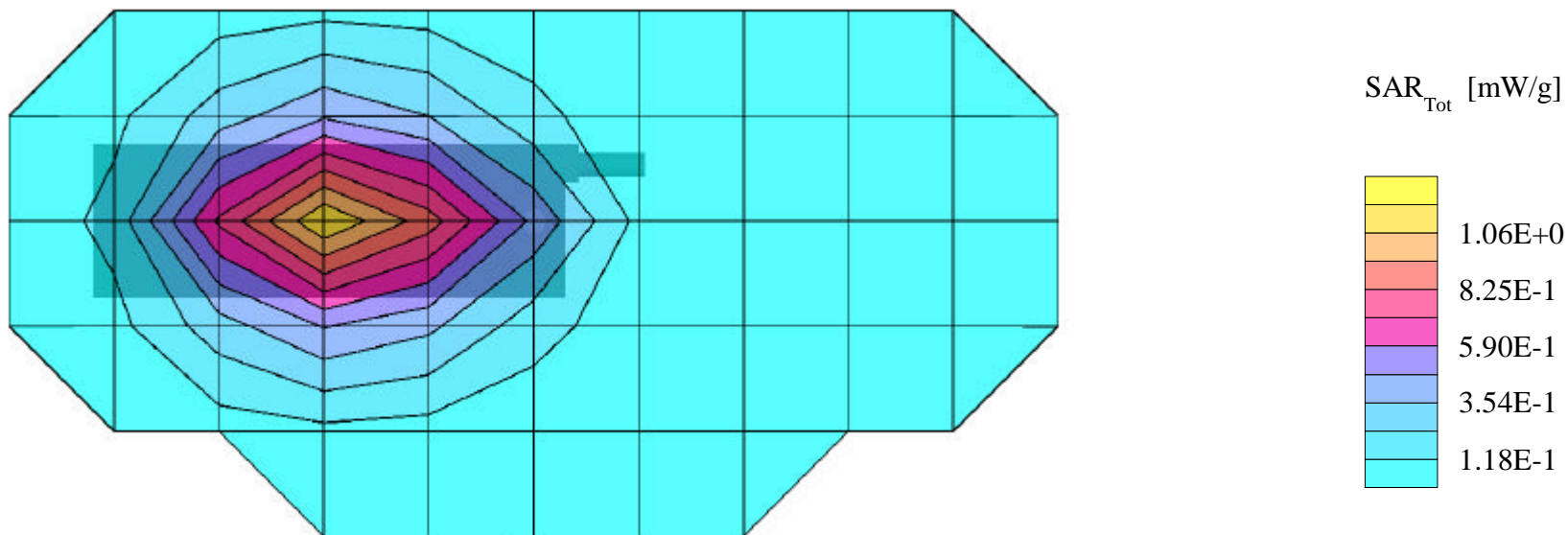
**SAR (1g): 1.14 mW/g, SAR (10g): 0.806 mW/g**

SANYO DualBand Model:SCP-4700

FM Mode, Ch.0383 [836.49MHz]; No Beltclip, No Holster

Conducted Power = 26.0dBm; Spacing = 1.5cm from flat phantom to rear speaker & 1.3cm from retracted & extended antenna

Test Date -- 06/05/2001



# SANYO FCC ID:AEZSCP-47H -- FM Body/Mouth SAR

Generic Twin Phantom; Flat Section; Probe: ET3DV6 - SN1560 -- Probe Cal Date 20/02/01

Med. Parameters 835 MHz Muscle:  $\sigma = 0.95$  mho/m  $\epsilon_r = 56.2$   $\rho = 1.00$  g/cm<sup>3</sup>; Antenna Position -- Out; Crest Factor 1.0

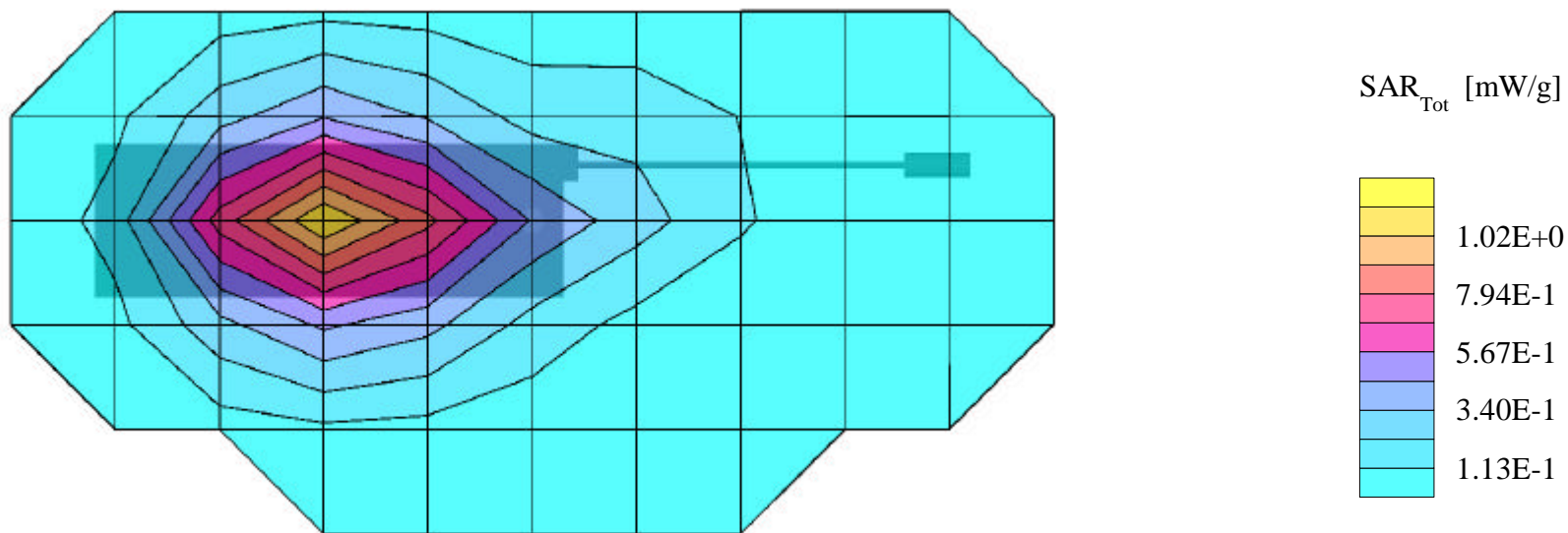
**SAR (1g): 1.10 mW/g, SAR (10g): 0.778 mW/g**

SANYO DualBand Model:SCP-4700

FM Mode, Ch.0383 [836.49MHz]; No Beltclip, No Holster

Conducted Power = 26.0dBm; Spacing = 1.5cm from flat phantom to rear speaker & 1.3cm from retracted & extended antenna

Test Date -- 06/05/2001





# SANYO FCC ID:AEZSCP-47H -- FM Body/Mouth SAR

Generic Twin Phantom; Flat Section; Probe: ET3DV6 - SN1560 -- Probe Cal Date 20/02/01

Med. Parameters 835 MHz Muscle:  $\sigma = 0.95$  mho/m  $\epsilon_r = 56.2$   $\rho = 1.00$  g/cm<sup>3</sup>; Antenna Position -- In; Crest Factor 1.0

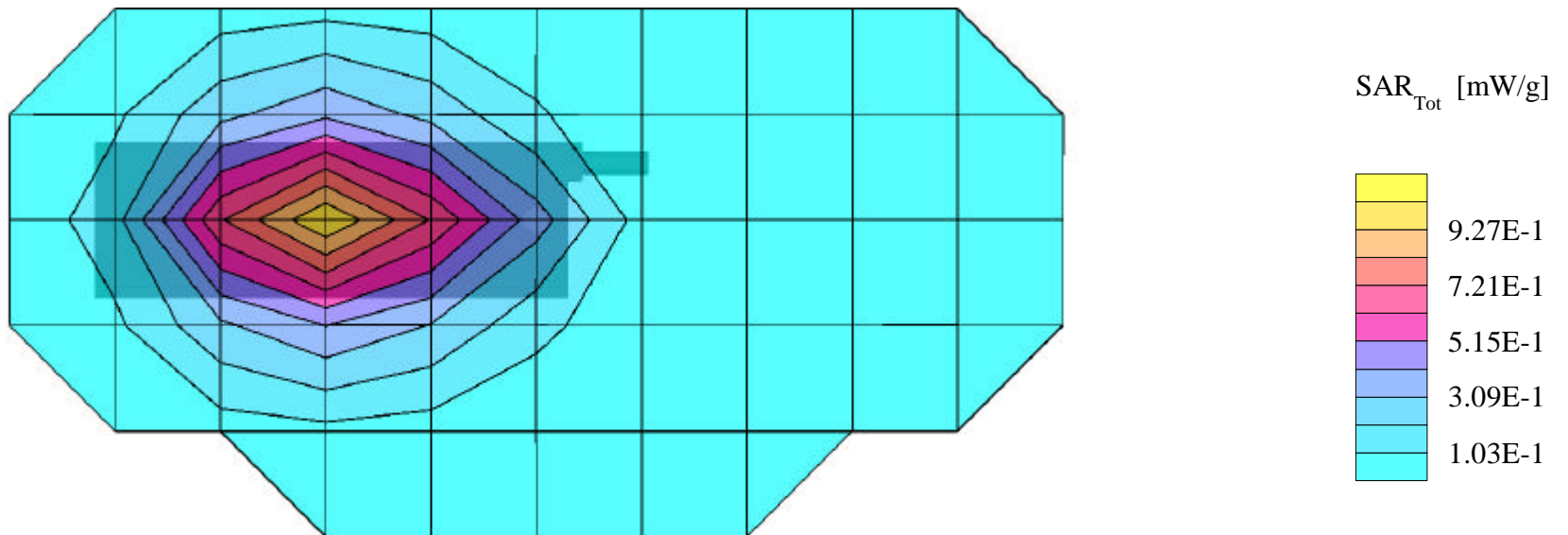
**SAR (1g): 0.998 mW/g, SAR (10g): 0.704 mW/g**

SANYO DualBand Model:SCP-4700

FM Mode, Ch.0799 [848.97MHz]; No Beltclip, No Holster

Conducted Power = 26.0dBm; Spacing = 1.5cm from flat phantom to rear speaker & 1.3cm from retracted & extended antenna

Test Date -- 06/05/2001



# SANYO FCC ID:AEZSCP-47H -- FM Body/Mouth SAR

Generic Twin Phantom; Flat Section; Probe: ET3DV6 - SN1560 -- Probe Cal Date 20/02/01

Med. Parameters 835 MHz Muscle:  $\sigma = 0.95$  mho/m  $\epsilon_r = 56.2$   $\rho = 1.00$  g/cm<sup>3</sup>; Antenna Position -- Out; Crest Factor 1.0

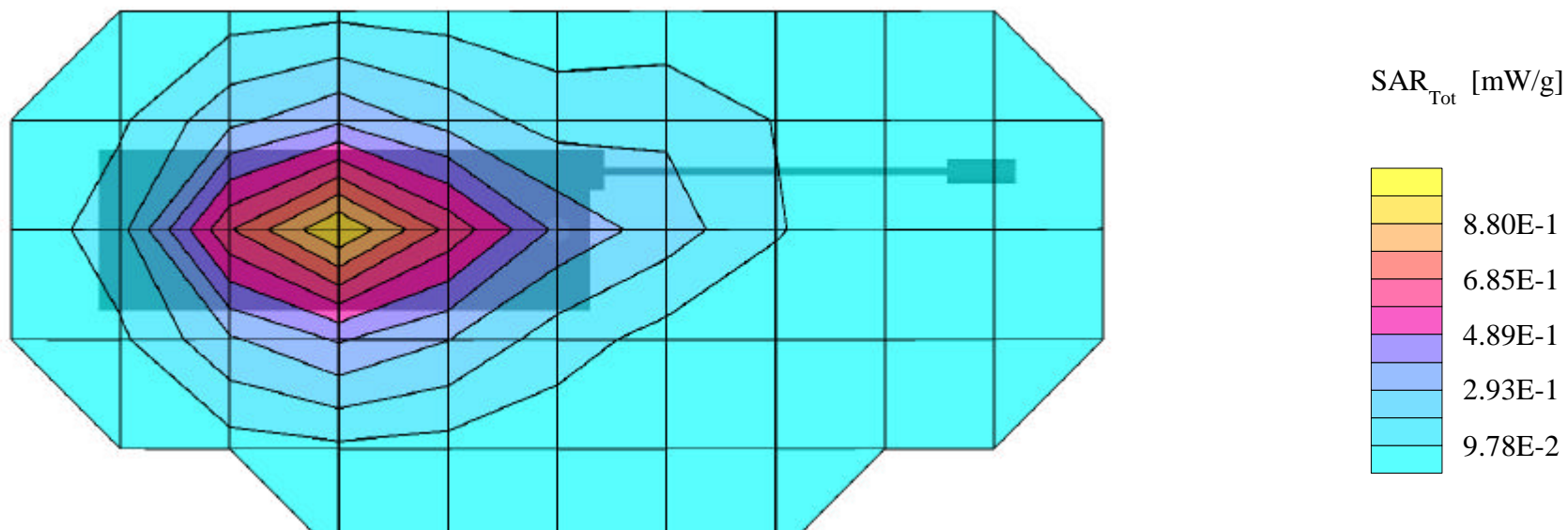
**SAR (1g): 0.958 mW/g, SAR (10g): 0.674 mW/g**

SANYO DualBand Model:SCP-4700

FM Mode, Ch.0799 [848.97MHz]; No Beltclip, No Holster

Conducted Power = 26.0dBm; Spacing = 1.5cm from flat phantom to rear speaker & 1.3cm from retracted & extended antenna

Test Date -- 06/05/2001



# SANYO FCC ID:AEZSCP-47H -- PCS CDMA Body/Mouth SAR

Generic Twin Phantom; Flat Section; Probe: ET3DV6 - SN1560 -- Probe Cal Date 20/02/01

Med. Parameters 1900 MHz Muscle:  $\sigma = 1.85$  mho/m  $\epsilon_r = 54.2$   $\rho = 1.00$  g/cm<sup>3</sup>; Antenna Position -- In; Crest Factor 1.0

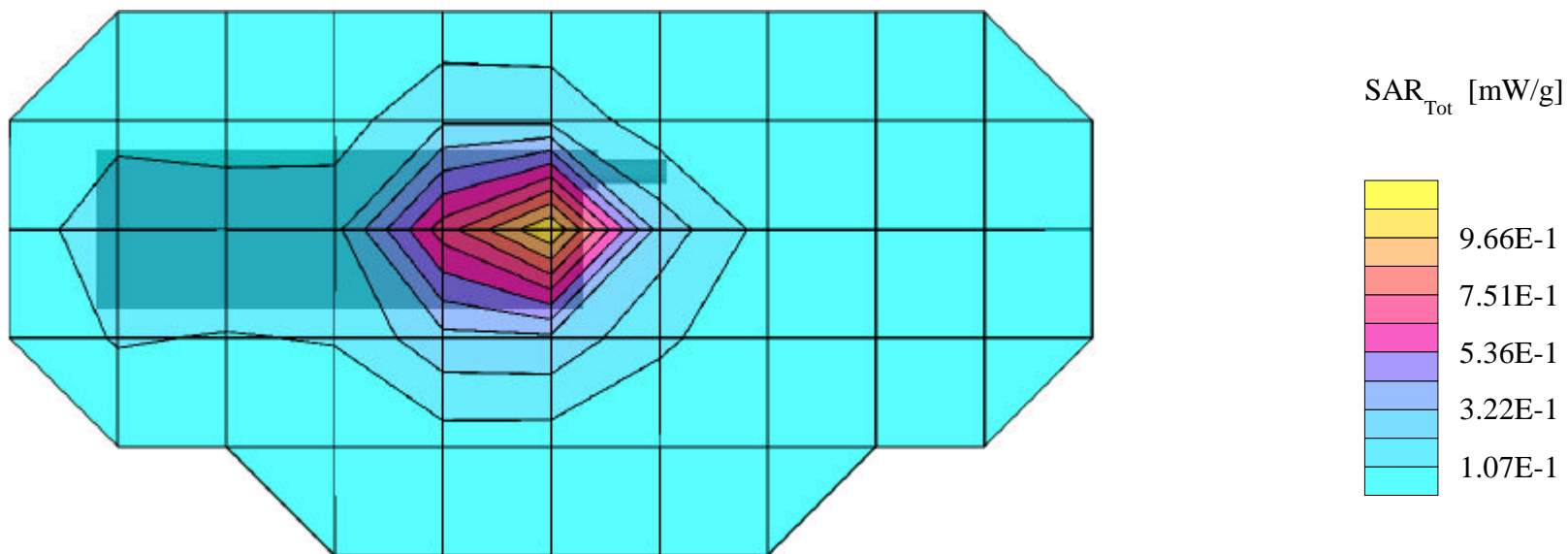
**SAR (1g): 1.08 mW/g, SAR (10g): 0.611 mW/g**

SANYO DualBand Model:SCP-4700

PCS CDMA Mode, Ch.0025 [1851.25MHz]; No Beltclip, No Holster

Conducted Power = 23.5dBm; Spacing = 1.5cm from flat phantom to rear speaker & 1.3cm from retracted & extended antenna

Test Date -- 06/05/2001



# SANYO FCC ID:AEZSCP-47H -- PCS CDMA Body/Mouth SAR

Generic Twin Phantom; Flat Section; Probe: ET3DV6 - SN1560 -- Probe Cal Date 20/02/01

Med. Parameters 1900 MHz Muscle:  $\sigma = 1.85$  mho/m  $\epsilon_r = 54.2$   $\rho = 1.00$  g/cm<sup>3</sup>; Antenna Position -- Out; Crest Factor 1.0

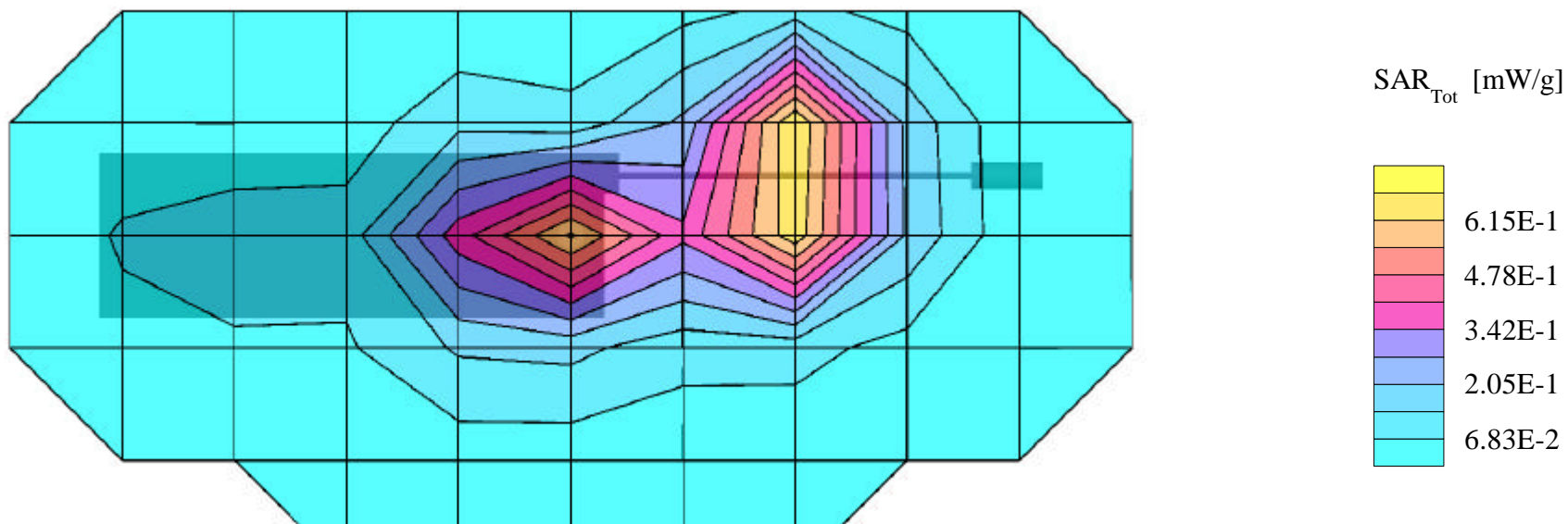
**SAR (1g): 1.15 mW/g, SAR (10g): 0.639 mW/g**

SANYO DualBand Model:SCP-4700

PCS CDMA Mode, Ch.0025 [1851.25MHz]; No Beltclip, No Holster

Conducted Power = 23.5dBm; Spacing = 1.5cm from flat phantom to rear speaker & 1.3cm from retracted & extended antenna

Test Date -- 06/05/2001



# SANYO FCC ID:AEZSCP-47H -- PCS CDMA Body/Mouth SAR

Generic Twin Phantom; Flat Section; Probe: ET3DV6 - SN1560 -- Probe Cal Date 20/02/01

Med. Parameters 1900 MHz Muscle:  $\sigma = 1.85$  mho/m  $\epsilon_r = 54.2$   $\rho = 1.00$  g/cm<sup>3</sup>; Antenna Position -- In; Crest Factor 1.0

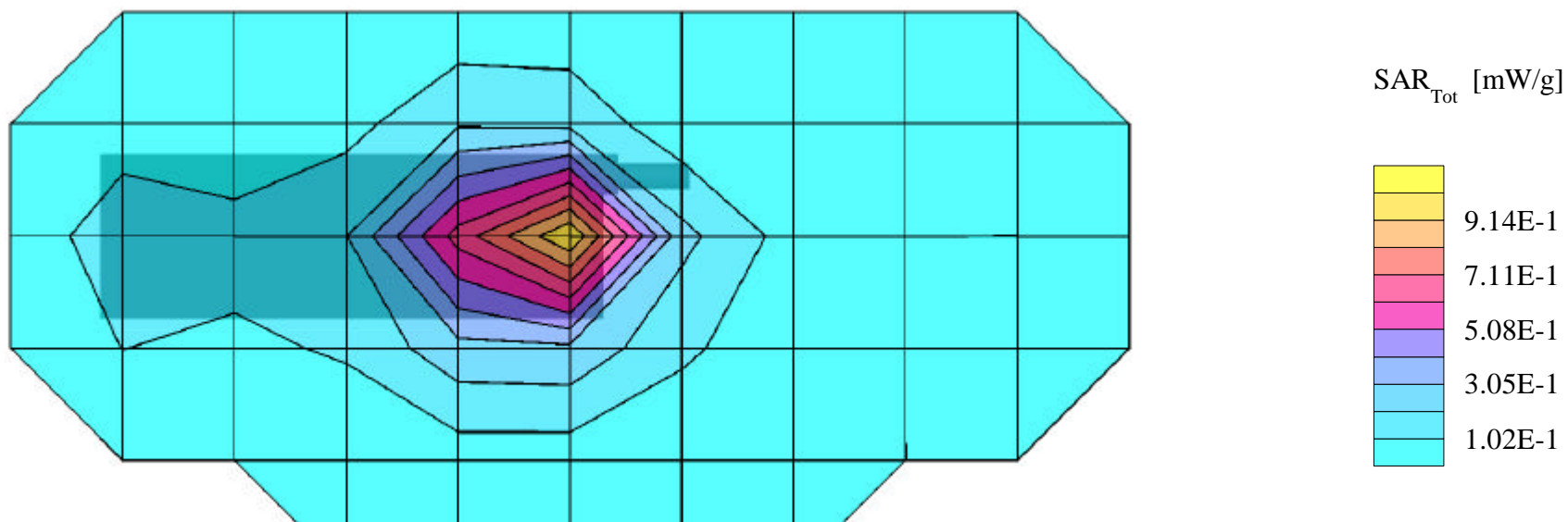
**SAR (1g): 0.998 mW/g, SAR (10g): 0.567 mW/g**

SANYO DualBand Model:SCP-4700

PCS CDMA Mode, Ch.0600 [1880.00MHz]; No Beltclip, No Holster

Conducted Power = 23.5dBm; Spacing = 1.5cm from flat phantom to rear speaker & 1.3cm from retracted & extended antenna

Test Date -- 06/05/2001



# SANYO FCC ID:AEZSCP-47H -- PCS CDMA Body/Mouth SAR

Generic Twin Phantom; Flat Section; Probe: ET3DV6 - SN1560 -- Probe Cal Date 20/02/01

Med. Parameters 1900 MHz Muscle:  $\sigma = 1.85$  mho/m  $\epsilon_r = 54.2$   $\rho = 1.00$  g/cm<sup>3</sup>; Antenna Position -- Out; Crest Factor 1.0

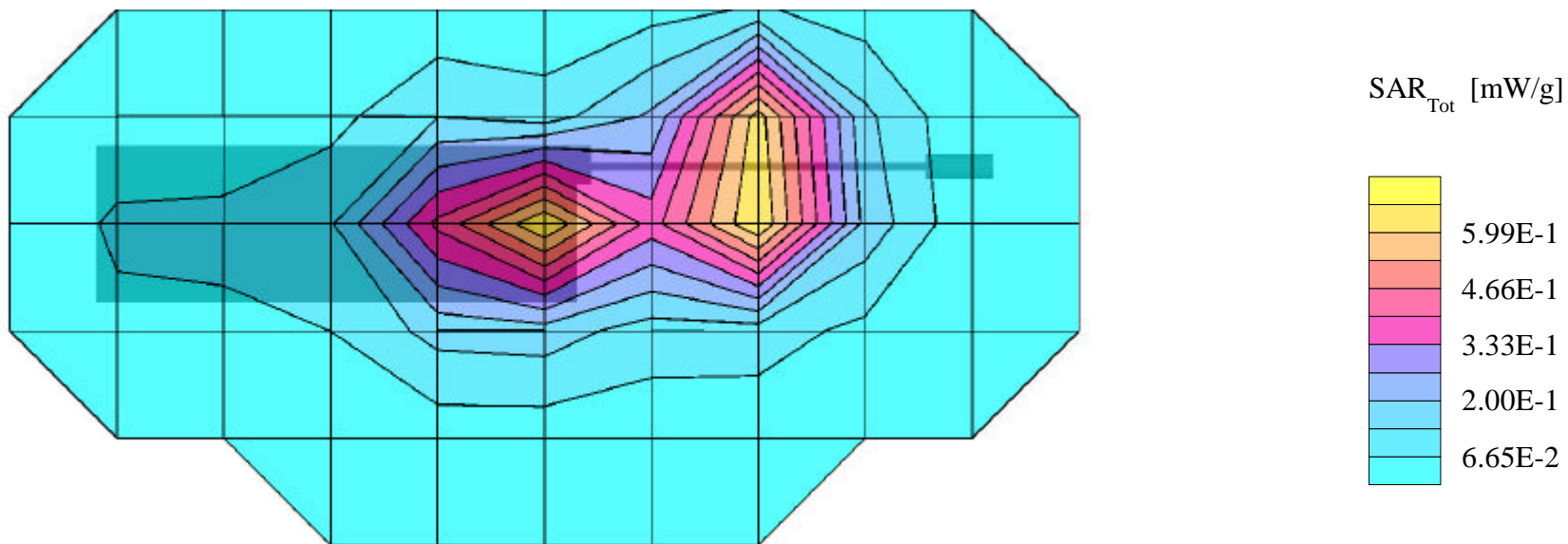
**SAR (1g): 1.13 mW/g, SAR (10g): 0.624 mW/g**

SANYO DualBand Model:SCP-4700

PCS CDMA Mode, Ch.0600 [1880.00MHz]; No Beltclip, No Holster

Conducted Power = 23.5dBm; Spacing = 1.5cm from flat phantom to rear speaker & 1.3cm from retracted & extended antenna

Test Date -- 06/05/2001



# SANYO FCC ID:AEZSCP-47H -- PCS CDMA Body/Mouth SAR

Generic Twin Phantom; Flat Section; Probe: ET3DV6 - SN1560 -- Probe Cal Date 20/02/01

Med. Parameters 1900 MHz Muscle:  $\sigma = 1.85$  mho/m  $\epsilon_r = 54.2$   $\rho = 1.00$  g/cm<sup>3</sup>; Antenna Position -- In; Crest Factor 1.0

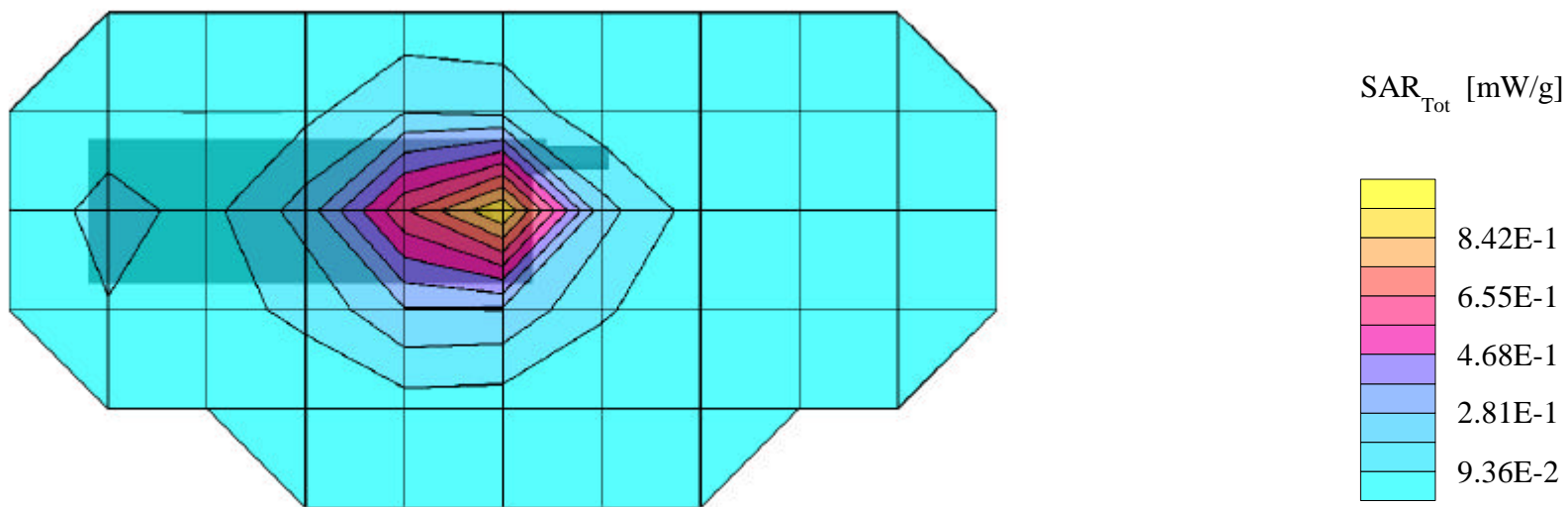
**SAR (1g): 0.939 mW/g, SAR (10g): 0.531 mW/g**

SANYO DualBand Model:SCP-4700

PCS CDMA Mode, Ch.1175 [1908.75MHz]; No Beltclip, No Holster

Conducted Power = 23.5dBm; Spacing = 1.5cm from flat phantom to rear speaker & 1.3cm from retracted & extended antenna

Test Date -- 06/05/2001



# SANYO FCC ID:AEZSCP-47H -- PCS CDMA Body/Mouth SAR

Generic Twin Phantom; Flat Section; Probe: ET3DV6 - SN1560 -- Probe Cal Date 20/02/01

Med. Parameters 1900 MHz Muscle:  $\sigma = 1.85$  mho/m  $\epsilon_r = 54.2$   $\rho = 1.00$  g/cm<sup>3</sup>; Antenna Position -- Out; Crest Factor 1.0

**SAR (1g): 1.13 mW/g, SAR (10g): 0.596 mW/g**

SANYO DualBand Model:SCP-4700

PCS CDMA Mode, Ch.1175 [1908.75MHz]; No Beltclip, No Holster

Conducted Power = 23.5dBm; Spacing = 1.5cm from flat phantom to rear speaker & 1.3cm from retracted & extended antenna

Test Date -- 06/05/2001

