

SANYO FCC ID: AEZSCP-45H -- PCS Body SAR

Generic Twin Phantom; Flat Section; Probe: ET3DV5 - SN1370 -- Probe Cal Date 02/00

Med. Parameters 1900 MHz Muscle: $\sigma = 1.85$ mho/m $\epsilon_r = 54.2$ $\rho = 1.00$ g/cm³; Antenna Position -- Out; Crest Factor 1.0

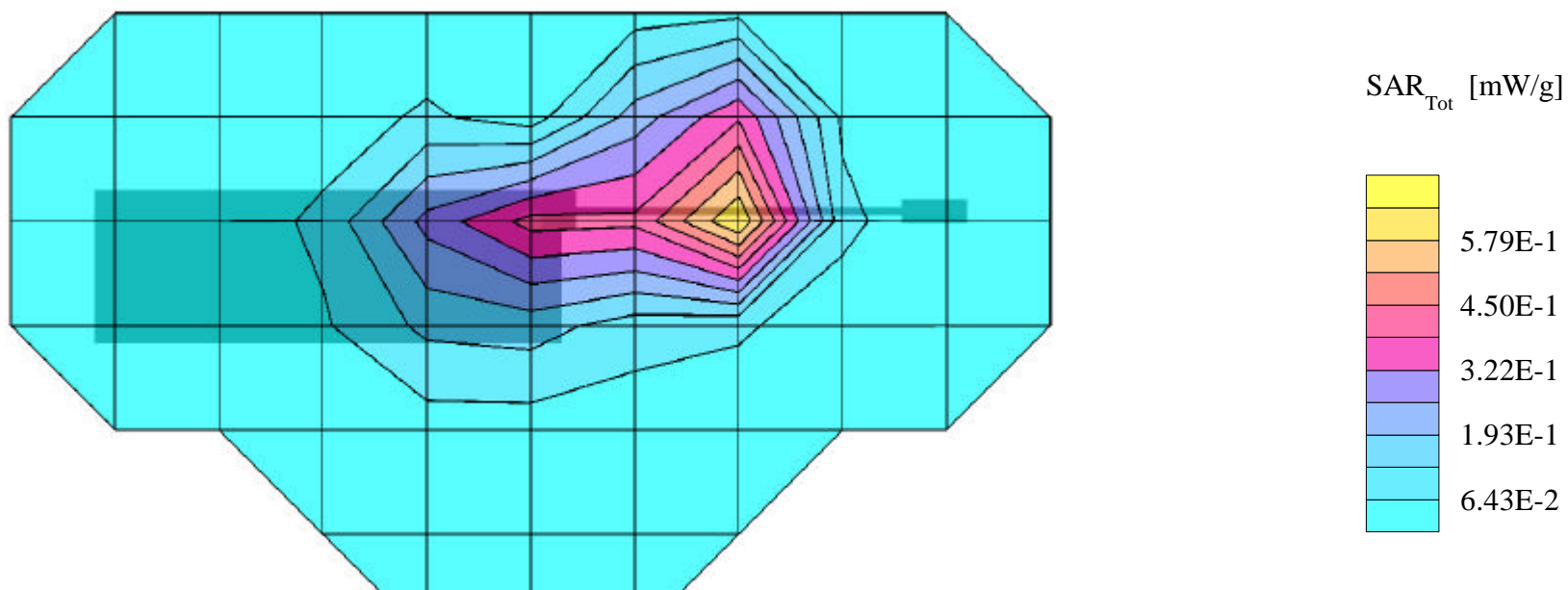
SAR (1g): 0.958 mW/g, SAR (10g): 0.526 mW/g

SANYO Dual-band Model: SCP-4500

PCS Mode, Ch.0025 [1851.25MHz]

Conducted Power = 21.9dBm; Spacing = 1.5cm from flat phantom to phone

Test Date -- 03-21-2000



SANYO FCC ID: AEZSCP-45H -- PCS Body SAR

Generic Twin Phantom; Flat Section; Probe: ET3DV5 - SN1370 -- Probe Cal Date 02/00

Med. Parameters 1900 MHz Muscle: $\sigma = 1.85$ mho/m $\epsilon_r = 54.2$ $\rho = 1.00$ g/cm³; Antenna Position -- Out; Crest Factor 1.0

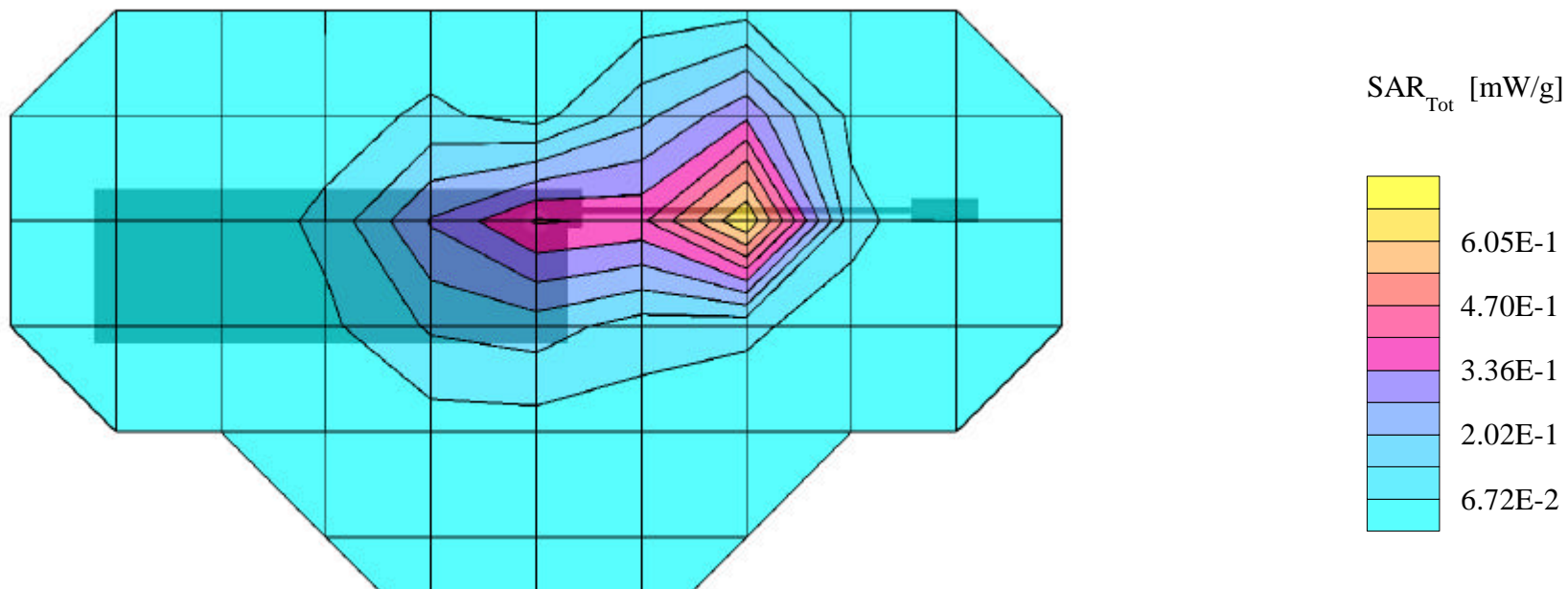
SAR (1g): 0.943 mW/g, SAR (10g): 0.505 mW/g

SANYO Dual-band Model: SCP-4500

PCS Mode, Ch.0600 [1880.00MHz]

Conducted Power = 22.4dBm; Spacing = 1.5cm from flat phantom to phone

Test Date -- 03-21-2000



SANYO FCC ID: AEZSCP-45H -- PCS Body SAR

Generic Twin Phantom; Flat Section; Probe: ET3DV5 - SN1370 -- Probe Cal Date 02/00

Med. Parameters 1900 MHz Muscle: $\sigma = 1.85$ mho/m $\epsilon_r = 54.2$ $\rho = 1.00$ g/cm³; Antenna Position -- Out; Crest Factor 1.0

SAR (1g): 0.937 mW/g, SAR (10g): 0.501 mW/g

SANYO Dual-band Model: SCP-4500

PCS Mode, Ch.1175 [1908.75MHz]

Conducted Power = 22.2dBm; Spacing = 1.5cm from flat phantom to phone

Test Date -- 03-21-2000

