

SANYO FCC ID:AEZSCP-45H -- FM Body SAR

Generic Twin Phantom; Flat Section; Probe: ET3DV5 - SN1370 -- Probe Cal Date 02/00

Med. Parameters 835 MHz Muscle: $\sigma = 0.95$ mho/m $\epsilon_r = 56.2$ $\rho = 1.00$ g/cm³; Antenna Position -- In; Crest Factor 1.0

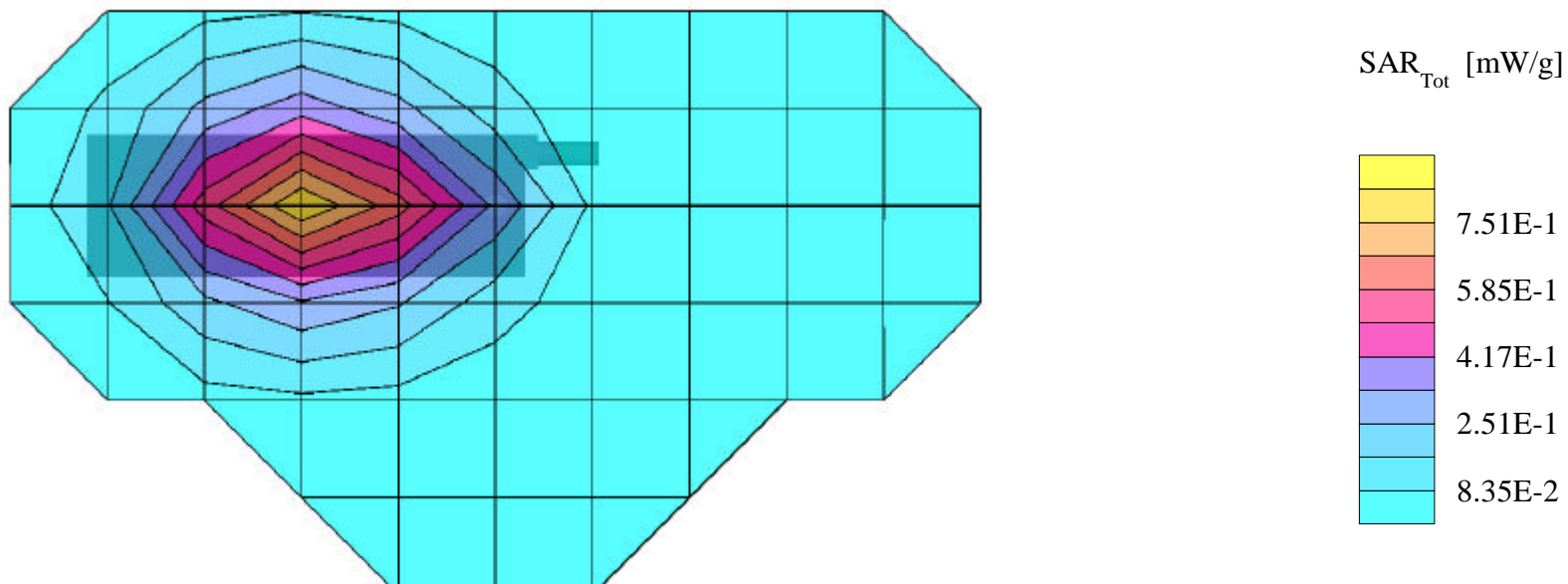
SAR (1g): 0.789 mW/g, SAR (10g): 0.542 mW/g

SANYO Dual-band Model: SCP-4500

FM Mode, Ch.0991 [824.04MHz]

Conducted Power = 25.4dBm; Spacing = 1.5cm from flat phantom to phone

Test Date -- 03-22-2000



SANYO FCC ID:AEZSCP-45H -- FM Body SAR

Generic Twin Phantom; Flat Section; Probe: ET3DV5 - SN1370 -- Probe Cal Date 02/00

Med. Parameters 835 MHz Muscle: $\sigma = 0.95$ mho/m $\epsilon_r = 56.2$ $\rho = 1.00$ g/cm³; Antenna Position -- Out; Crest Factor 1.0

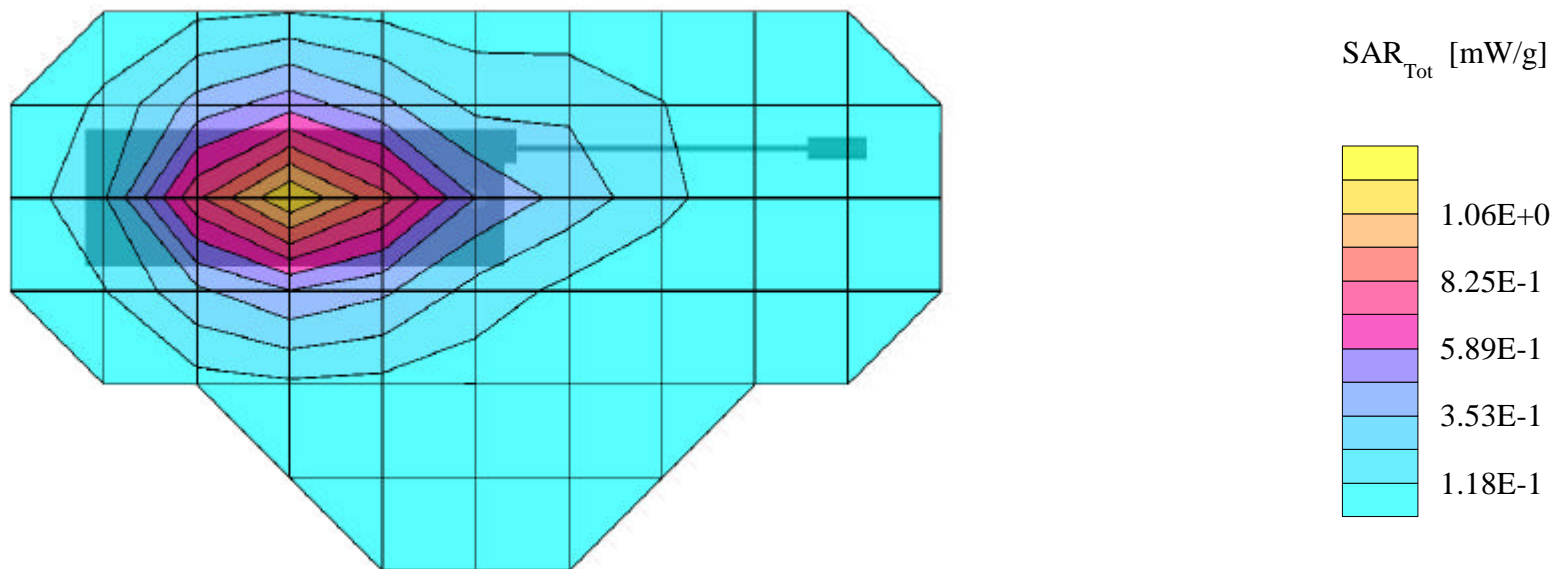
SAR (1g): 1.08 mW/g, SAR (10g): 0.745 mW/g

SANYO Dual-band Model: SCP-4500

FM Mode, Ch.0991 [824.04MHz]

Conducted Power = 25.4dBm; Spacing = 1.5cm from flat phantom to phone

Test Date -- 03-22-2000



SANYO FCC ID:AEZSCP-45H -- FM Body SAR

Generic Twin Phantom; Flat Section; Probe: ET3DV5 - SN1370 -- Probe Cal Date 02/00

Med. Parameters 835 MHz Muscle: $\sigma = 0.95$ mho/m $\epsilon_r = 56.2$ $\rho = 1.00$ g/cm³; Antenna Position -- In; Crest Factor 1.0

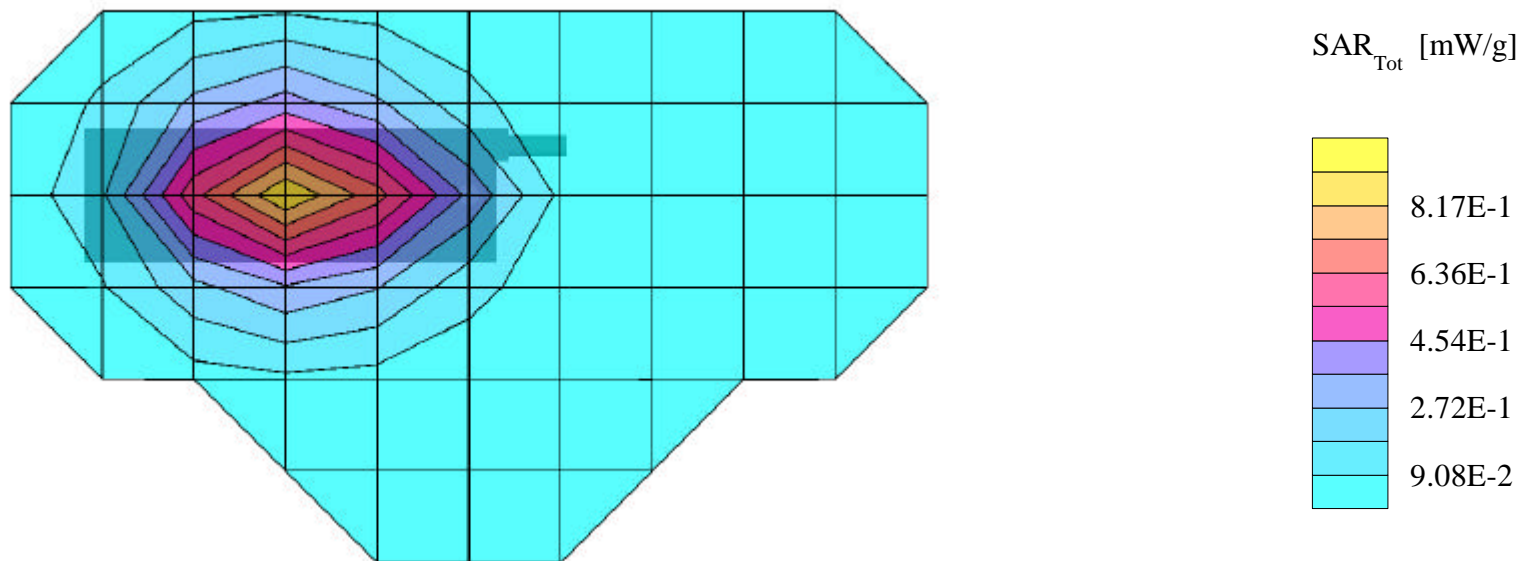
SAR (1g): 0.878 mW/g, SAR (10g): 0.604 mW/g

SANYO Dual-band Model: SCP-4500

FM Mode, Ch.0383 [836.49MHz]

Conducted Power = 25.1dBm; Spacing = 1.5cm from flat phantom to phone

Test Date -- 03-22-2000



SANYO FCC ID:AEZSCP-45H -- FM Body SAR

Generic Twin Phantom; Flat Section; Probe: ET3DV5 - SN1370 -- Probe Cal Date 02/00

Med. Parameters 835 MHz Muscle: $\sigma = 0.95$ mho/m $\epsilon_r = 56.2$ $\rho = 1.00$ g/cm³; Antenna Position -- Out; Crest Factor 1.0

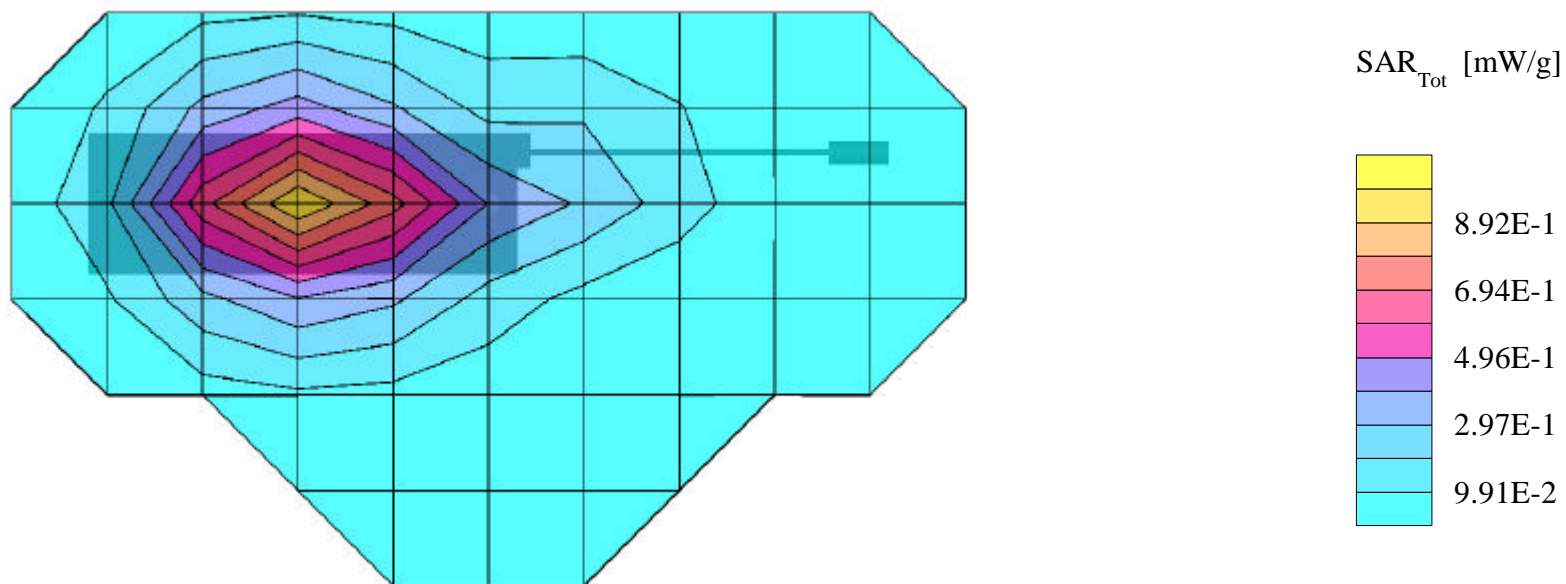
SAR (1g): 0.970 mW/g, SAR (10g): 0.666 mW/g

SANYO Dual-band Model: SCP-4500

FM Mode, Ch.0383 [836.49MHz]

Conducted Power = 25.1dBm; Spacing = 1.5cm from flat phantom to phone

Test Date -- 03-22-2000



SANYO FCC ID:AEZSCP-45H -- FM Body SAR

Generic Twin Phantom; Flat Section; Probe: ET3DV5 - SN1370 -- Probe Cal Date 02/00

Med. Parameters 835 MHz Muscle: $\sigma = 0.95$ mho/m $\epsilon_r = 56.2$ $\rho = 1.00$ g/cm³; Antenna Position -- In; Crest Factor 1.0

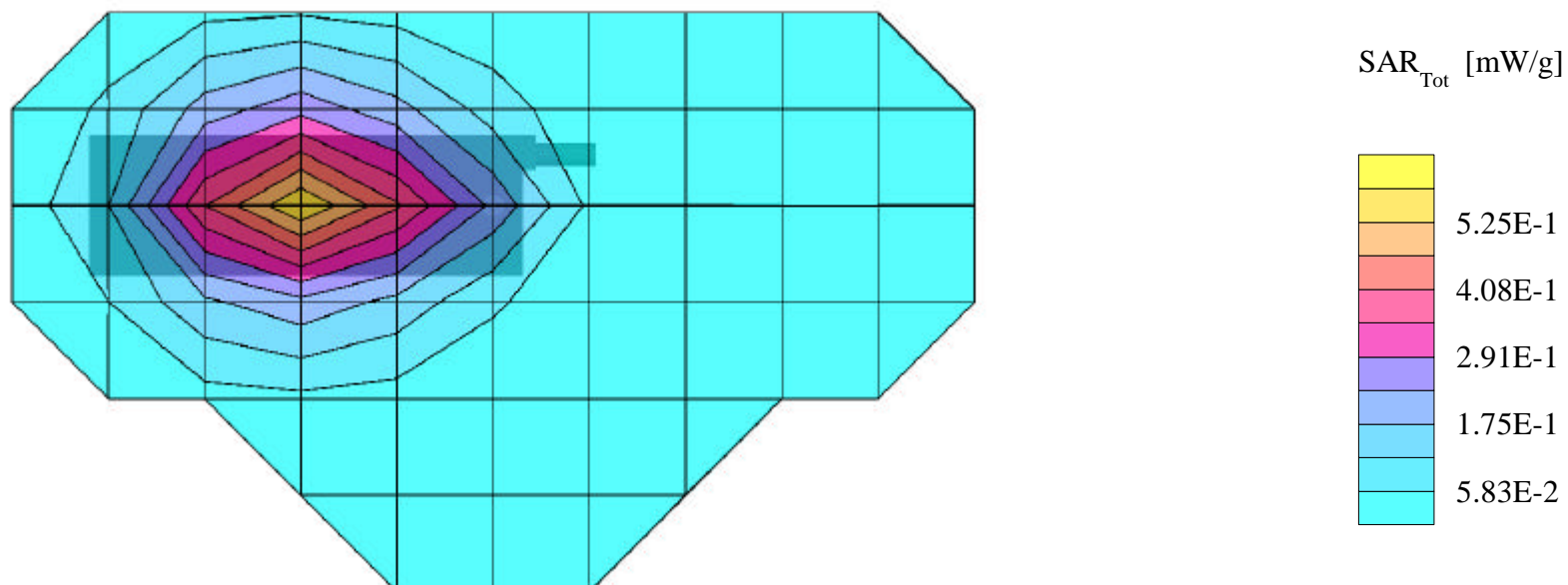
SAR (1g): 0.554 mW/g, SAR (10g): 0.377 mW/g

SANYO Dual-band Model: SCP-4500

FM Mode, Ch.0799 [848.97MHz]

Conducted Power = 25.3dBm; Spacing = 1.5cm from flat phantom to phone

Test Date -- 03-22-2000



SANYO FCC ID:AEZSCP-45H -- FM Body SAR

Generic Twin Phantom; Flat Section; Probe: ET3DV5 - SN1370 -- Probe Cal Date 02/00

Med. Parameters 835 MHz Muscle: $\sigma = 0.95$ mho/m $\epsilon_r = 56.2$ $\rho = 1.00$ g/cm³; Antenna Position -- Out; Crest Factor 1.0

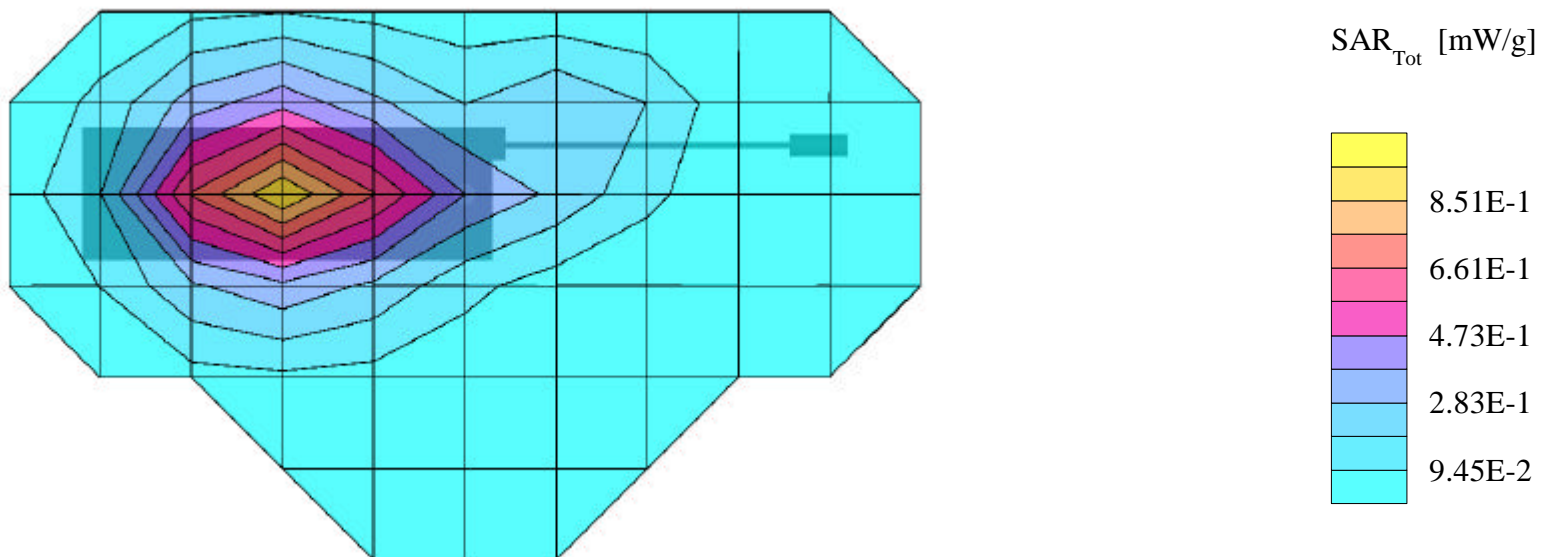
SAR (1g): 0.920 mW/g, SAR (10g): 0.625 mW/g

SANYO Dual-band Model: SCP-4500

FM Mode, Ch.0799 [848.97MHz]

Conducted Power = 25.3dBm; Spacing = 1.5cm from flat phantom to phone

Test Date -- 03-22-2000



SANYO FCC ID:AEZSCP-45H -- PCS Body SAR

Generic Twin Phantom; Flat Section; Probe: ET3DV5 - SN1370 -- Probe Cal Date 02/00

Med. Parameters 1900 MHz Muscle: $\sigma = 1.85$ mho/m $\epsilon_r = 54.2$ $\rho = 1.00$ g/cm³; Antenna Position -- In; Crest Factor 1.0

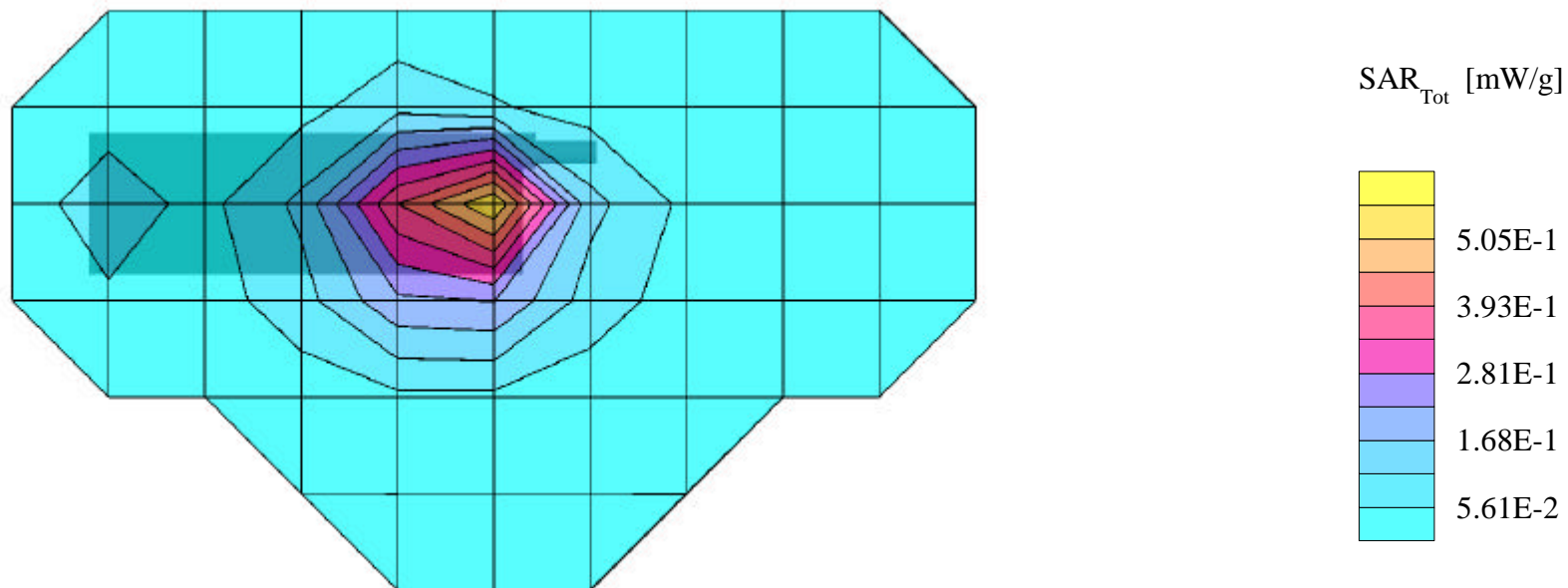
SAR (1g): 0.577 mW/g, SAR (10g): 0.331 mW/g

SANYO Dual-band Model: SCP-4500

PCS Mode, Ch.0025 [1851.25MHz]

Conducted Power = 21.9dBm; Spacing = 1.5cm from flat phantom to phone

Test Date -- 03-21-2000



SANYO FCC ID:AEZSCP-45H -- PCS Body SAR

Generic Twin Phantom; Flat Section; Probe: ET3DV5 - SN1370 -- Probe Cal Date 02/00

Med. Parameters 1900 MHz Muscle: $\sigma = 1.85$ mho/m $\epsilon_r = 54.2$ $\rho = 1.00$ g/cm³; Antenna Position -- Out; Crest Factor 1.0

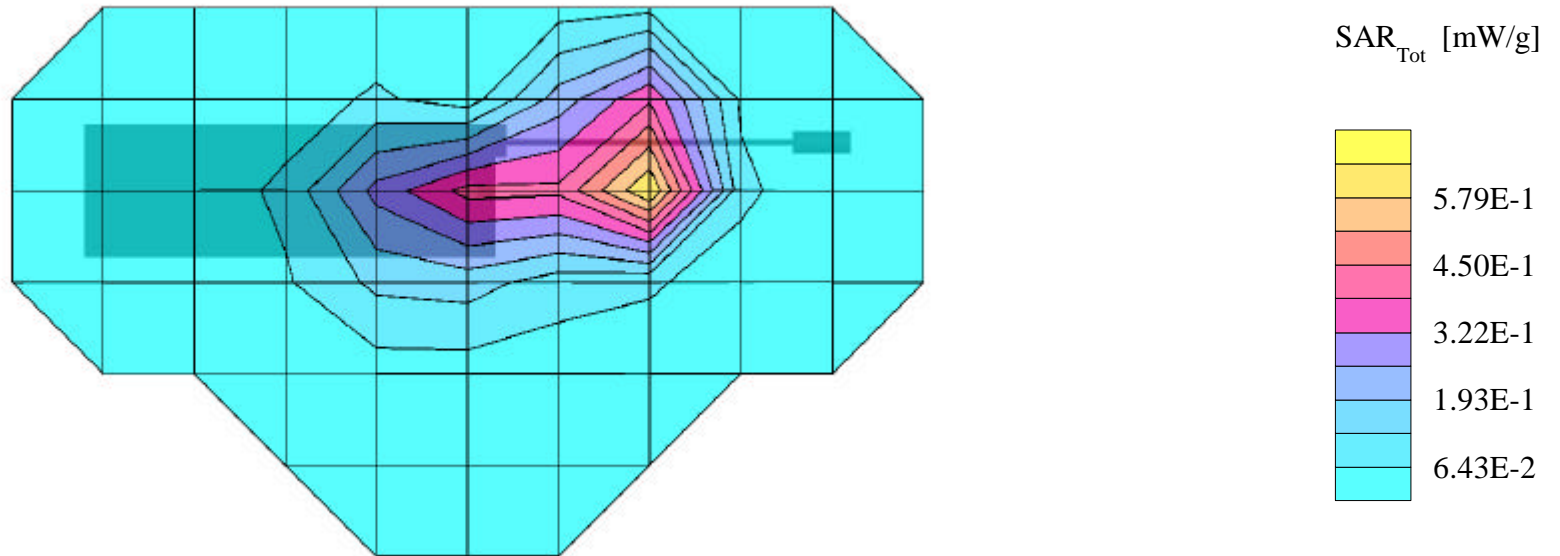
SAR (1g): 0.958 mW/g, SAR (10g): 0.526 mW/g

SANYO Dual-band Model: SCP-4500

PCS Mode, Ch.0025 [1851.25MHz]

Conducted Power = 21.9dBm; Spacing = 1.5cm from flat phantom to phone

Test Date -- 03-21-2000



SANYO FCC ID:AEZSCP-45H -- PCS Body SAR

Generic Twin Phantom; Flat Section; Probe: ET3DV5 - SN1370 -- Probe Cal Date 02/00

Med. Parameters 1900 MHz Muscle: $\sigma = 1.85$ mho/m $\epsilon_r = 54.2$ $\rho = 1.00$ g/cm³; Antenna Position -- In; Crest Factor 1.0

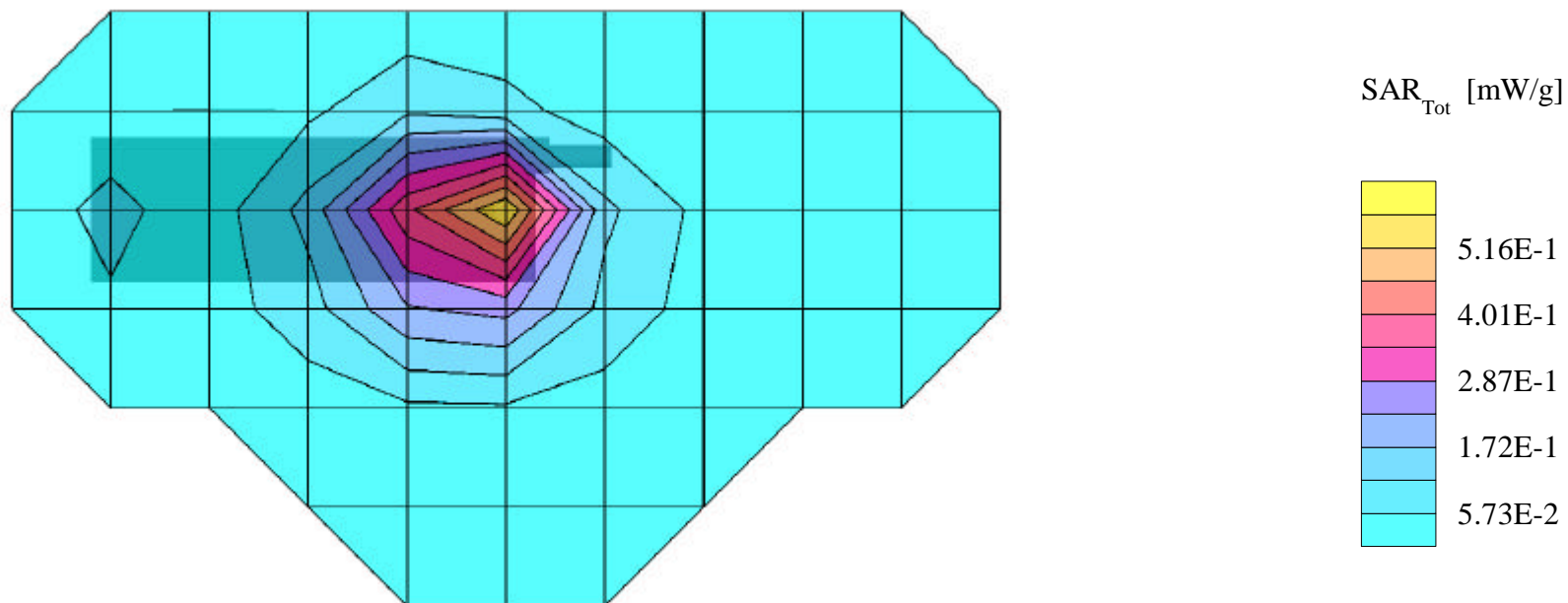
SAR (1g): 0.589 mW/g, SAR (10g): 0.336 mW/g

SANYO Dual-band Model: SCP-4500

PCS Mode, Ch.0600 [1880.00MHz]

Conducted Power = 22.4dBm; Spacing = 1.5cm from flat phantom to phone

Test Date -- 03-21-2000



SANYO FCC ID:AEZSCP-45H -- PCS Body SAR

Generic Twin Phantom; Flat Section; Probe: ET3DV5 - SN1370 -- Probe Cal Date 02/00

Med. Parameters 1900 MHz Muscle: $\sigma = 1.85$ mho/m $\epsilon_r = 54.2$ $\rho = 1.00$ g/cm³; Antenna Position -- Out; Crest Factor 1.0

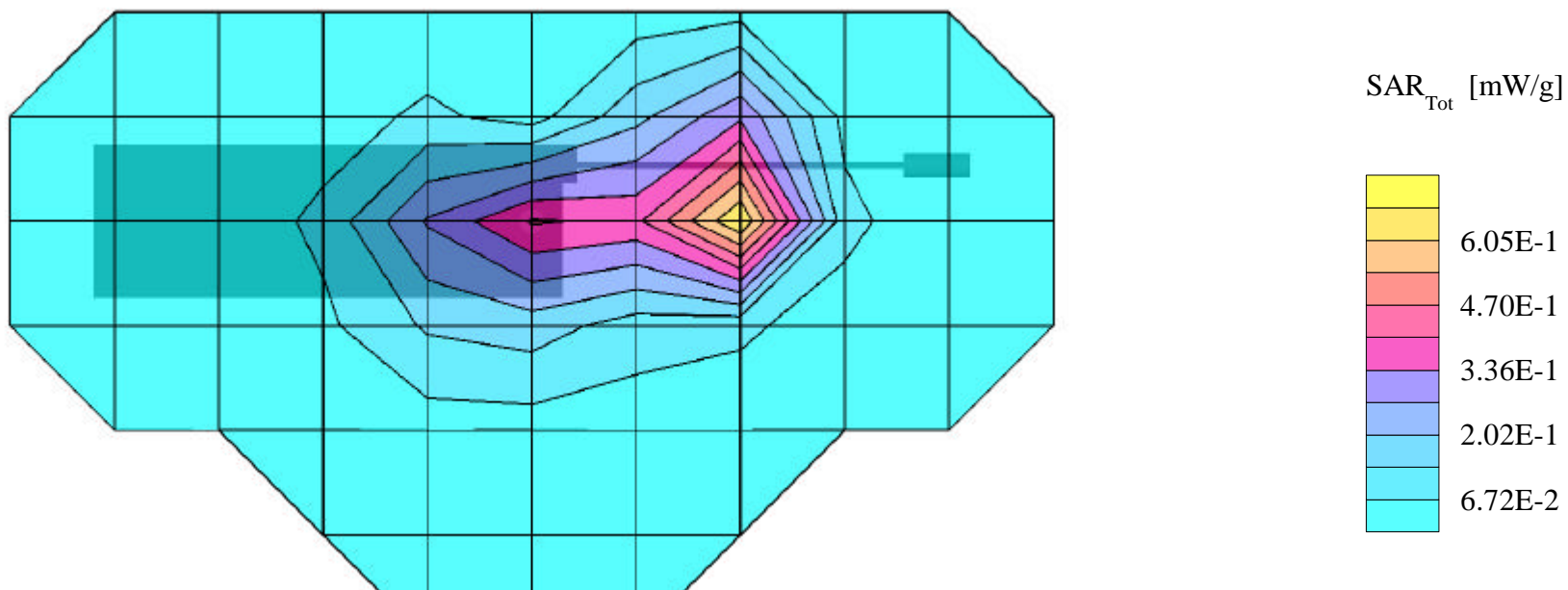
SAR (1g): 0.943 mW/g, SAR (10g): 0.505 mW/g

SANYO Dual-band Model: SCP-4500

PCS Mode, Ch.0600 [1880.00MHz]

Conducted Power = 22.4dBm; Spacing = 1.5cm from flat phantom to phone

Test Date -- 03-21-2000



SANYO FCC ID:AEZSCP-45H -- PCS Body SAR

Generic Twin Phantom; Flat Section; Probe: ET3DV5 - SN1370 -- Probe Cal Date 02/00

Med. Parameters 1900 MHz Muscle: $\sigma = 1.85$ mho/m $\epsilon_r = 54.2$ $\rho = 1.00$ g/cm³; Antenna Position -- In; Crest Factor 1.0

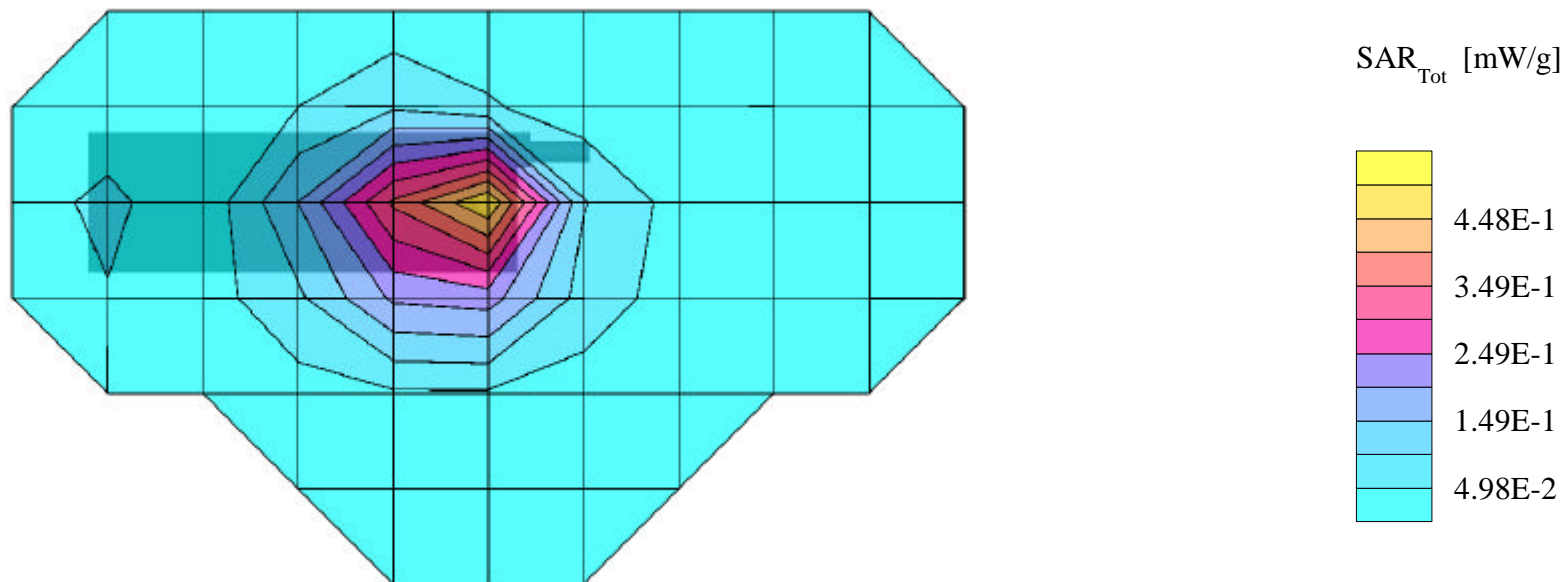
SAR (1g): 0.524 mW/g, SAR (10g): 0.297 mW/g

SANYO Dual-band Model: SCP-4500

PCS Mode, Ch.1175 [1908.75MHz]

Conducted Power = 22.2dBm; Spacing = 1.5cm from flat phantom to phone

Test Date -- 03-21-2000



SANYO FCC ID:AEZSCP-45H -- PCS Body SAR

Generic Twin Phantom; Flat Section; Probe: ET3DV5 - SN1370 -- Probe Cal Date 02/00

Med. Parameters 1900 MHz Muscle: $\sigma = 1.85$ mho/m $\epsilon_r = 54.2$ $\rho = 1.00$ g/cm³; Antenna Position -- Out; Crest Factor 1.0

SAR (1g): 0.937 mW/g, SAR (10g): 0.501 mW/g

SANYO Dual-band Model: SCP-4500

PCS Mode, Ch.1175 [1908.75MHz]

Conducted Power = 22.2dBm; Spacing = 1.5cm from flat phantom to phone

Test Date -- 03-21-2000

