

SANYO FCC ID: AEZSCP-400 Body SAR

Generic Twin Phantom; Flat Section;

Probe: ET3DV5 - SN1368 -- Probe Cal Date 2/99

Medium Parameters 835 Muscle: $\sigma = 0.95$ mho/m $\epsilon_r = 56.2$ $\rho = 1.00$ g/cm³

Antenna Position -- In; Crest Factor 1.0

SAR (1g): 0.461 mW/g, SAR (10g): 0.318 mW/g

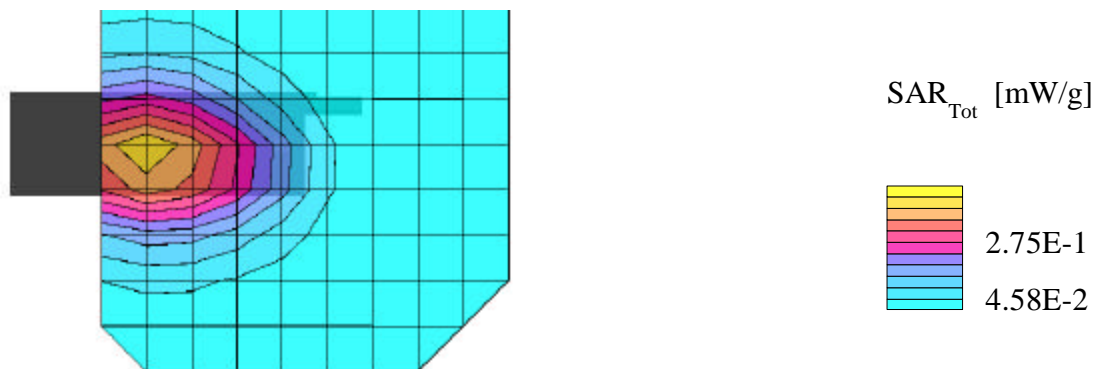
SANYO Dual-Mode Model: SCP-400

FM Mode, Ch.991 [824.04MHz]

Conducted Power = 27.0dBm

2cm spacing, no holder or belt clip

Test Date: 12-22-1999



SANYO FCC ID: AEZSCP-400 Body SAR

Generic Twin Phantom; Flat Section;

Probe: ET3DV5 - SN1368 -- Probe Cal Date 2/99

Medium Parameters 835 Muscle: $\sigma = 0.95$ mho/m $\epsilon_r = 56.2$ $\rho = 1.00$ g/cm³

Antenna Position -- Out; Crest Factor 1.0

SAR (1g): 1.05 mW/g, SAR (10g): 0.693 mW/g

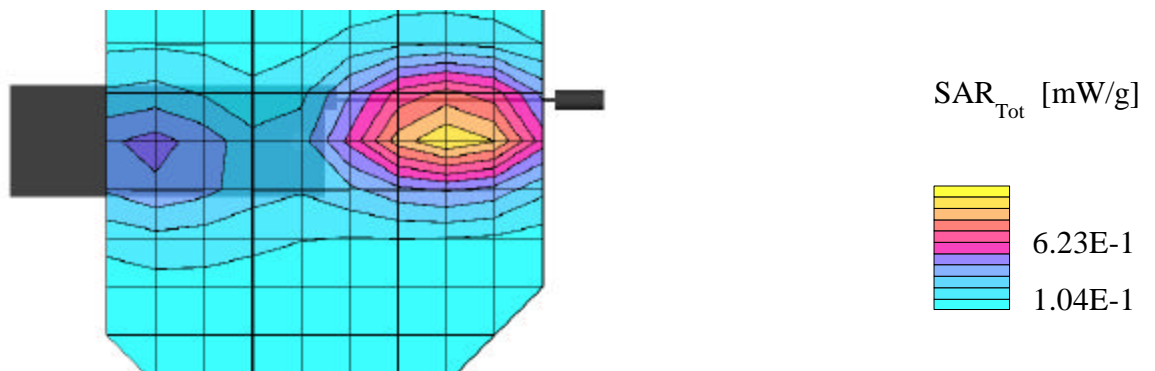
SANYO Dual-Mode Model: SCP-400

FM Mode, Ch.991 [824.04MHz]

Conducted Power = 27.0dBm

2cm spacing, no holder or belt clip

Test Date: 12-22-1999



SANYO FCC ID: AEZSCP-400 Body SAR

Generic Twin Phantom; Flat Section;

Probe: ET3DV5 - SN1368 -- Probe Cal Date 2/99

Medium Parameters 835 Muscle: $\sigma = 0.95$ mho/m $\epsilon_r = 56.2$ $\rho = 1.00$ g/cm³

Antenna Position -- In; Crest Factor 1.0

SAR (1g): 0.568 mW/g, SAR (10g): 0.390 mW/g

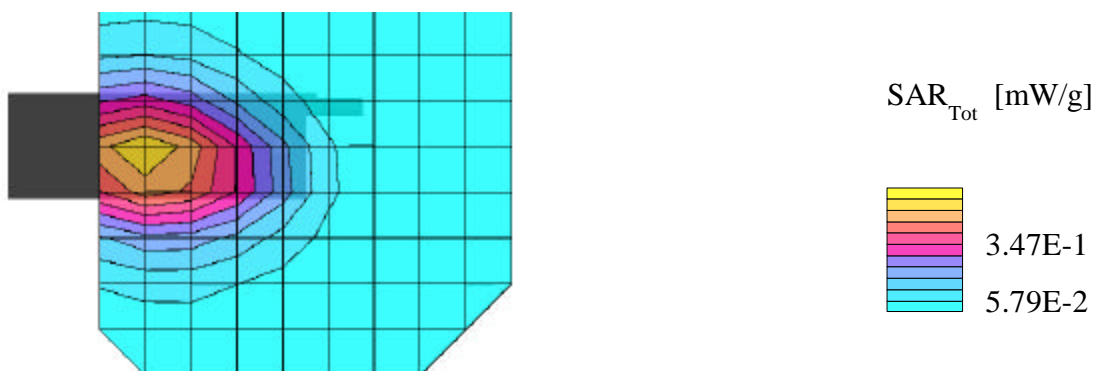
SANYO Dual-Mode Model: SCP-400

FM Mode, Ch.383 [836.49MHz]

Conducted Power = 26.9dBm

2cm spacing, no holder or belt clip

Test Date: 12-22-1999



SANYO FCC ID: AEZSCP-400 Body SAR

Generic Twin Phantom; Flat Section;

Probe: ET3DV5 - SN1368 -- Probe Cal Date 2/99

Medium Parameters 835 Muscle: $\sigma = 0.95$ mho/m $\epsilon_r = 56.2$ $\rho = 1.00$ g/cm³

Antenna Position -- Out; Crest Factor 1.0

SAR (1g): 1.18 mW/g, SAR (10g): 0.781 mW/g

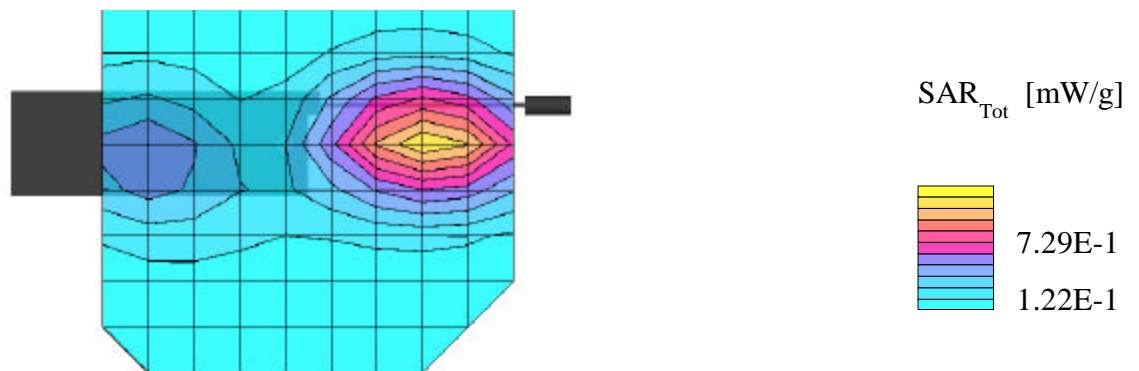
SANYO Dual-Mode Model: SCP-400

FM Mode, Ch.383 [836.49MHz]

Conducted Power = 26.9dBm

2cm spacing, no holder or belt clip

Test Date: 12-22-1999



SANYO FCC ID: AEZSCP-400 Body SAR

Generic Twin Phantom; Flat Section;

Probe: ET3DV5 - SN1368 -- Probe Cal Date 2/99

Medium Parameters 835 Muscle: $\sigma = 0.95$ mho/m $\epsilon_r = 56.2$ $\rho = 1.00$ g/cm³

Antenna Position -- In; Crest Factor 1.0

SAR (1g): 0.522 mW/g, SAR (10g): 0.358 mW/g

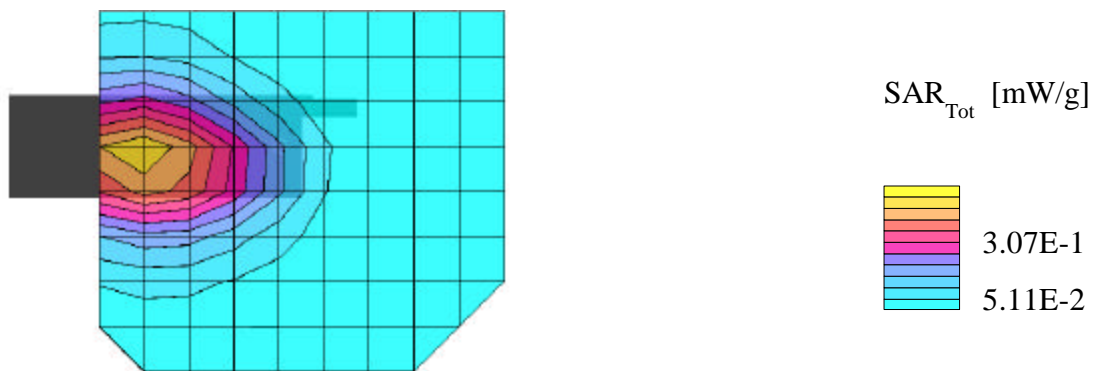
SANYO Dual-Mode Model: SCP-400

FM Mode, Ch.799 [848.97MHz]

Conducted Power = 26.9dBm

2cm spacing, no holder or belt clip

Test Date: 12-22-1999



SANYO FCC ID: AEZSCP-400 Body SAR

Generic Twin Phantom; Flat Section;

Probe: ET3DV5 - SN1368 -- Probe Cal Date 2/99

Medium Parameters 835 Muscle: $\sigma = 0.95$ mho/m $\epsilon_r = 56.2$ $\rho = 1.00$ g/cm³

Antenna Position -- Out; Crest Factor 1.0

SAR (1g): 1.29 mW/g, SAR (10g): 0.849 mW/g

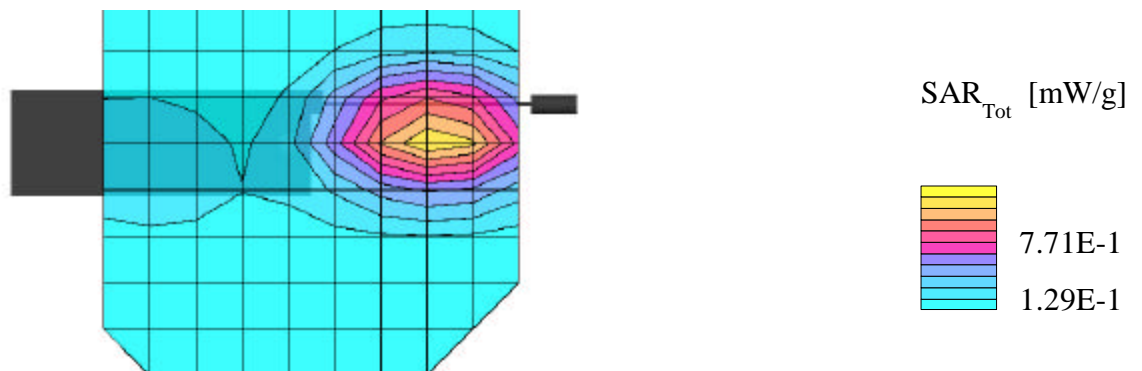
SANYO Dual-Mode Model: SCP-400

FM Mode, Ch.799 [848.79MHz]

Conducted Power = 26.9dBm

2cm spacing, no holder or belt clip

Test Date: 12-22-1999



SANYO FCC ID: AEZSCP-400 Body SAR

Generic Twin Phantom; Flat Section;

Probe: ET3DV5 - SN1368 -- Probe Cal Date 2/99

Medium Parameters 835 Muscle: $\sigma = 0.95$ mho/m $\epsilon_r = 56.2$ $\rho = 1.00$ g/cm³

Antenna Position -- In; Crest Factor 1.0

SAR (1g): 0.232 mW/g, SAR (10g): 0.158 mW/g

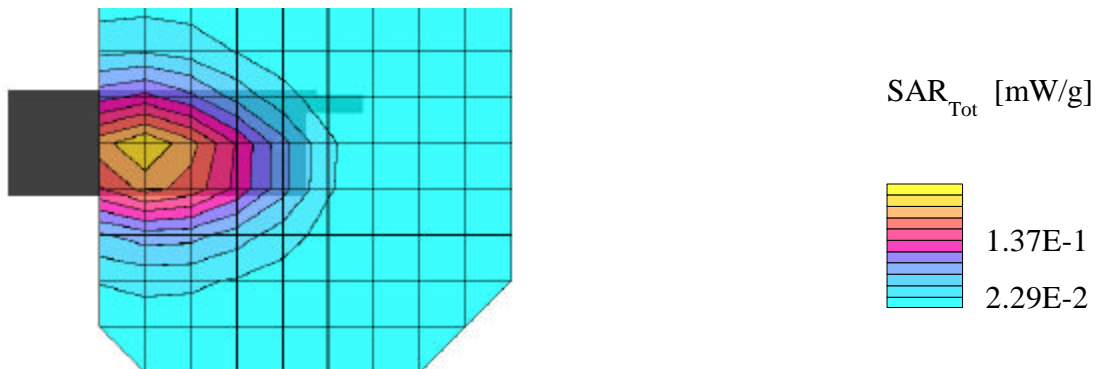
SANYO Dual-Mode Model: SCP-400

CDMA Mode, Ch.777 [848.31MHz]

Conducted Power = 23.8dBm

2cm spacing, no holder or belt clip

Test Date: 12-22-1999



SANYO FCC ID: AEZSCP-400 Body SAR

Generic Twin Phantom; Flat Section;

Probe: ET3DV5 - SN1368 -- Probe Cal Date 2/99

Medium Parameters 835 Muscle: $\sigma = 0.95$ mho/m $\epsilon_r = 56.2$ $\rho = 1.00$ g/cm³

Antenna Position -- Out; Crest Factor 1.0

SAR (1g): 0.659 mW/g, SAR (10g): 0.430 mW/g

SANYO Dual-Mode Model: SCP-400

CDMA Mode, Ch.777 [848.31MHz]

Conducted Power = 23.8dBm

2cm spacing, no holder or belt clip

Test Date: 12-22-1999

