

# SANYO FCC ID: AEZSCP-310 CDMA Body SAR

Generic Twin Phantom; Flat Section;

Probe: ET3DV5 - SN1368 -- Probe Cal Date 2/99

Medium Parameters 835 Muscle:  $\sigma = 0.95$  mho/m  $\epsilon_r = 56.2$   $\rho = 1.00$  g/cm<sup>3</sup>

Antenna Position -- In; Crest Factor 1.0

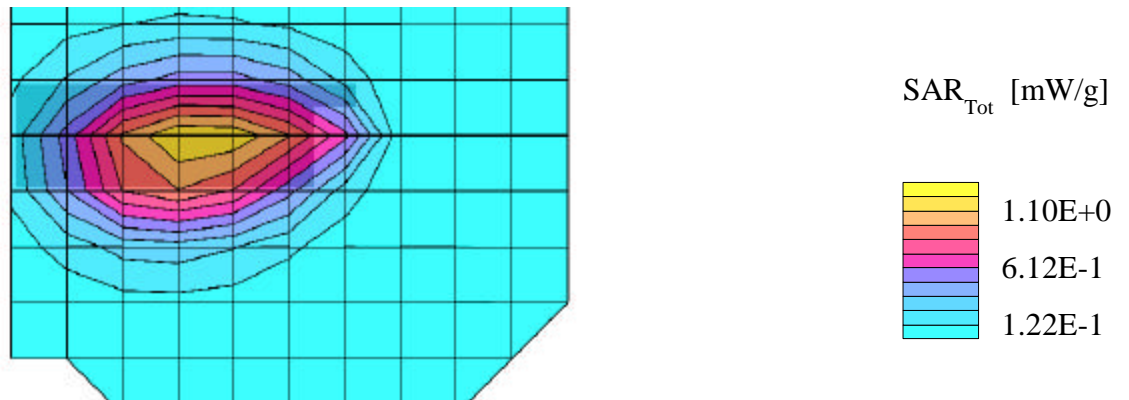
**SAR (1g): 1.25 mW/g**, SAR (10g): 0.856 mW/g

SANYO CDMA Only Model:SCP-310

CDMA Mode, Ch. 1013 [824.70MHz]

Conducted Power = 23.0dBm [flip = closed; no belt clip or holster, spacing = 0.5cm]

Test Date -- 01-10-2000



# SANYO FCC ID: AEZSCP-310 CDMA Body SAR

Generic Twin Phantom; Flat Section;

Probe: ET3DV5 - SN1368 -- Probe Cal Date 2/99

Medium Parameters 835 Muscle:  $\sigma = 0.95$  mho/m  $\epsilon_r = 56.2$   $\rho = 1.00$  g/cm<sup>3</sup>

Antenna Position -- Out; Crest Factor 1.0

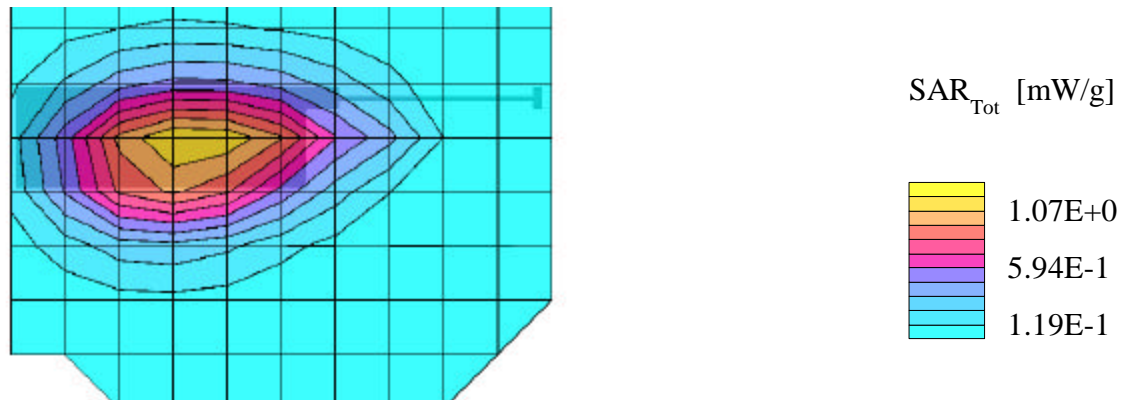
**SAR (1g): 1.21 mW/g**, SAR (10g): 0.831 mW/g

SANYO CDMA Only Model:SCP-310

CDMA Mode, Ch. 1013 [824.70MHz]

Conducted Power = 23.0dBm [flip = closed; no belt clip or holster, spacing = 0.5cm]

Test Date -- 01-10-2000



# SANYO FCC ID: AEZSCP-310 CDMA Body SAR

Generic Twin Phantom; Flat Section;

Probe: ET3DV5 - SN1368 -- Probe Cal Date 2/99

Medium Parameters 835 Muscle:  $\sigma = 0.95$  mho/m  $\epsilon_r = 56.2$   $\rho = 1.00$  g/cm<sup>3</sup>

Antenna Position -- In; Crest Factor 1.0

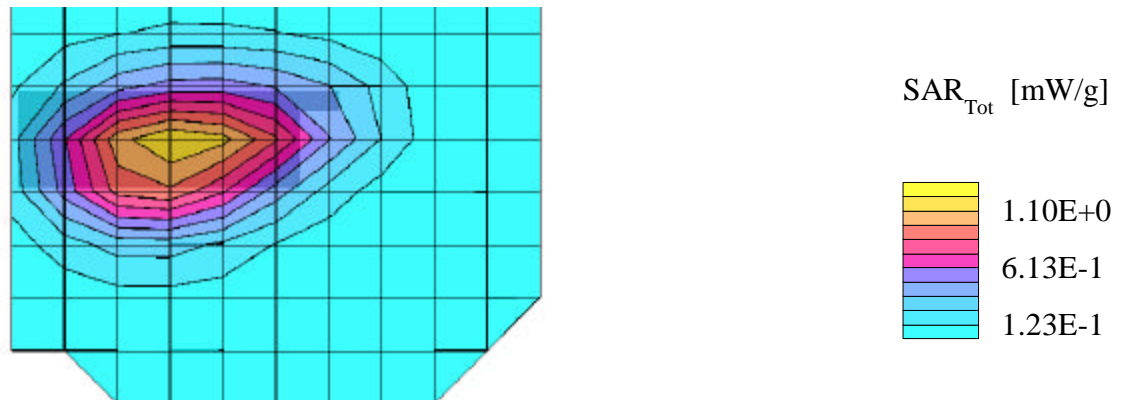
**SAR (1g): 1.24 mW/g**, SAR (10g): 0.845 mW/g

SANYO CDMA Only Model:SCP-310

CDMA Mode, Ch. 363 [835.89MHz]

Conducted Power = 23.1dBm [flip = closed; no belt clip or holster, spacing = 0.5cm]

Test Date -- 01-10-2000



# SANYO FCC ID: AEZSCP-310 CDMA Body SAR

Generic Twin Phantom; Flat Section;

Probe: ET3DV5 - SN1368 -- Probe Cal Date 2/99

Medium Parameters 835 Muscle:  $\sigma = 0.95$  mho/m  $\epsilon_r = 56.2$   $\rho = 1.00$  g/cm<sup>3</sup>

Antenna Position -- Out; Crest Factor 1.0

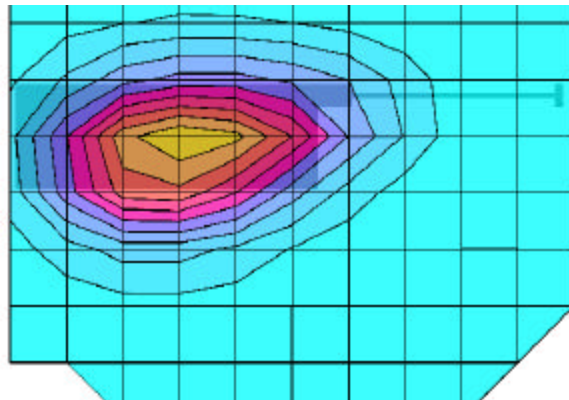
**SAR (1g): 1.25 mW/g**, SAR (10g): 0.851 mW/g

SANYO CDMA Only Model:SCP-310

CDMA Mode, Ch. 363 [835.89MHz]

Conducted Power = 23.1dBm [flip = closed; no belt clip or holster, spacing = 0.5cm]

Test Date -- 01-10-2000



SAR<sub>Tot</sub> [mW/g]



# SANYO FCC ID: AEZSCP-310 CDMA Body SAR

Generic Twin Phantom; Flat Section;

Probe: ET3DV5 - SN1368 -- Probe Cal Date 2/99

Medium Parameters 835 Muscle:  $\sigma = 0.95$  mho/m  $\epsilon_r = 56.2$   $\rho = 1.00$  g/cm<sup>3</sup>

Antenna Position -- In; Crest Factor 1.0

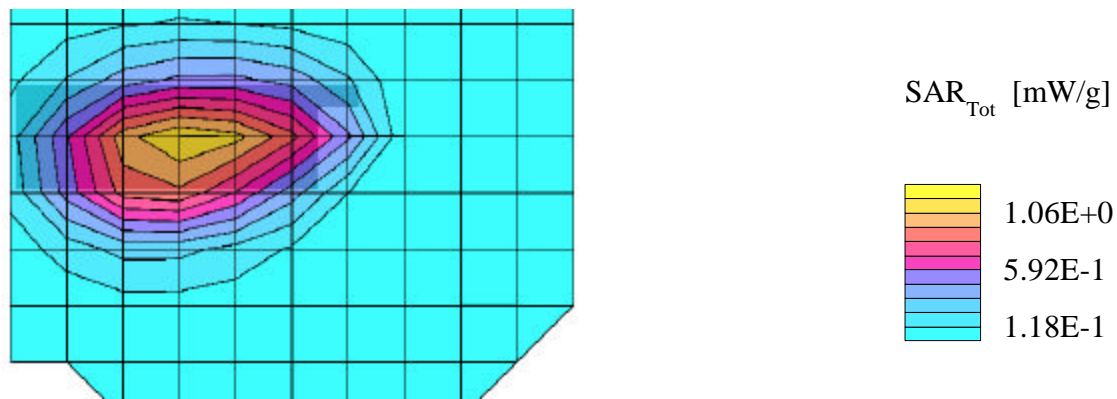
**SAR (1g): 1.20 mW/g**, SAR (10g): 0.809 mW/g

SANYO CDMA Only Model:SCP-310

CDMA Mode, Ch. 777 [848.31MHz]

Conducted Power = 22.8dBm [flip = closed; no belt clip or holster, spacing = 0.5cm]

Test Date -- 01-10-2000



# SANYO FCC ID: AEZSCP-310 CDMA Body SAR

Generic Twin Phantom; Flat Section;

Probe: ET3DV5 - SN1368 -- Probe Cal Date 2/99

Medium Parameters 835 Muscle:  $\sigma = 0.95$  mho/m  $\epsilon_r = 56.2$   $\rho = 1.00$  g/cm<sup>3</sup>

Antenna Position -- Out; Crest Factor 1.0

**SAR (1g): 1.31 mW/g**, SAR (10g): 0.884 mW/g

SANYO CDMA Only Model:SCP-310

CDMA Mode, Ch. 777 [848.31MHz]

Conducted Power = 22.8dBm [flip = closed; no belt clip or holster, spacing = 0.5cm]

Test Date -- 01-10-2000

