

SANYO FCC ID: AEZSCP-310 CDMA Brain SAR

Generic Twin Phantom; Left Hand Section;

Probe: ET3DV5 - SN1368 -- Probe Cal Date 2/99

Medium Parameters 835 MHz: $\sigma = 0.86$ mho/m $\epsilon_r = 42.5$ $\rho = 1.00$ g/cm³

Antenna Position -- In; Crest Factor 1.0

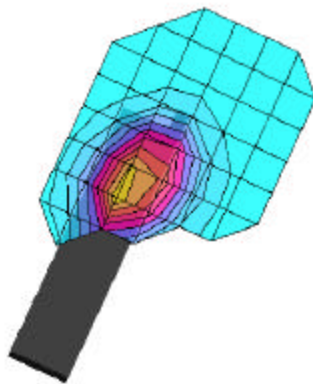
SAR (1g): 1.34 mW/g, SAR (10g): 0.837 mW/g

SANYO CDMA Only Model:SCP-310

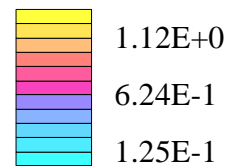
CDMA Mode, Ch. 1013 [824.70MHz]

Conducted Power = 23.0dBm [flip = open]

Test Date -- 01-10-2000



SAR_{Tot} [mW/g]



SANYO FCC ID: AEZSCP-310 CDMA Brain SAR

Generic Twin Phantom; Left Hand Section;

Probe: ET3DV5 - SN1368 -- Probe Cal Date 2/99

Medium Parameters 835 MHz: $\sigma = 0.86$ mho/m $\epsilon_r = 42.5$ $\rho = 1.00$ g/cm³

Antenna Position -- Out; Crest Factor 1.0

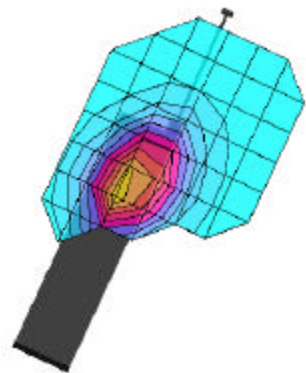
SAR (1g): 1.24 mW/g, SAR (10g): 0.772 mW/g

SANYO CDMA Only Model:SCP-310

CDMA Mode, Ch. 1013 [824.70MHz]

Conducted Power = 23.0dBm [flip = open]

Test Date -- 01-10-2000



SAR_{Tot} [mW/g]



SANYO FCC ID: AEZSCP-310 CDMA Brain SAR

Generic Twin Phantom; Left Hand Section;

Probe: ET3DV5 - SN1368 -- Probe Cal Date 2/99

Medium Parameters 835 MHz: $\sigma = 0.86$ mho/m $\epsilon_r = 42.5$ $\rho = 1.00$ g/cm³

Antenna Position -- In; Crest Factor 1.0

SAR (1g): 1.31 mW/g, SAR (10g): 0.807 mW/g

SANYO CDMA Only Model:SCP-310

CDMA Mode, Ch. 363 [835.89MHz]

Conducted Power = 23.1dBm [flip = open]

Test Date -- 01-10-2000



SANYO FCC ID: AEZSCP-310 CDMA Brain SAR

Generic Twin Phantom; Left Hand Section;

Probe: ET3DV5 - SN1368 -- Probe Cal Date 2/99

Medium Parameters 835 MHz: $\sigma = 0.86$ mho/m $\epsilon_r = 42.5$ $\rho = 1.00$ g/cm³

Antenna Position -- Out; Crest Factor 1.0

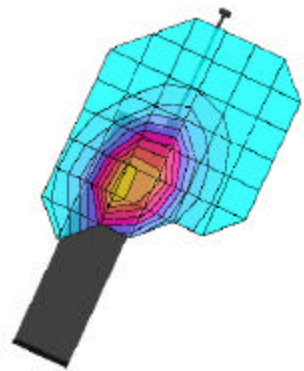
SAR (1g): 1.33 mW/g, SAR (10g): 0.891 mW/g

SANYO CDMA Only Model:SCP-310

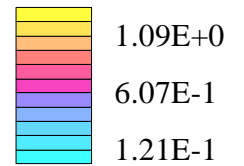
CDMA Mode, Ch. 363 [835.89MHz]

Conducted Power = 23.1dBm [flip = open]

Test Date -- 01-10-2000



SAR_{Tot} [mW/g]



SANYO FCC ID: AEZSCP-310 CDMA Brain SAR

Generic Twin Phantom; Left Hand Section;

Probe: ET3DV5 - SN1368 -- Probe Cal Date 2/99

Medium Parameters 835 MHz: $\sigma = 0.86$ mho/m $\epsilon_r = 42.5$ $\rho = 1.00$ g/cm³

Antenna Position -- In; Crest Factor 1.0

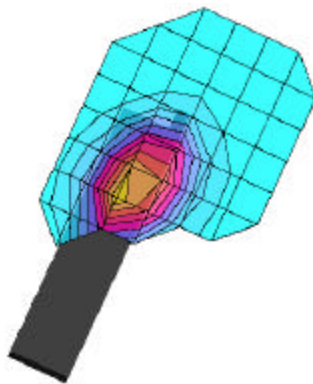
SAR (1g): 1.35 mW/g, SAR (10g): 0.835 mW/g

SANYO CDMA Only Model:SCP-310

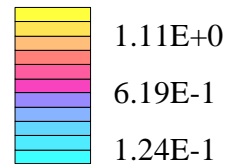
CDMA Mode, Ch. 777 [848.31MHz]

Conducted Power = 22.8dBm [flip = open]

Test Date -- 01-10-2000



SAR_{Tot} [mW/g]



SANYO FCC ID: AEZSCP-310 CDMA Brain SAR

Generic Twin Phantom; Left Hand Section;

Probe: ET3DV5 - SN1368 -- Probe Cal Date 2/99

Medium Parameters 835 MHz: $\sigma = 0.86$ mho/m $\epsilon_r = 42.5$ $\rho = 1.00$ g/cm³

Antenna Position -- Out; Crest Factor 1.0

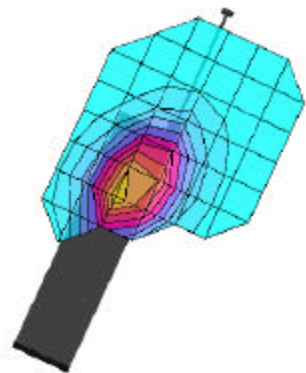
SAR (1g): 1.37 mW/g, SAR (10g): 0.854 mW/g

SANYO CDMA Only Model:SCP-310

CDMA Mode, Ch. 777 [848.31MHz]

Conducted Power = 22.8dBm [flip = open]

Test Date -- 01-10-2000



SAR_{Tot} [mW/g]

