

File : c:/idx3/SYSTEM/SARMEAS3/data/Normal/98071406_ZOOM.VLT
Start : 14-Jul-98 02:10:16 pm End : 14-Jul-98 02:18:41 pm

Radio Type : SANYO
Model Number : SCP-3000
Serial Number : 0001
Frequency : 836.49 MHz
Peak Trans. Pwr : 0.400 W
Start Trans. Pwr: 0.400 W
Antenna Type : Helical
Antenna Posn. : Out
Phantom Type : Head
Phantom Posn. : Left Ear
Scan Type : ZOOM/SAR
Probe Name : PCTEST
Field Type : E Field
Orientation : 0 Degrees

Mixture Type = Brain
Mixture Dielectric Constant = 43.400
Mixture Conductivity = 0.900

Comment :
CHAN 0283 FM MODE
DUAL BAND PHONE
PCTEST ENGINEERING LABORATORY

Robot : PCTEST

Probe Offset = 0.25 cm
Sensor Factor = 0.0108
Conversion Factor = 0.790

PCTEST Amplifier Channel Settings : 0.168 0.136 0.132

Diode Coefficients:

Channel 1	An=-10.851	Bn=86.223	Cn=38.593	Dn=-0.016	Mn=0.026	Yn=0.000
Channel 2	An=-21.618	Bn=92.335	Cn=34.909	Dn=-0.019	Mn=0.029	Yn=0.000
Channel 3	An=-11.171	Bn=50.619	Cn=19.002	Dn=-0.025	Mn=0.052	Yn=0.001

Max Location : X = 2.750, Y = 1.000, Z = 0.000 (cm) Value = 4.498

Measured Values (volts) =

4.584E-003	3.020E-003	1.458E-003	5.755E-004	2.638E-005	-8.081E-004
-7.269E-004	-1.107E-003	-9.882E-004	-1.231E-003	-1.267E-003	-1.093E-003
-1.120E-003					

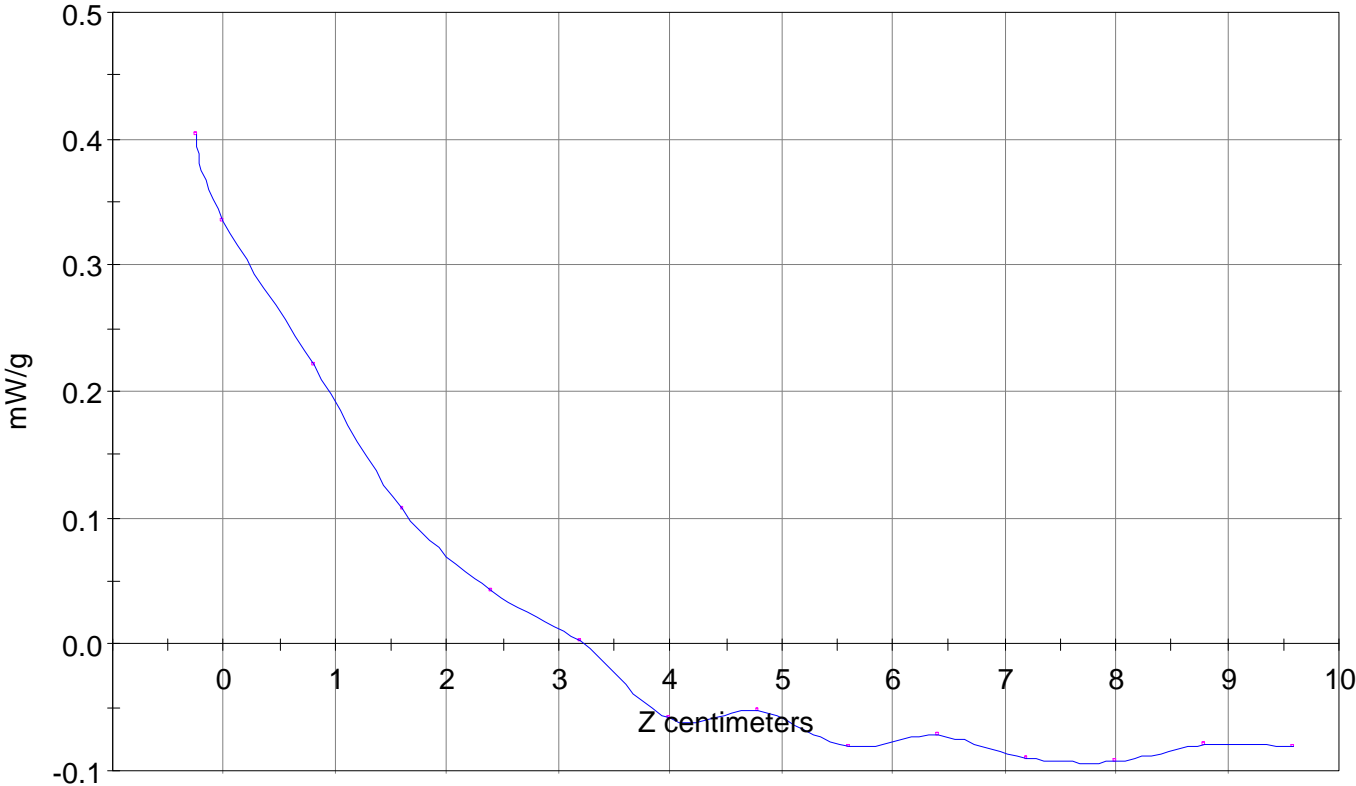
Calc. Voltage @ Surface (Vs) = 0.0055

Voltage @ 1.00 cm (Vt) = 0.0031

Ave. Voltage (Vs+Vt)/2 = 0.0043

Ave. SAR over 1 g (mW/g) = 0.3153

SAR Scan
File : 98071406_ZOOM
Start : 14-Jul-98 02:10:16 pm End : 14-Jul-98 02:18:41 pm
SANYO/SCP-3000/0001;836.49MHz;W;Helical/Out;
Head/Left Ear;ZOOM/SAR;PCTEST/E Field/0 DegreesBrain/43.400/0.900



File : c:/idx3/SYSTEM/SARMEAS3/data/Normal/98071407_ZOOM.VLT
Start : 14-Jul-98 02:25:37 pm End : 14-Jul-98 02:37:34 pm

Radio Type : SANYO
Model Number : SCP-3000
Serial Number : 0001
Frequency : 824.04 MHz
Peak Trans. Pwr : 0.400 W
Start Trans. Pwr: 0.400 W
Antenna Type : Helical
Antenna Posn. : In
Phantom Type : Head
Phantom Posn. : Left Ear
Scan Type : ZOOM/SAR
Probe Name : PCTEST
Field Type : E Field
Orientation : 0 Degrees

Mixture Type = Brain
Mixture Dielectric Constant = 43.400
Mixture Conductivity = 0.900

Comment :
CHAN 0991 FM MODE
DUAL BAND PHONE
PCTEST ENGINEERING LABORATORY

Robot : PCTEST

Probe Offset = 0.25 cm
Sensor Factor = 0.0108
Conversion Factor = 0.790

PCTEST Amplifier Channel Settings : 0.168 0.136 0.132

Diode Coefficients:

Channel 1	An=-10.851	Bn=86.223	Cn=38.593	Dn=-0.016	Mn=0.026	Yn=0.000
Channel 2	An=-21.618	Bn=92.335	Cn=34.909	Dn=-0.019	Mn=0.029	Yn=0.000
Channel 3	An=-11.171	Bn=50.619	Cn=19.002	Dn=-0.025	Mn=0.052	Yn=0.001

Max Location : X = 2.500, Y = 1.250, Z = 0.000 (cm) Value = 12.050

Measured Values (volts) =

1.219E-002	8.825E-003	4.375E-003	2.250E-003	9.126E-004	1.299E-005
-4.808E-004	-4.286E-004	-6.145E-004	-1.057E-003	-9.719E-004	-8.505E-004
-9.992E-004					

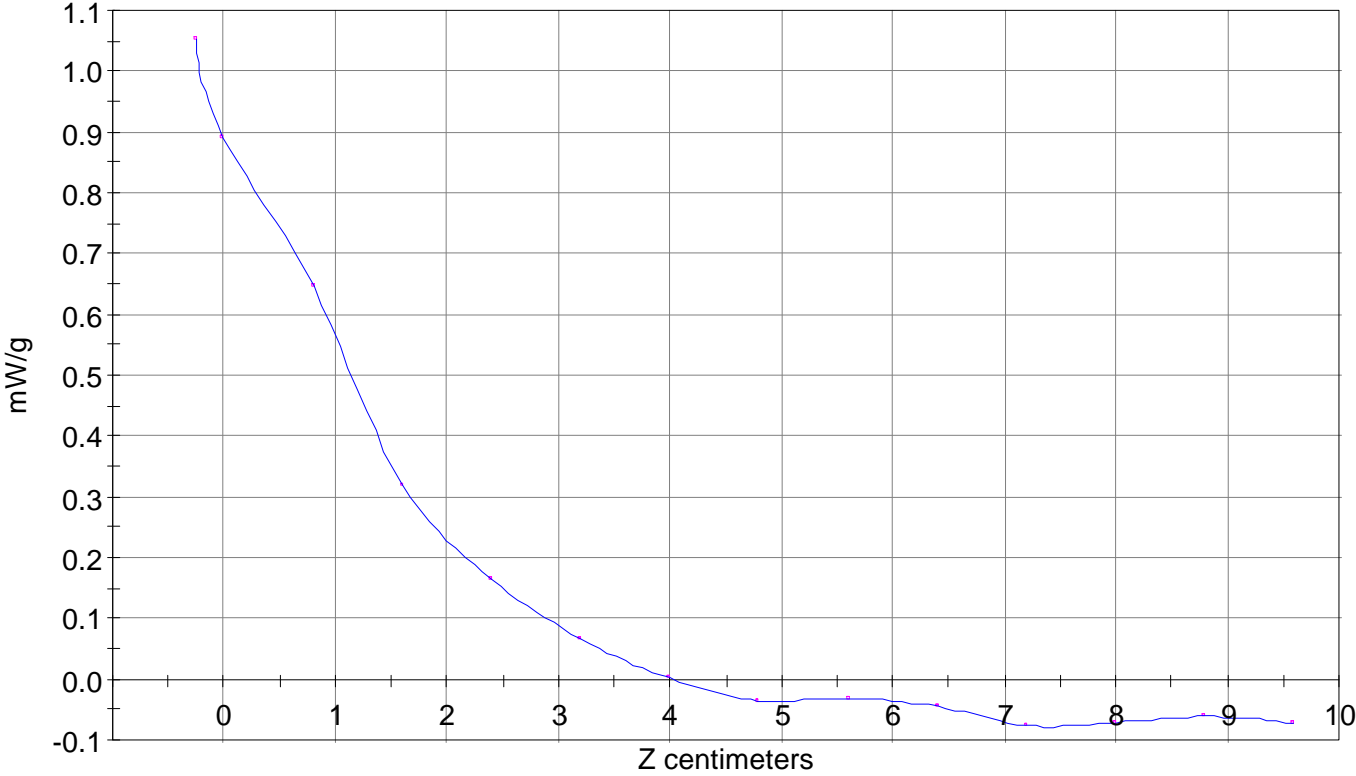
Calc. Voltage @ Surface (Vs) = 0.0144

Voltage @ 1.00 cm (Vt) = 0.0090

Ave. Voltage (Vs+Vt)/2 = 0.0117

Ave. SAR over 1 g (mW/g) = 0.8565

SAR Scan
File : 98071407_ZOOM
Start : 14-Jul-98 02:25:37 pm End : 14-Jul-98 02:37:34 pm
SANYO/SCP-3000/0001;824.04MHz;W;Helical/In;
Head/Left Ear;ZOOM/SAR;PCTEST/E Field/0 DegreesBrain/43.400/0.900

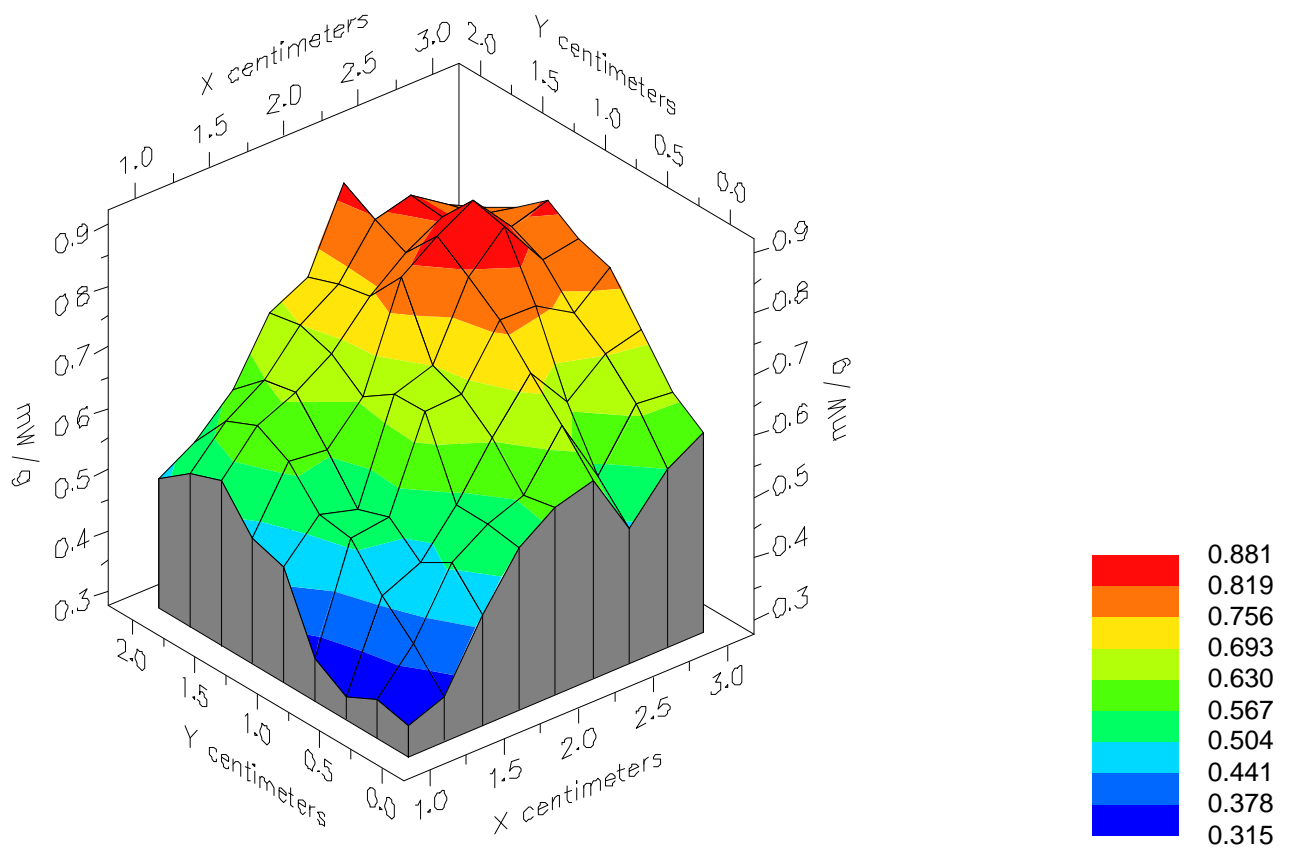


File : 98071407_ZOOM

Start : 14-Jul-98 02:25:37 pm End : 14-Jul-98 02:37:34 pm

SANYO/SCP-3000/0001;824.04MHz;W;Helical/In;

Head/Left Ear;ZOOM/SAR;PCTEST/E Field/0 DegreesBrain/43.400/0.900

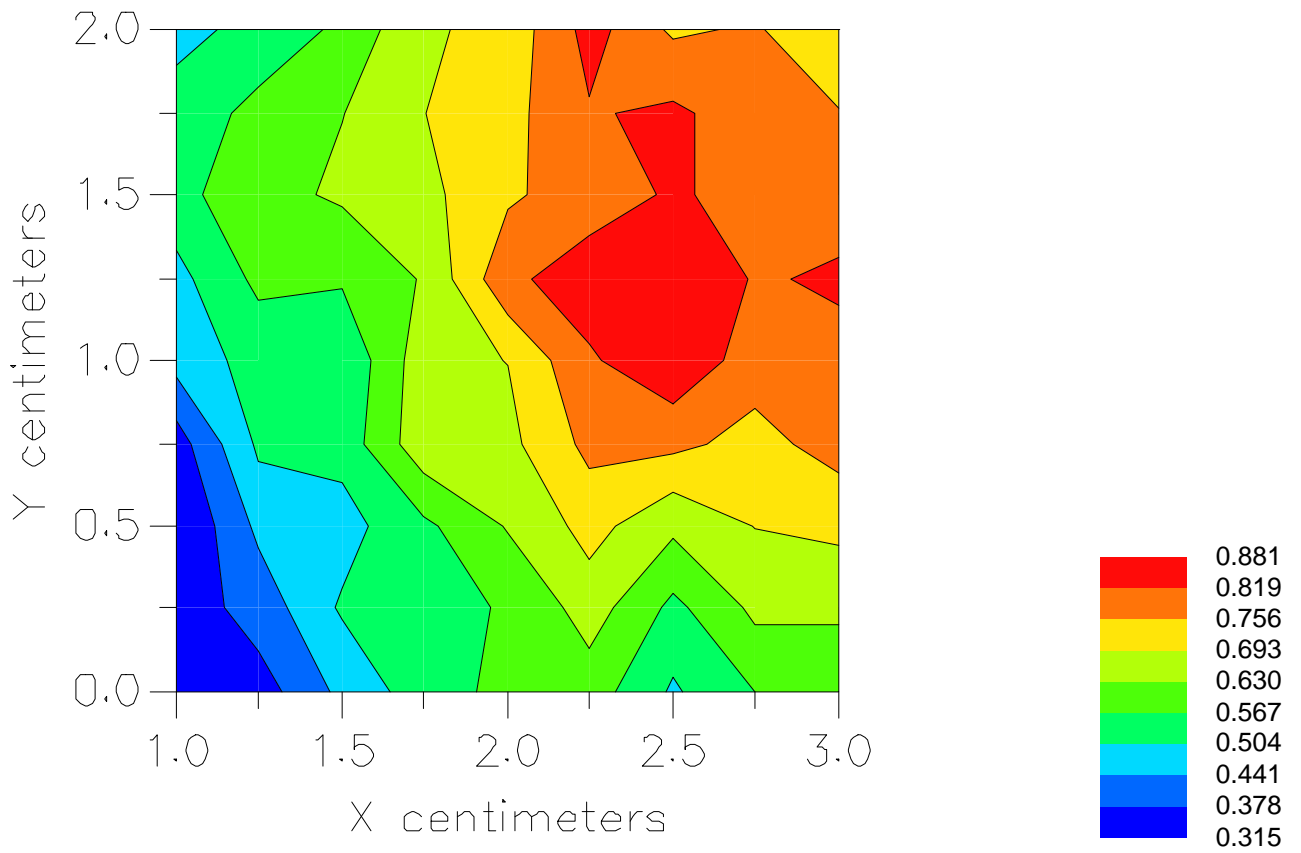


File : 98071407_ZOOM

Start : 14-Jul-98 02:25:37 pm End : 14-Jul-98 02:37:34 pm

SANYO/SCP-3000/0001;824.04MHz;W;Helical/In;

Head/Left Ear;ZOOM/SAR;PCTEST/E Field/0 DegreesBrain/43.400/0.900



File : c:/idx3/SYSTEM/SARMEAS3/data/Normal/98071408_ZOOM.VLT
Start : 14-Jul-98 02:41:27 pm End : 14-Jul-98 02:53:49 pm

Radio Type : SANYO
Model Number : SCP-3000
Serial Number : 0001
Frequency : 836.49 MHz
Peak Trans. Pwr : 0.400 W
Start Trans. Pwr: 0.400 W
Antenna Type : Helical
Antenna Posn. : In
Phantom Type : Head
Phantom Posn. : Left Ear
Scan Type : ZOOM/SAR
Probe Name : PCTEST
Field Type : E Field
Orientation : 0 Degrees

Mixture Type = Brain
Mixture Dielectric Constant = 43.400
Mixture Conductivity = 0.900

Comment :
CHAN 0383 FM MODE
DUAL BAND PHONE
PCTEST ENGINEERING LABORATORY

Robot : PCTEST

Probe Offset = 0.25 cm
Sensor Factor = 0.0108
Conversion Factor = 0.790

PCTEST Amplifier Channel Settings : 0.168 0.136 0.132

Diode Coefficients:

Channel 1	An=-10.851	Bn=86.223	Cn=38.593	Dn=-0.016	Mn=0.026	Yn=0.000
Channel 2	An=-21.618	Bn=92.335	Cn=34.909	Dn=-0.019	Mn=0.029	Yn=0.000
Channel 3	An=-11.171	Bn=50.619	Cn=19.002	Dn=-0.025	Mn=0.052	Yn=0.001

Max Location : X = 2.250, Y = 1.750, Z = 0.000 (cm) Value = 11.175

Measured Values (volts) =

1.147E-002	7.861E-003	4.130E-003	1.866E-003	7.933E-004	-2.754E-005
-4.815E-004	-8.304E-004	-6.880E-004	-1.059E-003	-1.169E-003	-1.021E-003
-1.162E-003					

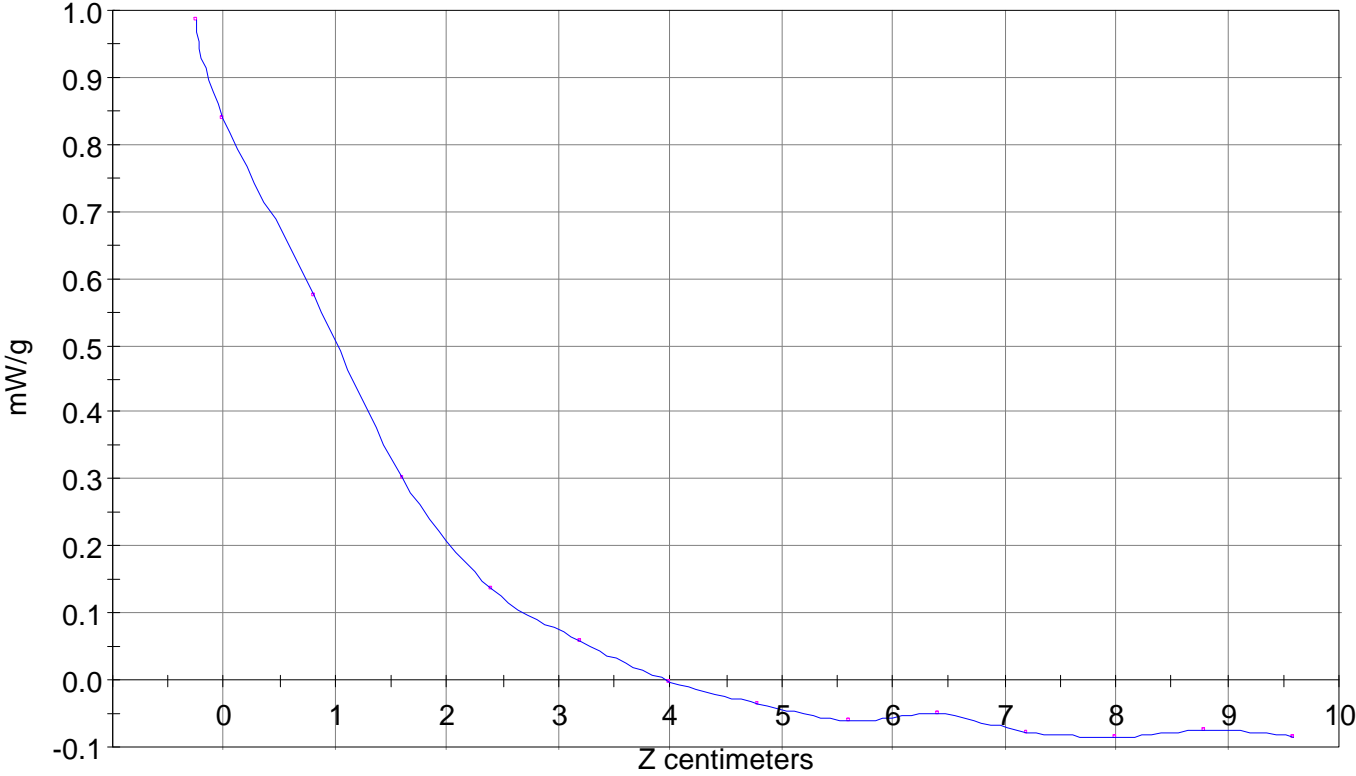
Calc. Voltage @ Surface (Vs) = 0.0135

Voltage @ 1.00 cm (Vt) = 0.0081

Ave. Voltage (Vs+Vt)/2 = 0.0108

Ave. SAR over 1 g (mW/g) = 0.7893

SAR Scan
File : 98071408_ZOOM
Start : 14-Jul-98 02:41:27 pm End : 14-Jul-98 02:53:49 pm
SANYO/SCP-3000/0001;836.49MHz;W;Helical/In;
Head/Left Ear;ZOOM/SAR;PCTEST/E Field/0 DegreesBrain/43.400/0.900



File : c:/idx3/SYSTEM/SARMEAS3/data/Normal/98071409_ZOOM.VLT
Start : 14-Jul-98 03:00:42 pm End : 14-Jul-98 03:12:57 pm

Radio Type : SANYO
Model Number : SCP-3000
Serial Number : 0001
Frequency : 848.97 MHz
Peak Trans. Pwr : 0.400 W
Start Trans. Pwr: 0.400 W
Antenna Type : Helical
Antenna Posn. : In
Phantom Type : Head
Phantom Posn. : Left Ear
Scan Type : ZOOM/SAR
Probe Name : PCTEST
Field Type : E Field
Orientation : 0 Degrees

Mixture Type = Brain
Mixture Dielectric Constant = 43.400
Mixture Conductivity = 0.900

Comment :
CHAN 0799 FM MODE
DUAL BAND PHONE
PCTEST ENGINEERING LABORATORY

Robot : PCTEST

Probe Offset = 0.25 cm
Sensor Factor = 0.0108
Conversion Factor = 0.790

PCTEST Amplifier Channel Settings : 0.168 0.136 0.132

Diode Coefficients:

Channel 1	An=-10.851	Bn=86.223	Cn=38.593	Dn=-0.016	Mn=0.026	Yn=0.000
Channel 2	An=-21.618	Bn=92.335	Cn=34.909	Dn=-0.019	Mn=0.029	Yn=0.000
Channel 3	An=-11.171	Bn=50.619	Cn=19.002	Dn=-0.025	Mn=0.052	Yn=0.001

Max Location : X = 2.500, Y = 1.000, Z = 0.000 (cm) Value = 10.720

Measured Values (volts) =

1.107E-002	7.854E-003	3.954E-003	2.210E-003	8.653E-004	-2.496E-004
-9.077E-004	-9.844E-004	-1.124E-003	-1.210E-003	-1.232E-003	-1.137E-003
-1.170E-003					

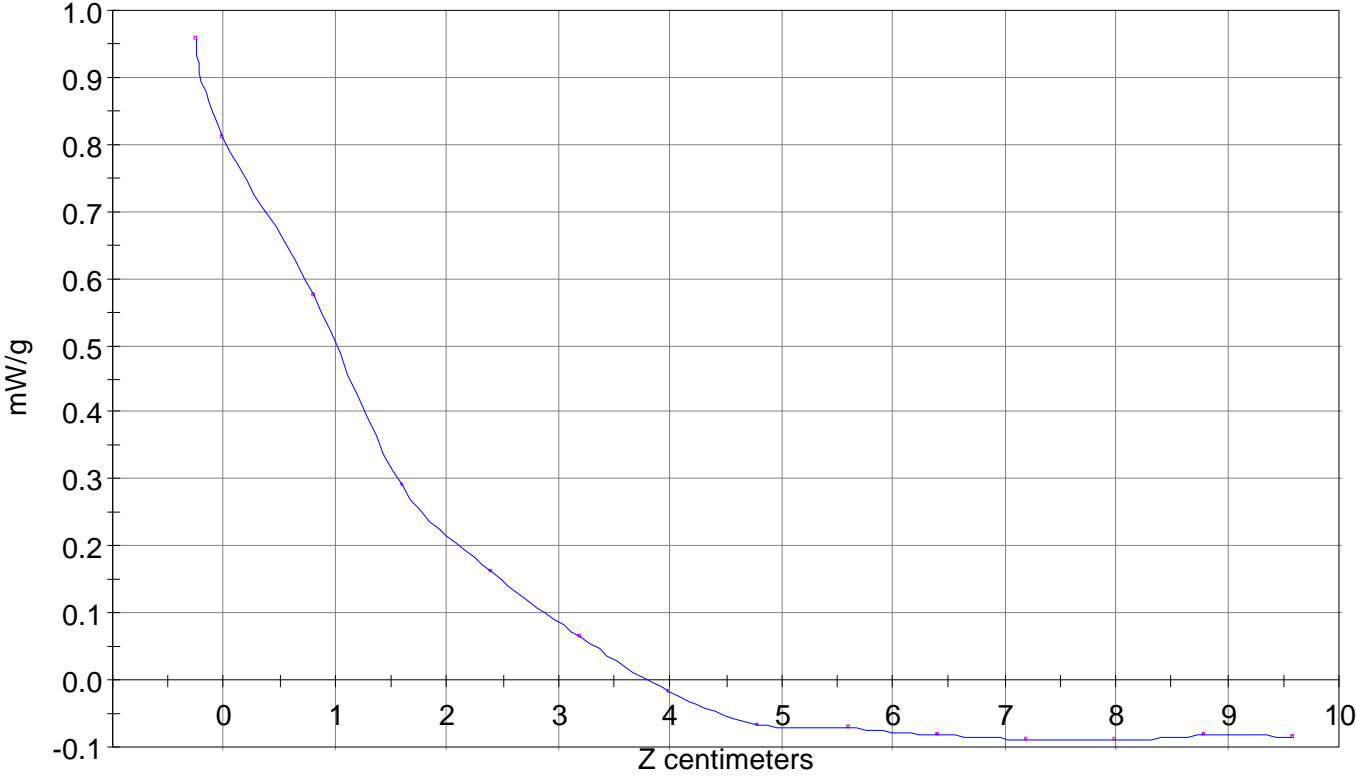
Calc. Voltage @ Surface (Vs) = 0.0131

Voltage @ 1.00 cm (Vt) = 0.0081

Ave. Voltage (Vs+Vt)/2 = 0.0106

Ave. SAR over 1 g (mW/g) = 0.7724

SAR Scan
File : 98071409_ZOOM
Start : 14-Jul-98 03:00:42 pm End : 14-Jul-98 03:12:57 pm
SANYO/SCP-3000/0001;848.97MHz;W;Helical/In;
Head/Left Ear;ZOOM/SAR;PCTEST/E Field/0 DegreesBrain/43.400/0.900



File : c:/idx3/SYSTEM/SARMEAS3/data/Normal/98071410_ZOOM.VLT
Start : 14-Jul-98 03:19:55 pm End : 14-Jul-98 03:31:52 pm

Radio Type : SANYO
Model Number : SCP-3000
Serial Number : 0001
Frequency : 824.04 MHz
Peak Trans. Pwr : 0.400 W
Start Trans. Pwr: 0.400 W
Antenna Type : Helical
Antenna Posn. : Out
Phantom Type : Head
Phantom Posn. : Left Ear
Scan Type : ZOOM/SAR
Probe Name : PCTEST
Field Type : E Field
Orientation : 0 Degrees

Mixture Type = Brain
Mixture Dielectric Constant = 43.400
Mixture Conductivity = 0.900

Comment :
CHAN 0991 FM MODE
DUAL BAND PHONE
PCTEST ENGINEERING LABORATORY

Robot : PCTEST

Probe Offset = 0.25 cm
Sensor Factor = 0.0108
Conversion Factor = 0.790

PCTEST Amplifier Channel Settings : 0.168 0.136 0.132

Diode Coefficients:

Channel 1	An=-10.851	Bn=86.223	Cn=38.593	Dn=-0.016	Mn=0.026	Yn=0.000
Channel 2	An=-21.618	Bn=92.335	Cn=34.909	Dn=-0.019	Mn=0.029	Yn=0.000
Channel 3	An=-11.171	Bn=50.619	Cn=19.002	Dn=-0.025	Mn=0.052	Yn=0.001

Max Location : X = 3.250, Y = 0.750, Z = 0.000 (cm) Value = 5.474

Measured Values (volts) =

5.459E-003	4.014E-003	1.697E-003	1.011E-003	-1.793E-005	-6.323E-004
-7.262E-004	-7.009E-004	-8.964E-004	-9.212E-004	-9.698E-004	-8.826E-004
-1.001E-003					

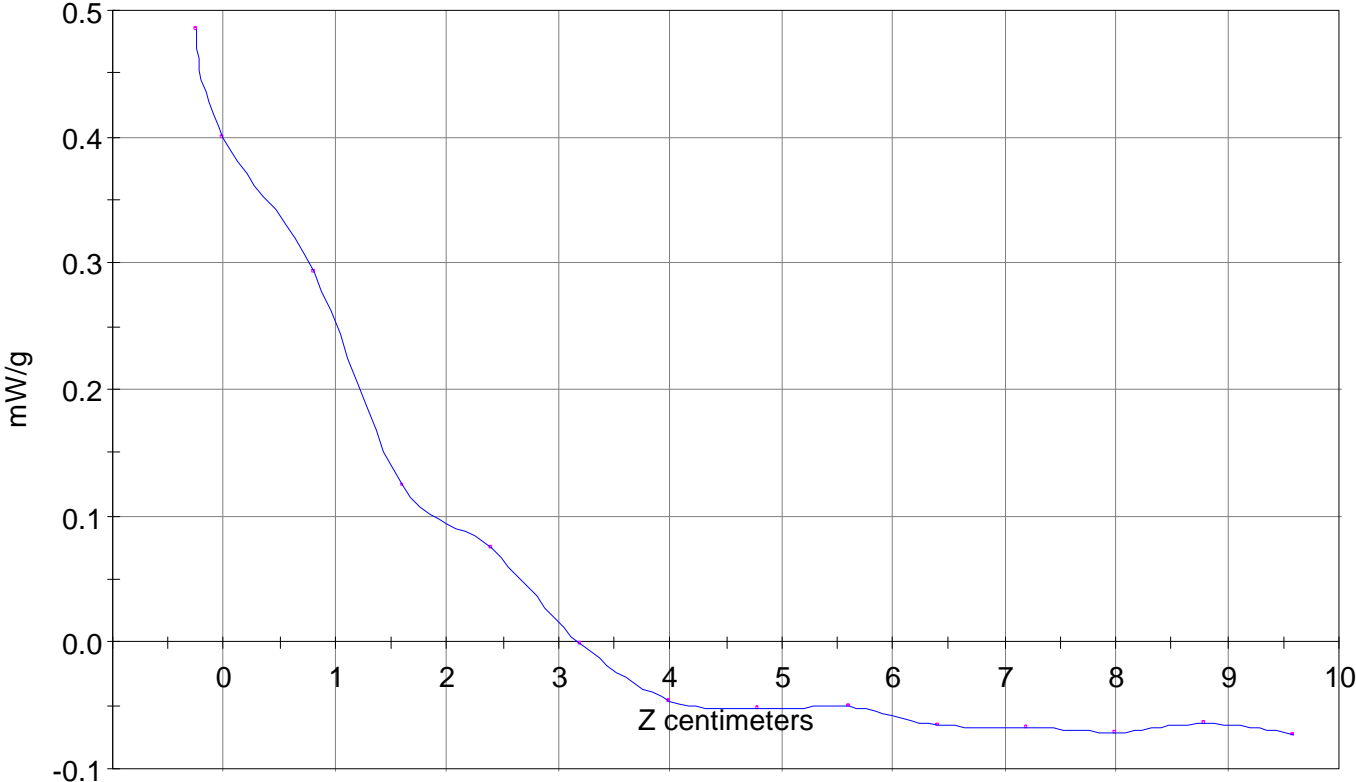
Calc. Voltage @ Surface (Vs) = 0.0066

Voltage @ 1.00 cm (Vt) = 0.0041

Ave. Voltage (Vs+Vt)/2 = 0.0054

Ave. SAR over 1 g (mW/g) = 0.3926

SAR Scan
File : 98071410_ZOOM
Start : 14-Jul-98 03:19:55 pm End : 14-Jul-98 03:31:52 pm
SANYO/SCP-3000/0001;824.04MHz;W;Helical/Out;
Head/Left Ear;ZOOM/SAR;PCTEST/E Field/0 DegreesBrain/43.400/0.900



File : c:/idx3/SYSTEM/SARMEAS3/data/Normal/98071412_ZOOM.VLT

Start : 14-Jul-98 04:08:55 pm End : 14-Jul-98 04:15:42 pm

Radio Type : SANYO
Model Number : SCP-3000
Serial Number : 0001
Frequency : 848.97 MHz
Peak Trans. Pwr : 0.400 W
Start Trans. Pwr : 0.400 W
Antenna Type : Helical
Antenna Posn. : Out
Phantom Type : Head
Phantom Posn. : Left Ear
Scan Type : ZOOM/SAR
Probe Name : PCTEST
Field Type : E Field
Orientation : 0 Degrees

Mixture Type = Brain
Mixture Dielectric Constant = 43.400
Mixture Conductivity = 0.900

Comment :

CHAN 799 FM MODE
DUAL BAND PHONE
PCTEST ENGINEERING LABORATORY

Robot : PCTEST

Probe Offset = 0.25 cm
Sensor Factor = 0.0108
Conversion Factor = 0.790

PCTEST Amplifier Channel Settings : 0.168 0.136 0.132

Diode Coefficients:

Channel 1	An=-10.851	Bn=86.223	Cn=38.593	Dn=-0.016	Mn=0.026	Yn=0.000
Channel 2	An=-21.618	Bn=92.335	Cn=34.909	Dn=-0.019	Mn=0.029	Yn=0.000
Channel 3	An=-11.171	Bn=50.619	Cn=19.002	Dn=-0.025	Mn=0.052	Yn=0.001

Max Location : X = 2.500, Y = 1.000, Z = 0.000 (cm) Value = 3.320

Measured Values (volts) =

3.784E-003	2.410E-003	7.165E-004	2.667E-004	-5.245E-005	-1.099E-003
-6.667E-004	-9.848E-004	-9.939E-004	-1.148E-003	-1.231E-003	-8.327E-004
-1.032E-003					

Calc. Voltage @ Surface (Vs) = 0.0050

Voltage @ 1.00 cm (Vt) = 0.0025

Ave. Voltage (Vs+Vt)/2 = 0.0038

Ave. SAR over 1 g (mW/g) = 0.2748

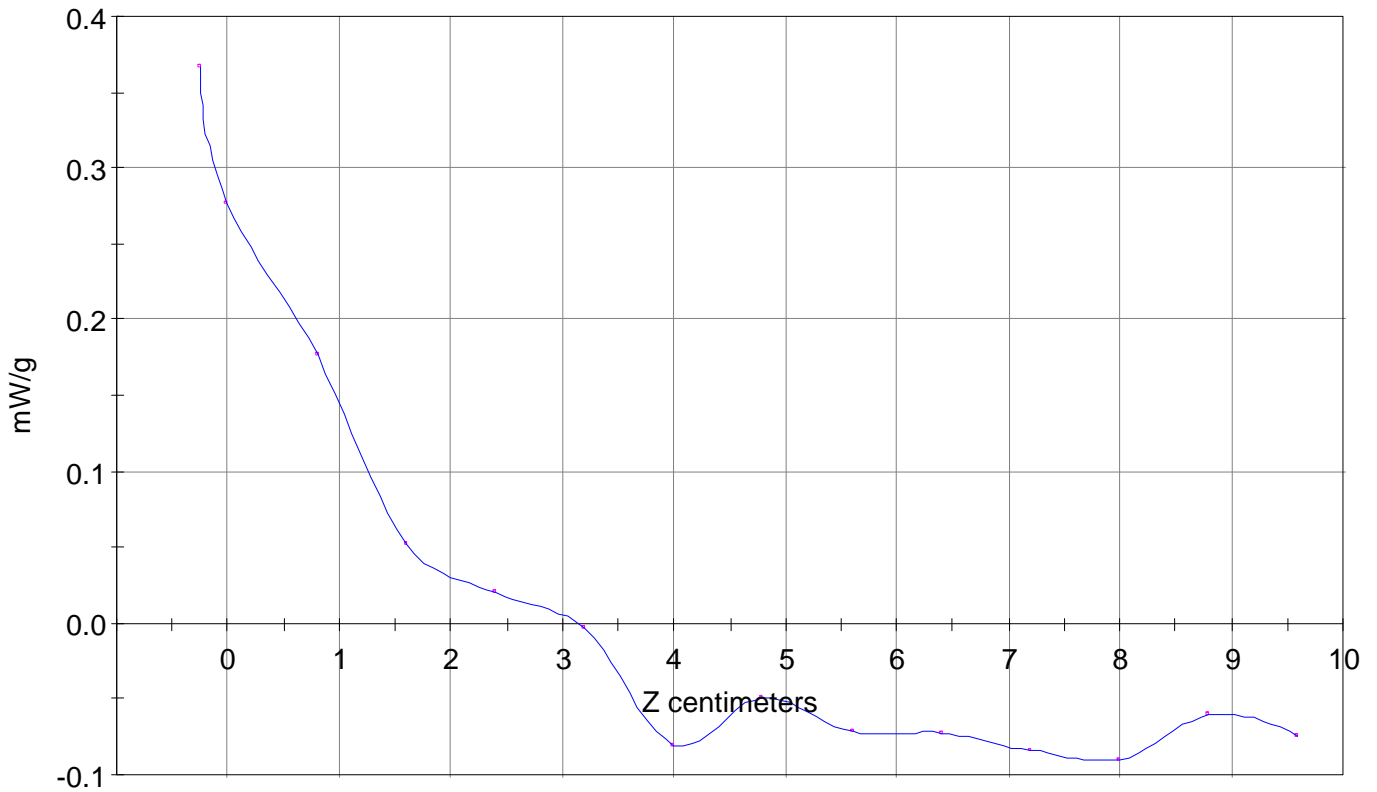
SAR Scan

File : 98071412_ZOOM

Start : 14-Jul-98 04:08:55 pm End : 14-Jul-98 04:15:42 pm

SANYO/SCP-3000/0001;848.97MHz;W;Helical/Out;

Head/Left Ear;ZOOM/SAR;PCTEST/E Field/0 DegreesBrain/43.400/0.900



File : c:/idx3/SYSTEM/SARMEAS3/data/Normal/98071511_ZOOM.VLT
Start : 15-Jul-98 04:31:14 pm End : 15-Jul-98 04:40:45 pm

Radio Type : SANYO
Model Number : SCP-3000
Serial Number : 0001
Frequency : 1880 MHz
Peak Trans. Pwr : 0.200 W
Start Trans. Pwr : 0.200 W
Antenna Type : Helical
Antenna Posn. : In
Phantom Type : Head
Phantom Posn. : Left Ear
Scan Type : ZOOM/SAR
Probe Name : PCTEST
Field Type : E Field
Orientation : 0 Degrees

Mixture Type = Brain
Mixture Dielectric Constant = 41.300
Mixture Conductivity = 1.260

Comment :
CHAN 0600 CDMA MODE
DUAL BAND PHONE
PCTEST ENGINEERING LABORATORY

Robot : PCTEST

Probe Offset = 0.25 cm
Sensor Factor = 0.0108
Conversion Factor = 1.200

PCTEST Amplifier Channel Settings : 0.250 0.233 0.225

Diode Coefficients:

Channel 1	An=-52.065	Bn=113.200	Cn=39.840	Dn=0.001	Mn=0.024	Yn=0.000
Channel 2	An=0.000	Bn=0.000	Cn=0.000	Dn=0.000	Mn=0.000	Yn=0.000
Channel 3	An=0.000	Bn=0.000	Cn=0.000	Dn=0.000	Mn=0.000	Yn=0.000

Max Location : X = 2.750, Y = 0.750, Z = 0.000 (cm) Value = 4.419

Measured Values (volts) =

4.255E-003	3.513E-003	1.779E-003	9.225E-004	7.313E-004	5.853E-004
3.603E-004	3.719E-004	5.521E-004	2.846E-004	2.400E-005	1.175E-004
2.400E-005					

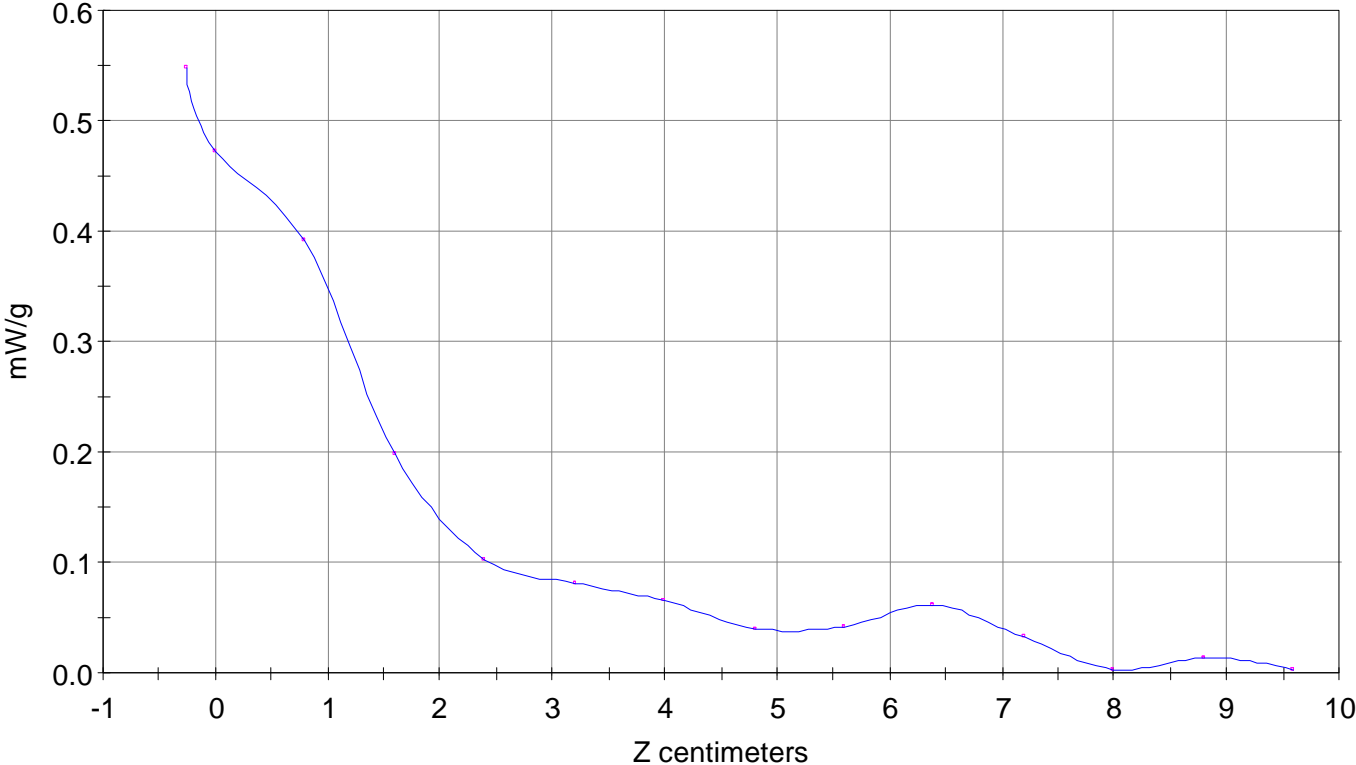
Calc. Voltage @ Surface (Vs) = 0.0049

Voltage @ 1.00 cm (Vt) = 0.0036

Ave. Voltage (Vs+Vt)/2 = 0.0042

Ave. SAR over 1 g (mW/g) = 0.4712

SAR Scan
File : 98071511_ZOOM
Start : 15-Jul-98 04:31:14 pm End : 15-Jul-98 04:40:45 pm
SANYO/SCP-3000/0001;1880MHz;W;Helical/In;
Head/Left Ear;ZOOM/SAR;PCTEST/E Field/0 DegreesBrain/41.300/1.260



File : c:/idx3/SYSTEM/SARMEAS3/data/Normal/98071513_ZOOM.VLT
Start : 15-Jul-98 04:43:42 pm End : 15-Jul-98 04:53:35 pm

Radio Type : SANYO
Model Number : SCP-3000
Serial Number : 0001
Frequency : 1851.25 MHz
Peak Trans. Pwr : 0.200 W
Start Trans. Pwr: 0.200 W
Antenna Type : Helical
Antenna Posn. : In
Phantom Type : Head
Phantom Posn. : Left Ear
Scan Type : ZOOM/SAR
Probe Name : PCTEST
Field Type : E Field
Orientation : 0 Degrees

Mixture Type = Brain
Mixture Dielectric Constant = 41.300
Mixture Conductivity = 1.260

Comment :
CHAN 0025 CDMA MODE
DUAL BAND PHONE
PCTEST ENGINEERING LABORATORY

Robot : PCTEST

Probe Offset = 0.25 cm
Sensor Factor = 0.0108
Conversion Factor = 1.200

PCTEST Amplifier Channel Settings : 0.250 0.233 0.225

Diode Coefficients:

Channel 1	An=-52.065	Bn=113.200	Cn=39.840	Dn=0.001	Mn=0.024	Yn=0.000
Channel 2	An=0.000	Bn=0.000	Cn=0.000	Dn=0.000	Mn=0.000	Yn=0.000
Channel 3	An=0.000	Bn=0.000	Cn=0.000	Dn=0.000	Mn=0.000	Yn=0.000

Max Location : X = 2.750, Y = 0.500, Z = 0.000 (cm) Value = 4.342

Measured Values (volts) =

4.394E-003	3.350E-003	1.425E-003	6.922E-004	3.381E-004	4.934E-004
1.314E-004	2.870E-004	1.495E-004	2.400E-005	3.421E-005	1.072E-004
2.880E-004					

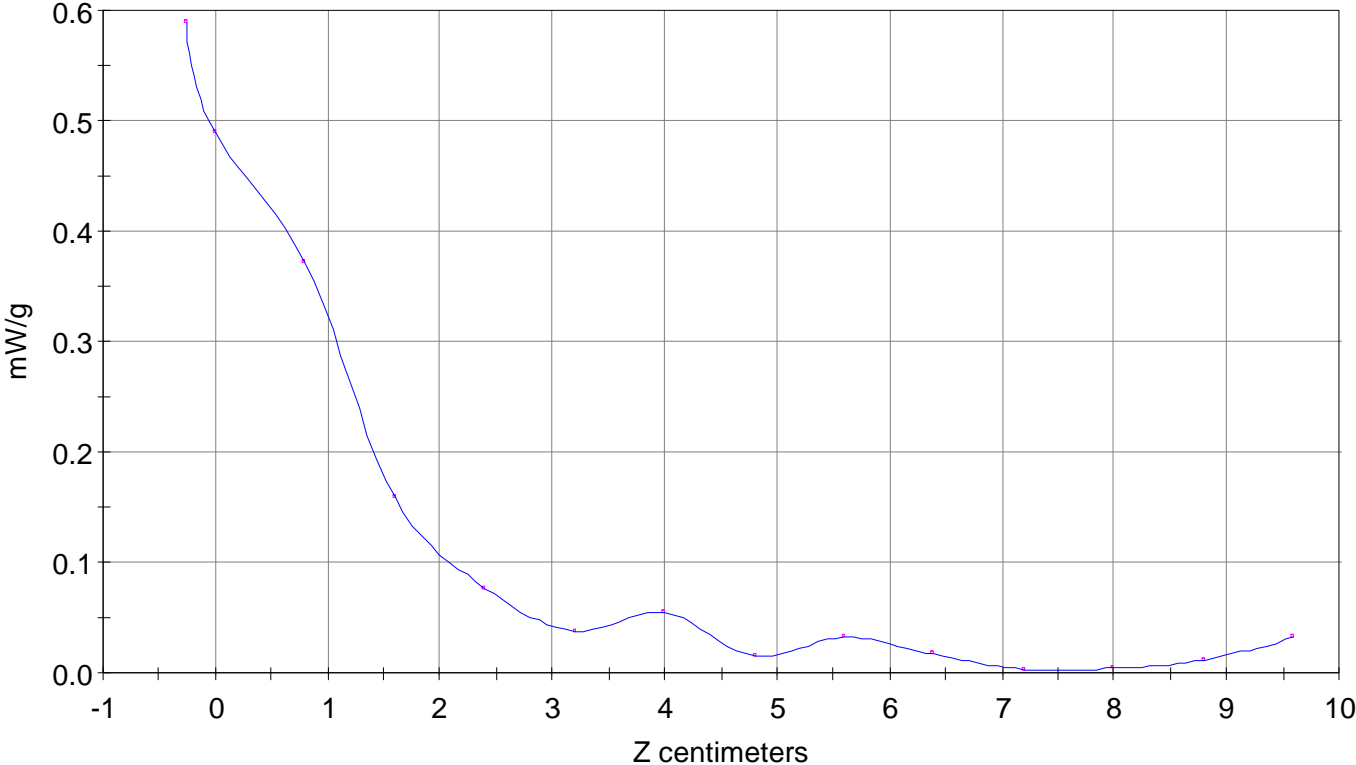
Calc. Voltage @ Surface (Vs) = 0.0053

Voltage @ 1.00 cm (Vt) = 0.0034

Ave. Voltage (Vs+Vt)/2 = 0.0044

Ave. SAR over 1 g (mW/g) = 0.4847

SAR Scan
File : 98071513_ZOOM
Start : 15-Jul-98 04:43:42 pm End : 15-Jul-98 04:53:35 pm
SANYO/SCP-3000/0001;1851.25MHz;W;Helical/In;
Head/Left Ear;ZOOM/SAR;PCTEST/E Field/0 DegreesBrain/41.300/1.260



File : c:/idx3/SYSTEM/SARMEAS3/data/Normal/98071514_ZOOM.VLT
Start : 15-Jul-98 04:54:28 pm End : 15-Jul-98 05:04:33 pm

Radio Type : SANYO
Model Number : SCP-3000
Serial Number : 0001
Frequency : 1908.75 MHz
Peak Trans. Pwr : 0.200 W
Start Trans. Pwr : 0.200 W
Antenna Type : Helical
Antenna Posn. : In
Phantom Type : Head
Phantom Posn. : Left Ear
Scan Type : ZOOM/SAR
Probe Name : PCTEST
Field Type : E Field
Orientation : 0 Degrees

Mixture Type = Brain
Mixture Dielectric Constant = 41.300
Mixture Conductivity = 1.260

Comment :
CHAN 1175 CDMA MODE
DUAL BAND PHONE
PCTEST ENGINEERING LABORATORY

Robot : PCTEST

Probe Offset = 0.25 cm
Sensor Factor = 0.0108
Conversion Factor = 1.200

PCTEST Amplifier Channel Settings : 0.250 0.233 0.225

Diode Coefficients:

Channel 1	An=-52.065	Bn=113.200	Cn=39.840	Dn=0.001	Mn=0.024	Yn=0.000
Channel 2	An=0.000	Bn=0.000	Cn=0.000	Dn=0.000	Mn=0.000	Yn=0.000
Channel 3	An=0.000	Bn=0.000	Cn=0.000	Dn=0.000	Mn=0.000	Yn=0.000

Max Location : X = 2.750, Y = 1.000, Z = 0.000 (cm) Value = 4.354

Measured Values (volts) =

4.528E-003	3.331E-003	1.663E-003	6.976E-004	2.748E-004	2.943E-004
1.933E-004	3.913E-004	2.941E-004	2.369E-004	1.704E-004	4.079E-004
3.660E-004					

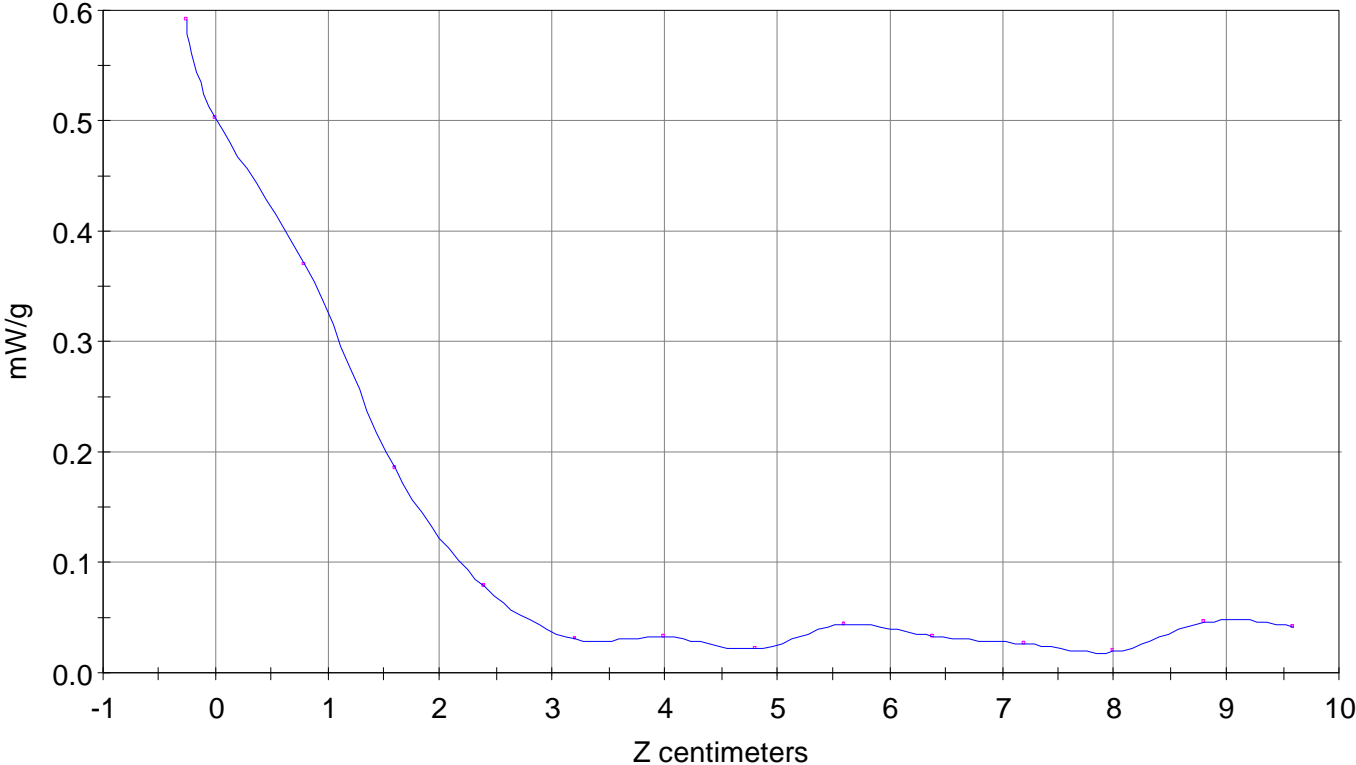
Calc. Voltage @ Surface (Vs) = 0.0053

Voltage @ 1.00 cm (Vt) = 0.0034

Ave. Voltage (Vs+Vt)/2 = 0.0044

Ave. SAR over 1 g (mW/g) = 0.4851

SAR Scan
File : 98071514_ZOOM
Start : 15-Jul-98 04:54:28 pm End : 15-Jul-98 05:04:33 pm
SANYO/SCP-3000/0001;1908.75MHz;W;Helical/In;
Head/Left Ear;ZOOM/SAR;PCTEST/E Field/0 DegreesBrain/41.300/1.260



File : c:/idx3/SYSTEM/SARMEAS3/data/Normal/98071516_ZOOM.VLT
Start : 15-Jul-98 05:11:01 pm End : 15-Jul-98 05:20:51 pm

Radio Type : SANYO
Model Number : SCP-3000
Serial Number : 0001
Frequency : 1851.25 MHz
Peak Trans. Pwr : 0.200 W
Start Trans. Pwr : 0.200 W
Antenna Type : Helical
Antenna Posn. : Out
Phantom Type : Head
Phantom Posn. : Left Ear
Scan Type : ZOOM/SAR
Probe Name : PCTEST
Field Type : E Field
Orientation : 0 Degrees

Mixture Type = Brain
Mixture Dielectric Constant = 41.300
Mixture Conductivity = 1.260

Comment :
CHAN 0025 CDMA MODE
DUAL BAND PHONE
PCTEST ENGINEERING LABORATORY

Robot : PCTEST

Probe Offset = 0.25 cm
Sensor Factor = 0.0108
Conversion Factor = 1.200

PCTEST Amplifier Channel Settings : 0.250 0.233 0.225

Diode Coefficients:

Channel 1	An=-52.065	Bn=113.200	Cn=39.840	Dn=0.001	Mn=0.024	Yn=0.000
Channel 2	An=0.000	Bn=0.000	Cn=0.000	Dn=0.000	Mn=0.000	Yn=0.000
Channel 3	An=0.000	Bn=0.000	Cn=0.000	Dn=0.000	Mn=0.000	Yn=0.000

Max Location : X = 2.750, Y = 1.000, Z = 0.000 (cm) Value = 5.456

Measured Values (volts) =

5.448E-003	3.959E-003	1.994E-003	9.609E-004	3.567E-004	4.295E-004
3.007E-004	2.424E-004	2.404E-004	1.011E-004	1.758E-004	3.253E-004
1.032E-004					

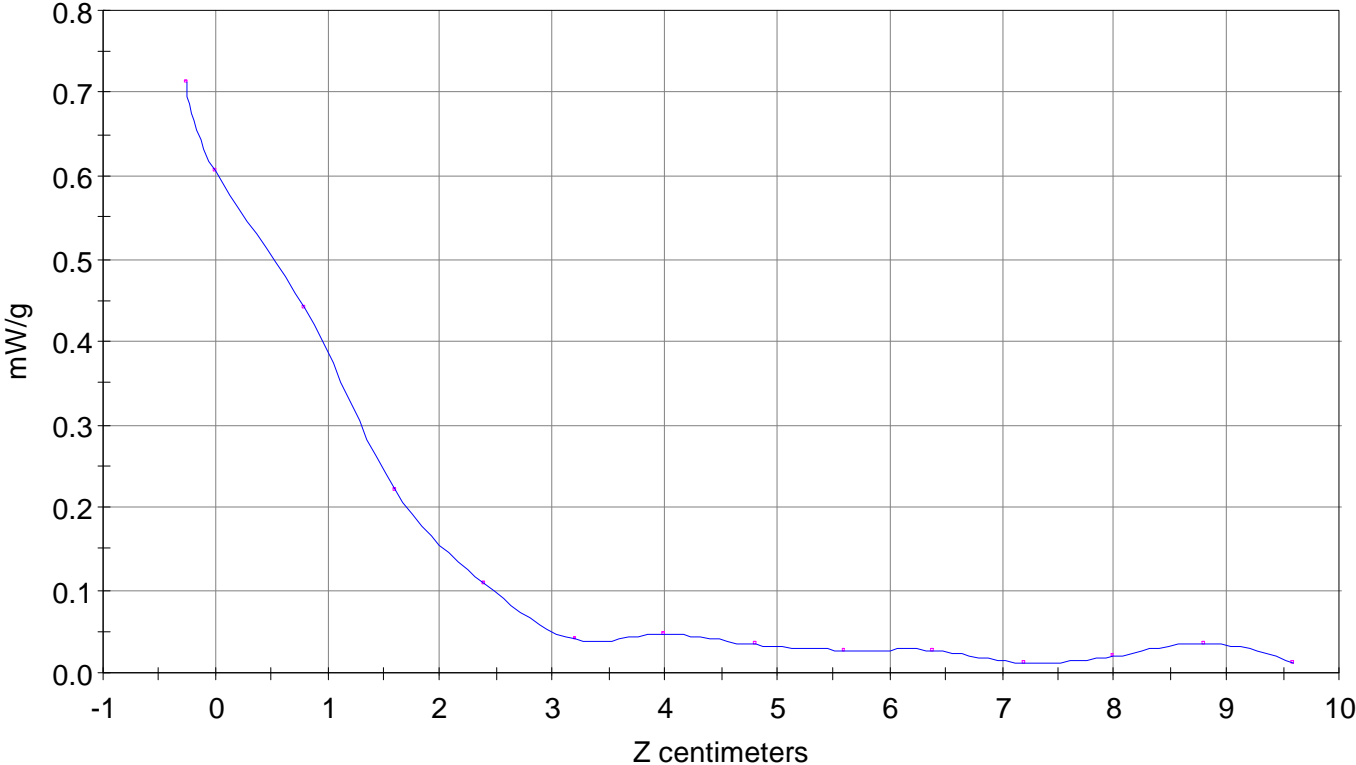
Calc. Voltage @ Surface (Vs) = 0.0064

Voltage @ 1.00 cm (Vt) = 0.0041

Ave. Voltage (Vs+Vt)/2 = 0.0052

Ave. SAR over 1 g (mW/g) = 0.5811

SAR Scan
File : 98071516_ZOOM
Start : 15-Jul-98 05:11:01 pm End : 15-Jul-98 05:20:51 pm
SANYO/SCP-3000/0001;1851.25MHz;W;Helical/Out;
Head/Left Ear;ZOOM/SAR;PCTEST/E Field/0 DegreesBrain/41.300/1.260



File : c:/idx3/SYSTEM/SARMEAS3/data/Normal/98071519_ZOOM.VLT
Start : 15-Jul-98 05:48:50 pm End : 15-Jul-98 05:58:56 pm

Radio Type : SANYO
Model Number : SCP-3000
Serial Number : 0001
Frequency : 1908.75 MHz
Peak Trans. Pwr : 0.200 W
Start Trans. Pwr : 0.200 W
Antenna Type : Helical
Antenna Posn. : Out
Phantom Type : Head
Phantom Posn. : Left Ear
Scan Type : ZOOM/SAR
Probe Name : PCTEST
Field Type : E Field
Orientation : 0 Degrees

Mixture Type = Brain
Mixture Dielectric Constant = 41.300
Mixture Conductivity = 1.260

Comment :
CHAN 1175 CDMA MODE
DUAL BAND PHONE
PCTEST ENGINEERING LABORATORY

Robot : PCTEST

Probe Offset = 0.25 cm
Sensor Factor = 0.0108
Conversion Factor = 1.200

PCTEST Amplifier Channel Settings : 0.250 0.233 0.225

Diode Coefficients:

Channel 1	An=-52.065	Bn=113.200	Cn=39.840	Dn=0.001	Mn=0.024	Yn=0.000
Channel 2	An=0.000	Bn=0.000	Cn=0.000	Dn=0.000	Mn=0.000	Yn=0.000
Channel 3	An=0.000	Bn=0.000	Cn=0.000	Dn=0.000	Mn=0.000	Yn=0.000

Max Location : X = 2.250, Y = 0.750, Z = 0.000 (cm) Value = 4.879

Measured Values (volts) =

4.722E-003	3.486E-003	1.609E-003	6.572E-004	5.095E-004	4.317E-004
2.702E-004	1.879E-004	1.771E-004	2.400E-005	6.705E-005	2.338E-004
3.440E-004					

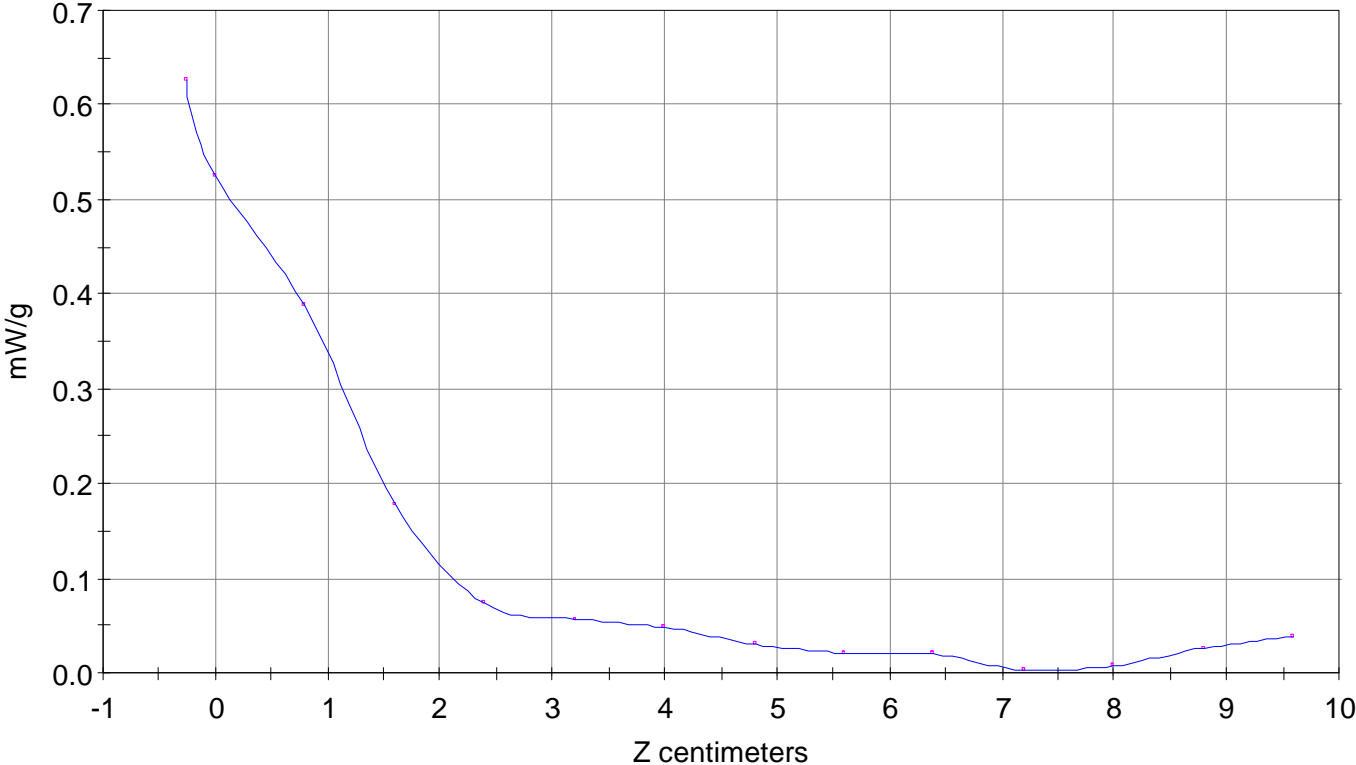
Calc. Voltage @ Surface (Vs) = 0.0056

Voltage @ 1.00 cm (Vt) = 0.0036

Ave. Voltage (Vs+Vt)/2 = 0.0046

Ave. SAR over 1 g (mW/g) = 0.5111

SAR Scan
File : 98071519_ZOOM
Start : 15-Jul-98 05:48:50 pm End : 15-Jul-98 05:58:56 pm
SANYO/SCP-3000/0001;1908.75MHz;W;Helical/Out;
Head/Left Ear;ZOOM/SAR;PCTEST/E Field/0 DegreesBrain/41.300/1.260



File : c:/idx3/SYSTEM/SARMEAS3/data/Normal/98071520_ZOOM.VLT
Start : 15-Jul-98 05:59:54 pm End : 15-Jul-98 06:09:59 pm

Radio Type : SANYO
Model Number : SCP-3000
Serial Number : 0001
Frequency : 1880 MHz
Peak Trans. Pwr : 0.200 W
Start Trans. Pwr: 0.200 W
Antenna Type : Helical
Antenna Posn. : Out
Phantom Type : Head
Phantom Posn. : Left Ear
Scan Type : ZOOM/SAR
Probe Name : PCTEST
Field Type : E Field
Orientation : 0 Degrees

Mixture Type = Brain
Mixture Dielectric Constant = 41.300
Mixture Conductivity = 1.260

Comment :
CHAN 0600 CDMA MODE
DUAL BAND PHONE
PCTEST ENGINEERING LABORATORY

Robot : PCTEST

Probe Offset = 0.25 cm
Sensor Factor = 0.0108
Conversion Factor = 1.200

PCTEST Amplifier Channel Settings : 0.250 0.233 0.225

Diode Coefficients:

Channel 1	An=-52.065	Bn=113.200	Cn=39.840	Dn=0.001	Mn=0.024	Yn=0.000
Channel 2	An=0.000	Bn=0.000	Cn=0.000	Dn=0.000	Mn=0.000	Yn=0.000
Channel 3	An=0.000	Bn=0.000	Cn=0.000	Dn=0.000	Mn=0.000	Yn=0.000

Max Location : X = 2.500, Y = 0.000, Z = 0.000 (cm) Value = 5.052

Measured Values (volts) =

4.549E-003	3.680E-003	1.630E-003	1.066E-003	5.912E-004	4.775E-004
5.610E-005	3.976E-005	1.225E-004	3.435E-004	1.889E-004	5.231E-004
4.260E-004					

Calc. Voltage @ Surface (Vs) = 0.0054

Voltage @ 1.00 cm (Vt) = 0.0037

Ave. Voltage (Vs+Vt)/2 = 0.0046

Ave. SAR over 1 g (mW/g) = 0.5083

SAR Scan
File : 98071520_ZOOM
Start : 15-Jul-98 05:59:54 pm End : 15-Jul-98 06:09:59 pm
SANYO/SCP-3000/0001;1880MHz;W;Helical/Out;
Head/Left Ear;ZOOM/SAR;PCTEST/E Field/0 DegreesBrain/41.300/1.260

