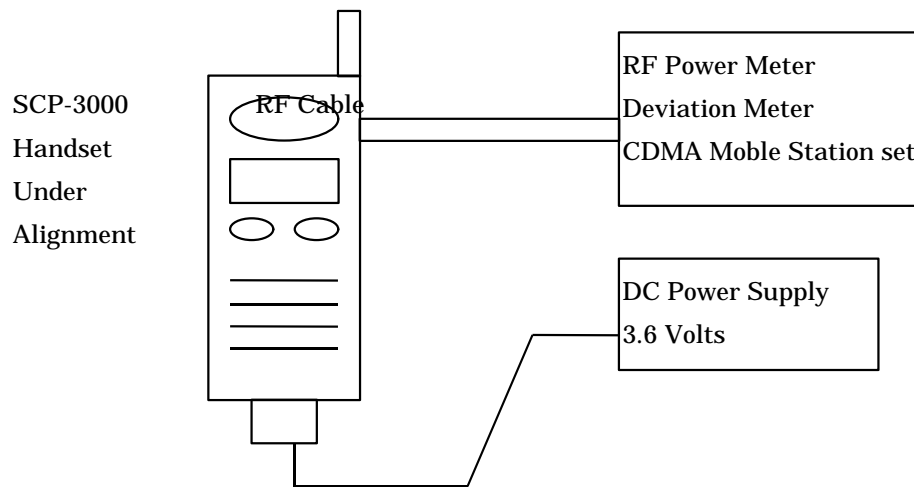


TUNE UP PROCEDURE

1 SET-UP FOR TUNE-UP OF TRANSMITTER

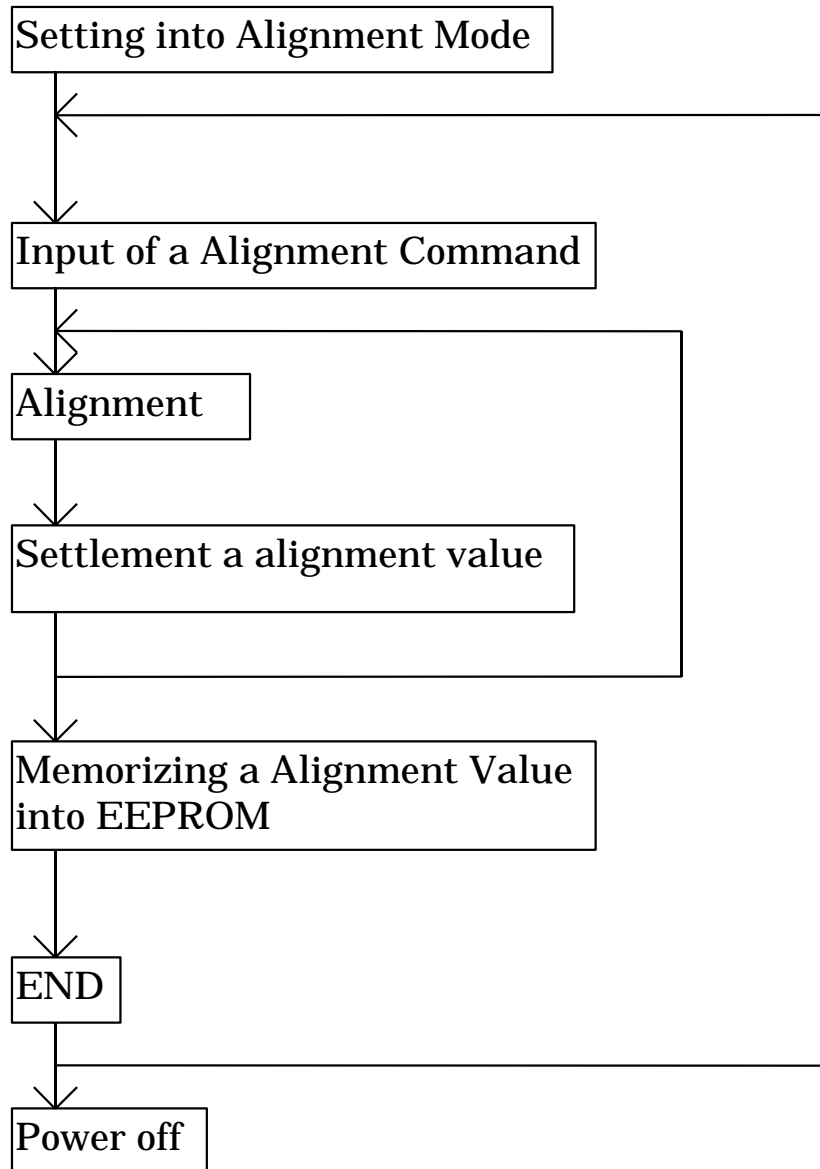


CDMA Mobile Station set Set-up

Frequency = any CHANNEL at CDMA RX

Output Level = 21dBm~ 106dBm (CDMA RX-RASRAM-TABLE)

2 ALIGNMENT PROCEDURE



3 KEY OPERATION FROM HANDSET

(1) AMPS ALIGNMENT (AMPS POWER, Freq Sense Gain)

a Setting into Alignment Mode

Push keys at sametime

b Input of a Alignment Command

Push keys

c Alignment

Increasing alignment value

Push a key

Decreasing alignment value

Push a key

d Settlement a alignment value

Push a key

e Continue c,d (TOTAL 6 Times at AMPS POWER)

f Memorizing a alignment value into EEPROM

Push a key

g Cancel of the Alignment Command

Push a key

(2) CDMA TX ALIGNMENT (CHANNEL TABLE LIMIT)

a Setting into Alignment Mode

Push keys at sametime

b Input of a Alignment Command

Push keys

c Alignment

Increasing alignment value

Push a key

Decreasing alignment value

Push a key

d Settlement a alignment value

Push a key

e Continue c,d (TOTAL 16 TIMES at RASRAM TABLE)

(TOTAL 17 TIMES at TX LIMIT)

f Memorizing a alignment value into EEPROM

Push a key

g Cancel of the Alignment Command

Push a key

(3) CDMA RX ALIGNMENT (RX-TABLE)

a Setting into Normal Mode

Push a key

b Input of a Alignment Command

Push keys

c Alignment

Select CHANNEL

Increasing CHANNEL

Push a key

Decreasing CHANNEL

Push a key

Set select CHANNEL

Push a key

Receive any Input Level from Signal Generator

d Settlement a alignment value

Push a key

e Continue c,d (TOTAL 17 Times)

f Memorizing a alignment value into EEPROM

Push a key

g Cancel of the Alignment Command

Push a key

4 Alignment Value

Alignment Command	Measurement (CHANNEL)	Frequency (MHz)	Alignment Range
3-2-3-2	AMPS Power	836.49	
	Level 0	(383)	+25.8 ±1.0dBm
	Level 3		+23.8 ±1.0dBm
	Level 4		+19.8 ±1.0dBm
	Level 5		+15.8 ±1.0dBm
	Level 6		+11.8 ±1.0dBm
	Level 7		+7.8 ±1.0dBm
3-2-1-4	AMPS Freq Sense Gain	836.49	+8.0 ±0.1kHzdev
	(383)	(WIDE BAND DATA)	

Alignment Command	Measurement (CHANNEL)	Frequency (MHz)	Alignment Range
----------------------	--------------------------	-----------------	-----------------

5-1-1	CDMA CHANNEL SELECT(TX)		any CHANNEL
-------	----------------------------	--	-------------

5-1-2	CDMA TX- RASRAM TABLE		any channel
	1 TIME		+24.6 ±1.0dBm
	2 TIME		+19.3 ±1.0dBm
	3 TIME		+14.0 ±1.0dBm
	4 TIME		+ 8.7 ±1.0dBm
	5 TIME		+ 3.4 ±1.0dBm
	6 TIME		1.9 ±1.0dBm
	7 TIME		7.2 ±1.0dBm
	8 TIME		12.5 ±1.0dBm
	9 TIME		17.9 ±1.0dBm
	10 TIME		23.2 ±1.0dBm
	11 TIME		28.5 ±1.0dBm
	12 TIME		33.8 ±1.0dBm
	13 TIME		39.1 ±1.0dBm
	14 TIME		44.4 ±1.0dBm
	15 TIME		49.7 ±1.0dBm
	16 TIME		55.0 ±1.0dBm

Alignment Command	Measurement (CHANNEL)	Frequency (MHz)	Alignment Range
----------------------	--------------------------	-----------------	-----------------

5-1-5	CDMA TX-	any channel	
	LIMIT		
	1 TIME		+ 8.75±0.5dBm
	2 TIME		+10.1 ±0.5dBm
	3 TIME		+11.4 ±0.5dBm
	4 TIME		+12.7 ±0.5dBm
	5 TIME		+14.1 ±0.5dBm
	6 TIME		+15.4 ±0.5dBm
	7 TIME		+16.7 ±0.5dBm
	8 TIME		+18.1 ±0.5dBm
	9 TIME		+19.4 ±0.5dBm
	10 TIME		+20.7 ±0.5dBm
	11 TIME		+22.1 ±0.5dBm
	12 TIME		+23.4 ±0.5dBm
	13 TIME		+24.7 ±0.5dBm
	14 TIME		+26.0 ±0.5dBm
	15 TIME		+27.4 ±0.5dBm
	16 TIME		+28.7 ±0.5dBm
	17 TIME		+30.0 ±0.5dBm

Alignment Command	Measurement (CHANNEL)	Frequency(MHz)	Alignment Range
MENUE-7-0 0000-7 (NORMAL MODE)	CDMA RX- RASRAM TABLE 1 TIME	any channel	RECEIVE LEVEL 106.0 dBm
	2 TIME		100.6 dBm
	3 TIME		95.3 dBm
	4 TIME		90.0 dBm
	5 TIME		84.7 dBm
	6 TIME		79.4 dBm
	7 TIME		74.1 dBm
	8 TIME		68.8 dBm
	9 TIME		63.5 dBm
	10 TIME		58.1 dBm
	11 TIME		52.8 dBm
	12 TIME		47.5 dBm
	13 TIME		42.2 dBm
	14 TIME		36.9 dBm
	15 TIME		31.6 dBm
	16 TIME		26.3 dBm
	17 TIME		21.0 dBm