

3. Tap “Music Files” or “Photo Files” button to select file type you want to transfer to NVM-4070 from mobile phone.
4. Tap the file icon you want to transfer (allowed to select multiple files).
5. Tap “Import” button and transfer starts.

NOTE: Music files are transferred to “Music” folder of Internal Memory of NVM-4070.
Photo files are transferred to “Photo” folder of Internal Memory.

4.4.2 Import Phonebook

NOTE: Not all mobile phones support “Import Phonebook”.

1. Tap “Import Phonebook” button.
2. Phone book on mobile phone is imported to NVM-4070.
3. You can see imported Contacts in “Contacts” screen.

NOTE: Phonebook may be imported separating into multiple entries depending on mobile phones.

4.4.3 Export Contacts to SD

1. Insert SD card to NVM-4070.
2. Tap “Export Contacts to SD” button.
3. Tap the Entry you want to Export (allowed to select multiple files).
(You can select all Entry using the “Select All”)



4. Tap “Export” button and the Entry you have selected starts to be exported to SD card.

NOTE: The selected Entry is output to the “Contacts” folder of SD card in vCard format.
vCard file can be read by Microsoft Outlook etc. with PC.

4.4.4 Import Contacts from SD

1. Insert SD card including vCard file to NVM-4070.
2. Tap “Import Contacts from SD” button.
3. vCard files existing in the “Contacts” folder of SD card appear.



4. Tap vCard file you want to Import (allowed to select multiple files).
5. Tap “Import” button and the vCard file you have selected starts to be Imported.
6. You can see imported Contacts in “Contacts” screen.

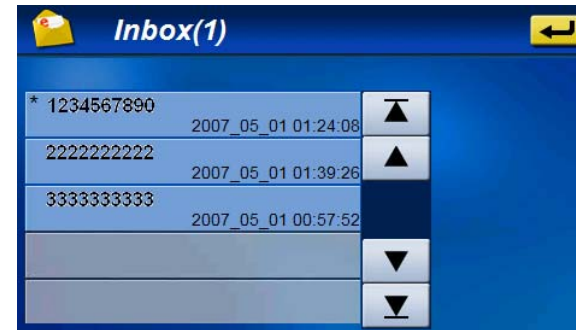
4.5 SMS (Short Message Service)

NOTE: Not all mobile phones support “SMS”. Depending on mobile phones, only sending or receiving function is supported.

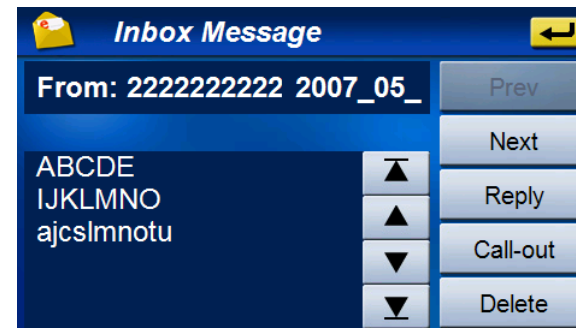


4.5.1 Inbox

You can receive and read the message of the connected phone via Bluetooth. The maximum number of the saved message in Inbox is 100. Unread messages are displayed with '*', and the unread number is displayed on the title bar.



Select one of the list, the message screen opens. You can read the whole of the message.



Prev: Open the previous message
 Next: Open the next message
 Reply: Start to make the message to the sender
 Call-out: Start to make a call to the sender
 Delete: Delete this message

NOTE: On the “Settings”, you can do the setting of “SMS automatic receiving” and “SMS automatic display”.

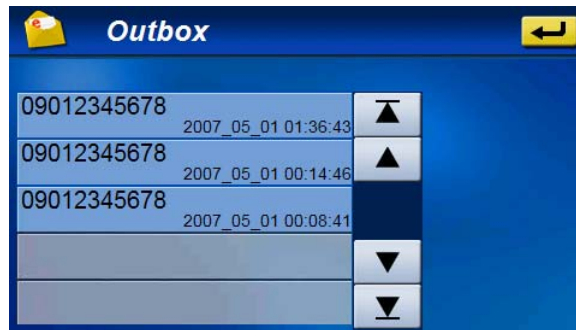


4.5.2 Outbox

The sent message is saved to the Outbox.

The maximum number of the saved message in Outbox is 100.

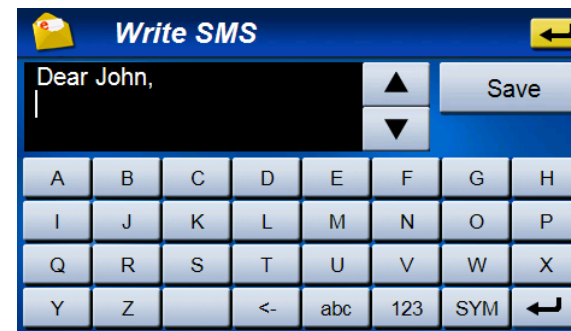
Select one of the list, the message screen opens. You can read the whole of the message.



4.5.3 Write SMS



- Input the destination number with A or B.
 - Input the number directly (Tap the destination number field)
 - Select the number from Contacts entries (Tap the “Search” button)
- Tap the message field, you can input the message. After finishing, tap the “Save” button.



- After making a message finishes, tap the “Save” button.
- Tap the “Send” button when connecting with the mobile phone, the message is sent.
- Tap the “Save” button, the message is saved to “Draft”.



4.5.4 Draft

The draft messages are saved to “Draft”.

The maximum number of the saved message in Draft is 100.

Select one of the messages and tap “Edit”, the “Write SMS” screen opens.

You can edit and send the selected message.





Chapter 5 Multimedia Players

NVM-4070 provides you with a full multi-media entertainment system. Enjoy your favorite music, photo and movie on the road.

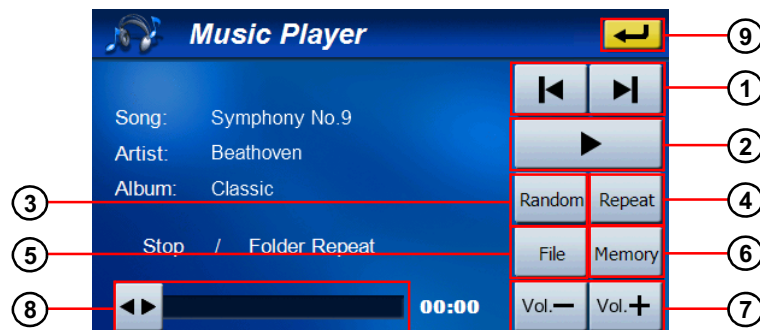
5.1 Music Player

5.1.1 Features

- Support for MP3, WMA, and WAV files
- Music files on both of NVM-4070's internal memory and SD card can be played back. (You can copy music files from PC to NVM-4070 using USB cable.)
- You can use navigation system while listening to music. (Background music mode)
- Folder repeat / Song repeat / Random play modes.

5.1.2 Using the Music Player

1. Tap "Music" button on Main Menu.
2. The Music Player screen below controls playback.



No.	Function	Description
1	Skip backwards/ forwards	Advances one song backward and forward
2	Play / Pause	Plays or Pauses the music
3	Random Play	Sets play-mode to random order
4	Repeat	Sets repeat mode (Song Repeat / Folder Repeat)
5	File	Changes to File Explorer screen to select file
6	Memory/SD card	Selects Data Storage (SD card / Internal Memory)
7	Volume Control	Turns volume up/down
8	Slide-bar	Changes playing location
9	Return	Stops the music and returns to Main Menu

3. File Explorer screen



Tap the music file icon you want to play, then selected file is started to playback.

5.1.3 Background Music Mode

Starting Background Playback

1. Start to play music in Music Player
2. Push shortly the “MENU” button.
3. “Main Menu” appears (music keeps playing).
4. You can enter to each screen of “Navigation”, “Communication”, “Photo” and “System”, but not “Video Player”.

Stopping Background Playback

1. Enter to Music Player again.
2. Tap and exit to “Main Menu”.
3. Music stops.

5.2 Photo Viewer

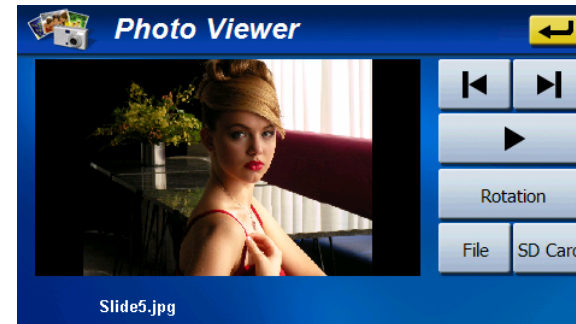
5.2.1 Features

- Support for JPEG file.
- Photo files on both of NVM-4070’s internal memory and SD card can be displayed. (You can copy photo files from PC to NVM-4070 using USB cable.)
- Slide-show mode and Rotation function

5.2.2 Using the Photo Viewer

1. Tap “Photo” button on Main Menu.
2. Tap the “Memory” / “SD Card” button to select the media in which exist image file you want to display.
3. Tap the “File” button, then “File Explorer” screen appears.
4. Tap the photo file icon (Thumbnail) you want to display, then selected file is displayed.

normal screen mode







File Explorer screen



The “Rotation” button displays an image rotating 90 degrees clockwise.
Tap , button, then previous / next image in current folder is displayed.



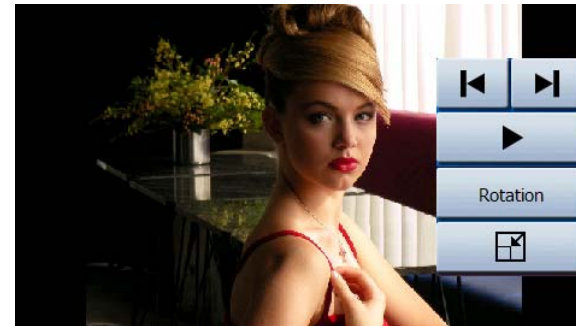
5.2.3 Full-screen Display / Slide-show

1. Tap the screen or  button. then the screen changes to full screen and Slide-Show mode (displays automatically next file in a folder in a specific time) starts.
2. The button which had been appear once is automatically disappear after 5 seconds. By tapping screen at full-screen mode, buttons appear / disappear.
3. By tapping  button, Slide-Show mode is canceled.
4. By tapping  button again, Slide-Show mode is restarted.
5. By tapping  button, the screen returns to normal screen mode.

Full screen mode without buttons



Full screen mode with buttons



5.3 Video Player

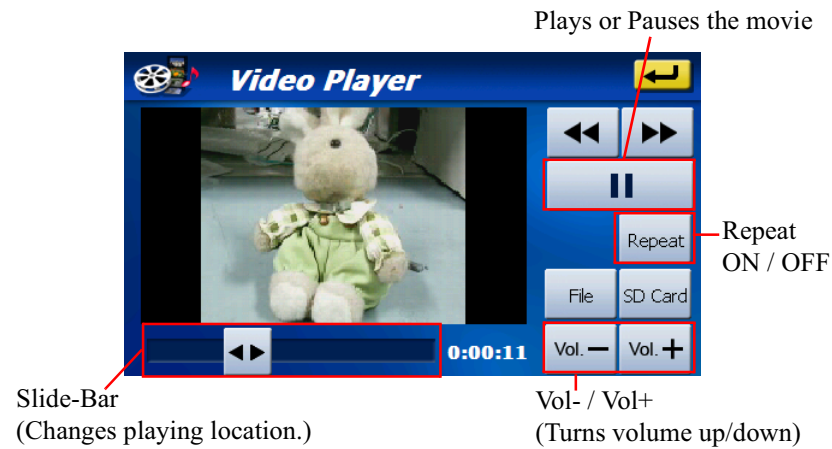
5.3.1 Features

- Support for MPEG4 files
- Movie files on both of NVM-4070's internal memory and SD card can be played back. (You can copy movie files from PC to NVM-4070 using USB cable.)
- Fast Forward / Backward Play mode. (2x, 4x, 8x, 16x, 32x)

5.3.2 Using the Video Player

1. Tap "Video" button on Main Menu.
2. Tap the "Memory" / "SD Card" button to select the media in which exist movie file you want to display.
3. Tap the "File" button, then "File Explorer" screen appears.
4. Tap the movie file icon (Thumbnail) you want to playback, then selected file is started to playback.

normal screen mode



File Explorer screen



5.3.3 Full Screen Display

1. Tap the screen, then the screen changes to full screen mode.
2. By tapping screen at full-screen mode, buttons appear / disappear.
3. By tapping button, the screen returns to normal screen mode.

Full screen mode without buttons



Full screen mode with buttons





5.3.4 Fast Forward / Backward Play Mode

Tap button, then Fast Forward Play (2x -> 4x -> 8x -> 16x -> 32x) is started.

Tap button, then Fast Backward Play (2x -> 4x -> 8x -> 16x -> 32x) is started.

5.4 USB Mass Storage

You can use NVM-4070 as the external mass storage disk of your PC.

1. Connect NVM-4070 to PC using USB cable.
2. NVM-4070 becomes the external mass storage disk of your PC.
3. You can see files on NVM-4070.
You can copy multimedia files (mp3, wma, jpeg and mp4) from PC to NVM-4070.

NOTE: Operating system of your PC should be Windows XP or later.



Chapter 6 Accessory Disc

6.1 Companion CD

This CD includes User's manual, ActiveSync setup file, and Adobe Reader setup file.

Using the Companion CD

1. Insert the Companion CD to the drive of your computer.
2. Main Menu opens. (If the screen is not displayed, run "Launch.exe" from Explorer)
3. Select "English" as the language of the Companion CD.



4. After selecting the language, Sub Menu opens.



(a) User's Manual

Select "NVM-4070 User's Manual", Explorer opens. Select the file you want to see.

NOTE: You must install Adobe Reader for seeing the document.

(b) Adobe Reader

Select "Adobe Reader", the installation of Adobe Reader starts automatically.

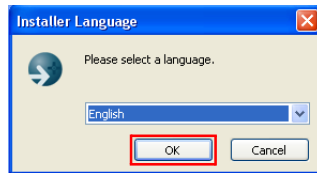


6.2 DVD Map Software (update DVD)

This DVD includes Navigation Software and Maps (USA/Canada/Alaska/Hawaii/Puerto Rico).

Using the update DVD

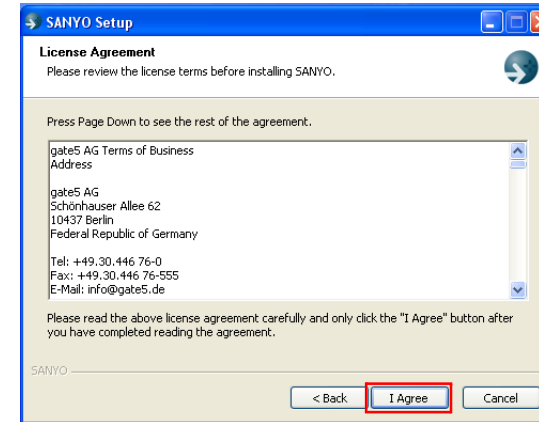
1. Connect your NVM-4070 to your computer with USB cable. Your NVM-4070 is recognized as the removable disk.
2. Insert the update DVD to the drive of your computer. Run Installer.exe (Double-Click on PC)
3. Select English as the installation language.



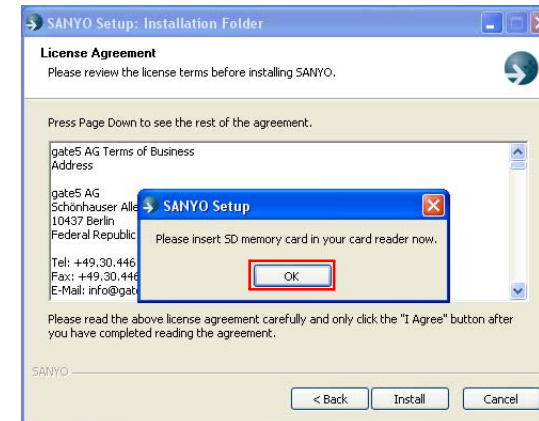
4. Installer launches. Click “Next”.



5. Please read the license agreement carefully and only click the “I Agree” button after you have completed reading the agreement.

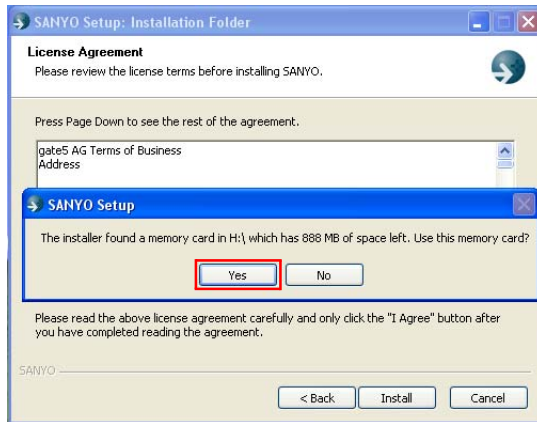


6. Press “OK”.

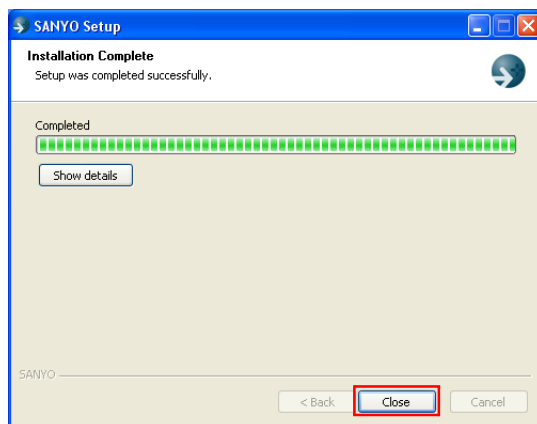




- When the drive name shows your NVM-4070, select Yes.



- Installation starts. After the installation completes, press “Close”.



- Disconnect your NVM-4070 from your computer.
- Reset your NVM-4070.



Chapter 7 Troubleshooting

7.1 Your device does not turn on.

- Check that the battery switch is ON.
- Check that your device is connected to AC adaptor or car adaptor.
- Check that the battery power of your device is enough.

7.2 The internal battery cannot be charged.

- Check that the battery switch is ON.
- Check that your device is connected to AC adaptor or car adaptor.

7.3 System stops responding; is “frozen” or “locked up.”

- To reset the NVM-4070, take a sharp object like a pen and depress the reset button on the bottom of the device. This is called a “soft reset.”

7.4 If your device still does not respond after performing “soft reset”, try a “hard reset.”

- To do a “hard reset,” Disconnect all cables, including the AC adaptor, from your device. Slide the battery ON/OFF switch on the bottom of the device to the OFF (left) position. Then slide it to the ON position again.

7.5 Users can also perform a “system reset.”

- To do a “system reset” in the Main Menu, tap the System, then tap the System Info. This will allow you to do a factory reset (restore to default settings), reset the GPS and recalibrate the touchscreen interface.

7.6 Screen is not displayed normally.

- Make sure that brightness setting is appropriate.

- There is the case that LCD does not work normally at a high temperature and low temperature.
Make sure that the temperature is in the normal operating range.

7.7 The touch screen does not respond well.

- Calibrate the screen of your device.

7.8 Connection Problems with PC.

- Make sure that the cable is securely plugged into the USB port on your computer and on the device.
Connect the USB cable directly to your computer - do not run the cable through a USB hub.
- Reset your device before connecting the cable. Always disconnect your device before you restart your computer.

7.9 No GPS connection

- Make sure that your device has a clear view of the sky.
- Note that the GPS reception can be affected by:
 - Bad weather
 - Dense overhead obstacles (e.g. trees and tall buildings)
 - Other wireless devices in the car
 - GPS signal may not be received if a window is coated with film.

7.10 No sound coming from the device.

- Make sure that volume setting is not too low.
- The built-in speaker turns off when the headphones jack is being used.
- The built-in speaker also turns off when the FM transmitter is ON.



7.11 Getting a GPS fix takes longer time than normal.

- If the previous GPS fix position was more than 500 km or 12 hours apart from your current position and time, it will take significantly longer than the standard TTFF time to get a GPS fix. This is due to the nature of the GPS algorithm and rotational velocity between the satellites and planet Earth, and deemed normal.
- Perform a GPS reset in the main/system/system info menu to get a faster GPS fix.

7.12 Factory reset does not mean a GPS reset.

- The Factory Reset function only resets the OS settings to their default factory values; it will not reset the GPS settings.

7.13 Bluetooth functions do not work.

- Make sure that Bluetooth setting of your phone is ON and Visible.
 - If the connected mobile phone has the Bluetooth auto-accept function, set this function to “ON”.
(For more detailed information, see your phone’s manual.)
- Make sure that your phone is located within 30 feet (10meters) from your device.
 - The following Bluetooth functions are usable or unusable depending on a model of mobile phone.
 - “File Transfer”
 - “Import Phonebook”
 - The SMS sending and receiving functions are usable or unusable depending on a model of mobile phone.
 - For the “Import Phonebook”, depending on a model of mobile phone, one contact on your phone is divided into multiple entries on your device.

7.14 Unavailable functions

- When “Navigation” is running as the background process (When the “MENU” button is pushed briefly and exit from “Navigation”), it is impossible to enter to “Photo”, “Video” and “Language” menus.
- When “Music” is running as the background process (When the “MENU” button is pushed briefly and exit from “Music”), it is impossible to enter to “Video” menu.



Index

A

Adaptor 5, 11, 12, 13, 23
Adobe Reader 40

B

Battery 5, 10, 19, 21, 23
Bluetooth 10, 12, 21, 25, 26, 32
Brightness 22

C

Calibration 19, 23
CD 12, 40

D

Dashboard 12, 15, 16, 17
Date 20
DVD 12, 41

E

External Features 12

F

Factory Reset 24, 43
Features 10, 35, 36, 37

G

GPS 10, 23, 43

H

hard reset 43
Headphones 10, 13

L

language 20, 40, 41

M

Map 12, 41
MMC 10, 11, 13
Mounting 12, 14, 15, 16, 17

N

Navigation Software 41

P

Packing list 12
Power 12, 13, 22, 23
power-save 22

S

SD 10, 11, 13, 31, 35, 36, 37
soft reset 13, 43
Specifications 10
System Information 23
System settings 21
system settings 19

T

Time 10, 20, 21
Time Zone 21

U

USB 10, 11, 12, 13, 35, 36, 37, 39
User's Manual 40

V

Volume 22, 35, 38

W

Windshield 12, 14, 15, 16, 17