

# Peak SAR Location

---

## Head SAR



File : c:/idx3/SYSTEM/SARMEAS3/data/Normal/01022608\_ZOOM.VLT  
Start : 26-Feb-101 11:51:25 am End : 26-Feb-101 12:02:46 pm

Radio Type : SANYO  
Model Number : C412SA  
Serial Number : 1  
Frequency : 824.70 MHz  
Peak Trans. Pwr : 0.225 W  
Start Trans. Pwr : 0.225 W  
Antenna Type : Helical  
Antenna Posn. : In  
Phantom Type : Head  
Phantom Posn. : Left Ear  
Scan Type : ZOOM/SAR  
Probe Name : PCTEST  
Field Type : E Field  
Orientation : 0 Degrees

Mixture Type = Brain  
Mixture Dielectric Constant = 41.500  
Mixture Conductivity = 0.900

Comment :  
SANYO CDMA-MODE PHONE  
CHAN 1013 Conducted 23.5 dBm  
SANYO CDMA-MODE PHONE

Robot : PCTEST

Probe Offset = 0.25 cm  
Sensor Factor = 0.0108  
Conversion Factor = 0.788

PCTEST Amplifier Channel Settings : 0.166 0.135 0.132

Max Location : X = 3.000, Y = -2.000, Z = 0.000 (cm) Value = 21.940

Measured Values (volts) =  
2.125E-002 1.820E-002 1.571E-002 1.368E-002 1.195E-002 1.061E-002  
9.528E-003 8.613E-003 7.506E-003 6.605E-003 5.770E-003 4.702E-003  
3.929E-003 3.272E-003 2.661E-003 2.264E-003 2.067E-003 1.869E-003  
1.807E-003 1.812E-003 1.804E-003

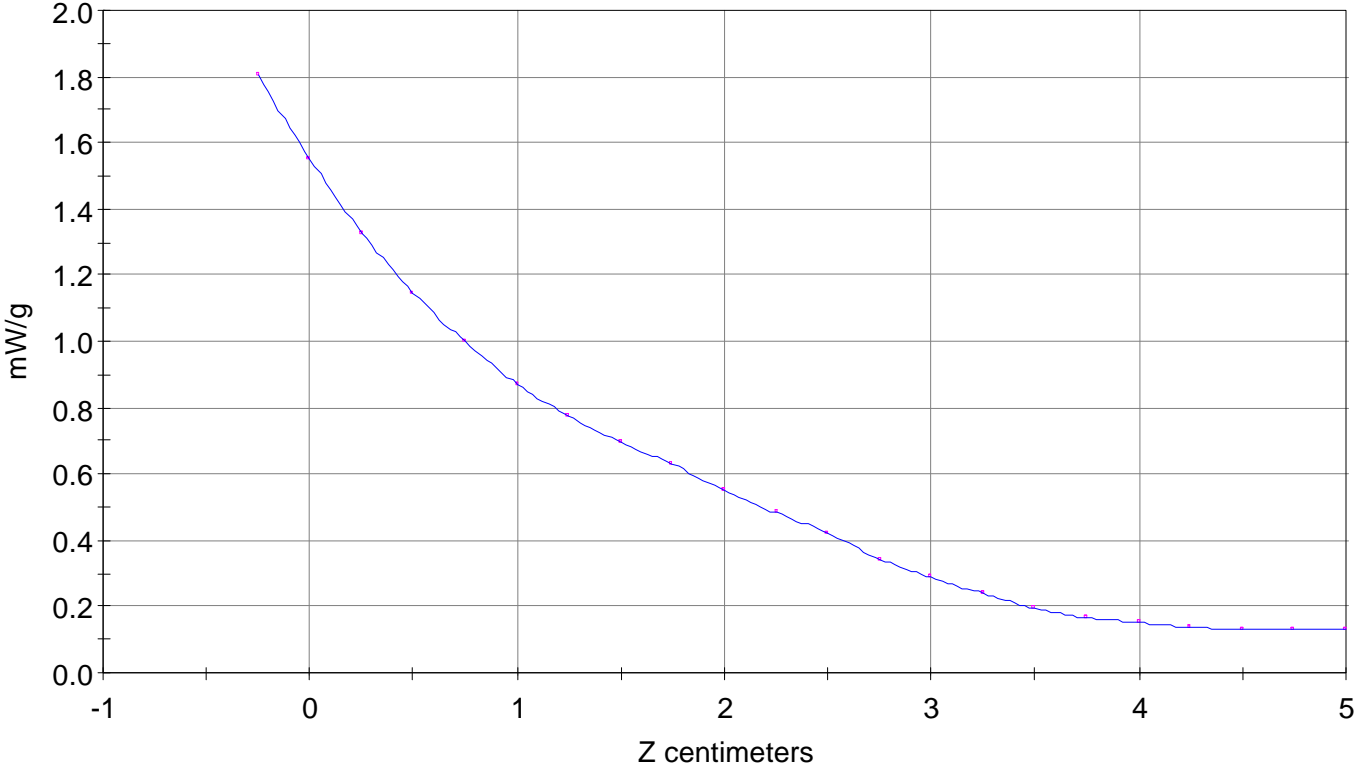
Calc. Voltage @ Surface (Vs) = 0.0247

Voltage @ 1.00 cm (Vt) = 0.0137

Ave. Voltage (Vs+Vt)/2 = 0.0192

Ave. SAR over 1 g (mW/g) = 1.4007

SAR Scan  
File : 01022608\_ZOOM  
Start : 26-Feb-101 11:51:25 am End : 26-Feb-101 12:02:46 pm  
SANYO/C412SA/1;824.70MHz;W;Helical/In;  
Head/Left Ear;ZOOM/SAR;PCTEST/E Field/0 DegreesBrain/41.500/0.900

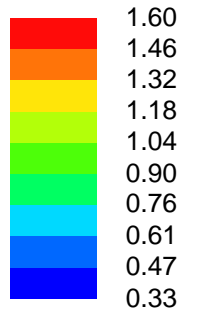
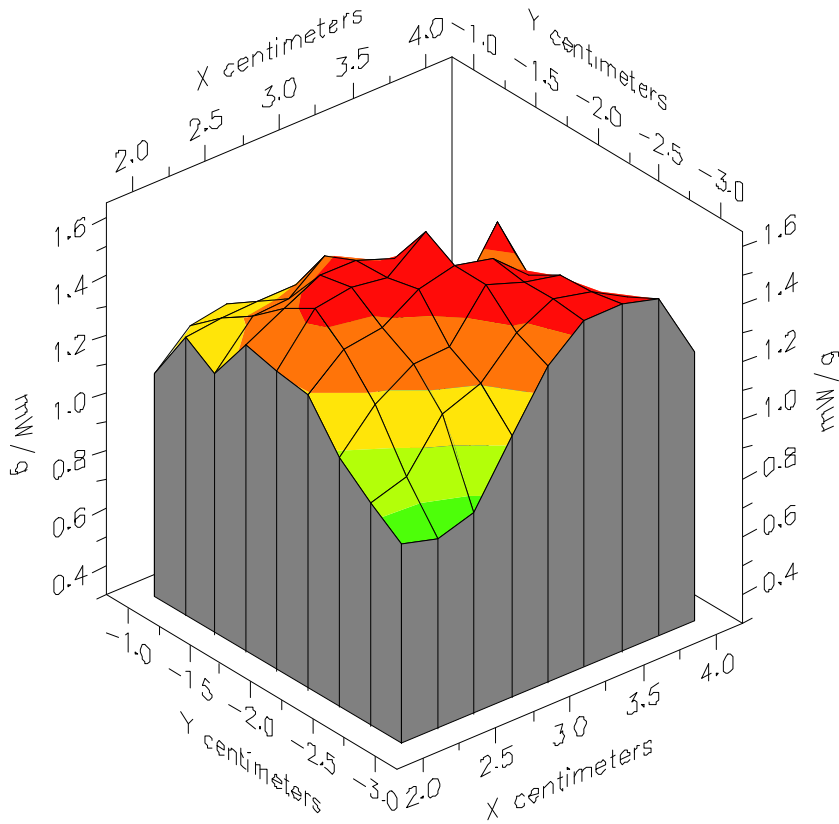


File : 01022608\_ZOOM

Start : 26-Feb-101 11:51:25 am End : 26-Feb-101 12:02:46 pm

SANYO/C412SA/1;824.70MHz;W;Helical/In;

Head/Left Ear;ZOOM/SAR;PCTEST/E Field/0 DegreesBrain/41.500/0.900

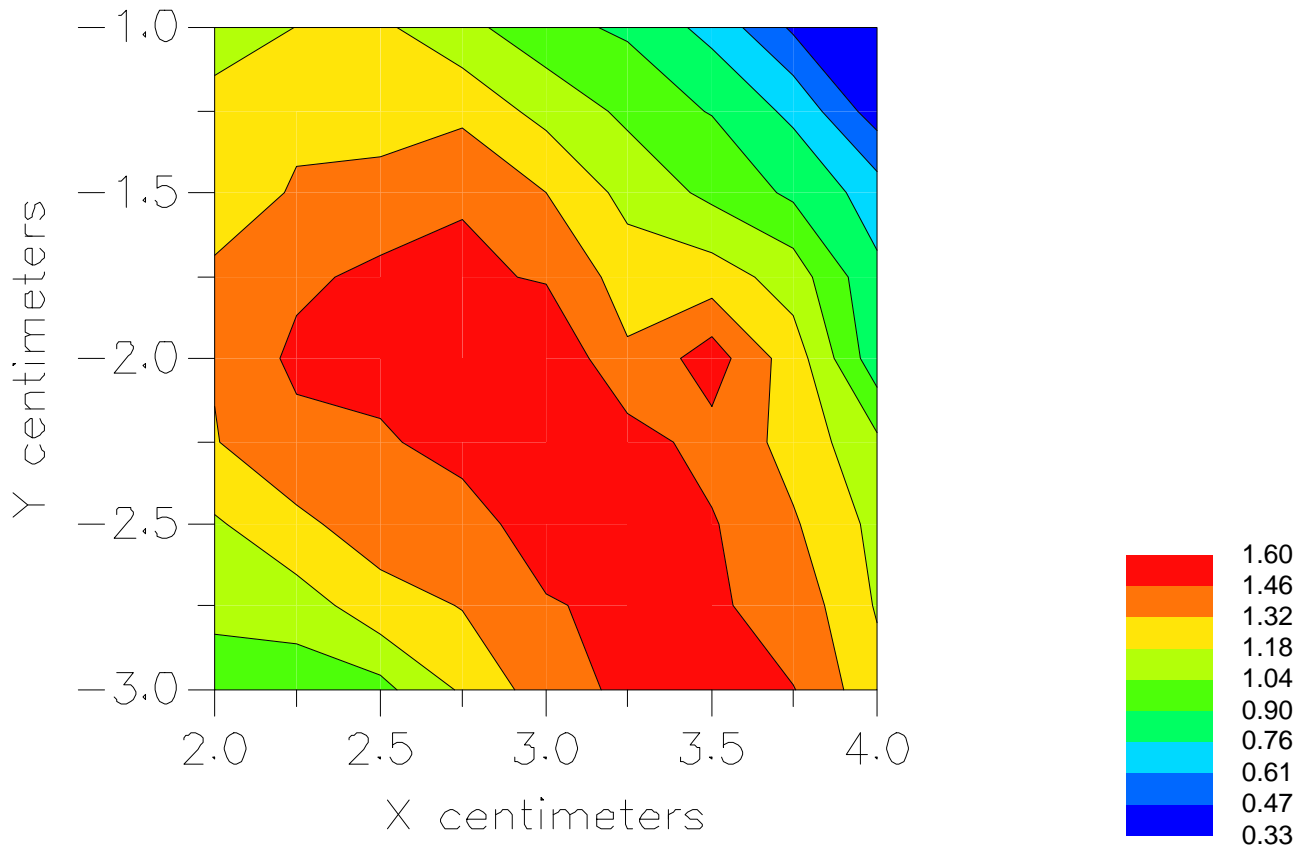


File : 01022608\_ZOOM

Start : 26-Feb-101 11:51:25 am End : 26-Feb-101 12:02:46 pm

SANYO/C412SA/1;824.70MHz;W;Helical/In;

Head/Left Ear;ZOOM/SAR;PCTEST/E Field/0 DegreesBrain/41.500/0.900



File : c:/idx3/SYSTEM/SARMEAS3/data/Normal/01022615\_ZOOM.VLT  
Start : 26-Feb-101 03:52:43 pm End : 26-Feb-101 04:03:56 pm

Radio Type : SANYO  
Model Number : C412SA  
Serial Number : 1  
Frequency : 824.70 MHz  
Peak Trans. Pwr : 0.225 W  
Start Trans. Pwr : 0.225 W  
Antenna Type : Helical  
Antenna Posn. : Out  
Phantom Type : Head  
Phantom Posn. : Left Ear  
Scan Type : ZOOM/SAR  
Probe Name : PCTEST  
Field Type : E Field  
Orientation : 0 Degrees

Mixture Type = Brain  
Mixture Dielectric Constant = 41.500  
Mixture Conductivity = 0.900

Comment :  
SANYO CDMA-MODE PHONE  
CHAN 1013 Conducted 23.5 dBm  
SANYO CDMA-MODE PHONE

Robot : PCTEST

Probe Offset = 0.25 cm  
Sensor Factor = 0.0108  
Conversion Factor = 0.788

PCTEST Amplifier Channel Settings : 0.166 0.135 0.132

Max Location : X = 3.250, Y = -2.250, Z = 0.000 (cm) Value = 17.303

Measured Values (volts) =  
1.626E-002 1.513E-002 1.284E-002 1.108E-002 9.476E-003 8.474E-003  
7.374E-003 6.480E-003 5.472E-003 4.638E-003 3.715E-003 3.035E-003  
2.488E-003 2.005E-003 1.625E-003 1.517E-003 1.458E-003 1.451E-003  
1.468E-003 1.432E-003 1.410E-003

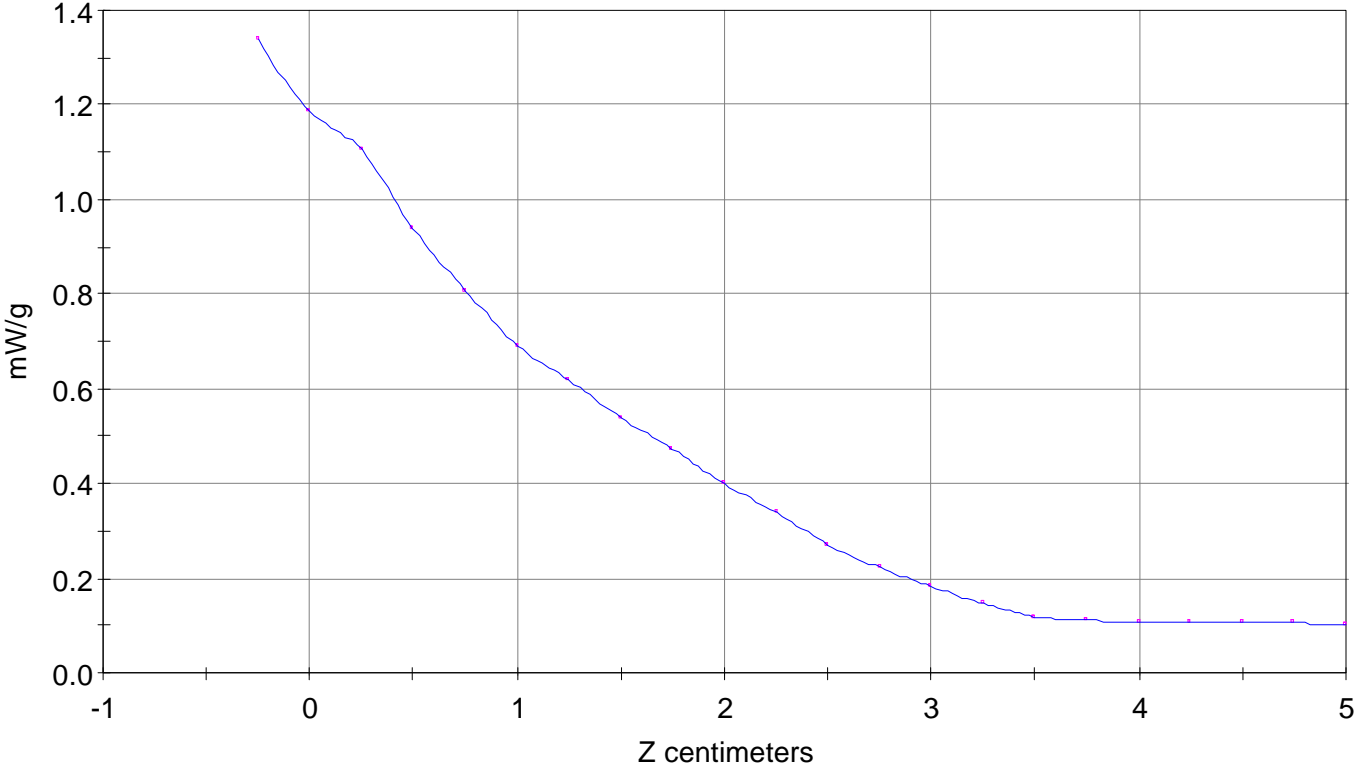
Calc. Voltage @ Surface (Vs) = 0.0183

Voltage @ 1.00 cm (Vt) = 0.0111

Ave. Voltage (Vs+Vt)/2 = 0.0147

Ave. SAR over 1 g (mW/g) = 1.0725

SAR Scan  
File : 01022615\_ZOOM  
Start : 26-Feb-101 03:52:43 pm End : 26-Feb-101 04:03:56 pm  
SANYO/C412SA/1;824.70MHz;W;Helical/Out;  
Head/Left Ear;ZOOM/SAR;PCTEST/E Field/0 DegreesBrain/41.500/0.900

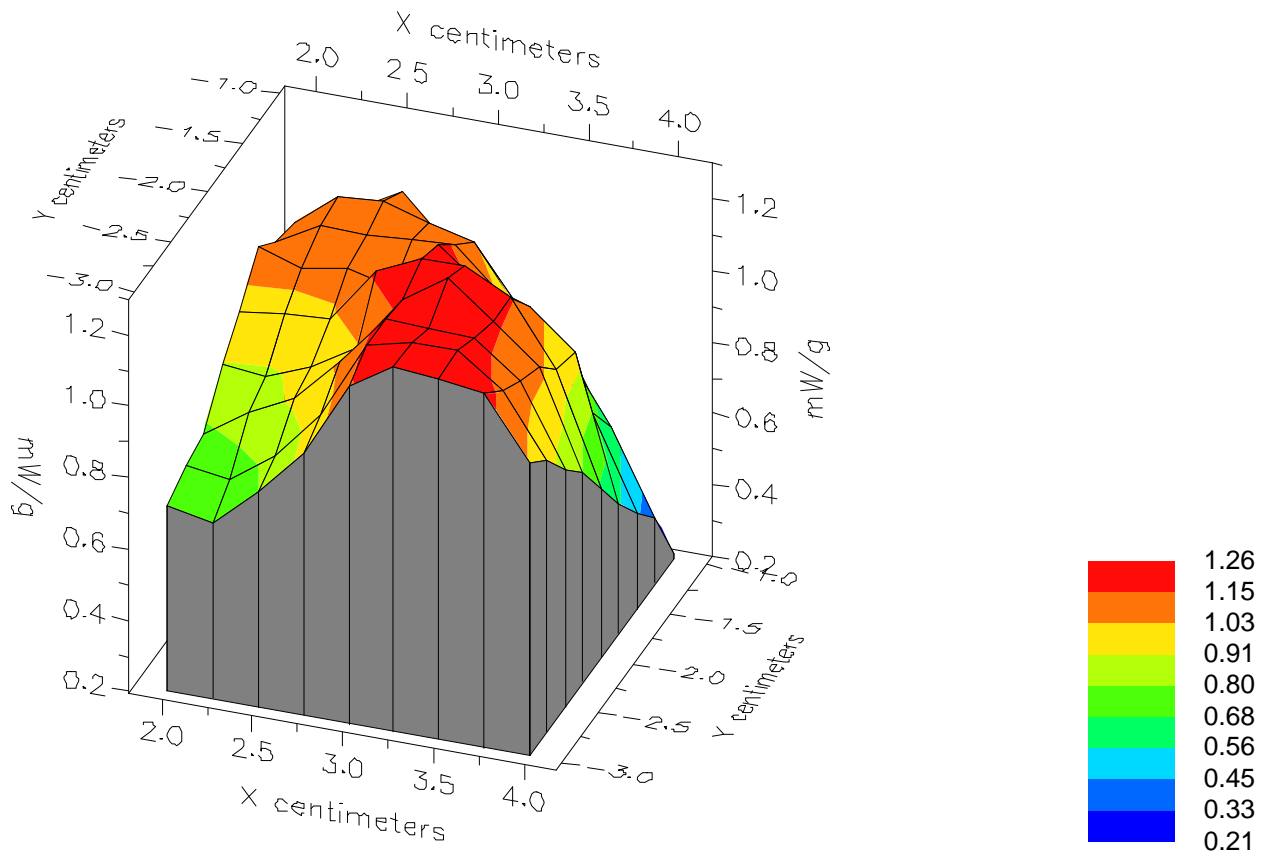


File : 01022615\_ZOOM

Start : 26-Feb-101 03:52:43 pm End : 26-Feb-101 04:03:56 pm

SANYO/C412SA/1;824.70MHz;W;Helical/Out;

Head/Left Ear;ZOOM/SAR;PCTEST/E Field/0 DegreesBrain/41.500/0.900



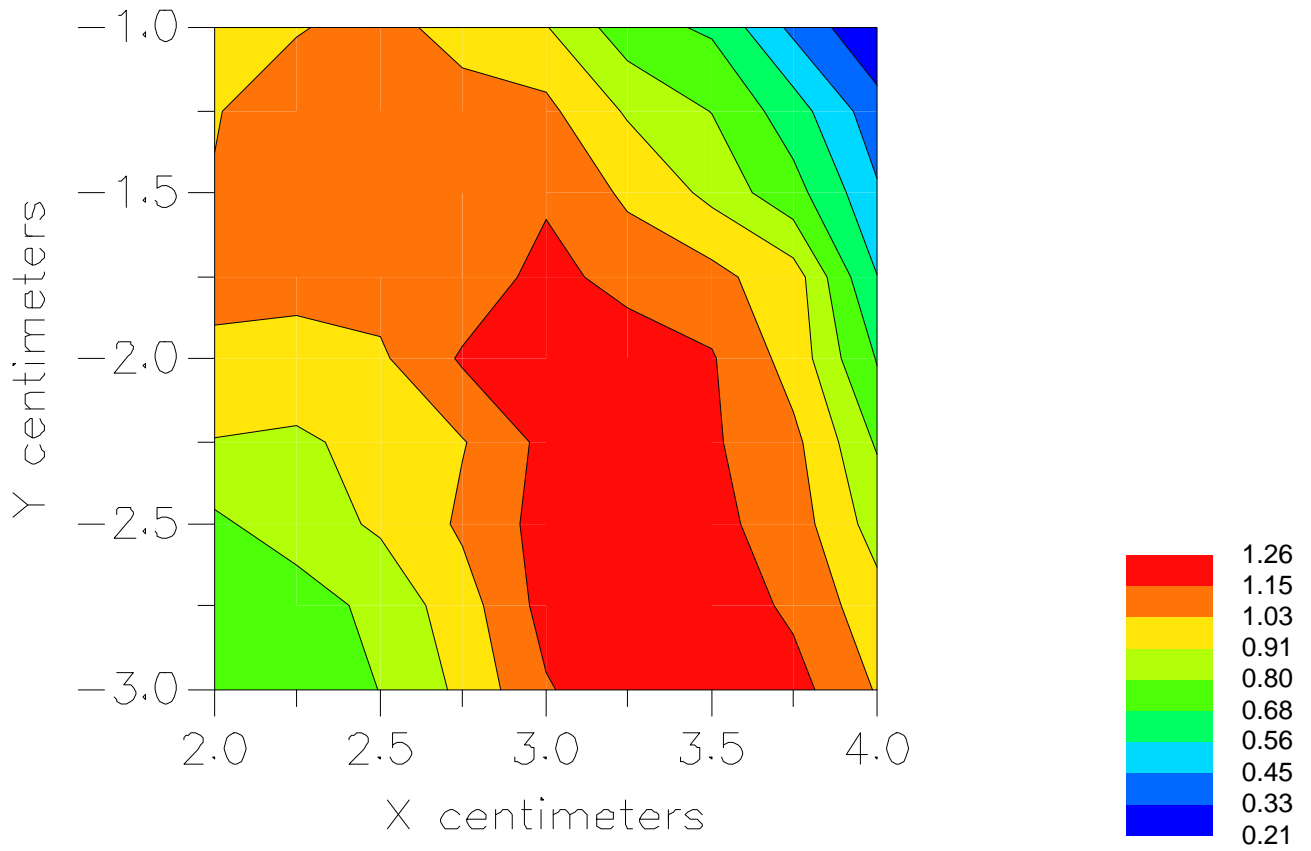


File : 01022615\_ZOOM

Start : 26-Feb-101 03:52:43 pm End : 26-Feb-101 04:03:56 pm

SANYO/C412SA/1;824.70MHz;W;Helical/Out;

Head/Left Ear;ZOOM/SAR;PCTEST/E Field/0 DegreesBrain/41.500/0.900



File : c:/idx3/SYSTEM/SARMEAS3/data/Normal/01022616\_ZOOM.VLT  
Start : 26-Feb-101 04:07:24 pm End : 26-Feb-101 04:16:56 pm

Radio Type : SANYO  
Model Number : C412SA  
Serial Number : 1  
Frequency : 835.89 MHz  
Peak Trans. Pwr : 0.240 W  
Start Trans. Pwr : 0.240 W  
Antenna Type : Helical  
Antenna Posn. : In  
Phantom Type : Head  
Phantom Posn. : Left Ear  
Scan Type : ZOOM/SAR  
Probe Name : PCTEST  
Field Type : E Field  
Orientation : 0 Degrees

Mixture Type = Brain  
Mixture Dielectric Constant = 41.500  
Mixture Conductivity = 0.900

Comment :  
SANYO CDMA-MODE PHONE  
CHAN 0363 Conducted 23.8 dBm  
SANYO CDMA-MODE PHONE

Robot : PCTEST

Probe Offset = 0.25 cm  
Sensor Factor = 0.0108  
Conversion Factor = 0.788

PCTEST Amplifier Channel Settings : 0.166 0.135 0.132

Max Location : X = 3.250, Y = -2.250, Z = 0.000 (cm) Value = 22.696

Measured Values (volts) =  
2.080E-002 1.827E-002 1.609E-002 1.404E-002 1.232E-002 1.092E-002  
9.449E-003 8.564E-003 7.285E-003 6.240E-003 5.154E-003 4.227E-003  
3.426E-003 2.813E-003 2.281E-003 2.071E-003 1.904E-003 1.895E-003  
1.879E-003 1.864E-003 1.782E-003

Calc. Voltage @ Surface (Vs) = 0.0236

Voltage @ 1.00 cm (Vt) = 0.0140

Ave. Voltage (Vs+Vt)/2 = 0.0188

Ave. SAR over 1 g (mW/g) = 1.3747

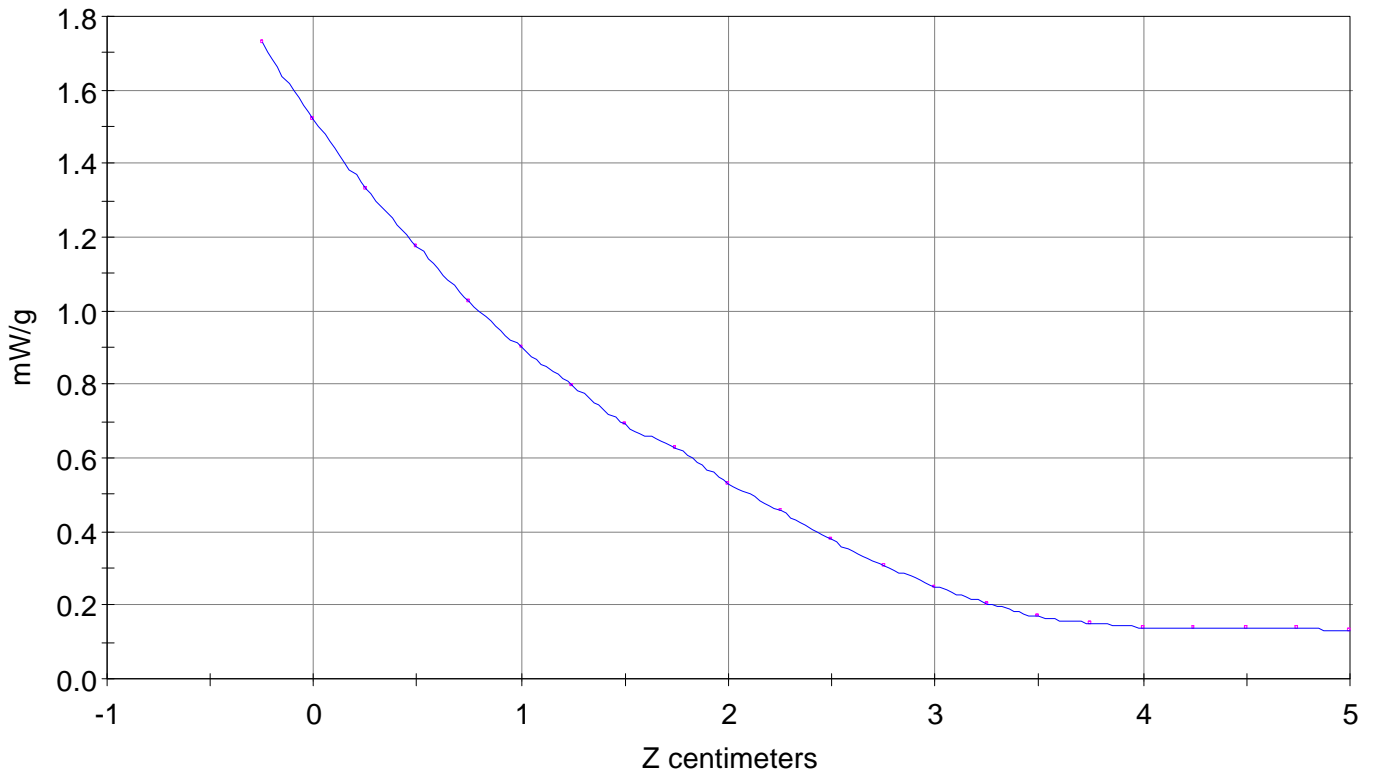
# SAR Scan

File : 01022616\_ZOOM

Start : 26-Feb-101 04:07:24 pm End : 26-Feb-101 04:16:56 pm

SANYO/C412SA/1;835.89MHz;W;Helical/In;

Head/Left Ear;ZOOM/SAR;PCTEST/E Field/0 DegreesBrain/41.500/0.900

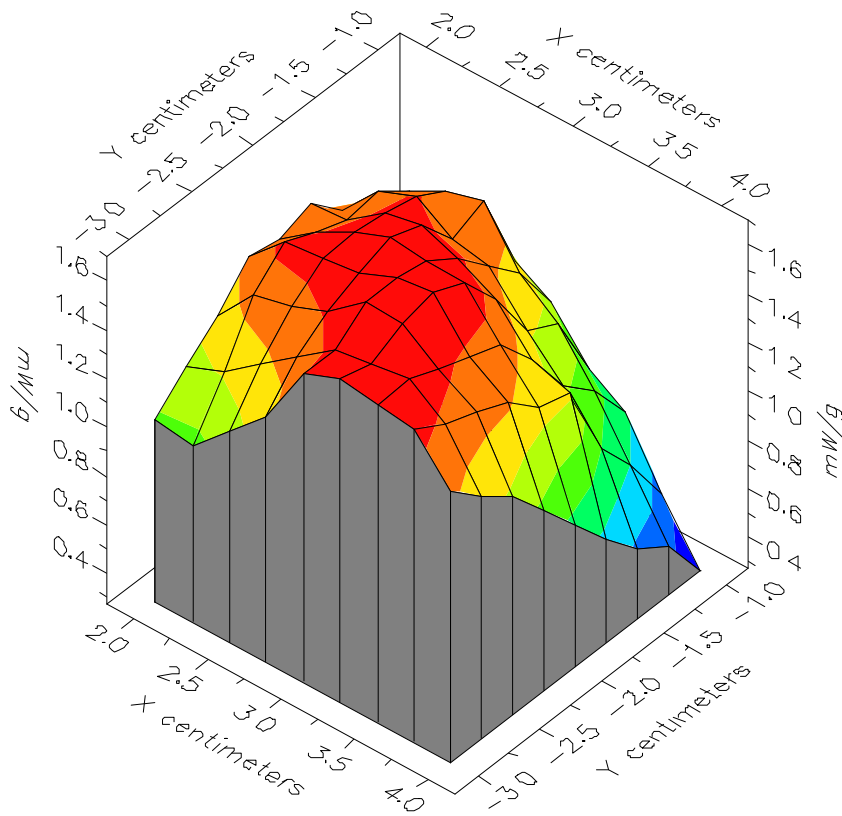


File : 01022616\_ZOOM

Start : 26-Feb-101 04:07:24 pm End : 26-Feb-101 04:16:56 pm

SANYO/C412SA/1;835.89MHz;W;Helical/In;

Head/Left Ear;ZOOM/SAR;PCTEST/E Field/0 DegreesBrain/41.500/0.900

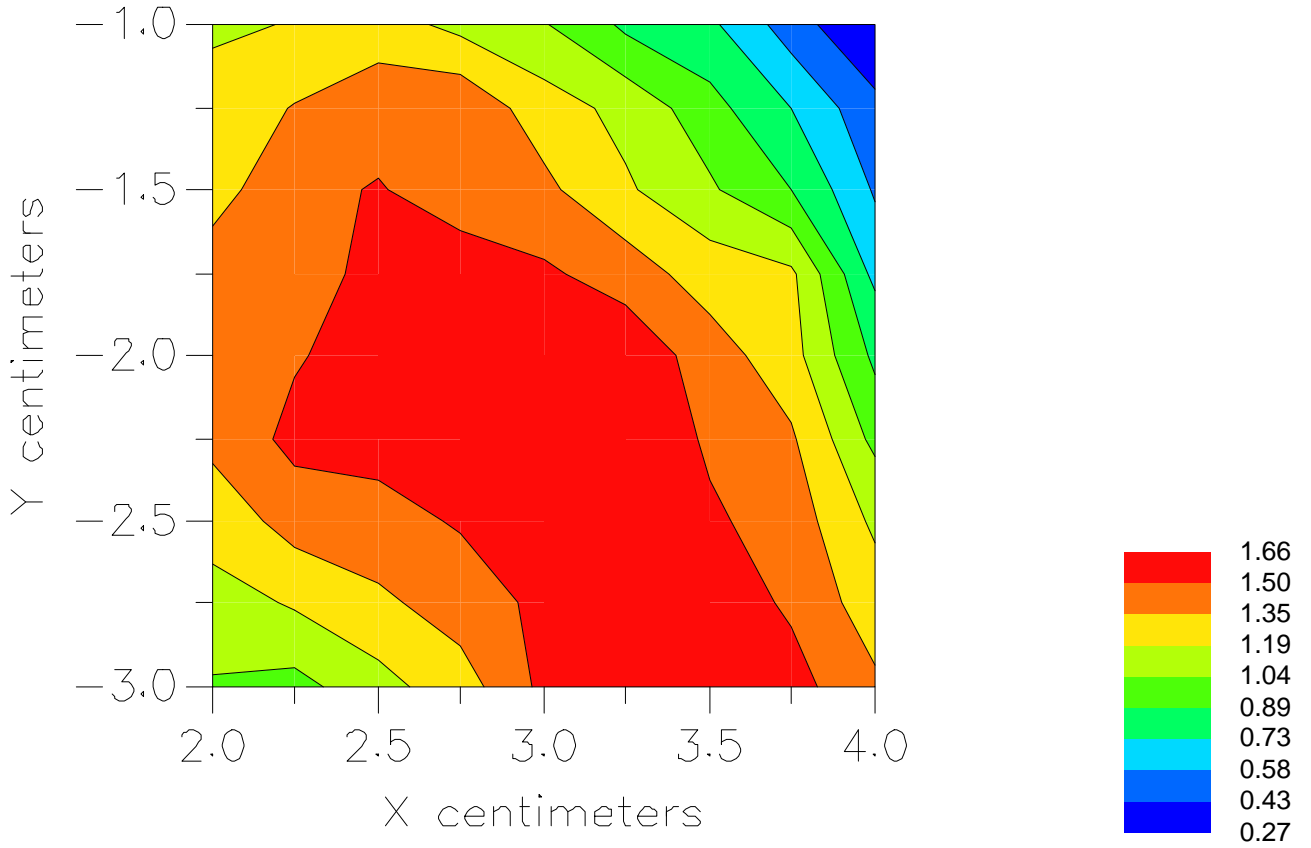


File : 01022616\_ZOOM

Start : 26-Feb-101 04:07:24 pm End : 26-Feb-101 04:16:56 pm

SANYO/C412SA/1;835.89MHz;W;Helical/In;

Head/Left Ear;ZOOM/SAR;PCTEST/E Field/0 DegreesBrain/41.500/0.900



File : c:/idx3/SYSTEM/SARMEAS3/data/Normal/01022610\_ZOOM.VLT  
Start : 26-Feb-101 01:35:17 pm End : 26-Feb-101 01:46:29 pm

Radio Type : SANYO  
Model Number : C412SA  
Serial Number : 1  
Frequency : 824.70 MHz  
Peak Trans. Pwr : 0.240 W  
Start Trans. Pwr : 0.240 W  
Antenna Type : Helical  
Antenna Posn. : Out  
Phantom Type : Head  
Phantom Posn. : Left Ear  
Scan Type : ZOOM/SAR  
Probe Name : PCTEST  
Field Type : E Field  
Orientation : 0 Degrees

Mixture Type = Brain  
Mixture Dielectric Constant = 41.500  
Mixture Conductivity = 0.900

Comment :  
SANYO CDMA-MODE PHONE  
CHAN 0363 Conducted 23.8 dBm  
SANYO CDMA-MODE PHONE

Robot : PCTEST

Probe Offset = 0.25 cm  
Sensor Factor = 0.0108  
Conversion Factor = 0.788

PCTEST Amplifier Channel Settings : 0.166 0.135 0.132

Max Location : X = 3.500, Y = -3.000, Z = 0.000 (cm) Value = 19.988

Measured Values (volts) =  
1.976E-002 1.882E-002 1.611E-002 1.416E-002 1.300E-002 1.159E-002  
9.925E-003 8.674E-003 7.187E-003 5.882E-003 4.695E-003 3.744E-003  
2.974E-003 2.453E-003 2.110E-003 2.006E-003 2.044E-003 2.153E-003  
2.210E-003 2.158E-003 1.906E-003

Calc. Voltage @ Surface (Vs) = 0.0219

Voltage @ 1.00 cm (Vt) = 0.0142

Ave. Voltage (Vs+Vt)/2 = 0.0180

Ave. SAR over 1 g (mW/g) = 1.3164

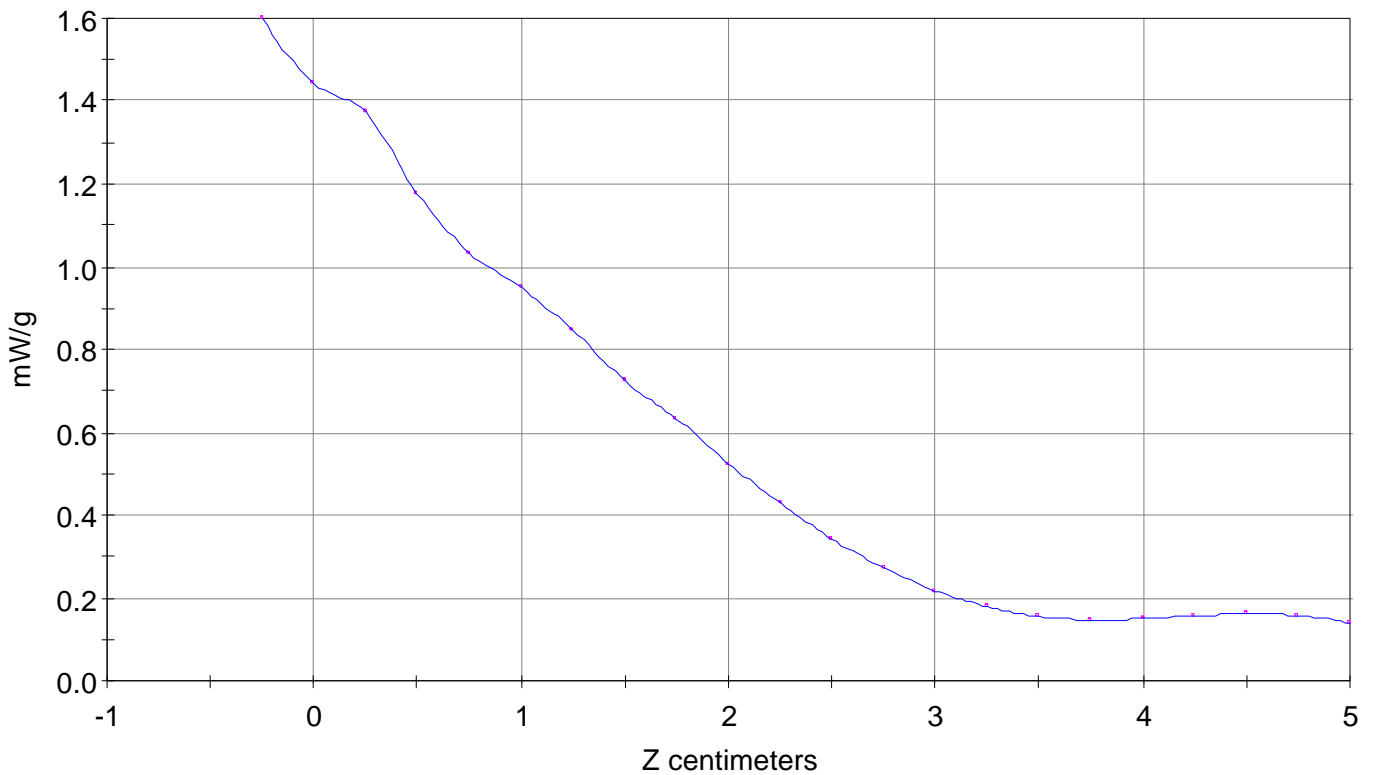
# SAR Scan

File : 01022610\_ZOOM

Start : 26-Feb-101 01:35:17 pm End : 26-Feb-101 01:46:29 pm

SANYO/C412SA/1;824.70MHz;W;Helical/Out;

Head/Left Ear;ZOOM/SAR;PCTEST/E Field/0 DegreesBrain/41.500/0.900

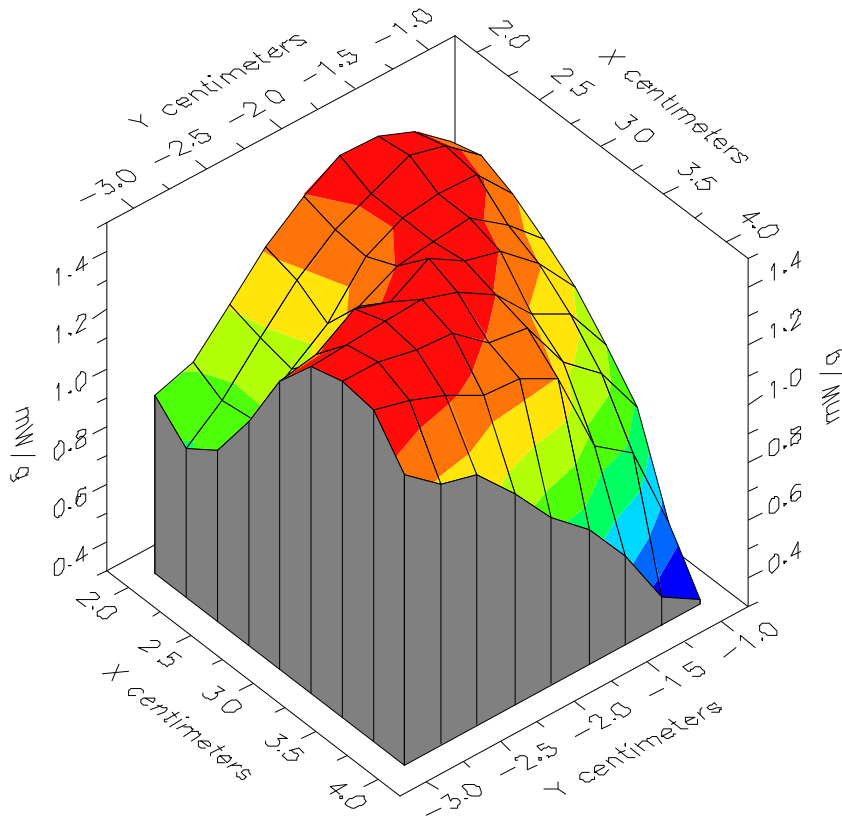


File : 01022610\_ZOOM

Start : 26-Feb-101 01:35:17 pm End : 26-Feb-101 01:46:29 pm

SANYO/C412SA/1;824.70MHz;W;Helical/Out;

Head/Left Ear;ZOOM/SAR;PCTEST/E Field/0 DegreesBrain/41.500/0.900



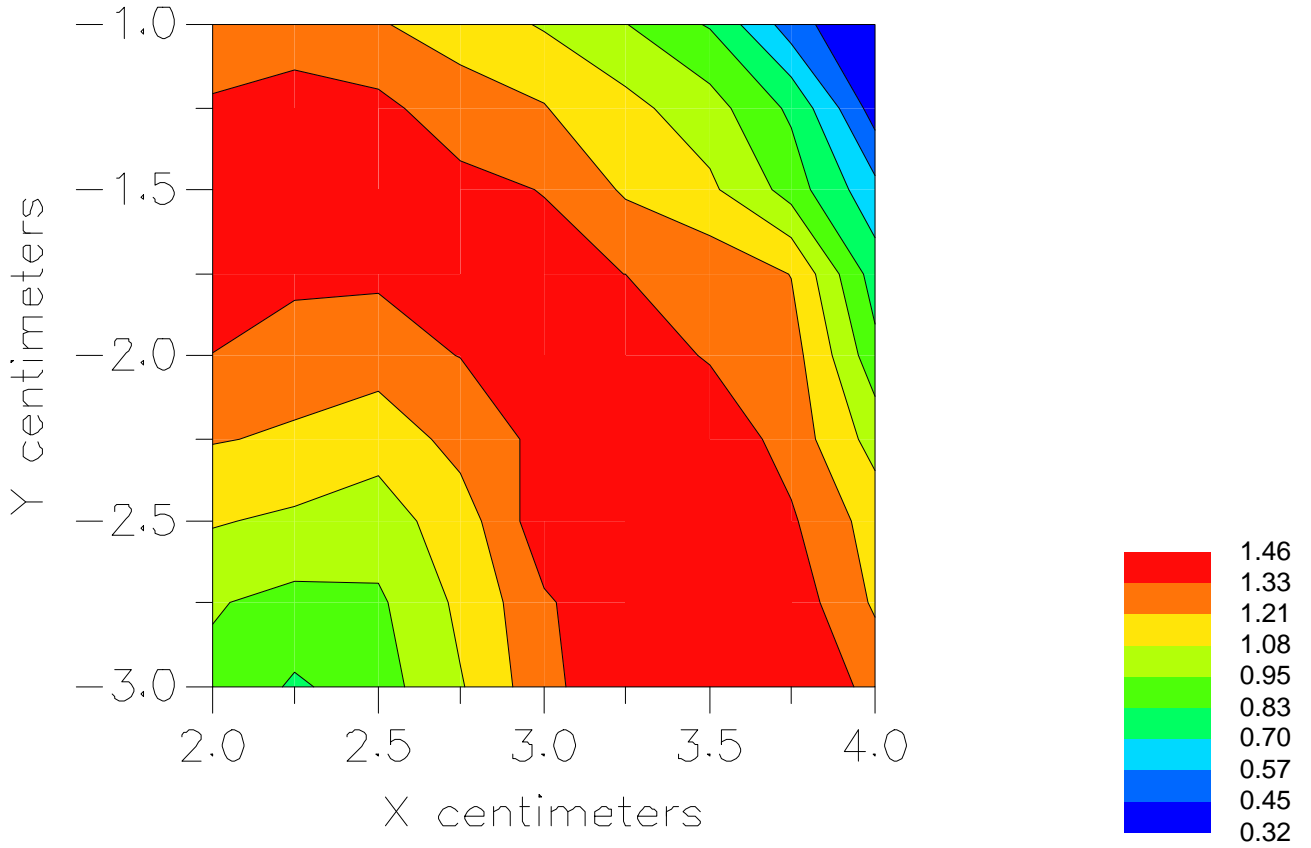


File : 01022610\_ZOOM

Start : 26-Feb-101 01:35:17 pm End : 26-Feb-101 01:46:29 pm

SANYO/C412SA/1;824.70MHz;W;Helical/Out;

Head/Left Ear;ZOOM/SAR;PCTEST/E Field/0 DegreesBrain/41.500/0.900



File : c:/idx3/SYSTEM/SARMEAS3/data/Normal/01022614\_ZOOM.VLT  
Start : 26-Feb-101 03:33:07 pm End : 26-Feb-101 03:44:21 pm

Radio Type : SANYO  
Model Number : C412SA  
Serial Number : 1  
Frequency : 848.31 MHz  
Peak Trans. Pwr : 0.240 W  
Start Trans. Pwr : 0.240 W  
Antenna Type : Helical  
Antenna Posn. : In  
Phantom Type : Head  
Phantom Posn. : Left Ear  
Scan Type : ZOOM/SAR  
Probe Name : PCTEST  
Field Type : E Field  
Orientation : 0 Degrees

Mixture Type = Brain  
Mixture Dielectric Constant = 41.500  
Mixture Conductivity = 0.900

Comment :  
SANYO CDMA-MODE PHONE  
CHAN 0777 Conducted 23.8 dBm  
SANYO CDMA-MODE PHONE

Robot : PCTEST

Probe Offset = 0.25 cm  
Sensor Factor = 0.0108  
Conversion Factor = 0.788

PCTEST Amplifier Channel Settings : 0.166 0.135 0.132

Max Location : X = 3.250, Y = -2.250, Z = 0.000 (cm) Value = 21.996

Measured Values (volts) =  
2.067E-002 1.811E-002 1.576E-002 1.371E-002 1.214E-002 1.059E-002  
9.456E-003 8.429E-003 7.252E-003 6.242E-003 5.108E-003 4.237E-003  
3.360E-003 2.771E-003 2.270E-003 2.003E-003 1.878E-003 1.835E-003  
1.844E-003 1.785E-003 1.725E-003

Calc. Voltage @ Surface (Vs) = 0.0237

Voltage @ 1.00 cm (Vt) = 0.0137

Ave. Voltage (Vs+Vt)/2 = 0.0187

Ave. SAR over 1 g (mW/g) = 1.3637

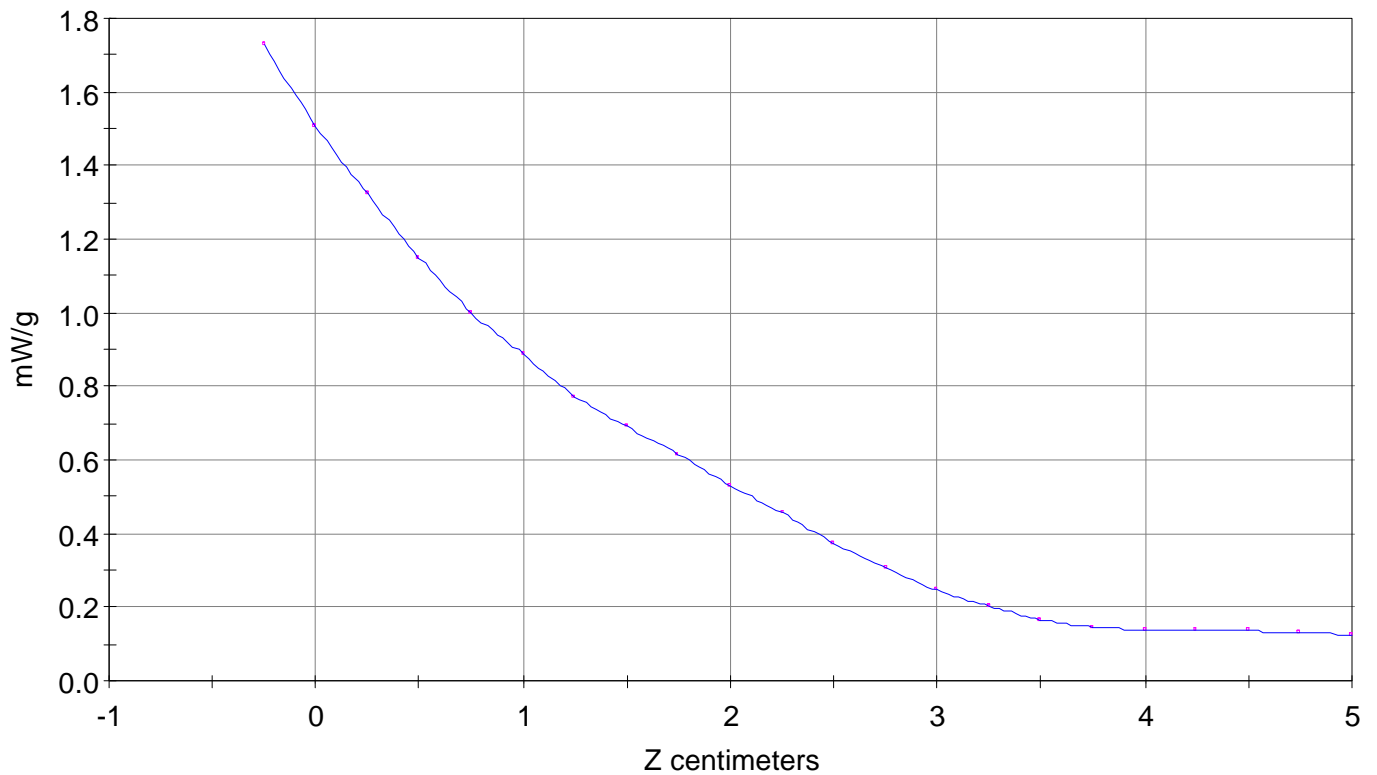
### SAR Scan

File : 01022614\_ZOOM

Start : 26-Feb-101 03:33:07 pm End : 26-Feb-101 03:44:21 pm

SANYO/C412SA/1;848.31MHz;W;Helical/In;

Head/Left Ear;ZOOM/SAR;PCTEST/E Field/0 DegreesBrain/41.500/0.900

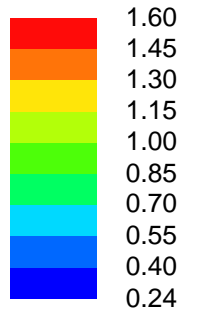
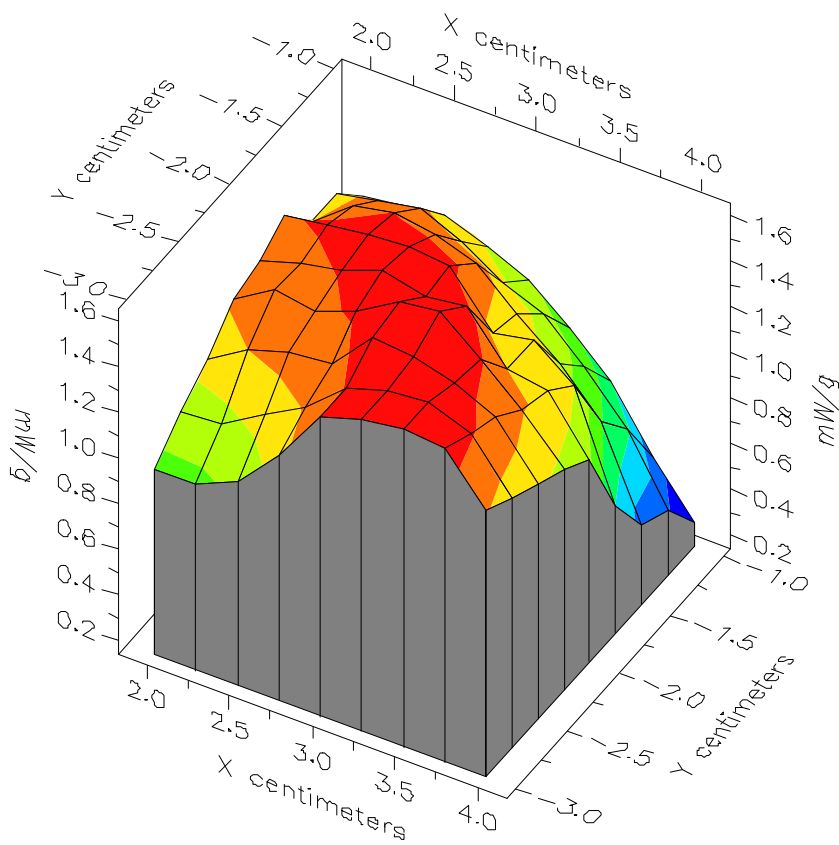


File : 01022614\_ZOOM

Start : 26-Feb-101 03:33:07 pm End : 26-Feb-101 03:44:21 pm

SANYO/C412SA/1;848.31MHz;W;Helical/In;

Head/Left Ear;ZOOM/SAR;PCTEST/E Field/0 DegreesBrain/41.500/0.900

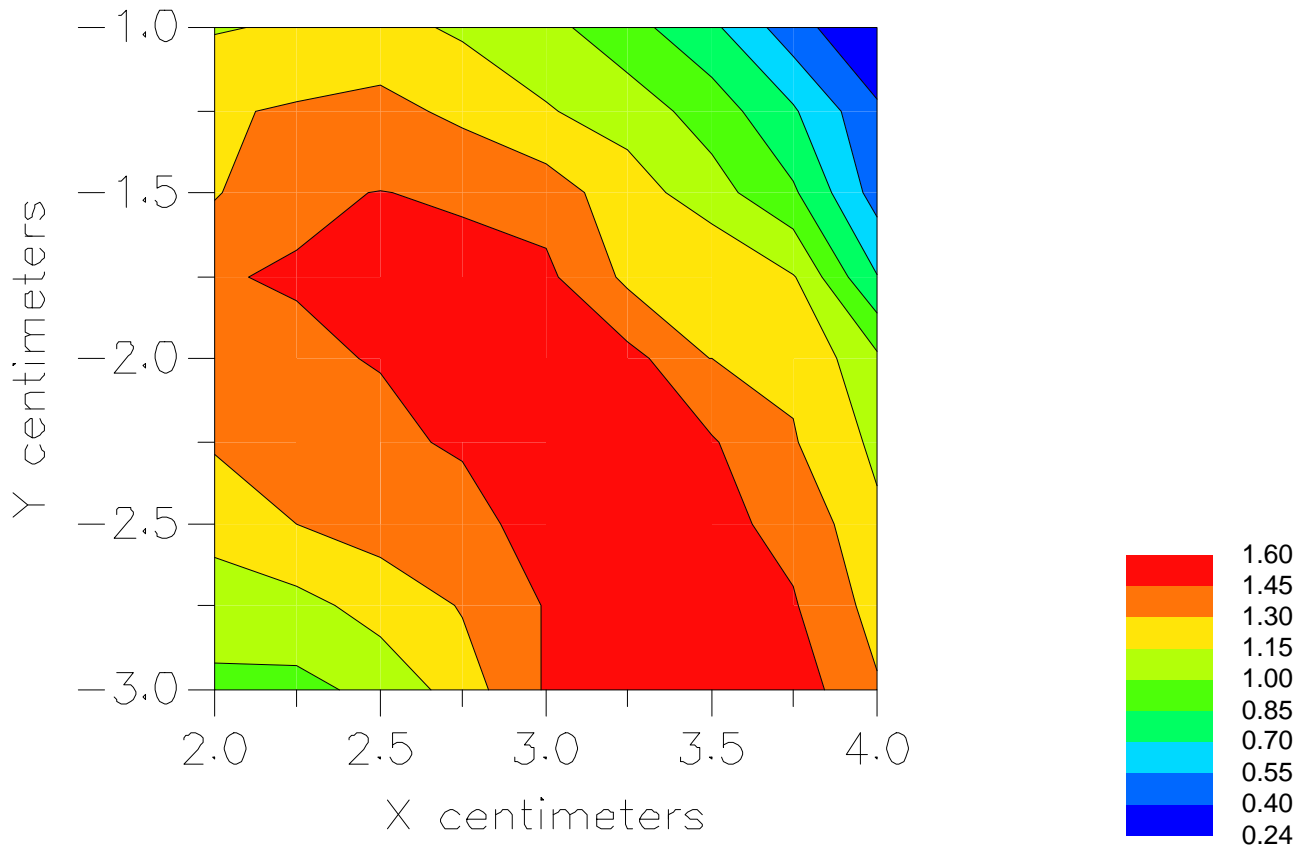


File : 01022614\_ZOOM

Start : 26-Feb-101 03:33:07 pm End : 26-Feb-101 03:44:21 pm

SANYO/C412SA/1;848.31MHz;W;Helical/In;

Head/Left Ear;ZOOM/SAR;PCTEST/E Field/0 DegreesBrain/41.500/0.900



File : c:/idx3/SYSTEM/SARMEAS3/data/Normal/01022617\_ZOOM.VLT  
Start : 26-Feb-101 04:28:19 pm End : 26-Feb-101 04:37:51 pm

Radio Type : SANYO  
Model Number : C412SA  
Serial Number : 1  
Frequency : 848.31 MHz  
Peak Trans. Pwr : 0.240 W  
Start Trans. Pwr : 0.240 W  
Antenna Type : Helical  
Antenna Posn. : Out  
Phantom Type : Head  
Phantom Posn. : Left Ear  
Scan Type : ZOOM/SAR  
Probe Name : PCTEST  
Field Type : E Field  
Orientation : 0 Degrees

Mixture Type = Brain  
Mixture Dielectric Constant = 41.500  
Mixture Conductivity = 0.900

Comment :  
SANYO CDMA-MODE PHONE  
CHAN 0777 Conducted 23.8 dBm  
SANYO CDMA-MODE PHONE

Robot : PCTEST

Probe Offset = 0.25 cm  
Sensor Factor = 0.0108  
Conversion Factor = 0.788

PCTEST Amplifier Channel Settings : 0.166 0.135 0.132

Max Location : X = 3.250, Y = -2.500, Z = 0.000 (cm) Value = 18.295

Measured Values (volts) =  
1.785E-002 1.521E-002 1.357E-002 1.174E-002 1.043E-002 9.154E-003  
8.144E-003 7.136E-003 6.226E-003 5.162E-003 4.352E-003 3.531E-003  
2.814E-003 2.261E-003 1.947E-003 1.637E-003 1.618E-003 1.667E-003  
1.669E-003 1.659E-003 1.653E-003

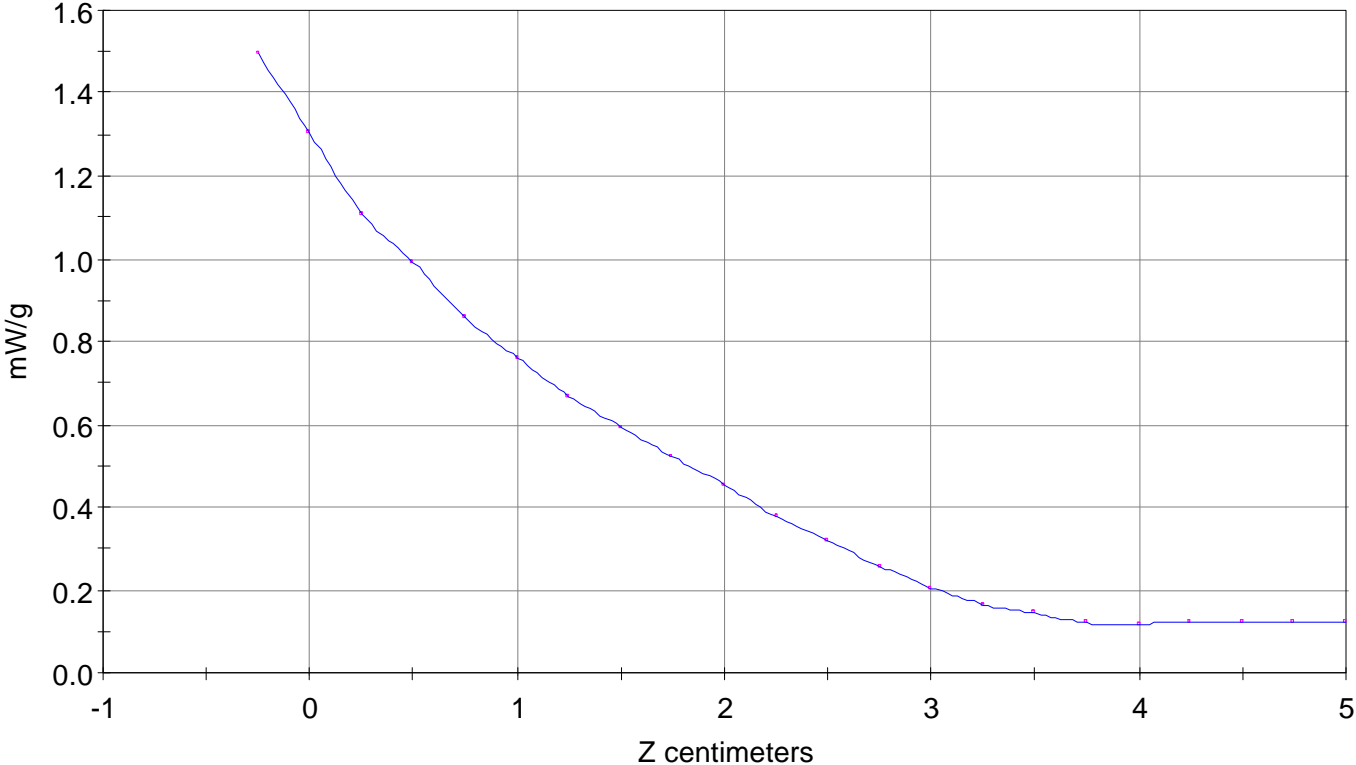
Calc. Voltage @ Surface (Vs) = 0.0205

Voltage @ 1.00 cm (Vt) = 0.0117

Ave. Voltage (Vs+Vt)/2 = 0.0161

Ave. SAR over 1 g (mW/g) = 1.1752

SAR Scan  
File : 01022617\_ZOOM  
Start : 26-Feb-101 04:28:19 pm End : 26-Feb-101 04:37:51 pm  
SANYO/C412SA/1;848.31MHz;W;Helical/Out;  
Head/Left Ear;ZOOM/SAR;PCTEST/E Field/0 DegreesBrain/41.500/0.900

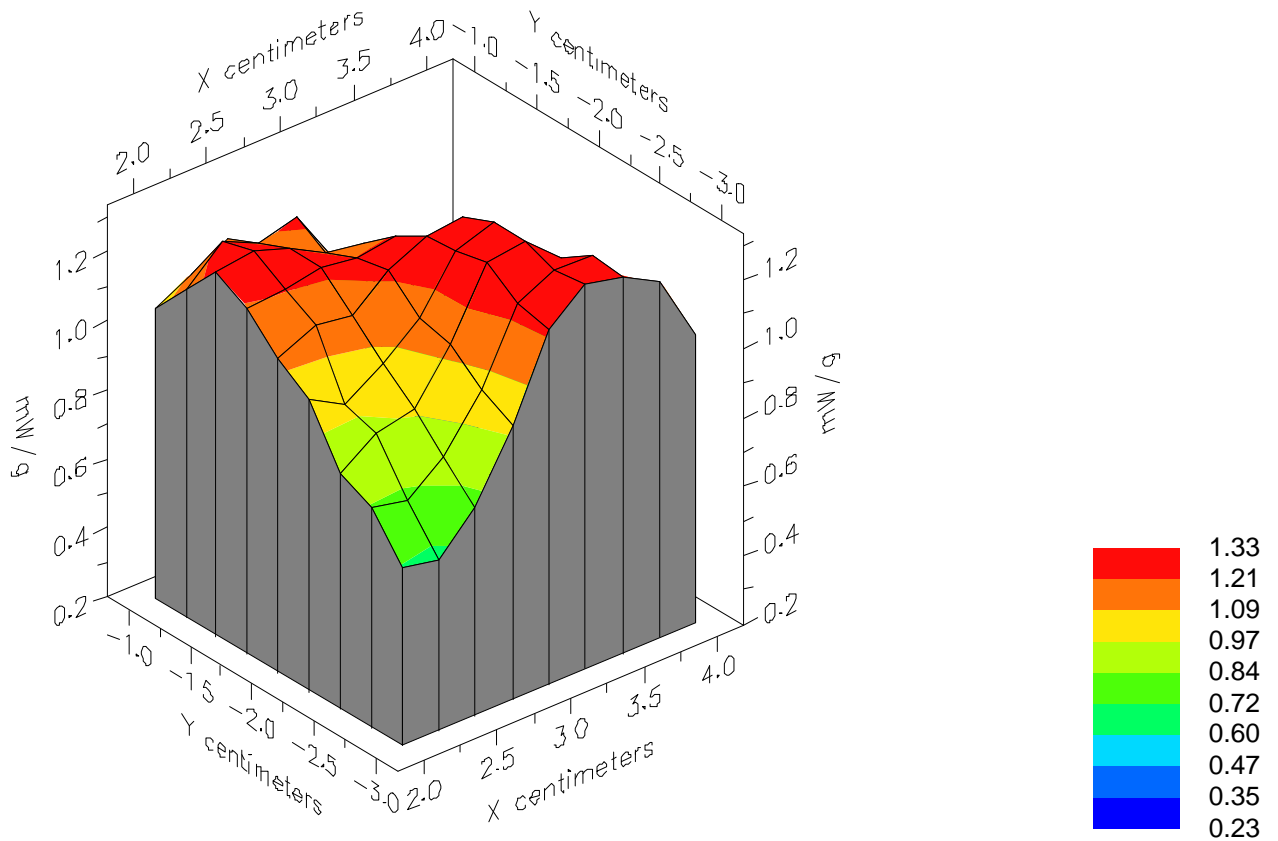


File : 01022617\_ZOOM

Start : 26-Feb-101 04:28:19 pm End : 26-Feb-101 04:37:51 pm

SANYO/C412SA/1;848.31MHz;W;Helical/Out;

Head/Left Ear;ZOOM/SAR;PCTEST/E Field/0 DegreesBrain/41.500/0.900



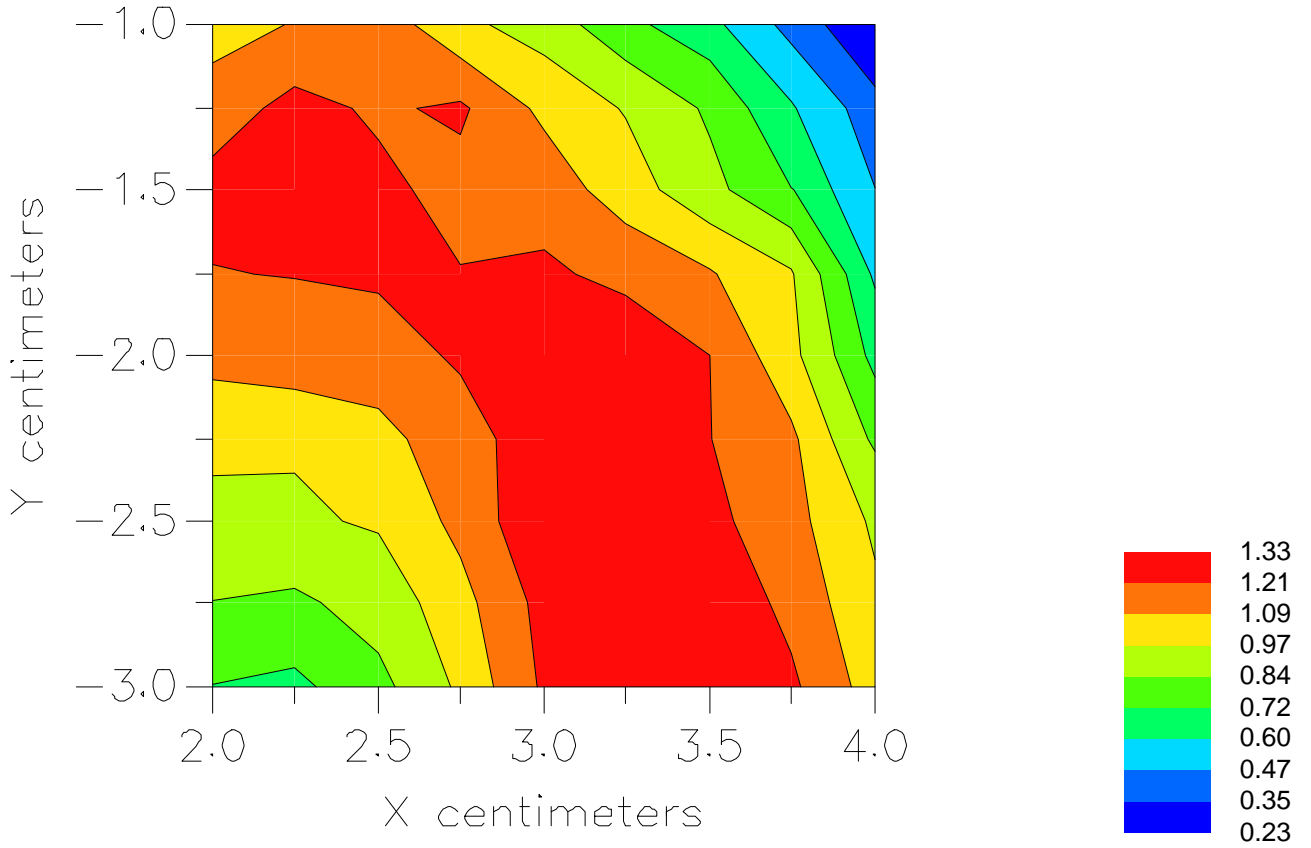


File : 01022617\_ZOOM

Start : 26-Feb-101 04:28:19 pm End : 26-Feb-101 04:37:51 pm

SANYO/C412SA/1;848.31MHz;W;Helical/Out;

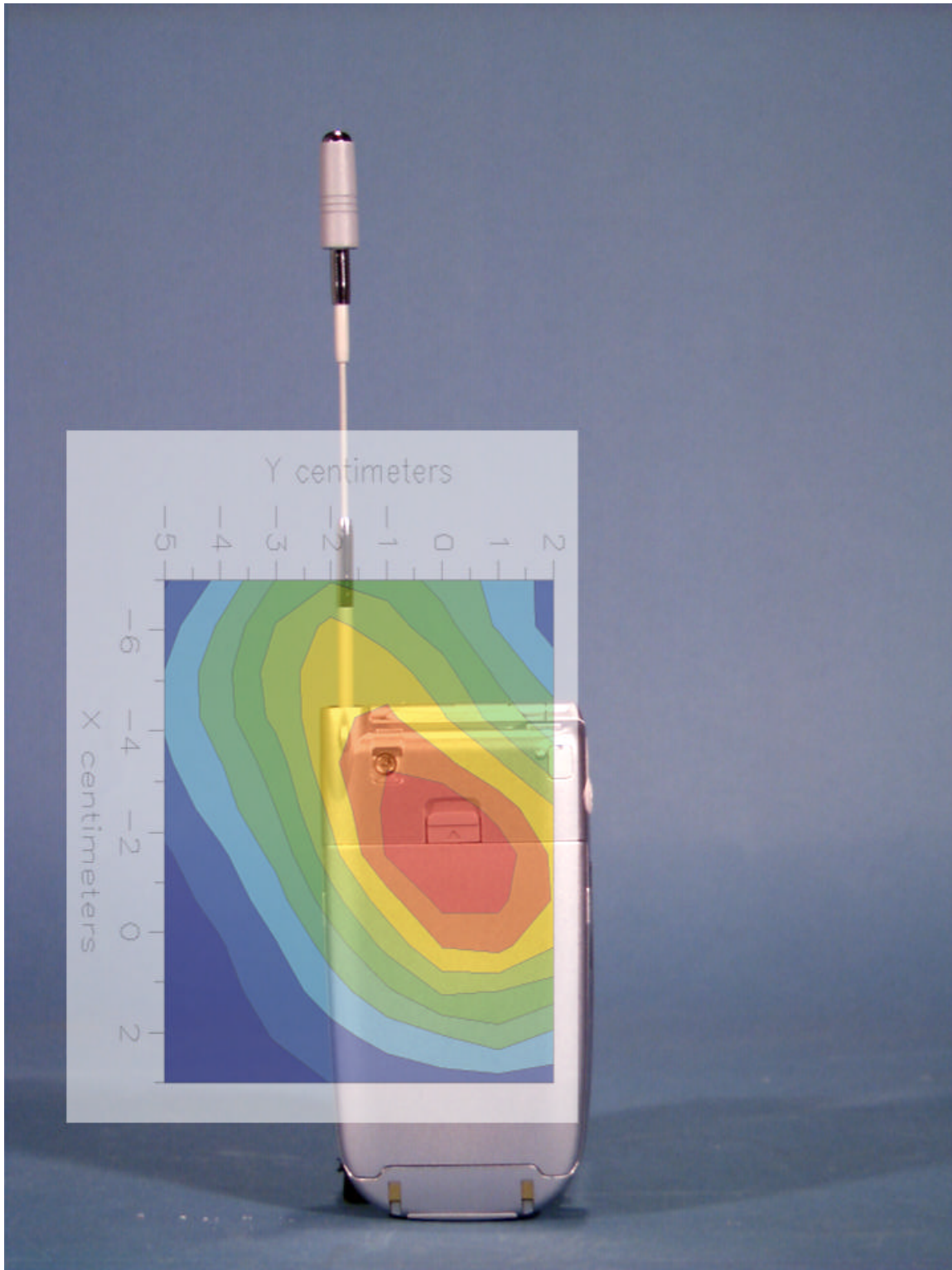
Head/Left Ear;ZOOM/SAR;PCTEST/E Field/0 DegreesBrain/41.500/0.900



# Peak SAR Location

---

## Body SAR



File : c:/idx3/SYSTEM/SARMEAS3/data/Normal/01022722\_ZOOM.VLT  
Start : 27-Feb-101 04:32:22 pm End : 27-Feb-101 04:39:40 pm

Radio Type : SANYO  
Model Number : C412SA  
Serial Number : 1  
Frequency : 824.70 MHz  
Peak Trans. Pwr : 0.225 W  
Start Trans. Pwr : 0.225 W  
Antenna Type : Helical  
Antenna Posn. : In  
Phantom Type : Body  
Phantom Posn. : Abdomen  
Scan Type : ZOOM/SAR  
Probe Name : PCTEST  
Field Type : E Field  
Orientation : 0 Degrees

Mixture Type = Muscle  
Mixture Dielectric Constant = 51.700  
Mixture Conductivity = 1.100

Comment :  
SANYO CDMA-MODE PHONE - BODY SAR  
CHAN 1013 Conducted 23.5 dBm  
SANYO CDMA-MODE PHONE

Robot : PCTEST

Probe Offset = 0.25 cm  
Sensor Factor = 0.0108  
Conversion Factor = 0.894

PCTEST Amplifier Channel Settings : 0.166 0.135 0.132

Max Location : X = -2.000, Y = -1.000, Z = 0.000 (cm) Value = 9.968

Measured Values (volts) =  
9.340E-003 7.228E-003 5.895E-003 5.256E-003 4.880E-003 4.598E-003  
4.323E-003 3.937E-003 3.544E-003 2.967E-003 2.279E-003 1.597E-003  
1.034E-003 7.197E-004 6.734E-004 6.735E-004 9.673E-004 1.219E-003  
1.319E-003 1.103E-003 6.511E-004

Calc. Voltage @ Surface (Vs) = 0.0118

Voltage @ 1.00 cm (Vt) = 0.0053

Ave. Voltage (Vs+Vt)/2 = 0.0085

Ave. SAR over 1 g (mW/g) = 0.7043

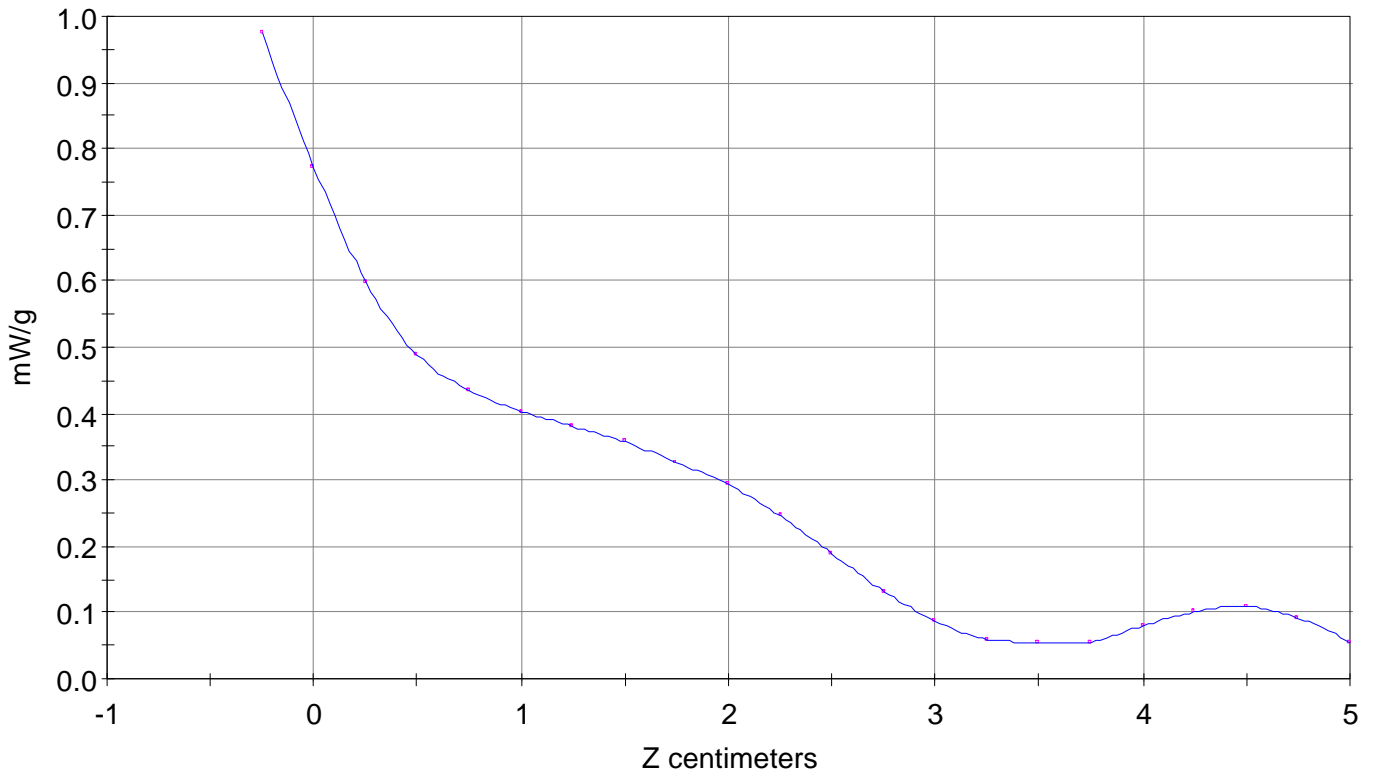
SAR Scan

File : 01022722\_ZOOM

Start : 27-Feb-101 04:32:22 pm End : 27-Feb-101 04:39:40 pm

SANYO/C412SA/1;824.70MHz;W;Helical/In;

Body/Abdomen;ZOOM/SAR;PCTEST/E Field/0 DegreesMuscle/51.700/1.100

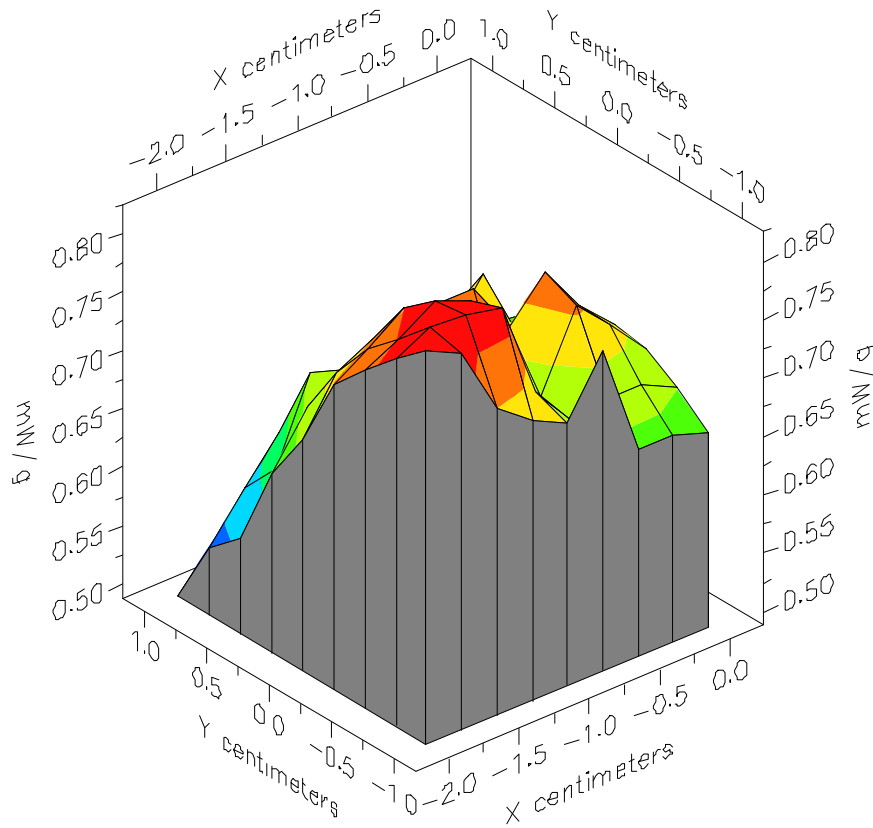


File : 01022722\_ZOOM

Start : 27-Feb-101 04:32:22 pm End : 27-Feb-101 04:39:40 pm

SANYO/C412SA/1;824.70MHz;W;Helical/In;

Body/Abdomen;ZOOM/SAR;PCTEST/E Field/0 DegreesMuscle/51.700/1.100

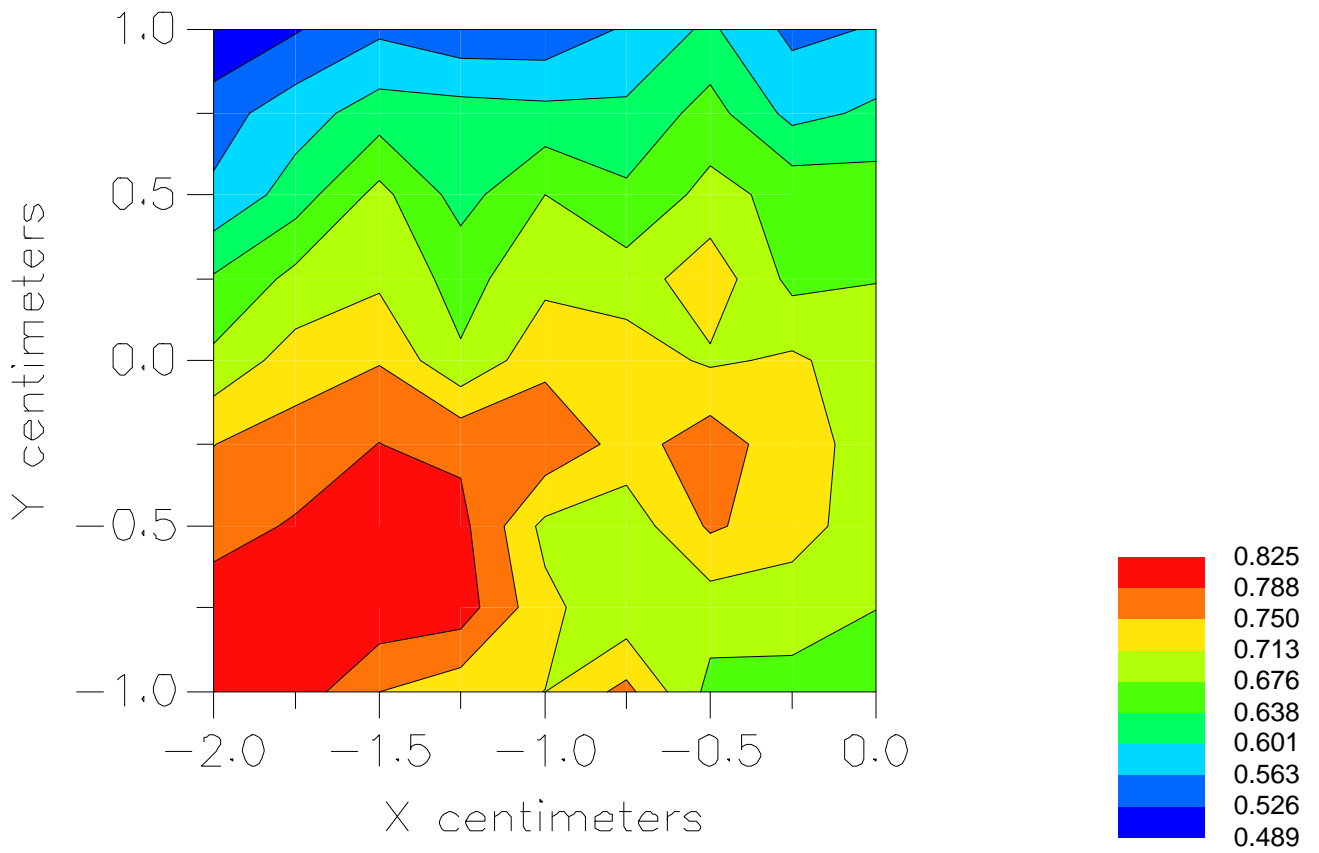


File : 01022722\_ZOOM

Start : 27-Feb-101 04:32:22 pm End : 27-Feb-101 04:39:40 pm

SANYO/C412SA/1;824.70MHz;W;Helical/In;

Body/Abdomen;ZOOM/SAR;PCTEST/E Field/0 DegreesMuscle/51.700/1.100



File : c:/idx3/SYSTEM/SARMEAS3/data/Normal/01022709\_ZOOM.VLT  
Start : 27-Feb-101 11:36:28 am End : 27-Feb-101 11:43:47 am

Radio Type : SANYO  
Model Number : C412SA  
Serial Number : 1  
Frequency : 824.70 MHz  
Peak Trans. Pwr : 0.225 W  
Start Trans. Pwr : 0.225 W  
Antenna Type : Helical  
Antenna Posn. : Out  
Phantom Type : Body  
Phantom Posn. : Abdomen  
Scan Type : ZOOM/SAR  
Probe Name : PCTEST  
Field Type : E Field  
Orientation : 0 Degrees

Mixture Type = Muscle  
Mixture Dielectric Constant = 51.700  
Mixture Conductivity = 1.100

Comment :  
SANYO CDMA-MODE PHONE - BODY SAR  
CHAN 1013 Conducted 23.5 dBm  
SANYO CDMA-MODE PHONE

Robot : PCTEST

Probe Offset = 0.25 cm  
Sensor Factor = 0.0108  
Conversion Factor = 0.894

PCTEST Amplifier Channel Settings : 0.166 0.135 0.132

Max Location : X = -1.250, Y = 0.000, Z = 0.000 (cm) Value = 15.373

Measured Values (volts) =  
1.442E-002 1.185E-002 9.678E-003 8.079E-003 7.005E-003 6.398E-003  
6.114E-003 5.955E-003 5.709E-003 5.398E-003 4.914E-003 4.152E-003  
3.255E-003 2.254E-003 1.461E-003 9.761E-004 8.718E-004 1.089E-003  
1.507E-003 1.976E-003 2.159E-003

Calc. Voltage @ Surface (Vs) = 0.0176

Voltage @ 1.00 cm (Vt) = 0.0081

Ave. Voltage (Vs+Vt)/2 = 0.0128

Ave. SAR over 1 g (mW/g) = 1.0625

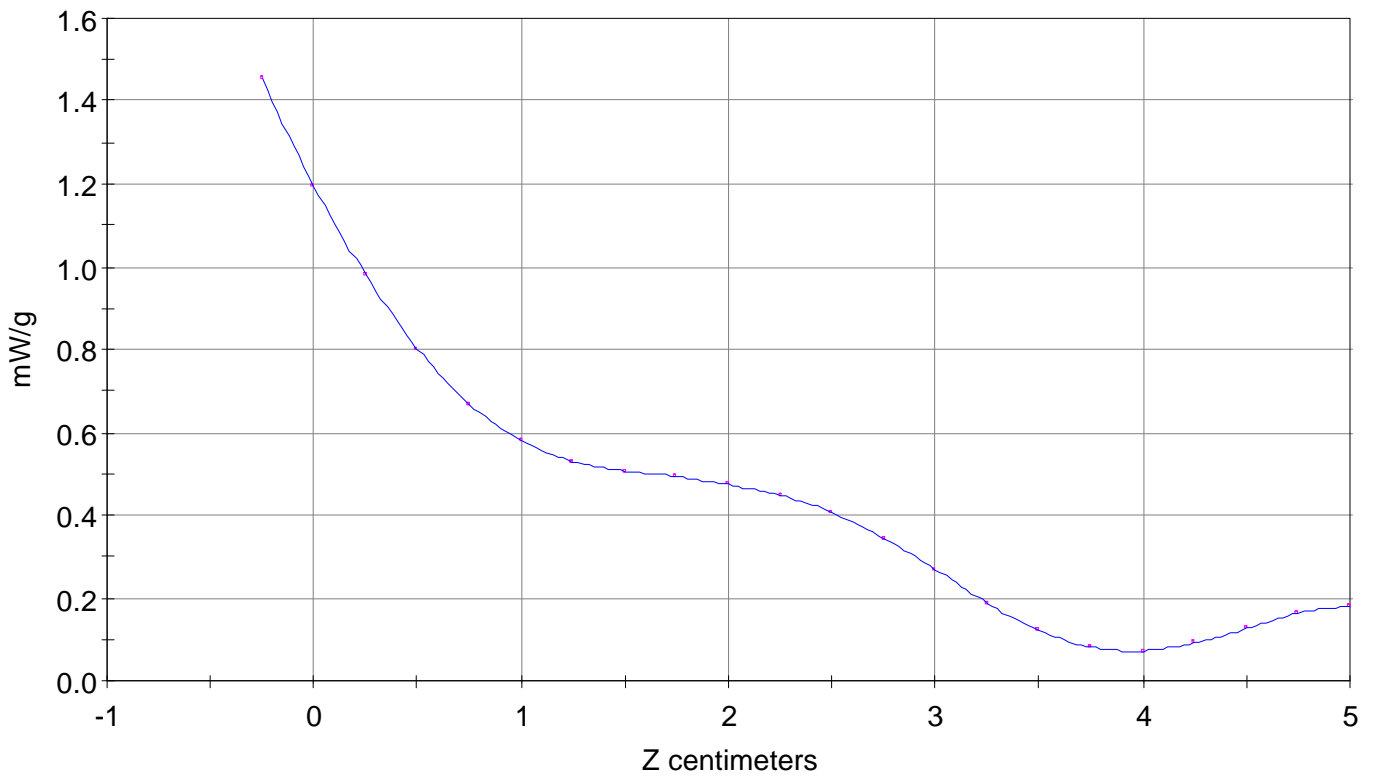
# SAR Scan

File : 01022709\_ZOOM

Start : 27-Feb-101 11:36:28 am End : 27-Feb-101 11:43:47 am

SANYO/C412SA/1;824.70MHz;W;Helical/Out;

Body/Abdomen;ZOOM/SAR;PCTEST/E Field/0 DegreesMuscle/51.700/1.100



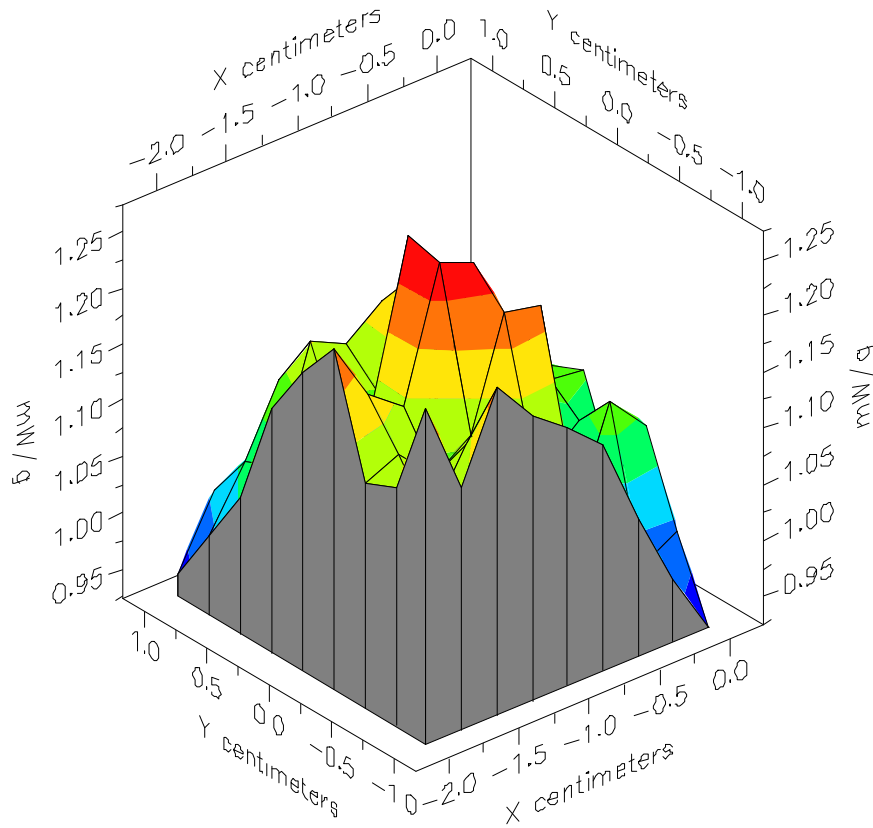


File : 01022709\_ZOOM

Start : 27-Feb-101 11:36:28 am End : 27-Feb-101 11:43:47 am

SANYO/C412SA/1;824.70MHz;W;Helical/Out;

Body/Abdomen;ZOOM/SAR;PCTEST/E Field/0 DegreesMuscle/51.700/1.100

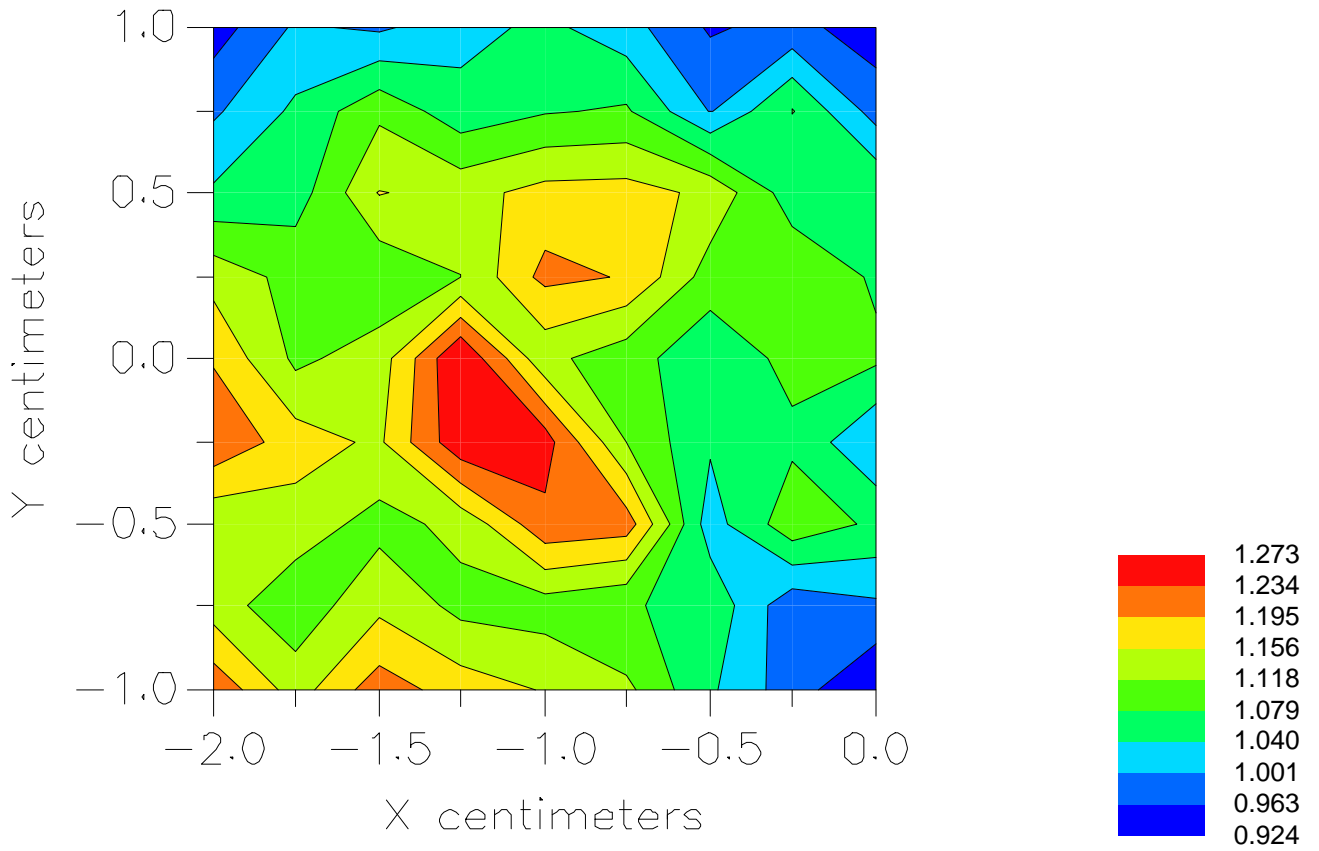


File : 01022709\_ZOOM

Start : 27-Feb-101 11:36:28 am End : 27-Feb-101 11:43:47 am

SANYO/C412SA/1;824.70MHz;W;Helical/Out;

Body/Abdomen;ZOOM/SAR;PCTEST/E Field/0 DegreesMuscle/51.700/1.100



File : c:/idx3/SYSTEM/SARMEAS3/data/Normal/01022719\_ZOOM.VLT  
Start : 27-Feb-101 03:25:46 pm End : 27-Feb-101 03:36:36 pm

Radio Type : SANYO  
Model Number : C412SA  
Serial Number : 1  
Frequency : 836.49 MHz  
Peak Trans. Pwr : 0.240 W  
Start Trans. Pwr : 0.240 W  
Antenna Type : Helical  
Antenna Posn. : In  
Phantom Type : Body  
Phantom Posn. : Abdomen  
Scan Type : ZOOM/SAR  
Probe Name : PCTEST  
Field Type : E Field  
Orientation : 0 Degrees

Mixture Type = Muscle  
Mixture Dielectric Constant = 51.700  
Mixture Conductivity = 1.100

Comment :  
SANYO CDMA-MODE PHONE - BODY SAR  
CHAN 0383 Conducted 23.8 dBm  
SANYO CDMA-MODE PHONE

Robot : PCTEST

Probe Offset = 0.25 cm  
Sensor Factor = 0.0108  
Conversion Factor = 0.894

PCTEST Amplifier Channel Settings : 0.166 0.135 0.132

Max Location : X = -1.250, Y = -0.250, Z = 0.000 (cm) Value = 8.499

Measured Values (volts) =  
8.509E-003 6.561E-003 5.406E-003 4.612E-003 3.970E-003 3.573E-003  
3.351E-003 3.185E-003 3.084E-003 2.857E-003 2.535E-003 2.046E-003  
1.486E-003 1.087E-003 7.171E-004 5.174E-004 4.962E-004 6.215E-004  
8.033E-004 1.024E-003 1.043E-003

Calc. Voltage @ Surface (Vs) = 0.0107

Voltage @ 1.00 cm (Vt) = 0.0046

Ave. Voltage (Vs+Vt)/2 = 0.0076

Ave. SAR over 1 g (mW/g) = 0.6330

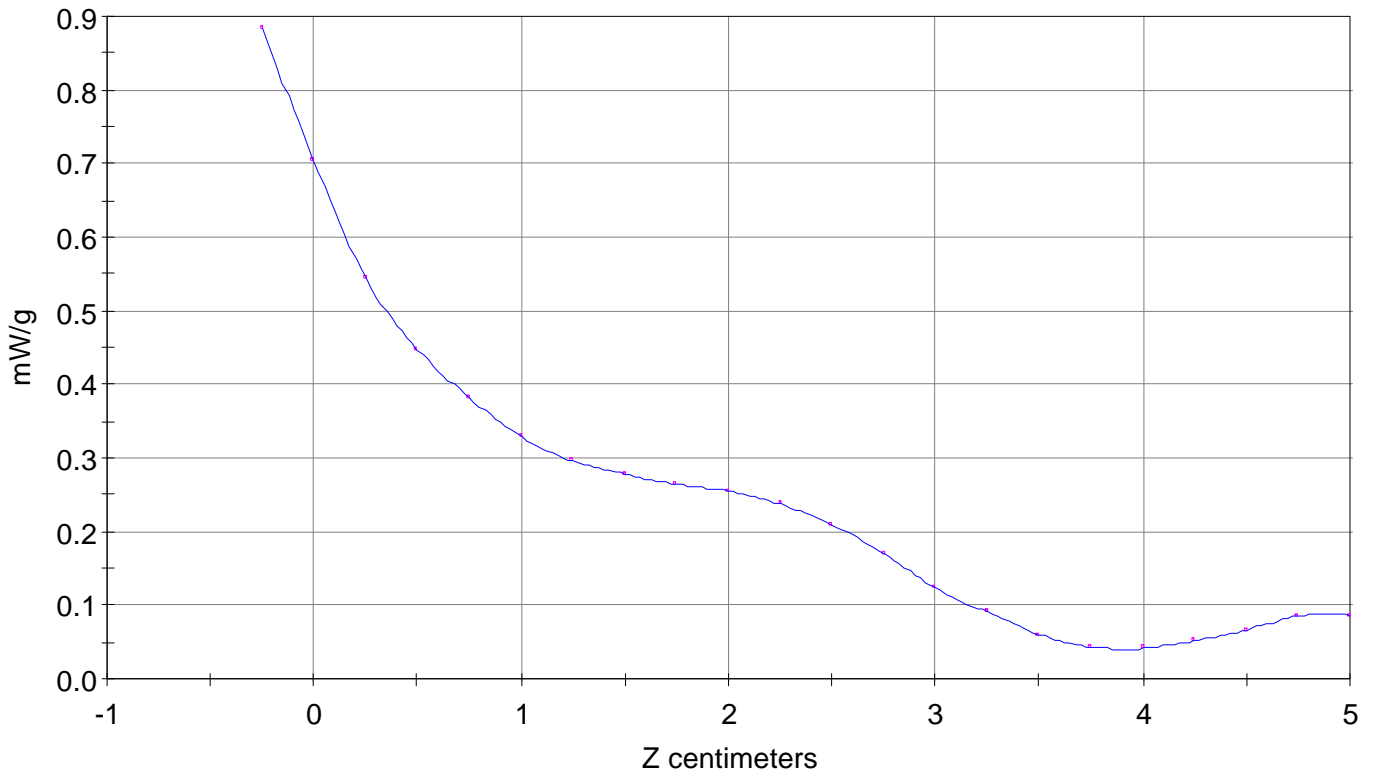
# SAR Scan

File : 01022719\_ZOOM

Start : 27-Feb-101 03:25:46 pm End : 27-Feb-101 03:36:36 pm

SANYO/C412SA/1;836.49MHz;W;Helical/In;

Body/Abdomen;ZOOM/SAR;PCTEST/E Field/0 DegreesMuscle/51.700/1.100

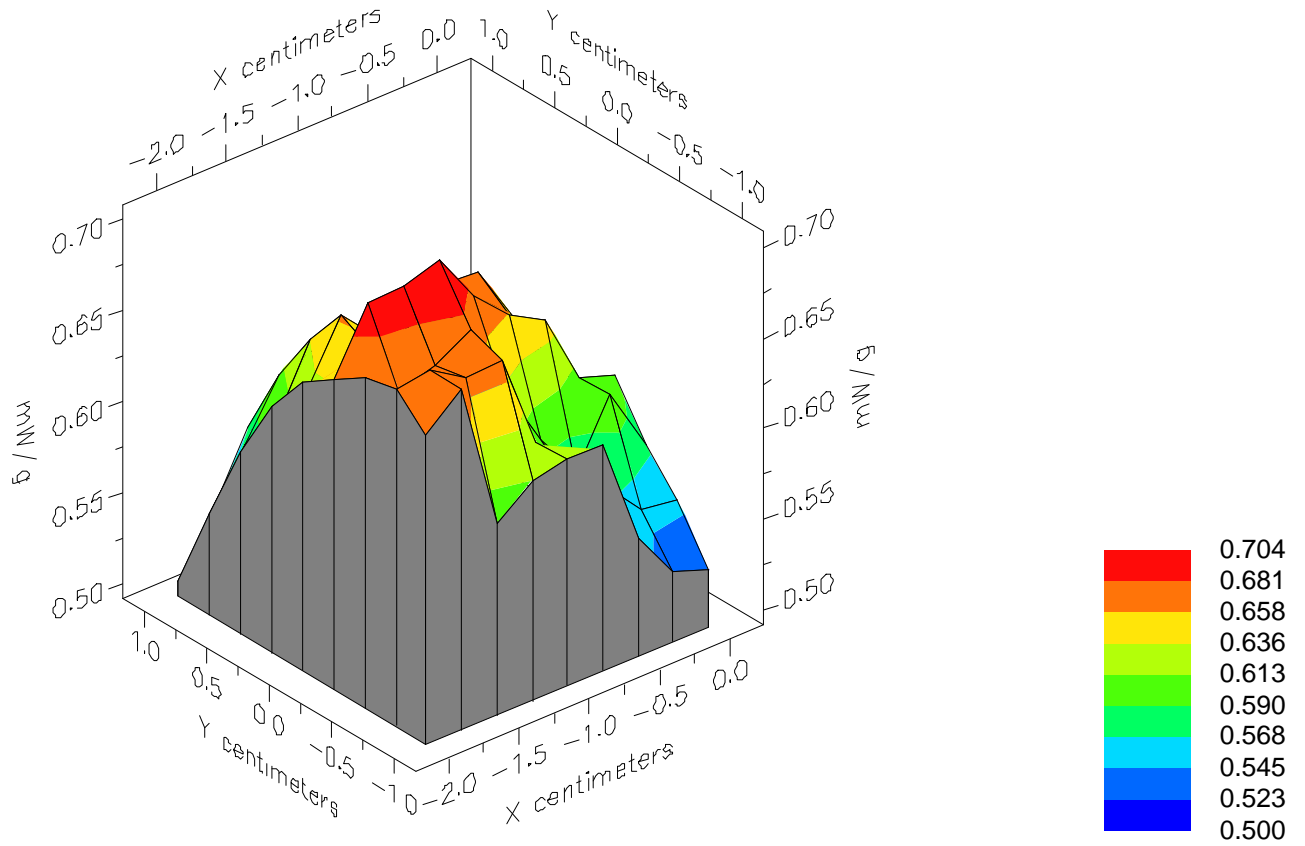


File : 01022719\_ZOOM

Start : 27-Feb-101 03:25:46 pm End : 27-Feb-101 03:36:36 pm

SANYO/C412SA/1;836.49MHz;W;Helical/In;

Body/Abdomen;ZOOM/SAR;PCTEST/E Field/0 DegreesMuscle/51.700/1.100

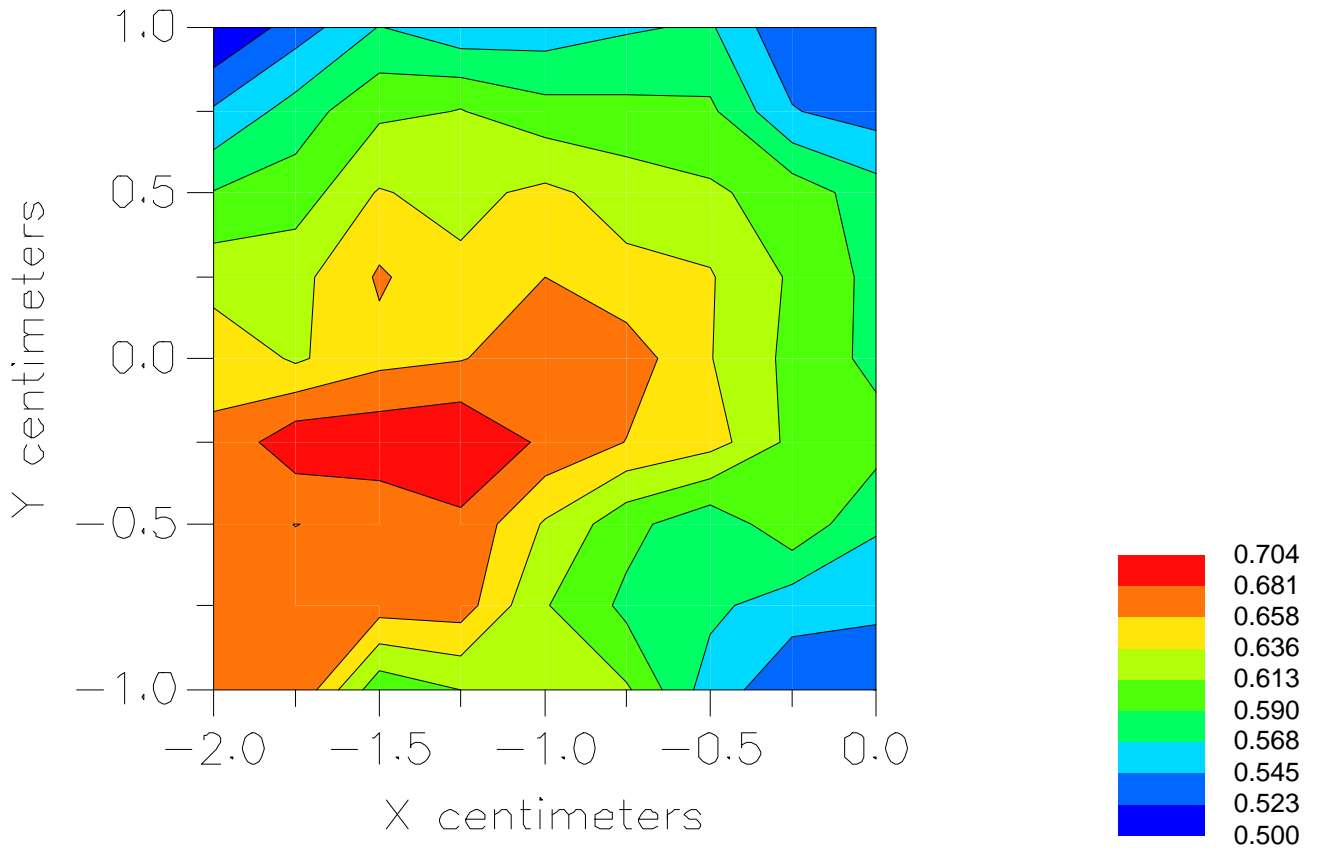


File : 01022719\_ZOOM

Start : 27-Feb-101 03:25:46 pm End : 27-Feb-101 03:36:36 pm

SANYO/C412SA/1;836.49MHz;W;Helical/In;

Body/Abdomen;ZOOM/SAR;PCTEST/E Field/0 DegreesMuscle/51.700/1.100



File : c:/idx3/SYSTEM/SARMEAS3/data/Normal/01022718\_ZOOM.VLT  
Start : 27-Feb-101 02:55:57 pm End : 27-Feb-101 03:06:46 pm

Radio Type : SANYO  
Model Number : C412SA  
Serial Number : 1  
Frequency : 836.49 MHz  
Peak Trans. Pwr : 0.250 W  
Start Trans. Pwr : 0.250 W  
Antenna Type : Helical  
Antenna Posn. : Out  
Phantom Type : Body  
Phantom Posn. : Abdomen  
Scan Type : ZOOM/SAR  
Probe Name : PCTEST  
Field Type : E Field  
Orientation : 0 Degrees

Mixture Type = Muscle  
Mixture Dielectric Constant = 51.700  
Mixture Conductivity = 1.100

Comment :  
SANYO CDMA-MODE PHONE - BODY SAR  
CHAN 0383 Conducted 24.0 dBm  
SANYO CDMA-MODE PHONE

Robot : PCTEST

Probe Offset = 0.25 cm  
Sensor Factor = 0.0108  
Conversion Factor = 0.894

PCTEST Amplifier Channel Settings : 0.166 0.135 0.132

Max Location : X = -1.500, Y = -0.500, Z = 0.000 (cm) Value = 18.340

Measured Values (volts) =  
1.726E-002 1.312E-002 1.093E-002 9.439E-003 8.649E-003 8.146E-003  
7.872E-003 7.451E-003 6.839E-003 5.913E-003 4.751E-003 3.378E-003  
2.276E-003 1.497E-003 1.090E-003 1.220E-003 1.642E-003 2.255E-003  
2.653E-003 2.551E-003 1.902E-003

Calc. Voltage @ Surface (Vs) = 0.0217

Voltage @ 1.00 cm (Vt) = 0.0094

Ave. Voltage (Vs+Vt)/2 = 0.0156

Ave. SAR over 1 g (mW/g) = 1.2890

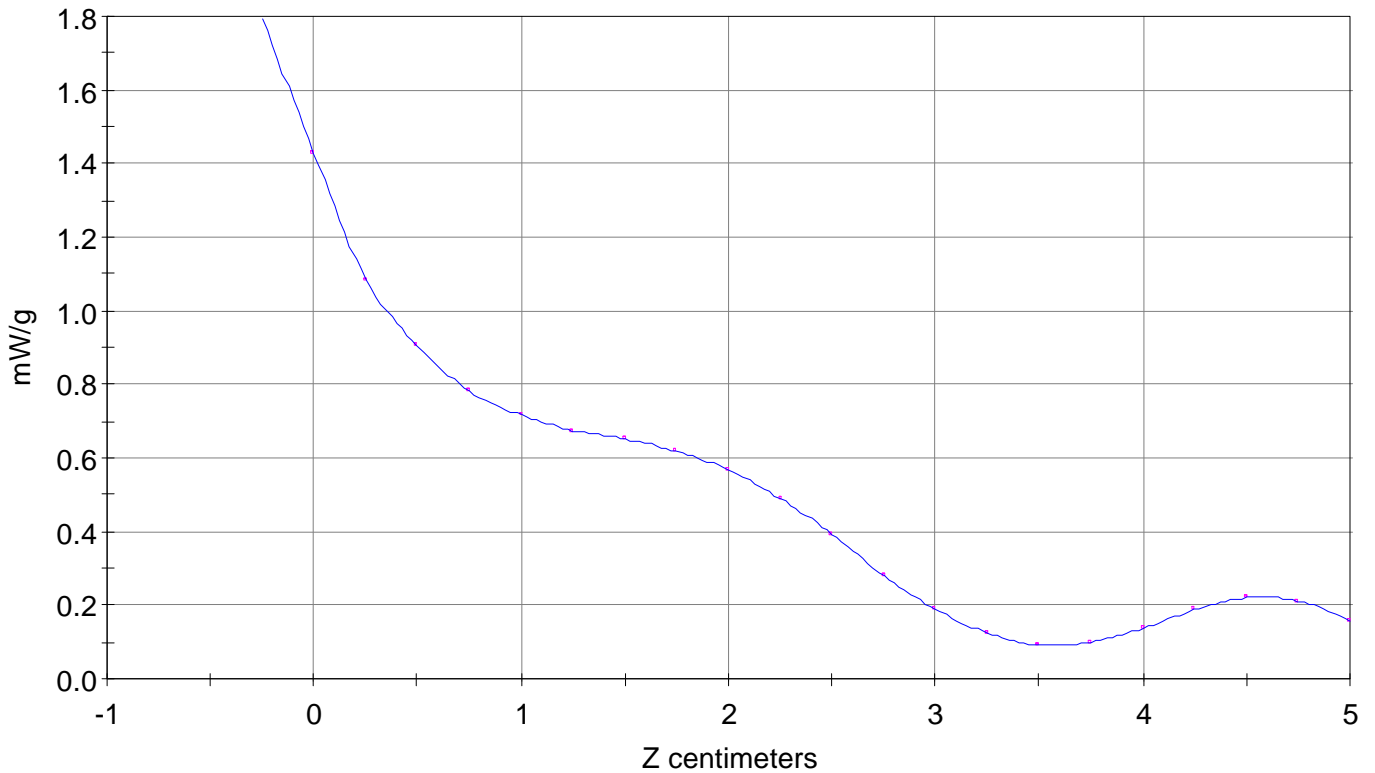
# SAR Scan

File : 01022718\_ZOOM

Start : 27-Feb-101 02:55:57 pm End : 27-Feb-101 03:06:46 pm

SANYO/C412SA/1;836.49MHz;W;Helical/Out;

Body/Abdomen;ZOOM/SAR;PCTEST/E Field/0 DegreesMuscle/51.700/1.100



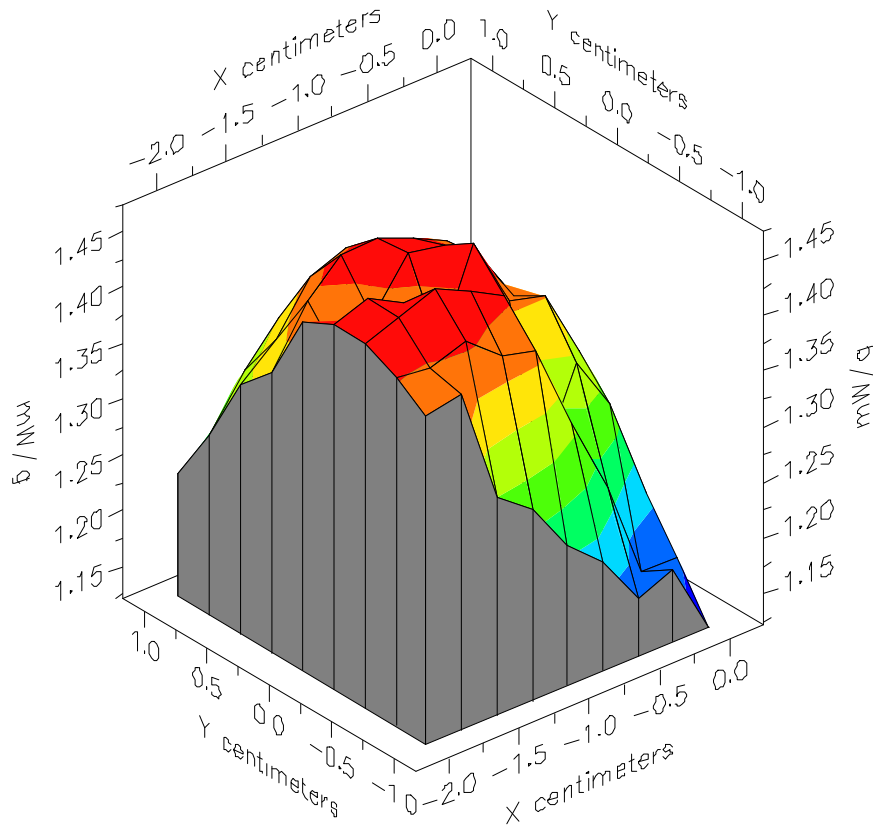


File : 01022718\_ZOOM

Start : 27-Feb-101 02:55:57 pm End : 27-Feb-101 03:06:46 pm

SANYO/C412SA/1;836.49MHz;W;Helical/Out;

Body/Abdomen;ZOOM/SAR;PCTEST/E Field/0 DegreesMuscle/51.700/1.100

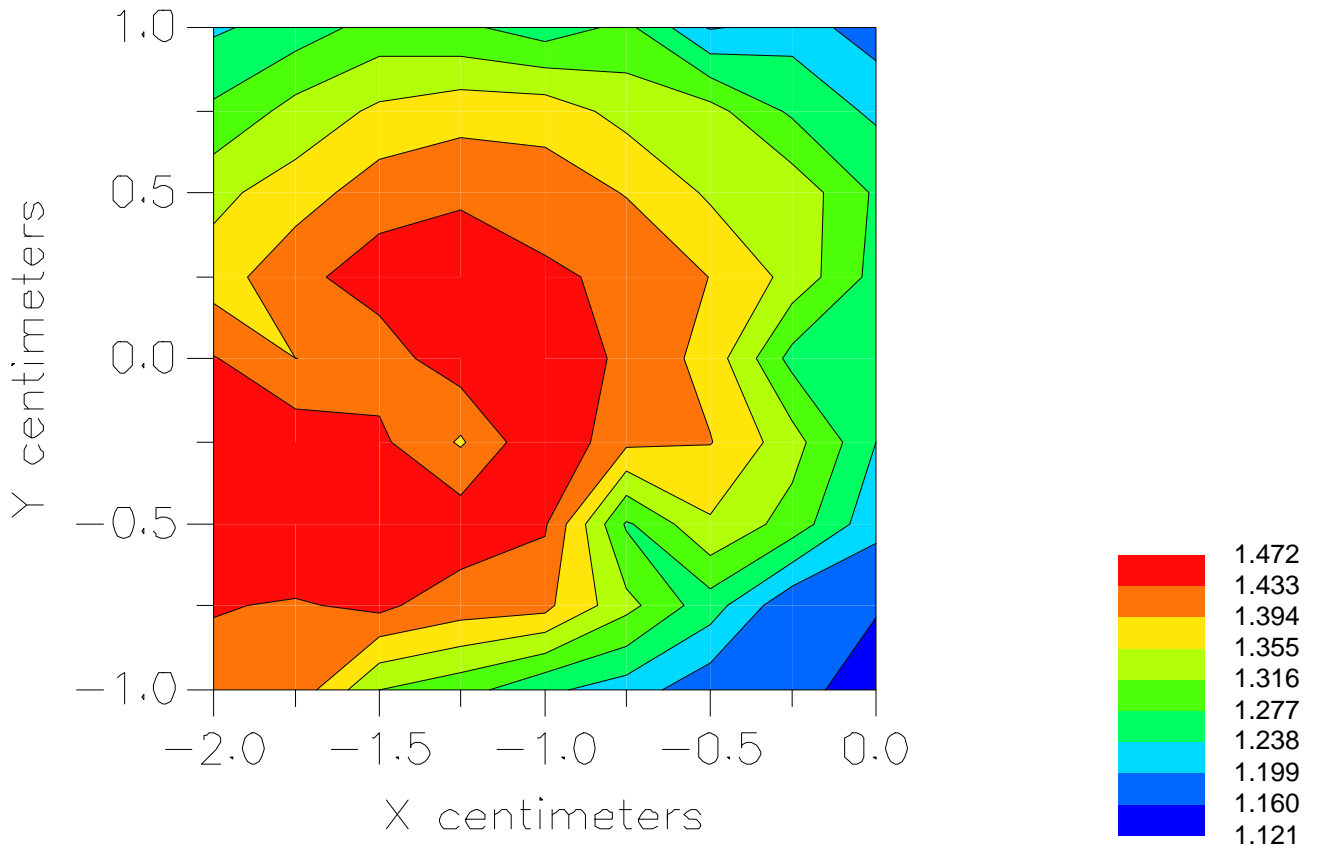


File : 01022718\_ZOOM

Start : 27-Feb-101 02:55:57 pm End : 27-Feb-101 03:06:46 pm

SANYO/C412SA/1;836.49MHz;W;Helical/Out;

Body/Abdomen;ZOOM/SAR;PCTEST/E Field/0 DegreesMuscle/51.700/1.100



File : c:/idx3/SYSTEM/SARMEAS3/data/Normal/01022721\_ZOOM.VLT  
Start : 27-Feb-101 04:13:43 pm End : 27-Feb-101 04:21:01 pm

Radio Type : SANYO  
Model Number : C412SA  
Serial Number : 1  
Frequency : 848.31 MHz  
Peak Trans. Pwr : 0.240 W  
Start Trans. Pwr : 0.240 W  
Antenna Type : Helical  
Antenna Posn. : In  
Phantom Type : Body  
Phantom Posn. : Abdomen  
Scan Type : ZOOM/SAR  
Probe Name : PCTEST  
Field Type : E Field  
Orientation : 0 Degrees

Mixture Type = Muscle  
Mixture Dielectric Constant = 51.700  
Mixture Conductivity = 1.100

Comment :  
SANYO CDMA-MODE PHONE - BODY SAR  
CHAN 0777 Conducted 23.8 dBm  
SANYO CDMA-MODE PHONE

Robot : PCTEST

Probe Offset = 0.25 cm  
Sensor Factor = 0.0108  
Conversion Factor = 0.894

PCTEST Amplifier Channel Settings : 0.166 0.135 0.132

Max Location : X = -1.500, Y = -0.750, Z = 0.000 (cm) Value = 10.545

Measured Values (volts) =  
1.005E-002 7.866E-003 6.683E-003 5.483E-003 4.818E-003 4.390E-003  
4.113E-003 3.864E-003 3.585E-003 3.240E-003 2.787E-003 2.191E-003  
1.516E-003 1.021E-003 6.984E-004 6.005E-004 6.702E-004 8.766E-004  
1.115E-003 1.217E-003 1.078E-003

Calc. Voltage @ Surface (Vs) = 0.0123

Voltage @ 1.00 cm (Vt) = 0.0055

Ave. Voltage (Vs+Vt)/2 = 0.0089

Ave. SAR over 1 g (mW/g) = 0.7376

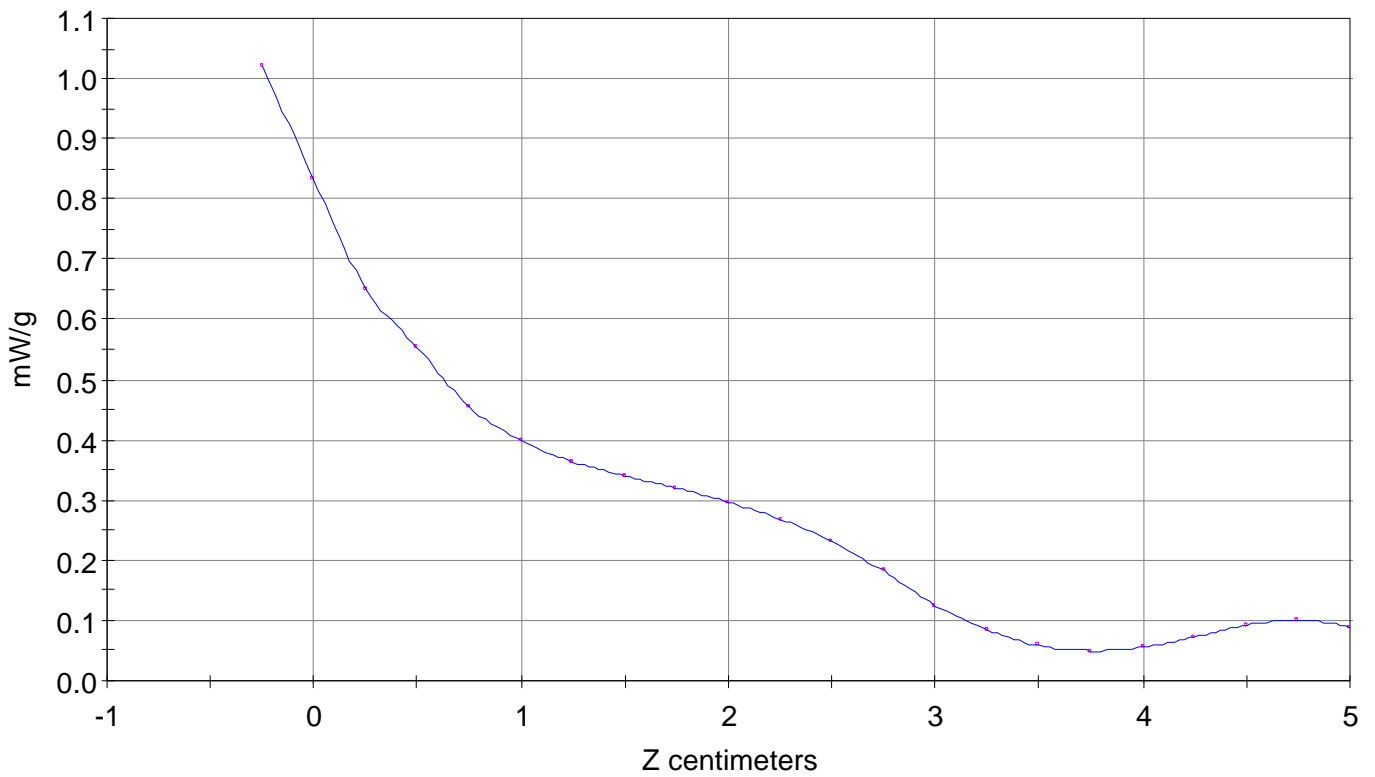
### SAR Scan

File : 01022721\_ZOOM

Start : 27-Feb-101 04:13:43 pm End : 27-Feb-101 04:21:01 pm

SANYO/C412SA/1;848.31MHz;W;Helical/In;

Body/Abdomen;ZOOM/SAR;PCTEST/E Field/0 DegreesMuscle/51.700/1.100

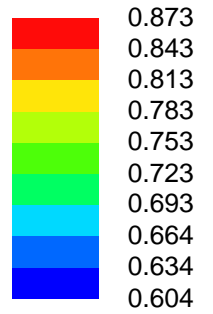
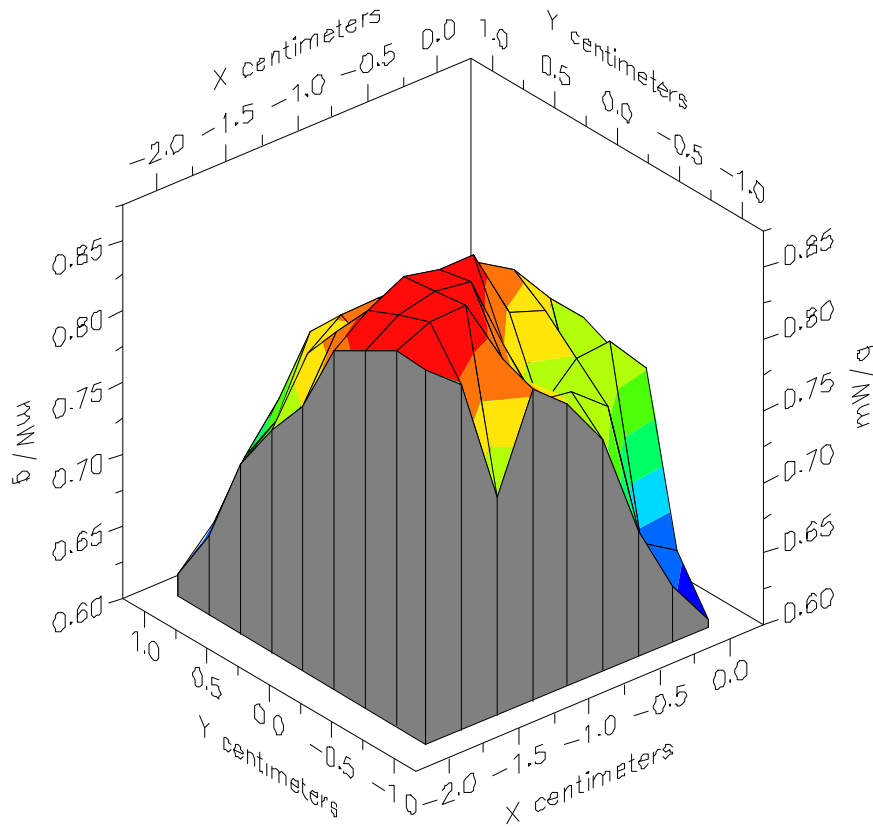


File : 01022721\_ZOOM

Start : 27-Feb-101 04:13:43 pm End : 27-Feb-101 04:21:01 pm

SANYO/C412SA/1;848.31MHz;W;Helical/In;

Body/Abdomen;ZOOM/SAR;PCTEST/E Field/0 DegreesMuscle/51.700/1.100

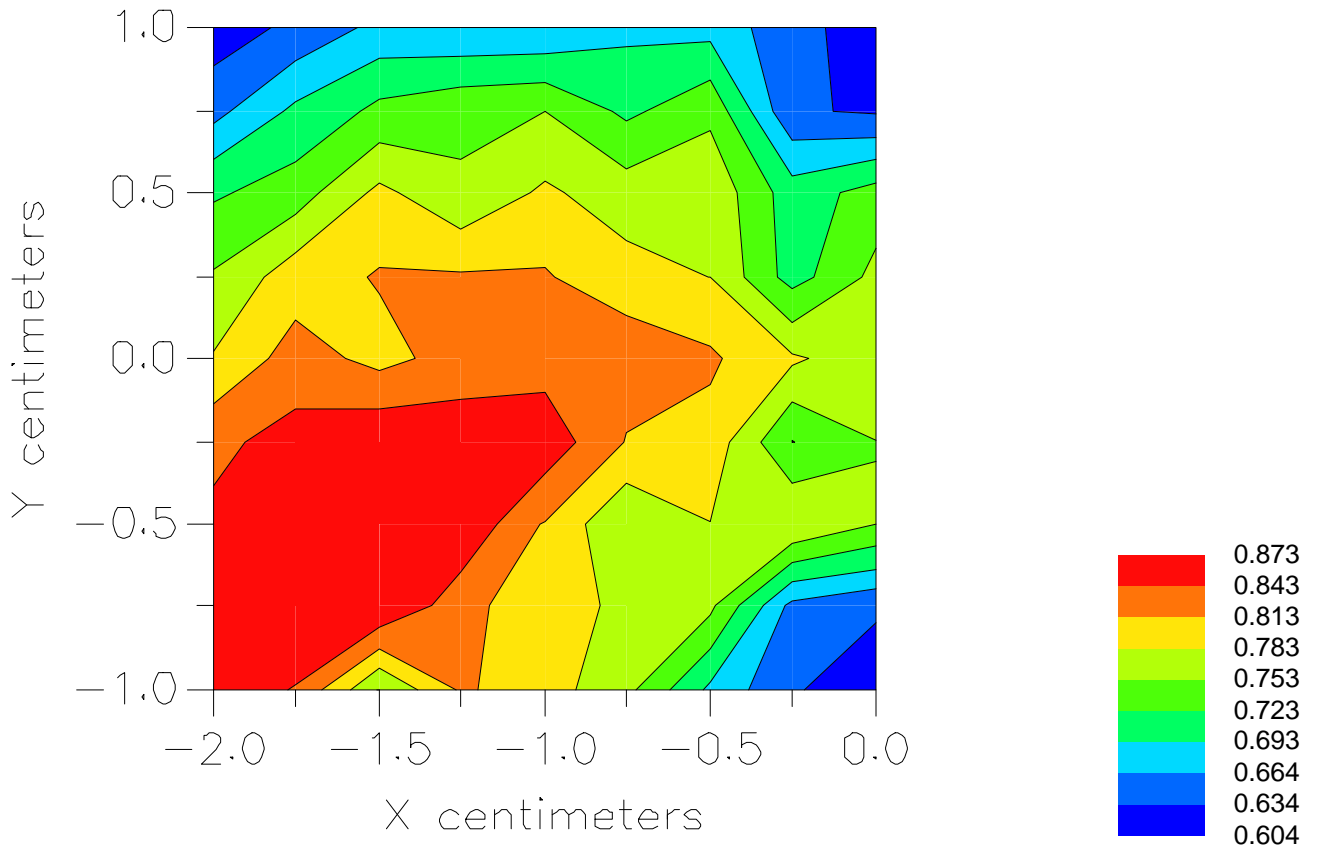


File : 01022721\_ZOOM

Start : 27-Feb-101 04:13:43 pm End : 27-Feb-101 04:21:01 pm

SANYO/C412SA/1;848.31MHz;W;Helical/In;

Body/Abdomen;ZOOM/SAR;PCTEST/E Field/0 DegreesMuscle/51.700/1.100



File : c:/idx3/SYSTEM/SARMEAS3/data/Normal/01022720\_ZOOM.VLT  
Start : 27-Feb-101 03:51:16 pm End : 27-Feb-101 03:58:32 pm

Radio Type : SANYO  
Model Number : C412SA  
Serial Number : 1  
Frequency : 848.31 MHz  
Peak Trans. Pwr : 0.240 W  
Start Trans. Pwr : 0.240 W  
Antenna Type : Helical  
Antenna Posn. : Out  
Phantom Type : Body  
Phantom Posn. : Abdomen  
Scan Type : ZOOM/SAR  
Probe Name : PCTEST  
Field Type : E Field  
Orientation : 0 Degrees

Mixture Type = Muscle  
Mixture Dielectric Constant = 51.700  
Mixture Conductivity = 1.100

Comment :  
SANYO CDMA-MODE PHONE - BODY SAR  
CHAN 0777 Conducted 23.8 dBm  
SANYO CDMA-MODE PHONE

Robot : PCTEST

Probe Offset = 0.25 cm  
Sensor Factor = 0.0108  
Conversion Factor = 0.894

PCTEST Amplifier Channel Settings : 0.166 0.135 0.132

Max Location : X = -1.750, Y = -0.250, Z = 0.000 (cm) Value = 15.318

Measured Values (volts) =  
1.454E-002 1.113E-002 9.285E-003 7.908E-003 6.806E-003 6.453E-003  
6.124E-003 6.011E-003 5.591E-003 4.994E-003 4.236E-003 3.236E-003  
2.375E-003 1.602E-003 1.045E-003 9.120E-004 1.109E-003 1.525E-003  
1.902E-003 2.134E-003 1.813E-003

Calc. Voltage @ Surface (Vs) = 0.0182

Voltage @ 1.00 cm (Vt) = 0.0079

Ave. Voltage (Vs+Vt)/2 = 0.0131

Ave. SAR over 1 g (mW/g) = 1.0814

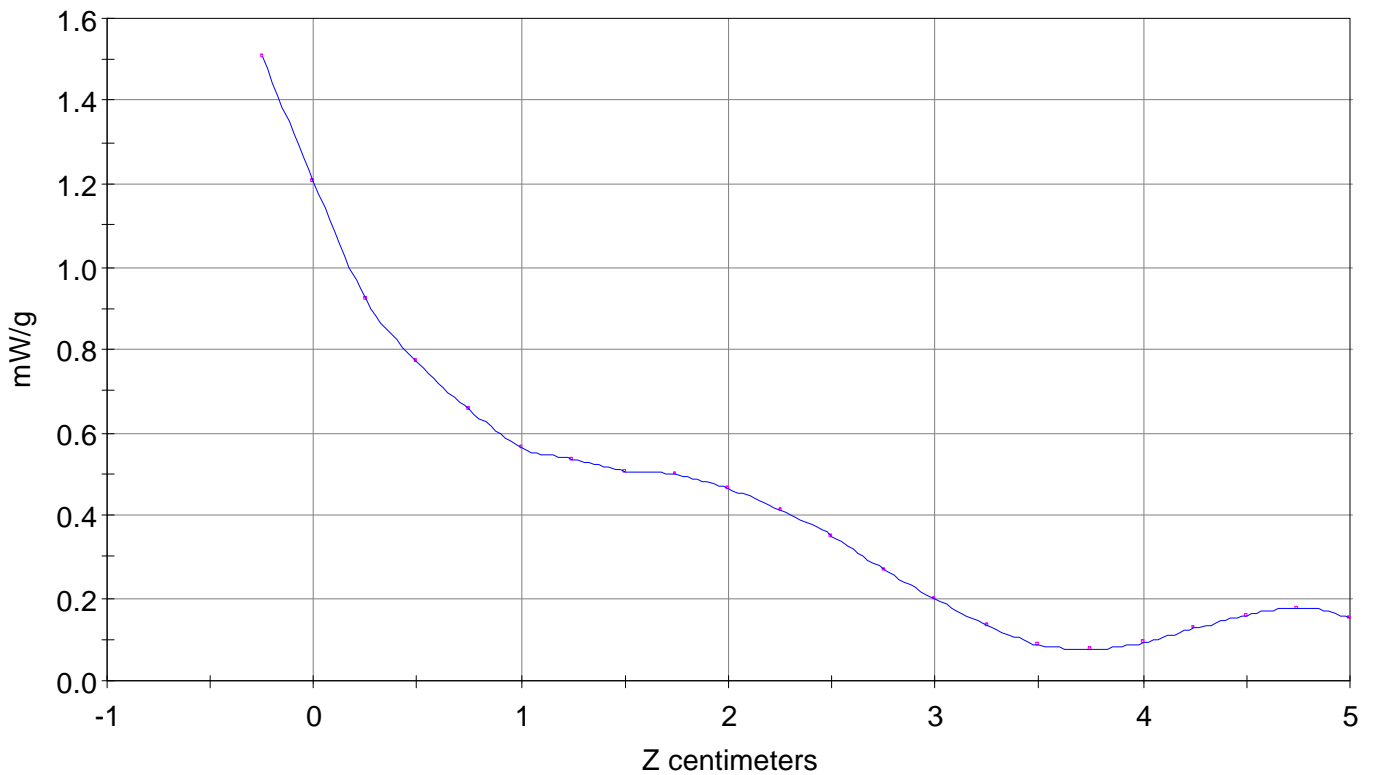
# SAR Scan

File : 01022720\_ZOOM

Start : 27-Feb-101 03:51:16 pm End : 27-Feb-101 03:58:32 pm

SANYO/C412SA/1;848.31MHz;W;Helical/Out;

Body/Abdomen;ZOOM/SAR;PCTEST/E Field/0 DegreesMuscle/51.700/1.100



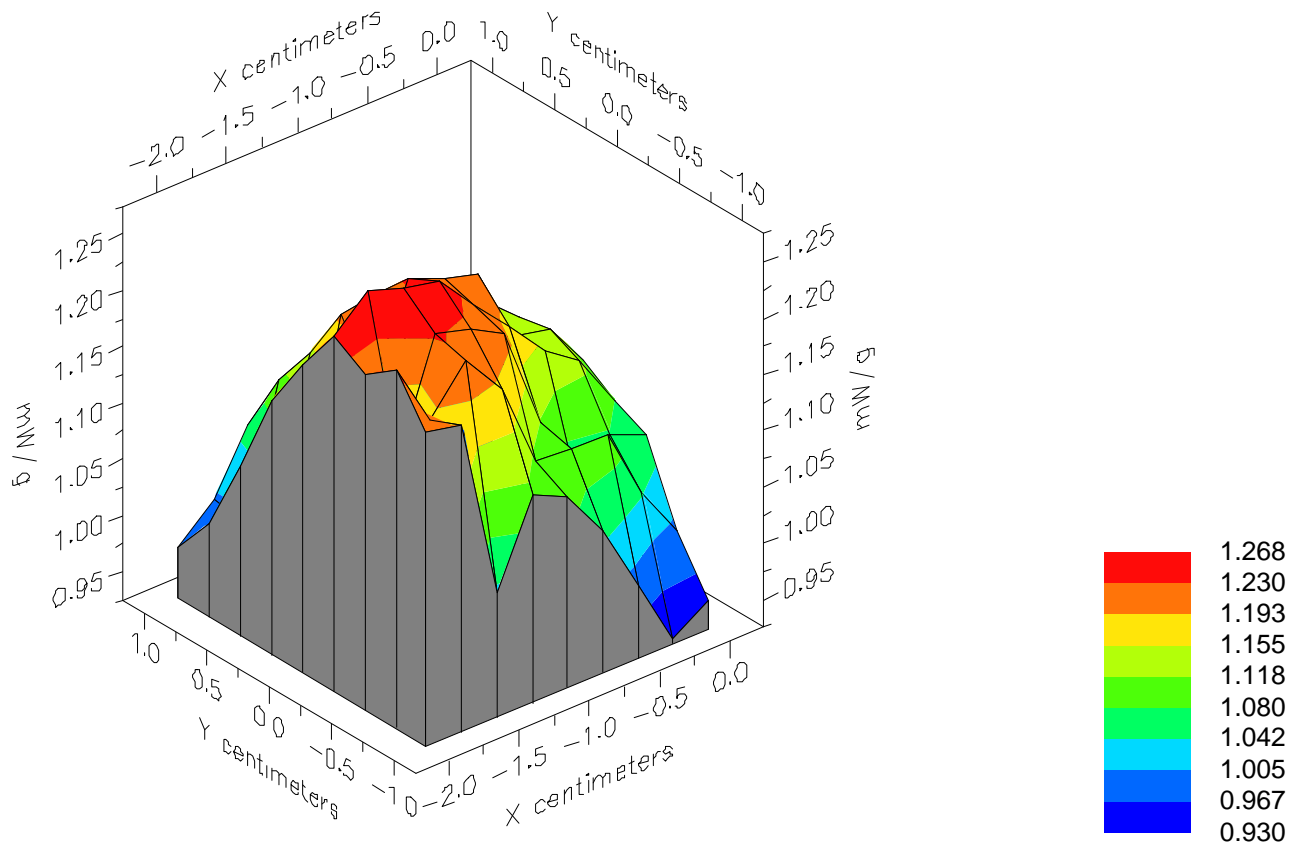


File : 01022720\_ZOOM

Start : 27-Feb-101 03:51:16 pm End : 27-Feb-101 03:58:32 pm

SANYO/C412SA/1;848.31MHz;W;Helical/Out;

Body/Abdomen;ZOOM/SAR;PCTEST/E Field/0 DegreesMuscle/51.700/1.100

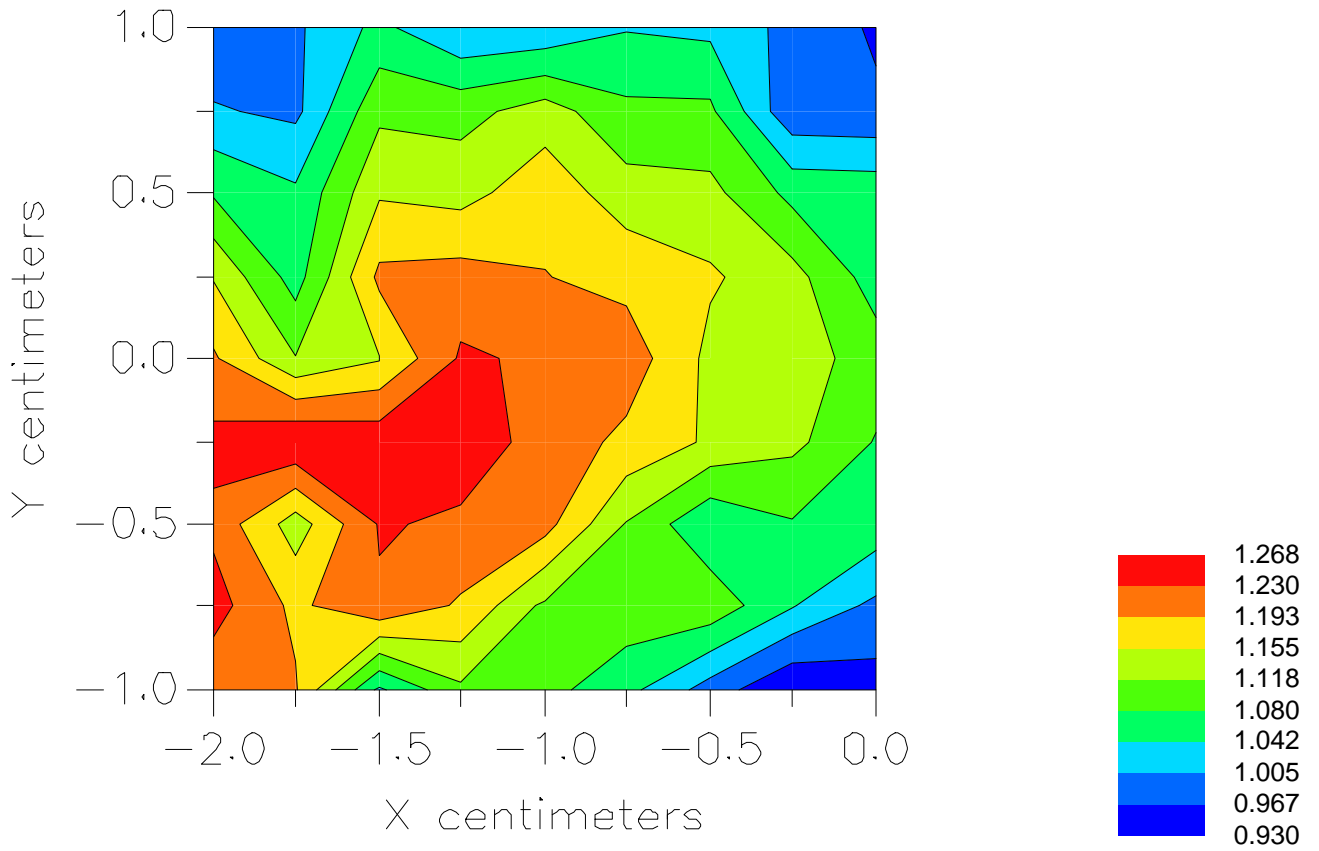


File : 01022720\_ZOOM

Start : 27-Feb-101 03:51:16 pm End : 27-Feb-101 03:58:32 pm

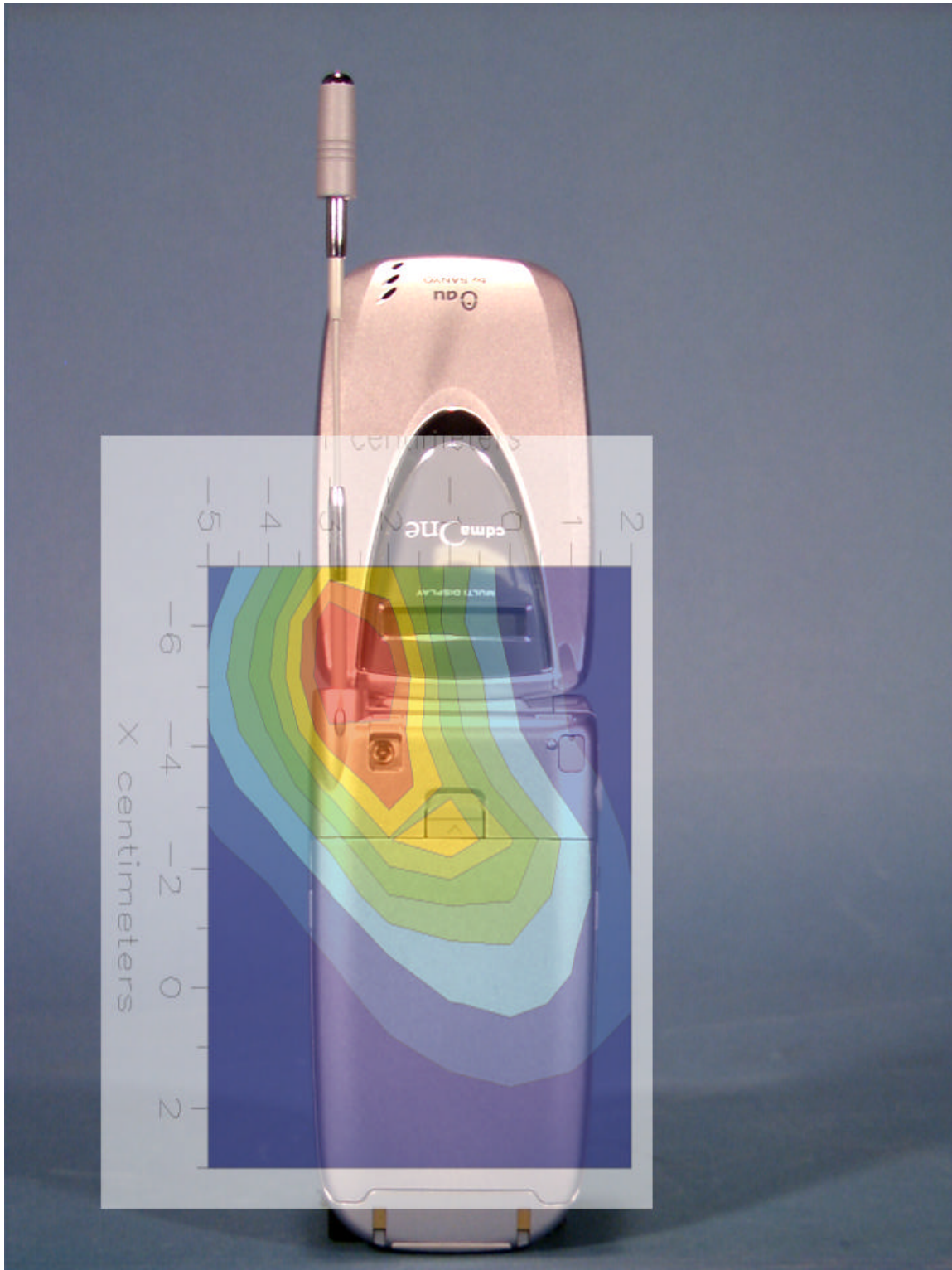
SANYO/C412SA/1;848.31MHz;W;Helical/Out;

Body/Abdomen;ZOOM/SAR;PCTEST/E Field/0 DegreesMuscle/51.700/1.100



# Peak SAR Location

## Hand SAR



File : c:/idx3/SYSTEM/SARMEAS3/data/Normal/01022724\_SAR.VLT  
Start : 27-Feb-101 05:37:49 pm End : 27-Feb-101 05:44:22 pm

Radio Type : SANYO  
Model Number : C412SA  
Serial Number : 1  
Frequency : 836.49 MHz  
Peak Trans. Pwr : 0.240 W  
Start Trans. Pwr: 0.240 W  
Antenna Type : Helical  
Antenna Posn. : In  
Phantom Type : Body  
Phantom Posn. : Abdomen  
Scan Type : ZOOM/SAR 10g  
Probe Name : PCTEST  
Field Type : E Field  
Orientation : 0 Degrees

Mixture Type = Muscle  
Mixture Dielectric Constant = 51.700  
Mixture Conductivity = 1.100

Comment :  
SANYO CDMA-MODE PHONE - HAND SAR  
CHAN 0383 Conducted 23.8 dBm  
SANYO CDMA-MODE PHONE

Robot : PCTEST

Probe Offset = 0.25 cm  
Sensor Factor = 0.0108  
Conversion Factor = 0.894

PCTEST Amplifier Channel Settings : 0.166 0.135 0.132

Max Location : X = -3.500, Y = -2.500, Z = 0.000 (cm) Value = 39.782

Ave. SAR over 10 g (mW/g) = 1.6999

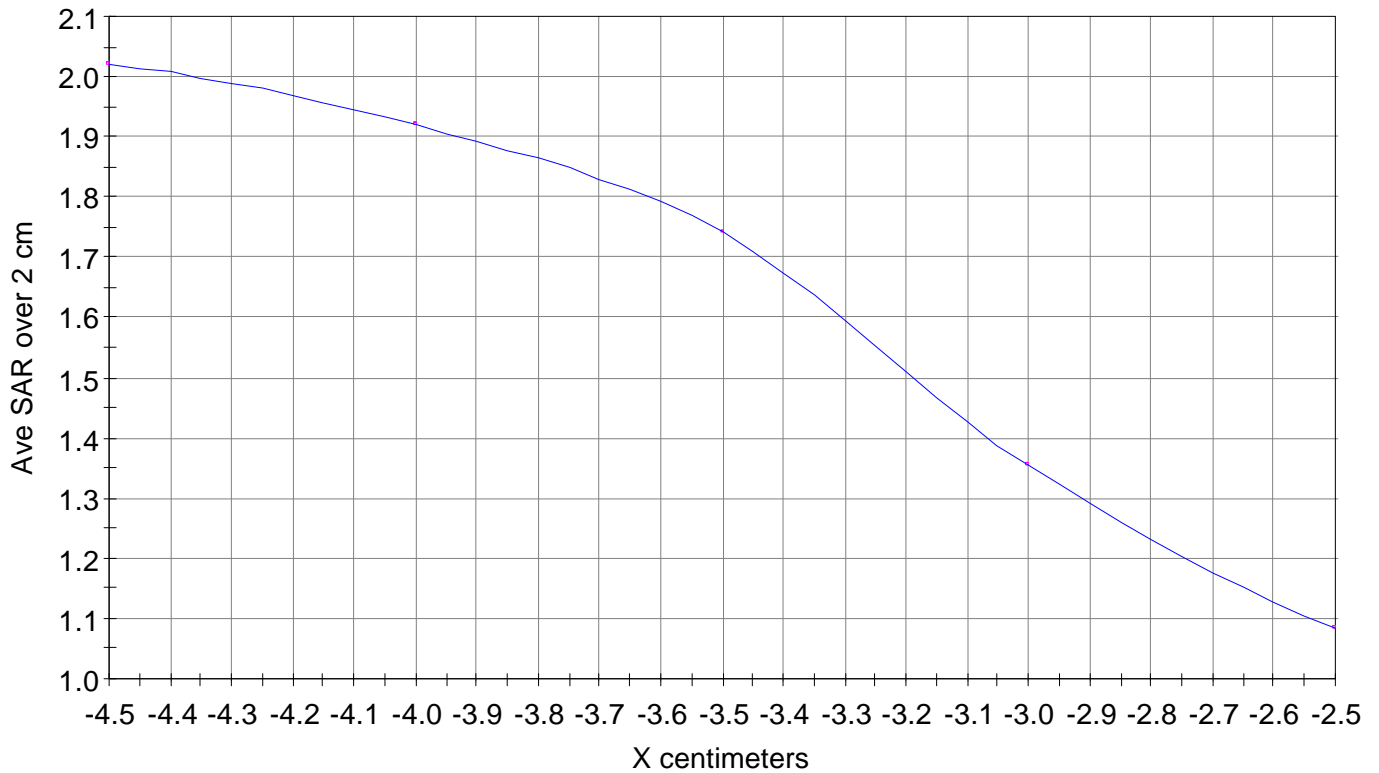
X-Z Plane Slice Y=-2.500

File : 01022724\_SAR

Start : 27-Feb-101 05:37:49 pm End : 27-Feb-101 05:44:22 pm

SANYO/C412SA/1;836.49MHz;W;Helical/In;

Body/Abdomen;ZOOM/SAR 10g;PCTEST/E Field/0 DegreesMuscle/51.700/1.100

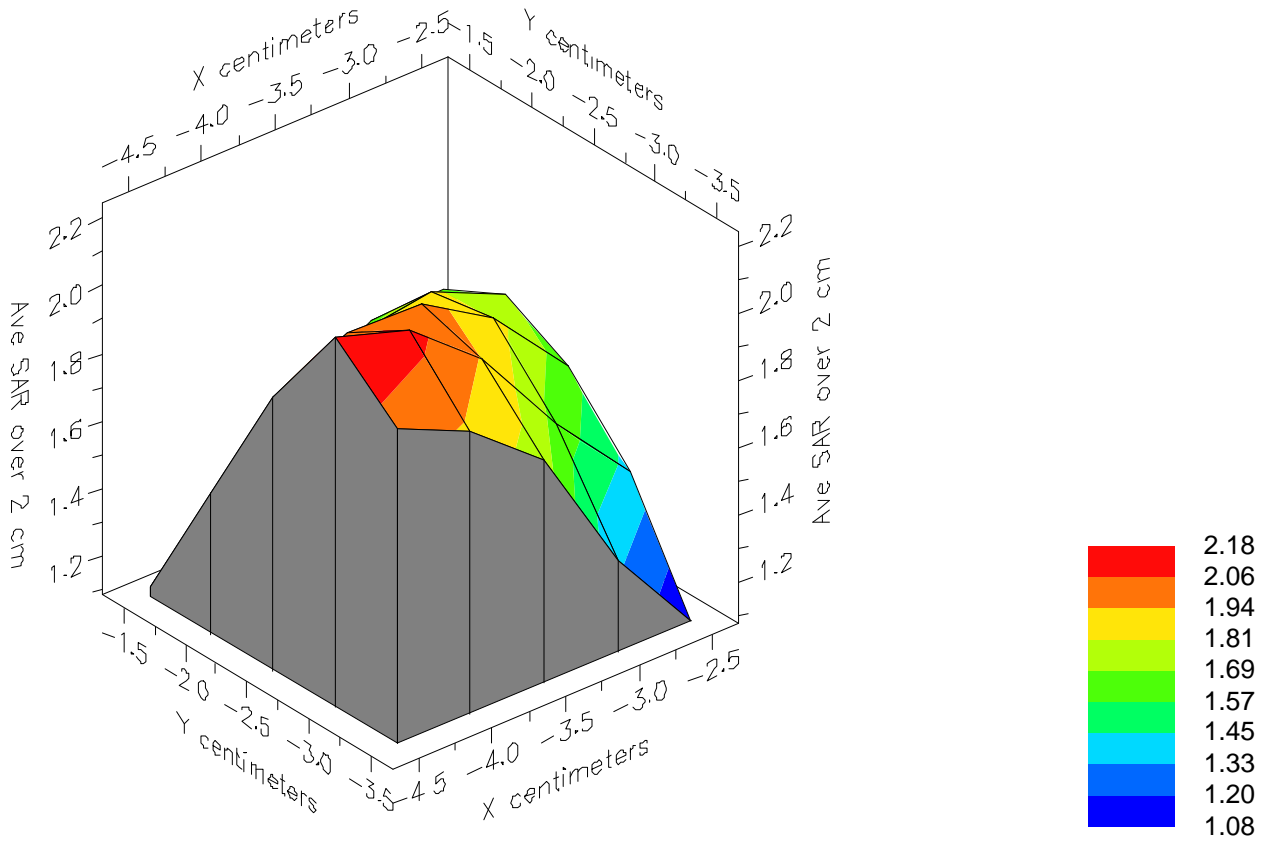


File : 01022724\_SAR

Start : 27-Feb-101 05:37:49 pm End : 27-Feb-101 05:44:22 pm

SANYO/C412SA/1;836.49MHz;W;Helical/In;

Body/Abdomen;ZOOM/SAR 10g;PCTEST/E Field/0 DegreesMuscle/51.700/1.100

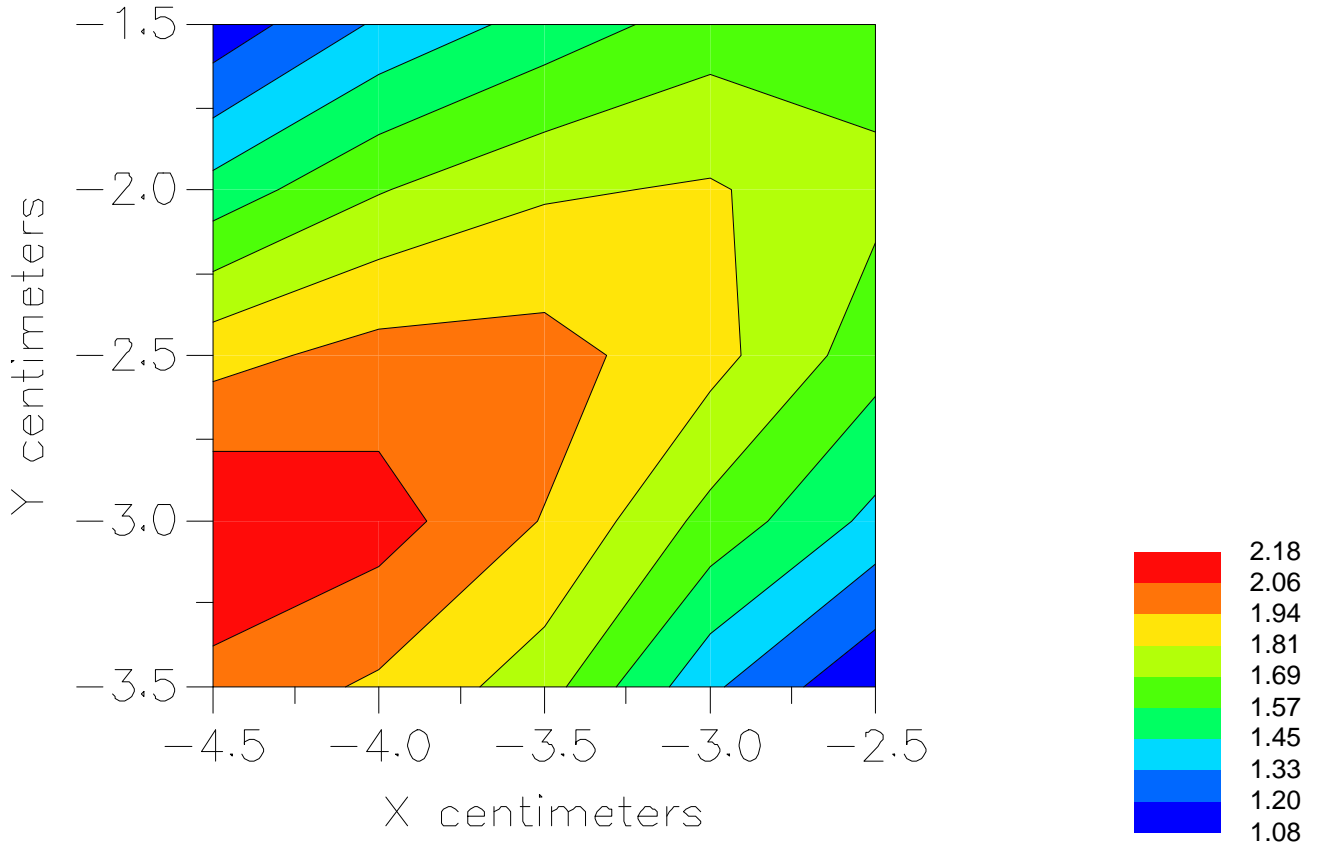


File : 01022724\_SAR

Start : 27-Feb-101 05:37:49 pm End : 27-Feb-101 05:44:22 pm

SANYO/C412SA/1;836.49MHz;W;Helical/In;

Body/Abdomen;ZOOM/SAR 10g;PCTEST/E Field/0 DegreesMuscle/51.700/1.100



File : c:/idx3/SYSTEM/SARMEAS3/data/Normal/01022723\_SAR.VLT  
Start : 27-Feb-101 05:10:05 pm End : 27-Feb-101 05:16:42 pm

Radio Type : SANYO  
Model Number : C412SA  
Serial Number : 1  
Frequency : 836.49 MHz  
Peak Trans. Pwr : 0.240 W  
Start Trans. Pwr: 0.240 W  
Antenna Type : Helical  
Antenna Posn. : Out  
Phantom Type : Body  
Phantom Posn. : Abdomen  
Scan Type : ZOOM/SAR 10g  
Probe Name : PCTEST  
Field Type : E Field  
Orientation : 0 Degrees

Mixture Type = Muscle  
Mixture Dielectric Constant = 51.700  
Mixture Conductivity = 1.100

Comment :  
SANYO CDMA-MODE PHONE - HAND SAR  
CHAN 0383 Conducted 23.8 dBm  
SANYO CDMA-MODE PHONE

Robot : PCTEST

Probe Offset = 0.25 cm  
Sensor Factor = 0.0108  
Conversion Factor = 0.894

PCTEST Amplifier Channel Settings : 0.166 0.135 0.132

Max Location : X = -5.500, Y = -3.000, Z = 0.000 (cm) Value = 56.412

Ave. SAR over 10 g (mW/g) = 2.1506



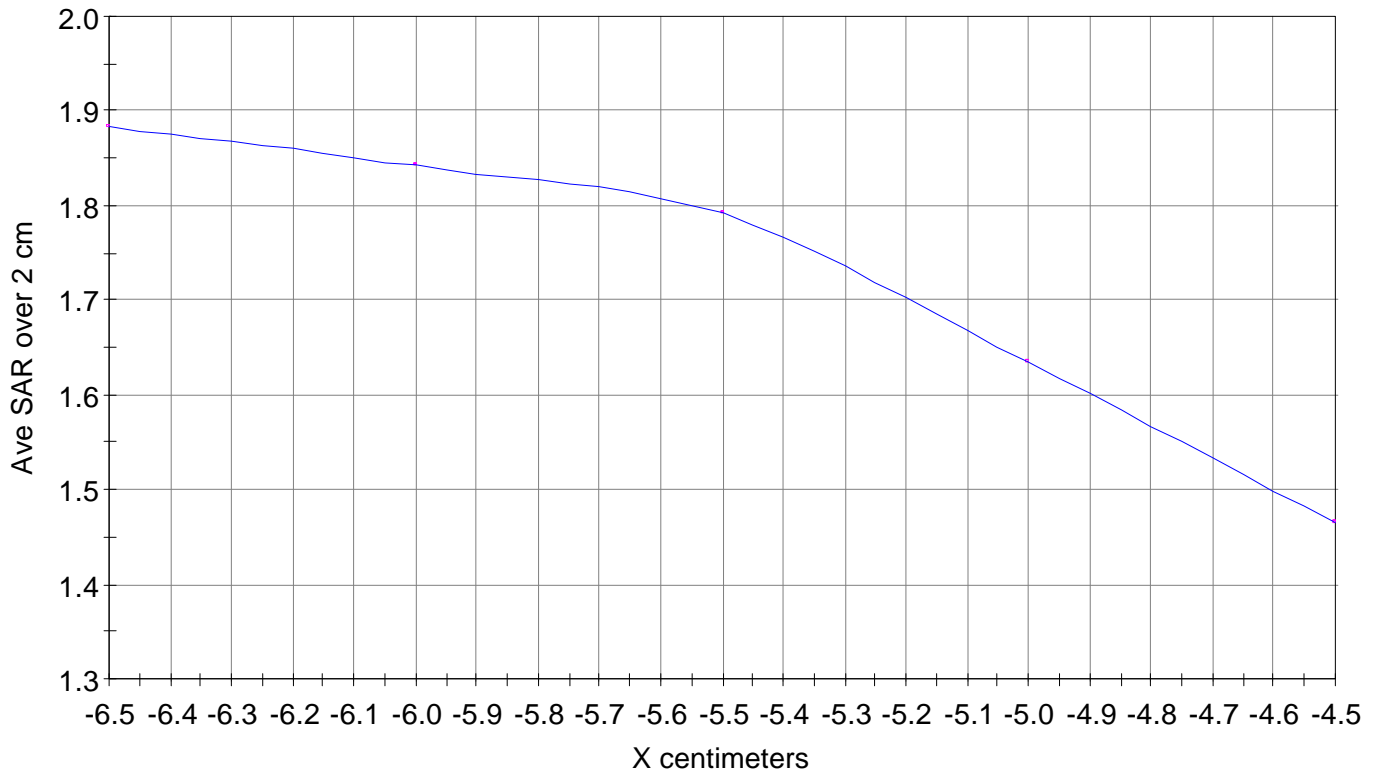
X-Z Plane Slice Y=-3.000

File : 01022723\_SAR

Start : 27-Feb-101 05:10:05 pm End : 27-Feb-101 05:16:42 pm

SANYO/C412SA/1;836.49MHz;W;Helical/Out;

Body/Abdomen;ZOOM/SAR 10g;PCTEST/E Field/0 DegreesMuscle/51.700/1.100

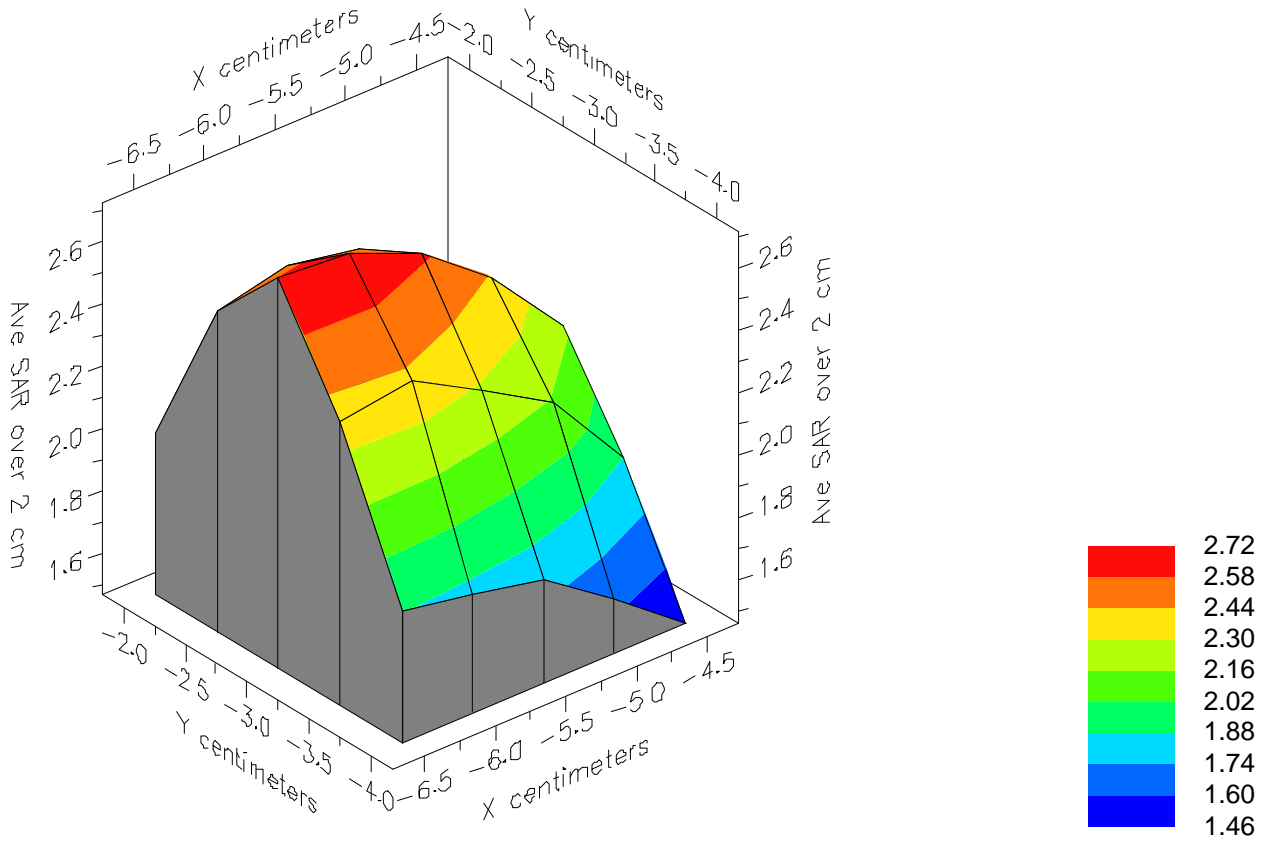


File : 01022723\_SAR

Start : 27-Feb-101 05:10:05 pm End : 27-Feb-101 05:16:42 pm

SANYO/C412SA/1;836.49MHz;W;Helical/Out;

Body/Abdomen;ZOOM/SAR 10g;PCTEST/E Field/0 DegreesMuscle/51.700/1.100



File : 01022723\_SAR

Start : 27-Feb-101 05:10:05 pm End : 27-Feb-101 05:16:42 pm

SANYO/C412SA/1;836.49MHz;W;Helical/Out;

Body/Abdomen;ZOOM/SAR 10g;PCTEST/E Field/0 DegreesMuscle/51.700/1.100

