

Peak SAR Location

Brain SAR



File : c:/idx3/SYSTEM/SARMEAS3/data/Normal/00112910_ZOOM.VLT
Start : 29-Nov-100 11:26:05 am End : 29-Nov-100 11:38:01 am

Radio Type : SANYO
Model Number : C401SA
Serial Number : 01
Frequency : 824.70 MHz
Peak Trans. Pwr : 0.260 W
Start Trans. Pwr : 0.260 W
Antenna Type : Helical
Antenna Posn. : In
Phantom Type : Head
Phantom Posn. : Left Ear
Scan Type : ZOOM/SAR
Probe Name : PCTEST
Field Type : E Field
Orientation : 0 Degrees

Mixture Type = Brain
Mixture Dielectric Constant = 41.500
Mixture Conductivity = 0.900

Comment :
SANYO CDMA MODE PHONE
CHAN 1013 Conducted 24.1 dBm
SANYO CDMA MODE PHONE

Robot : PCTEST

Probe Offset = 0.25 cm
Sensor Factor = 0.0108
Conversion Factor = 0.788

PCTEST Amplifier Channel Settings : 0.166 0.135 0.132

Max Location : X = 2.750, Y = -1.500, Z = 0.000 (cm) Value = 22.351

Measured Values (volts) =
2.234E-002 1.820E-002 1.550E-002 1.311E-002 1.114E-002 9.413E-003
7.893E-003 6.368E-003 5.356E-003 4.545E-003 3.996E-003 3.807E-003
3.775E-003 3.881E-003 3.918E-003 3.795E-003 3.316E-003 3.205E-003
4.194E-003 1.705E-003 1.476E-003

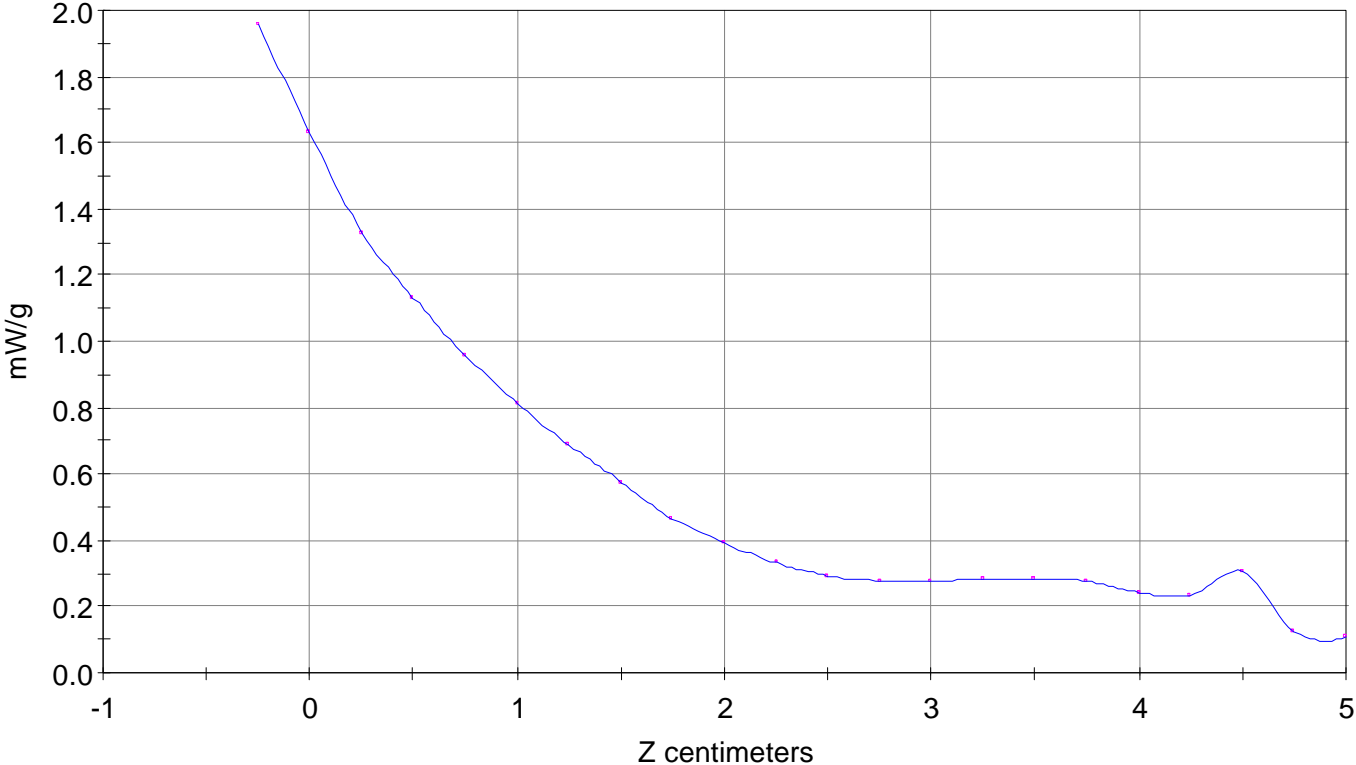
Calc. Voltage @ Surface (Vs) = 0.0268

Voltage @ 1.00 cm (Vt) = 0.0131

Ave. Voltage (Vs+Vt)/2 = 0.0200

Ave. SAR over 1 g (mW/g) = 1.4569

SAR Scan
File : 00112910_ZOOM
Start : 29-Nov-100 11:26:05 am End : 29-Nov-100 11:38:01 am
SANYO/C401SA/01;824.70MHz;W;Helical/In;
Head/Left Ear;ZOOM/SAR;PCTEST/E Field/0 DegreesBrain/41.500/0.900

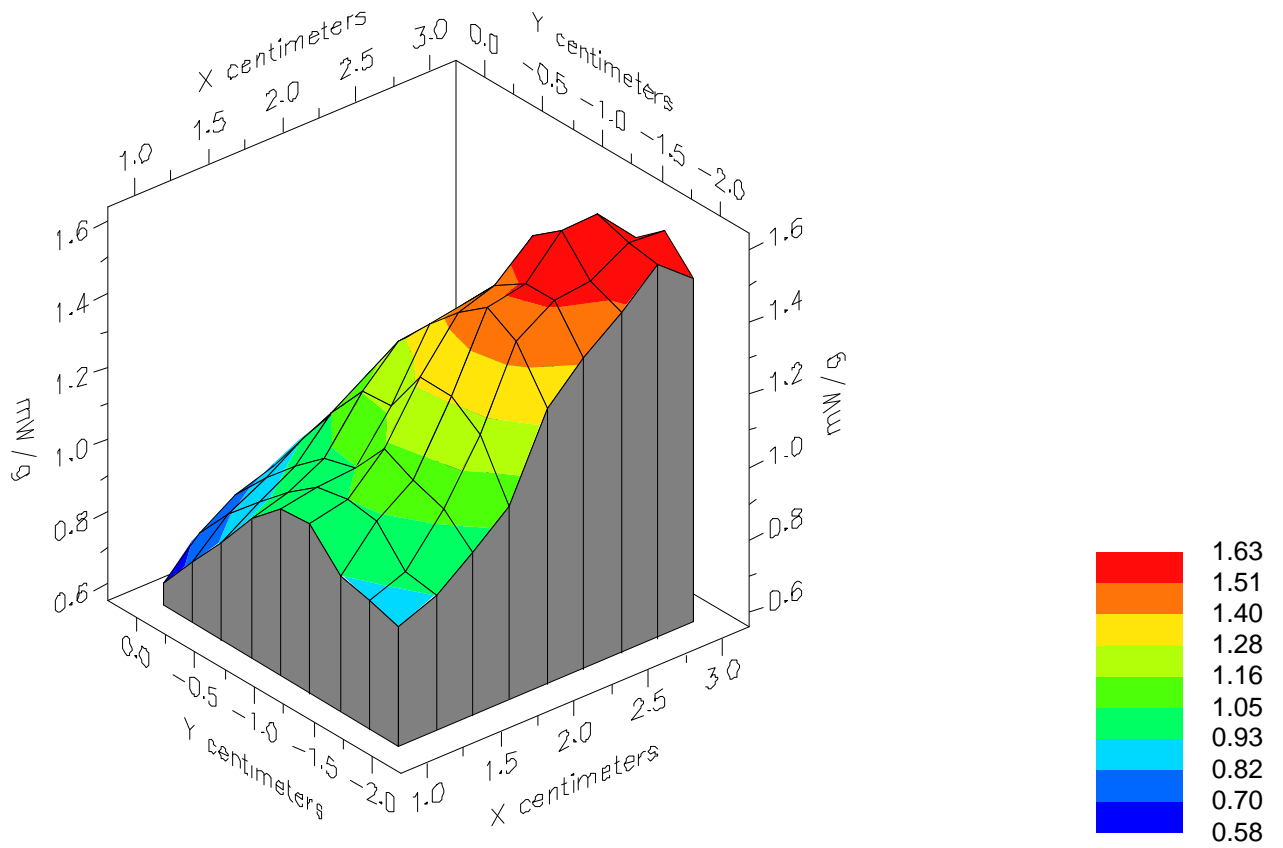


File : 00112910_ZOOM

Start : 29-Nov-100 11:26:05 am End : 29-Nov-100 11:38:01 am

SANYO/C401SA/01;824.70MHz;W;Helical/In;

Head/Left Ear;ZOOM/SAR;PCTEST/E Field/0 DegreesBrain/41.500/0.900

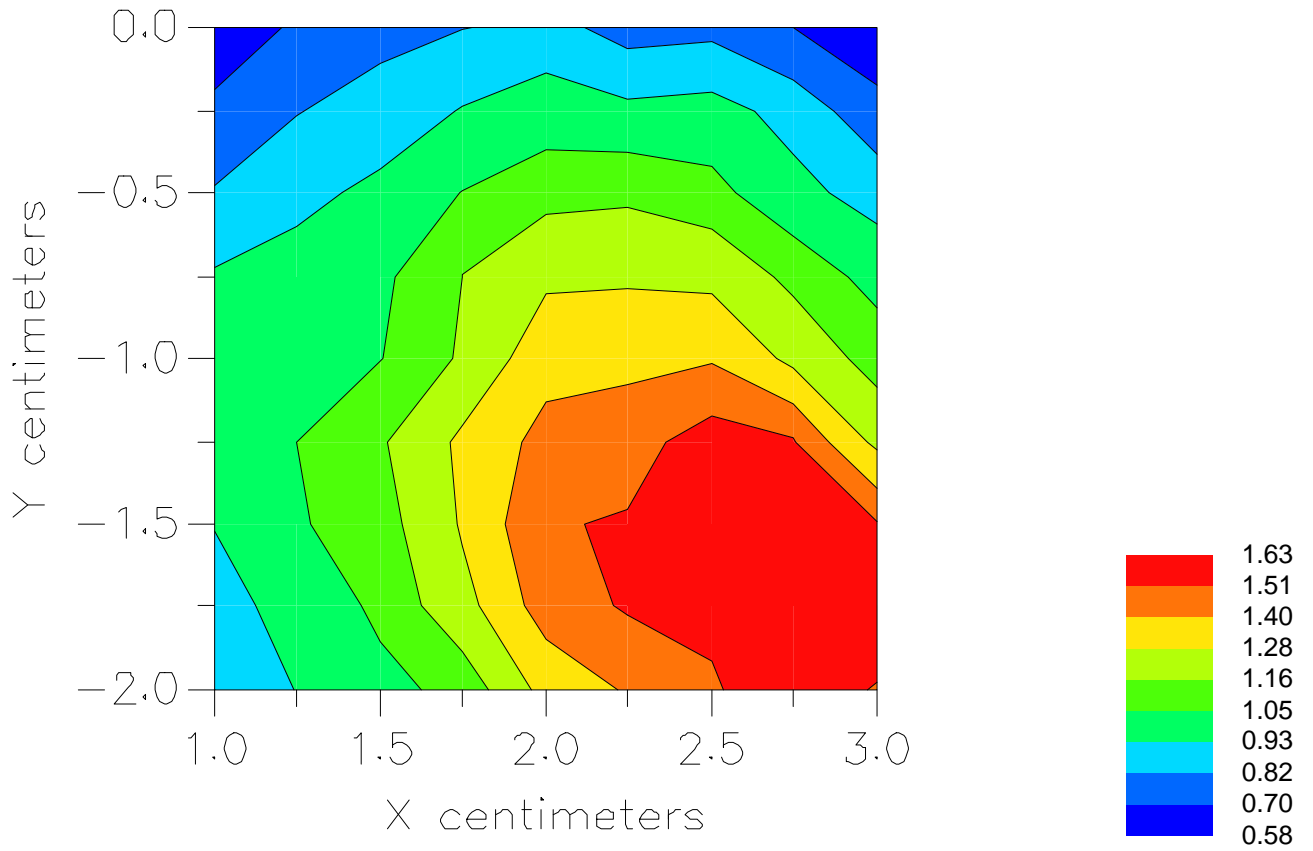


File : 00112910_ZOOM

Start : 29-Nov-100 11:26:05 am End : 29-Nov-100 11:38:01 am

SANYO/C401SA/01;824.70MHz;W;Helical/In;

Head/Left Ear;ZOOM/SAR;PCTEST/E Field/0 DegreesBrain/41.500/0.900



File : c:/idx3/SYSTEM/SARMEAS3/data/Normal/00112911_ZOOM.VLT
Start : 29-Nov-100 11:44:12 am End : 29-Nov-100 11:53:37 am

Radio Type : SANYO
Model Number : C401SA
Serial Number : 01
Frequency : 824.70 MHz
Peak Trans. Pwr : 0.260 W
Start Trans. Pwr : 0.260 W
Antenna Type : Helical
Antenna Posn. : Out
Phantom Type : Head
Phantom Posn. : Left Ear
Scan Type : ZOOM/SAR
Probe Name : PCTEST
Field Type : E Field
Orientation : 0 Degrees

Mixture Type = Brain
Mixture Dielectric Constant = 41.500
Mixture Conductivity = 0.900

Comment :
SANYO CDMA MODE PHONE
CHAN 1013 Conducted 24.1 dBm
SANYO CDMA MODE PHONE

Robot : PCTEST

Probe Offset = 0.25 cm
Sensor Factor = 0.0108
Conversion Factor = 0.788

PCTEST Amplifier Channel Settings : 0.166 0.135 0.132

Max Location : X = 3.000, Y = -1.750, Z = 0.000 (cm) Value = 19.493

Measured Values (volts) =
1.924E-002 1.695E-002 1.442E-002 1.198E-002 1.007E-002 8.384E-003
6.933E-003 5.806E-003 4.905E-003 4.338E-003 4.009E-003 3.884E-003
3.830E-003 3.920E-003 3.777E-003 3.344E-003 3.111E-003 4.204E-003
2.016E-003 1.733E-003 1.603E-003

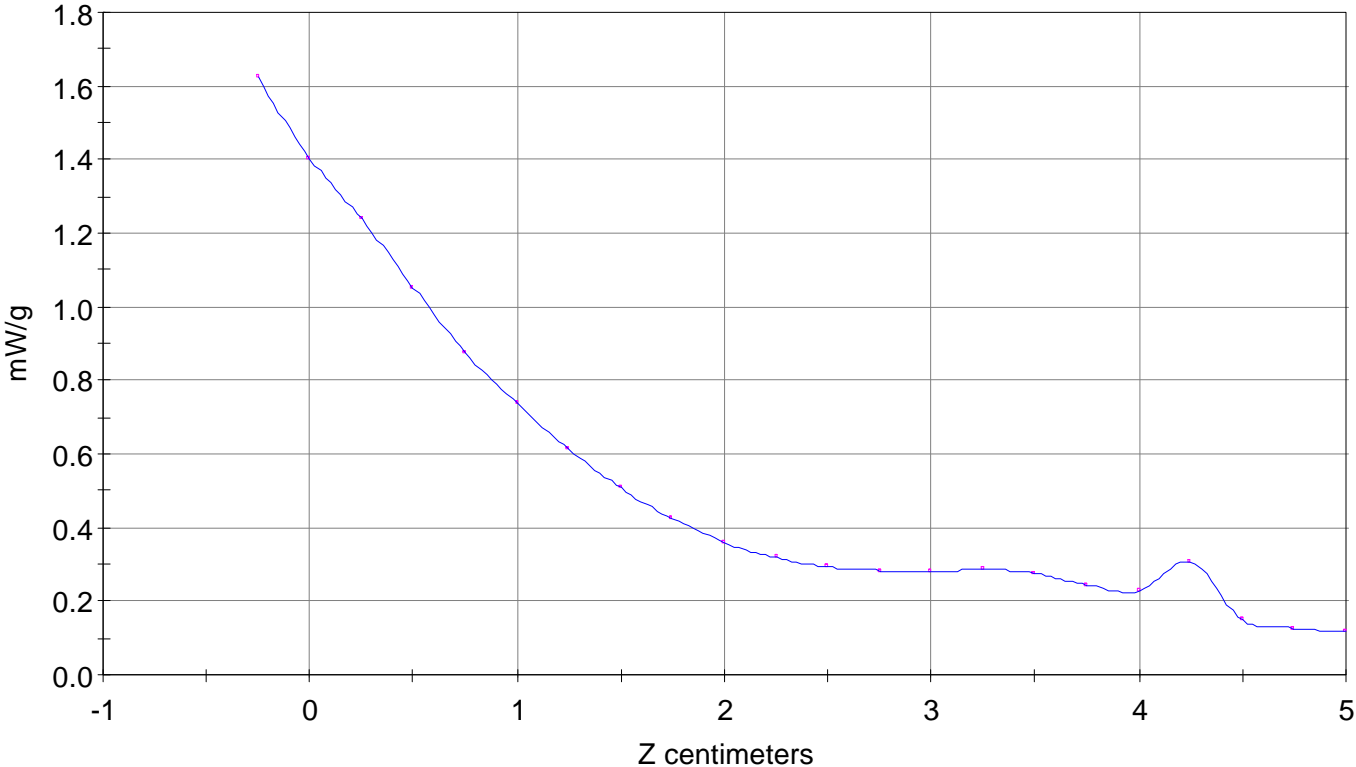
Calc. Voltage @ Surface (Vs) = 0.0222

Voltage @ 1.00 cm (Vt) = 0.0120

Ave. Voltage (Vs+Vt)/2 = 0.0171

Ave. SAR over 1 g (mW/g) = 1.2478

SAR Scan
File : 00112911_ZOOM
Start : 29-Nov-100 11:44:12 am End : 29-Nov-100 11:53:37 am
SANYO/C401SA/01;824.70MHz;W;Helical/Out;
Head/Left Ear;ZOOM/SAR;PCTEST/E Field/0 DegreesBrain/41.500/0.900

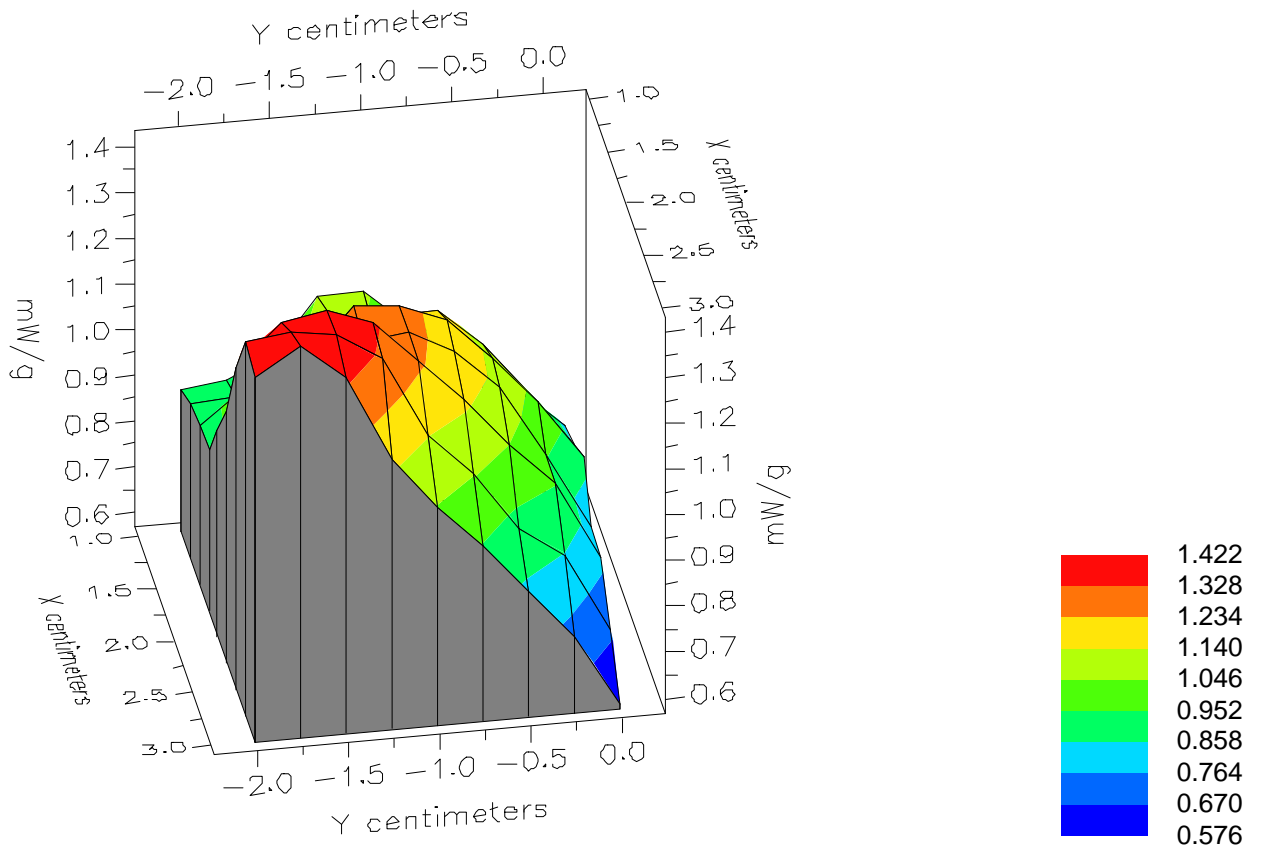


File : 00112911_ZOOM

Start : 29-Nov-100 11:44:12 am End : 29-Nov-100 11:53:37 am

SANYO/C401SA/01;824.70MHz;W;Helical/Out;

Head/Left Ear;ZOOM/SAR;PCTEST/E Field/0 DegreesBrain/41.500/0.900

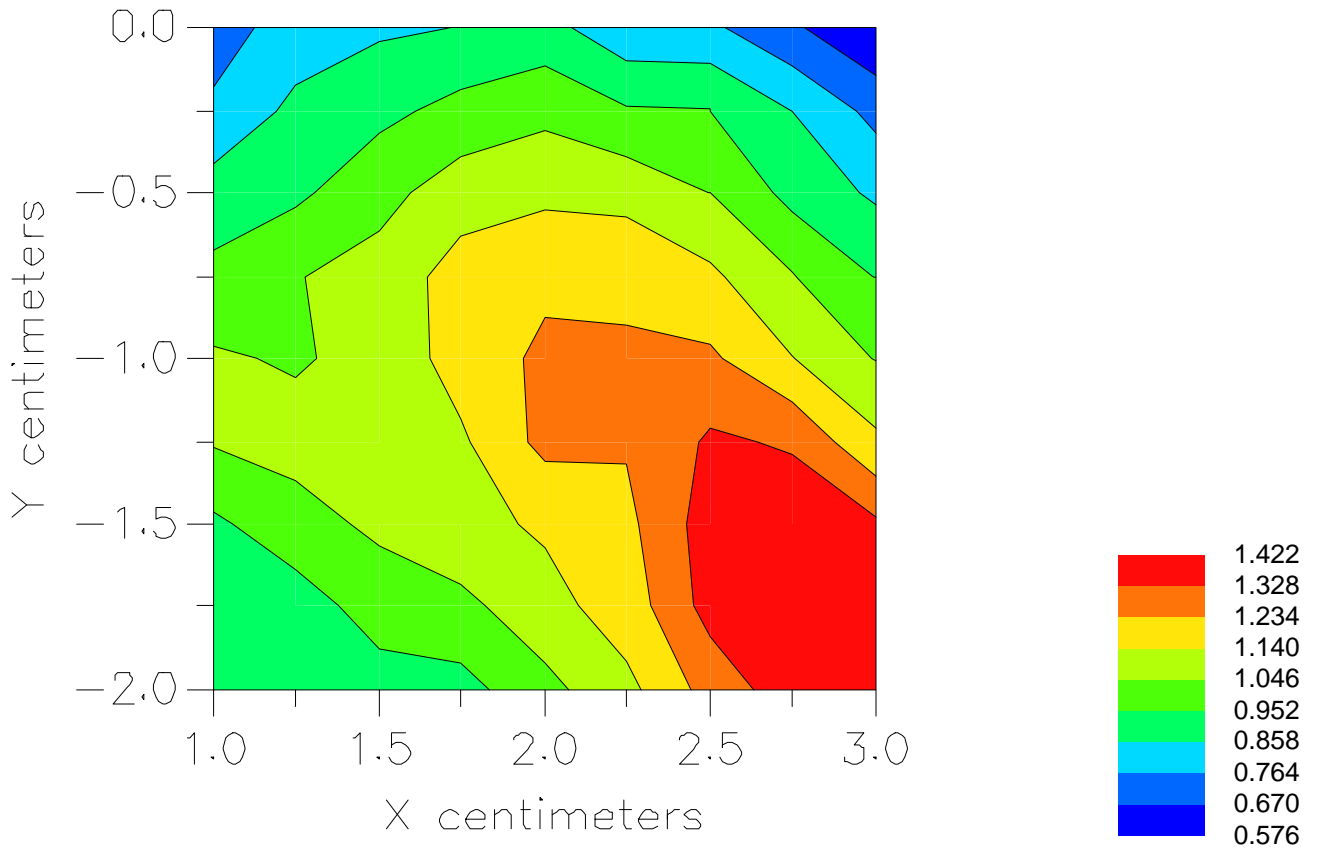


File : 00112911_ZOOM

Start : 29-Nov-100 11:44:12 am End : 29-Nov-100 11:53:37 am

SANYO/C401SA/01;824.70MHz;W;Helical/Out;

Head/Left Ear;ZOOM/SAR;PCTEST/E Field/0 DegreesBrain/41.500/0.900



File : c:/idx3/SYSTEM/SARMEAS3/data/Normal/00112904_ZOOM.VLT
Start : 29-Nov-100 09:52:08 am End : 29-Nov-100 10:03:52 am

Radio Type : SANYO
Model Number : C401SA
Serial Number : 01
Frequency : 836.49 MHz
Peak Trans. Pwr : 0.260 W
Start Trans. Pwr : 0.260 W
Antenna Type : Helical
Antenna Posn. : In
Phantom Type : Head
Phantom Posn. : Left Ear
Scan Type : ZOOM/SAR
Probe Name : PCTEST
Field Type : E Field
Orientation : 0 Degrees

Mixture Type = Brain
Mixture Dielectric Constant = 41.500
Mixture Conductivity = 0.900

Comment :
SANYO CDMA MODE PHONE
CHAN 0383 Conducted 24.1 dBm
SANYO CDMA MODE PHONE

Robot : PCTEST

Probe Offset = 0.25 cm
Sensor Factor = 0.0108
Conversion Factor = 0.788

PCTEST Amplifier Channel Settings : 0.166 0.135 0.132

Max Location : X = 1.500, Y = -1.000, Z = 0.000 (cm) Value = 21.792

Measured Values (volts) =
2.007E-002 1.712E-002 1.468E-002 1.281E-002 1.139E-002 9.404E-003
8.058E-003 6.618E-003 5.631E-003 4.776E-003 4.267E-003 4.016E-003
4.045E-003 4.178E-003 4.399E-003 4.458E-003 3.959E-003 3.288E-003
4.139E-003 4.410E-003 1.838E-003

Calc. Voltage @ Surface (Vs) = 0.0235

Voltage @ 1.00 cm (Vt) = 0.0128

Ave. Voltage (Vs+Vt)/2 = 0.0181

Ave. SAR over 1 g (mW/g) = 1.3233

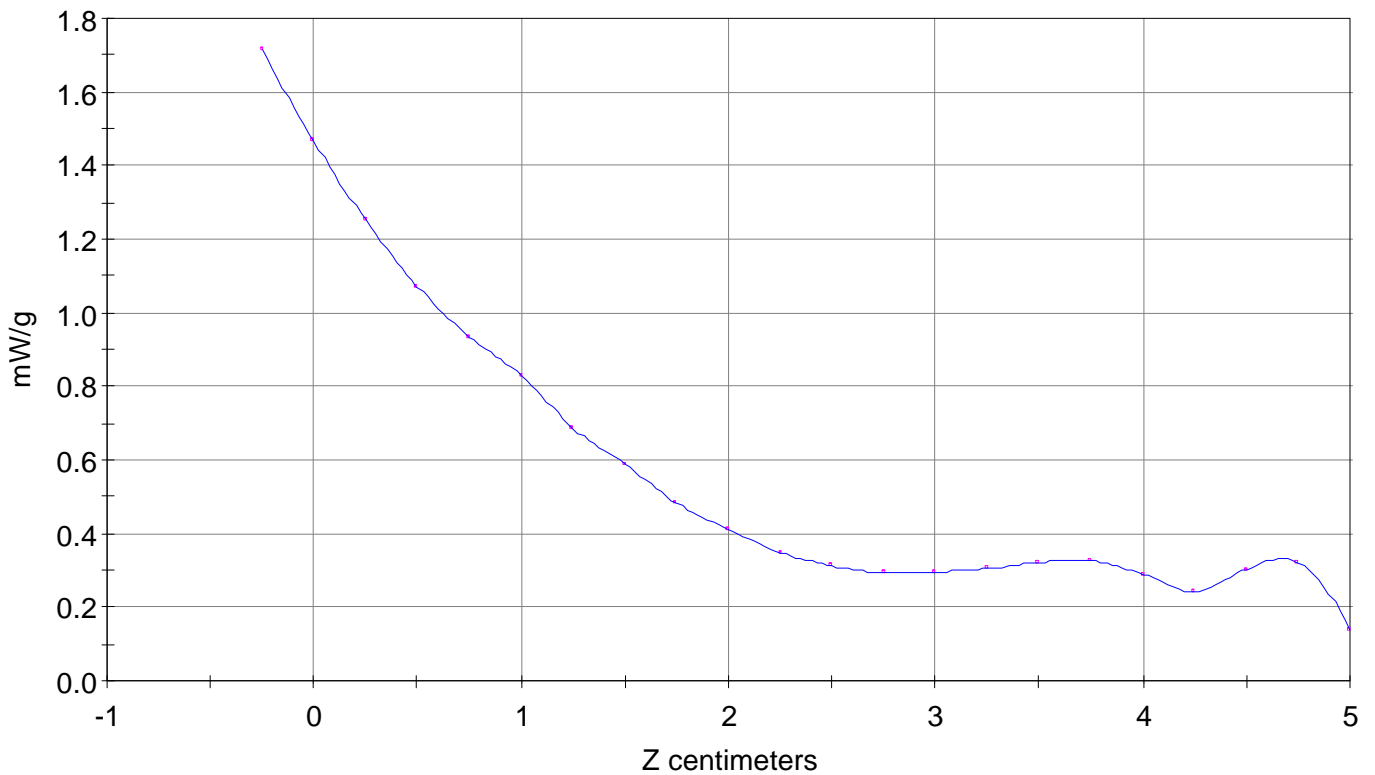
SAR Scan

File : 00112904_ZOOM

Start : 29-Nov-100 09:52:08 am End : 29-Nov-100 10:03:52 am

SANYO/C401SA/01;836.49MHz;W;Helical/In;

Head/Left Ear;ZOOM/SAR;PCTEST/E Field/0 DegreesBrain/41.500/0.900

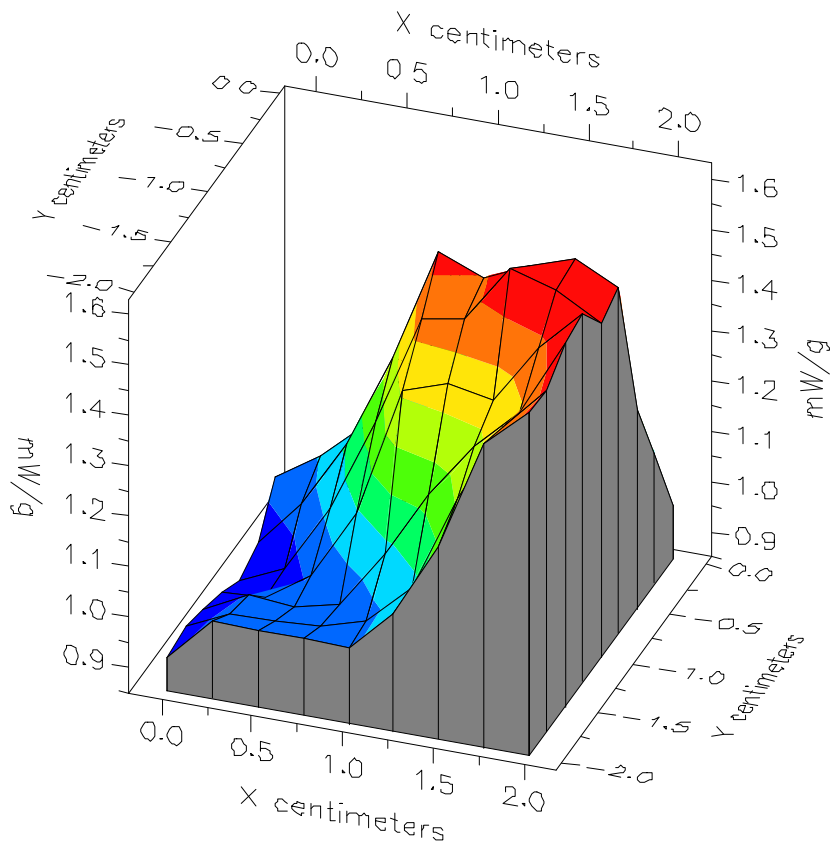


File : 00112904_ZOOM

Start : 29-Nov-100 09:52:08 am End : 29-Nov-100 10:03:52 am

SANYO/C401SA/01;836.49MHz;W;Helical/In;

Head/Left Ear;ZOOM/SAR;PCTEST/E Field/0 DegreesBrain/41.500/0.900

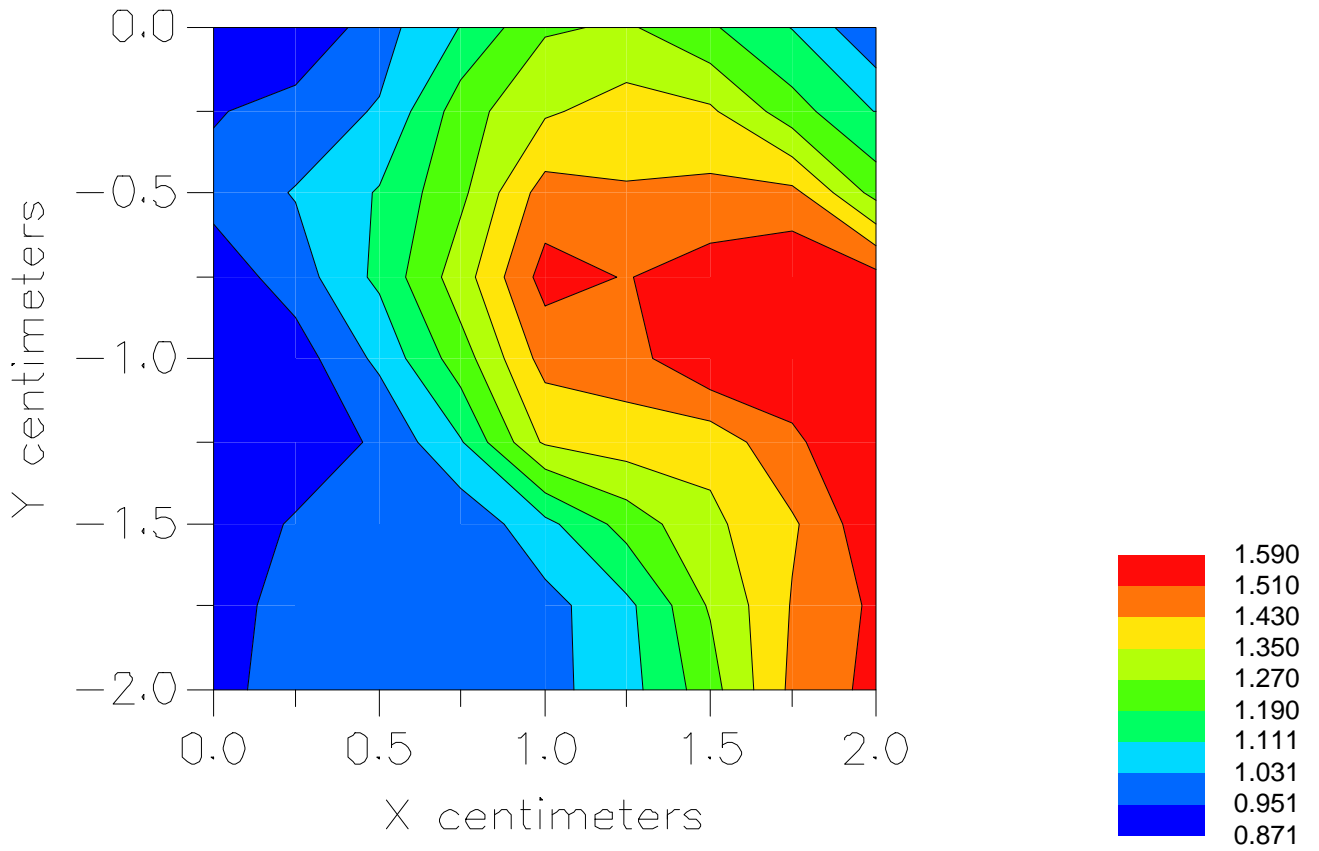


File : 00112904_ZOOM

Start : 29-Nov-100 09:52:08 am End : 29-Nov-100 10:03:52 am

SANYO/C401SA/01;836.49MHz;W;Helical/In;

Head/Left Ear;ZOOM/SAR;PCTEST/E Field/0 DegreesBrain/41.500/0.900



File : c:/idx3/SYSTEM/SARMEAS3/data/Normal/00112906_ZOOM.VLT
Start : 29-Nov-100 10:17:19 am End : 29-Nov-100 10:28:14 am

Radio Type : SANYO
Model Number : C401SA
Serial Number : 01
Frequency : 836.49 MHz
Peak Trans. Pwr : 0.260 W
Start Trans. Pwr : 0.260 W
Antenna Type : Helical
Antenna Posn. : Out
Phantom Type : Head
Phantom Posn. : Left Ear
Scan Type : ZOOM/SAR
Probe Name : PCTEST
Field Type : E Field
Orientation : 0 Degrees

Mixture Type = Brain
Mixture Dielectric Constant = 41.500
Mixture Conductivity = 0.900

Comment :
SANYO CDMA MODE PHONE
CHAN 0383 Conducted 24.1 dBm
SANYO CDMA MODE PHONE

Robot : PCTEST

Probe Offset = 0.25 cm
Sensor Factor = 0.0108
Conversion Factor = 0.788

PCTEST Amplifier Channel Settings : 0.166 0.135 0.132

Max Location : X = 3.000, Y = -2.000, Z = 0.000 (cm) Value = 19.562

Measured Values (volts) =
1.919E-002 1.757E-002 1.516E-002 1.321E-002 1.126E-002 9.738E-003
8.247E-003 6.932E-003 6.091E-003 5.362E-003 5.022E-003 4.729E-003
4.739E-003 4.818E-003 4.804E-003 4.471E-003 3.944E-003 4.640E-003
5.576E-003 2.840E-003 2.706E-003

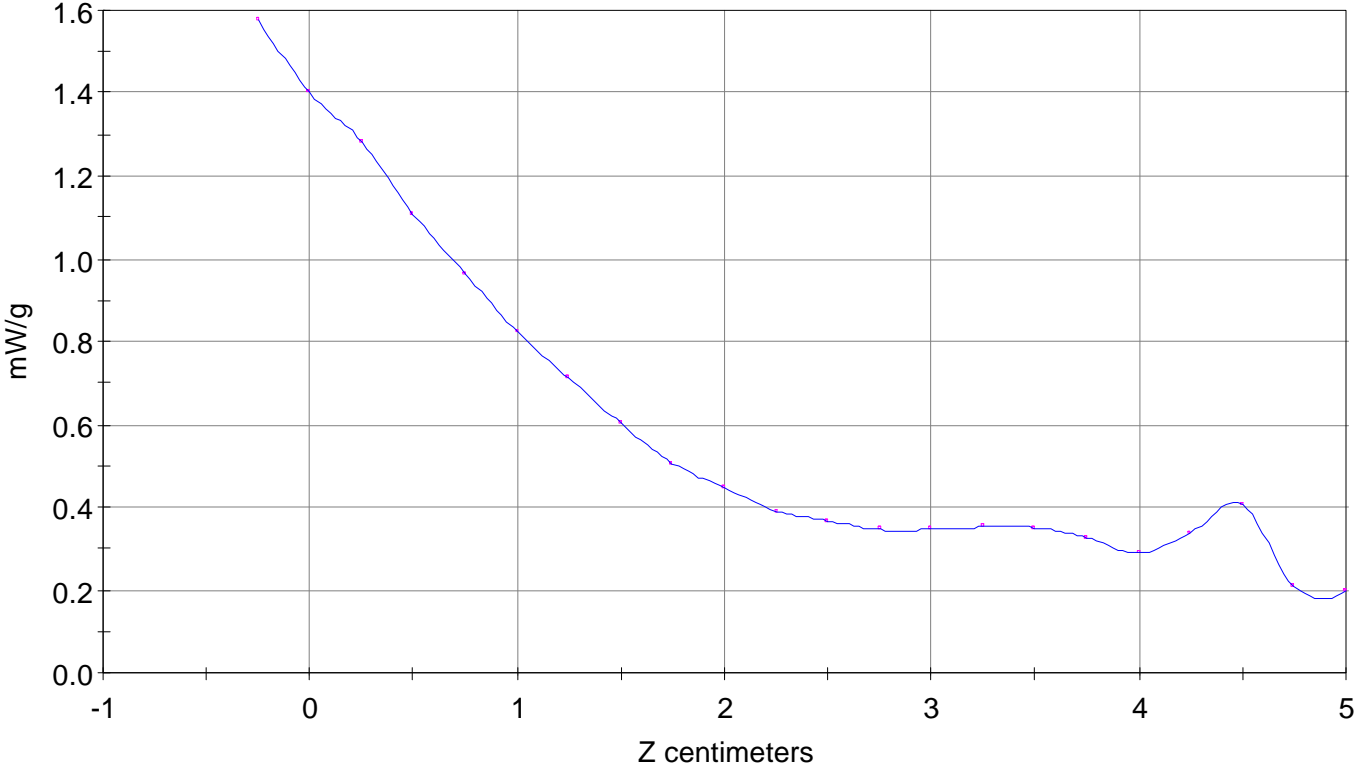
Calc. Voltage @ Surface (Vs) = 0.0216

Voltage @ 1.00 cm (Vt) = 0.0132

Ave. Voltage (Vs+Vt)/2 = 0.0174

Ave. SAR over 1 g (mW/g) = 1.2700

SAR Scan
File : 00112906_ZOOM
Start : 29-Nov-100 10:17:19 am End : 29-Nov-100 10:28:14 am
SANYO/C401SA/01;836.49MHz;W;Helical/Out;
Head/Left Ear;ZOOM/SAR;PCTEST/E Field/0 DegreesBrain/41.500/0.900

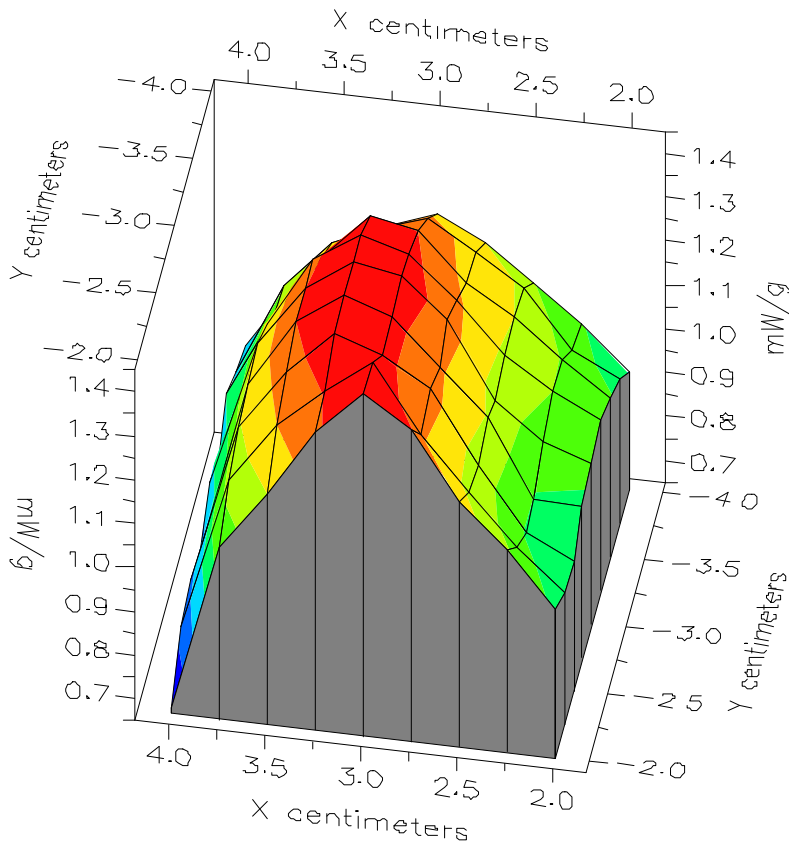


File : 00112906_ZOOM

Start : 29-Nov-100 10:17:19 am End : 29-Nov-100 10:28:14 am

SANYO/C401SA/01;836.49MHz;W;Helical/Out;

Head/Left Ear;ZOOM/SAR;PCTEST/E Field/0 DegreesBrain/41.500/0.900

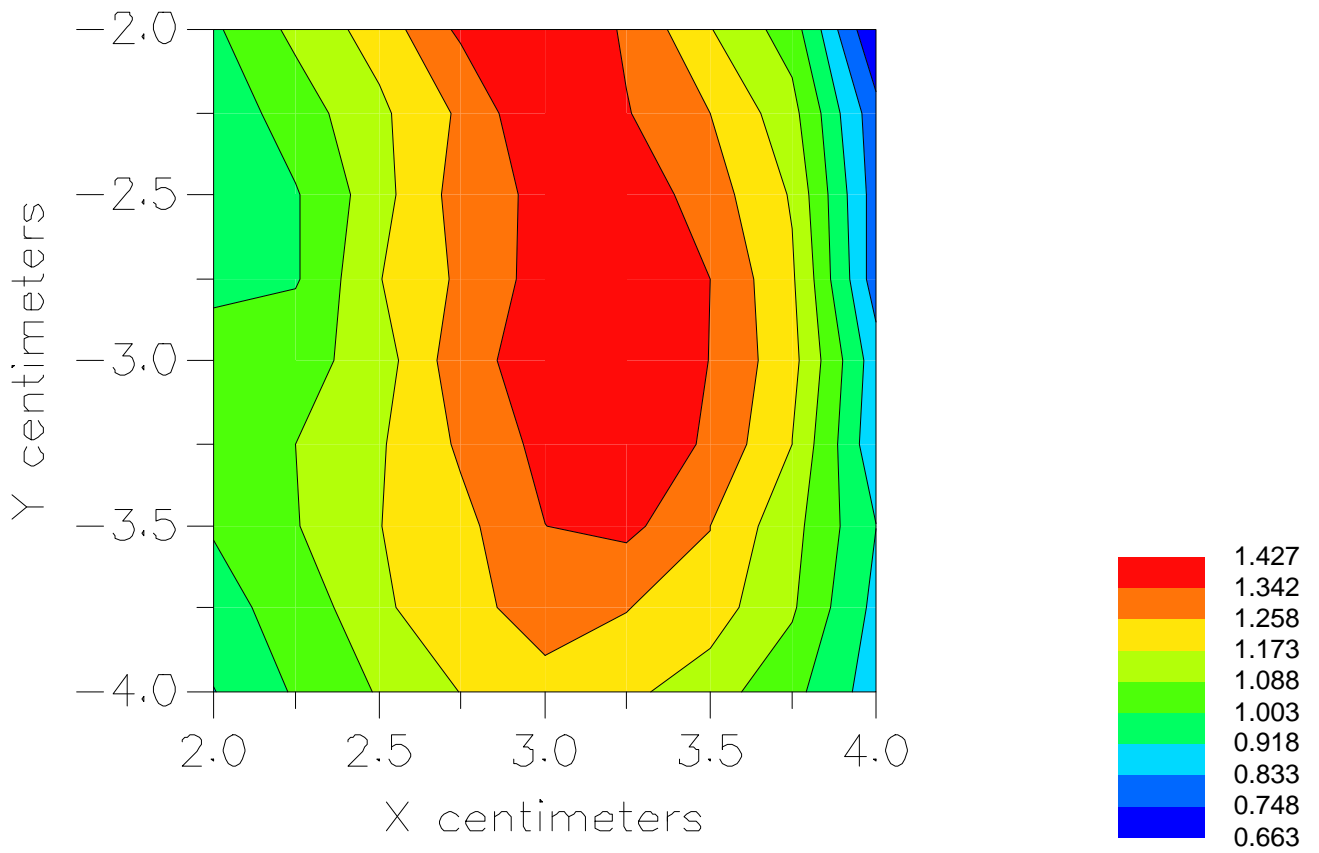


File : 00112906_ZOOM

Start : 29-Nov-100 10:17:19 am End : 29-Nov-100 10:28:14 am

SANYO/C401SA/01;836.49MHz;W;Helical/Out;

Head/Left Ear;ZOOM/SAR;PCTEST/E Field/0 DegreesBrain/41.500/0.900



File : c:/idx3/SYSTEM/SARMEAS3/data/Normal/00112908_ZOOM.VLT
Start : 29-Nov-100 10:41:08 am End : 29-Nov-100 10:50:38 am

Radio Type : SANYO
Model Number : C401SA
Serial Number : 01
Frequency : 848.31 MHz
Peak Trans. Pwr : 0.260 W
Start Trans. Pwr: 0.260 W
Antenna Type : Helical
Antenna Posn. : In
Phantom Type : Head
Phantom Posn. : Left Ear
Scan Type : ZOOM/SAR
Probe Name : PCTEST
Field Type : E Field
Orientation : 0 Degrees

Mixture Type = Brain
Mixture Dielectric Constant = 41.500
Mixture Conductivity = 0.900

Comment :
SANYO CDMA MODE PHONE
CHAN 0777 Conducted 24.1 dBm
SANYO CDMA MODE PHONE

Robot : PCTEST

Probe Offset = 0.25 cm
Sensor Factor = 0.0108
Conversion Factor = 0.788

PCTEST Amplifier Channel Settings : 0.166 0.135 0.132

Max Location : X = 3.250, Y = -2.750, Z = 0.000 (cm) Value = 22.052

Measured Values (volts) =
2.197E-002 2.040E-002 1.710E-002 1.414E-002 1.196E-002 9.575E-003
8.080E-003 6.761E-003 6.001E-003 5.703E-003 5.624E-003 5.724E-003
5.820E-003 5.601E-003 5.071E-003 4.404E-003 5.073E-003 2.918E-003
2.677E-003 2.522E-003 2.394E-003

Calc. Voltage @ Surface (Vs) = 0.0249

Voltage @ 1.00 cm (Vt) = 0.0141

Ave. Voltage (Vs+Vt)/2 = 0.0195

Ave. SAR over 1 g (mW/g) = 1.4257

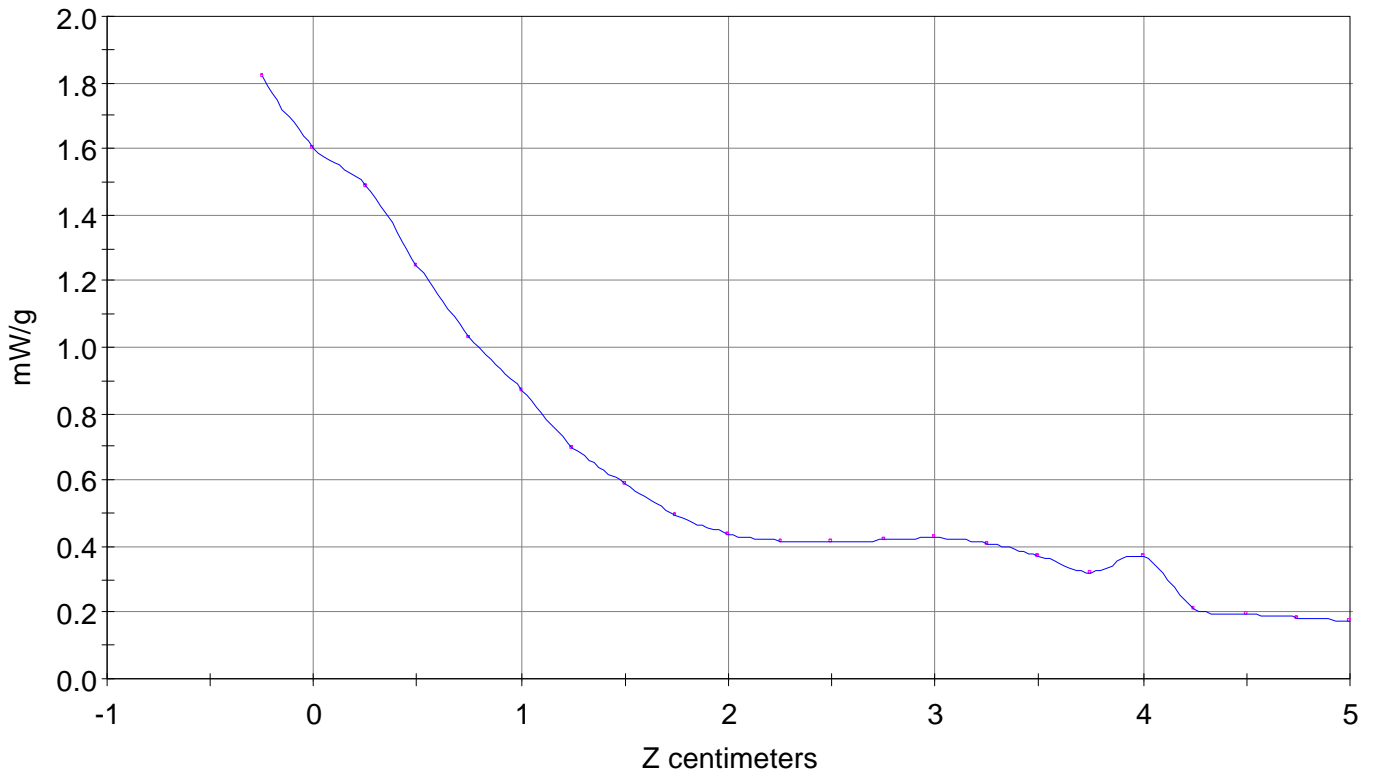
SAR Scan

File : 00112908_ZOOM

Start : 29-Nov-100 10:41:08 am End : 29-Nov-100 10:50:38 am

SANYO/C401SA/01;848.31MHz;W;Helical/In;

Head/Left Ear;ZOOM/SAR;PCTEST/E Field/0 DegreesBrain/41.500/0.900

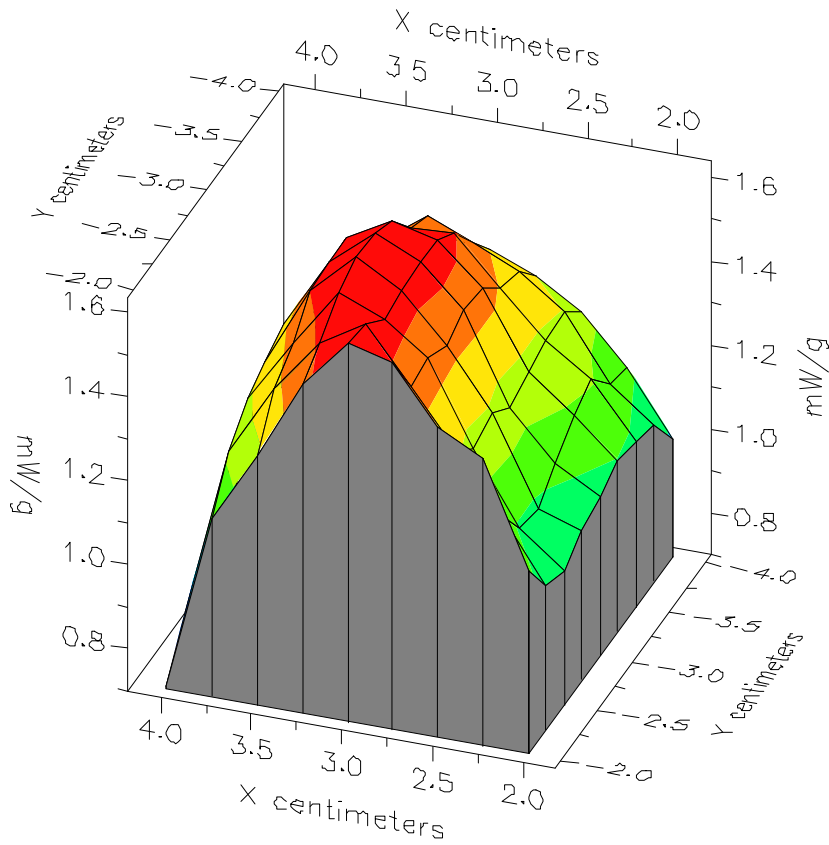


File : 00112908_ZOOM

Start : 29-Nov-100 10:41:08 am End : 29-Nov-100 10:50:38 am

SANYO/C401SA/01;848.31MHz;W;Helical/In;

Head/Left Ear;ZOOM/SAR;PCTEST/E Field/0 DegreesBrain/41.500/0.900

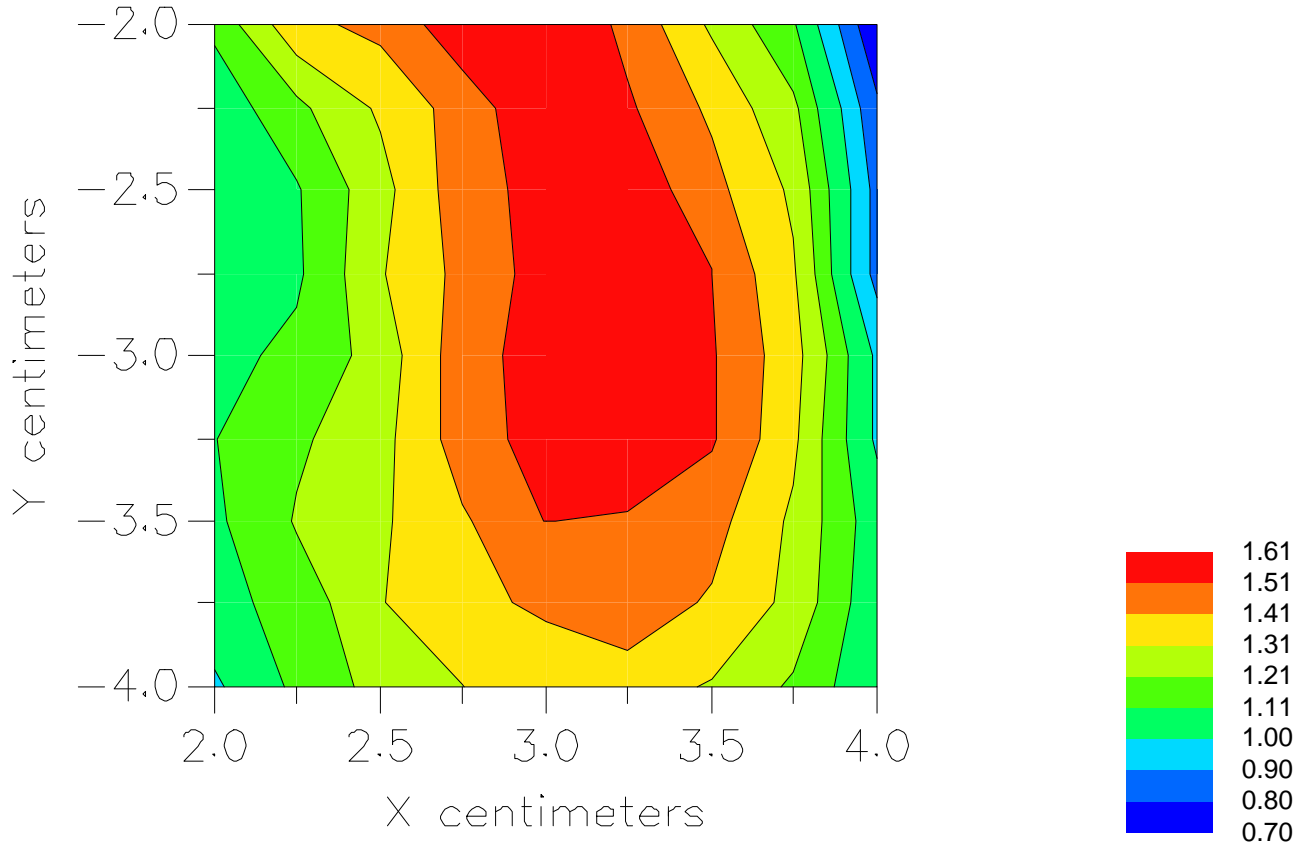


File : 00112908_ZOOM

Start : 29-Nov-100 10:41:08 am End : 29-Nov-100 10:50:38 am

SANYO/C401SA/01;848.31MHz;W;Helical/In;

Head/Left Ear;ZOOM/SAR;PCTEST/E Field/0 DegreesBrain/41.500/0.900



File : c:/idx3/SYSTEM/SARMEAS3/data/Normal/00112909_ZOOM.VLT
Start : 29-Nov-100 11:04:11 am End : 29-Nov-100 11:15:03 am

Radio Type : SANYO
Model Number : C401SA
Serial Number : 01
Frequency : 848.31 MHz
Peak Trans. Pwr : 0.260 W
Start Trans. Pwr : 0.260 W
Antenna Type : Helical
Antenna Posn. : Out
Phantom Type : Head
Phantom Posn. : Left Ear
Scan Type : ZOOM/SAR
Probe Name : PCTEST
Field Type : E Field
Orientation : 0 Degrees

Mixture Type = Brain
Mixture Dielectric Constant = 41.500
Mixture Conductivity = 0.900

Comment :
SANYO CDMA MODE PHONE
CHAN 0777 Conducted 24.1 dBm
SANYO CDMA MODE PHONE

Robot : PCTEST

Probe Offset = 0.25 cm
Sensor Factor = 0.0108
Conversion Factor = 0.788

PCTEST Amplifier Channel Settings : 0.166 0.135 0.132

Max Location : X = 3.000, Y = -2.750, Z = 0.000 (cm) Value = 19.532

Measured Values (volts) =
1.934E-002 1.873E-002 1.611E-002 1.346E-002 1.120E-002 9.356E-003
7.777E-003 6.546E-003 5.746E-003 5.236E-003 5.143E-003 5.071E-003
5.419E-003 5.450E-003 5.142E-003 4.343E-003 4.694E-003 5.631E-003
2.772E-003 2.573E-003 2.415E-003

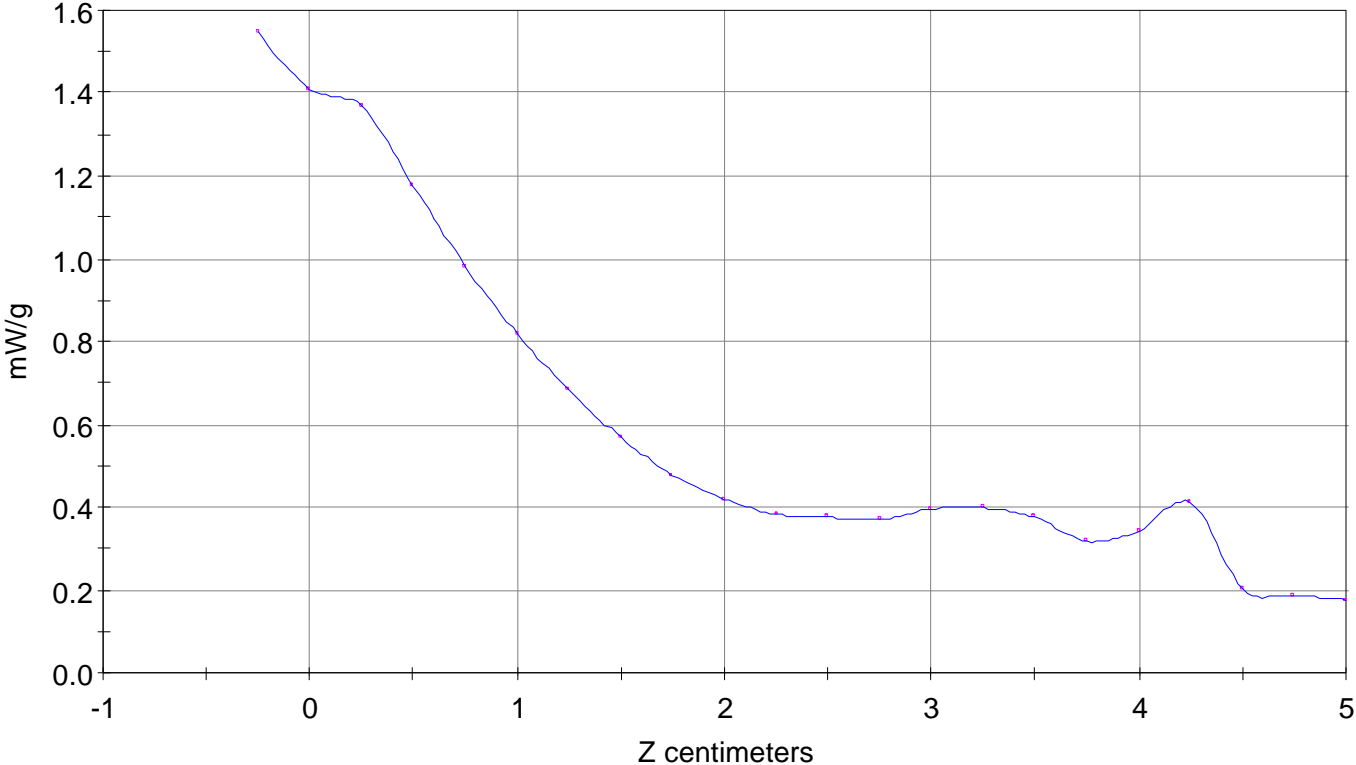
Calc. Voltage @ Surface (Vs) = 0.0212

Voltage @ 1.00 cm (Vt) = 0.0135

Ave. Voltage (Vs+Vt)/2 = 0.0173

Ave. SAR over 1 g (mW/g) = 1.2653

SAR Scan
File : 00112909_ZOOM
Start : 29-Nov-100 11:04:11 am End : 29-Nov-100 11:15:03 am
SANYO/C401SA/01;848.31MHz;W;Helical/Out;
Head/Left Ear;ZOOM/SAR;PCTEST/E Field/0 DegreesBrain/41.500/0.900

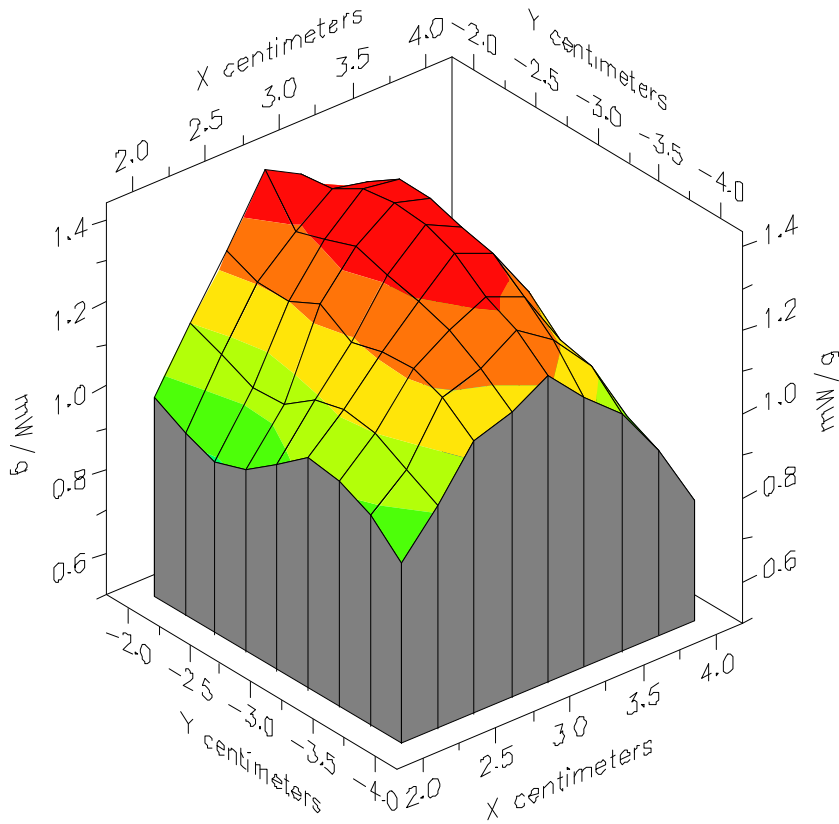


File : 00112909_ZOOM

Start : 29-Nov-100 11:04:11 am End : 29-Nov-100 11:15:03 am

SANYO/C401SA/01;848.31MHz;W;Helical/Out;

Head/Left Ear;ZOOM/SAR;PCTEST/E Field/0 DegreesBrain/41.500/0.900

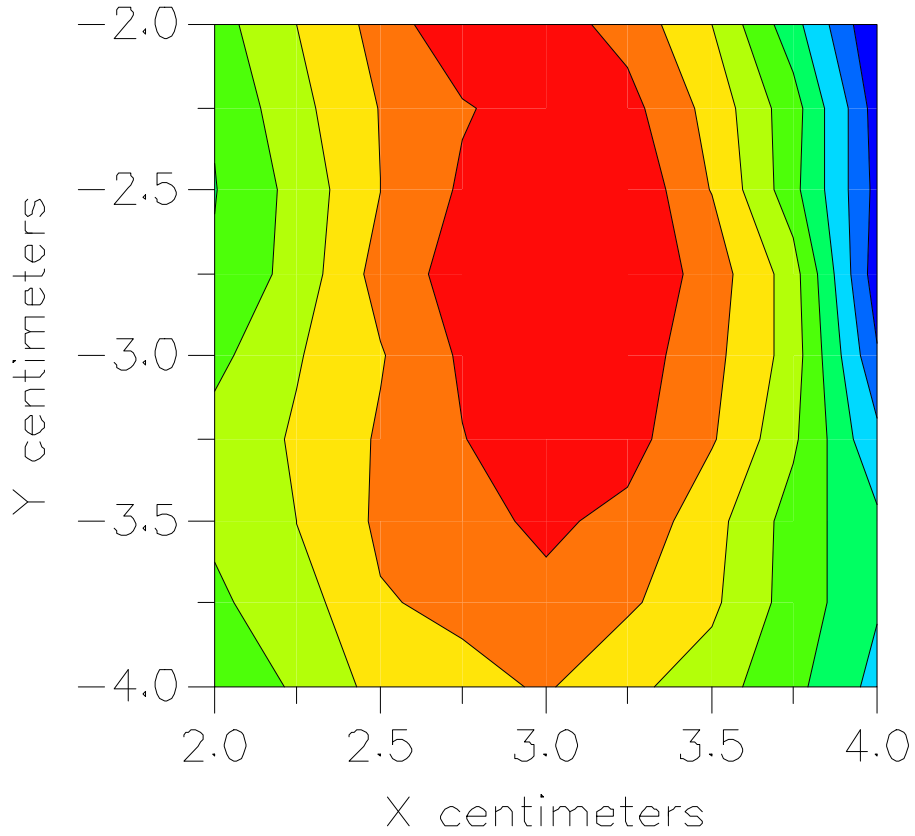


File : 00112909_ZOOM

Start : 29-Nov-100 11:04:11 am End : 29-Nov-100 11:15:03 am

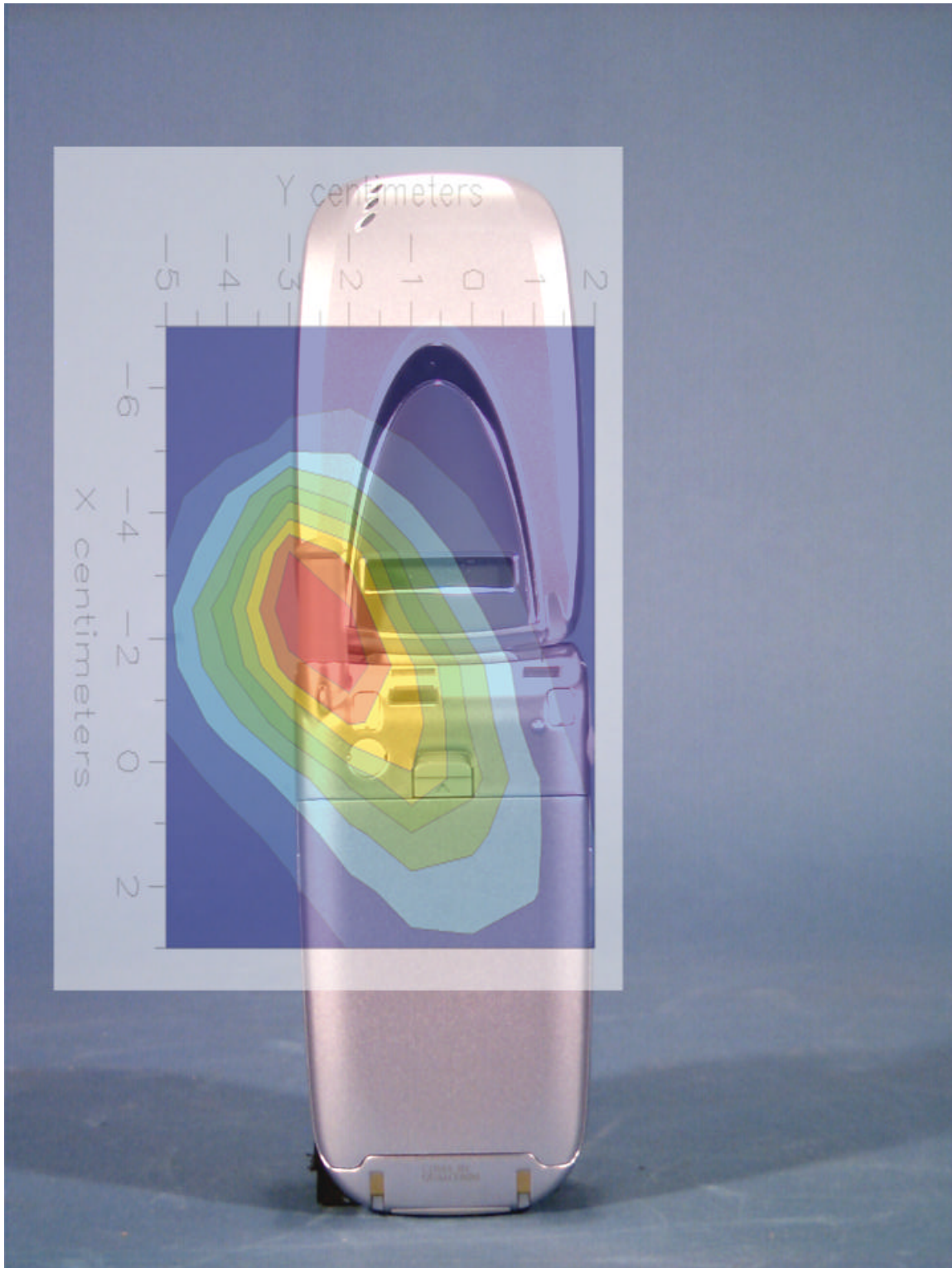
SANYO/C401SA/01;848.31MHz;W;Helical/Out;

Head/Left Ear;ZOOM/SAR;PCTEST/E Field/0 DegreesBrain/41.500/0.900



Peak SAR Location

Hand SAR



File : c:/idx3/SYSTEM/SARMEAS3/data/Normal/00113002_SAR.VLT
Start : 30-Nov-100 09:58:55 am End : 30-Nov-100 10:08:12 am

Radio Type : SANYO
Model Number : C401SA
Serial Number : 01
Frequency : 824.70 MHz
Peak Trans. Pwr : 0.260 W
Start Trans. Pwr : 0.260 W
Antenna Type : Helical
Antenna Posn. : In
Phantom Type : Body
Phantom Posn. : Abdomen
Scan Type : ZOOM/SAR 10g
Probe Name : PCTEST
Field Type : E Field
Orientation : 0 Degrees

Mixture Type = Muscle
Mixture Dielectric Constant = 51.700
Mixture Conductivity = 1.100

Comment :
SANYO CDMA MODE PHONE - HAND SAR
CHAN 1013 Conducted 24.1 dBm
SANYO CDMA MODE PHONE

Robot : PCTEST

Probe Offset = 0.25 cm
Sensor Factor = 0.0108
Conversion Factor = 0.894

PCTEST Amplifier Channel Settings : 0.166 0.135 0.132

Max Location : X = -2.000, Y = -2.500, Z = 0.000 (cm) Value = 40.433

Ave. SAR over 10 g (mW/g) = 1.3350

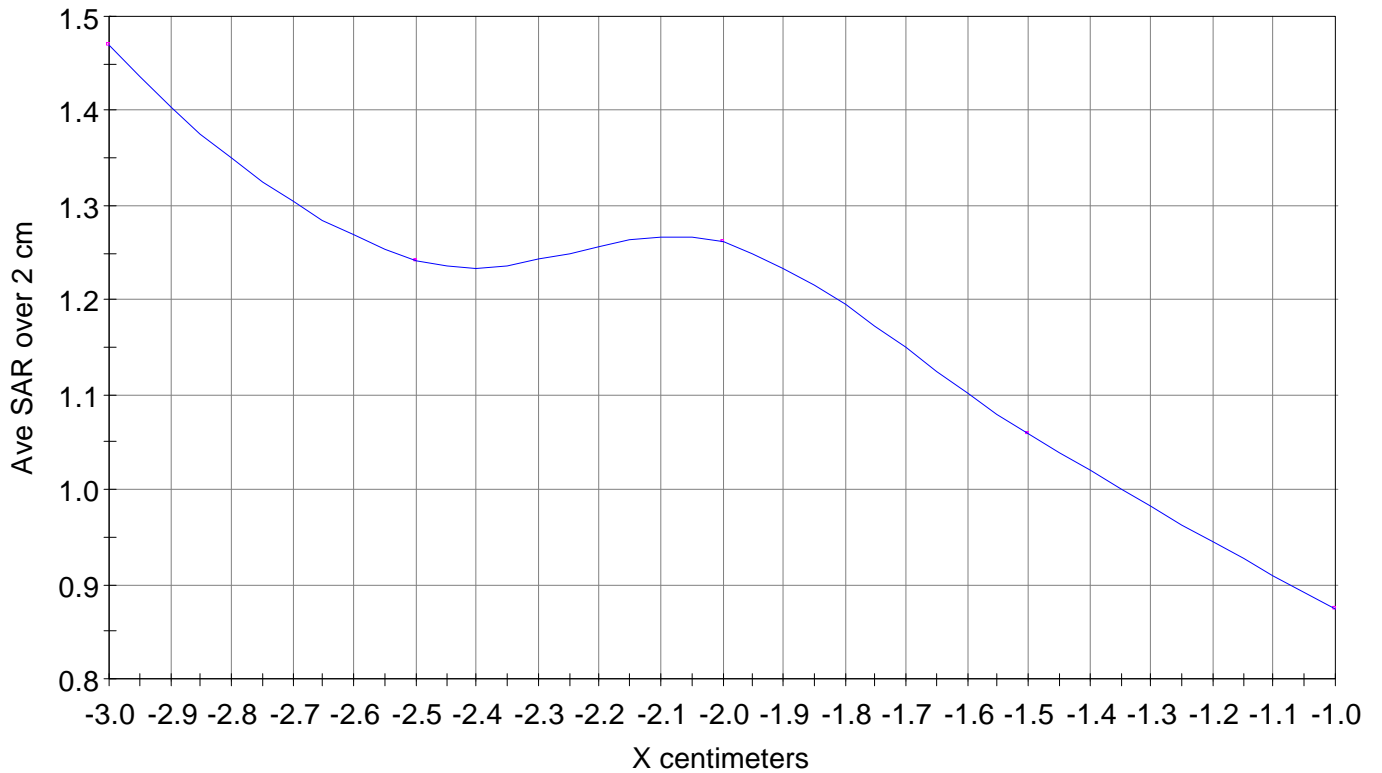
X-Z Plane Slice Y=-2.500

File : 00113002_SAR

Start : 30-Nov-100 09:58:55 am End : 30-Nov-100 10:08:12 am

SANYO/C401SA/01;824.70MHz;W;Helical/In;

Body/Abdomen;ZOOM/SAR 10g;PCTEST/E Field/0 DegreesMuscle/51.700/1.100

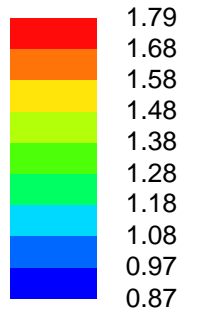
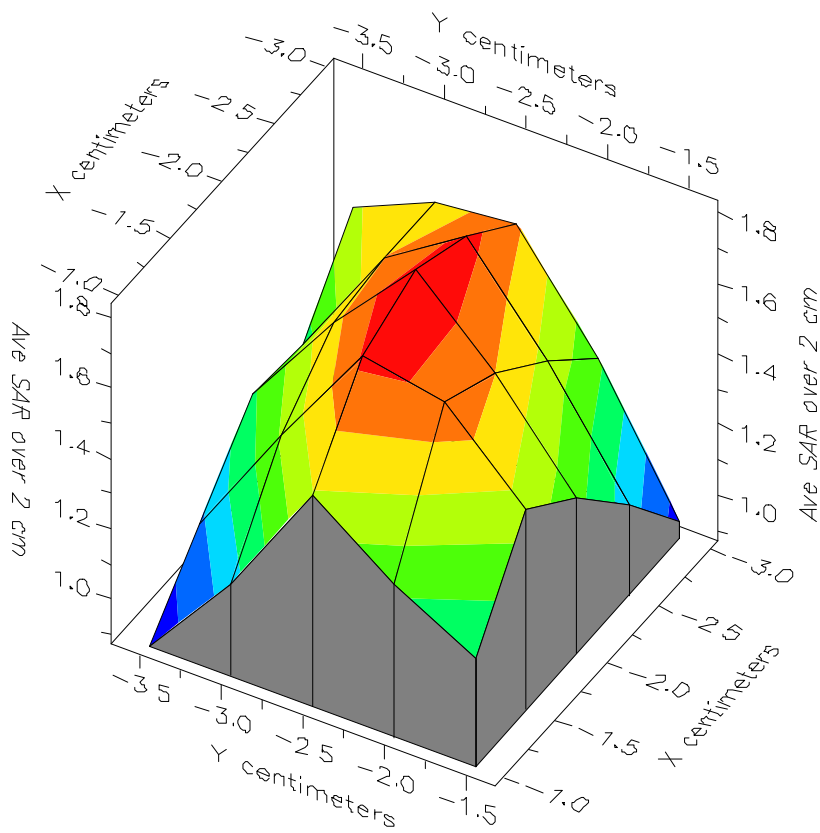


File : 00113002_SAR

Start : 30-Nov-100 09:58:55 am End : 30-Nov-100 10:08:12 am

SANYO/C401SA/01;824.70MHz;W;Helical/In;

Body/Abdomen;ZOOM/SAR 10g;PCTEST/E Field/0 DegreesMuscle/51.700/1.100

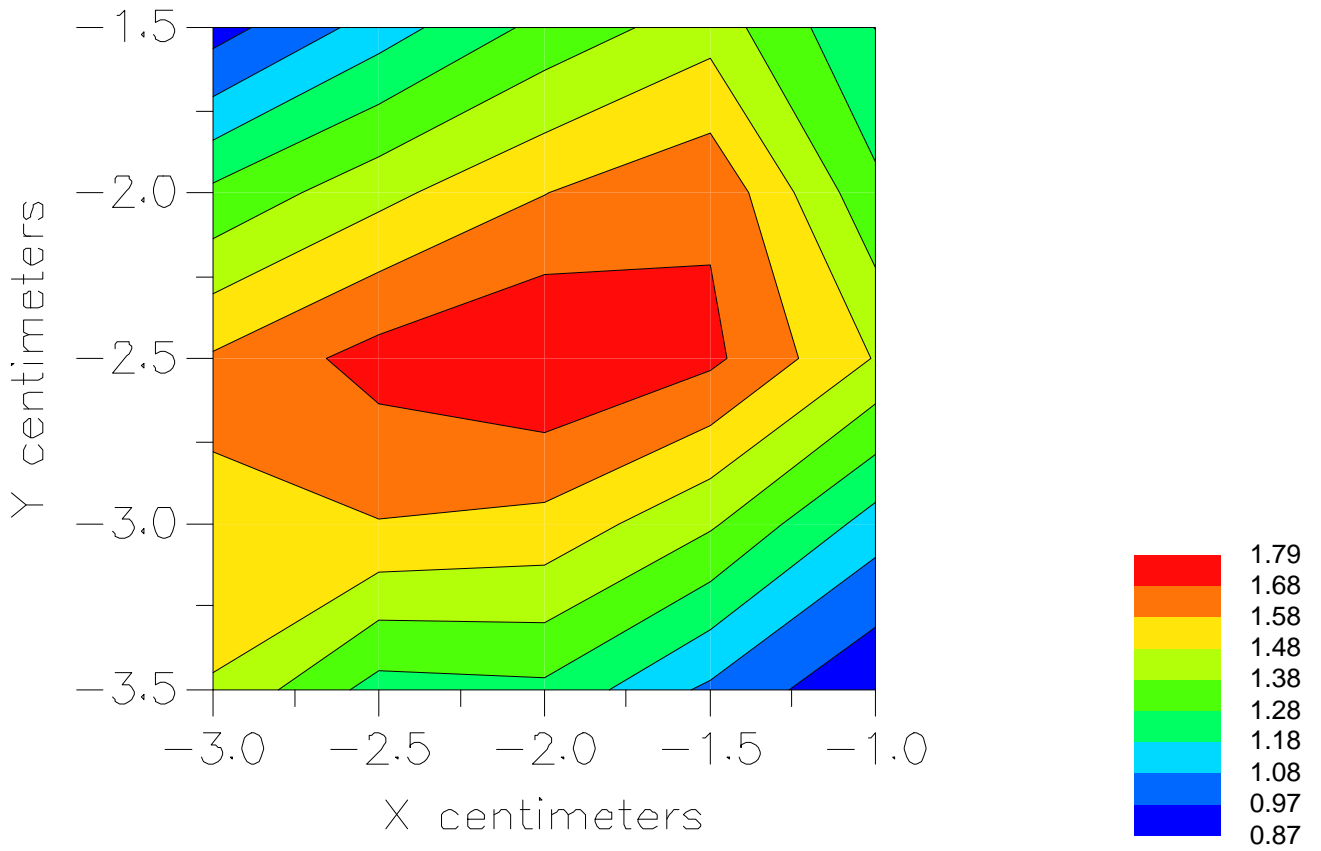


File : 00113002_SAR

Start : 30-Nov-100 09:58:55 am End : 30-Nov-100 10:08:12 am

SANYO/C401SA/01;824.70MHz;W;Helical/In;

Body/Abdomen;ZOOM/SAR 10g;PCTEST/E Field/0 DegreesMuscle/51.700/1.100



File : c:/idx3/SYSTEM/SARMEAS3/data/Normal/00113001_SAR.VLT
Start : 30-Nov-100 09:33:29 am End : 30-Nov-100 09:39:25 am

Radio Type : SANYO
Model Number : C401SA
Serial Number : 01
Frequency : 824.70 MHz
Peak Trans. Pwr : 0.260 W
Start Trans. Pwr : 0.260 W
Antenna Type : Helical
Antenna Posn. : Out
Phantom Type : Body
Phantom Posn. : Abdomen
Scan Type : ZOOM/SAR 10g
Probe Name : PCTEST
Field Type : E Field
Orientation : 0 Degrees

Mixture Type = Muscle
Mixture Dielectric Constant = 51.700
Mixture Conductivity = 1.100

Comment :
SANYO CDMA MODE PHONE - HAND SAR
CHAN 1013 Conducted 24.1 dBm
SANYO CDMA MODE PHONE

Robot : PCTEST

Probe Offset = 0.25 cm
Sensor Factor = 0.0108
Conversion Factor = 0.894

PCTEST Amplifier Channel Settings : 0.166 0.135 0.132

Max Location : X = -2.500, Y = -3.000, Z = 0.000 (cm) Value = 39.845

Ave. SAR over 10 g (mW/g) = 1.3198

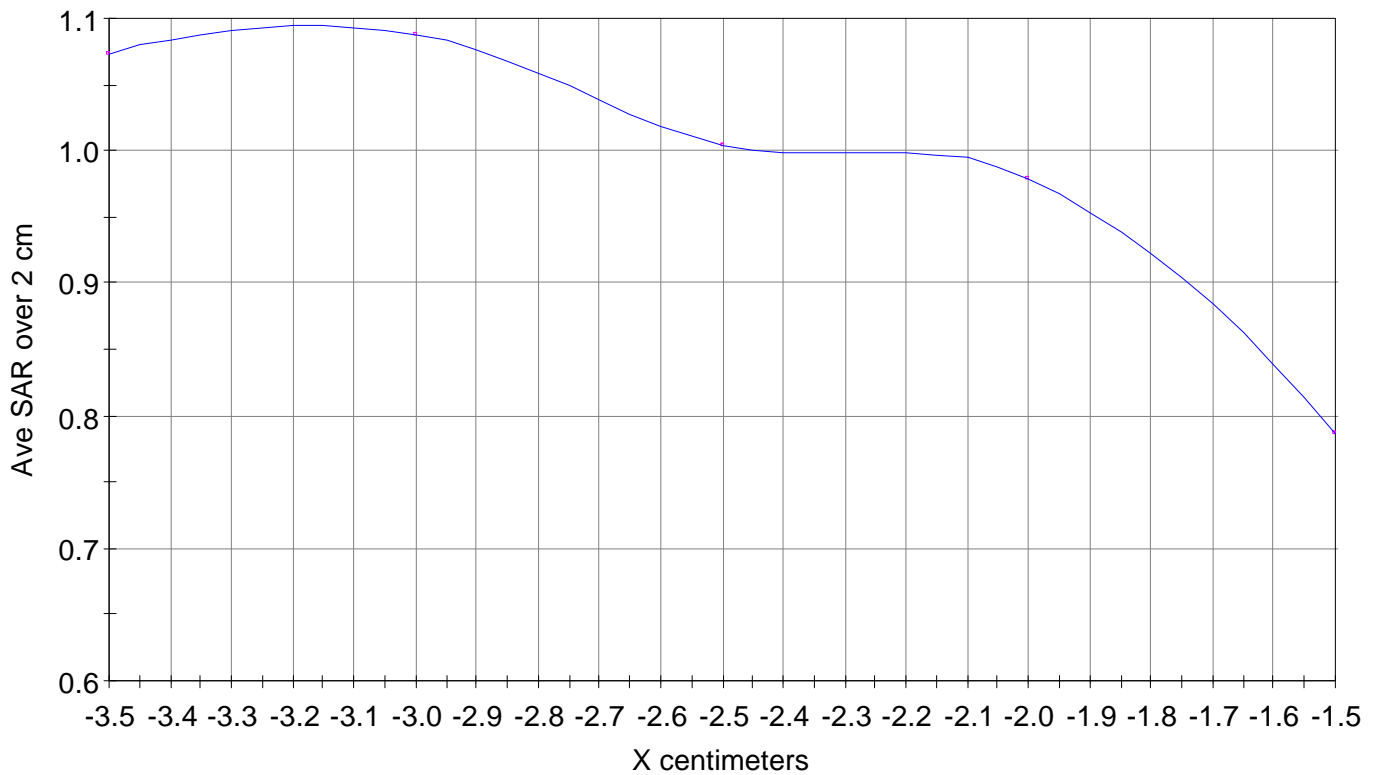
X-Z Plane Slice Y=-3.000

File : 00113001_SAR

Start : 30-Nov-100 09:33:29 am End : 30-Nov-100 09:39:25 am

SANYO/C401SA/01;824.70MHz;W;Helical/Out;

Body/Abdomen;ZOOM/SAR 10g;PCTEST/E Field/0 DegreesMuscle/51.700/1.100

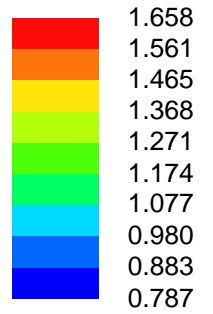
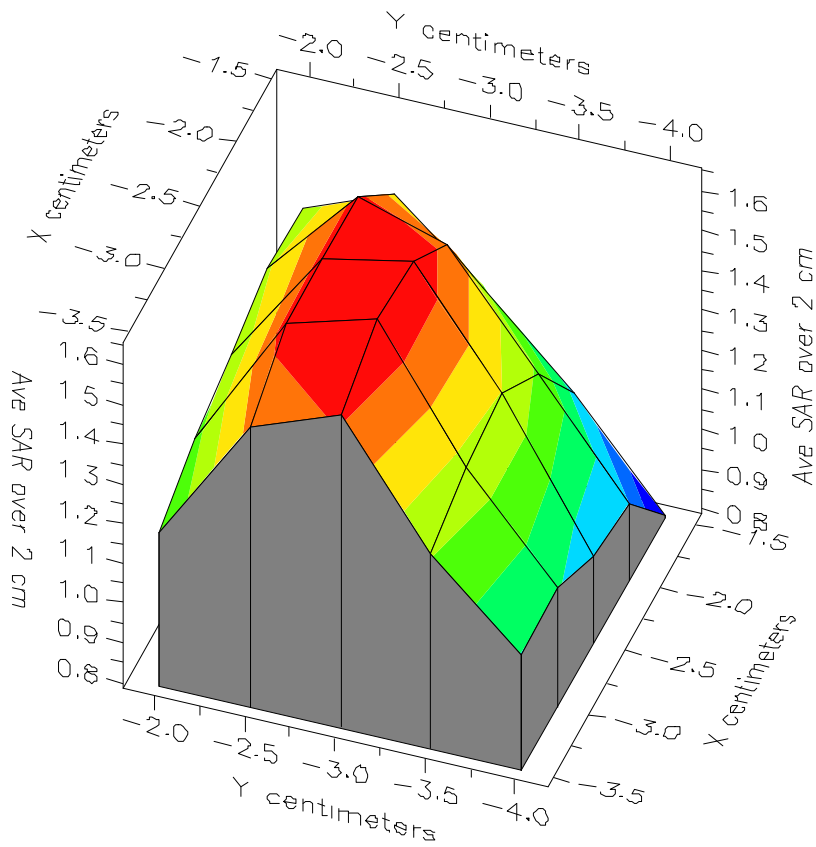


File : 00113001_SAR

Start : 30-Nov-100 09:33:29 am End : 30-Nov-100 09:39:25 am

SANYO/C401SA/01;824.70MHz;W;Helical/Out;

Body/Abdomen;ZOOM/SAR 10g;PCTEST/E Field/0 DegreesMuscle/51.700/1.100

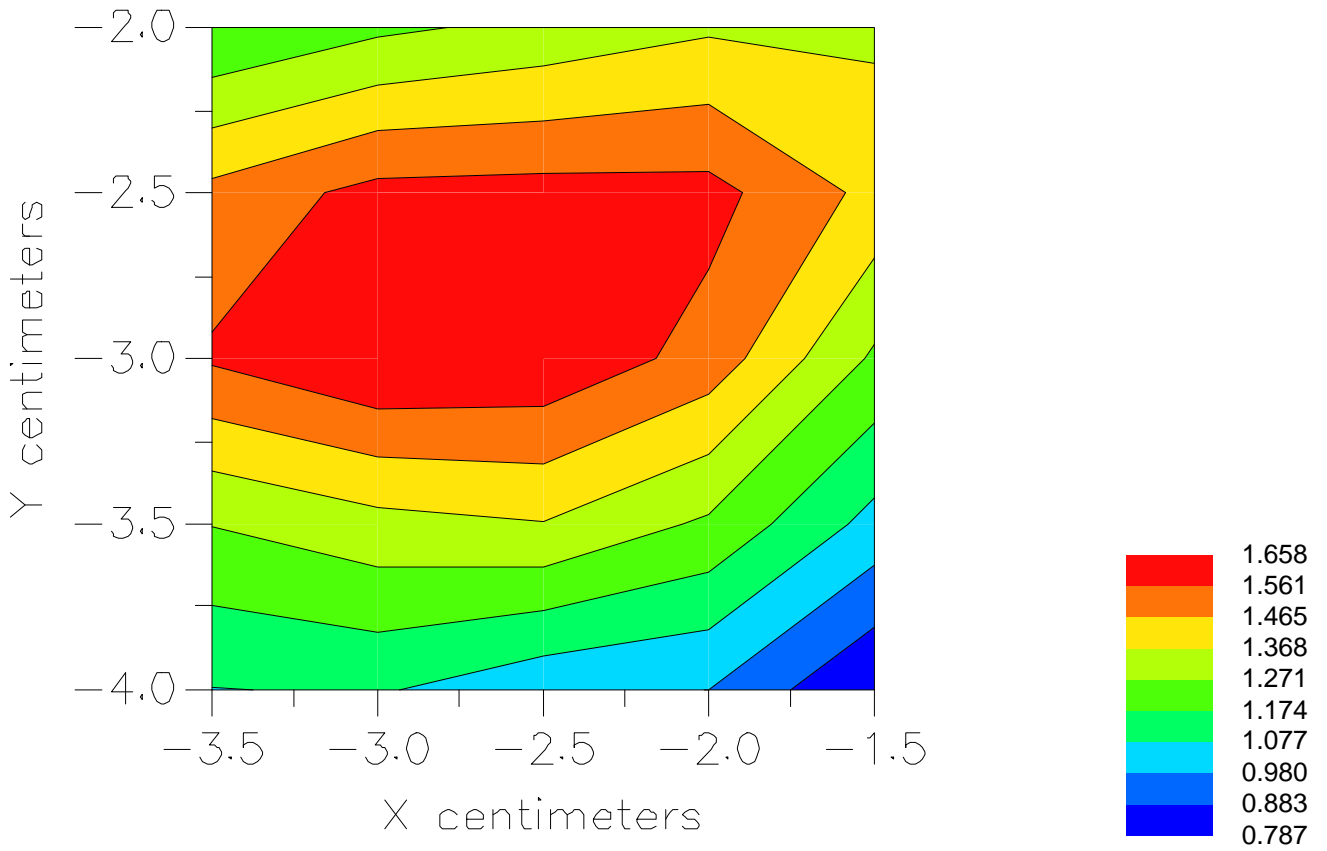


File : 00113001_SAR

Start : 30-Nov-100 09:33:29 am End : 30-Nov-100 09:39:25 am

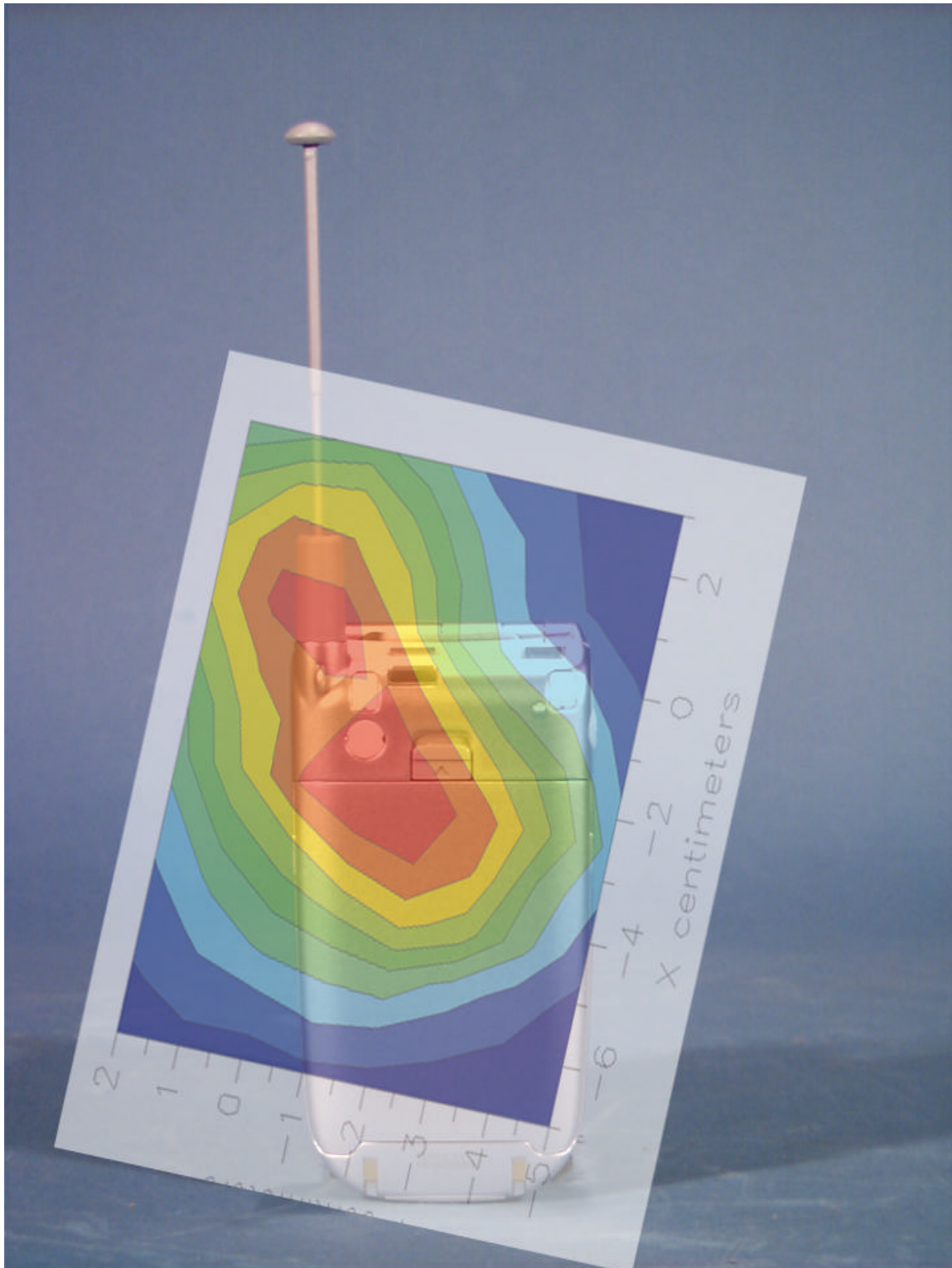
SANYO/C401SA/01;824.70MHz;W;Helical/Out;

Body/Abdomen;ZOOM/SAR 10g;PCTEST/E Field/0 DegreesMuscle/51.700/1.100



Peak SAR Location

Body SAR



File : c:/idx3/SYSTEM/SARMEAS3/data/Normal/00112920_ZOOM.VLT
Start : 29-Nov-100 03:01:23 pm End : 29-Nov-100 03:09:36 pm

Radio Type : SANYO
Model Number : C401SA
Serial Number : 01
Frequency : 824.70 MHz
Peak Trans. Pwr : 0.260 W
Start Trans. Pwr : 0.260 W
Antenna Type : Helical
Antenna Posn. : In
Phantom Type : Body
Phantom Posn. : Abdomen
Scan Type : ZOOM/SAR
Probe Name : PCTEST
Field Type : E Field
Orientation : 0 Degrees

Mixture Type = Muscle
Mixture Dielectric Constant = 51.700
Mixture Conductivity = 1.100

Comment :
SANYO CDMA MODE PHONE - BODY SAR
CHAN 1013 Conducted 24.1 dBm
SANYO CDMA MODE PHONE

Robot : PCTEST

Probe Offset = 0.25 cm
Sensor Factor = 0.0108
Conversion Factor = 0.894

PCTEST Amplifier Channel Settings : 0.166 0.135 0.132

Max Location : X = -1.500, Y = -1.250, Z = 0.000 (cm) Value = 10.084

Measured Values (volts) =
8.951E-003 7.773E-003 7.297E-003 6.876E-003 6.444E-003 5.775E-003
4.944E-003 3.988E-003 3.027E-003 2.453E-003 2.045E-003 2.072E-003
2.434E-003 2.812E-003 3.156E-003 3.077E-003 2.477E-003 2.003E-003
1.457E-003 1.355E-003 1.281E-003

Calc. Voltage @ Surface (Vs) = 0.0099

Voltage @ 1.00 cm (Vt) = 0.0069

Ave. Voltage (Vs+Vt)/2 = 0.0084

Ave. SAR over 1 g (mW/g) = 0.6952

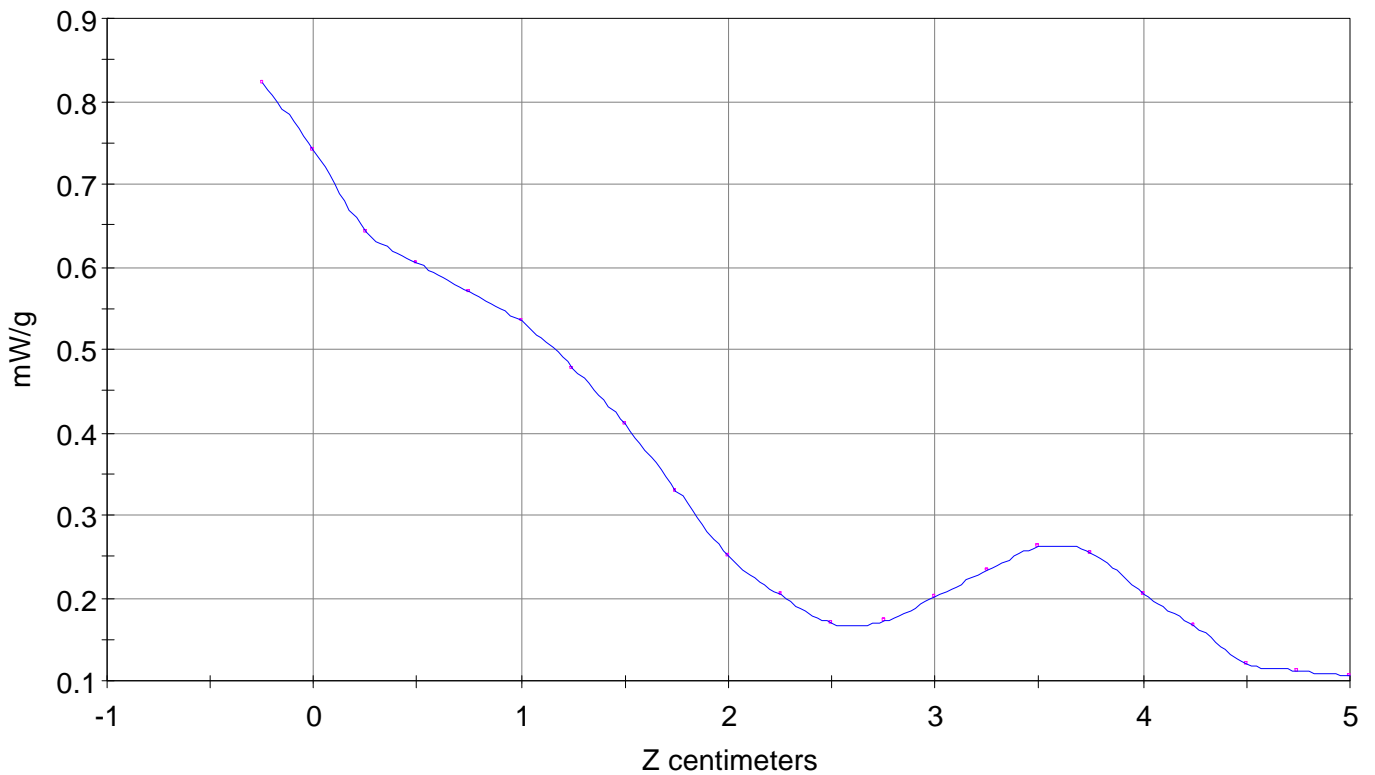
SAR Scan

File : 00112920_ZOOM

Start : 29-Nov-100 03:01:23 pm End : 29-Nov-100 03:09:36 pm

SANYO/C401SA/01;824.70MHz;W;Helical/In;

Body/Abdomen;ZOOM/SAR;PCTEST/E Field/0 DegreesMuscle/51.700/1.100

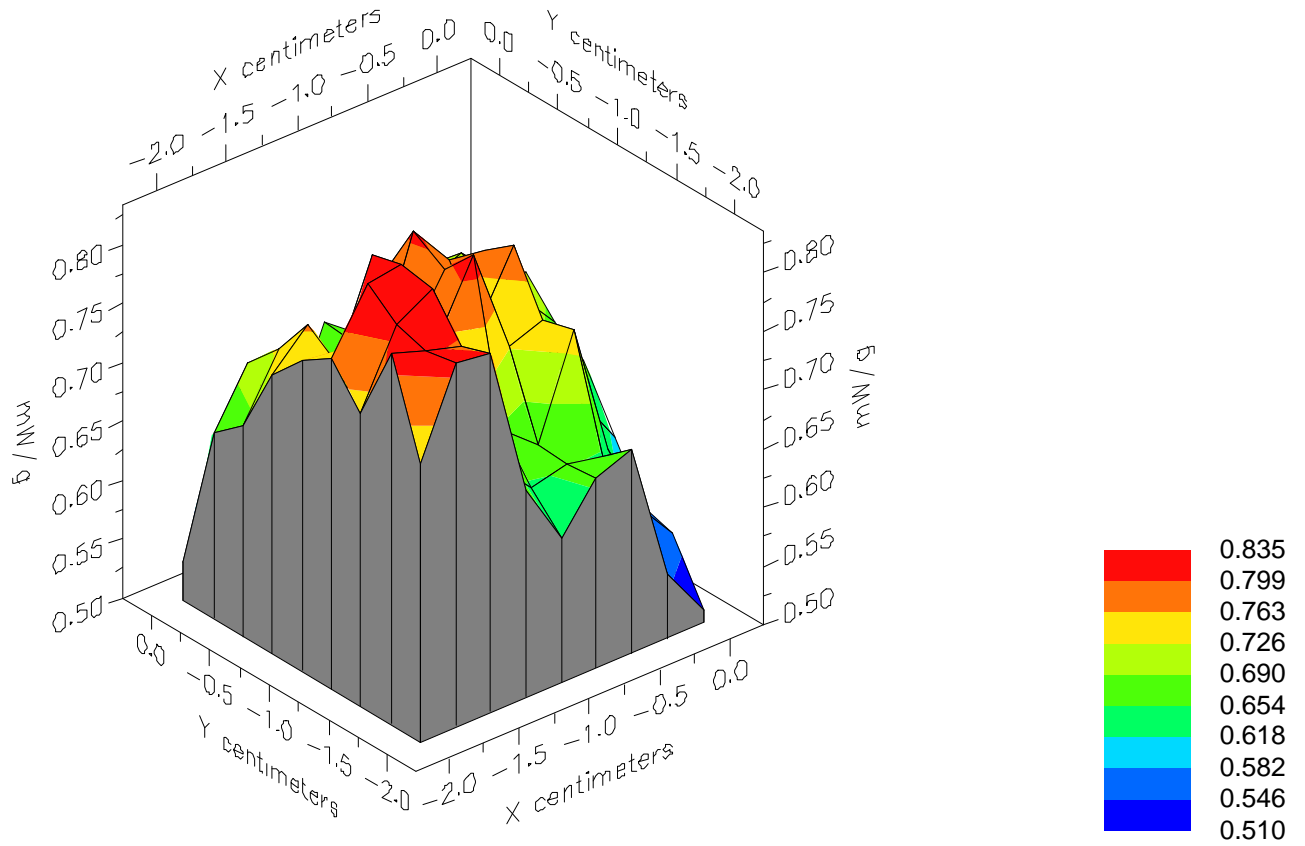


File : 00112920_ZOOM

Start : 29-Nov-100 03:01:23 pm End : 29-Nov-100 03:09:36 pm

SANYO/C401SA/01;824.70MHz;W;Helical/In;

Body/Abdomen;ZOOM/SAR;PCTEST/E Field/0 DegreesMuscle/51.700/1.100

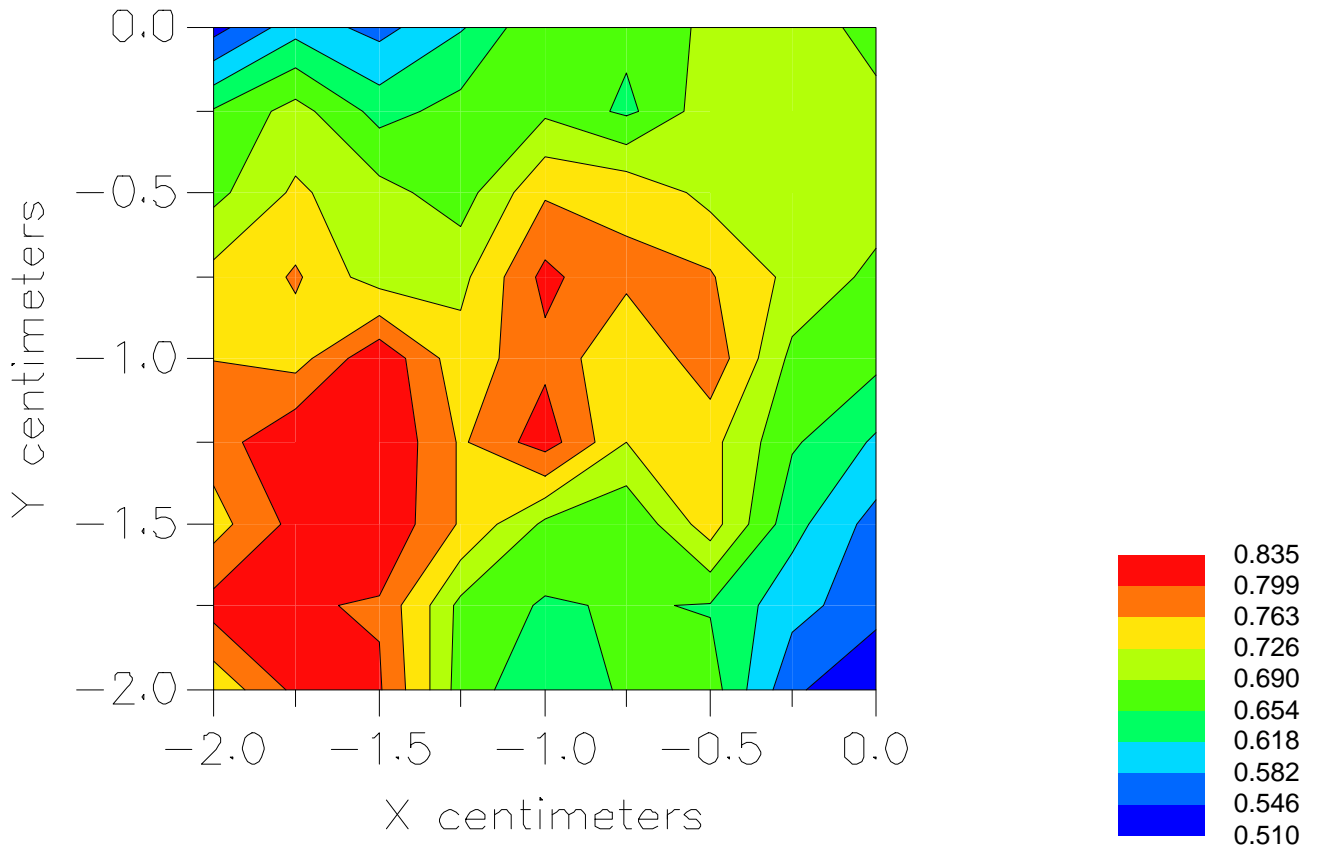


File : 00112920_ZOOM

Start : 29-Nov-100 03:01:23 pm End : 29-Nov-100 03:09:36 pm

SANYO/C401SA/01;824.70MHz;W;Helical/ln;

Body/Abdomen;ZOOM/SAR;PCTEST/E Field/0 DegreesMuscle/51.700/1.100



File : c:/idx3/SYSTEM/SARMEAS3/data/Normal/00112914_ZOOM.VLT
Start : 29-Nov-100 01:17:05 pm End : 29-Nov-100 01:27:00 pm

Radio Type : SANYO
Model Number : C401SA
Serial Number : 01
Frequency : 824.70 MHz
Peak Trans. Pwr : 0.260 W
Start Trans. Pwr : 0.260 W
Antenna Type : Helical
Antenna Posn. : Out
Phantom Type : Body
Phantom Posn. : Abdomen
Scan Type : ZOOM/SAR
Probe Name : PCTEST
Field Type : E Field
Orientation : 0 Degrees

Mixture Type = Muscle
Mixture Dielectric Constant = 51.700
Mixture Conductivity = 1.100

Comment :
SANYO CDMA MODE PHONE - BODY SAR
CHAN 1013 Conducted 24.1 dBm
SANYO CDMA MODE PHONE

Robot : PCTEST

Probe Offset = 0.25 cm
Sensor Factor = 0.0108
Conversion Factor = 0.894

PCTEST Amplifier Channel Settings : 0.166 0.135 0.132

Max Location : X = -2.500, Y = -2.000, Z = 0.000 (cm) Value = 18.843

Measured Values (volts) =
1.824E-002 1.588E-002 1.405E-002 1.211E-002 1.032E-002 8.177E-003
6.298E-003 4.359E-003 3.446E-003 3.157E-003 3.603E-003 4.293E-003
4.916E-003 5.039E-003 4.160E-003 3.029E-003 2.587E-003 1.732E-003
1.555E-003 1.450E-003 1.365E-003

Calc. Voltage @ Surface (Vs) = 0.0208

Voltage @ 1.00 cm (Vt) = 0.0121

Ave. Voltage (Vs+Vt)/2 = 0.0164

Ave. SAR over 1 g (mW/g) = 1.3613

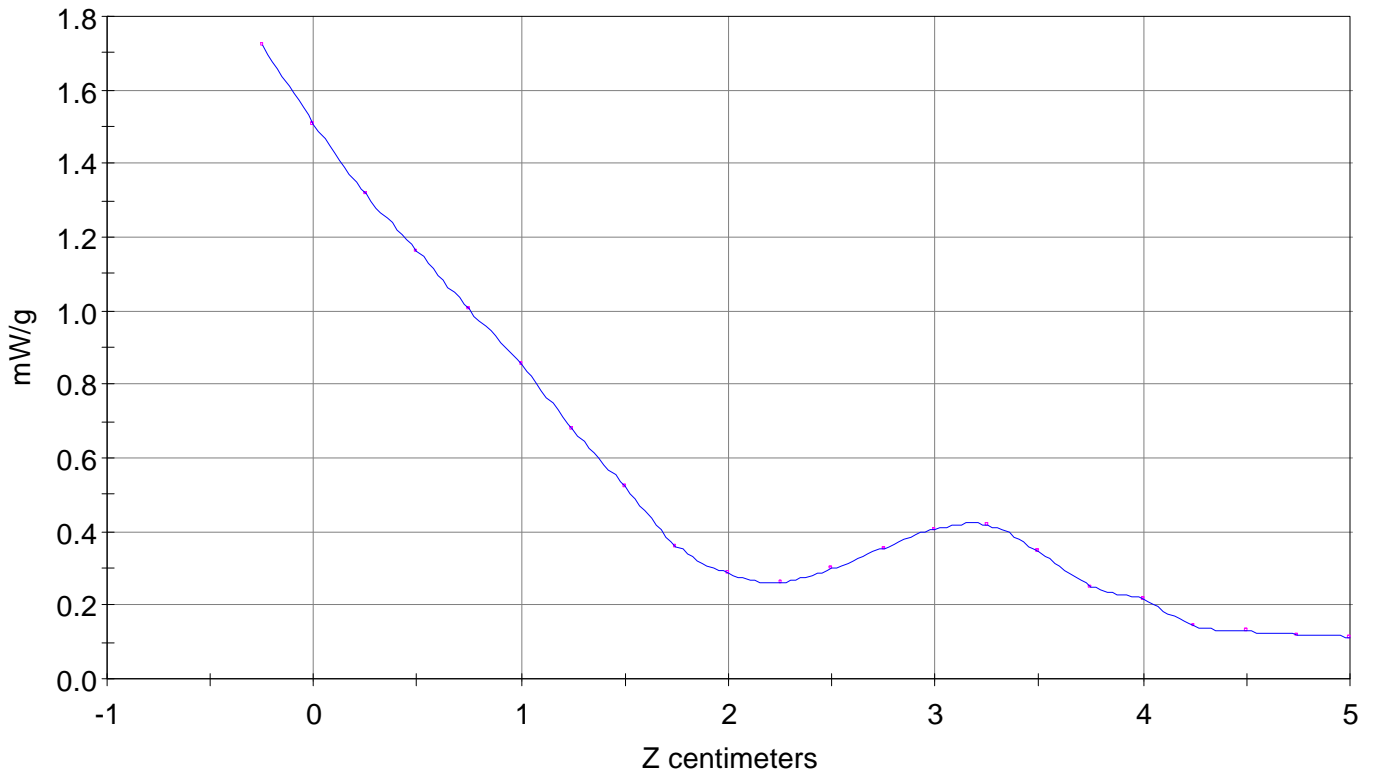
SAR Scan

File : 00112914_ZOOM

Start : 29-Nov-100 01:17:05 pm End : 29-Nov-100 01:27:00 pm

SANYO/C401SA/01;824.70MHz;W;Helical/Out;

Body/Abdomen;ZOOM/SAR;PCTEST/E Field/0 DegreesMuscle/51.700/1.100

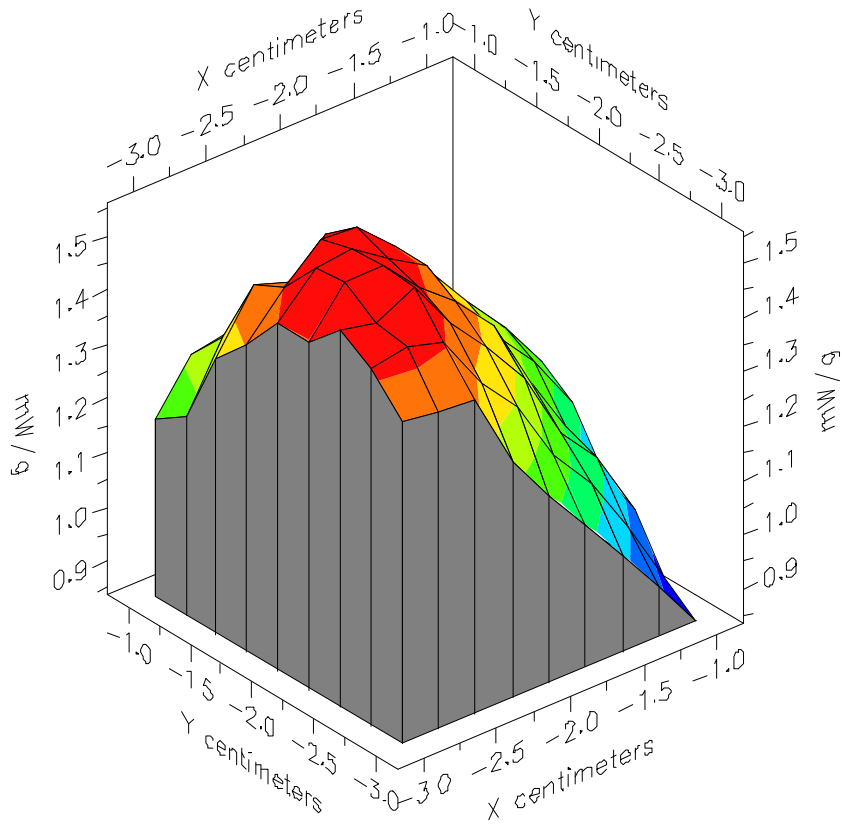


File : 00112914_ZOOM

Start : 29-Nov-100 01:17:05 pm End : 29-Nov-100 01:27:00 pm

SANYO/C401SA/01;824.70MHz;W;Helical/Out;

Body/Abdomen;ZOOM/SAR;PCTEST/E Field/0 DegreesMuscle/51.700/1.100

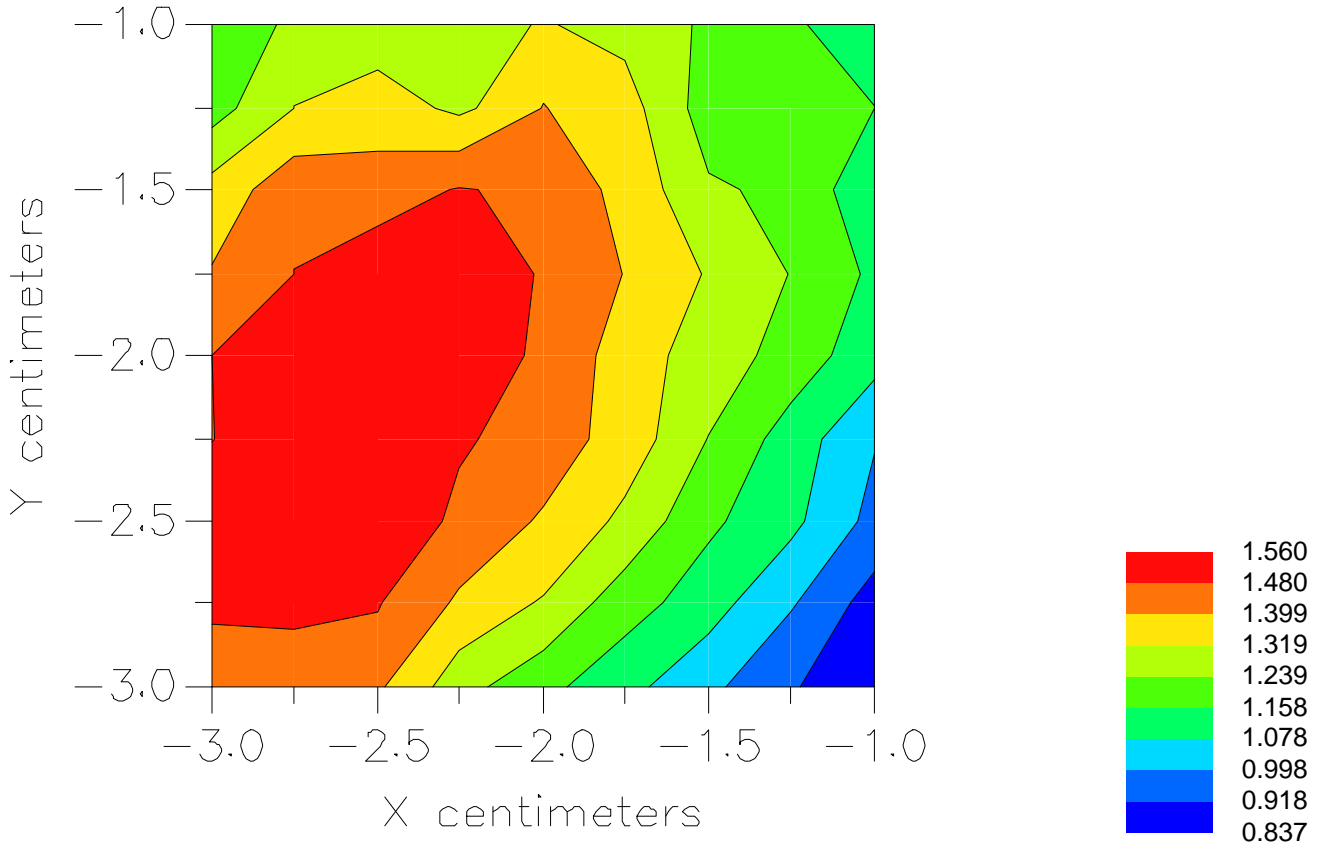


File : 00112914_ZOOM

Start : 29-Nov-100 01:17:05 pm End : 29-Nov-100 01:27:00 pm

SANYO/C401SA/01;824.70MHz;W;Helical/Out;

Body/Abdomen;ZOOM/SAR;PCTEST/E Field/0 DegreesMuscle/51.700/1.100



File : c:/idx3/SYSTEM/SARMEAS3/data/Normal/00112927_ZOOM.VLT
Start : 29-Nov-100 03:58:21 pm End : 29-Nov-100 04:09:07 pm

Radio Type : SANYO
Model Number : C401SA
Serial Number : 01
Frequency : 836.49 MHz
Peak Trans. Pwr : 0.260 W
Start Trans. Pwr : 0.260 W
Antenna Type : Helical
Antenna Posn. : In
Phantom Type : Body
Phantom Posn. : Abdomen
Scan Type : ZOOM/SAR
Probe Name : PCTEST
Field Type : E Field
Orientation : 0 Degrees

Mixture Type = Muscle
Mixture Dielectric Constant = 51.700
Mixture Conductivity = 1.100

Comment :
SANYO CDMA MODE PHONE - BODY SAR
CHAN 0383 Conducted 24.1 dBm
SANYO CDMA MODE PHONE

Robot : PCTEST

Probe Offset = 0.25 cm
Sensor Factor = 0.0108
Conversion Factor = 0.894

PCTEST Amplifier Channel Settings : 0.166 0.135 0.132

Max Location : X = -1.750, Y = -1.500, Z = 0.000 (cm) Value = 10.049

Measured Values (volts) =
9.918E-003 8.478E-003 7.811E-003 7.312E-003 6.651E-003 5.801E-003
4.820E-003 3.761E-003 2.862E-003 2.196E-003 2.009E-003 2.154E-003
2.516E-003 2.965E-003 3.114E-003 2.826E-003 2.168E-003 1.931E-003
1.413E-003 1.289E-003 1.246E-003

Calc. Voltage @ Surface (Vs) = 0.0112

Voltage @ 1.00 cm (Vt) = 0.0073

Ave. Voltage (Vs+Vt)/2 = 0.0092

Ave. SAR over 1 g (mW/g) = 0.7655

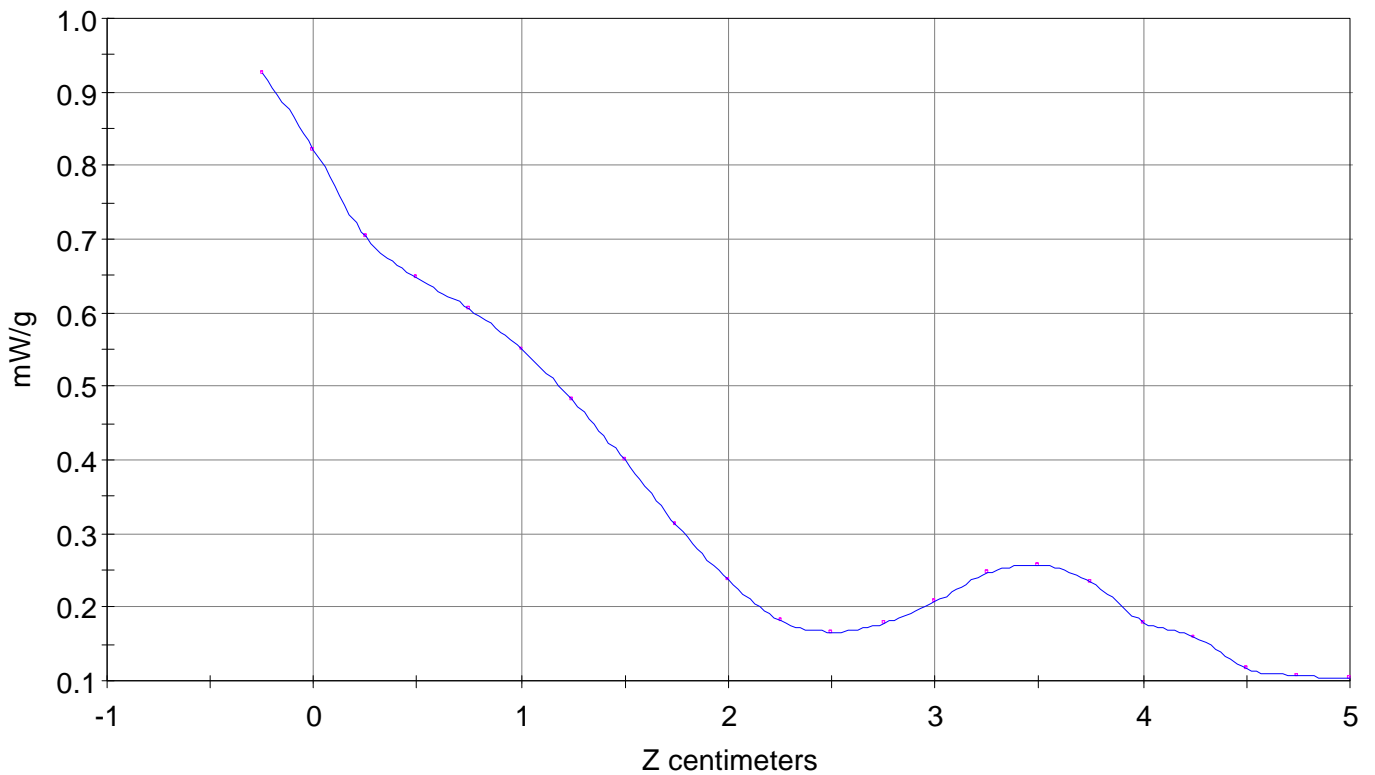
SAR Scan

File : 00112927_ZOOM

Start : 29-Nov-100 03:58:21 pm End : 29-Nov-100 04:09:07 pm

SANYO/C401SA/01;836.49MHz;W;Helical/In;

Body/Abdomen;ZOOM/SAR;PCTEST/E Field/0 DegreesMuscle/51.700/1.100

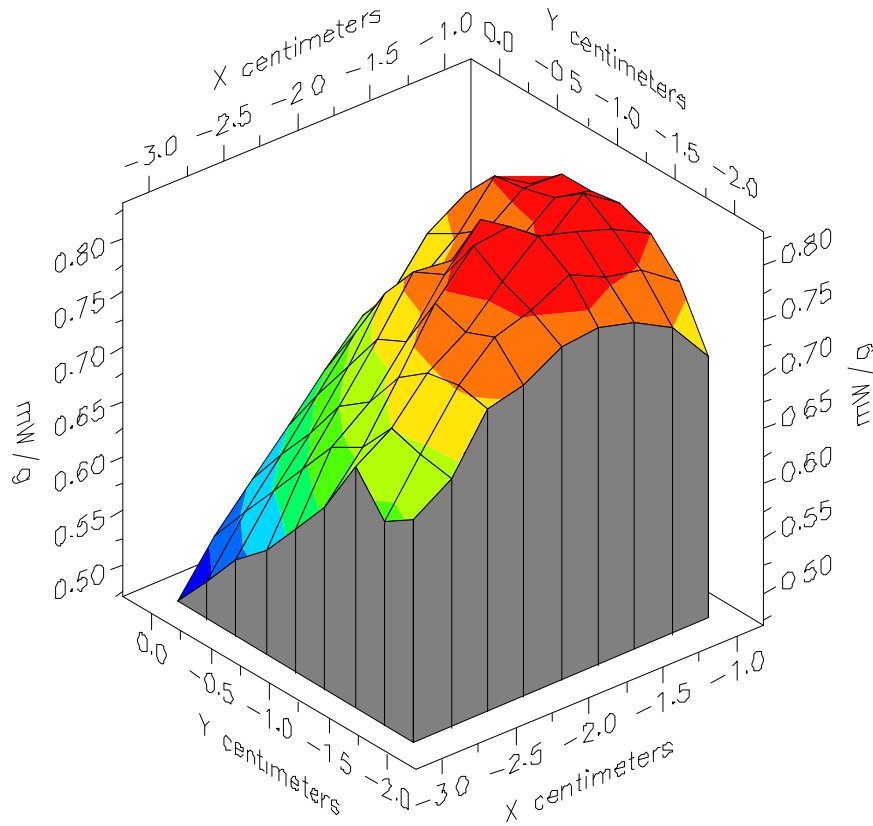


File : 00112927_ZOOM

Start : 29-Nov-100 03:58:21 pm End : 29-Nov-100 04:09:07 pm

SANYO/C401SA/01;836.49MHz;W;Helical/In;

Body/Abdomen;ZOOM/SAR;PCTEST/E Field/0 DegreesMuscle/51.700/1.100

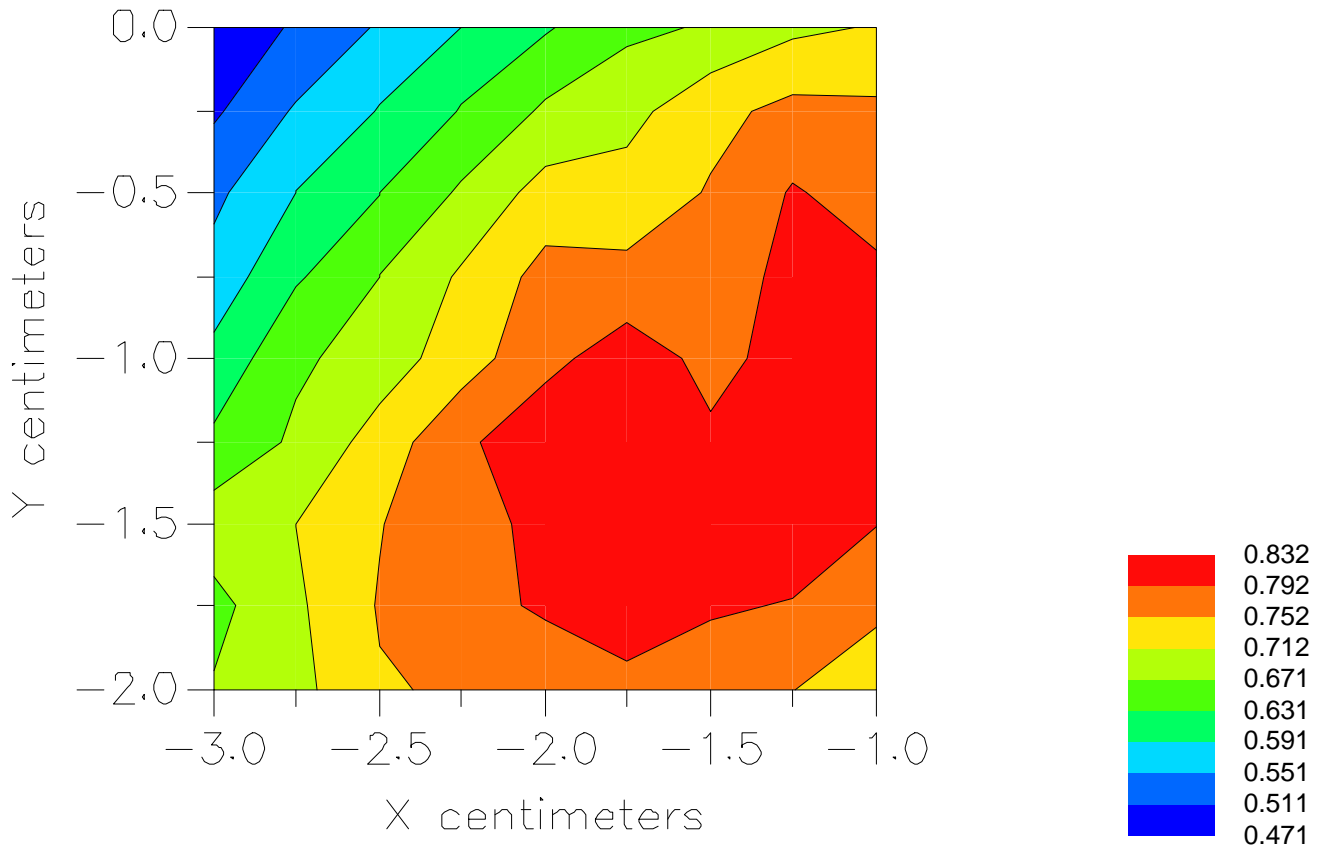


File : 00112927_ZOOM

Start : 29-Nov-100 03:58:21 pm End : 29-Nov-100 04:09:07 pm

SANYO/C401SA/01;836.49MHz;W;Helical/In;

Body/Abdomen;ZOOM/SAR;PCTEST/E Field/0 DegreesMuscle/51.700/1.100



File : c:/idx3/SYSTEM/SARMEAS3/data/Normal/00112925_ZOOM.VLT
Start : 29-Nov-100 03:55:10 pm End : 29-Nov-100 03:56:11 pm

Radio Type : SANYO
Model Number : C401SA
Serial Number : 01
Frequency : 836.49 MHz
Peak Trans. Pwr : 0.260 W
Start Trans. Pwr : 0.260 W
Antenna Type : Helical
Antenna Posn. : Out
Phantom Type : Body
Phantom Posn. : Abdomen
Scan Type : SAR
Probe Name : PCTEST
Field Type : E Field
Orientation : 0 Degrees

Mixture Type = Muscle
Mixture Dielectric Constant = 51.700
Mixture Conductivity = 1.100

Comment :
SANYO CDMA MODE PHONE - BODY SAR
CHAN 0383 Conducted 24.1 dBm
SANYO CDMA MODE PHONE

Robot : PCTEST

Probe Offset = 0.25 cm
Sensor Factor = 0.0108
Conversion Factor = 0.894

PCTEST Amplifier Channel Settings : 0.166 0.135 0.132

Max Location : X = -2.500, Y = -1.750, Z = 0.000 (cm) Value = 19.010

Measured Values (volts) =
1.785E-002 1.505E-002 1.381E-002 1.249E-002 1.044E-002 8.390E-003
6.112E-003 4.501E-003 3.368E-003 3.126E-003 3.719E-003 4.590E-003
5.402E-003 5.534E-003 4.503E-003 3.396E-003 2.043E-003 1.836E-003
1.628E-003 1.503E-003 1.447E-003

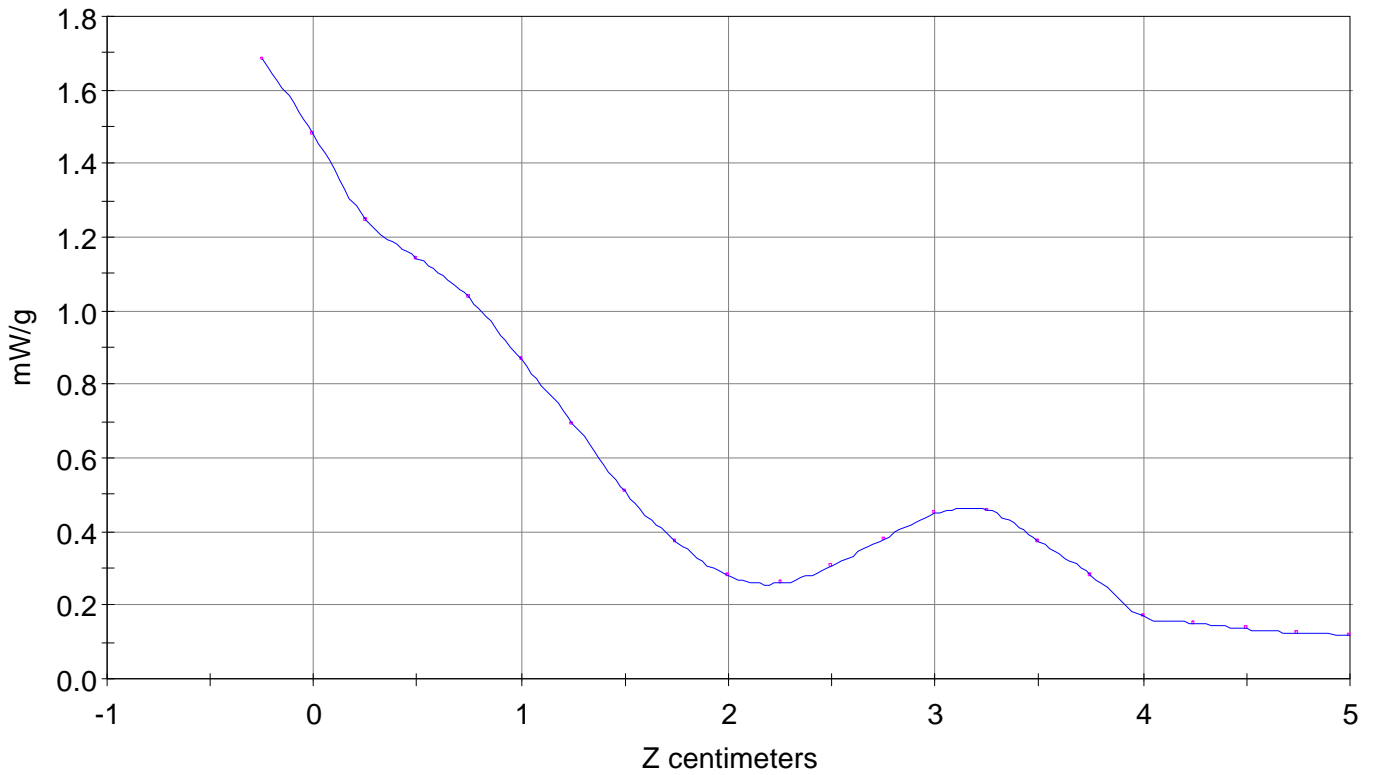
Calc. Voltage @ Surface (Vs) = 0.0203

Voltage @ 1.00 cm (Vt) = 0.0125

Ave. Voltage (Vs+Vt)/2 = 0.0164

Ave. SAR over 1 g (mW/g) = 1.3577

SAR Scan
File : 00112925_ZOOM
Start : 29-Nov-100 03:55:10 pm End : 29-Nov-100 03:56:11 pm
SANYO/C401SA/01;836.49MHz;W;Helical/Out;
Body/Abdomen;SAR;PCTEST/E Field/0 DegreesMuscle/51.700/1.100

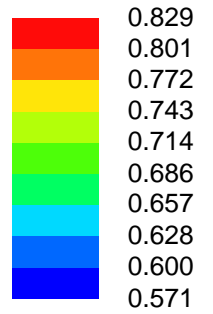
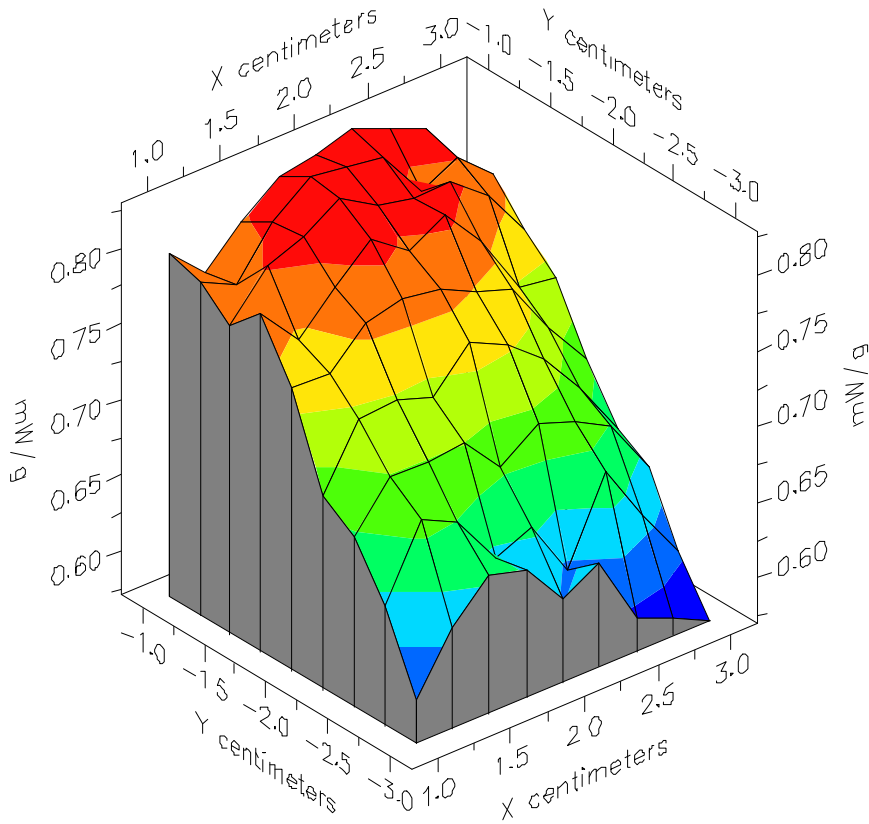


File : 00112723_ZOOM

Start : 27-Nov-100 05:22:00 pm End : 27-Nov-100 05:32:50 pm

TOSHIBA/CDM-9100/17;1908.75MHz;W;Helical/Out;

Body/Abdomen;ZOOM/SAR;PCTEST/E Field/0 DegreesMuscle/54.200/1.850

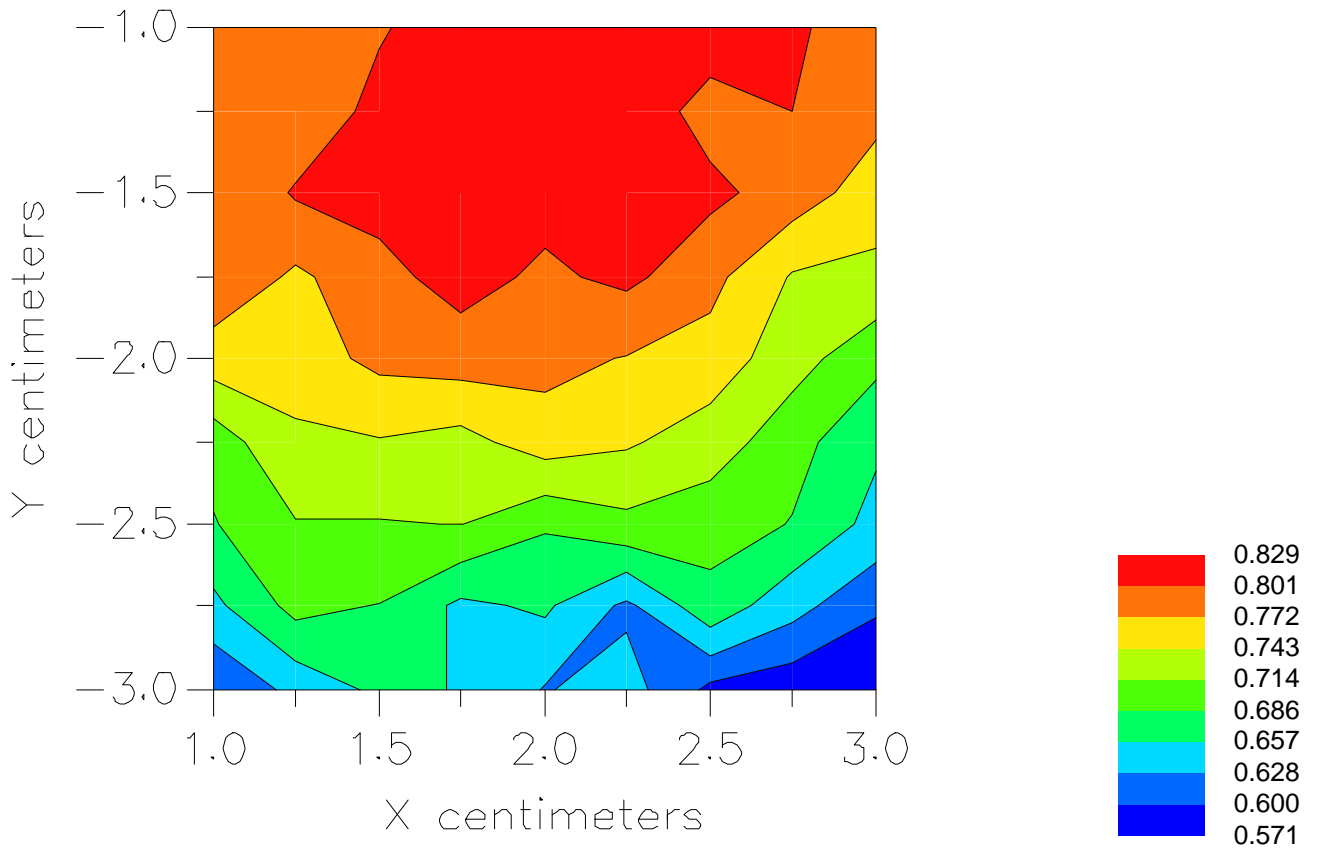


File : 00112723_ZOOM

Start : 27-Nov-100 05:22:00 pm End : 27-Nov-100 05:32:50 pm

TOSHIBA/CDM-9100/17;1908.75MHz;W;Helical/Out;

Body/Abdomen;ZOOM/SAR;PCTEST/E Field/0 DegreesMuscle/54.200/1.850



File : c:/idx3/SYSTEM/SARMEAS3/data/Normal/00112930_ZOOM.VLT
Start : 29-Nov-100 04:43:56 pm End : 29-Nov-100 04:54:49 pm

Radio Type : SANYO
Model Number : C401SA
Serial Number : 01
Frequency : 848.31 MHz
Peak Trans. Pwr : 0.260 W
Start Trans. Pwr : 0.260 W
Antenna Type : Helical
Antenna Posn. : In
Phantom Type : Body
Phantom Posn. : Abdomen
Scan Type : ZOOM/SAR
Probe Name : PCTEST
Field Type : E Field
Orientation : 0 Degrees

Mixture Type = Muscle
Mixture Dielectric Constant = 51.700
Mixture Conductivity = 1.100

Comment :
SANYO CDMA MODE PHONE - BODY SAR
CHAN 0777 Conducted 24.1 dBm
SANYO CDMA MODE PHONE

Robot : PCTEST

Probe Offset = 0.25 cm
Sensor Factor = 0.0108
Conversion Factor = 0.894

PCTEST Amplifier Channel Settings : 0.166 0.135 0.132

Max Location : X = -1.750, Y = -1.250, Z = 0.000 (cm) Value = 10.199

Measured Values (volts) =
9.648E-003 8.391E-003 7.692E-003 7.095E-003 6.533E-003 5.735E-003
4.729E-003 3.698E-003 2.809E-003 2.244E-003 2.034E-003 2.190E-003
2.623E-003 2.994E-003 3.161E-003 2.779E-003 2.060E-003 1.900E-003
1.363E-003 1.282E-003 1.243E-003

Calc. Voltage @ Surface (Vs) = 0.0108

Voltage @ 1.00 cm (Vt) = 0.0071

Ave. Voltage (Vs+Vt)/2 = 0.0090

Ave. SAR over 1 g (mW/g) = 0.7410

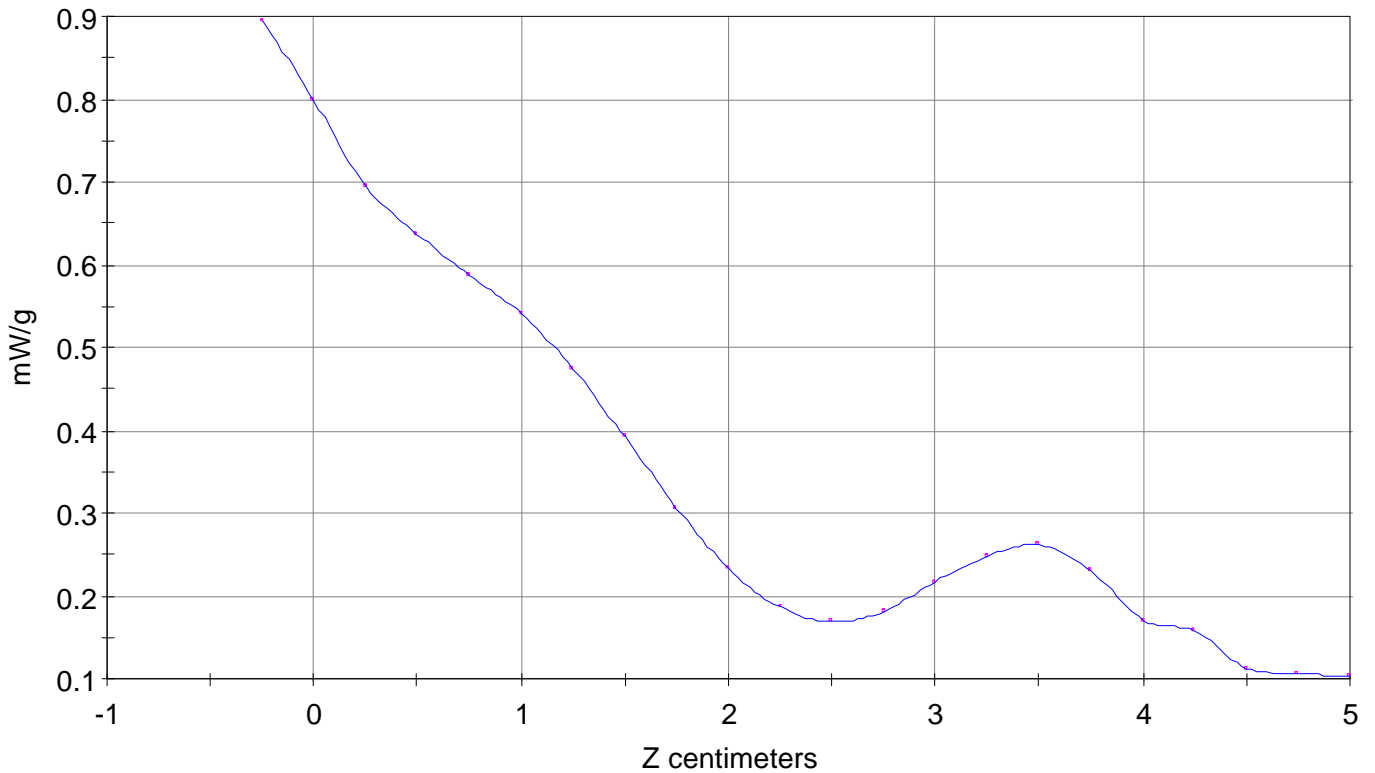
SAR Scan

File : 00112930_ZOOM

Start : 29-Nov-100 04:43:56 pm End : 29-Nov-100 04:54:49 pm

SANYO/C401SA/01;848.31MHz;W;Helical/In;

Body/Abdomen;ZOOM/SAR;PCTEST/E Field/0 DegreesMuscle/51.700/1.100

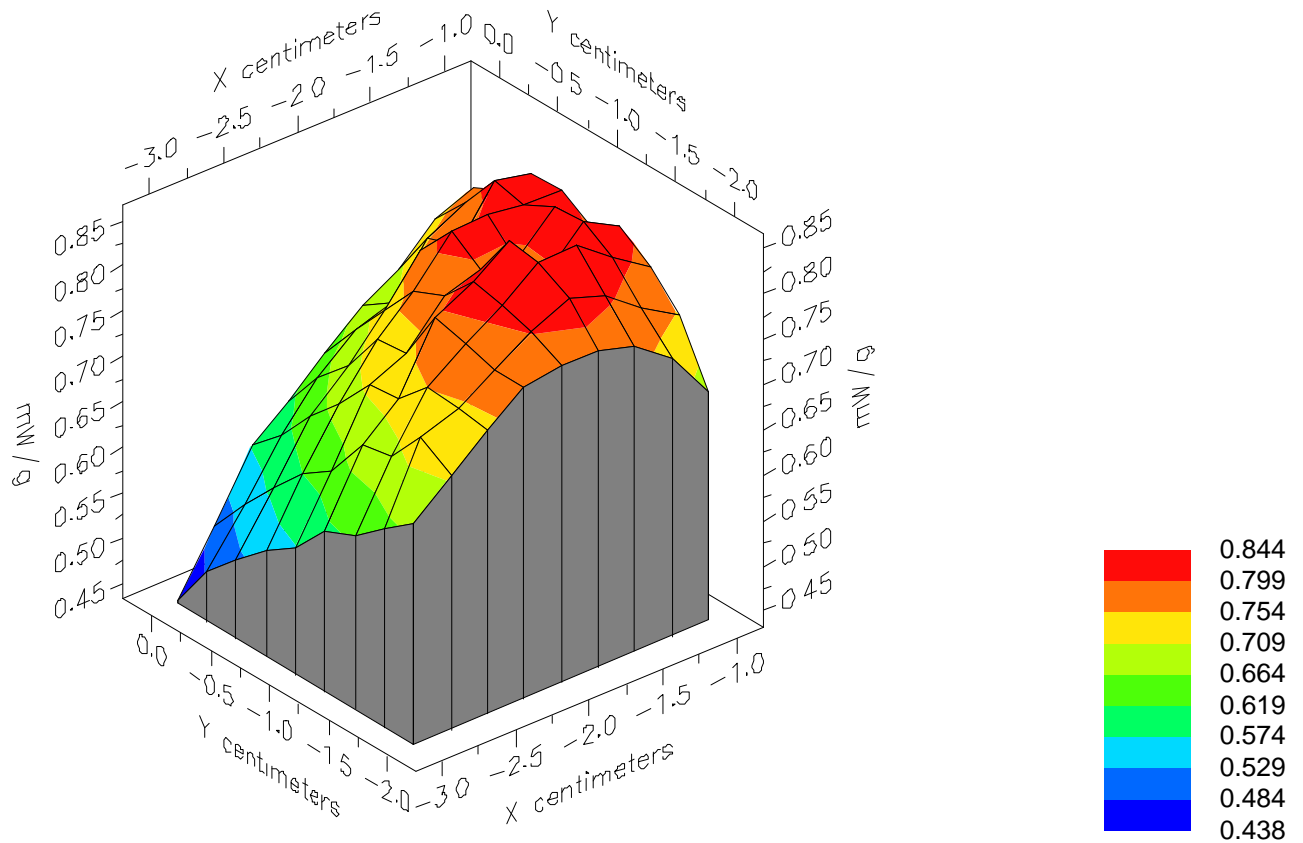


File : 00112930_ZOOM

Start : 29-Nov-100 04:43:56 pm End : 29-Nov-100 04:54:49 pm

SANYO/C401SA/01;848.31MHz;W;Helical/In;

Body/Abdomen;ZOOM/SAR;PCTEST/E Field/0 DegreesMuscle/51.700/1.100

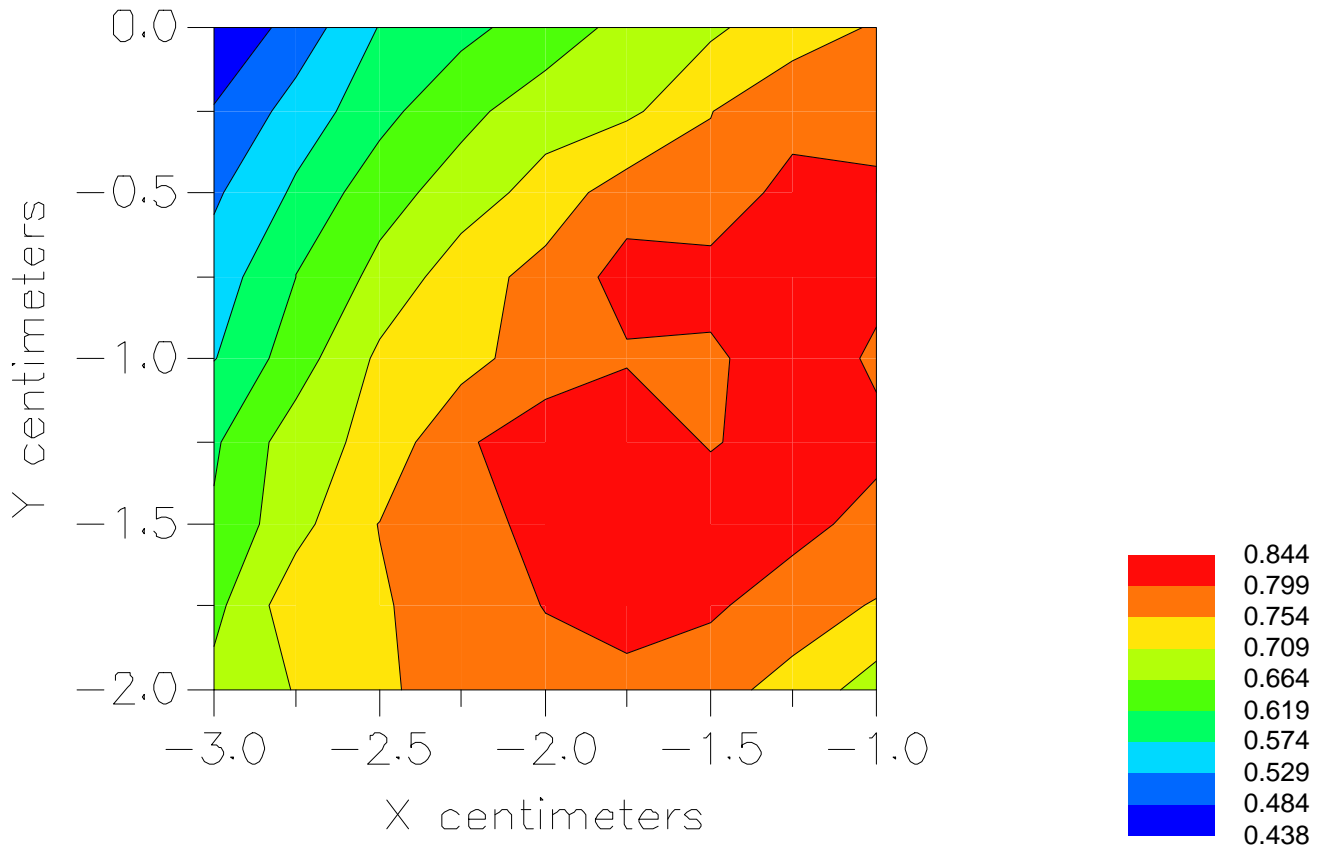


File : 00112930_ZOOM

Start : 29-Nov-100 04:43:56 pm End : 29-Nov-100 04:54:49 pm

SANYO/C401SA/01;848.31MHz;W;Helical/In;

Body/Abdomen;ZOOM/SAR;PCTEST/E Field/0 DegreesMuscle/51.700/1.100



File : c:/idx3/SYSTEM/SARMEAS3/data/Normal/00112929_ZOOM.VLT
Start : 29-Nov-100 04:30:43 pm End : 29-Nov-100 04:43:10 pm

Radio Type : SANYO
Model Number : C401SA
Serial Number : 01
Frequency : 848.31 MHz
Peak Trans. Pwr : 0.260 W
Start Trans. Pwr : 0.260 W
Antenna Type : Helical
Antenna Posn. : Out
Phantom Type : Body
Phantom Posn. : Abdomen
Scan Type : ZOOM/SAR
Probe Name : PCTEST
Field Type : E Field
Orientation : 0 Degrees

Mixture Type = Muscle
Mixture Dielectric Constant = 51.700
Mixture Conductivity = 1.100

Comment :
SANYO CDMA MODE PHONE - BODY SAR
CHAN 0777 Conducted 24.1 dBm
SANYO CDMA MODE PHONE

Robot : PCTEST

Probe Offset = 0.25 cm
Sensor Factor = 0.0108
Conversion Factor = 0.894

PCTEST Amplifier Channel Settings : 0.166 0.135 0.132

Max Location : X = -2.250, Y = -1.750, Z = 0.000 (cm) Value = 16.200

Measured Values (volts) =
1.658E-002 1.414E-002 1.314E-002 1.191E-002 1.064E-002 8.728E-003
6.860E-003 4.977E-003 3.622E-003 2.982E-003 3.112E-003 3.781E-003
4.667E-003 5.166E-003 4.823E-003 3.658E-003 2.983E-003 1.892E-003
1.664E-003 1.589E-003 1.464E-003

Calc. Voltage @ Surface (Vs) = 0.0186

Voltage @ 1.00 cm (Vt) = 0.0119

Ave. Voltage (Vs+Vt)/2 = 0.0153

Ave. SAR over 1 g (mW/g) = 1.2645

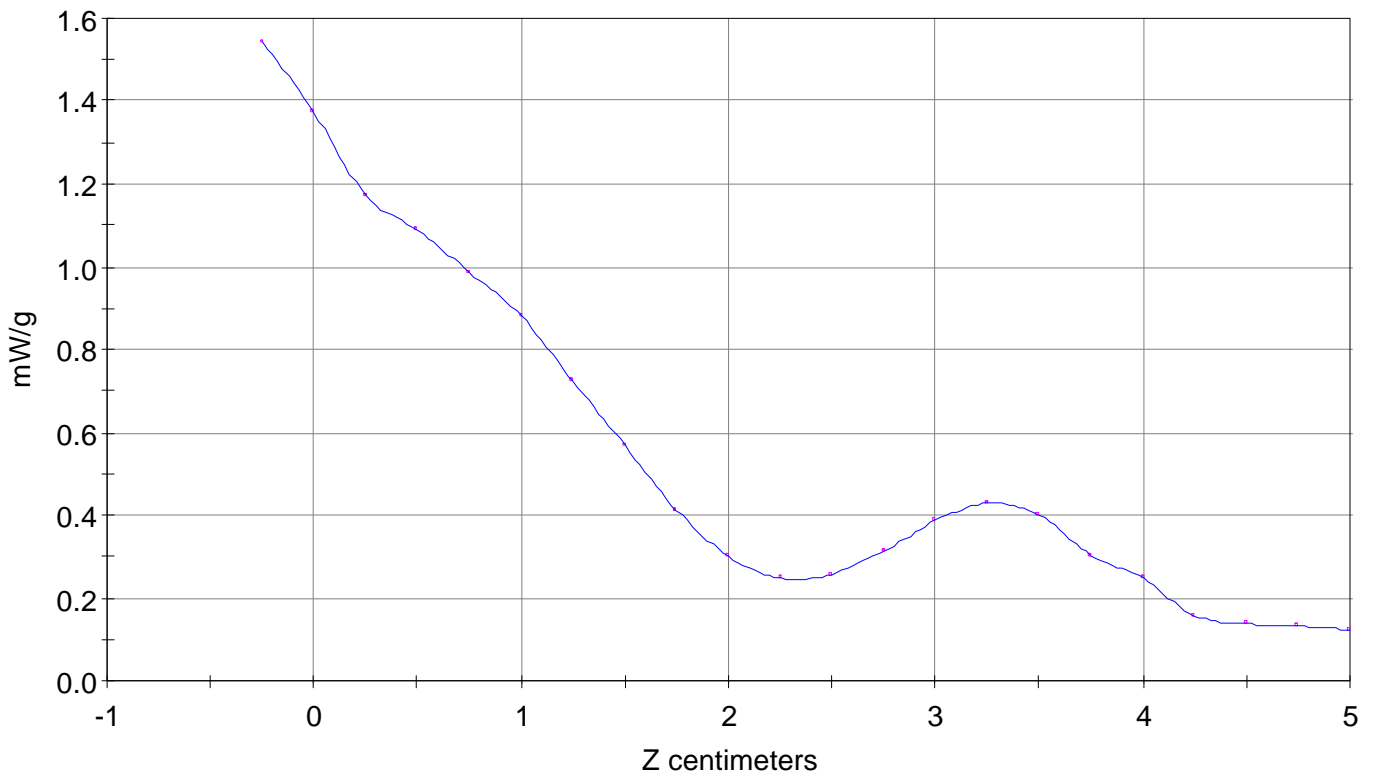
SAR Scan

File : 00112929_ZOOM

Start : 29-Nov-100 04:30:43 pm End : 29-Nov-100 04:43:10 pm

SANYO/C401SA/01;848.31MHz;W;Helical/Out;

Body/Abdomen;ZOOM/SAR;PCTEST/E Field/0 DegreesMuscle/51.700/1.100

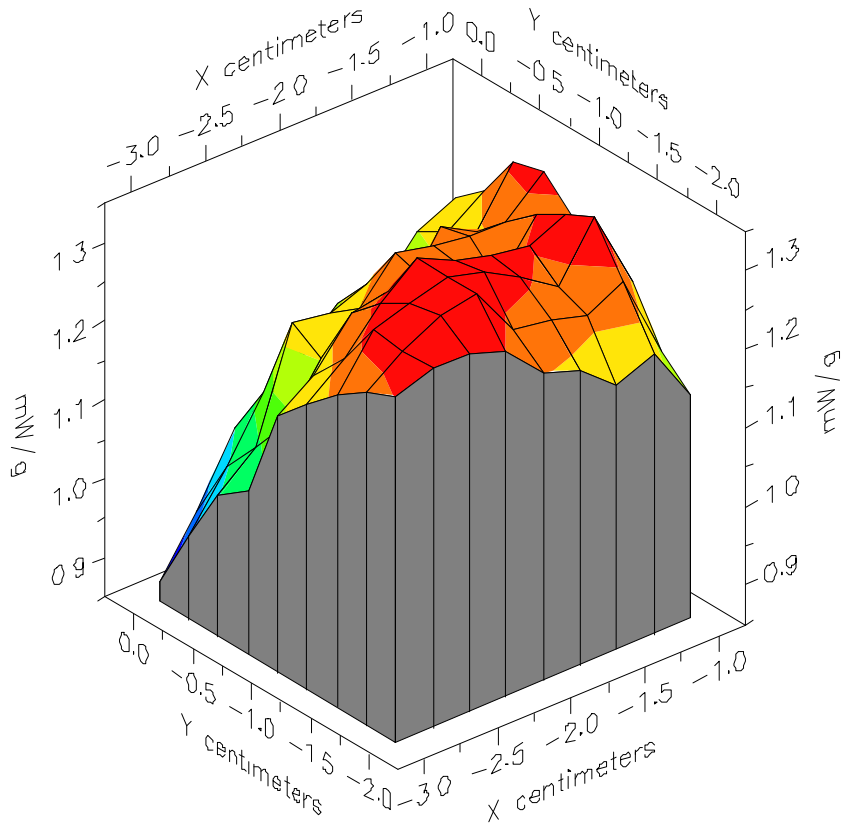


File : 00112929_ZOOM

Start : 29-Nov-100 04:30:43 pm End : 29-Nov-100 04:43:10 pm

SANYO/C401SA/01;848.31MHz;W;Helical/Out;

Body/Abdomen;ZOOM/SAR;PCTEST/E Field/0 DegreesMuscle/51.700/1.100



File : 00112929_ZOOM

Start : 29-Nov-100 04:30:43 pm End : 29-Nov-100 04:43:10 pm

SANYO/C401SA/01;848.31MHz;W;Helical/Out;

Body/Abdomen;ZOOM/SAR;PCTEST/E Field/0 DegreesMuscle/51.700/1.100

