

AEZC304SA

Generic Twin Phantom; Flat Section;

Probe: ET3DV5 - SN1370 -- Probe Cal Date 02/00

Medium Parameters 835 MHz Muscle: $\sigma = 0.95$ mho/m $\epsilon_r = 56.2$ $\rho = 1.00$ g/cm³

Antenna Position -- In; Crest Factor 1.0

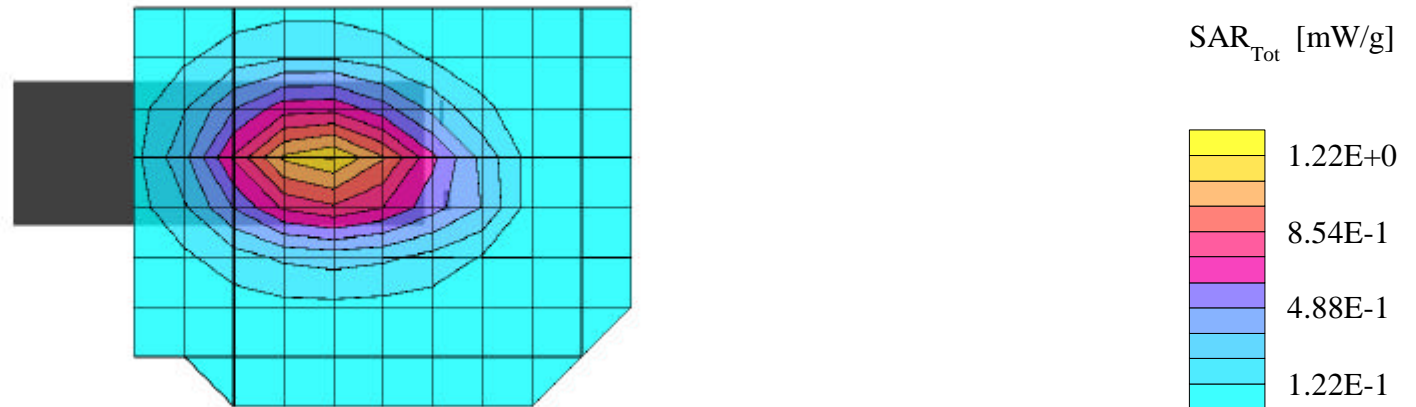
SAR (1g): 1.19 mW/g, SAR (10g): 0.822 mW/g

SANYO CDMA PHONE

CDMA Mode, Ch. 1013 (824.70 MHz)

Conducted Power = 23.dBm [flip mode]

Test Date - 04-18-2000 body sar 1cm spacing



AEZC304SA

Generic Twin Phantom; Flat Section;

Probe: ET3DV5 - SN1370 -- Probe Cal Date 02/00

Medium Parameters 835 MHz Muscle: $\sigma = 0.95$ mho/m $\epsilon_r = 56.2$ $\rho = 1.00$ g/cm³

Antenna Position -- Out; Crest Factor 1.0

SAR (1g): 1.02 mW/g, SAR (10g): 0.702 mW/g

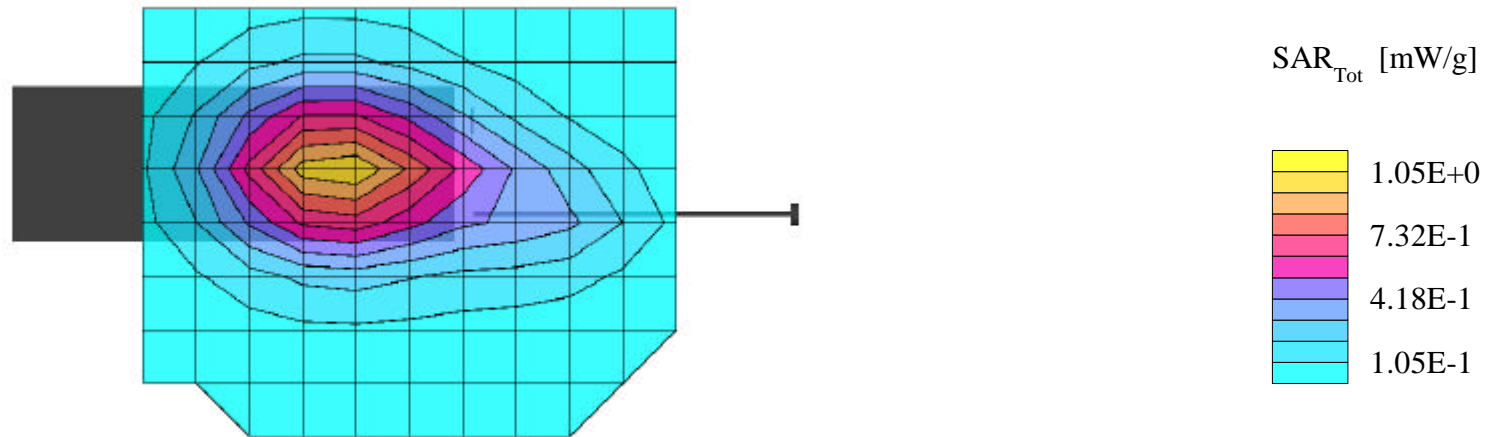
SANYO CDMA PHONE

CDMA MODE CH. 1013 (824.70 MHz)

TEST DATE 04-18-2000

Conducted Power = 23.dBm [flip mode]

Test Date - 04-18-2000 body sar 1cm spacing



AEZC304SA

Generic Twin Phantom; Flat Section;

Probe: ET3DV5 - SN1370 -- Probe Cal Date 02/00

Medium Parameters 835 MHz Muscle: $\sigma = 0.95$ mho/m $\epsilon_r = 56.2$ $\rho = 1.00$ g/cm³

Antenna Position -- In; Crest Factor 1.0

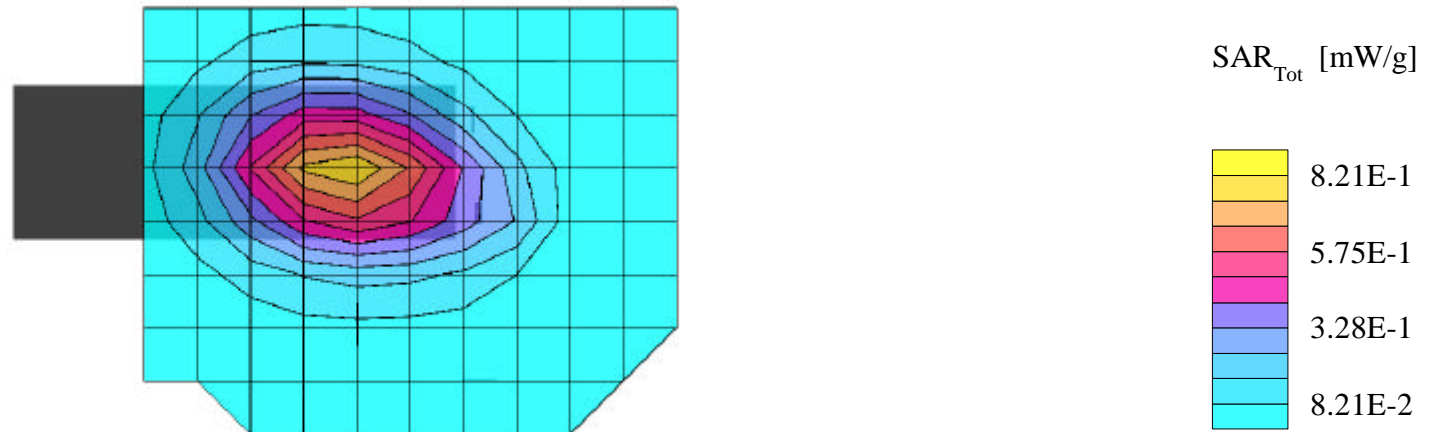
SAR (1g): 0.799 mW/g, SAR (10g): 0.553 mW/g

SANYO CDMA PHONE

CDMA Mode, Ch. 383 (836.49 MHz)

Conducted Power = 23.dBm [flip mode]

Test Date - 04-18-2000 body sar 1cm spacing



AEZC304SA

Generic Twin Phantom; Flat Section;

Probe: ET3DV5 - SN1370 -- Probe Cal Date 02/00

Medium Parameters 835 MHz Muscle: $\sigma = 0.95$ mho/m $\epsilon_r = 56.2$ $\rho = 1.00$ g/cm³

Antenna Position -- Out; Crest Factor 1.0

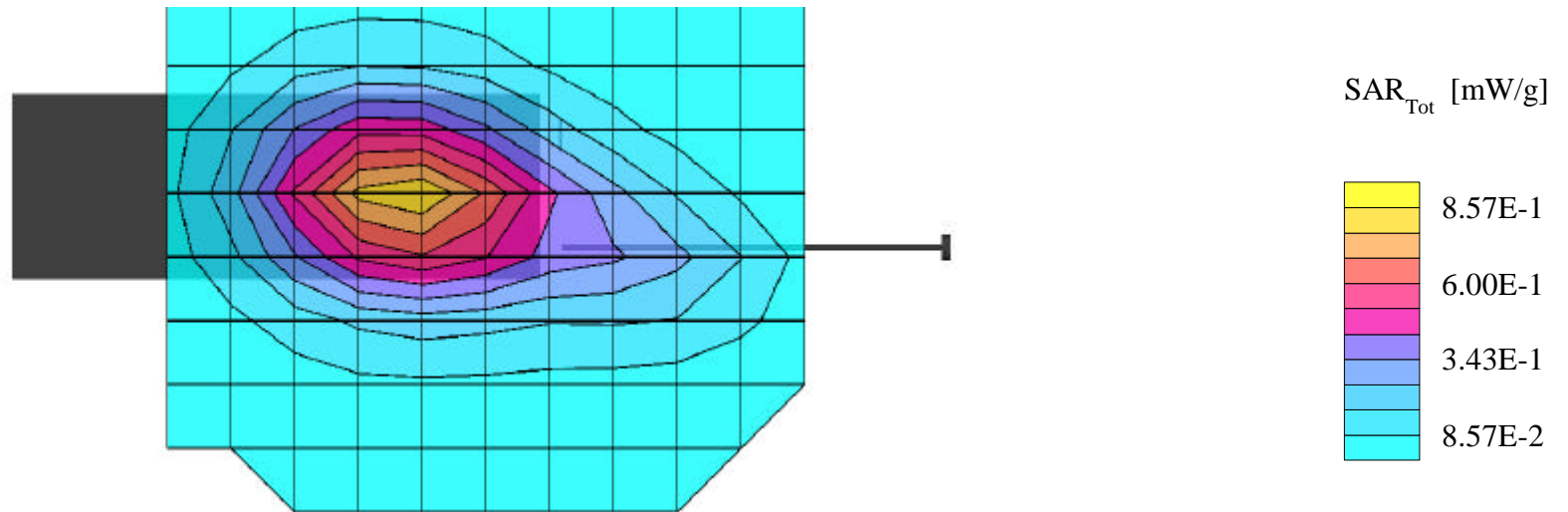
SAR (1g): 0.855 mW/g, SAR (10g): 0.591 mW/g

SANYO CDMA PHONE

CDMA Mode, Ch. 383 (836.49 MHz)

Conducted Power = 23.dBm [flip mode]

Test Date - 04-18-2000 body sar 1cm spacing



AEZC304SA

Generic Twin Phantom; Flat Section;

Probe: ET3DV5 - SN1370 -- Probe Cal Date 02/00

Medium Parameters 835 MHz Muscle: $\sigma = 0.95$ mho/m $\epsilon_r = 56.2$ $\rho = 1.00$ g/cm³

Antenna Position -- In; Crest Factor 1.0

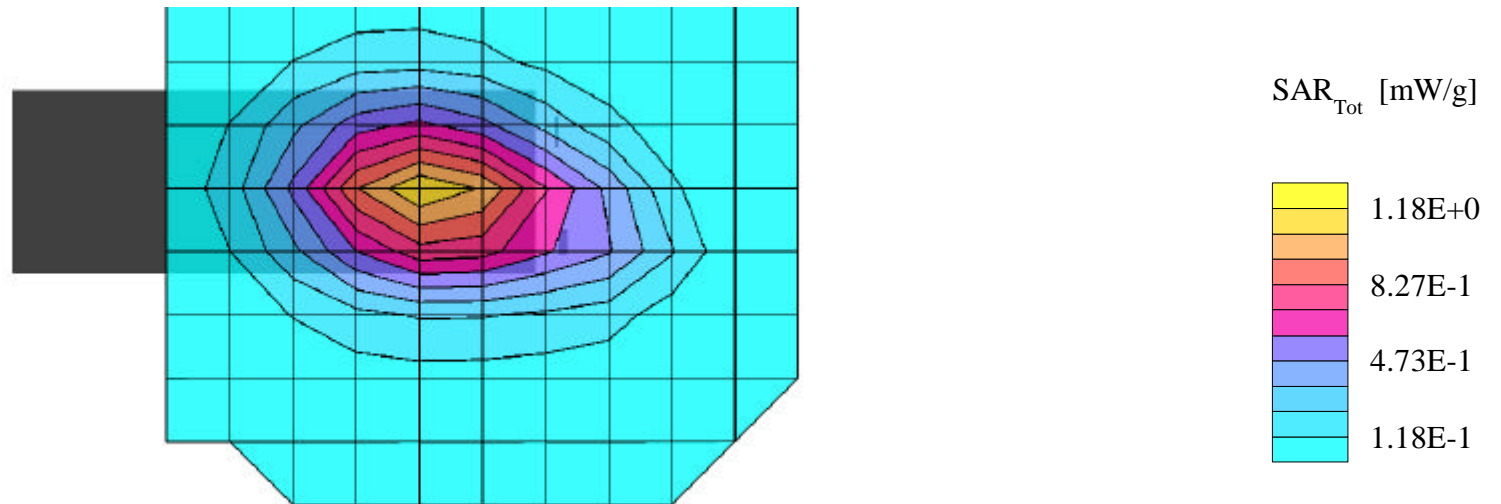
SAR (1g): 1.15 mW/g, SAR (10g): 0.790 mW/g

SANYO CDMA PHONE

CDMA Mode, Ch. 777 (848.31 MHz)

Conducted Power = 23.dBm [flip mode]

Test Date - 04-18-2000 body sar 1cm spacing



AEZC304SA

Generic Twin Phantom; Flat Section;

Probe: ET3DV5 - SN1370 -- Probe Cal Date 02/00

Medium Parameters 835 MHz Muscle: $\sigma = 0.95$ mho/m $\epsilon_r = 56.2$ $\rho = 1.00$ g/cm³

Antenna Position -- Out; Crest Factor 1.0

SAR (1g): 0.982 mW/g, SAR (10g): 0.669 mW/g

SANYO CDMA PHONE

CDMA Mode, Ch. 0777 (848.31 MHz)

Conducted Power = 23.dBm [flip mode]

Test Date - 04-18-2000 body sar 1cm spacing

