

AEZC304SA

Generic Twin Phantom; Right Hand Section;

Probe: ET3DV5 - SN1370 -- Probe Cal Date 02/00

Medium Parameters 835 MHz Brain: $\sigma = 0.86$ mho/m $\epsilon_r = 42.5$ $\rho = 1.00$ g/cm³

Antenna Position -- In; Crest Factor 1.0

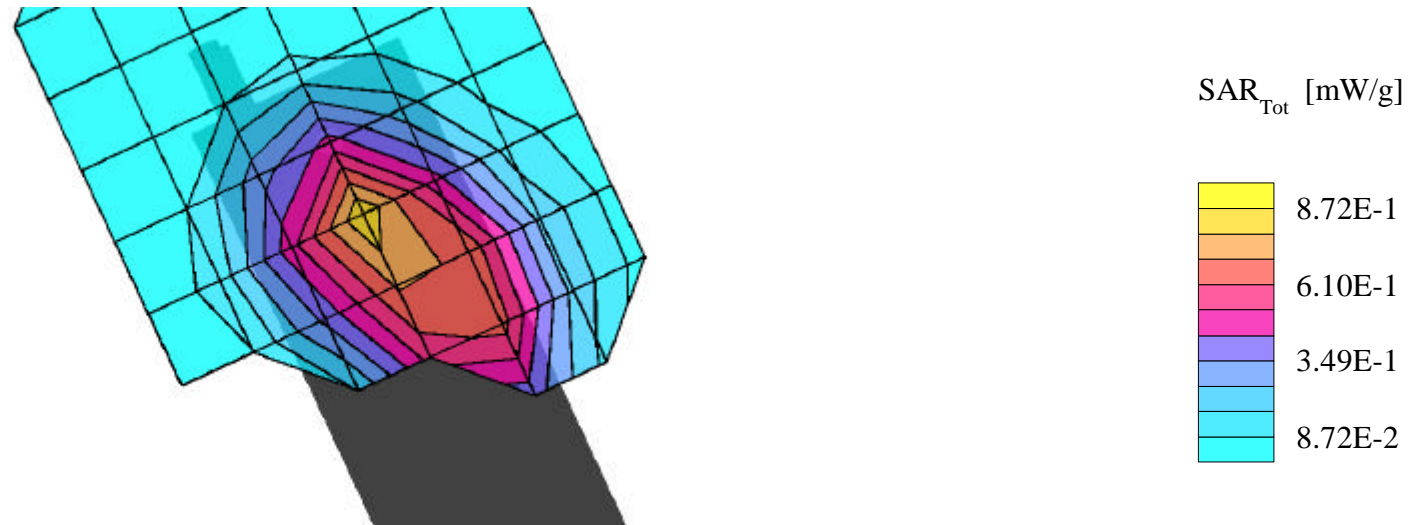
SAR (1g): 0.860 mW/g, SAR (10g): 0.556 mW/g

SANYO CDMA PHONE

CHAN 1013 (824.70 MHz)

conducted pwr 23.0 dBm

824.70 MHz



AEZC304SA

Generic Twin Phantom; Right Hand Section;

Probe: ET3DV5 - SN1370 -- Probe Cal Date 02/00

Medium Parameters 835 MHz Brain: $\sigma = 0.86$ mho/m $\epsilon_r = 42.5$ $\rho = 1.00$ g/cm³

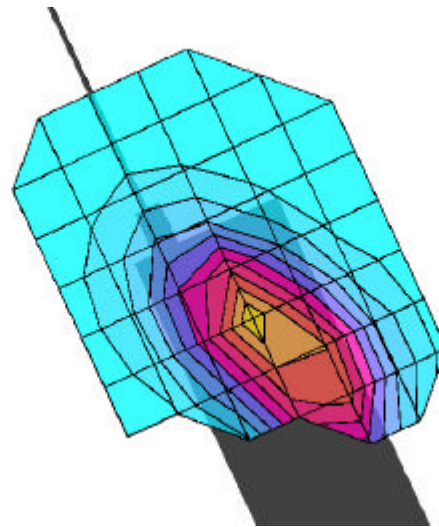
Antenna Position -- Out; Crest Factor 1.0

SAR (1g): 0.969 mW/g, SAR (10g): 0.622 mW/g

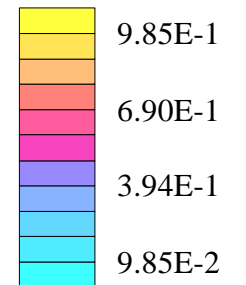
SANYO CDMA PHONE

CHAN 1013 (824.70 MHz)

conducted pwr 23.0dBm



SAR_{Tot} [mW/g]



AEZC304SA

Generic Twin Phantom; Right Hand Section;

Probe: ET3DV5 - SN1370 -- Probe Cal Date 02/00

Medium Parameters 835 MHz Brain: $\sigma = 0.86$ mho/m $\epsilon_r = 42.5$ $\rho = 1.00$ g/cm³

Antenna Position -- In; Crest Factor 1.0

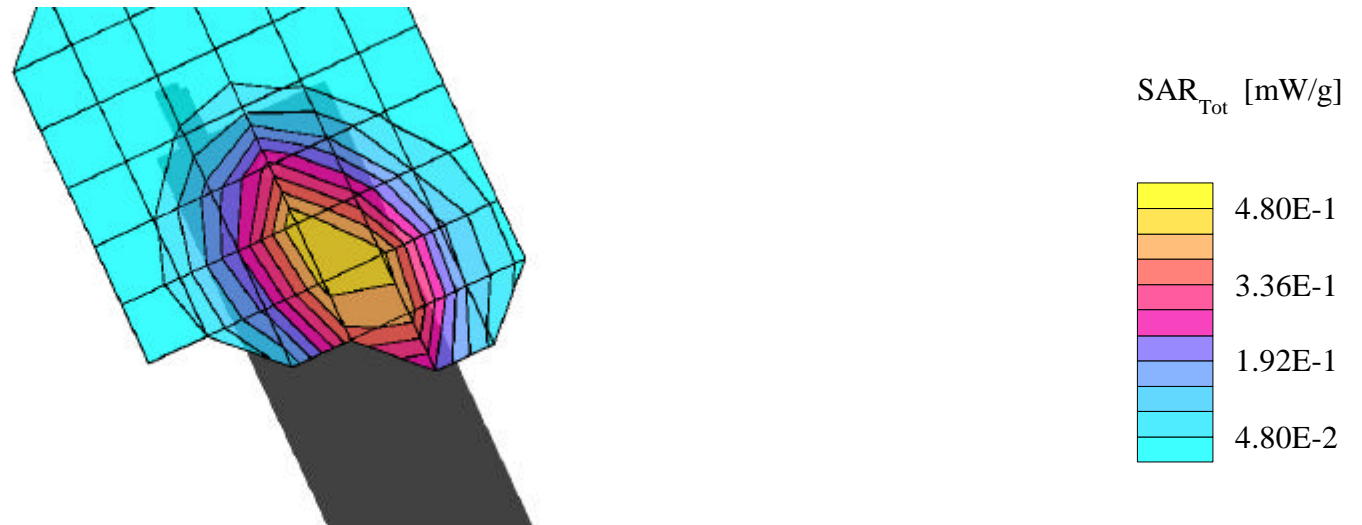
SAR (1g): 0.504 mW/g, SAR (10g): 0.357 mW/g

SANYO CDMA PHONE

CHAN 383 (836.49 MHz)

conducted pwr 23.0dBm

836.49 MHZ



AEZC304SA

Generic Twin Phantom; Right Hand Section;

Probe: ET3DV5 - SN1370 -- Probe Cal Date 02/00

Medium Parameters 835 MHz Brain: $\sigma = 0.86$ mho/m $\epsilon_r = 42.5$ $\rho = 1.00$ g/cm³

Antenna Position -- Out; Crest Factor 1.0

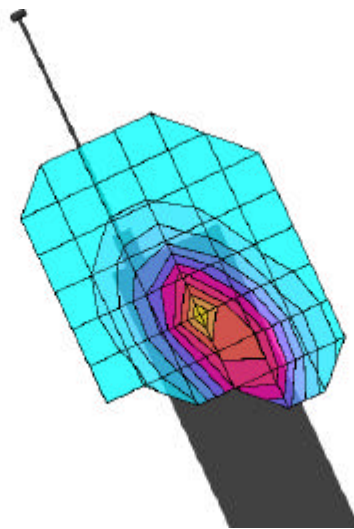
SAR (1g): 0.723 mW/g, SAR (10g): 0.454 mW/g

SANYO CDMA PHONE

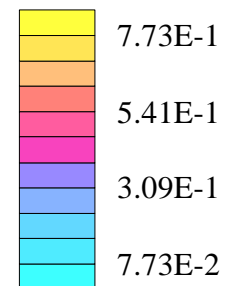
CHAN 383 (836.49 MHz)

conducted pwr 23.0dBm

836.49 MHZ



SAR_{Tot} [mW/g]



AEZC304SA

Generic Twin Phantom; Right Hand Section;

Probe: ET3DV5 - SN1370 -- Probe Cal Date 02/00

Medium Parameters 835 MHz Brain: $\sigma = 0.86$ mho/m $\epsilon_r = 42.5$ $\rho = 1.00$ g/cm³

Antenna Position -- In; Crest Factor 1.0

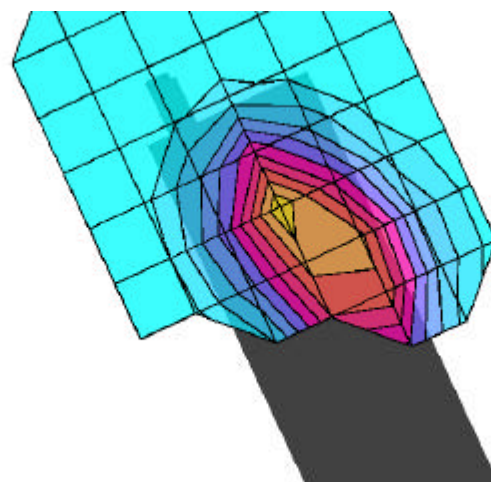
SAR (1g): 0.840 mW/g, SAR (10g): 0.542 mW/g

SANYO CDMA PHONE

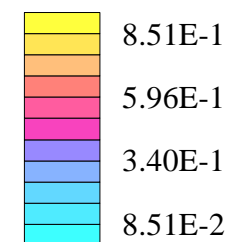
CHAN 777 (848.31 MHz)

conducted pwr 23.0dBm

848.31 MHZ



SAR_{Tot} [mW/g]



AEZC304SA

Generic Twin Phantom; Right Hand Section;

Probe: ET3DV5 - SN1370 -- Probe Cal Date 02/00

Medium Parameters 835 MHz Brain: $\sigma = 0.86$ mho/m $\epsilon_r = 42.5$ $\rho = 1.00$ g/cm³

Antenna Position -- Out; Crest Factor 1.0

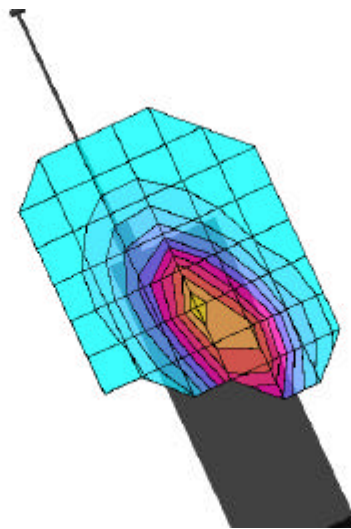
SAR (1g): 0.888 mW/g, SAR (10g): 0.564 mW/g

SANYO CDMA PHONE

CHAN 777 (848.31 MHz)

conducted pwr 23.0dBm

848.31



SAR_{Tot} [mW/g]

