

File : c:/idx3/SYSTEM/SARMEAS3/data/Normal/00010808_ZOOM.VLT
Start : 8-Jan-100 11:16:57 am End : 8-Jan-100 11:29:06 am

Radio Type : SANYO
FCC ID : AEZC112SA
Serial Number : 001
Frequency : 824.70 MHz
Peak Trans. Pwr : 0.225 W
Start Trans. Pwr : 0.225 W
Antenna Type : Helical
Antenna Posn. : In
Phantom Type : Body
Phantom Posn. : Abdomen
Scan Type : ZOOM/SAR
Probe Name : PCTEST
Field Type : E Field
Orientation : 0 Degrees

Mixture Type = Muscle
Mixture Dielectric Constant = 51.700
Mixture Conductivity = 1.100

Comment :
CDMA MODE PHONE
CHAN. 1013 flip mode
SINGLE BAND 1.5 cm SPACING

Robot : PCTEST

Probe Offset = 0.25 cm
Sensor Factor = 0.0108
Conversion Factor = 0.895

PCTEST Amplifier Channel Settings : 0.168 0.136 0.132

Max Location : X = 2.000, Y = -3.500, Z = 0.000 (cm) Value = 17.033

Measured Values (volts) =
1.645E-002 1.412E-002 1.166E-002 1.000E-002 8.295E-003 6.758E-003
5.394E-003 4.027E-003 3.000E-003 2.427E-003 2.268E-003 2.459E-003
2.601E-003 3.093E-003 3.152E-003 3.037E-003 2.327E-003 1.302E-003
9.526E-004 4.252E-004 3.147E-004

Calc. Voltage @ Surface (Vs) = 0.0195

Voltage @ 1.00 cm (Vt) = 0.0100

Ave. Voltage (Vs+Vt)/2 = 0.0148

Ave. SAR over 1 g (mW/g) = 1.2243

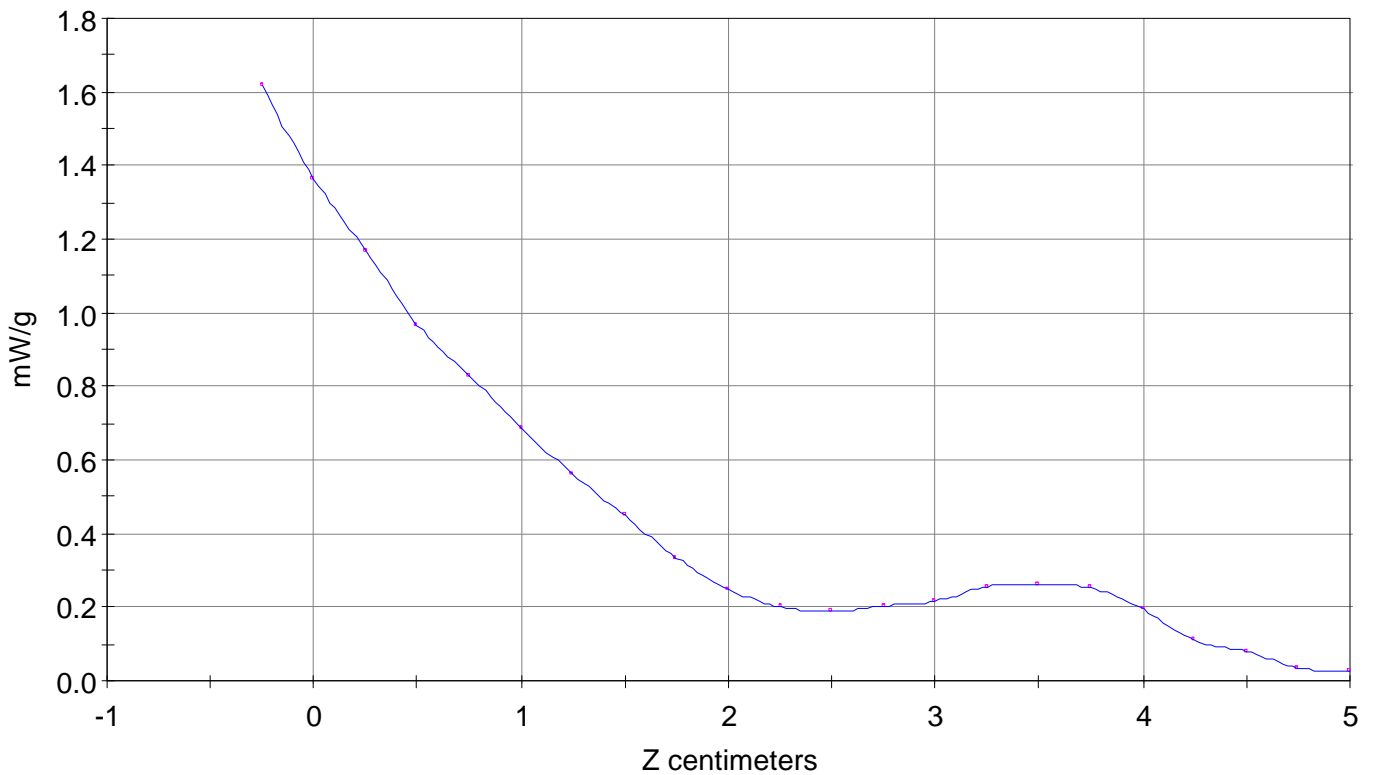
SAR Scan

File : 00010808_ZOOM

Start : 8-Jan-100 11:16:57 am End : 8-Jan-100 11:29:06 am

SANYO/C112SA/001;824.70MHz;W;Helical/In;

Body/Abdomen;ZOOM/SAR;PCTEST/E Field/0 DegreesMuscle/51.700/1.100

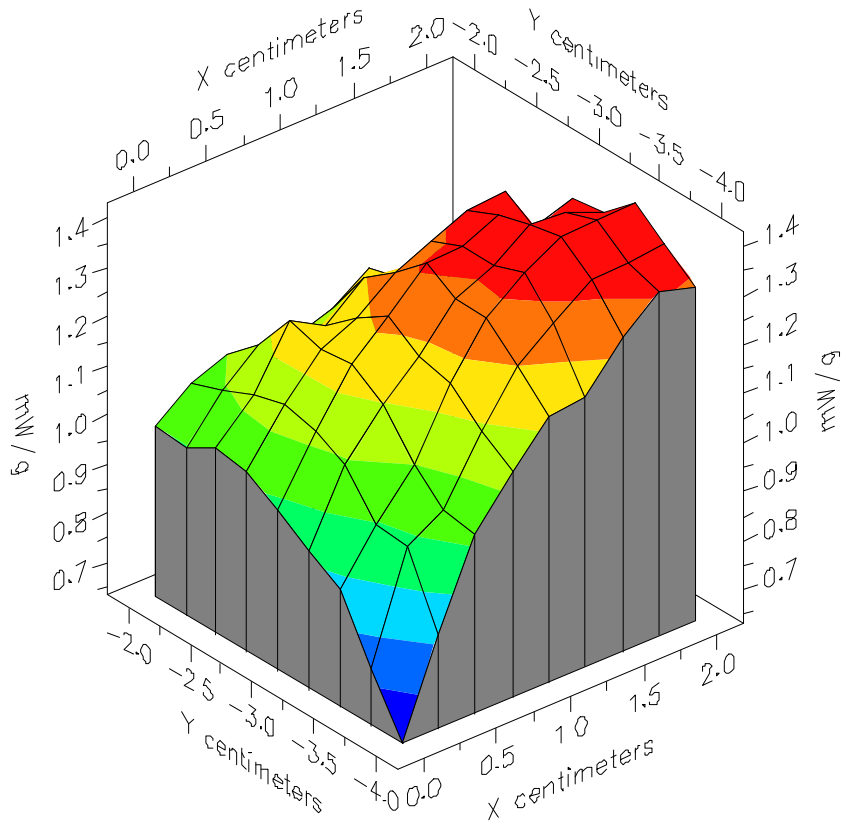


File : 00010808_ZOOM

Start : 8-Jan-100 11:16:57 am End : 8-Jan-100 11:29:06 am

SANYO/C112SA/001;824.70MHz;W;Helical/In;

Body/Abdomen;ZOOM/SAR;PCTEST/E Field/0 DegreesMuscle/51.700/1.100

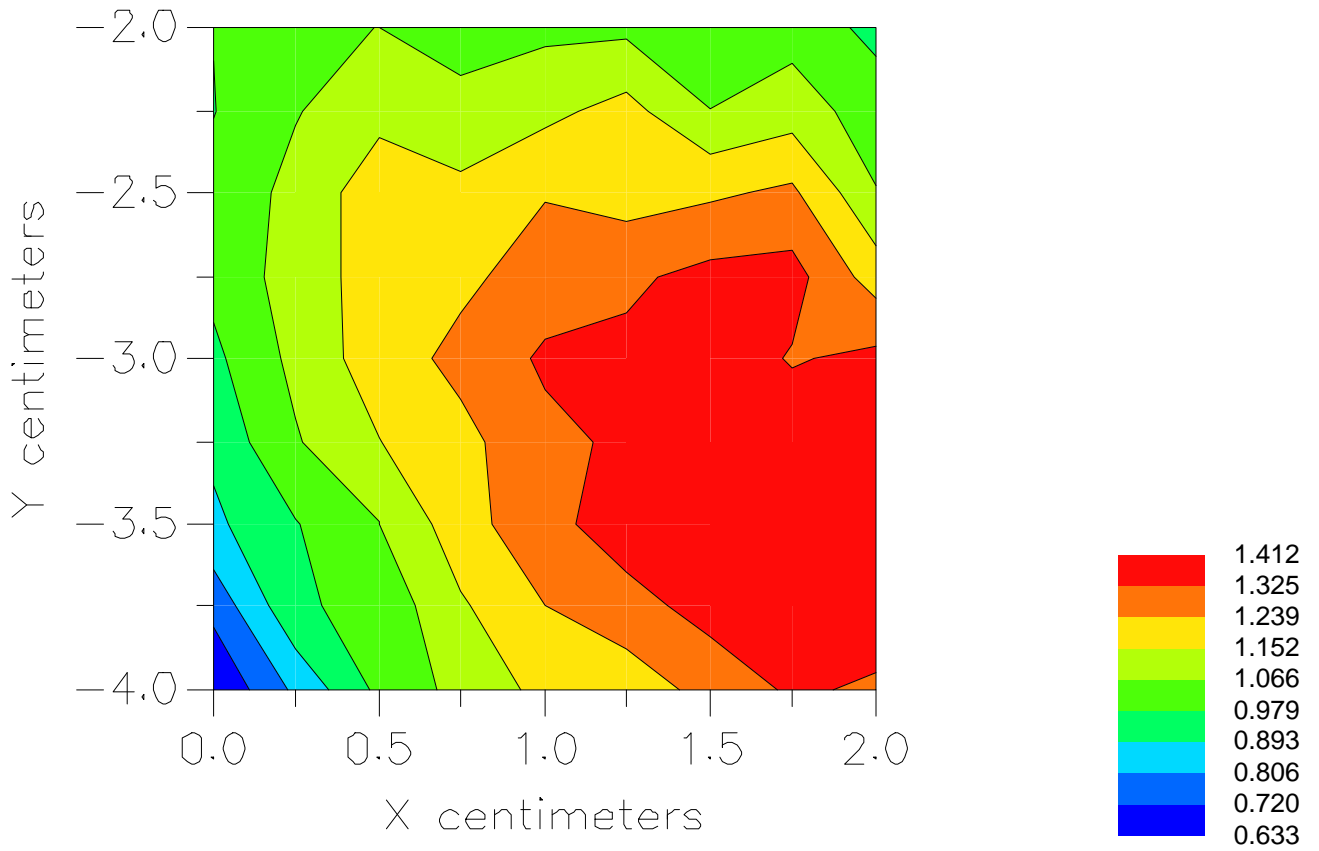


File : 00010808_ZOOM

Start : 8-Jan-100 11:16:57 am End : 8-Jan-100 11:29:06 am

SANYO/C112SA/001;824.70MHz;W;Helical/In;

Body/Abdomen;ZOOM/SAR;PCTEST/E Field/0 DegreesMuscle/51.700/1.100



File : c:/idx3/SYSTEM/SARMEAS3/data/Normal/00010807_ZOOM.VLT
Start : 8-Jan-100 11:02:32 am End : 8-Jan-100 11:14:44 am

Radio Type : SANYO
FCC ID : AEZC112SA
Serial Number : 001
Frequency : 824.70 MHz
Peak Trans. Pwr : 0.225 W
Start Trans. Pwr: 0.225 W
Antenna Type : Helical
Antenna Posn. : Out
Phantom Type : Body
Phantom Posn. : Abdomen
Scan Type : ZOOM/SAR
Probe Name : PCTEST
Field Type : E Field
Orientation : 0 Degrees

Mixture Type = Muscle
Mixture Dielectric Constant = 51.700
Mixture Conductivity = 1.100

Comment :
CDMA MODE PHONE
CHAN. 1013 flip mode
SINGLE BAND 1.5 cm SPACING

Robot : PCTEST

Probe Offset = 0.25 cm
Sensor Factor = 0.0108
Conversion Factor = 0.895

PCTEST Amplifier Channel Settings : 0.168 0.136 0.132

Max Location : X = 1.500, Y = -3.500, Z = 0.000 (cm) Value = 17.080

Measured Values (volts) =
1.648E-002 1.382E-002 1.230E-002 1.050E-002 8.663E-003 6.873E-003
5.203E-003 4.242E-003 3.055E-003 2.311E-003 1.951E-003 1.977E-003
2.204E-003 2.672E-003 3.066E-003 3.010E-003 2.512E-003 1.697E-003
8.915E-004 4.621E-004 3.620E-004

Calc. Voltage @ Surface (Vs) = 0.0191

Voltage @ 1.00 cm (Vt) = 0.0105

Ave. Voltage (Vs+Vt)/2 = 0.0148

Ave. SAR over 1 g (mW/g) = 1.2260

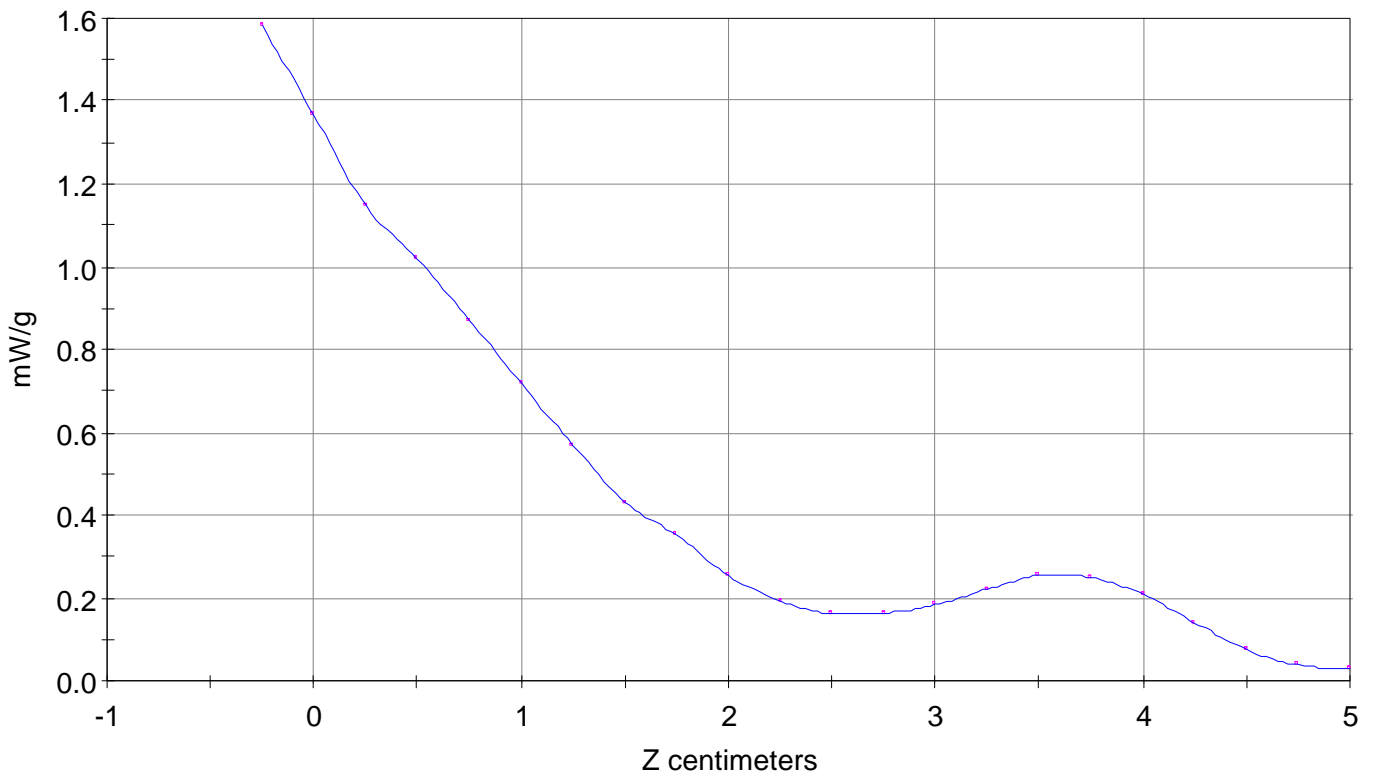
SAR Scan

File : 00010807_ZOOM

Start : 8-Jan-100 11:02:32 am End : 8-Jan-100 11:14:44 am

SANYO/C112SA/001;824.70MHz;W;Helical/Out;

Body/Abdomen;ZOOM/SAR;PCTEST/E Field/0 DegreesMuscle/51.700/1.100

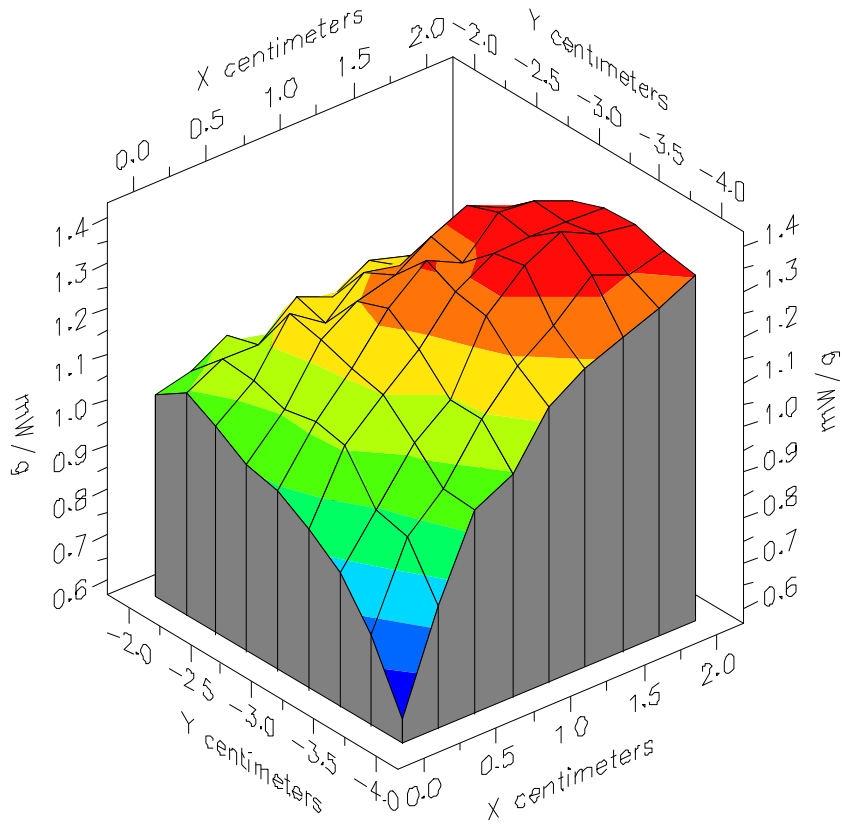


File : 00010807_ZOOM

Start : 8-Jan-100 11:02:32 am End : 8-Jan-100 11:14:44 am

SANYO/C112SA/001;824.70MHz;W;Helical/Out;

Body/Abdomen;ZOOM/SAR;PCTEST/E Field/0 DegreesMuscle/51.700/1.100



File : 00010807_ZOOM

Start : 8-Jan-100 11:02:32 am End : 8-Jan-100 11:14:44 am

SANYO/C112SA/001;824.70MHz;W;Helical/Out;

Body/Abdomen;ZOOM/SAR;PCTEST/E Field/0 DegreesMuscle/51.700/1.100

