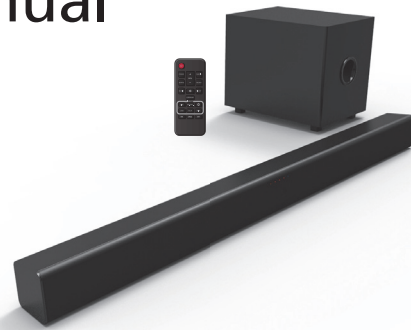




SOUNDBAR Setup Manual

FWSB426F



See the Online Owner's Manual for details:
sanyo-av.com

- 1 Please visit website sanyo-av.com
- 2 Select Download.
- 3 Type in the Model # "FWSB426F", and click "Search".
- 4 Select the Manual, and click on "Download".

SUPPLIED ACCESSORIES

- Remote Control (NC302UH) and Batteries (AAA, 1.5V x 2)
- Setup Manual
- Line-in Cable
- Digital Audio Optical Cable

Register Online at sanyo-av.com/support/ today to get the very most from your purchase.

Registering your model with SANYO makes you eligible for all of the valuable benefits such as software upgrades and important product notifications.

Register Online at sanyo-av.com/support/

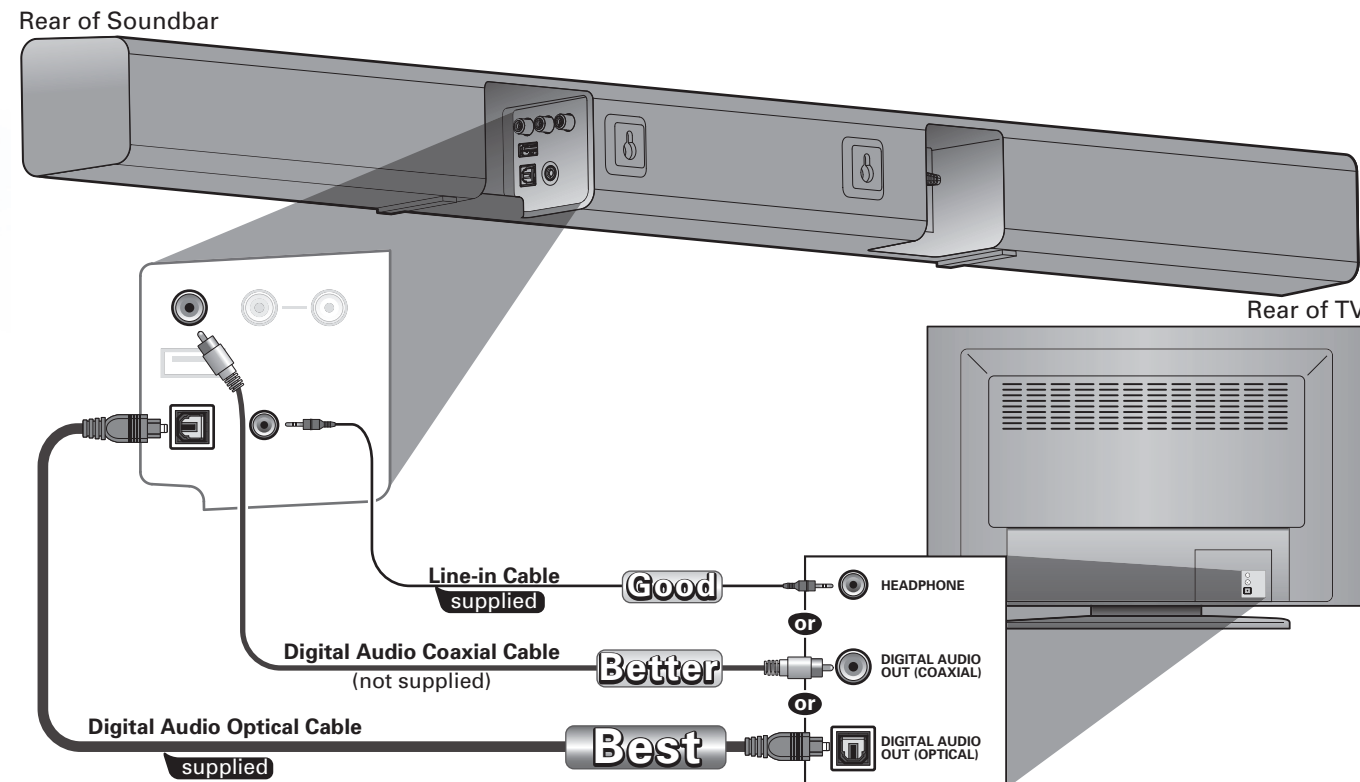
SANYO is a registered trademark of SANYO Electric Co., Ltd. and is used by Funai Electric Co., Ltd. and Funai Corporation, Inc. under license from SANYO Electric Co., Ltd. Any liability related to SANYO products, including design and quality, is the sole responsibility of Funai Electric Co., Ltd. and Funai Corporation, Inc. Please contact Funai Corporation, Inc. for any questions or claims related to SANYO products: sanyo-av.com



© 2016 Funai Electric Co., Ltd.
Printed in China
XHB00UH ★★★★★

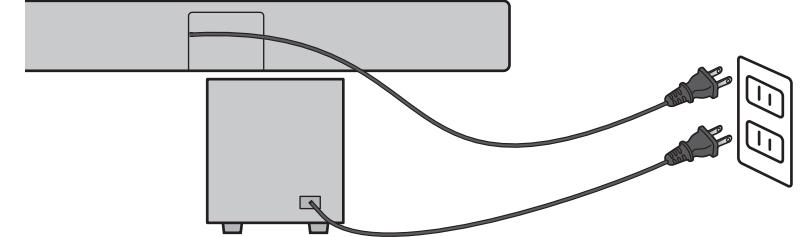
Connections

1 Connect the one of below cables/terminals between the device and your TV before plugged the AC plug.



If your TV does not have Audio Output jacks shown on upper left (AUX IN). Then to Connect the Soundbar directly to your other devices (Blu-ray player, Game system, etc.). See your device's User Manual.

2 Insert the AC Plug into an electrical outlet.



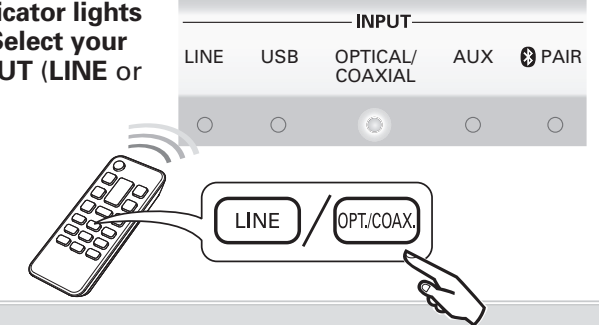
3 Turn Soundbar On using (POWER).

Check the LED behavior when the unit is turned On;

- If LED lights up, the unit is connected to the Subwoofer correctly.
- While LED is blinking, unit is not detecting the Subwoofer. (Refer to "Bluetooth Setting" for pairing the Subwoofer.)



4 The INPUT indicator lights up when you Select your connected INPUT (LINE or OPT./COAX.).



NOTE(s):

- Make sure the unit is Turned Off when Connecting.
- Check whether all Connection Cables are tightly connected.
- If you connect with a Line-In cable, make sure the Volume for the Headphone Output is the mid-range for the Soundbar Input. If the Line-In Volume is too low, the Soundbar may not Output Sounds with appropriate Volume.

Bluetooth Setting

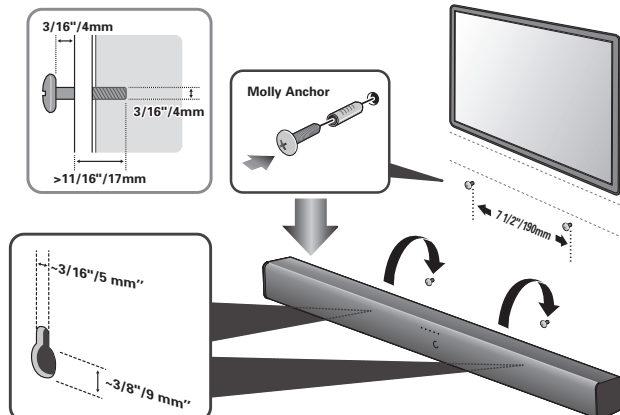
- 1 Press (Bluetooth Icon) on the Remote Control to switch the Soundbar to Bluetooth mode.
- 2 Turn On your Bluetooth compatible device.
- 3 On your Bluetooth compatible device search for and select "SANYO FWSB426F" to pair (or register) your Soundbar with your Bluetooth compatible device.
 - If a Passcode is requested, enter "0000."
 - If the Soundbar name does not appear on the Bluetooth compatible device, press (PAIR button) on the Remote Control.
- 4 Play music on the connected Bluetooth compatible device.
- 5 To Exit Bluetooth mode, press another Audio Input Source button on the Remote Control.



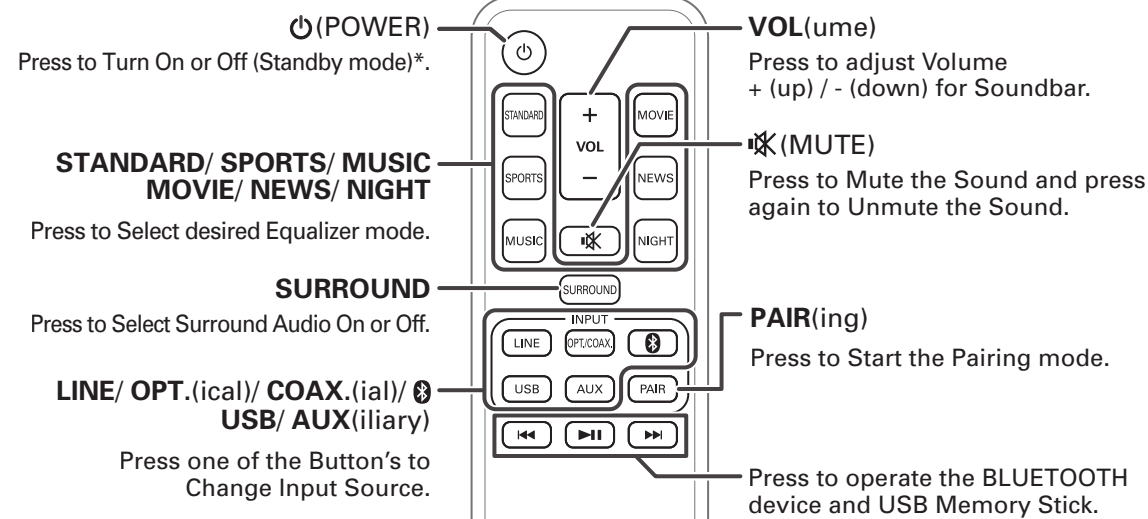
If reconnecting the Bluetooth device to the Soundbar fails, delete the registered profile of this Soundbar from the Bluetooth device, then perform pairing again. This unit can store up to 4 device profiles.

Mount Soundbar on a Wall

(Optional-refer to 'WALL MOUNT THE SOUNDBAR' on the Online Owner's Manual.)



Remote Control



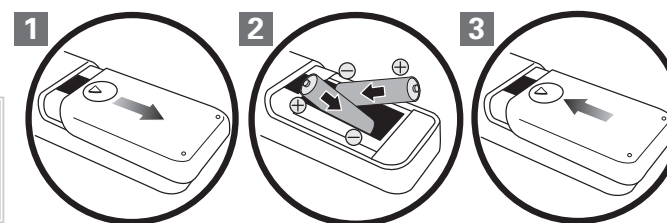
*Unplug the AC Power cord to Turn Off completely.

Insert Batteries

Install 2 AAA (1.5V) batteries (supplied)

NOTE(s):

- Do not mix old and new batteries.
- Do not mix alkaline, standard (carbon-zinc) or rechargeable (ni-cad, ni-mh, etc.) batteries.



Troubleshooting

	Problem	Tip
Sound	No Power	• Unplug AC Cord, then wait 20 sec. and then plug it in again.
	No Sound / Distorted sound	• Make sure the TV, other Devices and Soundbar are all Turned On. • Make sure Unit is Connected to Audio Output on your device. • Press Source button on your Soundbar Remote Control to select the correct Audio Input. • Confirm that the Soundbar is not Muted. Press VOL +/- to unmute the Sound. (See 'Adjust the Volume' on the Online Owner's Manual.) • Adjust the Sound Settings on your Connected device. • Adjust the Headphone Volume on some TV's if you connect this Unit to the Headphone jack on your TV using the Supplied 3.5mm Line-In cable.
Remote	No Sound from Sub Woofer	• Press PAIR button on the Rear side of Subwoofer and AUX then PAIR on the Remote Control at the same time to Reconnect Soundbar.
	No reaction to the remote control.	• Check the Batteries in Remote Control and make sure they are Inserted properly using + or - symbols. • Aim Remote at the Center of this Unit. • Use a Digital or Phone Camera pointing the Remote Control at the Camera Lens and press any Remote button. If Remote IR LED(s) flash on Camera Display, then the Remote is Transmitting a Signal. Some Phone Cameras have IR filters in their Lens, therefore you will not see the IR LED(s) flash.
Bluetooth	An external device cannot connect with the Soundbar via Bluetooth.	• Confirm that Bluetooth is Enabled on the external device. See the Owner's Manual on the external device on how to enable Bluetooth. • Another Bluetooth device is already connected to the Soundbar. Disconnect the connected device, then try again.
	Unstable connection between the Bluetooth device and the Soundbar.	• The Bluetooth reception may be poor. Confirm that there is no obstacle between the Bluetooth device and the Soundbar. If this does not improve the Sound quality, move the Bluetooth device closer to the Soundbar.

Safety Instruction

The model and serial numbers of this unit may be found on the cabinet. You should record and retain those numbers for future reference.

Model No.:
Serial No.:

WARNING:

TO REDUCE THE RISK OF FIRE OR ELECTRIC SHOCK, DO NOT EXPOSE THIS APPARATUS TO RAIN OR MOISTURE. APPARATUS SHALL NOT BE EXPOSED TO DRIPPING OR SPLASHING AND NO OBJECTS FILLED WITH LIQUIDS, SUCH AS VASES, SHALL BE PLACED ON THE APPARATUS.



CAUTION

RISK OF ELECTRIC SHOCK
DO NOT OPEN



CAUTION:

TO REDUCE THE RISK OF ELECTRIC SHOCK, DO NOT REMOVE COVER (OR BACK). NO USER SERVICEABLE PARTS INSIDE. REFER SERVICING TO QUALIFIED SERVICE PERSONNEL.

The important note and rating are located on the rear or bottom of the cabinet.



The lightning flash with arrowhead symbol, within an equilateral triangle, is intended to alert the user to the presence of uninsulated "dangerous voltage" within the product's enclosure that may be of sufficient magnitude to constitute a risk of electric shock to persons.



The exclamation point within an equilateral triangle is intended to alert the user to the presence of important operating and maintenance (servicing) instructions in the literature accompanying the appliance.

The symbol for CLASS II (Double Insulation)

IMPORTANT SAFETY INSTRUCTIONS

1. Read these instructions.
2. Keep these instructions.
3. Heed all warnings.
4. Follow all instructions.
5. Do not use this apparatus near water.
6. Clean only with dry cloth.
7. Do not block any ventilation openings. Install in accordance with the manufacturer's instructions.
8. Do not install near any heat sources such as radiators, heat registers, stoves, or other apparatus (including amplifiers) that produce heat.
9. Do not defeat the safety purpose of the polarized or grounding-type plug. A polarized plug has two blades with one wider than the other. A grounding type plug has two blades and a third grounding prong. The wide blade or the third prong are provided for your safety. If the provided plug does not fit into your outlet, consult an electrician for replacement of the obsolete outlet.
10. Protect the power cord from being walked on or pinched particularly at plugs, convenience receptacles, and the point where they exit from the apparatus.
11. Only use attachments/accessories specified by the manufacturer.
12. Use only with the cart, stand, tripod, bracket, or table specified by the manufacturer, or sold with the apparatus. When a cart is used, use caution when moving the cart / apparatus combination to avoid injury from tip-over.
13. Unplug this apparatus during lightning storms or when unused for long periods of time.
14. Refer all servicing to qualified service personnel. Servicing is required when the apparatus has been damaged in any way, such as power-supply cord or plug is damaged, liquid has been spilled or objects have fallen into the apparatus, the apparatus has been exposed to rain or moisture, does not operate normally, or has been dropped.



FCC WARNING

This equipment may generate or use radio frequency energy. Changes or modifications to this equipment may cause harmful interference unless the modifications are expressly approved in the manual. The user could lose the authority to operate this equipment if an unauthorized change or modification is made.

RADIO-TV INTERFERENCE

This equipment has been tested and found to comply with the limits for a Class B digital device, pursuant to Part 15 of the FCC Rules. These limits are designed to provide reasonable protection against harmful interference in a residential installation. This equipment generates, uses, and can radiate radio frequency energy and, if not installed and used in accordance with the instructions, may cause harmful interference to radio communications. However, there is no guarantee that interference will not occur in a particular installation. If this equipment does cause harmful interference to radio or television reception, which can be determined by turning the equipment off and on, the user is encouraged to try to correct the interference by one or more of the following measures:

1. Reorient or relocate the receiving antenna.
2. Increase the separation between the equipment and receiver.
3. Connect the equipment into an outlet on a circuit different from that to which the receiver is connected.
4. Consult the dealer or an experienced radio / TV technician for help.

Disconnect the AC plug to shut Off the Unit when Trouble is found or not in Use. The AC plug shall remain readily operable and available.

CAUTION: Danger of explosion if battery is incorrectly replaced. Replace only with the same or equivalent type.
WARNING: Batteries (Battery pack or battery installed) shall not be exposed to excessive heat such as sunshine, fire or the like.

Do not place the unit on the furniture that is capable of being tilted by a child and an adult leaning, pulling, standing or climbing on it. A falling unit can cause serious injury or even death.

This apparatus should not be placed in a built-in installation such as a bookcase or rack unless proper ventilation is provided. Make sure to leave a space of 3.9 inches (10cm) or more around this apparatus.

Never use a gas duster on this unit.
The gas trapped inside of this unit may cause ignition and explosion.

This transmitter must not be co-located or operated in conjunction with any other antenna or transmitter.

Mount Soundbar on a Wall

- The recommended screw (sold separately) allows the mounting of the Soundbar on the Wall.
- Funai is not liable for any accident, damage or injury due to any improper installation, lack of strength of installation or improper use.
- Drill screw holes into the wall. Depending on the wall material, use Molly Anchor inserts to make sure the screws will not fall out. Although the Soundbar weighs approximately 4 1/2 lb/2 kg, it is recommended that the wall be able to support 13 1/2 lb/ 6 kg (three times the weight of the Soundbar) for extra safety. Recommended measurements are as follows: Wall thickness of 2"/5 cm or more, Screw diameter of 3/16"/4 mm and Screw length of 1"/25 mm or more.
- Screw and Molly Anchor are sold separately and is not supplied.

Funai is not liable for these types kinds of accidents or injury noted below.

- Install two screws on a sturdy vertical wall.
- If installed onto a ceiling or slanted wall, the Soundbar and screws may fall which could result in a severe injury.
- Do not use screws that are longer or shorter than their specified length. If screws too long or short are used this may cause the Soundbar to fall.
- Do not fasten Screw's and Molly Anchor's with excessive force, this may damage the Wall causing the Soundbar to fall, leading to an injury.
- Do not mount the Soundbar onto screws while the Soundbar is Plugged In or turned On. It may result in an electrical shock injury.

When Installing the Soundbar on a Wall, allow this much space.

Top: 4"(10 cm)
Left and right sides: 4"(10 cm)
Bottom: 4"(10 cm)
Space between Mounting Screw and Wall: 3/16"(4mm)

Trademark Information



The Bluetooth® word mark and logos are registered trademarks owned by Bluetooth SIG, Inc. and any use of such marks by Funai Electric Co., Ltd. is under license. Other trademarks and trade names are those of their respective owners.



Manufactured under license from Dolby Laboratories. Dolby, Dolby Audio, and the double-D symbol are trademarks of Dolby Laboratories.

Servicing

If this unit becomes inoperative, do not try to correct the problem by yourself. There are no user-serviceable parts inside.

Place the unit into standby mode, unplug the power plug, and then please visit: sanyo-av.com

SPECIFICATIONS

General	
Power requirements	120V AC +/- 10%, 60Hz +/- 0.5%
Output power	80W (Front L/R speaker: 40W, Subwoofer: 40W)
Dimensions (width x height x depth)	Soundbar 39.3 x 3.1 x 3.1 inches (999 x 77 x 77 mm) Subwoofer 8.6 x 10.0 x 11.9 inches (216 x 255 x 300 mm)
Weight	Soundbar 5.19 lbs. (2.35kg) Subwoofer 8.38 lbs. (3.80kg)
Bluetooth	Bluetooth profile : A2DP, AVRCP Bluetooth version : 4.1+EDR
Optical Input	Linear PCM (LPCM) 96kHz 24bit Max

Note

- The specifications and design of this product are subject to change without notice.



For product recycling information, please visit - sanyo-av.com

Click on



See the Online Owner's Manual for details:
sanyo-av.com/support/

Warranty

NINETY (90) DAY LABOR / ONE (1) YEAR PARTS

WARRANTY COVERAGE:

This warranty obligation is limited to the terms as set forth below.

WHO IS COVERED:

This product warranty is issued to the original purchaser or the person receiving the product as a gift against defects in materials and workmanship as based on the date of original purchase ("Warranty Period") from an Authorized Dealer. The original sales receipt showing the product name and the purchase date from an authorized retailer is considered such proof.

WHAT IS COVERED:

This warranty covers new products if a defect in material or workmanship occurs and a valid claim is received within the Warranty Period. At its option, the company will either (1) repair the product at no charge, using new or refurbished replacement parts, or (2) exchange the product with a new or refurbished product at company's option. Replacement products or parts provided under this warranty are covered against defects in materials and workmanship from the date of the replacement or repair for ninety (90) days or for the remaining portion of the original product's warranty, whichever provides longer coverage for you. When a product or part is exchanged, any replacement item becomes your property and the replaced item becomes company property. When a refund is given, your product becomes company property. Note: Any product sold and identified as refurbished or renewed carries a ninety (90) day limited warranty.

Replacement product can only be sent if all warranty requirements are met. Failure to follow all requirements can result in delay.

WHAT IS NOT COVERED - EXCLUSIONS AND LIMITATIONS:

This Limited Warranty applies only to new company manufactured products that can be identified by the trademark, trade name, or logo affixed to it. This Limited Warranty does not apply to any hardware product or any software, even if packaged or sold with the product, as manufacturers, suppliers, or publishers may provide a separate warranty for their own products packaged with the bundled product.

The company is not liable for any damage to or loss of any programs, data, or other information stored on any media contained within the product, or other additional product or part not covered by this warranty. Recovery or reinstallation of programs, data or other information is not covered under this Limited Warranty.

This warranty does not apply (a) to damage caused by accident, abuse, misuse, neglect, misapplication, or non-supplied product, (b) to damage caused by service performed by anyone other than company approved Authorized Service Location, (c) to a product or a part that has been modified without written company permission, or (d) if any serial number has been removed or defaced, or (e) product, accessories or consumables sold "AS IS" without warranty of any kind by including refurbished product sold "AS IS" by some retailers.

This Limited Warranty does not cover:

- Shipping costs for returning defective product.
- Labor charges for installation or setup of the product, adjustment of customer controls on the product, and installation or repair of antenna/signal source systems outside of the product.
- Product repair and/or part replacement because of improper installation or maintenance, connections to improper voltage supply, power line surge, lightning damage, retained images or screen markings resulting from viewing fixed stationary content for extended periods, product cosmetic appearance items due to normal wear and tear, unauthorized repair or other cause not within the control of the company.
- Damage or claims for products not being available for use, or for lost data or lost software.
- Damage from mishandled shipments or transit accidents when returning product.
- A product that requires modification or adaptation to enable it to operate in any country other than the country for which it was designed, manufactured, approved and/or authorized, or repair of products damaged by these modifications.
- A product used for commercial or institutional purposes (including but not limited to rental purposes).
- Product lost in shipment and no signature verification receipt can be provided.
- Failure to operate per Owner's Manual.

TO OBTAIN ASSISTANCE...

Contact the Customer Care Center at: sanyo-av.com
1 866 212 0436

REPAIR OR REPLACEMENT AS PROVIDED UNDER THIS WARRANTY IS THE EXCLUSIVE REMEDY FOR THE CONSUMER, WITH THE ISSUING COMPANY NOT LIABLE FOR ANY INCIDENTAL OR CONSEQUENTIAL DAMAGES FOR BREACH OF ANY EXPRESS OR IMPLIED WARRANTY ON THIS PRODUCT, EXCEPT TO THE EXTENT PROHIBITED BY APPLICABLE LAW, ANY IMPLIED WARRANTY OF MERCHANTABILITY OR FITNESS FOR A PARTICULAR PURPOSE ON THIS PRODUCT IS LIMITED IN DURATION TO THE DURATION OF THIS WARRANTY.

Some states do not allow the exclusions or limitation of incidental or consequential damages, or allow limitations on how long an implied warranty lasts, so the above limitations or exclusions may not apply to you.

This warranty gives you specific legal rights. You may have other rights which vary from state/province to state/province.

FUNAI CORPORATION, Inc. 19900 Van Ness Avenue, Torrance, CA 90501

ESPAÑOL

INSTRUCCIONES DE SEGURIDAD

El modelo y el número de serie de esta unidad se pueden encontrar en la caja. Deberá anotar y guardar el modelo y el número de serie para consultarlos, si los necesita, en el futuro.

Número de modelo:
Número de serie:

ADVERTENCIA:

PARA REDUCIR EL RIESGO DE QUE SE PRODUZCA UN INCENDIO O SE RECIBA UNA DESCARGA ELÉCTRICA, NO EXPONGA ESTE APARATO A LA LLUVIA NI A LA HUMEDAD. NO SE DEBERÁ EXPONER EL APARATO NI A GOTERAS NI A SALPICADURAS. Y NO DEBERÁ COLOCARSE NINGUN OBJETO QUE CONTenga LÍQUIDOS SOBRE EL APARATO, COMO POR EJEMPLO JARRONES.



CAUTION

RISK OF ELECTRIC SHOCK
DO NOT OPEN



AVISO:

PARA REDUCIR EL RIESGO DE SUFRIR UNA DESCARGA ELÉCTRICA NO quite LA CUBIERTA (O EL PANEL POSTERIOR). EN EL INTERIOR DEL APARATO NO HAY PIEZAS QUE DEBA MANIPULAR EL USUARIO. SOLICITE EL SERVICIO DE REPARACIONES AL PERSONAL DE SERVICIO CUALIFICADO.

Las notas importantes y la calificación se encuentran ubicadas en la parte posterior o inferior del gabinete.



El símbolo del rayo con punta de flecha, en el interior de un triángulo equilátero, tiene la finalidad de avisar al usuario de la presencia de "tensión peligrosa" dentro de la caja del aparato que podría ser de suficiente intensidad como para constituir un riesgo para las personas en caso de que éstas recibiesen una descarga eléctrica.



El signo de exclamación dentro de un triángulo equilátero tiene la finalidad de avisar al usuario de la presencia de instrucciones de utilización y mantenimiento (servicio) en el material impreso que acompaña al aparato.

Símbolo de CLASE II (doble aislamiento)

IMPORTANTES INSTRUCCIONES DE SEGURIDAD

1. Lea estas instrucciones.
2. Conserve estas instrucciones.
3. Preste atención a las advertencias.
4. Siga todas las instrucciones.
5. No utilice este aparato cerca del agua.
6. Limpie el aparato sólo con un paño seco.
7. No obstruya ninguna de las ranuras de ventilación. Realice la instalación según las instrucciones del fabricante.
8. No instale el equipo cerca de elementos para calefaccionar tales como radiadores, rejillas de calefacción, estufas eléctricas u otros aparatos (incluidos amplificadores).
9. No desarme el dispositivo de seguridad del enchufe polarizado o la conexión a tierra. Un enchufe polarizado contiene dos clavijas, una más ancha que otra. Un enchufe con conexión a tierra contiene dos clavijas y una tercera clavija con conexión a tierra. La clavija ancha del enchufe polarizado o la clavija de conexión a tierra representan dispositivos de seguridad. Si el enchufe del aparato no entra en el tomacorriente, consulte con un electricista para reemplazar sus antiguos tomacorrientes.
10. Asegúrese de proteger el cable de alimentación de las pisadas o torsiones especialmente en la zona de la clavija, en el receptáculo y en el punto donde el cable sale del aparato.
11. Utilice únicamente los accesorios que especifica el fabricante.
12. Utilice únicamente el carro, atril, trípode, soporte o la mesa que especifica el fabricante o que se vendió junto con el aparato. Cuando utilice un carro, sea cuidadoso al trasladar el conjunto carro/aparato para evitar daños por caídas de objetos.
13. Desenchufe este aparato si hay tormentas eléctricas o durante largos períodos de inactividad.
14. Confíe el servicio técnico sólo a personal calificado. El servicio técnico es necesario cuando el aparato sufre algún tipo de daño, por ejemplo cuando se dañan los cables de suministro eléctrico o la clavija, cuando se derrama líquido o se caen objetos sobre el aparato, cuando se lo expone a la lluvia o a humedad, cuando no funciona adecuadamente o cuando se cae.



No coloque la unidad sobre un mueble que pueda volcar si algún niño o adulto lo inclina, empuja, se coloca encima o trepa por él. La caída de la unidad puede provocar lesiones graves e incluso la muerte.

El aparato no debe colocarse en una instalación empotrada (por ejemplo: una biblioteca o un estante) a menos que cuente con la adecuada ventilación. Asegúrese de dejar un espacio de 3,9 pulgadas (10 cm), o más, alrededor del aparato.

Nunca use un despolvador a gas en esta unidad.
El gas del interior de la unidad puede inflamarse y explotar.