

R3F

dropcam Quick Start Guide

- 1 Connect Dropcam to your computer's USB port.**
Dropcam's status light will blink yellow.



- 2 Find the launch icon () and click to begin.**

Windows:

Select "Open folder to view files" from the AutoPlay window, or, if AutoPlay doesn't open go to "My Computer" to find the launch icon

Mac:

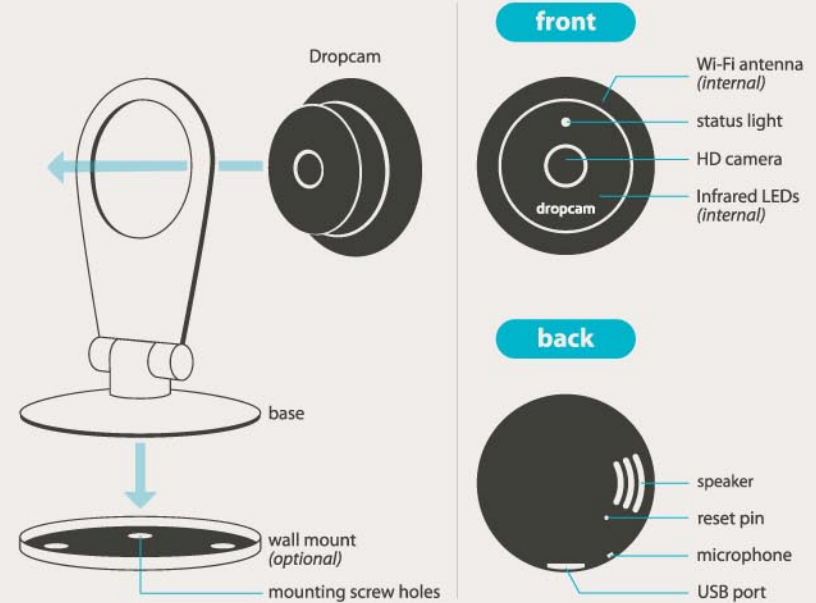
Select the launch icon on your desktop, or, open Finder from your Dock and select "Dropcam" from the sidebar



- 3 Follow the instructions that display to complete the setup.**
IMPORTANT: Please do not unplug Dropcam from your computer until prompted.

For additional help, go to:
www.dropcam.com/help/setup

Anatomy of dropcam HD



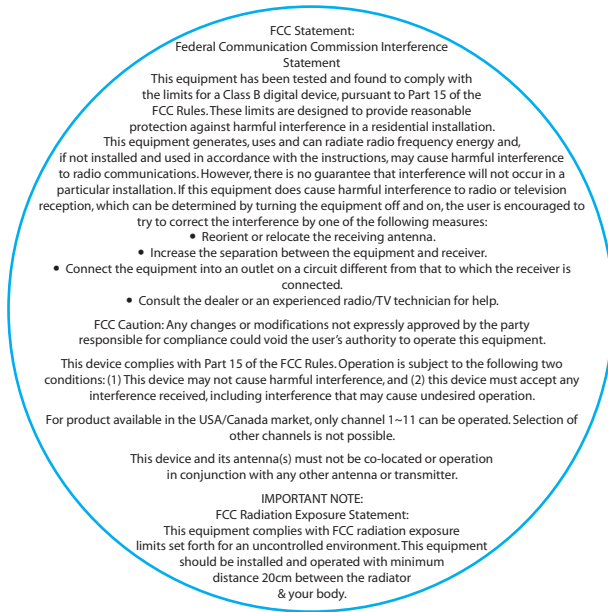
! Make sure you fasten Dropcam securely. Dropcam may be hot to the touch during operation. Keep Dropcam out of reach of children. Please place cord out of reach of children.

This device complies with part 15 of the FCC Rules. Operation is subject to the following two conditions:
(1) this device may not cause harmful interference, and
(2) this device must accept any interference received, including interference that may cause undesired operation.

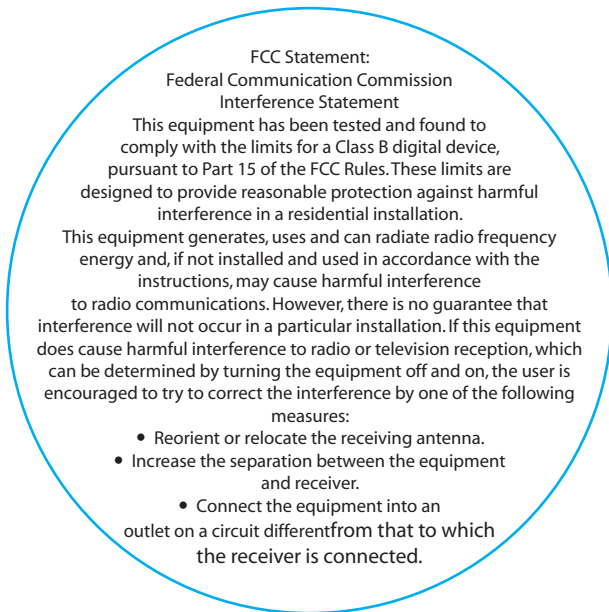
QSG-01/8

For help and support:
1-877-345-3767 | support@dropcam.com | www.dropcam.com/support

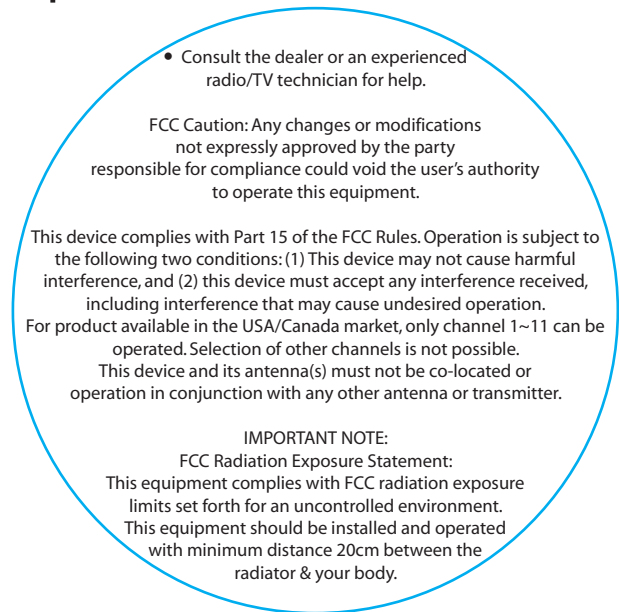
Circle = 80x 80mm
Text = 4.95pt



Circle = 80x 80mm
Text = 7pt



(Front)



(Back)