



Federal Communications Commission  
Authorization and Evaluation Division  
1435 Oakland Mills Road  
Columbia, MD 21046

Date: July 27, 2018

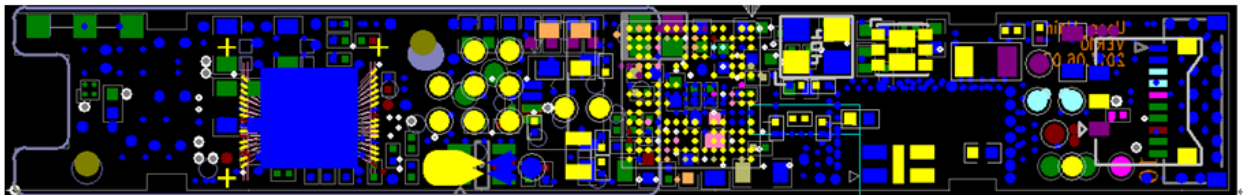
SUBJECT: FCC Application for (FCC ID : ADM-AP-701)

To Whom it may concern:

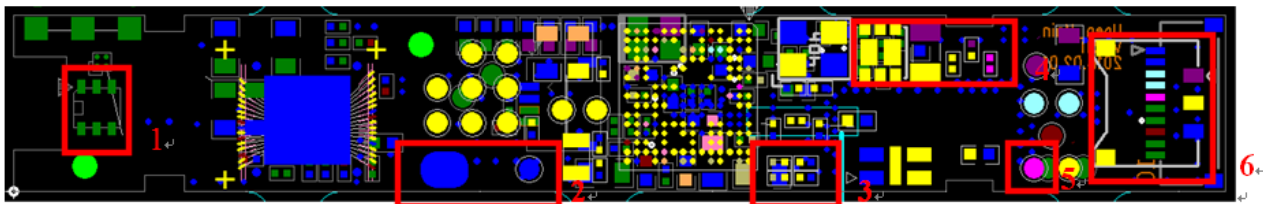
This is to request a Class II allow to a FCC ID : “ADM-AP-701” model, the device is identical to the previously certified except for the changes as below for details;

1. This model is changed.

Before



After



1. Add (TR1), Remove(R16)
2. Remove (C16, C17, C18, C20, R2, R3, U2)
3. Add “R10, R11, R6, R12”
4. Change direction ( 90° to the right)
5. Moved to “TP18”
6. Change direction ( 180°)



2) The change model doesn't change for the RF module. But, the change model was again tested for radiation emission.

This is because the radiation emission of the change model is worse than the base model.

[Test Comparison DATA]

-1 GHz to 25 GHz

Test Mode	Before	After
Low (Spurious)	41.02 dBuV/m(Result : Peak)	44.14 dBuV/m(Result : Peak)
High (Spurious)	40.83 dBuV/m(Result : Peak)	49.27 dBuV/m(Result : Peak)

This authorization is valid until further written notice from the applicant.

Please contact me if you have any questions or need future information regarding this application.

Regards,

---

In, Chulmin / Senior Engineer

Anoto Korea Corp.