

HARDWARE

Connectivity	Dual-mode Bluetooth® (BLE & Classic)
Memory	128MB (approx. 1,200 A4 pages of normal writing)
Battery	Rechargeable Lithium Polymer (non-removable)
Writing time	Up to 10 hours of continuous writing
Standby time	with pencap : approximately 30days / with pencap : approximately 10 days
Charging	USB TYPE-C connection - 2hours to full charge
Processor	ARM Cortex-M4 processor
Size	Length 150 mm (5.90 in.) & width 11.8 mm (0.46 in.)
Weight	25 grams (0.80 oz.)
Ink Cartridge	Standard D1 style ink cartridge

FCC Information to User

This equipment has been tested and found to comply with the limits for a Class B digital device, pursuant to Part 15 of the FCC Rules. These limits are designed to provide reasonable protection against harmful interference in a residential installation. This equipment generates, uses and can radiate radio frequency energy and, if not installed and used in accordance with the instructions, may cause harmful interference to radio communications. However, there is no guarantee that interference will not occur in a particular installation. If this equipment does cause harmful interference to radio or television reception, which can be determined by turning the equipment off and on, the user is encouraged to try to correct the interference by one of the following measures:

- Reorient or relocate the receiving antenna.
- Increase the separation between the equipment and receiver.
- Connect the equipment into an outlet on a circuit different from that to which the receiver is connected.
- Consult the dealer or an experienced radio/TV technician for help.

Caution

THE GRANTEE IS NOT RESPONSIBLE FOR ANY CHANGES OR MODIFICATIONS NOT EXPRESSLY APPROVED BY THE PARTY RESPONSIBLE FOR COMPLIANCE. SUCH MODIFICATIONS COULD VOID THE USER'S AUTHORITY TO OPERATE THE EQUIPMENT.

IMPORTANT NOTE : FCC RF Radiation Exposure Statement

This equipment complies with FCC RF radiation exposure limits set forth for an uncontrolled environment. This equipment should be installed and operated with a minimum distance of 0.5 centimeters between the radiator and your body. This transmitter must not be co-located or operating in conjunction with any other antenna or transmitter.

IC Information to User

This device complies with Industry Canada's license-exempt RSSs. Operation is subject to the following two conditions:

- (1) This device may not cause interference; and (2) This device must accept any interference, including interference that may cause undesired operation of the device

Le présent appareil est conforme aux CNR d'Industrie Canada applicables aux appareils radio exempts de licence. L'exploitation est autorisée aux deux conditions suivantes :

- (1) l'appareil ne doit pas produire de brouillage, et (2) l'utilisateur de l'appareil doit accepter tout brouillage radioélectrique subi, même si le brouillage est susceptible d'en compromettre le fonctionnement.

HVIN(Hardware Version Id Number): ANDANTE

PMN(Product Marketing Name): Digital Pen

IC: 23775-ANDANTE

For videos, tips and tricks, documentation and support
www.livescribe.com

©2019 Livescribe, Inc. All rights reserved. Livescribe is a trademark of Livescribe Inc., San Francisco, CA 94104. Third-party trademarks mentioned are the property of their respective owners.

4

Quick Start Guide



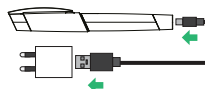
Writing digital is as easy as 1-2-3!

1. DOWNLOAD APP



Download the free Livescribe+ App from
Google Play | Amazon App Store | App Store

2. POWER ON & PAIR



Power ON the smartpen by plugging one end of the included micro-USB cable into the Aegir smartpen and the other end into a USB power source.



Power On (blinking blue)

Pen will power ON with a beep and the smartpen LED indicator will blink **blue**, indicating that the pen is ready to pair with your smartphone/tablet.



Complete Pairing

When the LED indicator is blinking **blue**, open the Livescribe+ app on your smartphone or tablet. Select *Connect to Smartpen* option in the Livescribe+ app to finish pairing. The smartpen will beep and the LED indicator will stay **blue** upon successful pairing.

3. START WRITING



That's it! Unplug the micro USB cable and start writing with your smartpen on any Livescribe dot pattern enabled smartpaper and see your notes appear real-time on the Livescribe+ app.

Notes:

- Additional pairing methods are detailed in page 2.
- Active Bluetooth® connection is not necessary to use your pen; refer page 2 for details.
- You need to pair your smartpen only once with each device that you use - once paired, your smartpen will automatically connect to that device when you open the Livescribe+ app and have the device within Bluetooth® connection range with the pen.

1

This device complies with part 15 of the FCC Rules. Operation is subject to the following two conditions: (1) This device may not cause harmful interference, and (2) this device must accept any interference received, including interference that may cause undesired operation.

Livescribe Smartpaper and Paper-controls

Livescribe smartpaper has a unique dot-pattern printed on every sheet. Along with Livescribe's smartpens, this proprietary pattern enables digital note-taking. This smartpaper is available in different sizes and formats. Livescribe smartpaper also comes with printed paper-controls that are activated by tapping on them with your smartpen to carry out a pre-set action. Some paper-controls that work with the Aegir smartpen are:



Getting the most from your Aegir smartpen



Write even when you are not around smartphone or tablet:

The Aegir smartpen does not require an active Bluetooth® connection with the Livescribe+ app to capture your notes. Anything you write is stored in the pen and copied to your app the next time you connect.



Recording voice while taking notes - Pencasts*:

Pencasts are digital versions of your notes that have audio recordings synced to them for interactive playback. With your smartpen connected via Bluetooth® to your device, tap on the record icon in Livescribe smartpaper to record audio using the microphone on your smartphone or tablet. For playback, simply tap on the written word and hear recorded audio from that particular instance in your device.



Search your handwriting:

Your handwriting is searchable, like everything else in your life. To search for a particular phrase from across all your notes, use search function in the Livescribe+ app.



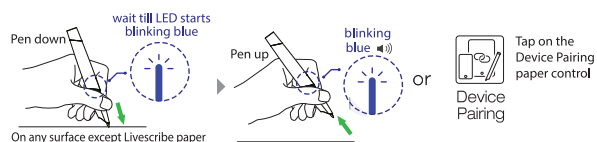
Make your notes accessible everywhere:

Send your notes through mail, text and more, in the format you need - PDF, PNG, TXT, docx, etc. Link your cloud services (Google Drive/ Dropbox/OneNote/Evernote) and enable auto-send in the Livescribe+ app to automatically push your notes to the cloud.

*This feature needs an active Bluetooth® connection between your smartpen and device.

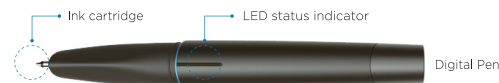
Pairing methods:

Bring your smartpen to pairing mode using one of two methods below:



Once in pairing mode, select *Connect to Smartpen* in the Livescribe+ app to finish pairing.

Know your Aegir smartpen



Ink cartridge

Replaceable D1 style ink cartridge. Visit www.livescribe.com for replacement details and more options.

LED status indicator

Connection

- Solid Blue**
Smartpen is connected via Bluetooth® to a smartphone / tablet device.
- Solid Green**
Pen is awake and can be used to capture notes, but is not currently connected to any Bluetooth® enabled device.
- Blinking Blue**
Pen is in pairing mode and is waiting for initial Bluetooth® connection. *The smartpen must be in this state to pair to a new device.*

Battery

- Solid Orange** : Low battery - needs charging
Smartpen battery life is at 20%.
At 5% battery level, the pen shuts down automatically with a beep and will not capture notes.
- : Charging
Smartpen battery is charging - *when connected to a USB power source*

Error alert

- Blinking Red** (x3)
Possible errors include improper writing angle, smartpen memory is full, unrecognized writing surface, etc.

Memory

- Blinking Red** : 90% Memory
Smartpen memory is at or above 90% of its capacity. This notification will repeat everytime the pen wakes up until memory is cleared. When smartpen memory is full, the pen will not capture any data and will trigger an error notification when you continue to write.
To clear memory, (i) connect smartpen to your device (ii) tap *clear memory* under smartpen settings.
Please ensure pen data is synced with your device before performing this step.