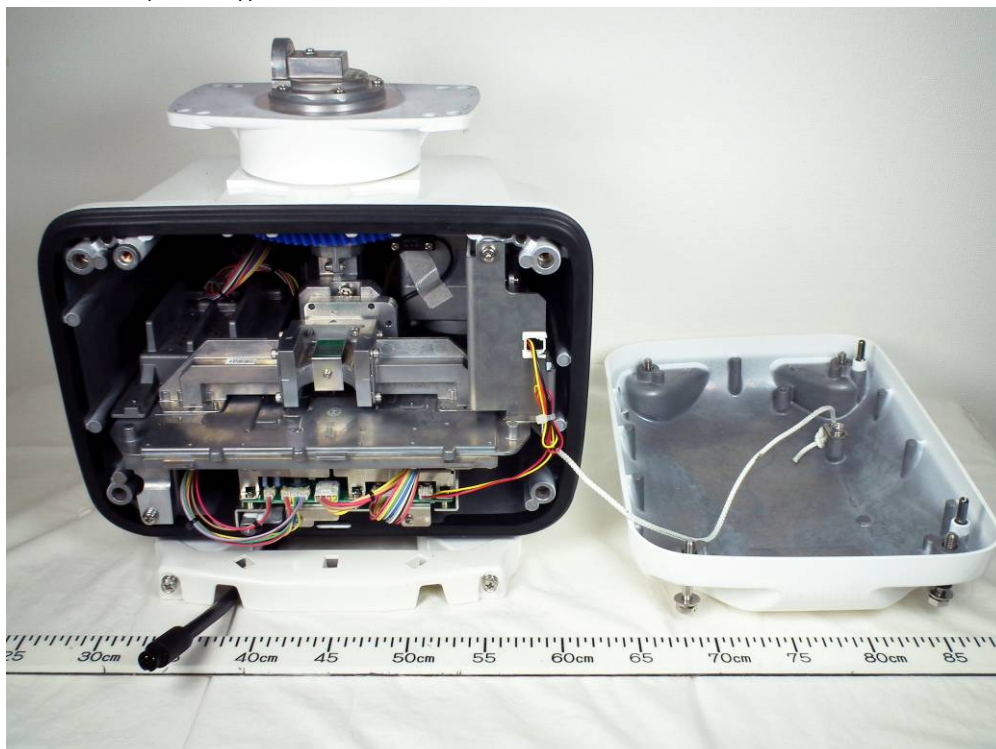


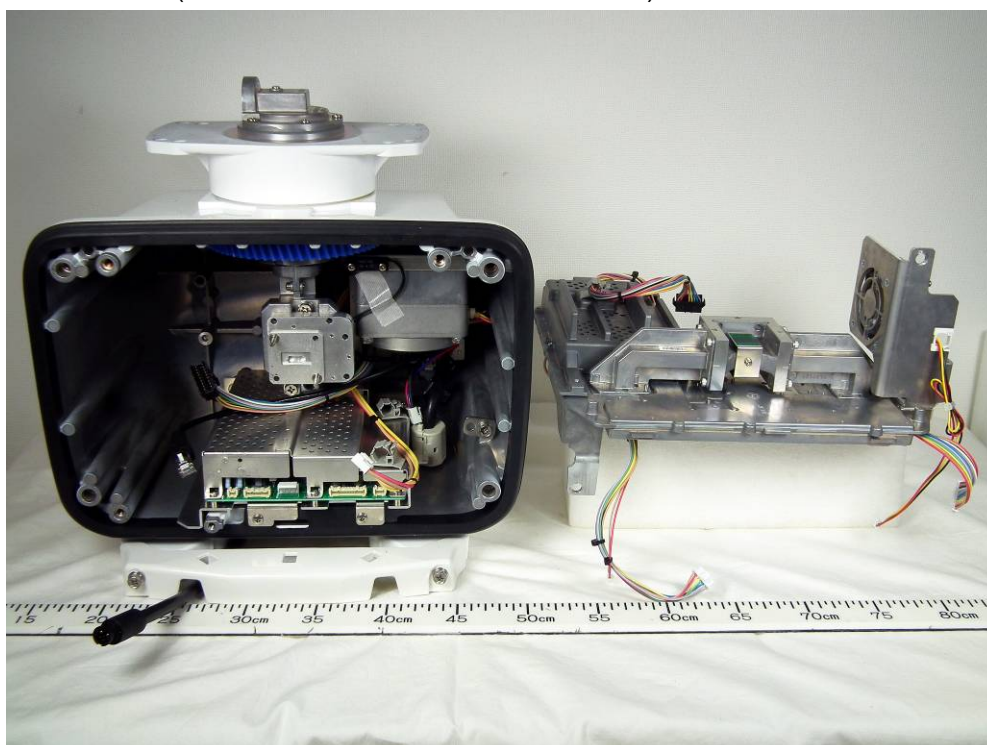
Photographs of Furuno Radar Sensor DRS6A-NXT

1 Internal View

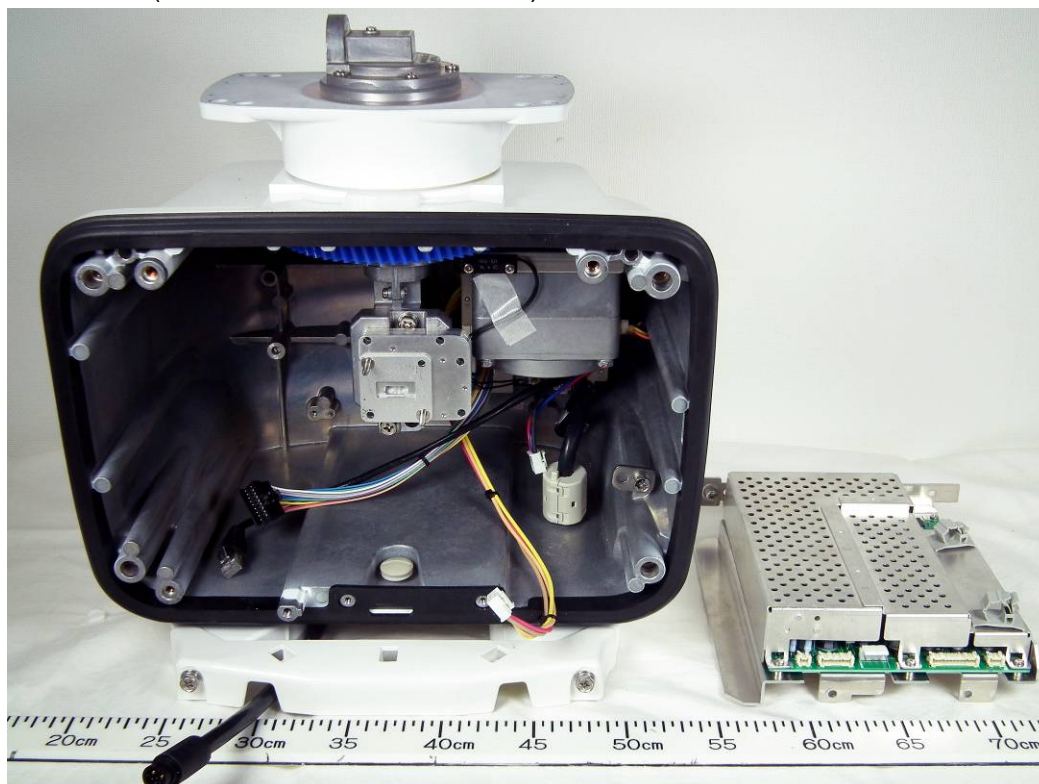
1.1 Inside View (with rear cover removed, showing Scanner Motor (upper) and Transceiver RTR-119 (middle))



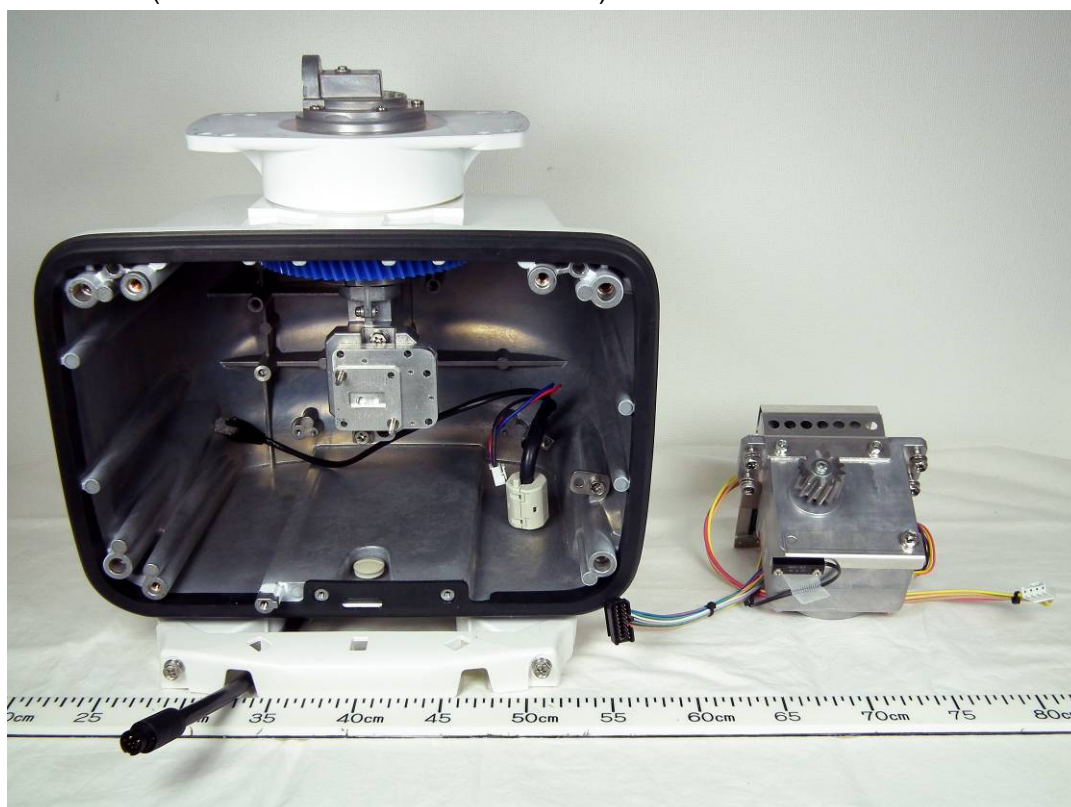
1.2 Inside View (with Transceiver RTR-119 removed)



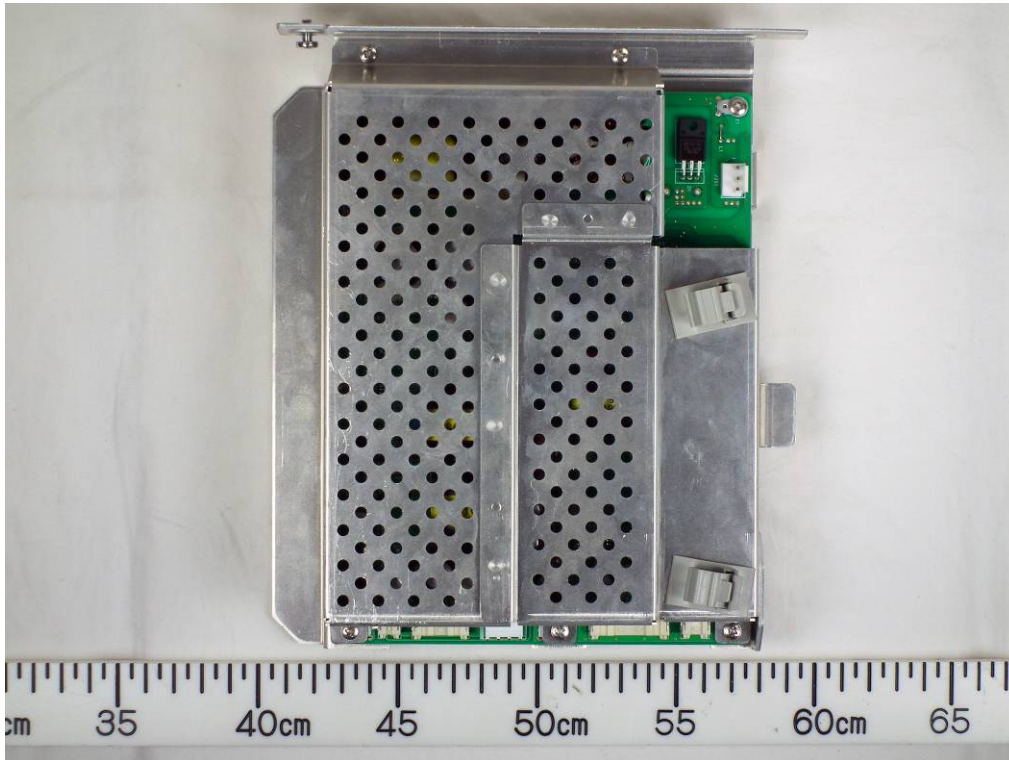
1.3 Inside View (with Power module removed)



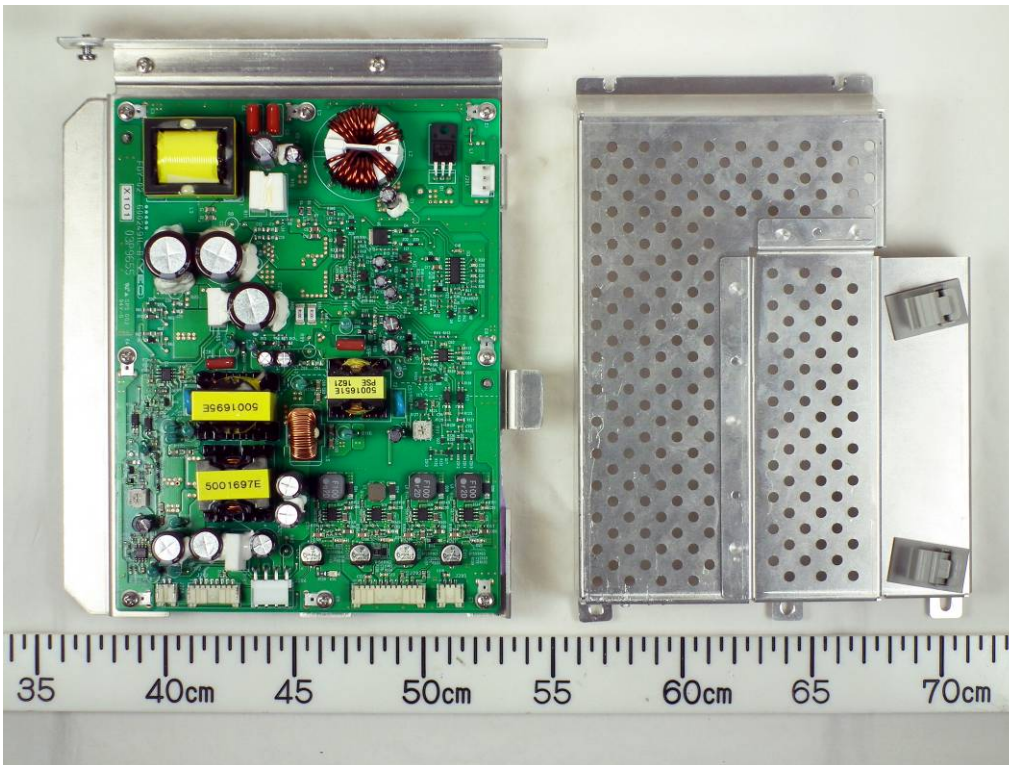
1.4 Inside View (with Motor Drive module removed)



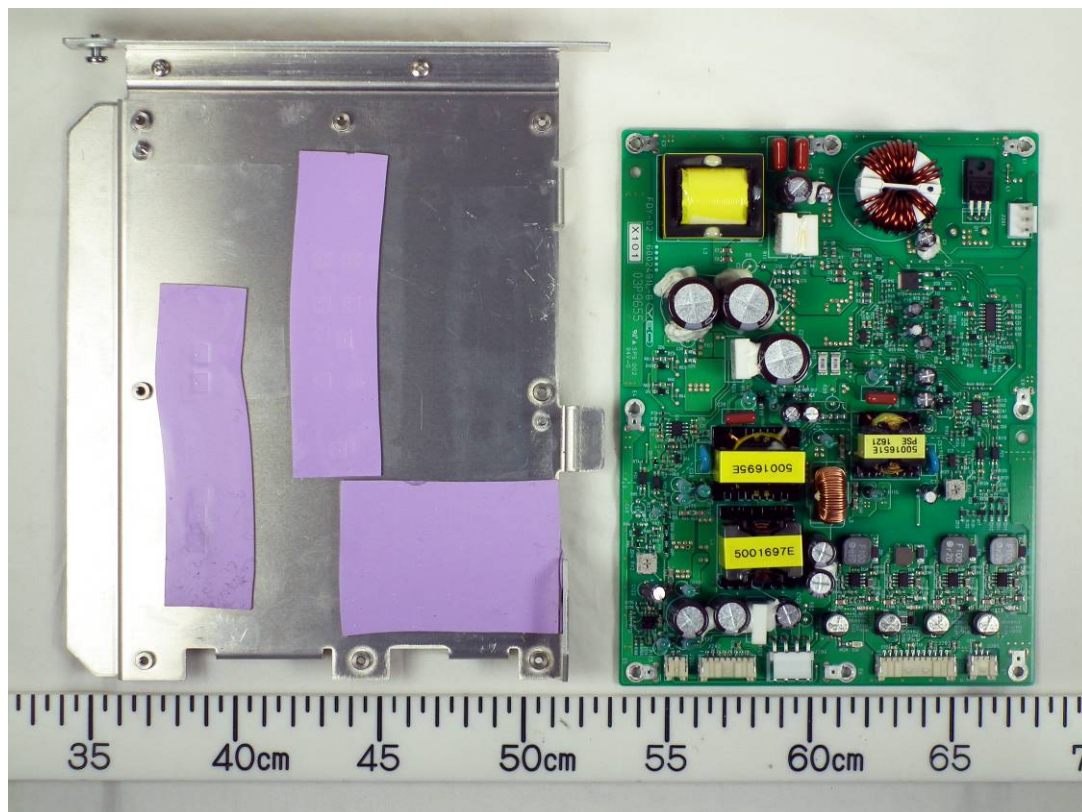
2 Power module
2.1 Top View



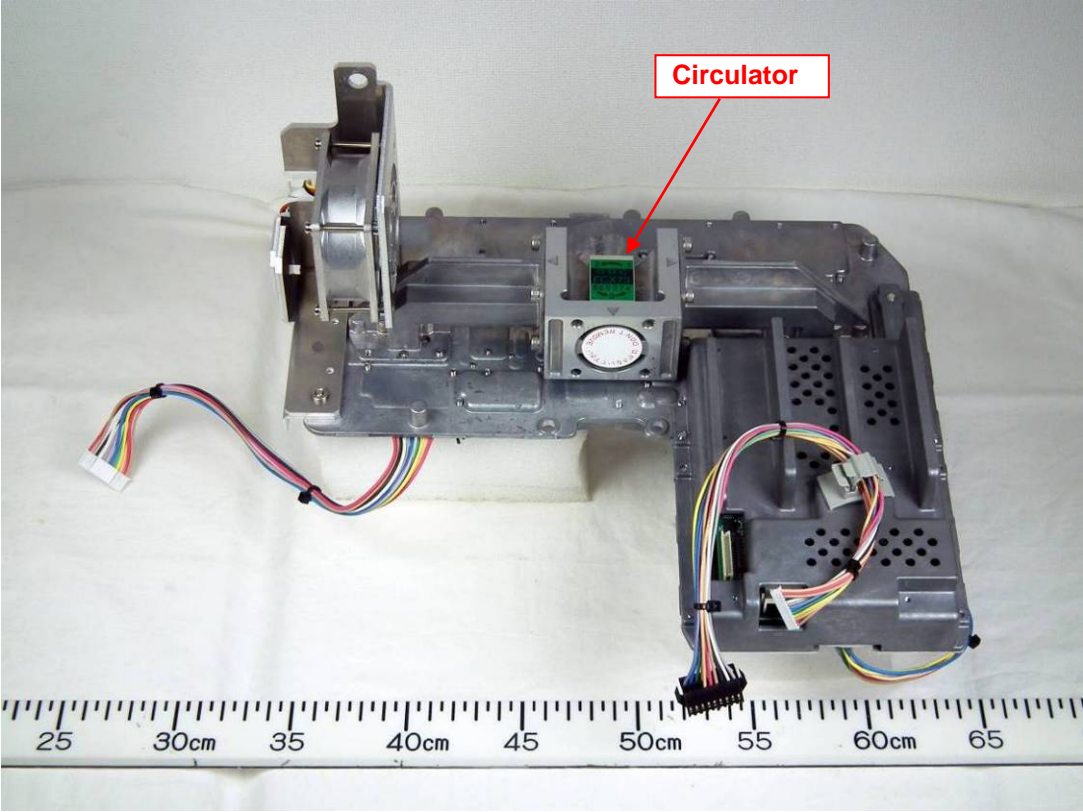
2.2 Top View (with Shield-cover removed, showing PWR Board 03P9655)



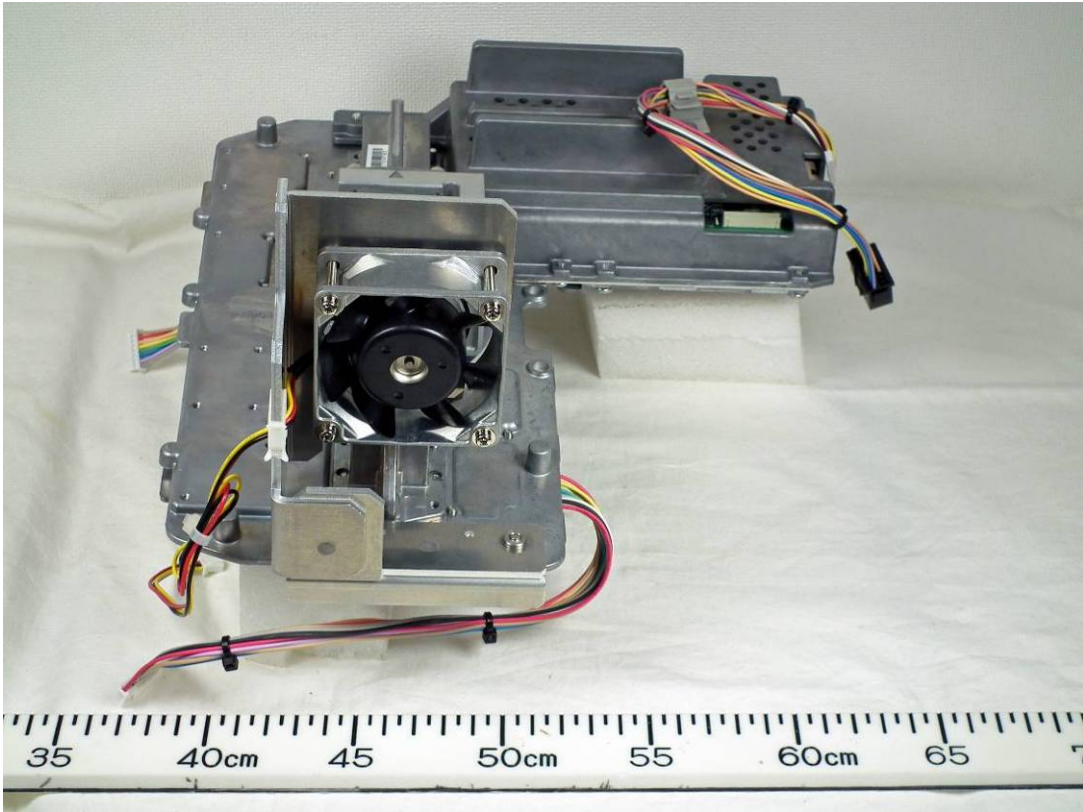
2.3 Top View (with PWR Board 03P9655 removed)



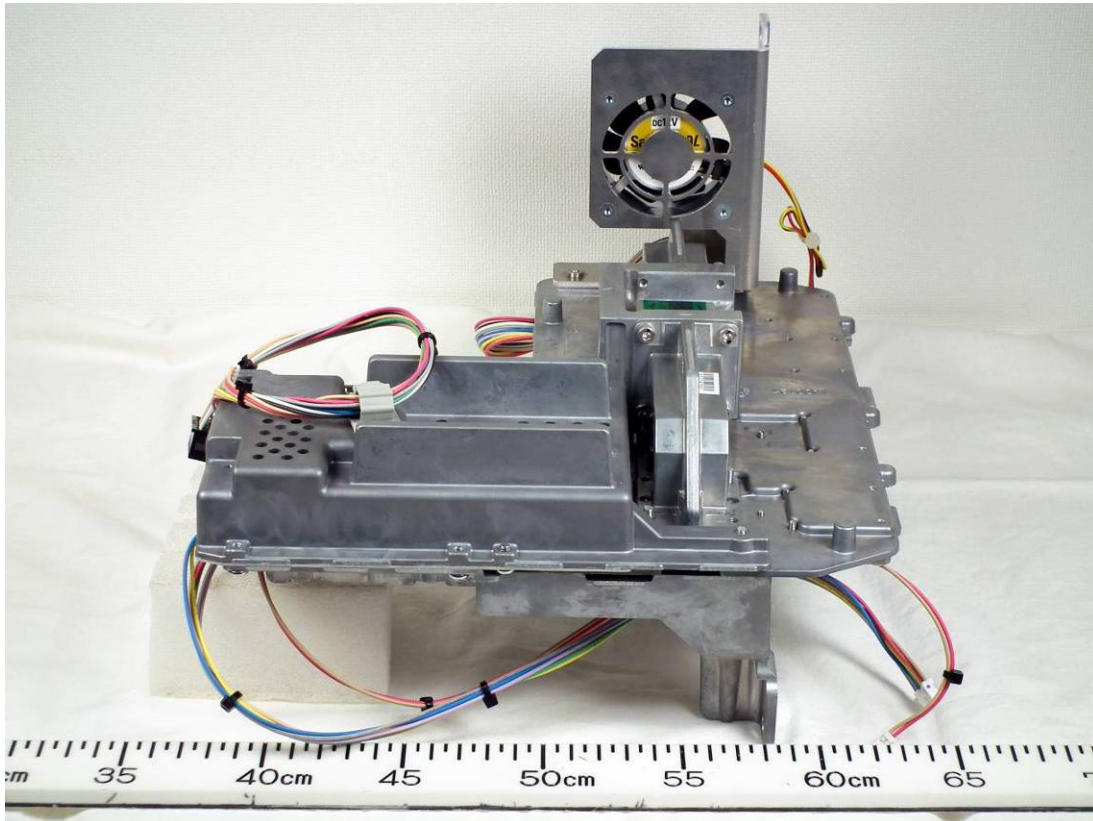
3 Transceiver
3.1 Top View



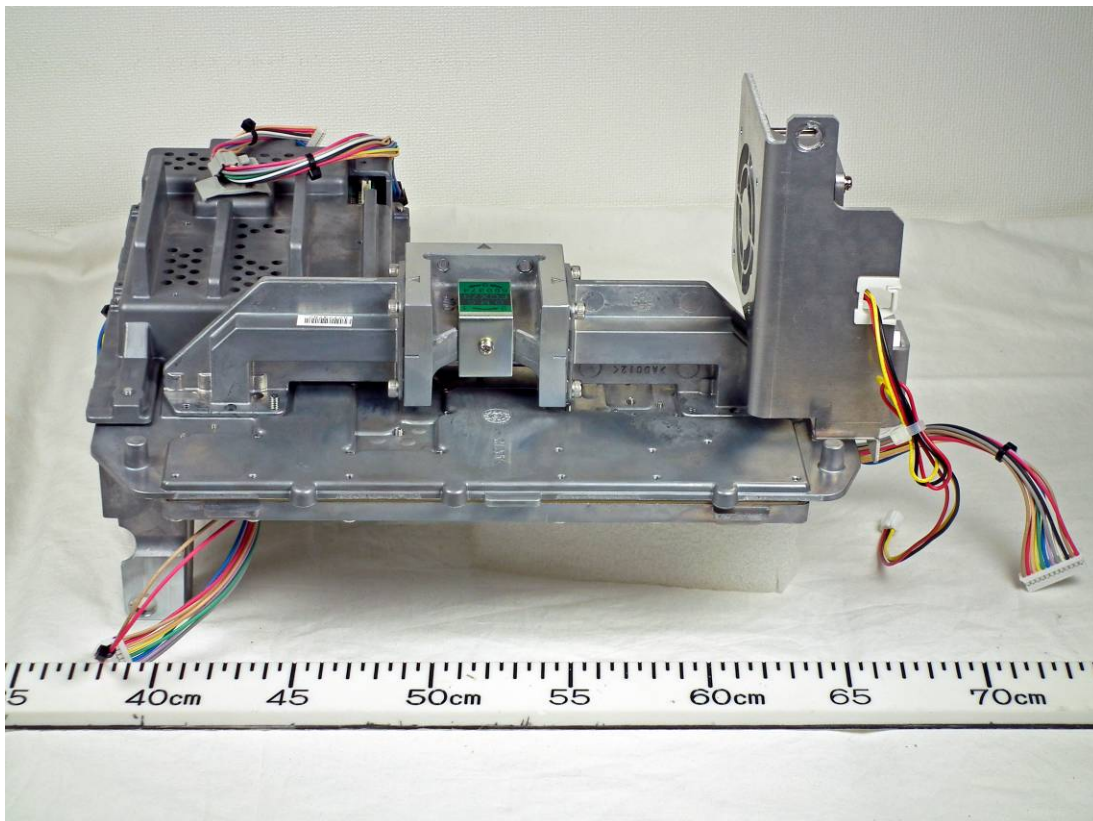
3.2 Top (left) View



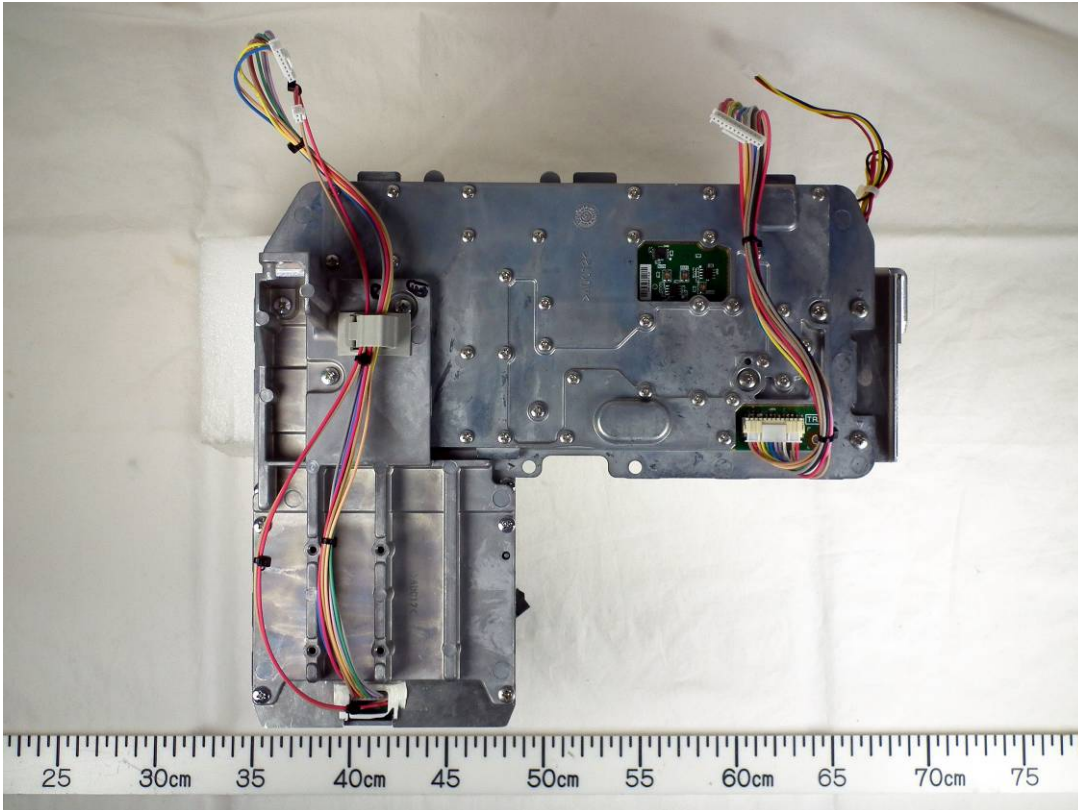
3.3 Right View



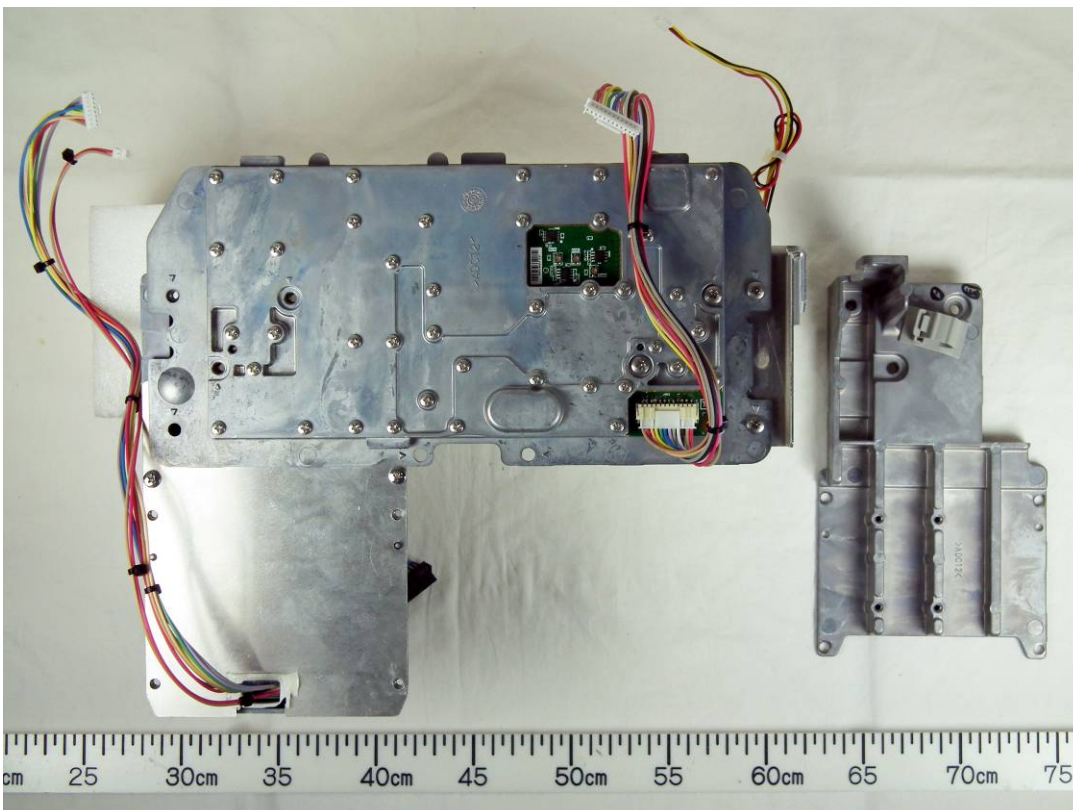
3.4 Rear View



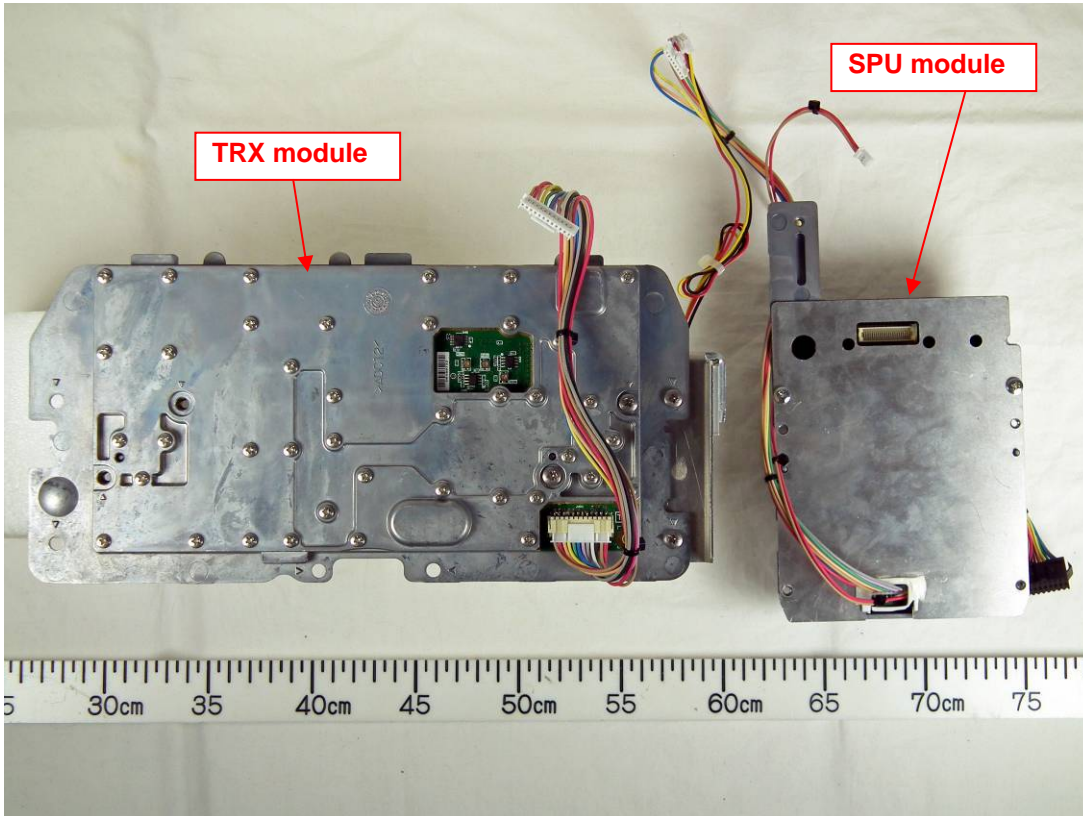
3.5 Bottom View



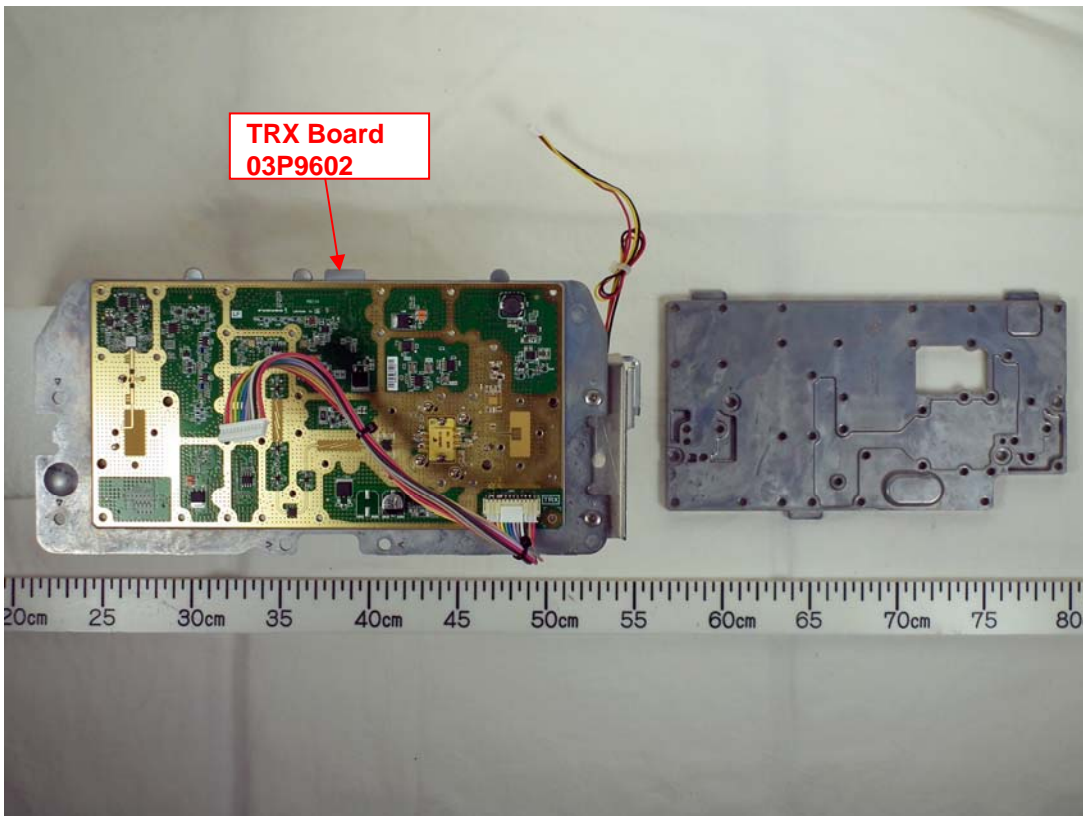
3.6 Bottom View (with Shield-cover removed)



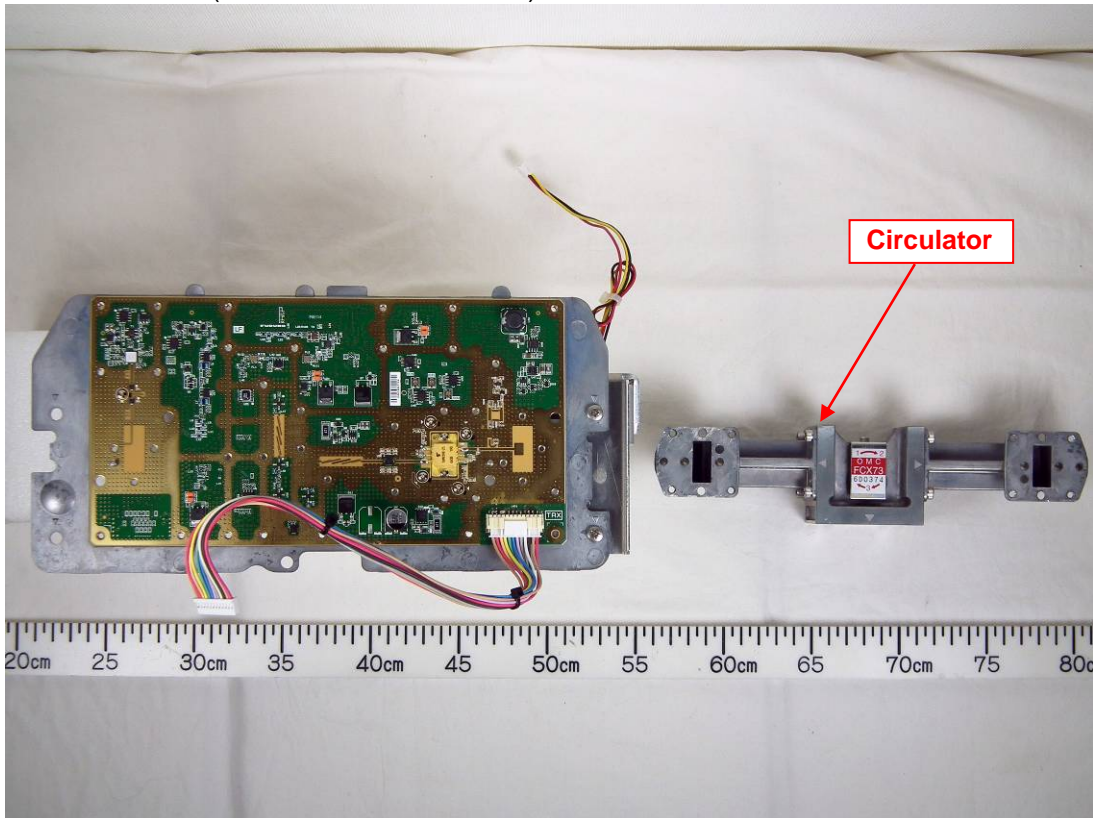
3.7 Bottom View (with SPU module removed)



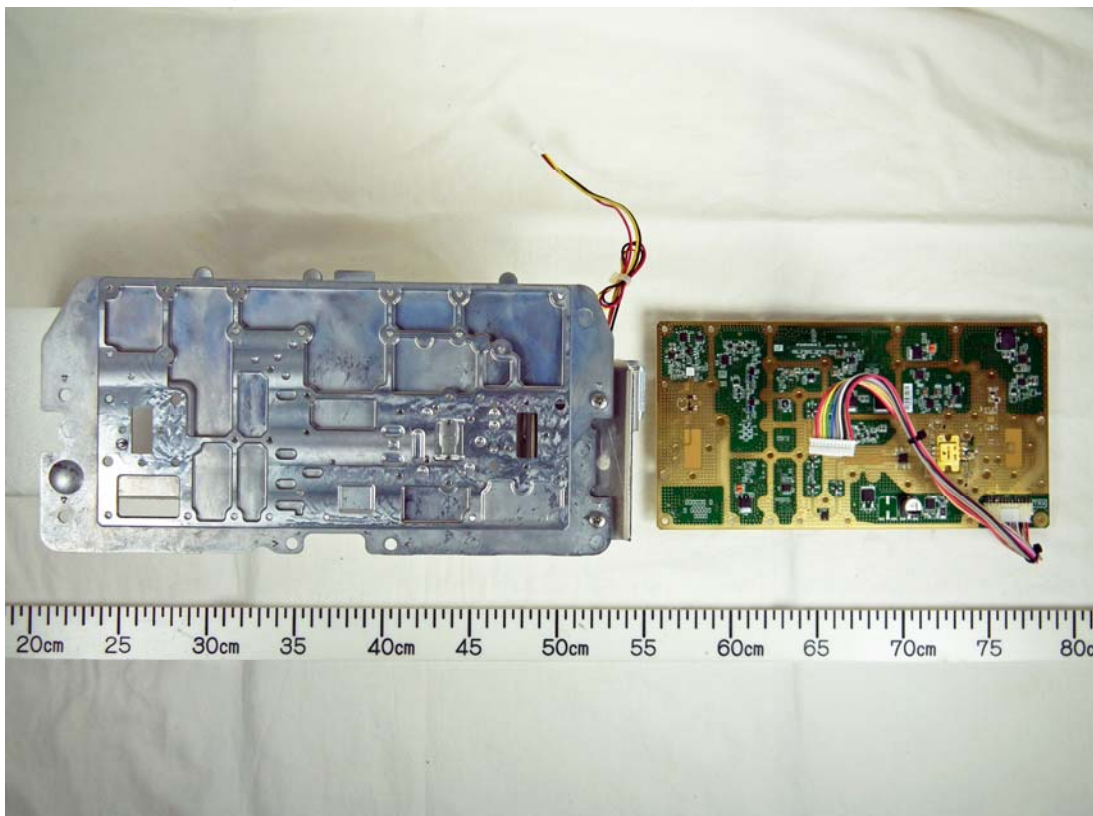
3.8 TRX module (with Shield-cover removed, showing TRX Board 03P9602)



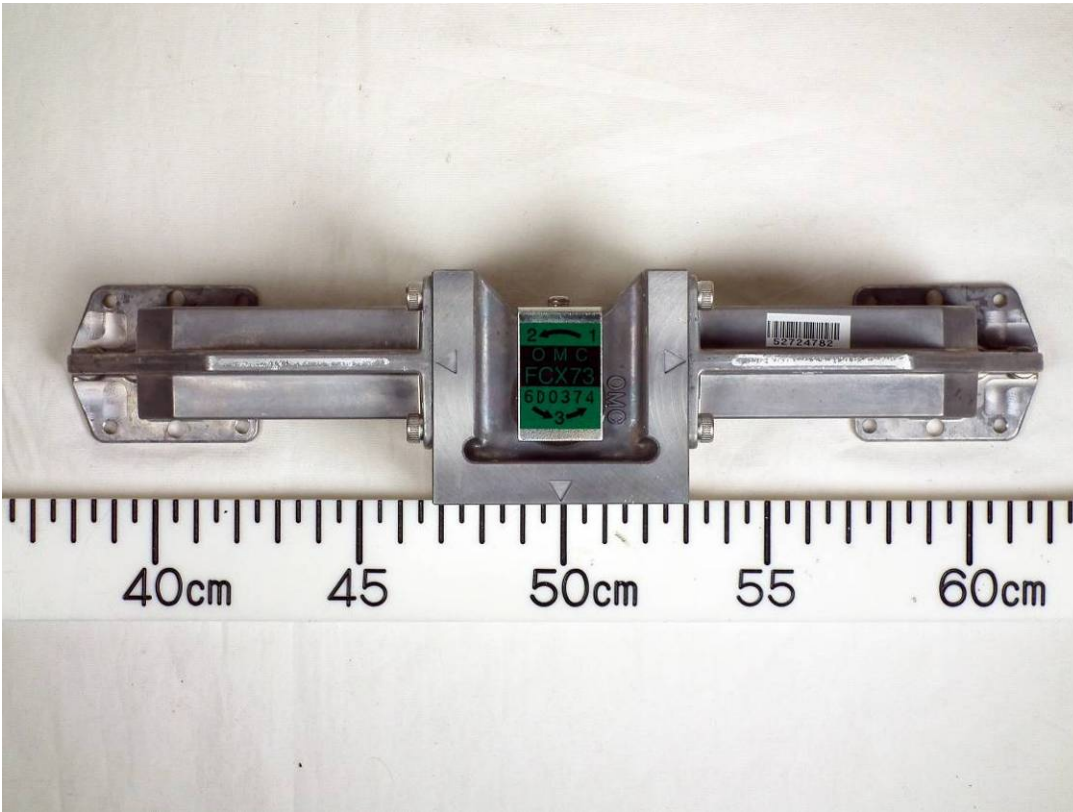
3.9 TRX module (with Circulator removed)



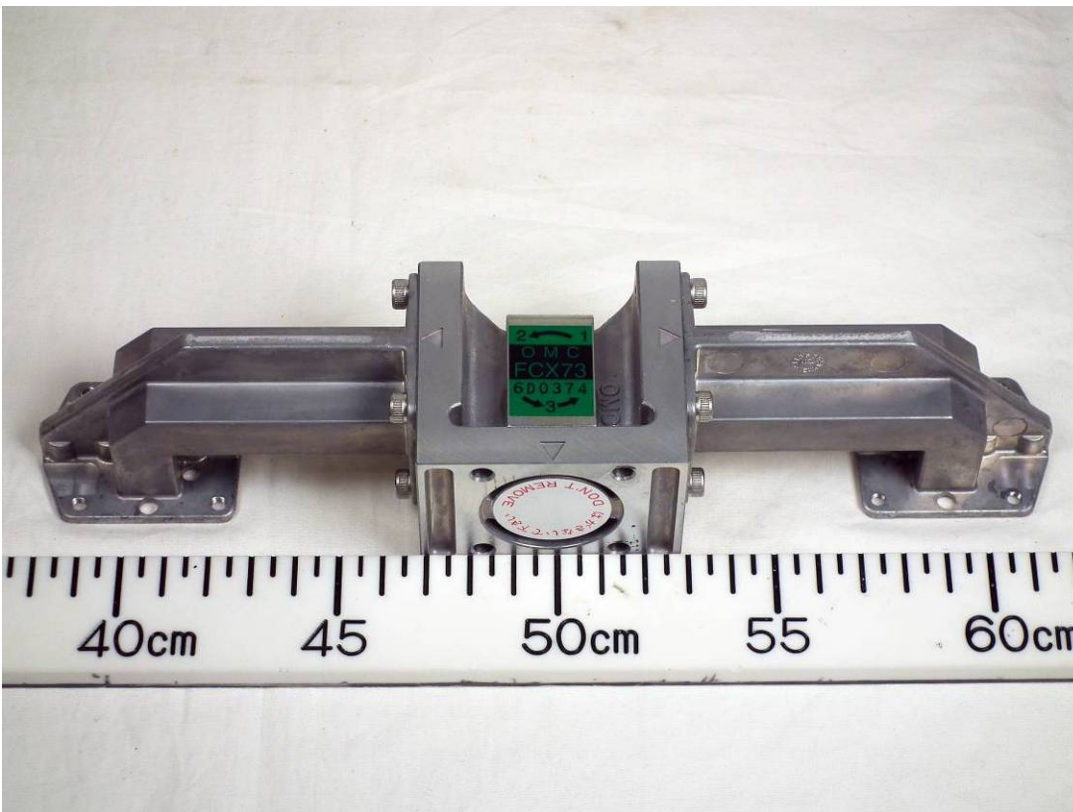
3.10 TRX module (with TRX Board 03P9602 removed)



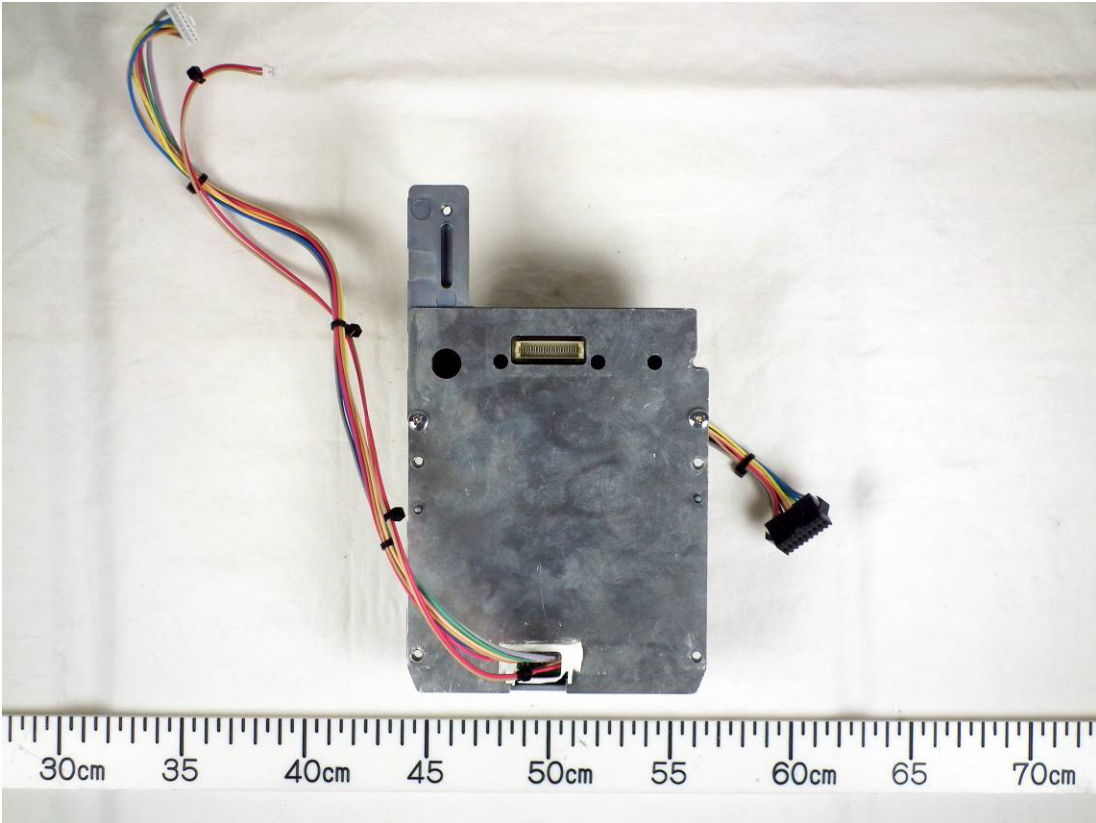
3.11 Circulator Top side



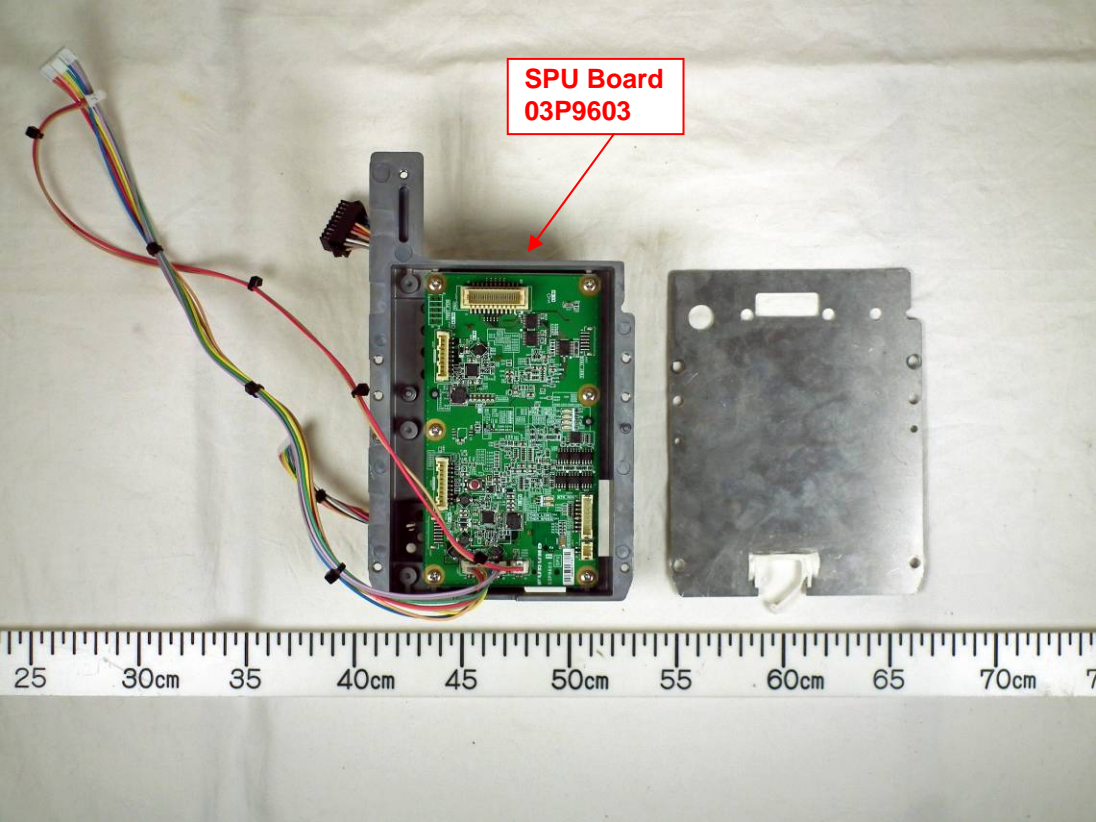
3.12 Circulator Front side



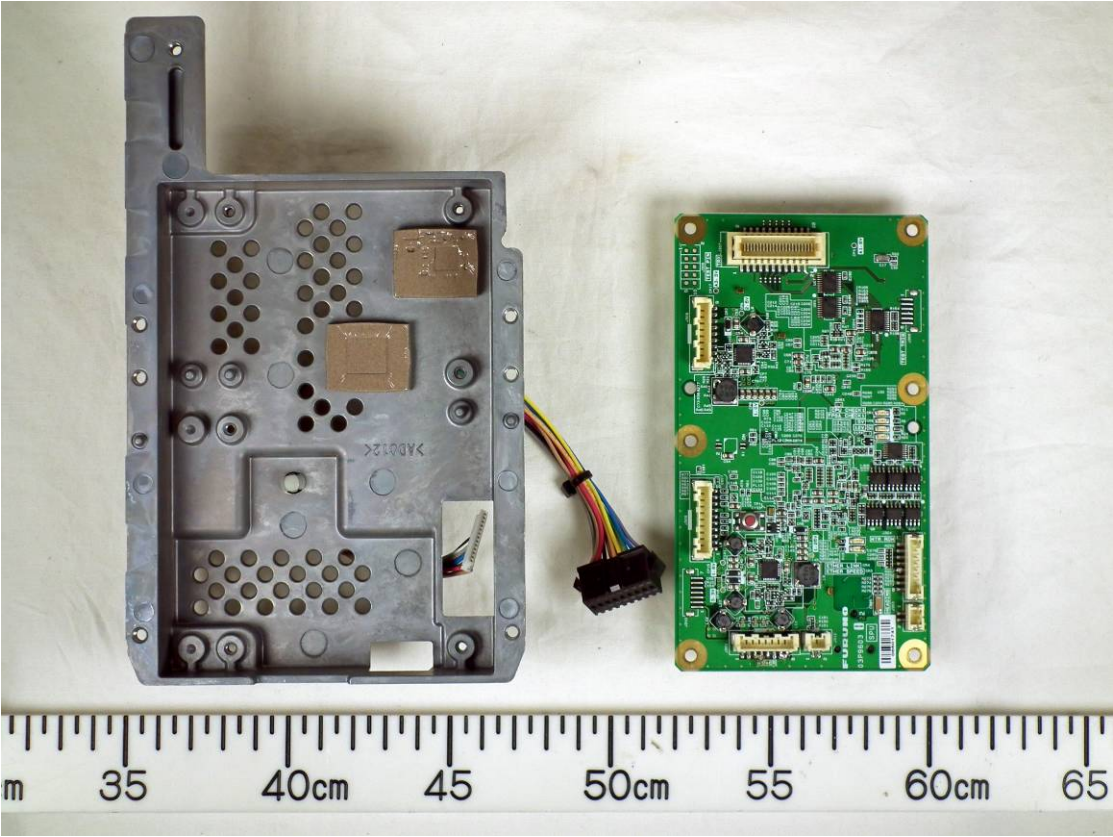
3.13 SPU module



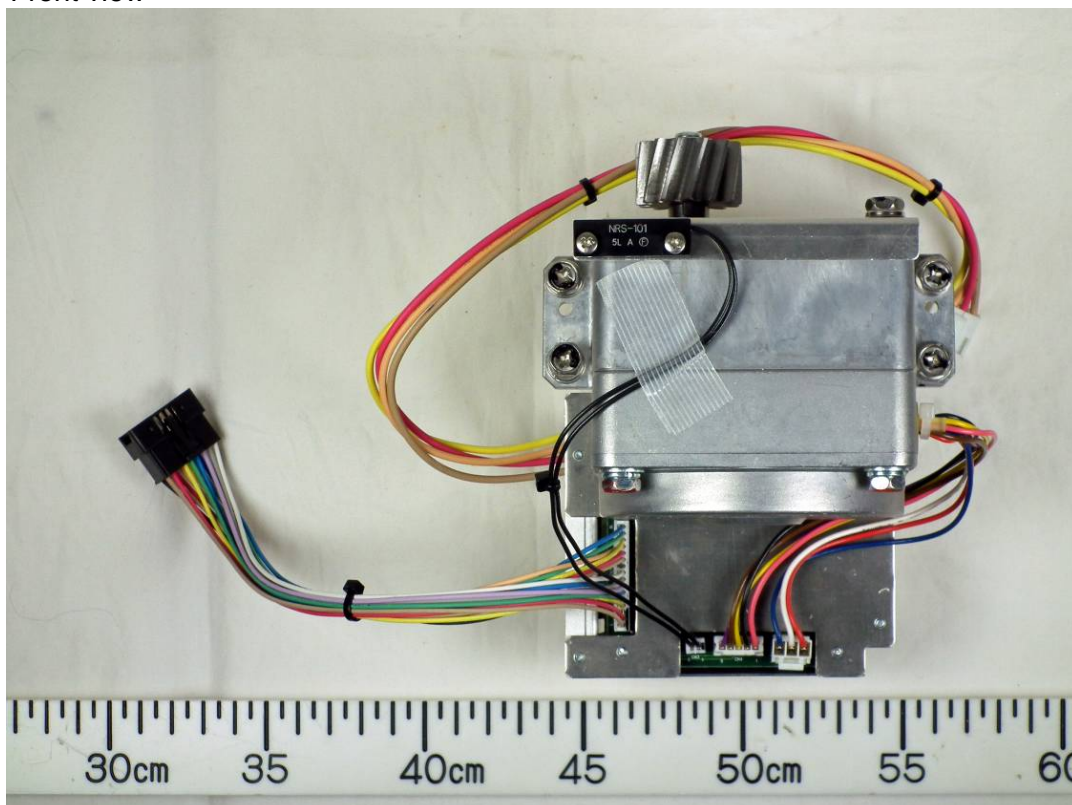
3.14 SPU module (showing SPU Board 03P9603)



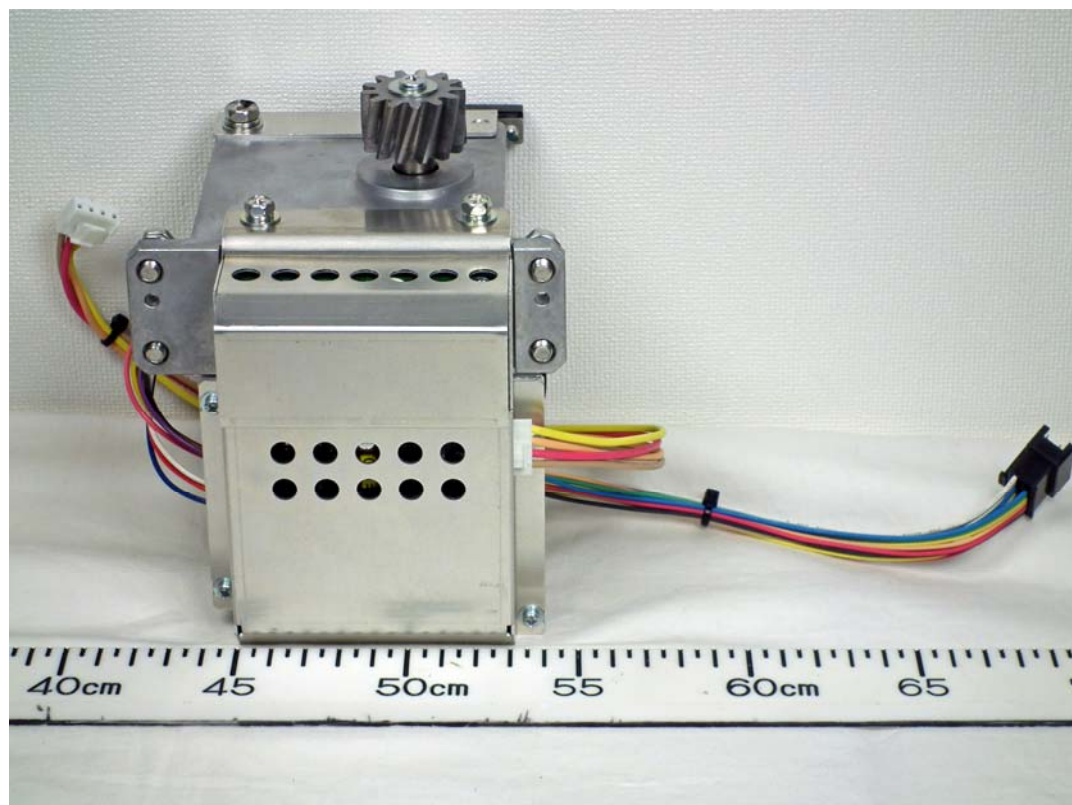
3.15 SPU module (with SPU Board removed)



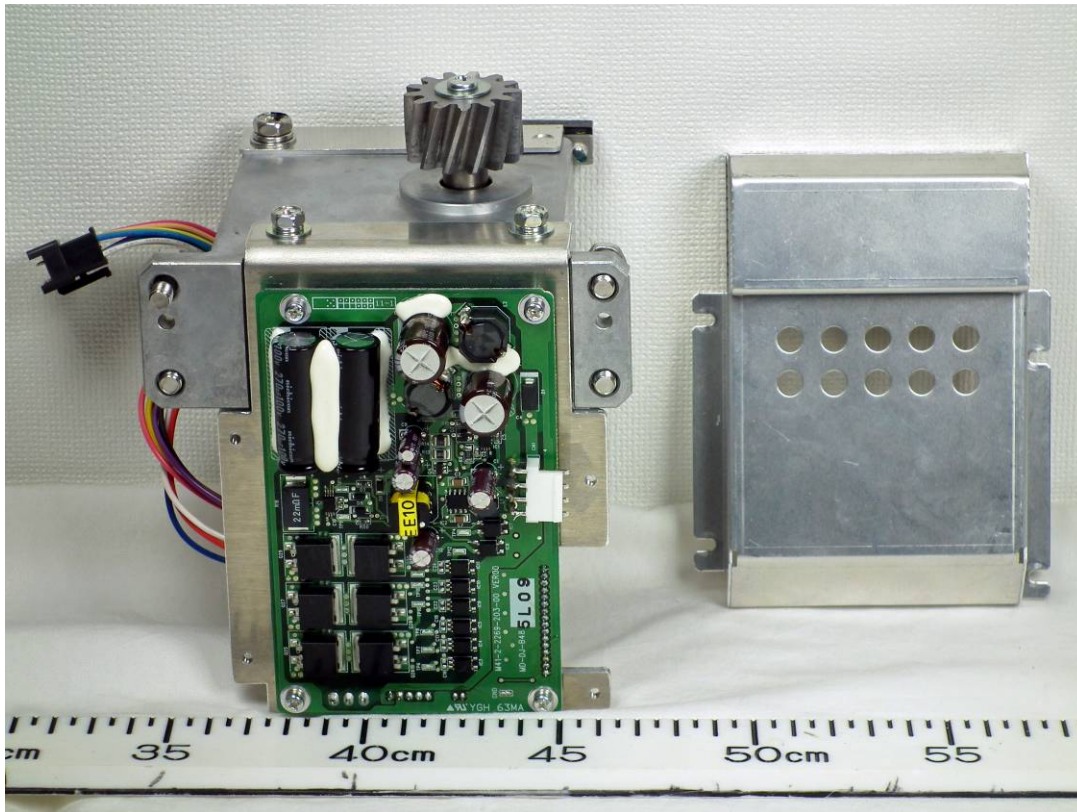
4 MTR-DRV module 4.1 Front view



4.2 Rear View



4.3 Rear View (with shield cover removed, showing MTR-DRV Board 14DJ003 (MD-DJ-B48))



4.4 Rear View (with MTR-DRV Board 14DJ003 (MD-DJ-B48) removed)

