

Photographs of Furuno Radar Sensor DRS12A X-Class

1 Internal View

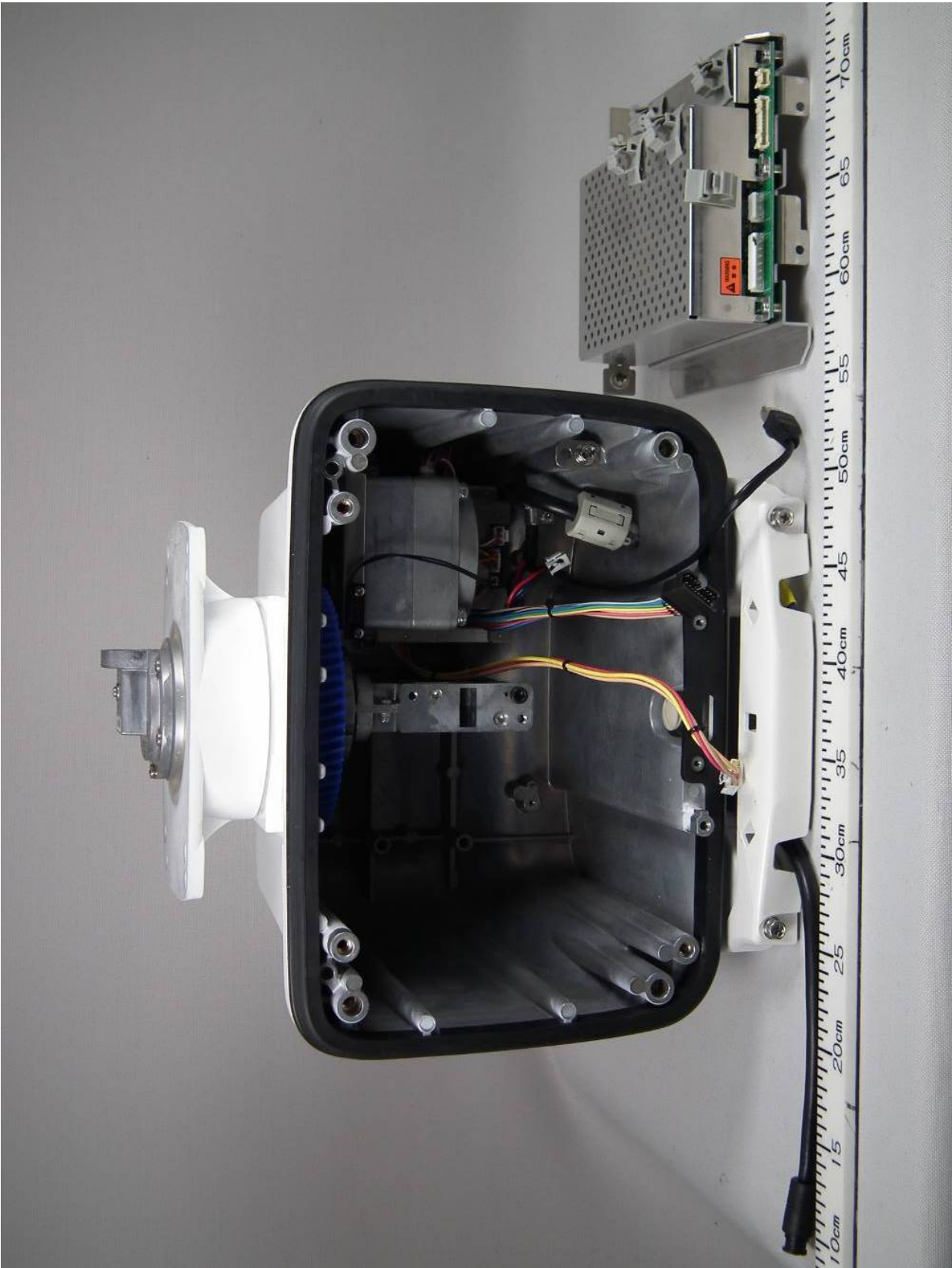
1.1 Inside View (with rear cover removed, showing Transceiver RTR-113)



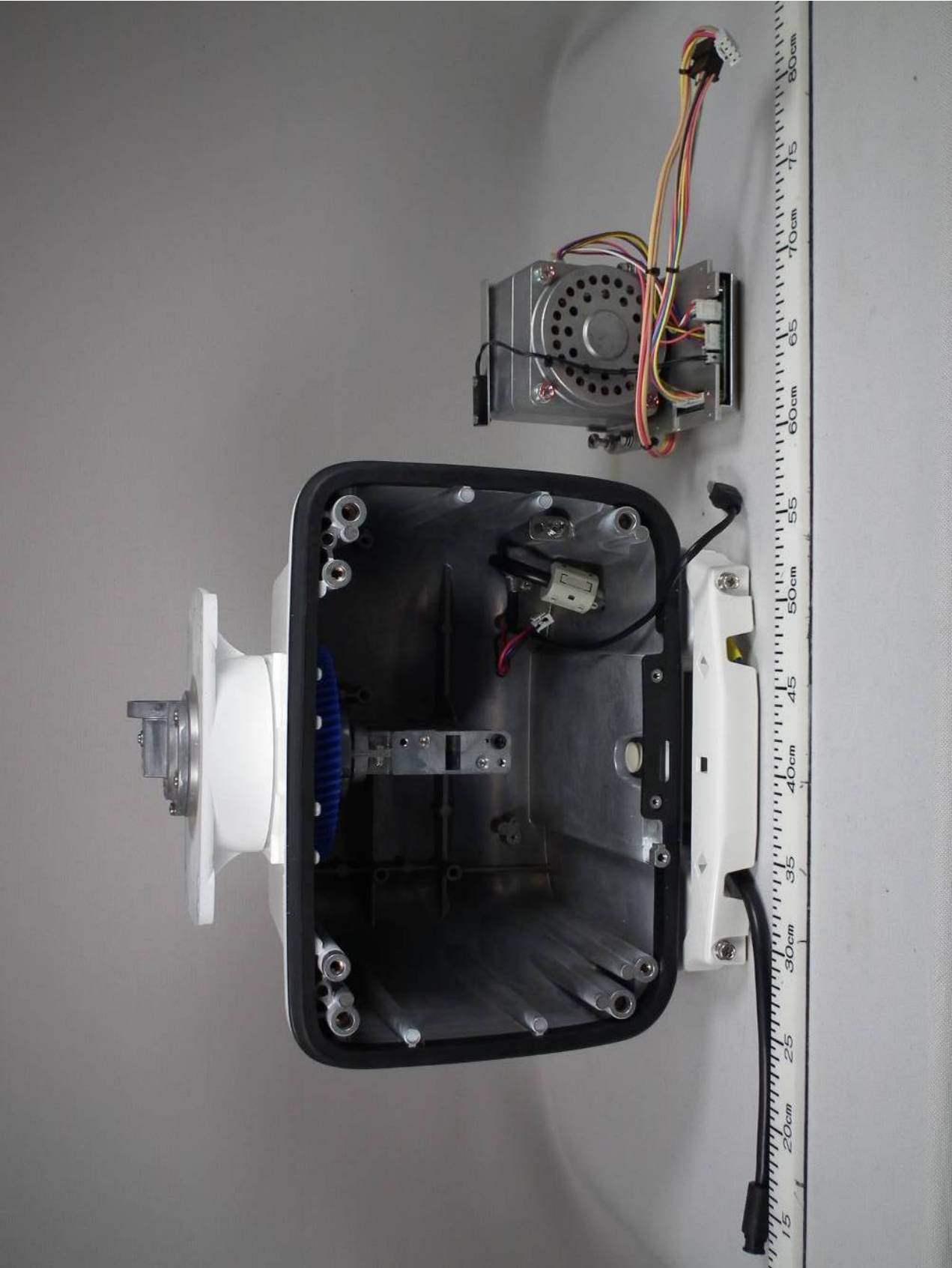
1.2 Inside View (with Transceiver RTR-113 removed)



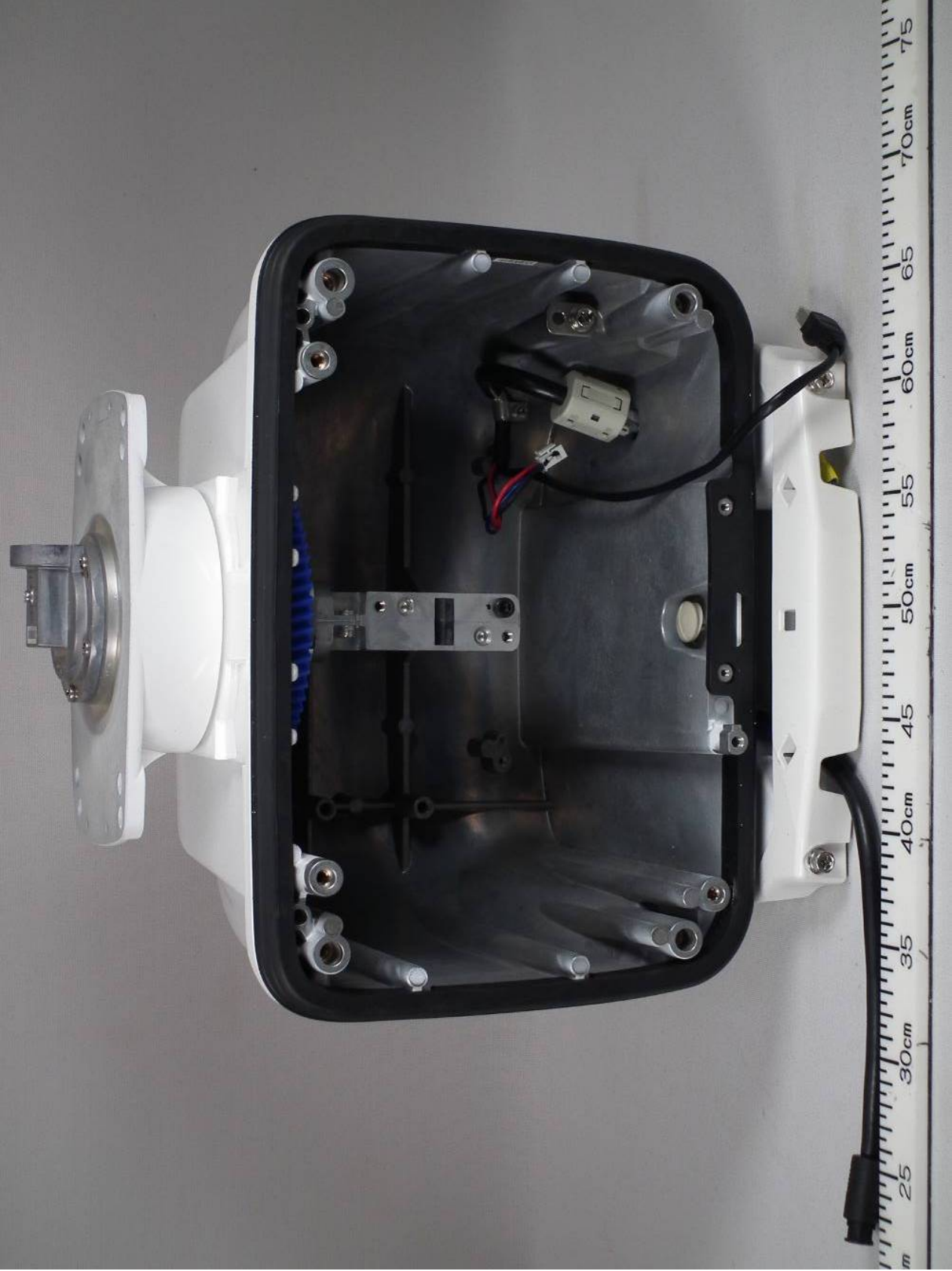
1.3 Inside View (with Power module removed)



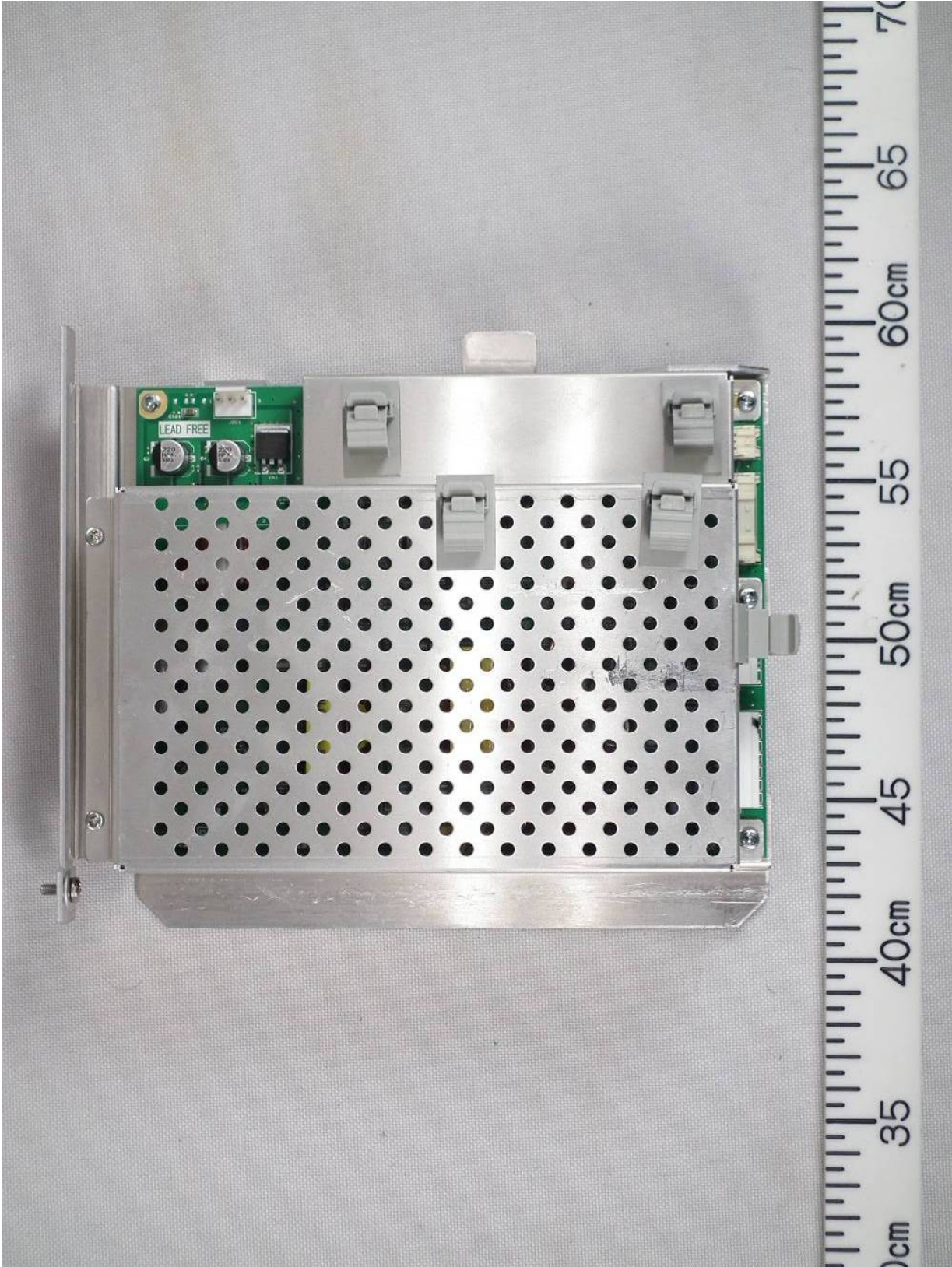
1.4 Inside View (with motor module removed)



1.5 Inside View



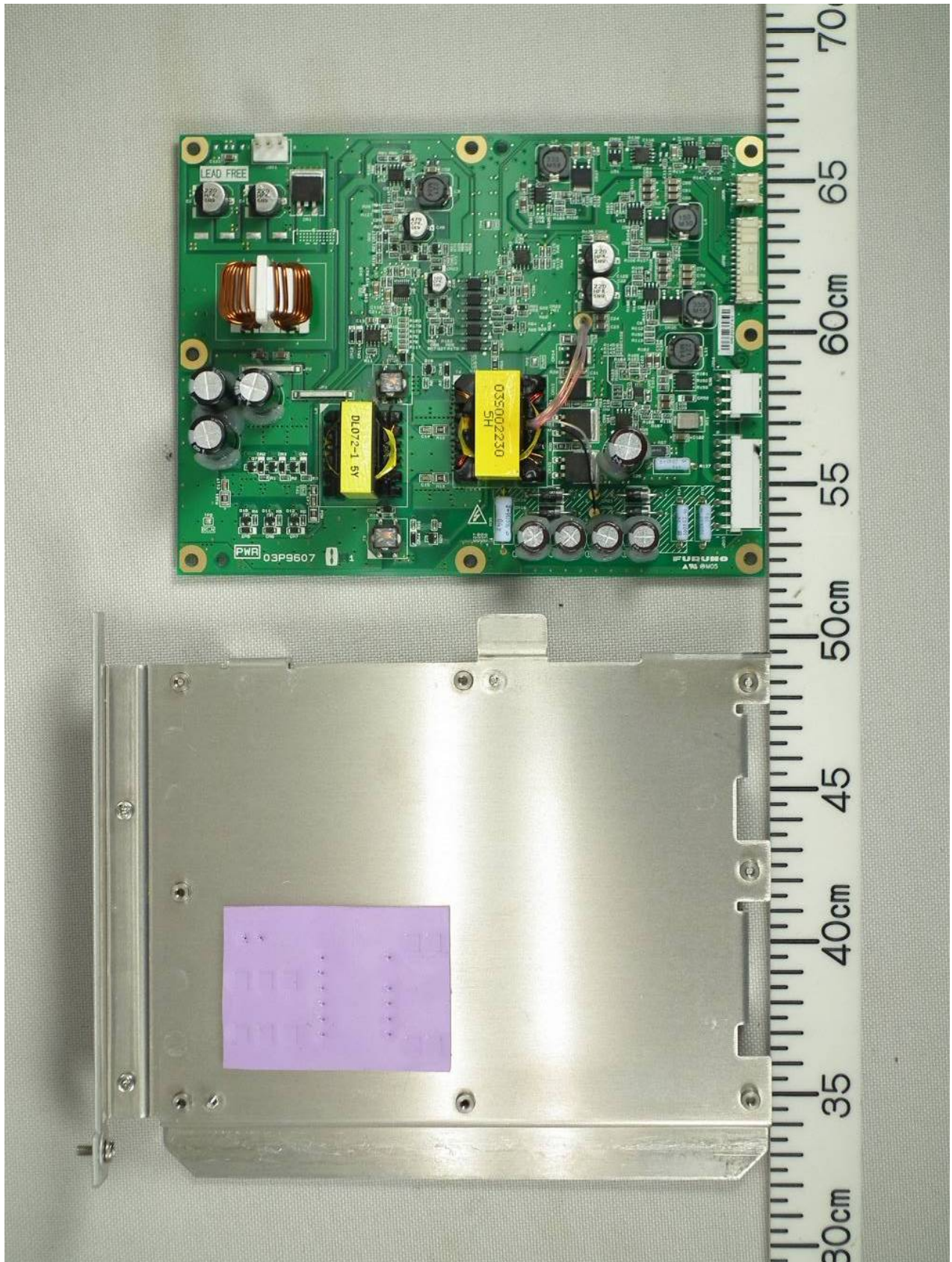
1.6 Power module Top View



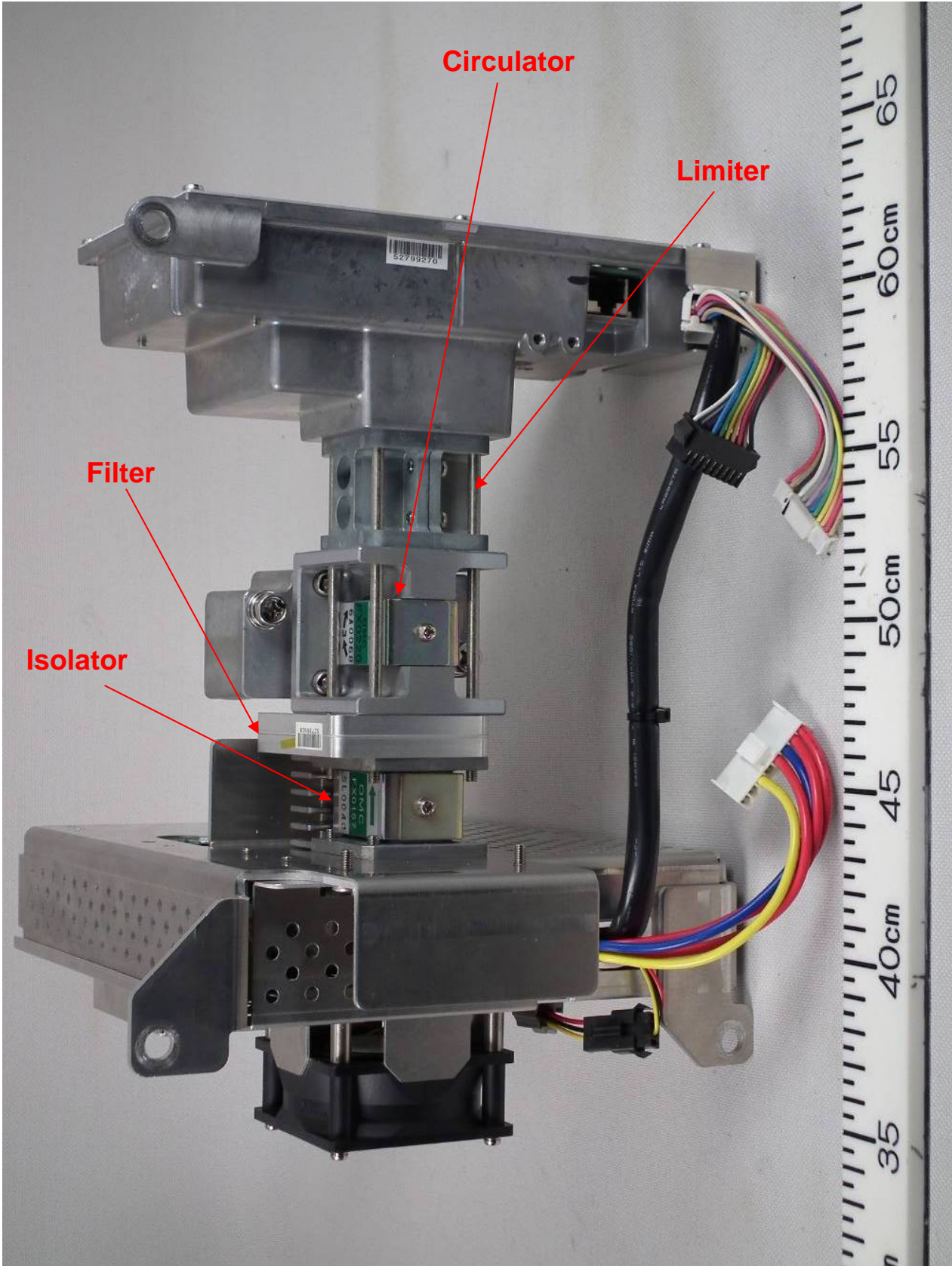
1.7 Power module (with Shield-cover removed, showing PWR Board 03P9607)



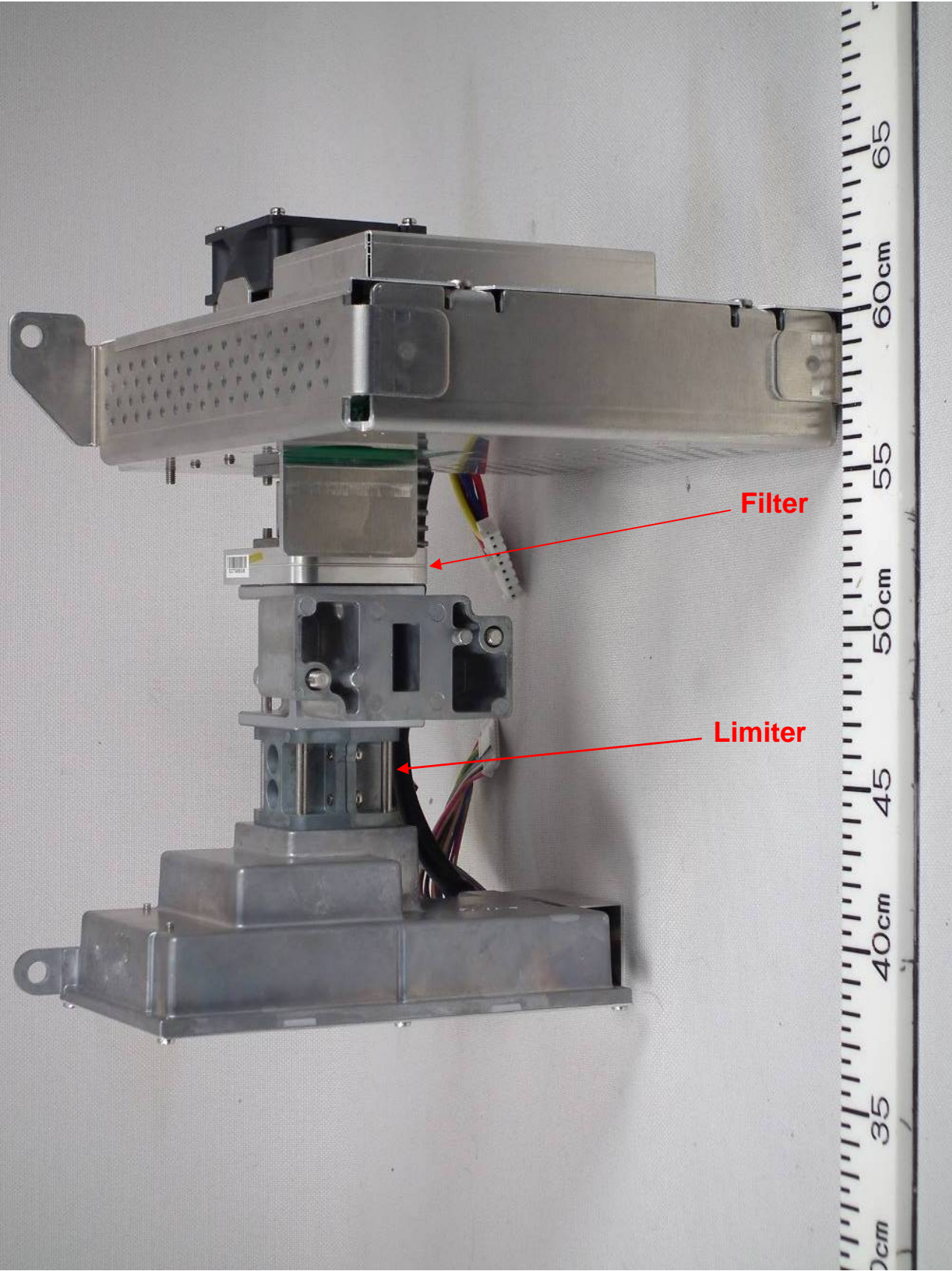
1.8 Power module (with PWR Board 03P9607 removed)



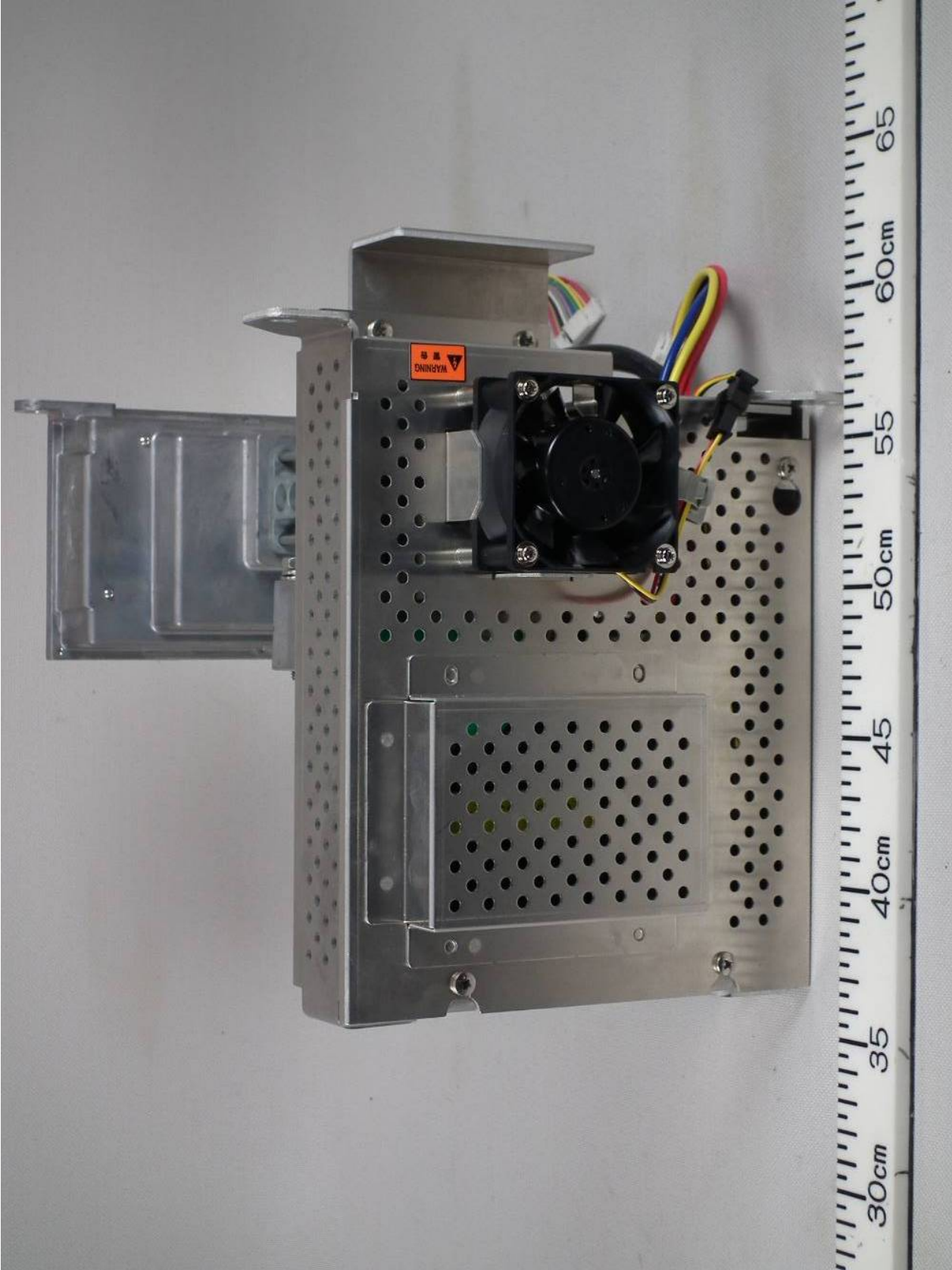
1.9 Transceiver Front side View



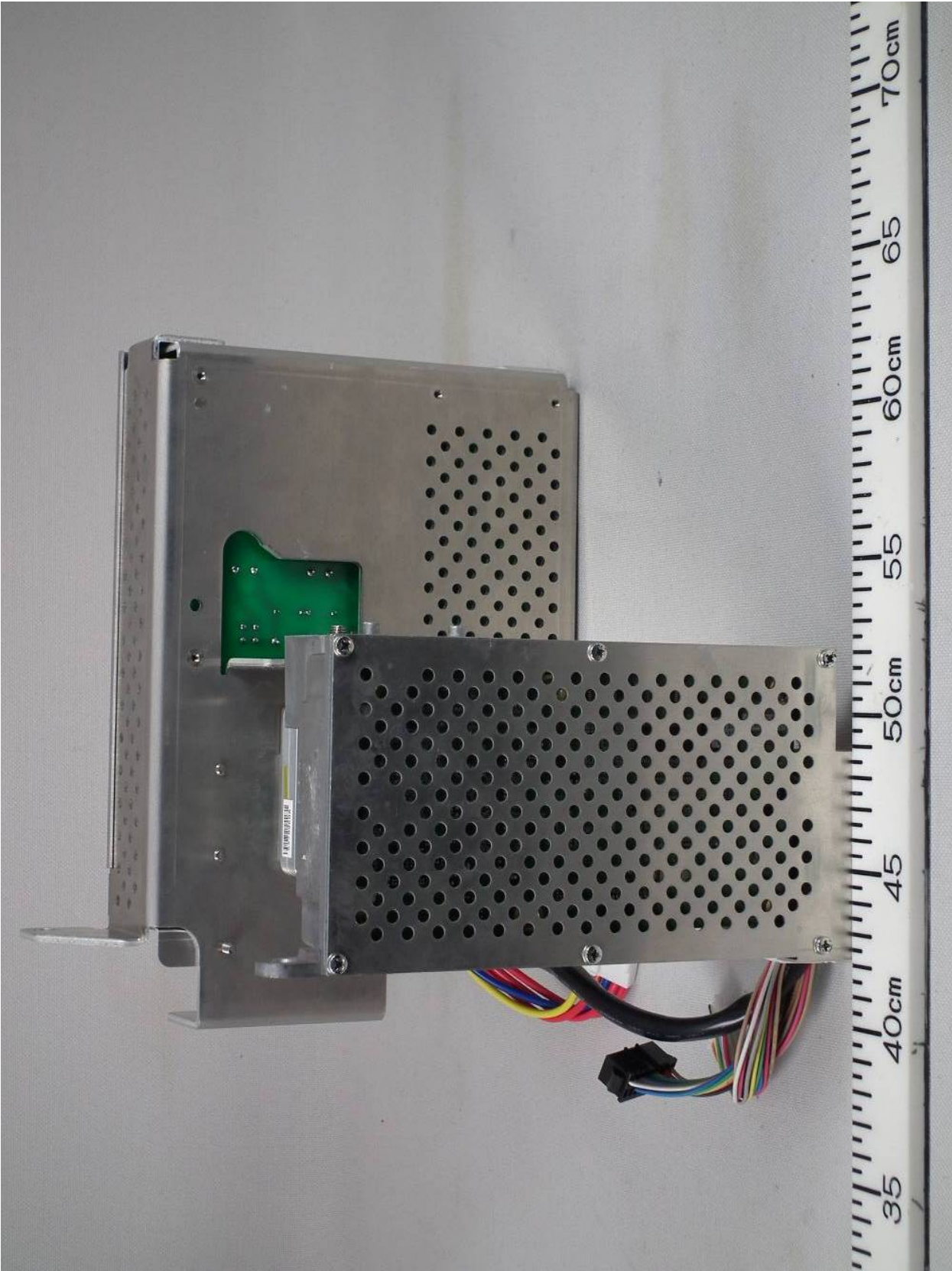
1.10 Transceiver Rear side View



1.11 Transceiver Left side View



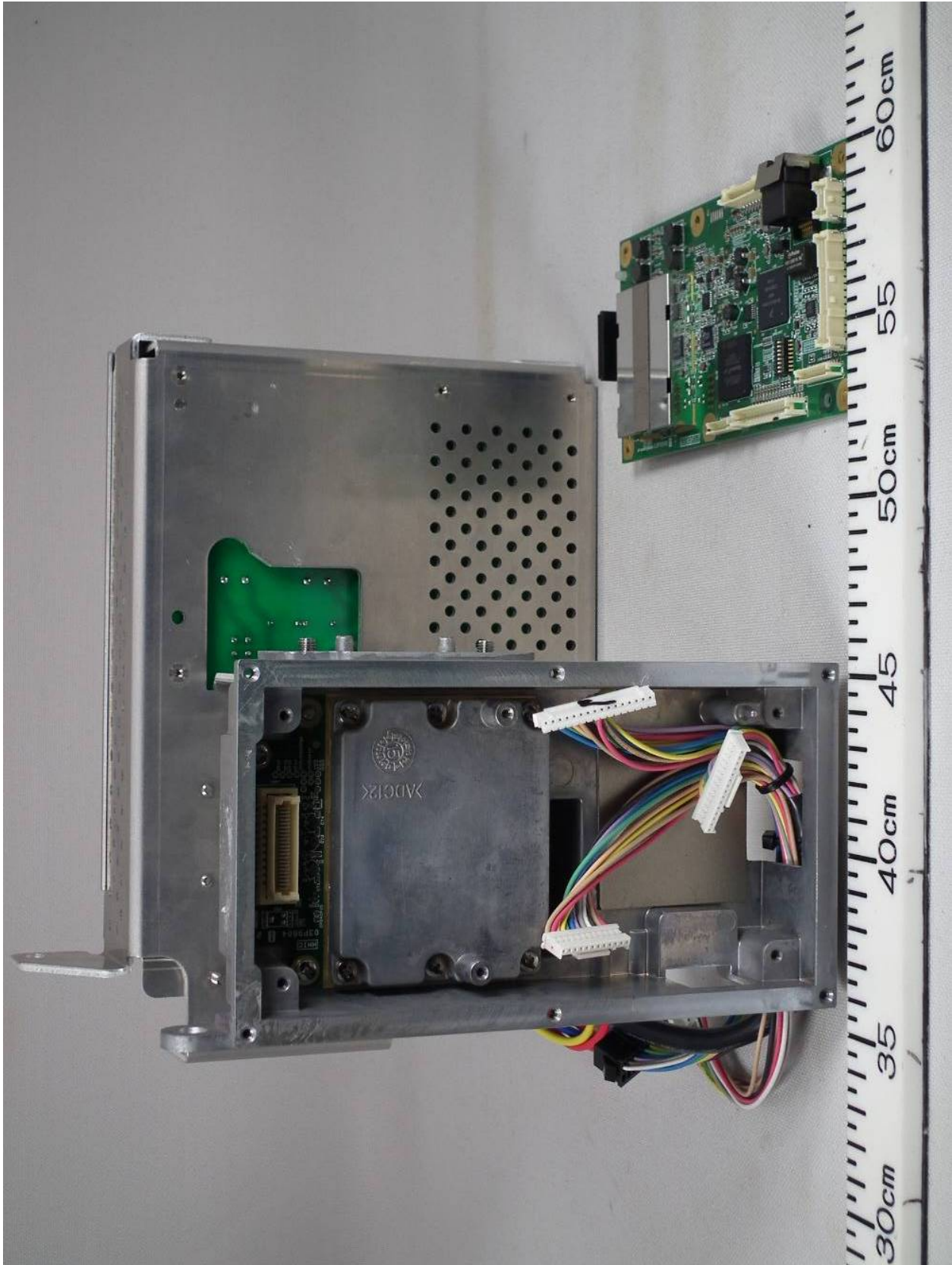
1.12 Transceiver Right side View



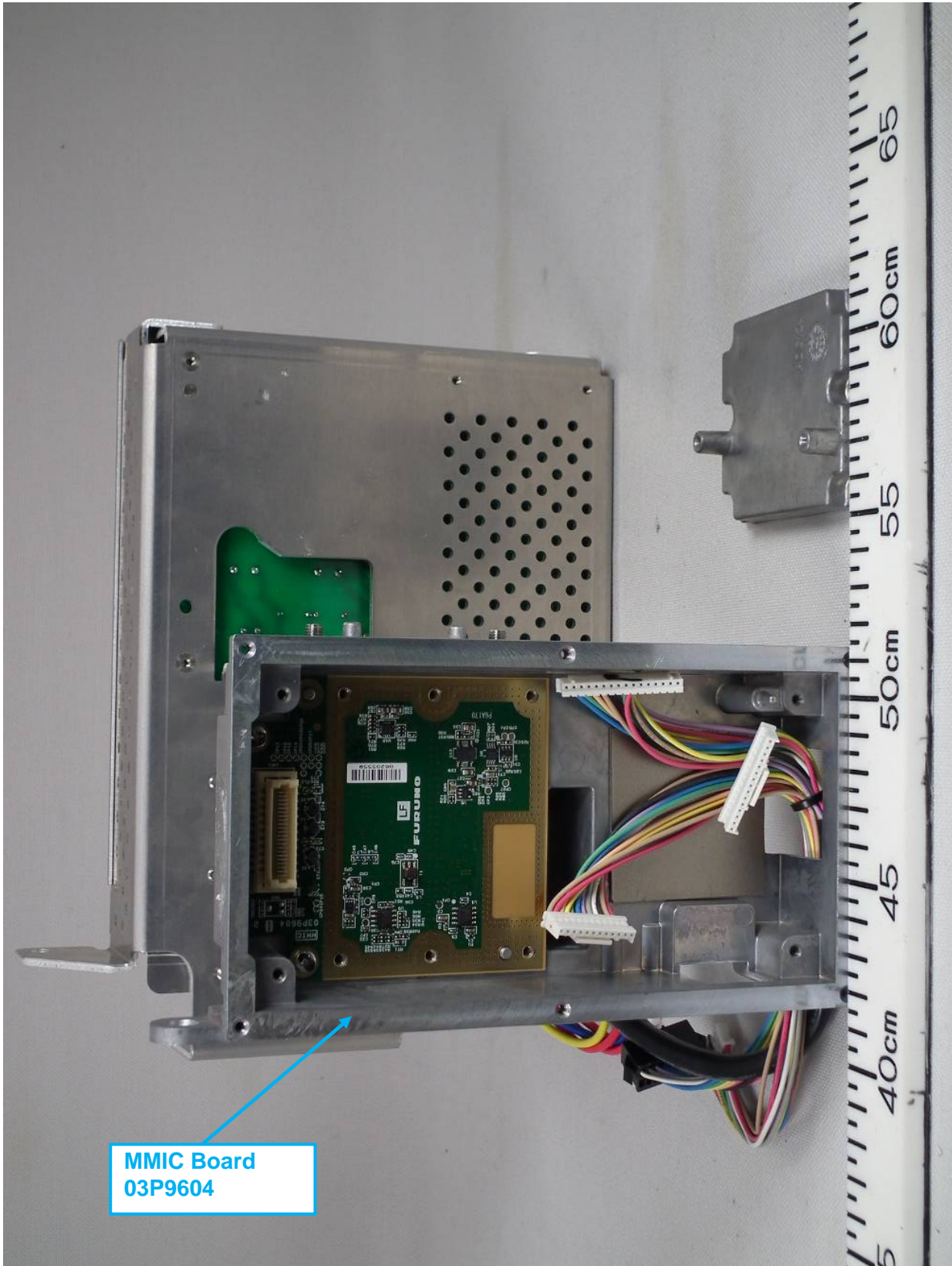
1.13 Transceiver Right side View (with Shield-cover removed, showing SPU Board 03P9598)



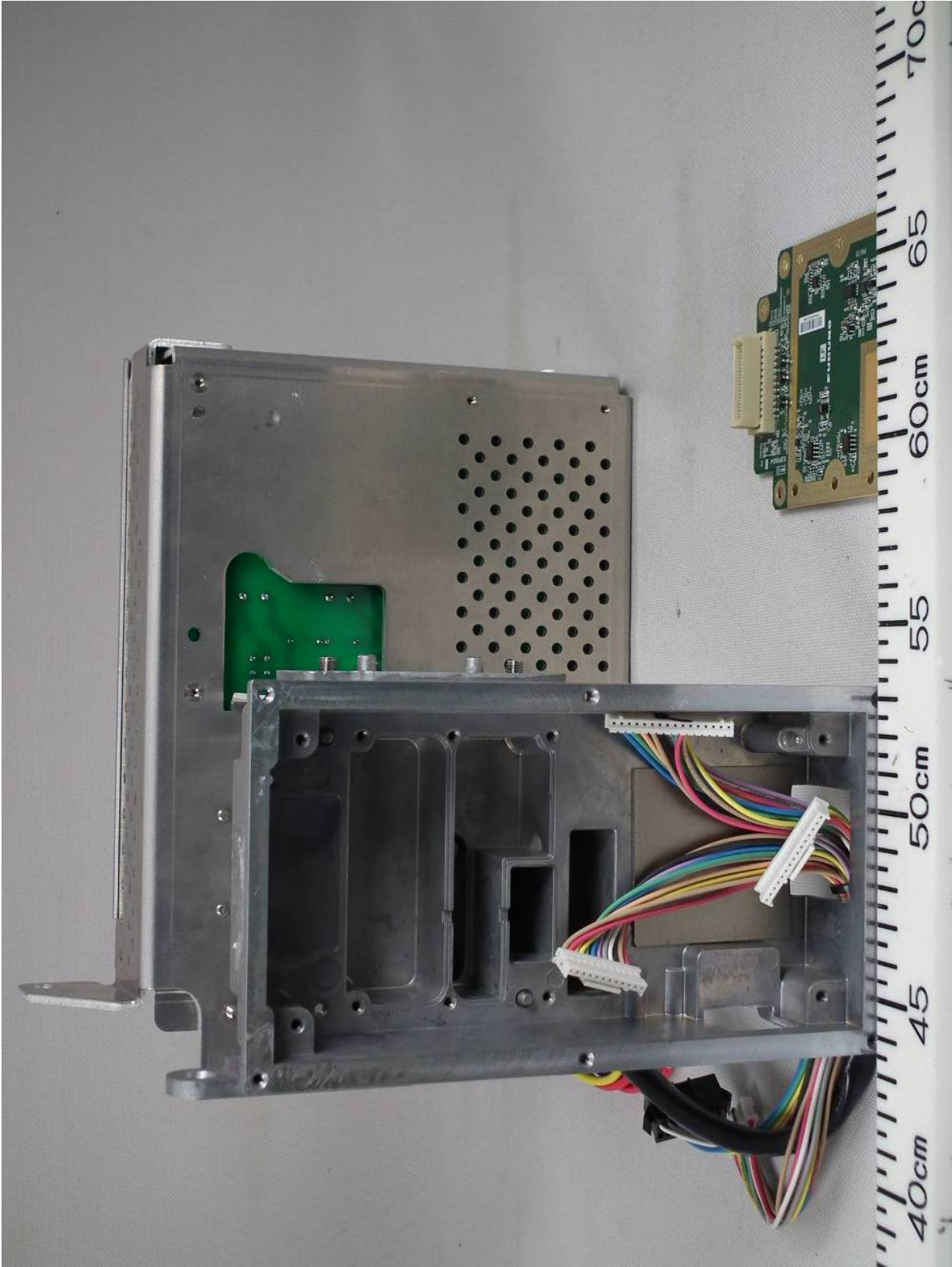
1.14 Transceiver Right side View (with SPU Board 03P9598 removed)



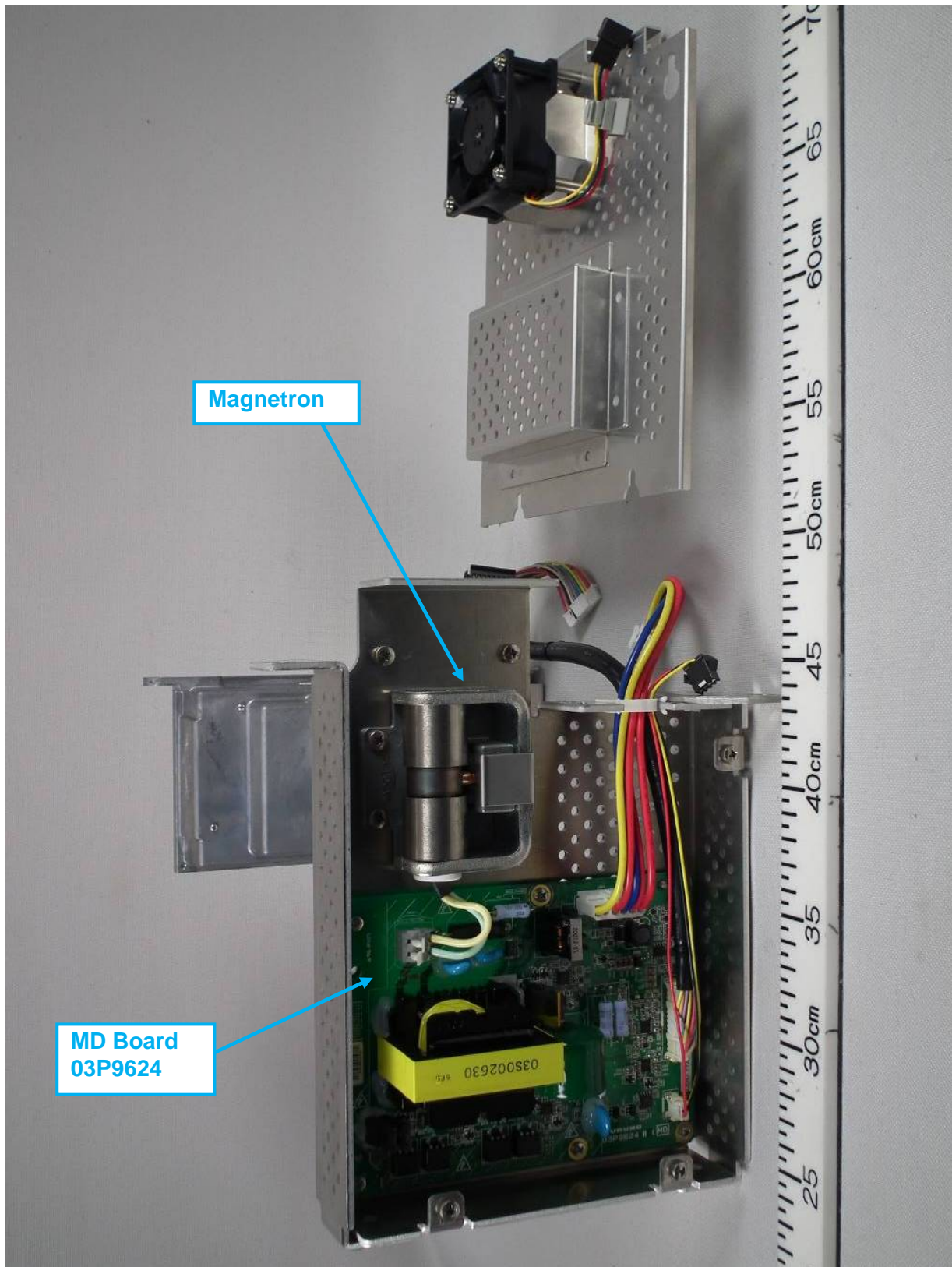
1.15 Transceiver Right side View (with Shield-cover removed, showing MMIC Board 03P9604)



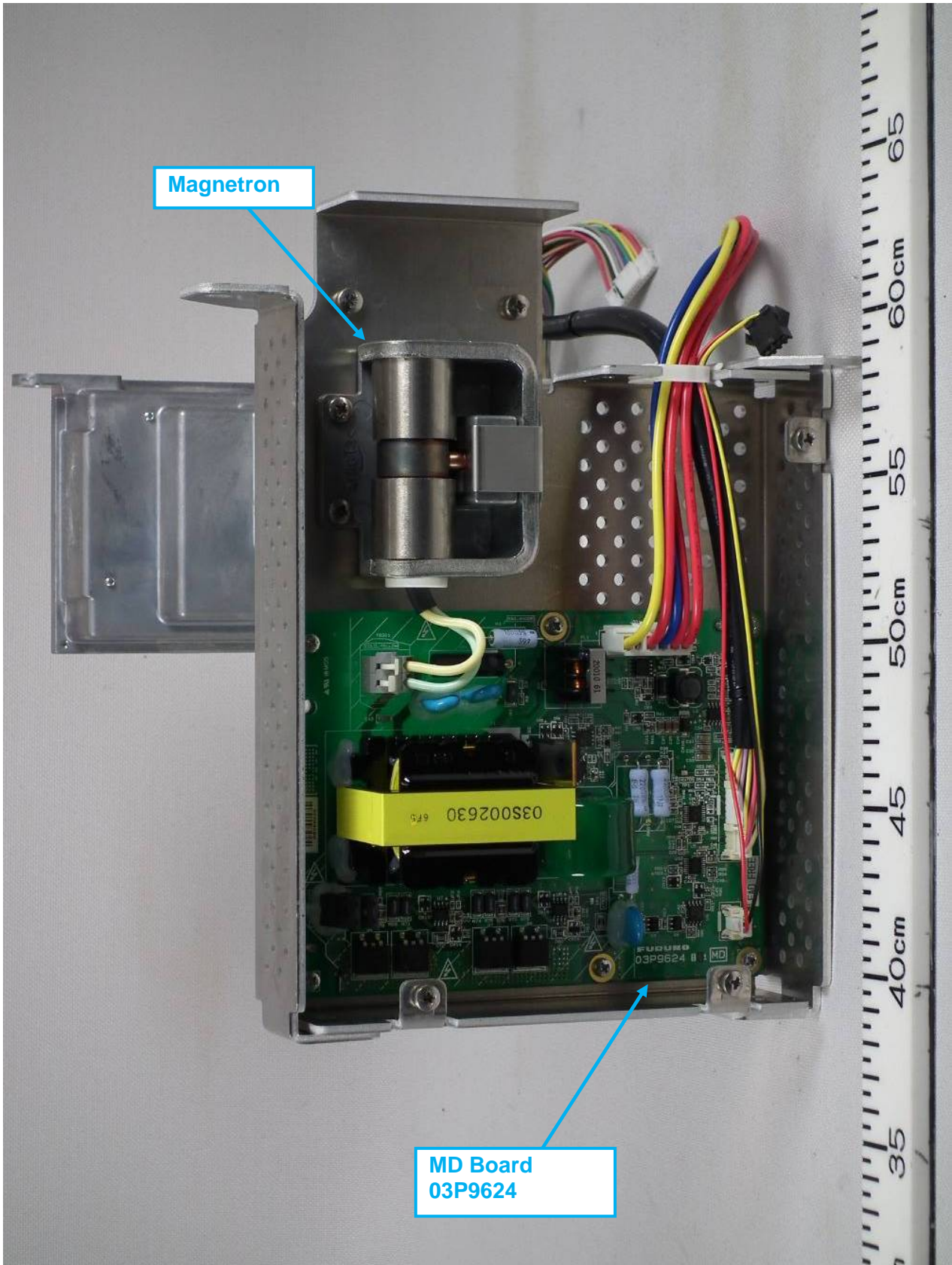
1.16 Transceiver Right side View (with MMIC Board 03P9604 removed)



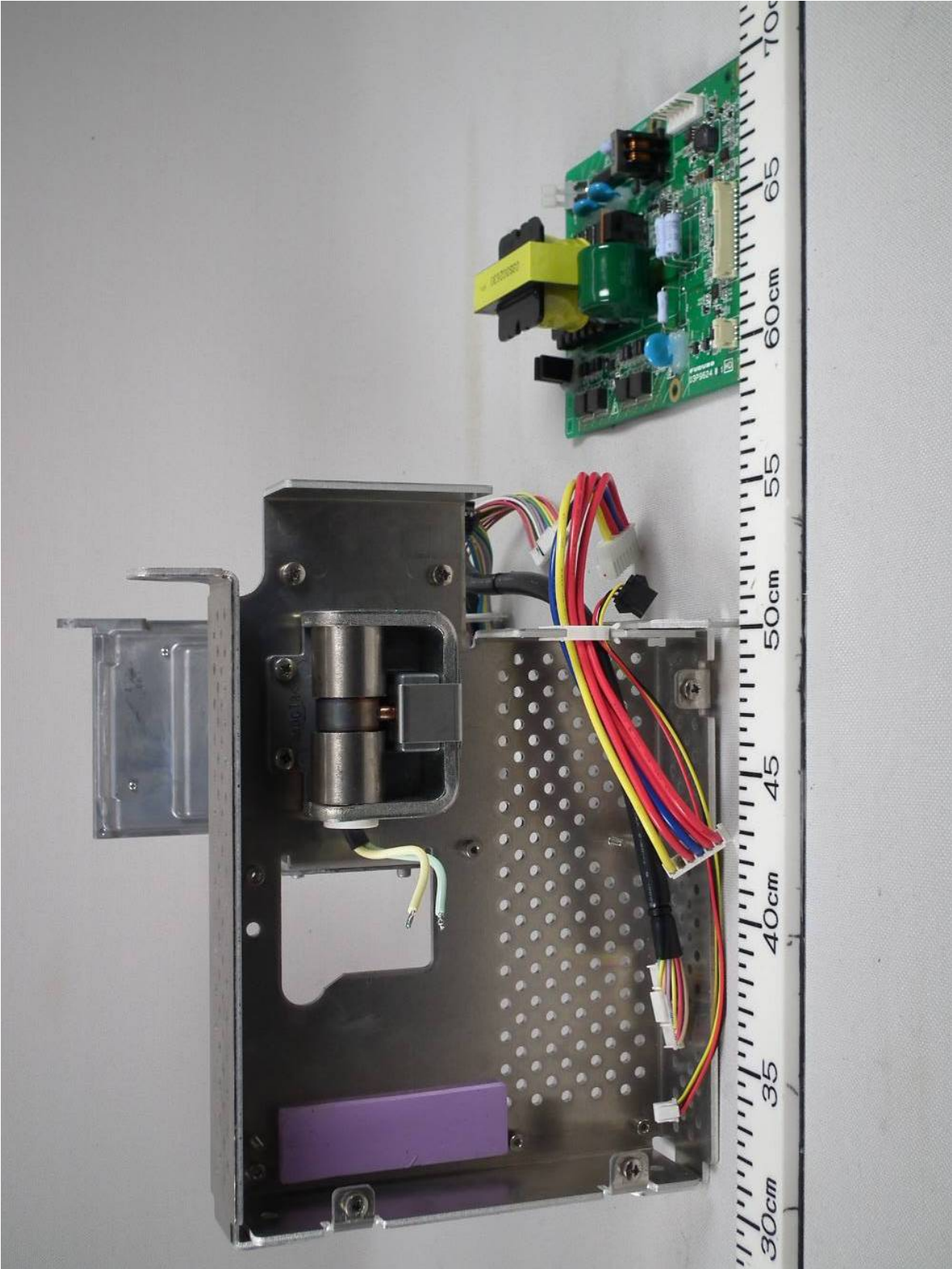
1.17 Transceiver Left side View (with Shield-cover removed, showing MD Board 03P9624 and Magnetron)



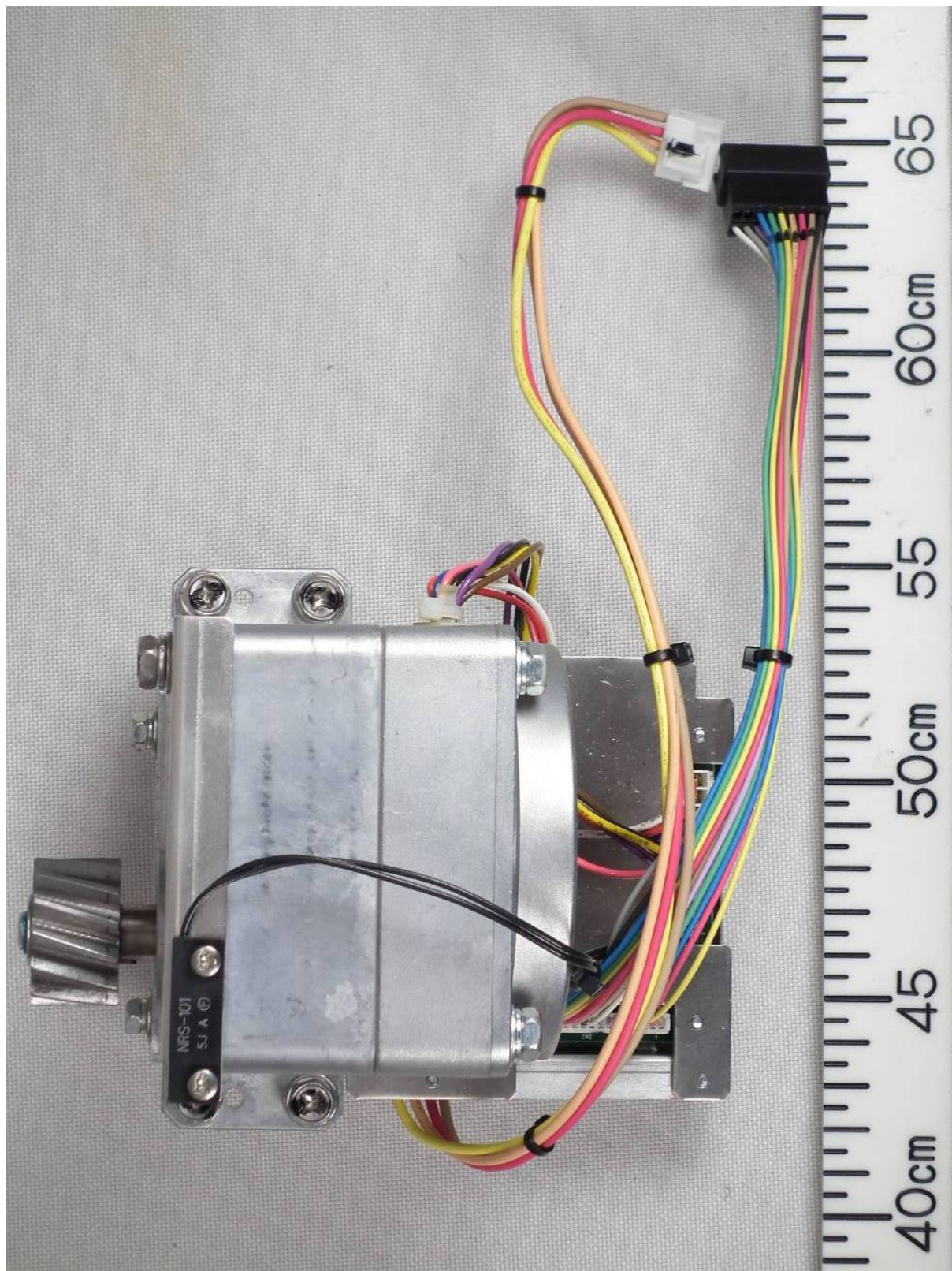
1.18 Transceiver Left side View (showing MD Board 03P9624 and Magnetron)



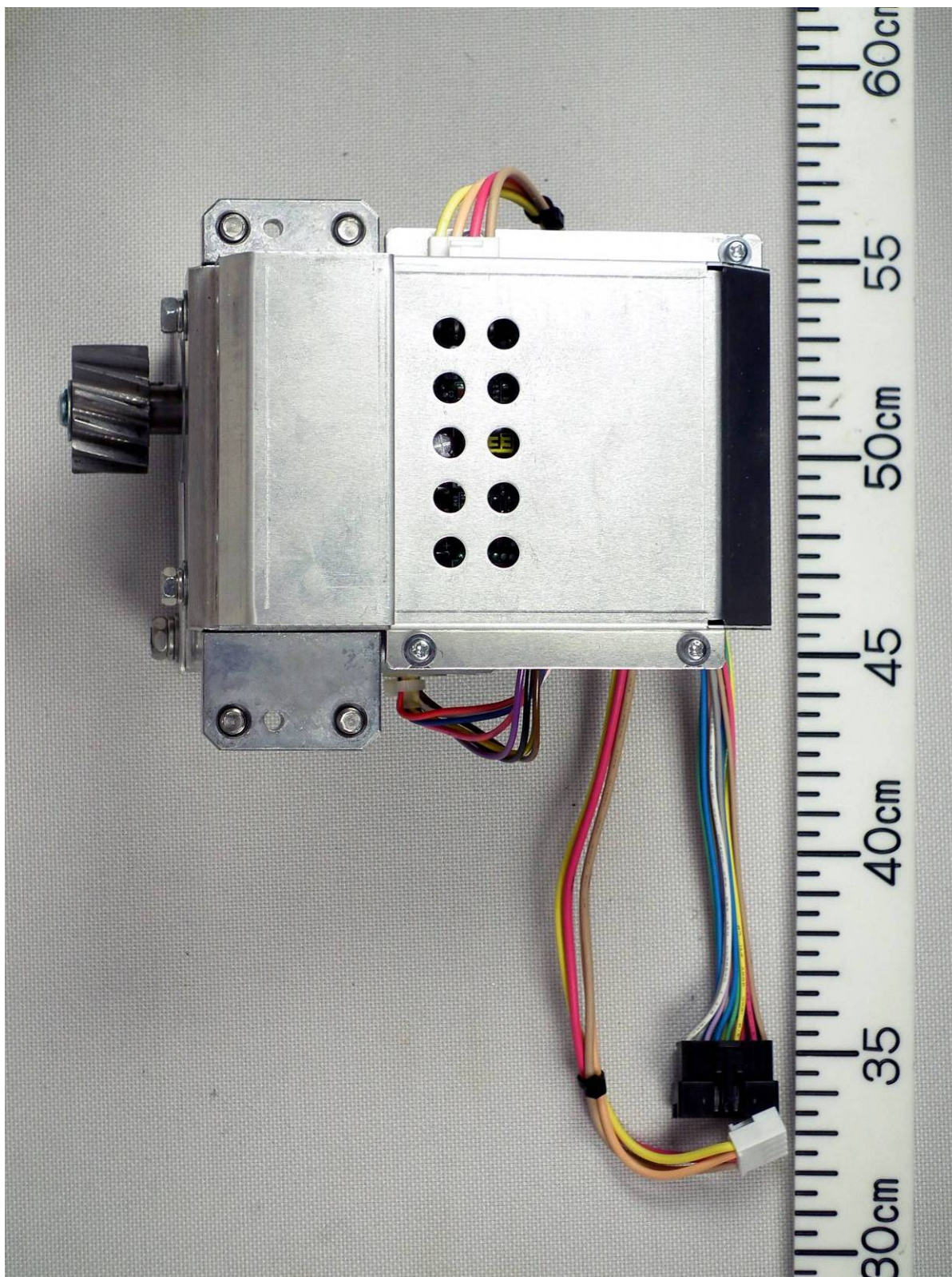
1.19 Transceiver Left side View (with MD Board 03P9624 removed)



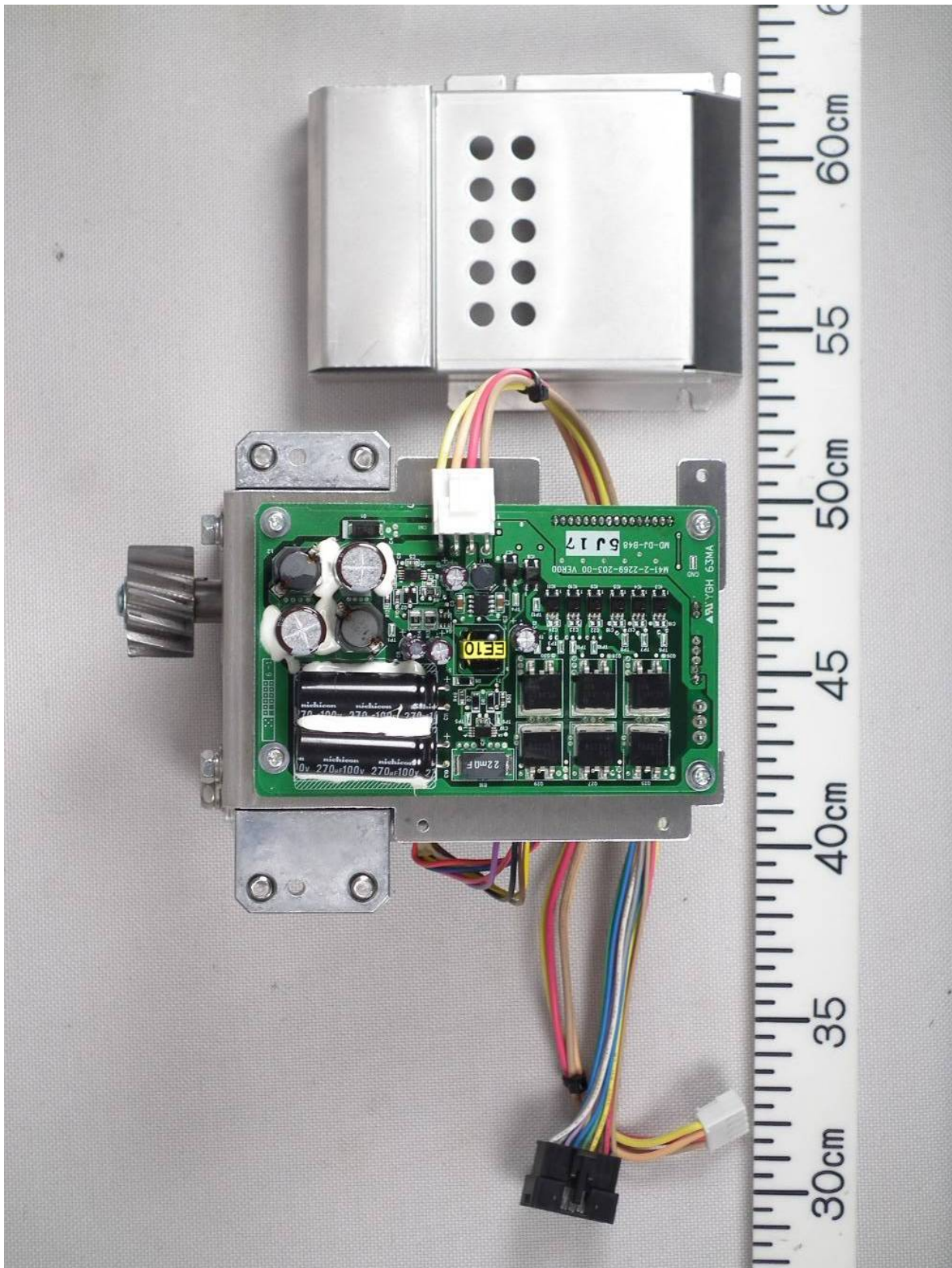
1.20 Motor module Front side view



1.21 Motor module Rear side view



1.22 Motor module Rear side view (with shield cover removed, showing MTR-DRV Board 14DJ003)



1.23 Motor module Rear side view (with MTR-DRV Board 14DJ003 removed)

