



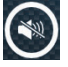



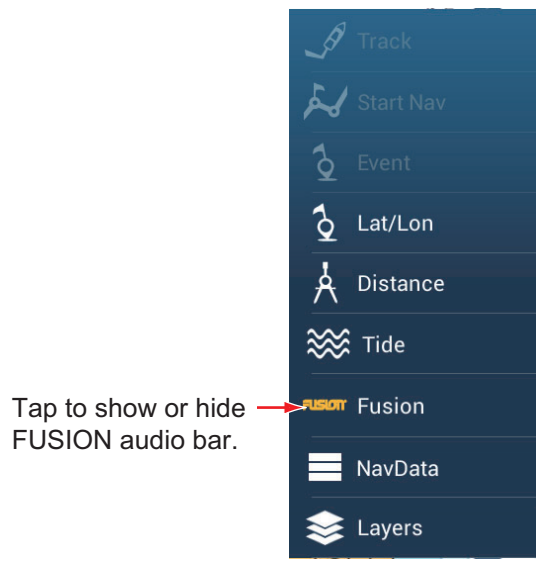
- 
 Select channel.
-  Lower volume.
-  Tap: Switch channel selection mode between preset and manual.  
 Long tap: After selecting channel in manual mode, long tap to register the channel as preset channel.
-  Mute/unmute.
-  Raise volume.

*Example2: VHF in the full screen*

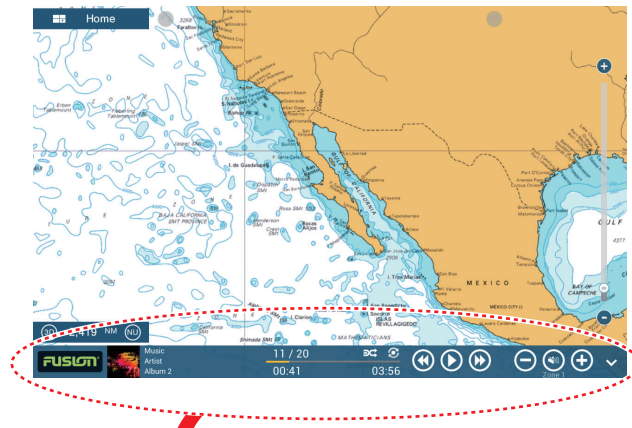
**Note:** For details, see the manual for the FUSION-Link equipment.

**Method 2:** Slide-out menu (for minimized window)

Tap [Fusion] to display the audio control bar on each display. The illustration on then next page shows the audio control bar for iPod and VHF on the plotter display.



## 9. CAMERA/VIDEO/FUSION-Link



Tap to go to full screen FUSION display.

Tap to hide bar.



*For iPod*



*For VHF*

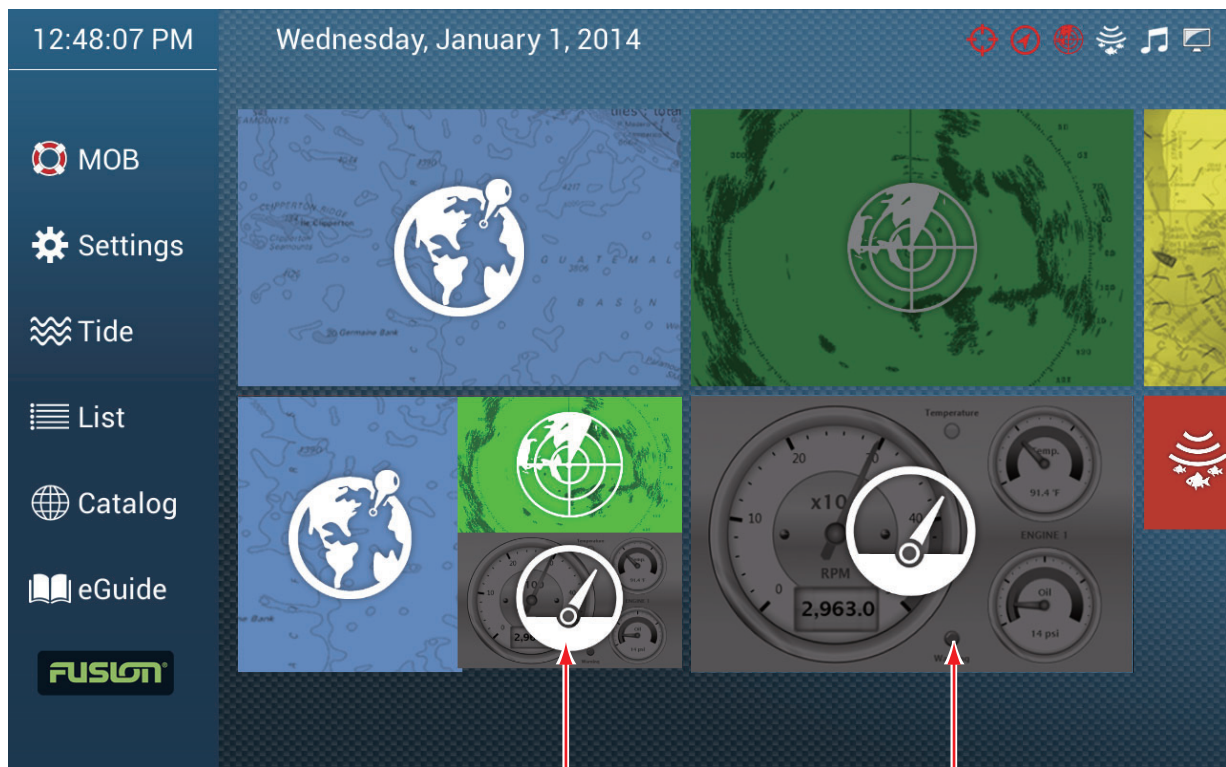
**Method 3:** Tap two fingers on the screen. Preset [Function Gesture] for [Fusion] (for full window) or [Fusion Bar] (for minimized window) (see section 1.15). Once you have done this preset, simply tap the screen with two fingers to access the FUSION controls.

# 10. INSTRUMENT DISPLAY

The instrument display gives you with navigation and environment display. The instrument display can be programmed to a full screen or three-way split screen. Applicable sensors are required.

## 10.1 How to Show the Instrument Display

Set the instrument display on the home screen referring to paragraph 1.7.1. Tap the instrument display icon.



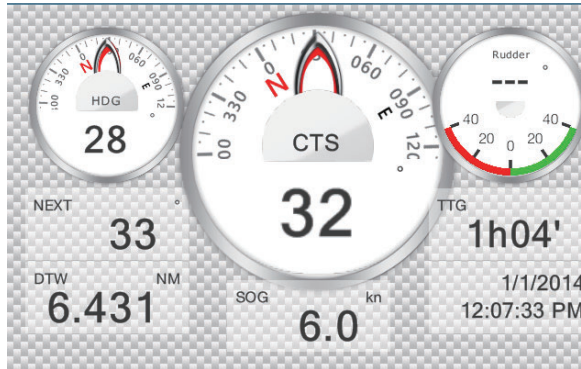
Instrument display  
(3-way screen)

Instrument display  
(full screen)

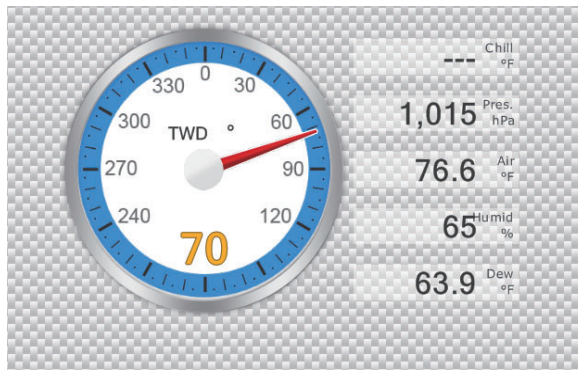


## 10.2.2 Split screen displays

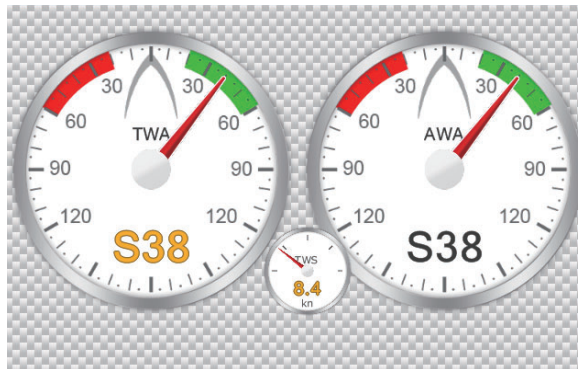
### Steering display



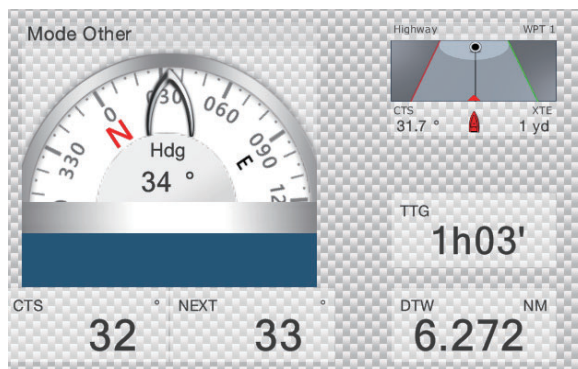
### Wind display



### True and apparent wind display



### Navpilot display



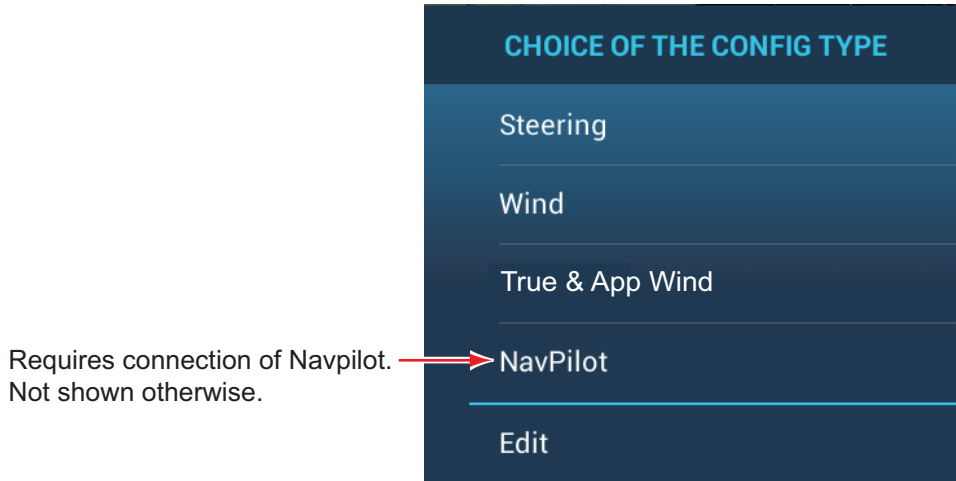
### 10.2.3 How to switch between instrument displays

#### 3-way split screen

You can choose from four basic instrument screens in the 3-way split screen: steering, wind, true and apparent wind, and NavPilot\*.

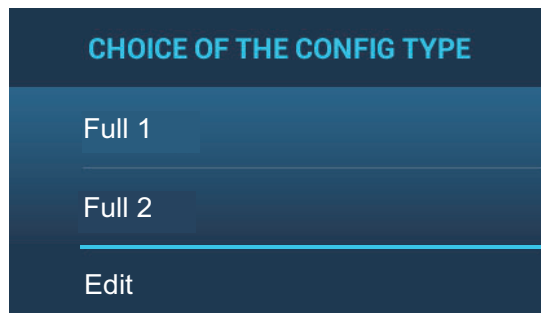
\* Requires 700 series NavPilot.

Tap the instrument display to show the pop-up menu. Tap the display of your choice.



#### Full screen

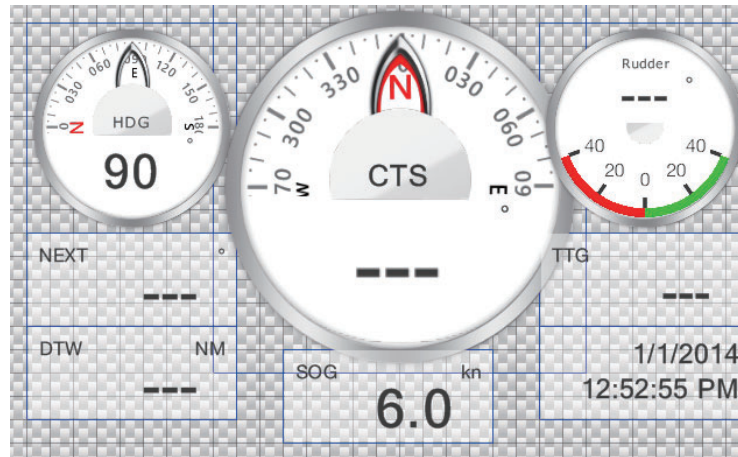
Two full screen instrument displays are available: [Full 1] and [Full 2]. You can switch between them by swiping downward at the bottom of the display, or tapping the screen to display the window shown below.



## 10.3 How to Edit the Instrument Display

The procedures below show you how to edit an instrument display that is part of a three-way split screen. The procedure for the full screen instrument display is similar.

To start the editing process, tap anywhere on the instrument display, then select [Edit] from the pop-up menu, or long tap the instrument display. A thin blue line is drawn around each indication in the display. Edit or add indications as required, referring to the procedures in this section. To save your changes, tap anywhere on the instrument display, then select [End Edit] from the pop-up menu, or long tap the display.



### 10.3.1 How to arrange the indications in the instrument display

Drag and drop the indications.

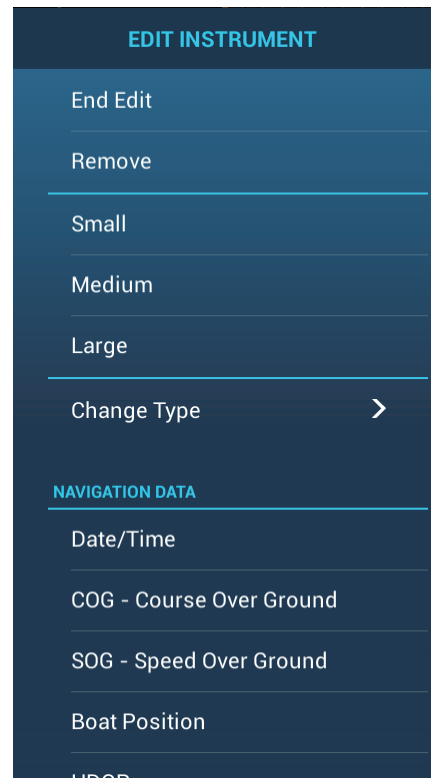
### 10.3.2 How to edit, remove an indication in the instrument display

Tap the indication to process to show the [EDIT INSTRUMENT] window. Select the appropriate action, referring to the instructions below.

**Remove indication:** Tap [Remove].

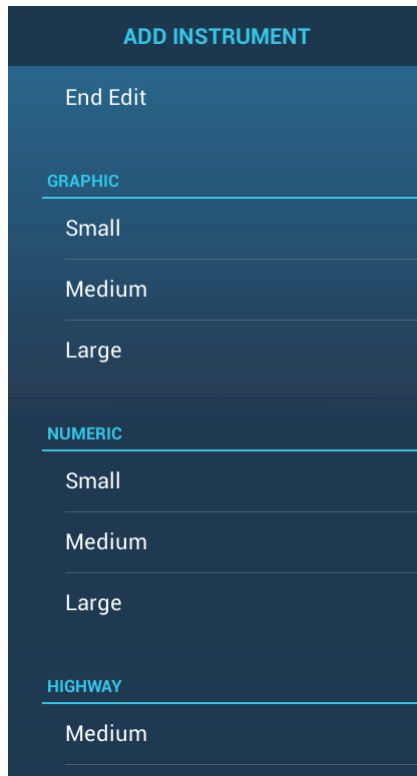
**Change indication type:** Tap [Change Type] to show the [EDIT INSTRUMENT] window. Tap a size in [Graphic], [Numeric], [Highway], or [Navplot].

**Change indication:** Tap required data, in the [NAVIGATION DATA] section.



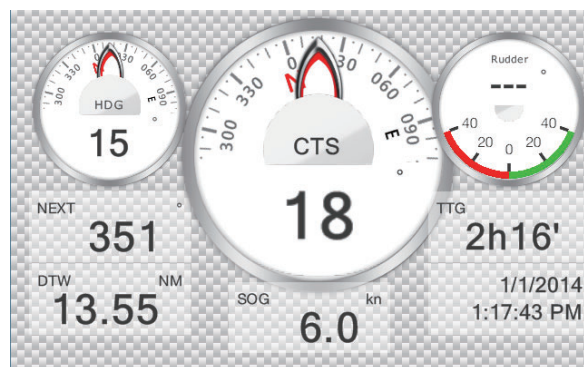
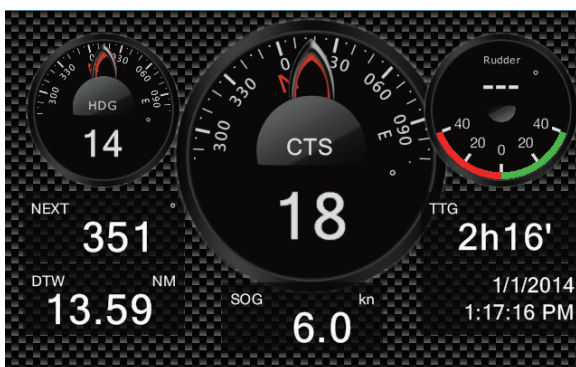
### 10.3.3 How to add an indication to the instrument display

Tap an unoccupied position in the instrument display to show the [ADD INSTRUMENT] window. Tap a size in [Graphic], [Numeric], [Highway], or [NavPilot]. Edit the indication as shown in paragraph 10.3.2.



## 10.4 Instrument Theme

The instrument theme is available in black or white. On the home screen, open [Settings] - [General]. Set [Instrument Theme] to [Black] or [White].





# 11. WEATHER

---

This equipment provides the weather information (Sirius (only U.S.) and NavCenter (worldwide)). When connected to the Sirius Weather Receiver BBWX2, the weather radar information can be displayed.

## **Sirius weather receiver**

- Purchase the Sirius Weather Receiver BBWX2.
- Purchase a Sirius weather service subscription. Contact Sirius Satellite Radio INC., for additional information.
- Connect the BBWX2 and the NavNet TZtouch2 displays then turn on both of those units. Your unit then receives WX data from the BBWX2, which takes approximately 30 minutes.
- During the installation of the equipment, the Installation Wizard checks if the BBWX2 is connected to this NavNet TZtouch2 unit. If the unit cannot find the BBWX2, check the connections between the two units.

## 11.1 Weather Display Introduction

Your system displays the current and forecasted weather information for your area. The weather information is updated in real time so that you have current weather information for your area and any area in the U.S.

Information provided by the Sirius Marine Weather service is advisory in nature. You, the customer, agree to release FURUNO ELECTRIC CO., LTD., Sirius Satellite Radio Inc., Navcast Inc. and WSI Corporation from any problems that occur from this service. And you acknowledge that you have read the conditions of your subscription agreement and agree to all the conditions of the subscription. If you do not have the subscription agreement, got to [www.sirius.com/marineweatheragreement](http://www.sirius.com/marineweatheragreement) or call 1-800-869-5480 to have a copy sent to you.

You can put a point on the weather display. Tap the screen where to put a point, then tap [New Point] on the pop-up menu.

## 11. WEATHER

### How to select the weather display

The weather display is overlaid on the 2D plotter display. Select the weather display on the home screen.



## 11.2 NavCenter Weather

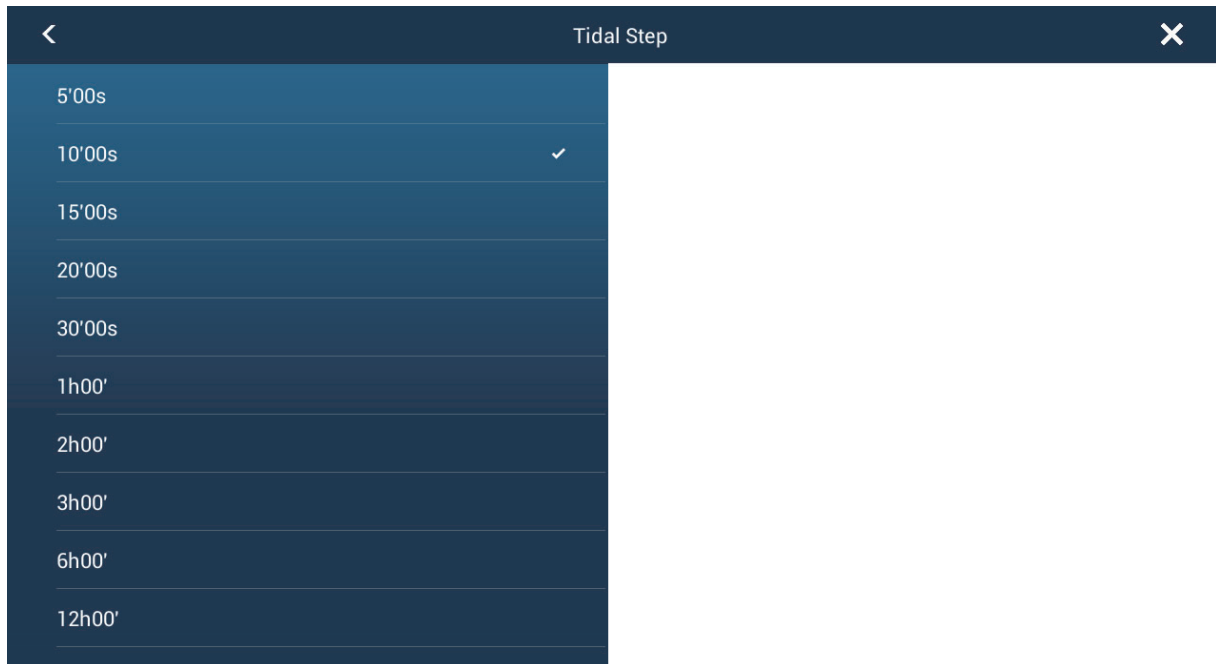
You can download the NavCenter data from the internet via Wireless LAN. See section 1.18 for how to connect to the internet.

**Note:** Data which is downloaded by a NavNet TZtouch2 unit can be shared with other NavNet TZtouch2 units via the network. Data is shared automatically; no operation is required.

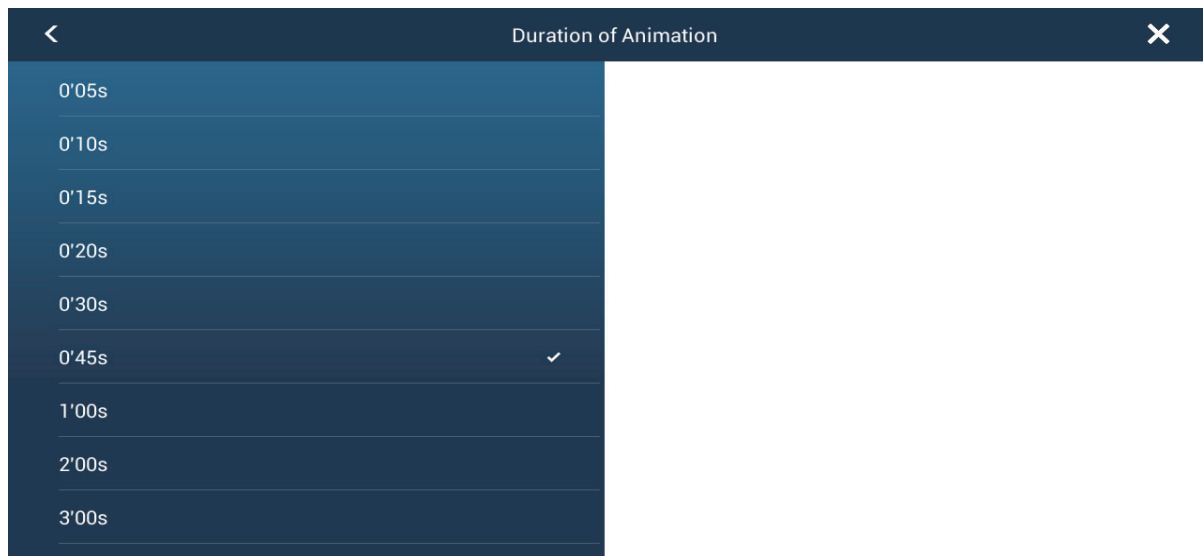
### 11.2.1 How to set up for NavCenter weather

1. Open the home screen, then tap [Settings] - [Weather].
2. Tap [Load Weather File].  
**Note:** The option [Sirius] appears when connecting BBWX2.
3. Tap [NavCenter] then tap < to return to the menu.

## 4. Tap [Tidal Step].



5. Tap the update interval (which determines how often tidal data are captured) for the tide icon.
6. Tap [Duration of Animation].



7. Tap the update interval for the animation. The larger the time, the slower the animation moves.

### 11.2.2 How to download the NavCenter weather data

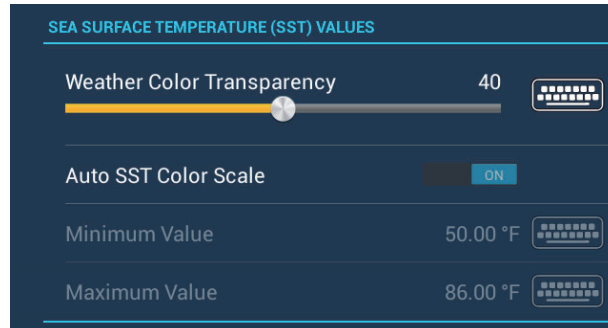
1. Open the home screen, then tap [Settings] - [General].
2. Tap [Wireless LAN Settings].
3. Turn on [Wireless].
4. After the internet connection is established, Tap the close button to exit.

## 11. WEATHER

5. Open the home screen, then tap [Settings] - [Weather].



6. Tap the data model from [Model] in the [NAVCenter Download] section. (The options are [USA] and [Worldwide].)
7. Drag the slider in [Forecast Days] to select how many days' data to download.
8. Turn on the items to receive, from [Wind] to [Plankton].
9. For [Sea Surface Temperature], set the following menu items.



**[Weather Color Transparency]:** Adjust the degree of transparency for the weather overlay. Use a large figure to increase the degree of transparency.

**[Auto SST Color Scale]:** Activate this feature to adjust the SST color scale automatically according to the sea surface temperature.

**[Minimum Value]:** Set the minimum value for the SST color when [Auto SST Color Scale] is deactivated.

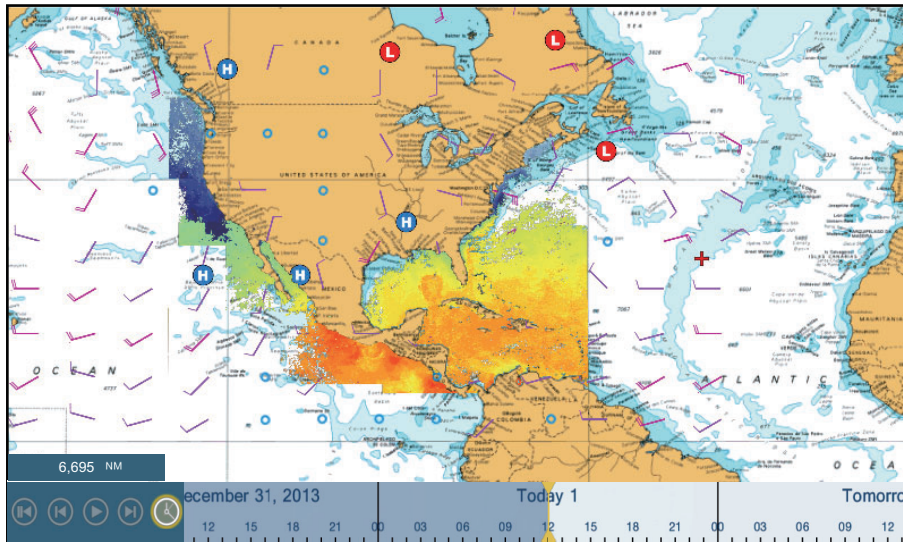
**[Maximum Value]:** Set the maximum value for the SST color when [Auto SST Color Scale] is deactivated.

10. Tap the close button to finish.
11. Open the weather display, then tap the screen to show the pop-up menu. Tap [Get Latest Wx].

The notification bar at the top of the screen flashes "Weather Update in Progress" during the downloading. If the downloading was successful, the message "DOWNLOAD SUCCEEDED" appears. Tap [OK] to finish.

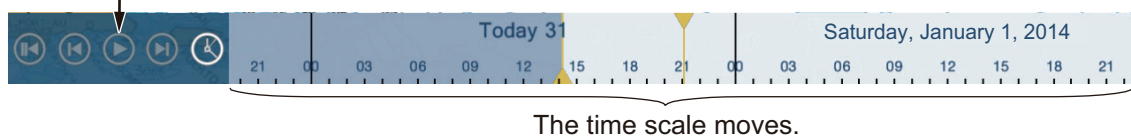
### 11.2.3 How to display the NavCenter data

The NavCenter data display provides forecast data that includes [Wind], [Waves], [SST] (sea surface temperature), [Cloud], [Rain], [Pressure], [500mb], [Air Temp], [Currents], [Altimetry], [Plankton].



1. Tap the screen to show the pop-up menu then tap [Wx Data].
2. Tap a menu item to display its data.
3. Repeat steps 1 and 2 to select all menu items required.
4. Tap [Anim Forecast] on the pop-up menu. The animation forecast is displayed for a specified-day period. To stop the animation display, tap [End Anim] at the top right-hand corner of the screen.  
You can operate the animation display with the animation bar at the bottom of the screen.

Tap to start or restart the animation display.



Tap to set the time scale to the current time and display the current data.  
Tap to suspend the animation display.

### 11.2.4 How to load a weather file

You can load a weather file saved on a micro SD card.

1. Set the applicable micro SD card in the SD card unit.
2. Open the home screen, then tap [Settings] - [Weather].
3. Tap [Load Weather File]. Tap the data to load then tap [OK].
4. After the equipment has loaded the selected data, tap the close button to finish.

## 11.3 Sirius Weather

Sirius weather radar information and advanced weather information are available in North America with connection of the Sirius Weather Receiver BBWX2.

### 11.3.1 How to set up for Sirius weather

1. Open the home screen, then tap [Settings] - [Weather].
2. Tap [Weather Data Server].
3. Tap [Sirius] then tap < to return to the menu.
4. Tap [Sirius Weather Radar].
5. Tap the Sirius weather radar to use, [US Now Radar] (USA) or [CanadRad] (Canada). [US Now Radar] shows the type and level of precipitation. The amount of precipitation increases with level.

*Precipitation indication on USNowRadar.*

| Weather radar color | Precipitation type | Level       |
|---------------------|--------------------|-------------|
| Light green         | Rain               | 15-19 dBz   |
| Medium green        | Rain               | 20-29 dBz   |
| Dark green          | Rain               | 30-39 dBz   |
| Yellow              | Rain               | 40-44 dBz   |
| Orange              | Rain               | 45-49 dBz   |
| Light red           | Rain               | 50-54 dBz   |
| Dark red            | Rain               | over 55 dBz |
| Light blue          | Snow               | 5-19 dBz    |
| Dark blue           | Snow               | over 20 dBz |
| Light pink          | Mixed              | 5-19 dBz    |
| Dark pink           | Mixed              | over 20 dBz |

*Precipitation indication on CanadianRadar*

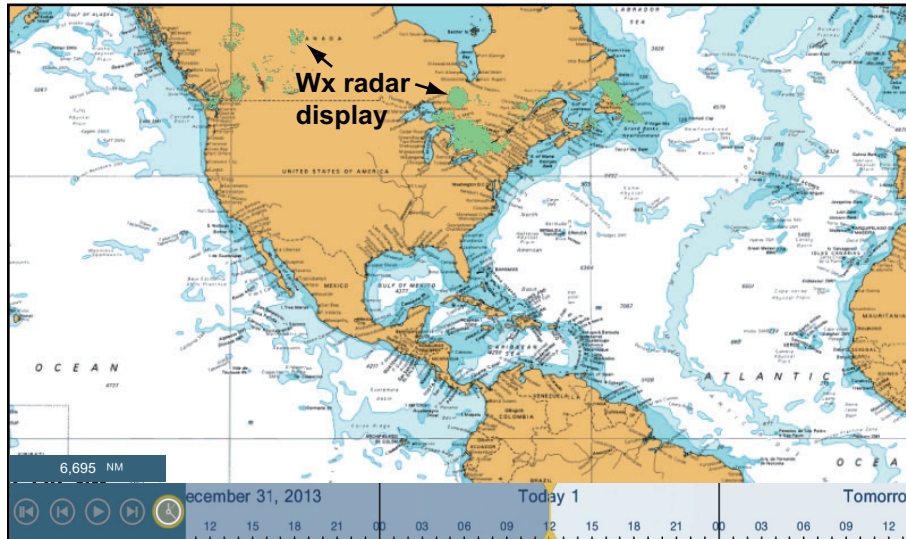
| Weather radar color             | Level (mm per hour)  |
|---------------------------------|----------------------|
| Transparent (low precipitation) | 0.00 to 0.20 mm/hr   |
| Light green                     | 0.21 to 1.00 mm/hr   |
| Medium green                    | 1.01 to 4.00 mm/hr   |
| Dark green                      | 4.01 to 12.00 mm/hr  |
| Yellow                          | 12.01 to 24.00 mm/hr |
| Orange                          | 24.01 to 50.00 mm/hr |
| Light red                       | 50.01 to 100 mm/hr   |
| Dark red                        | over 100.01 mm/hr    |

6. Tap the close button to finish.

## 11.3.2 How to display the Sirius data

### [Wx Radar] (Weather radar)

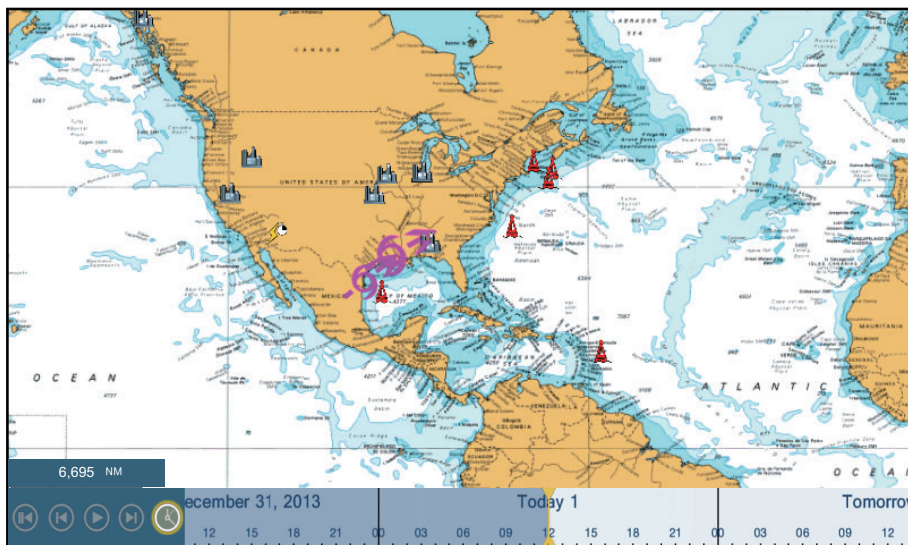
NOWRAD and Canadian weather radar information are put on top of your chart (see paragraph 11.3.1). This display lets you see possible storm fronts to help you identify the clouds from possible sea clutter. To display the weather radar, turn on [Wx Radar] from the pop-up menu.



### [Adv Wx Data] (Advanced weather)

The advanced weather display provides the weather data; [Buoys], [City], [Storm], [Lighting] or [Storm Tracks]. For the icons of these data, see section 11.4.

1. Tap the screen to show the pop-up menu, then tap [Adv Wx Data].
2. Tap a menu item to display its data.
3. Repeat steps 1 and 2 to select all menu items desired.



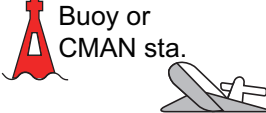







**[Anim Radar] (Animation radar)**

The animation radar display provides the past weather radar information. To show the animation radar display, tap [Anim Radar] on the pop-up menu. To stop the animation display, tap [End Anim] at the top right-hand corner of the screen.

## 11.4 Weather Icons (Sirius Weather)

The table below shows the weather icons that appear on the Sirius weather display. You can show or hide these icons from the pop-up menu, with [Wx Data].

| Icon  | Meaning                      |
|---|------------------------------|
|                | Storm cast                   |
|                | Lightning                    |
|               | Surface observation stations |
|              | Wind                         |
|              | City                         |
|              | Currents                     |
|              | Storm tracks                 |
|  <p>etc.</p> | Surface pressure             |