

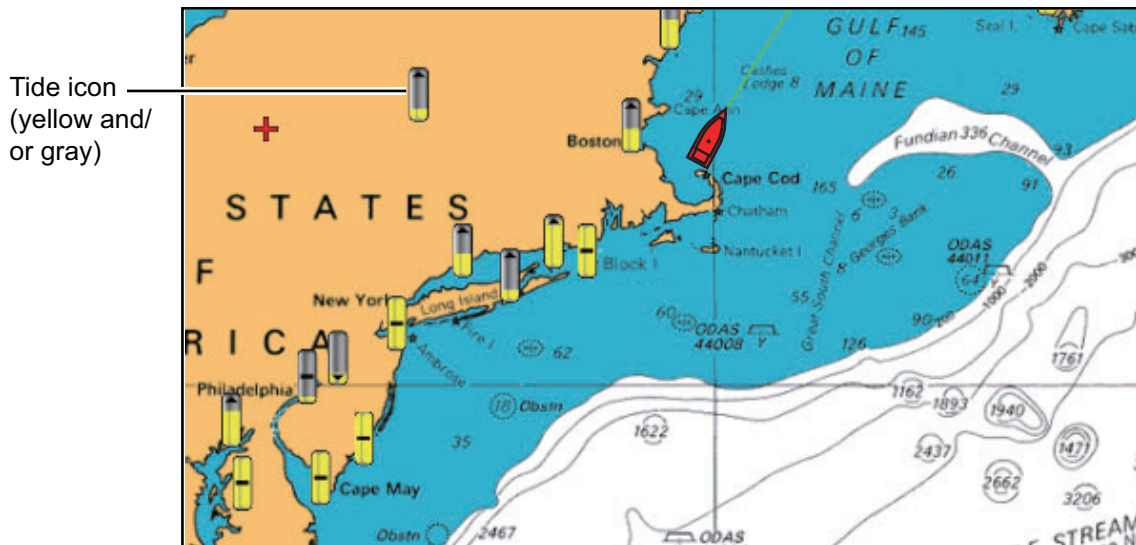
### 3.2.4 Tide info overlay

Your system carries worldwide tidal and tidal current information, shown with tide icons, which you can overlay on the plotter display. The tide icon (📏) appears at the locations of tidal recording stations.

#### How to display the tide info overlay

Open the [Layers] menu, then tap [Tide Heights].

The arrow on the tide icon is up when the tide is high, or is down when the tide is low. The tide icon is gray and yellow according to the tide state. The tide icon is all yellow when the tide is high completely and all gray when the tide is low completely.



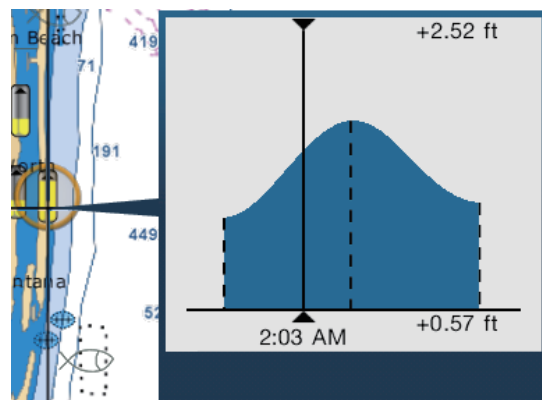
- : Up arrow indicates the tide is going high. : Down arrow indicates the tide is going low.
- : No arrow indicates no change in tide.

#### How to change the size of the tide icon

1. Open the home screen, then tap [Settings] - [Plotter].
2. Drag the slider at [Tide/Current Icons Size] to set size (setting range: 50 to 150%).
3. Tap the close button to finish.

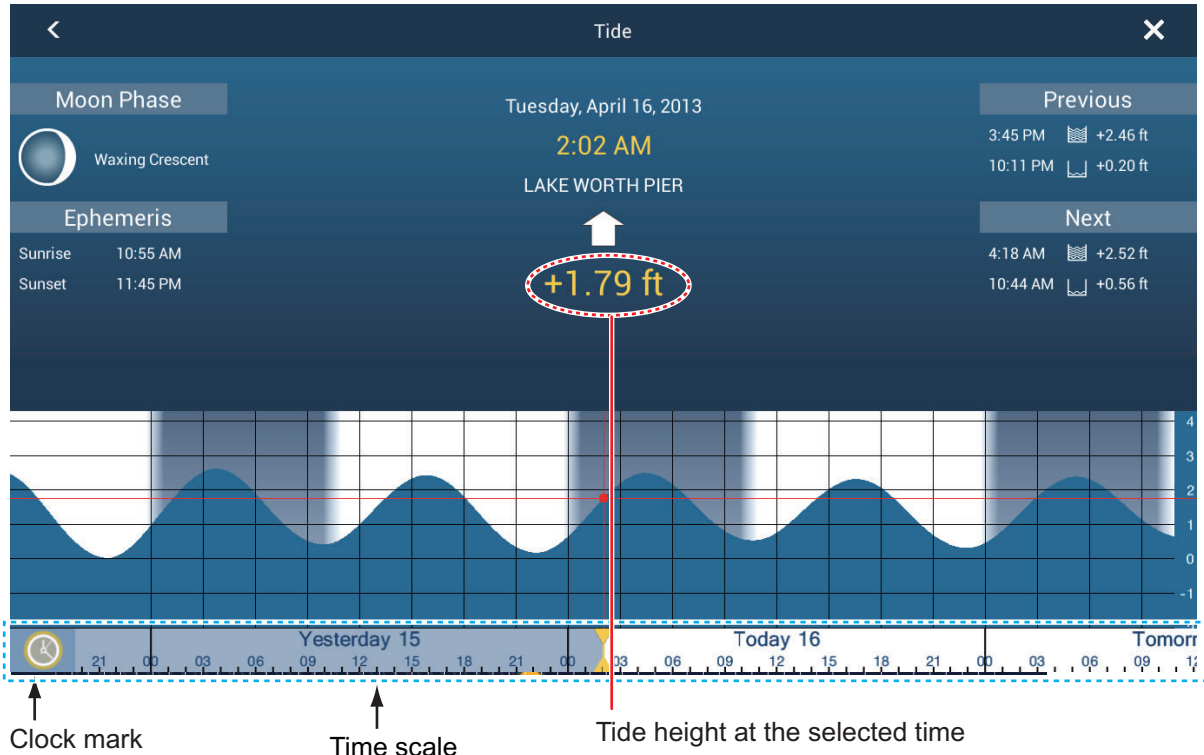
#### How to show the tide information

Tap a tide icon to display the information about a tide in a pop-up window, and example of which is shown in the right figure. The tide height for that area appears.



### How to display the tide graph

- **Display tide graph for a tide station:** Tap a tide icon then tap the pop-up menu.
- **Display tide graph for the tide station nearest the selected position:** Tap the desired position on the chart, then tap [Info].
- **Display tide graph for the tide station nearest current position:** Open the slide-out menu or the Home screen, then tap [Tide].



### How to read the tide graph

- Vertical axis: Height, Horizontal axis: Time
- The information is mostly accurate under moderate weather conditions. However, storms and weather fronts can influence forecasted tide times and heights.
- Drag the time scale at the bottom of the screen sideways then read the tide height at the selected time (drag to the left to display the future information, right for the past information).
- To set the time scale to the current time, tap the clock mark at the bottom left-hand corner of the screen. The color of the clock mark turns gold.



Clock mark for the current time



Clock mark other than the current time

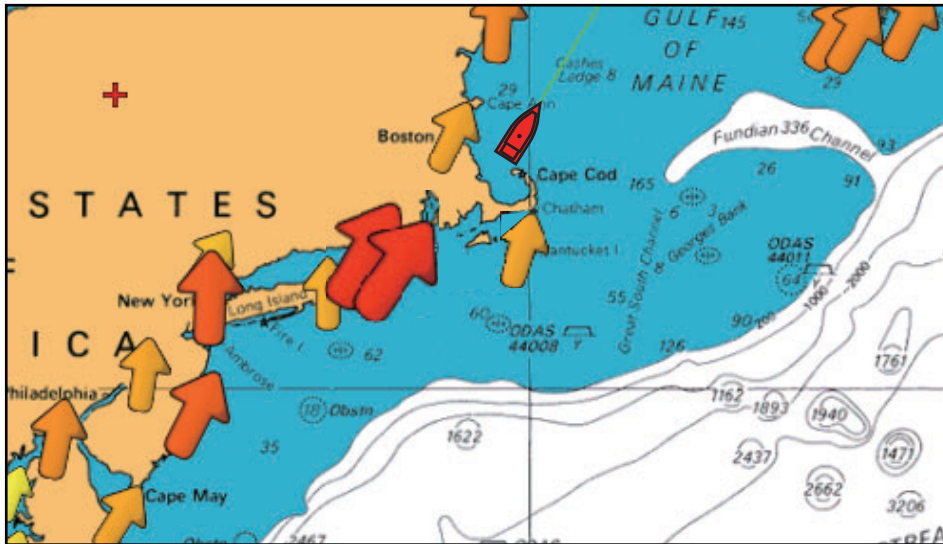
- To exit the screen, tap the close button.

### 3.2.5 Tidal current overlay

The tidal current overlay is made from the tidal current data received from NOAA satellites, available in North America.

#### How to display the tidal current overlay

Open the [Layers] menu, then turn [Tidal Currents] on. Arrows of more than one color and size appear on the screen and are pointing in different directions.

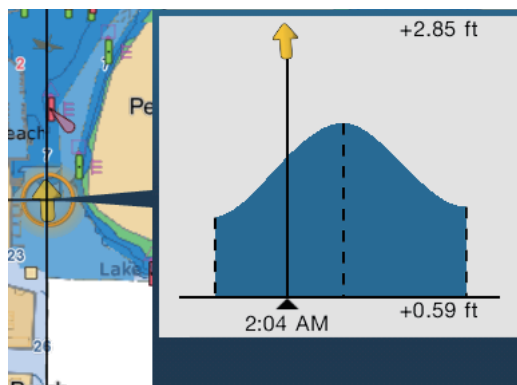


The arrow indicates the movement of the tidal current. The size and color of the arrow indicate the tidal current speed (yellow: slow, orange: medium, red: fast).

#### How to change the tidal current icon size

1. Open the home screen, then tap [Settings] - [Plotter].
2. Drag the slider at [Tide/Current Icons Size] to set size (setting range: 50% to 150%).
3. Tap the close button to finish.

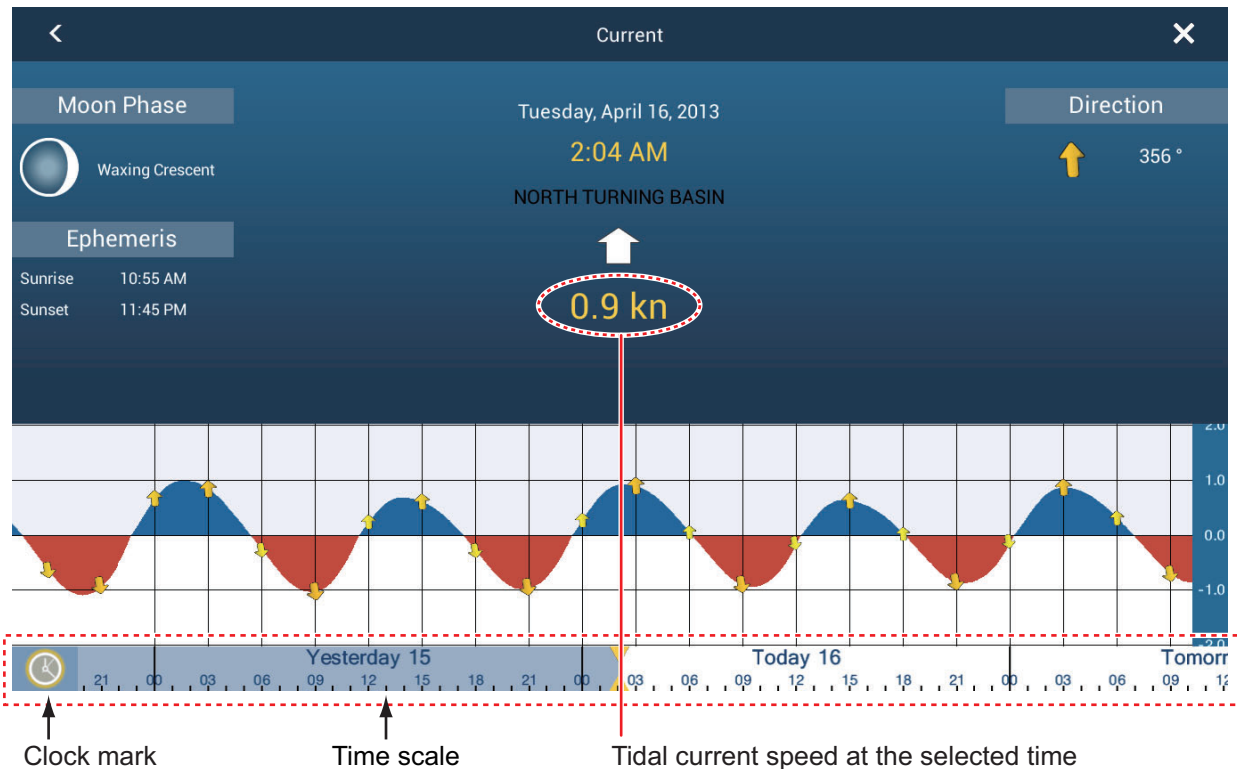
#### How to show the tidal current information



Tap a tidal current icon to display the tidal current information for the position selected.

### How to display the tidal current graph

Tap a tidal current icon then tap [Info] on the pop-up menu. You can display the tidal current graph to select the call-out for the tidal current information instead of the [Info] pop-up menu.



### How to read the tidal current graph

- Vertical axis: Speed, Horizontal axis: Time
- The information is mostly accurate under moderate weather conditions. However, storms and weather fronts can influence forecasted tidal current directions and speeds.
- Drag the time scale at the bottom of the screen sideways then read the tidal current speed at the selected time (drag to the left to display the future information, right for the past information).
- To set the time scale to the current time, tap the clock mark at the bottom left-hand corner of the screen. The color of the clock mark turns gold.



Clock mark for the current time



Clock mark other than the current time

- To return to the plotter display, tap the Close icon at the top right-hand corner of the screen.

### 3. 3D DISPLAY, OVERLAYS

This page is intentionally left blank.

# 4. POINTS


---

## 4.1 About Points

In navigation terminology, a point is any location you put on the plotter display. A point can be a fishing spot, reference point and other important locations. You can use a point you have entered to set a destination.

This unit has 30,000 points into which you can enter position information.

When you enter a point, the point is put on the screen with the point symbol selected as the default point symbol. The position of the point, symbol and color information are saved to the points list. You can show or hide the points, and the default setting shows all points.

Default point symbol (black circle in yellow circle) 

You can edit a point on the screen or the points list.

**Note:** Points can be shared with other NavNet TZtouch2 units via LAN. Data is shared automatically; no operation is required.

## 4.2 How to Enter a Point, Event Mark

### 4.2.1 How to put a point at selected position

#### **Method 1: Tap the screen**

1. Tap the position on the screen where to put a point.
2. Tap [New Point] on the pop-up menu.

The default point symbol is put at the position selected and the point is saved to the points list.

#### **Method 2: At own ship position**

Open the slide-out menu, then tap [Lat/Lon]. The position shown is your current position. Edit the position if necessary. Tap ✓ to enter the point and close the keyboard.

## 4.2.2 How to put an event mark (at own ship position)

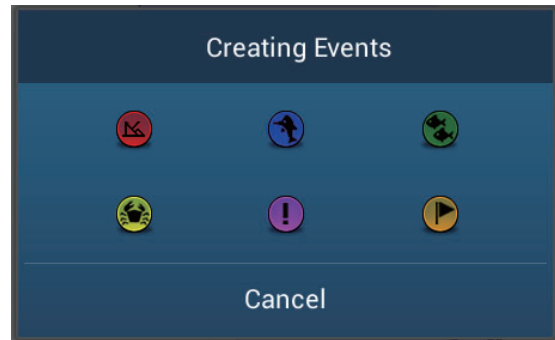
### Method 1: Function gesture

This function is available by touch control when you tap [Event] in [Settings] - [General] - [Function Gesture] (see section 1.15).

1. Tap the screen with two fingers.
2. Tap required event mark.

The following occurs.

- The selected mark is put at the own ship position at the time the mark was selected.
- The event mark is saved to the points list.

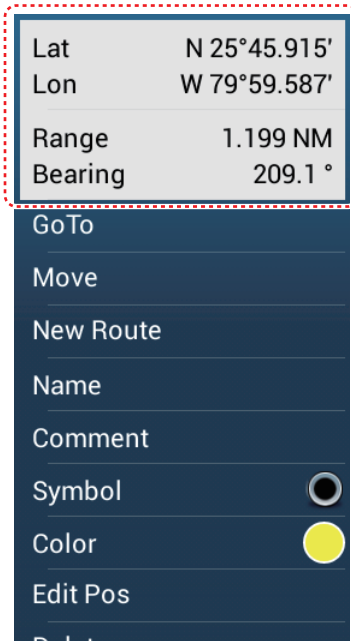


### Method 2: Slide-out menu

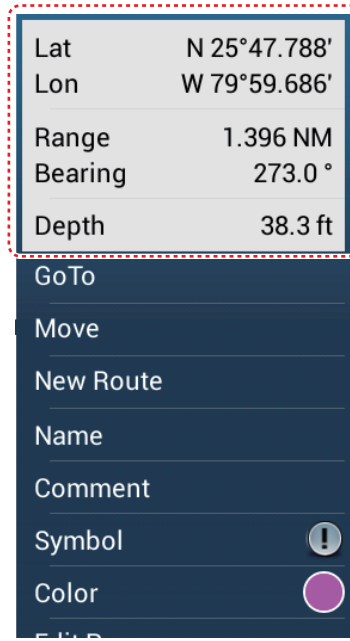
Open the slide-out menu, then tap [Event]. Tap required event mark.

## 4.3 How to Display Point, Event Mark Information

Tap a point or event mark to display its information (latitude, longitude, range, bearing, and depth (event mark only)).



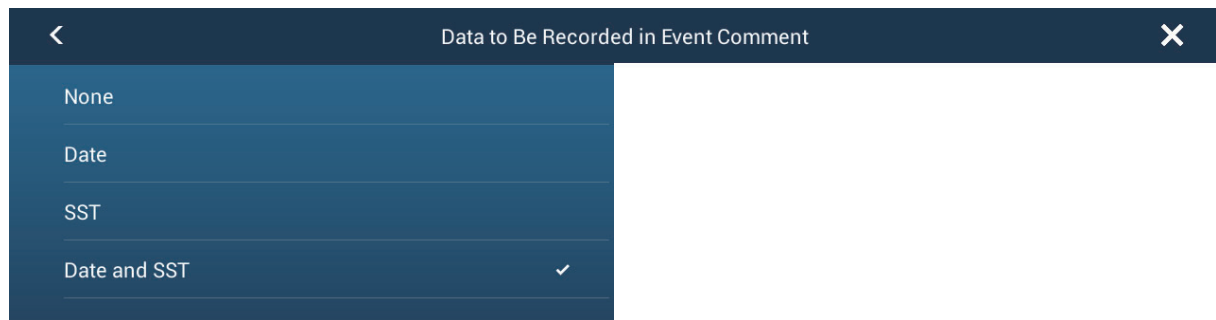
*Point information*



*Event mark information*

For an event mark, the comment is automatically entered according to the setting in the [Points] menu.

1. Open the home screen, then tap [Settings] - [Points].
2. Tap [Data to Be Recorded in Event Comment] .



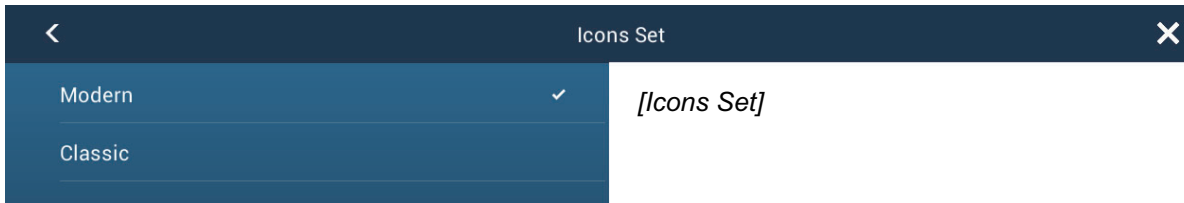
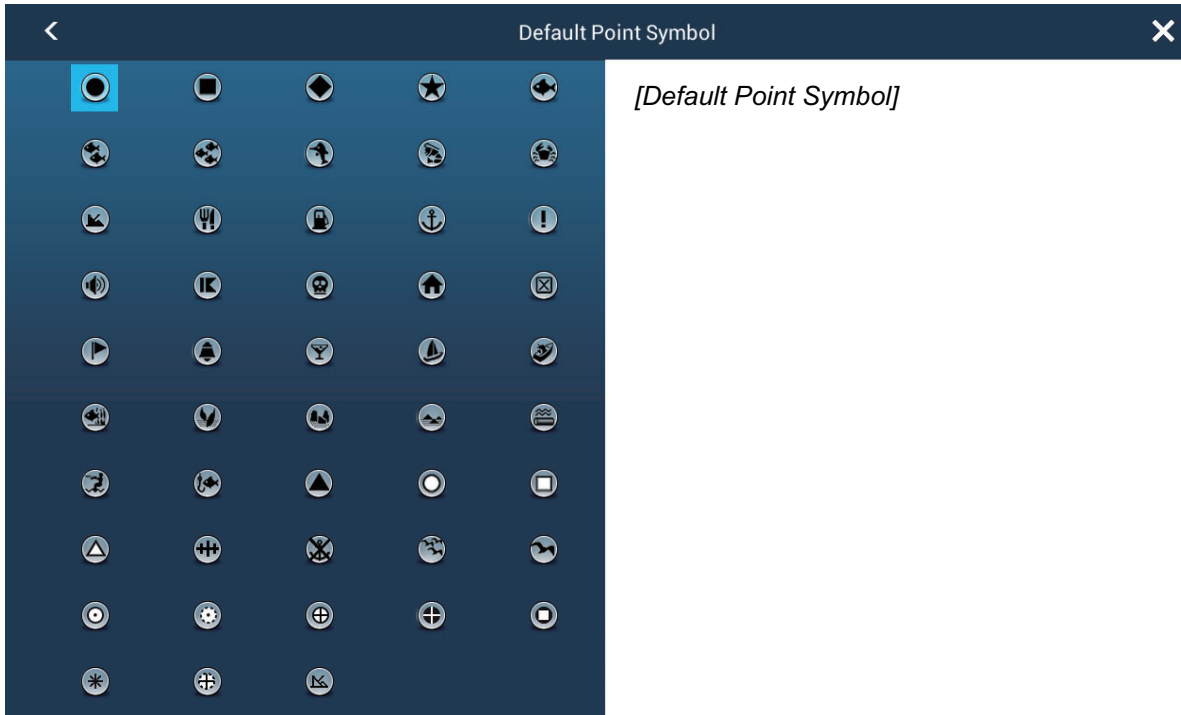
3. Tap an option.  
**[None]**: No comment  
**[Date]**: Date  
**[SST]**: Sea surface temperature  
**[Date And SST]**: Date and sea surface temperature
4. Tap the close button to finish.



## 4.4 Default Point Settings

The equipment saves a point under the shape, color, size and type set on the [Settings] - [Points] menu. If you want to change the default settings for those items do as follows:

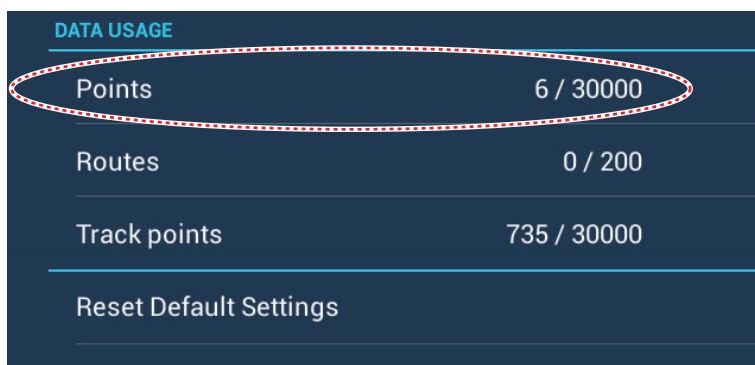
1. Open the home screen, then tap [Settings] - [Points].
2. Tap [Default Point Symbol], [Default Point Color], [Point Size] or [Icons Set]. Below are the options for [Default Point Symbol], [Default Point Color] and [Icons Set].



3. Tap required option.
4. Tap the close button to finish.

## 4.5 How to Find Number of Points Used

Open the home screen, then tap [Settings] - [General]. Find [Points] in the [DATA USAGE] section. In the example below, 6 of 30,000 points have been used.



## 4.6 How to Move a Point

You can move a point by two methods, on the screen and from the points list.

### 4.6.1 How to move a point on the screen

1. Tap the point to move, and the icon shown below is put on the point.
2. Drag and drop the point to its new location.
3. Tap [End Move] at the top right-hand corner of the screen to finish.



### 4.6.2 How to move a point from the points list

1. Open the home screen, then tap [List]
2. Tap [Points] to open the points list.
3. Tap [Name], [Icon], [Color] or [Range] at the top of the list.
  - [Name]:** Points sorted in alphanumeric order
  - [Icon]:** Points sorted by symbol shape order
  - [Color]:** Points sorted by color in order of red, green, blue, cyan, magenta, black & white, yellow, orange
  - [Range]:** Points sorted by range in ascending order
4. Tap the point to move to show the editing window.  
You can also edit the position of a point from the screen. Tap the point then tap [Edit Pos] on the pop-up menu.
5. Tap [Lat Lon] to display the numeric keyboard.
6. Enter the position then tap ✓ to confirm.
7. Tap the close button to finish.

## 4.7 How to Delete a Point

You can delete points by two methods, on the screen and from the points list. The point currently set as a go to point cannot be deleted.

### 4.7.1 How to delete a point on the screen

Tap the point to delete then tap [Delete] on the pop-up menu.

### 4.7.2 How to delete a point from the points list

1. Open the home screen, then tap [List]
2. Tap [Points] to open the points list.
3. Tap [Name], [Icon], [Color] or [Range] at the top of the list.  
**[Name]:** Points sorted in alphanumeric order  
**[Icon]:** Points sorted by symbol shape order  
**[Color]:** Points sorted by color in order of red, green, blue, cyan, magenta, black & white, yellow, orange  
**[Range]:** Points sorted by range in ascending order
4. Tap the point to delete then tap [Delete]. The point disappears from both the screen and the points list.
5. Tap the close button to close the window.

### 4.7.3 How to delete all points

You can delete all points (and routes) collectively. When there is an active route, this function is not available.

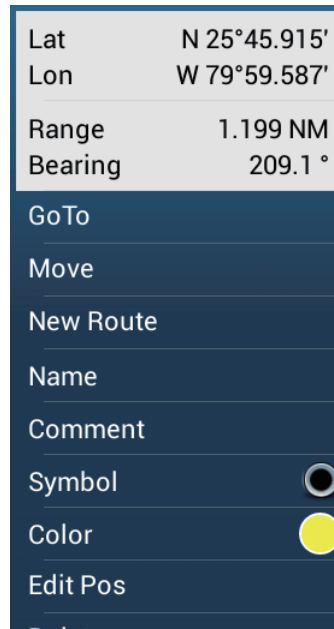
1. Open the home screen, then tap [Settings] - [Points].
2. Tap [Delete All Points & Routes].
3. You are asked if you are sure to delete all points and routes. Tap [OK].
4. Tap the close button to finish.

## 4.8 How to Edit a Point

You can edit the points which you have entered by two methods, on the screen and from the points list.

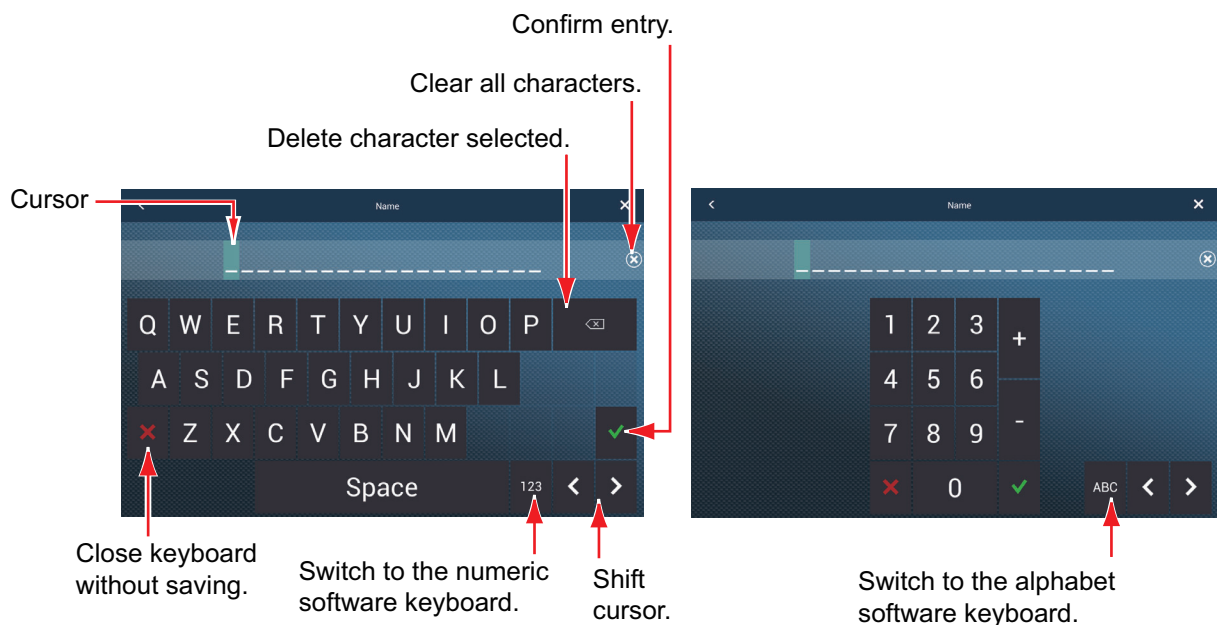
### 4.8.1 How to edit a point on the screen

1. Tap the point to edit to show the pop-up menu.



2. To change the name of the point, tap [Name] to display the software keyboard. Change the name as follows:

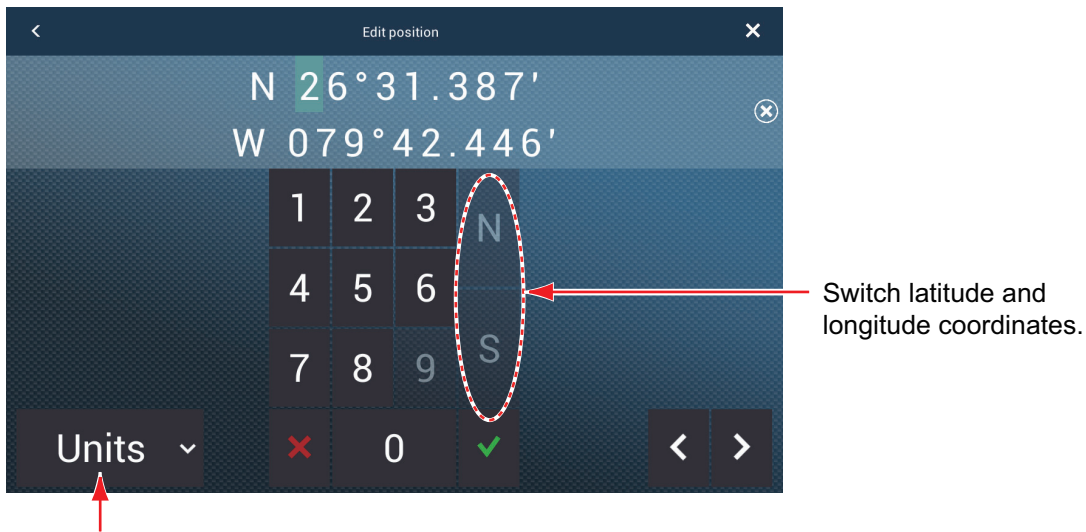
- 1) Tap the character to edit.



- 2) Tap an alphanumeric character on the software keyboard.
- 3) Repeat steps 1) and 2) to complete the name. The maximum length of the name is 20 alphanumeric characters.
- 4) Tap ✓ to confirm.

#### 4. POINTS

- To change the position, tap [Edit Pos] to display the software keyboard. Set the position referring to the instructions in step 2.



- Tap [Color] to change the color of the point symbol.
- Tap [Symbol] to change the point symbol.
- Tap [Comment] to enter a comment, with the software keyboard.
- Tap ✓ to confirm.

#### 4.8.2 How to edit a point from the points list

- Open the home screen, then tap [List].
- Tap [Points] to open the points list.



- Tap [Name], [Icon], [Color] or [Range] at the top of the list.  
**[Name]:** Points sorted in alphanumeric order  
**[Icon]:** Points sorted by symbol shape order  
**[Color]:** Points sorted by color in order of red, green, blue, cyan, magenta, black & white, yellow, orange  
**[Range]:** Points sorted by range in ascending order.

## 4. Tap the point to edit.

< X

EDITION

Lat N 25°48.819'

Lon W 80°03.861'

Name [Keyboard Icon]

Comment [Keyboard Icon]

Color [Yellow Circle] >

Symbol [Black Circle] >

ACTIONS

Add to Route

Goto

Find On Chart

Delete

5. To change the name of the point, tap [Name] to display the software keyboard. Change the name as shown in step 2 in paragraph 4.8.1.
6. To change the position, tap [Lat Lon] to display the software keyboard. Set the position as shown in step 3 in paragraph 4.8.1.
7. Tap [Color] to change the color of the point symbol.
8. Tap [Icon] to change the point symbol.
9. Tap [Comment] to display the software keyboard.
10. Tap ✓ to confirm.
11. Tap the close button to finish.

## 4.9 How to Move a Point to the Screen Center

You can easily move a point to the center of the screen from the points list.

1. Open the home screen, then tap [List].
2. Tap [Points] to open the points list.
3. Tap [Name], [Icon], [Color] or [Range] at the top of the list.
4. Tap the point to find then tap [Find On Chart].  
The menu closes and the selected point is put at the center of the screen on the active plotter display.  
**Note:** When you use this function in the split-screen display, the split-screen display is replaced with the full-screen display.

## 4.10 How to Show or Hide All Points or Points Names

### Points

Open the [Layers] menu, then turn [Points] on or off as required.

### Points Names

Open the home screen, then tap [Settings] - [Points]. Turn [Display Points Names] on or off as required.

## 4.11 How to Go to a Point

Tap the point (including MOB mark) to go to among the three methods shown below.

- Select the point on the screen
- Select a position on the screen
- Select the point from the points list

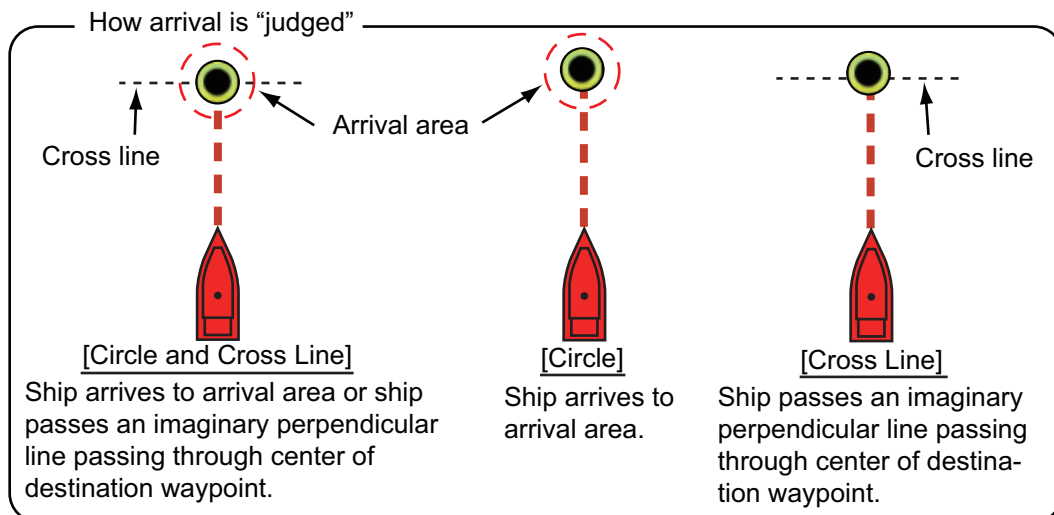
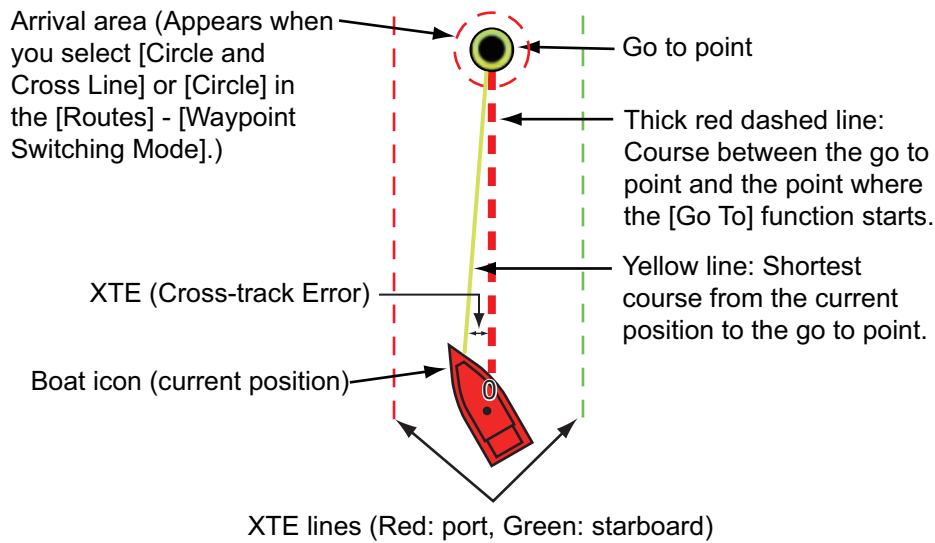
After you have selected a point, you can do the following.

- Restart the cross-track error (XTE) indication.
- Stop and restart Go To. (Tap the boat icon to display the pop-up menu. Tap [Stop Nav] and [Restart Nav] respectively.)

**Note:** Before you try to go to a point, make sure that the path to the point is clear. Make sure to zoom your chart to check for hazards which appear on a smaller scale.

### 4.11.1 How to go to an on-screen point

1. Tap the desired point to show the pop-up menu.
2. Tap [GoTo].



The following occurs:

- The go to point is highlighted.
- A thick red dashed line and a yellow line appear. The thick red dashed line is the course to follow to get to the point. The yellow line is the shortest course from the current position to the go to point.
- The go to point is numbered "1" and the position where the [Go To] function starts is numbered "0".
- The arrival area marker appears if activated on the menu (see paragraph 5.9.5).
- The XTE lines, red for port side, green for starboard side, appear. You can show or hide these lines with [Display XTE Lines] in the [Settings] - [Routes] menu.
- The route is saved to the routes list.

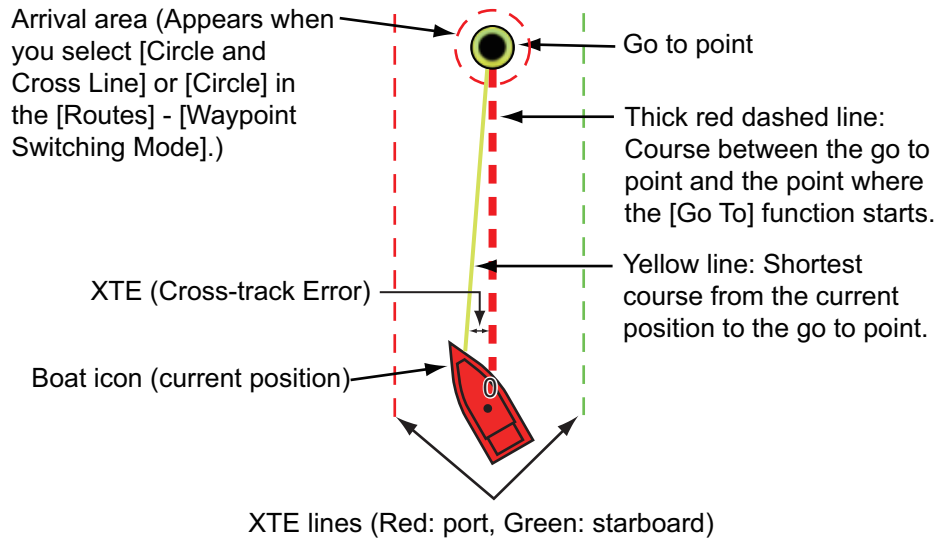
**Note:** If you want to be notified when you reach the go to point (the end of a route), turn on [End of Route Notification] in the [Routes] menu (see paragraph 5.9.9). The message "End of Route" appears when you reach the end of a route. For the arrival timing, see paragraph 5.9.5.



### 4.11.2 How to go to a position selected on screen

You can set a position as a point to go to without saving the point. The point is erased when the navigation is cancelled or the power is turned off.

1. Tap the position to set as the go to point to show the pop-up menu.
2. Tap [GoTo].



The following occurs:

- The go to point is highlighted.
- A thick red dashed line and a yellow line appear. The thick red dashed line is the course to follow to get to the point. The yellow line is the shortest course from the current position to the go to point.
- The go to point is numbered "1" and the position where the [Go To] function starts is numbered "0".
- The arrival area marker appears if activated on the menu (see paragraph 5.9.5).
- The XTE lines, red for port side, green for starboard side, appear. You can show or hide these lines with [Display XTE Lines] in the [Settings] - [Routes] menu.

**Note:** If you want to be notified when you reach the go to point (the end of a route), turn on [End of Route Notification] in the [Routes] menu (see paragraph 5.9.9). Then the message "End of Route" appears when you reach the end of a route. For the arrival timing, see paragraph 5.9.5.

### 4.11.3 How to go to a point selected from the points list

1. Open the home screen, then tap [List].
2. Tap [Points] to open the points list.
3. Tap [Name], [Icon], [Color] or [Range] at the top of the list.
4. Tap the point to go to then tap [Goto].
5. Tap the close button to close the points list.

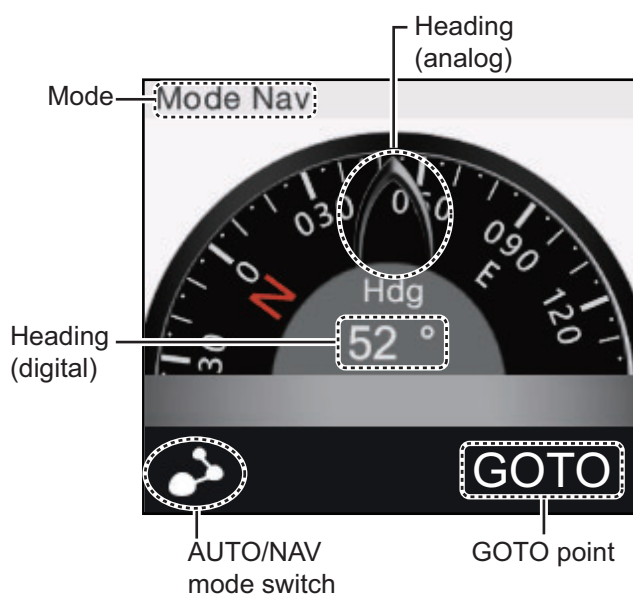
The following occurs:

- The go to point is highlighted.
- A thick red dashed line and a yellow line appear. The thick red dashed line is the course to follow to get to the point. The yellow line is the shortest course from the current position to the go to point.
- The go to point is numbered "1" and the position where the [Go To] function starts is numbered "0".
- The arrival area marker appears if activated on the menu (see paragraph 5.9.5).
- The XTE lines, red for port side, green for starboard side, appear. You can show or hide these lines with [Display XTE Lines] in the [Settings] - [Routes] menu.

**Note:** If you want to be notified when you reach the go to point (the end of a route), turn on [End of Route Notification] in the [Routes] menu (see paragraph 5.9.9). Then the message "End of Route" appears when you reach the end of a route. For the arrival timing, see paragraph 5.9.5.

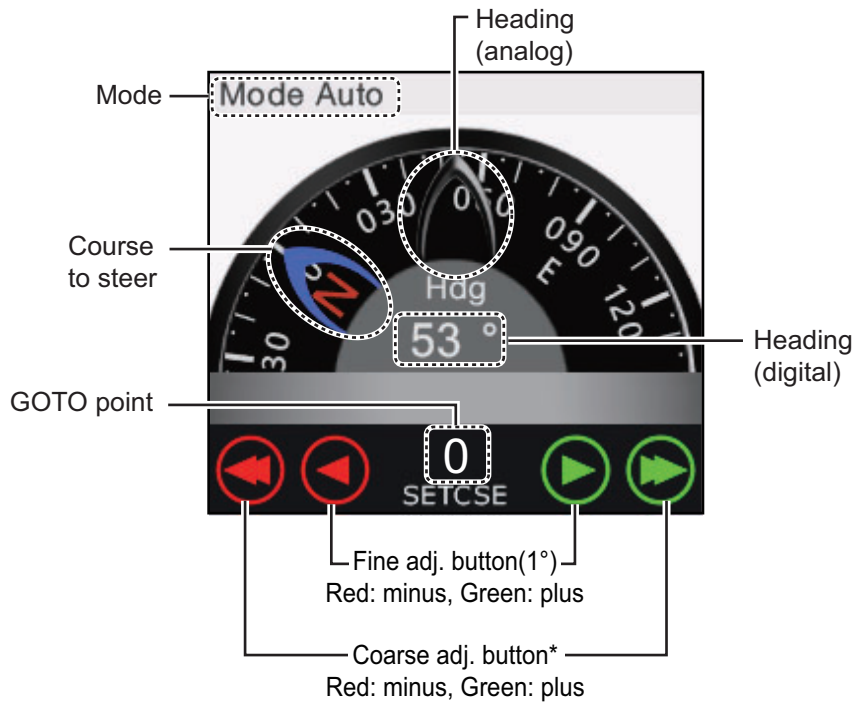
### 4.11.4 How to use the NAVpilot to steer to a point

When you select a point to follow and the NAVpilot is engaged and activated in the system, the message "DO YOU WANT TO NAVIGATE USING THE NAVPILOT?" appears. Tap [OK] to have the NAVpilot steer the vessel, then the NAVpilot automatically goes into the Nav mode. The illustration below shows the NAVpilot control box in the [Nav] mode.



#### 4. POINTS

To switch to the [Auto] mode, tap the AUTO/NAV mode switch then tap [Auto].



\* Selectable between 2° and 30° with [Autopilot Step] in the [Routes] menu.

Use the course adjustment buttons to set the course to steer. Tap the double arrow for coarse adjustment, and single arrow for adjustment in 1° steps. The course to steer indicator moves with adjustment.

To go to the standby mode, tap the NAVpilot control box. The mode indicator then shows [Stby].

#### 4.11.5 How to display the point information for the active goto point (route)

1. Tap a line on the route to show the pop-up menu.
2. Tap [Detail] to show the [Route Detail] window.

Route Detail							
ID	CTS	SPEED	DISTANCE	TOTAL	TTG	TOTAL	
Start	0.0°	6.0 kn	0 yd	0 yd	0'00s	0'00s	>
Goto	12.5°	6.0 kn	1.266 NM	1.266 NM	12'39s	12'39s	>

3. Tap the close button to close the window.

##### Description of Route Detail window

**Colored vertical bars:** The bars at the left edge of the screen are colored according to the status of the waypoints in the route.

Gray: Passed waypoint

Yellow: Waypoint that your ship is currently heading toward

Red: Subsequent waypoint