

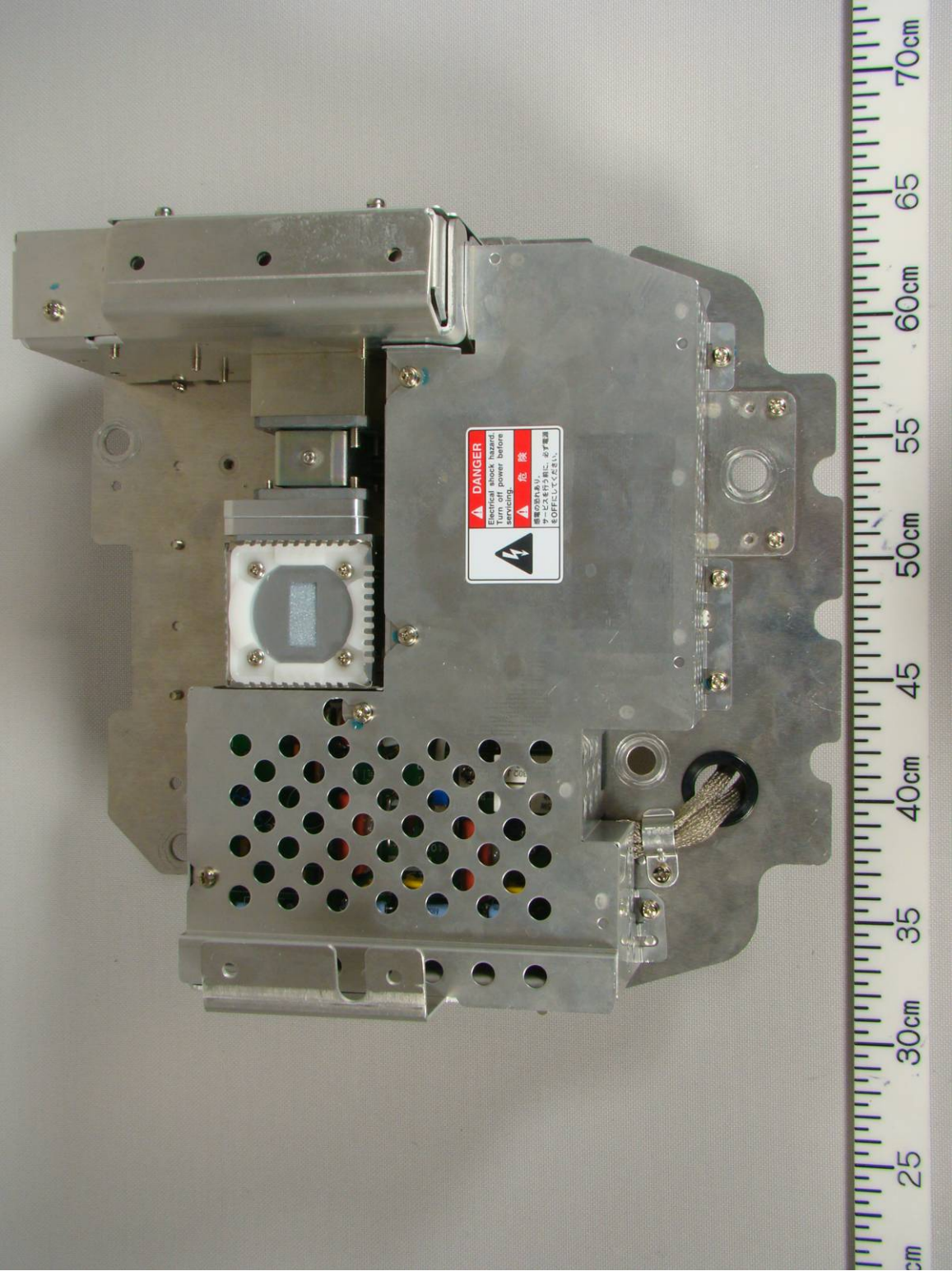
Photographs of Furuno Radar Sensor DRS12A with Transceiver RTR-094A

1 Internal View

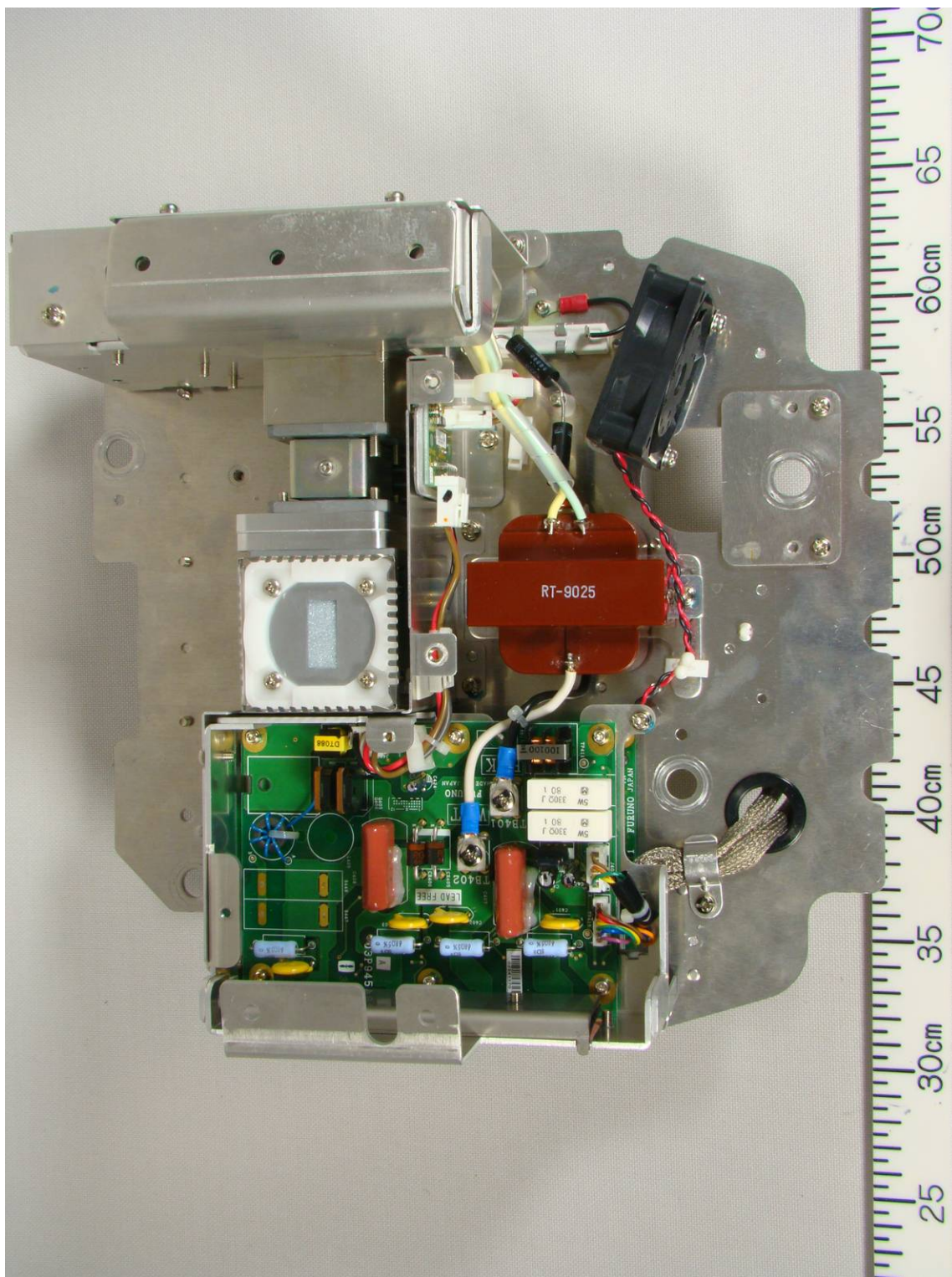
1.1 Inside View (with Top cover opened, showing Scanner Motor (upper) and Transceiver RTR-094A (lower))



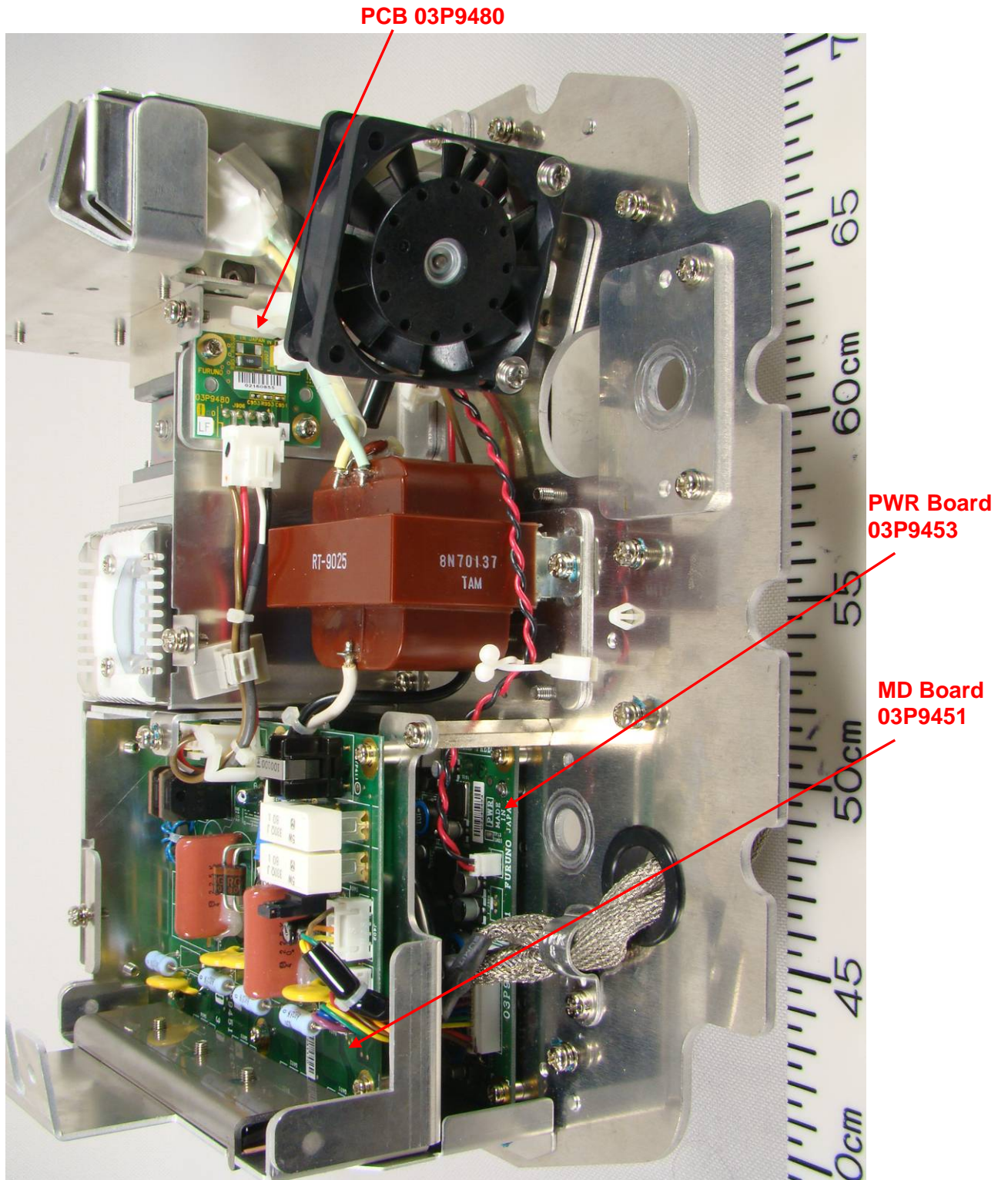
1.2 Transceiver Top View



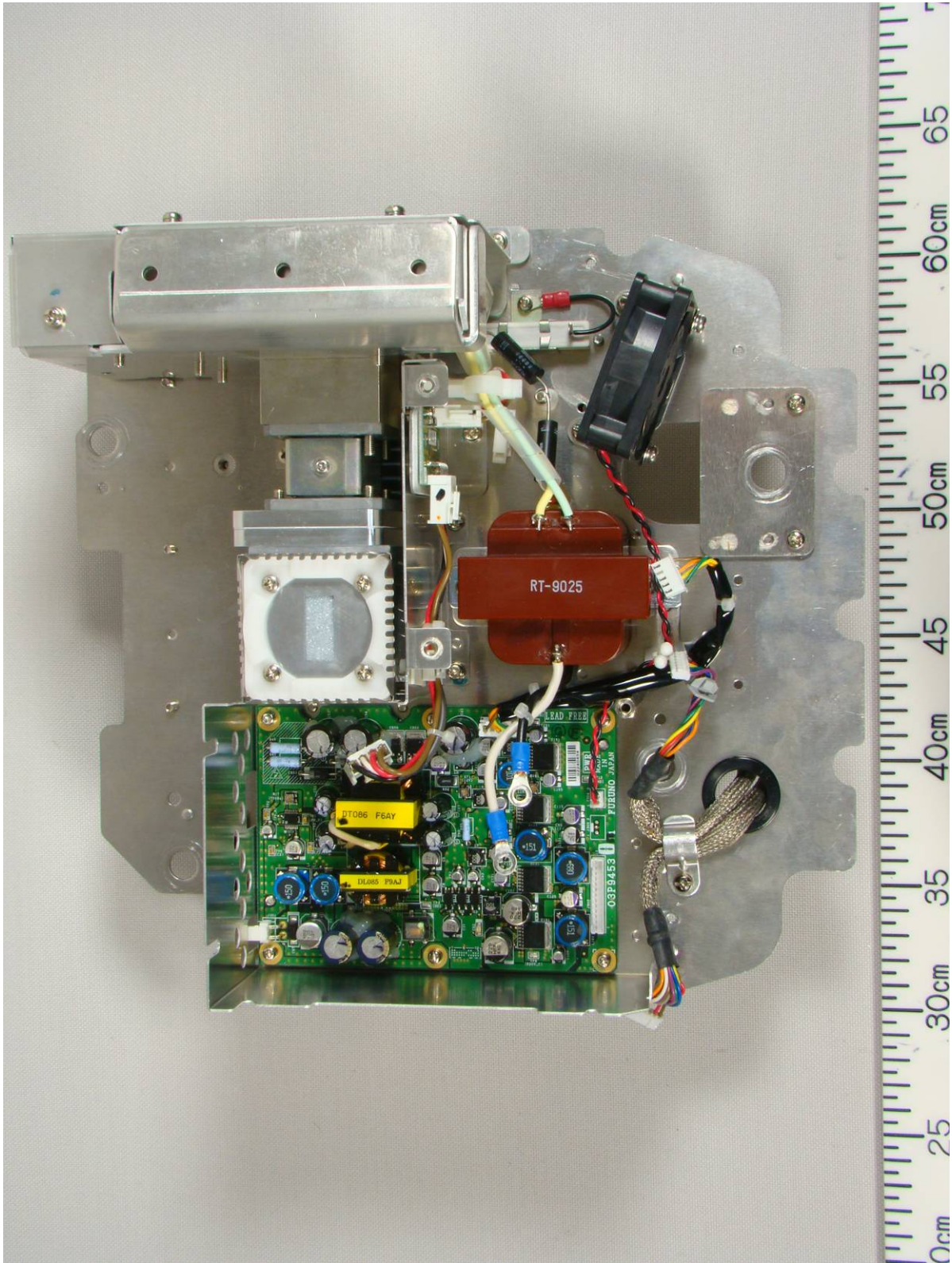
1.3 Transceiver Top View (with Shield-cover removed, showing MD Board 03P9451 (lower))



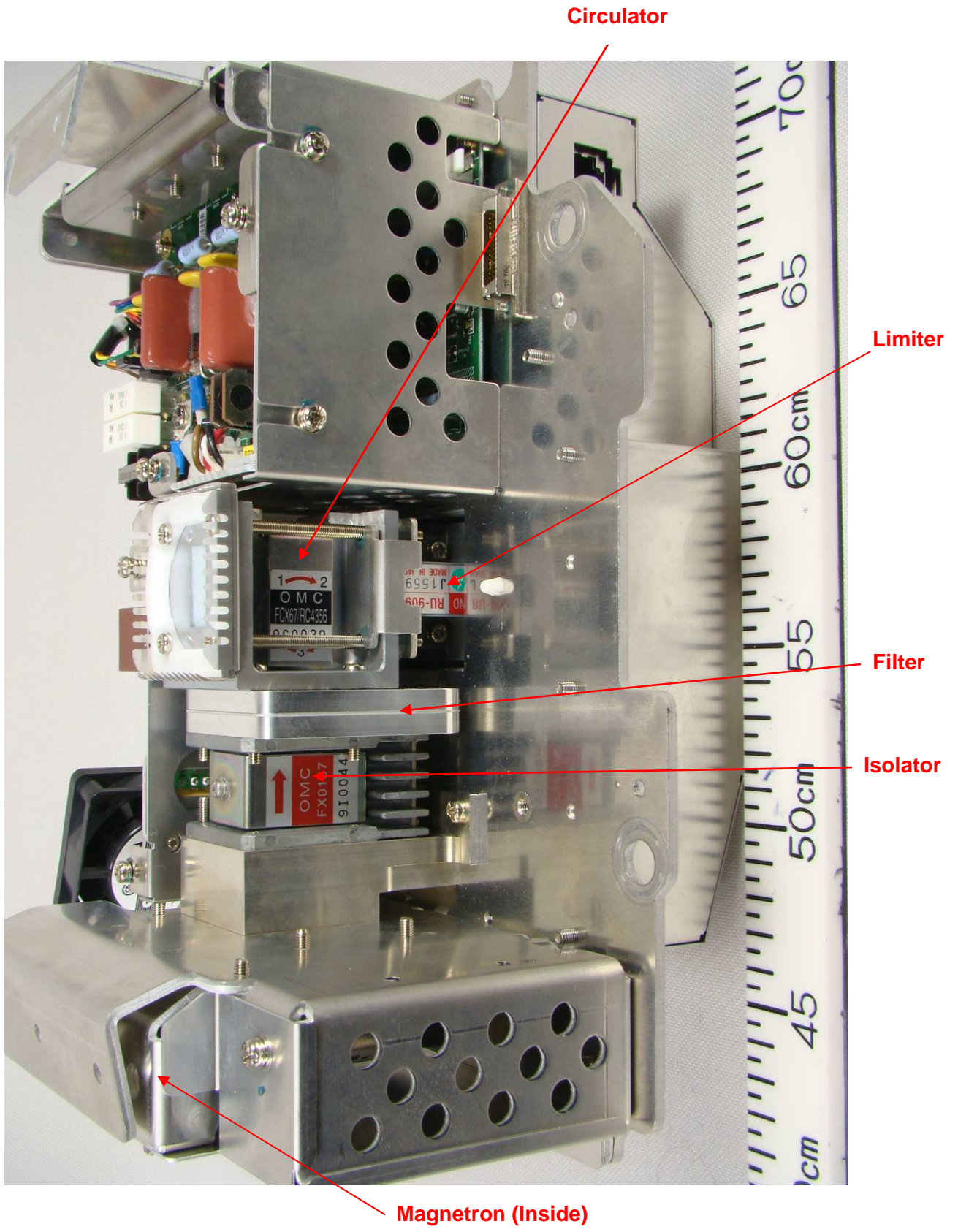
1.4 Transceiver Front View (with Shield-cover removed, showing PCB 03P9480, MD Board 03P9451 and PWR Board 03P9453)



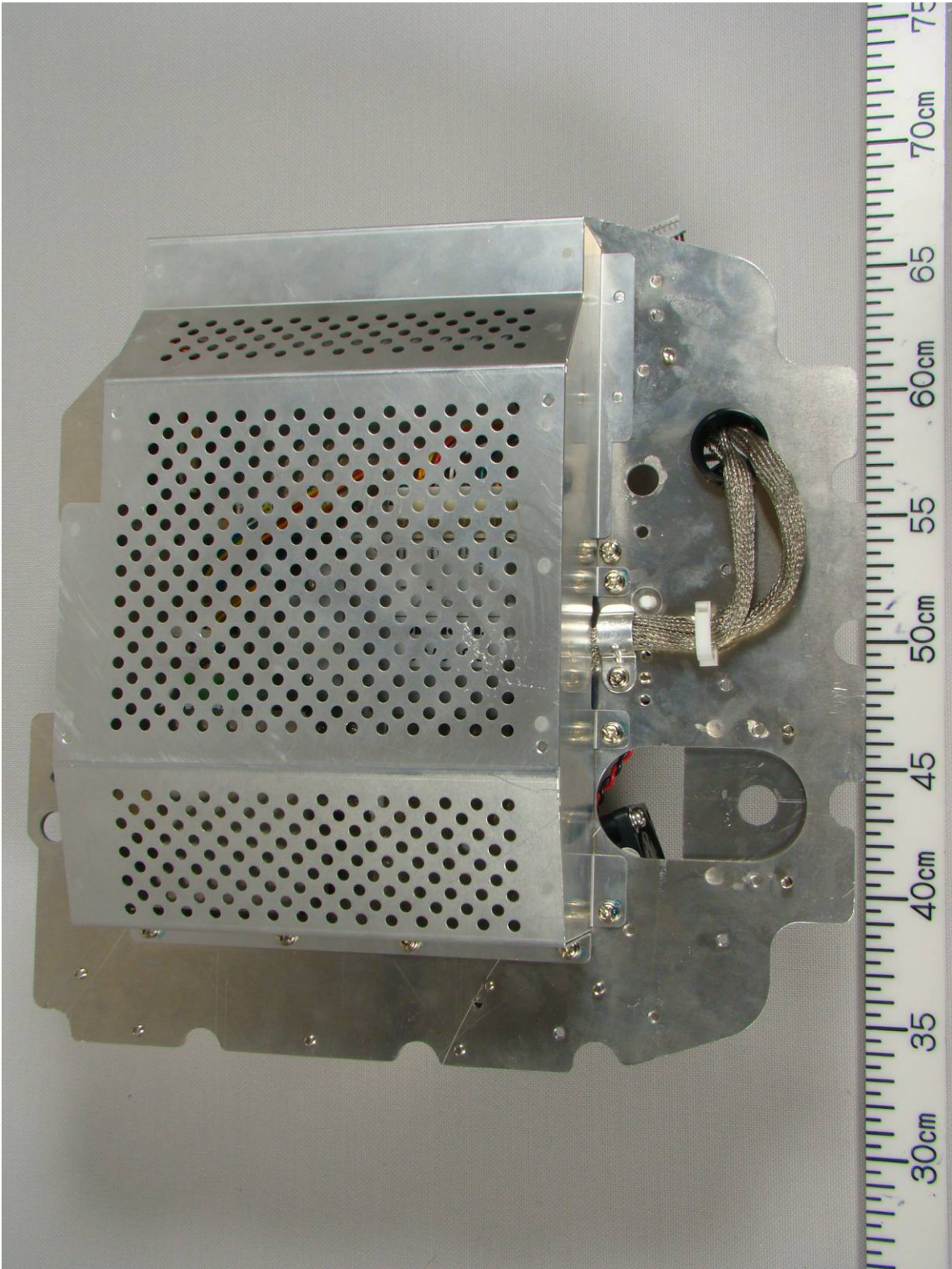
1.4 Transceiver Top View (with MD Board 03P9451 removed, showing PWR Board 03P9453 (lower))



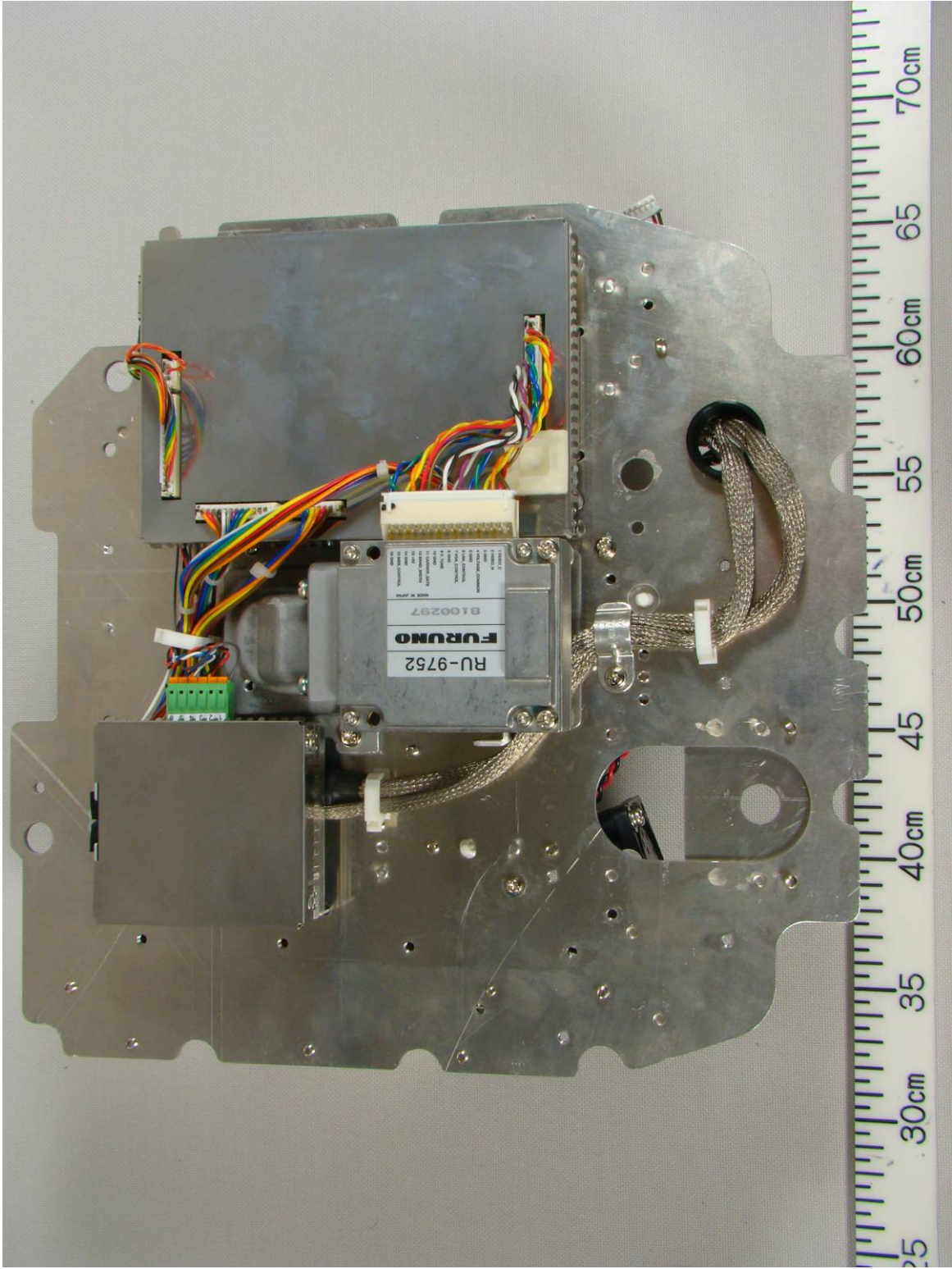
1.5 Transceiver Rear side View



1.6 Transceiver Bottom View



1.7 Transceiver Bottom View (with Shield-cover removed)



1.8 Transceiver Bottom View (with shield-covers removed, showing SPU Board 03P9455 (upper) and NMEA2000 Board 03P9462 (lower))

