

Attachment E Photographs of EUT FAR-2837SW

1 Transceiver unit RTR-082

1.1 Front View (Showing Name Plate and Warning Label on Top cover)



Note: Photographs for the units Processor RPU-013 and Control RCU-014 have been already reported. (See Technical Information FLI 12-03-027 for the Radar FAR-2127 (Transceiver type: RTR-079))

1.2 Inside View (with Top cover removed, showing Magnetron (upper left), IF AMP Board (upper right, with shield-cover) and TB Board 03P9349 (center right))



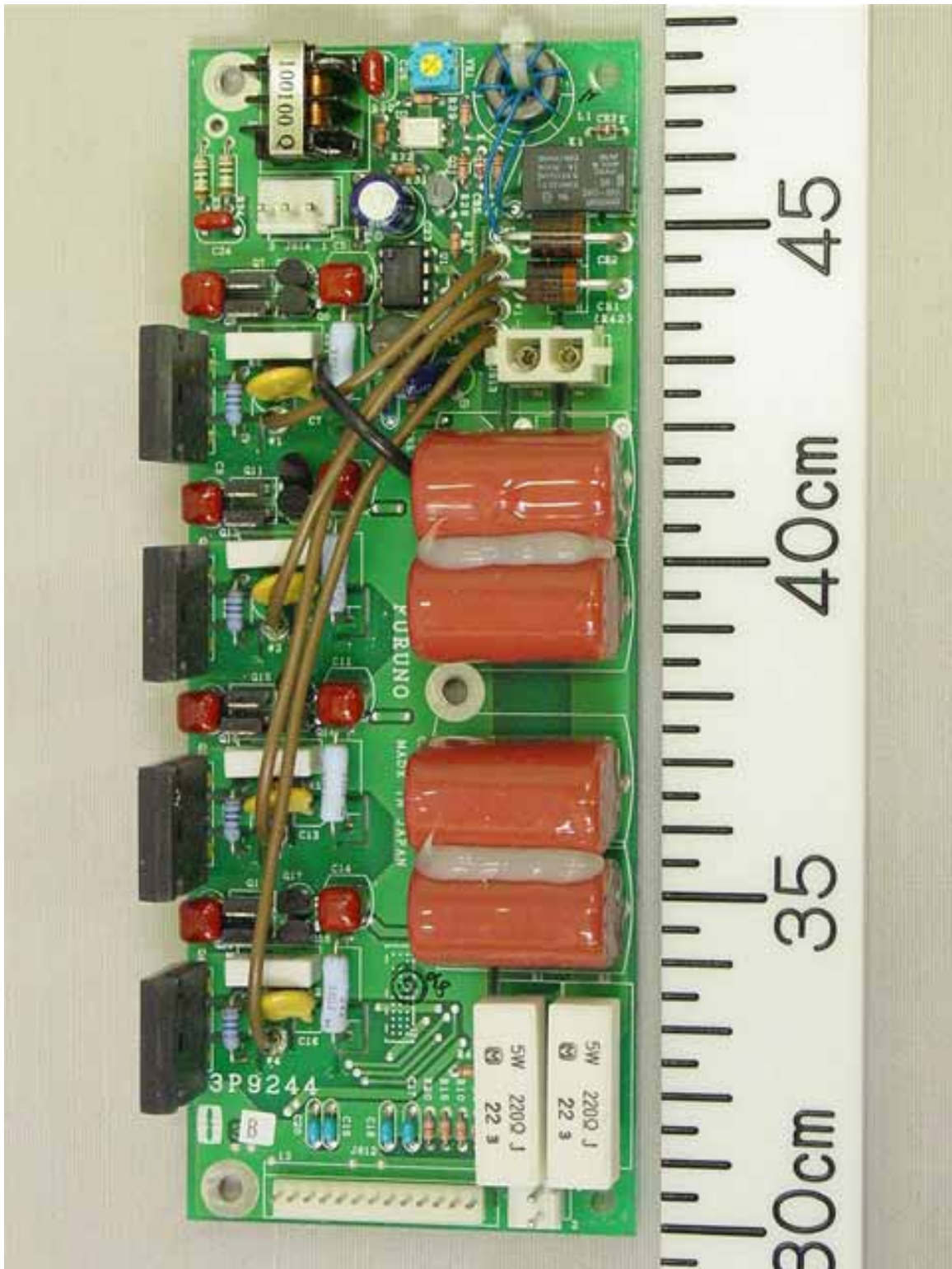
1.3 Inside View (with IF Board and TB Board removed)



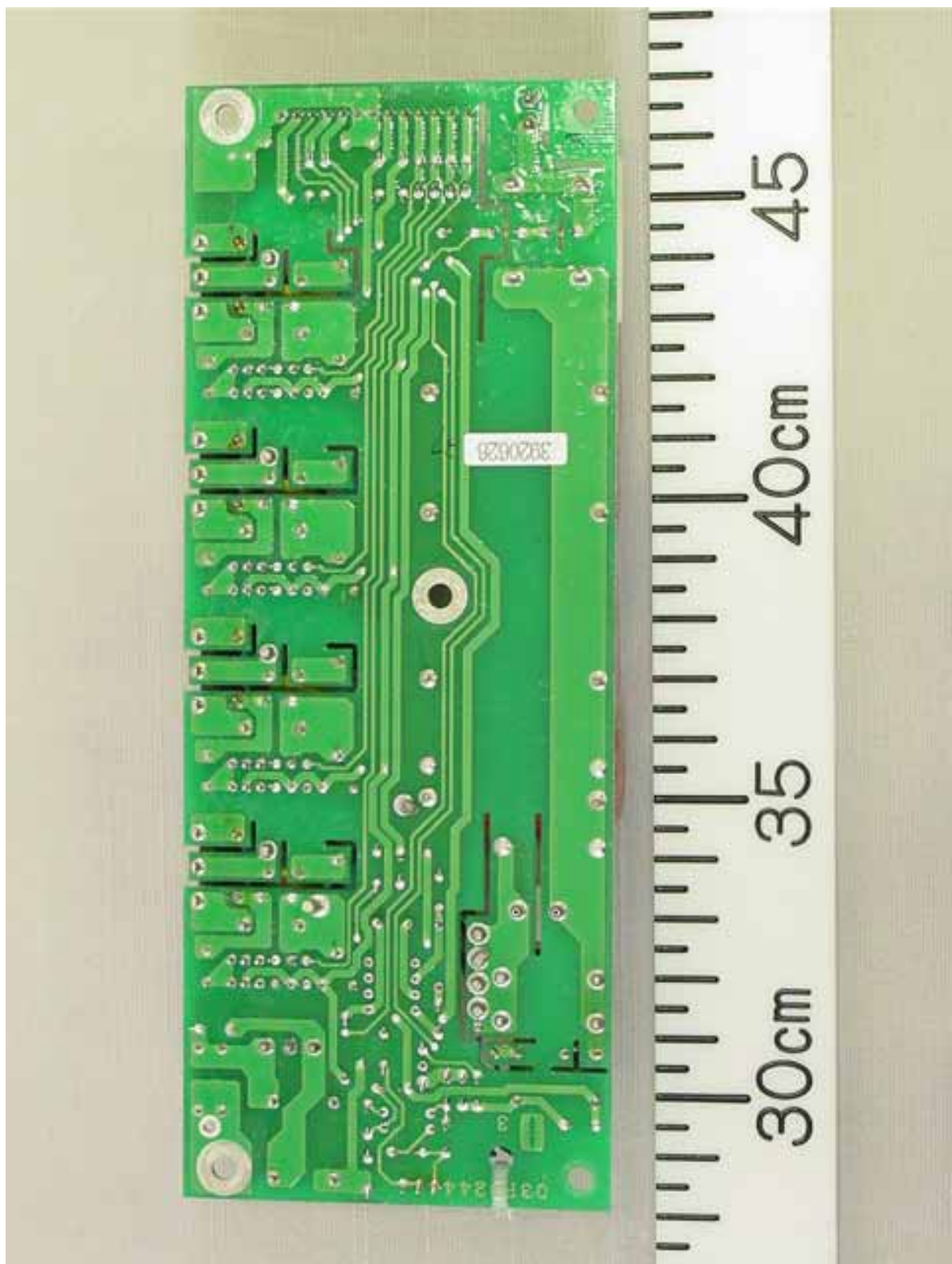
1.4 Inside View (with shield-cover and Magnetron removed, showing MD Board 03P9244 (center) PWR Board 03P9348 (lower left) and RFC Board 03P9346 (lower right))



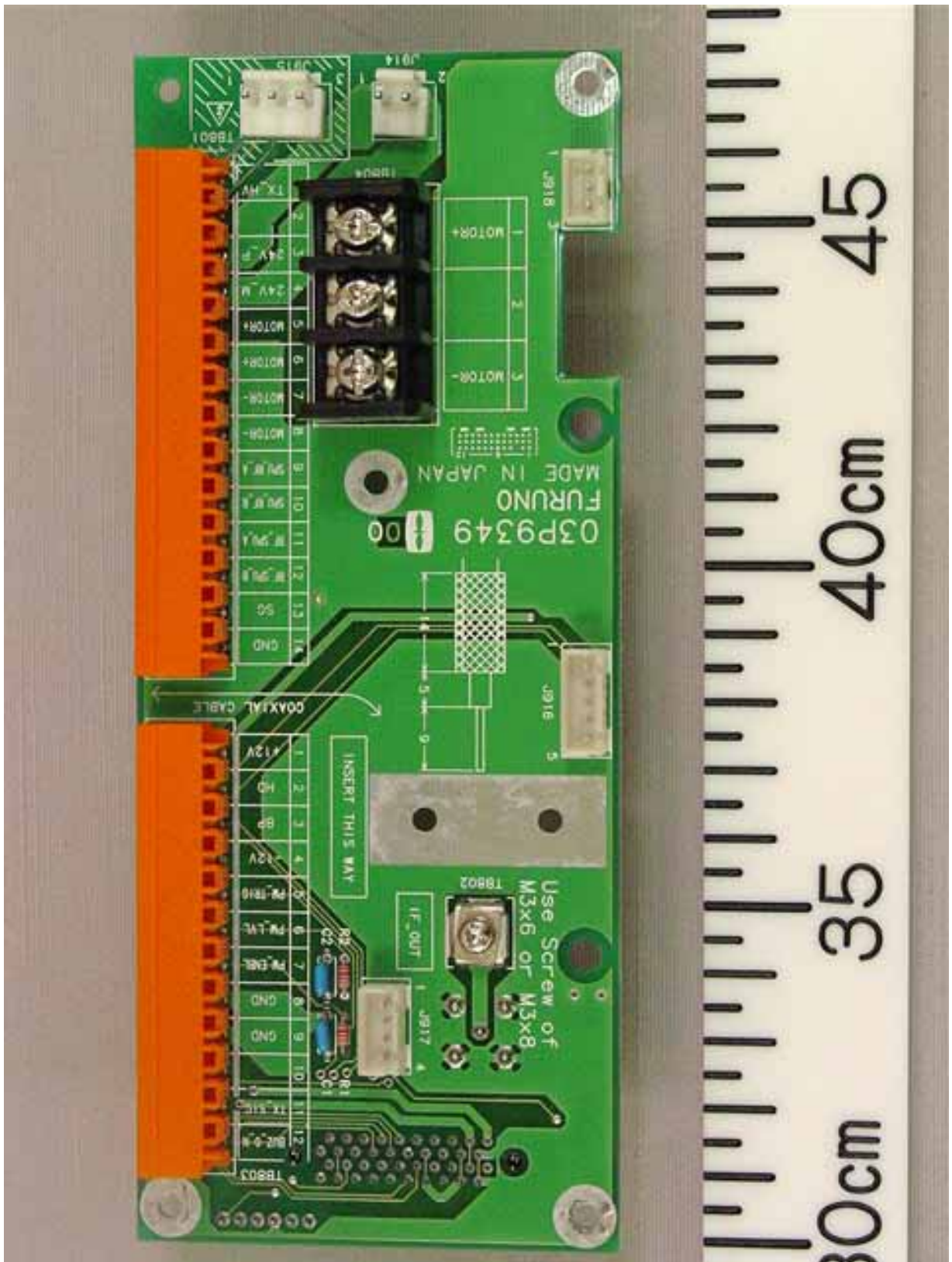
1.5 MD Board 03P9244 Front side



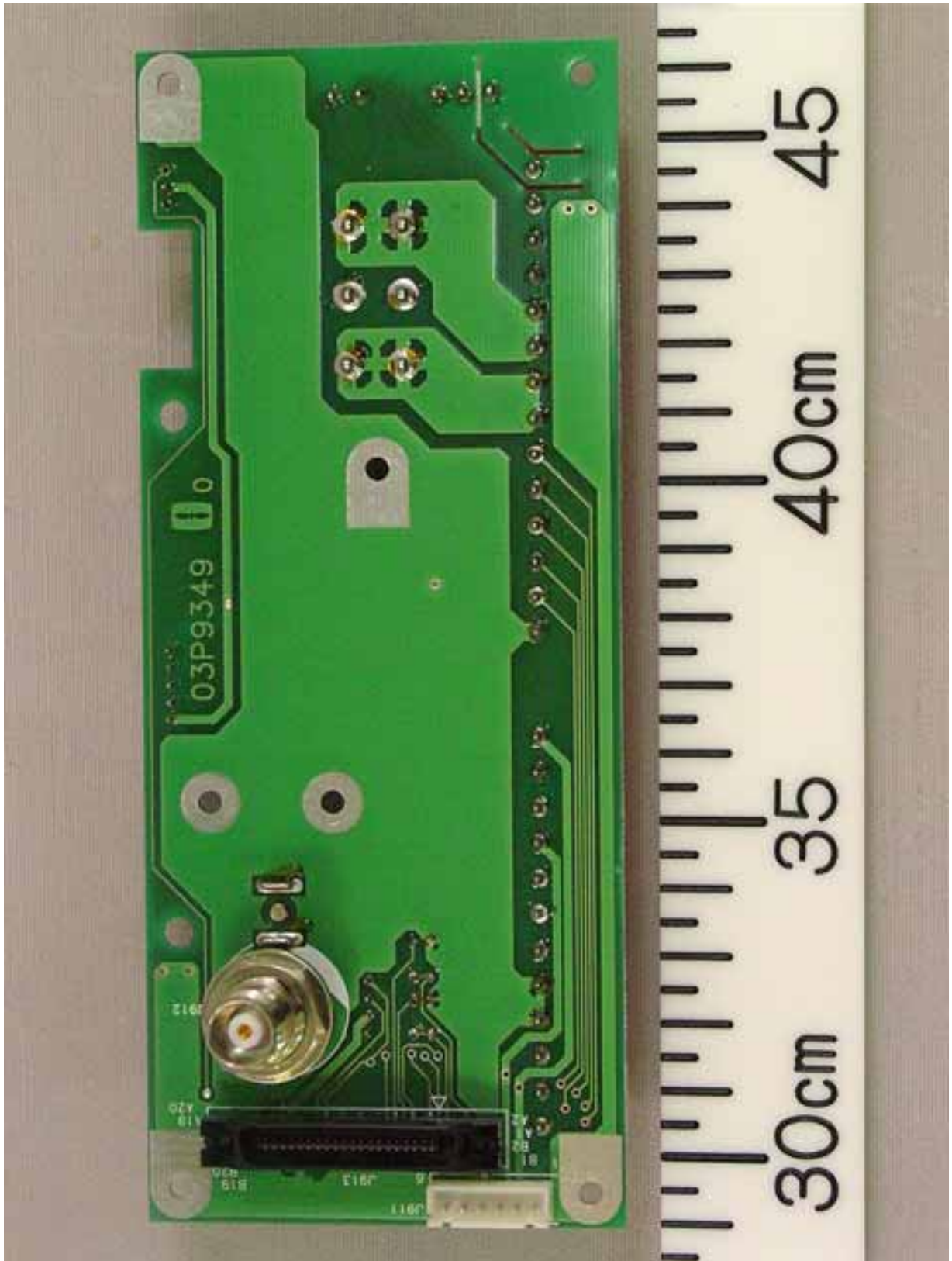
1.6 MD Board 03P9244 Rear side



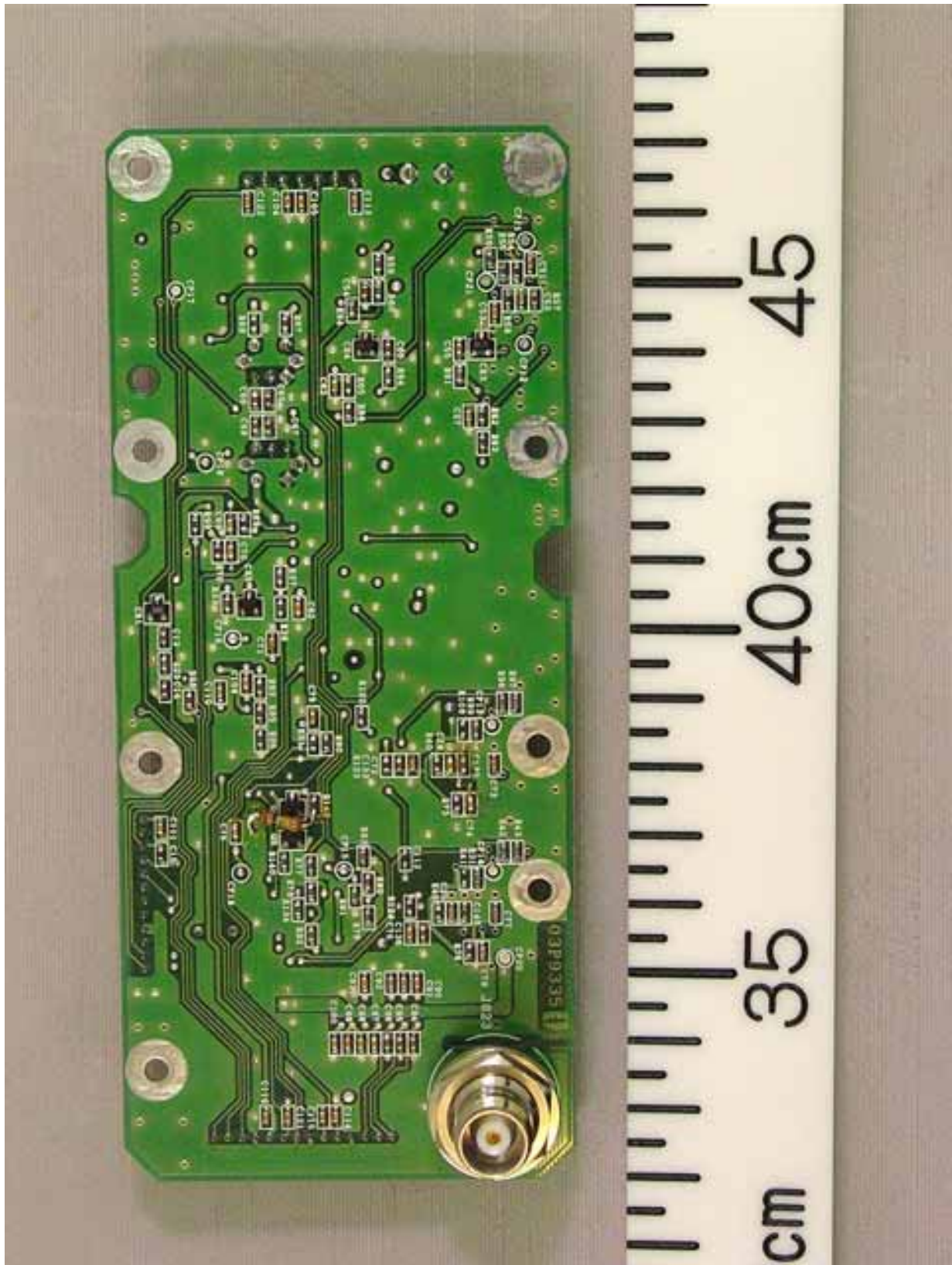
1.7 TB Board 03P9349 Front side



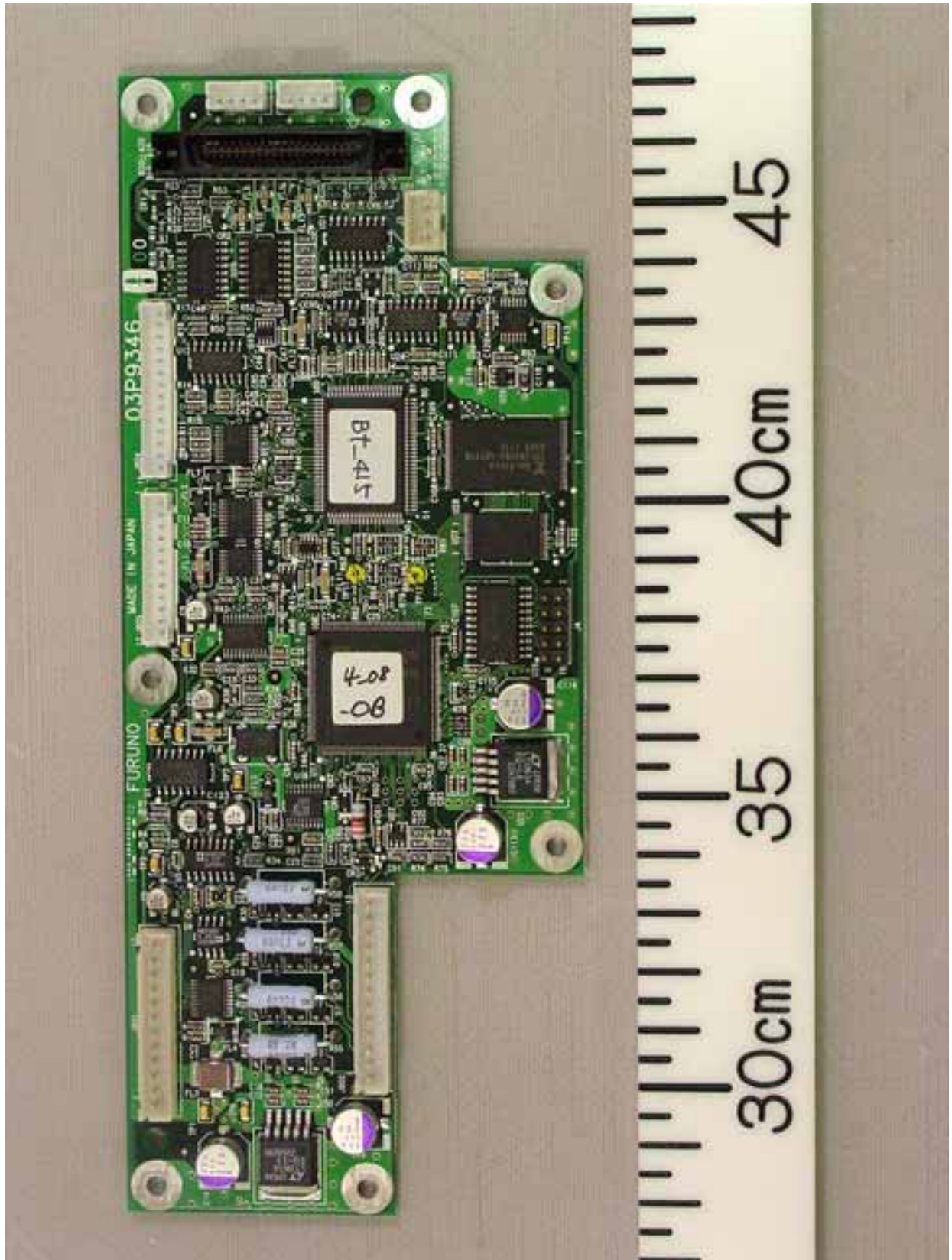
1.8 TB Board 03P9349 Rear side



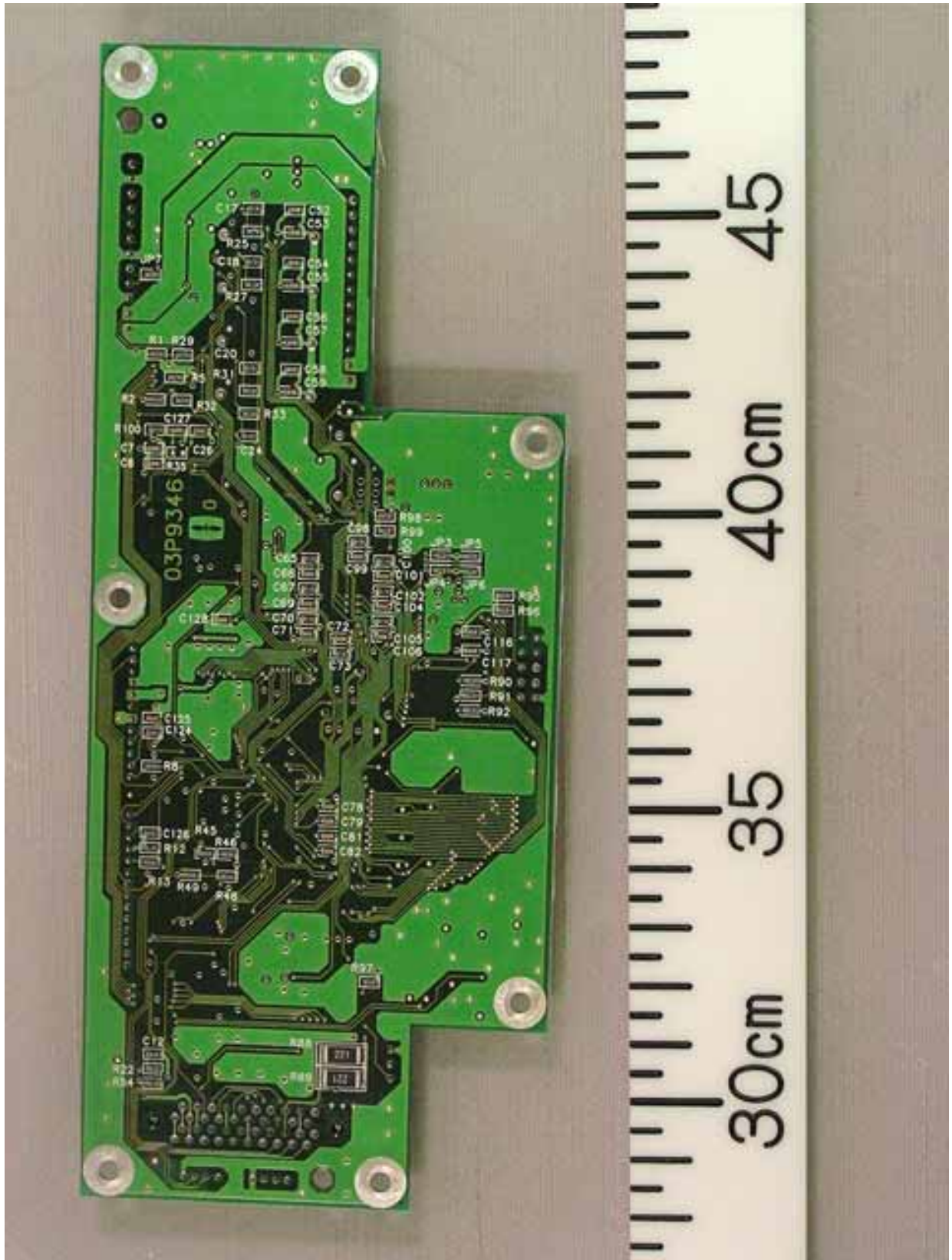
1.10 IF AMP Board 03P9335 Rear side



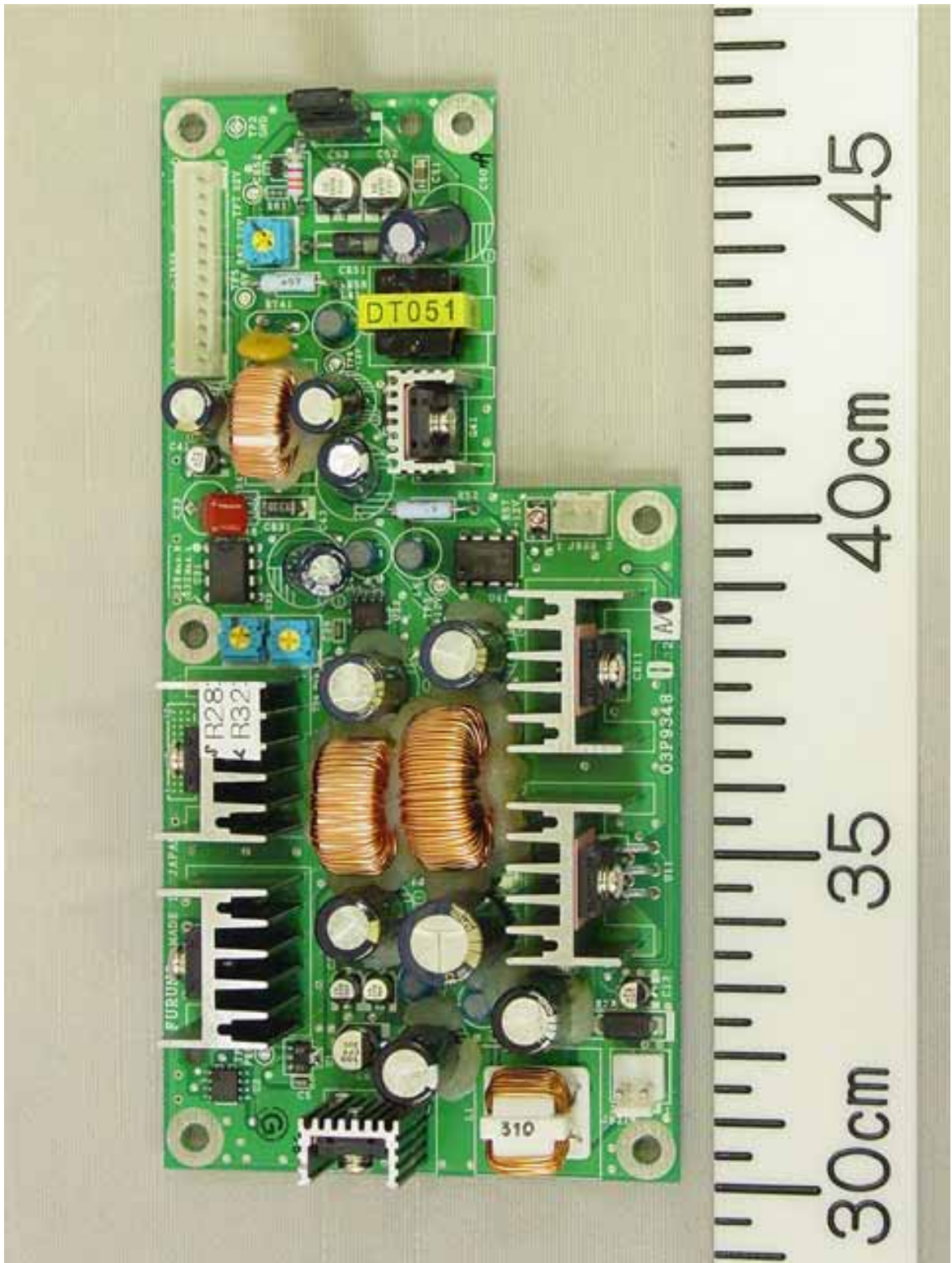
1.11 RFC Board 03P9346 Front side



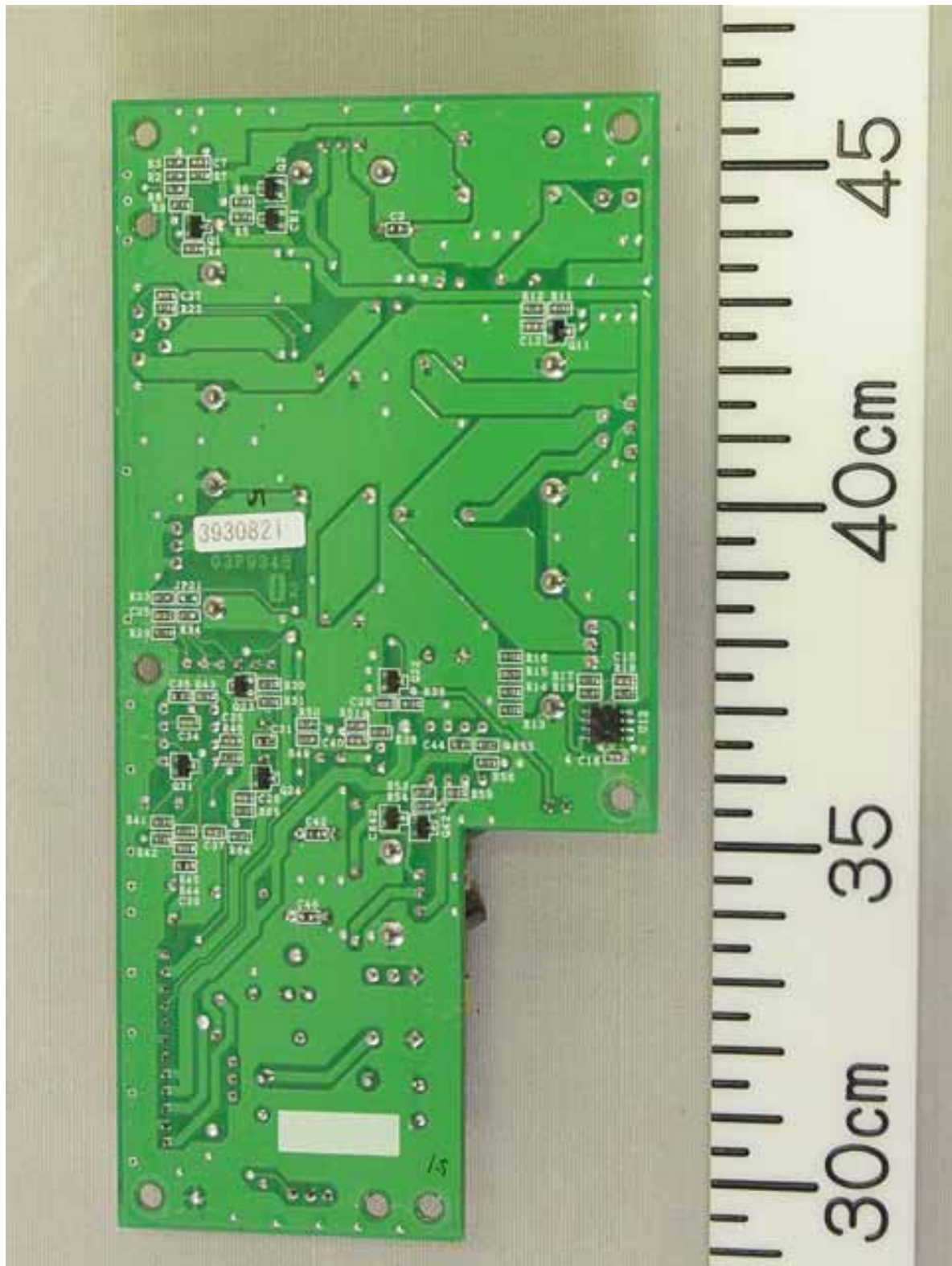
1.12 RFC Board 03P9346 Rear side



1.13 PWR Board 03P9348 Front side



1.14 PWR Board 03P9348 Rear side



1.15 Name Plate and Warning Label



2 Antenna (Scanner) unit RSB-104

2.1 Outside View (showing Radiator SN-36AF and Antenna Scanner)



2.2 Outside View



2.3 Inside Right View (with Antenna right side cover removed, showing MSS Board MSS-7497 (lower))



2.4 Inside Right View (with MSS Board cover removed, showing Antenna Motor (lower))



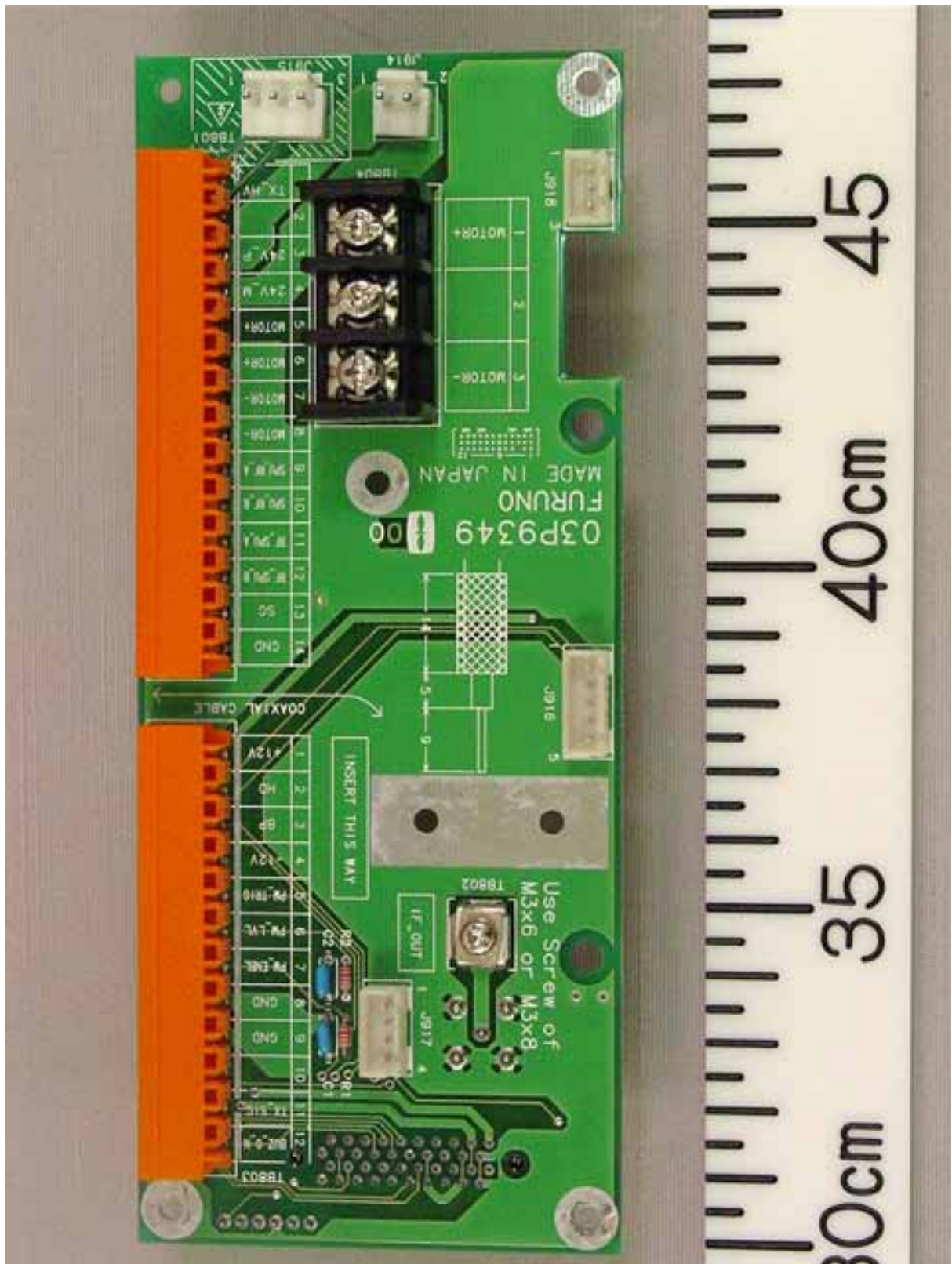
2.5 Inside Left View (with Antenna left side cover removed, showing Antenna Motor (upper), TB Board 03P9349 (center), and Performance Monitor PM-51 (lower left)).



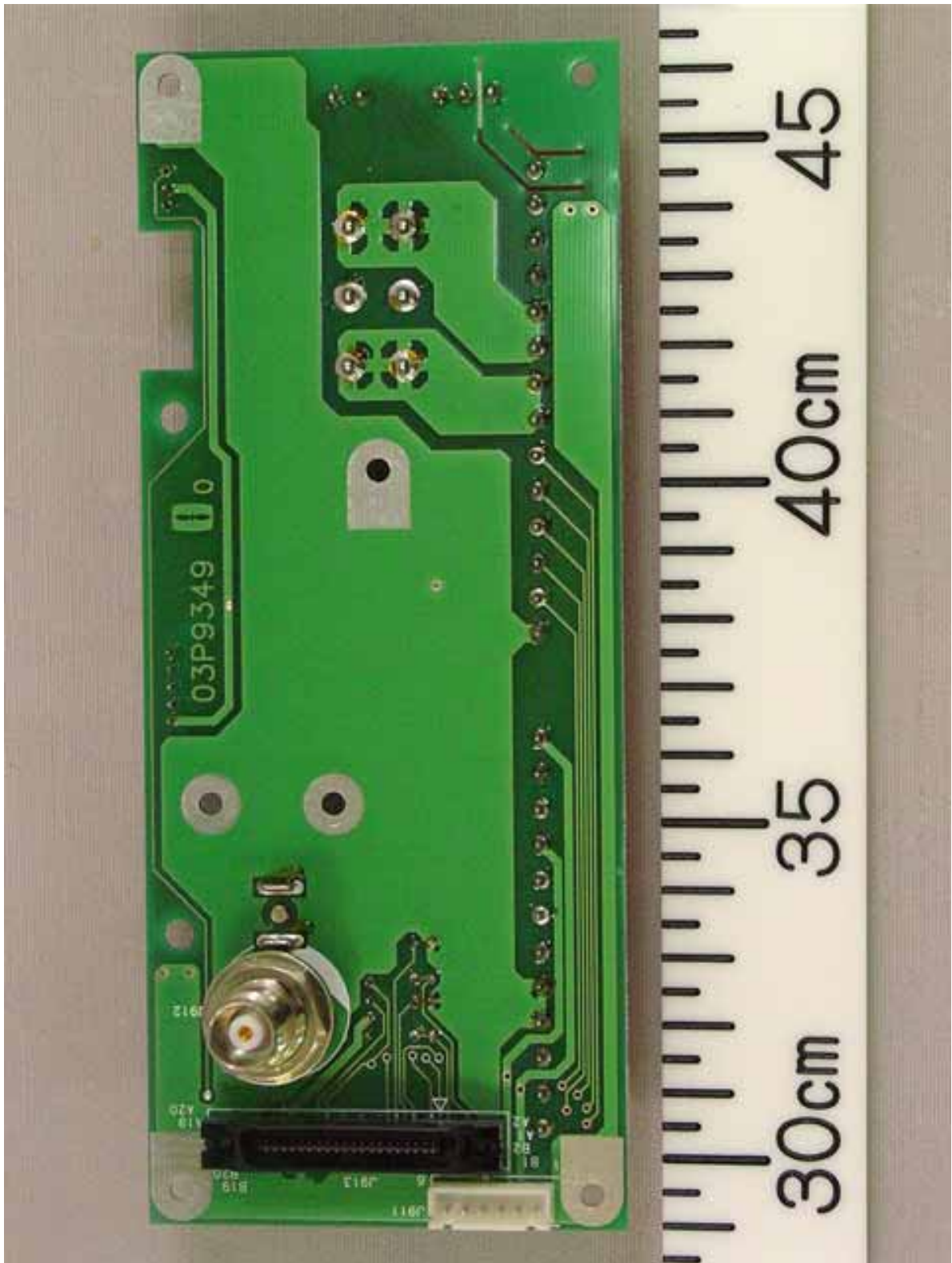
2.6 Inside Left View (with TB Board removed)



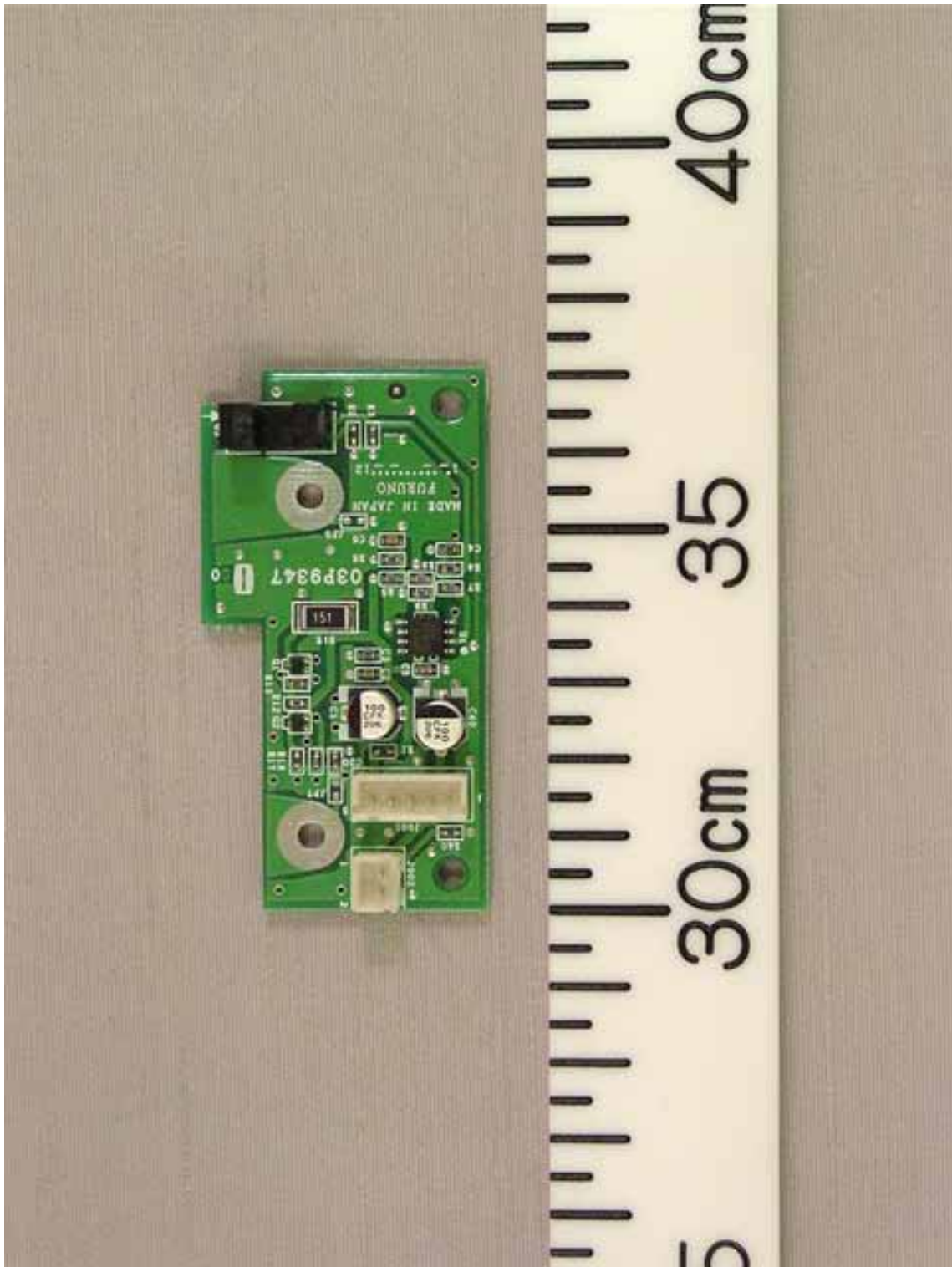
2.7 TB Board 03P9349 Front side



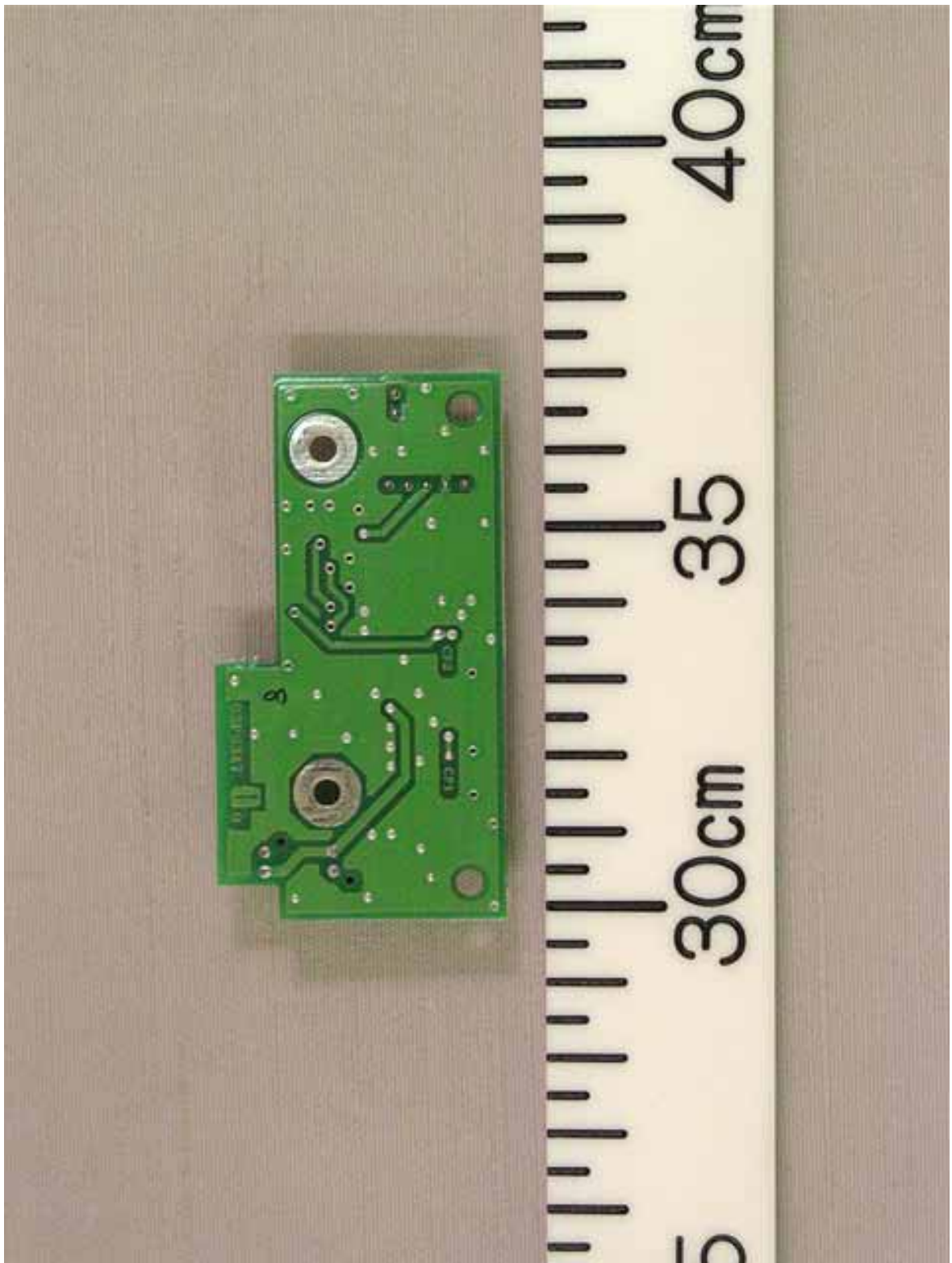
2.8 TB Board 03P9349 Rear side



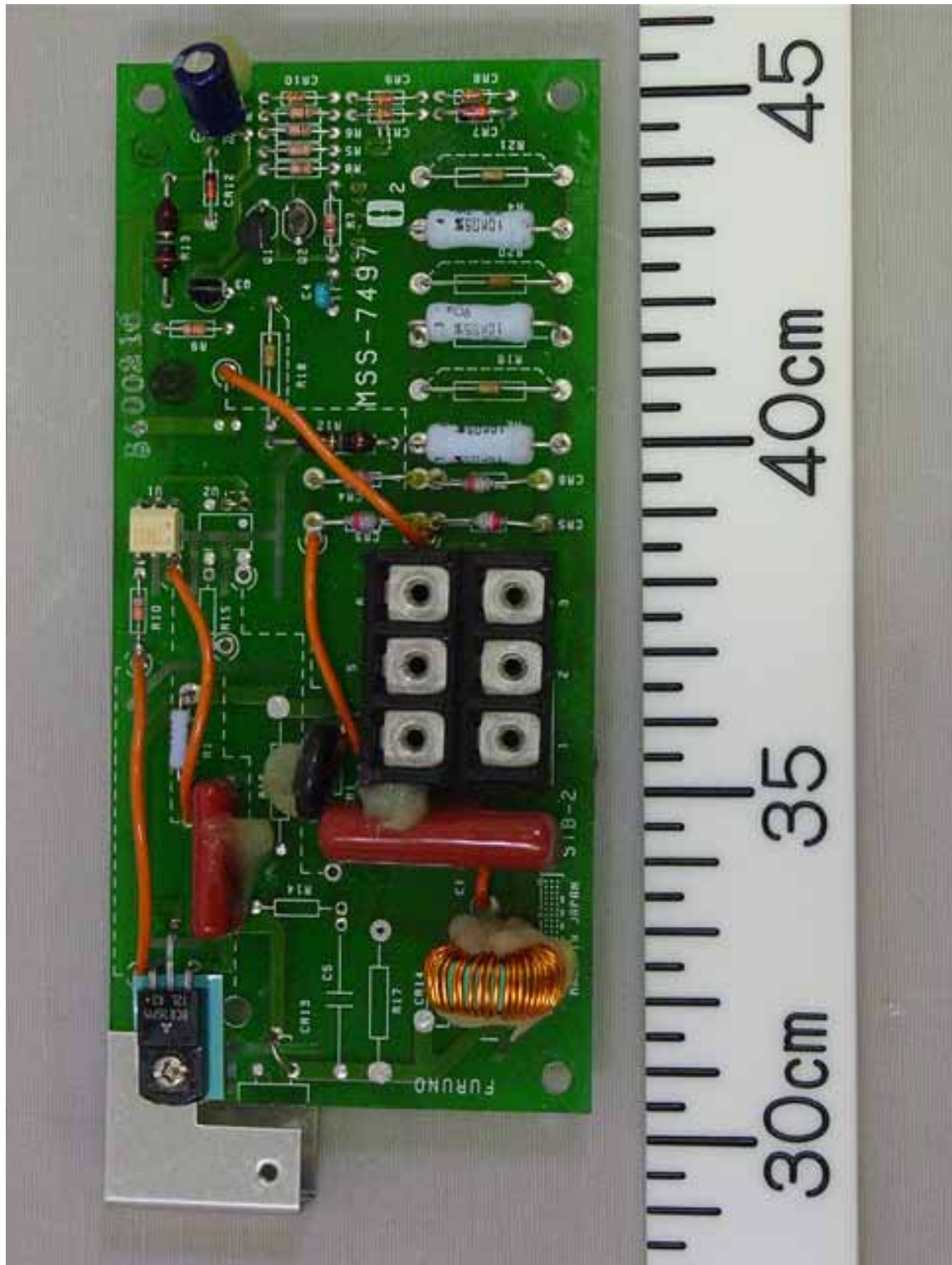
2.9 BP GEN Board 03P9347 Front side



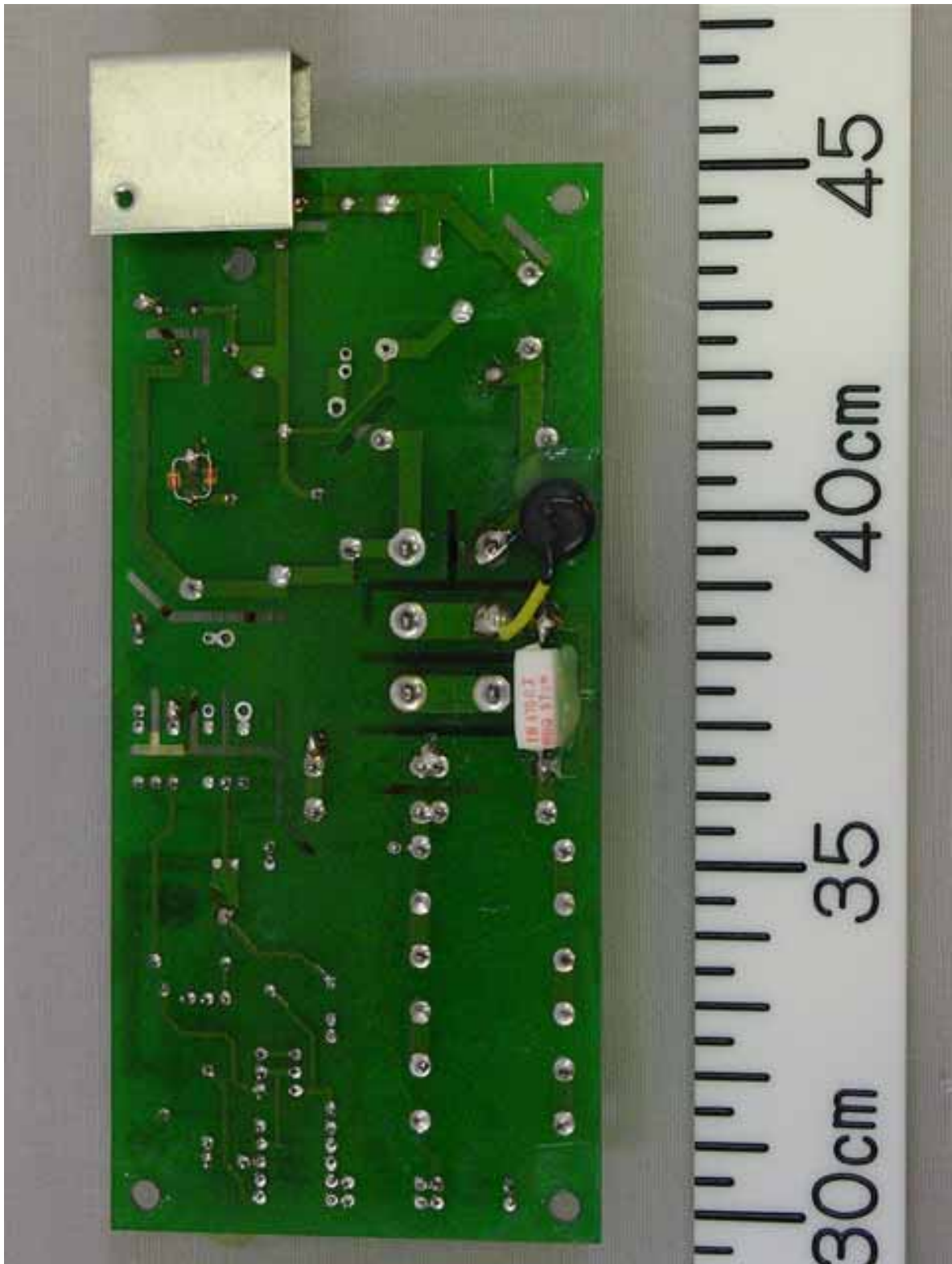
2.10 BP GEN Board 03P9347 Rear side



2.11 MSS Board MSS-7497 Front side



2.12 MSS Board MSS-7497 Rear side



2.13 Name Plate



3 Monitor unit MU-231CR

3.1 Front View



3.2 Rear View (Showing Name Plate and Warning Labels)



3.3 Rear View (Showing Connector Panel)



3.4 Inside View (with Rear Cover removed, showing Power supply (upper), Filter Board 03P9360 (lower left) and DVI I/F Board (lower right))



3.5 Inside View (with Rear Cover removed, Showing Back of LCD Panel)



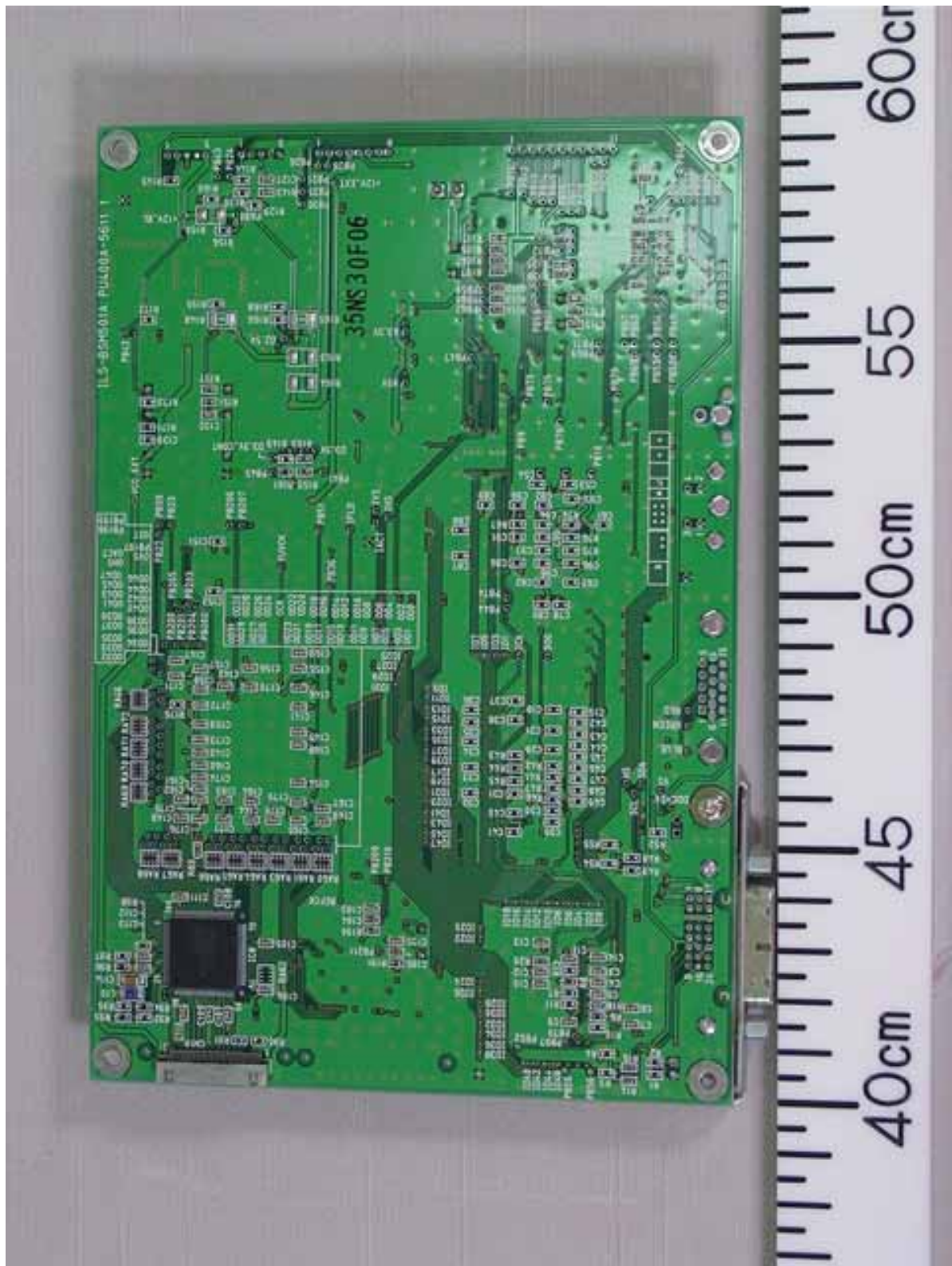
3.6 Inside View (showing Filter module and Power supply (RKW12-13RE))



3.7 DVI I/F Board BSM501 Front side



3.8 DVI I/F Board BSM501 Rear side



3.9 Name Plate and Warning Label

