

Attachment E Photographs of EUT FAR-2827W (Transceiver type RTR-081)

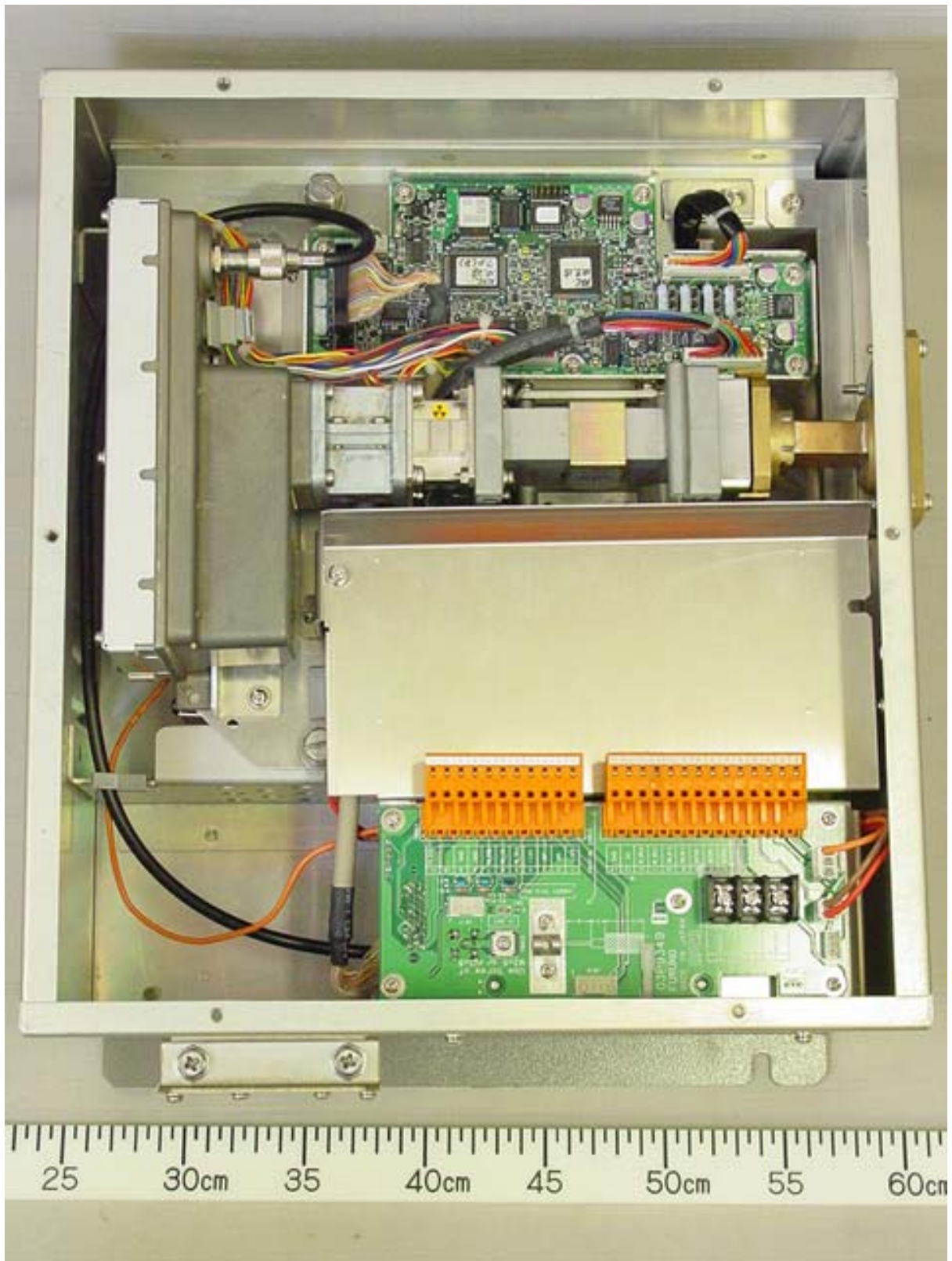
1 Transceiver unit RTR-081

1.1 Front and Bottom View (Showing Name Plate and Warning Label on Top cover)

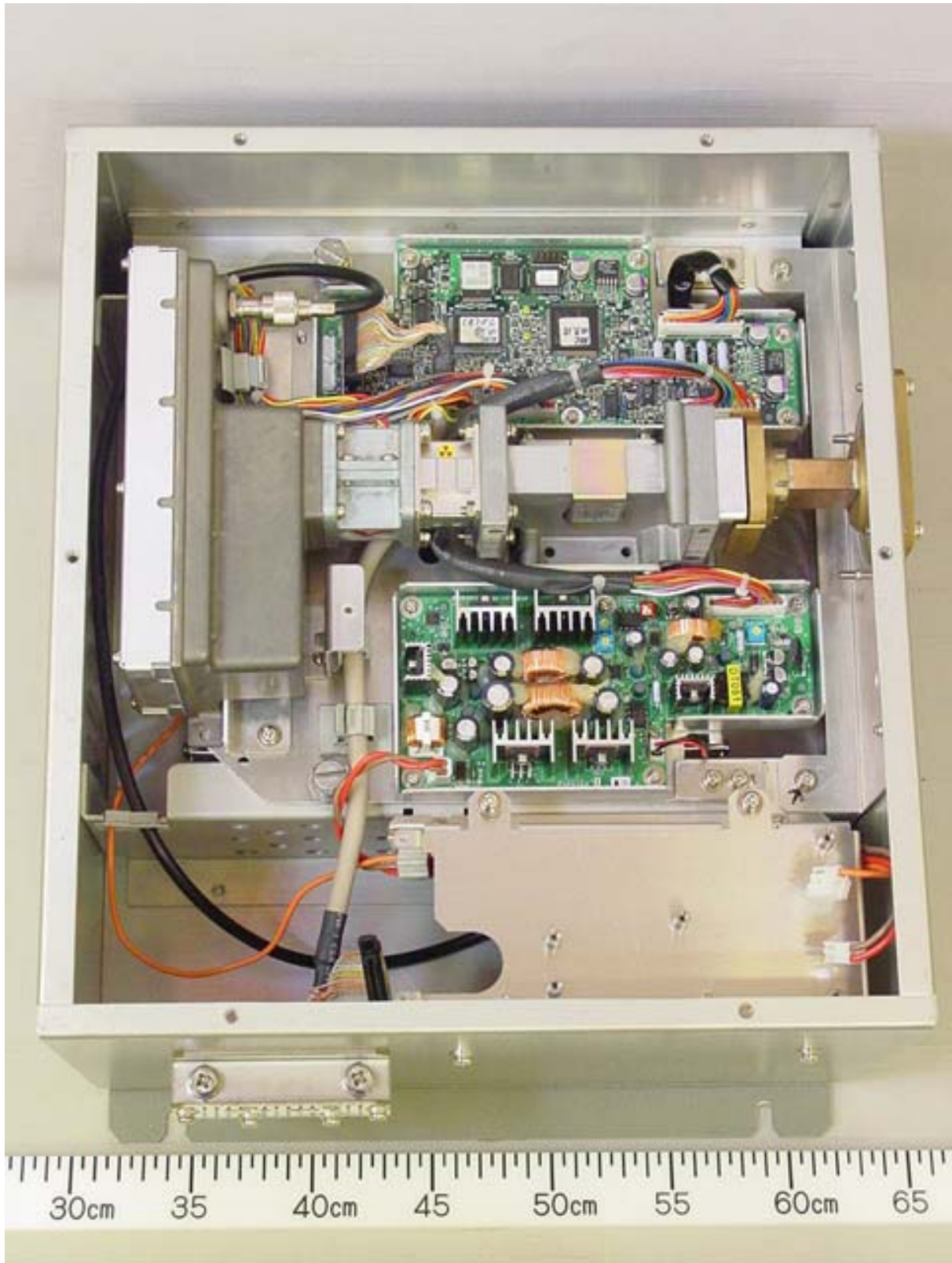


Note: Photographs for the units of Processor RPU-013 and Control RCU-014 have been already reported.
(See Technical Information FLI 12-03-027 for the Radar FAR-2127 (Transceiver type: RTR-079))

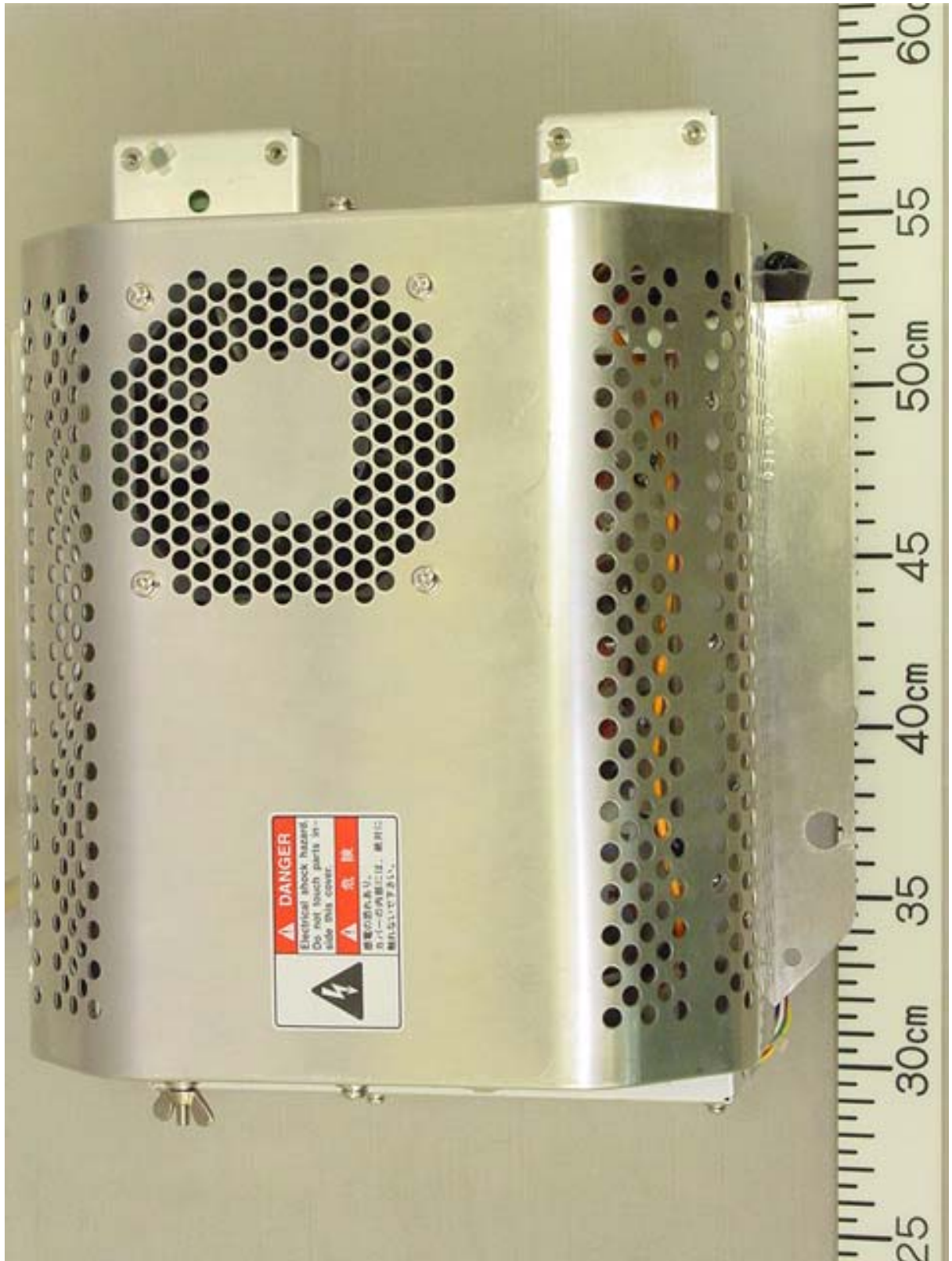
1.2 Inside View (with Top cover removed, showing Transceiver module (upper) and TB Board 03P9349 (lower))



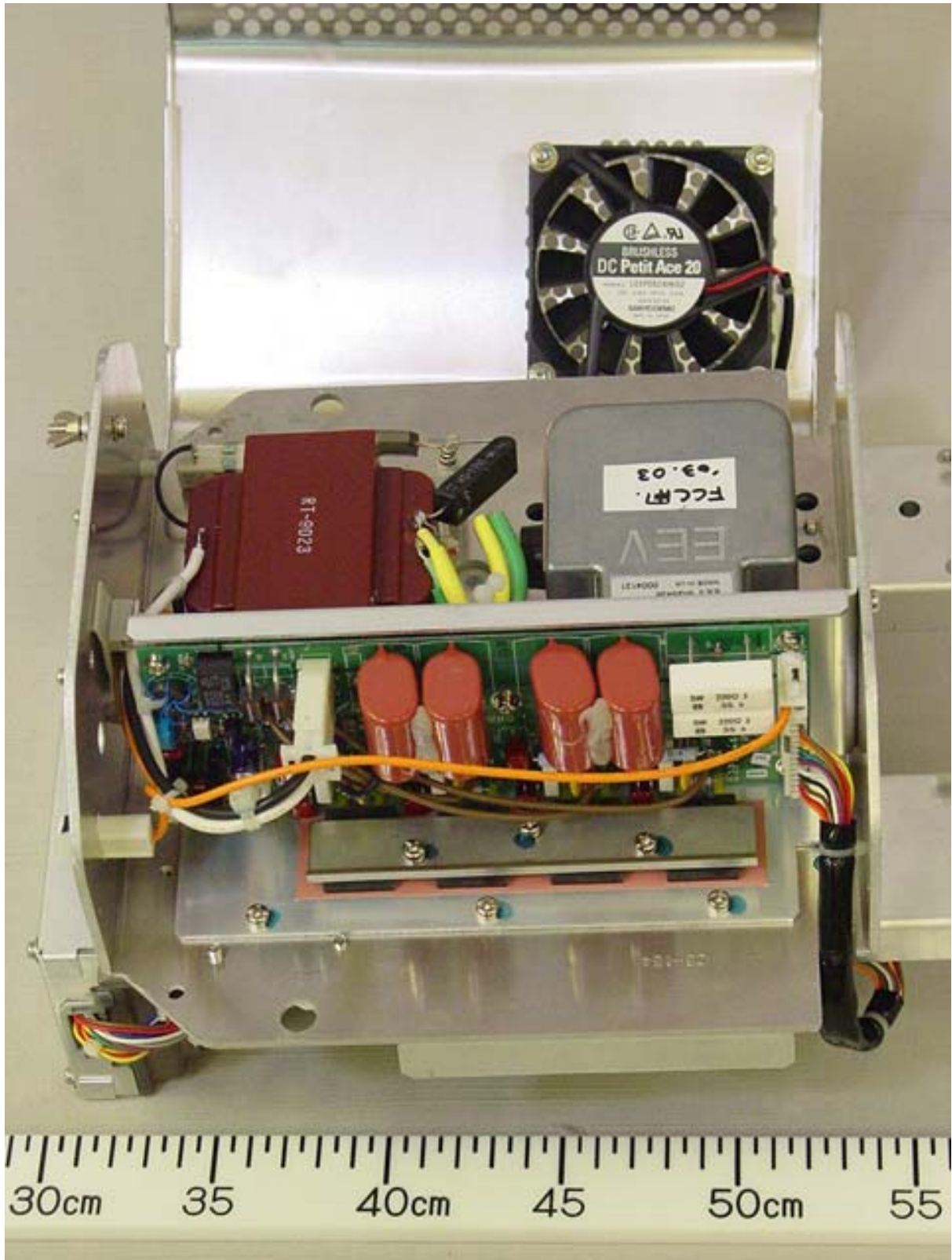
1.3 Inside View (with TB Board removed, showing PWR Board 03P9348 (lower) and RFC Board 03P9346 (upper) and IF AMP block (left, contained in the shield-case))



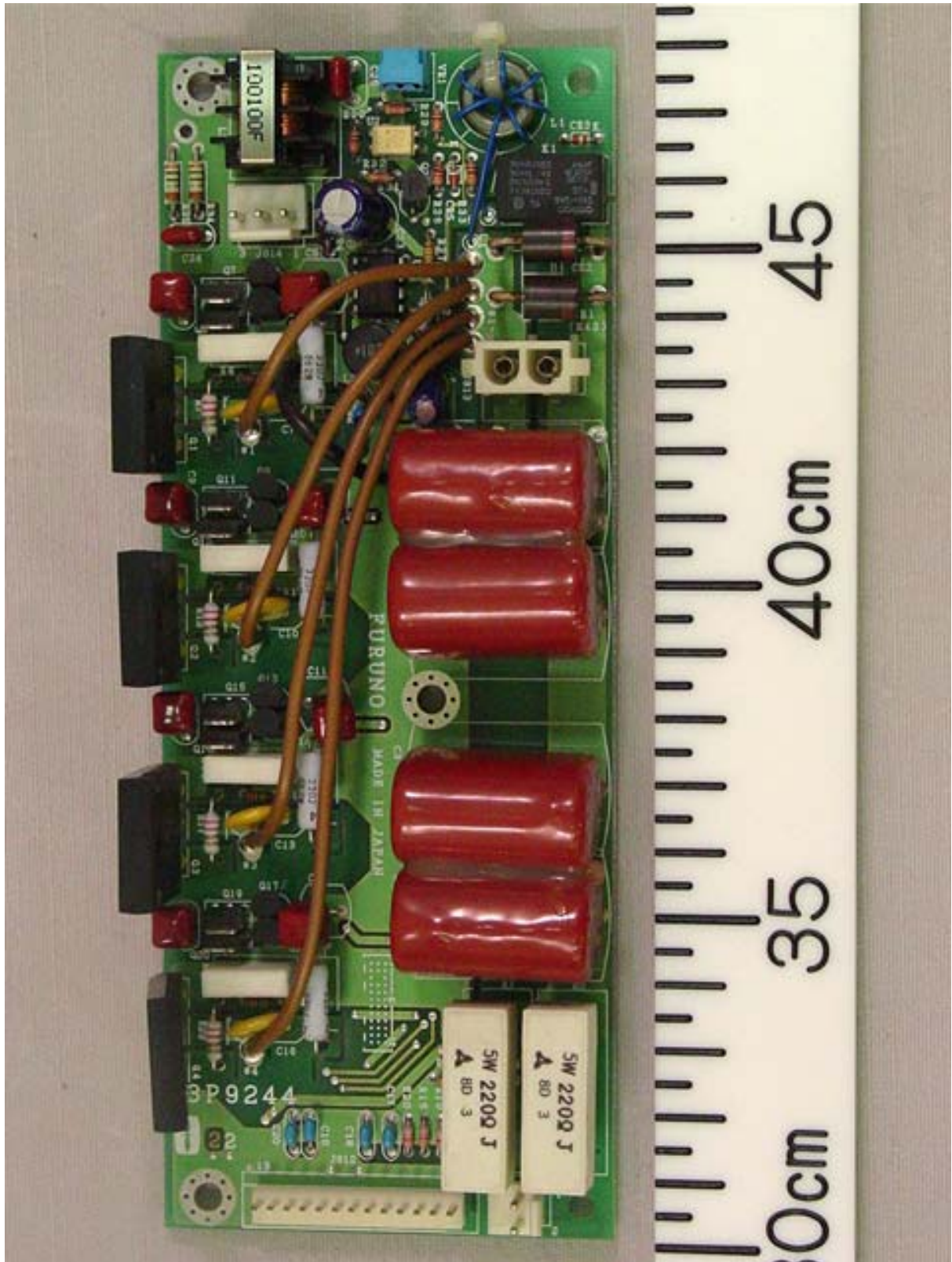
1.4 Transceiver Module Rear View



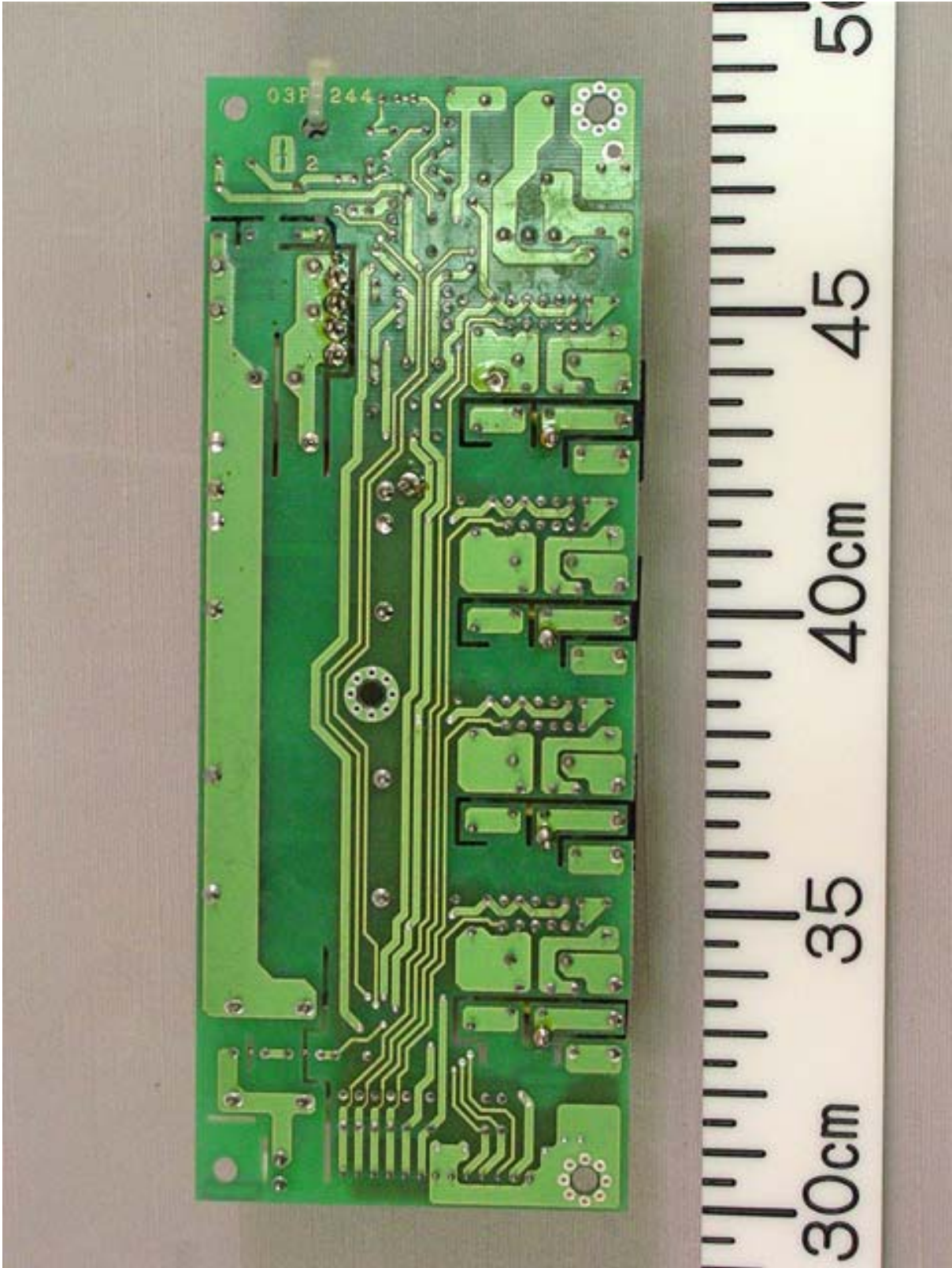
1.5 Transceiver Module Inside View (with Shield-cover opened, showing Pulse Transformer (center left), Magnetron (center right) and MD Board 03P9244 (lower))



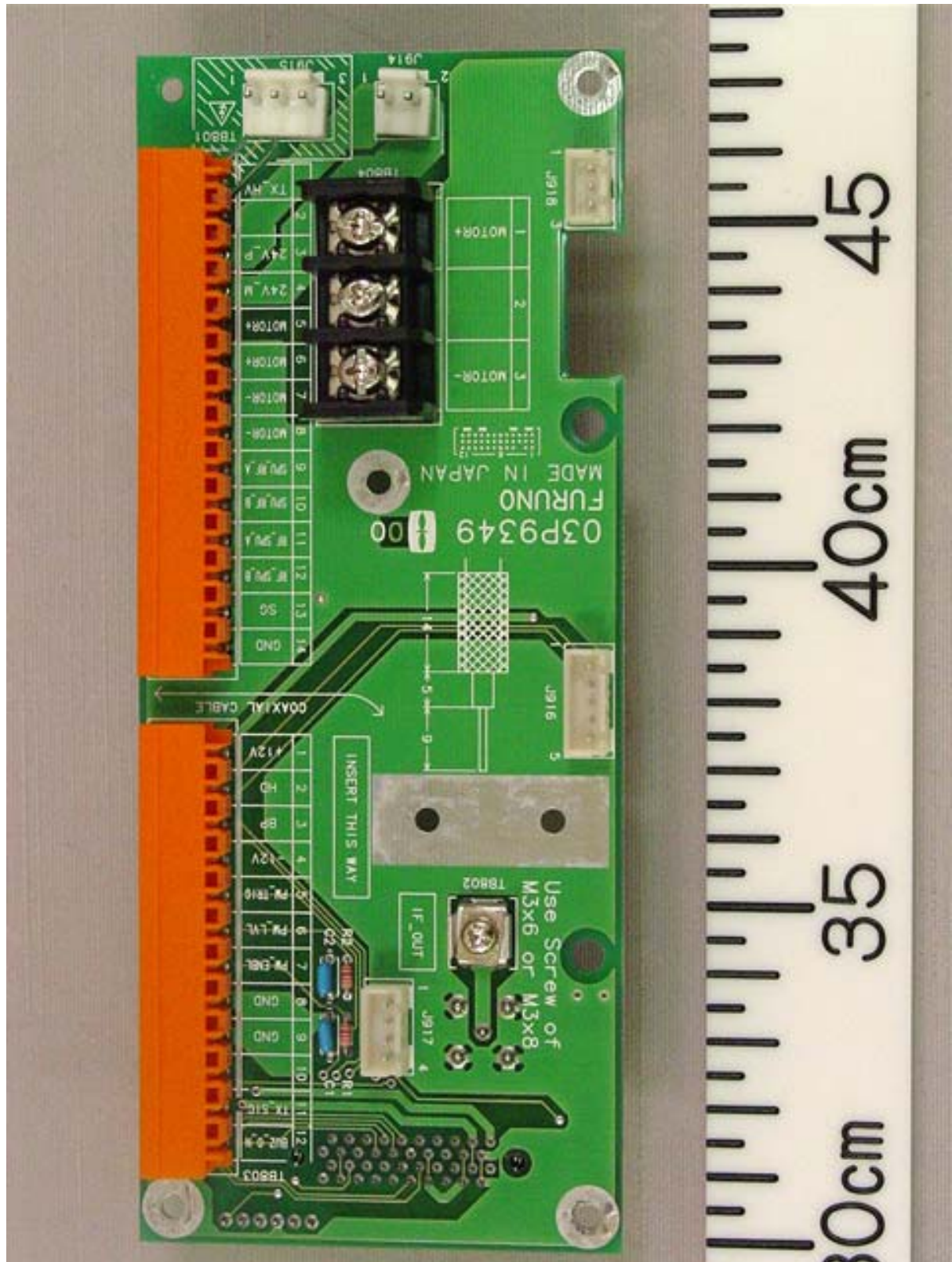
1.6 MD Board 03P9244 Front side



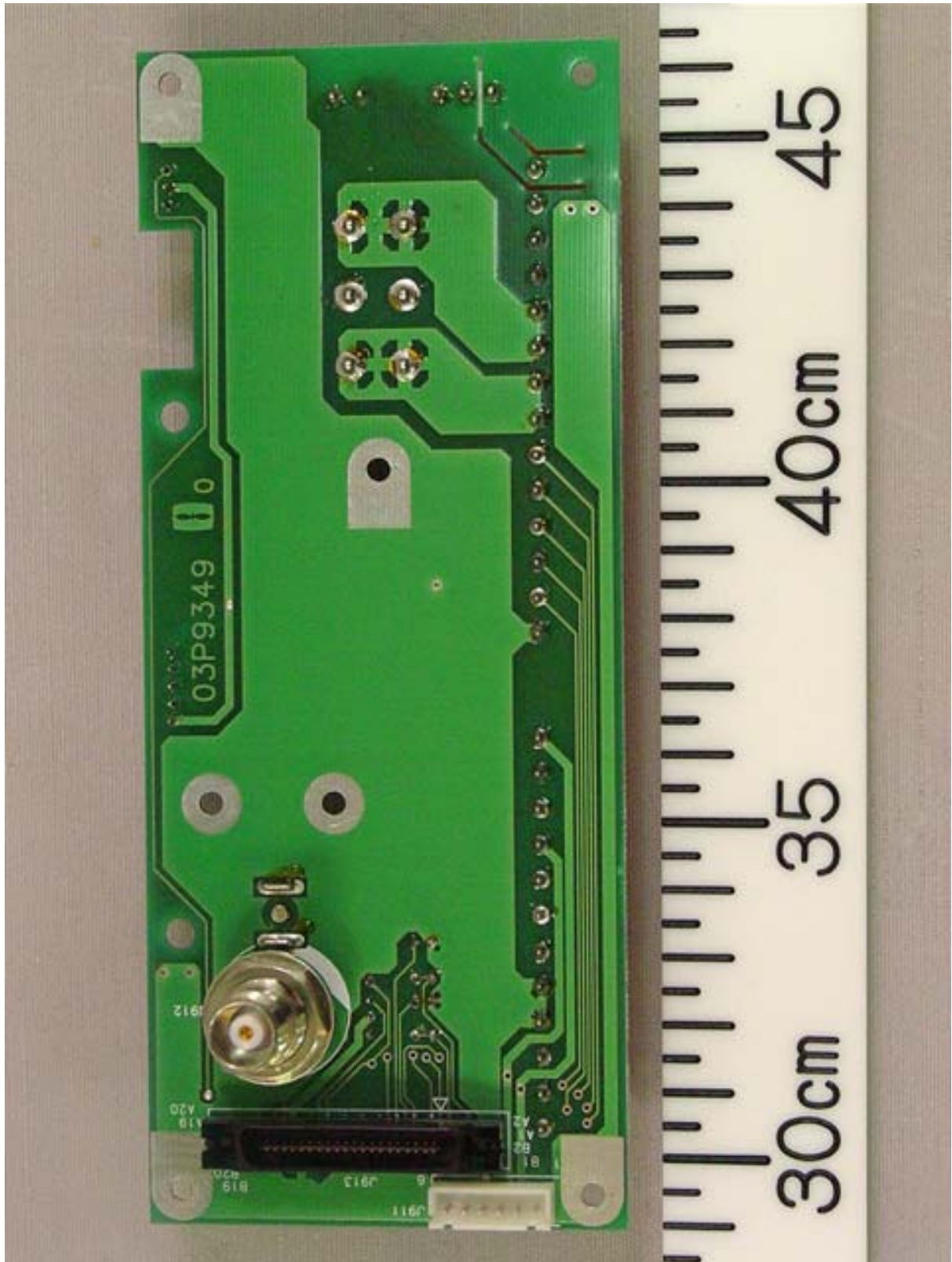
1.7 MD Board 03P9244 Rear side



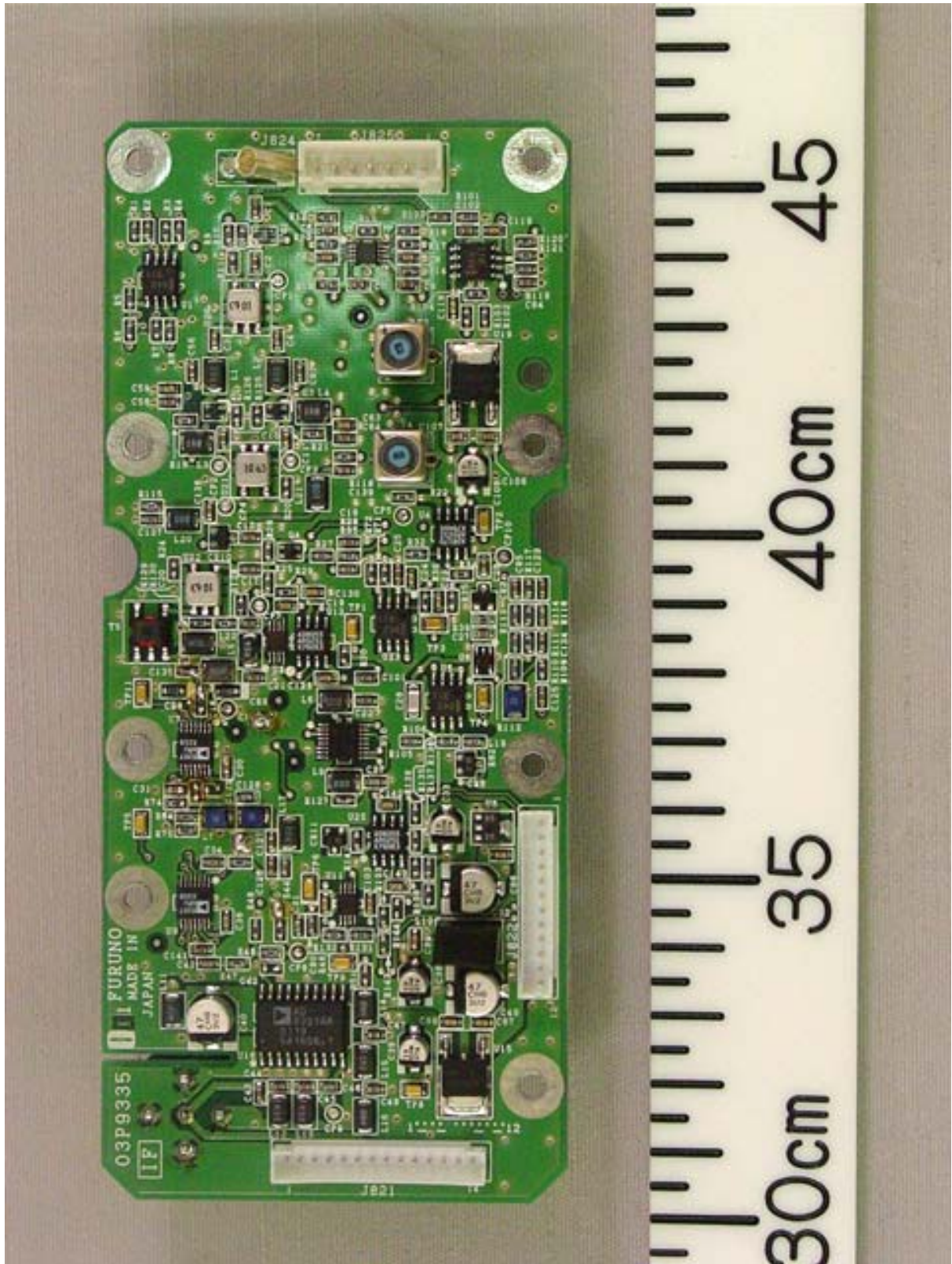
1.8 TB Board 03P9349 Front side



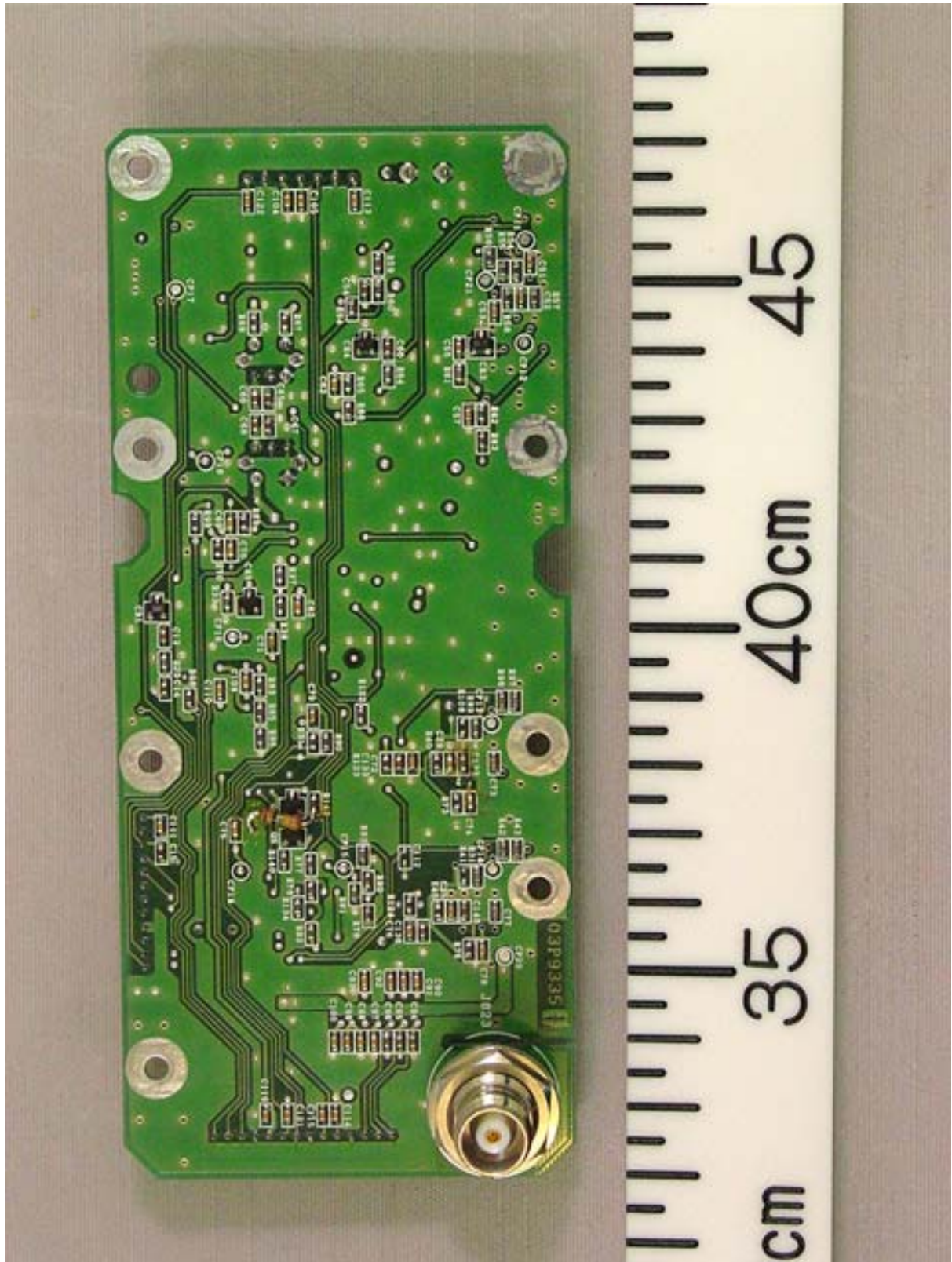
1.9 TB Board 03P9349 Rear side



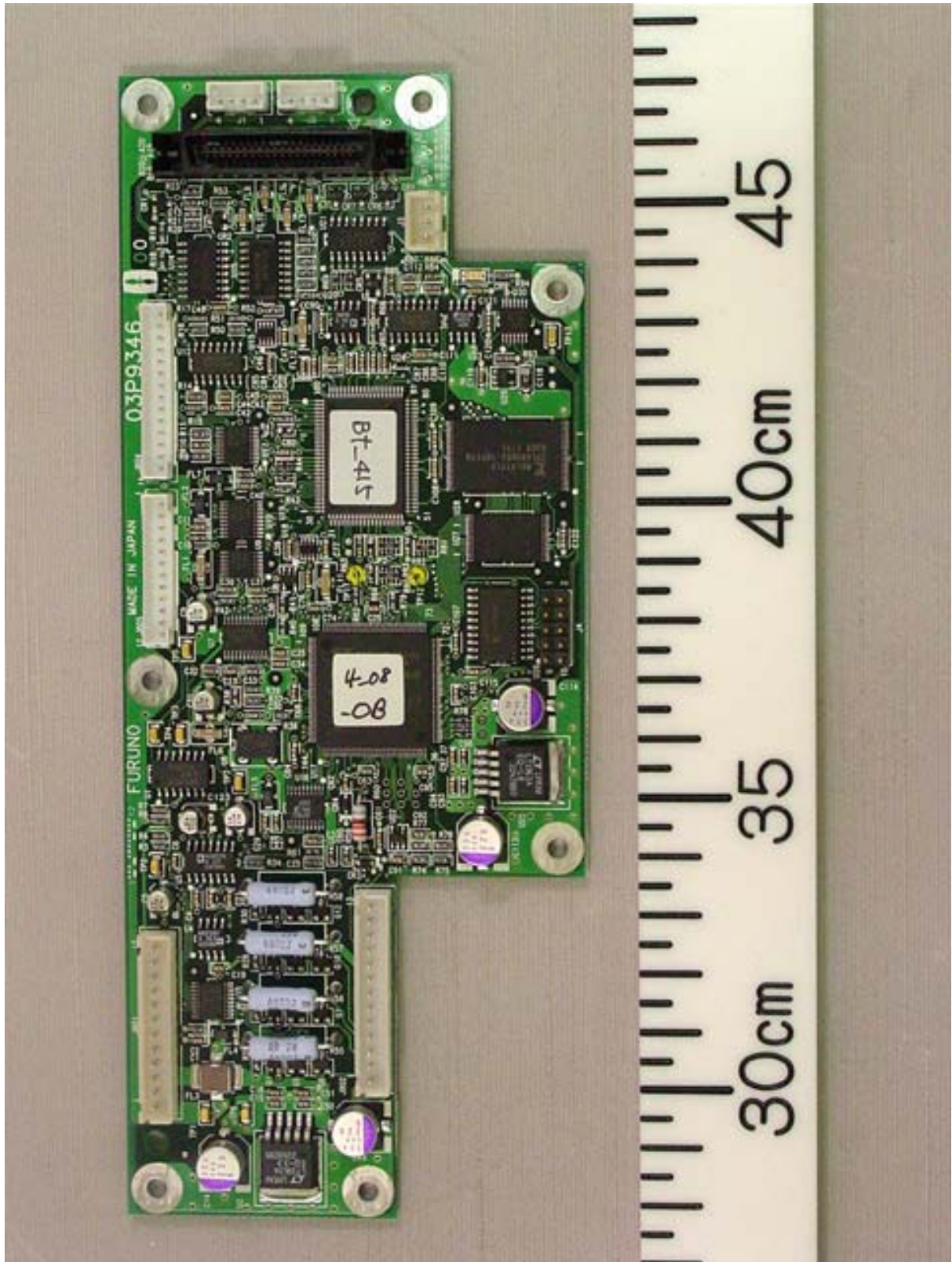
1.10 IF AMP Board 03P9335 Front side



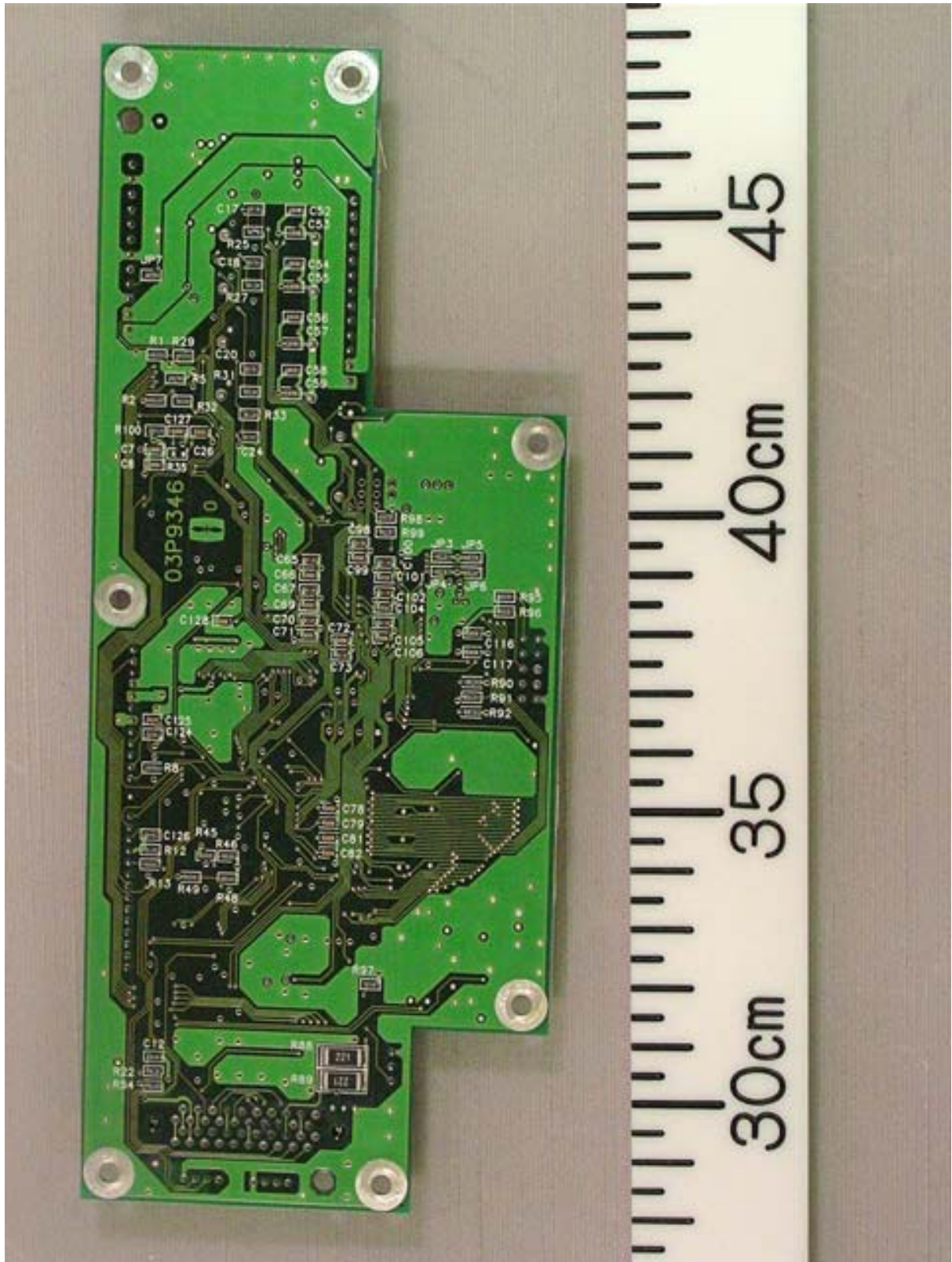
1.11 IF AMP Board 03P9335 Rear side



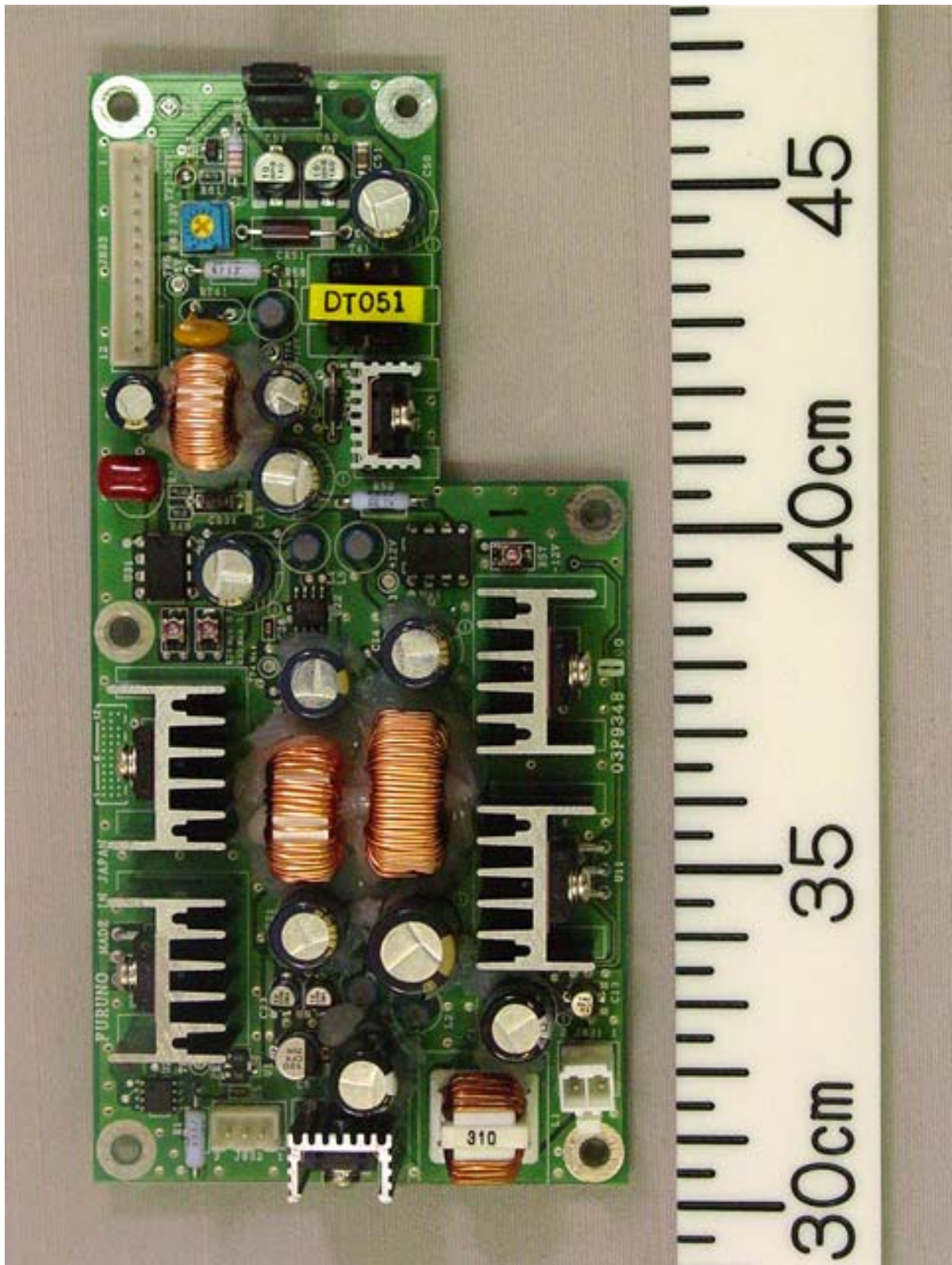
1.12 RFC Board 03P9346 Front side



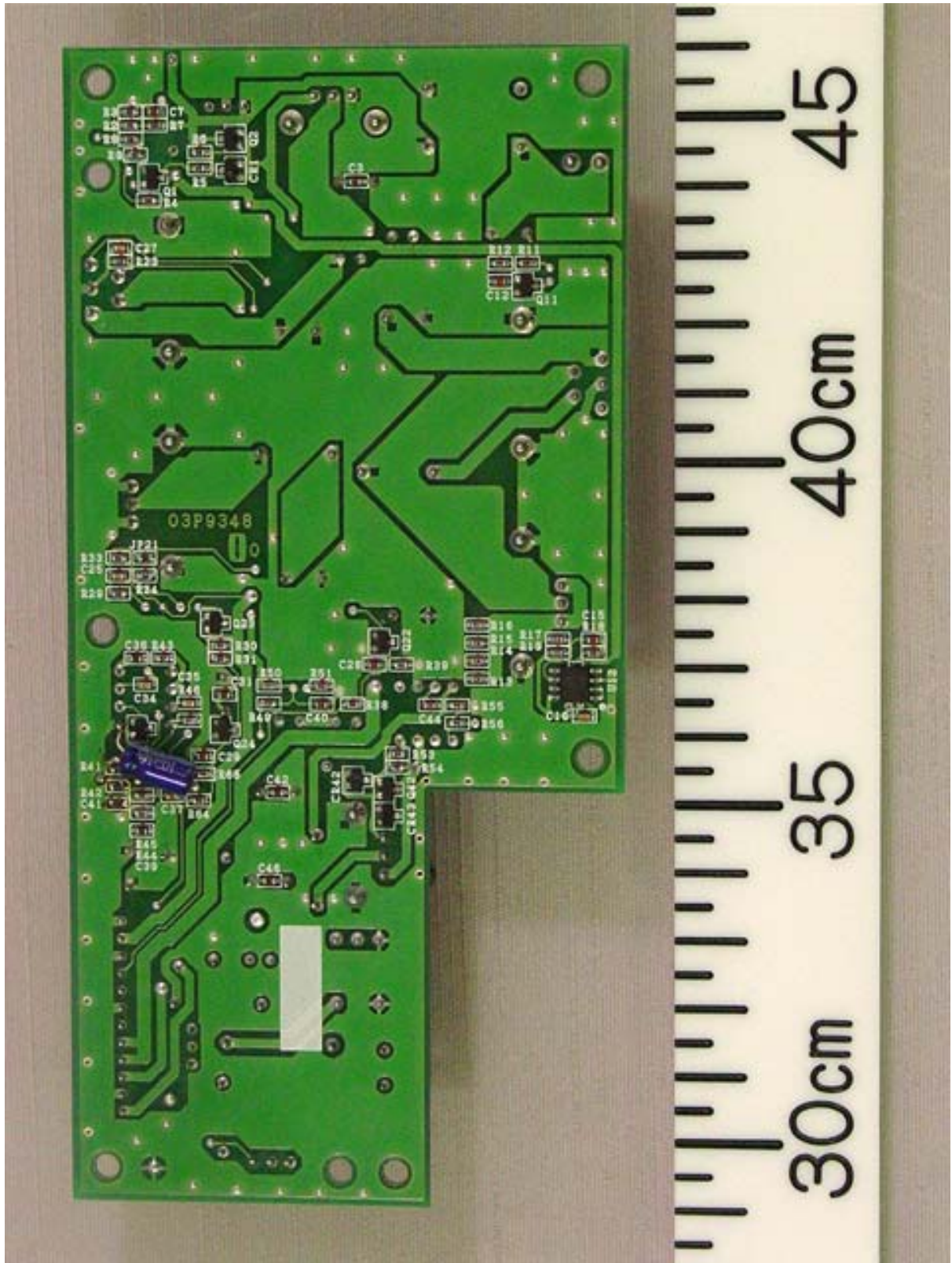
1.13 RFC Board 03P9346 Rear side



1.14 PWR Board 03P9348 Front side



1.15 PWR Board 03P9348 Rear side



1.16 Name Plate



2 Antenna unit RSB-103

2.1 Outside View (showing Radiator XN-24AF and Scanner)



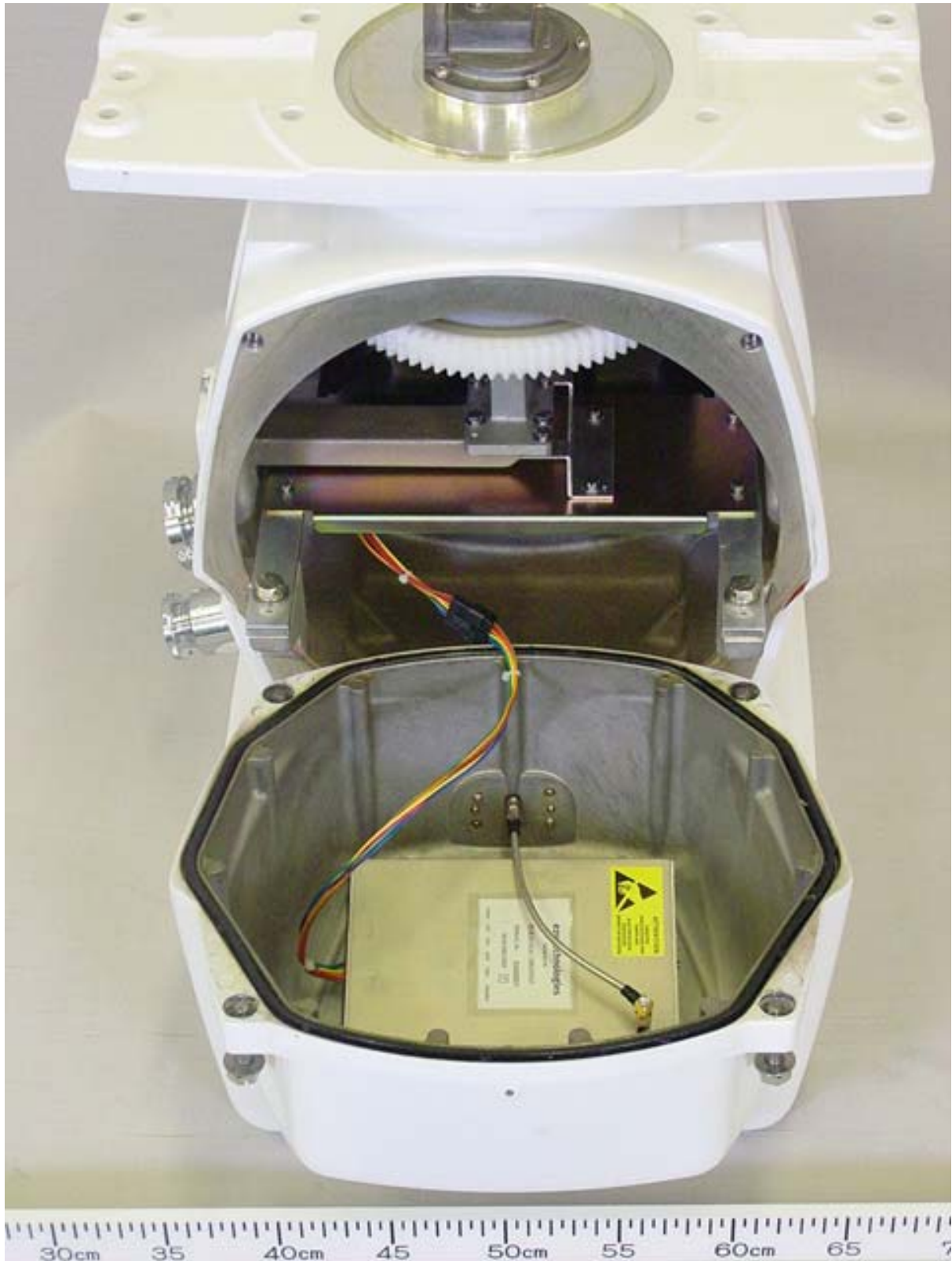
2.2 Outside View



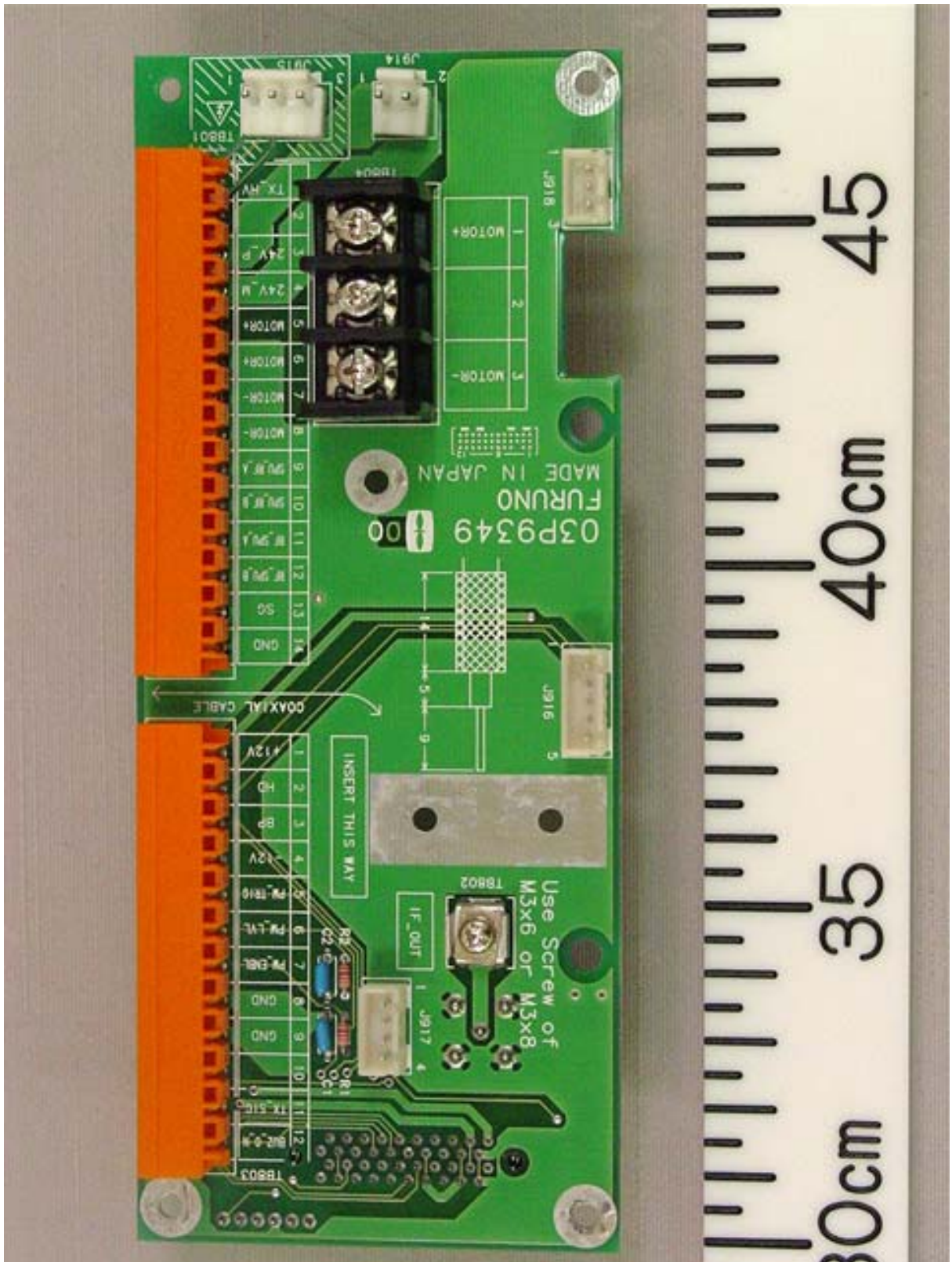
2.3 Inside Front View (with Scanner Front Cover removed, showing TB Board 03P9349 (lower) and BP GEN Board 03P9347 (upper right))



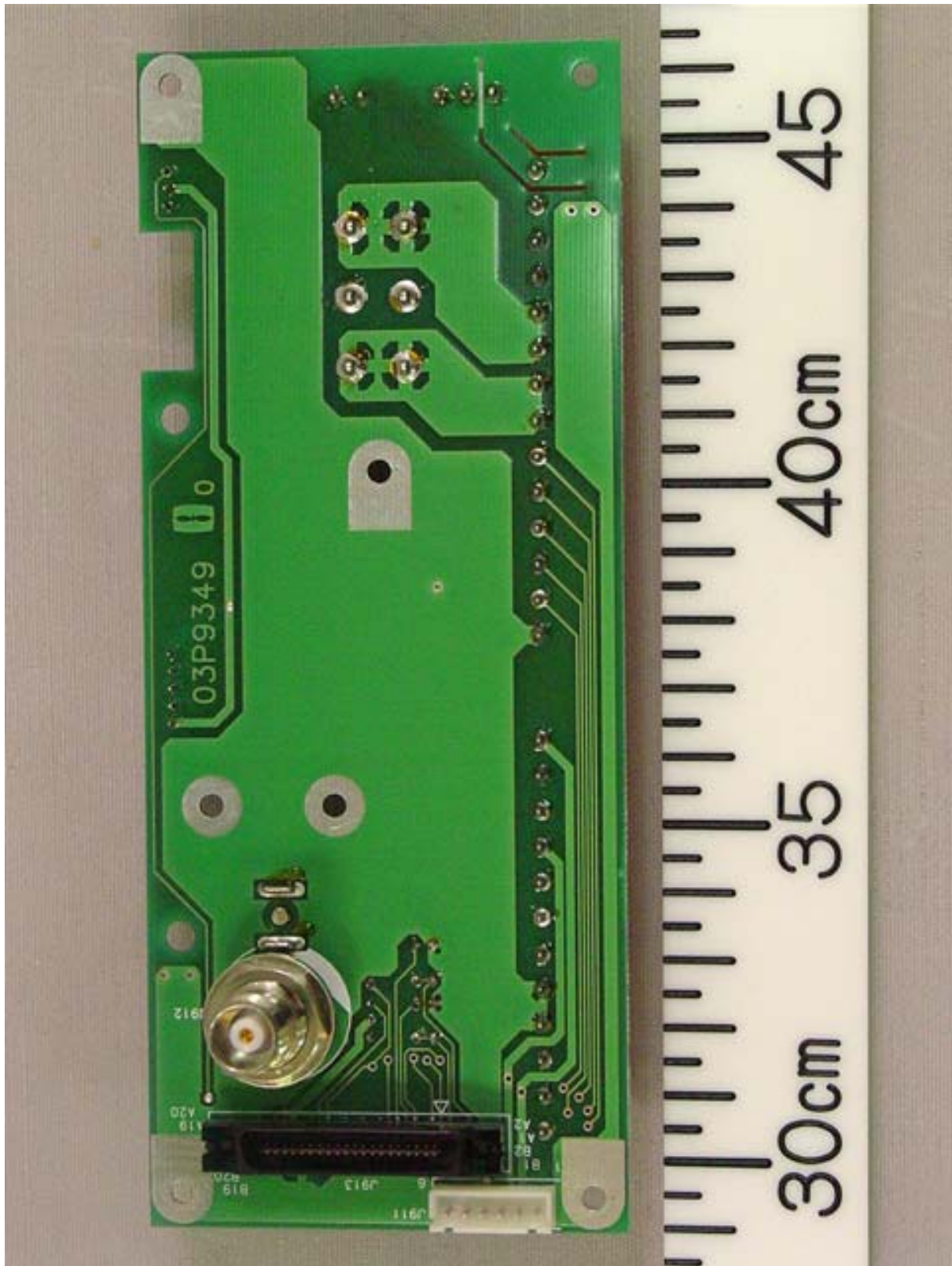
2.4 Inside Rear View (with Scanner Rear Cover removed, showing Performance Monitor PM-31 (lower))



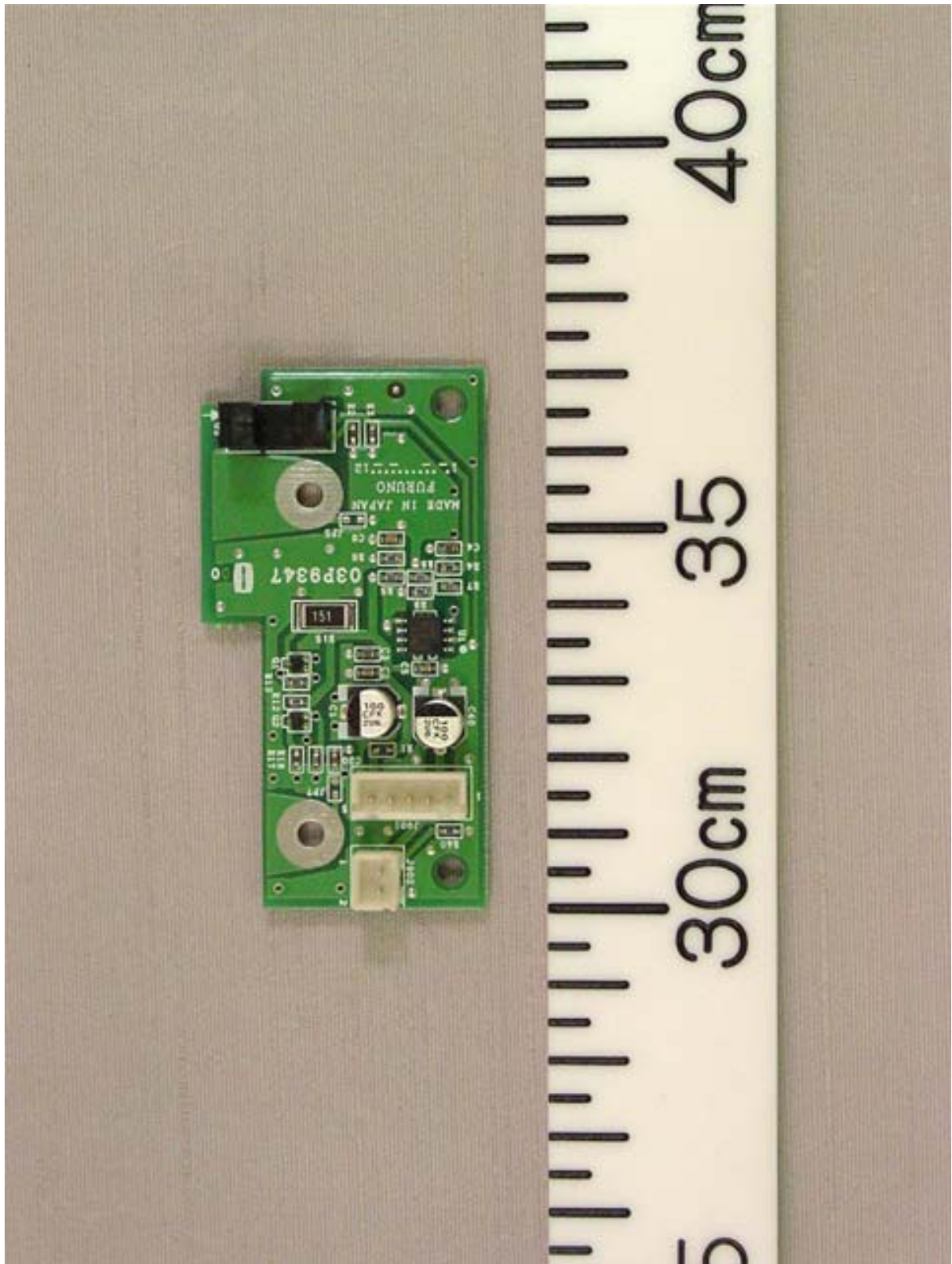
2.5 TB Board 03P9349 Front side



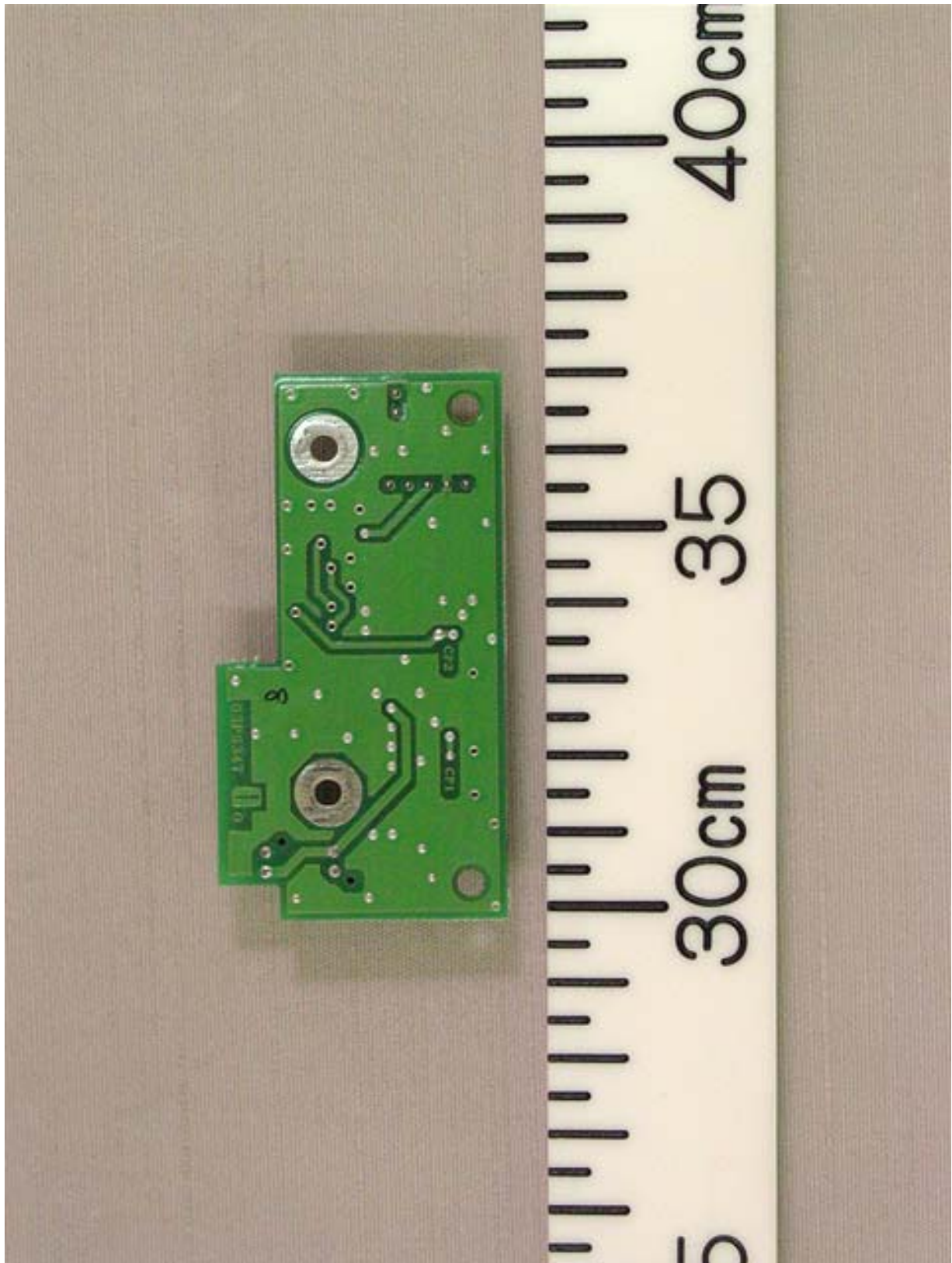
2.6 TB Board 03P9349 Rear side



2.7 BP GEN Board 03P9347 Front side



2.8 BP GEN Board 03P9347 Rear side



2.9 Name Plate



3 Monitor unit MU-231CR

3.1 Front View



3.2 Rear View (Showing Name Plate and Warning Labels)



3.3 Rear View (Showing Connector Panel)



3.4 Inside View (with Rear Cover removed, showing Power supply (upper), Filter Board 03P9360 (lower left) and DVI I/F Board (lower right))



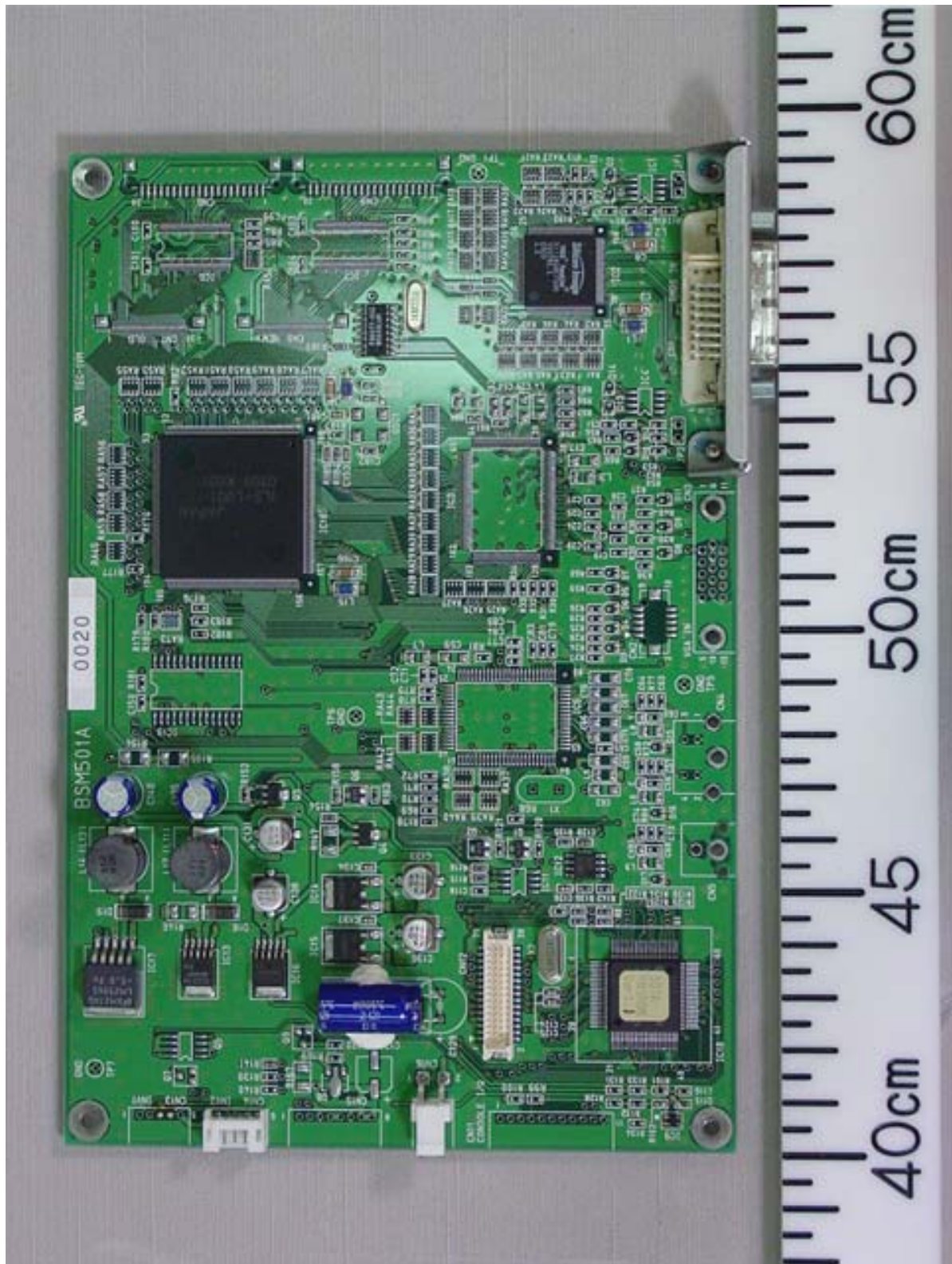
3.5 Inside View (with Rear Cover removed, Showing Back of LCD Panel)



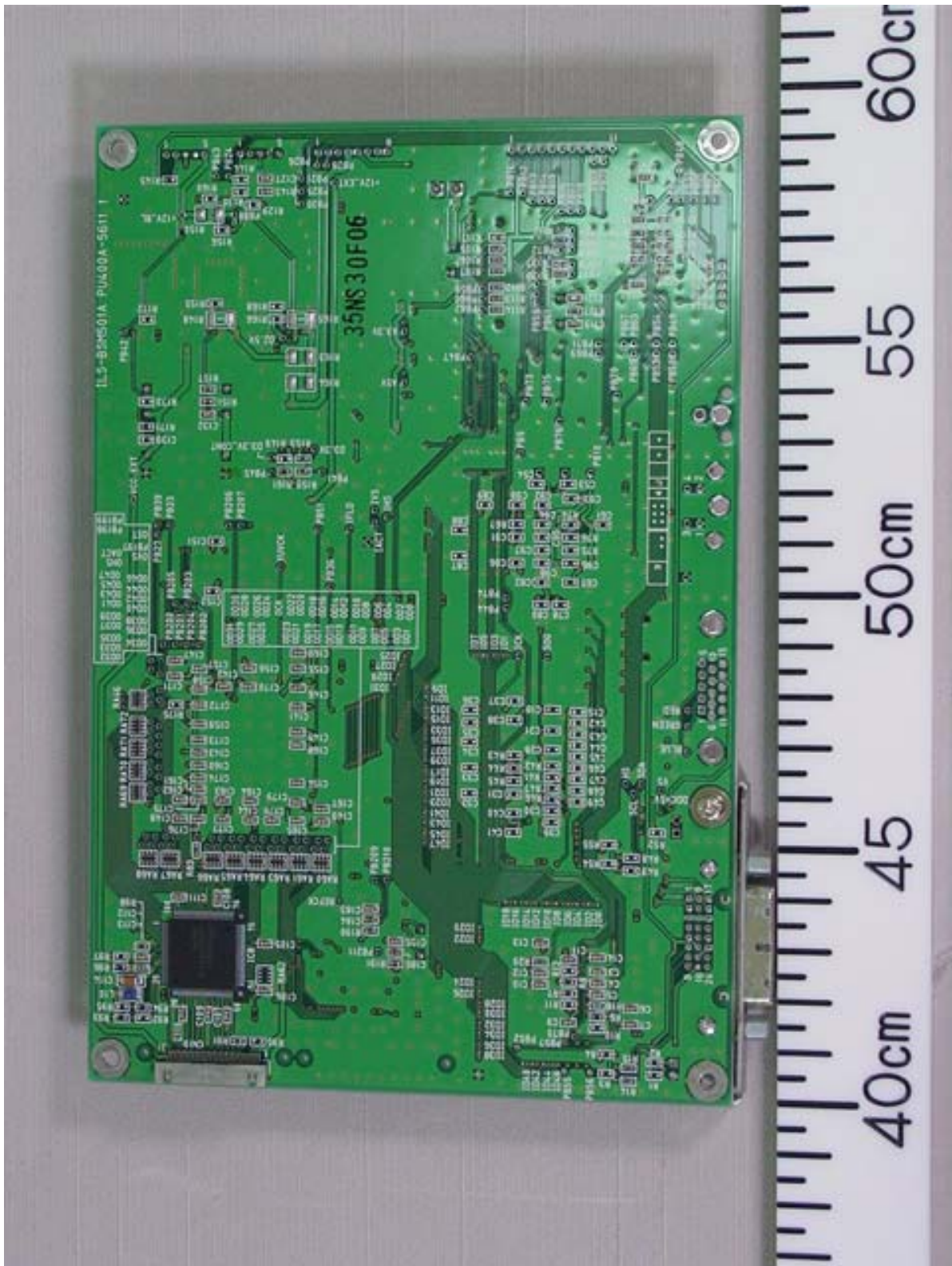
3.6 Inside View (showing Filter module and Power supply (RKW12-13RE))



3.7 DVI I/F Board BSM501 Front side



3.8 DVI I/F Board BSM501 Rear side



3.9 Name Plate and Warning Label

