

## 2 Processor unit RPU-013

### 2.1 Front View (Showing Name Plate and Warning Label on Top cover)



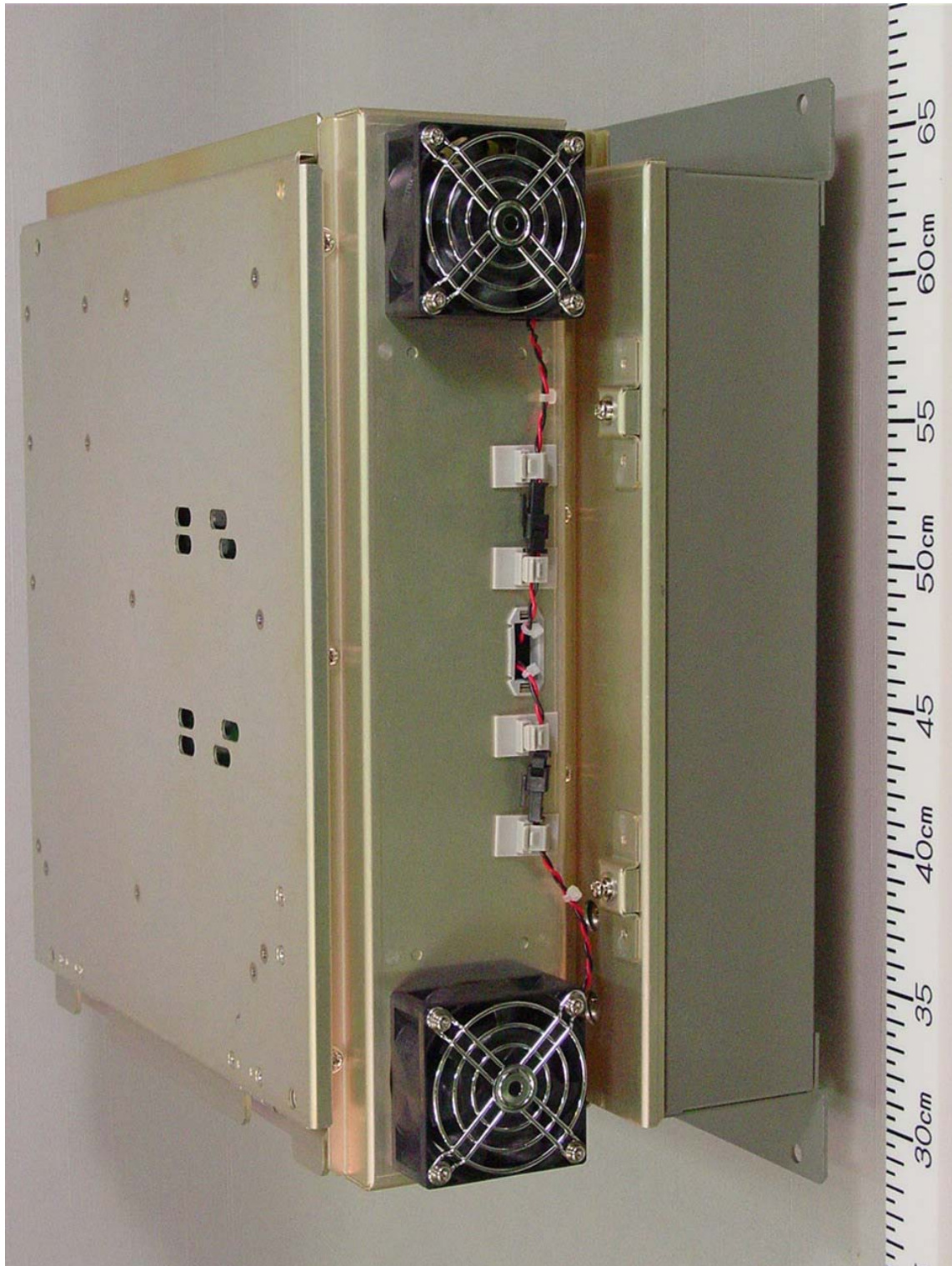
2.2 Rear View



## 2.3 Inside View (with Top cover removed, showing Front side)



2.4 Inside View (with Top cover removed, showing Rear side)



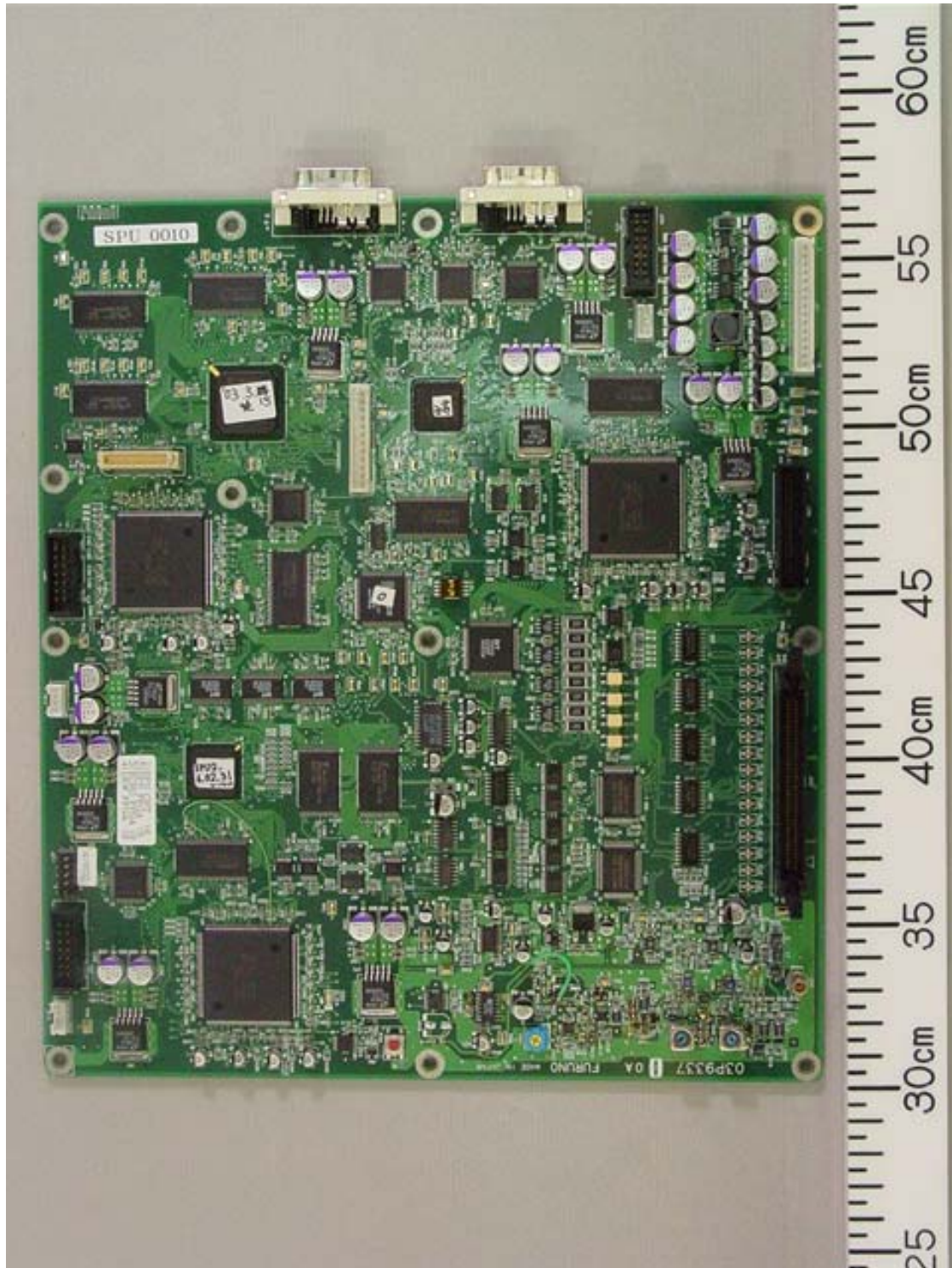
2.5 Inside View (with Lid opened, showing SPU Board (upper), NET Board (upper right), HV Board (center Left), AC FIL Board (center Right), and AC PWR Board (lower))



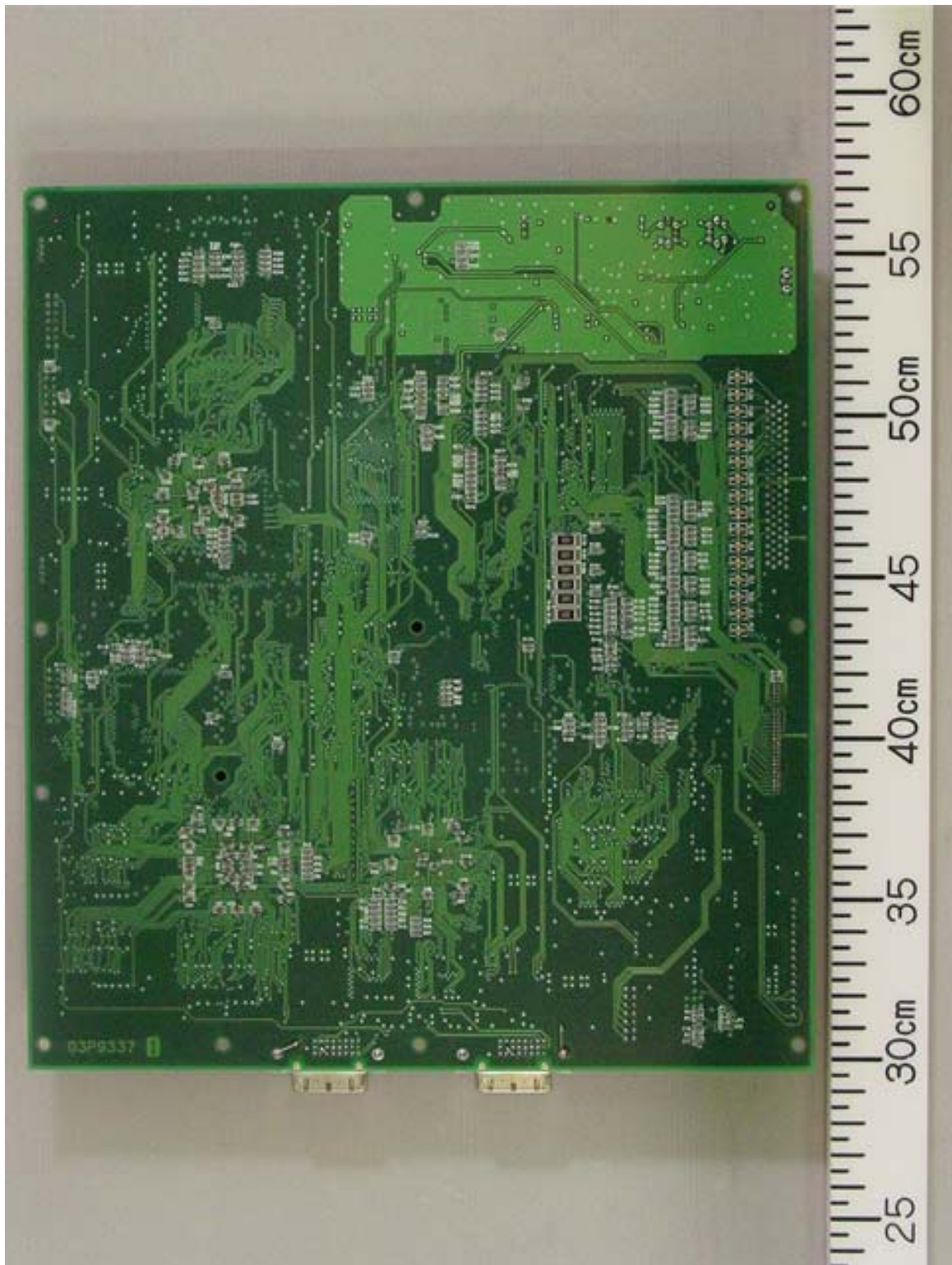
2.6 Inside View (with Lids opened, showing GC-10 Board (upper), DVI I/F Board (lower left) and TB Board (lower right))



2.7 SPU Board 03P9337 Front side

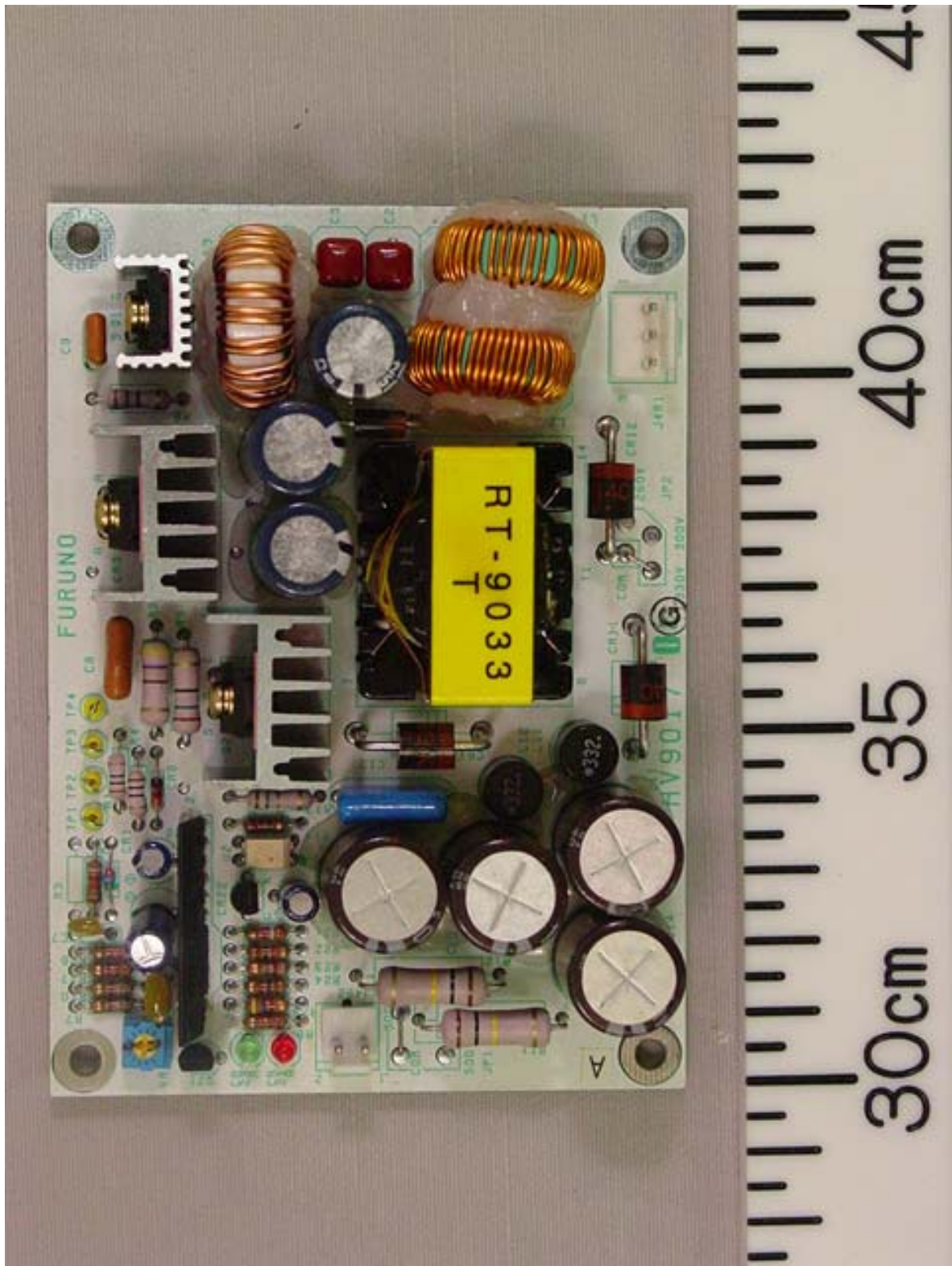


2.8 SPU Board 03P9337 Rear side

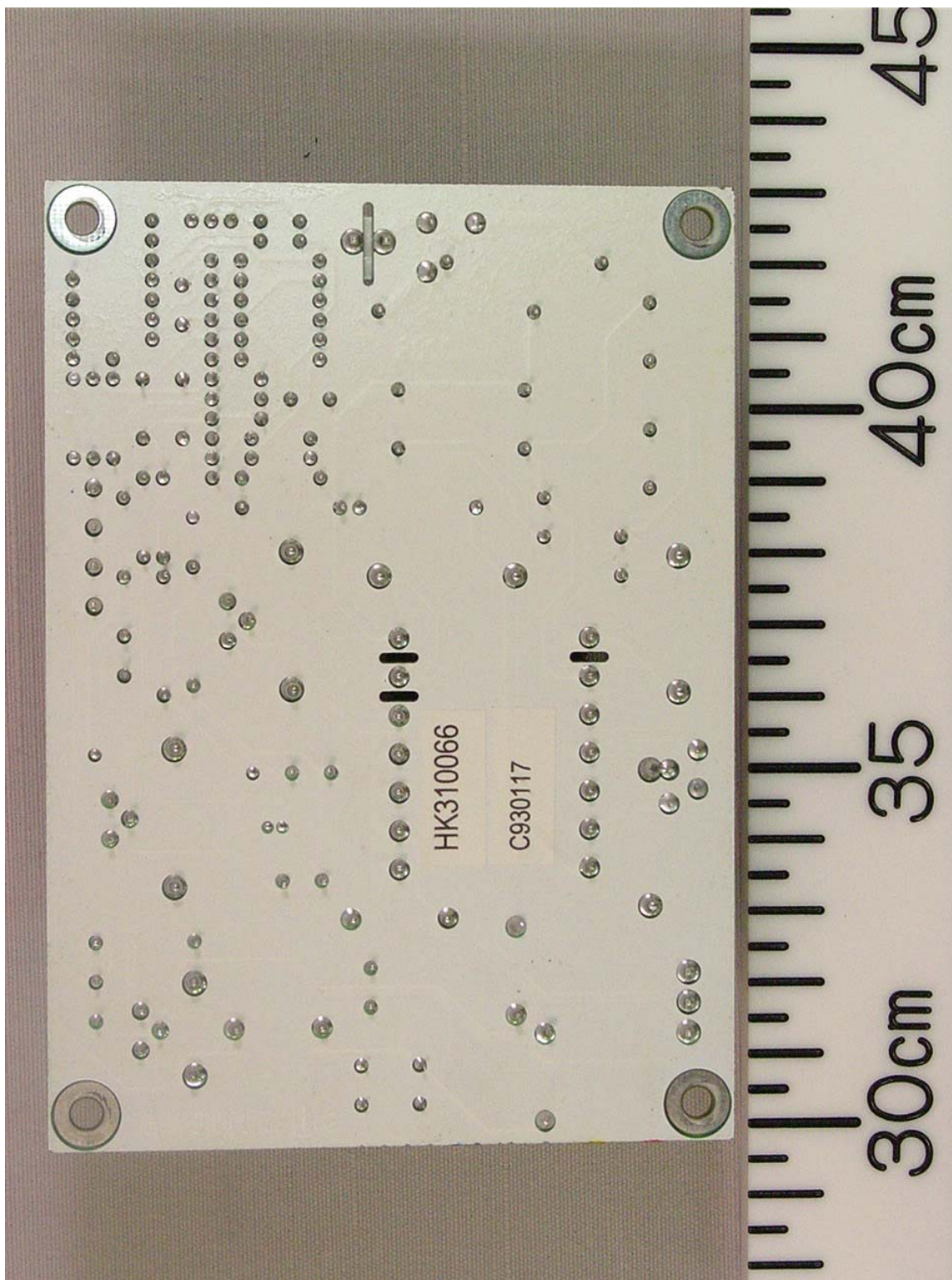




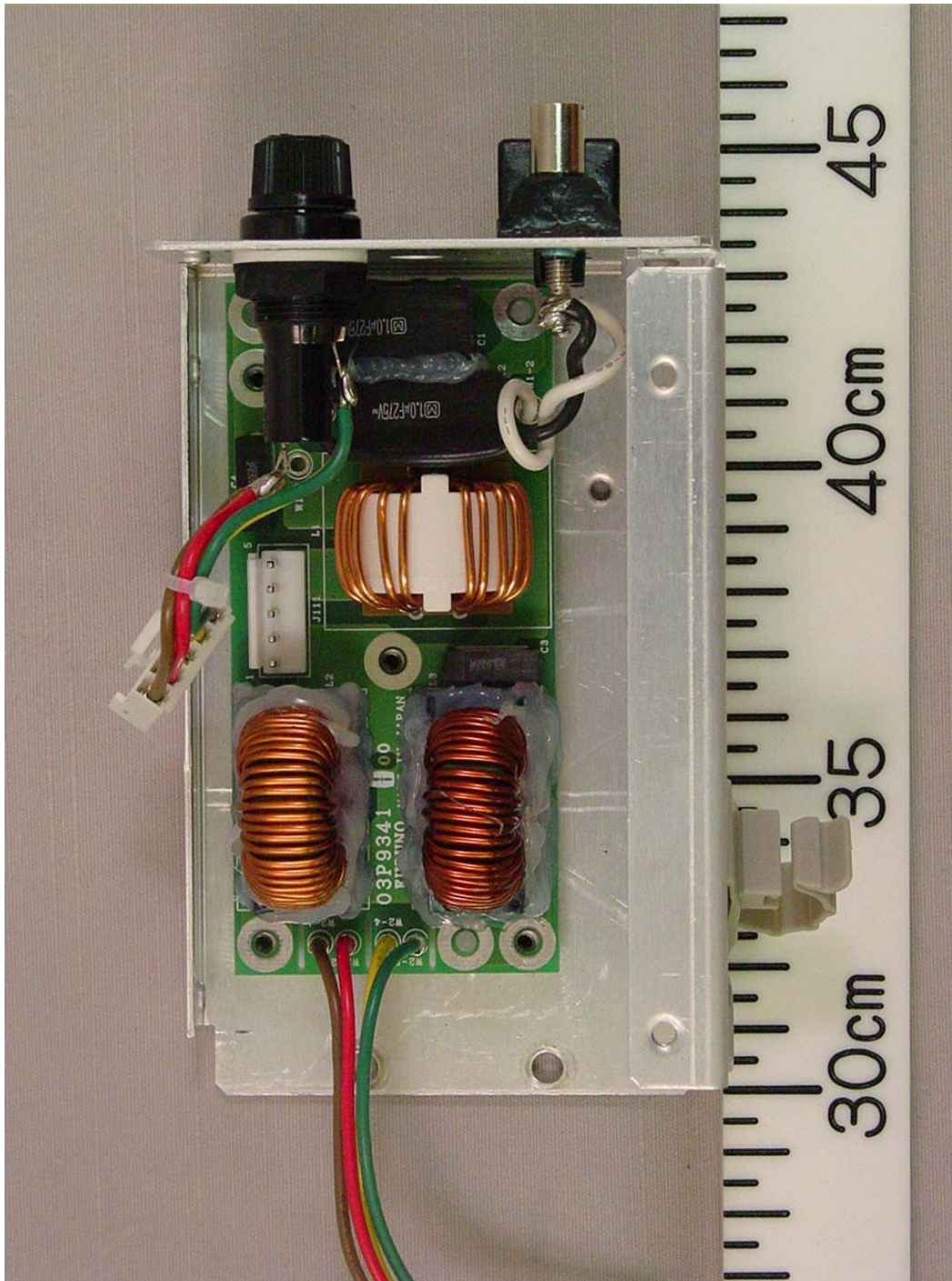
2.9 HV Board HV9017 Front side



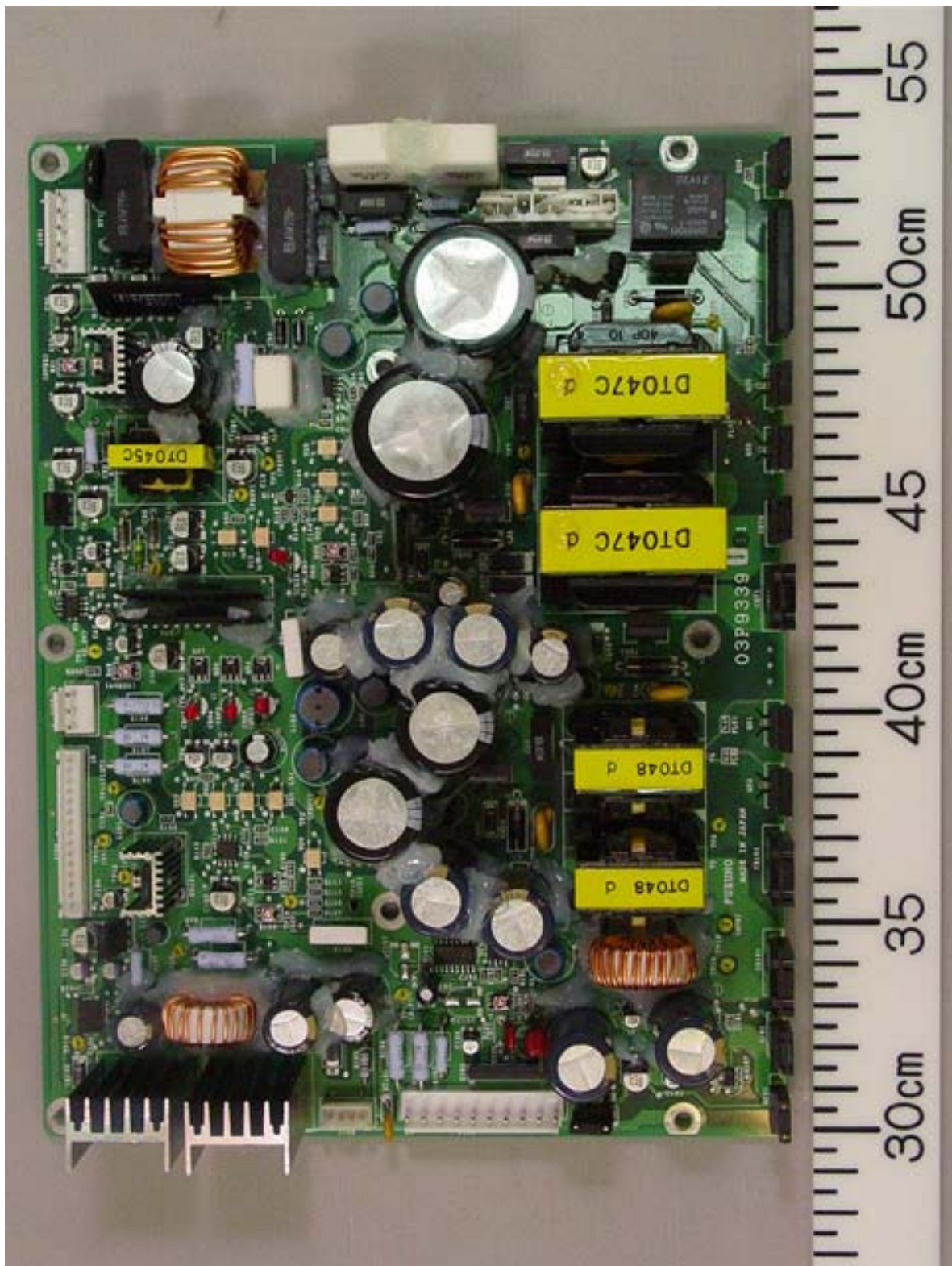
2.10 HV Board HV9017 Rear side



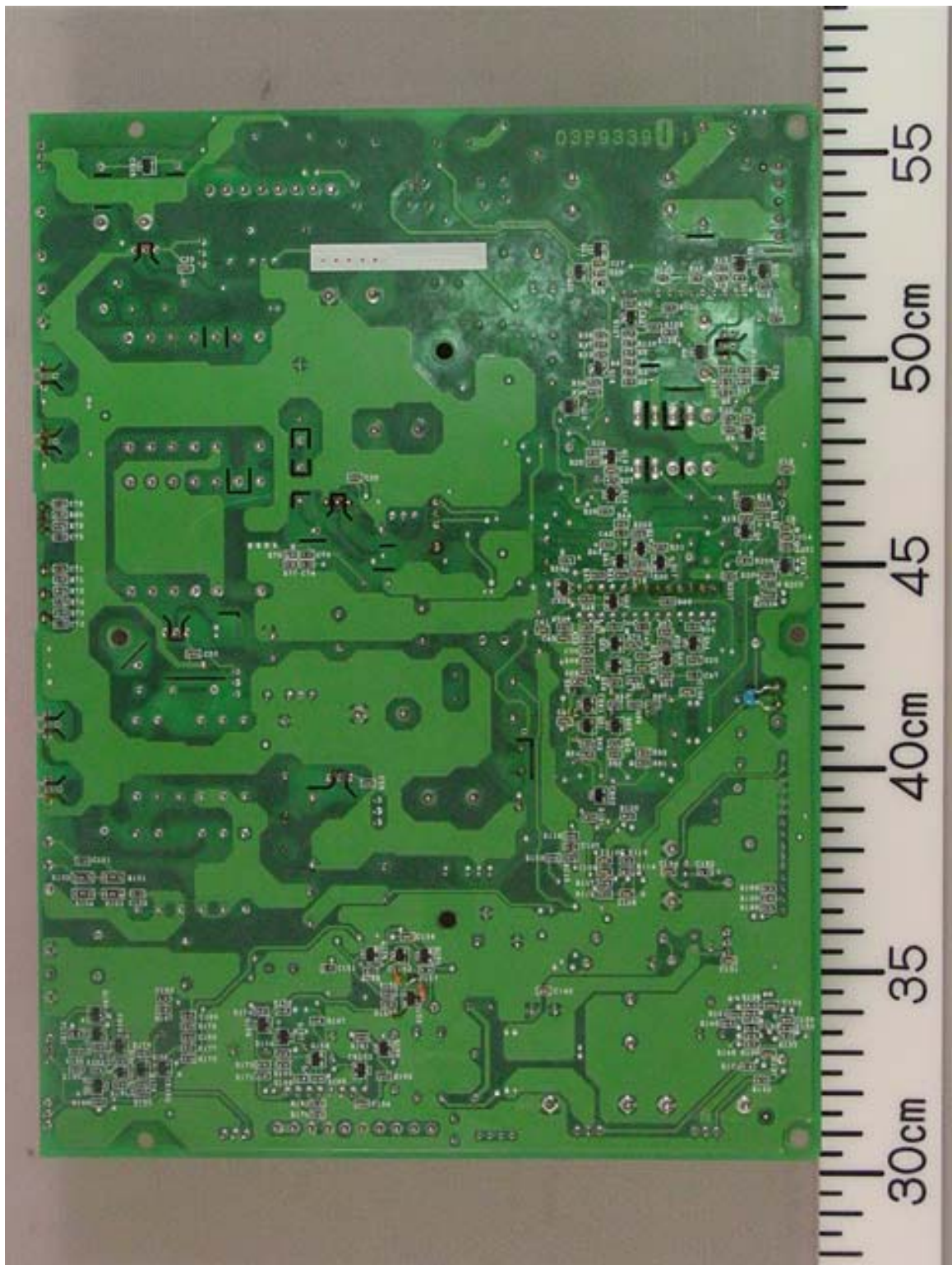
2.11 AC FIL Board 03P9341 Front side



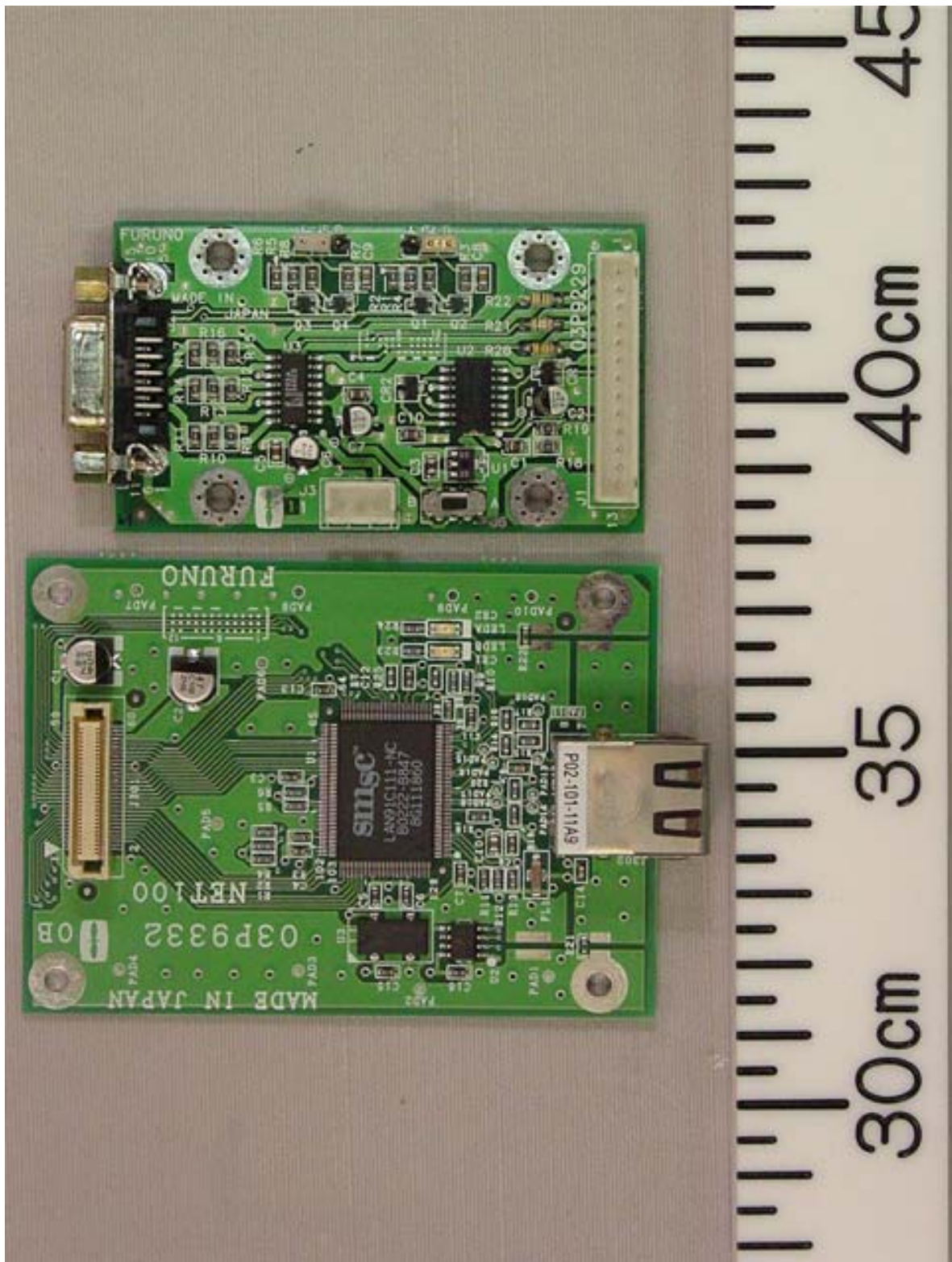
2.12 AC PWR Board 03P9339 Front side



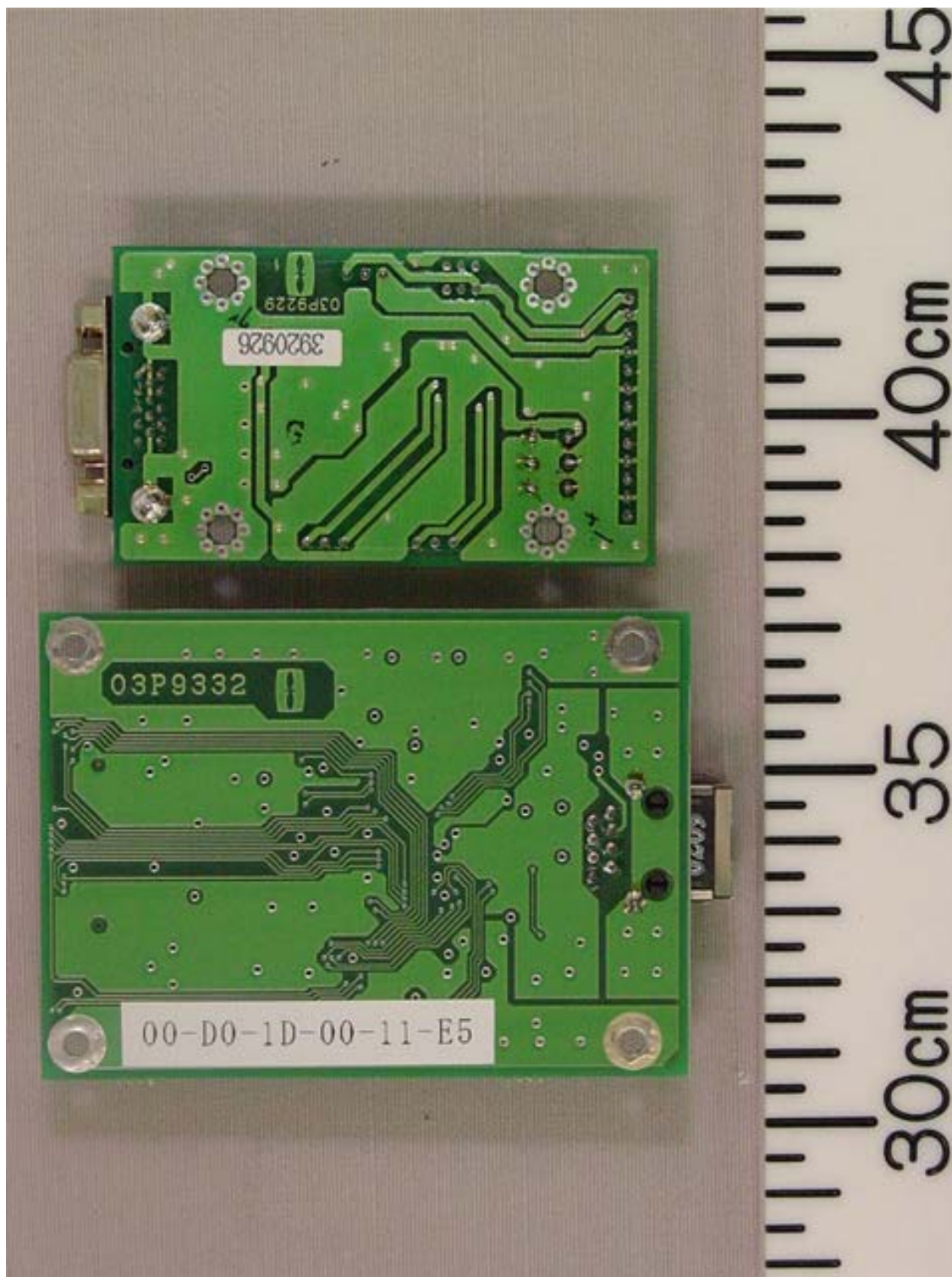
2.13 AC PWR Board 03P9339 Rear side



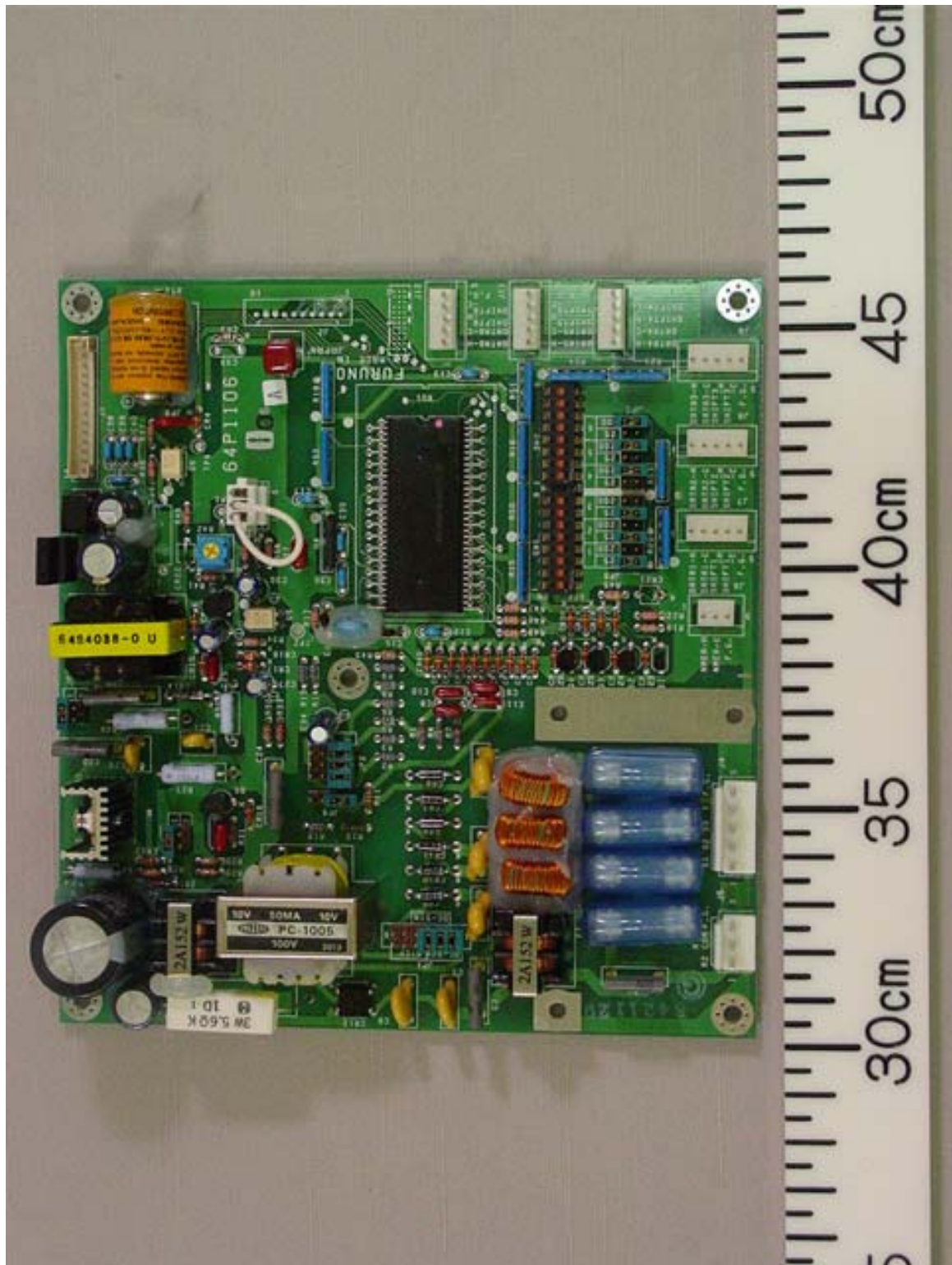
2.14 NET 03P9332 (lower) and RGB Buffer 03P9229 (upper) Boards Front side



2.15 NET 03P9332 (lower) and RGB Buffer 03P9229 (upper) Boards Rear side

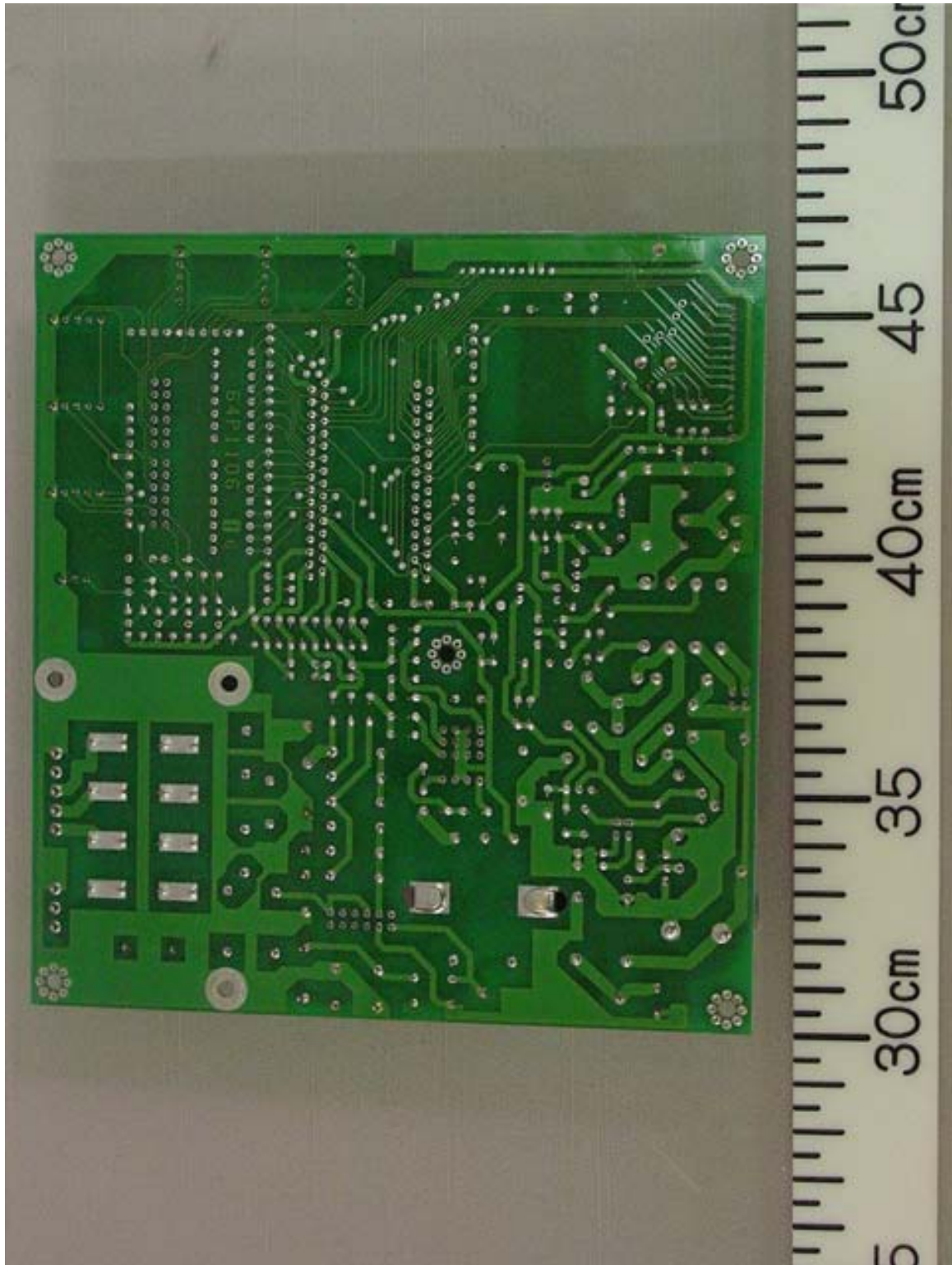


2.16 GC-10 Board 16P1106 Front side

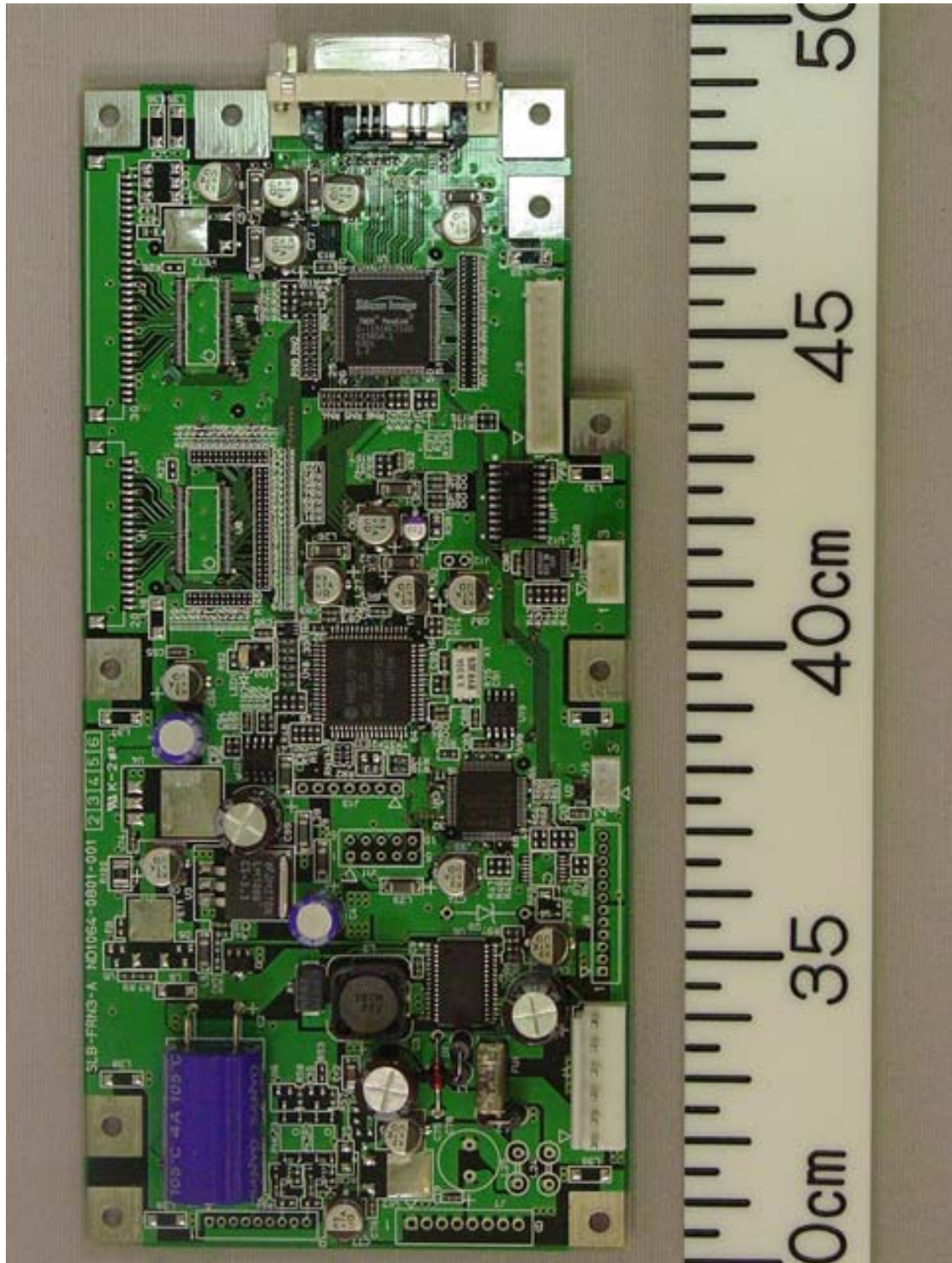




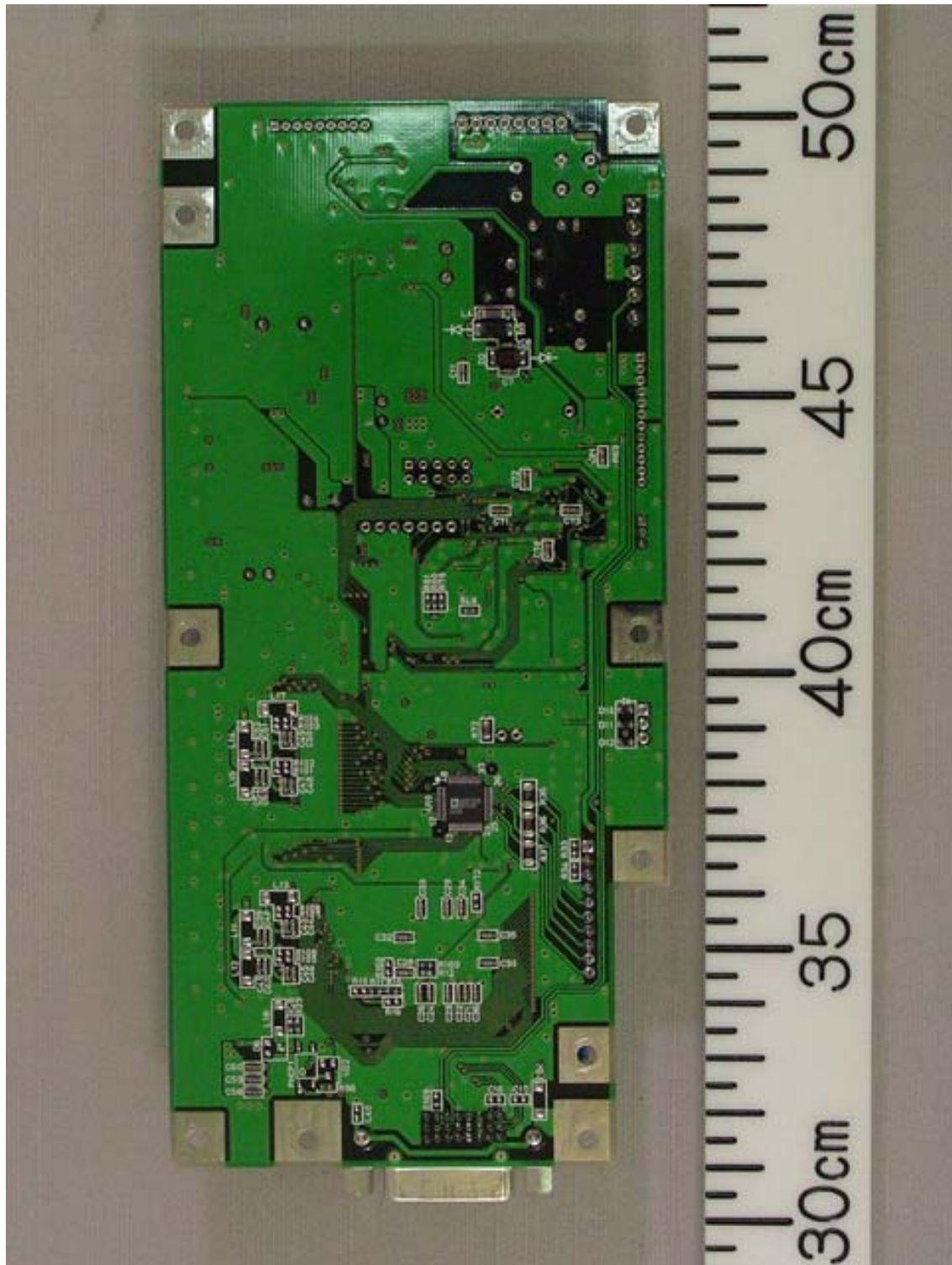
2.17 GC-10 Board 16P1106 Rear side



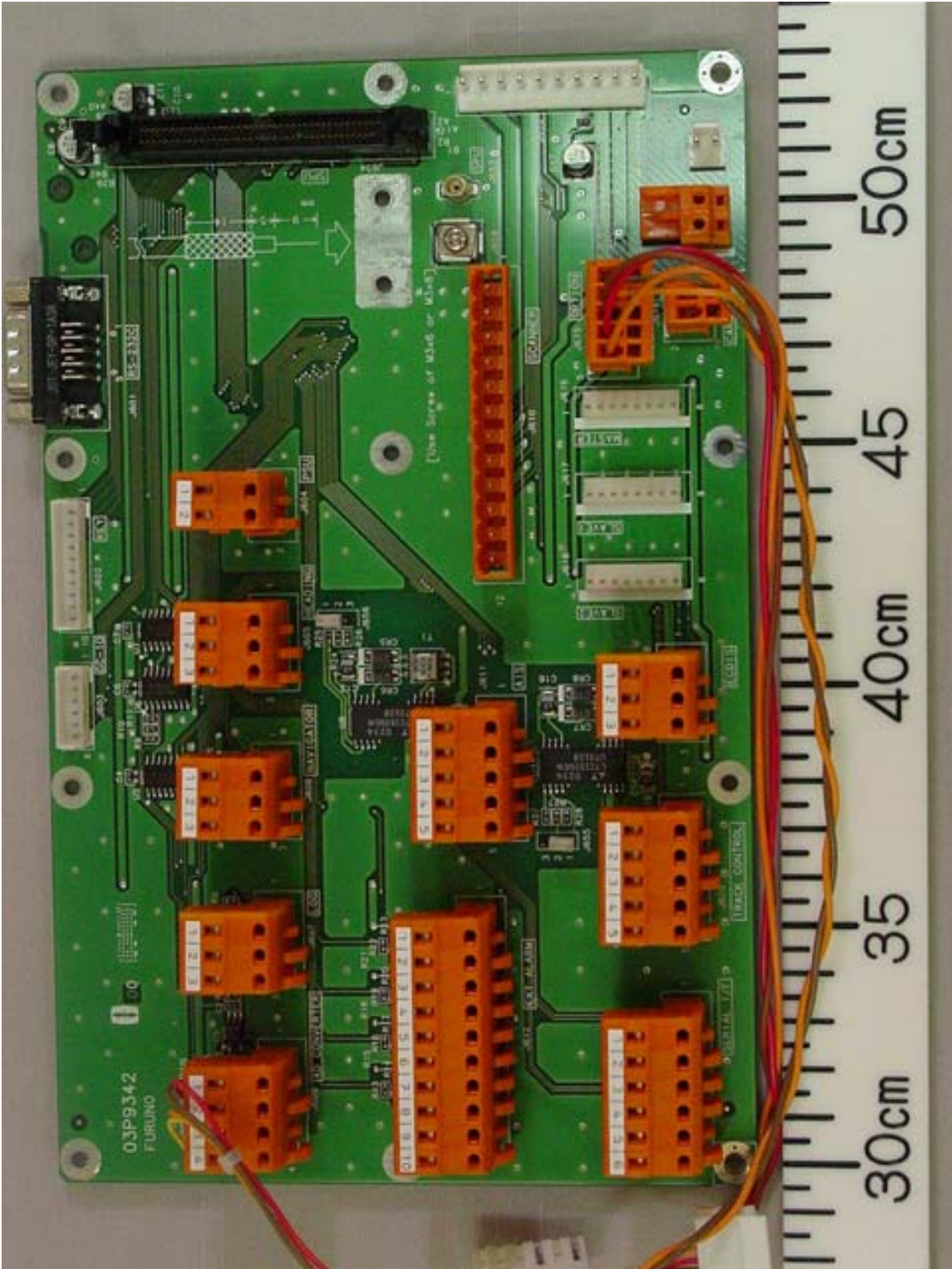
2.18 DVI I/F Board SLB FRN3-A Front side



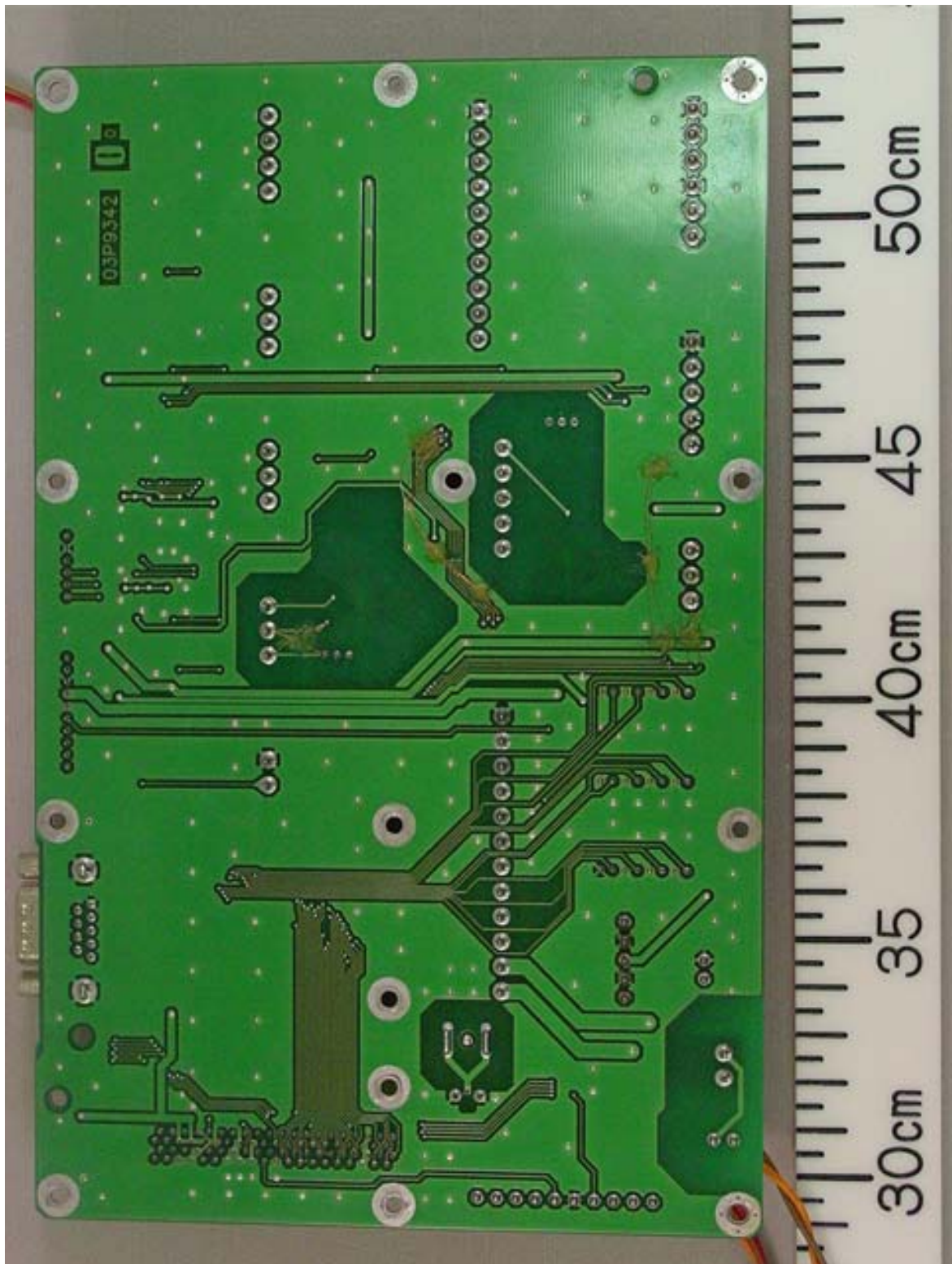
2.19 DVI I/F Board SLB FRN3-A Rear side



2.20 TB Board 03P9342 Front side



2.21 TB Board 03P9342 Rear side



## 2.22 Name Plate

