

Attachment E Photographs of EUT MODEL 1715 (Transceiver type RTR-076)

1 Antenna Unit RSB-0095 (including Transceiver RTR-076)

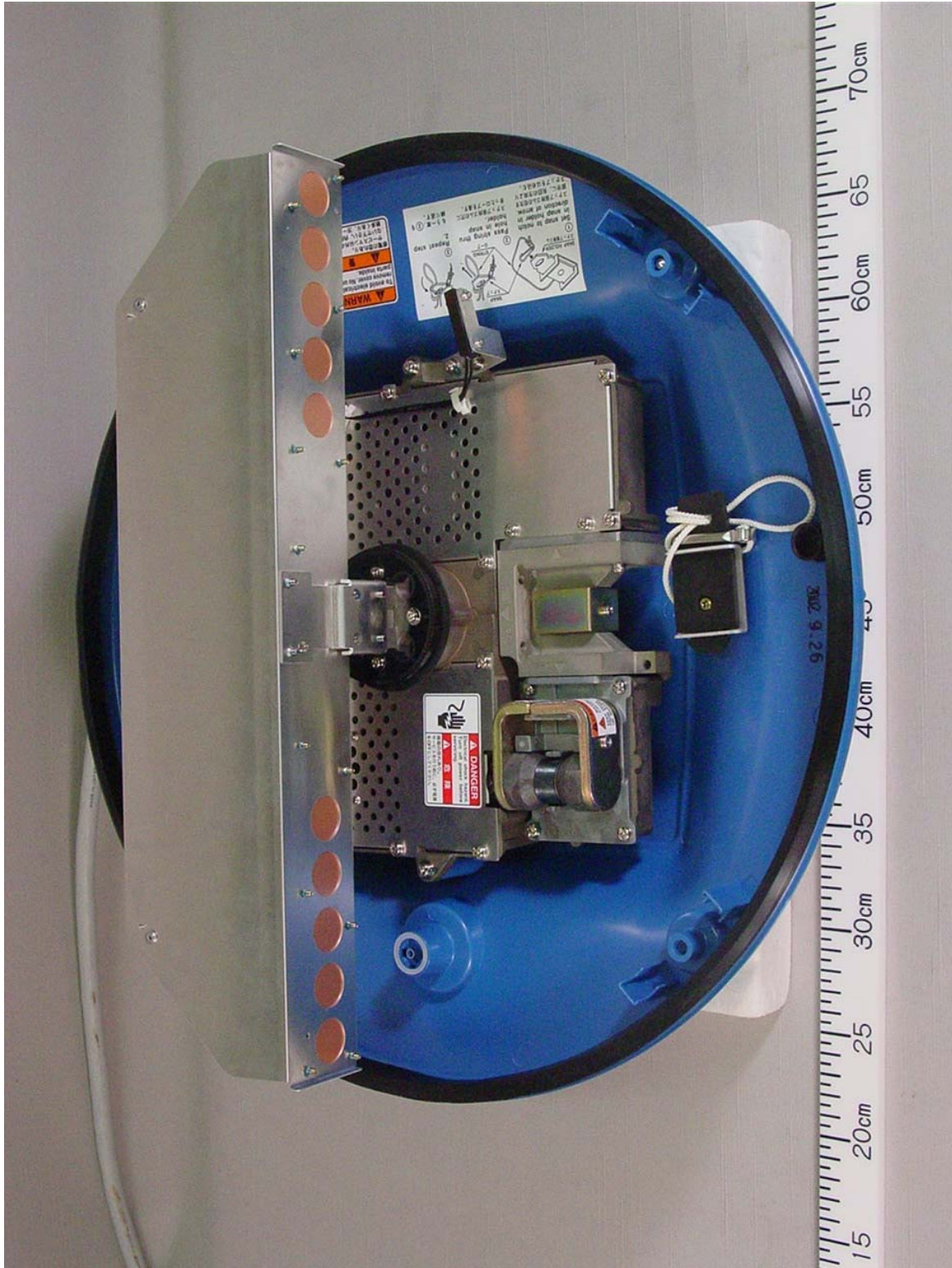
1.1 Outside View (showing Name Plate.)



1.2 Inside View (with Top cover removed, Showing Antenna Radiator and Transceiver Module (RTR-076))



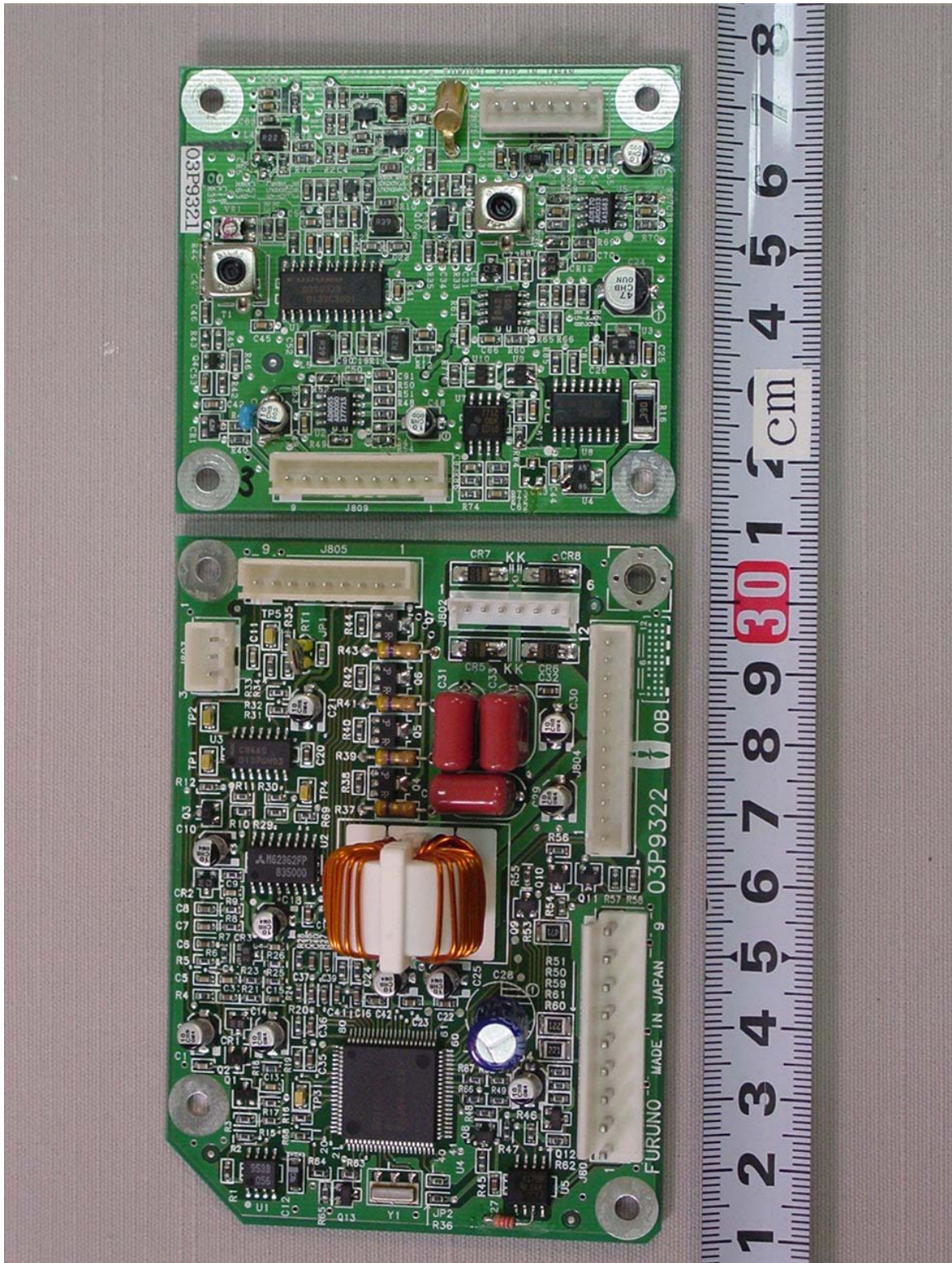
1.3 Inside View (with Top cover removed, Showing Antenna Radiator and Transceiver Module (RTR-076))



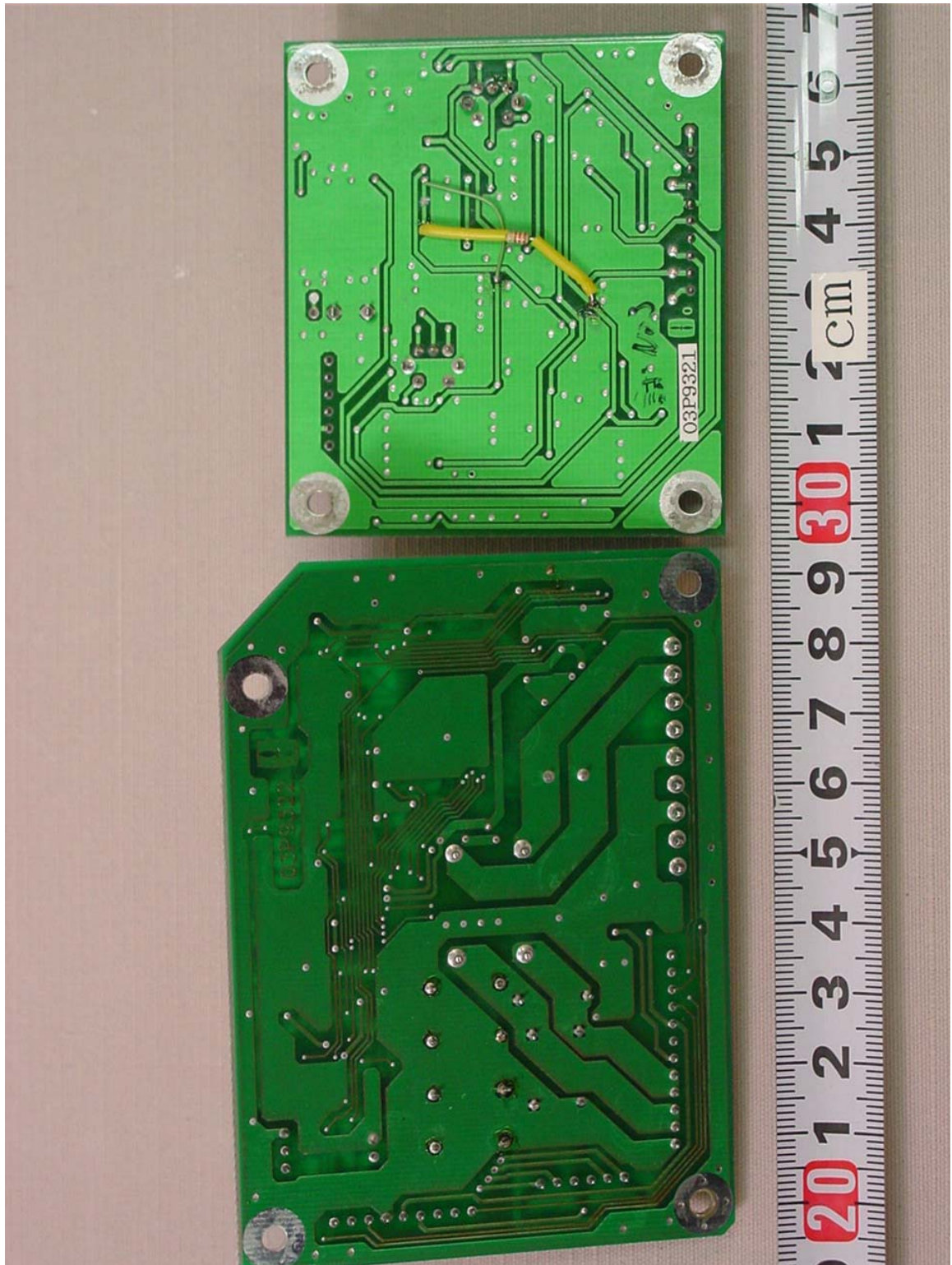
1.4 Inside View (with shield-covers removed, showing Magnetron (lower right), MIC (Upper right), MD Board 03P9270 (lower left), Scanner Motor (center), IF Board 03P9321 (upper center), and INT Board 03P9322 (upper left))



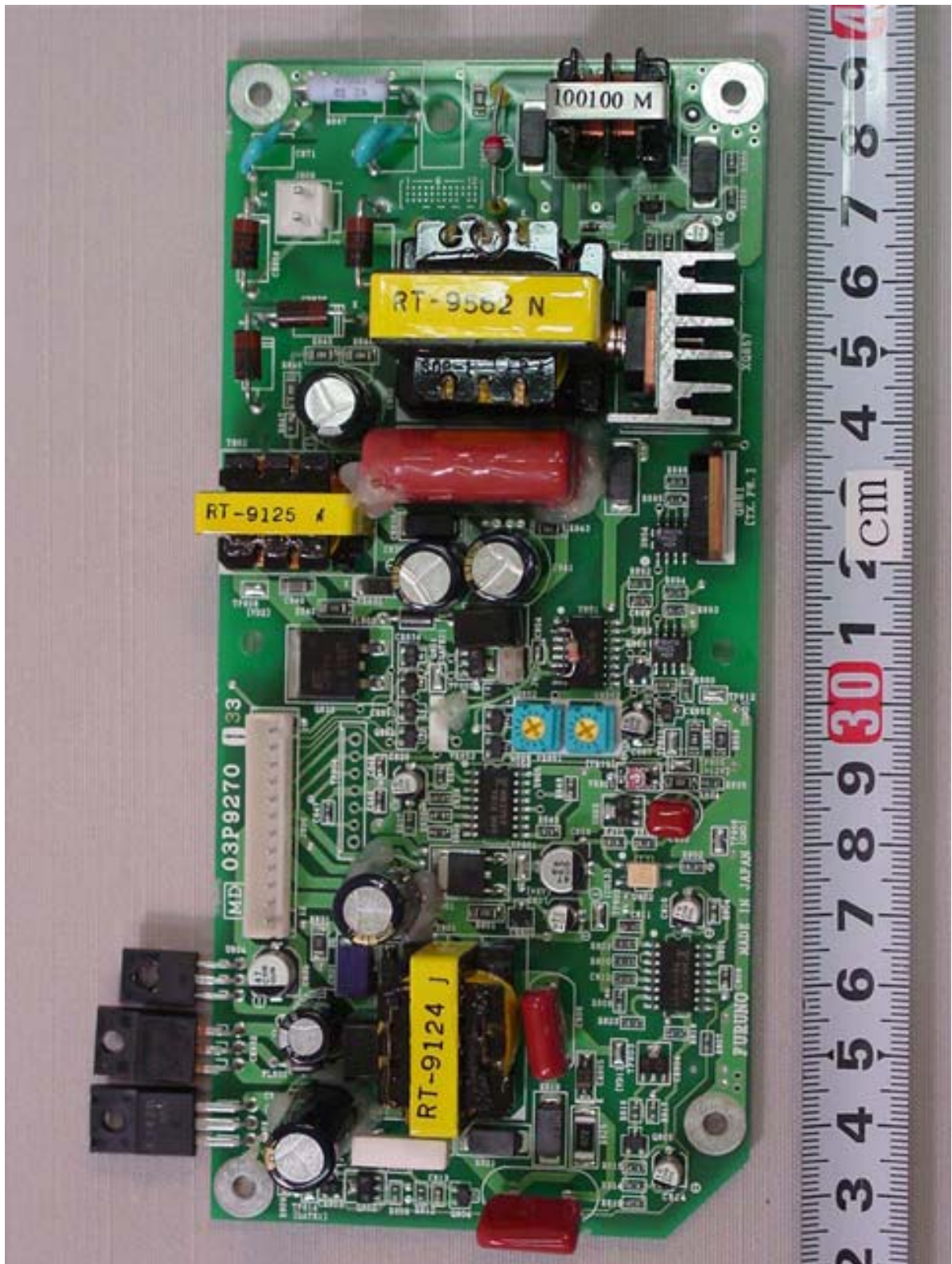
1.5 IF 03P9321 (upper) and INT 03P9322 (lower) Boards Front side



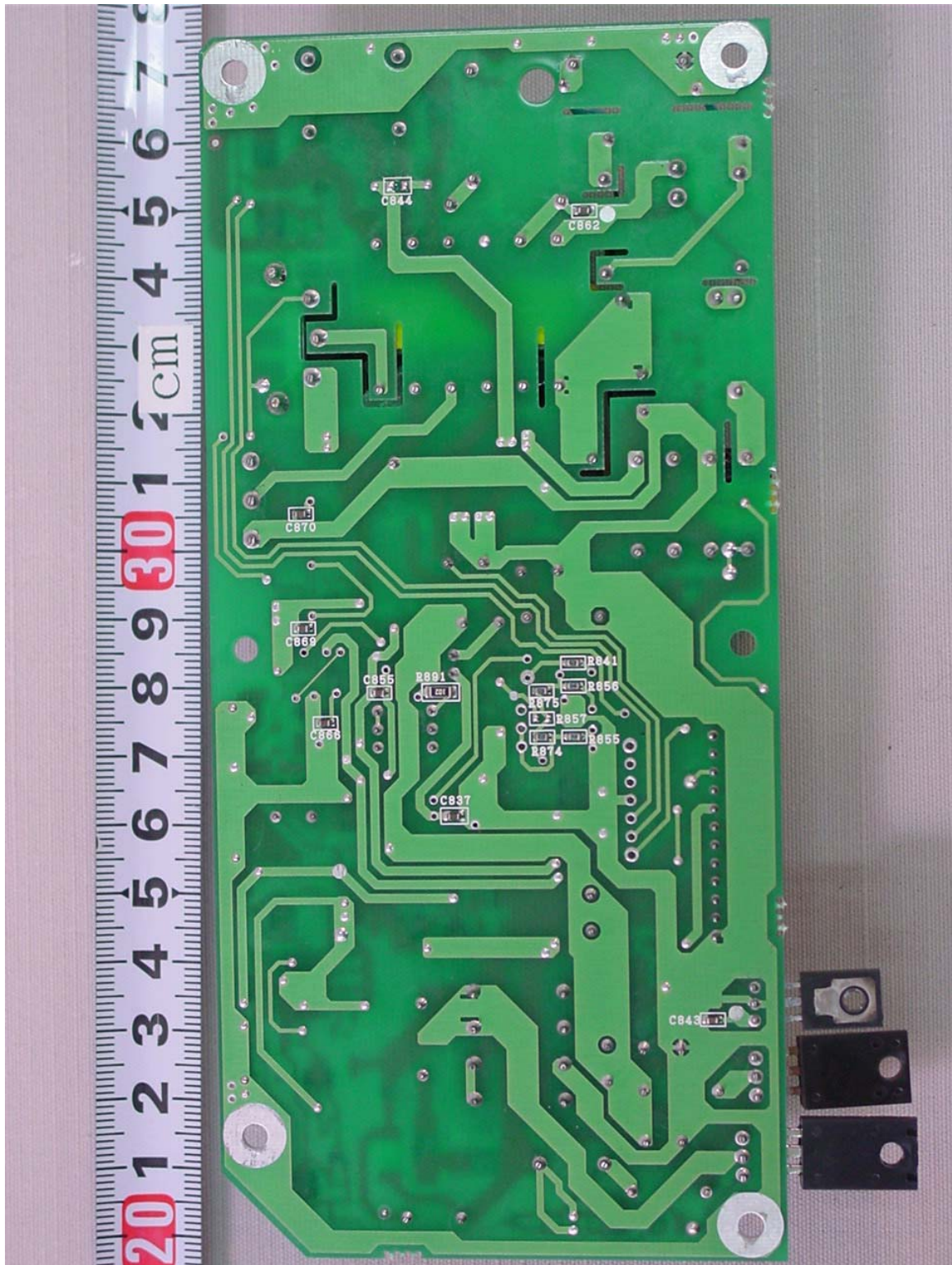
1.6 IF 03P9321 (upper) and INT 03P9322 (lower) Boards Rear side



1.7 MD Board 03P9270 Front side



1.8 MD Board 03P9270 Rear side



1.9 Name Plate



2 Display Unit RDP-142

2.1 Front View



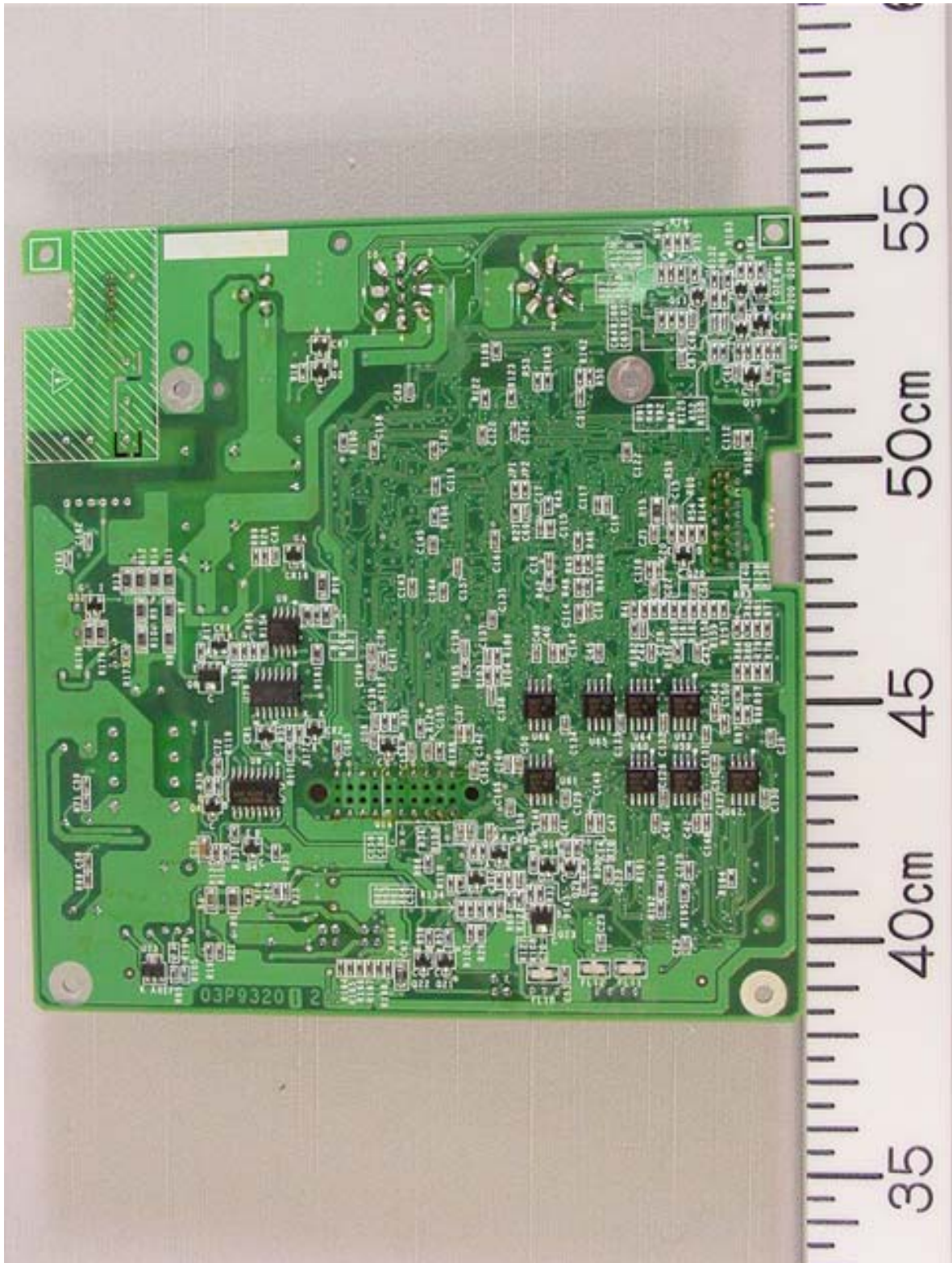
2.2 Rear side (showing Name Plate and Warning Label)



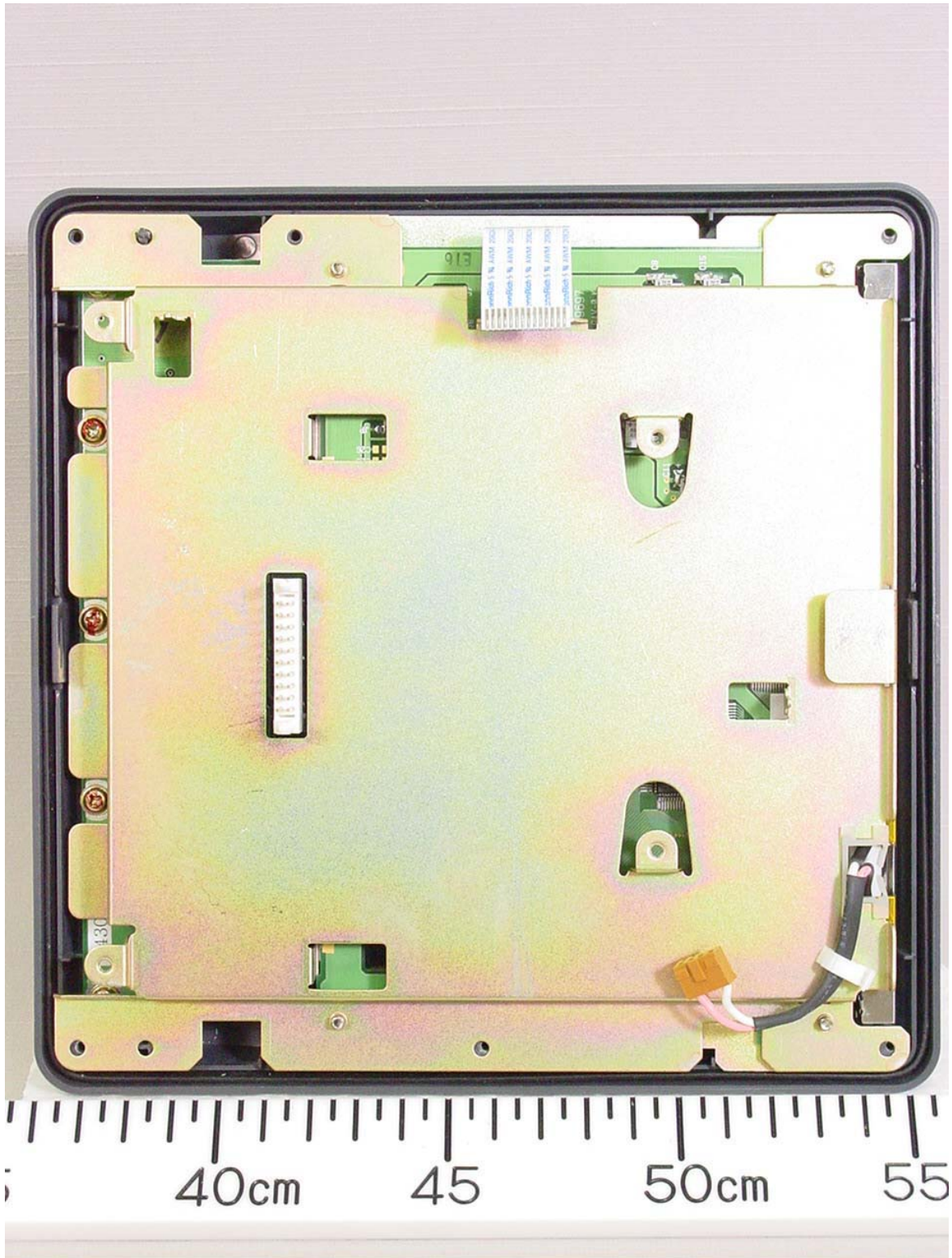
2.3 Inside View (showing DU Board 03P9320 Front side)



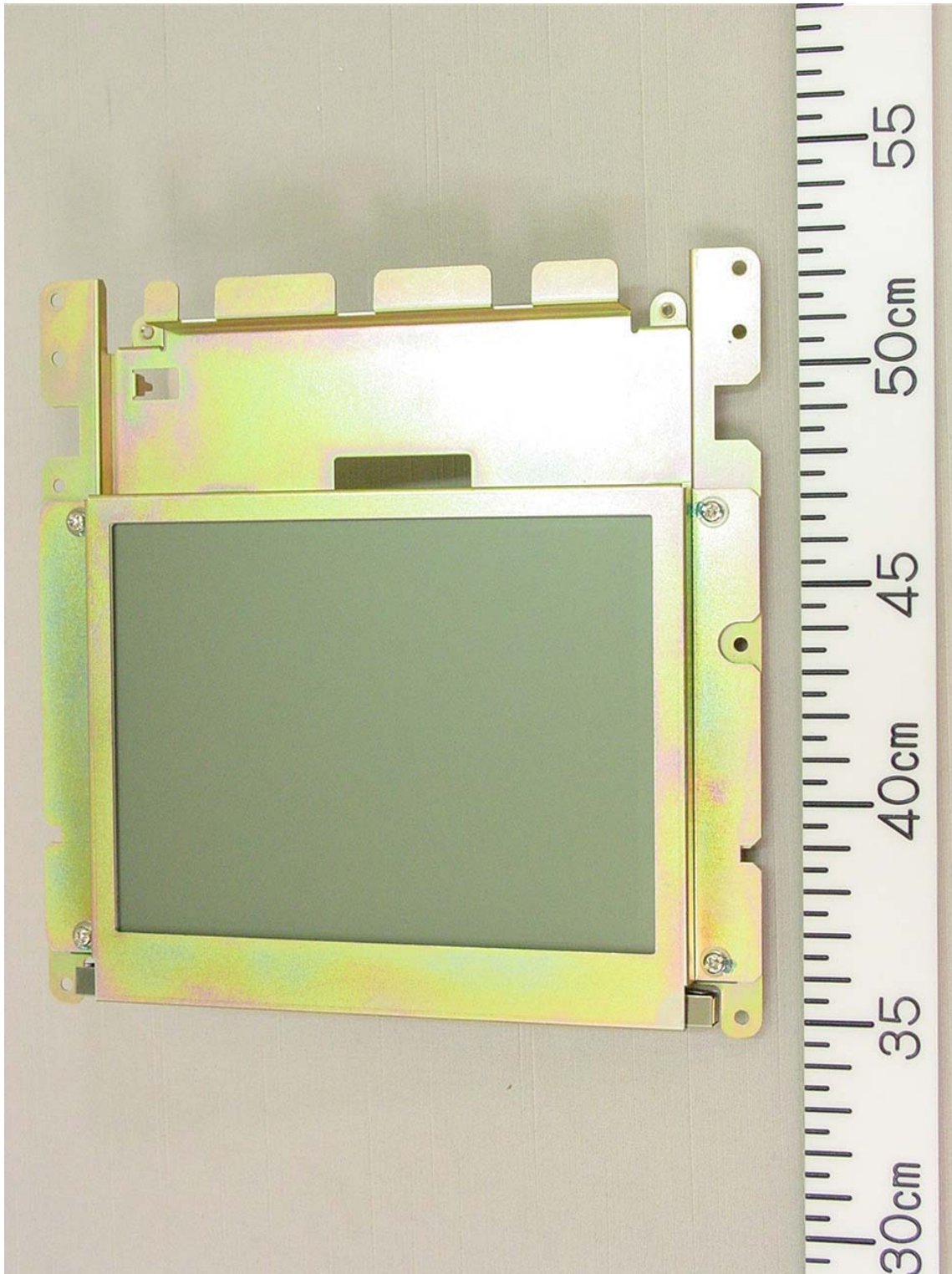
2.4 DU Board 03P9320 Rear side



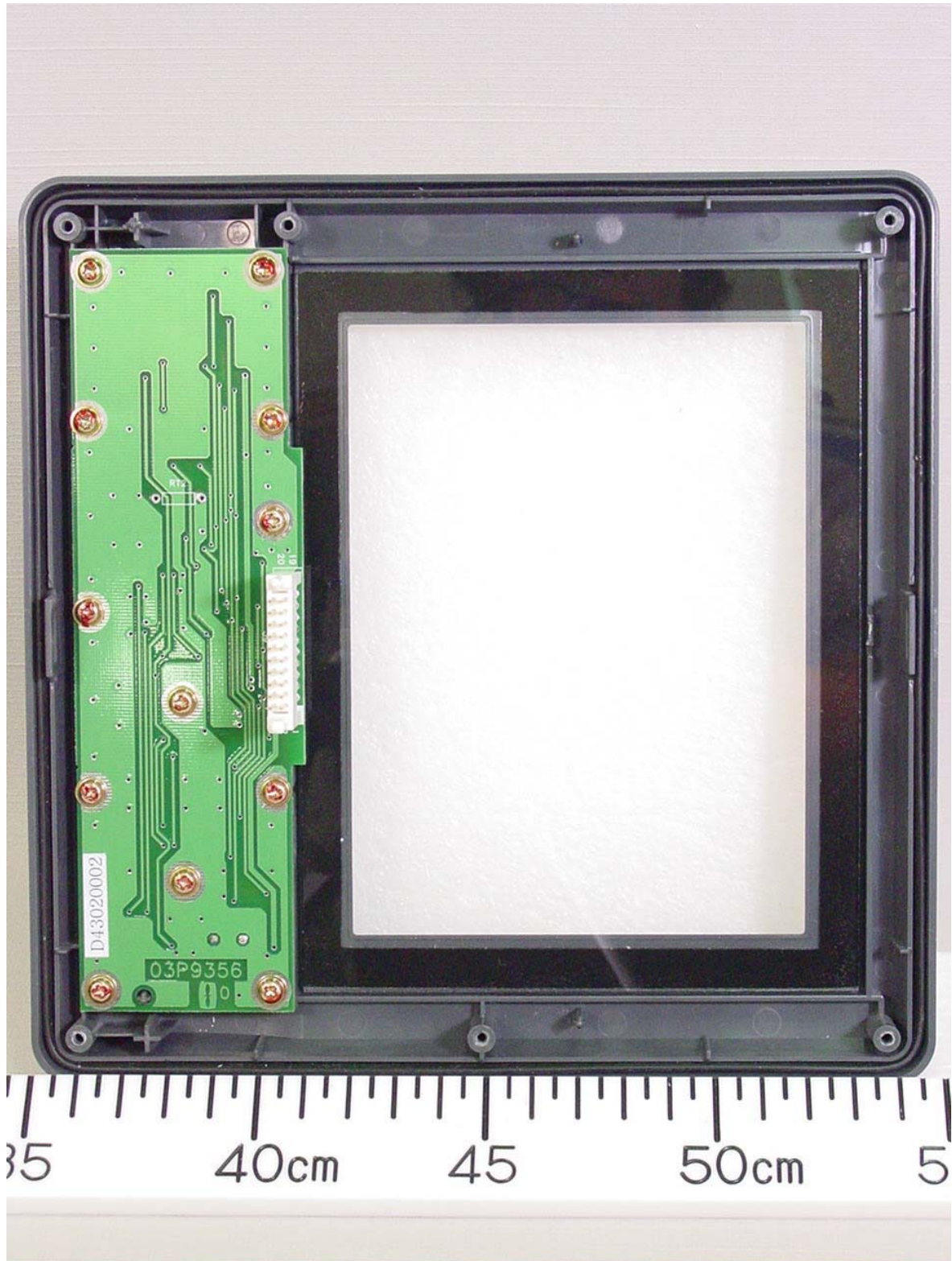
2.5 Inside View (with DU Board removed)



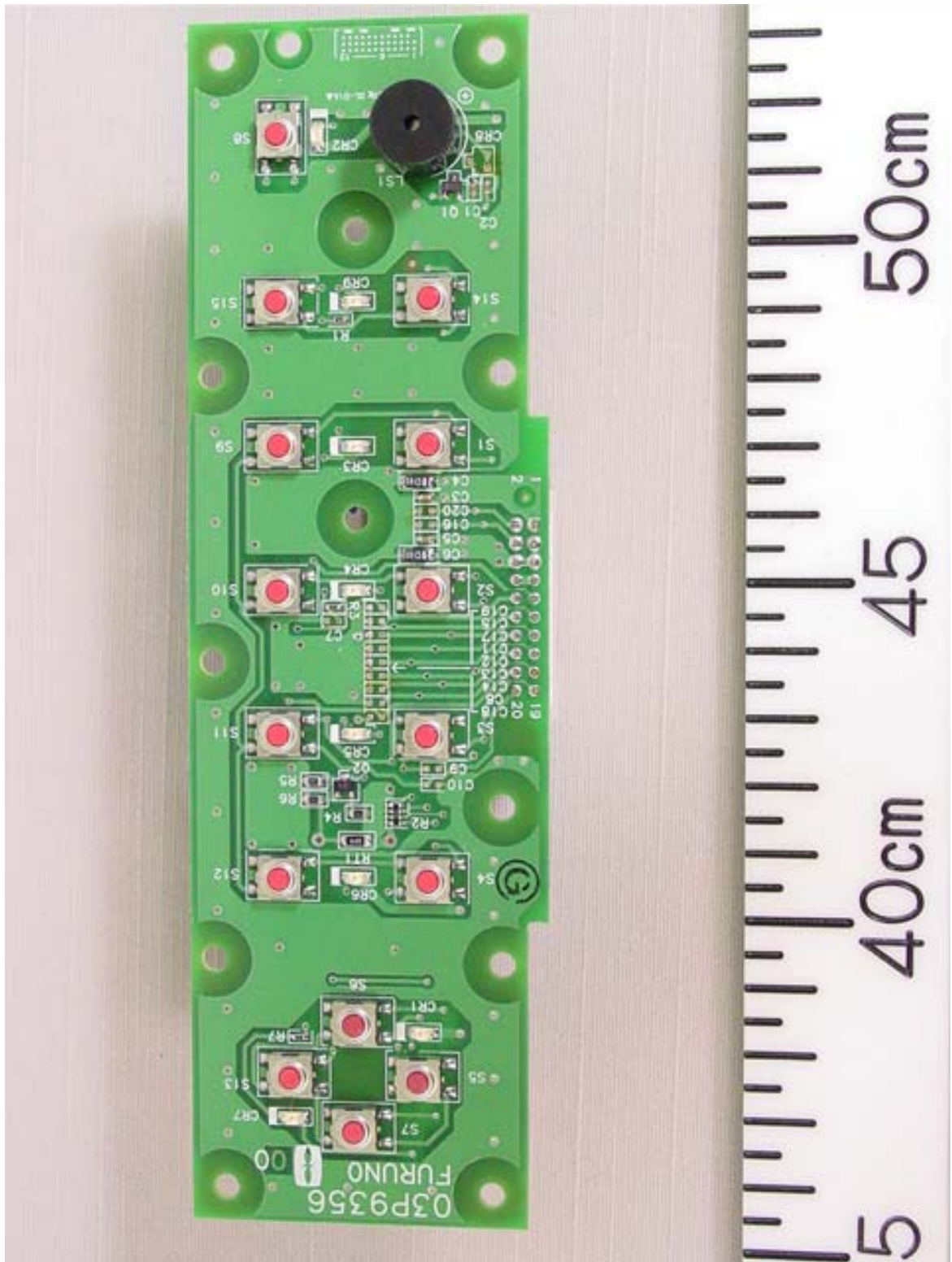
2.6 Inside View (showing LCD Module)



2.7 Inside View (showing Back of Front panel and PNL Board 03P9356 Rear side)



2.8 PNL Board 03P9356 Front side



2.9 Inside View (showing Back of Front Panel with PNL Board removed)

