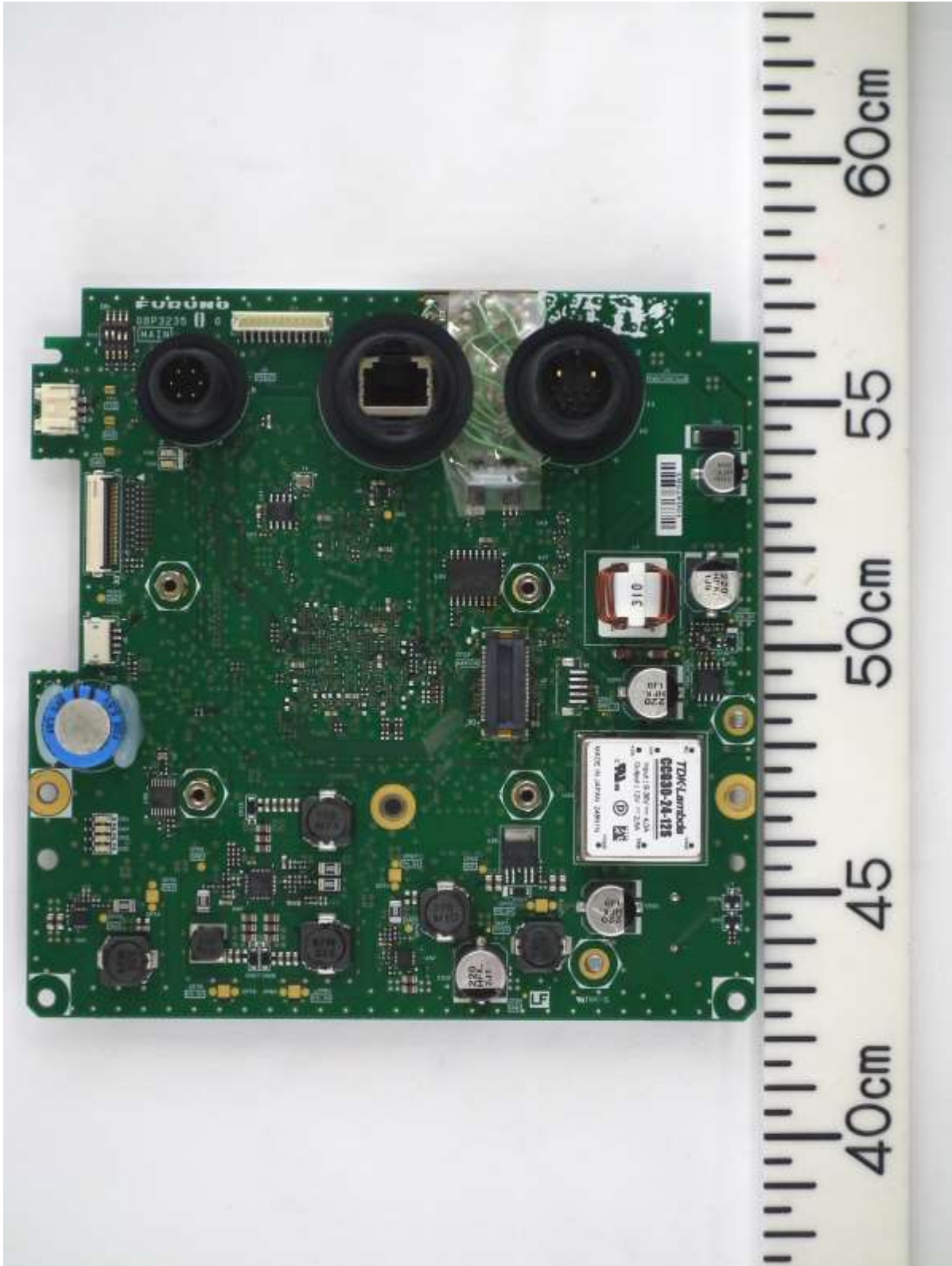


Photographs of NAVTEX, NX-900

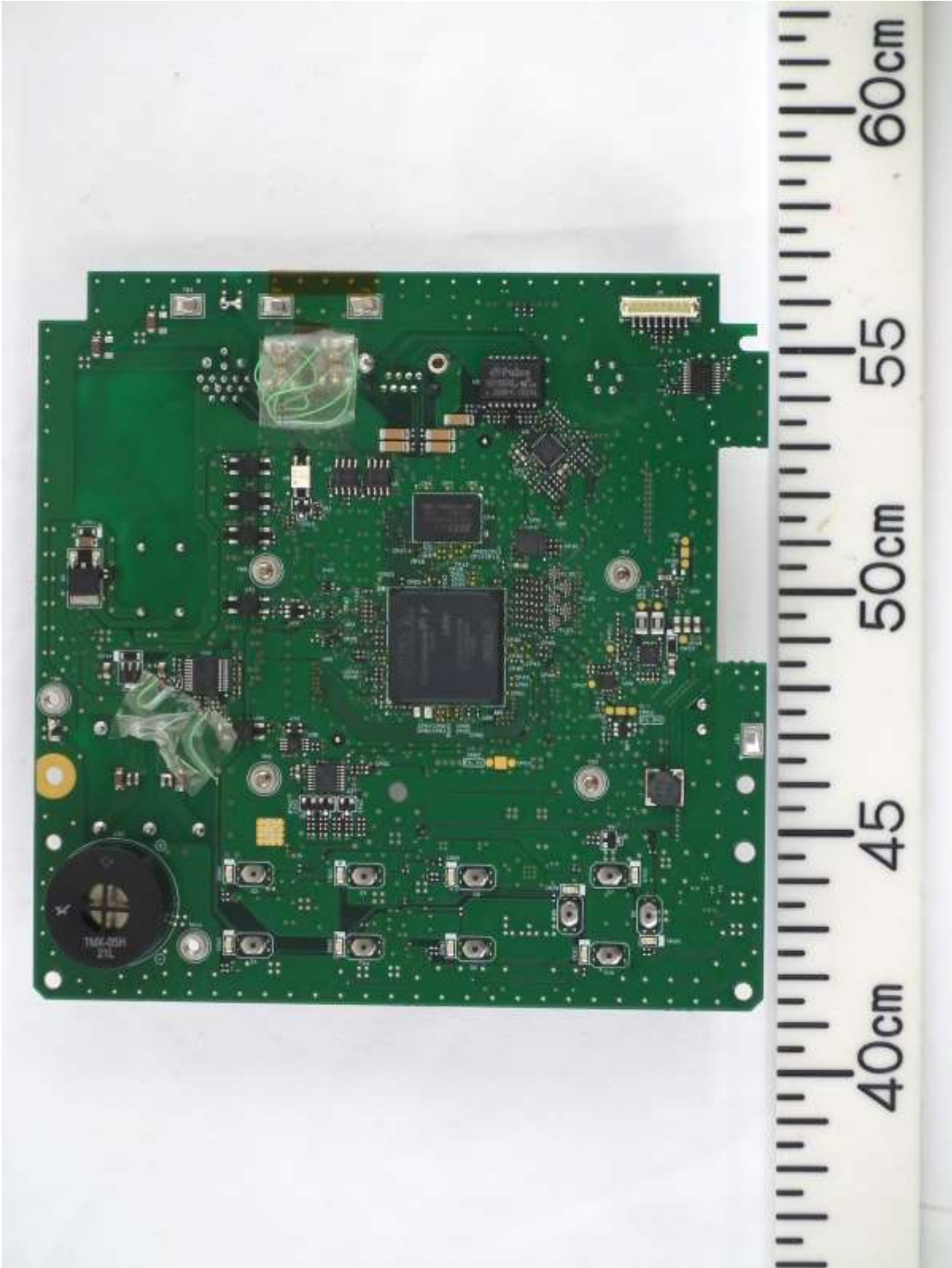
PCB

1 Main Unit (NX-900)

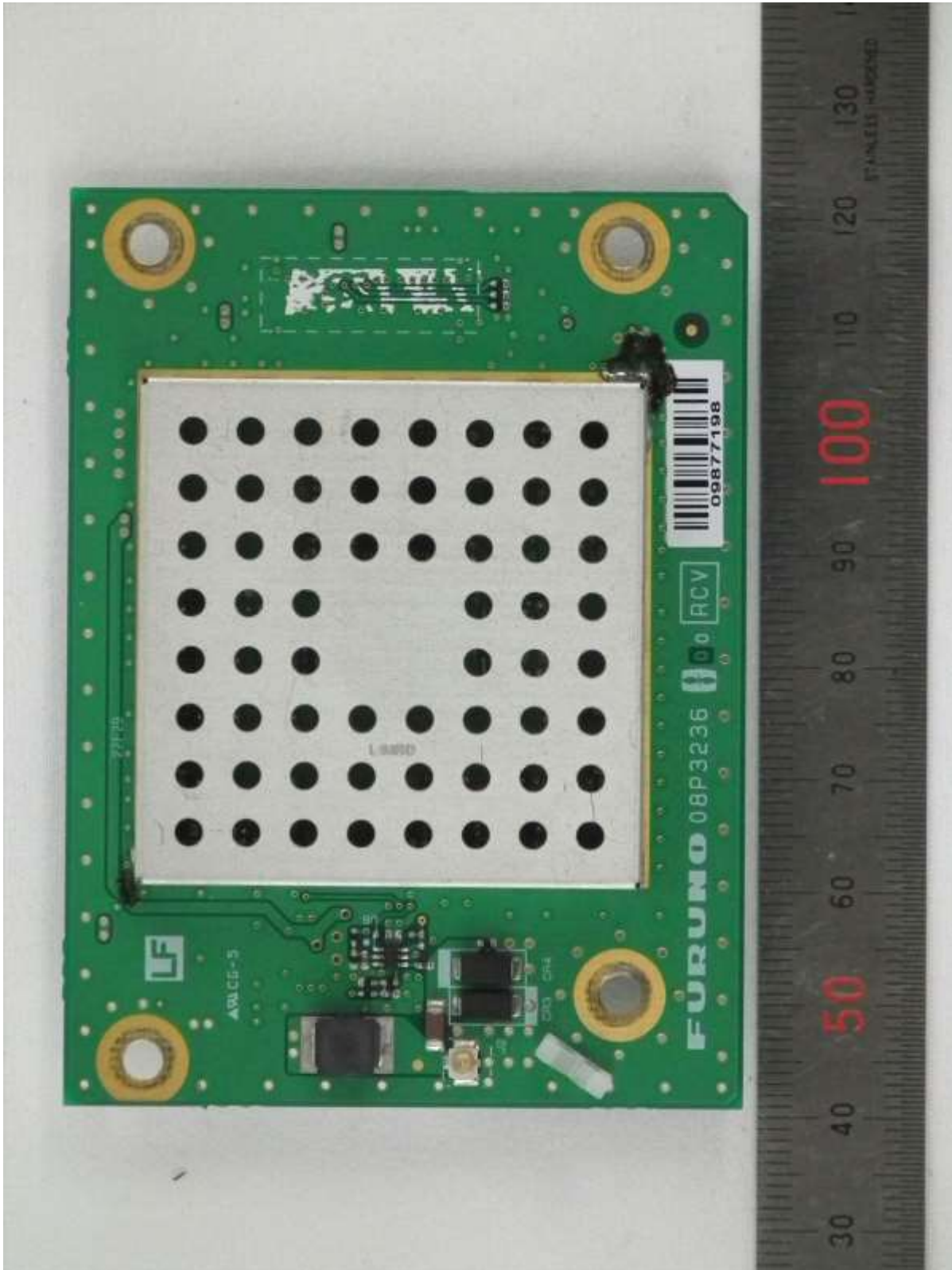
1.1 MAIN board 08P3235, Front side



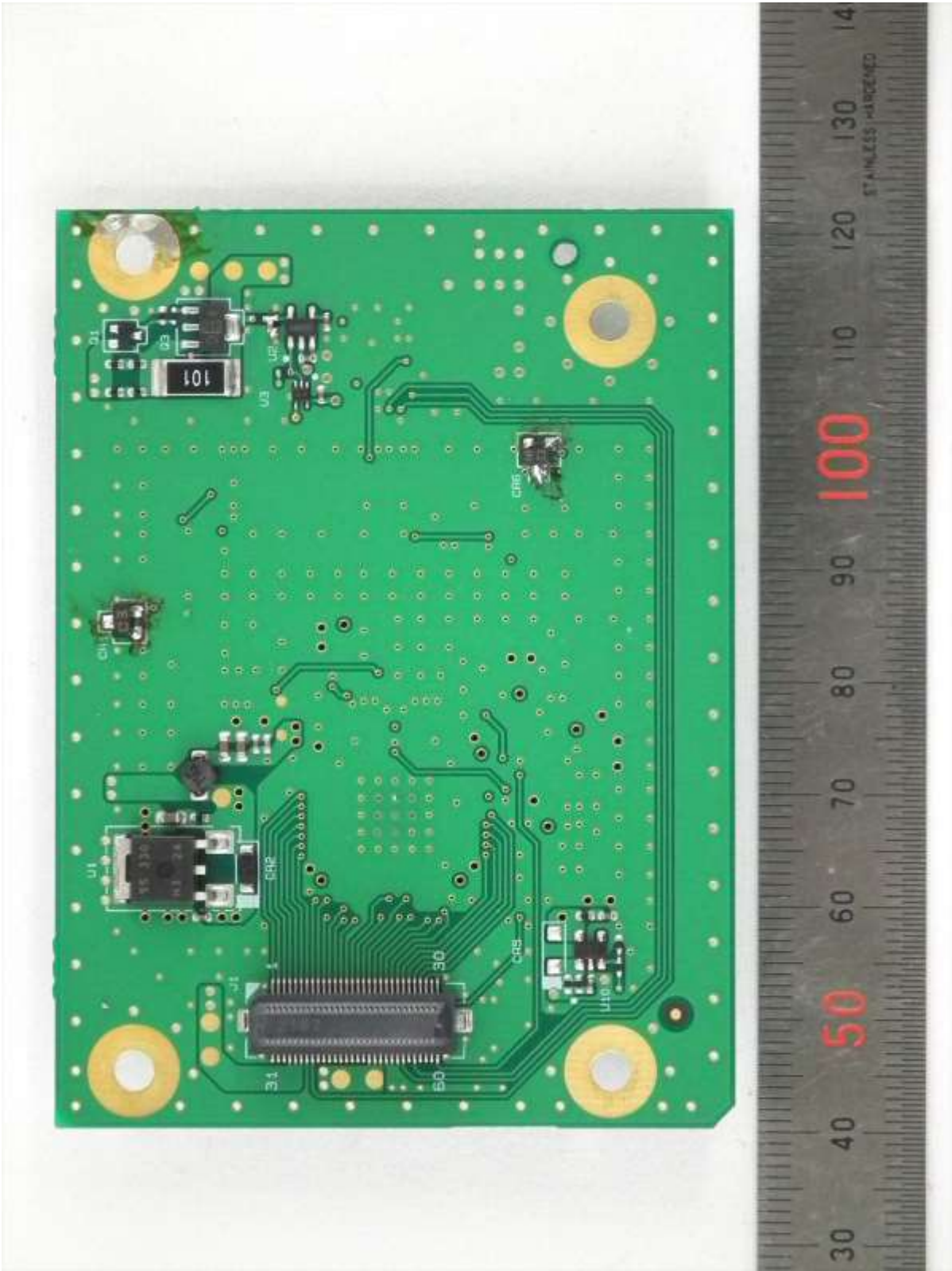
1.2 MAIN board 08P3235, Rear side



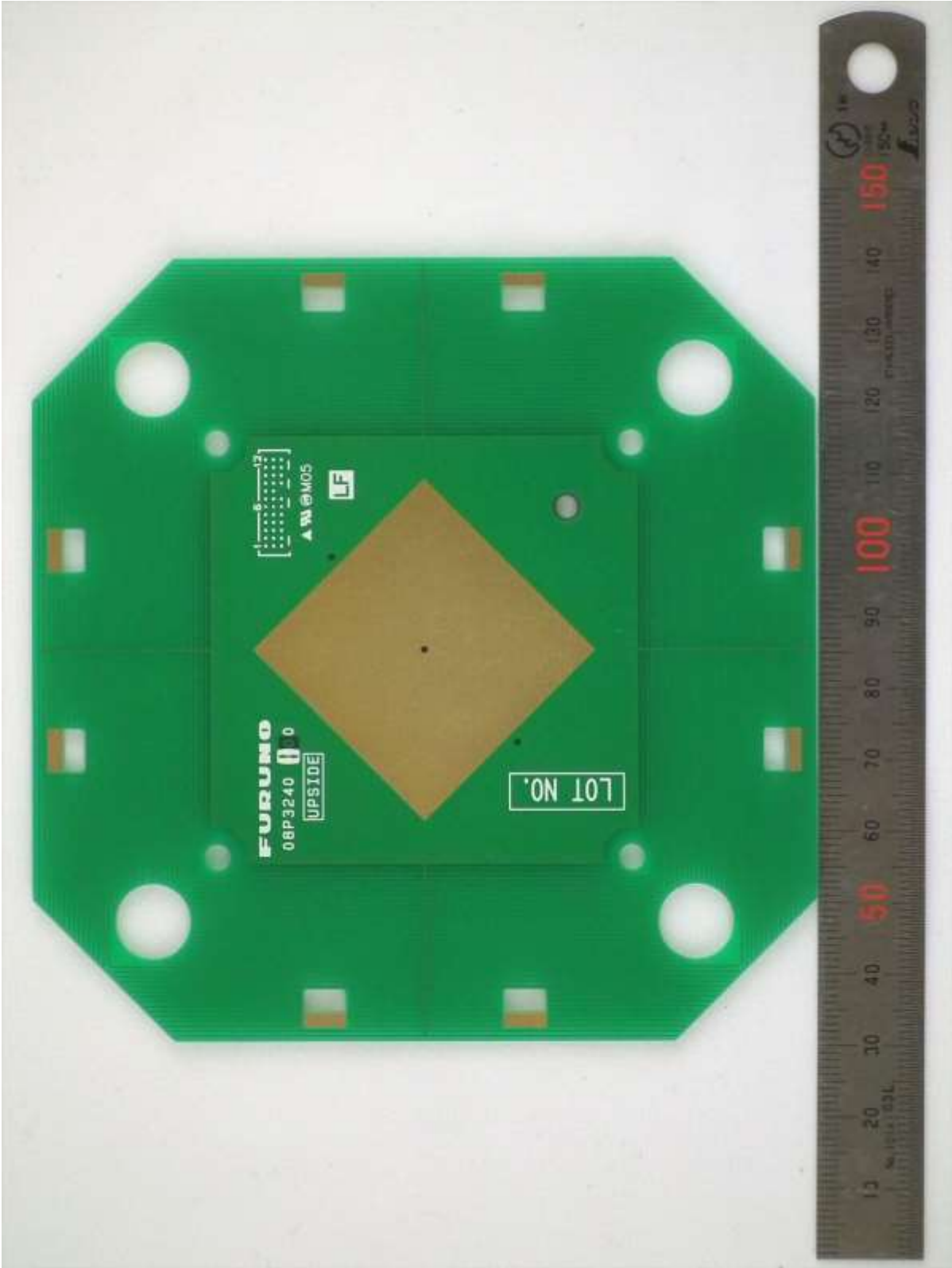
1.3 RCV board 08P3236, Front side



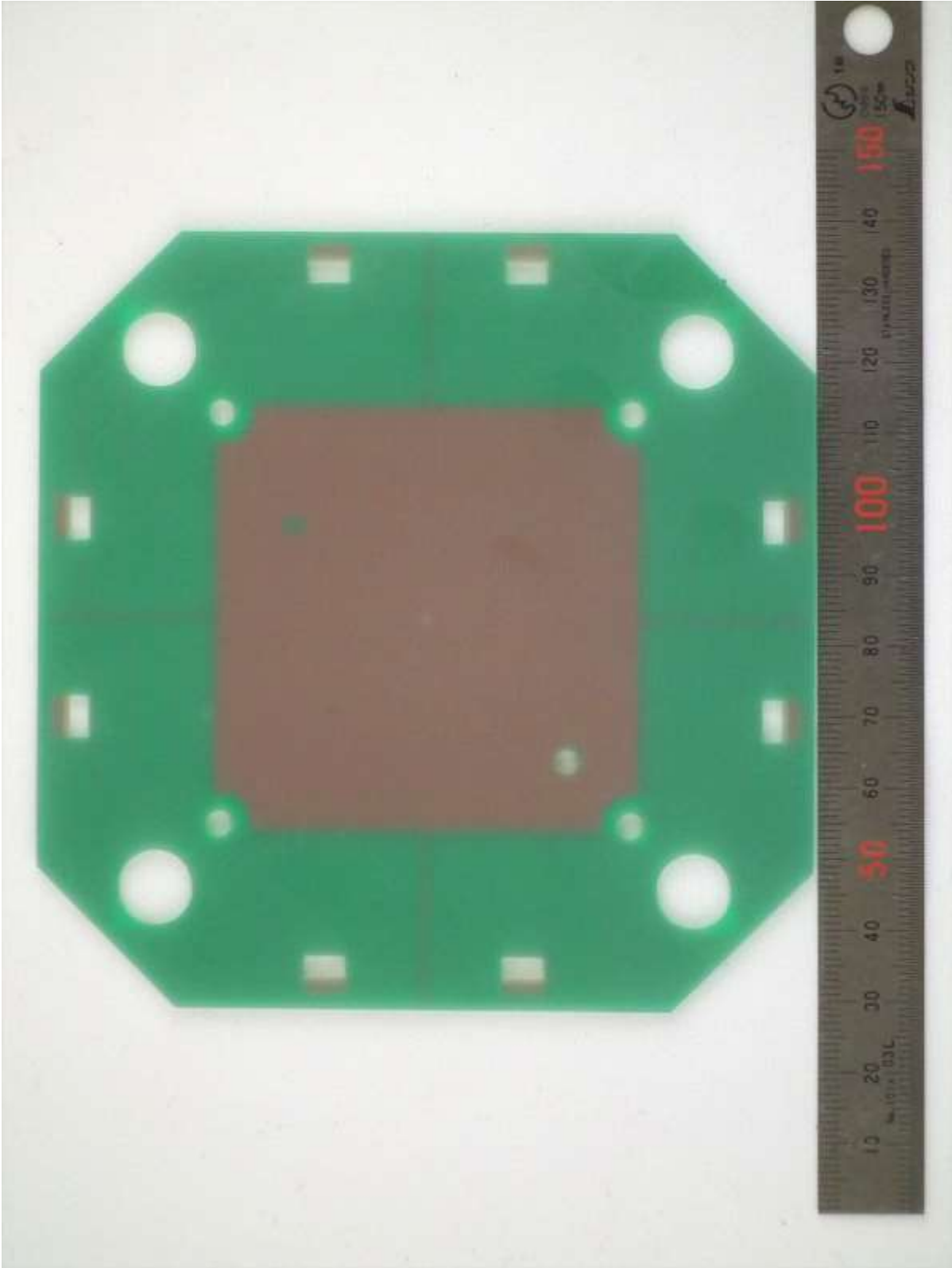
1.4 RCV board 08P3236, Rear side



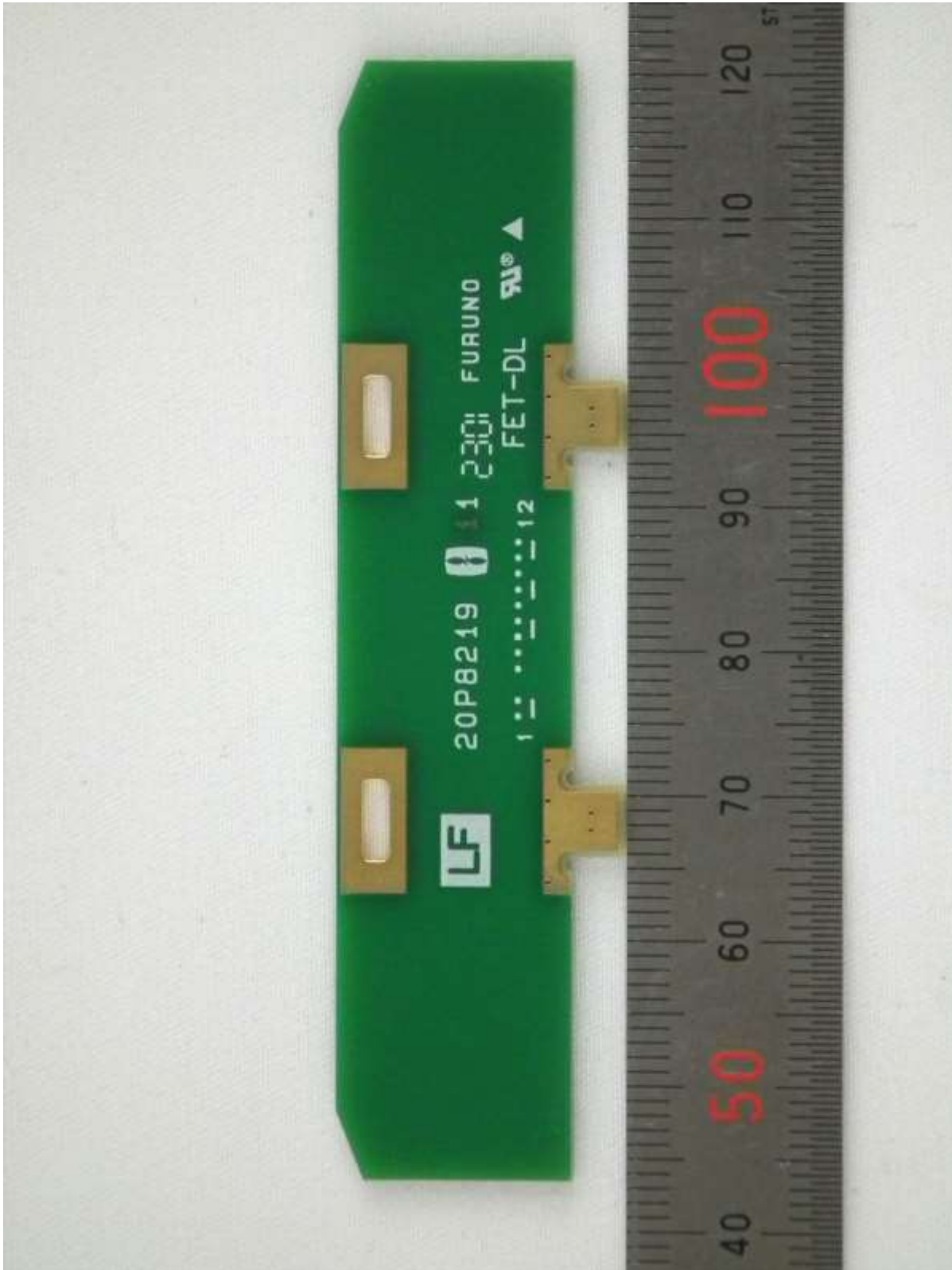
2 Antenna Unit (NX-9HE)
2.1 UPSIDE board 08P3240, Front side



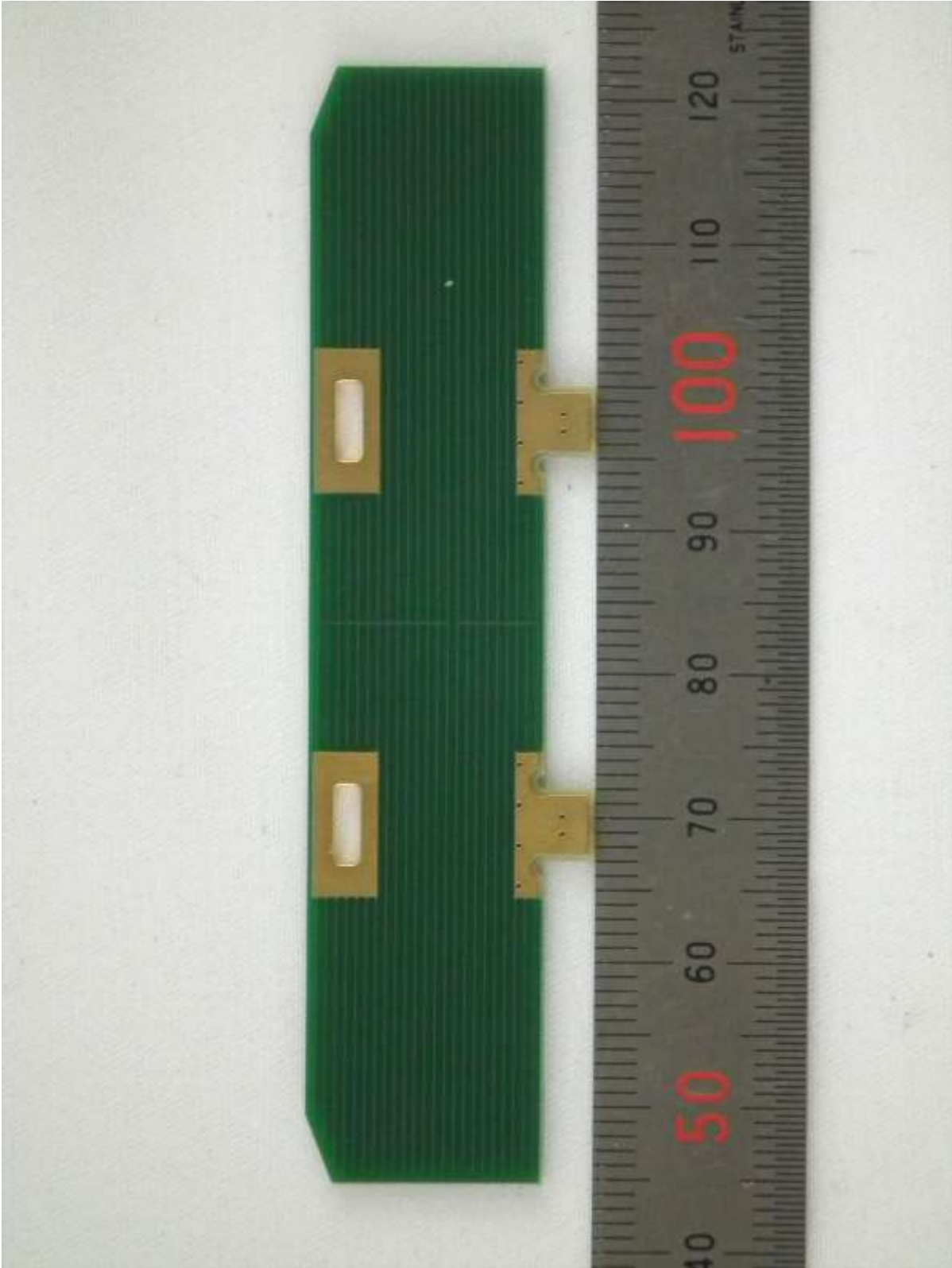
2.2 UPSIDE board 08P3240, Rear side



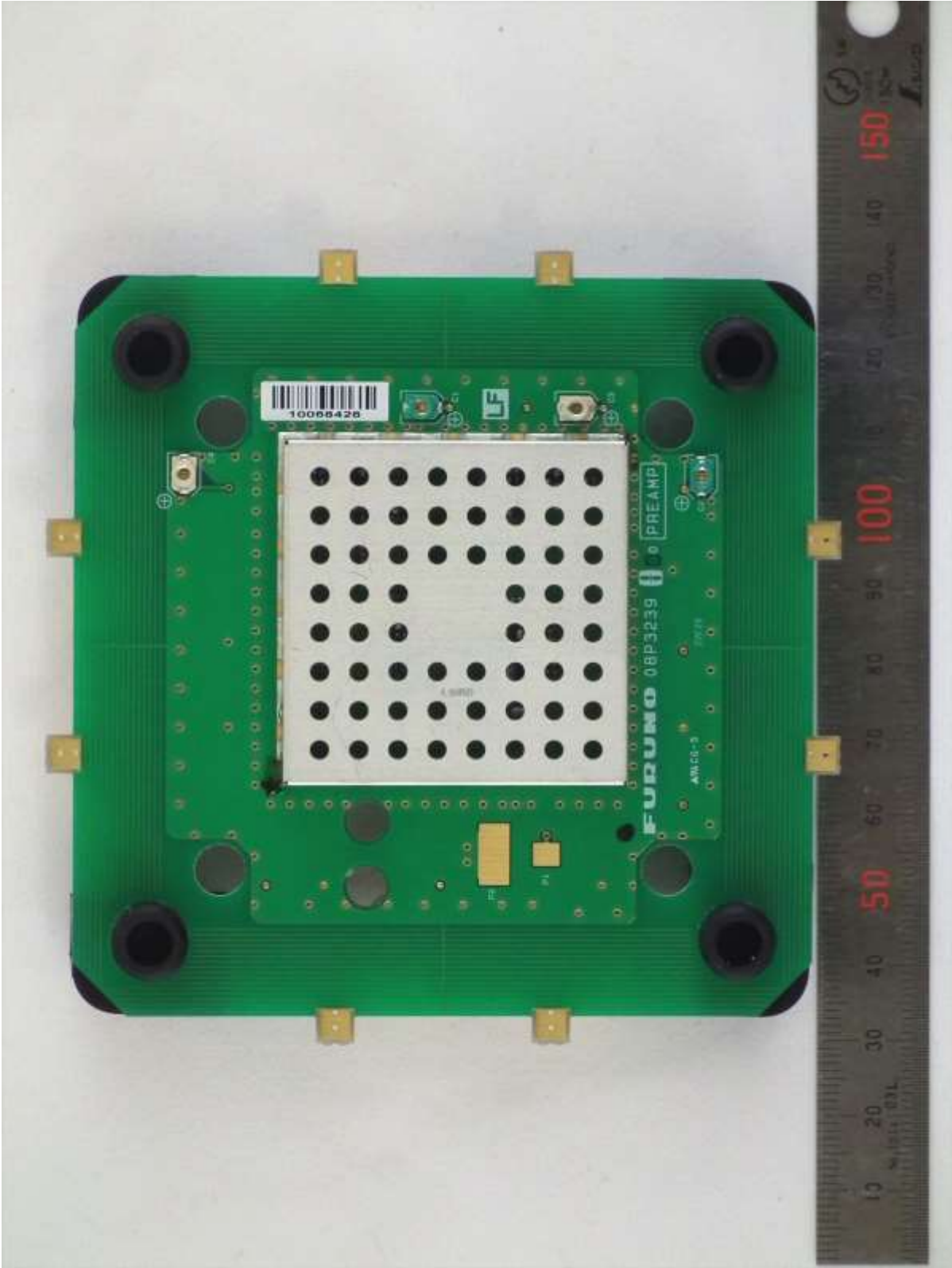
2.3 SIDE board 20P8219, Front side (Four of same circuits are installed.)



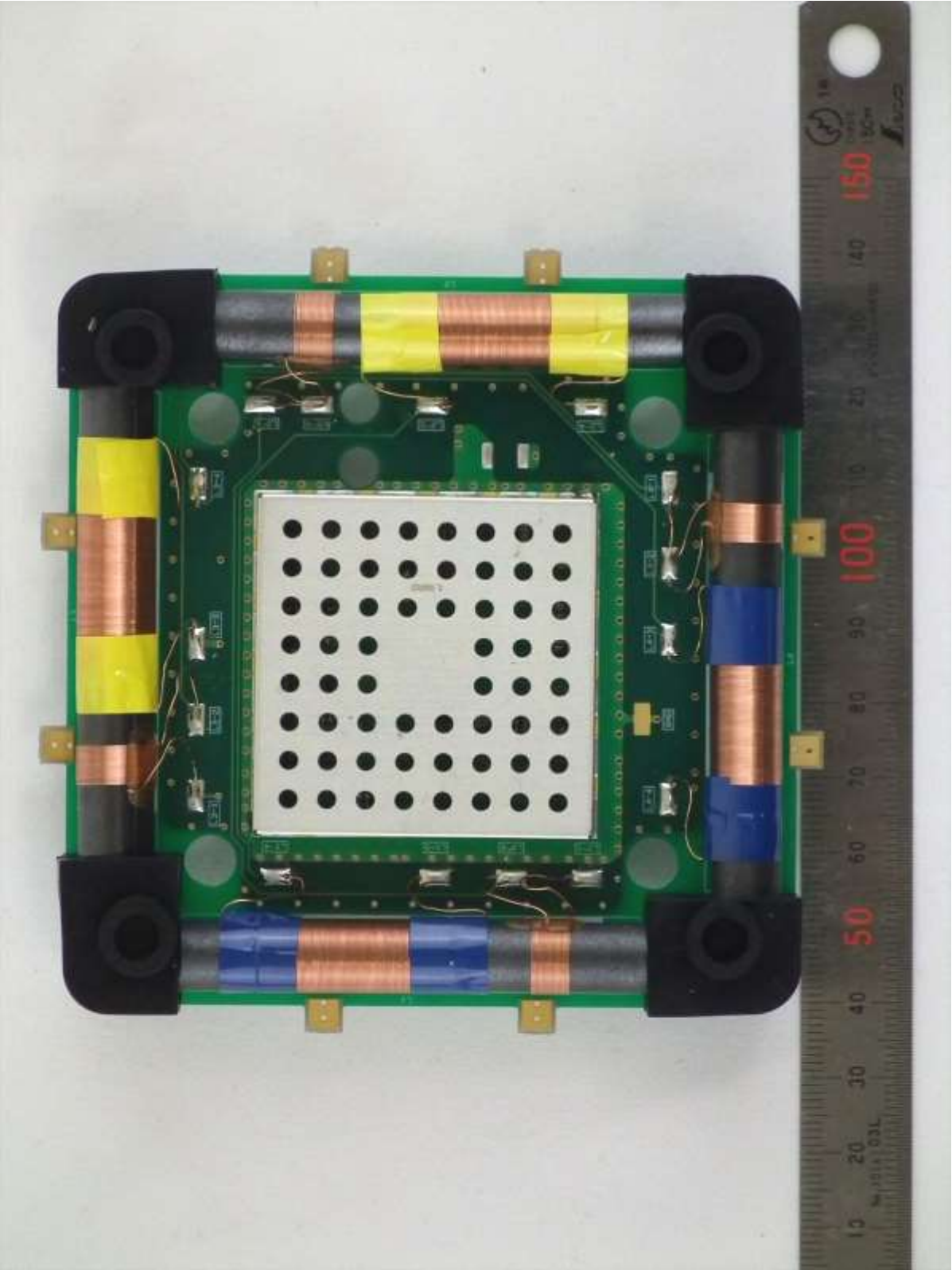
2.4 SIDE board 20P8219, Rear side



2.5 PREAMP board 08P3239, Front side

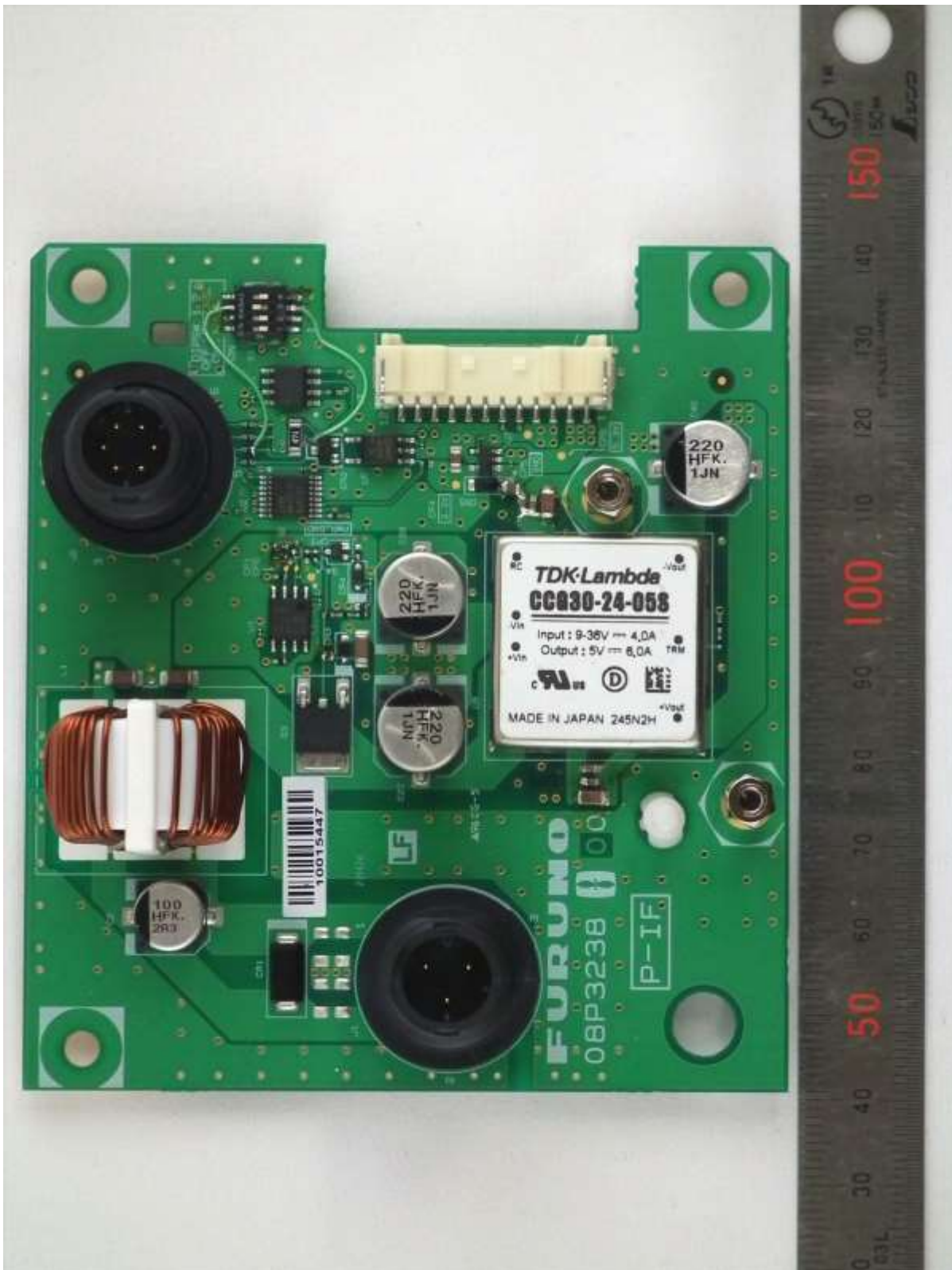


2.6 PREAMP board 08P3239, Rear side

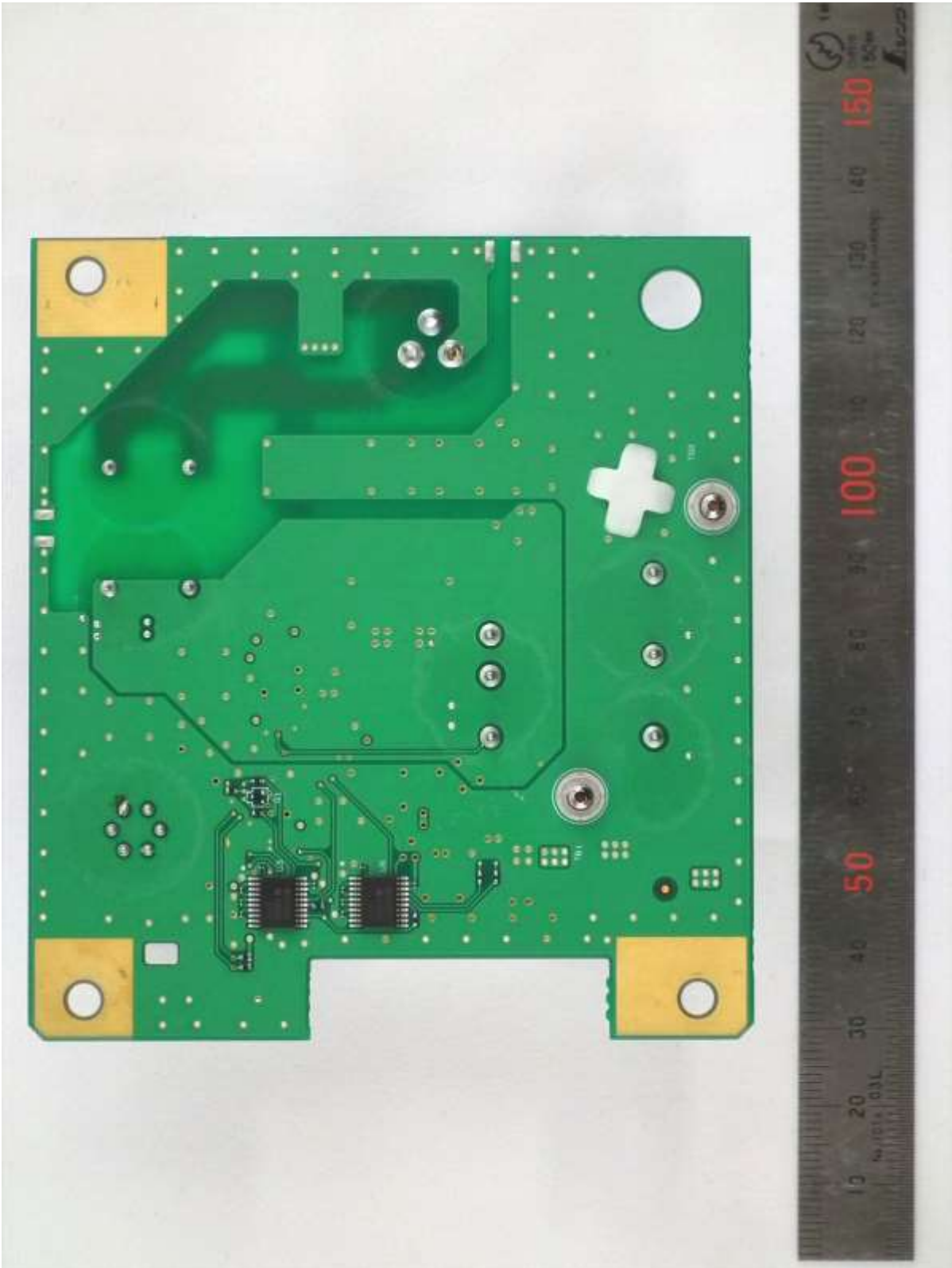


3 Printer (PP-900)

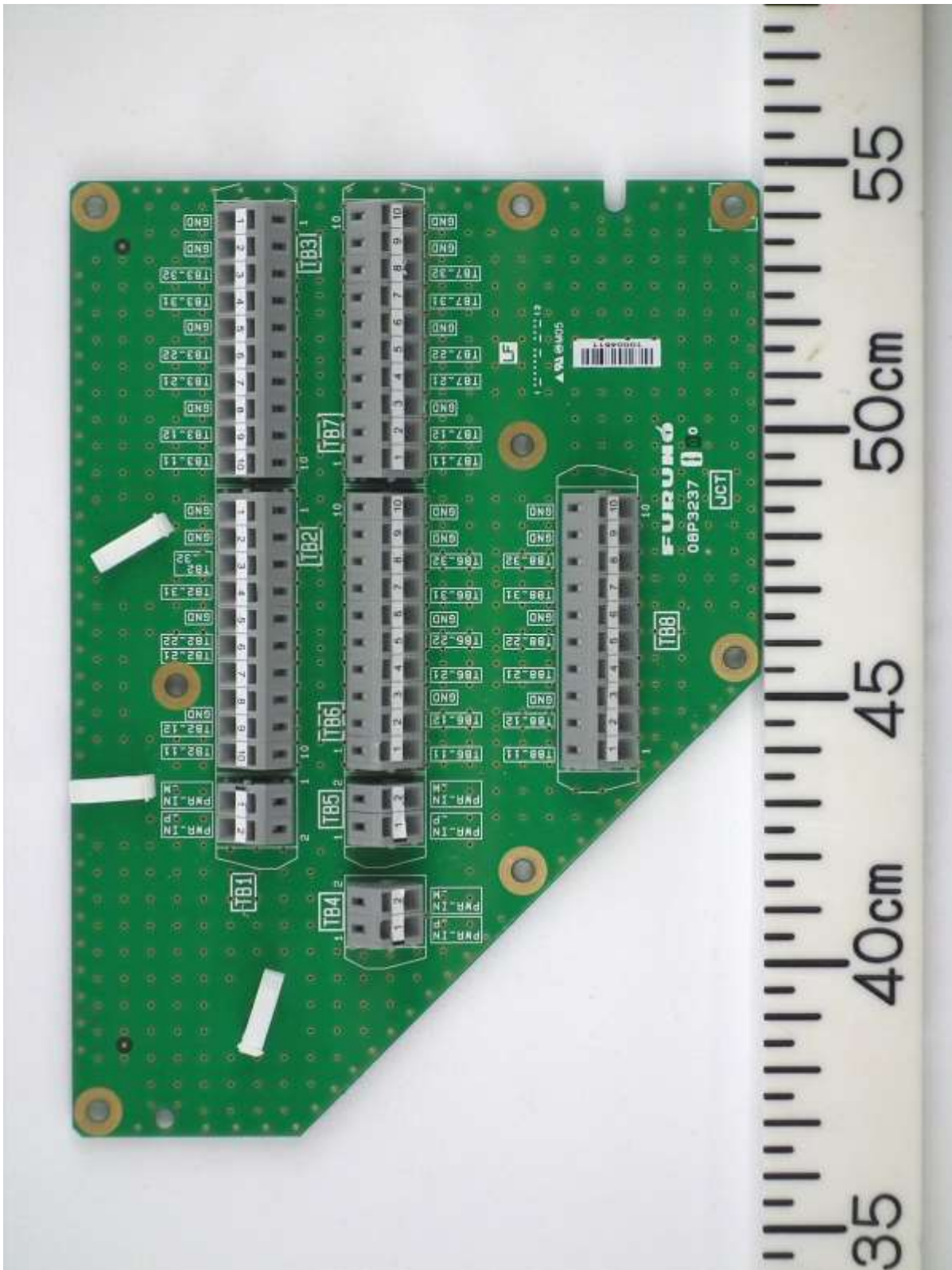
3.1 P-IF board 08P3238, Front side



3.2 P-IF board 08P3238, Rear side



4 Junction Box (IF-900)
4.1 JCT board 08P3237, Front side



4.2 JCT board 08P3237, Rear side

