



Fig. 7.1 Measuring Antenna: Broadband Rod Antenna Model 95010-1 of
Advanced Electronics
Frequency Range: 10 kHz - 20 MHz

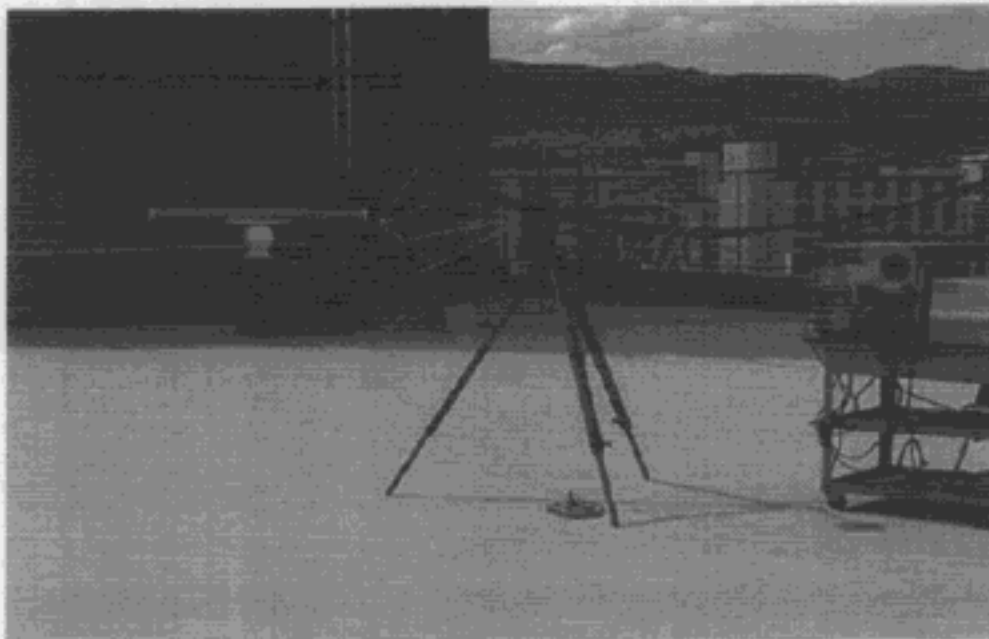


Fig. 7.2 Measuring Antenna: Biconical Antenna Model BIA-25 of Electro
Metrics
Frequency Range: 20 MHz - 200 MHz

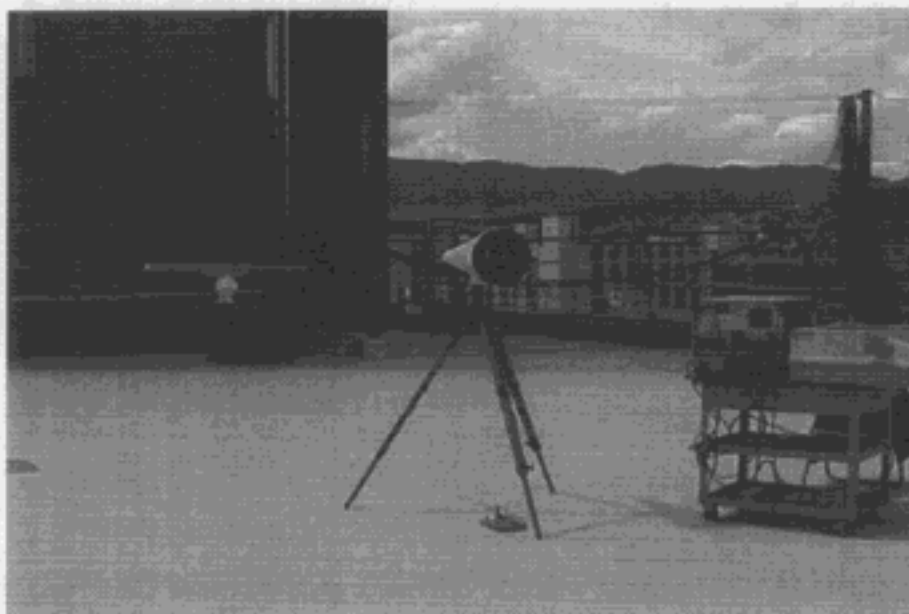


Fig. 7.3

Measuring Antenna: Conical Log-Spiral Antenna Model LCA-25 of Electro Metrics
Frequency Range: 200 MHz - 1 GHz



Fig. 7.4

Measuring Antenna: Double-ridged Guide Antenna Model RGA-180 of EMD
(Notch filter was connected between 9.3 and 9.5 GHz to ensure sufficient dynamic range of spectrum analyzer.)
Frequency Range: 1 GHz - 18 GHz

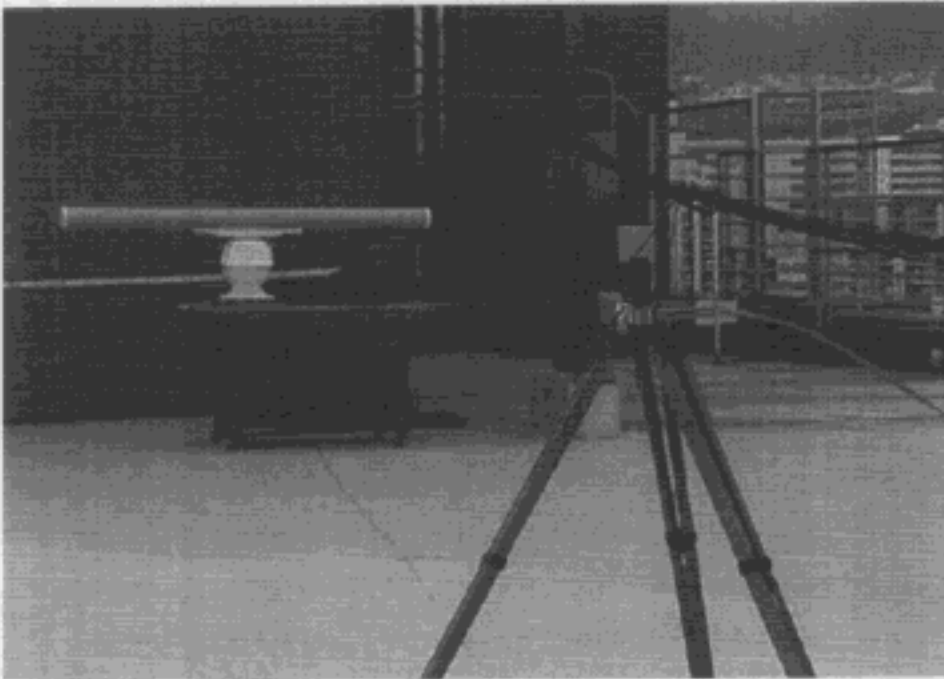


Fig. 7.5

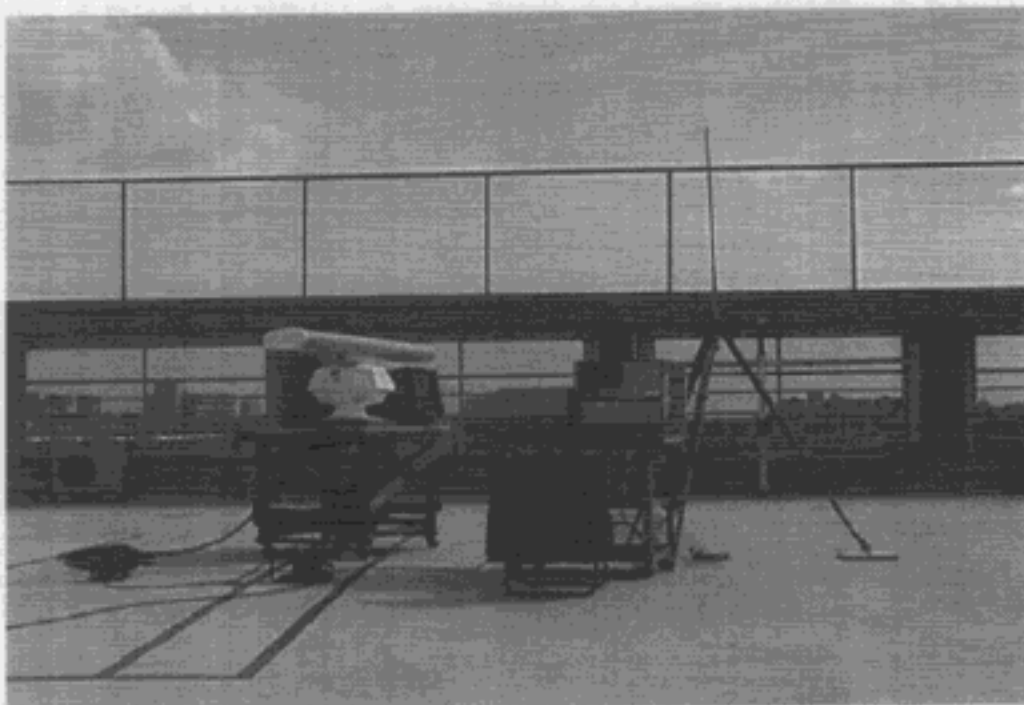
Measuring Antenna:
Frequency Range:

Toshiba Horn Antenna
18 GHz - 40 GHz

Measurement of Radiated Interference at 2 m



1/4 λ whip antenna

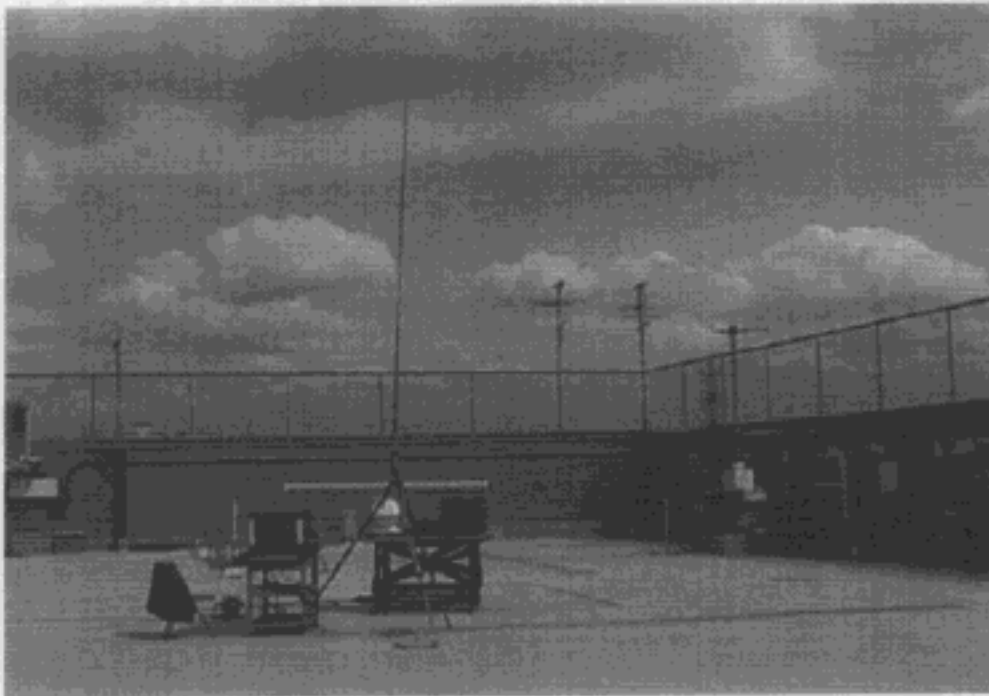


5/8 λ whip antenna

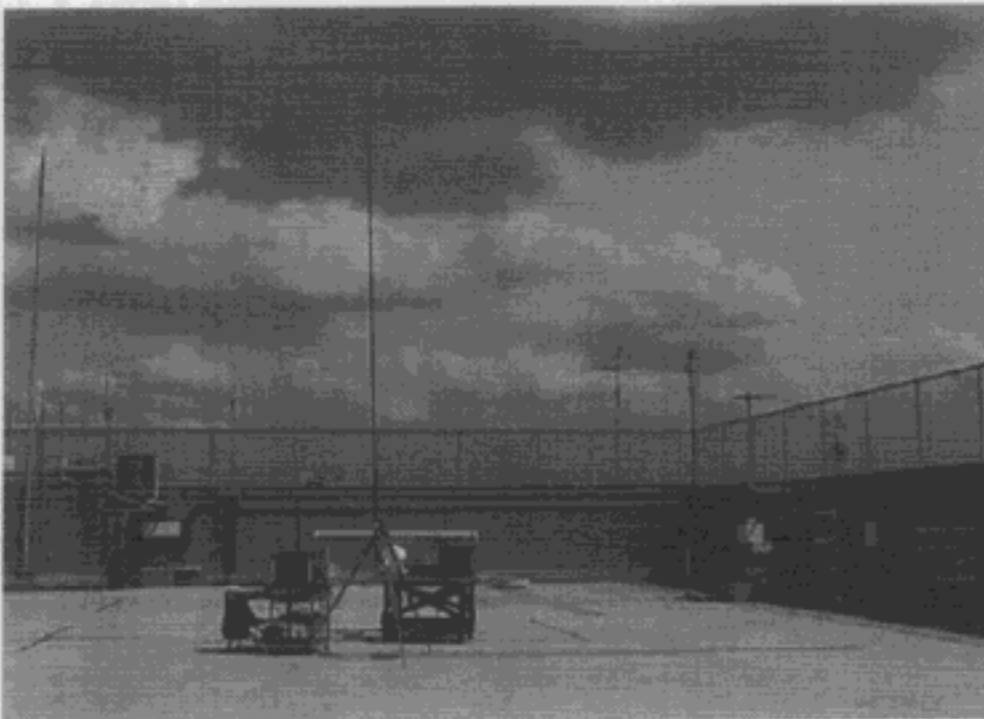
LABOTECH

Furuno Labotech International

Report no. : FLI 12-98-018



4 m whip antenna



6 m whip antenna