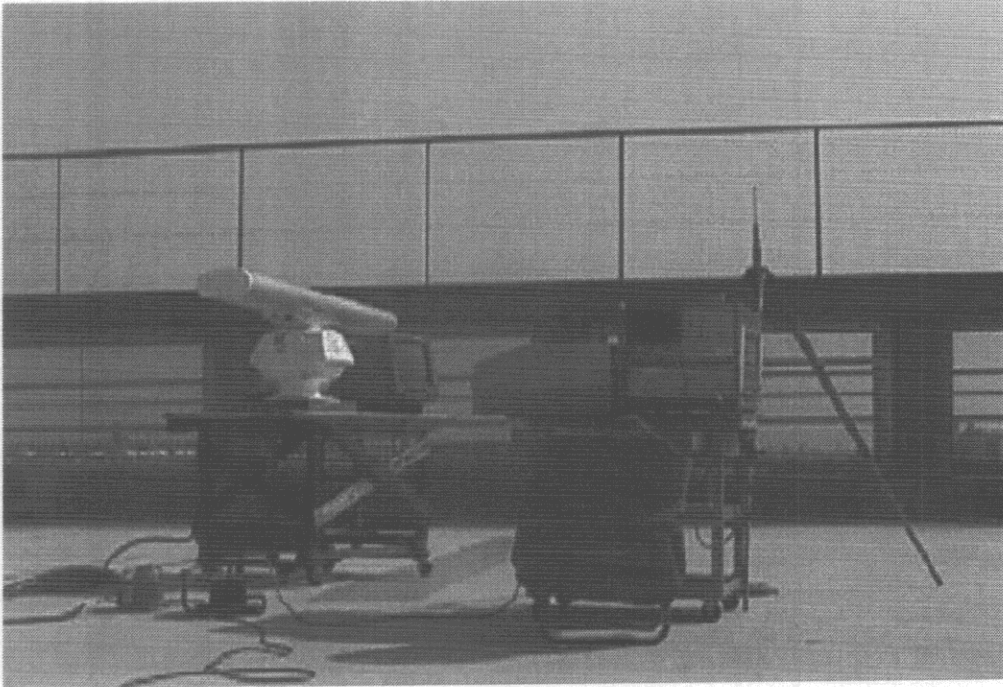
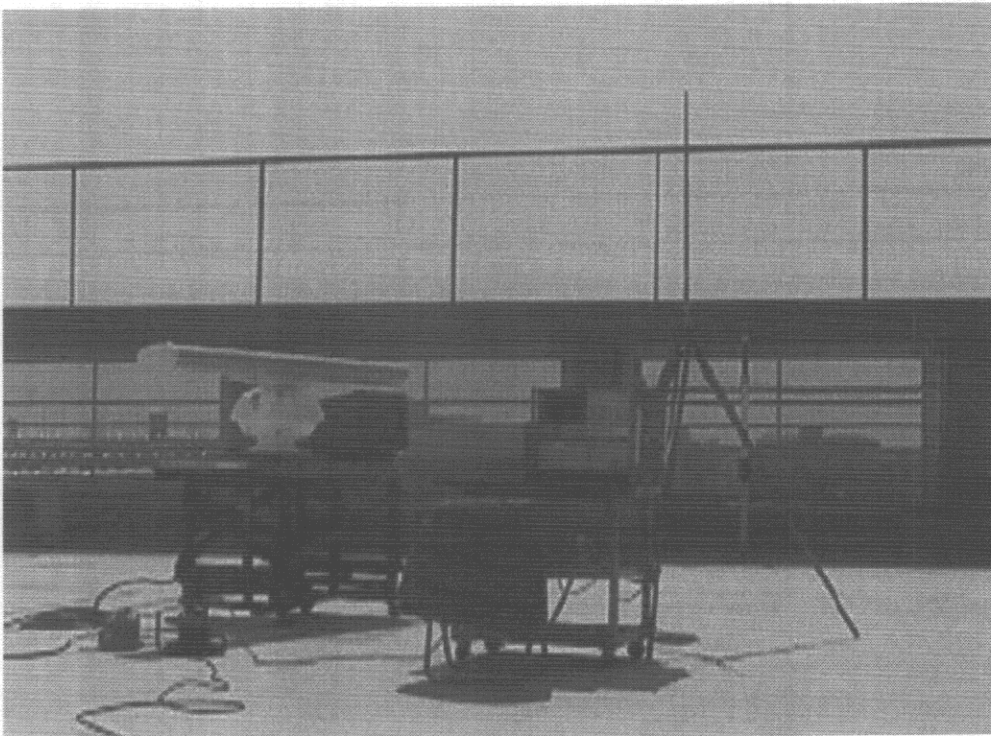


Measurement of Radiated Interference at 2 m



$1/4 \lambda$ whip antenna



$5/8 \lambda$ whip antenna

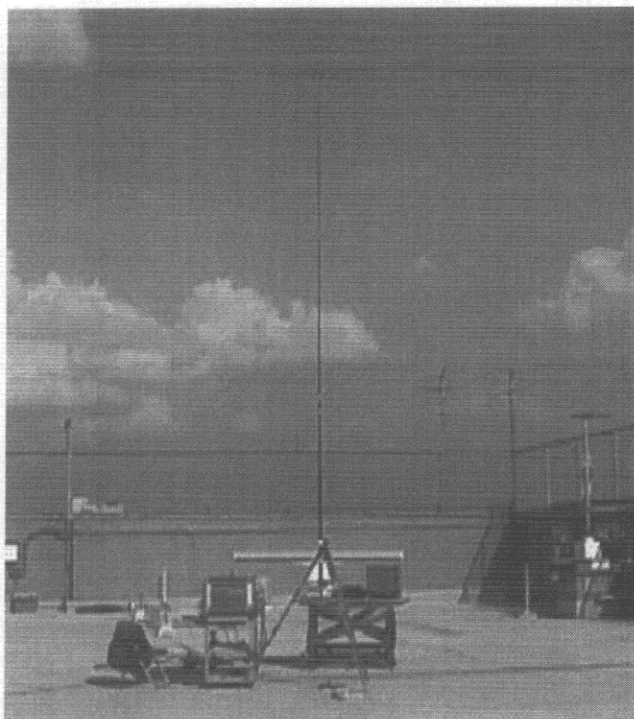
LABOTECH

Furuno Labotech International

Report no. : FLI 12-98-019



4 m whip antenna



6 m whip antenna

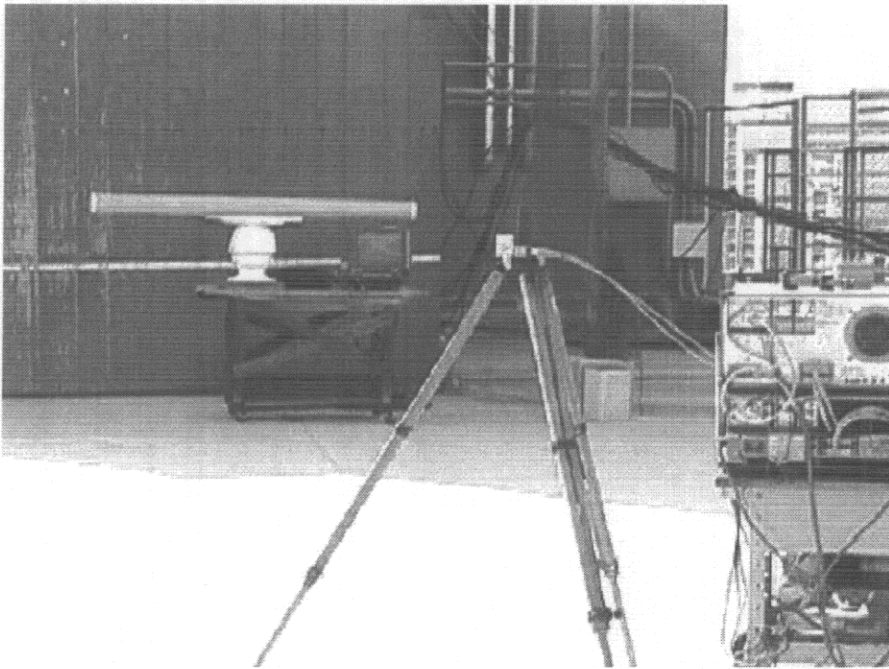


Fig. 7.5

Measuring Antenna:
Frequency Range:

Toshiba Horn Antenna
18 GHz - 40 GHz

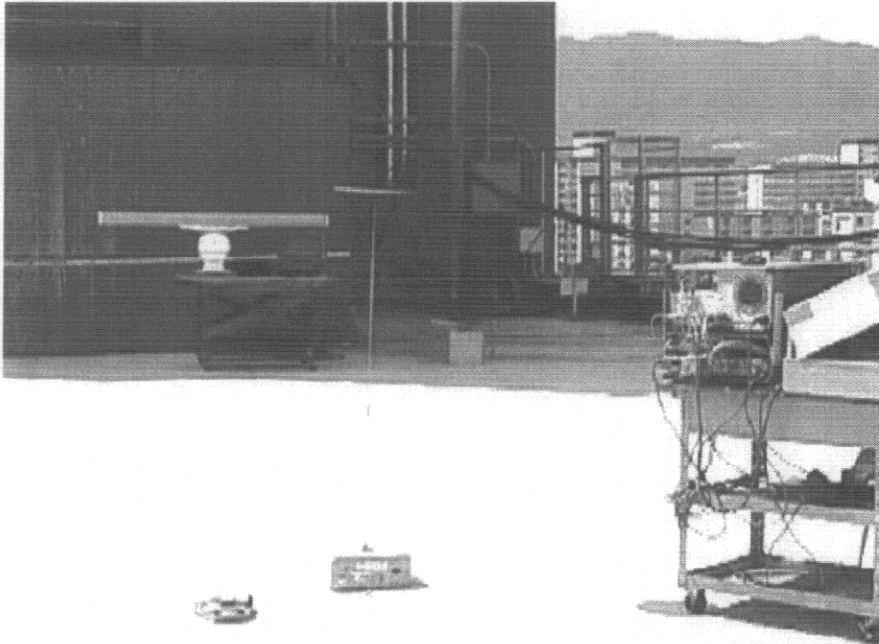


Fig. 7.1

Measuring Antenna:

Broadband Rod Antenna Model 95010-1 of
Advanced Electronics

Frequency Range:

10 kHz - 20 MHz

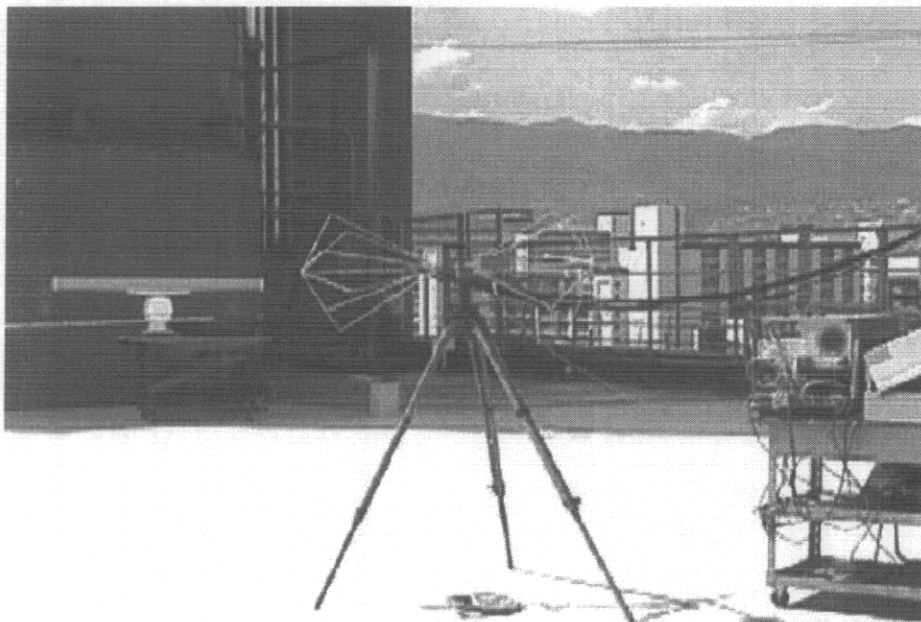


Fig. 7.2

Measuring Antenna:

Biconical Antenna Model BIA-25 of Electro
Metrics

Frequency Range:

20 MHz - 200 MHz

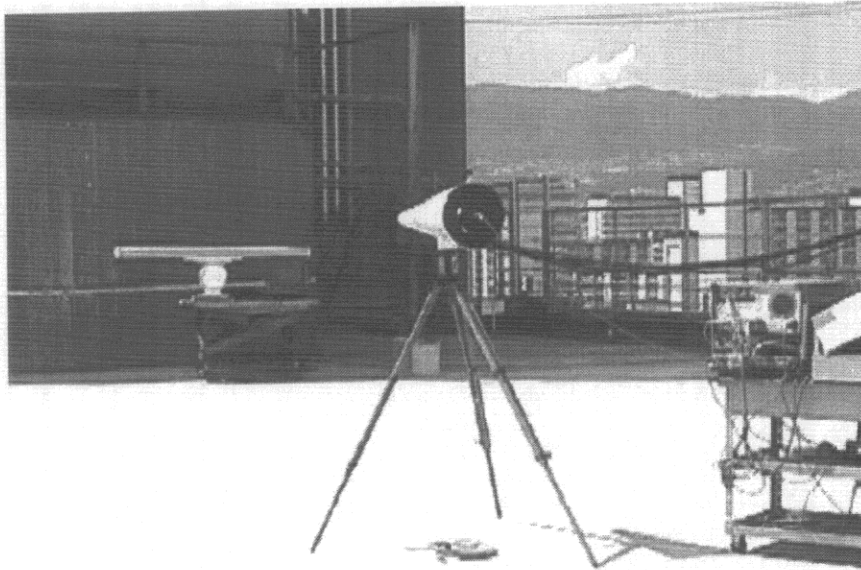


Fig. 7.3

Measuring Antenna: Conical Log-Spiral Antenna Model LCA-25 of Electro Metrics
Frequency Range: 200 MHz - 1 GHz



Fig. 7.4

Measuring Antenna: Double-ridged Guide Antenna Model RGA-180 of EMD
(Notch filter was connected between 9.3 and 9.5 GHz to ensure sufficient dynamic range of spectrum analyzer.)
Frequency Range: 1 GHz - 18 GHz