

3 Remote Station RB-8810 with Handset HS-8800 (upper)

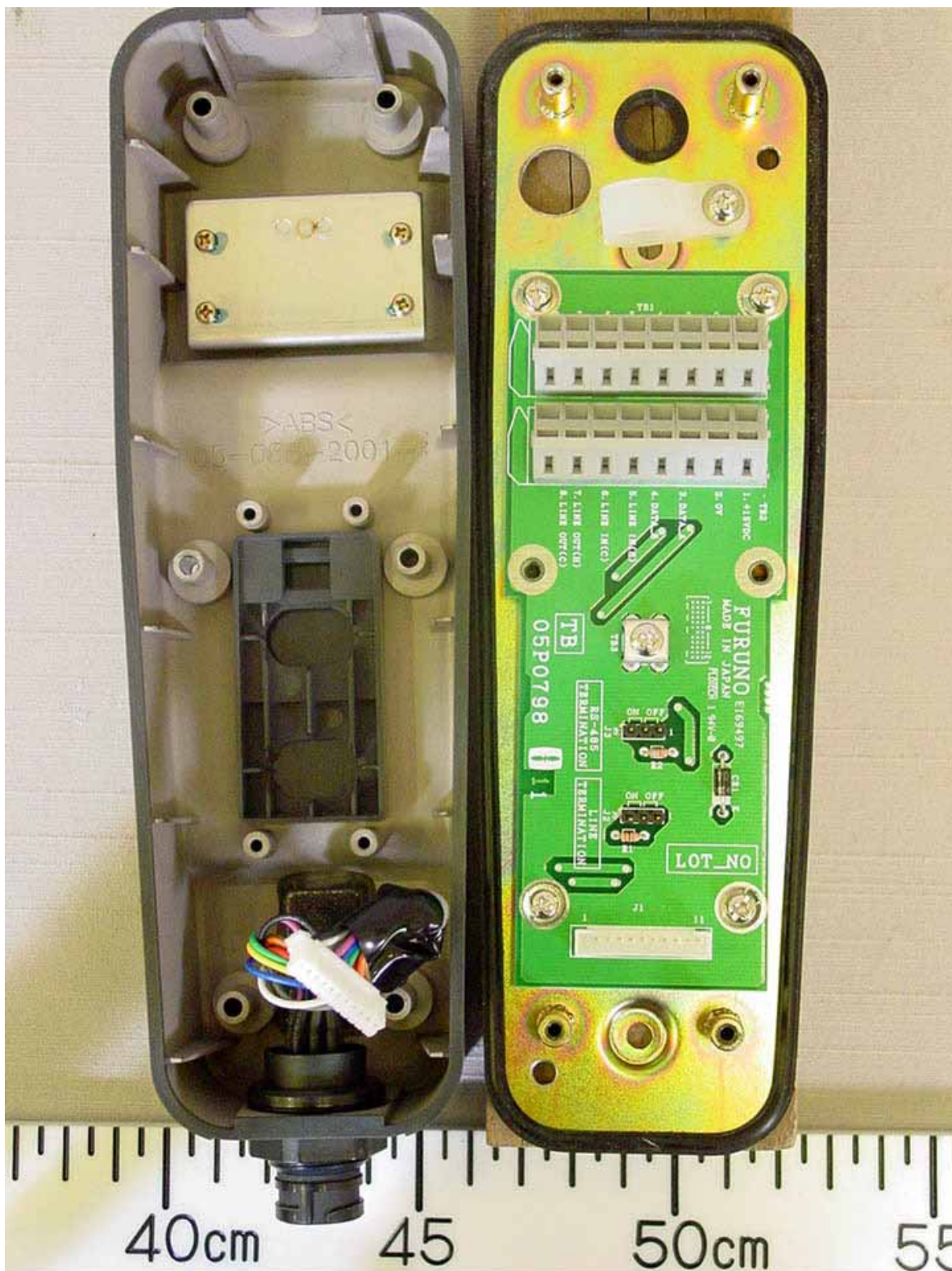
3.1 Top View



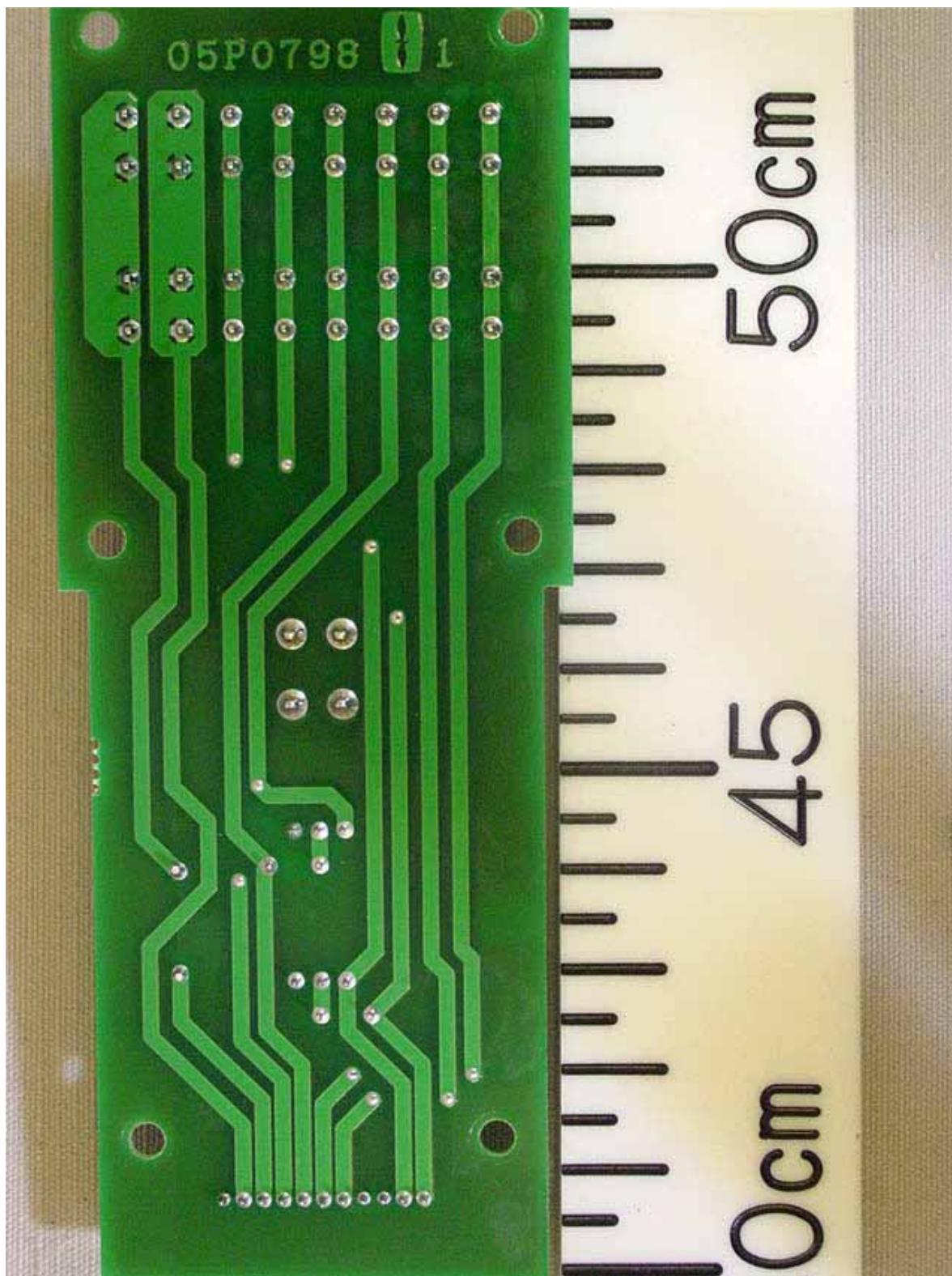
3.2 Top View (with Handset taken off the hook)



3.3 Inside View (with Cover opened, showing TB Board 05P0798 Front side)



3.4 TB Board 05P0798 Rear side



3.5 Name Plate



4 Remote Station RB-8800 with Handset HS-8800

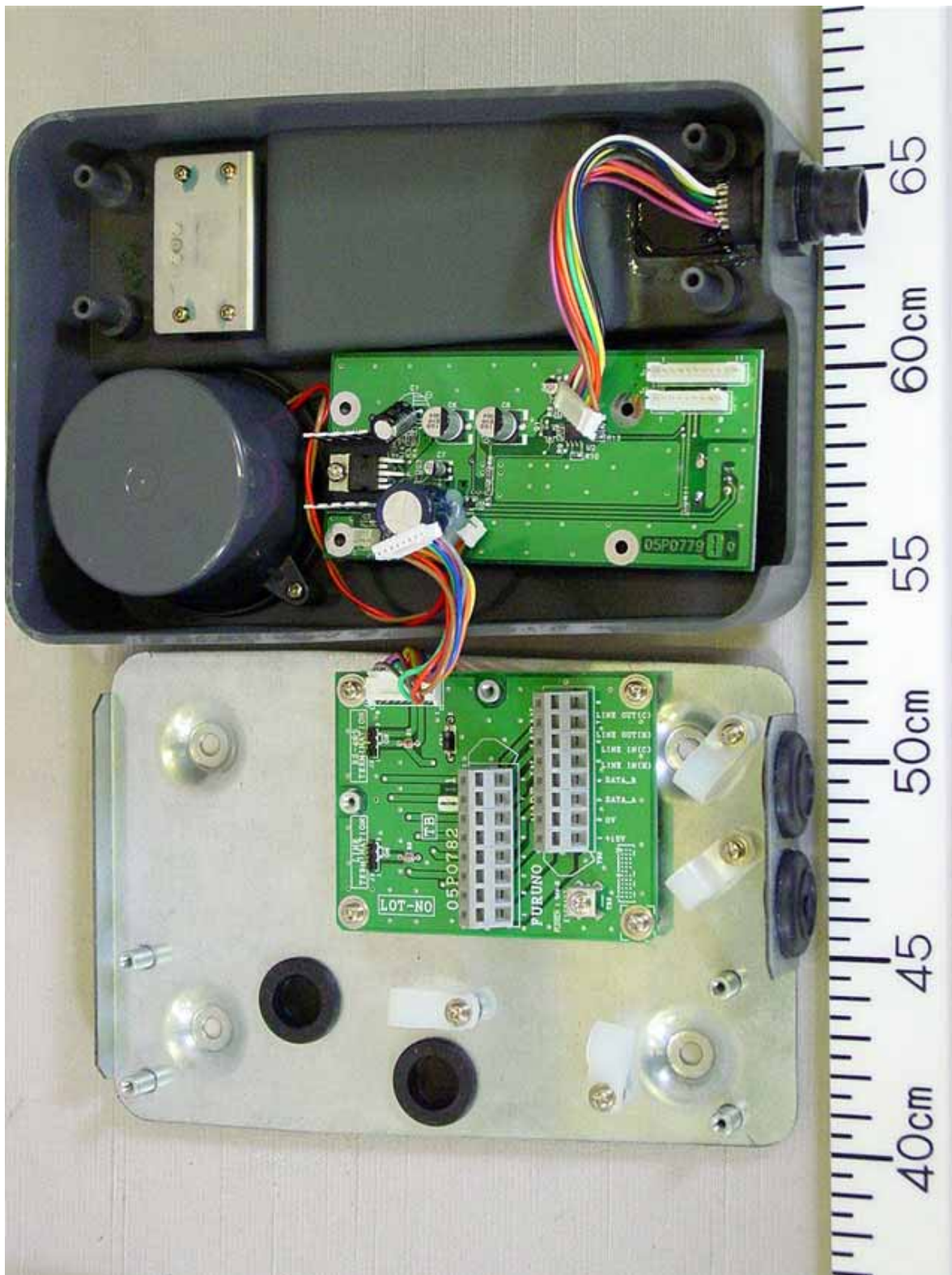
4.1 Top View



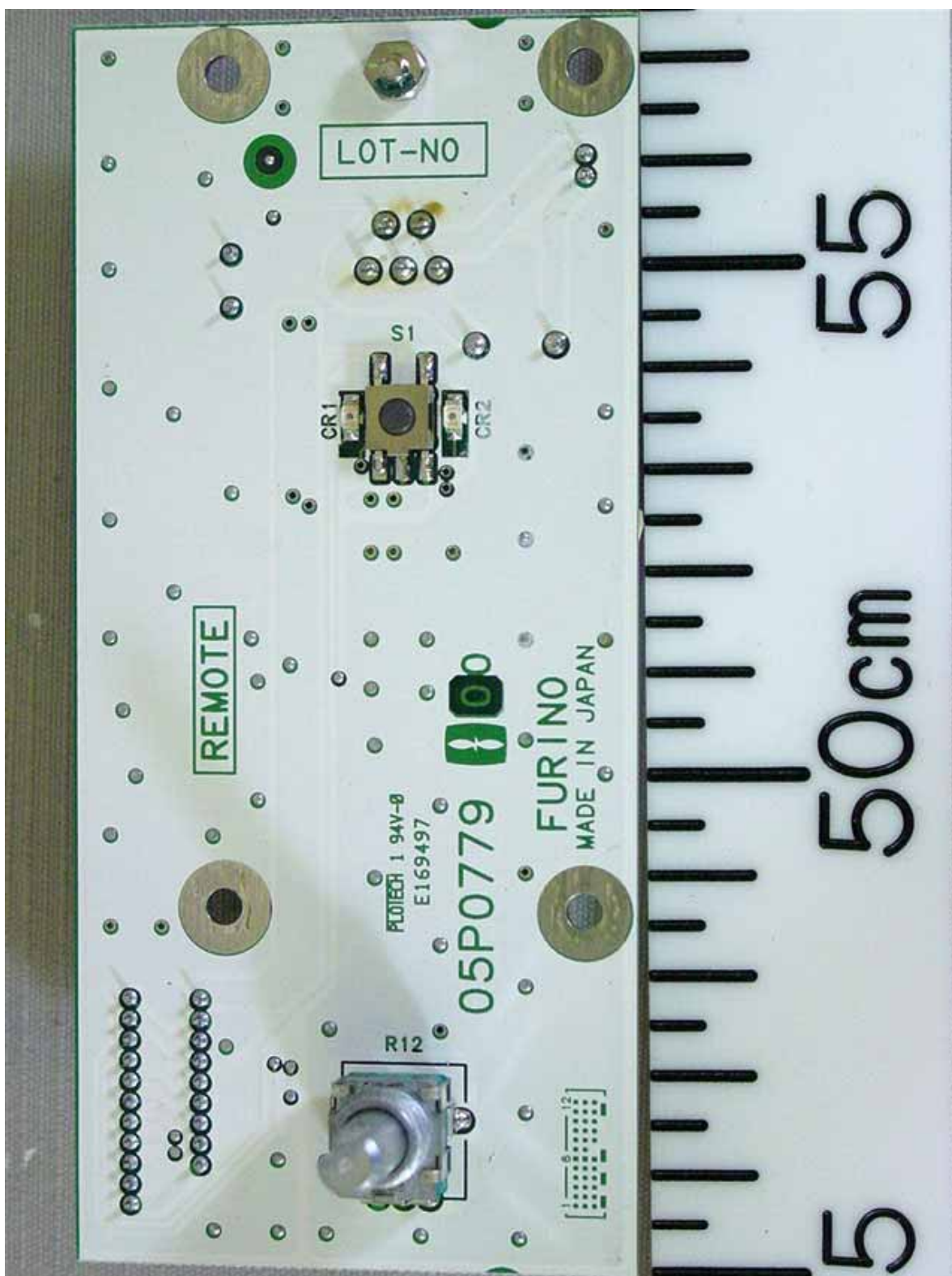
4.2 Top View (with Handset taken off the hook)



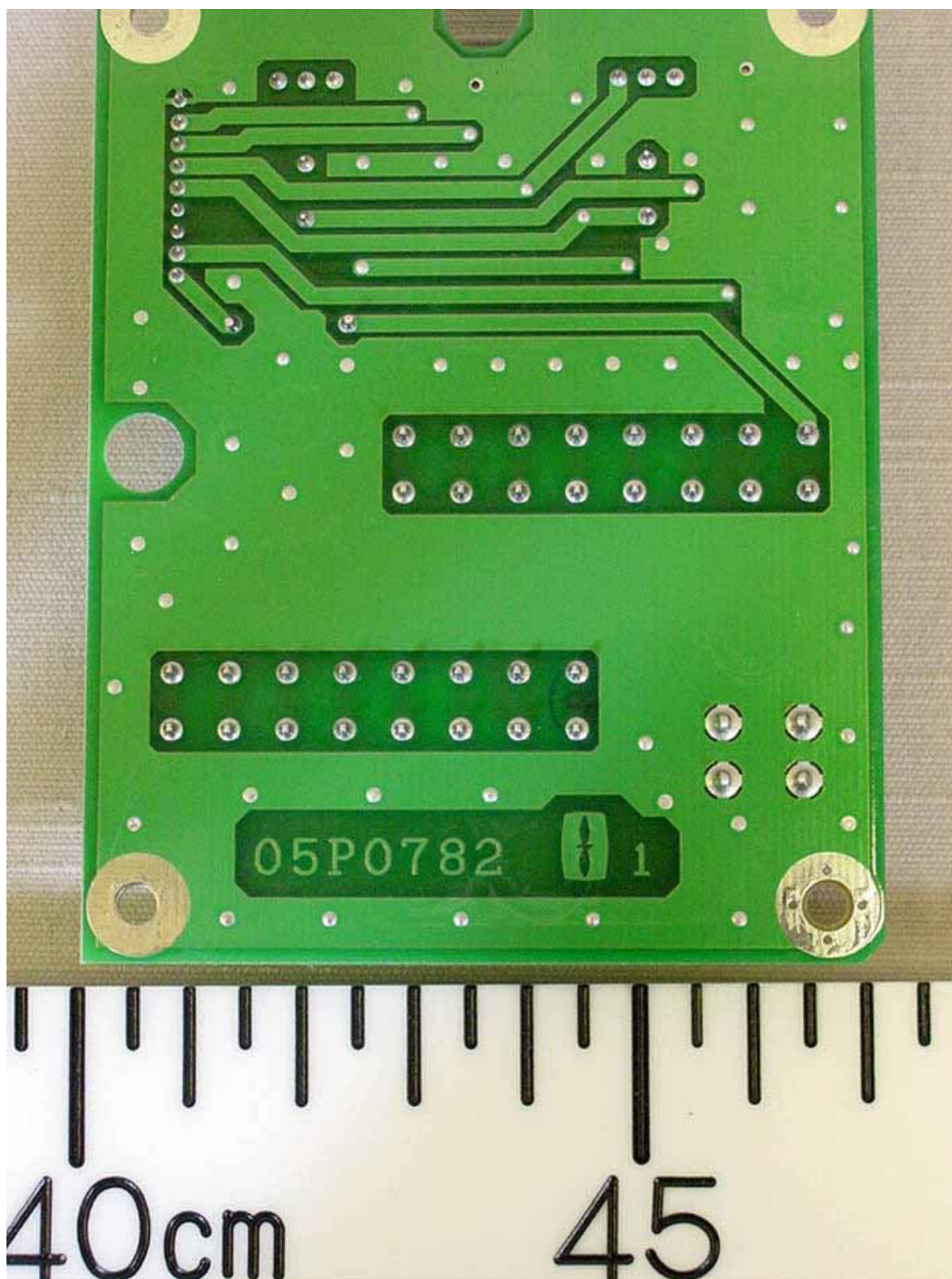
4.3 Inside View (showing REMOTE Board 05P0779 Rear side (upper) and TB Board 05P0782 Front side (lower))



4.4 REMOTE Board 05P0779 Front side



4.5 TB Board 05P0782 Rear side



4.6 Name Plate

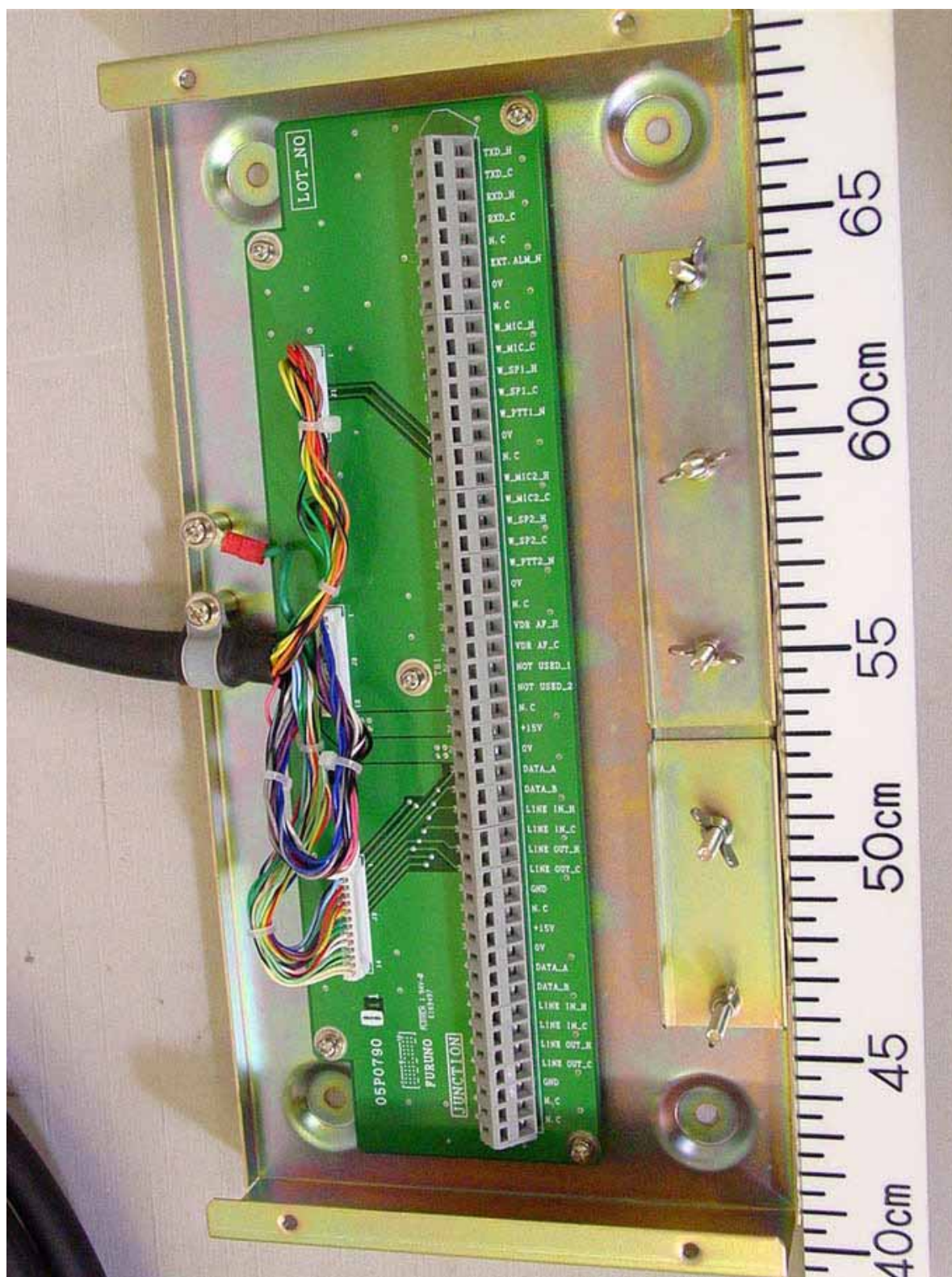


5 Junction Box IF-8810

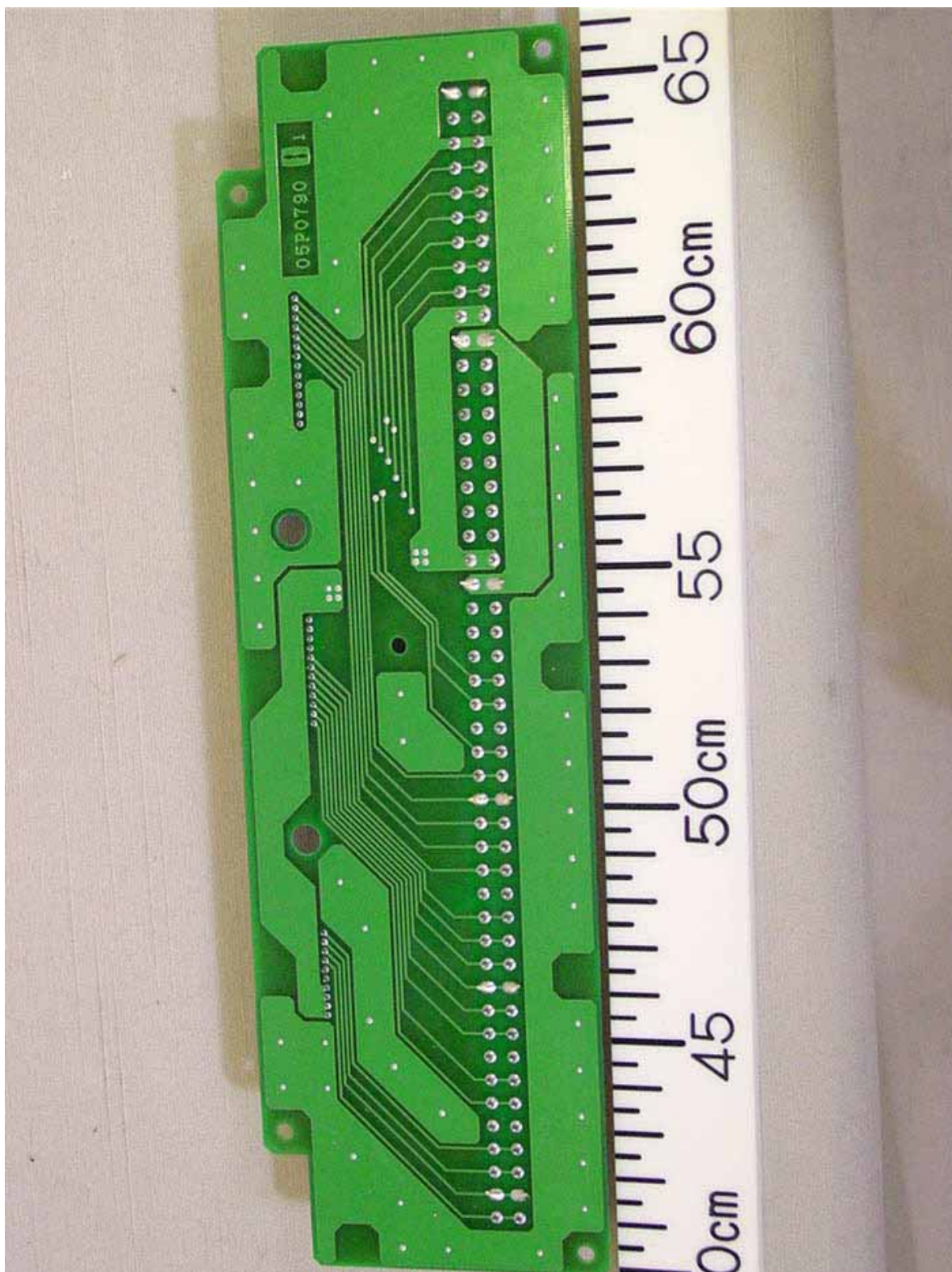
5.1 Top View (Showing Name Plate)



5.2 Inside View (with Top cover removed, showing JUNCTION Board 05P0790 Front side)



5.3 JUNCTION Board 05P0790 Rear side

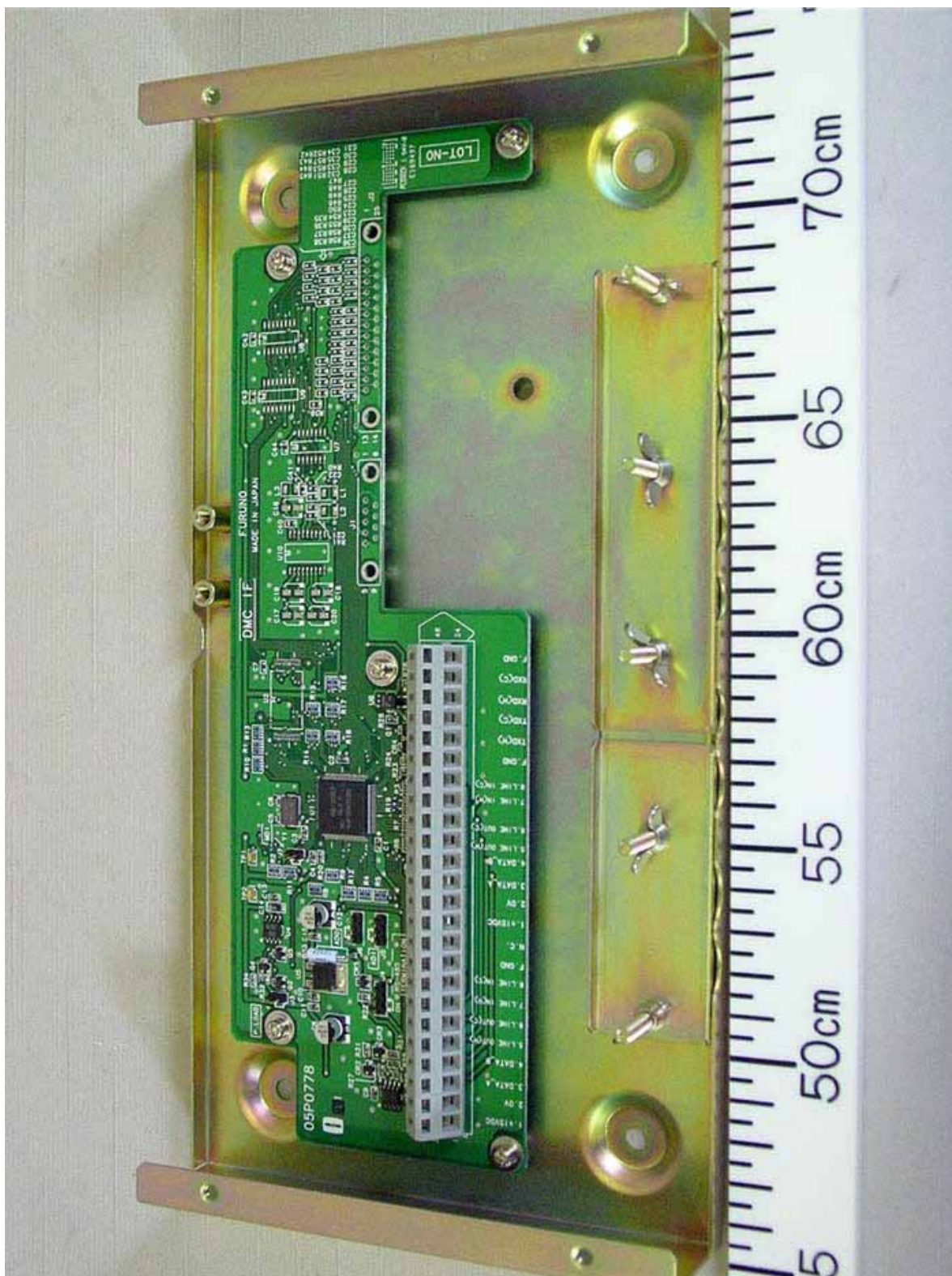


6 DMC Interface IF-8820

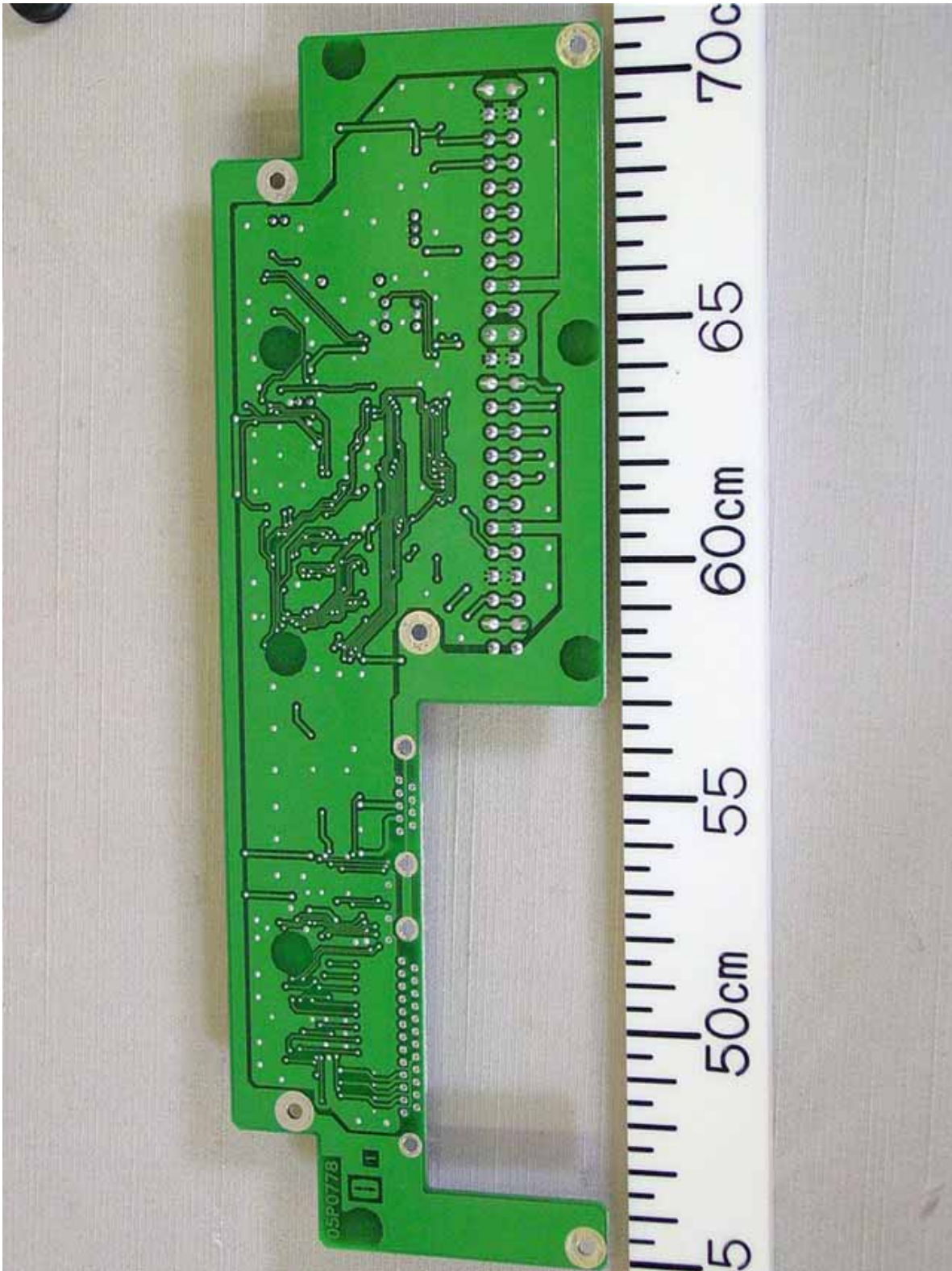
6.1 Top View (Showing Name Plate)



6.2 Inside View (with Top cover removed, showing DMC IF Board 05P0778 Front side)



6.3 DMC IF Board 05P0778 Rear side



7 Handset HS-8800

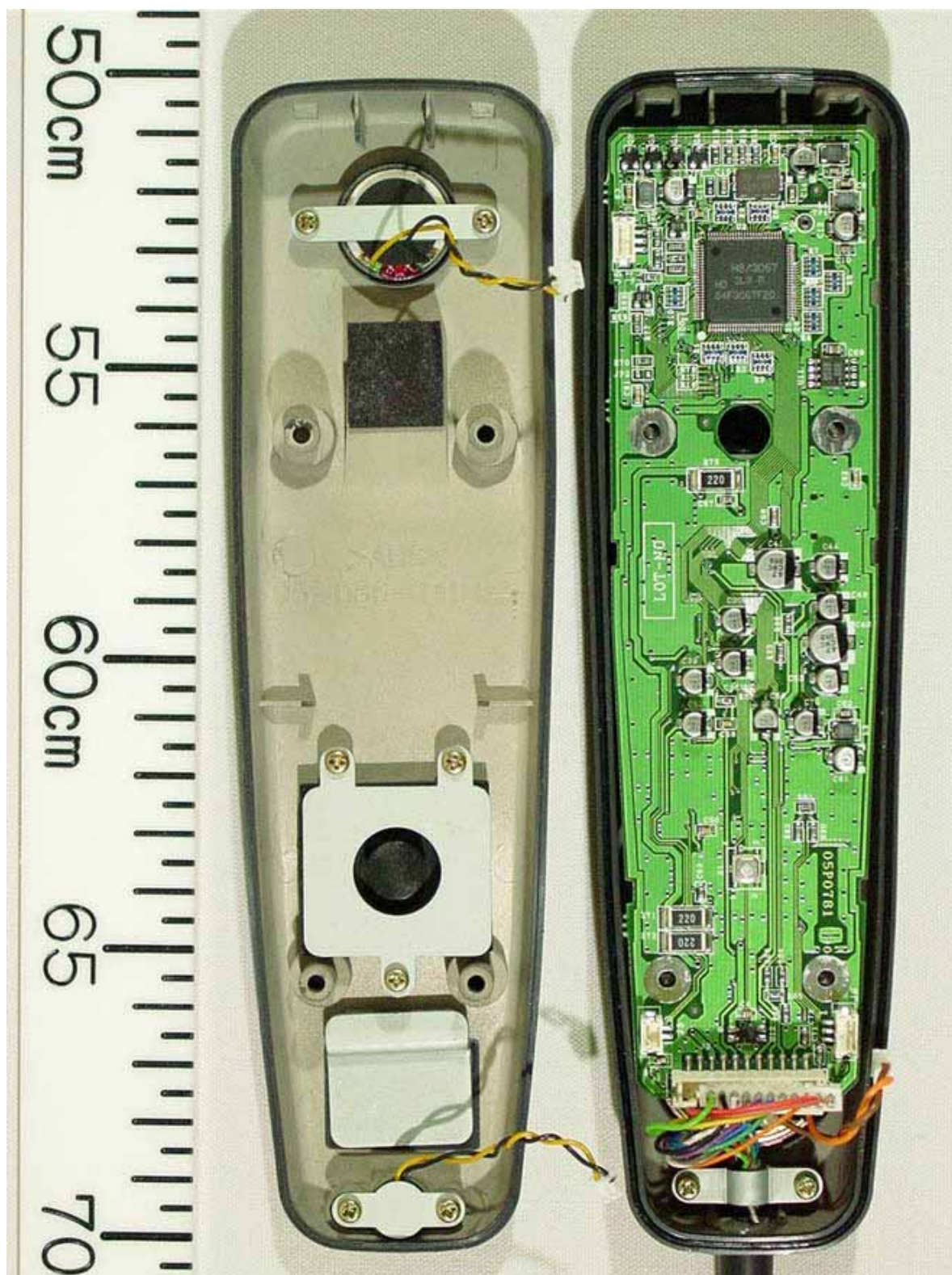
7.1 Top View



7.2 Bottom View (showing Name Plate)



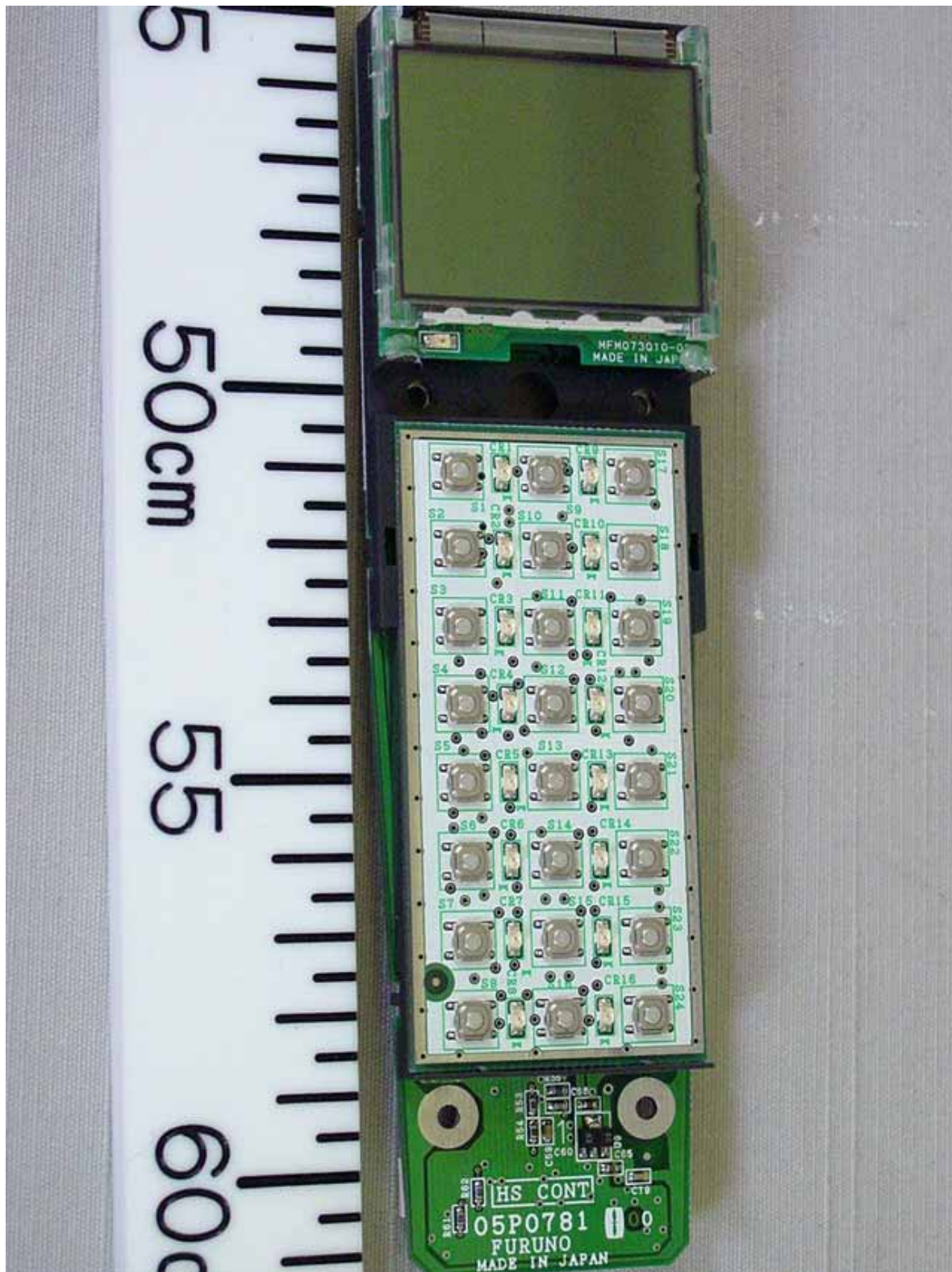
7.3 Inside View (With Cover opened, showing HS CONT Board 05P0781 Front side)



7.4 Inside View (with HS CONT Board removed, showing Back of Front Panel)



7.5 HS CONT Board Rear side with LCD MFM-073Q10 (upper) and KEY Board 05P0715 (lower) installed



7.6 HS CONT Board 05P0781 Rear side (left), LCD MFM-073Q10 Rear side (upper right) and KEY Board 05P0715 Rear side (lower right)

