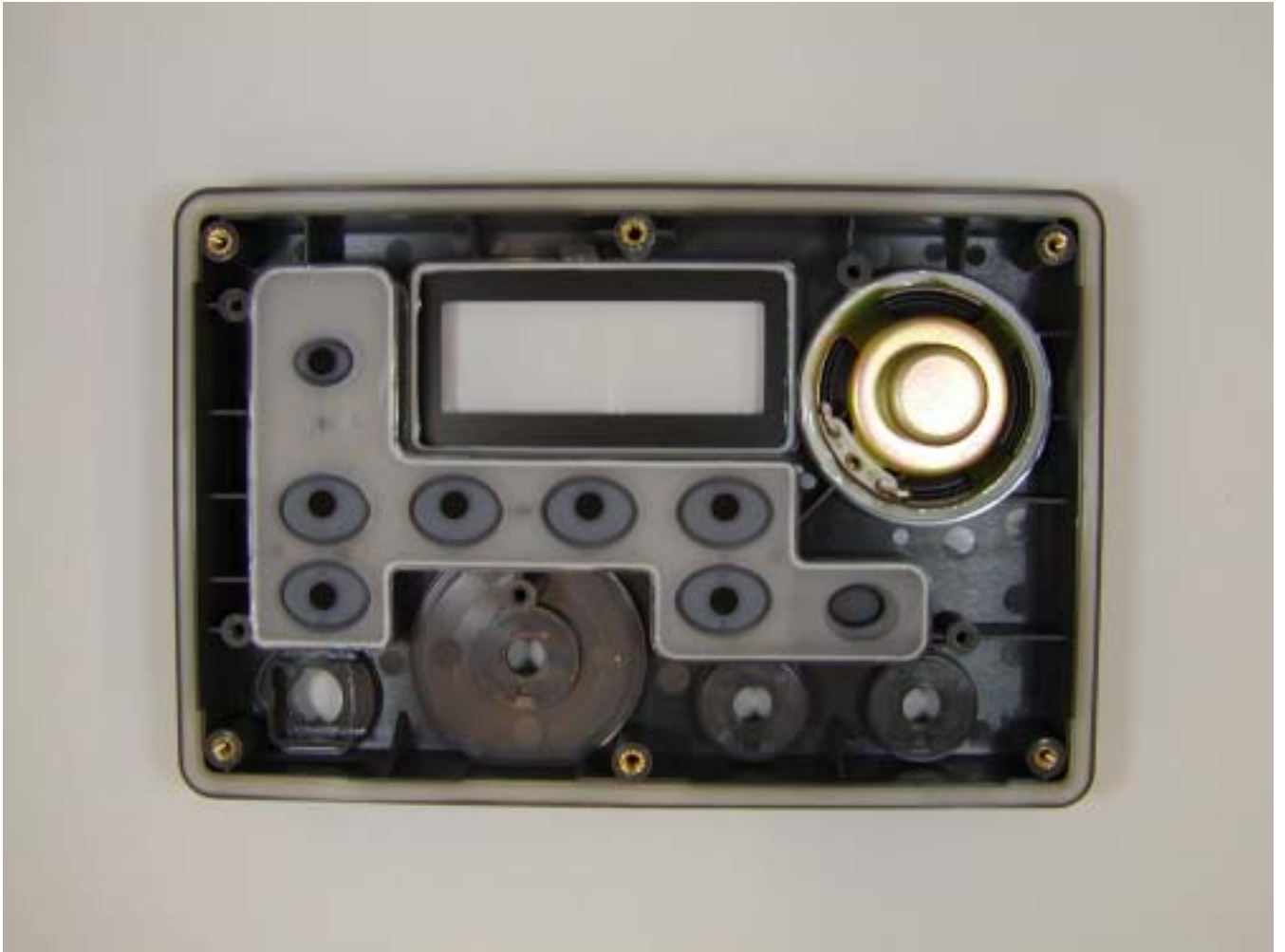


Front panel -inside view



Front view with panel removed



Rear view of the front panel



Rear chassis showing main PCB



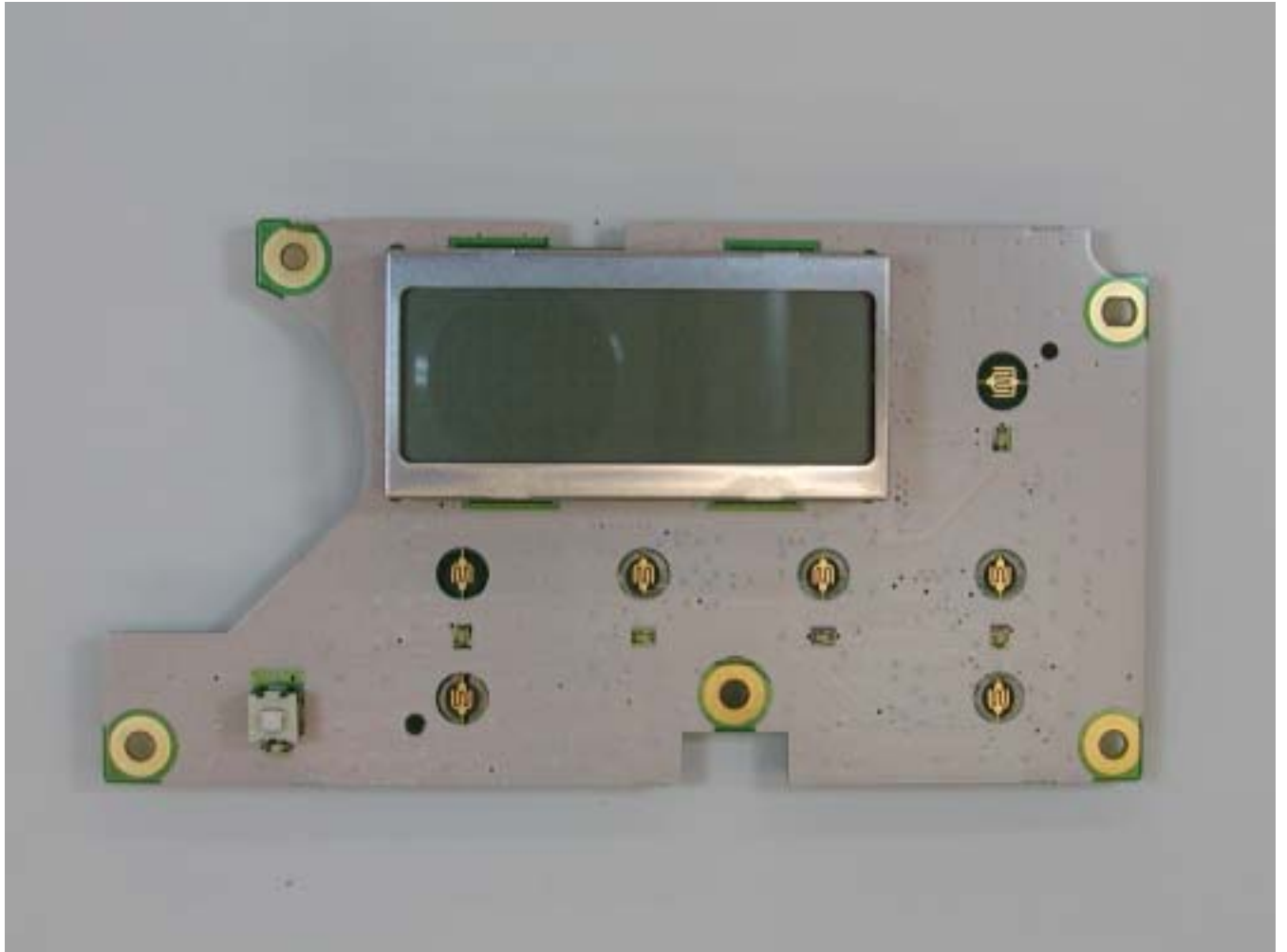
Rear chassis with main PCB removed



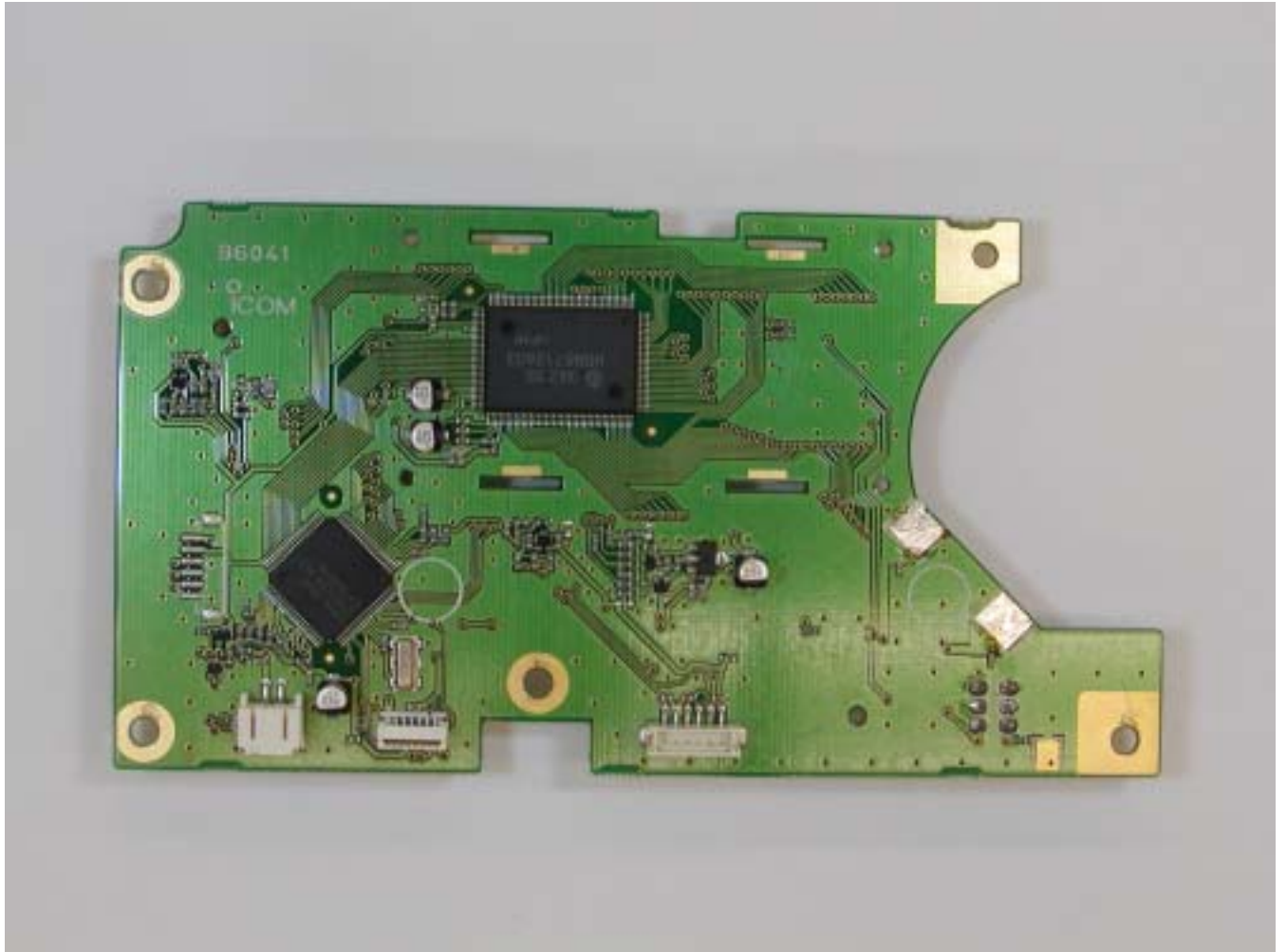
Rear chassis removing all PCBs



Logic PCB -front

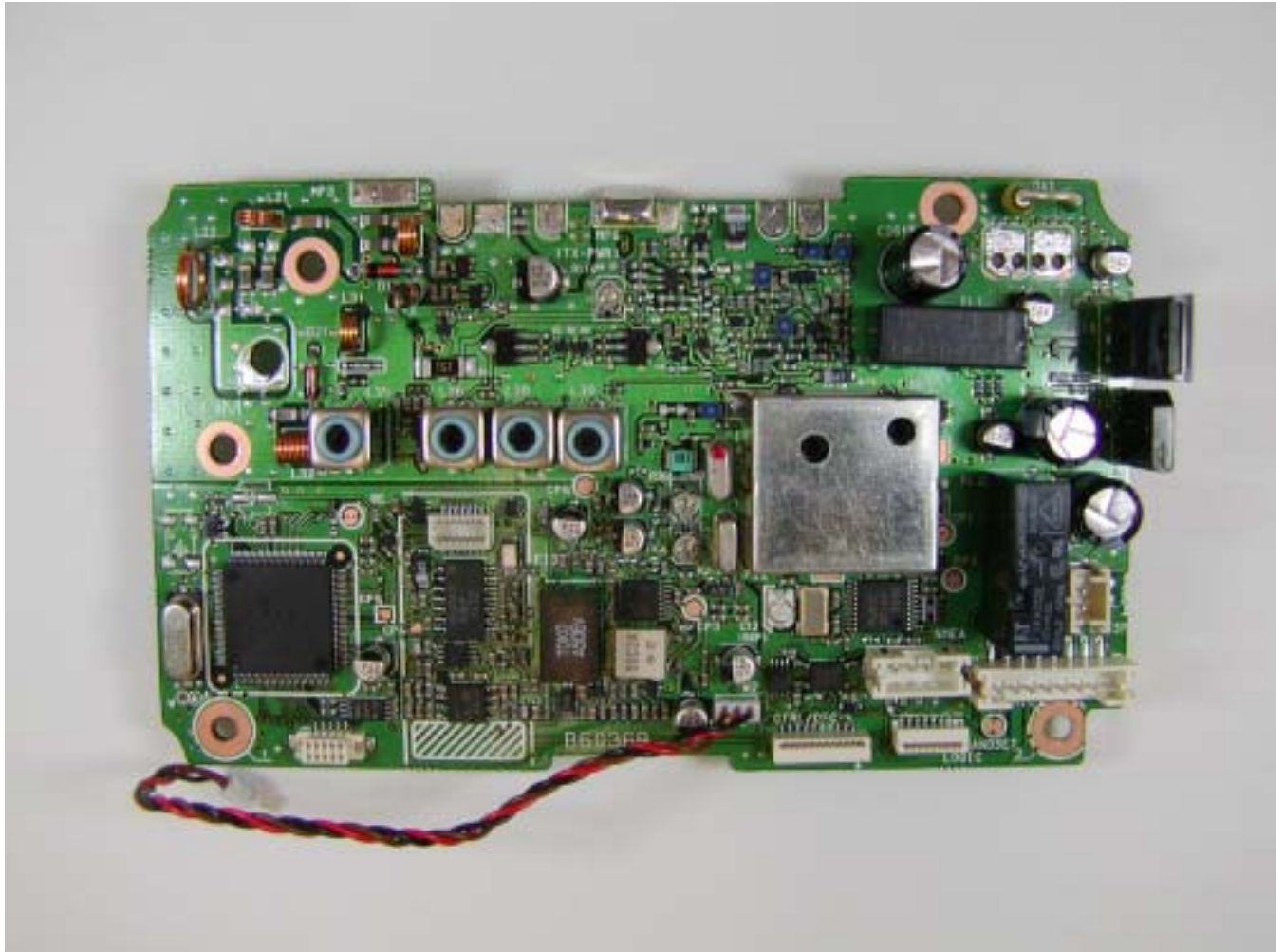


Logic PCB -rear

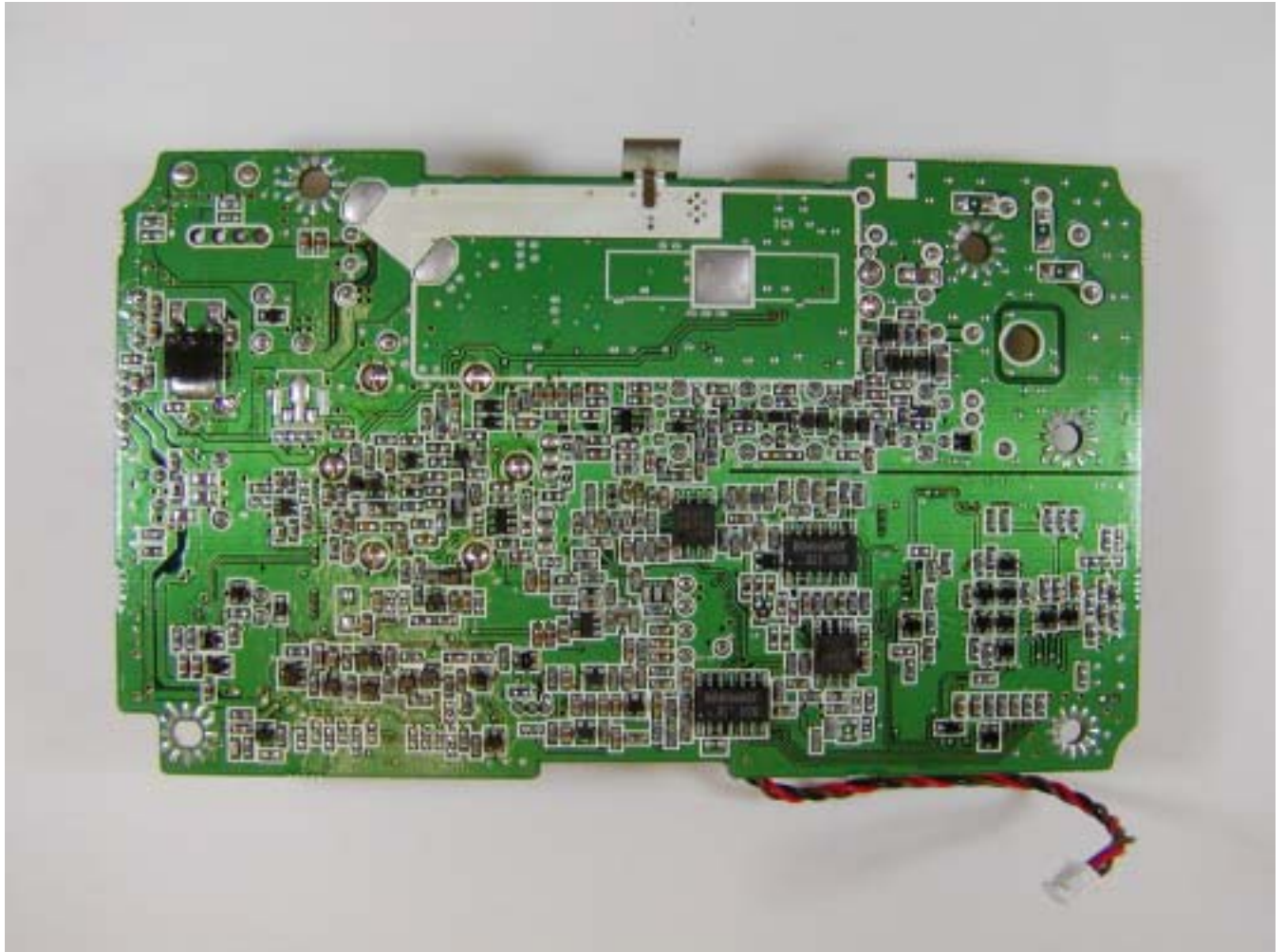




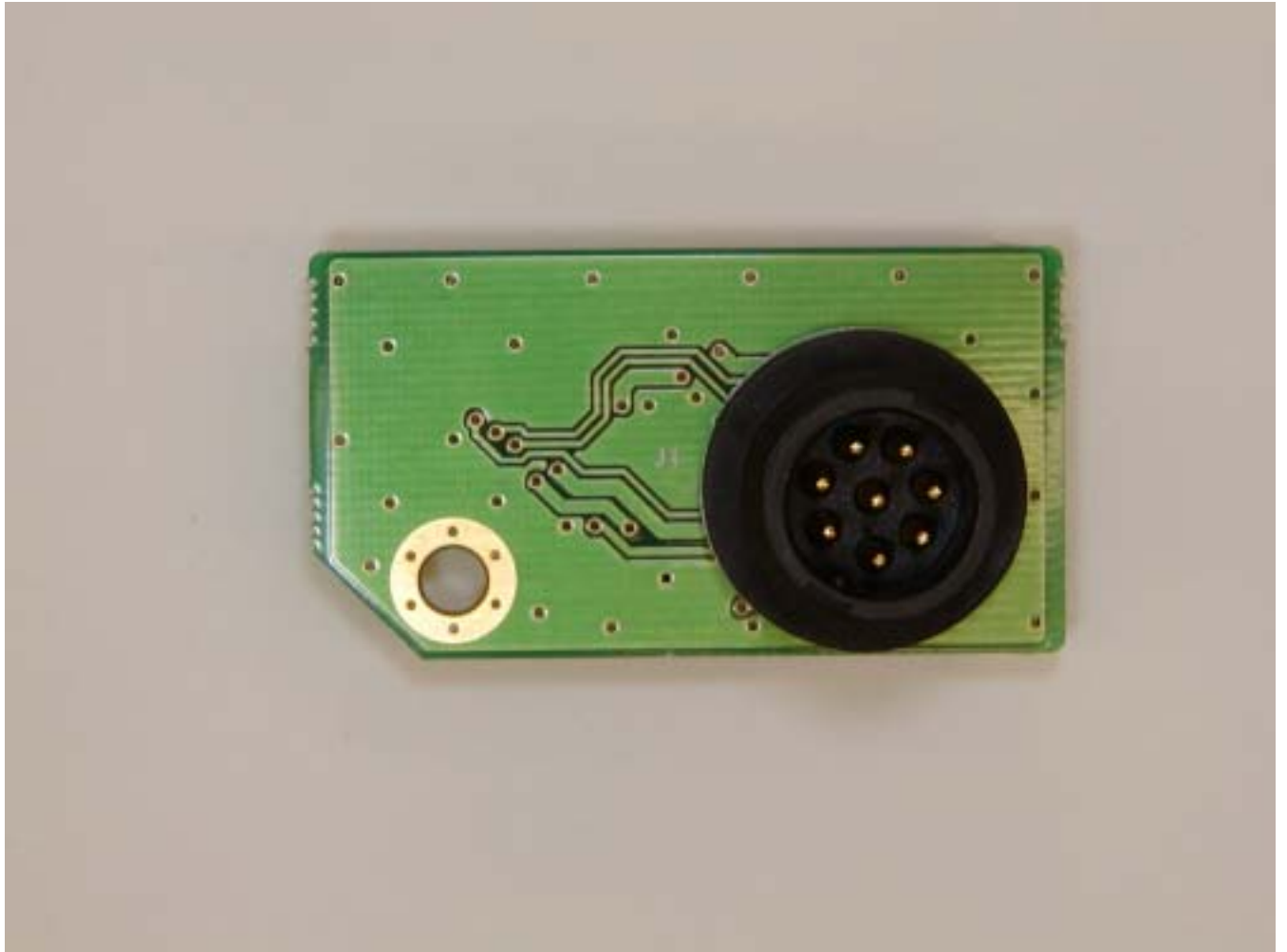
Main PCB - front view



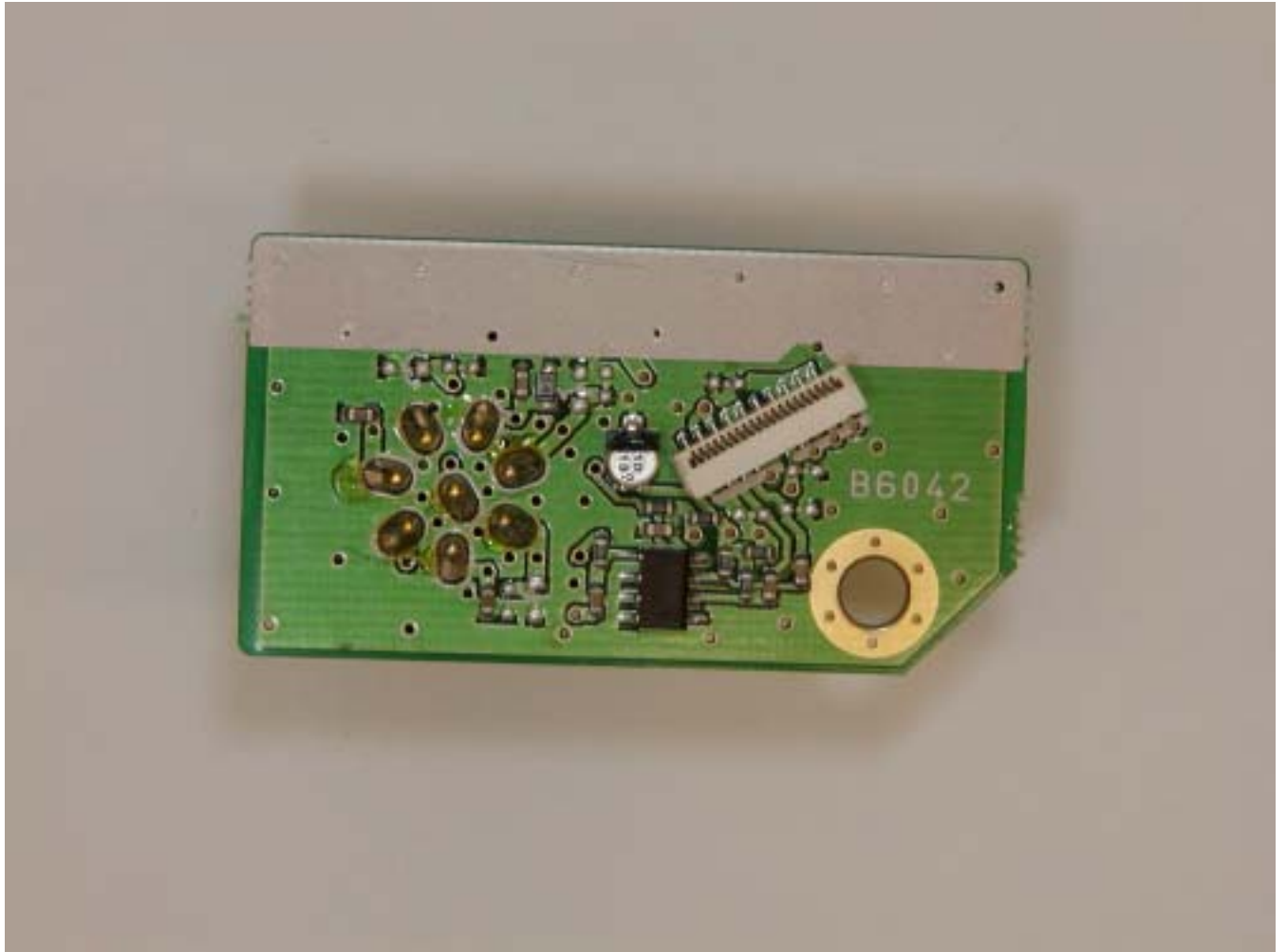
Rear view of main PCB



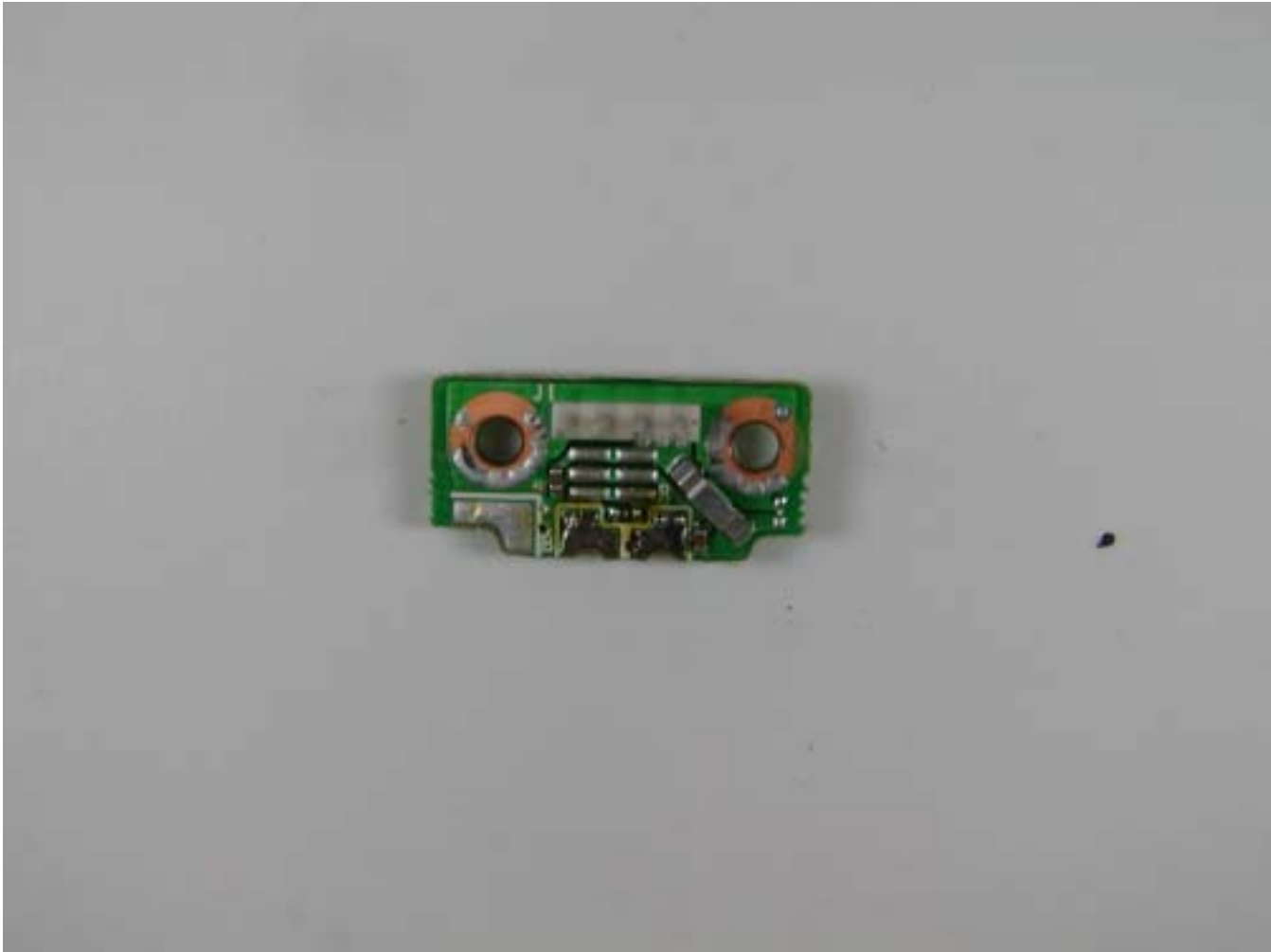
Control PCB - front view



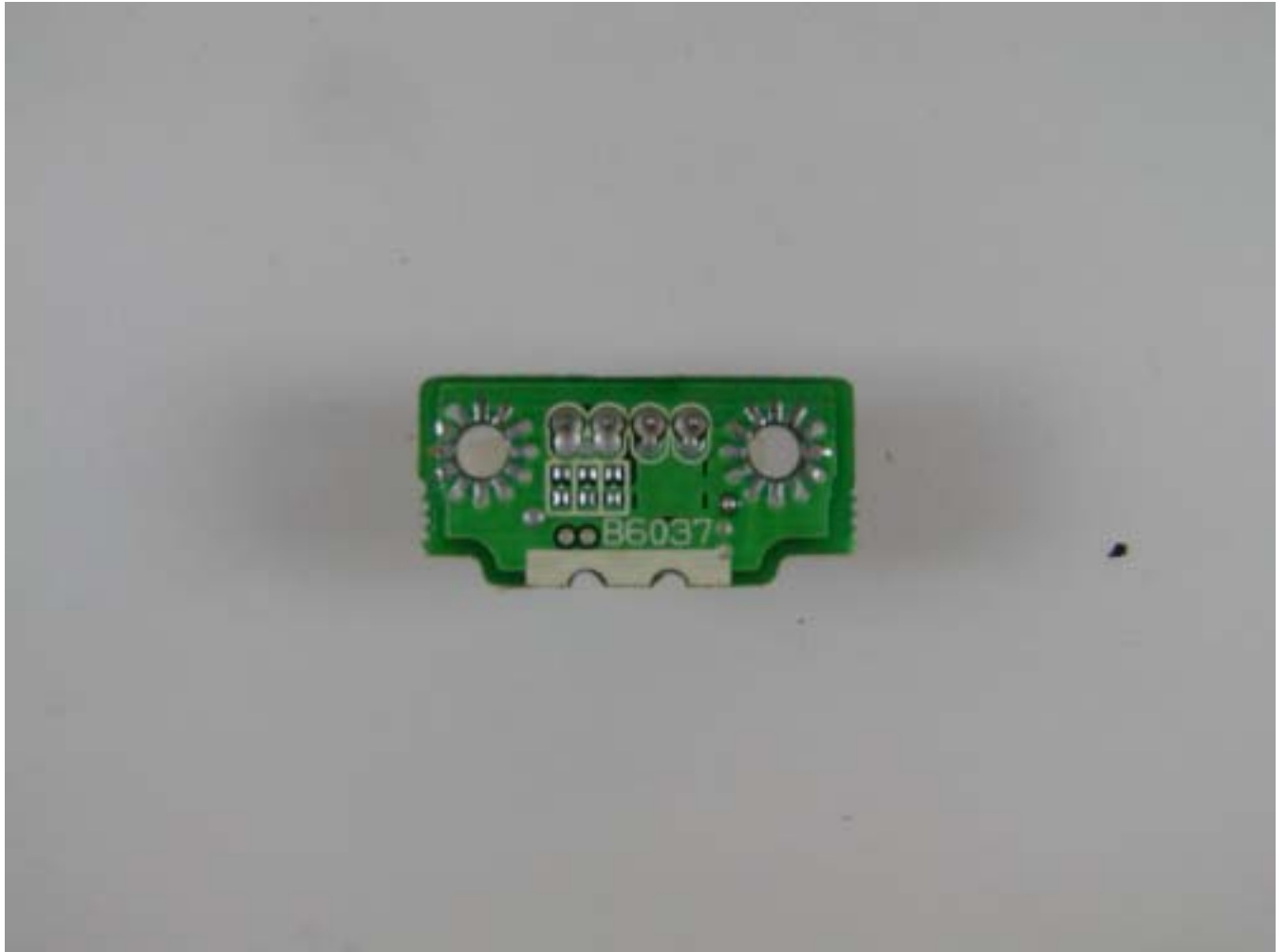
Control PCB - rear view



Power PCB - front view



Power PCB - rear view



Inside view of microphone



Microphone PCB - fron view





Microphone PCB - rear view

