

9 Photographs of equipment

Front view



Rear view



View from Left



View from right



View from top



View from bottom



Microphone - front view



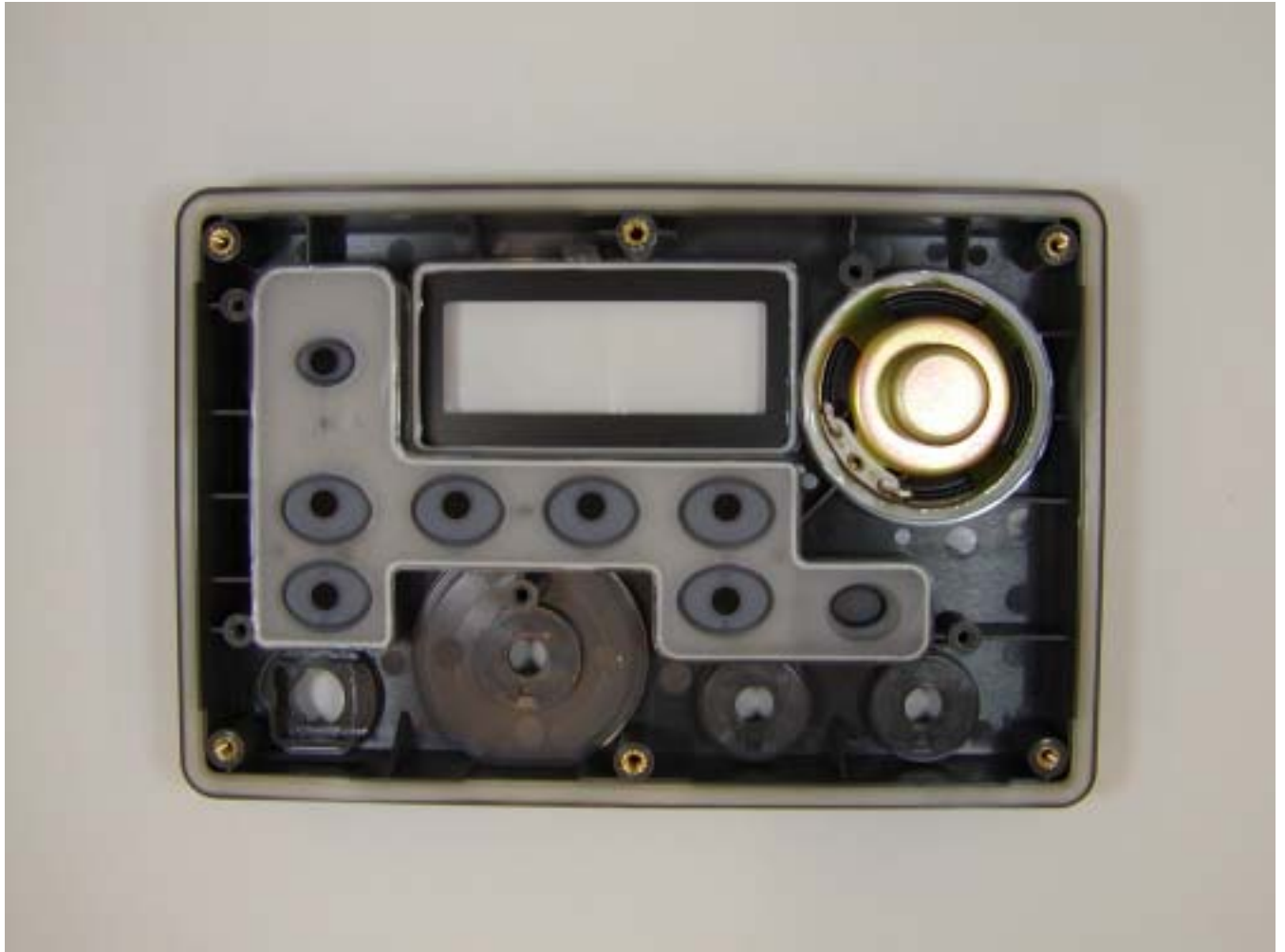
Microphone - rear view



Front panel -inside view



Front view with panel removed



Rear view of the front panel



Rear chassis showing main PCB



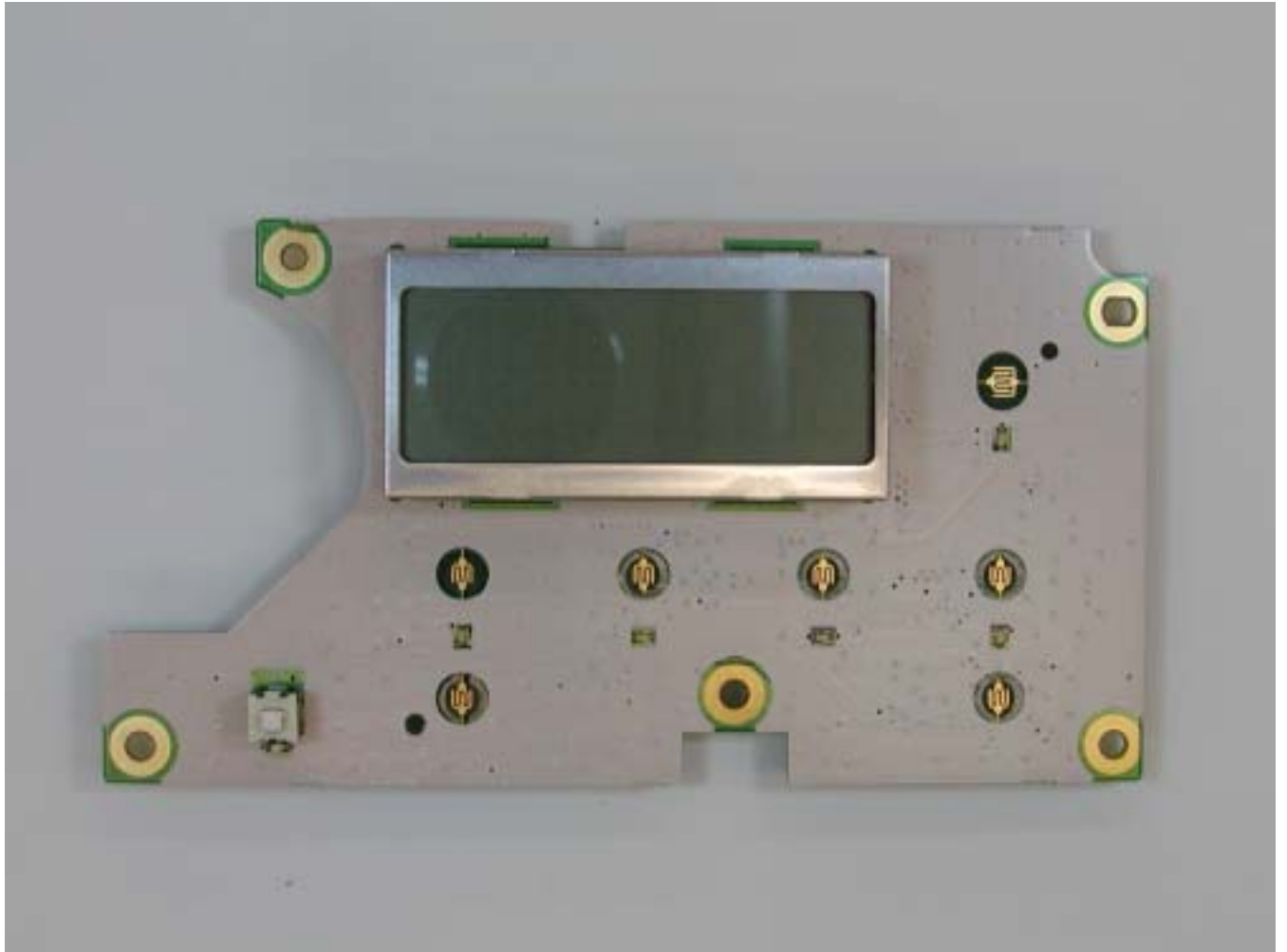
Rear chassis with main PCB removed



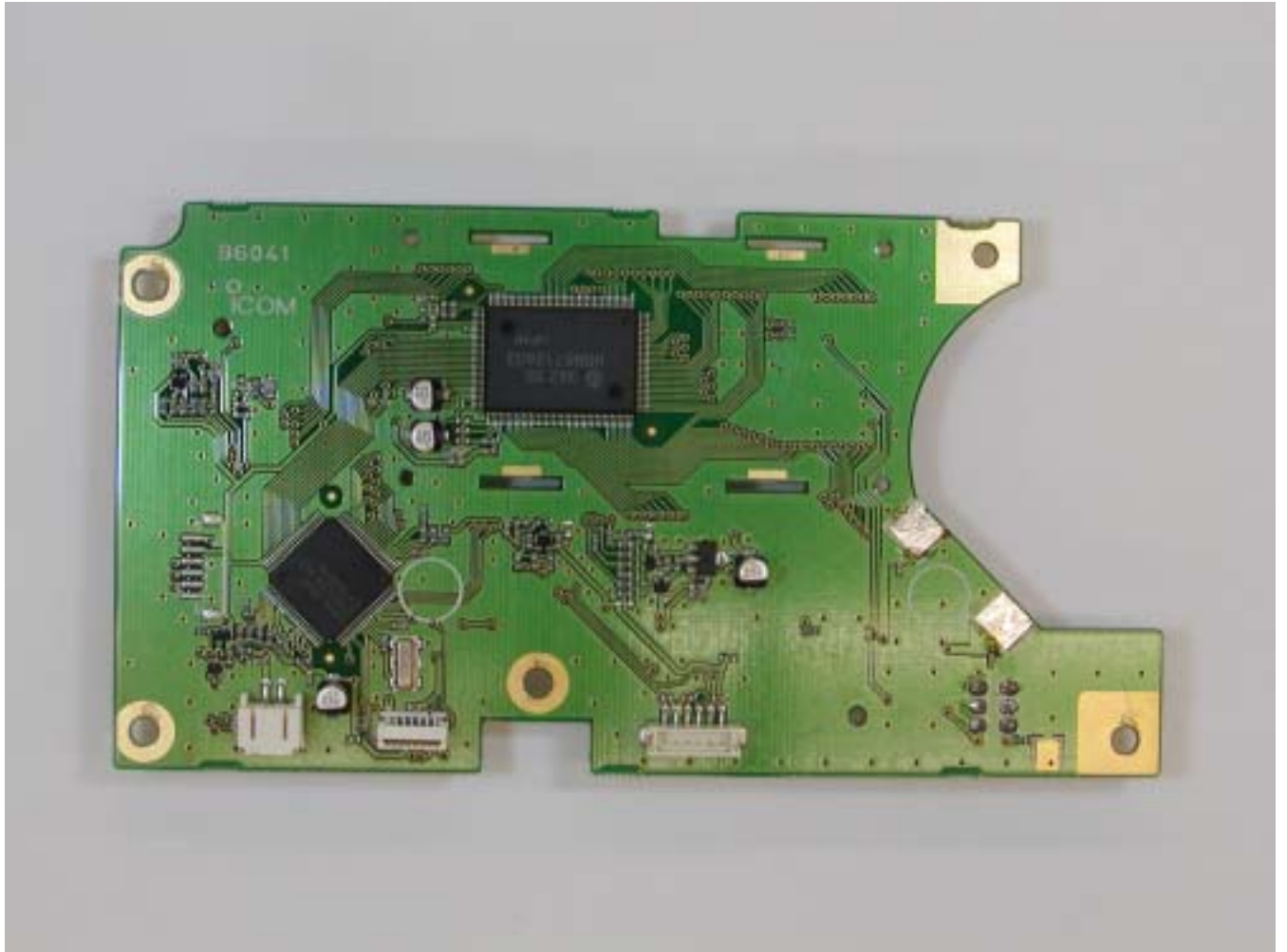
Rear chassis removing all PCBs



Logic PCB -front



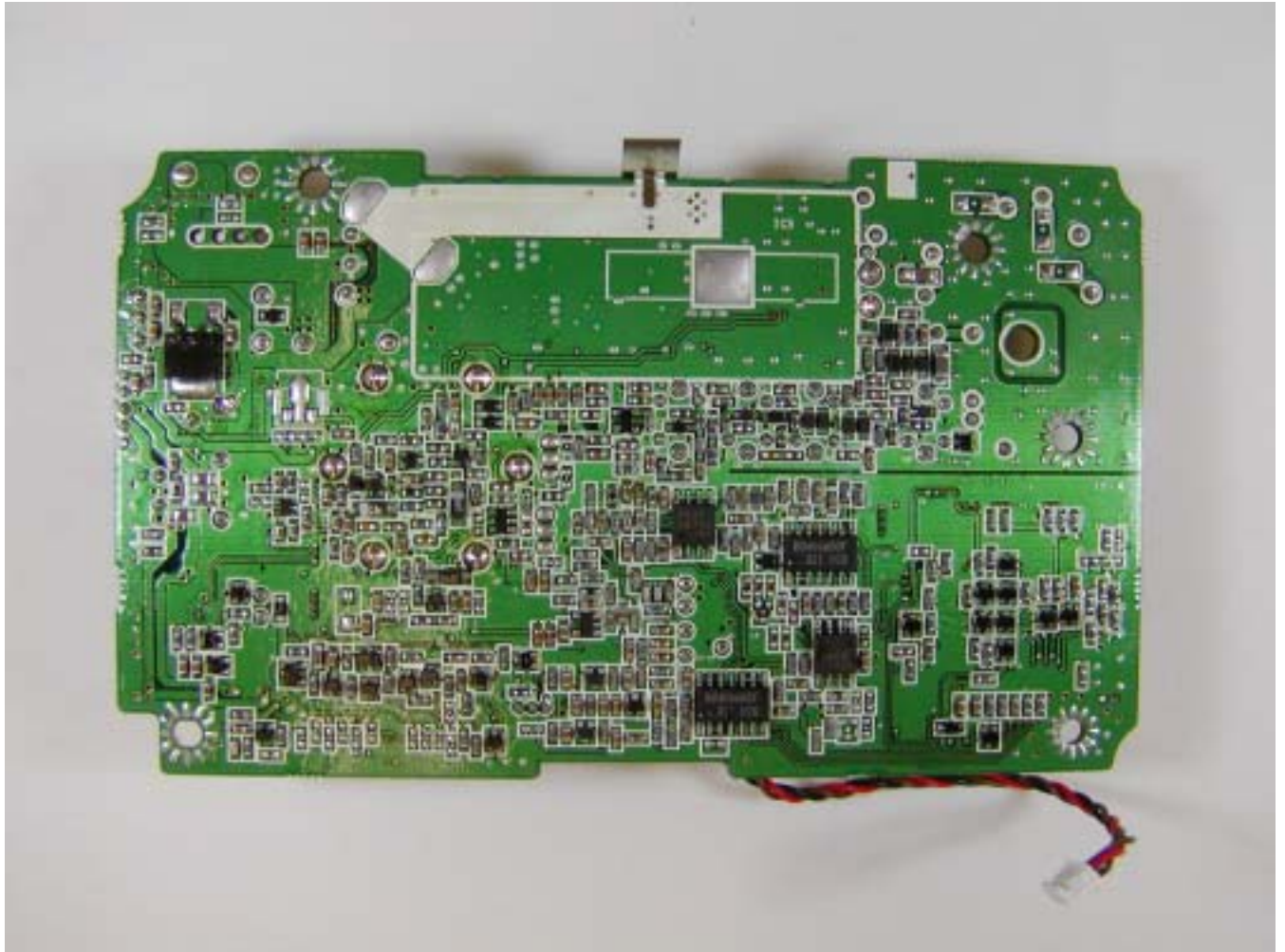
Logic PCB -rear



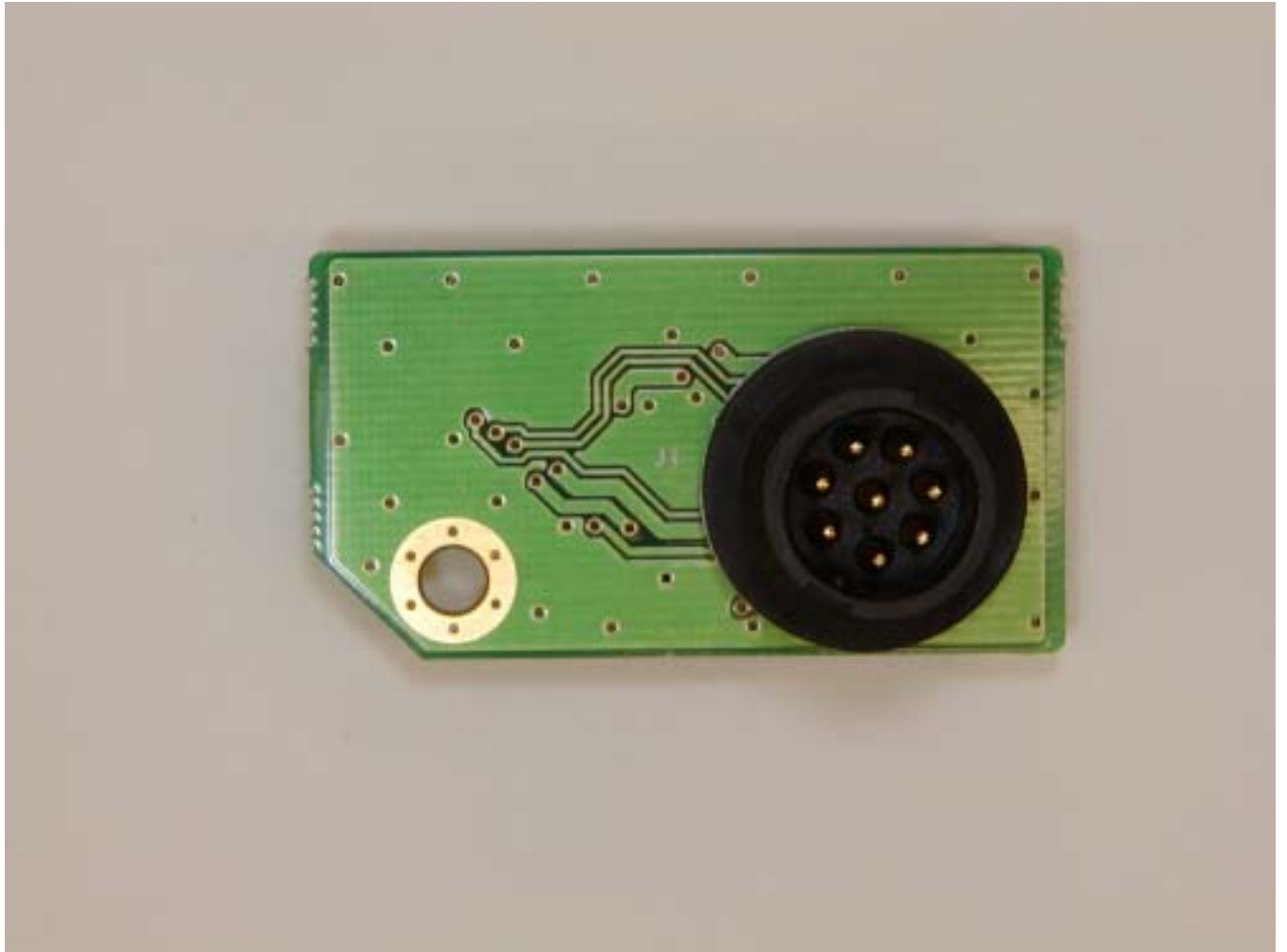
Main PCB - front view



Rear view of main PCB



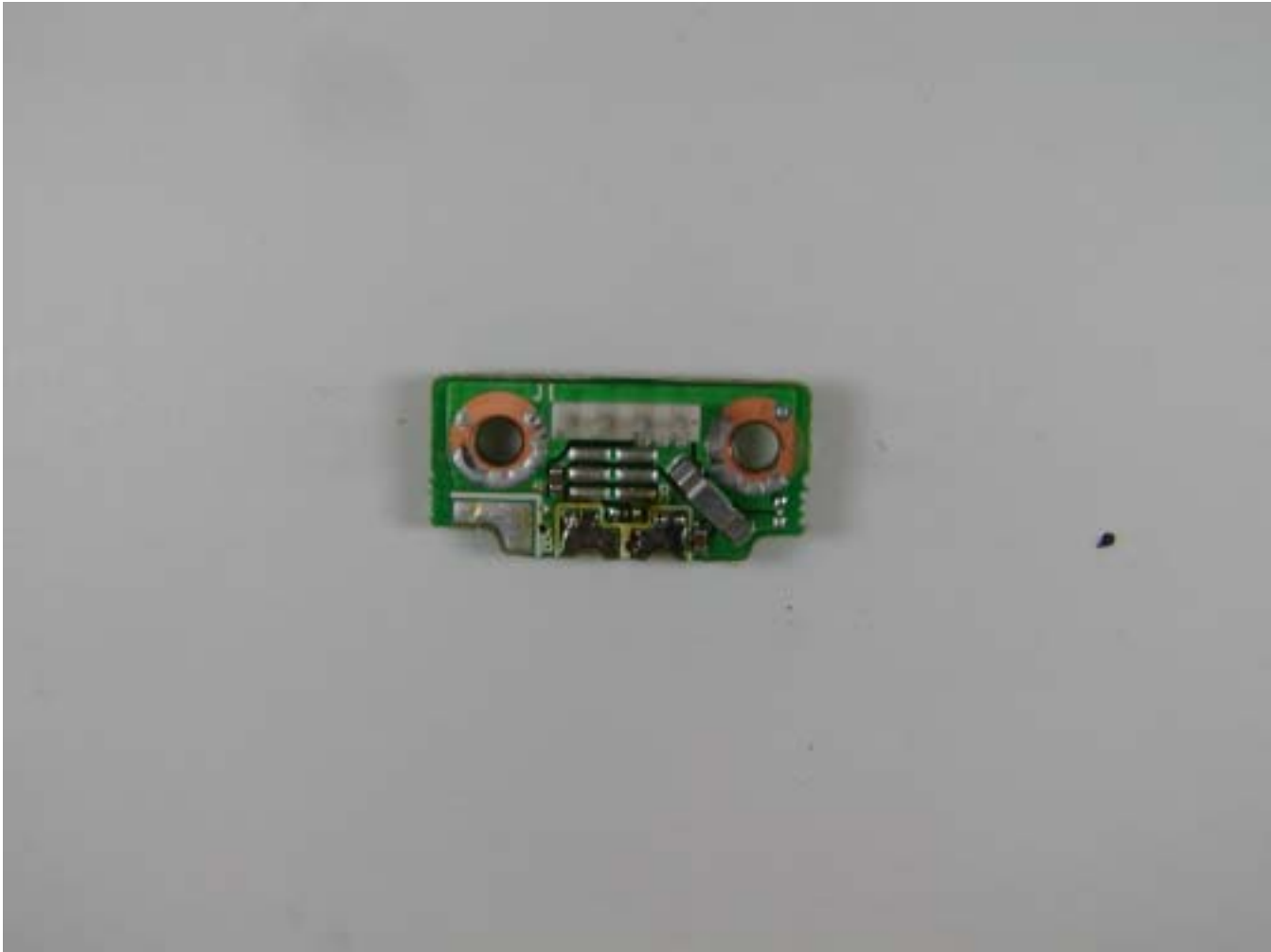
Control PCB - front view



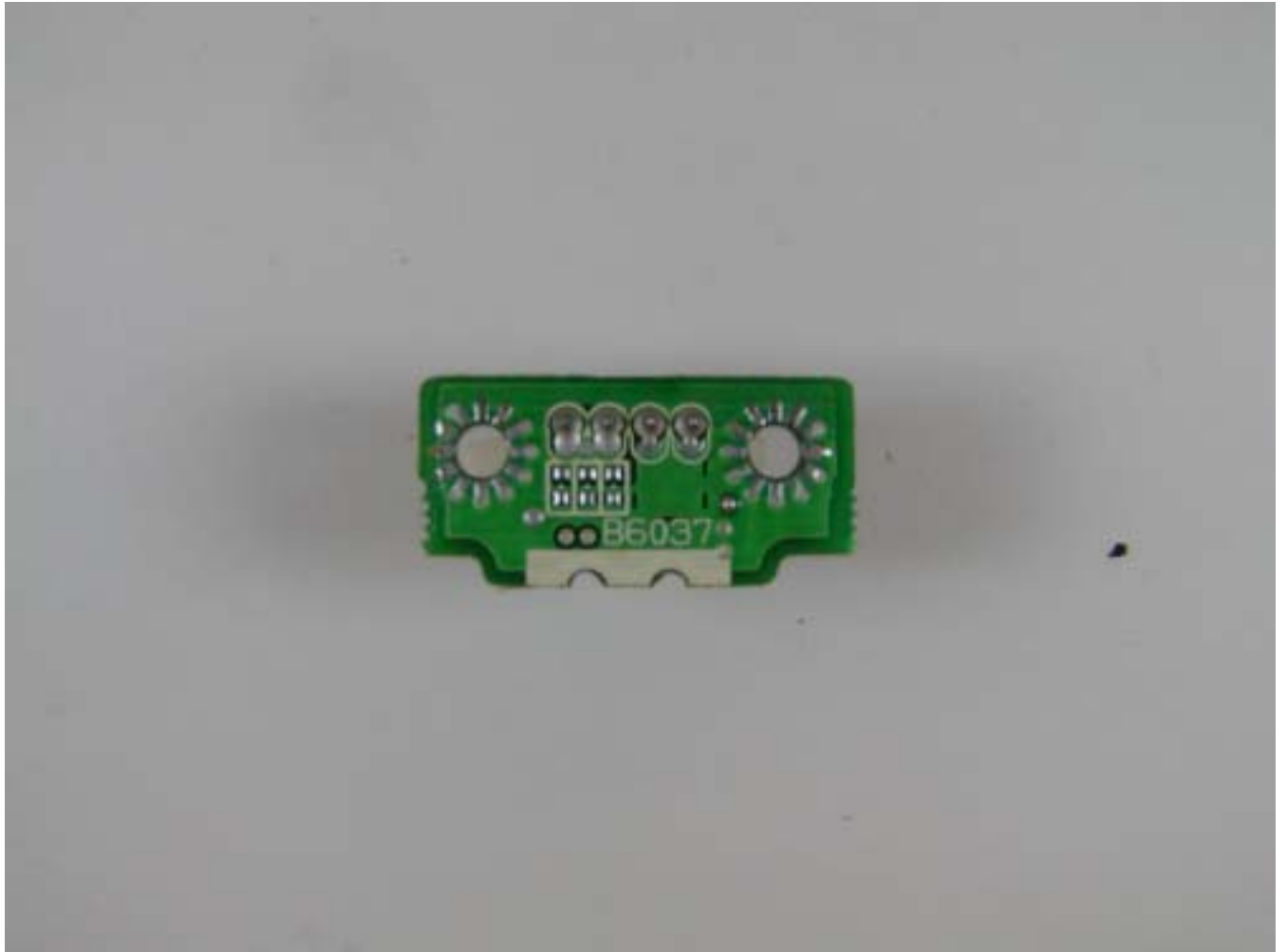
Control PCB - rear view



Power PCB - front view



Power PCB - rear view



Inside view of microphone



Microphone PCB - fron view



Microphone PCB - rear view

