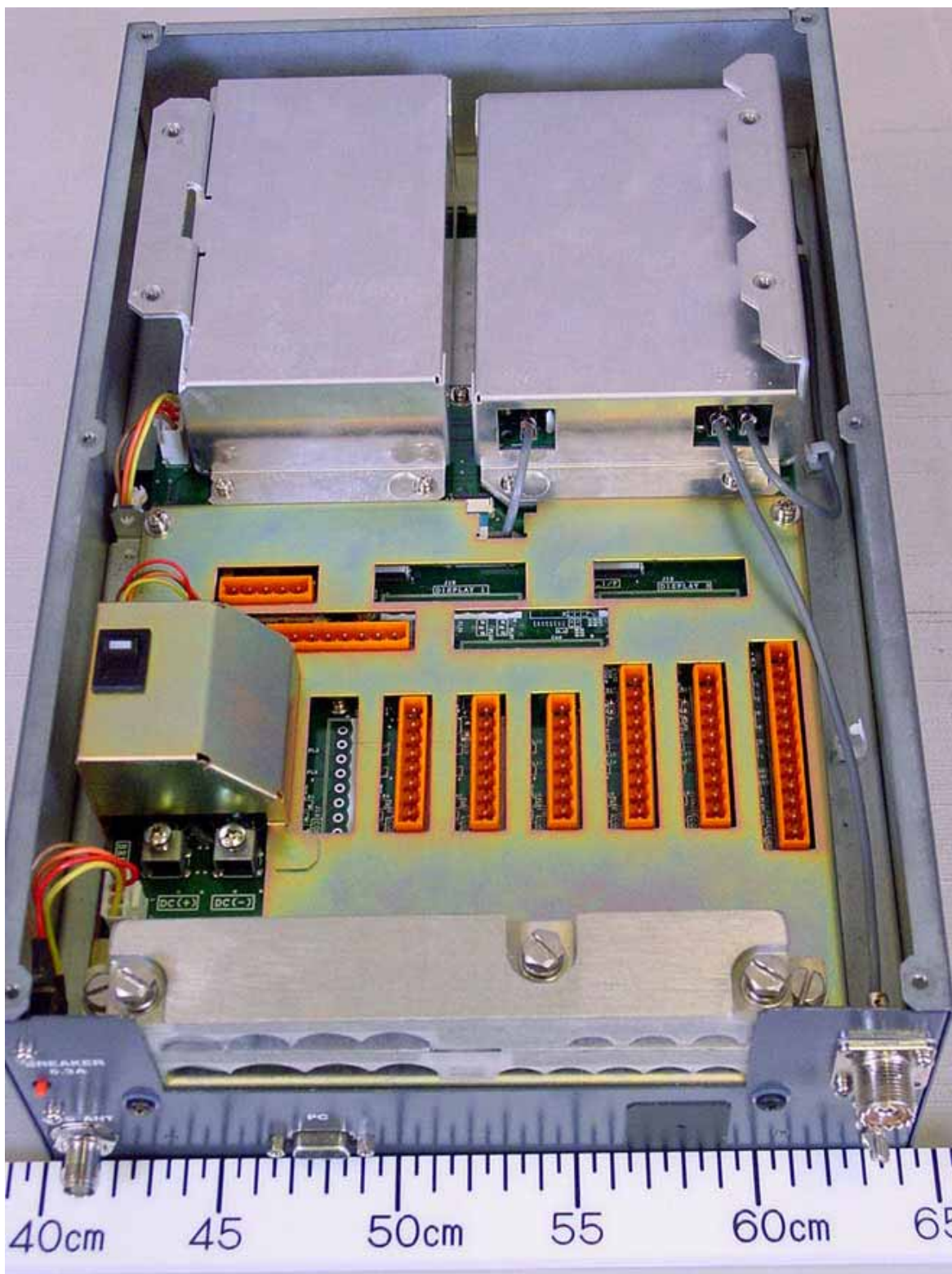


2 Internal View

2.1 Transponder Unit FA-1501

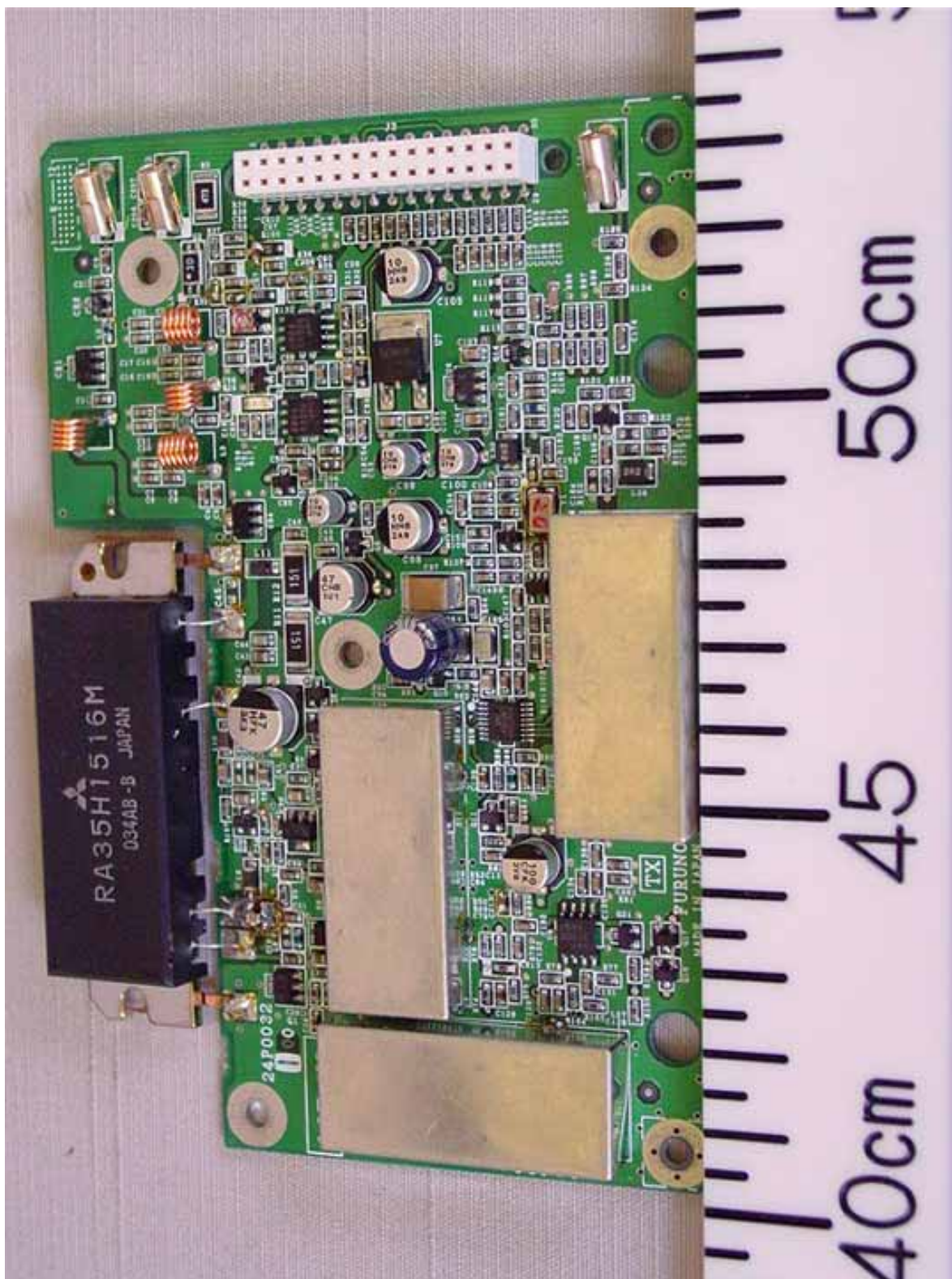
2.1.1 Inside Top View (with Top cover removed, showing MOT Board 24P0036 (lower))



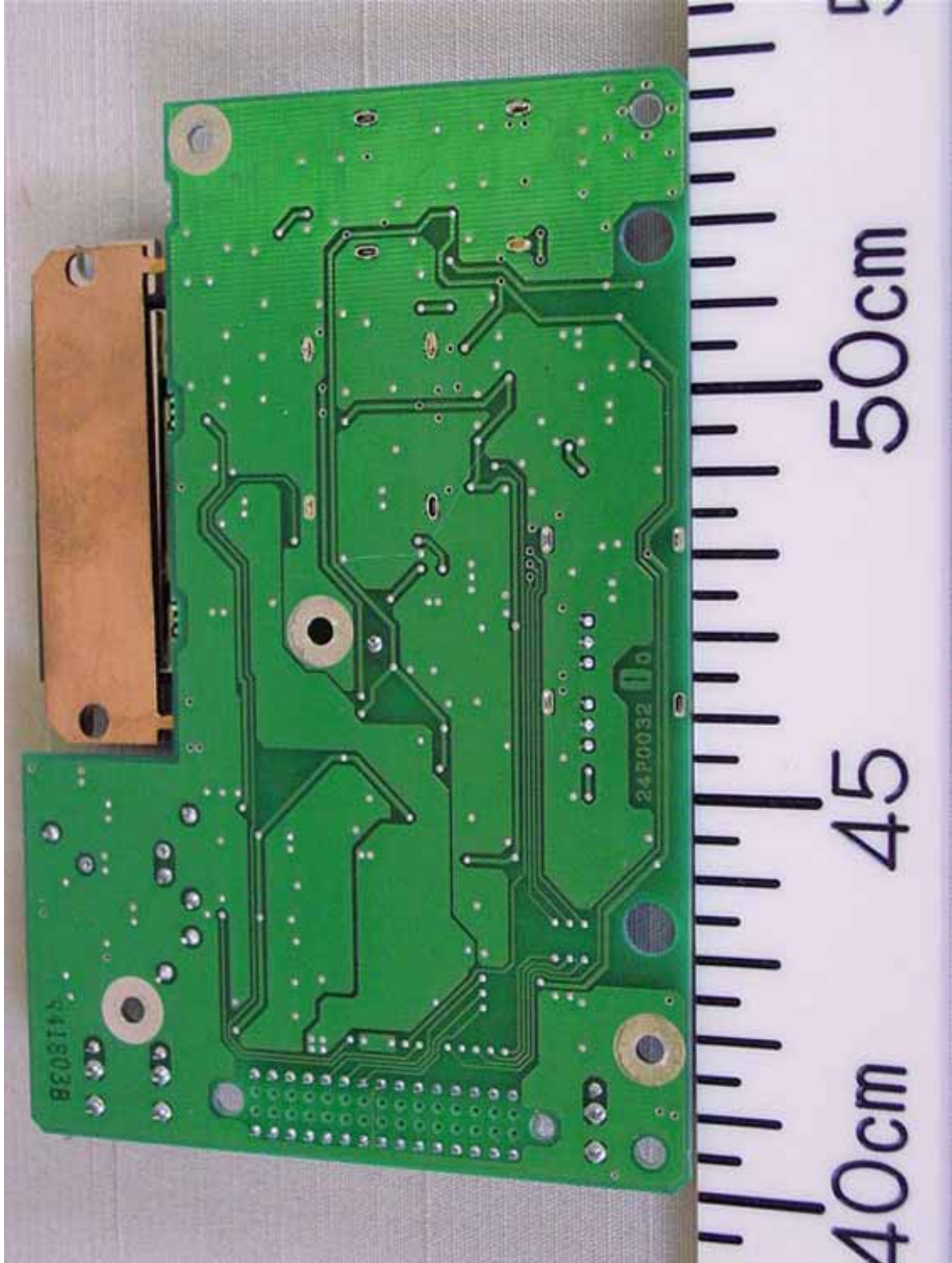
2.1.2 Inside View (with Top cover and shield-covers removed, showing TX Board 24P0032 (upper right), PWR Board 24P0037 (upper left), MOT Board 24P0036 (lower))



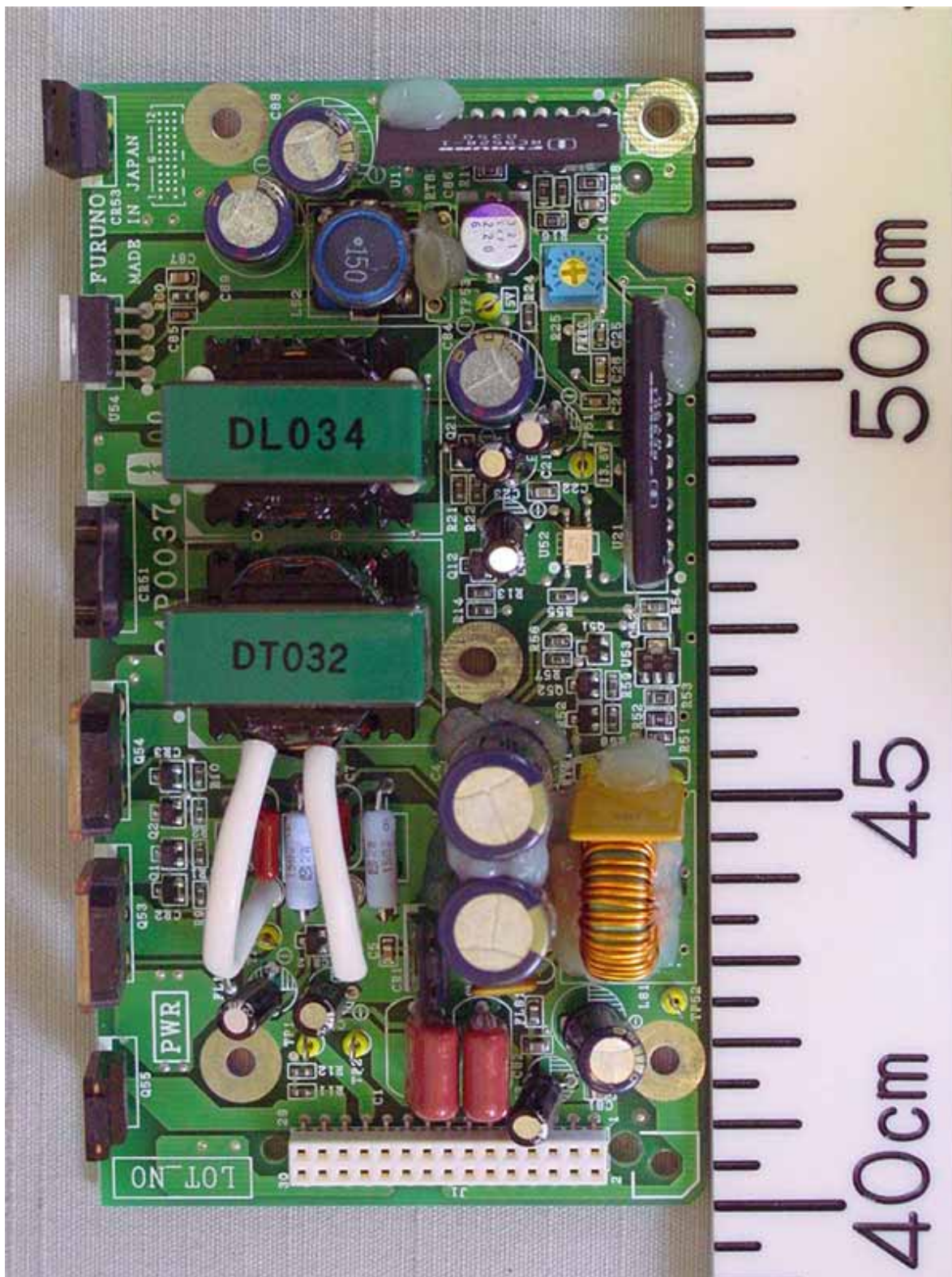
2.1.3 TX Board 24P0032 Front side



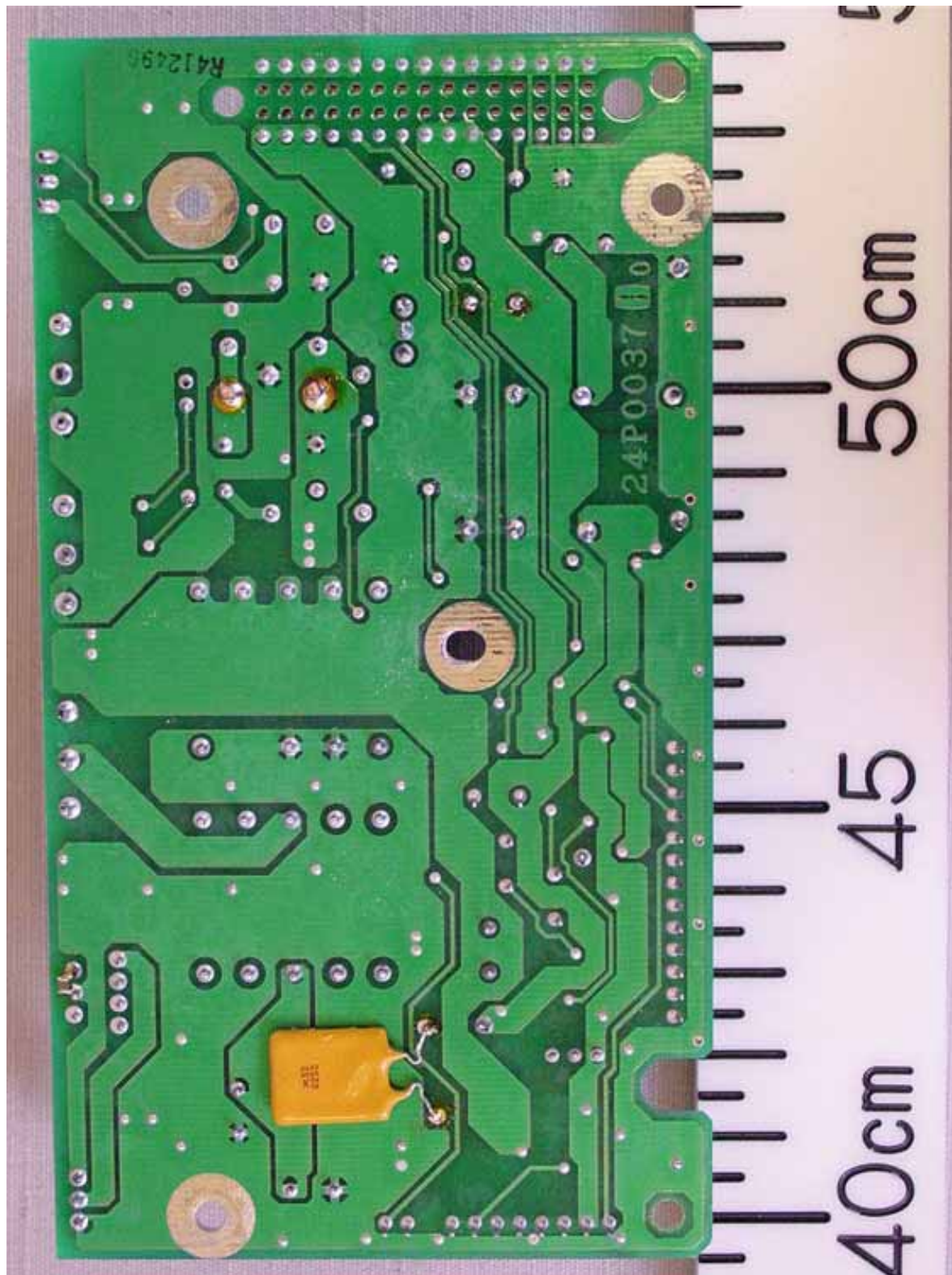
2.1.4 TX Board 24P0032 Rear side



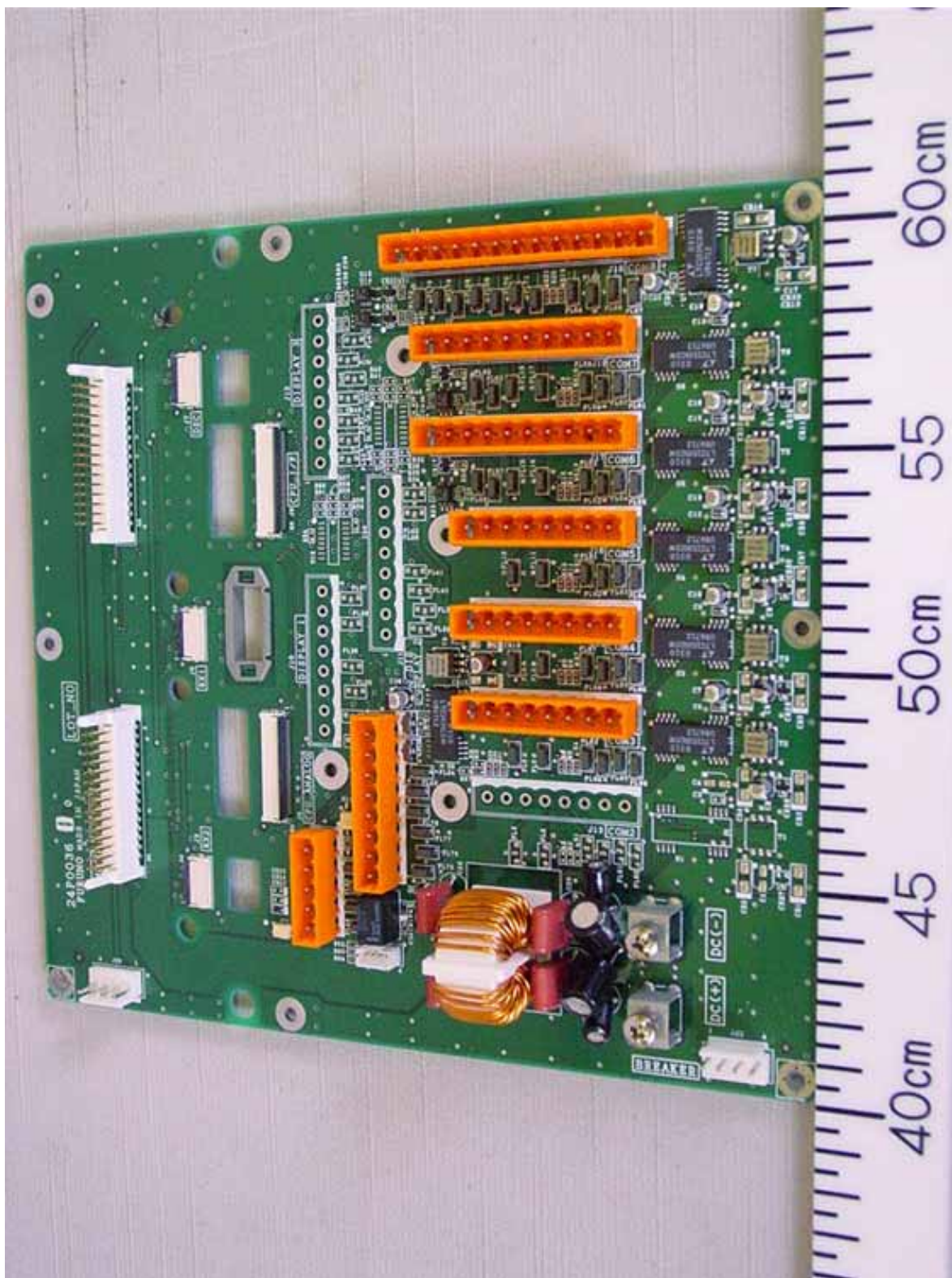
2.1.5 PWR Board 24P0037 Front side



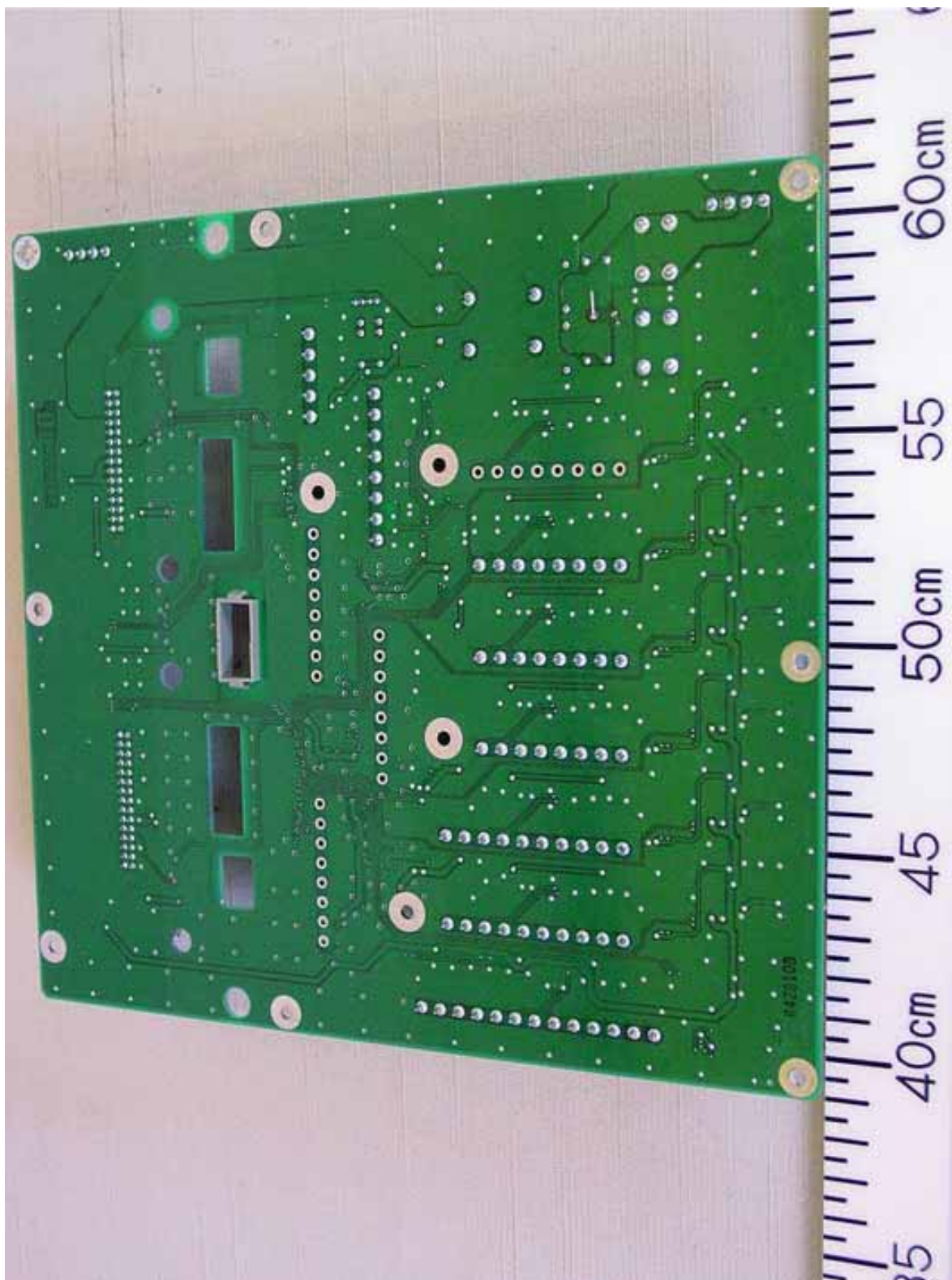
2.1.6 PWR Board 24P0037 Rear side



2.1.7 MOT Board 24P0036 Front side



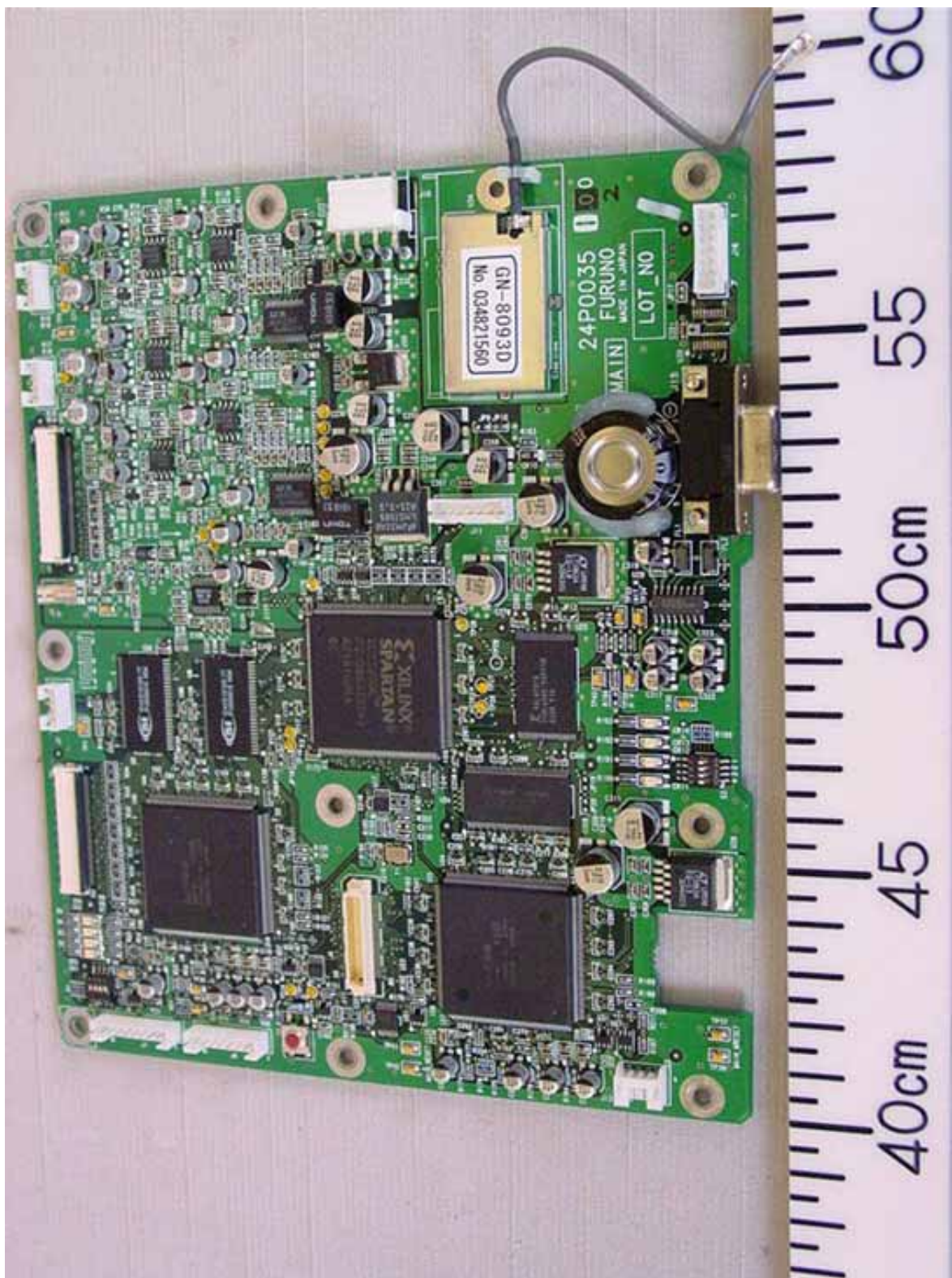
2.1.8 MOT Board 24P0036 Rear side



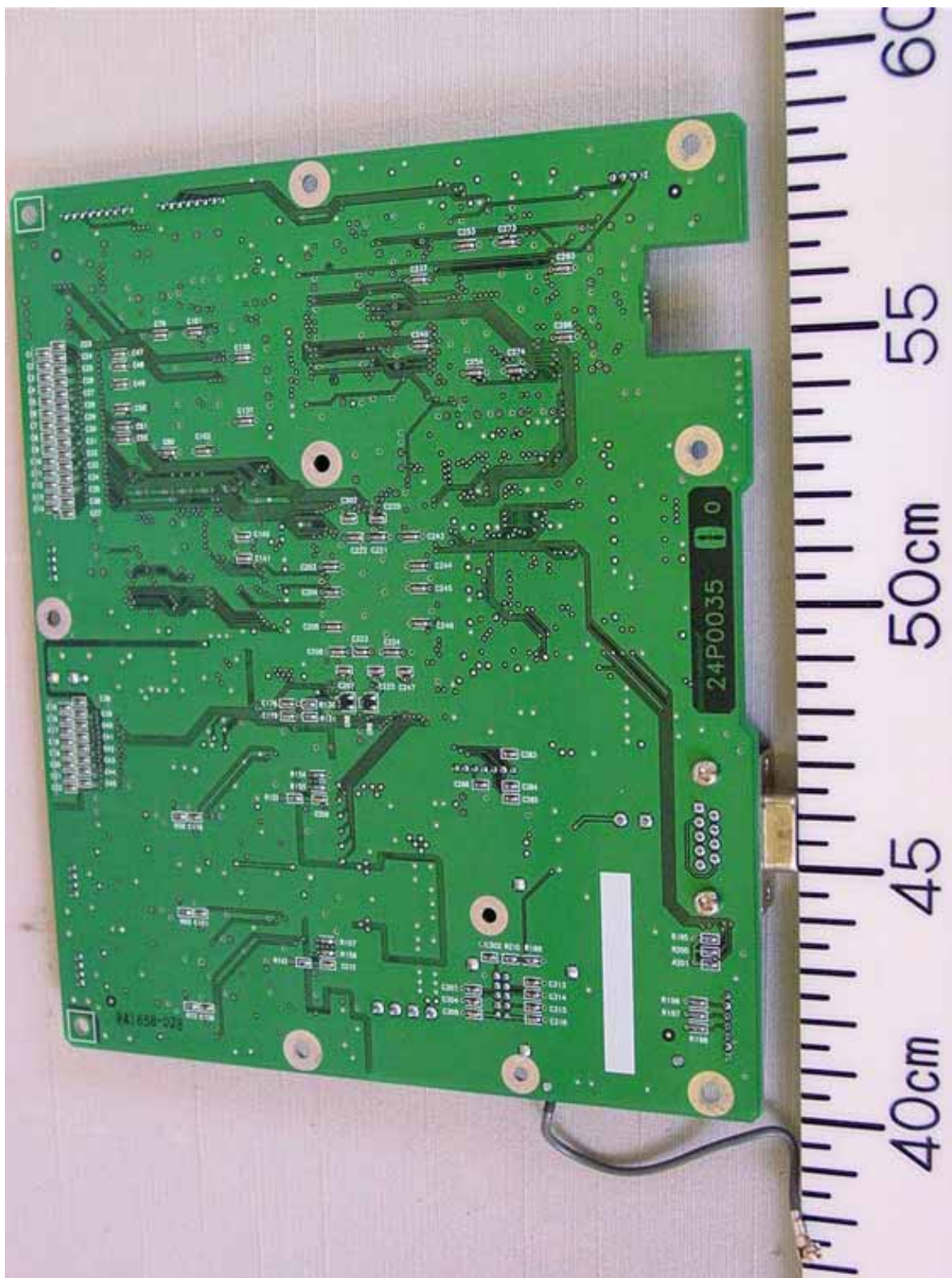
2.1.9 Inside Bottom View (with Bottom cover removed, showing RX2 Board 24P0033 (upper right), RX1 Board 24P0033 (upper center), DSC Board 24P0034 (upper left) and MAIN Board 24P0035 (lower))



2.1.10 MAIN Board 24P0035 Front side



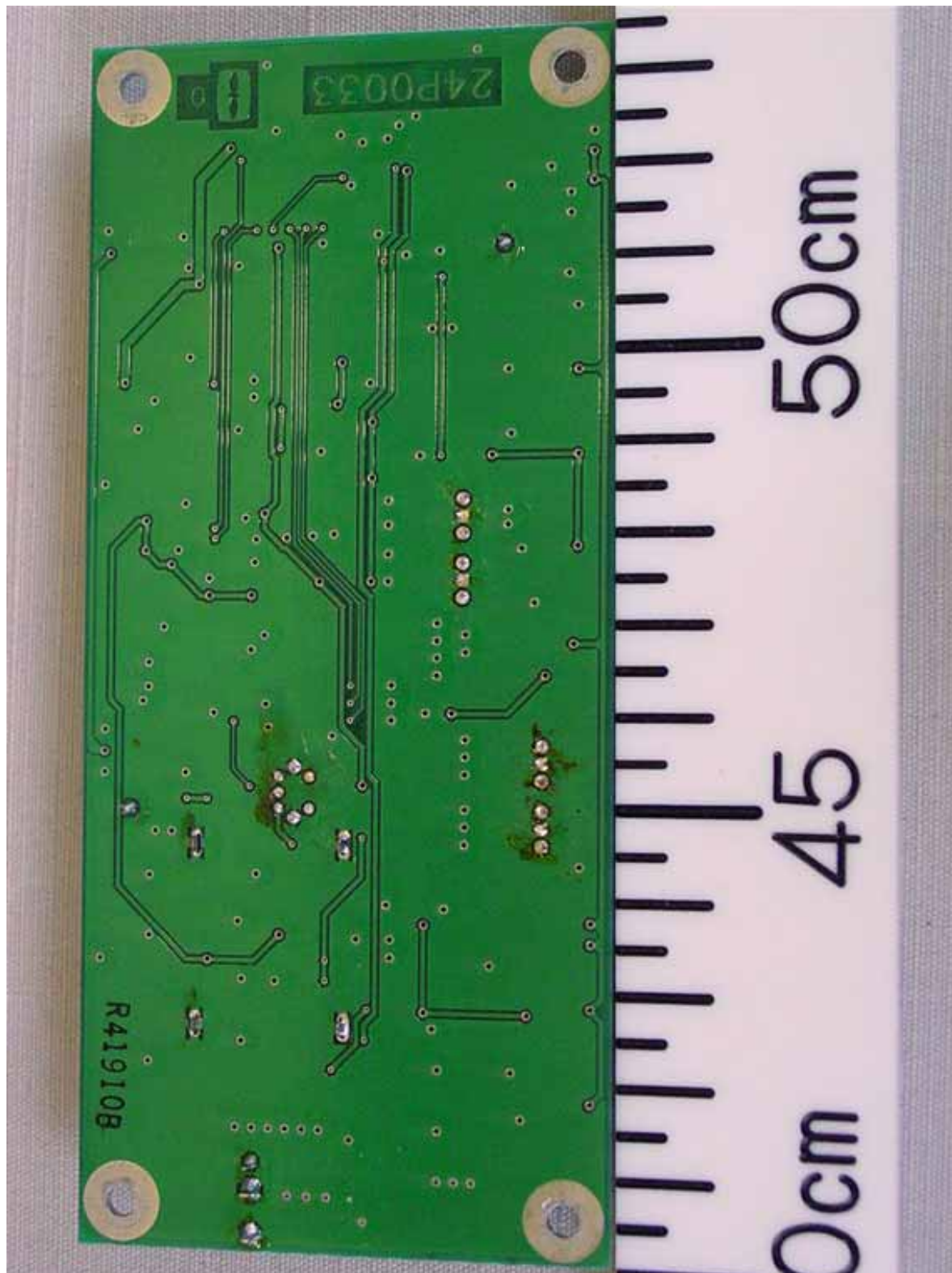
2.1.11 MAIN Board 24P0035 Rear side



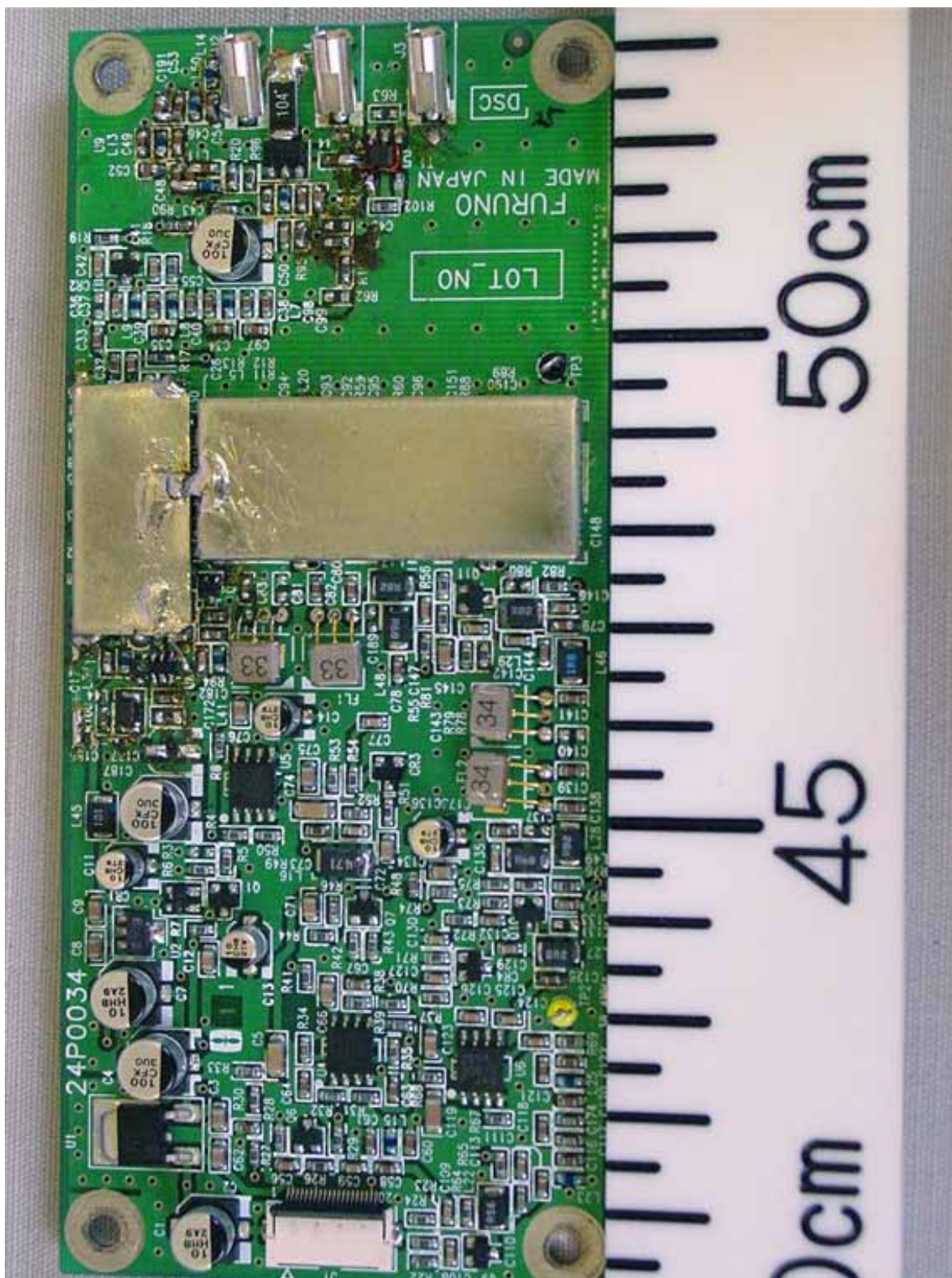
2.1.12 RX1 (RX2) Board 24P0033 Front side



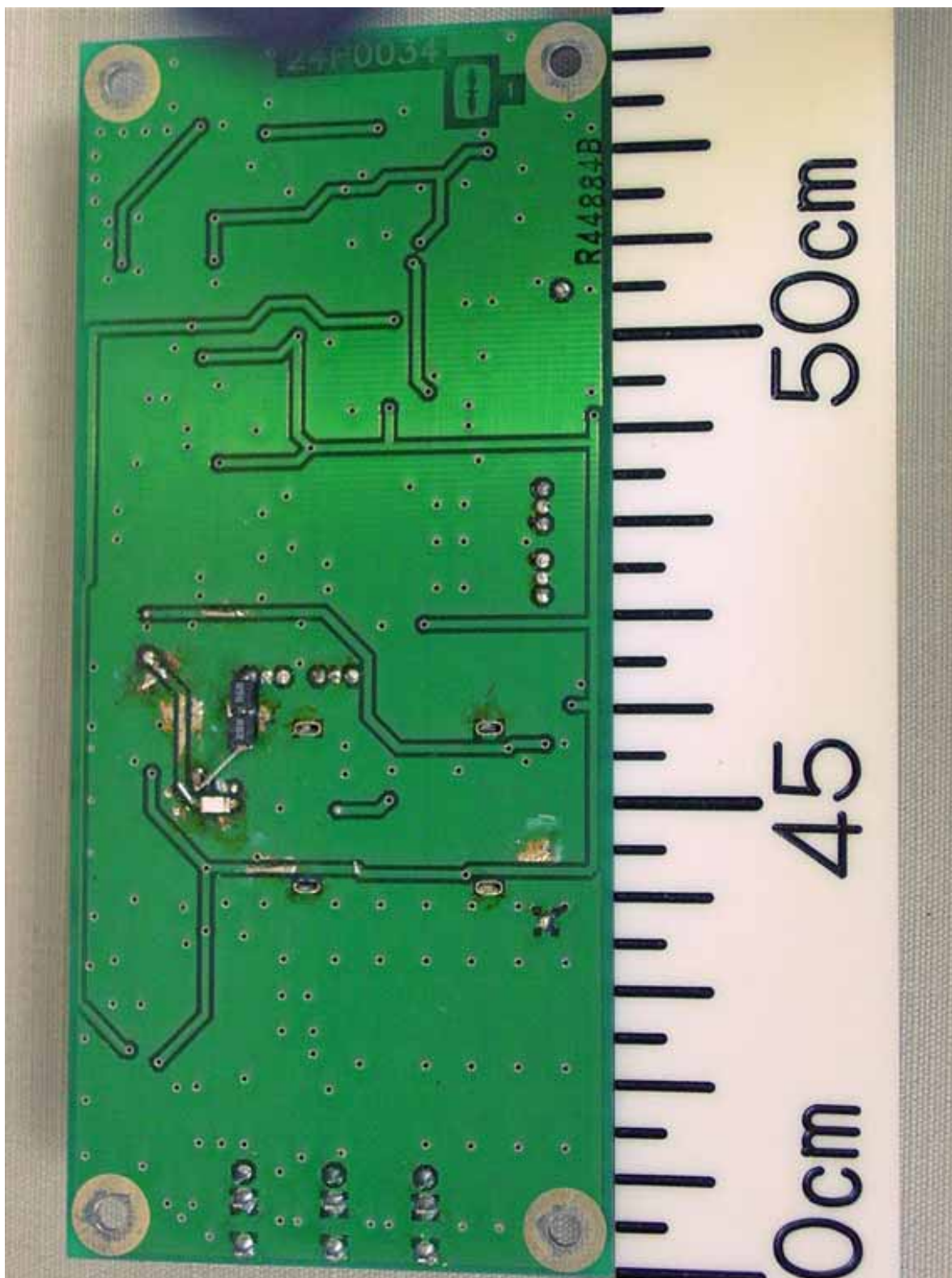
2.1.13 RX1 (RX2) Board 24P0033 Rear side



2.1.14 DSC Board 24P0034 Front side

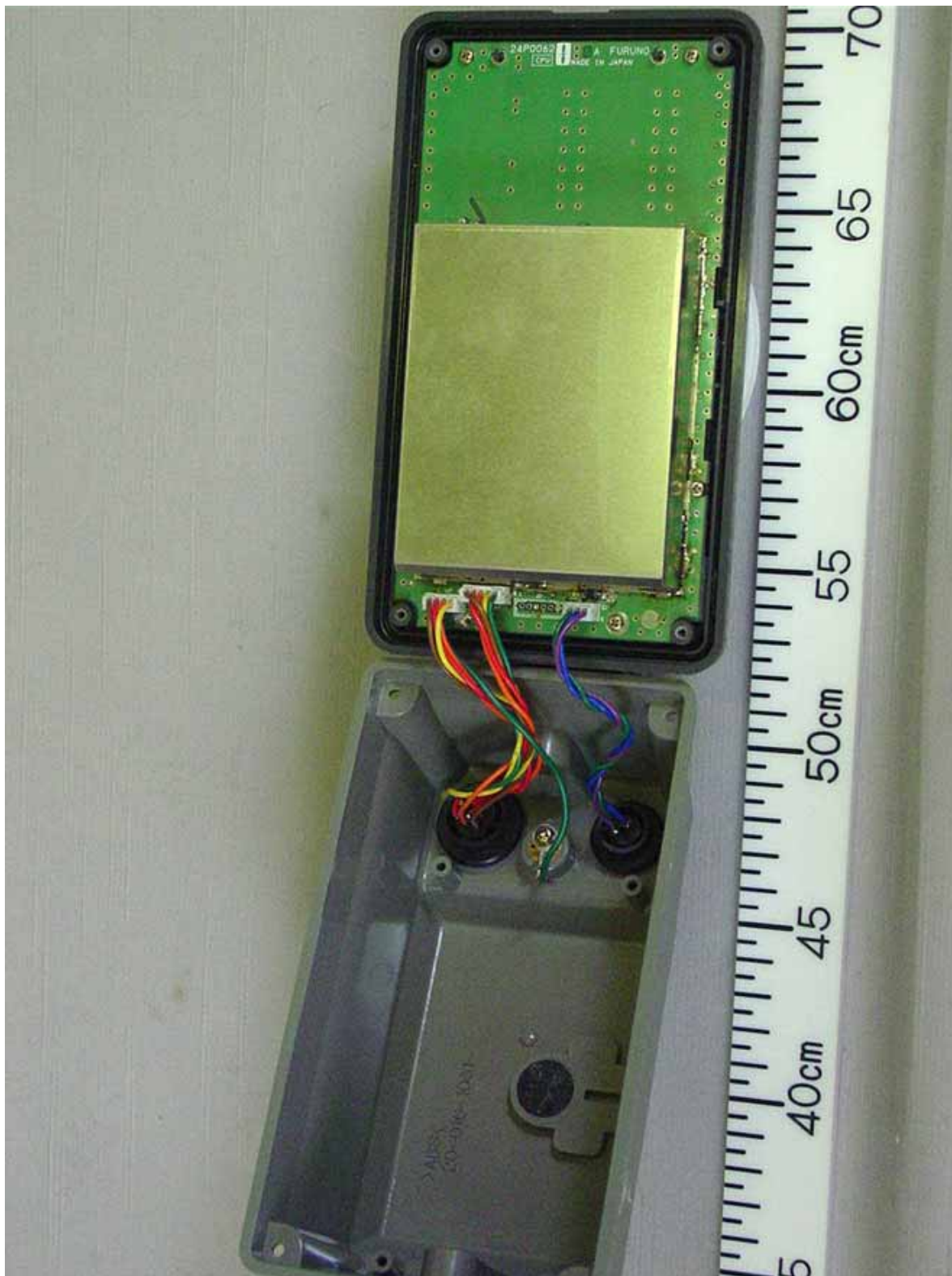


2.1.15 DSC Board 24P0034 Rear side

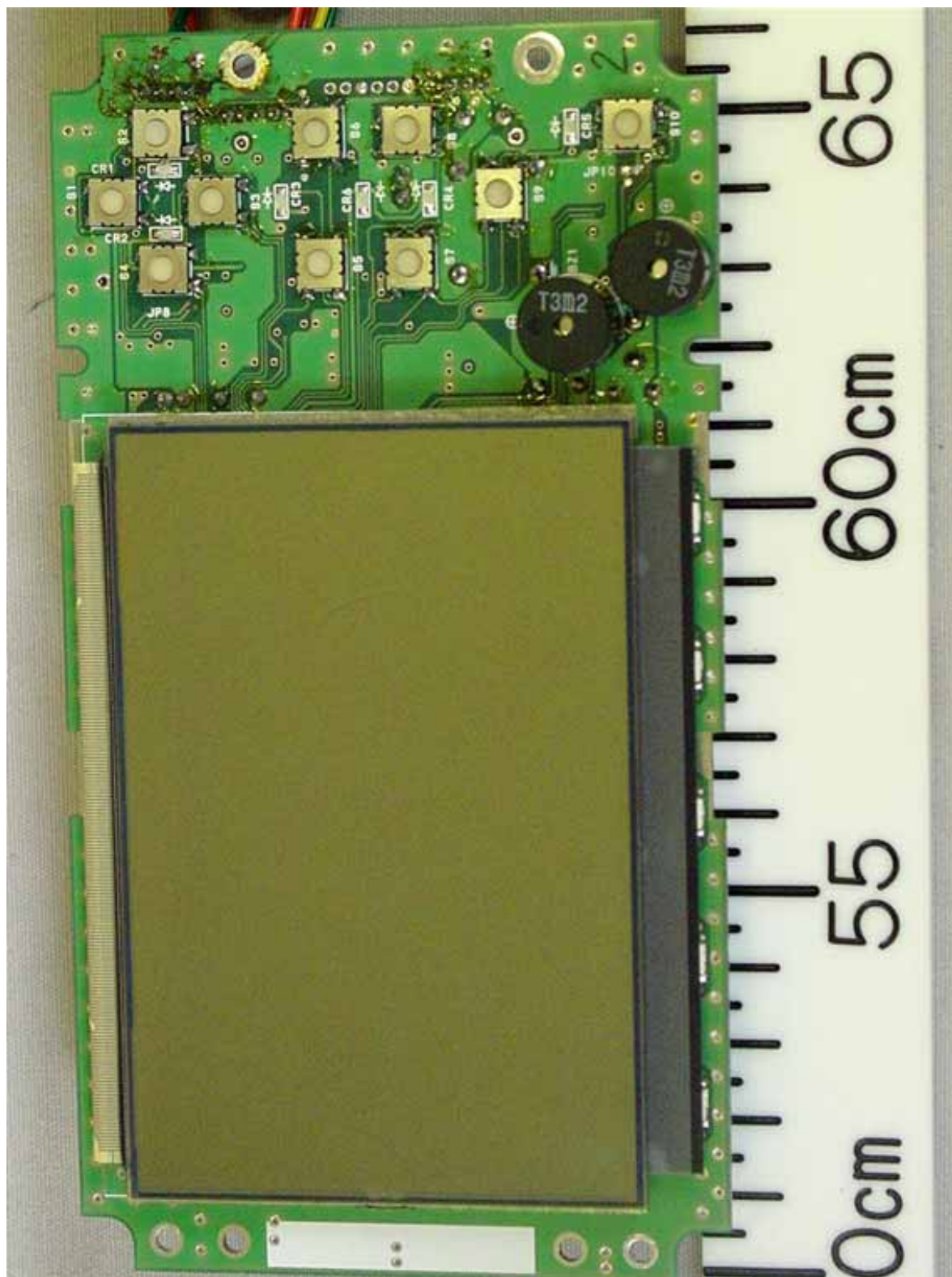


2.2 Monitor unit FA-1502

2.2.1 Inside View (Showing CPU Board 24P0062 Rear side)



2.2.2 CPU Board 24P0062 Front side



2.2.3 CPU Board 24P0062 Rear side

