

REVISION HISTORY - ALL SHEETS ARE THE SAME REVISION STATUS			
REV	ZONE	DESCRIPTION	ECN MEMO
I	N/A	PRELIMINARY RELEASE	R052466 9/23/08 P.S. ALEXANDER
A	N/A	BOTH ANTENNA CABLES WITH HEATSHRINK TUBING ARE ROUTED ON TOP OF MAIN PWA. CABLE CONNECTION TO J10 WAS J11. CABLE CONNECTION TO J11 WAS J10. DELETED HEATSHRINK TUBING WAS BALLOON 8 DELETED CABLE MODIFICATION VIEW (SHT 2)	C309805 10/21/08 P.S. ALEXANDER

TAB -001 SHOWN (FRONT VIEW EXPLODED)

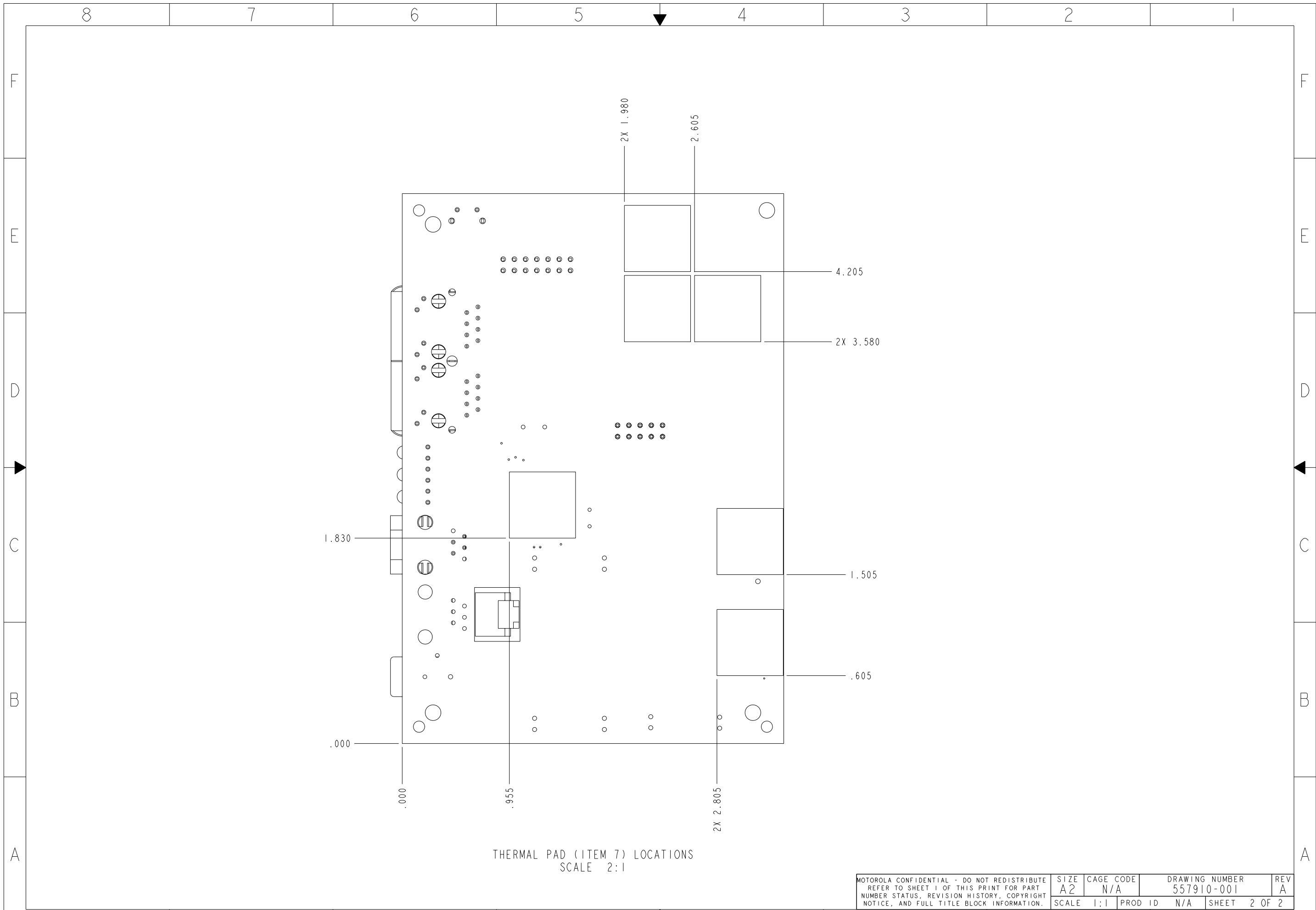
TAB -001 SHOWN (REAR VIEW EXPLODED)

- NOTES:
- TORQUE ITEM 3 TO 1-2 IN.-LBS.
  - TORQUE ITEM 6 TO 4-6 IN.-LBS.
  - AFFIX LABELS (ITEMS 8 AND 9) APPROXIMATELY WHERE SHOWN. MATING SURFACES MUST BE FREE OF ALL CONTAMINATION.

CONTROLLED AND REPORTABLE MATERIALS DISCLOSURE (GLOBAL COMPLIANCE)

COMPONENT SUPPLIED MUST BE COMPLIANT TO APPENDIX C, SECTION 2, GLOBAL COMPLIANCE ACCEPTANCE CRITERIA OF THE MOTOROLA I2G02897W18 "CONTROLLED AND REPORTABLE MATERIALS DISCLOSURE SPECIFICATION". SUPPLIER MUST COMPLETE A COMPLIANCE CONNECT MATERIAL DECLARATION ("CSX" SPREADSHEET) FOR THE COMPONENT SUPPLIED USING THE AIAG COMPLIANCE CONNECT W18 ELECTRONIC REPORTING TOOL. BOTH OF THESE DOCUMENTS CAN BE ACCESSED AT THE FOLLOWING URL: <http://www.motorola.com/content.jsp?globalObjectId=8300>

UNITS inch	STANDARD TOLERANCES	MOTOROLA CONFIDENTIAL - DO NOT REDISTRIBUTE COPYRIGHT 2008 MOTOROLA INFORMATION CONTAINED ON ALL SHEETS OF THIS PRINT CANNOT BE REPRODUCED OR USED, IN WHOLE OR IN PART, WITHOUT MOTOROLA'S CONSENT. THIS NOTICE DOES NOT IMPLY PUBLICATION.	DESIGNED BY P.S. ALEXANDER 8/25/08					
INTERPRET DIM AND TOL PER ASME Y14.5M-1994	6 SIGMA TOLERANCE UNLESS OTHERWISE SPECIFIED	THIRD ANGLE PROJECTION	DRAWN BY P.S. ALEXANDER 8/25/08					
1 PLACE X.X ±0.1	2 PLACE X.XX ±0.01	3 PLACE X.XXX ±0.005	ANGLE DIM X° ±0.5	APPROVED BY B. STORTI 8/25/08	TITLE FINAL ASSEMBLY, MC-802, ALADDIN WIRELESS ACS PT CPE, RoHS			
				MATERIAL: SEE SEPARATE PARTS LIST	SIZE A2	CAGE CODE N/A	DRAWING NUMBER 557910-001	REV A
				FINISH: N/A	SCALE 1:1	PROD ID N/A	SHEET 1 OF 2	



COMPUTER GENERATED PRINT  
DO NOT SCALE  
DO NOT REVISE MANUALLY