

Ambient operating temperature	0 °C to +40 °C
Voltage	100-240 V~, 50/60 Hz, 1A max
Power supply unit	This Class II product, VIP7300, shall be powered by the Limited Power Supply that is provided together with the product.
Maximum Power consumption	12 W

The following table shows the maximum EU RF Output Power:

Frequency Band (GHz)	Maximum RF Power (dBm)
2.4 to 2.48	10
5.150 – 5.350*	23
5.470 – 5.725	23

*Indoor use only BE, BG, CZ, DK, DE, EE, IE, EL, ES, FR, HR, IT, CY, LV, LT, LU, HU, MT, NL, AT, PL, PT, RO, SI, SK, FI, SE, and UK(NI).

Hereby, ARRIS declares that the radio equipment type VIP7300 is in compliance with Directive 2014/53/EU. The full text of the EU declaration of conformity is available at the following Internet address: <http://arris.com/consumers/eudoc>.

In accordance with Commission Regulation (EU) 2019/1782, energy efficiency data for the power supply provided with this product is available here: <https://www.commscope.com/consumers/psuinfo>.



Disabling Wireless: This equipment is dependent on wireless for primary operation. To disable wireless disconnect the product from power.

EU Compliance is maintained at the following address:
ARRIS Group B.V., Hoogoorddreef 5,
1101 BA Amsterdam-Zuidoost, The Netherlands

© 2022 CommScope, Inc. All rights reserved. ARRIS and the ARRIS Logo are trademarks of CommScope, Inc. and/or its affiliates. All other trademarks are the property of their respective owners. The terms HDMI, HDMI High-Definition Multimedia Interface, and the HDMI Logo are trademarks or registered trademarks of HDMI Licensing Administrator, Inc. Manufactured under license from Dolby Laboratories. Dolby, Dolby Audio, Pro Logic, and the double-D symbol are trademarks of Dolby Laboratories Licensing Corporation.

Caring for the Environment by Recycling

When you see this symbol on an ARRIS product, do not dispose of the product with residential or commercial waste. Some countries or regions have set up systems to collect and recycle electrical and electronic waste items. Recycling information can be obtained from the WEEE recycling section at www.CommScope.com.

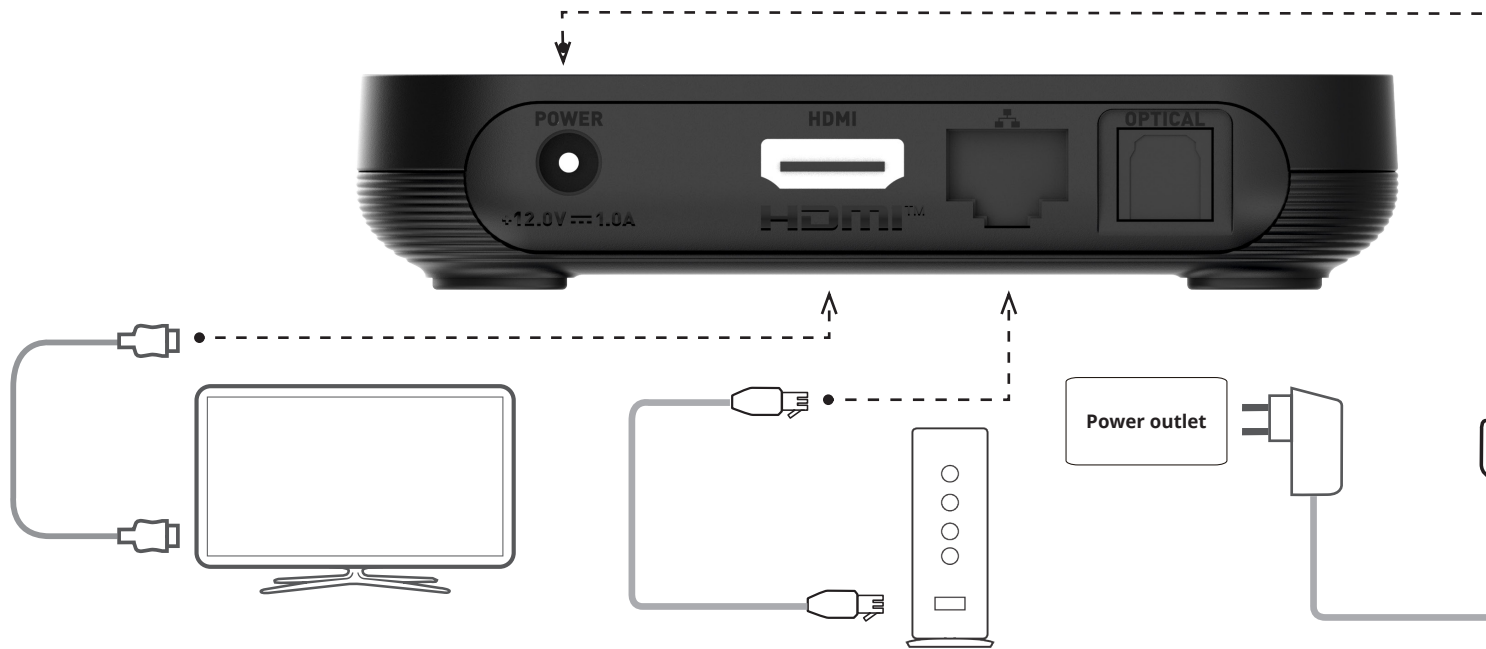
Please recycle product packaging and this document.



VIP7300

Set-top box
Installation Guide

INSTALLING YOUR SET-TOP BOX



NOTE:

Do not use any power supply other than the one supplied with the product. Doing so may cause fire or seriously damage your set-top box.

1

Connect one end of the HDMI cable to the **HDMI** port on your set-top box and the other end to the HDMI connector on to your TV.

To display a picture from your set-top box, your TV must be switched to the correct external input. This is either done automatically or manually, using a button on the TV remote control. See your TV user's guide for instructions.

2

Connect your set-top box to your home Wi-Fi network.

Alternatively: Connect one end of the Ethernet cable (not included) to the Ethernet port on your set-top box and the other end to your home router.

NOTE:When removing the Ethernet/LAN cable make sure to firmly press the underside latching tab on the Ethernet/LAN cable; to unlock the cable from the Ethernet/LAN port on the product.

3

Connect one end of the power supply to **POWER** port on your set-top box and to the power outlet.

4

Insert the batteries into your remote control.

The remote control will initiate pairing with your set-top box when batteries are inserted and any key is pressed.

IMPORTANT SAFETY INSTRUCTIONS

- Never place the product on top of or close to any heat sources such as other electronic devices. Doing so will reduce lifetime and may cause irreparable damage or malfunction. Do not use the product near water. Note that the ambient temperature must be below 104° F/40 C. Be sure to maintain necessary space around the product to allow for proper ventilation.
- Never use the product outside. The product is designed to stand on a horizontal surface.
- Do not use any power supply other than the one supplied with the product. Doing so may cause fire or seriously damage the product.

Federal Communication Commission Interference Statement:

This device complies with Part 15 of the FCC Rules. Operation is subject to the following two conditions: (1) This device may not cause harmful interference, and (2) this device must accept any interference received, including interference that may cause undesired operation.

This equipment has been tested and found to comply with the limits for a Class B digital device, pursuant to Part 15 of the FCC Rules. These limits are designed to provide reasonable protection against harmful interference in a residential installation. This equipment generates, uses and can radiate radio frequency energy and, if not installed

and used in accordance with the instructions, may cause harmful interference to radio communications. However, there is no guarantee that interference will not occur in a particular installation. If this equipment does cause harmful interference to radio or television reception, which can be determined by turning the equipment off and on, the user is encouraged to try to correct the interference by one of the following measures.

- Reorient or relocate the receiving antenna.
- Increase the separation between the equipment and receiver.
- Connect the equipment into an outlet on a circuit

different from that to which the receiver is connected. - Consult the dealer or an experienced radio/ TV technician for help.

FCC Caution: Any changes or modifications not expressly approved by the party responsible for compliance could void the user's authority to operate this equipment. This transmitter must not be co-located or operating in conjunction with any other antenna or transmitter.

Radiation Exposure Statement: This equipment complies with FCC radiation exposure limits set forth for an uncontrolled environment. This equipment should be installed and operated with minimum distance 20cm between the radiator and your body.

IC Warning

- English: "

This device complies with Industry Canada licence-exempt RSS standard(s). Operation is subject to the following two conditions: (1) this device may not cause interference, and (2) this device must accept any interference, including interference that may cause undesired operation of the device.

- French:"

Le présent appareil est conforme aux CNR d'Industrie Canada applicables aux appareils radio exempts de licence. L'exploitation est autorisée aux deux conditions suivantes : (1) l'appareil ne doit pas produire de brouillage, et (2) l'utilisateur de l'appareil doit accepter tout brouillage radioélectrique subi, même si le brouillage est susceptible d'en compromettre le fonctionnement."

Under Industry Canada regulations, this radio transmitter may only operate using an antenna of a type and maximum (or lesser) gain approved for the transmitter by Industry Canada. To reduce potential radio interference to other users, the antenna type and its gain should be so chosen that the equivalent isotopically radiated power (e.i.r.p.) is not more than that necessary for successful communication.

Selon les règlements d'Industrie Canada, cet émetteur radio ne peut fonctionner qu'à l'aide d'une antenne d'un type et d'un gain maximal (ou moindre) approuvé pour l'émetteur par Industrie Canada. Pour réduire les interférences radioélectriques potentielles avec d'autres utilisateurs, le type d'antenne et son gain doivent être choisis de telle sorte que la puissance équivalente rayonnée (p.i.r.e.) ne soit pas supérieure à celle nécessaire pour une communication réussie.

STATEMENT OF RADIATION EXPOSURE:

This equipment complies with the limits of exposure to IC radiation established for an uncontrolled environment. This equipment must be installed and used with a minimum of 20cm distance between the radiation source and your body.

DÉCLARATION D'EXPOSITION AUX RADIATIONS:

Cet équipement est conforme aux limites d'exposition aux rayonnements IC établies pour un environnement non contrôlé. Cet équipement doit être installé et utilisé avec un minimum de 20cm de distance entre la source de rayonnement et votre corps.