

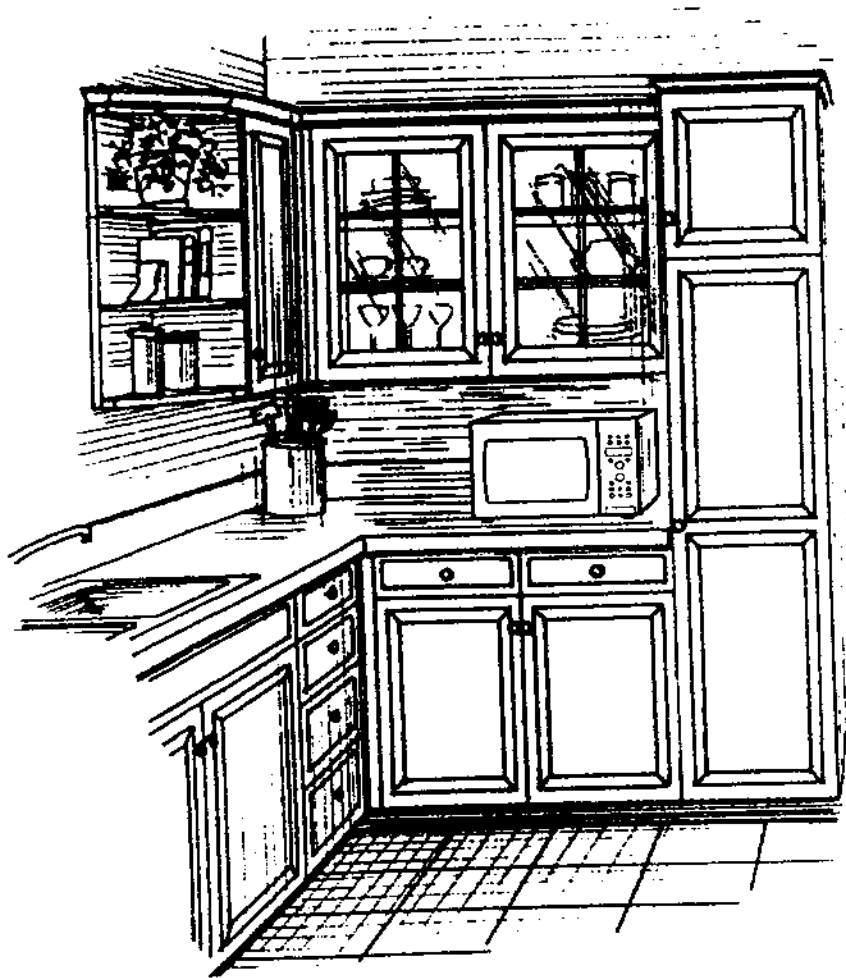
**Panasonic**<sup>®</sup>

Exhibit 7 & 8

ACLAP6E01

# Operating Instructions

## Microwave/Convection Oven Model NN-C994S



*Before operating this oven, please read these instructions completely.  
Antes de operar este producto, lea este instructivo en su totalidad.  
Para instrucciones en español, voltee el libro.*

*For assistance, please call: 1-800-211-PANA (7262)  
or send e-mail to: [consumerproducts@panasonic.com](mailto:consumerproducts@panasonic.com)  
or visit us at [www.panasonic.com](http://www.panasonic.com) (U.S.A.)*

*For assistance, please call: 787-750-4300  
or visit us at [www.panasonicpr.com](http://www.panasonicpr.com) (Puerto Rico)*



## PRECAUTIONS

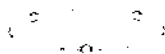
### TO AVOID POSSIBLE EXPOSURE TO EXCESSIVE MICROWAVE ENERGY

- (a) Do not attempt to operate this oven with the door open since open-door operation can result in harmful exposure to microwave energy. It is important not to defeat or tamper with the safety interlocks. Under normal conditions, the oven will not operate with the door open.
- (b) Do not place any object between the oven front face and the door, or allow soil or cleaner residue to accumulate on sealing surfaces.
- (c) Do not operate the oven if it is damaged. It is particularly important that the oven door close properly and that there is no damage to the :
  - (1) door (bent)
  - (2) hinges and latches (broken or loosened)
  - (3) door seals and sealing surfaces.
- (d) The oven should not be adjusted or repaired by anyone except properly qualified service personnel.

## EXAMINE YOUR OVEN

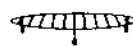
Unpack oven, remove all packing material.  
Examine the oven for any damage such as dents, broken door latches or cracks in the door.  
Check that none of the accessories are missing, by following the list below.

**Roller Ring**



Place the Roller Ring correctly on the oven floor.

**Oven Rack**



Oven Rack should be used for Bake and Broil cooking.

**Ceramic Tray**



Place the Ceramic Tray exactly on Roller Ring. Always use Roller Ring and Ceramic Tray in proper position.

**Operating Instructions**

**Cookbook**

Notify dealer immediately if oven is damaged. **DO NOT** install if oven is damaged.

The serial number of this product may be found on the right side of the oven door opening. You should note the model number and the serial number of this oven in the space provided and retain this book as a permanent record of your purchase for future reference.

Model No. \_\_\_\_\_

Serial No. \_\_\_\_\_

Date of Purchase \_\_\_\_\_

# Microwave Oven Safety

**Your safety and the safety of others are very important.**

We have provided important safety messages in this manual and on your appliance. Always read and obey all safety messages.



This is the safety alert symbol. It is used to alert you to potential hazards that can kill or hurt you and others.

All safety messages will follow the safety alert symbol and either the word "DANGER", "WARNING" or "CAUTION". These words mean:

**⚠ DANGER**

You can be killed or seriously injured if you don't immediately follow instructions.

**⚠ WARNING**

You can be killed or seriously injured if you don't follow instructions.

**⚠ CAUTION**

CAUTION indicates a potentially hazardous situation which, if not avoided, may result in minor or moderate injury.

All safety messages will tell you what the potential hazard is, tell you how to reduce the chance of injury, and tell you what can happen if the instructions are not followed.

## ⚠ IMPORTANT SAFETY INSTRUCTIONS

Your microwave oven is a cooking device and you should use as much care as you use with a stove or any other cooking device. When using this electric appliance, basic safety precautions should be followed, including the following:

**⚠ WARNING** — To reduce the risk of burns, electric shock, fire, injury to persons, or exposure to excessive microwave energy:

1. Read all instructions before using the appliance.
2. Read and follow "PRECAUTIONS TO AVOID POSSIBLE EXPOSURE TO EXCESSIVE MICROWAVE ENERGY," found on page 2.
3. This appliance must be grounded. Connect only to a properly grounded outlet. See "Grounding Instructions" found on page 5.
4. Install or locate this appliance only in accordance with the provided installation instructions found on page 5.
5. Do not cover or block any openings on this appliance.
6. Do not store or use this appliance outdoors. Do not use this product near water—for example, near a kitchen sink, in a wet basement, or near a swimming pool, and the like.
7. Use this appliance only for its intended use as described in this manual. Do not use corrosive chemicals or vapors in this appliance. This type of oven is specifically designed to heat, or cook food. It is not designed for industrial or laboratory use.
8. When cleaning surfaces of door and oven that come together on closing the door, use only mild, non-abrasive soaps or detergents applied with a sponge or soft cloth.
9. **DO NOT** allow children to use this appliance, unless closely supervised by an adult. **DO NOT** assume that because a child has mastered one cooking skill he/she can cook everything.
10. Do not operate this appliance if it has a damaged cord or plug, if it is not working properly, or if it has been damaged or dropped.
11. Do not immerse cord or plug in water.
12. Keep cord away from heated surfaces.
13. Do not let cord hang over edge of table or counter.
14. This appliance should be serviced only by qualified service personnel. Contact the nearest authorized service facility for examination, repair or adjustment.
15. Some products such as whole eggs with or without shell, narrow neck bottles and sealed containers—for example, closed glass jars—may explode and should not be heated in this oven.

# ▲ IMPORTANT SAFETY INSTRUCTIONS

(continued)

16. To reduce the risk of fire in the oven cavity:
  - (a) Do not overcook food. Carefully attend appliance if paper, plastic, or other combustible materials are placed inside the oven to facilitate cooking.
  - (b) Remove wire twist-ties from paper or plastic bags before placing bag in oven.
  - (c) **If materials inside the oven should ignite, keep oven door closed, turn oven off, and disconnect the power cord, or shut off power at the fuse or circuit breaker panel.**
  - (d) **Do not use the cavity for storage purposes. Do not leave paper products, cooking utensils, or food in the cavity when not in use.**
17. To avoid the possible risk of a burn, the appliance must not be used in areas such as island-type countertops where the rear surfaces would be exposed to user contact and the appliance must be placed more than 3 feet (85 cm) above the floor.
18. Liquids, such as water, coffee, or tea are able to be overheated beyond the boiling point without appearing to be boiling. Visible bubbling or boiling when the container is removed from the microwave oven is not always present. **THIS COULD RESULT IN VERY HOT LIQUIDS SUDDENLY BOILING OVER WHEN THE CONTAINER IS DISTURBED OR UTENSIL IS INSERTED INTO THE LIQUID.** To reduce the risk of injury to persons:
  - (a) **STIR THE LIQUID BOTH BEFORE AND HALFWAY THROUGH HEATING IT.**
  - (b) **Do not heat water and oil, or fats together. The film of oil will trap steam, and may cause a violent eruption.**
  - (c) Do not use straight-sided containers with narrow necks.
  - (d) After heating, allow the container to stand in the microwave oven for a short time before removing the container.
19. **DO NOT** cook directly on the turntable. It can crack, cause injury or damage to the oven.
20. Do not clean with metal scouring pads. Pieces can burn off the pad and touch electrical parts involving a risk of electric shock.

## General Use

1. **DO NOT** tamper with or make any adjustments or repairs to the door, control panel housing, safety interlock switches or any other part of the oven. **DO NOT** remove outer panel from oven. Repairs should only be done by qualified service person.
2. **DO NOT** use the microwave function when the oven is empty. The microwave energy will reflect continuously throughout the oven, if food or water is not present to absorb energy. This could damage the oven and result in the danger of a fire.
3. **DO NOT** use this oven to heat chemicals or other non-food products. **DO NOT** clean this oven with any product that is labeled as containing corrosive chemicals. **The heating of corrosive chemicals in this oven can cause radiation leaks.**
4. **DO NOT** dry clothes, newspapers or other materials in the oven. They may catch on fire.
5. **DO NOT** use recycled paper products unless the paper product is labeled as safe for microwave oven use. Recycled paper products may contain impurities which may cause sparks and/or fires when used.
6. **DO NOT** use newspapers or paper bags for cooking. Fire can result.
7. **DO NOT** hit or strike the control panel. Damage to the controls may occur. Fire can result.
8. **DO NOT** store flammable materials next to, on top of, or in the oven. These could be fire hazards.
9. **POT HOLDERS** may be needed when handling dishes. Heat is transferred from the hot food to the cooking container and from the cooking container to Glass Tray. Glass Tray can be very hot after removing cooking container from oven.
10. Oversized foods or oversized metal utensils should not be inserted in a microwave oven as that may create a fire or risk of electric shock.
11. Before using the **BAKE, COMBINATION** or **BROIL** functions for the first time, operate the oven without food on **BROIL** for 20 minutes. This will allow the oil that is used for rust protection to be burned off.
12. Door and exterior will get hot during **BAKE, COMBINATION** and **BROIL**. Please handle door carefully.
13. Use extreme caution when removing oven accessories or cooking containers from oven or disposing of hot grease.

Before Operation

# ⚠ IMPORTANT SAFETY INSTRUCTIONS

(continued)

Before Operation

## Ceramic Tray

1. **DO NOT** operate the oven without the Roller Ring and the Ceramic Tray in place.
2. **DO NOT** operate the oven without the Ceramic Tray fully engaged on the drive hub. Improper cooking or damage to the oven could result. Verify that the Ceramic Tray is properly engaged and rotating by observing its rotation when you press Start. **Note:** The Ceramic Tray can turn in either direction.
3. Use only the Ceramic Tray specifically designed for this oven.  
**DO NOT** substitute any other ceramic tray.
4. If the Ceramic Tray is hot, allow to cool before cleaning or placing in water.

5. **DO NOT** cook directly on the Ceramic Tray. Always place food in a microwave safe dish, or on a rack set in a microwave safe dish.
6. If food or utensils on the Ceramic Tray touch oven walls, causing the tray to stop moving, the tray will automatically rotate in the opposite direction.

## Roller Ring

1. The Roller Ring and oven floor should be cleaned frequently to prevent excessive noise.
2. Always replace the Roller Ring and the Ceramic Tray in their proper positions.
3. The Roller Ring must always be used for cooking along with the Ceramic Tray.

# ⚠ Installation & Grounding Instructions

## Placement of Your Oven

1. Oven must be placed on a flat, stable surface. For proper operation, the oven must have sufficient air flow. Allow 3" ( 8 cm ) of space on both sides of the oven and 6" ( 15 cm ) of space on top of the oven.
  - a. **DO NOT** block air vents. If they are blocked during operation, the oven may overheat. If the oven overheats, a thermal safety device will turn the oven off. The oven will remain inoperable until it has cooled.
  - b. **DO NOT** place the oven near a hot, damp surface such as a gas or electric range, or dishwasher.
  - c. **DO NOT** operate the oven when room humidity is too high.
2. This oven was manufactured for household use only.
3. This oven may be built into a wall cabinet, if desired, by using the proper trim kit, which may be purchased from a local dealer.  
Follow all installation instructions packed with kit.

## Grounding Instructions

This appliance must be grounded. In the event of an electrical short circuit, grounding reduces the risk of electric shock by providing an escape wire for the electric current. This appliance is equipped with a cord having a grounding wire with a grounding plug. The plug must be plugged into an outlet that is properly installed and grounded.

**WARNING**—Improper use of the grounding plug can result in a risk of electric shock.

Consult a qualified electrician or service person if the grounding instructions are not completely understood, or if it is uncertain whether the appliance is properly grounded or not.

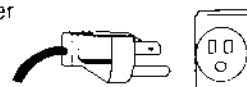
If it is necessary to use an extension cord, use only a three wire extension cord that has a three-blade grounding plug, and a three-slot receptacle that will accept the plug on the appliance. The marked rating of the extension cord should be equal to, or greater than, the electrical rating of the appliance.

## Power Supply

1. A short power-supply cord is provided to reduce the risks resulting from becoming entangled in or tripping over a longer cord.
2. Longer cord sets or extension cords are available and may be used if care is exercised in their use.
3. If a long cord or extension cord is used, (1) the marked electrical rating of the cord set or extension cord should be at least as great as the electrical rating of the appliance, (2) the extension cord must be a grounding-type 3-wire cord, and (3) the longer cord should be arranged so that it will not drape over the countertop or tabletop where it can be pulled on by children or tripped over accidentally.

## Wiring Requirements

1. The oven must be on a SEPARATE CIRCUIT. No other appliance should share the circuit with the microwave oven. If it does, the branch circuit fuse may blow or the circuit breaker may trip, or the food may cook slower than recommended in this manual.
2. The VOLTAGE used must be the same as specified on this microwave oven (120 V). Using a higher voltage is dangerous and may result in a fire or other accident causing oven damage. Using a lower voltage will cause slow cooking. Panasonic is **NOT** responsible for damage resulting from the use of the oven with other than specified voltage.
3. The oven must be plugged into at least a 20 AMP, 120 VOLT, 60 Hz GROUNDED OUTLET. Where a standard two-prong outlet is encountered, it is the personal responsibility and obligation of the consumer to have it replaced with a properly grounded three-prong outlet.



# ⚠ Installation & Grounding Instructions

(continued)

## Radio Interference

1. Operation of the microwave oven may cause interference to your radio, TV or similar equipment.
2. When there is interference, it may be reduced or eliminated by taking the following measures:
  - a. Clean door and sealing surfaces of the oven (See Care of Your Microwave Oven found on page 25)
  - b. Place the radio, TV, etc. away from the microwave oven as far as possible.
  - c. Use a properly installed antenna to obtain stronger signal reception.

## Fan Motor Operation

After using the oven, the fan rotate to cook the electric components. This is perfectly normal, and you can take out the food from the oven while the fan operates.

# ⚠ Practical Hints

## Follow These Safety Precautions When Cooking in Your Oven

### IMPORTANT

Proper cooking depends upon the power, the time setting and quantity of food. If you use a smaller portion than recommended but cook at the time for the recommended portion, fire could result.

### 1) HOME CANNING / DRYING FOODS / SMALL QUANTITIES OF FOODS

- **DO NOT** use your oven for home canning. Your oven cannot maintain the food at the proper canning temperature. The food may be contaminated and then spoil.
- **DO NOT** use the microwave oven to sterilize objects (baby bottles, etc.). It is difficult to keep the oven at the high temperature needed for sterilization.
- **DO NOT** dry meats, herbs, fruits or vegetables in your oven. Small quantities of food or foods with low moisture content can dry out, scorch or catch on fire if overheated.

### 2) POPCORN

Popcorn must be popped in a microwave oven corn popper. Microwave popcorn which pops in its own package is also available. Follow popcorn manufacturers' directions and use a brand suitable for the cooking power of your microwave oven.

#### **CAUTION:**

When using pre-packaged microwave popcorn, you can follow recommended package instructions or use the popcorn pad (refer to page 17). Otherwise, the popcorn may not pop adequately or may ignite and cause a fire. Never leave oven unattended when popping popcorn. Allow the popcorn bag to cool before opening, always open the bag away from your face and bod to prevent steam burns.

### 3) DEEP FAT FRYING

- **DO NOT** deep fat fry in your microwave oven. Cooking oils may burst into flames and may cause damage to the oven and perhaps result in burns. Microwave utensils may not withstand the temperature of the hot oil, and can shatter or melt.

### 4) FOODS WITH NONPOROUS SKINS

- **DO NOT COOK/REHEAT WHOLE EGGS, WITH OR WITHOUT THE SHELL.** Steam buildup in whole eggs may cause them to explode, and possibly damage the oven or cause injury. Reheating SLICED hard-boiled eggs and cooking SCRAMBLED eggs is safe.
- **Potatoes, apples, whole squash and sausages** are examples of foods with non-porous skins. These types of foods must be pierced before microwave cooking to prevent them from exploding.

**CAUTION:** Cooking dry or old potatoes can cause fire.

# SAVE THESE INSTRUCTIONS

For proper use of your oven read remaining safety cautions and operating instructions.

## ⚠ Practical Hints (continued)

### 5) CERAMIC TRAY / COOKING UTENSILS / FOIL

- Cooking utensils get hot during cooking. Use potholders when removing utensils and Glass Tray from the oven or when removing lids or plastic wrap covers from cooking utensils to avoid burns.
- Ceramic Tray will get hot during cooking. It should be allowed to cool before handling or before paper products, such as paper plates, napkins or microwave popcorn bags, are placed in the oven for microwave cooking.
- During cooking, heat is transferred from the hot food to the cooking utensil and from the utensil to Ceramic Tray. Ceramic Tray can be very hot after removing cooking utensils from oven.
- When using foil, skewers, warming rack or utensils made of metal in the oven, allow at least 1-inch (2.5 cm) of space between metal material and interior oven walls. If arcing occurs (sparking) remove metal material (skewers etc.) and/or transfer to a non-metallic container.
- Dishes with metallic trim should not be used during Microwave or **Combination** cooking, arcing may occur.

### 6) PAPER TOWELS / CLOTHS

- Do not use paper towels or cloths which contain a synthetic fiber woven into them. The synthetic fiber may cause the towel to ignite.
- Do not use paper bags or recycled paper products in the microwave oven.

### 7) BROWNING DISHES / OVEN COOKING BAGS

- Microwave browning dishes or grills are designed for microwave cooking only. Preheating times vary depending on the size of the browning dish and food being cooked. Always follow instructions provided by the browning dish or grill manufacturer. Do not preheat browning dish more than 8 minutes.
- If an oven cooking bag is used for microwave cooking, prepare according to package directions. Do not use wire twist-tie to close bag. Instead use nylon tie, a piece of cotton string or a strip cut from the open end of the bag. Make six 1/2-inch slits by closure. Place oven cooking bag in a dish slightly larger than the food being cooked.

### 8) THERMOMETERS

- Do not use a conventional meat thermometer for Microwave or Combination cooking. Arcing may occur. Do not use a microwave meat thermometer for Combination cooking or Bake. It may melt.

### 9) BABY FORMULA / FOOD

- Do not heat baby formula or food in the microwave oven. The glass jar or surface of the food may appear warm while the interior can burn the infant's mouth and esophagus.

### 10) REHEATING PASTRY PRODUCTS

- When reheating pastry products, check temperatures of any fillings before eating. Some foods have fillings which heat faster and can be extremely hot while the surface remains warm to the touch (ex. Jelly Donuts).

### 11) GENERAL OVEN USAGE GUIDELINES / OVEN DOOR

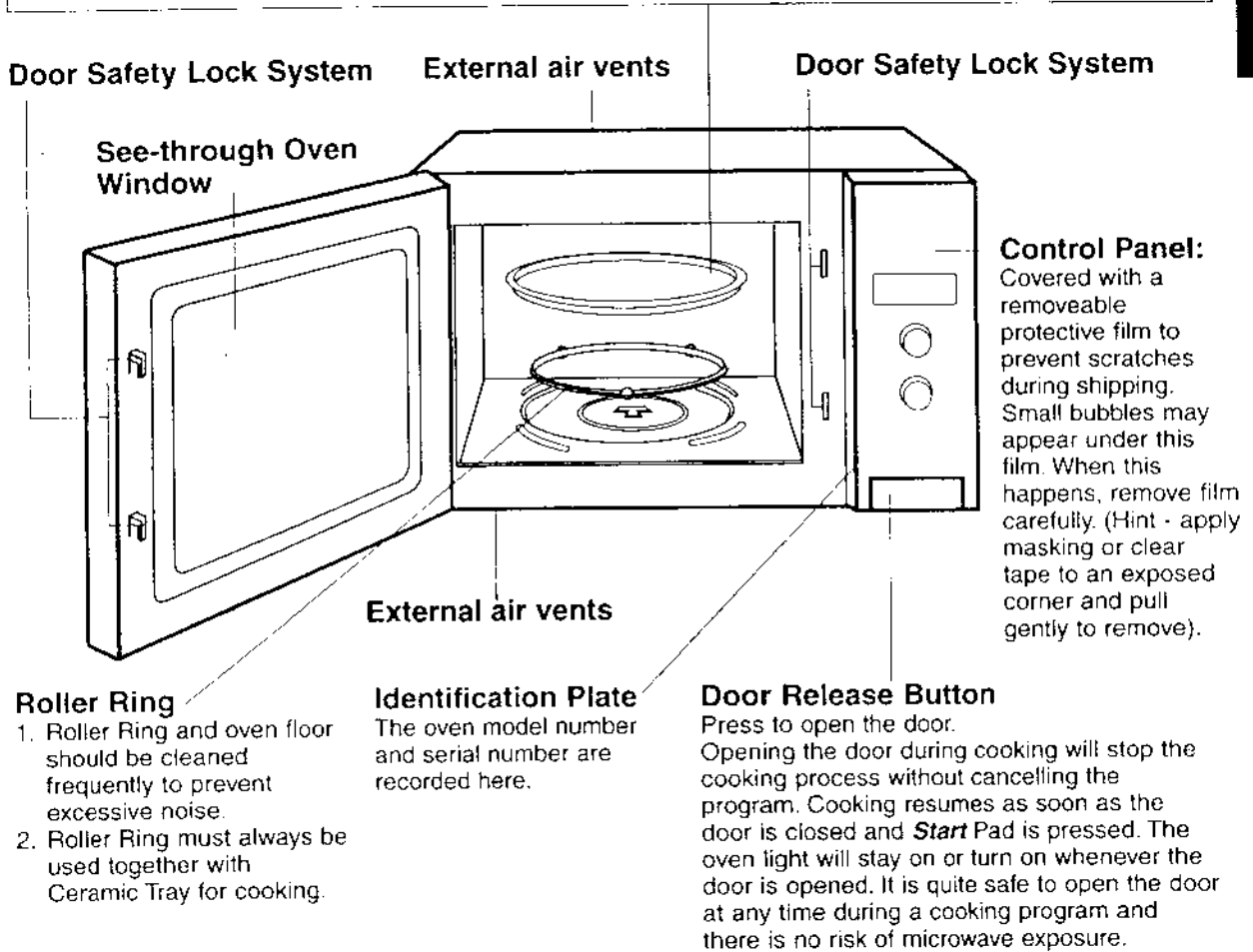
- Do not use the oven for any reason other than the preparation of food.
- Do not leave oven unattended while in use.
- The oven door and the interior walls will get hot during Combination, Bake and Broil cooking.

# Feature Diagram

Before Operation

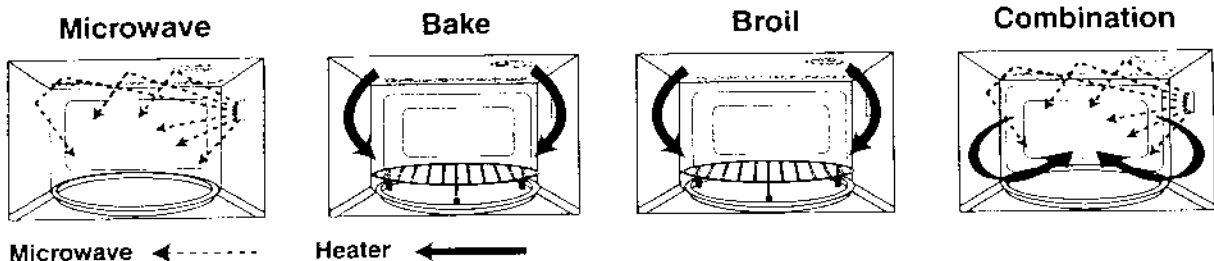
## Ceramic Tray

1. Do not operate the oven without the Roller Ring and Ceramic Tray in place.
2. Only use Ceramic Tray specifically designed for this oven. Do not substitute any other Ceramic Tray.
3. If Ceramic Tray is hot, allow to cool before cleaning or placing in water.
4. Do not cook directly on Ceramic Tray unless otherwise indicated. Always place food in a microwave-safe dish, or on a rack set in a microwave-safe dish.
5. Ceramic Tray can rotate in either direction.
6. If food or utensil on Ceramic Tray touches the oven walls, causing the tray to stop moving, the tray will automatically rotate in the opposite direction. This is normal.



## Cooking Modes: Heating Source

The diagram below shows examples of the accessories. Use of these accessories may vary depending on the recipe/dish used. Further information can be found in the Cookbook.





# Technical Specifications

Power Consumption:	
Microwave	12.8 Amps, 1,500 W
Heater	12.5 Amps, 1,500 W
Output:	
Microwave	1100 W*
Heater	1,400 W
Outside Dimensions:	14 <sup>13</sup> / <sub>16</sub> " x 23 <sup>7</sup> / <sub>8</sub> " x 19 <sup>5</sup> / <sub>16</sub> "
	376 mm (H) x 606 mm (W) x 491 mm (D)
Oven Cavity Dimensions:	9 <sup>1</sup> / <sub>2</sub> " x 16 <sup>1</sup> / <sub>4</sub> " x 16 <sup>13</sup> / <sub>16</sub> "
	242 mm (H) x 412 mm (W) x 426 mm (D)
Operating Frequency:	2,450 MHz
Built-in Trim Kit:	NN-TK903S (27") [686 mm (W)]/NN-TK913S (30") [686 mm (W)]
Uncrated Weight:	Approx. 46 lbs (21 kg)

Specifications are subject to change without notice.

\* IEC Test procedure

As for the voltage requirement, the production year and month, country and serial number, please refer to the identification plate on the microwave oven.

Maintenance

**Panasonic Consumer Electronics Company, Division of Matsushita Electric Corporation of America**  
 One Panasonic Way,  
 Secaucus, New Jersey 07094  
 Web site: <http://www.panasonic.com>

**Panasonic Sales Company, Division of Matsushita Electric of Puerto Rico, Inc. ("PSC")**  
 Ave. 65 de Infantería, Km. 9.5  
 San Gabriel Industrial Park,  
 Carolina, Puerto Rico 00985  
 Web site: <http://www.panasonicpr.com>

**Matsushita Electric Industrial Co., Ltd.**  
 Cooking Systems Division  
 800 Tsutsui-cho, Yamatokoriyama City, Nara 639-1188, Japan  
 Web Site: <http://www.panasonic.co.jp/global/>

A00036E00AP  
 F1103-0  
 Printed in Japan