

#01_WCDMA II_RMC 12.2Kbps_Right Cheek_Ch9262

Communication System: WCDMA; Frequency: 1852.4 MHz; Duty Cycle: 1:1
Medium: HSL_1900_180725 Medium parameters used : $f = 1852.4$ MHz; $\sigma = 1.38$ S/m; $\epsilon_r = 41$;
 $\rho = 1000$ kg/m³
Ambient Temperature : 23.4 °C; Liquid Temperature : 22.4 °C

DASY5 Configuration:

- Probe: ES3DV3 - SN3169; ConvF(5.27, 5.27, 5.27); Calibrated: 2018/5/28
- Sensor-Surface: 3mm (Mechanical Surface Detection)
- Electronics: DAE4 Sn917; Calibrated: 2017/12/14
- Phantom: SAM_Right; Type: QD000P40CD; Serial: TP:1815
- Measurement SW: DASY52, Version 52.10 (0); SEMCAD X Version 14.6.10 (7417)

Area Scan (71x121x1): Measurement grid: dx=15mm, dy=15mm

Maximum value of SAR (interpolated) = 0.731 mW/g

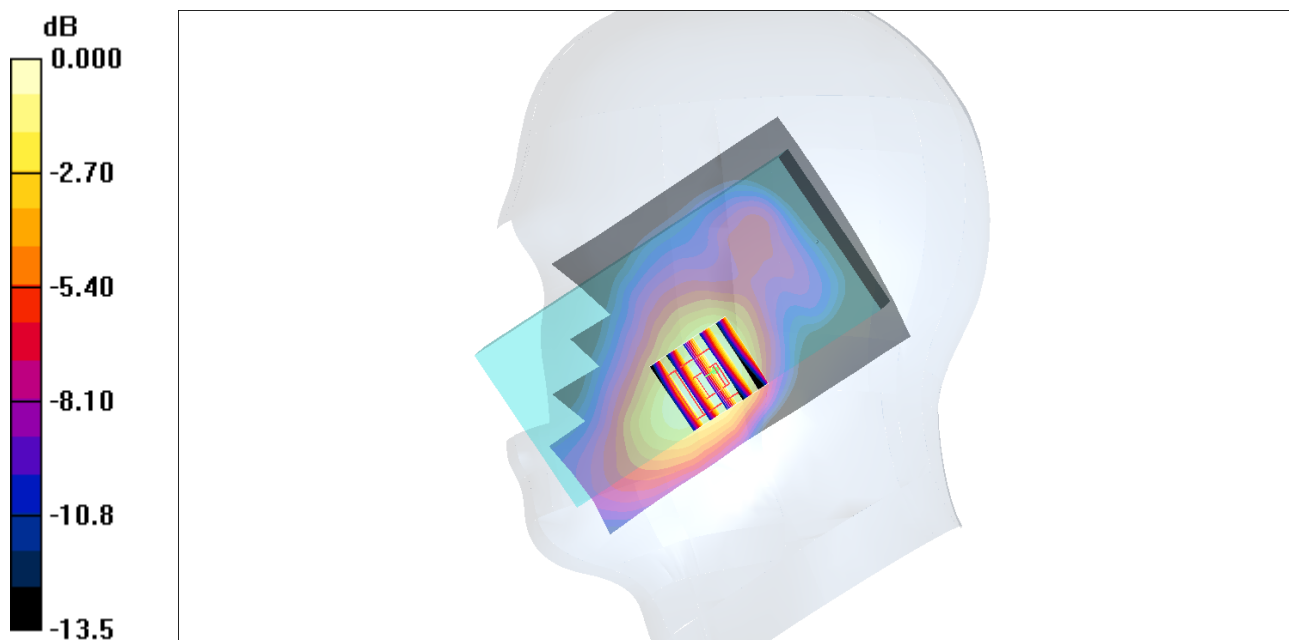
Zoom Scan (5x5x7)/Cube 0: Measurement grid: dx=8mm, dy=8mm, dz=5mm

Reference Value = 22.1 V/m; Power Drift = 0.056 dB

Peak SAR (extrapolated) = 0.963 W/kg

SAR(1 g) = 0.644 mW/g; SAR(10 g) = 0.404 mW/g

Maximum value of SAR (measured) = 0.732 mW/g



0 dB = 0.732mW/g

#02_WCDMA V_RMC 12.2Kbps_Left Cheek_Ch4132

Communication System: WCDMA; Frequency: 826.4 MHz; Duty Cycle: 1:1

Medium: HSL_850_180716 Medium parameters used: $f = 826.4$ MHz; $\sigma = 0.872$ S/m; $\epsilon_r = 40.622$; $\rho = 1000$ kg/m³

Ambient Temperature : 23.5 °C; Liquid Temperature : 22.5 °C

DASY5 Configuration:

- Probe: ES3DV3 - SN3170; ConvF(6.21, 6.21, 6.21); Calibrated: 2017/10/26;
- Sensor-Surface: 3mm (Mechanical Surface Detection)
- Electronics: DAE4 Sn853; Calibrated: 2017/7/19
- Phantom: SAM_Right; Type: QD000P40CD; Serial: 1884
- Measurement SW: DASY52, Version 52.10 (0); SEMCAD X Version 14.6.10 (7417)

Area Scan (61x121x1): Interpolated grid: dx=1.500 mm, dy=1.500 mm

Maximum value of SAR (interpolated) = 0.351 W/kg

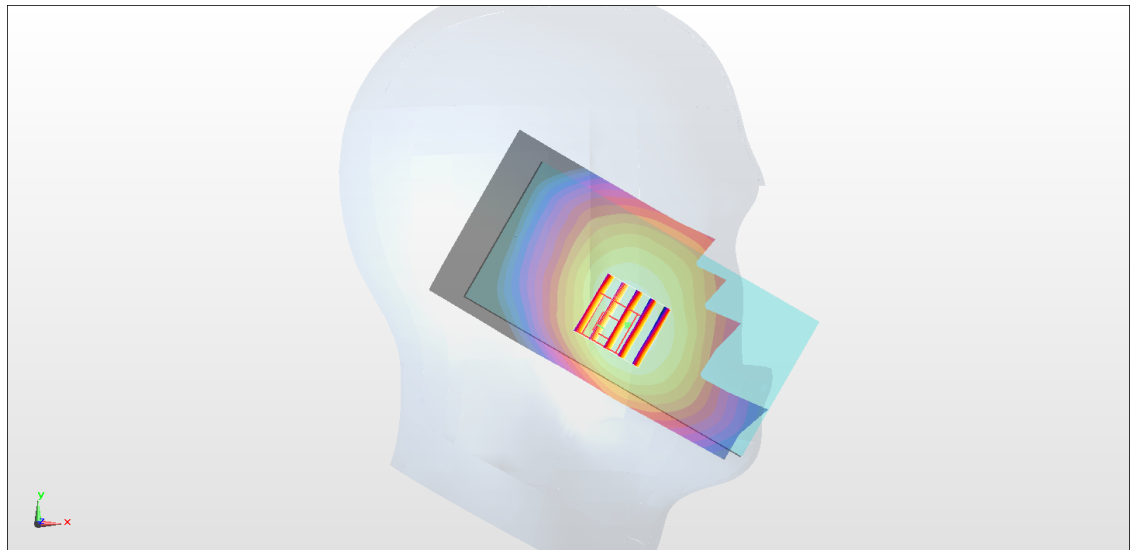
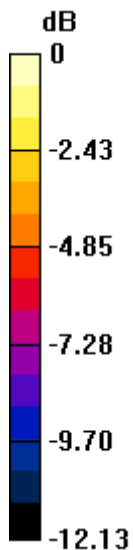
Zoom Scan (5x5x7)/Cube 0: Measurement grid: dx=8mm, dy=8mm, dz=5mm

Reference Value = 20.76 V/m; Power Drift = -0.02 dB

Peak SAR (extrapolated) = 0.401 W/kg

SAR(1 g) = 0.323 W/kg; SAR(10 g) = 0.248 W/kg

Maximum value of SAR (measured) = 0.356 W/kg



0 dB = 0.351 W/kg = -4.55 dBW/kg

#03_LTE Band 2_20M_QPSK_1_49_Right Cheek_Ch19100

Communication System: LTE; Frequency: 1900 MHz; Duty Cycle: 1:1

Medium: HSL_1900_180718 Medium parameters used: $f = 1900$ MHz; $\sigma = 1.447$ S/m; $\epsilon_r = 39.73$; $\rho = 1000$ kg/m³

Ambient Temperature : 23.3 °C ; Liquid Temperature : 22.3 °C

DASY5 Configuration:

- Probe: ES3DV3 - SN3169; ConvF(5.27, 5.27, 5.27); Calibrated: 2018/5/28;
- Sensor-Surface: 3mm (Mechanical Surface Detection)
- Electronics: DAE3 Sn577; Calibrated: 2017/9/25
- Phantom: SAM_Right; Type: SAM; Serial: TP:1479
- Measurement SW: DASY52, Version 52.8 (8); SEMCAD X Version 14.6.10 (7373)

Area Scan (61x121x1): Interpolated grid: dx=1.500 mm, dy=1.500 mm

Maximum value of SAR (interpolated) = 0.936 W/kg

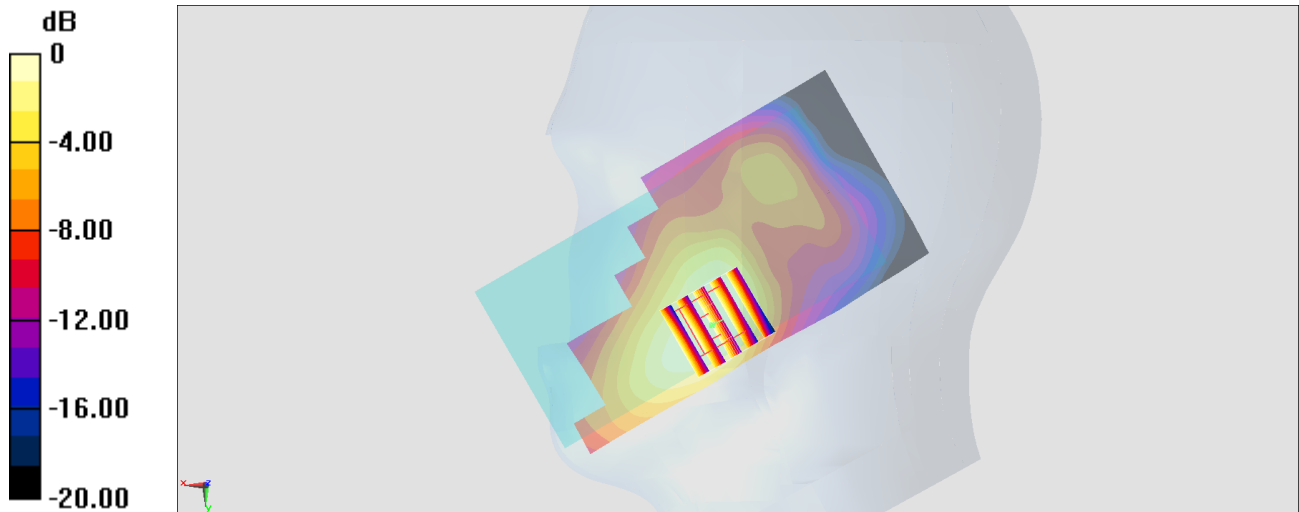
Zoom Scan (5x5x7)/Cube 0: Measurement grid: dx=8mm, dy=8mm, dz=5mm

Reference Value = 23.80 V/m; Power Drift = 0.02 dB

Peak SAR (extrapolated) = 1.20 W/kg

SAR(1 g) = 0.727 W/kg; SAR(10 g) = 0.442 W/kg

Maximum value of SAR (measured) = 0.855 W/kg



0 dB = 0.855 W/kg = -0.68 dBW/kg

#04_LTE Band 4_20M_QPSK_1_49_Right Cheek_Ch20175

Communication System: LTE; Frequency: 1732.5 MHz; Duty Cycle: 1:1

Medium: HSL_1750_180718 Medium parameters used : $f = 1732.5$ MHz; $\sigma = 1.347$ S/m; $\epsilon_r =$

40.945 ; $\rho = 1000$ kg/m³

Ambient Temperature : 23.3 °C ; Liquid Temperature : 22.3 °C

DASY5 Configuration:

- Probe: ES3DV3 - SN3169; ConvF(5.48, 5.48, 5.48); Calibrated: 2018/5/28;
- Sensor-Surface: 3mm (Mechanical Surface Detection)
- Electronics: DAE3 Sn577; Calibrated: 2017/9/25
- Phantom: SAM_Right; Type: SAM; Serial: TP:1479
- Measurement SW: DASY52, Version 52.8 (8); SEMCAD X Version 14.6.10 (7373)

Area Scan (61x121x1): Interpolated grid: $dx=1.500$ mm, $dy=1.500$ mm

Maximum value of SAR (interpolated) = 0.855 W/kg

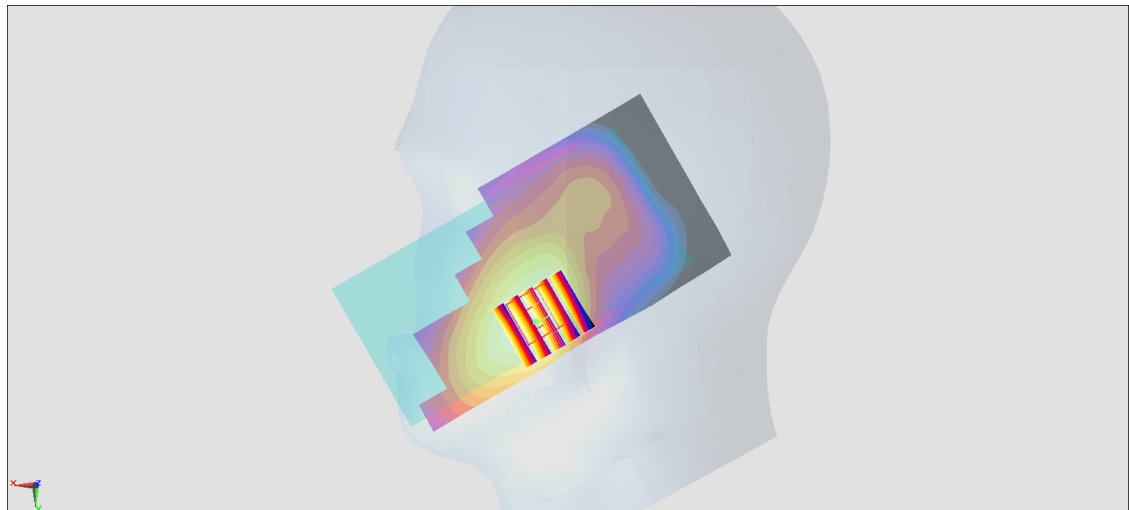
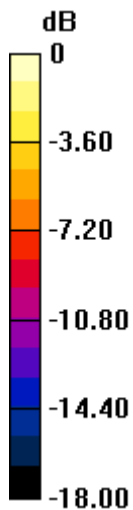
Zoom Scan (5x5x7)/Cube 0: Measurement grid: $dx=8$ mm, $dy=8$ mm, $dz=5$ mm

Reference Value = 23.94 V/m; Power Drift = -0.06 dB

Peak SAR (extrapolated) = 1.07 W/kg

SAR(1 g) = 0.708 W/kg; SAR(10 g) = 0.447 W/kg

Maximum value of SAR (measured) = 0.809 W/kg



0 dB = 0.809 W/kg = -0.92 dBW/kg

#05_LTE Band 5_10M_QPSK_1_25_Left Cheek_Ch20525

Communication System: LTE; Frequency: 836.5 MHz; Duty Cycle: 1:1

Medium: HSL_850_180716 Medium parameters used: $f = 836.5$ MHz; $\sigma = 0.881$ S/m; $\epsilon_r = 40.53$; $\rho = 1000$ kg/m³

Ambient Temperature : 23.5 °C ; Liquid Temperature : 22.5 °C

DASY5 Configuration:

- Probe: ES3DV3 - SN3170; ConvF(6.21, 6.21, 6.21); Calibrated: 2017/10/26
- Sensor-Surface: 3mm (Mechanical Surface Detection)
- Electronics: DAE4 Sn853; Calibrated: 2017/7/19
- Phantom: SAM_Right; Type: QD000P40CD; Serial: 1884
- Measurement SW: DASY52, Version 52.10 (1); SEMCAD X Version 14.6.11 (7437)

Area Scan (61x121x1): Interpolated grid: dx=1.500 mm, dy=1.500 mm

Maximum value of SAR (interpolated) = 0.398 W/kg

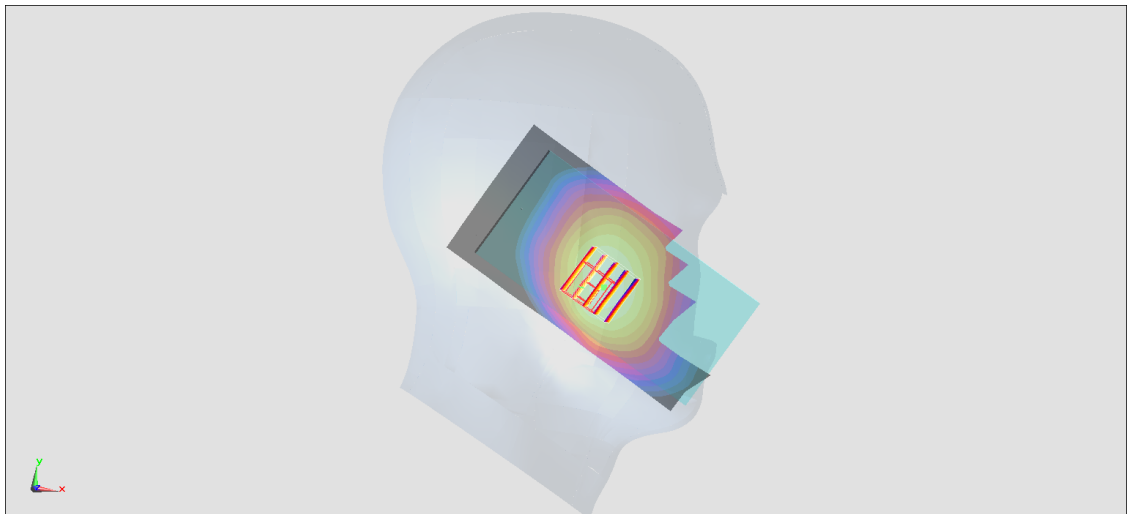
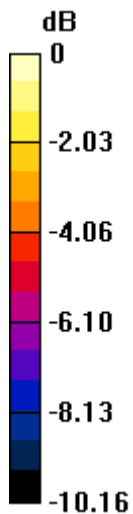
Zoom Scan (5x5x7)/Cube 0: Measurement grid: dx=8mm, dy=8mm, dz=5mm

Reference Value = 21.70 V/m; Power Drift = 0.02 dB

Peak SAR (extrapolated) = 0.476 W/kg

SAR(1 g) = 0.377 W/kg; SAR(10 g) = 0.285 W/kg

Maximum value of SAR (measured) = 0.411 W/kg



0 dB = 0.411 W/kg = -3.86 dBW/kg

#06_LTE Band 12_10M_QPSK_1_25_Right Cheek_Ch23095

Communication System: LTE ; Frequency: 707.5 MHz;Duty Cycle: 1:1

Medium: HSL_750_180718 Medium parameters used : $f = 707.5$ MHz; $\sigma = 0.853$ S/m; $\epsilon_r = 41.044$; $\rho = 1000$ kg/m³

Ambient Temperature : 23.2 °C ; Liquid Temperature : 22.2 °C

DASY5 Configuration:

- Probe: ES3DV3 - SN3169; ConvF(6.56, 6.56, 6.56); Calibrated: 2018/5/28;
- Sensor-Surface: 3mm (Mechanical Surface Detection)
- Electronics: DAE3 Sn577; Calibrated: 2017/9/25
- Phantom: SAM_Right; Type: SAM; Serial: TP:1479
- Measurement SW: DASY52, Version 52.8 (8);SEMCAD X Version 14.6.10 (7373)

Area Scan (61x121x1): Interpolated grid: dx=1.500 mm, dy=1.500 mm

Maximum value of SAR (interpolated) = 0.283 W/kg

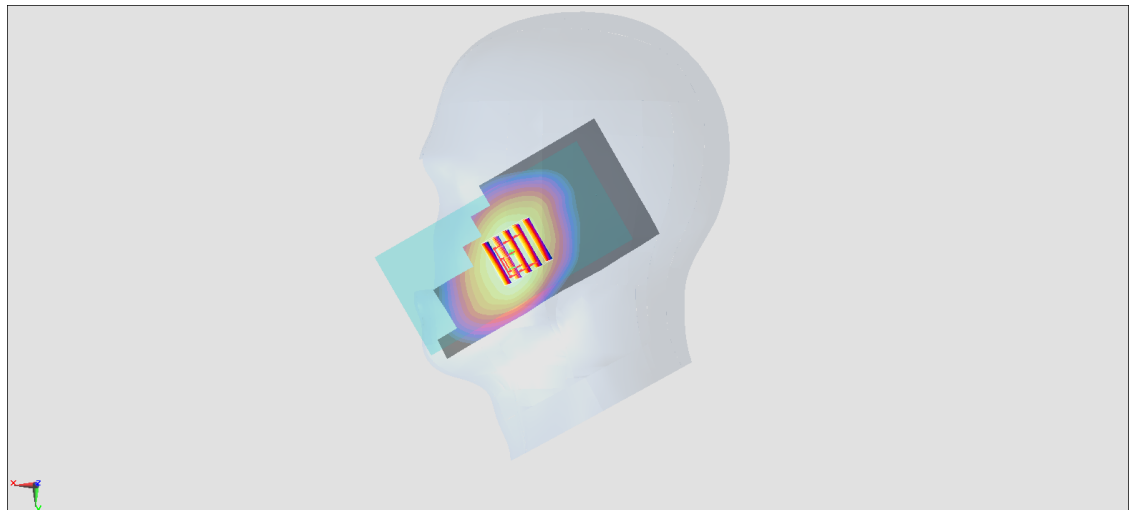
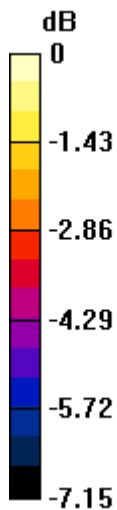
Zoom Scan (5x5x7)/Cube 0: Measurement grid: dx=8mm, dy=8mm, dz=5mm

Reference Value = 18.35 V/m; Power Drift = -0.08 dB

Peak SAR (extrapolated) = 0.307 W/kg

SAR(1 g) = 0.255 W/kg; SAR(10 g) = 0.204 W/kg

Maximum value of SAR (measured) = 0.271 W/kg



#07_LTE Band 13_10M_QPSK_1_25_Left Cheek_Ch23230

Communication System: LTE ; Frequency: 782 MHz;Duty Cycle: 1:1

Medium: HSL_750_180718 Medium parameters used: $f = 782$ MHz; $\sigma = 0.923$ S/m; $\epsilon_r = 40.831$; $\rho = 1000$ kg/m³

Ambient Temperature : 23.2 °C ; Liquid Temperature : 22.2 °C

DASY5 Configuration:

- Probe: ES3DV3 - SN3169; ConvF(6.56, 6.56, 6.56); Calibrated: 2018/5/28;
- Sensor-Surface: 3mm (Mechanical Surface Detection)
- Electronics: DAE3 Sn577; Calibrated: 2017/9/25
- Phantom: SAM_Right; Type: SAM; Serial: TP:1479
- Measurement SW: DASY52, Version 52.8 (8);SEMCAD X Version 14.6.10 (7373)

Area Scan (61x121x1): Interpolated grid: dx=1.500 mm, dy=1.500 mm

Maximum value of SAR (interpolated) = 0.369 W/kg

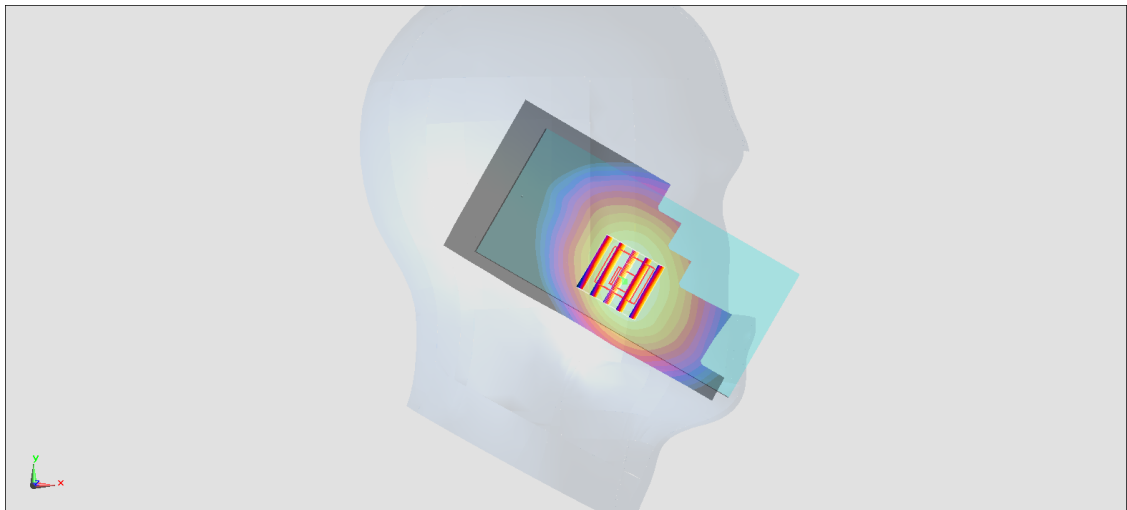
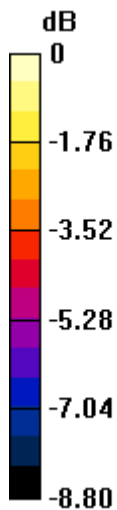
Zoom Scan (5x5x7)/Cube 0: Measurement grid: dx=8mm, dy=8mm, dz=5mm

Reference Value = 19.29 V/m; Power Drift = 0.03 dB

Peak SAR (extrapolated) = 0.401 W/kg

SAR(1 g) = 0.319 W/kg; SAR(10 g) = 0.242 W/kg

Maximum value of SAR (measured) = 0.358 W/kg



0 dB = 0.358 W/kg = -4.46 dBW/kg

#08_WLAN2.4GHz_802.11b 1Mbps_Right Cheek_Ch6

Communication System: 802.11b ; Frequency: 2437 MHz;Duty Cycle: 1:1

Medium: HSL_2450_180720 Medium parameters used : $f = 2437$ MHz; $\sigma = 1.832$ S/m; $\epsilon_r = 38.814$; $\rho = 1000$ kg/m³

Ambient Temperature : 23.6 °C ; Liquid Temperature : 22.6 °C

DASY5 Configuration:

- Probe: ES3DV3 - SN3169; ConvF(4.69, 4.69, 4.69); Calibrated: 2018/5/28;
- Sensor-Surface: 3mm (Mechanical Surface Detection)
- Electronics: DAE3 Sn577; Calibrated: 2017/9/25
- Phantom: SAM_Left; Type: QD000P40CD; Serial: TP:1477
- Measurement SW: DASY52, Version 52.8 (8);SEMCAD X Version 14.6.10 (7373)

Area Scan (81x141x1): Interpolated grid: dx=1.200 mm, dy=1.200 mm

Maximum value of SAR (interpolated) = 0.506 W/kg

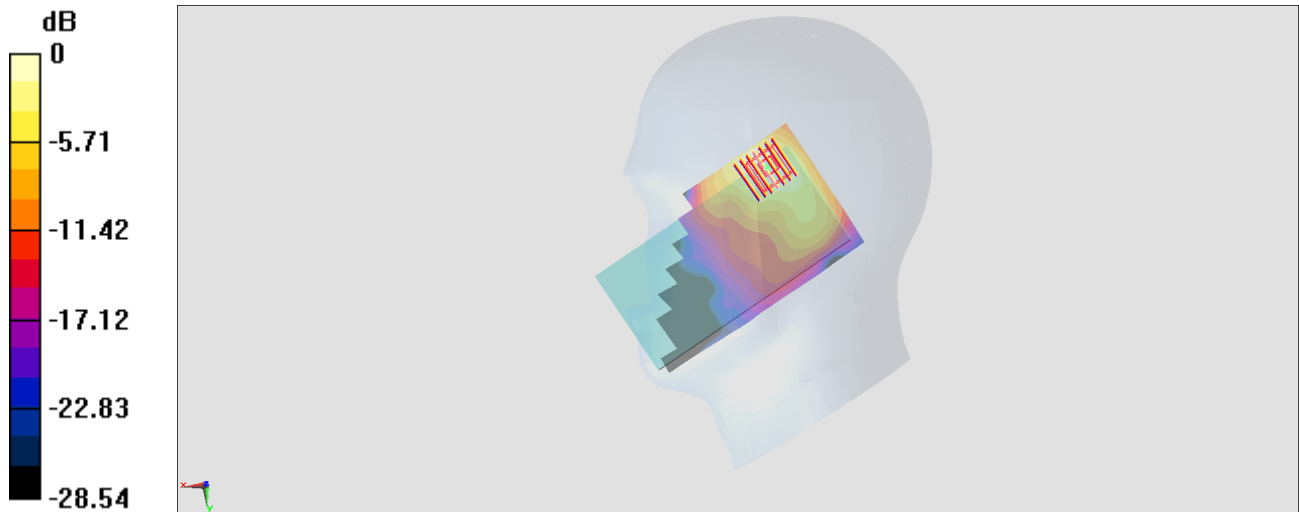
Zoom Scan (7x7x7)/Cube 0: Measurement grid: dx=5mm, dy=5mm, dz=5mm

Reference Value = 12.48 V/m; Power Drift = -0.02 dB

Peak SAR (extrapolated) = 0.889 W/kg

SAR(1 g) = 0.406 W/kg; SAR(10 g) = 0.198 W/kg

Maximum value of SAR (measured) = 0.527 W/kg



0 dB = 0.527 W/kg = -2.78 dBW/kg

#09_WLAN5GHz_802.11a 6Mbps_Right Cheek_Ch56

Communication System: 802.11a; Frequency: 5280 MHz; Duty Cycle: 1:1.154

Medium: HSL_5G_180724 Medium parameters used: $f = 5280$ MHz; $\sigma = 4.686$ S/m; $\epsilon_r = 36.865$; $\rho = 1000$ kg/m³

Ambient Temperature : 23.5 °C ; Liquid Temperature : 22.5 °C

DASY5 Configuration

- Probe: EX3DV4 - SN3976; ConvF(5.56, 5.56, 5.56); Calibrated: 2018/1/23
- Sensor-Surface: 1.4mm (Mechanical Surface Detection)
- Electronics: DAE4 Sn1424; Calibrated: 2018/1/18
- Phantom: SAM_Left; Type: QD000P40CD; Serial: S/N:1801
- Measurement SW: DASY52, Version 52.10 (1); SEMCAD X Version 14.6.11 (7439)

Area Scan (101x91x1): Interpolated grid: $dx=1.000$ mm, $dy=1.000$ mm

Maximum value of SAR (interpolated) = 0.536 W/kg

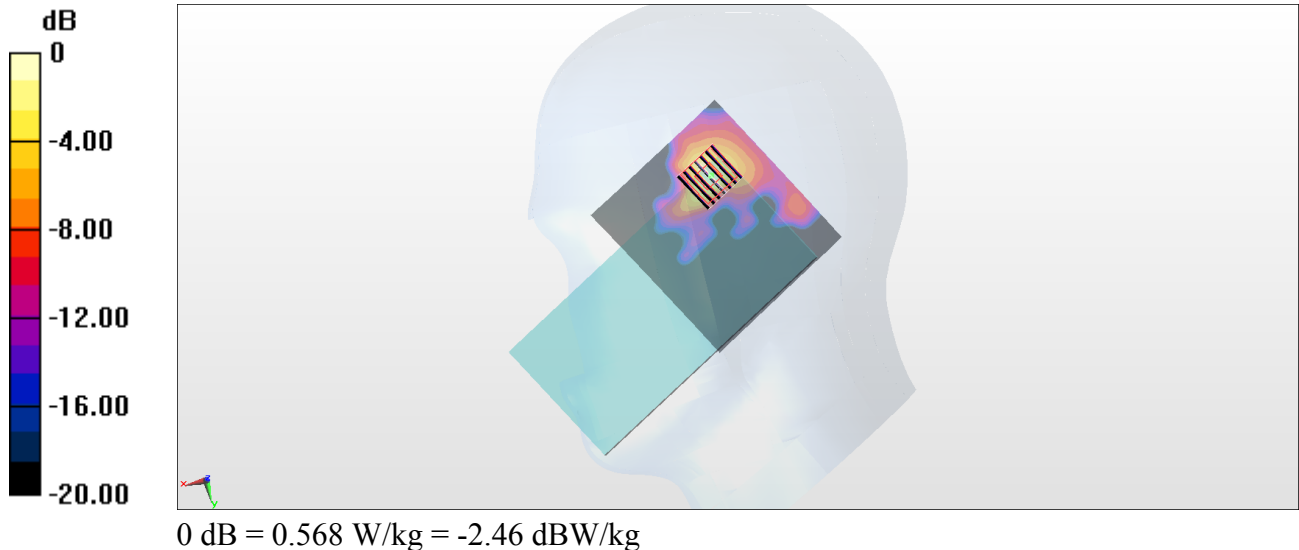
Zoom Scan (7x7x7)/Cube 0: Measurement grid: $dx=4$ mm, $dy=4$ mm, $dz=1.4$ mm

Reference Value = 6.756 V/m; Power Drift = 0.13 dB

Peak SAR (extrapolated) = 0.931 W/kg

SAR(1 g) = 0.231 W/kg; SAR(10 g) = 0.071 W/kg

Maximum value of SAR (measured) = 0.568 W/kg



#10_WLAN5GHz_802.11a_6Mbps_Right Cheek_Ch116

Communication System: 802.11a; Frequency: 5580 MHz; Duty Cycle: 1:1.154

Medium: HSL_5G_180724 Medium parameters used: $f = 5580$ MHz; $\sigma = 4.97$ S/m; $\epsilon_r = 36.562$; $\rho = 1000$ kg/m³

Ambient Temperature : 23.5 °C ; Liquid Temperature : 22.5 °C

DASY5 Configuration

- Probe: EX3DV4 - SN3976; ConvF(4.97, 4.97, 4.97); Calibrated: 2018/1/23
- Sensor-Surface: 1.4mm (Mechanical Surface Detection)
- Electronics: DAE4 Sn1424; Calibrated: 2018/1/18
- Phantom: SAM_Left; Type: QD000P40CD; Serial: S/N:1801
- Measurement SW: DASY52, Version 52.10 (1); SEMCAD X Version 14.6.11 (7439)

Area Scan (101x91x1): Interpolated grid: dx=1.000 mm, dy=1.000 mm

Maximum value of SAR (interpolated) = 0.466 W/kg

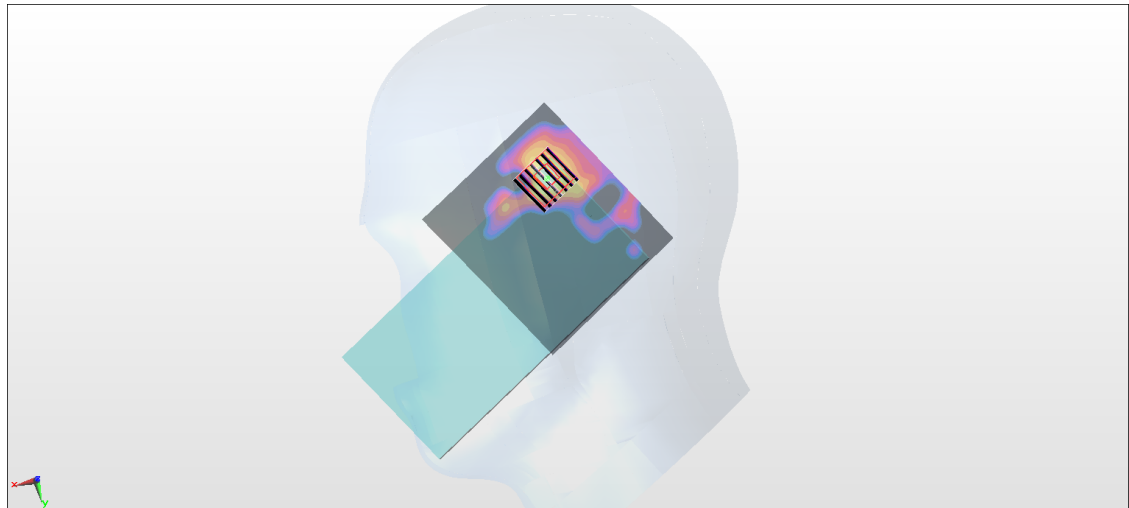
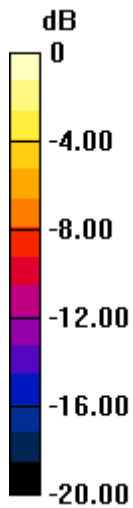
Zoom Scan (7x7x7)/Cube 0: Measurement grid: dx=4mm, dy=4mm, dz=1.4mm

Reference Value = 4.274 V/m; Power Drift = 0.12 dB

Peak SAR (extrapolated) = 0.711 W/kg

SAR(1 g) = 0.174 W/kg; SAR(10 g) = 0.049 W/kg

Maximum value of SAR (measured) = 0.444 W/kg



0 dB = 0.444 W/kg = -3.53 dBW/kg

#11_WLAN5GHz_802.11a 6Mbps_Right Cheek_Ch149

Communication System: 802.11a ; Frequency: 5745 MHz;Duty Cycle: 1:1.154

Medium: HSL_5G_180724 Medium parameters used : $f = 5745$ MHz; $\sigma = 5.165$ S/m; $\epsilon_r = 36.311$; $\rho = 1000$ kg/m³

Ambient Temperature : 23.5 °C ; Liquid Temperature : 22.5 °C

DASY5 Configuration

- Probe: EX3DV4 - SN3976;ConvF(5.04, 5.04, 5.04);Calibrated: 2018/1/23
- Sensor-Surface: 1.4mm (Mechanical Surface Detection)
- Electronics: DAE4 Sn1424; Calibrated: 2018/1/18
- Phantom: SAM_Left; Type: QD000P40CD; Serial: S/N:1801
- Measurement SW: DASY52, Version 52.10 (1); SEMCAD X Version 14.6.11 (7439)

Area Scan (101x101x1): Interpolated grid: dx=1.000 mm, dy=1.000 mm

Maximum value of SAR (interpolated) = 0.0455 W/kg

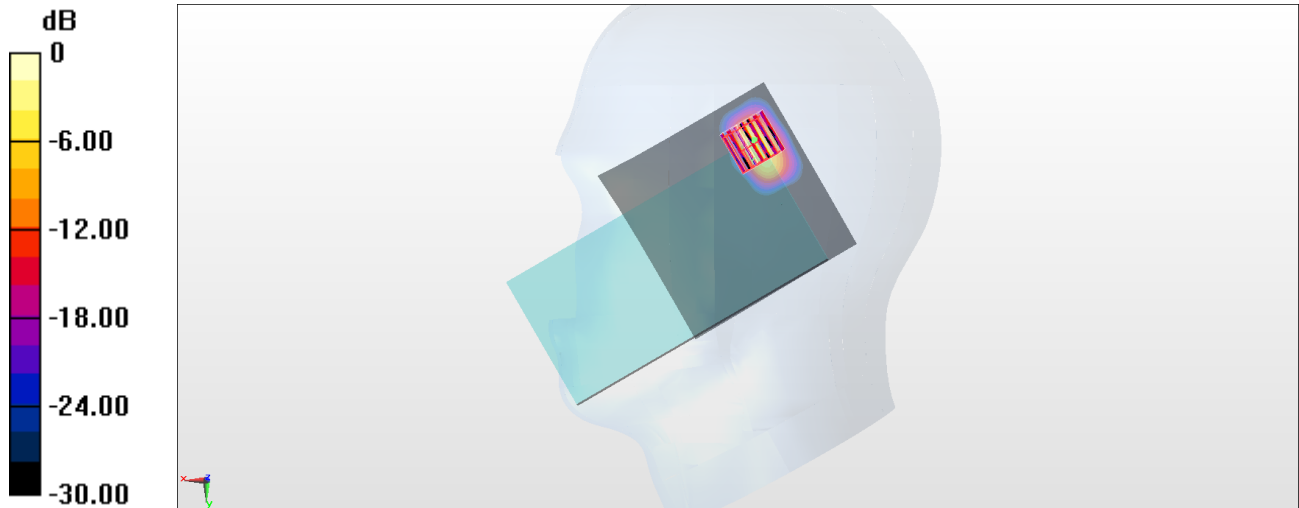
Zoom Scan (7x7x7)/Cube 0: Measurement grid: dx=4mm, dy=4mm, dz=1.4mm

Reference Value = 2.493 V/m; Power Drift = 0.08 dB

Peak SAR (extrapolated) = 0.181 W/kg

SAR(1 g) = 0.042 W/kg; SAR(10 g) = 0.011 W/kg

Maximum value of SAR (measured) = 0.113 W/kg



0 dB = 0.113 W/kg = -9.47 dBW/kg

#12_ Bluetooth_1Mbps_Right Cheek_Ch39

Communication System: Bluetooth; Frequency: 2441 MHz; Duty Cycle: 1:1.303

Medium: HSL_2450_180725 Medium parameters used: $f = 2441$ MHz; $\sigma = 1.77$ S/m; $\epsilon_r = 40.5$; $\rho = 1000$ kg/m³

Ambient Temperature : 23.5 °C; Liquid Temperature : 22.5 °C

DASY5 Configuration:

- Probe: ES3DV3 - SN3169; ConvF(4.69, 4.69, 4.69); Calibrated: 2018/5/28
- Sensor-Surface: 3mm (Mechanical Surface Detection)
- Electronics: DAE4 Sn917; Calibrated: 2017/12/14
- Phantom: SAM_Right; Type: QD000P40CD; Serial: TP:1815
- Measurement SW: DASY52, Version 52.10 (0); SEMCAD X Version 14.6.10 (7417)

Area Scan (81x81x1): Measurement grid: dx=12mm, dy=12mm

Maximum value of SAR (interpolated) = 0.028 mW/g

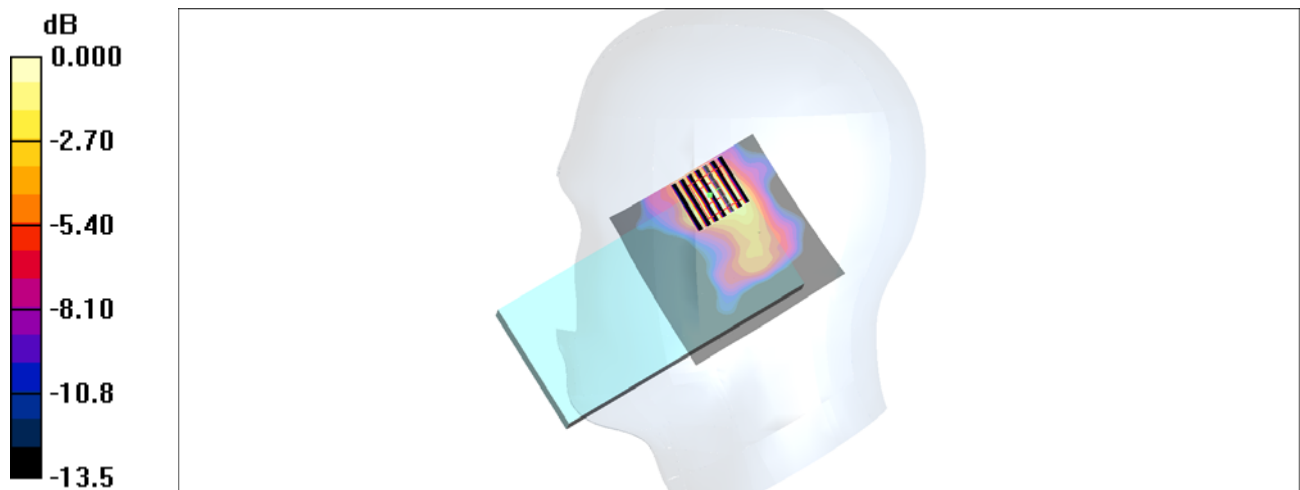
Zoom Scan (7x7x7)/Cube 0: Measurement grid: dx=5mm, dy=5mm, dz=5mm

Reference Value = 3.26 V/m; Power Drift = 0.138 dB

Peak SAR (extrapolated) = 0.100 W/kg

SAR(1 g) = 0.022 mW/g; SAR(10 g) = 0.010 mW/g

Maximum value of SAR (measured) = 0.030 mW/g



0 dB = 0.030mW/g

#13_WCDMA II_RMC 12.2Kbps_Back_10mm_Ch9538

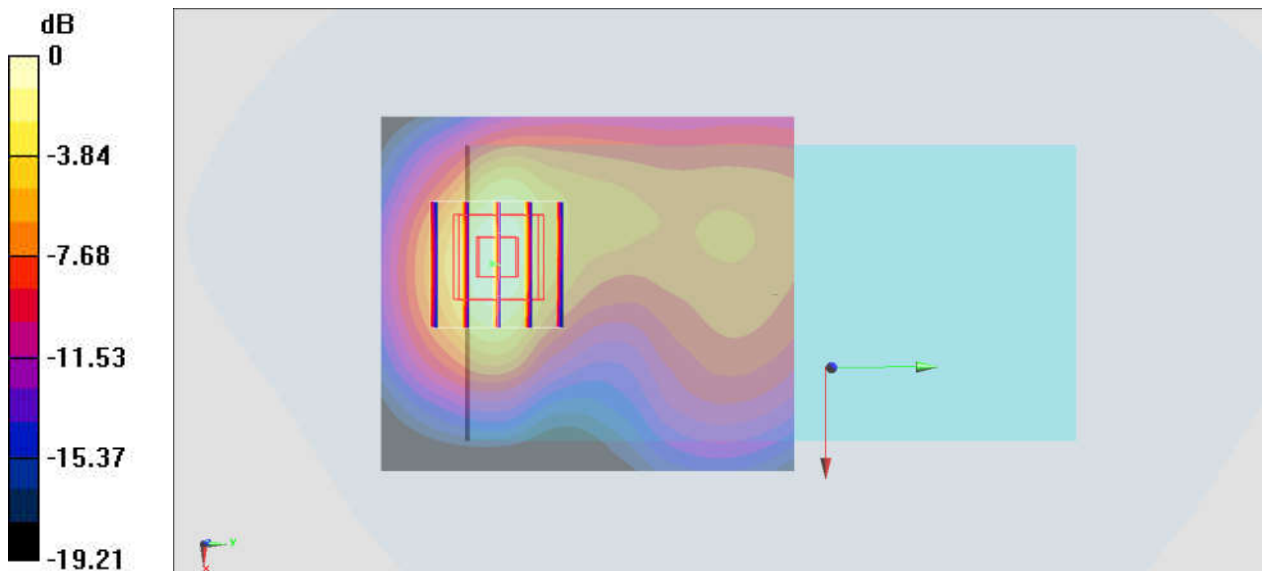
Communication System: WCDMA; Frequency: 1907.6 MHz; Duty Cycle: 1:1
Medium: MSL_1900_180725 Medium parameters used: $f = 1908 \text{ MHz}$; $\sigma = 1.568 \text{ S/m}$; $\epsilon_r = 53.365$;
 $\rho = 1000 \text{ kg/m}^3$
Ambient Temperature : $23.5 \text{ }^\circ\text{C}$; Liquid Temperature : $22.5 \text{ }^\circ\text{C}$

DASY5 Configuration:

- Probe: ES3DV3 - SN3270; ConvF(4.9, 4.9, 4.9); Calibrated: 2017/9/25
- Sensor-Surface: 3mm (Mechanical Surface Detection)
- Electronics: DAE4 Sn778; Calibrated: 2018/5/25
- Phantom: SAM-Right; Type: SAM; Serial: TP-1503
- Measurement SW: DASY52, Version 52.10 (1); SEMCAD X Version 14.6.11 (7439)

Area Scan (61x71x1): Interpolated grid: $dx=1.500 \text{ mm}$, $dy=1.500 \text{ mm}$
Maximum value of SAR (interpolated) = 1.83 W/kg

Zoom Scan (5x5x7)/Cube 0: Measurement grid: $dx=8\text{mm}$, $dy=8\text{mm}$, $dz=5\text{mm}$
Reference Value = 22.10 V/m ; Power Drift = -0.17 dB
Peak SAR (extrapolated) = 2.54 W/kg
SAR(1 g) = 1.42 W/kg ; SAR(10 g) = 0.752 W/kg
Maximum value of SAR (measured) = 1.77 W/kg



0 dB = $1.77 \text{ W/kg} = 2.48 \text{ dBW/kg}$

#14_WCDMA V_RMC 12.2Kbps_Back_10mm_Ch4182

Communication System: WCDMA ; Frequency: 836.4 MHz; Duty Cycle: 1:1

Medium: MSL_850_180719 Medium parameters used : $f = 836.4$ MHz; $\sigma = 0.967$ S/m; $\epsilon_r = 56.934$; $\rho = 1000$ kg/m³

Ambient Temperature : 23.7 °C ; Liquid Temperature : 22.7 °C

DASY5 Configuration:

- Probe: ES3DV3 - SN3169; ConvF(6.19, 6.19, 6.19); Calibrated: 2018/5/28
- Sensor-Surface: 3mm (Mechanical Surface Detection)
- Electronics: DAE3 Sn577; Calibrated: 2017/9/25
- Phantom: SAM_Right; Type: SAM; Serial: TP:1479
- Measurement SW: DASY52, Version 52.10 (1); SEMCAD X Version 14.6.11 (7439)

Area Scan (61x121x1): Interpolated grid: dx=1.500 mm, dy=1.500 mm

Maximum value of SAR (interpolated) = 0.542 W/kg

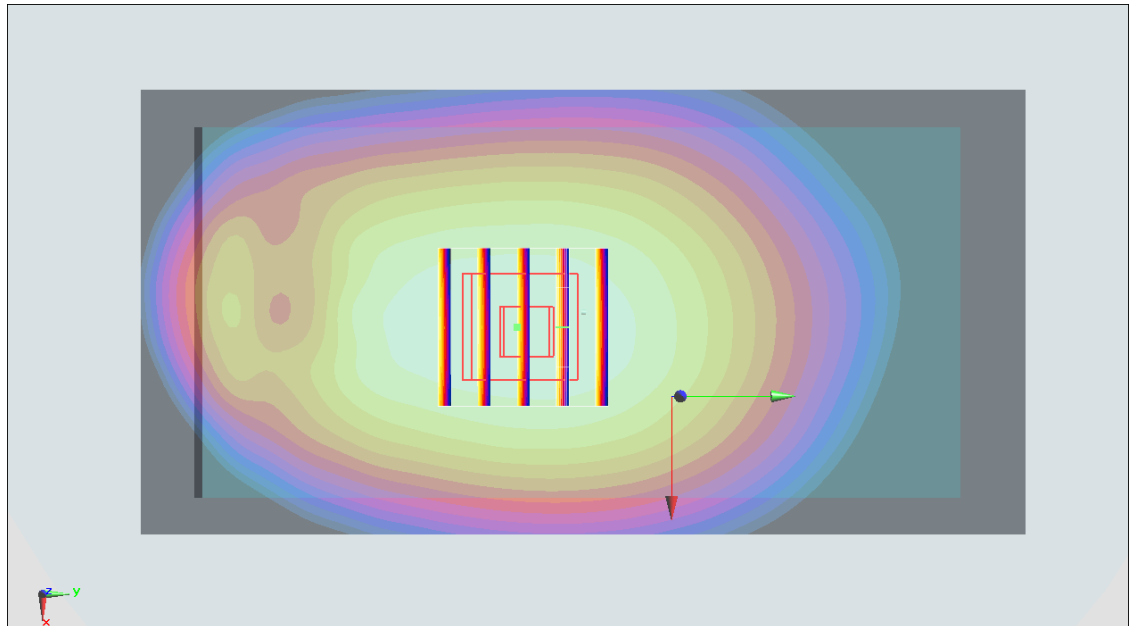
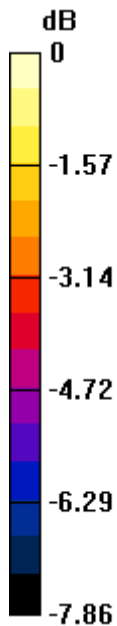
Zoom Scan (5x5x7)/Cube 0: Measurement grid: dx=8mm, dy=8mm, dz=5mm

Reference Value = 23.88 V/m; Power Drift = 0.02 dB

Peak SAR (extrapolated) = 0.628 W/kg

SAR(1 g) = 0.506 W/kg; SAR(10 g) = 0.392 W/kg

Maximum value of SAR (measured) = 0.551 W/kg



#15_LTE Band 2_20M_QPSK_1_49_Back_10mm_Ch19100

Communication System: LTE; Frequency: 1900 MHz; Duty Cycle: 1:1

Medium: MSL_1900_180725 Medium parameters used: $f = 1900$ MHz; $\sigma = 1.56$ S/m; $\epsilon_r = 53.388$; $\rho = 1000$ kg/m³

Ambient Temperature : 23.5 °C ; Liquid Temperature : 22.5 °C

DASY5 Configuration:

- Probe: ES3DV3 - SN3270; ConvF(4.9, 4.9, 4.9); Calibrated: 2017/9/25
- Sensor-Surface: 3mm (Mechanical Surface Detection)
- Electronics: DAE4 Sn778; Calibrated: 2018/5/25
- Phantom: SAM-Right; Type: SAM; Serial: TP-1503
- Measurement SW: DASY52, Version 52.10 (1); SEMCAD X Version 14.6.11 (7439)

Area Scan (61x61x1): Interpolated grid: dx=1.500 mm, dy=1.500 mm

Maximum value of SAR (interpolated) = 1.73 W/kg

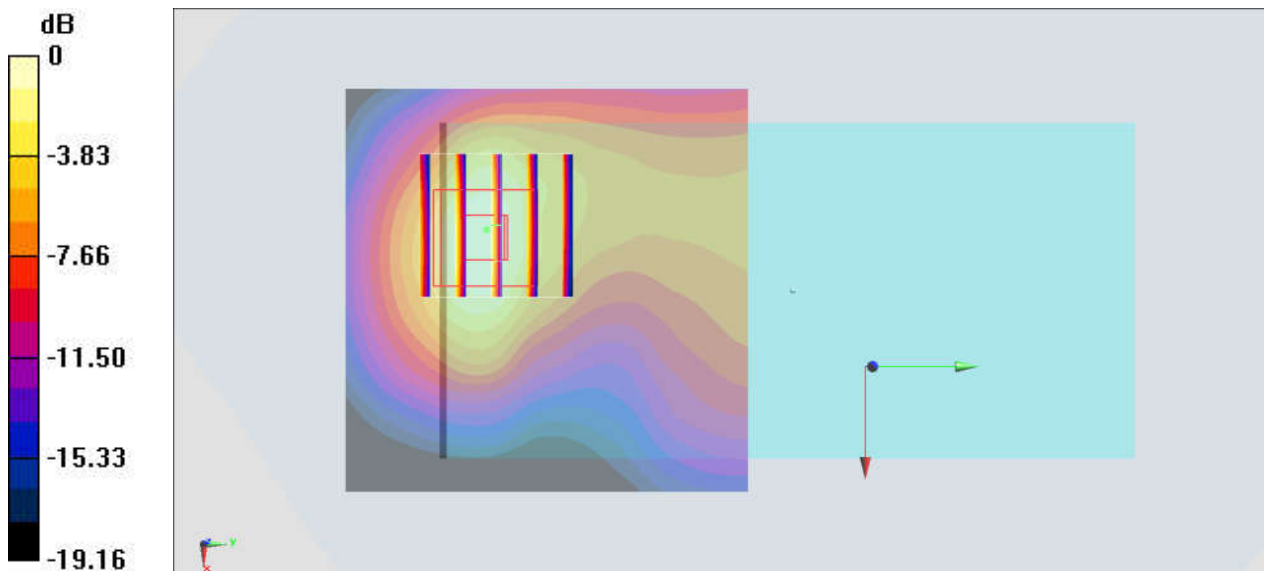
Zoom Scan (5x5x7)/Cube 0: Measurement grid: dx=8mm, dy=8mm, dz=5mm

Reference Value = 23.66 V/m; Power Drift = -0.10 dB

Peak SAR (extrapolated) = 2.43 W/kg

SAR(1 g) = 1.36 W/kg; SAR(10 g) = 0.722 W/kg

Maximum value of SAR (measured) = 1.67 W/kg



0 dB = 1.67 W/kg = 2.23 dBW/kg

#16_LTE Band 4_20M_QPSK_1_49_Back_10mm_Ch20175

Communication System: LTE; Frequency: 1732.5 MHz; Duty Cycle: 1:1

Medium: MSL_1750_180719 Medium parameters used: $f = 1733$ MHz; $\sigma = 1.473$ S/m; $\epsilon_r = 53.51$; $\rho = 1000$ kg/m³

Ambient Temperature : 23.7 °C ; Liquid Temperature : 22.7 °C

DASY5 Configuration:

- Probe: ES3DV3 - SN3169; ConvF(5.06, 5.06, 5.06); Calibrated: 2018/5/28
- Sensor-Surface: 3mm (Mechanical Surface Detection)
- Electronics: DAE3 Sn577; Calibrated: 2017/9/25
- Phantom: SAM_Left; Type: QD000P40CD; Serial: TP:1477
- Measurement SW: DASY52, Version 52.10 (1); SEMCAD X Version 14.6.11 (7439)

Area Scan (61x61x1): Interpolated grid: dx=1.500 mm, dy=1.500 mm

Maximum value of SAR (interpolated) = 1.06 W/kg

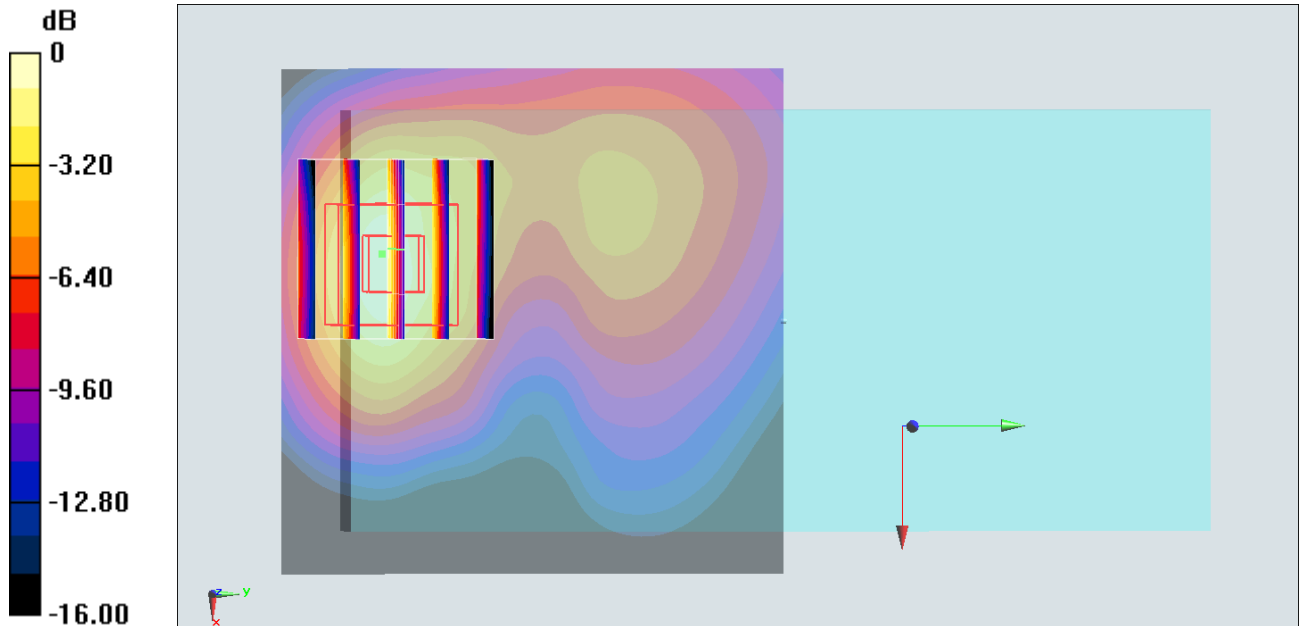
Zoom Scan (5x5x7)/Cube 0: Measurement grid: dx=8mm, dy=8mm, dz=5mm

Reference Value = 11.57 V/m; Power Drift = 0.13 dB

Peak SAR (extrapolated) = 1.55 W/kg

SAR(1 g) = 0.915 W/kg; SAR(10 g) = 0.492 W/kg

Maximum value of SAR (measured) = 1.10 W/kg



0 dB = 1.10 W/kg = 0.41 dBW/kg

#17_LTE Band 5_10M_QPSK_1_25_Back_10mm_Ch20525

Communication System: LTE; Frequency: 836.5 MHz; Duty Cycle: 1:1

Medium: MSL_850_180719 Medium parameters used : $f = 836.5$ MHz; $\sigma = 0.967$ S/m; $\epsilon_r = 56.934$; $\rho = 1000$ kg/m³

Ambient Temperature : 23.7 °C ; Liquid Temperature : 22.7 °C

DASY5 Configuration:

- Probe: ES3DV3 - SN3169; ConvF(6.19, 6.19, 6.19); Calibrated: 2018/5/28
- Sensor-Surface: 3mm (Mechanical Surface Detection)
- Electronics: DAE3 Sn577; Calibrated: 2017/9/25
- Phantom: SAM_Right; Type: SAM; Serial: TP:1479
- Measurement SW: DASY52, Version 52.10 (1); SEMCAD X Version 14.6.11 (7439)

Area Scan (61x101x1): Interpolated grid: dx=1.500 mm, dy=1.500 mm

Maximum value of SAR (interpolated) = 0.608 W/kg

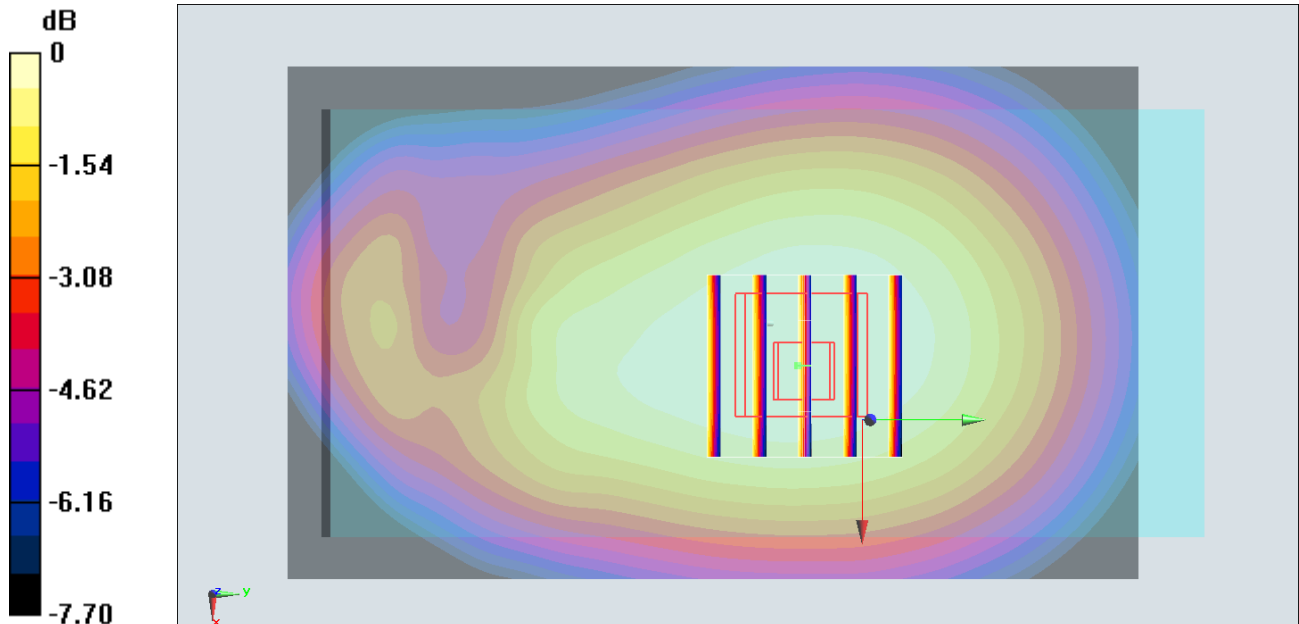
Zoom Scan (5x5x7)/Cube 0: Measurement grid: dx=8mm, dy=8mm, dz=5mm

Reference Value = 25.87 V/m; Power Drift = -0.12 dB

Peak SAR (extrapolated) = 0.668 W/kg

SAR(1 g) = 0.531 W/kg; SAR(10 g) = 0.409 W/kg

Maximum value of SAR (measured) = 0.581 W/kg



#18_LTE Band 12_10M_QPSK_1_25_Back_10mm_Ch23095

Communication System: LTE ; Frequency: 707.5 MHz; Duty Cycle: 1:1

Medium: MSL_750_180720 Medium parameters used: $f = 707.5$ MHz; $\sigma = 0.932$ S/m; $\epsilon_r = 54.955$; $\rho = 1000$ kg/m³

Ambient Temperature : 23.6 °C ; Liquid Temperature : 22.6 °C

DASY5 Configuration:

- Probe: ES3DV3 - SN3169; ConvF(6.3, 6.3, 6.3); Calibrated: 2018/5/28;
- Sensor-Surface: 3mm (Mechanical Surface Detection)
- Electronics: DAE3 Sn577; Calibrated: 2017/9/25
- Phantom: SAM_Right; Type: SAM; Serial: TP:1479
- Measurement SW: DASY52, Version 52.8 (8); SEMCAD X Version 14.6.10 (7373)

Area Scan (61x121x1): Interpolated grid: dx=1.500 mm, dy=1.500 mm

Maximum value of SAR (interpolated) = 0.465 W/kg

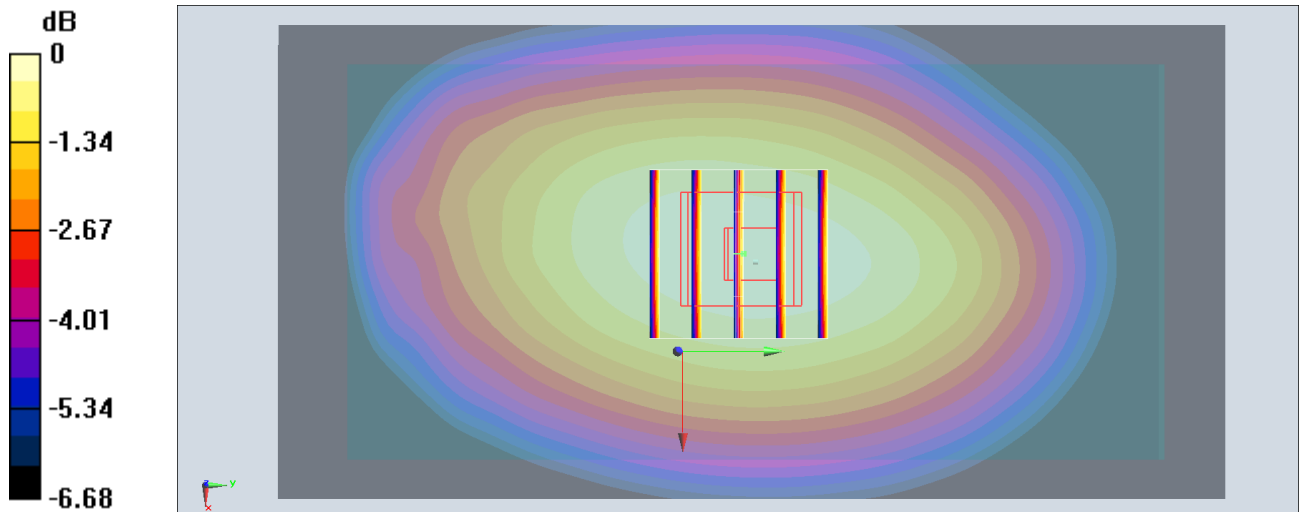
Zoom Scan (5x5x7)/Cube 0: Measurement grid: dx=8mm, dy=8mm, dz=5mm

Reference Value = 22.13 V/m; Power Drift = 0.05 dB

Peak SAR (extrapolated) = 0.525 W/kg

SAR(1 g) = 0.435 W/kg; SAR(10 g) = 0.344 W/kg

Maximum value of SAR (measured) = 0.471 W/kg



0 dB = 0.471 W/kg = -3.27 dBW/kg

#19_LTE Band 13_10M_QPSK_1_25_Back_10mm_Ch23230

Communication System: LTE; Frequency: 782 MHz; Duty Cycle: 1:1

Medium: MSL_750_180720 Medium parameters used: $f = 782 \text{ MHz}$; $\sigma = 1.002 \text{ S/m}$; $\epsilon_r = 54.248$; $\rho = 1000 \text{ kg/m}^3$

Ambient Temperature : $23.6 \text{ }^\circ\text{C}$; Liquid Temperature : $22.6 \text{ }^\circ\text{C}$

DASY5 Configuration:

- Probe: ES3DV3 - SN3169; ConvF(6.3, 6.3, 6.3); Calibrated: 2018/5/28;
- Sensor-Surface: 3mm (Mechanical Surface Detection)
- Electronics: DAE3 Sn577; Calibrated: 2017/9/25
- Phantom: SAM_Right; Type: SAM; Serial: TP:1479
- Measurement SW: DASY52, Version 52.8 (8); SEMCAD X Version 14.6.10 (7373)

Area Scan (61x121x1): Interpolated grid: $dx=1.500 \text{ mm}$, $dy=1.500 \text{ mm}$

Maximum value of SAR (interpolated) = 0.643 W/kg

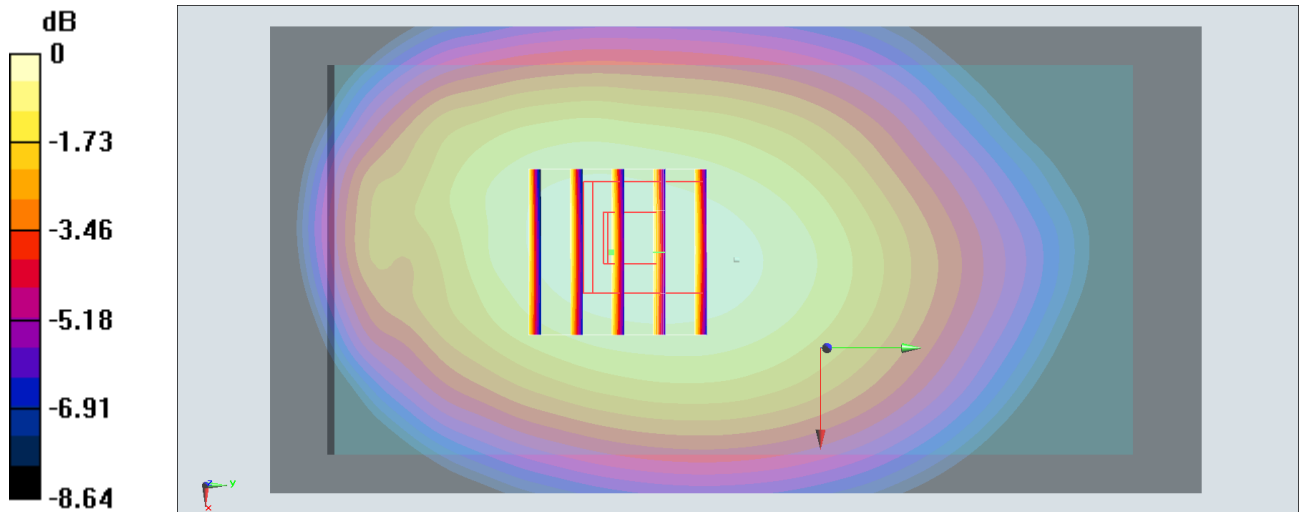
Zoom Scan (5x5x7)/Cube 0: Measurement grid: $dx=8\text{mm}$, $dy=8\text{mm}$, $dz=5\text{mm}$

Reference Value = 26.27 V/m ; Power Drift = -0.05 dB

Peak SAR (extrapolated) = 0.738 W/kg

SAR(1 g) = 0.593 W/kg ; SAR(10 g) = 0.455 W/kg

Maximum value of SAR (measured) = 0.643 W/kg



0 dB = 0.643 W/kg = -1.92 dBW/kg

#20_WLAN2.4GHz_802.11b 1Mbps_Left Side_10mm_Ch11

Communication System: 802.11b ; Frequency: 2462 MHz; Duty Cycle: 1:1

Medium: MSL_2450_180723 Medium parameters used: $f = 2462 \text{ MHz}$; $\sigma = 1.994 \text{ S/m}$; $\epsilon_r = 51.136$; $\rho = 1000 \text{ kg/m}^3$

Ambient Temperature : $23.5 \text{ }^\circ\text{C}$; Liquid Temperature : $22.5 \text{ }^\circ\text{C}$

DASY5 Configuration

- Probe: ES3DV3 - SN3169; ConvF(4.4, 4.4, 4.4); Calibrated: 2018/5/28
- Sensor-Surface: 3mm (Mechanical Surface Detection)
- Electronics: DAE3 Sn577; Calibrated: 2017/9/25
- Phantom: SAM_Right; Type: QD000P40CD; Serial: S/N:1796
- Measurement SW: DASY52, Version 52.10 (1); SEMCAD X Version 14.6.11 (7439)

Area Scan (51x151x1): Interpolated grid: $dx=1.200 \text{ mm}$, $dy=1.200 \text{ mm}$

Maximum value of SAR (interpolated) = 0.240 W/kg

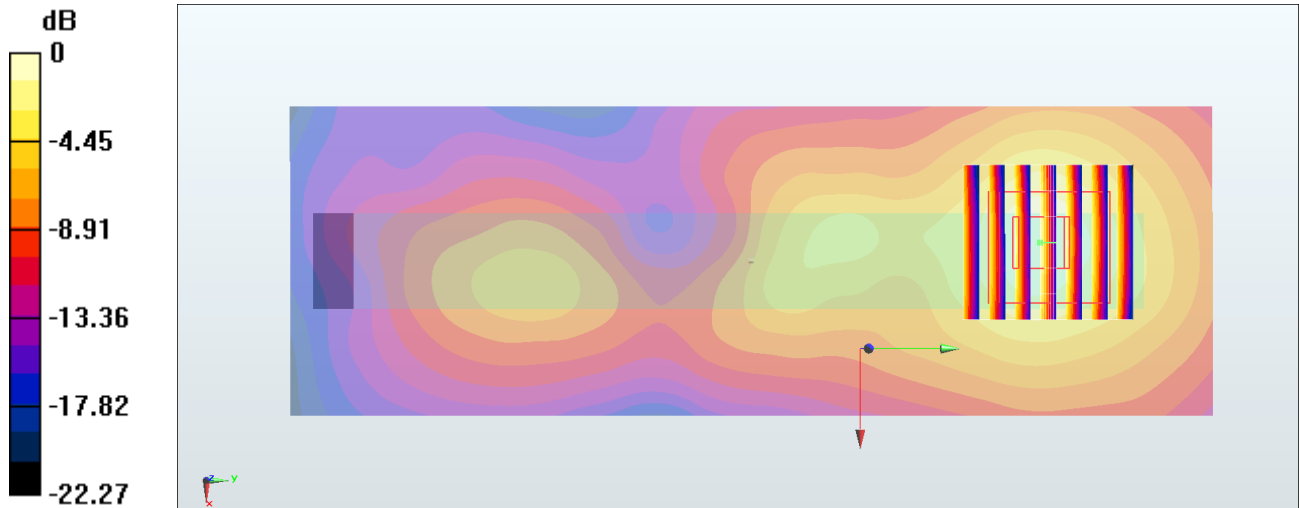
Zoom Scan (7x7x7)/Cube 0: Measurement grid: $dx=5\text{mm}$, $dy=5\text{mm}$, $dz=5\text{mm}$

Reference Value = 7.317 V/m ; Power Drift = 0.02 dB

Peak SAR (extrapolated) = 0.367 W/kg

SAR(1 g) = 0.184 W/kg ; SAR(10 g) = 0.093 W/kg

Maximum value of SAR (measured) = 0.238 W/kg



0 dB = 0.238 W/kg = -6.23 dBW/kg

#21_WLAN5GHz_802.11n-HT40 MCS0_Back_10mm_Ch46

Communication System: 802.11n; Frequency: 5230 MHz; Duty Cycle: 1:1.171

Medium: MSL_5G_180824 Medium parameters used: $f = 5230$ MHz; $\sigma = 5.448$ S/m; $\epsilon_r = 48.296$; $\rho = 1000$ kg/m³

Ambient Temperature : 23.6 °C ; Liquid Temperature : 22.6 °C

DASY5 Configuration:

- Probe: EX3DV4 - SN3925; ConvF(4.44, 4.44, 4.44) @ 5230 MHz; Calibrated: 2018/5/31
- Sensor-Surface: 1.4mm (Mechanical Surface Detection)
- Electronics: DAE3 Sn495; Calibrated: 2018/5/24
- Phantom: SAM_Left; Type: QD000P40CD; Serial: TP:1477
- Measurement SW: DASY52, Version 52.10 (1); SEMCAD X Version 14.6.11 (7439)

Area Scan (101x101x1): Interpolated grid: dx=1.000 mm, dy=1.000 mm

Maximum value of SAR (interpolated) = 0.556 W/kg

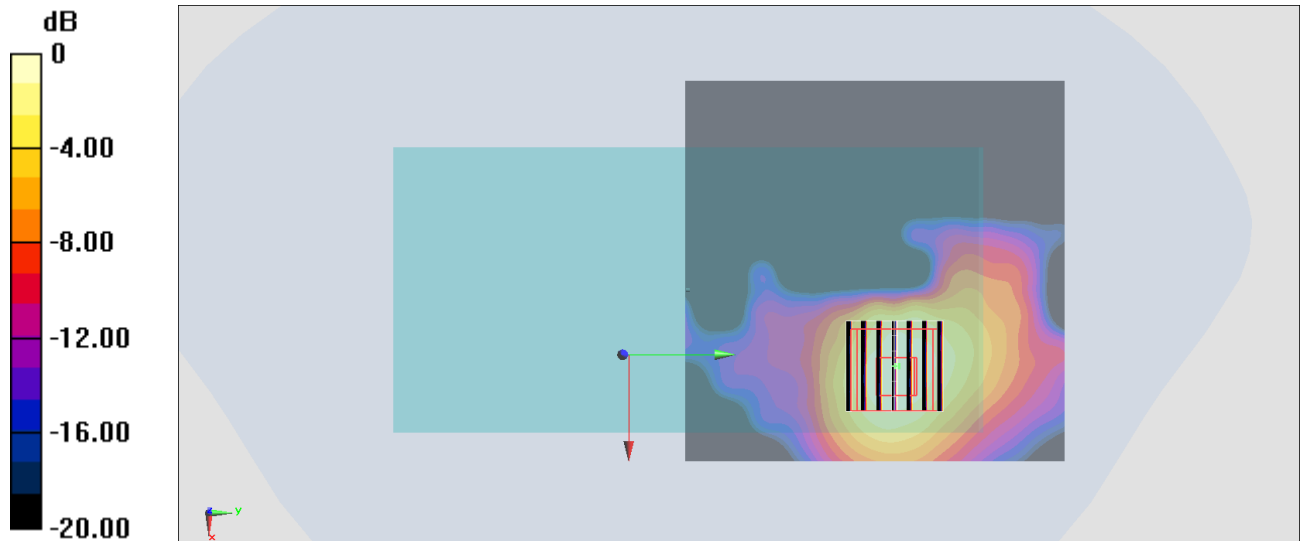
Zoom Scan (7x7x7)/Cube 0: Measurement grid: dx=4mm, dy=4mm, dz=1.4mm

Reference Value = 10.18 V/m; Power Drift = -0.14 dB

Peak SAR (extrapolated) = 0.731 W/kg

SAR(1 g) = 0.223 W/kg; SAR(10 g) = 0.082 W/kg

Maximum value of SAR (measured) = 0.533 W/kg



0 dB = 0.533 W/kg = -2.73 dBW/kg

#22_WLAN5GHz_802.11a 6Mbps_Back_10mm_Ch149

Communication System: 802.11a ; Frequency: 5745 MHz; Duty Cycle: 1:1.154

Medium: MSL_5G_180723 Medium parameters used : $f = 5745$ MHz; $\sigma = 6.186$ S/m; $\epsilon_r = 46.851$; $\rho = 1000$ kg/m³

Ambient Temperature : 23.5 °C ; Liquid Temperature : 22.5 °C

DASY5 Configuration:

- Probe: EX3DV4 - SN3931; ConvF(4.32, 4.32, 4.32) @ 5745 MHz; Calibrated: 2017/9/29
- Sensor-Surface: 1.4mm (Mechanical Surface Detection)
- Electronics: DAE4 Sn1399; Calibrated: 2017/11/16
- Phantom: SAM_Left; Type: QD000P40CD; Serial: TP:1477
- Measurement SW: DASY52, Version 52.10 (1); SEMCAD X Version 14.6.11 (7439)

Area Scan (121x101x1): Interpolated grid: dx=1.000 mm, dy=1.000 mm

Maximum value of SAR (interpolated) = 0.296 W/kg

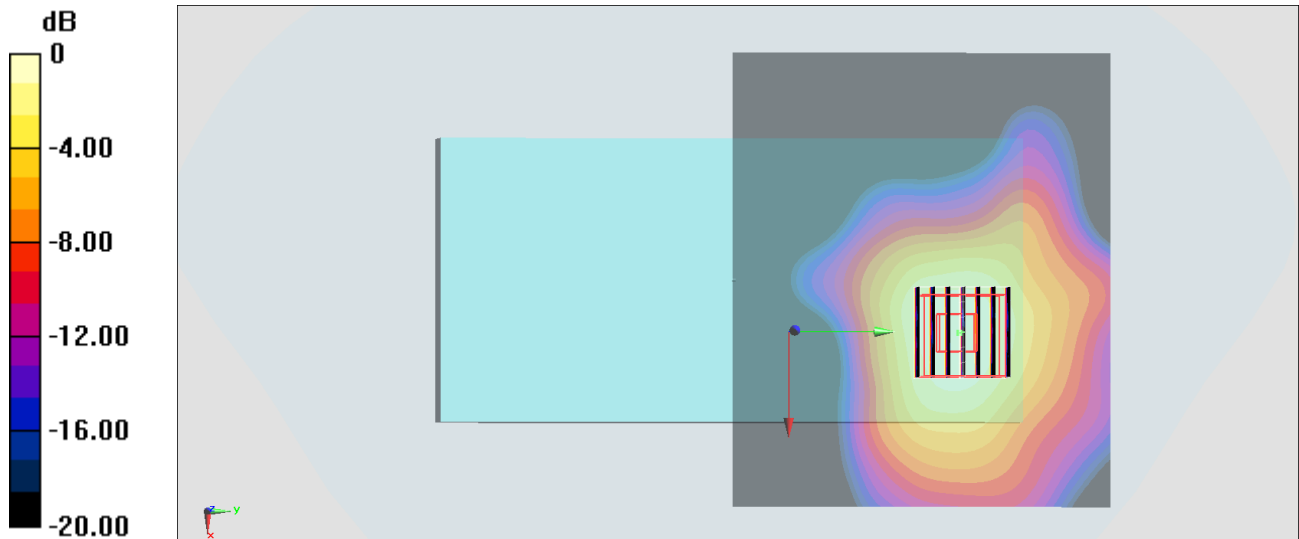
Zoom Scan (7x7x7)/Cube 0: Measurement grid: dx=4mm, dy=4mm, dz=1.4mm

Reference Value = 7.742 V/m; Power Drift = -0.04 dB

Peak SAR (extrapolated) = 0.551 W/kg

SAR(1 g) = 0.133 W/kg; SAR(10 g) = 0.055 W/kg

Maximum value of SAR (measured) = 0.298 W/kg



0 dB = 0.298 W/kg = -5.26 dBW/kg

#23_Bluetooth_1Mbps_Left Side_10mm_Ch39

Communication System: Bluetooth ; Frequency: 2441 MHz;Duty Cycle: 1:1.303

Medium: MSL_2450_180726 Medium parameters used: $f = 2441$ MHz; $\sigma = 1.984$ S/m; $\epsilon_r = 53.48$; $\rho = 1000$ kg/m³

Ambient Temperature : 23.4 °C ; Liquid Temperature : 22.4 °C

DASY5 Configuration:

- Probe: ES3DV3 - SN3270; ConvF(4.39, 4.39, 4.39); Calibrated: 2017/9/25
- Sensor-Surface: 3mm (Mechanical Surface Detection)
- Electronics: DAE4 Sn778; Calibrated: 2018/5/25
- Phantom: SAM_Left; Type: QD000P40CD; Serial: TP:1431
- Measurement SW: DASY52, Version 52.10 (1);SEMCAD X Version 14.6.11 (7439)

Area Scan (41x71x1): Interpolated grid: dx=1.200 mm, dy=1.200 mm

Maximum value of SAR (interpolated) = 0.0181 W/kg

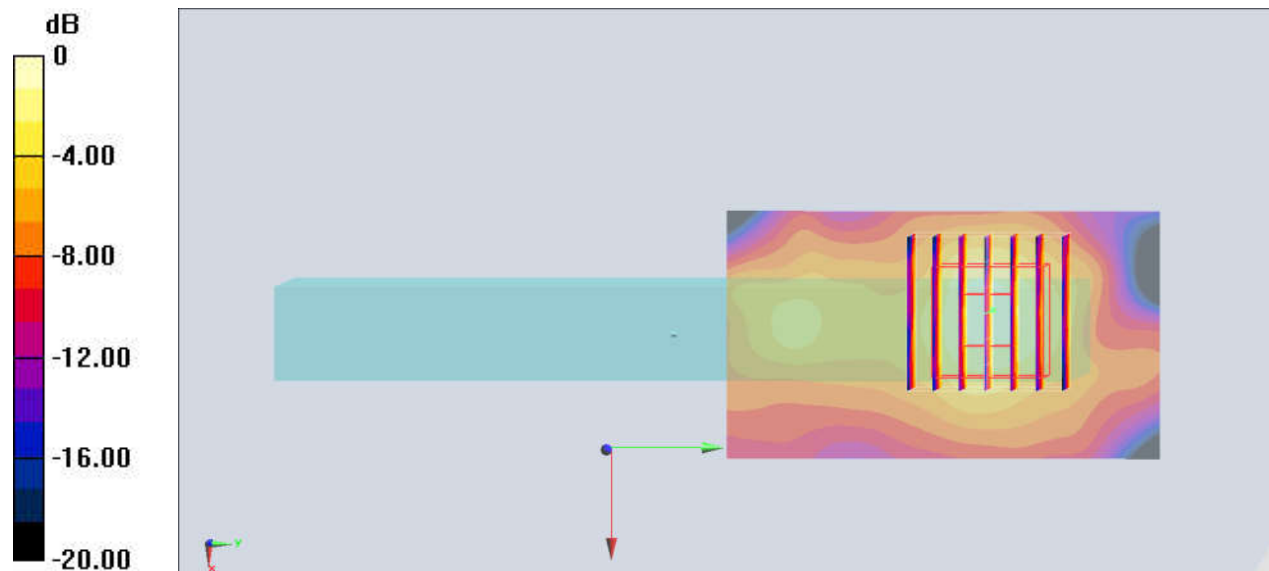
Zoom Scan (7x7x7)/Cube 0: Measurement grid: dx=5mm, dy=5mm, dz=5mm

Reference Value = 2.994 V/m; Power Drift = 0.07 dB

Peak SAR (extrapolated) = 0.0340 W/kg

SAR(1 g) = 0.016 W/kg; SAR(10 g) = 0.00825 W/kg

Maximum value of SAR (measured) = 0.0210 W/kg



0 dB = 0.0210 W/kg = -16.78 dBW/kg

#24_WCDMA II_RMC 12.2Kbps_Back_0mm_Ch9262

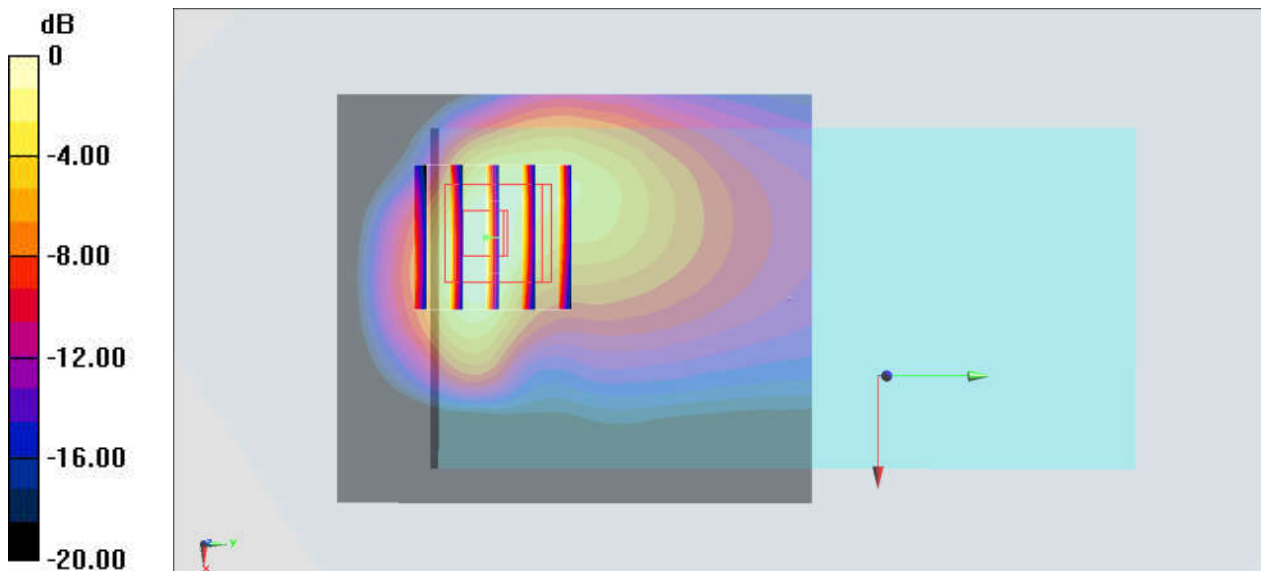
Communication System: WCDMA; Frequency: 1852.4 MHz; Duty Cycle: 1:1
Medium: MSL_1900_180725 Medium parameters used : $f = 1852.4$ MHz; $\sigma = 1.509$ S/m; $\epsilon_r = 53.595$; $\rho = 1000$ kg/m³
Ambient Temperature : 23.5 °C ; Liquid Temperature : 22.5 °C

DASY5 Configuration:

- Probe: ES3DV3 - SN3270; ConvF(4.9, 4.9, 4.9); Calibrated: 2017/9/25
- Sensor-Surface: 3mm (Mechanical Surface Detection)
- Electronics: DAE4 Sn778; Calibrated: 2018/5/25
- Phantom: SAM-Right; Type: SAM; Serial: TP-1503
- Measurement SW: DASY52, Version 52.10 (1); SEMCAD X Version 14.6.11 (7439)

Area Scan (61x71x1): Interpolated grid: dx=1.500 mm, dy=1.500 mm
Maximum value of SAR (interpolated) = 7.26 W/kg

Zoom Scan (5x5x7)/Cube 0: Measurement grid: dx=8mm, dy=8mm, dz=5mm
Reference Value = 46.37 V/m; Power Drift = 0.11 dB
Peak SAR (extrapolated) = 10.1 W/kg
SAR(1 g) = 5 W/kg; SAR(10 g) = 2.46 W/kg
Maximum value of SAR (measured) = 6.34 W/kg



0 dB = 6.34 W/kg = 8.02 dBW/kg

#25_LTE Band 2_20M_QPSK_1_49_Back_0mm_Ch19100

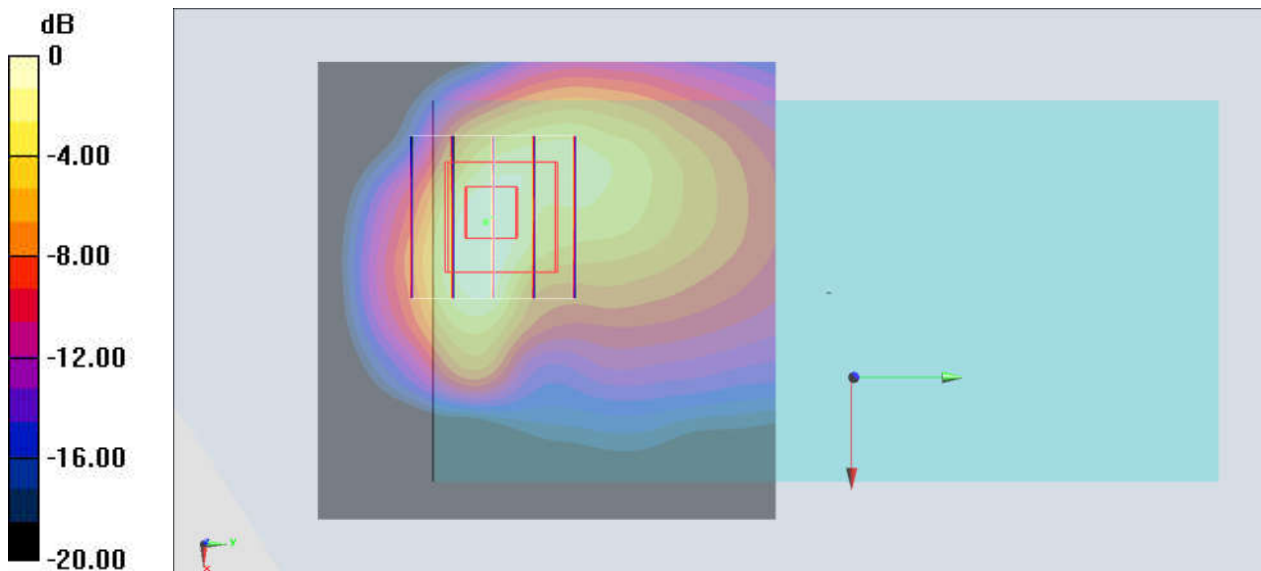
Communication System: LTE; Frequency: 1900 MHz; Duty Cycle: 1:1
Medium: MSL_1900_180725 Medium parameters used: $f = 1900$ MHz; $\sigma = 1.56$ S/m; $\epsilon_r = 53.388$; $\rho = 1000$ kg/m³
Ambient Temperature : 23.5 °C ; Liquid Temperature : 22.5 °C

DASY5 Configuration:

- Probe: ES3DV3 - SN3270; ConvF(4.9, 4.9, 4.9); Calibrated: 2017/9/25
- Sensor-Surface: 3mm (Mechanical Surface Detection)
- Electronics: DAE4 Sn778; Calibrated: 2018/5/25
- Phantom: SAM-Right; Type: SAM; Serial: TP-1503
- Measurement SW: DASY52, Version 52.10 (1); SEMCAD X Version 14.6.11 (7439)

Area Scan (61x61x1): Interpolated grid: dx=1.500 mm, dy=1.500 mm
Maximum value of SAR (interpolated) = 7.51 W/kg

Zoom Scan (5x5x7)/Cube 0: Measurement grid: dx=8mm, dy=8mm, dz=5mm
Reference Value = 48.30 V/m; Power Drift = 0.05 dB
Peak SAR (extrapolated) = 11.0 W/kg
SAR(1 g) = 5.43 W/kg; SAR(10 g) = 2.67 W/kg
Maximum value of SAR (measured) = 6.93 W/kg



0 dB = 6.93 W/kg = 8.41 dBW/kg

#26_WLAN5GHz_802.11a_6Mbps_Back_0mm_Ch60

Communication System: 802.11a; Frequency: 5300 MHz; Duty Cycle: 1:1.154

Medium: MSL_5G_180723 Medium parameters used : $f = 5300$ MHz; $\sigma = 5.611$ S/m; $\epsilon_r = 47.683$; $\rho = 1000$ kg/m³

Ambient Temperature : 23.5 °C; Liquid Temperature : 22.5 °C

DASY5 Configuration:

- Probe: EX3DV4 - SN3931; ConvF(4.7, 4.7, 4.7); Calibrated: 2017/9/29
- Sensor-Surface: 1.4mm (Mechanical Surface Detection)
- Electronics: DAE4 Sn1399; Calibrated: 2017/11/16
- Phantom: SAM_Left; Type: QD000P40CD; Serial: TP:1477
- Measurement SW: DASY52, Version 52.10 (1); SEMCAD X Version 14.6.11 (7439)

Area Scan (101x171x1): Interpolated grid: dx=1.000 mm, dy=1.000 mm

Maximum value of SAR (interpolated) = 4.62 W/kg

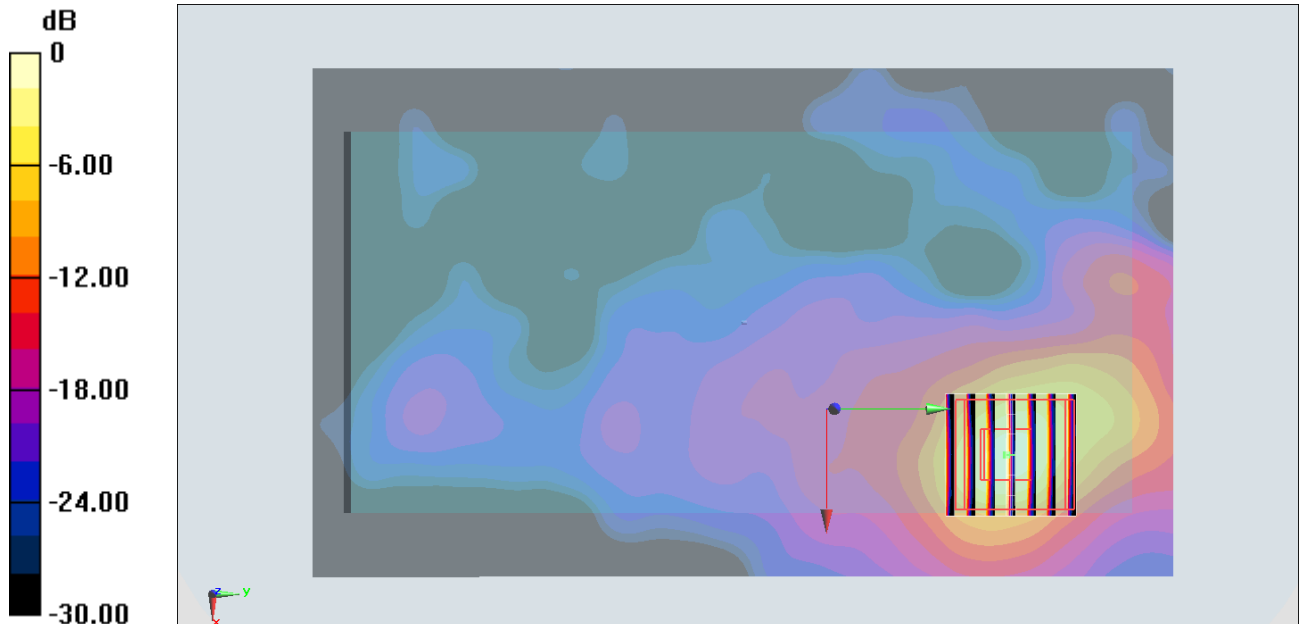
Zoom Scan (7x7x7)/Cube 0: Measurement grid: dx=4mm, dy=4mm, dz=1.4mm

Reference Value = 1.499 V/m; Power Drift = -0.19 dB

Peak SAR (extrapolated) = 9.05 W/kg

SAR(1 g) = 1.99 W/kg; SAR(10 g) = 0.542 W/kg

Maximum value of SAR (measured) = 5.35 W/kg



0 dB = 5.35 W/kg = 7.28 dBW/kg

#27_WLAN5GHz_802.11a 6Mbps_Back_0mm_Ch100

Communication System: 802.11a ; Frequency: 5500 MHz; Duty Cycle: 1:1.154

Medium: MSL_5G_180723 Medium parameters used: $f = 5500$ MHz; $\sigma = 5.862$ S/m; $\epsilon_r = 47.31$; $\rho = 1000$ kg/m³

Ambient Temperature : 23.5 °C ; Liquid Temperature : 22.5 °C

DASY5 Configuration:

- Probe: EX3DV4 - SN3931; ConvF(3.99, 3.99, 3.99); Calibrated: 2017/9/29
- Sensor-Surface: 1.4mm (Mechanical Surface Detection)
- Electronics: DAE4 Sn1399; Calibrated: 2017/11/16
- Phantom: SAM_Left; Type: QD000P40CD; Serial: TP:1477
- Measurement SW: DASY52, Version 52.10 (1); SEMCAD X Version 14.6.11 (7439)

Area Scan (101x91x1): Interpolated grid: dx=1.000 mm, dy=1.000 mm

Maximum value of SAR (interpolated) = 2.04 W/kg

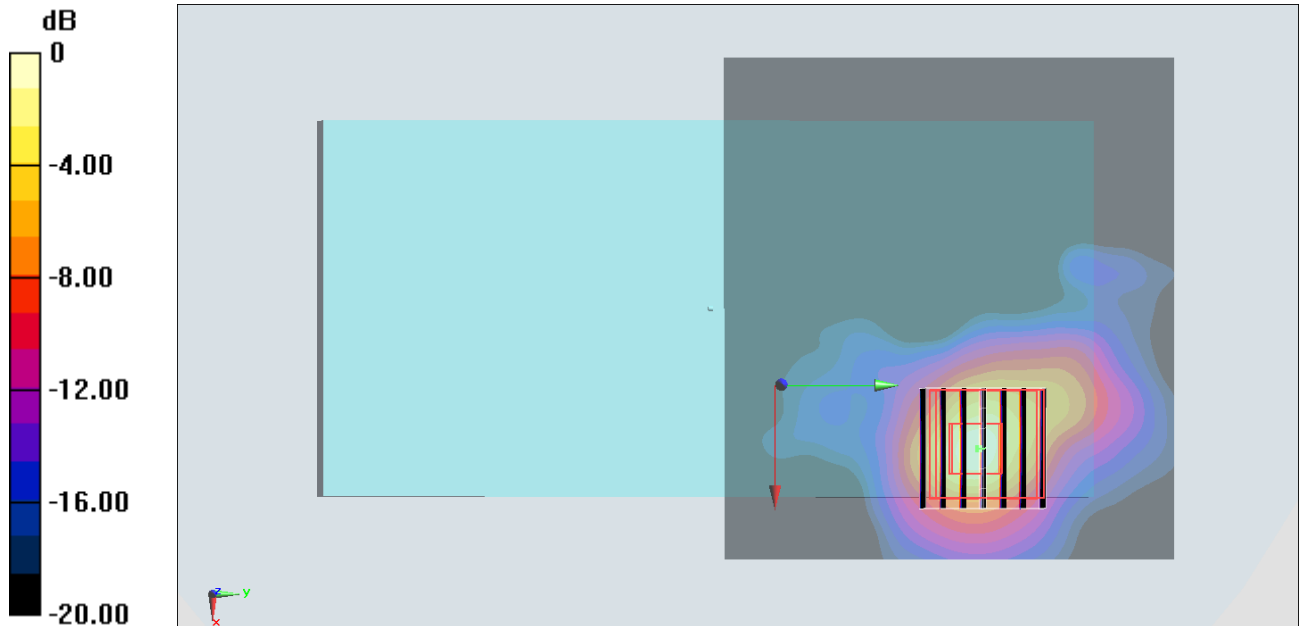
Zoom Scan (7x7x7)/Cube 0: Measurement grid: dx=4mm, dy=4mm, dz=1.4mm

Reference Value = 11.43 V/m; Power Drift = -0.05 dB

Peak SAR (extrapolated) = 3.70 W/kg

SAR(1 g) = 0.786 W/kg; SAR(10 g) = 0.218 W/kg

Maximum value of SAR (measured) = 2.12 W/kg



0 dB = 2.12 W/kg = 3.26 dBW/kg

#28_WCDMA II_RMC 12.2Kbps_Back_10mm_Ch9538

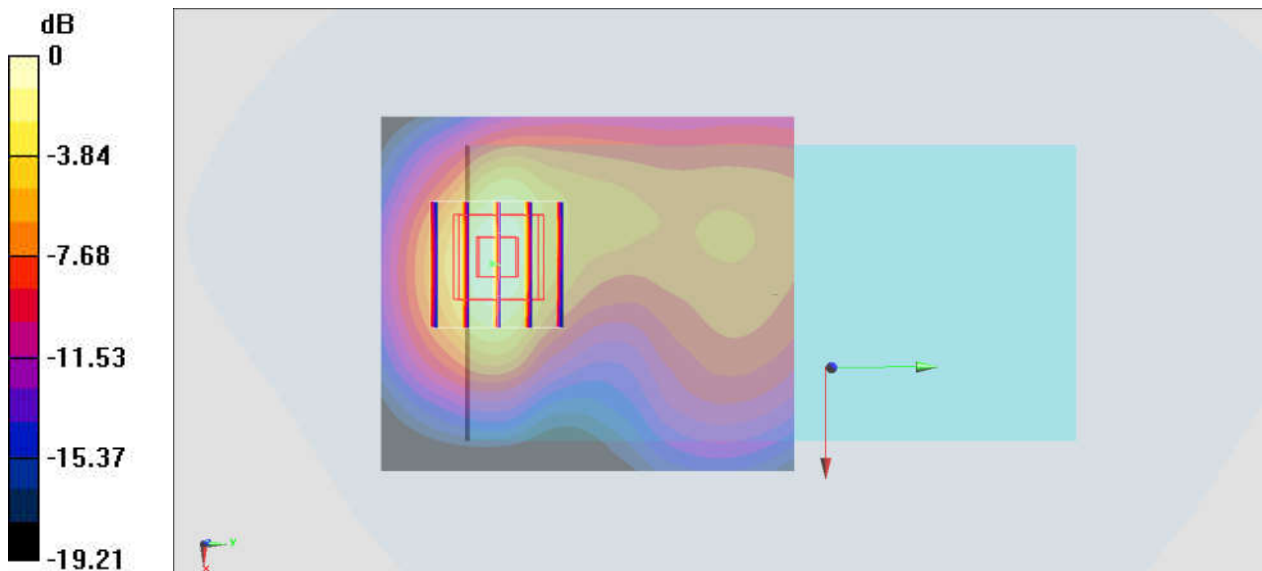
Communication System: WCDMA; Frequency: 1907.6 MHz; Duty Cycle: 1:1
Medium: MSL_1900_180725 Medium parameters used: $f = 1908 \text{ MHz}$; $\sigma = 1.568 \text{ S/m}$; $\epsilon_r = 53.365$;
 $\rho = 1000 \text{ kg/m}^3$
Ambient Temperature : $23.5 \text{ }^\circ\text{C}$; Liquid Temperature : $22.5 \text{ }^\circ\text{C}$

DASY5 Configuration:

- Probe: ES3DV3 - SN3270; ConvF(4.9, 4.9, 4.9); Calibrated: 2017/9/25
- Sensor-Surface: 3mm (Mechanical Surface Detection)
- Electronics: DAE4 Sn778; Calibrated: 2018/5/25
- Phantom: SAM-Right; Type: SAM; Serial: TP-1503
- Measurement SW: DASY52, Version 52.10 (1); SEMCAD X Version 14.6.11 (7439)

Area Scan (61x71x1): Interpolated grid: $dx=1.500 \text{ mm}$, $dy=1.500 \text{ mm}$
Maximum value of SAR (interpolated) = 1.83 W/kg

Zoom Scan (5x5x7)/Cube 0: Measurement grid: $dx=8\text{mm}$, $dy=8\text{mm}$, $dz=5\text{mm}$
Reference Value = 22.10 V/m ; Power Drift = -0.17 dB
Peak SAR (extrapolated) = 2.54 W/kg
SAR(1 g) = 1.42 W/kg ; SAR(10 g) = 0.752 W/kg
Maximum value of SAR (measured) = 1.77 W/kg



0 dB = $1.77 \text{ W/kg} = 2.48 \text{ dBW/kg}$

#29_WCDMA V_RMC 12.2Kbps_Back_10mm_Ch4182

Communication System: WCDMA ; Frequency: 836.4 MHz; Duty Cycle: 1:1

Medium: MSL_850_180719 Medium parameters used : $f = 836.4$ MHz; $\sigma = 0.967$ S/m; $\epsilon_r = 56.934$; $\rho = 1000$ kg/m³

Ambient Temperature : 23.7 °C ; Liquid Temperature : 22.7 °C

DASY5 Configuration:

- Probe: ES3DV3 - SN3169; ConvF(6.19, 6.19, 6.19); Calibrated: 2018/5/28
- Sensor-Surface: 3mm (Mechanical Surface Detection)
- Electronics: DAE3 Sn577; Calibrated: 2017/9/25
- Phantom: SAM_Right; Type: SAM; Serial: TP:1479
- Measurement SW: DASY52, Version 52.10 (1); SEMCAD X Version 14.6.11 (7439)

Area Scan (61x121x1): Interpolated grid: dx=1.500 mm, dy=1.500 mm

Maximum value of SAR (interpolated) = 0.542 W/kg

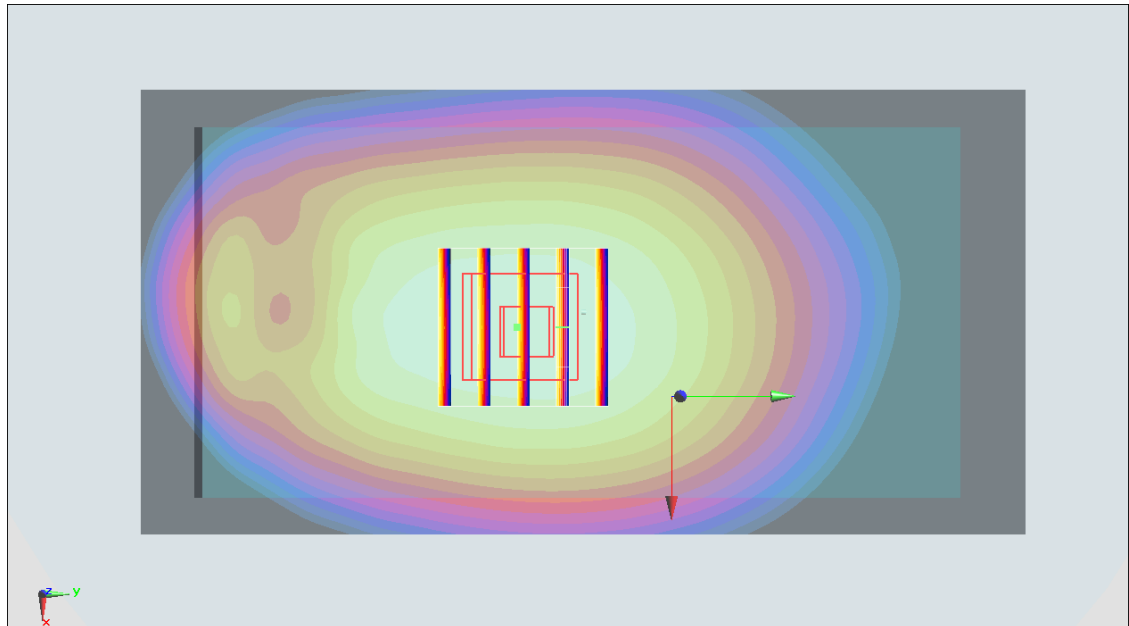
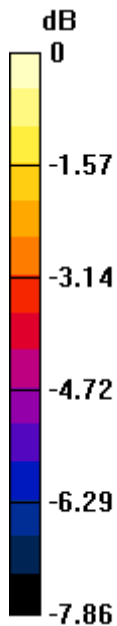
Zoom Scan (5x5x7)/Cube 0: Measurement grid: dx=8mm, dy=8mm, dz=5mm

Reference Value = 23.88 V/m; Power Drift = 0.02 dB

Peak SAR (extrapolated) = 0.628 W/kg

SAR(1 g) = 0.506 W/kg; SAR(10 g) = 0.392 W/kg

Maximum value of SAR (measured) = 0.551 W/kg



0 dB = 0.551 W/kg = -2.59 dBW/kg

#30_LTE Band 2_20M_QPSK_1_49_Back_10mm_Ch19100

Communication System: LTE; Frequency: 1900 MHz; Duty Cycle: 1:1

Medium: MSL_1900_180725 Medium parameters used: $f = 1900$ MHz; $\sigma = 1.56$ S/m; $\epsilon_r = 53.388$; $\rho = 1000$ kg/m³

Ambient Temperature : 23.5 °C ; Liquid Temperature : 22.5 °C

DASY5 Configuration:

- Probe: ES3DV3 - SN3270; ConvF(4.9, 4.9, 4.9); Calibrated: 2017/9/25
- Sensor-Surface: 3mm (Mechanical Surface Detection)
- Electronics: DAE4 Sn778; Calibrated: 2018/5/25
- Phantom: SAM-Right; Type: SAM; Serial: TP-1503
- Measurement SW: DASY52, Version 52.10 (1); SEMCAD X Version 14.6.11 (7439)

Area Scan (61x61x1): Interpolated grid: dx=1.500 mm, dy=1.500 mm

Maximum value of SAR (interpolated) = 1.73 W/kg

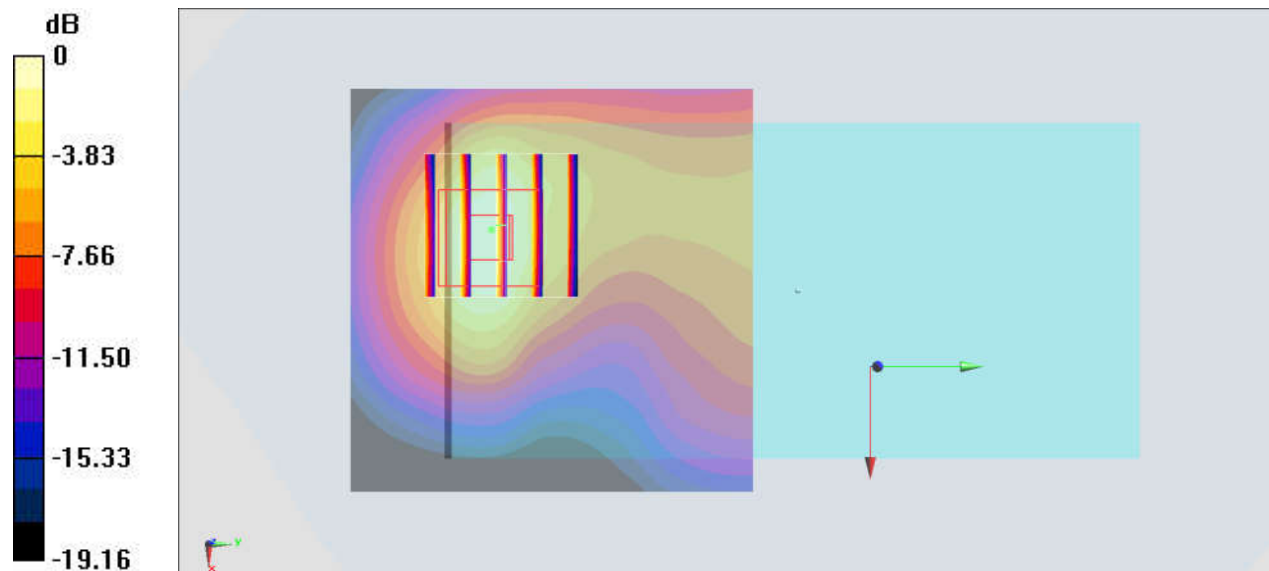
Zoom Scan (5x5x7)/Cube 0: Measurement grid: dx=8mm, dy=8mm, dz=5mm

Reference Value = 23.66 V/m; Power Drift = -0.10 dB

Peak SAR (extrapolated) = 2.43 W/kg

SAR(1 g) = 1.36 W/kg; SAR(10 g) = 0.722 W/kg

Maximum value of SAR (measured) = 1.67 W/kg



0 dB = 1.67 W/kg = 2.23 dBW/kg

#31_LTE Band 4_20M_QPSK_1_49_Back_10mm_Ch20175

Communication System: LTE; Frequency: 1732.5 MHz; Duty Cycle: 1:1

Medium: MSL_1750_180719 Medium parameters used: $f = 1733$ MHz; $\sigma = 1.473$ S/m; $\epsilon_r = 53.51$; $\rho = 1000$ kg/m³

Ambient Temperature : 23.7 °C ; Liquid Temperature : 22.7 °C

DASY5 Configuration:

- Probe: ES3DV3 - SN3169; ConvF(5.06, 5.06, 5.06); Calibrated: 2018/5/28
- Sensor-Surface: 3mm (Mechanical Surface Detection)
- Electronics: DAE3 Sn577; Calibrated: 2017/9/25
- Phantom: SAM_Left; Type: QD000P40CD; Serial: TP:1477
- Measurement SW: DASY52, Version 52.10 (1); SEMCAD X Version 14.6.11 (7439)

Area Scan (61x61x1): Interpolated grid: dx=1.500 mm, dy=1.500 mm

Maximum value of SAR (interpolated) = 1.06 W/kg

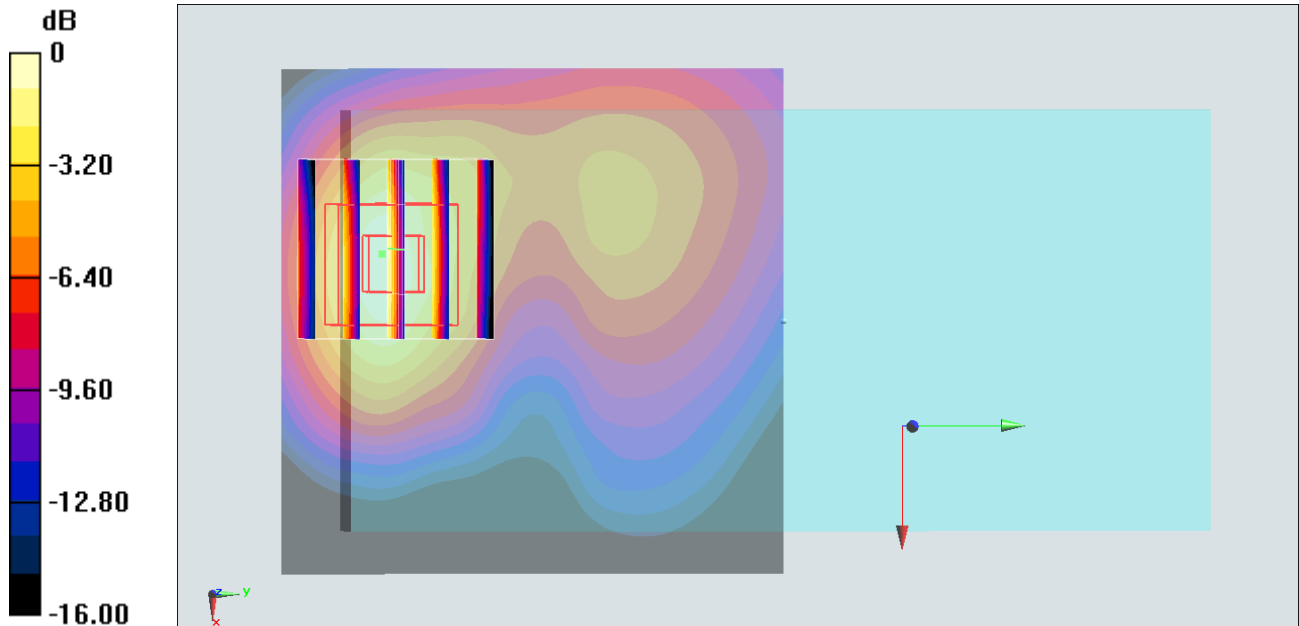
Zoom Scan (5x5x7)/Cube 0: Measurement grid: dx=8mm, dy=8mm, dz=5mm

Reference Value = 11.57 V/m; Power Drift = 0.13 dB

Peak SAR (extrapolated) = 1.55 W/kg

SAR(1 g) = 0.915 W/kg; SAR(10 g) = 0.492 W/kg

Maximum value of SAR (measured) = 1.10 W/kg



0 dB = 1.10 W/kg = 0.41 dBW/kg

#32_LTE Band 5_10M_QPSK_1_25_Back_10mm_Ch20525

Communication System: LTE; Frequency: 836.5 MHz; Duty Cycle: 1:1

Medium: MSL_850_180719 Medium parameters used : $f = 836.5$ MHz; $\sigma = 0.967$ S/m; $\epsilon_r = 56.934$; $\rho = 1000$ kg/m³

Ambient Temperature : 23.7 °C ; Liquid Temperature : 22.7 °C

DASY5 Configuration:

- Probe: ES3DV3 - SN3169; ConvF(6.19, 6.19, 6.19); Calibrated: 2018/5/28
- Sensor-Surface: 3mm (Mechanical Surface Detection)
- Electronics: DAE3 Sn577; Calibrated: 2017/9/25
- Phantom: SAM_Right; Type: SAM; Serial: TP:1479
- Measurement SW: DASY52, Version 52.10 (1); SEMCAD X Version 14.6.11 (7439)

Area Scan (61x101x1): Interpolated grid: dx=1.500 mm, dy=1.500 mm

Maximum value of SAR (interpolated) = 0.608 W/kg

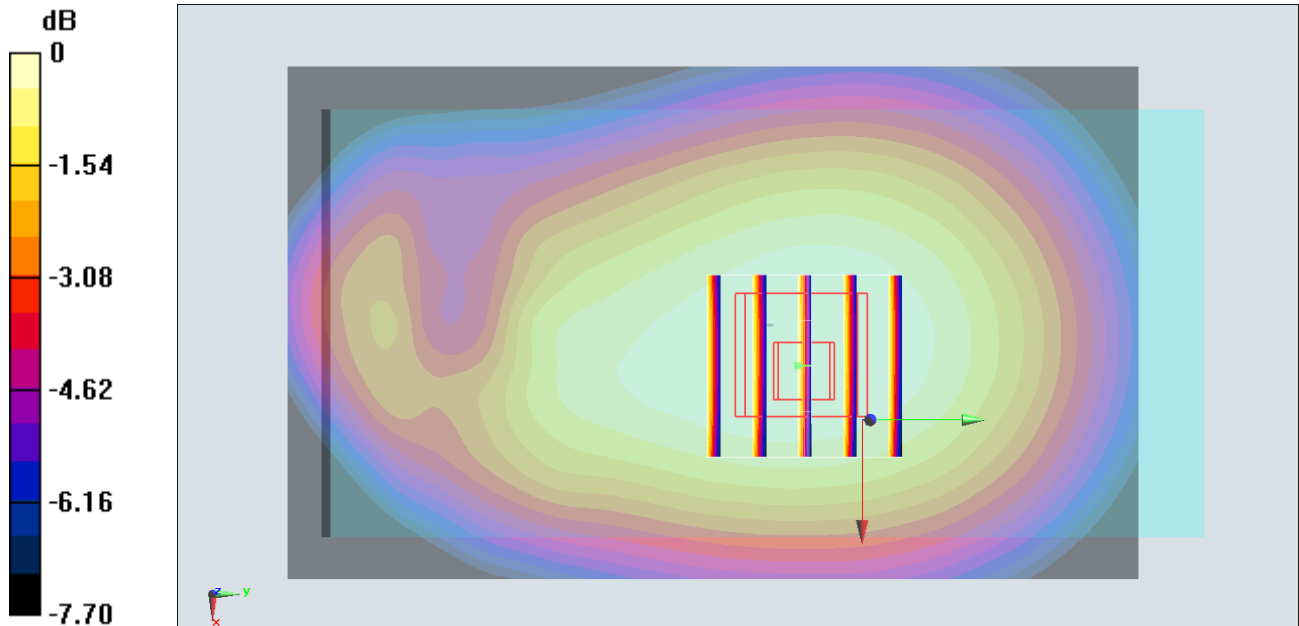
Zoom Scan (5x5x7)/Cube 0: Measurement grid: dx=8mm, dy=8mm, dz=5mm

Reference Value = 25.87 V/m; Power Drift = -0.12 dB

Peak SAR (extrapolated) = 0.668 W/kg

SAR(1 g) = 0.531 W/kg; SAR(10 g) = 0.409 W/kg

Maximum value of SAR (measured) = 0.581 W/kg



#33_LTE Band 12_10M_QPSK_1_25_Back_10mm_Ch23095

Communication System: LTE ; Frequency: 707.5 MHz; Duty Cycle: 1:1

Medium: MSL_750_180720 Medium parameters used: $f = 707.5$ MHz; $\sigma = 0.932$ S/m; $\epsilon_r = 54.955$; $\rho = 1000$ kg/m³

Ambient Temperature : 23.6 °C ; Liquid Temperature : 22.6 °C

DASY5 Configuration:

- Probe: ES3DV3 - SN3169; ConvF(6.3, 6.3, 6.3); Calibrated: 2018/5/28;
- Sensor-Surface: 3mm (Mechanical Surface Detection)
- Electronics: DAE3 Sn577; Calibrated: 2017/9/25
- Phantom: SAM_Right; Type: SAM; Serial: TP:1479
- Measurement SW: DASY52, Version 52.8 (8); SEMCAD X Version 14.6.10 (7373)

Area Scan (61x121x1): Interpolated grid: dx=1.500 mm, dy=1.500 mm

Maximum value of SAR (interpolated) = 0.465 W/kg

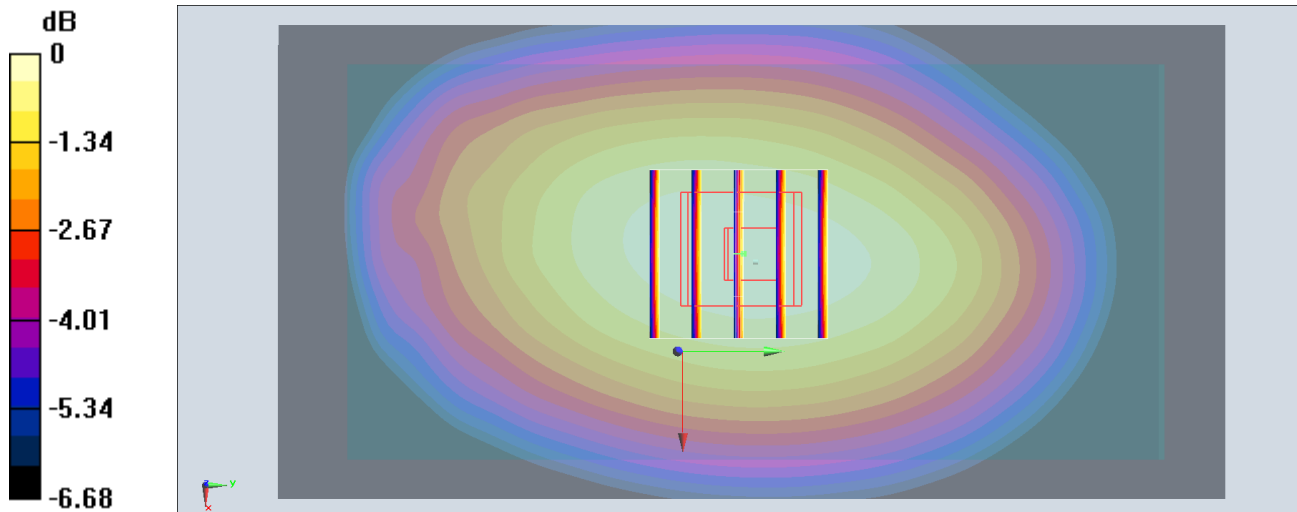
Zoom Scan (5x5x7)/Cube 0: Measurement grid: dx=8mm, dy=8mm, dz=5mm

Reference Value = 22.13 V/m; Power Drift = 0.05 dB

Peak SAR (extrapolated) = 0.525 W/kg

SAR(1 g) = 0.435 W/kg; SAR(10 g) = 0.344 W/kg

Maximum value of SAR (measured) = 0.471 W/kg



#34_LTE Band 13_10M_QPSK_1_25_Back_10mm_Ch23230

Communication System: LTE; Frequency: 782 MHz; Duty Cycle: 1:1

Medium: MSL_750_180720 Medium parameters used: $f = 782 \text{ MHz}$; $\sigma = 1.002 \text{ S/m}$; $\epsilon_r = 54.248$; $\rho = 1000 \text{ kg/m}^3$

Ambient Temperature : $23.6 \text{ }^\circ\text{C}$; Liquid Temperature : $22.6 \text{ }^\circ\text{C}$

DASY5 Configuration:

- Probe: ES3DV3 - SN3169; ConvF(6.3, 6.3, 6.3); Calibrated: 2018/5/28;
- Sensor-Surface: 3mm (Mechanical Surface Detection)
- Electronics: DAE3 Sn577; Calibrated: 2017/9/25
- Phantom: SAM_Right; Type: SAM; Serial: TP:1479
- Measurement SW: DASY52, Version 52.8 (8); SEMCAD X Version 14.6.10 (7373)

Area Scan (61x121x1): Interpolated grid: $dx=1.500 \text{ mm}$, $dy=1.500 \text{ mm}$

Maximum value of SAR (interpolated) = 0.643 W/kg

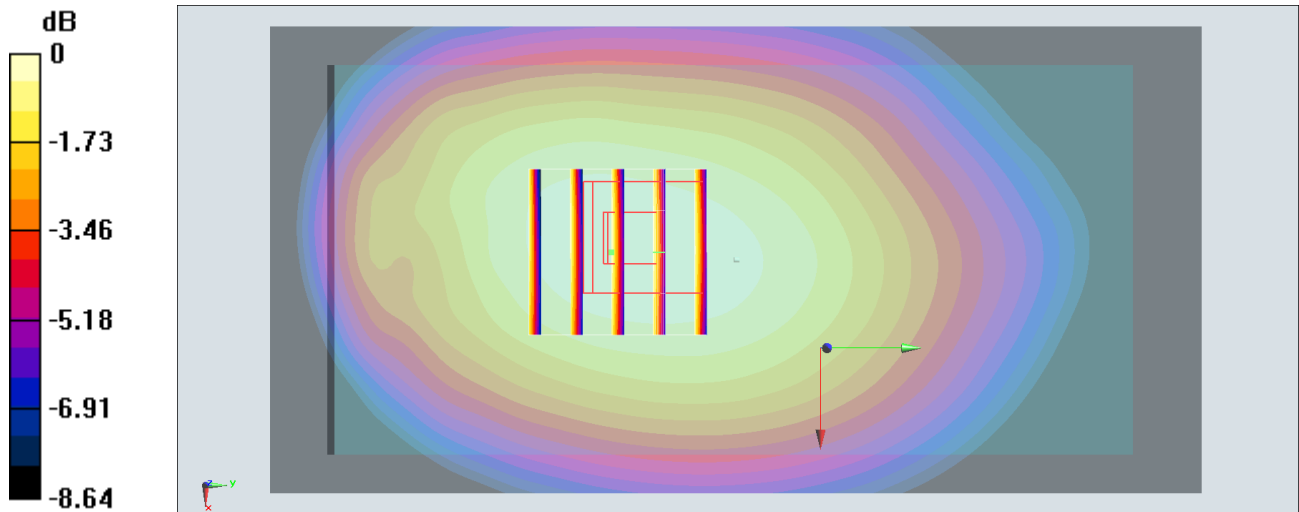
Zoom Scan (5x5x7)/Cube 0: Measurement grid: $dx=8\text{mm}$, $dy=8\text{mm}$, $dz=5\text{mm}$

Reference Value = 26.27 V/m ; Power Drift = -0.05 dB

Peak SAR (extrapolated) = 0.738 W/kg

SAR(1 g) = 0.593 W/kg ; SAR(10 g) = 0.455 W/kg

Maximum value of SAR (measured) = 0.643 W/kg



0 dB = $0.643 \text{ W/kg} = -1.92 \text{ dBW/kg}$

#35_WLAN2.4GHz_802.11b 1Mbps_Back_10mm_Ch6

Communication System: 802.11b ; Frequency: 2437 MHz; Duty Cycle: 1:1

Medium: MSL_2450_180723 Medium parameters used : $f = 2437$ MHz; $\sigma = 1.957$ S/m; $\epsilon_r = 51.266$; $\rho = 1000$ kg/m³

Ambient Temperature : 23.5 °C ; Liquid Temperature : 22.5 °C

DASY5 Configuration

- Probe: ES3DV3 - SN3169; ConvF(4.4, 4.4, 4.4); Calibrated: 2018/5/28
- Sensor-Surface: 3mm (Mechanical Surface Detection)
- Electronics: DAE3 Sn577; Calibrated: 2017/9/25
- Phantom: SAM_Right; Type: QD000P40CD; Serial: S/N:1796
- Measurement SW: DASY52, Version 52.10 (1); SEMCAD X Version 14.6.11 (7439)

Area Scan (81x81x1): Interpolated grid: dx=1.200 mm, dy=1.200 mm

Maximum value of SAR (interpolated) = 0.213 W/kg

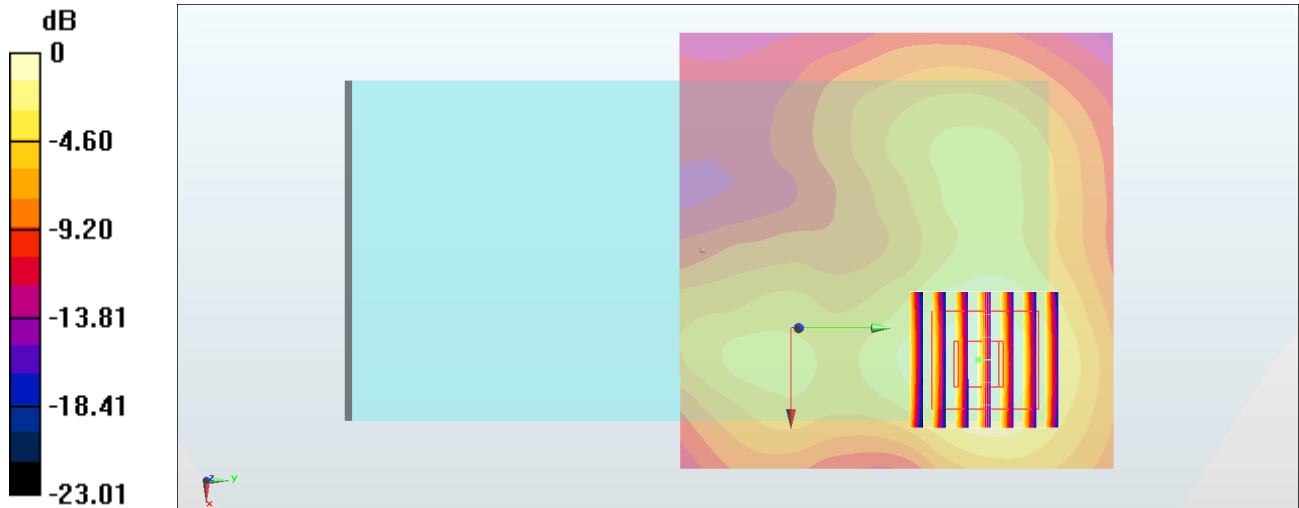
Zoom Scan (7x7x7)/Cube 0: Measurement grid: dx=5mm, dy=5mm, dz=5mm

Reference Value = 9.137 V/m; Power Drift = -0.02 dB

Peak SAR (extrapolated) = 0.315 W/kg

SAR(1 g) = 0.170 W/kg; SAR(10 g) = 0.092 W/kg

Maximum value of SAR (measured) = 0.217 W/kg



0 dB = 0.217 W/kg = -6.64 dBW/kg

#36_WLAN5GHz_802.11a_6Mbps_Back_10mm_Ch56

Communication System: 802.11a; Frequency: 5280 MHz; Duty Cycle: 1:1.154

Medium: MSL_5G_180723 Medium parameters used: $f = 5280$ MHz; $\sigma = 5.588$ S/m; $\epsilon_r = 47.719$; $\rho = 1000$ kg/m³

Ambient Temperature : 23.5 °C ; Liquid Temperature : 22.5 °C

DASY5 Configuration:

- Probe: EX3DV4 - SN3931; ConvF(4.7, 4.7, 4.7); Calibrated: 2017/9/29
- Sensor-Surface: 1.4mm (Mechanical Surface Detection)
- Electronics: DAE4 Sn1399; Calibrated: 2017/11/16
- Phantom: SAM_Left; Type: QD000P40CD; Serial: TP:1477
- Measurement SW: DASY52, Version 52.10 (1); SEMCAD X Version 14.6.11 (7439)

Area Scan (121x101x1): Interpolated grid: $dx=1.000$ mm, $dy=1.000$ mm

Maximum value of SAR (interpolated) = 1.26 W/kg

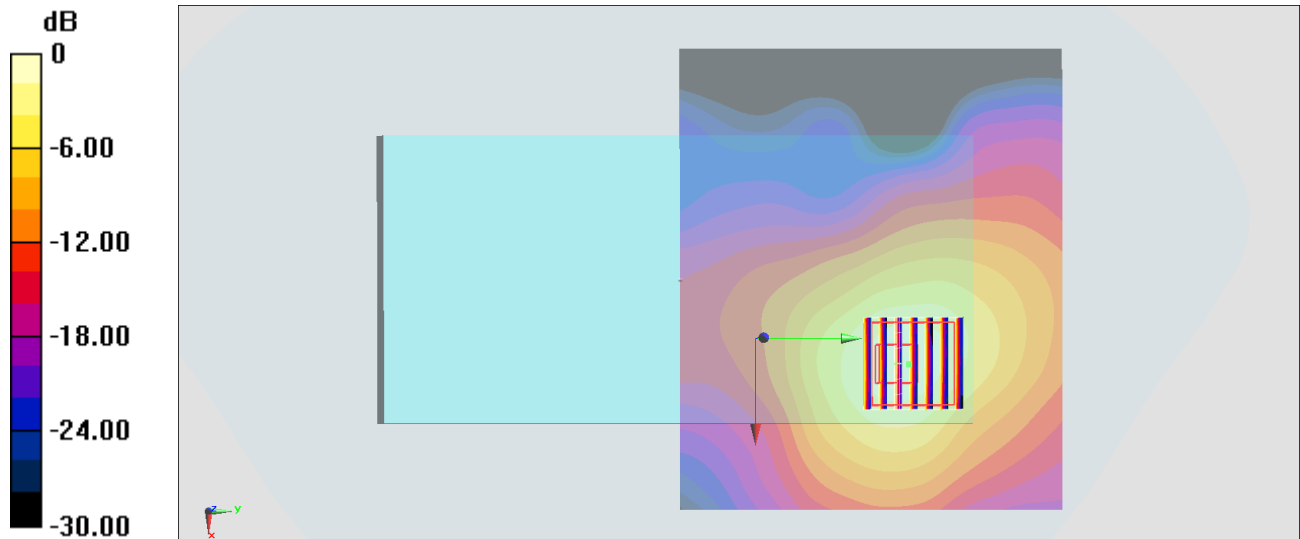
Zoom Scan (7x7x7)/Cube 0: Measurement grid: $dx=4$ mm, $dy=4$ mm, $dz=1.4$ mm

Reference Value = 17.31 V/m; Power Drift = -0.01 dB

Peak SAR (extrapolated) = 2.27 W/kg

SAR(1 g) = 0.609 W/kg; SAR(10 g) = 0.242 W/kg

Maximum value of SAR (measured) = 1.35 W/kg



#37_WLAN5GHz_802.11a_6Mbps_Back_10mm_Ch132

Communication System: 802.11a ; Frequency: 5660 MHz;Duty Cycle: 1:1.154

Medium: MSL_5G_180723 Medium parameters used: $f = 5660$ MHz; $\sigma = 6.078$ S/m; $\epsilon_r = 47.008$; $\rho = 1000$ kg/m³

Ambient Temperature : 23.5 °C ; Liquid Temperature : 22.5 °C

DASY5 Configuration:

- Probe: EX3DV4 - SN3931; ConvF(3.99, 3.99, 3.99); Calibrated: 2017/9/29
- Sensor-Surface: 1.4mm (Mechanical Surface Detection)
- Electronics: DAE4 Sn1399; Calibrated: 2017/11/16
- Phantom: SAM_Left; Type: QD000P40CD; Serial: TP:1477
- Measurement SW: DASY52, Version 52.10 (1);SEMCAD X Version 14.6.11 (7439)

Area Scan (121x101x1): Interpolated grid: dx=1.000 mm, dy=1.000 mm

Maximum value of SAR (interpolated) = 0.575 W/kg

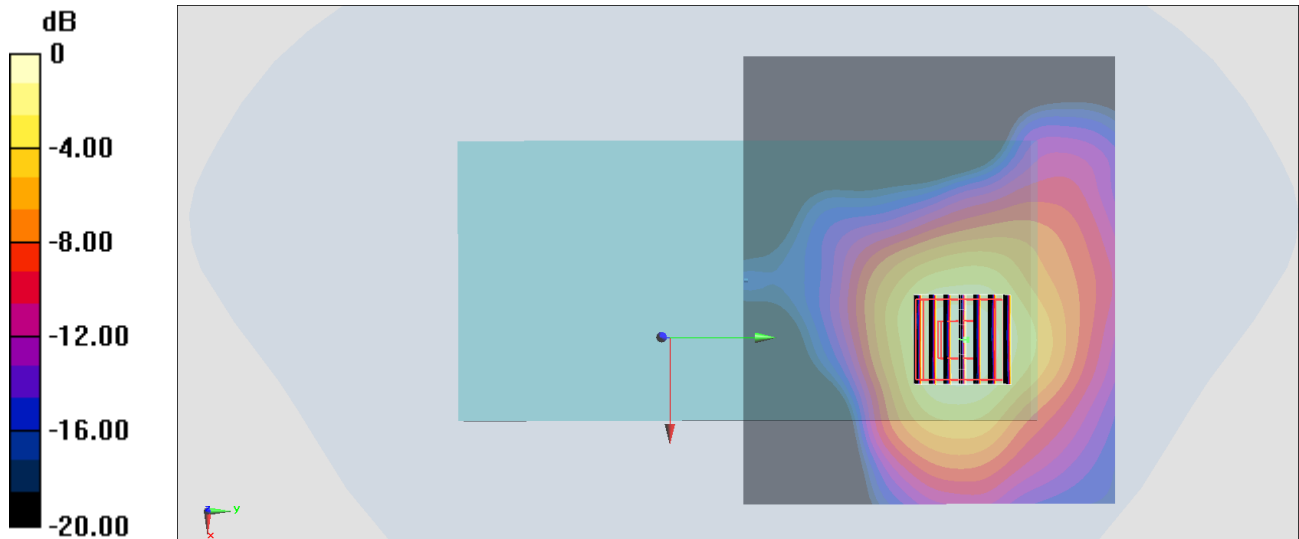
Zoom Scan (7x7x7)/Cube 0: Measurement grid: dx=4mm, dy=4mm, dz=1.4mm

Reference Value = 10.91 V/m; Power Drift = 0.10 dB

Peak SAR (extrapolated) = 1.09 W/kg

SAR(1 g) = 0.265 W/kg; SAR(10 g) = 0.108 W/kg

Maximum value of SAR (measured) = 0.599 W/kg



0 dB = 0.599 W/kg = -2.23 dBW/kg

#38_WLAN5GHz_802.11a_6Mbps_Back_10mm_Ch149

Communication System: 802.11a ; Frequency: 5745 MHz;Duty Cycle: 1:1.154

Medium: MSL_5G_180723 Medium parameters used : $f = 5745$ MHz; $\sigma = 6.186$ S/m; $\epsilon_r = 46.851$; $\rho = 1000$ kg/m³

Ambient Temperature : 23.5 °C ; Liquid Temperature : 22.5 °C

DASY5 Configuration:

- Probe: EX3DV4 - SN3931; ConvF(4.32, 4.32, 4.32); Calibrated: 2017/9/29
- Sensor-Surface: 1.4mm (Mechanical Surface Detection)
- Electronics: DAE4 Sn1399; Calibrated: 2017/11/16
- Phantom: SAM_Left; Type: QD000P40CD; Serial: TP:1477
- Measurement SW: DASY52, Version 52.10 (1);SEMCAD X Version 14.6.11 (7439)

Area Scan (121x101x1): Interpolated grid: dx=1.000 mm, dy=1.000 mm

Maximum value of SAR (interpolated) = 0.296 W/kg

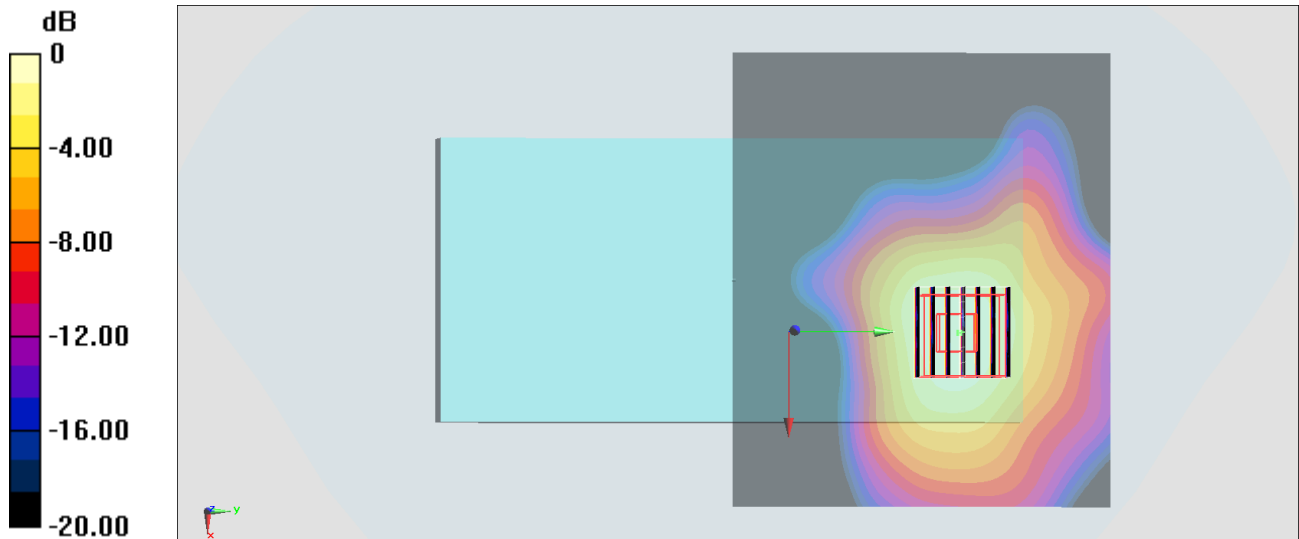
Zoom Scan (7x7x7)/Cube 0: Measurement grid: dx=4mm, dy=4mm, dz=1.4mm

Reference Value = 7.742 V/m; Power Drift = -0.04 dB

Peak SAR (extrapolated) = 0.551 W/kg

SAR(1 g) = 0.133 W/kg; SAR(10 g) = 0.055 W/kg

Maximum value of SAR (measured) = 0.298 W/kg



0 dB = 0.298 W/kg = -5.26 dBW/kg

#39_Bluetooth_1Mbps_Back_10mm_Ch39

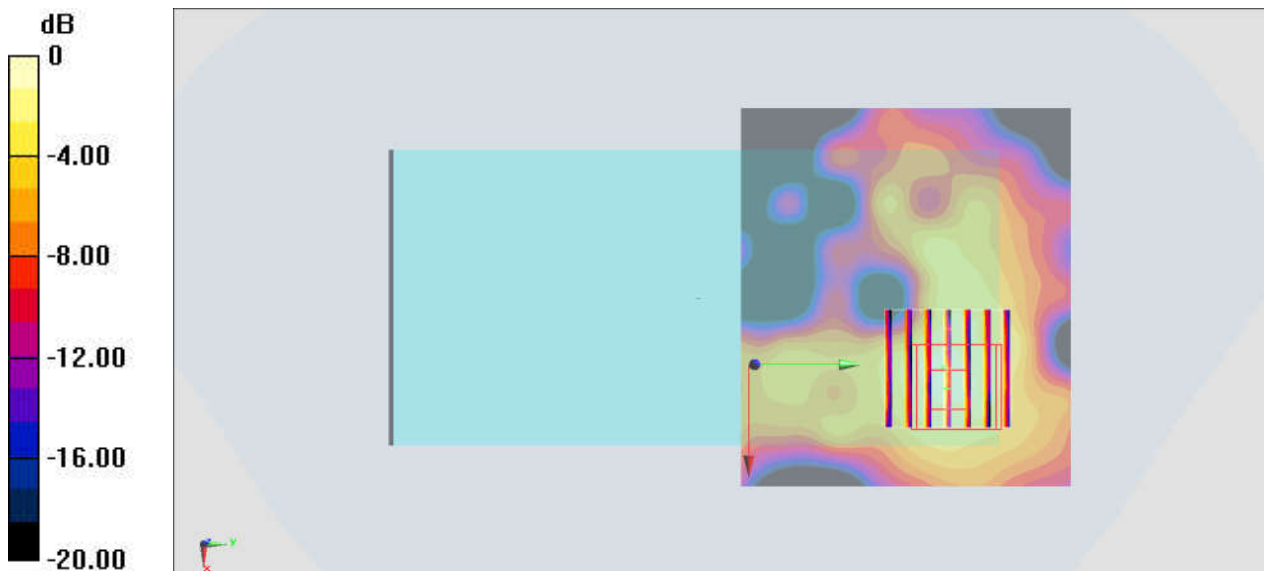
Communication System: Bluetooth ; Frequency: 2441 MHz;Duty Cycle: 1:1.303
Medium: MSL_2450_180726 Medium parameters used : $f = 2441$ MHz; $\sigma = 1.984$ S/m; $\epsilon_r = 53.48$;
 $\rho = 1000$ kg/m³
Ambient Temperature : 23.4 °C ; Liquid Temperature : 22.4 °C

DASY5 Configuration:

- Probe: ES3DV3 - SN3270; ConvF(4.39, 4.39, 4.39); Calibrated: 2017/9/25
- Sensor-Surface: 3mm (Mechanical Surface Detection)
- Electronics: DAE4 Sn778; Calibrated: 2018/5/25
- Phantom: SAM_Left; Type: QD000P40CD; Serial: TP:1431
- Measurement SW: DASY52, Version 52.10 (1);SEMCAD X Version 14.6.11 (7439)

Area Scan (81x71x1): Interpolated grid: dx=1.200 mm, dy=1.200 mm
Maximum value of SAR (interpolated) = 0.0146 W/kg

Zoom Scan (7x7x7)/Cube 0: Measurement grid: dx=5mm, dy=5mm, dz=5mm
Reference Value = 2.739 V/m; Power Drift = 0.09 dB
Peak SAR (extrapolated) = 0.0250 W/kg
SAR(1 g) = 0.013 W/kg; SAR(10 g) = 0.00712 W/kg
Maximum value of SAR (measured) = 0.0175 W/kg



0 dB = 0.0175 W/kg = -17.57 dBW/kg