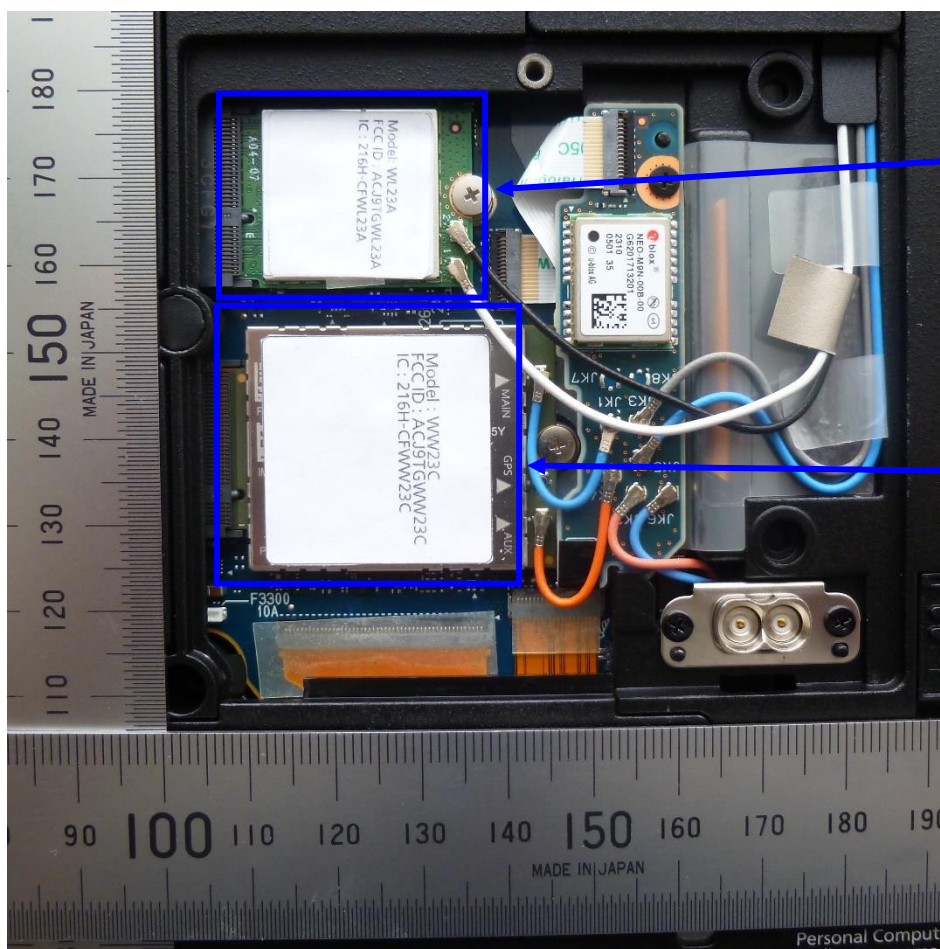
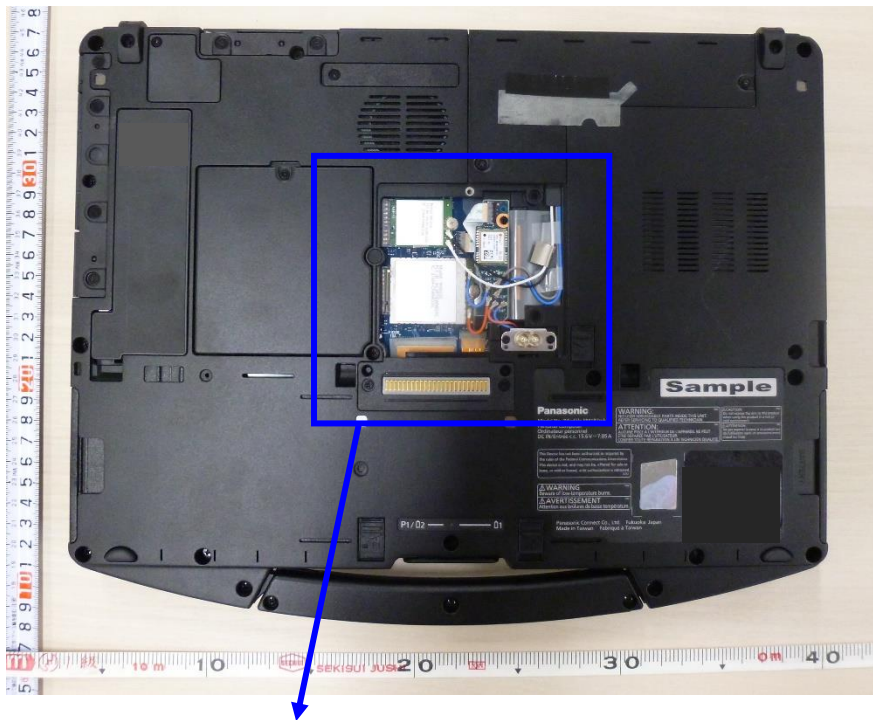


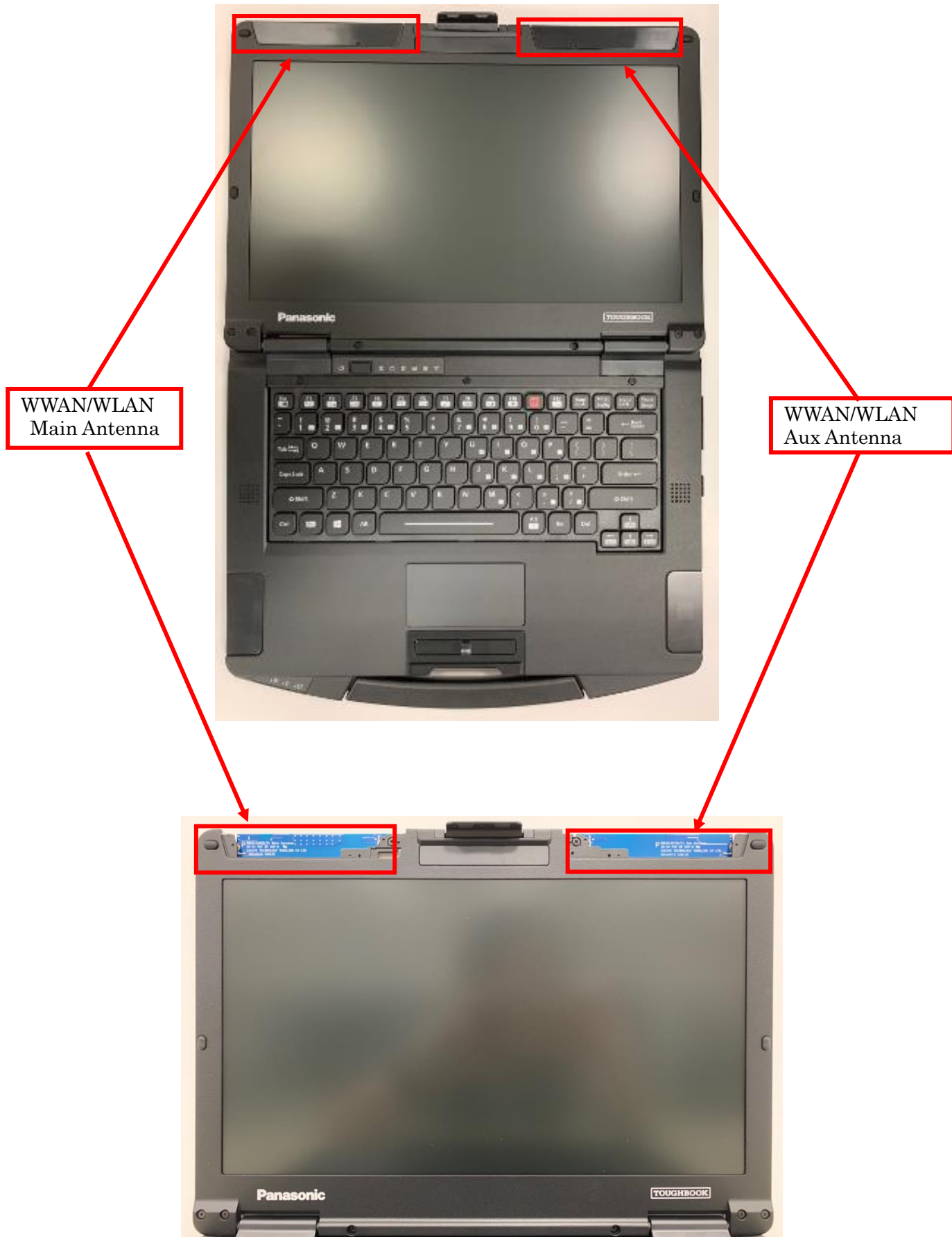
1) Locations of WLAN and WWAN Modules



WLAN/Bluetooth module
FCC ID: ACJ9TGWL23A
IC: 216H-CFWL23A

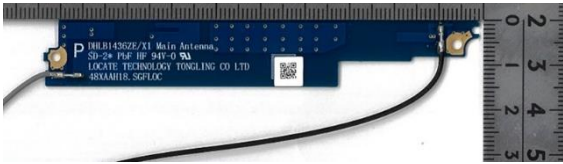

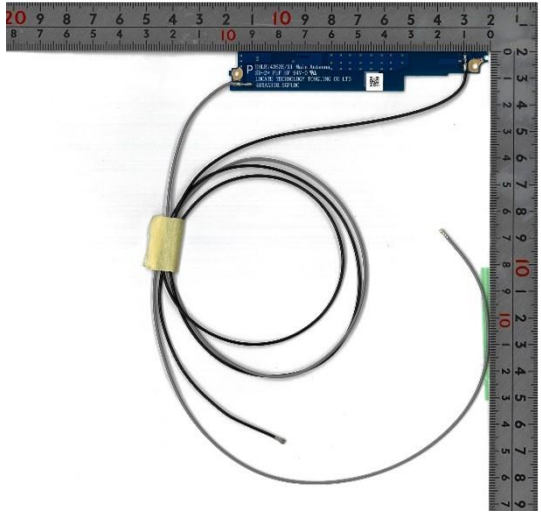
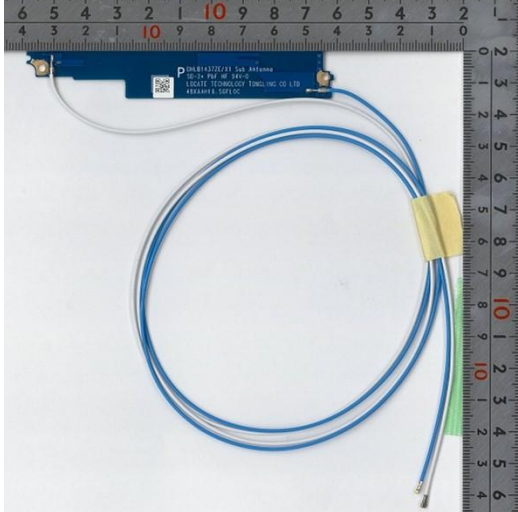


WWAN module
FCC ID: ACJ9TGWW23C
IC: 216H-CFWW23C

2) Antenna Locations

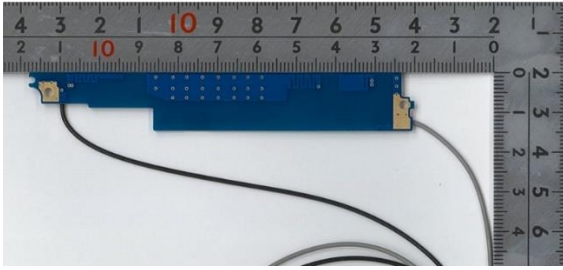


3) Photos of Antennas

Close-up photos of the WWAN/WLAN Main and Aux Antennas

WWAN/WLAN Main Antenna	WWAN/WLAN Aux Antenna
<p><Front view></p>  <p>A close-up photograph of the WWAN/WLAN Main Antenna. The antenna is a blue printed circuit board (PCB) with a QR code and text: "P 09B145502/AT Main Antenna", "03-24 P/N: RF-941-03A", "LOCATE TECHNOLOGY TONGLING CO LTD", and "85X44H8.50FL0C". A black cable is attached to the right side. A ruler is visible on the right side for scale.</p>	<p><Front View></p>  <p>A close-up photograph of the WWAN/WLAN Aux Antenna. The antenna is a blue PCB with a QR code and text: "P 09B143702/AT Sub Antenna", "03-24 P/N: RF-941-03A", "LOCATE TECHNOLOGY TONGLING CO LTD", and "85X44H8.50FL0C". A blue cable is attached to the right side. A ruler is visible on the right side for scale.</p>
 <p>A photograph showing the WWAN/WLAN Main Antenna with its black cable. The cable is coiled and has a yellow tape wrapped around it. A ruler is visible on the right side for scale.</p>	 <p>A photograph showing the WWAN/WLAN Aux Antenna with its blue cable. The cable is coiled and has a yellow tape wrapped around it. A ruler is visible on the right side for scale.</p>
<p><Top View></p>  <p>A top-down photograph of the WWAN/WLAN Main Antenna, showing the blue PCB and the black cable. The antenna is mounted on a metal surface.</p>	<p><Top View></p>  <p>A top-down photograph of the WWAN/WLAN Aux Antenna, showing the blue PCB and the blue cable. The antenna is mounted on a metal surface.</p>

<Backside View>



<Backside View>

