

## Appendix C System Check (PD)

- C.1 System check result
- C.2 20210517\_SAR2\_30000 MHz System Check

### Measurement Report for Device, FRONT, Validation band, UID 0 -, Channel 30000 (30000.0MHz)

#### Device under Test Properties

Name, Manufacturer	Dimensions [mm]	IMEI	DUT Type
, Device	100.0 x 100.0 x 100.0		Phone

#### Exposure Conditions

Phantom Section	Position, Test Distance [mm]	Band	Group, UID	Frequency [MHz], Channel Number	Conversion Factor
5G Air	FRONT, 5.55	Validation band	CW, 0--	30000.0, 30000	1.0

#### Hardware Setup

Phantom	Medium	Probe, Calibration Date	DAE, Calibration Date
mmWave- 1038	--Air-	EUmmWV4 - SN9450_F1-78GHz, 2020-10-21	DAE4 Sn509, 2020-07-08

#### Scan Setup

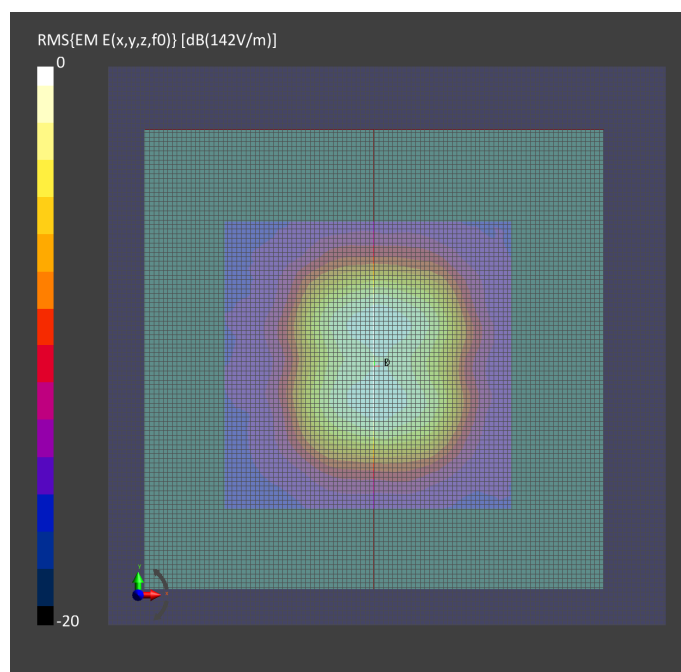
	5G Scan
Grid Extents [mm]	60.0 x 60.0
Grid Steps [lambda]	0.25 x 0.25
Sensor Surface [mm]	5.55
MAIA	N/A

#### Measurement Results

	5G Scan
Date	2021-05-17, 08:45
Avg. Area [cm <sup>2</sup> ]	4.00
pS <sub>tot</sub> avg [W/m <sup>2</sup> ]	38.4
pS <sub>n</sub> avg [W/m <sup>2</sup> ]	38.0
E <sub>peak</sub> [V/m]	142
Power Drift [dB]	0.05

#### Warning(s) / Error(s)

Details	5G Scan
Warning(s)	
Error(s)	



C.3 20210518\_SAR2\_30000 MHz System Check

**Measurement Report for Device, FRONT, Validation band, UID 0 -, Channel 30000 (30000.0MHz)**

**Device under Test Properties**

Name, Manufacturer	Dimensions [mm]	IMEI	DUT Type
, Device	100.0 x 100.0 x 100.0		Phone

**Exposure Conditions**

Phantom Section	Position, Test Distance [mm]	Band	Group, UID	Frequency [MHz], Channel Number	Conversion Factor
5G Air	FRONT, 5.55	Validation band	CW, 0--	30000.0, 30000	1.0

**Hardware Setup**

Phantom	Medium	Probe, Calibration Date	DAE, Calibration Date
mmWave- 1038	--Air-	EUmmWV4 - SN9450_F1-78GHz, 2020-10-21	DAE4 Sn509, 2020-07-08

**Scan Setup**

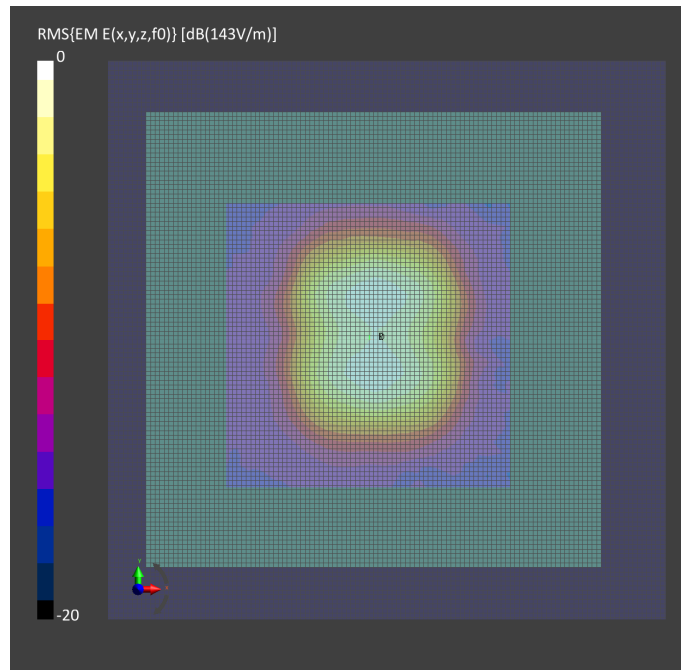
	5G Scan
Grid Extents [mm]	60.0 x 60.0
Grid Steps [lambda]	0.25 x 0.25
Sensor Surface [mm]	5.55
MAIA	N/A

**Measurement Results**

	5G Scan
Date	2021-05-18, 08:24
Avg. Area [cm <sup>2</sup> ]	4.00
pS <sub>tot</sub> avg [W/m <sup>2</sup> ]	39.1
pS <sub>n</sub> avg [W/m <sup>2</sup> ]	38.7
E <sub>peak</sub> [V/m]	143
Power Drift [dB]	-0.02

**Warning(s) / Error(s)**

Details	5G Scan
Warning(s)	
Error(s)	



C.4 20210519\_SAR2\_30000 MHz System Check

**Measurement Report for Device, FRONT, Validation band, UID 0 -, Channel 30000 (30000.0MHz)**

**Device under Test Properties**

Name, Manufacturer	Dimensions [mm]	IMEI	DUT Type
, Device	100.0 x 100.0 x 100.0		Phone

**Exposure Conditions**

Phantom Section	Position, Test Distance [mm]	Band	Group, UID	Frequency [MHz], Channel Number	Conversion Factor
5G Air	FRONT, 5.55	Validation band	CW, 0--	30000.0, 30000	1.0

**Hardware Setup**

Phantom	Medium	Probe, Calibration Date	DAE, Calibration Date
mmWave- 1038	--Air-	EUmmWV4 - SN9450_F1-78GHz, 2020-10-21	DAE4 Sn509, 2020-07-08

**Scan Setup**

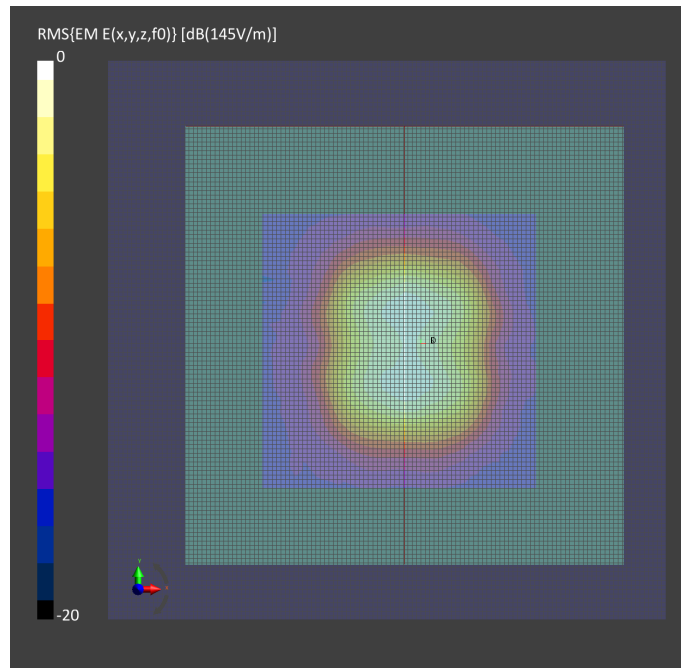
	5G Scan
Grid Extents [mm]	60.0 x 60.0
Grid Steps [lambda]	0.25 x 0.25
Sensor Surface [mm]	5.55
MAIA	N/A

**Measurement Results**

	5G Scan
Date	2021-05-19, 08:33
Avg. Area [cm <sup>2</sup> ]	4.00
pS <sub>tot</sub> avg [W/m <sup>2</sup> ]	39.0
pS <sub>n</sub> avg [W/m <sup>2</sup> ]	38.6
E <sub>peak</sub> [V/m]	145
Power Drift [dB]	0.04

**Warning(s) / Error(s)**

Details	5G Scan
Warning(s)	
Error(s)	



C.5 20210526\_SAR2\_30000 MHz System Check

**Measurement Report for Device, FRONT, Validation band, UID 0 -, Channel 30000 (30000.0MHz)**

**Device under Test Properties**

Name, Manufacturer	Dimensions [mm]	IMEI	DUT Type
, Device	100.0 x 100.0 x 100.0		Phone

**Exposure Conditions**

Phantom Section	Position, Test Distance [mm]	Band	Group, UID	Frequency [MHz], Channel Number	Conversion Factor
5G Air	FRONT, 5.55	Validation band	CW, 0--	30000.0, 30000	1.0

**Hardware Setup**

Phantom	Medium	Probe, Calibration Date	DAE, Calibration Date
mmWave- 1038	--Air-	EUmmWV4 - SN9450_F1-78GHz, 2020-10-21	DAE4 Sn509, 2020-07-08

**Scan Setup**

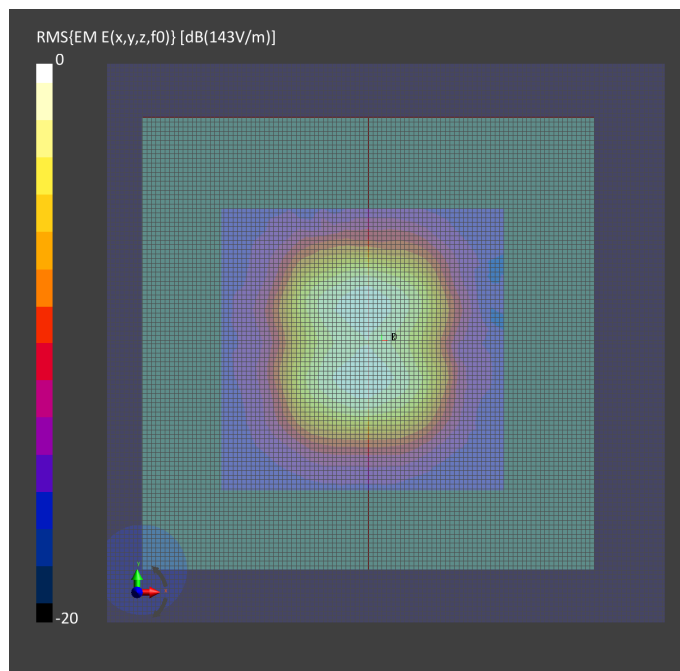
	5G Scan
Grid Extents [mm]	60.0 x 60.0
Grid Steps [lambda]	0.25 x 0.25
Sensor Surface [mm]	5.55
MAIA	N/A

**Measurement Results**

	5G Scan
Date	2021-05-26, 08:36
Avg. Area [cm <sup>2</sup> ]	4.00
pS <sub>tot</sub> avg [W/m <sup>2</sup> ]	38.2
pS <sub>n</sub> avg [W/m <sup>2</sup> ]	37.7
E <sub>peak</sub> [V/m]	143
Power Drift [dB]	-0.02

**Warning(s) / Error(s)**

Details	5G Scan
Warning(s)	
Error(s)	



C.6 20210528\_SAR2\_30000 MHz System Check

**Measurement Report for Device, FRONT, Validation band, UID 0 -, Channel 30000 (30000.0MHz)**

**Device under Test Properties**

Name, Manufacturer	Dimensions [mm]	IMEI	DUT Type
, Device	100.0 x 100.0 x 100.0		Phone

**Exposure Conditions**

Phantom Section	Position, Test Distance [mm]	Band	Group, UID	Frequency [MHz], Channel Number	Conversion Factor
5G Air	FRONT, 5.55	Validation band	CW, 0--	30000.0, 30000	1.0

**Hardware Setup**

Phantom	Medium	Probe, Calibration Date	DAE, Calibration Date
mmWave- 1038	--Air-	EUmmWV4 - SN9450_F1-78GHz, 2020-10-21	DAE4 Sn509, 2020-07-08

**Scan Setup**

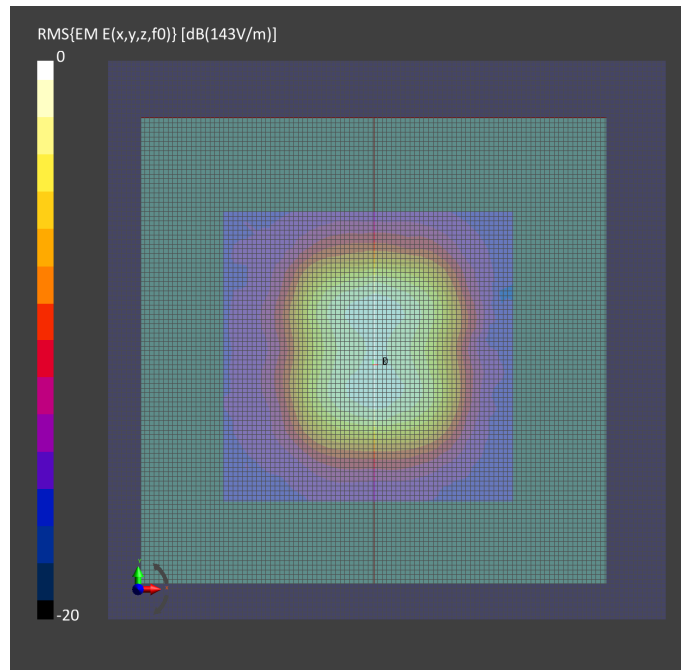
	5G Scan
Grid Extents [mm]	60.0 x 60.0
Grid Steps [lambda]	0.25 x 0.25
Sensor Surface [mm]	5.55
MAIA	N/A

**Measurement Results**

	5G Scan
Date	2021-05-28, 09:08
Avg. Area [cm <sup>2</sup> ]	4.00
pS <sub>tot</sub> avg [W/m <sup>2</sup> ]	39.1
pS <sub>n</sub> avg [W/m <sup>2</sup> ]	38.7
E <sub>peak</sub> [V/m]	143
Power Drift [dB]	-0.01

**Warning(s) / Error(s)**

Details	5G Scan
Warning(s)	
Error(s)	



C.7 20210611\_SAR2\_30000 MHz System Check

**Measurement Report for Device, FRONT, Validation band, UID 0 -, Channel 30000 (30000.0MHz)**

**Device under Test Properties**

Name, Manufacturer	Dimensions [mm]	IMEI	DUT Type
, Device	100.0 x 100.0 x 100.0		Phone

**Exposure Conditions**

Phantom Section	Position, Test Distance [mm]	Band	Group, UID	Frequency [MHz], Channel Number	Conversion Factor
5G Air	FRONT, 5.55	Validation band	CW, 0--	30000.0, 30000	1.0

**Hardware Setup**

Phantom	Medium	Probe, Calibration Date	DAE, Calibration Date
mmWave- 1038	--Air-	EUmmWV4 - SN9450_F1-78GHz, 2020-10-21	DAE4 Sn509, 2020-07-08

**Scan Setup**

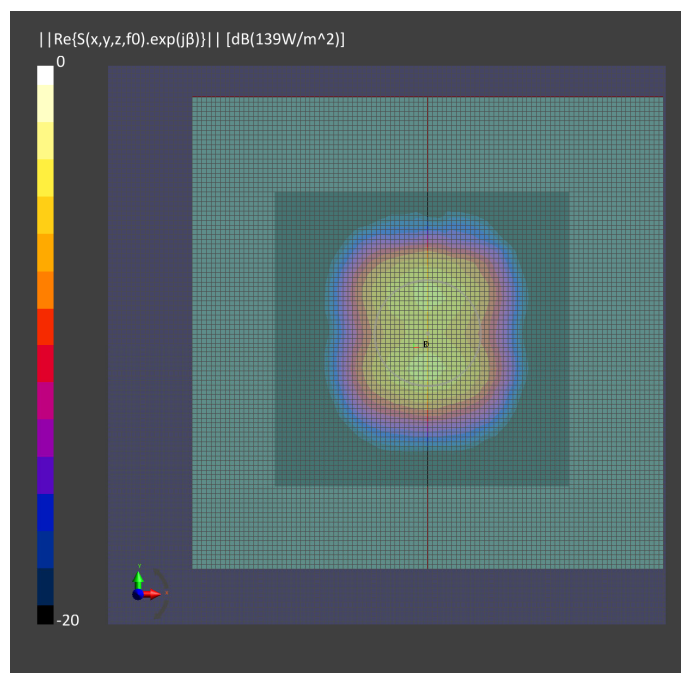
	5G Scan
Grid Extents [mm]	60.0 x 60.0
Grid Steps [lambda]	0.25 x 0.25
Sensor Surface [mm]	5.55
MAIA	N/A

**Measurement Results**

	5G Scan
Date	2021-06-11, 09:30
Avg. Area [cm <sup>2</sup> ]	4.00
pS <sub>tot</sub> avg [W/m <sup>2</sup> ]	36.6
pS <sub>n</sub> avg [W/m <sup>2</sup> ]	36.2
E <sub>peak</sub> [V/m]	139
Power Drift [dB]	-0.03

**Warning(s) / Error(s)**

Details	5G Scan
Warning(s)	
Error(s)	



C.8 20210708\_SAR2\_30000 MHz System Check

**Measurement Report for Device, FRONT, Validation band, UID 0 -, Channel 30000 (30000.0MHz)**

**Device under Test Properties**

Name, Manufacturer	Dimensions [mm]	IMEI	DUT Type
, Device	100.0 x 100.0 x 100.0		Phone

**Exposure Conditions**

Phantom Section	Position, Test Distance [mm]	Band	Group, UID	Frequency [MHz], Channel Number	Conversion Factor
5G Air	FRONT, 5.55	Validation band	CW, 0--	30000.0, 30000	1.0

**Hardware Setup**

Phantom	Medium	Probe, Calibration Date	DAE, Calibration Date
mmWave- 1038	--Air-	EUmmWV4 - SN9450_F1-78GHz, 2020-10-21	DAE4 Sn1372, 2020-08-12

**Scan Setup**

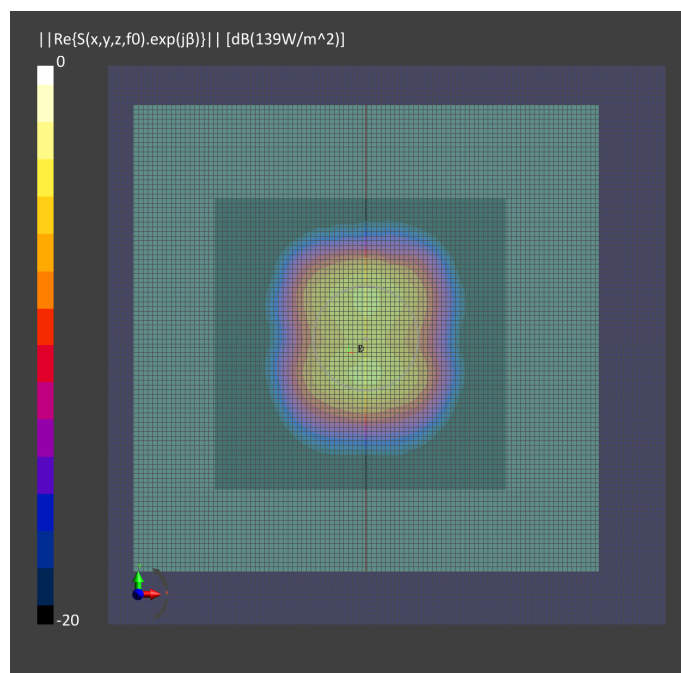
	5G Scan
Grid Extents [mm]	60.0 x 60.0
Grid Steps [lambda]	0.25 x 0.25
Sensor Surface [mm]	5.55
MAIA	N/A

**Measurement Results**

	5G Scan
Date	2021-07-08, 09:33
Avg. Area [cm <sup>2</sup> ]	4.00
pS <sub>tot</sub> avg [W/m <sup>2</sup> ]	36.4
pS <sub>n</sub> avg [W/m <sup>2</sup> ]	36.0
E <sub>peak</sub> [V/m]	139
Power Drift [dB]	0.08

**Warning(s) / Error(s)**

Details	5G Scan
Warning(s)	
Error(s)	



C.9 20210709\_SAR2\_30000 MHz System Check

**Measurement Report for Device, FRONT, Validation band, UID 0 -, Channel 30000 (30000.0MHz)**

**Device under Test Properties**

Name, Manufacturer	Dimensions [mm]	IMEI	DUT Type
, Device	100.0 x 100.0 x 100.0		Phone

**Exposure Conditions**

Phantom Section	Position, Test Distance [mm]	Band	Group, UID	Frequency [MHz], Channel Number	Conversion Factor
5G Air	FRONT, 5.55	Validation band	CW, 0--	30000.0, 30000	1.0

**Hardware Setup**

Phantom	Medium	Probe, Calibration Date	DAE, Calibration Date
mmWave- 1038	--Air-	EUmmWV4 - SN9450_F1-78GHz, 2020-10-21	DAE4 Sn1372, 2020-08-12

**Scan Setup**

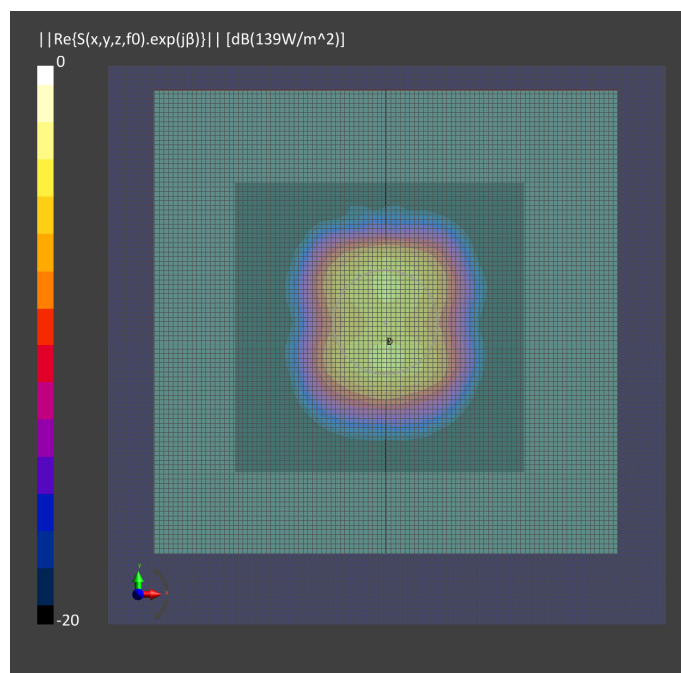
	5G Scan
Grid Extents [mm]	60.0 x 60.0
Grid Steps [lambda]	0.25 x 0.25
Sensor Surface [mm]	5.55
MAIA	N/A

**Measurement Results**

	5G Scan
Date	2021-07-09, 08:57
Avg. Area [cm <sup>2</sup> ]	4.00
pS <sub>tot</sub> avg [W/m <sup>2</sup> ]	36.6
pS <sub>n</sub> avg [W/m <sup>2</sup> ]	36.2
E <sub>peak</sub> [V/m]	139
Power Drift [dB]	0.02

**Warning(s) / Error(s)**

Details	5G Scan
Warning(s)	
Error(s)	





C.10 20210713\_SAR2\_30000 MHz System Check

**Measurement Report for Device, FRONT, Validation band, UID 0 -, Channel 30000 (30000.0MHz)**

**Device under Test Properties**

Name, Manufacturer	Dimensions [mm]	IMEI	DUT Type
, Device	100.0 x 100.0 x 100.0		Phone

**Exposure Conditions**

Phantom Section	Position, Test Distance [mm]	Band	Group, UID	Frequency [MHz], Channel Number	Conversion Factor
5G Air	FRONT, 5.55	Validation band	CW, 0--	30000.0, 30000	1.0

**Hardware Setup**

Phantom	Medium	Probe, Calibration Date	DAE, Calibration Date
mmWave- 1038	--Air-	EUmmWV4 - SN9450_F1-78GHz, 2020-10-21	DAE4 Sn1372, 2020-08-12

**Scan Setup**

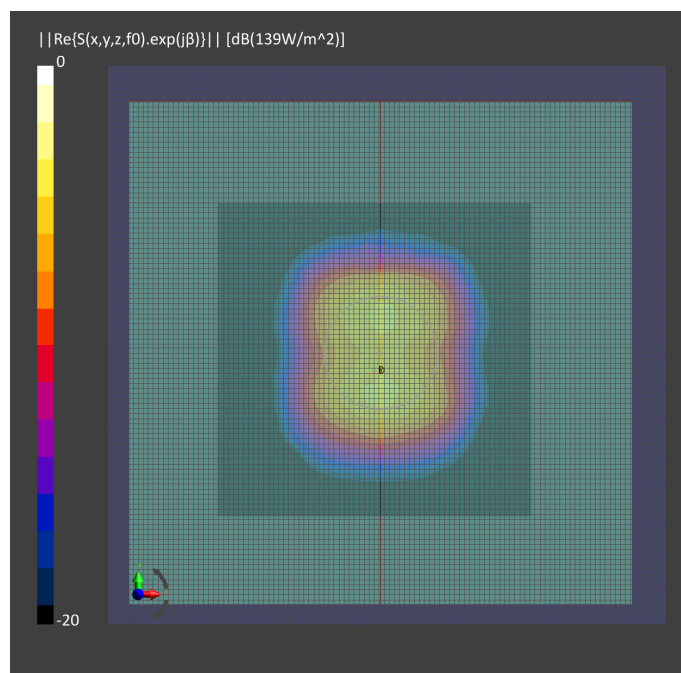
	5G Scan
Grid Extents [mm]	60.0 x 60.0
Grid Steps [lambda]	0.25 x 0.25
Sensor Surface [mm]	5.55
MAIA	N/A

**Measurement Results**

	5G Scan
Date	2021-07-13, 08:27
Avg. Area [cm <sup>2</sup> ]	4.00
pS <sub>tot</sub> avg [W/m <sup>2</sup> ]	36.4
pS <sub>n</sub> avg [W/m <sup>2</sup> ]	35.9
E <sub>peak</sub> [V/m]	139
Power Drift [dB]	0.03

**Warning(s) / Error(s)**

Details	5G Scan
Warning(s)	
Error(s)	



C.11 20210714\_SAR2\_30000 MHz System Check

**Measurement Report for Device, FRONT, Validation band, UID 0 -, Channel 30000 (30000.0MHz)**

**Device under Test Properties**

Name, Manufacturer	Dimensions [mm]	IMEI	DUT Type
, Device	100.0 x 100.0 x 100.0		Phone

**Exposure Conditions**

Phantom Section	Position, Test Distance [mm]	Band	Group, UID	Frequency [MHz], Channel Number	Conversion Factor
5G Air	FRONT, 5.55	Validation band	CW, 0--	30000.0, 30000	1.0

**Hardware Setup**

Phantom	Medium	Probe, Calibration Date	DAE, Calibration Date
mmWave- 1038	--Air-	EUmmWV4 - SN9450_F1-78GHz, 2020-10-21	DAE4 Sn1372, 2020-08-12

**Scan Setup**

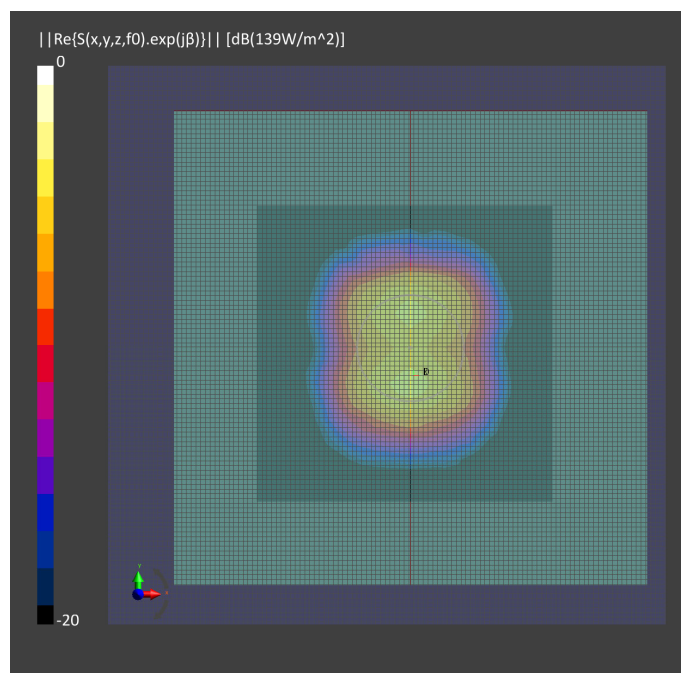
	5G Scan
Grid Extents [mm]	60.0 x 60.0
Grid Steps [lambda]	0.25 x 0.25
Sensor Surface [mm]	5.55
MAIA	N/A

**Measurement Results**

	5G Scan
Date	2021-07-14, 07:59
Avg. Area [cm <sup>2</sup> ]	4.00
pS <sub>tot</sub> avg [W/m <sup>2</sup> ]	36.4
pS <sub>n</sub> avg [W/m <sup>2</sup> ]	35.9
E <sub>peak</sub> [V/m]	139
Power Drift [dB]	-0.12

**Warning(s) / Error(s)**

Details	5G Scan
Warning(s)	
Error(s)	



C.12 20210716\_SAR2\_30000 MHz System Check

**Measurement Report for Device, FRONT, Validation band, UID 0 -, Channel 30000 (30000.0MHz)**

**Device under Test Properties**

Name, Manufacturer	Dimensions [mm]	IMEI	DUT Type
, Device	100.0 x 100.0 x 100.0		Phone

**Exposure Conditions**

Phantom Section	Position, Test Distance [mm]	Band	Group, UID	Frequency [MHz], Channel Number	Conversion Factor
5G Air	FRONT, 5.55	Validation band	CW, 0--	30000.0, 30000	1.0

**Hardware Setup**

Phantom	Medium	Probe, Calibration Date	DAE, Calibration Date
mmWave- 1038	--Air-	EUmmWV4 - SN9450_F1-78GHz, 2020-10-21	DAE4 Sn1372, 2020-08-12

**Scan Setup**

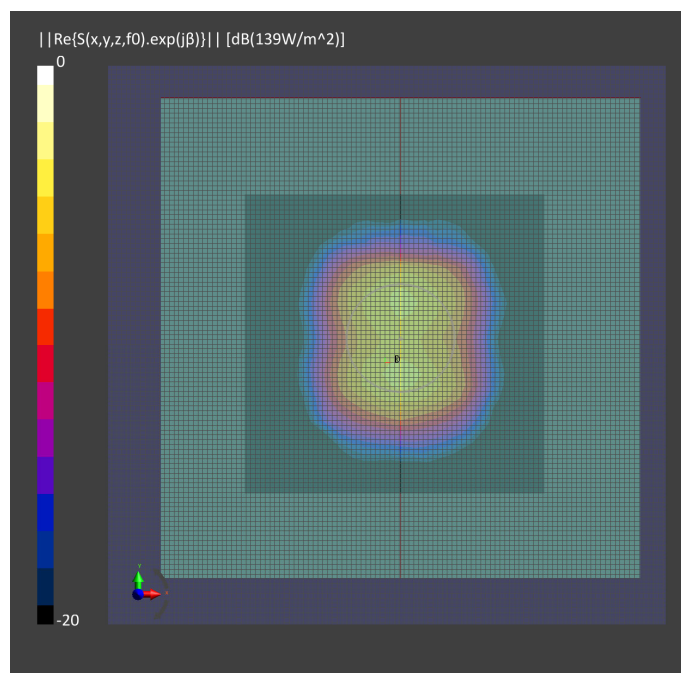
	5G Scan
Grid Extents [mm]	60.0 x 60.0
Grid Steps [lambda]	0.25 x 0.25
Sensor Surface [mm]	5.55
MAIA	N/A

**Measurement Results**

	5G Scan
Date	2021-07-16, 07:42
Avg. Area [cm <sup>2</sup> ]	4.00
pS <sub>tot</sub> avg [W/m <sup>2</sup> ]	36.4
pS <sub>n</sub> avg [W/m <sup>2</sup> ]	35.9
E <sub>peak</sub> [V/m]	139
Power Drift [dB]	0.13

**Warning(s) / Error(s)**

Details	5G Scan
Warning(s)	
Error(s)	



C.13 20210719\_SAR2\_30000 MHz System Check

**Measurement Report for Device, FRONT, Validation band, UID 0 -, Channel 30000 (30000.0MHz)**

**Device under Test Properties**

Name, Manufacturer	Dimensions [mm]	IMEI	DUT Type
, Device	100.0 x 100.0 x 100.0		Phone

**Exposure Conditions**

Phantom Section	Position, Test Distance [mm]	Band	Group, UID	Frequency [MHz], Channel Number	Conversion Factor
5G Air	FRONT, 5.55	Validation band	CW, 0--	30000.0, 30000	1.0

**Hardware Setup**

Phantom	Medium	Probe, Calibration Date	DAE, Calibration Date
mmWave- 1038	--Air-	EUmmWV4 - SN9450_F1-78GHz, 2020-10-21	DAE4 Sn1372, 2020-08-12

**Scan Setup**

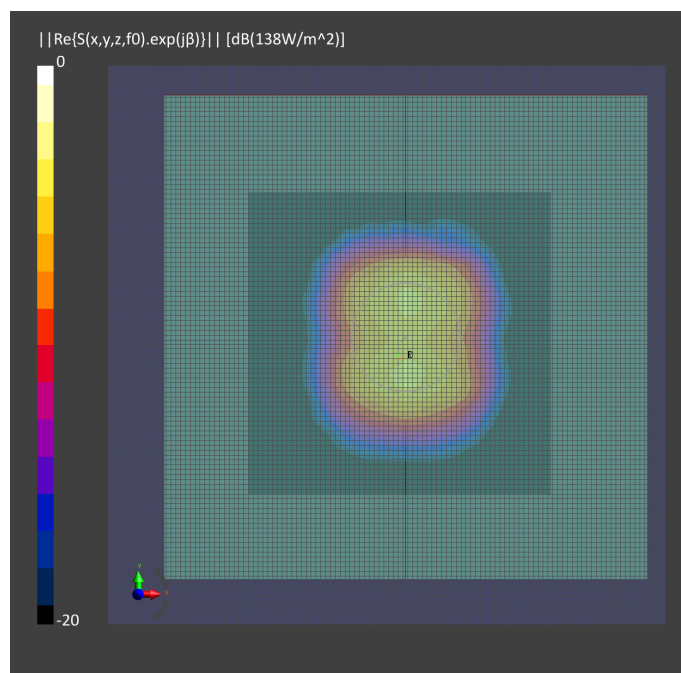
	5G Scan
Grid Extents [mm]	60.0 x 60.0
Grid Steps [lambda]	0.25 x 0.25
Sensor Surface [mm]	5.55
MAIA	N/A

**Measurement Results**

	5G Scan
Date	2021-07-19, 09:02
Avg. Area [cm <sup>2</sup> ]	4.00
pS <sub>tot</sub> avg [W/m <sup>2</sup> ]	36.0
pS <sub>n</sub> avg [W/m <sup>2</sup> ]	35.6
E <sub>peak</sub> [V/m]	138
Power Drift [dB]	-0.12

**Warning(s) / Error(s)**

Details	5G Scan
Warning(s)	
Error(s)	



C.14 20210720\_SAR2\_30000 MHz System Check

**Measurement Report for Device, FRONT, Validation band, UID 0 -, Channel 30000 (30000.0MHz)**

**Device under Test Properties**

Name, Manufacturer	Dimensions [mm]	IMEI	DUT Type
, Device	100.0 x 100.0 x 100.0		Phone

**Exposure Conditions**

Phantom Section	Position, Test Distance [mm]	Band	Group, UID	Frequency [MHz], Channel Number	Conversion Factor
5G Air	FRONT, 5.55	Validation band	CW, 0--	30000.0, 30000	1.0

**Hardware Setup**

Phantom	Medium	Probe, Calibration Date	DAE, Calibration Date
mmWave- 1038	--Air-	EUmmWV4 - SN9450_F1-78GHz, 2020-10-21	DAE4 Sn1372, 2020-08-12

**Scan Setup**

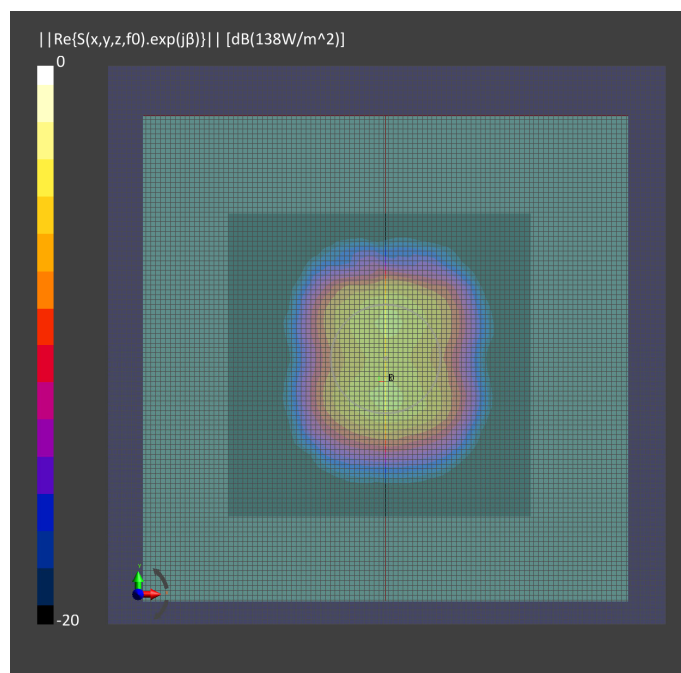
	5G Scan
Grid Extents [mm]	60.0 x 60.0
Grid Steps [lambda]	0.25 x 0.25
Sensor Surface [mm]	5.55
MAIA	N/A

**Measurement Results**

	5G Scan
Date	2021-07-20, 07:27
Avg. Area [cm <sup>2</sup> ]	4.00
pS <sub>tot</sub> avg [W/m <sup>2</sup> ]	35.9
pS <sub>n</sub> avg [W/m <sup>2</sup> ]	35.4
E <sub>peak</sub> [V/m]	138
Power Drift [dB]	0.01

**Warning(s) / Error(s)**

Details	5G Scan
Warning(s)	
Error(s)	



C.15 20210721\_SAR2\_30000 MHz System Check

**Measurement Report for Device, FRONT, Validation band, UID 0 -, Channel 30000 (30000.0MHz)**

**Device under Test Properties**

Name, Manufacturer	Dimensions [mm]	IMEI	DUT Type
, Device	100.0 x 100.0 x 100.0		Phone

**Exposure Conditions**

Phantom Section	Position, Test Distance [mm]	Band	Group, UID	Frequency [MHz], Channel Number	Conversion Factor
5G Air	FRONT, 5.55	Validation band	CW, 0--	30000.0, 30000	1.0

**Hardware Setup**

Phantom	Medium	Probe, Calibration Date	DAE, Calibration Date
mmWave- 1038	--Air-	EUmmWV4 - SN9450_F1-78GHz, 2020-10-21	DAE4 Sn1372, 2020-08-12

**Scan Setup**

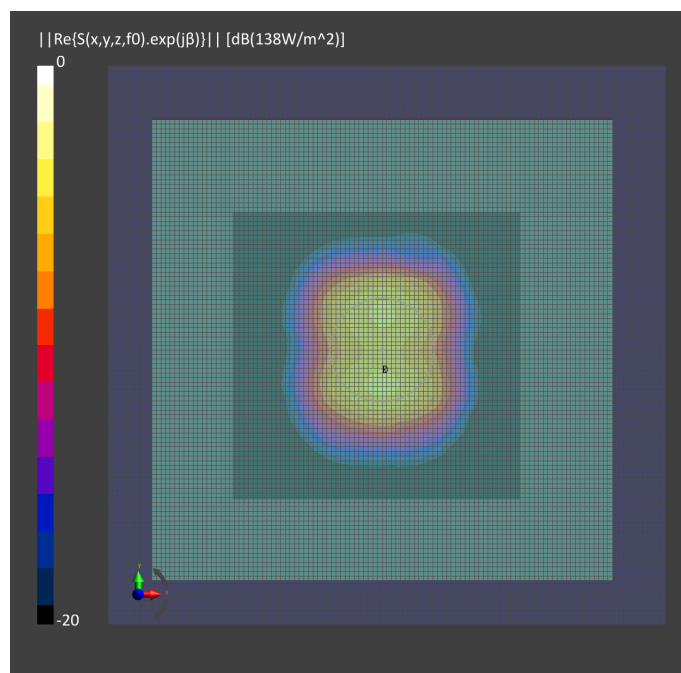
	5G Scan
Grid Extents [mm]	60.0 x 60.0
Grid Steps [lambda]	0.25 x 0.25
Sensor Surface [mm]	5.55
MAIA	N/A

**Measurement Results**

	5G Scan
Date	2021-07-21, 08:23
Avg. Area [cm <sup>2</sup> ]	4.00
pS <sub>tot</sub> avg [W/m <sup>2</sup> ]	36.0
pS <sub>n</sub> avg [W/m <sup>2</sup> ]	35.5
E <sub>peak</sub> [V/m]	138
Power Drift [dB]	-0.06

**Warning(s) / Error(s)**

Details	5G Scan
Warning(s)	
Error(s)	



C.16 20210722\_SAR2\_30000 MHz System Check

**Measurement Report for Device, FRONT, Validation band, UID 0 -, Channel 30000 (30000.0MHz)**

**Device under Test Properties**

Name, Manufacturer	Dimensions [mm]	IMEI	DUT Type
, Device	100.0 x 100.0 x 100.0		Phone

**Exposure Conditions**

Phantom Section	Position, Test Distance [mm]	Band	Group, UID	Frequency [MHz], Channel Number	Conversion Factor
5G Air	FRONT, 5.55	Validation band	CW, 0--	30000.0, 30000	1.0

**Hardware Setup**

Phantom	Medium	Probe, Calibration Date	DAE, Calibration Date
mmWave- 1038	--Air-	EUmmWV4 - SN9450_F1-78GHz, 2020-10-21	DAE4 Sn1372, 2020-08-12

**Scan Setup**

	5G Scan
Grid Extents [mm]	60.0 x 60.0
Grid Steps [lambda]	0.25 x 0.25
Sensor Surface [mm]	5.55
MAIA	N/A

**Measurement Results**

	5G Scan
Date	2021-07-22, 08:39
Avg. Area [cm <sup>2</sup> ]	4.00
pS <sub>tot</sub> avg [W/m <sup>2</sup> ]	36.3
pS <sub>n</sub> avg [W/m <sup>2</sup> ]	35.9
E <sub>peak</sub> [V/m]	140
Power Drift [dB]	-0.07

**Warning(s) / Error(s)**

Details	5G Scan
Warning(s)	
Error(s)	

