

## Appendix C System Check (PD)

C.1 System check result

C.2 20220308\_SAR2\_30000 MHz System Check

### Circular

Measurement Report for Device, FRONT, Custom Band, UID 0 -, Channel 30000000 (30000.0MHz)

#### Device under Test Properties

Model, Manufacturer	Dimensions [mm]	IMEI	DUT Type
, Device	100.0 x 100.0 x 100.0		Phone

#### Exposure Conditions

Phantom Section	Position, Test Distance [mm]	Band	Group, UID	Frequency [MHz], Channel Number	Conversion Factor
5G Air	FRONT, 5.55	Custom Band	CW, 0--	30000.0, 30000000	1.0

#### Hardware Setup

Phantom	Medium	Probe, Calibration Date	DAE, Calibration Date
mmWave- 1038	Air---	EUmmWV4 - SN9450_F1-55GHz, 2021-11-11	DAE4 Sn1369, 2021-05-11

#### Scan Setup

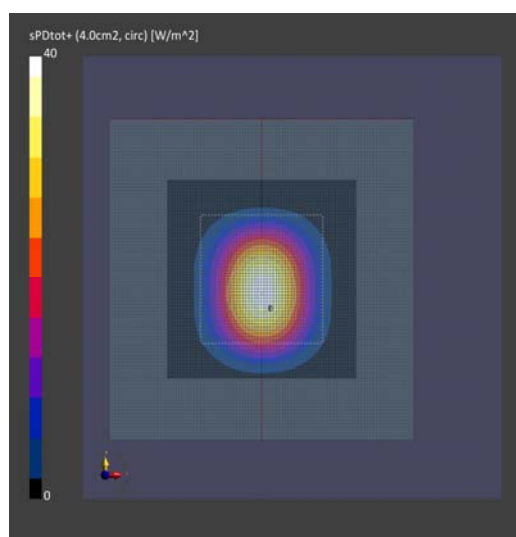
5G Scan		5G Scan	
Grid Extents [mm]	60.0 x 60.0	Date	2022-03-08, 09:33
Grid Steps [lambda]	0.25 x 0.25	Avg. Area [cm <sup>2</sup> ]	4.00
Sensor Surface [mm]	5.55	psPDn+ [W/m <sup>2</sup> ]	38.2
MAIA	N/A	psPDtot+ [W/m <sup>2</sup> ]	38.8
		psPDmod+ [W/m <sup>2</sup> ]	39.0
		E <sub>max</sub> [V/m]	138
		Power Drift [dB]	-0.07

#### Warning(s) / Error(s)

##### Details 5G Scan

Warning(s)

Error(s)



**Square**  
**Measurement Report for Device, FRONT, Custom Band, UID 0 -, Channel 30000000 (30000.0MHz)**  
**Device under Test Properties**

Model, Manufacturer	Dimensions [mm]	IMEI	DUT Type
, Device	100.0 x 100.0 x 100.0		Phone

**Exposure Conditions**

Phantom Section	Position, Test Distance [mm]	Band	Group, UID	Frequency [MHz], Channel Number	Conversion Factor
5G Air	FRONT, 5.55	Custom Band	CW, 0--	30000.0, 30000000	1.0

**Hardware Setup**

Phantom	Medium	Probe, Calibration Date	DAE, Calibration Date
mmWave- 1038	Air---	EUmmWV4 - SN9450_F1-55GHz, 2021-11-11	DAE4 Sn1369, 2021-05-11

**Scan Setup**

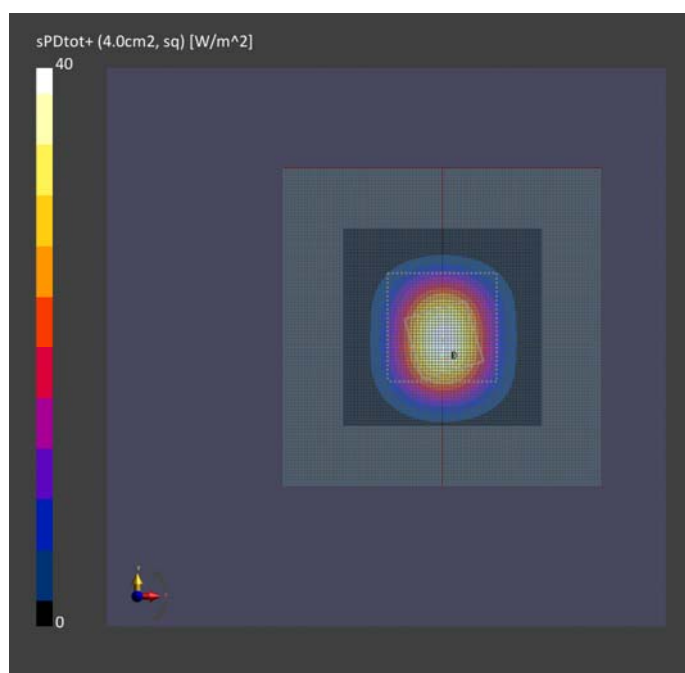
	5G Scan
Grid Extents [mm]	60.0 x 60.0
Grid Steps [lambda]	0.25 x 0.25
Sensor Surface [mm]	5.55
MAIA	N/A

**Measurement Results**

	5G Scan
Date	2022-03-08, 09:33
Avg. Area [cm <sup>2</sup> ]	4.00
psPDn+ [W/m <sup>2</sup> ]	38.0
psPDtot+ [W/m <sup>2</sup> ]	38.6
psPDmod+ [W/m <sup>2</sup> ]	38.8
E <sub>max</sub> [V/m]	138
Power Drift [dB]	-0.07

**Warning(s) / Error(s)**

Details	5G Scan
Warning(s)	
Error(s)	



C.3 20220309\_SAR2\_30000 MHz System Check

**Circular**

Measurement Report for Device, FRONT, Custom Band, UID 0 -, Channel 30000000 (30000.0MHz)

**Device under Test Properties**

Model, Manufacturer	Dimensions [mm]	IMEI	DUT Type
, Device	100.0 x 100.0 x 100.0		Phone

**Exposure Conditions**

Phantom Section	Position, Test Distance [mm]	Band	Group, UID	Frequency [MHz], Channel Number	Conversion Factor
5G Air	FRONT, 5.55	Custom Band	CW, 0--	30000.0, 30000000	1.0

**Hardware Setup**

Phantom	Medium	Probe, Calibration Date	DAE, Calibration Date
mmWave- 1038	Air---	EUmmWV4 - SN9450_F1-55GHz, 2021-11-11	DAE4 Sn1369, 2021-05-11

**Scan Setup**

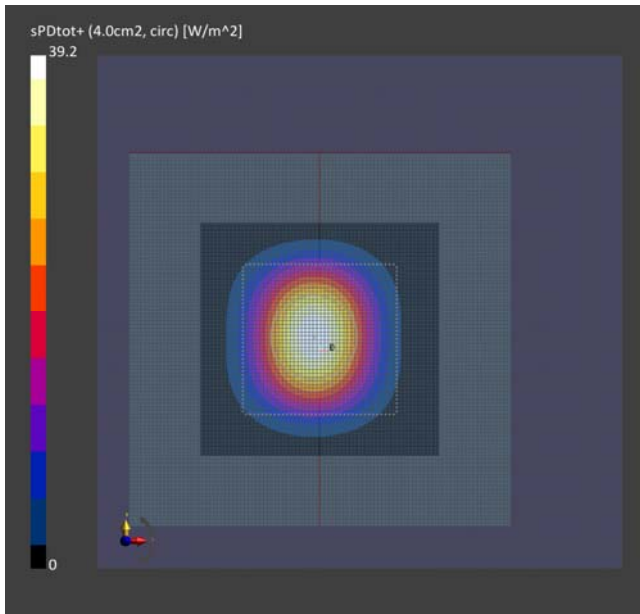
	5G Scan
Grid Extents [mm]	60.0 x 60.0
Grid Steps [lambda]	0.25 x 0.25
Sensor Surface [mm]	5.55
MAIA	N/A

**Measurement Results**

	5G Scan
Date	2022-03-09, 10:17
Avg. Area [cm <sup>2</sup> ]	4.00
psPDn+ [W/m <sup>2</sup> ]	38.1
psPDtot+ [W/m <sup>2</sup> ]	38.8
psPDmod+ [W/m <sup>2</sup> ]	39.0
E <sub>max</sub> [V/m]	139
Power Drift [dB]	-0.03

**Warning(s) / Error(s)**

Details	5G Scan
Warning(s)	
Error(s)	



**Square**

Measurement Report for Device, FRONT, Custom Band, UID 0 -, Channel 30000000 (30000.0MHz)

**Device under Test Properties**

Model, Manufacturer	Dimensions [mm]	IMEI	DUT Type
, Device	100.0 x 100.0 x 100.0		Phone

**Exposure Conditions**

Phantom Section	Position, Test Distance [mm]	Band	Group, UID	Frequency [MHz], Channel Number	Conversion Factor
5G Air	FRONT, 5.55	Custom Band	CW, 0--	30000.0, 30000000	1.0

**Hardware Setup**

Phantom	Medium	Probe, Calibration Date	DAE, Calibration Date
mmWave- 1038	Air---	EUmmWV4 - SN9450_F1- 55GHz, 2021-11-11	DAE4 Sn1369, 2021- 05-11

**Scan Setup**

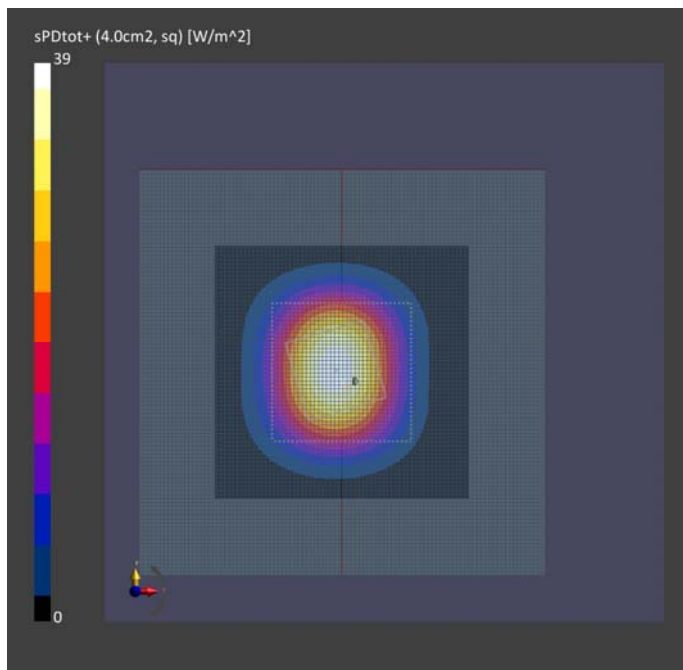
	5G Scan
Grid Extents [mm]	60.0 x 60.0
Grid Steps [lambda]	0.25 x 0.25
Sensor Surface [mm]	5.55
MAIA	N/A

**Measurement Results**

	5G Scan
Date	2022-03-09, 10:17
Avg. Area [cm <sup>2</sup> ]	4.00
psPDn+ [W/m <sup>2</sup> ]	37.9
psPDtot+ [W/m <sup>2</sup> ]	38.7
psPDmod+ [W/m <sup>2</sup> ]	38.8
E <sub>max</sub> [V/m]	139
Power Drift [dB]	-0.03

**Warning(s) / Error(s)**

Details	5G Scan
Warning(s)	
Error(s)	



C.4 20220310\_SAR2\_30000 MHz System Check

**Circular**

Measurement Report for Device, FRONT, Custom Band, UID 0 -, Channel 30000000 (30000.0MHz)

**Device under Test Properties**

Model, Manufacturer	Dimensions [mm]	IMEI	DUT Type
, Device	100.0 x 100.0 x 100.0		Phone

**Exposure Conditions**

Phantom Section	Position, Test Distance [mm]	Band	Group, UID	Frequency [MHz], Channel Number	Conversion Factor
5G Air	FRONT, 5.55	Custom Band	CW, 0--	30000.0, 30000000	1.0

**Hardware Setup**

Phantom	Medium	Probe, Calibration Date	DAE, Calibration Date
mmWave- 1038	Air---	EUmmWV4 - SN9450_F1-55GHz, 2021-11-11	DAE4 Sn1369, 2021-05-11

**Scan Setup**

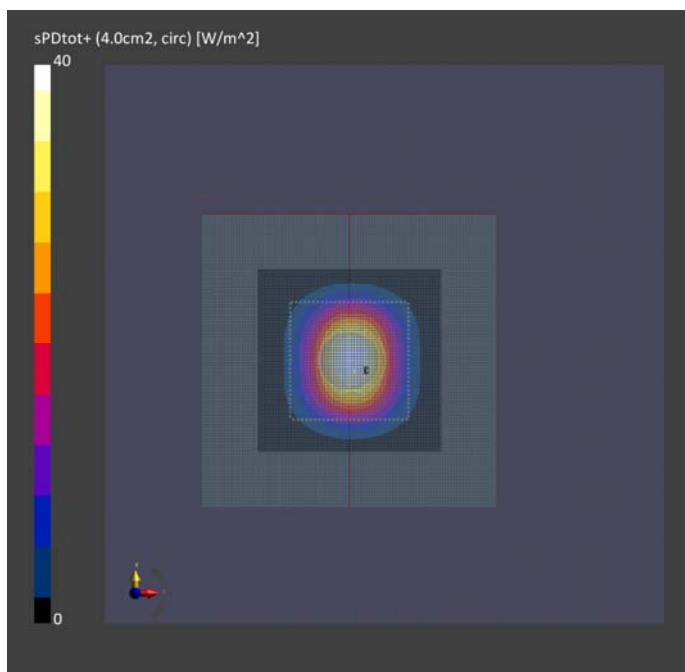
	5G Scan
Grid Extents [mm]	60.0 x 60.0
Grid Steps [lambda]	0.25 x 0.25
Sensor Surface [mm]	5.55
MAIA	N/A

**Measurement Results**

	5G Scan
Date	2022-03-10, 10:49
Avg. Area [cm <sup>2</sup> ]	4.00
psPDn+ [W/m <sup>2</sup> ]	37.8
psPDtot+ [W/m <sup>2</sup> ]	38.2
psPDmod+ [W/m <sup>2</sup> ]	38.3
E <sub>max</sub> [V/m]	141
Power Drift [dB]	0.01

**Warning(s) / Error(s)**

Details	5G Scan
Warning(s)	
Error(s)	



**Square**

Measurement Report for Device, FRONT, Custom Band, UID 0 -, Channel 30000000 (30000.0MHz)

**Device under Test Properties**

Model, Manufacturer	Dimensions [mm]	IMEI	DUT Type
, Device	100.0 x 100.0 x 100.0		Phone

**Exposure Conditions**

Phantom Section	Position, Test Distance [mm]	Band	Group, UID	Frequency [MHz], Channel Number	Conversion Factor
5G Air	FRONT, 5.55	Custom Band	CW, 0--	30000.0, 30000000	1.0

**Hardware Setup**

Phantom	Medium	Probe, Calibration Date	DAE, Calibration Date
mmWave- 1038	Air---	EUmmWV4 - SN9450_F1-55GHz, 2021-11-11	DAE4 Sn1369, 2021-05-11

**Scan Setup**

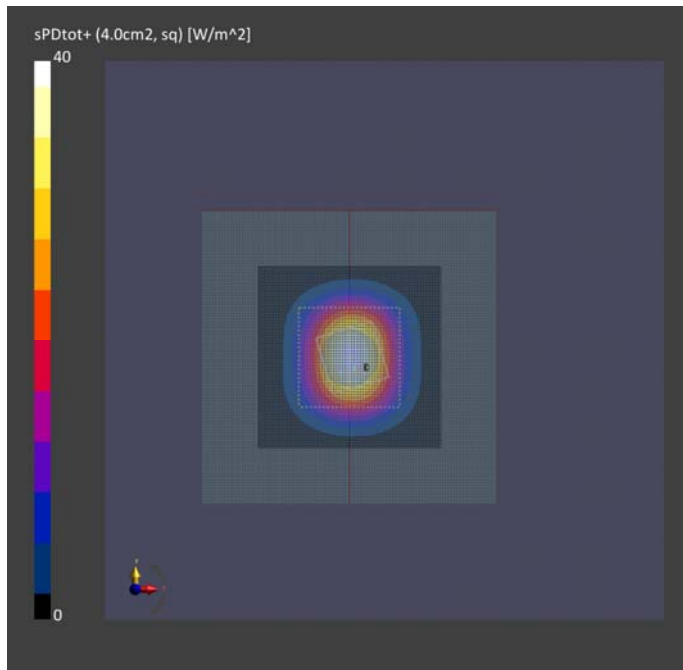
	5G Scan
Grid Extents [mm]	60.0 x 60.0
Grid Steps [lambda]	0.25 x 0.25
Sensor Surface [mm]	5.55
MAIA	N/A

**Measurement Results**

	5G Scan
Date	2022-03-10, 10:49
Avg. Area [cm <sup>2</sup> ]	4.00
psPDn+ [W/m <sup>2</sup> ]	37.7
psPDtot+ [W/m <sup>2</sup> ]	38.1
psPDmod+ [W/m <sup>2</sup> ]	38.2
E <sub>max</sub> [V/m]	141
Power Drift [dB]	0.01

**Warning(s) / Error(s)**

Details	5G Scan
Warning(s)	
Error(s)	



Measurement Report for Device, FRONT, Custom Band, UID 0 -, Channel 30000000 (30000.0MHz)

Device under Test Properties

Model, Manufacturer	Dimensions [mm]	IMEI	DUT Type
, Device	100.0 x 100.0 x 100.0		Phone

Exposure Conditions

Phantom Section	Position, Test Distance [mm]	Band	Group, UID	Frequency [MHz], Channel Number	Conversion Factor
5G Air	FRONT, 5.55	Custom Band	CW, 0--	30000.0, 30000000	1.0

Hardware Setup

Phantom	Medium	Probe, Calibration Date	DAE, Calibration Date
mmWave- 1038	Air---	EUmmWV4 - SN9450_F1-55GHz, 2021-11-11	DAE4 Sn1369, 2021-05-11

Scan Setup

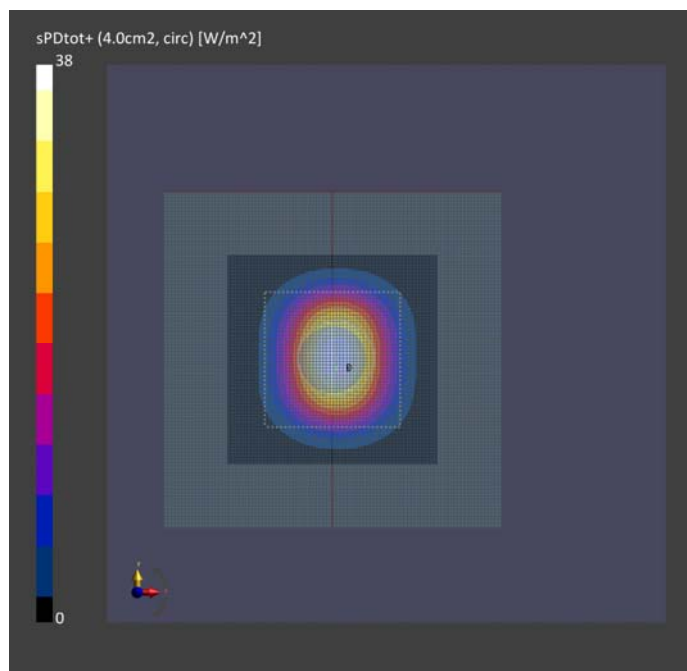
	5G Scan
Grid Extents [mm]	60.0 x 60.0
Grid Steps [lambda]	0.25 x 0.25
Sensor Surface [mm]	5.55
MAIA	N/A

Measurement Results

	5G Scan
Date	2022-03-14, 09:57
Avg. Area [cm <sup>2</sup> ]	4.00
psPDn+ [W/m <sup>2</sup> ]	37.2
psPDtot+ [W/m <sup>2</sup> ]	37.6
psPDmod+ [W/m <sup>2</sup> ]	37.7
E <sub>max</sub> [V/m]	141
Power Drift [dB]	-0.00

Warning(s) / Error(s)

Details	5G Scan
Warning(s)	
Error(s)	



**Square**  
**Measurement Report for Device, FRONT, Custom Band, UID 0 -, Channel 30000000 (30000.0MHz)**  
**Device under Test Properties**

Model, Manufacturer	Dimensions [mm]	IMEI	DUT Type
, Device	100.0 x 100.0 x 100.0		Phone

**Exposure Conditions**

Phantom Section	Position, Test Distance [mm]	Band	Group, UID	Frequency [MHz], Channel Number	Conversion Factor
5G Air	FRONT, 5.55	Custom Band	CW, 0--	30000.0, 30000000	1.0

**Hardware Setup**

Phantom	Medium	Probe, Calibration Date	DAE, Calibration Date
mmWave- 1038	Air---	EUmmWV4 - SN9450_F1-55GHz, 2021-11-11	DAE4 Sn1369, 2021-05-11

**Scan Setup**

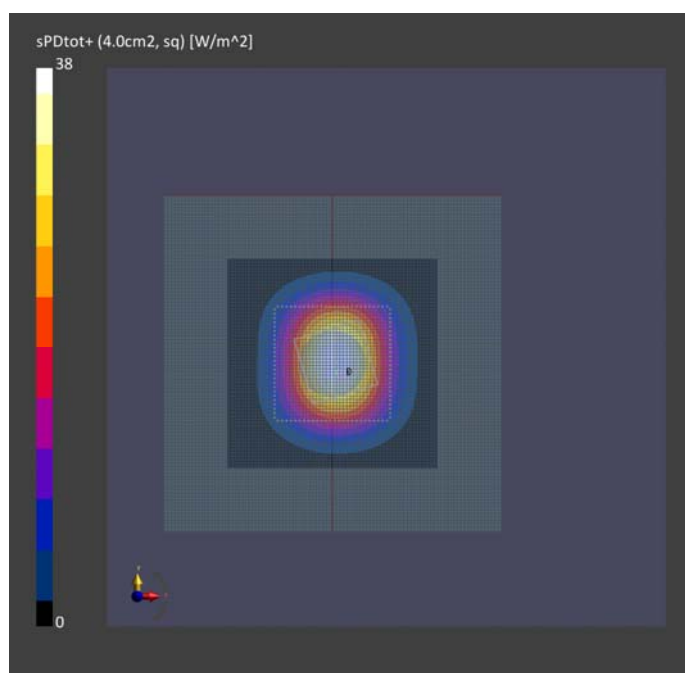
	5G Scan
Grid Extents [mm]	60.0 x 60.0
Grid Steps [lambda]	0.25 x 0.25
Sensor Surface [mm]	5.55
MAIA	N/A

**Measurement Results**

	5G Scan
Date	2022-03-14, 09:57
Avg. Area [cm <sup>2</sup> ]	4.00
psPDn+ [W/m <sup>2</sup> ]	37.2
psPDtot+ [W/m <sup>2</sup> ]	37.5
psPDmod+ [W/m <sup>2</sup> ]	37.6
E <sub>max</sub> [V/m]	141
Power Drift [dB]	-0.00

**Warning(s) / Error(s)**

Details	5G Scan
Warning(s)	
Error(s)	





C.6 20220315\_SAR2\_30000 MHz System Check

**Circular**

**Measurement Report for Device, FRONT, Custom Band, UID 0 -, Channel 30000000 (30000.0MHz)**

**Device under Test Properties**

Model, Manufacturer	Dimensions [mm]	IMEI	DUT Type
, Device	100.0 x 100.0 x 100.0		Phone

**Exposure Conditions**

Phantom Section	Position, Test Distance [mm]	Band	Group, UID	Frequency [MHz], Channel Number	Conversion Factor
5G Air	FRONT, 5.55	Custom Band	CW, 0--	30000.0, 30000000	1.0

**Hardware Setup**

Phantom	Medium	Probe, Calibration Date	DAE, Calibration Date
mmWave- 1038	Air---	EUmmWV4 - SN9450_F1-55GHz, 2021-11-11	DAE4 Sn1369, 2021-05-11

**Scan Setup**

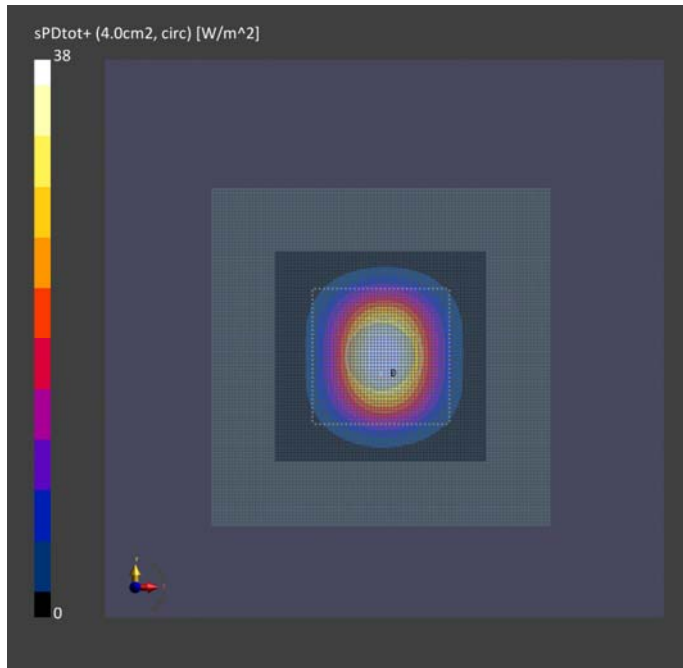
	5G Scan
Grid Extents [mm]	60.0 x 60.0
Grid Steps [lambda]	0.25 x 0.25
Sensor Surface [mm]	5.55
MAIA	N/A

**Measurement Results**

	5G Scan
Date	2022-03-15, 09:26
Avg. Area [cm <sup>2</sup> ]	4.00
psPDn+ [W/m <sup>2</sup> ]	37.5
psPDtot+ [W/m <sup>2</sup> ]	38.0
psPDmod+ [W/m <sup>2</sup> ]	38.1
E <sub>max</sub> [V/m]	139
Power Drift [dB]	0.05

**Warning(s) / Error(s)**

Details	5G Scan
Warning(s)	
Error(s)	



**Square**

Measurement Report for Device, FRONT, Custom Band, UID 0 -, Channel 30000000 (30000.0MHz)

**Device under Test Properties**

Model, Manufacturer	Dimensions [mm]	IMEI	DUT Type
, Device	100.0 x 100.0 x 100.0		Phone

**Exposure Conditions**

Phantom Section	Position, Test Distance [mm]	Band	Group, UID	Frequency [MHz], Channel Number	Conversion Factor
5G Air	FRONT, 5.55	Custom Band	CW, 0--	30000.0, 30000000	1.0

**Hardware Setup**

Phantom	Medium	Probe, Calibration Date	DAE, Calibration Date
mmWave- 1038	Air---	EUmmWV4 - SN9450_F1-55GHz, 2021-11-11	DAE4 Sn1369, 2021-05-11

**Scan Setup**

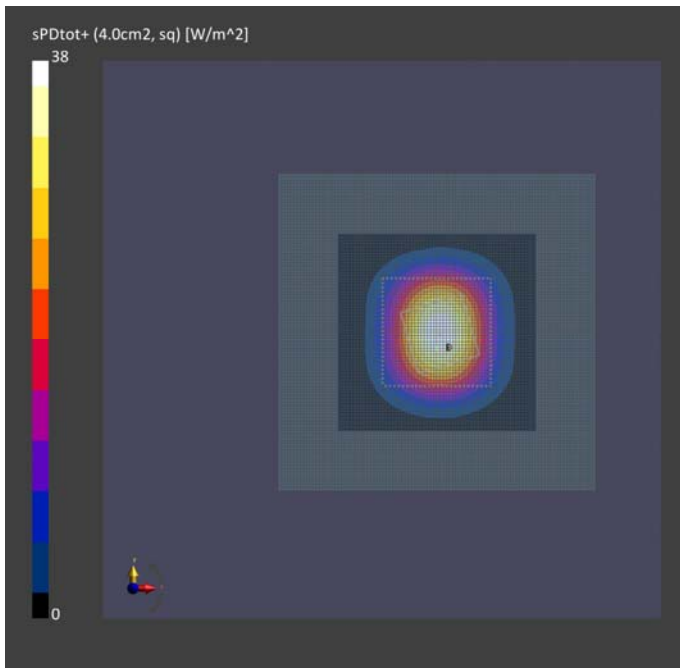
	5G Scan
Grid Extents [mm]	60.0 x 60.0
Grid Steps [lambda]	0.25 x 0.25
Sensor Surface [mm]	5.55
MAIA	N/A

**Measurement Results**

	5G Scan
Date	2022-03-15, 09:26
Avg. Area [cm <sup>2</sup> ]	4.00
psPDn+ [W/m <sup>2</sup> ]	37.4
psPDtot+ [W/m <sup>2</sup> ]	37.9
psPDmod+ [W/m <sup>2</sup> ]	38.0
E <sub>max</sub> [V/m]	139
Power Drift [dB]	0.05

**Warning(s) / Error(s)**

Details	5G Scan
Warning(s)	
Error(s)	



C.7 20220316\_SAR2\_30000 MHz System Check

**Circular**

Measurement Report for Device, FRONT, Custom Band, UID 0 -, Channel 30000000 (30000.0MHz)

**Device under Test Properties**

Model, Manufacturer	Dimensions [mm]	IMEI	DUT Type
, Device	100.0 x 100.0 x 100.0		Phone

**Exposure Conditions**

Phantom Section	Position, Test Distance [mm]	Band	Group, UID	Frequency [MHz], Channel Number	Conversion Factor
5G Air	FRONT, 5.55	Custom Band	CW, 0--	30000.0, 30000000	1.0

**Hardware Setup**

Phantom	Medium	Probe, Calibration Date	DAE, Calibration Date
mmWave- 1038	Air---	EUmmWV4 - SN9450_F1-55GHz, 2021-11-11	DAE4 Sn1369, 2021-05-11

**Scan Setup**

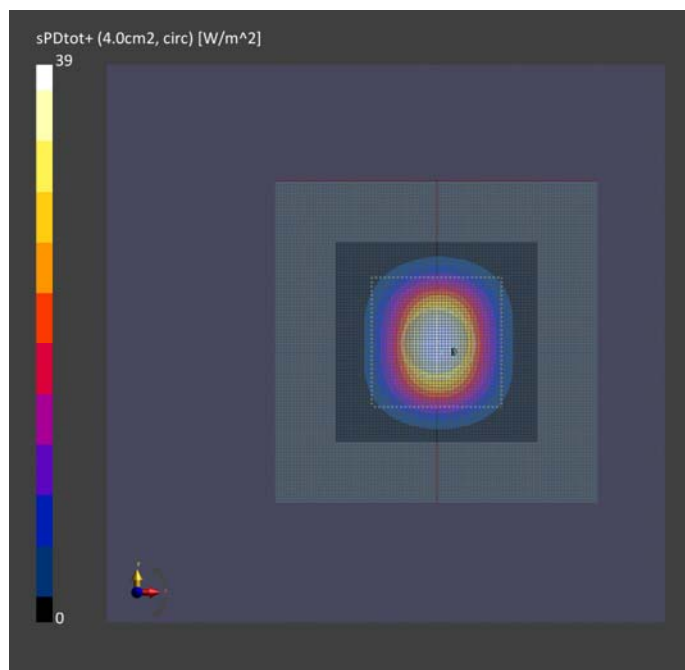
	5G Scan
Grid Extents [mm]	60.0 x 60.0
Grid Steps [lambda]	0.25 x 0.25
Sensor Surface [mm]	5.55
MAIA	N/A

**Measurement Results**

	5G Scan
Date	2022-03-16, 09:46
Avg. Area [cm <sup>2</sup> ]	4.00
psPDn+ [W/m <sup>2</sup> ]	38.1
psPDtot+ [W/m <sup>2</sup> ]	38.6
psPDmod+ [W/m <sup>2</sup> ]	38.7
E <sub>max</sub> [V/m]	141
Power Drift [dB]	0.04

**Warning(s) / Error(s)**

Details	5G Scan
Warning(s)	
Error(s)	



**Square**  
**Measurement Report for Device, FRONT, Custom Band, UID 0 -, Channel 30000000 (30000.0MHz)**  
**Device under Test Properties**

Model, Manufacturer	Dimensions [mm]	IMEI	DUT Type
, Device	100.0 x 100.0 x 100.0		Phone

**Exposure Conditions**

Phantom Section	Position, Test Distance [mm]	Band	Group, UID	Frequency [MHz], Channel Number	Conversion Factor
5G Air	FRONT, 5.55	Custom Band	CW, 0--	30000.0, 30000000	1.0

**Hardware Setup**

Phantom	Medium	Probe, Calibration Date	DAE, Calibration Date
mmWave- 1038	Air---	EUmmWV4 - SN9450_F1-55GHz, 2021-11-11	DAE4 Sn1369, 2021-05-11

**Scan Setup**

	5G Scan
Grid Extents [mm]	60.0 x 60.0
Grid Steps [lambda]	0.25 x 0.25
Sensor Surface [mm]	5.55
MAIA	N/A

**Measurement Results**

	5G Scan
Date	2022-03-16, 09:46
Avg. Area [cm <sup>2</sup> ]	4.00
psPDn+ [W/m <sup>2</sup> ]	38.1
psPDtot+ [W/m <sup>2</sup> ]	38.5
psPDmod+ [W/m <sup>2</sup> ]	38.6
E <sub>max</sub> [V/m]	141
Power Drift [dB]	0.04

**Warning(s) / Error(s)**

Details	5G Scan
Warning(s)	
Error(s)	

