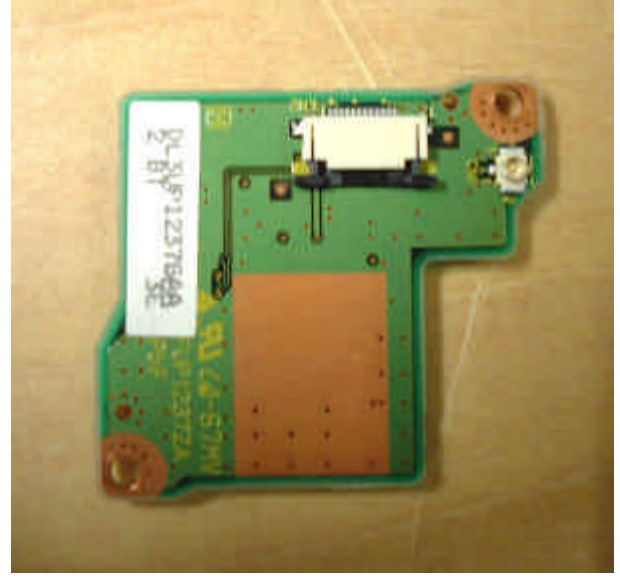


3) Bluetooth Module exterior photo



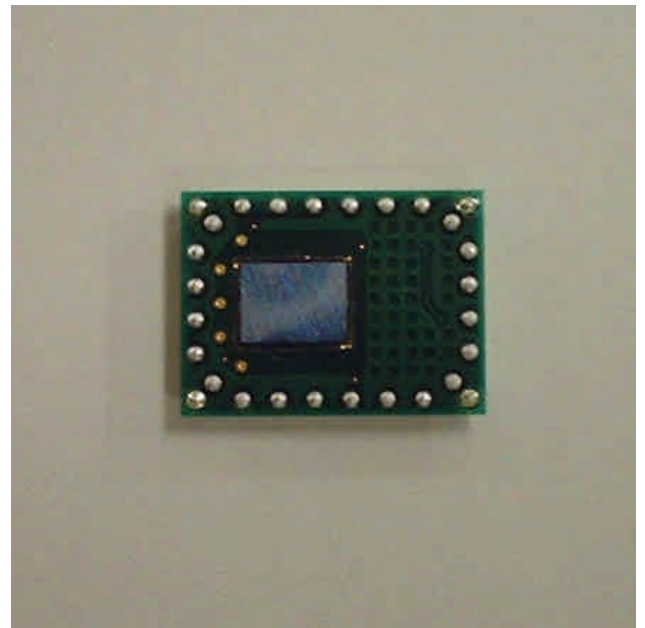
Top View of Bluetooth Module with Daughter-Board



Bottom View of Bluetooth module with Daughter-Board

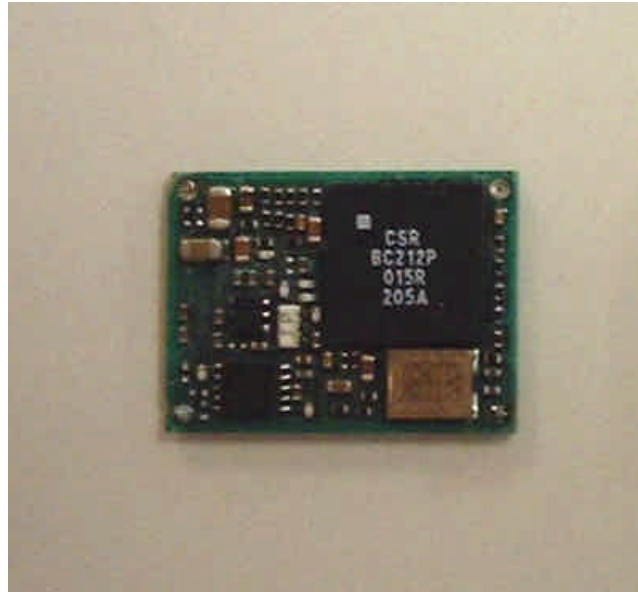


Top View of Bluetooth Module



Bottom View of Bluetooth Module

4) Bluetooth Module Interior photo



Bluetooth Module without shield

5) WLAN Card position



WLAN Card Position

6) WLAN exterior photo

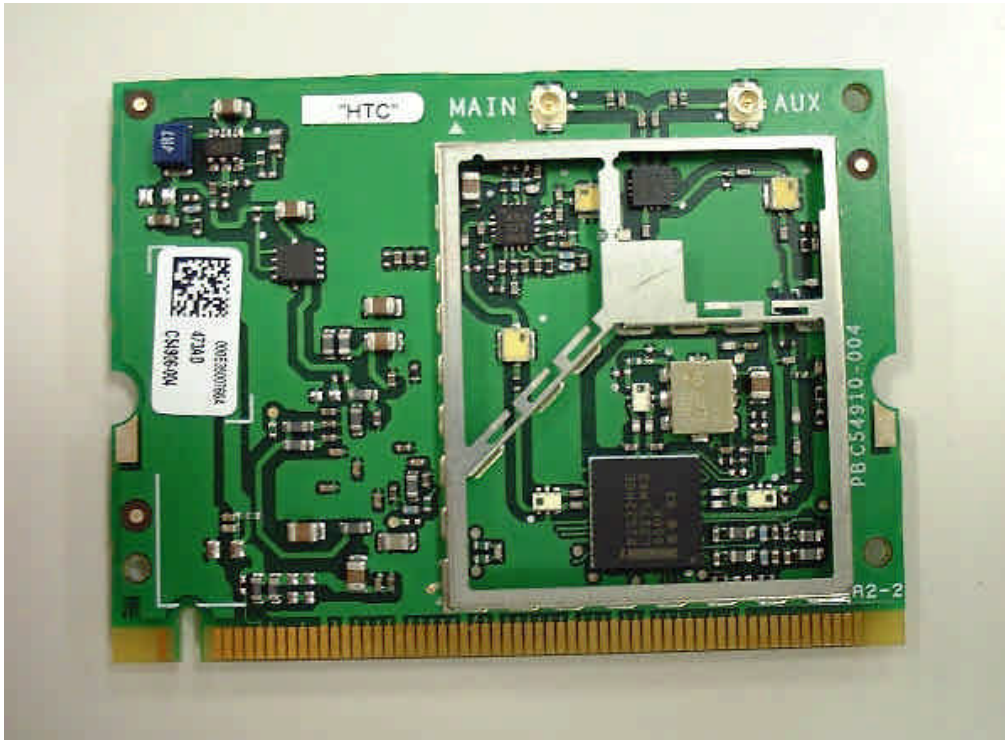


WLAN Top View

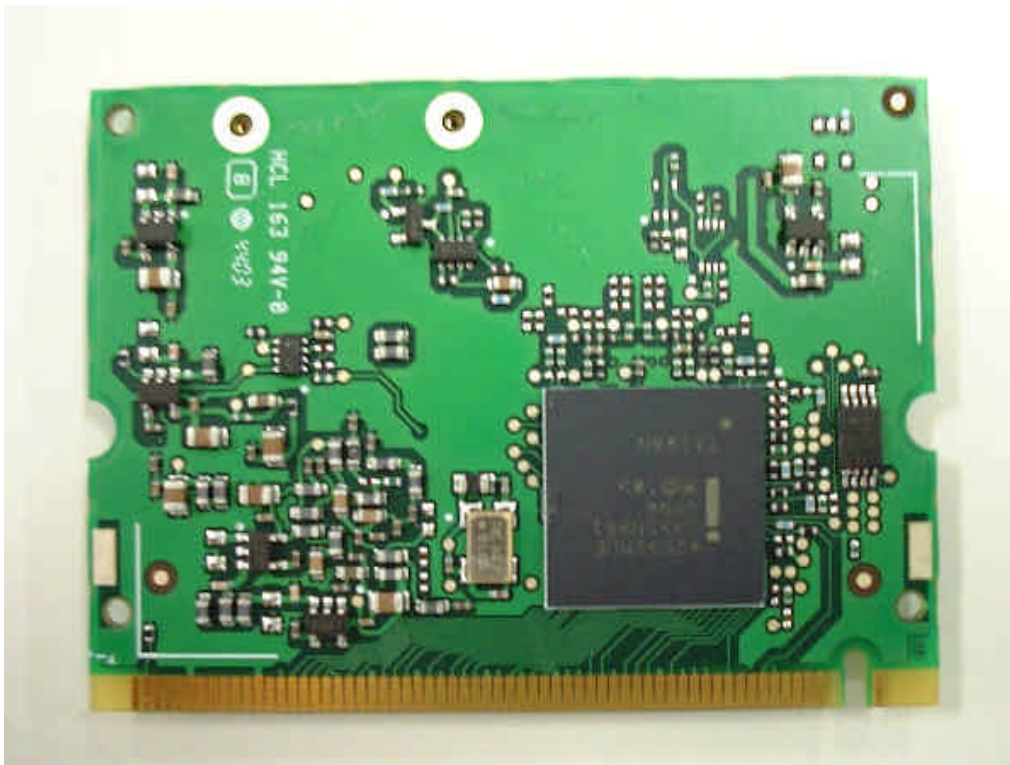


WLAN Bottom View

7) WLAN interior photo



WLAN inside Top View



WLAN inside Bottom View

8) CDMA module position



SB555 Module Adapter Position



SB555 Module Adapter Slide Position



9) CDMA Module photo



SB555 Module Top View



SB555 module Bottom View

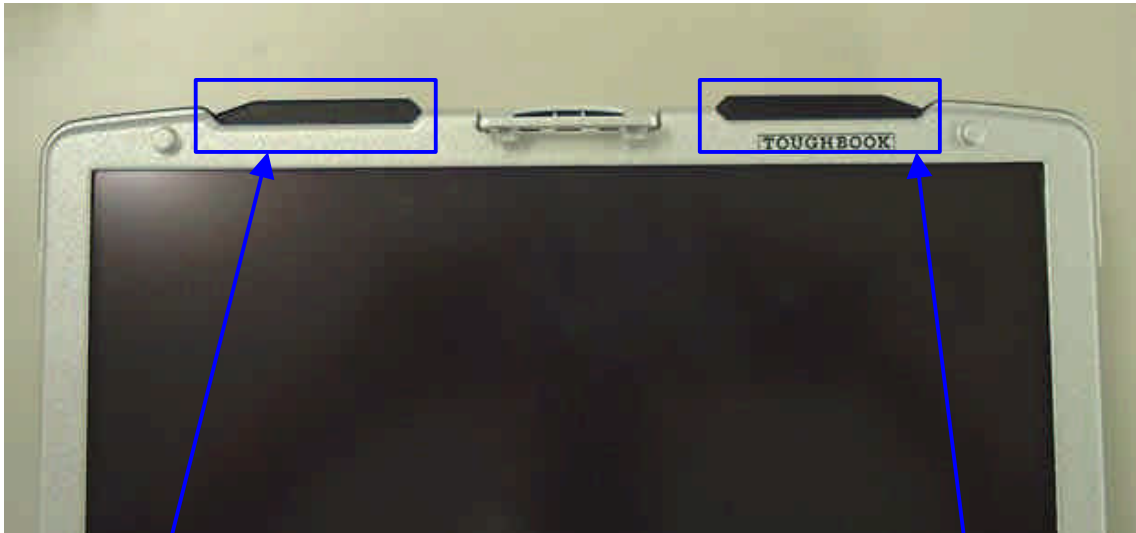


SB555 Module Interior Top View



SB555 Module Interior Bottom View

10) Antenna position (WLAN)

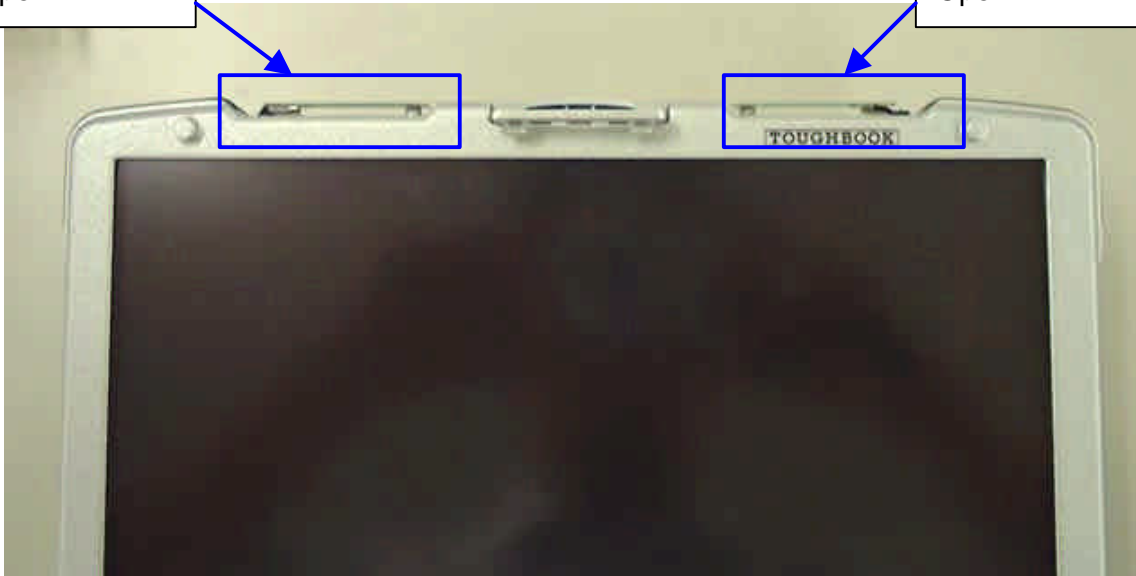


Receive only  
Antenna Cover

Send & Receive  
Antenna Cover

Antenna Cover  
Open

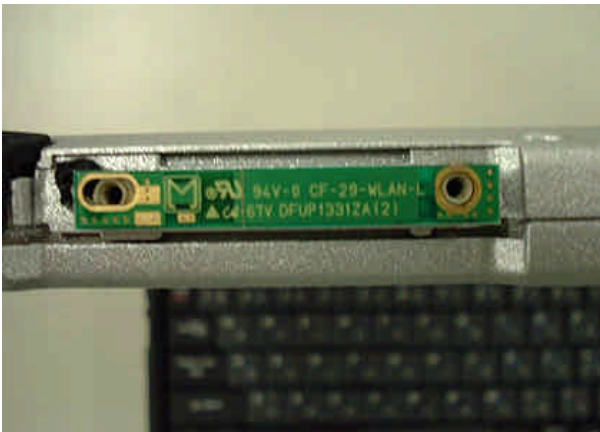
Antenna Cover  
Open



11) Antenna Magnified photo (WLAN)



Top View

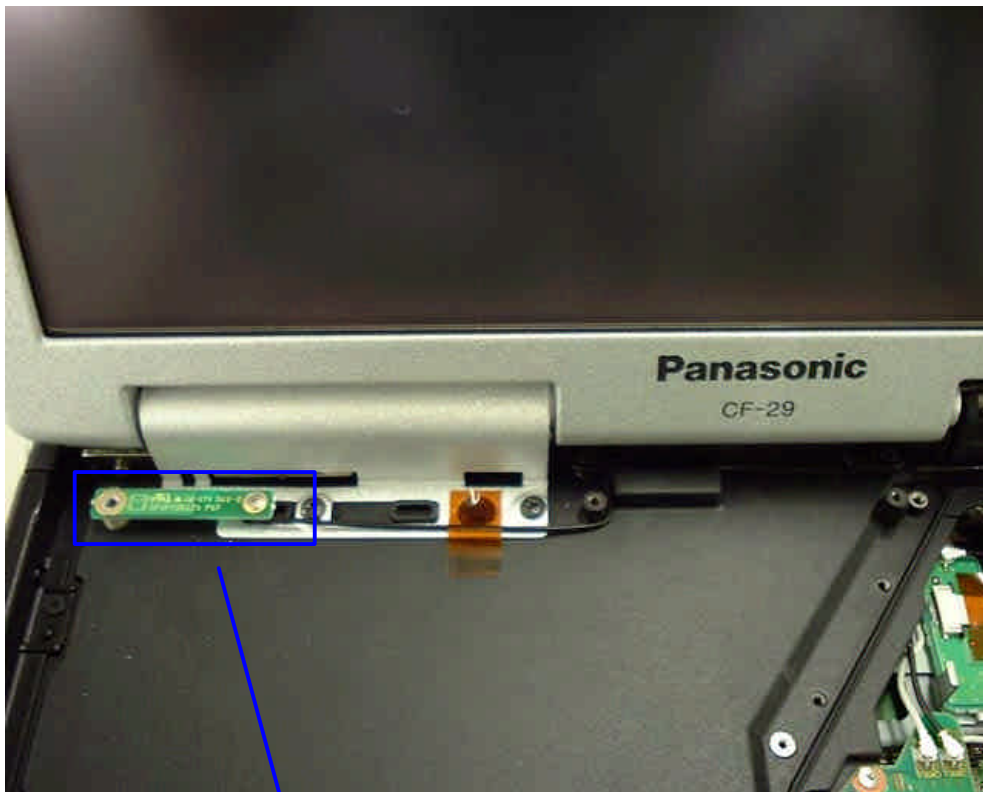


Receive only Antenna View

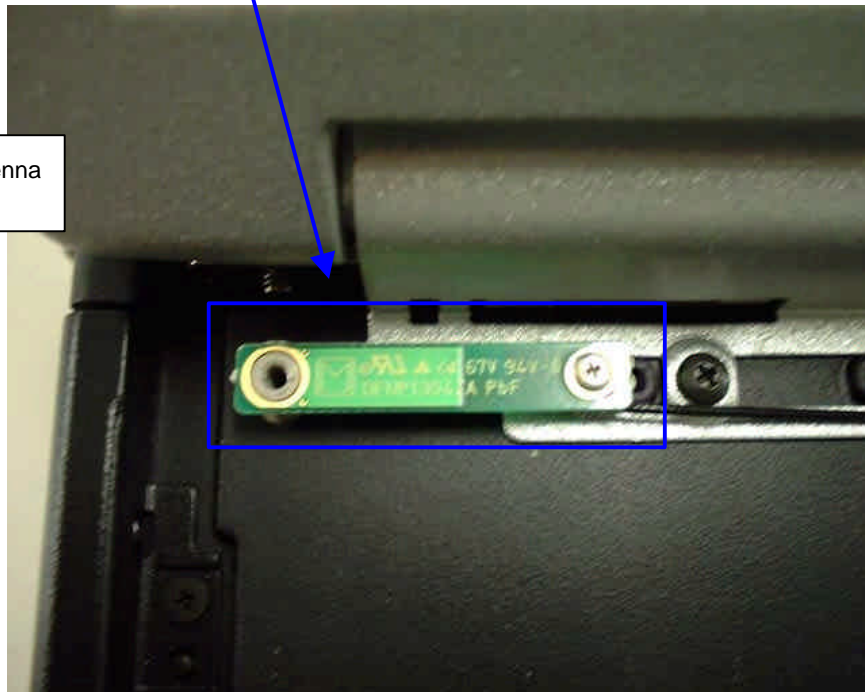


Send & Receive Antenna View

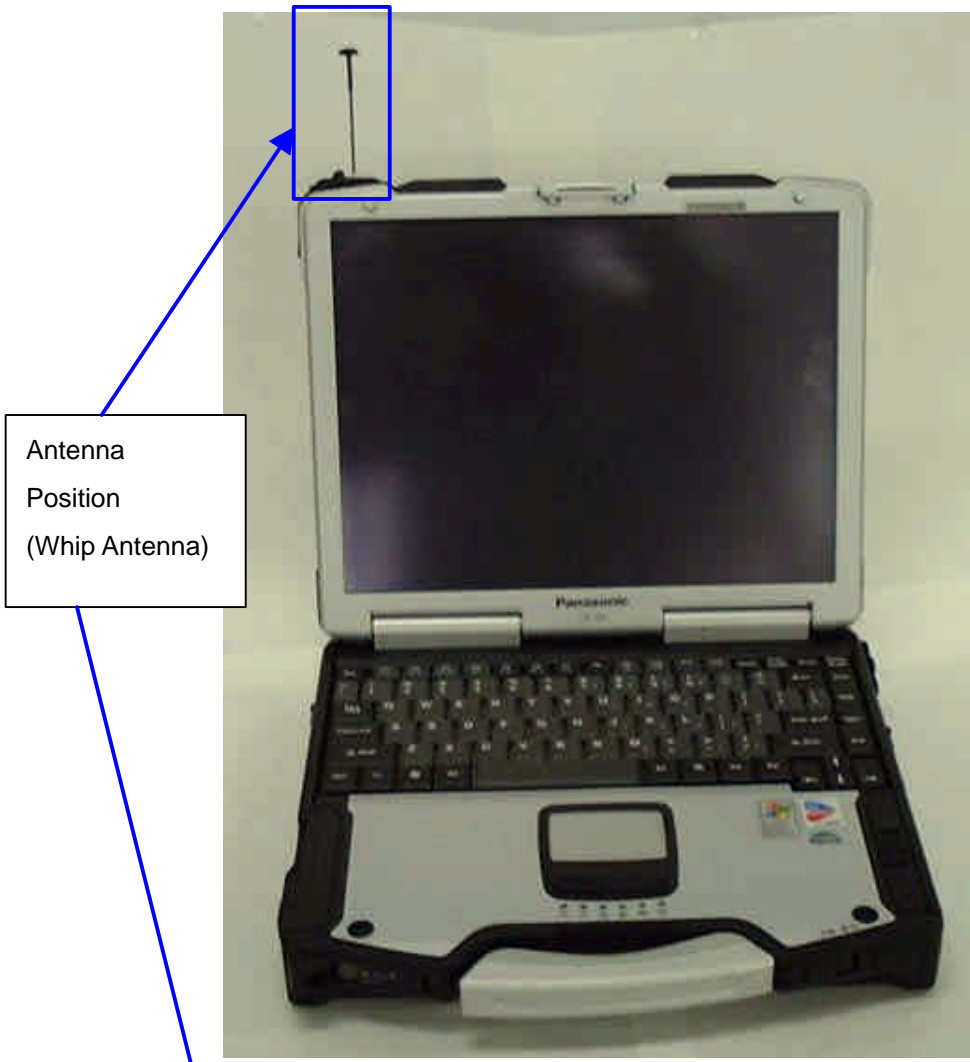
12) Antenna position (Bluetooth)



Bluetooth Antenna



13) Antenna Position (CDMA)



Antenna  
Position  
(Whip Antenna)

Front View



Whip Antenna



Whip Antenna I/F PCB

#### 14) Antenna Specification

WLAN Send & Receive Antenna: (Inverted F type: 1.86dBi max)

WLAN Receive only Antenna: (Inverted F type: 2.86dBi max)

Bluetooth Antenna: (Inverted F type: 1.47dBi max)

CDMA Antenna: (Inverted F type: 2.15dBi max)