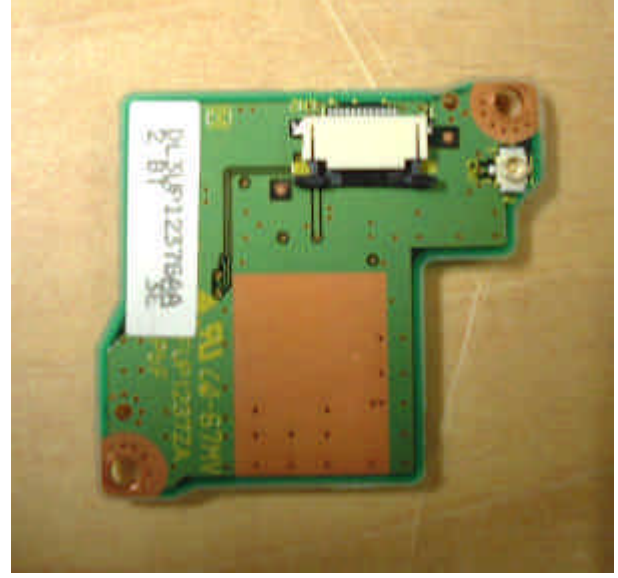


3) Bluetooth Module exterior photo



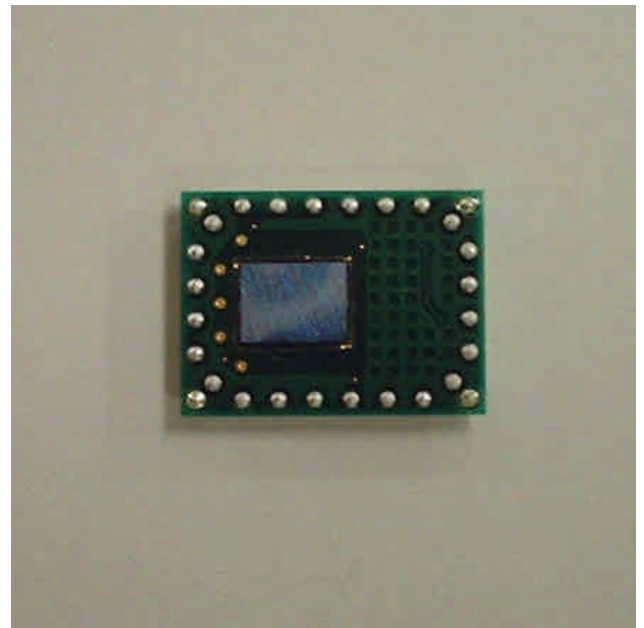
Top View of Bluetooth Module with Daughter-Board



Bottom View of Bluetooth module with Daughter-Board

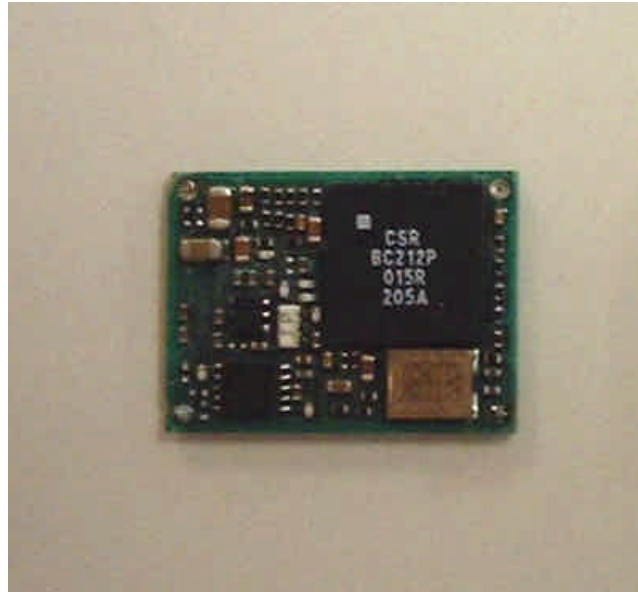


Top View of Bluetooth Module



Bottom View of Bluetooth Module

4) Bluetooth Module Interior photo



Bluetooth Module without shield

5) WLAN Card position



WLAN Card Position

6) WLAN exterior photo

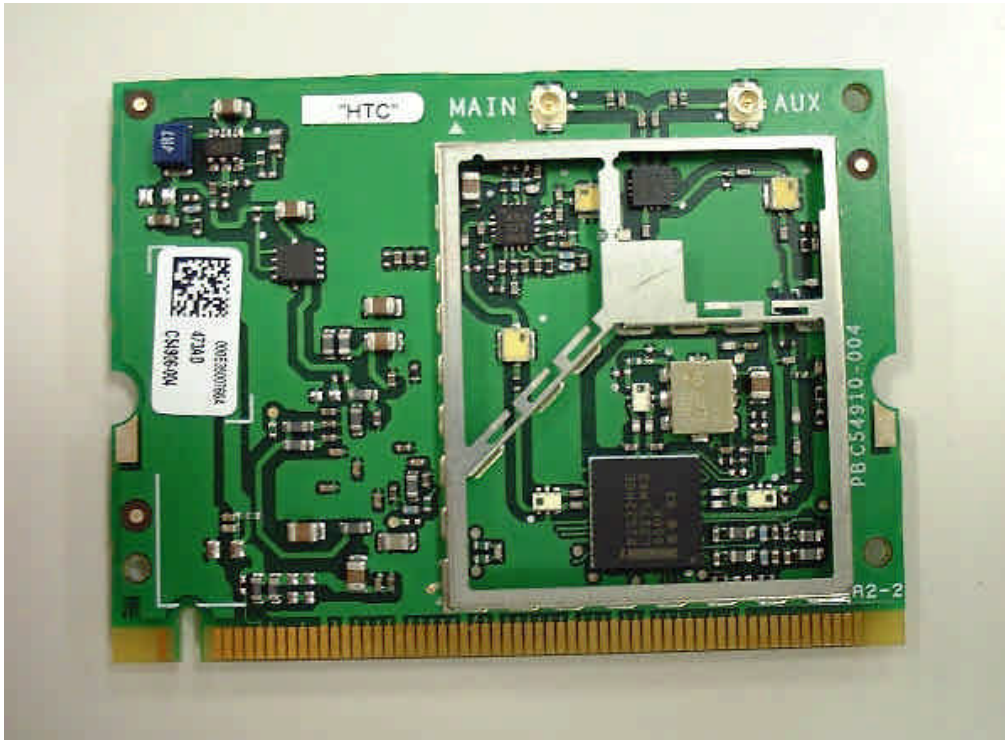


WLAN Top View



WLAN Bottom View

7) WLAN interior photo



WLAN inside Top View



WLAN inside Bottom View

8) GPRS module position



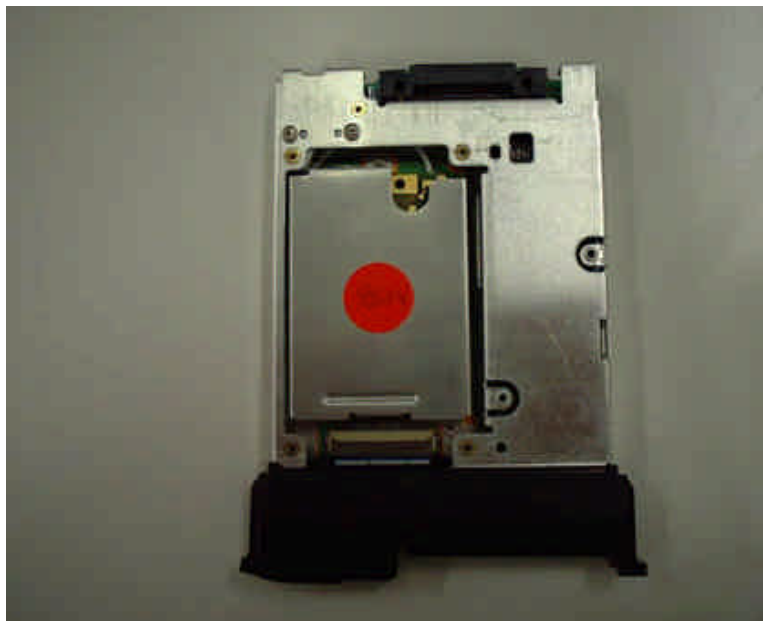
MC46 Module Adapter Position



MC46 Module Adapter Slide Position



MC46 Module Adapter Top View



MC46 Module Adapter Bottom View

9) GPRS Module photo



MC46 Module Top View

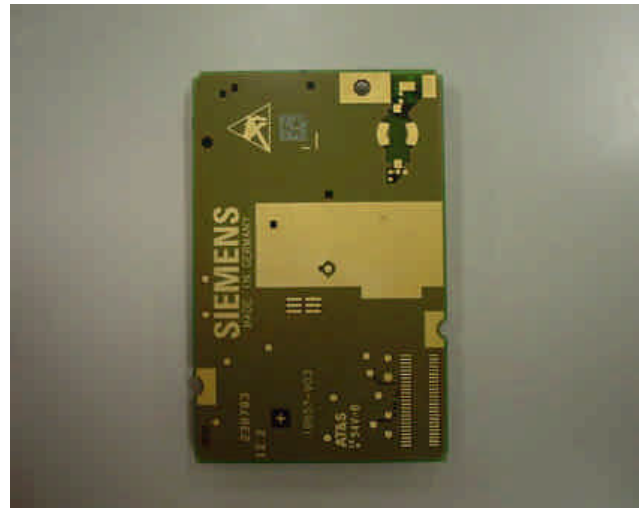
Note: Above Module Label is not final.



MC46 Module Label Final Design

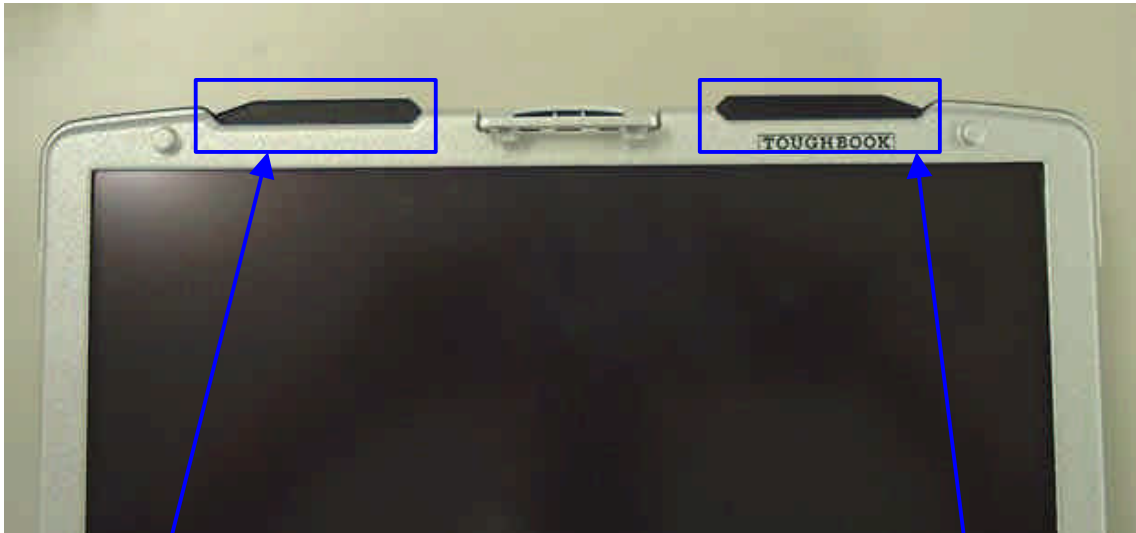


MC46 Module Interior View



MC46 Module Bottom View

10) Antenna position (WLAN)

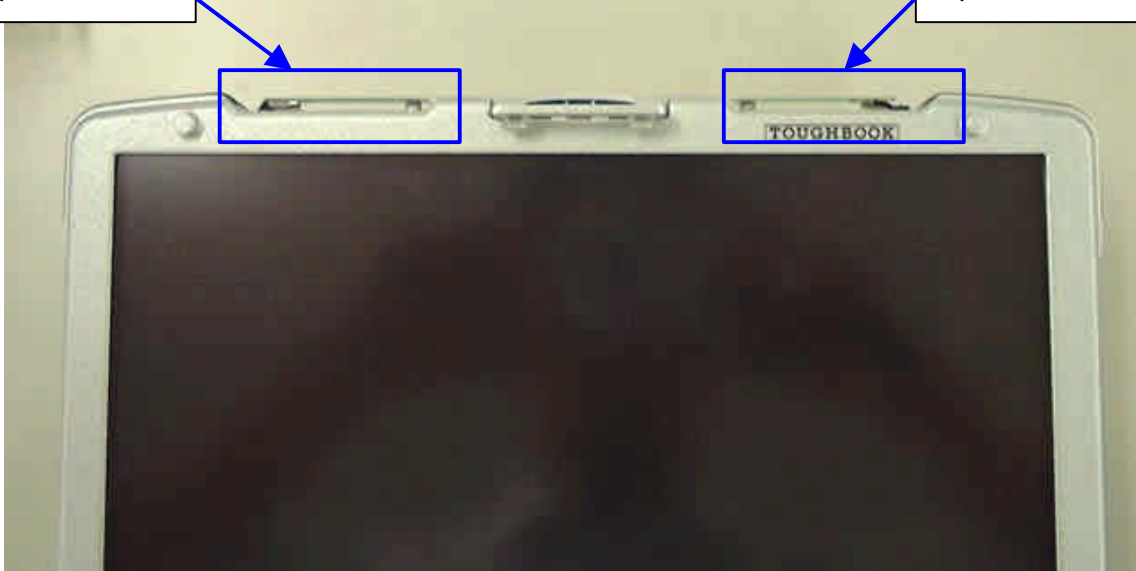


Receive only
Antenna Cover

Send & Receive
Antenna Cover

Antenna Cover
Open

Antenna Cover
Open



11) Antenna Magnified photo (WLAN)



Top View

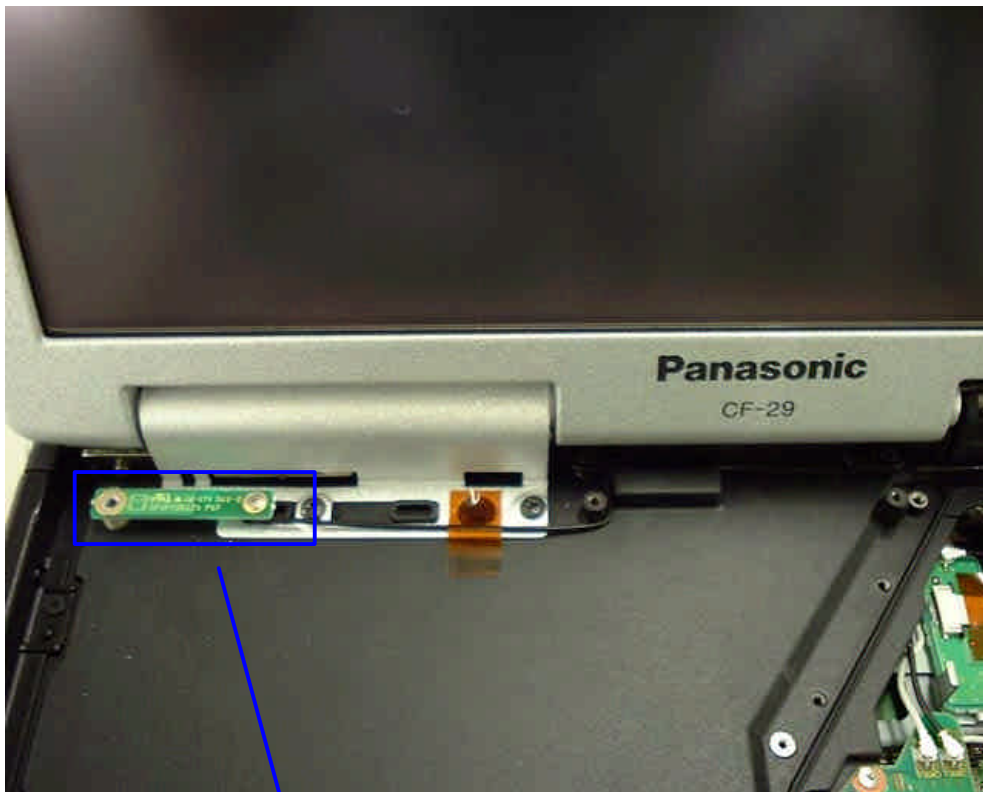


Receive only Antenna View

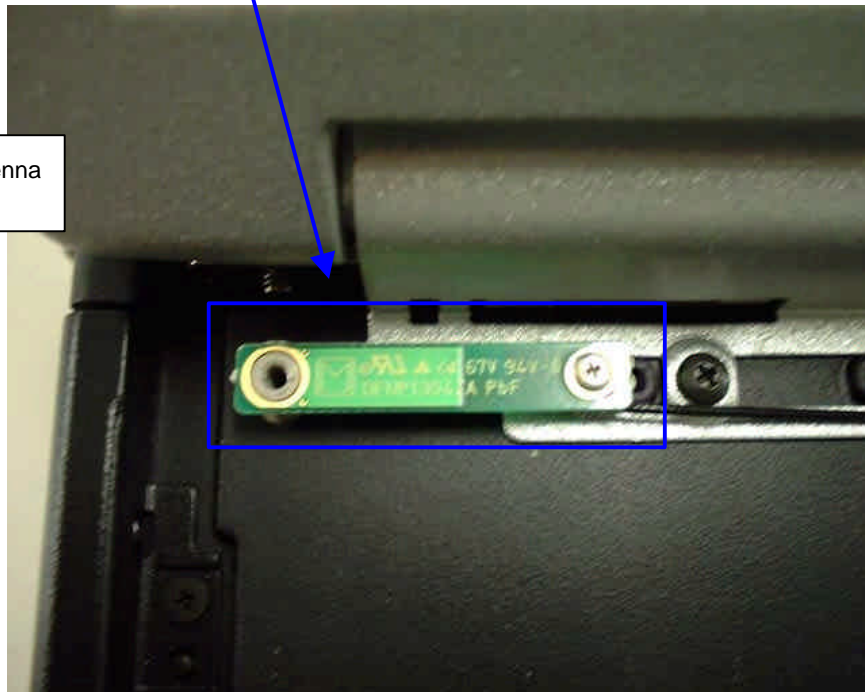


Send & Receive Antenna View

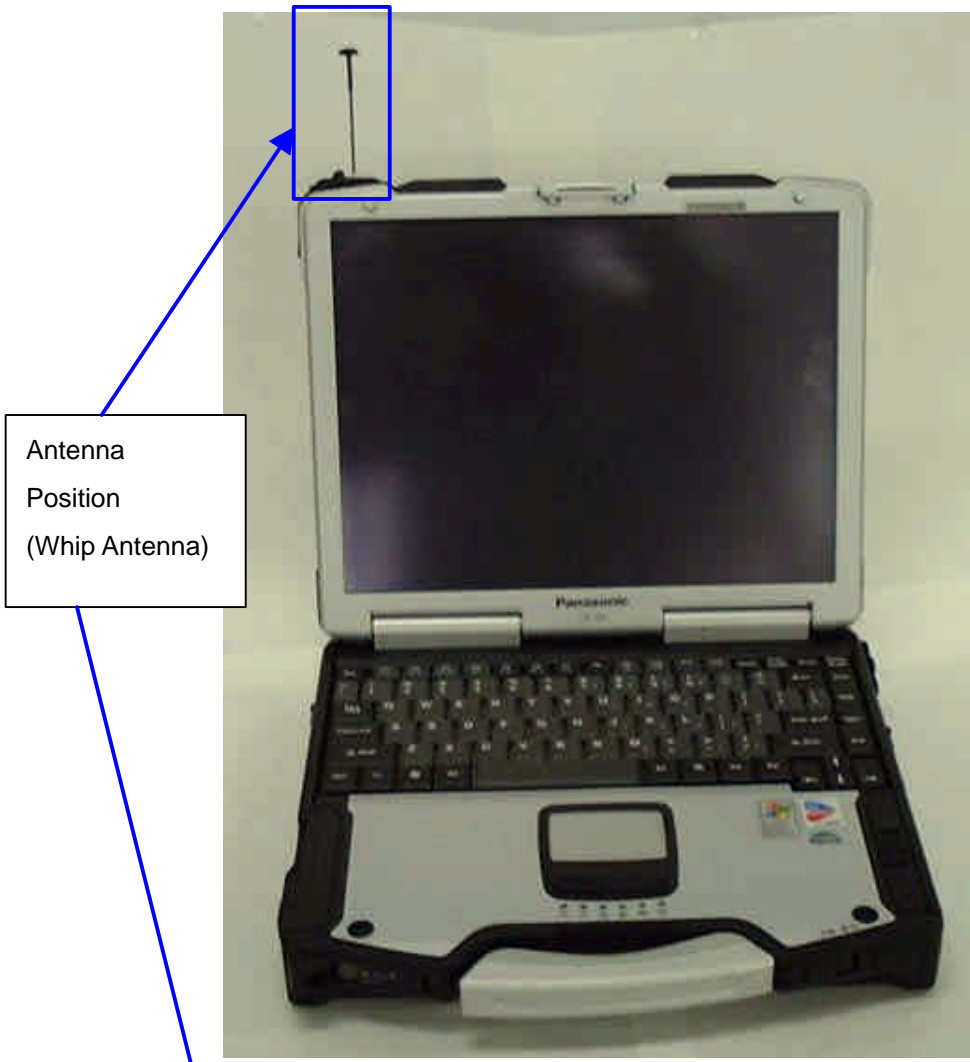
12) Antenna position (Bluetooth)



Bluetooth Antenna



13) Antenna Position (GPRS)



Antenna
Position
(Whip Antenna)

Front View



Whip Antenna



Whip Antenna I/F PCB

14) Antenna Specification

WLAN Send & Receive Antenna: (Inverted F type: 1.86dBi max)

WLAN Receive only Antenna: (Inverted F type: 2.86dBi max)

Bluetooth Antenna: (Inverted F type: 1.47dBi max)

GPRS Antenna: (Inverted F type: 2.15dBi max)