

## **APPENDIX A: SAR TEST DATA**

# PCTEST ENGINEERING LABORATORY, INC.

**DUT: CF -18; Type: Laptop/Tablet PC with WLAN, Bluetooth and GPRS/HSDPA  
Serial: 6HKS31869R**

Communication System: WCDMA850; Frequency: 836.6 MHz; Duty Cycle: 1:1

Medium: 835 Muscle ( $\sigma = 0.94$  mho/m,  $\epsilon_r = 57.01$ ,  $\rho = 1000$  kg/m<sup>3</sup>)

Phantom section: Flat Section; Space: 0.0 cm

Test Date: 01-29-2008; Ambient Temp: 23.7°C; Tissue Temp: 22.4°C

Probe: EX3DV4 - SN3589; ConvF(8.3, 8.3, 8.3); Calibrated: 5/28/2007

Sensor-Surface: 3mm (Mechanical Surface Detection)

Electronics: DAE4 Sn704; Calibrated: 5/25/2007

Phantom: SAM Sub; Type: SAM 4.0; Serial: TP-1403

Measurement SW: DASY4, V4.7 Build 53; Postprocessing SW: SEMCAD, V1.8 Build 172

**Mode: Cellular HSDPA, Laptop position, LCD Flip, Mid.ch**

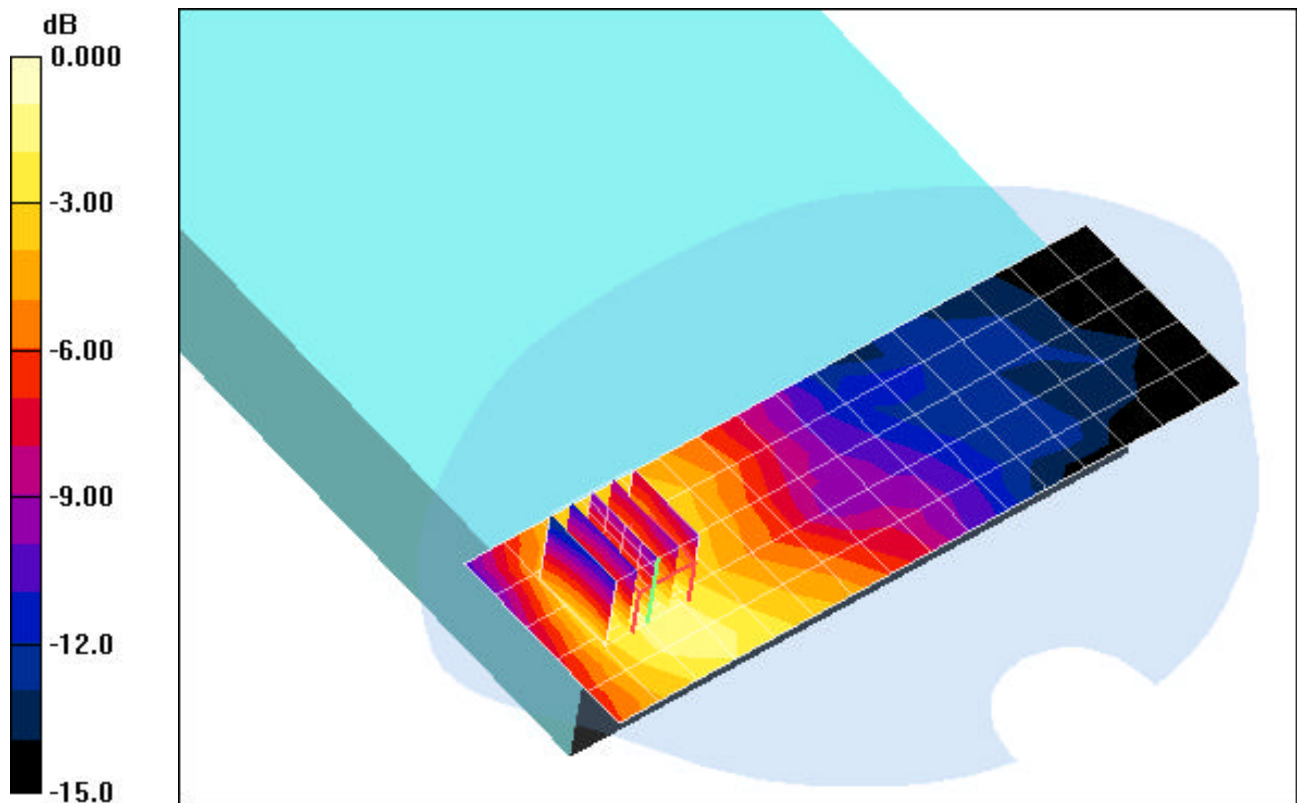
**Area Scan (6x17x1):** Measurement grid: dx=15mm, dy=15mm

**Zoom Scan (5x5x7)/Cube 0:** Measurement grid: dx=8mm, dy=8mm, dz=5mm

Reference Value = 8.61 V/m

Peak SAR (extrapolated) = 0.093 W/kg

**SAR(1 g) = 0.062 mW/g; SAR(10 g) = 0.044 mW/g**



0 dB = 0.100mW/g

# PCTEST ENGINEERING LABORATORY, INC.

**DUT: CF -18; Type: Laptop/Tablet PC with WLAN, Bluetooth and GPRS/HSDPA  
Serial: 6HKS31869R**

Communication System: WCDMA850; Frequency: 836.6 MHz; Duty Cycle: 1:1

Medium: 835 Muscle ( $\sigma = 0.94$  mho/m,  $\epsilon_r = 57.01$ ,  $\rho = 1000$  kg/m<sup>3</sup>)

Phantom section: Flat Section; Space: 0.0 cm

Test Date: 01-29-2008; Ambient Temp: 23.7°C; Tissue Temp: 22.4°C

Probe: EX3DV4 - SN3589; ConvF(8.3, 8.3, 8.3); Calibrated: 5/28/2007

Sensor-Surface: 3mm (Mechanical Surface Detection)

Electronics: DAE4 Sn704; Calibrated: 5/25/2007

Phantom: SAM Sub; Type: SAM 4.0; Serial: TP-1403

Measurement SW: DASY4, V4.7 Build 53; Postprocessing SW: SEMCAD, V1.8 Build 172

**Mode: Cellular HSDPA, Tablet position, Right side, LCD Flip, Mid.ch**

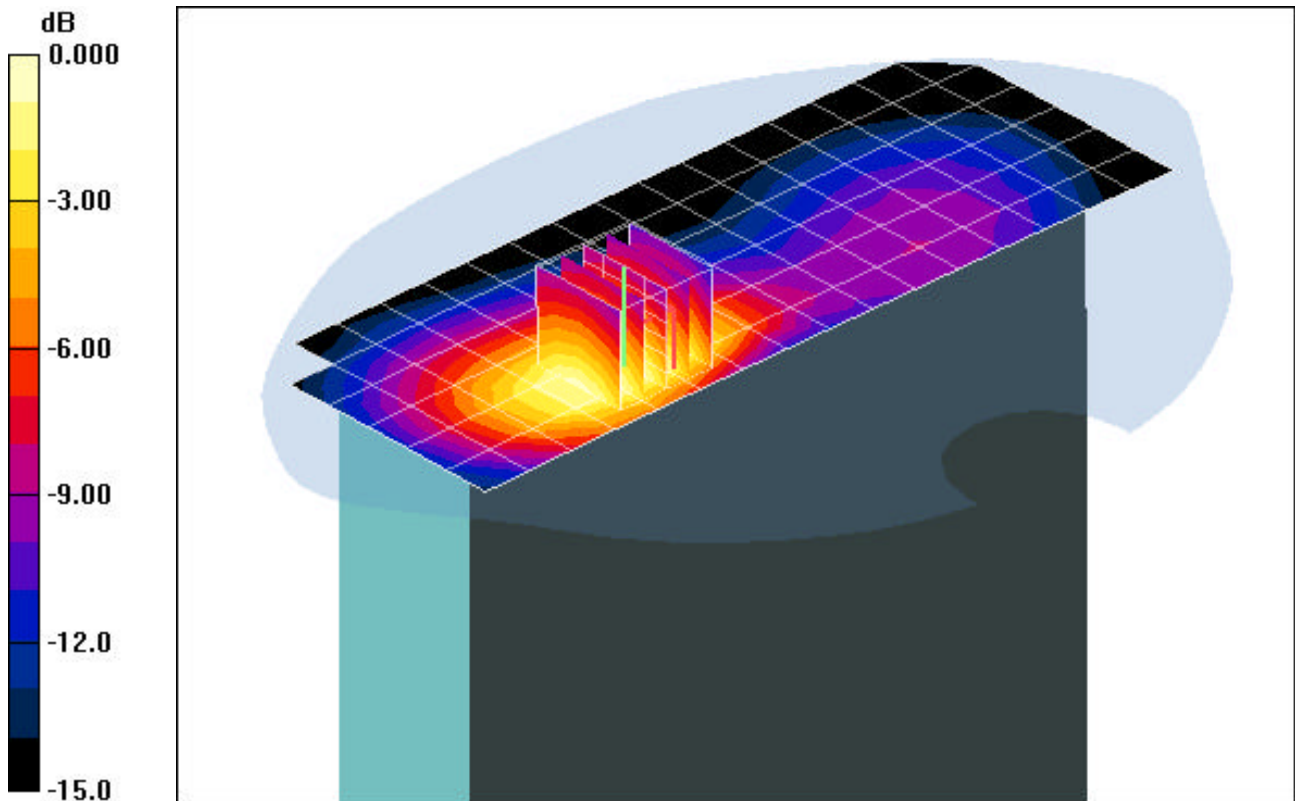
**Area Scan (7x17x1):** Measurement grid: dx=15mm, dy=15mm

**Zoom Scan (5x5x7)/Cube 0:** Measurement grid: dx=8mm, dy=8mm, dz=5mm

Reference Value = 21.8 V/m

Peak SAR (extrapolated) = 0.562 W/kg

**SAR(1 g) = 0.381 mW/g; SAR(10 g) = 0.247 mW/g**



0 dB = 0.400mW/g

# PCTEST ENGINEERING LABORATORY, INC.

**DUT: CF -18; Type: Laptop/Tablet PC with WLAN, Bluetooth and GPRS/HSDPA  
Serial: 6HKS31869R**

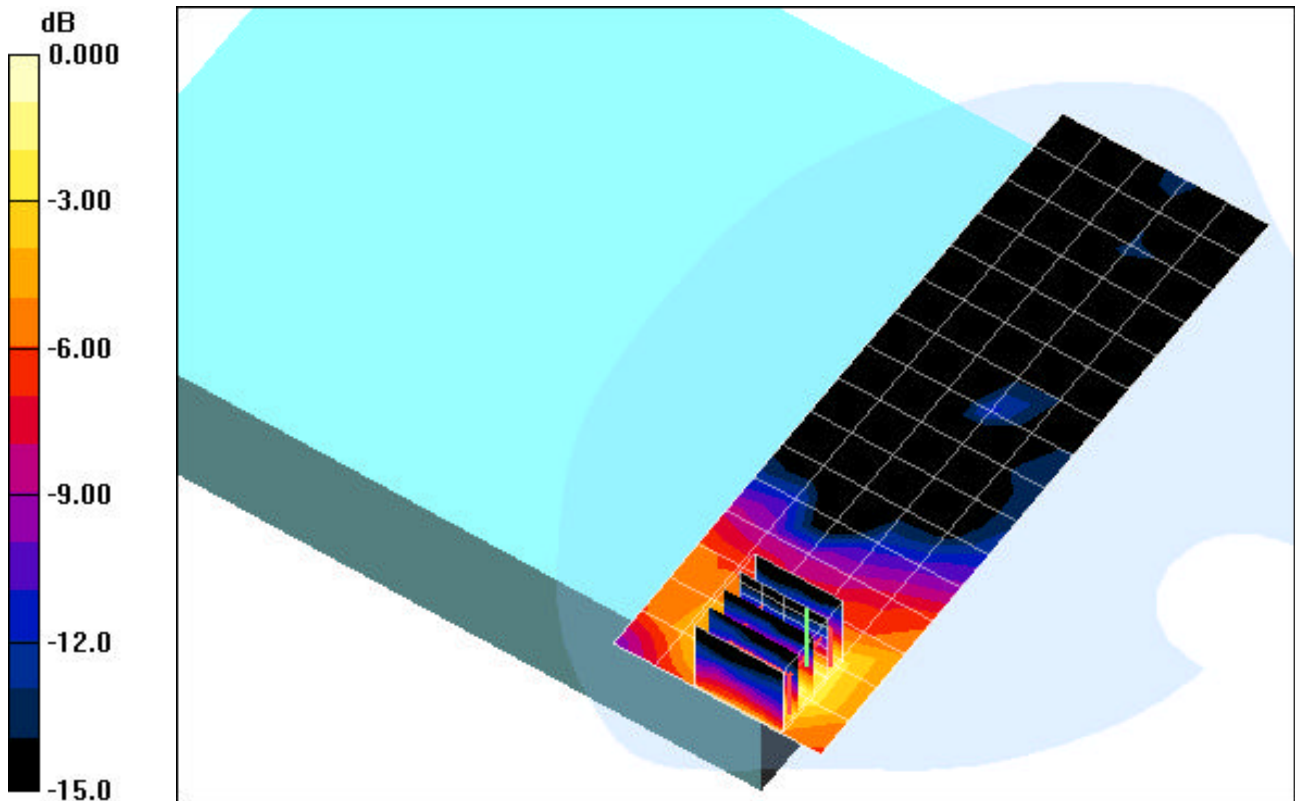
Communication System: WCDMA1900; Frequency: 1880 MHz; Duty Cycle: 1:1  
Medium: 1900 Muscle ( $\sigma = 1.58$  mho/m,  $\epsilon_r = 53.11$ ,  $\rho = 1000$  kg/m<sup>3</sup>)  
Phantom section: Flat Section; Space: 0.0 cm

Test Date: 01-29-2008; Ambient Temp: 23.5°C; Tissue Temp: 21.9°C

Probe: EX3DV4 - SN3589; ConvF(6.79, 6.79, 6.79); Calibrated: 5/28/2007  
Sensor-Surface: 3mm (Mechanical Surface Detection)  
Electronics: DAE4 Sn704; Calibrated: 5/25/2007  
Phantom: SAM Main; Type: SAM 4.0; Serial: TP-1406  
Measurement SW: DASY4, V4.7 Build 53; Postprocessing SW: SEMCAD, V1.8 Build 172

**Mode: PCS HSDPA, Laptopt position, LCD Flip, Mid.ch**

**Area Scan (6x17x1):** Measurement grid: dx=15mm, dy=15mm  
**Zoom Scan (5x5x7)/Cube 0:** Measurement grid: dx=8mm, dy=8mm, dz=5mm  
Reference Value = 7.69 V/m  
Peak SAR (extrapolated) = 0.149 W/kg  
**SAR(1 g) = 0.075 mW/g; SAR(10 g) = 0.040 mW/g**



0 dB = 0.100mW/g

# PCTEST ENGINEERING LABORATORY, INC.

**DUT: CF -18; Type: Laptop/Tablet PC with WLAN, Bluetooth and GPRS/HSDPA  
Serial: 6HKS31869R**

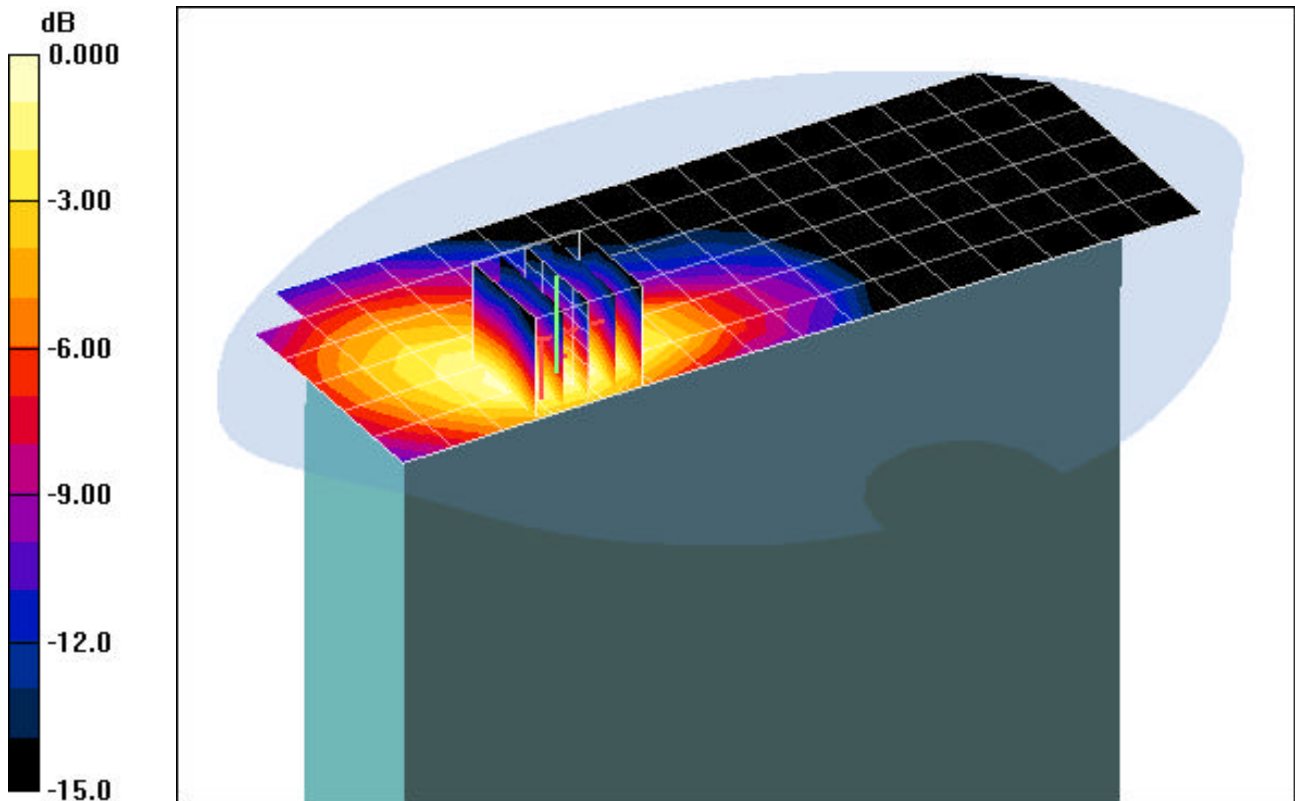
Communication System: WCDMA1900; Frequency: 1880 MHz; Duty Cycle: 1:1  
Medium: 1900 Muscle ( $\sigma = 1.58$  mho/m,  $\epsilon_r = 53.11$ ,  $\rho = 1000$  kg/m<sup>3</sup>)  
Phantom section: Flat Section; Space: 0.0 cm

Test Date: 01-29-2008; Ambient Temp: 23.5°C; Tissue Temp: 21.9°C

Probe: EX3DV4 - SN3589; ConvF(6.79, 6.79, 6.79); Calibrated: 5/28/2007  
Sensor-Surface: 3mm (Mechanical Surface Detection)  
Electronics: DAE4 Sn704; Calibrated: 5/25/2007  
Phantom: SAM Main; Type: SAM 4.0; Serial: TP-1406  
Measurement SW: DASY4, V4.7 Build 53; Postprocessing SW: SEMCAD, V1.8 Build 172

**Mode: PCS HSDPA, Tablet position, Right side, LCD Flip, Mid.ch**

**Area Scan (7x17x1):** Measurement grid: dx=15mm, dy=15mm  
**Zoom Scan (5x5x7)/Cube 0:** Measurement grid: dx=8mm, dy=8mm, dz=5mm  
Reference Value = 12.2 V/m  
Peak SAR (extrapolated) = 0.329 W/kg  
**SAR(1 g) = 0.192 mW/g; SAR(10 g) = 0.109 mW/g**



0 dB = 0.200mW/g

# PCTEST ENGINEERING LABORATORY, INC.

**DUT: CF -18; Type: Laptop/Tablet PC with WLAN, Bluetooth and GPRS/HSDPA  
Serial: 6HKS31869R**

Communication System: GSM850 GPRS; 4 Tx slots; Frequency: 836.6 MHz; Duty Cycle: 1:2

Medium: 835 Muscle ( $\sigma = 0.94$  mho/m,  $\epsilon_r = 57.01$ ,  $\rho = 1000$  kg/m<sup>3</sup>)

Phantom section: Flat Section; Space: 0.0 cm

Test Date: 01-29-2008; Ambient Temp: 23.7°C; Tissue Temp: 22.4°C

Probe: EX3DV4 - SN3589; ConvF(8.3, 8.3, 8.3); Calibrated: 5/28/2007

Sensor-Surface: 3mm (Mechanical Surface Detection)

Electronics: DAE4 Sn704; Calibrated: 5/25/2007

Phantom: SAM Sub; Type: SAM 4.0; Serial: TP-1403

Measurement SW: DASY4, V4.7 Build 53; Postprocessing SW: SEMCAD, V1.8 Build 172

**Mode: Cellular GPRS, Laptop position, LCD Flip, Mid.ch**

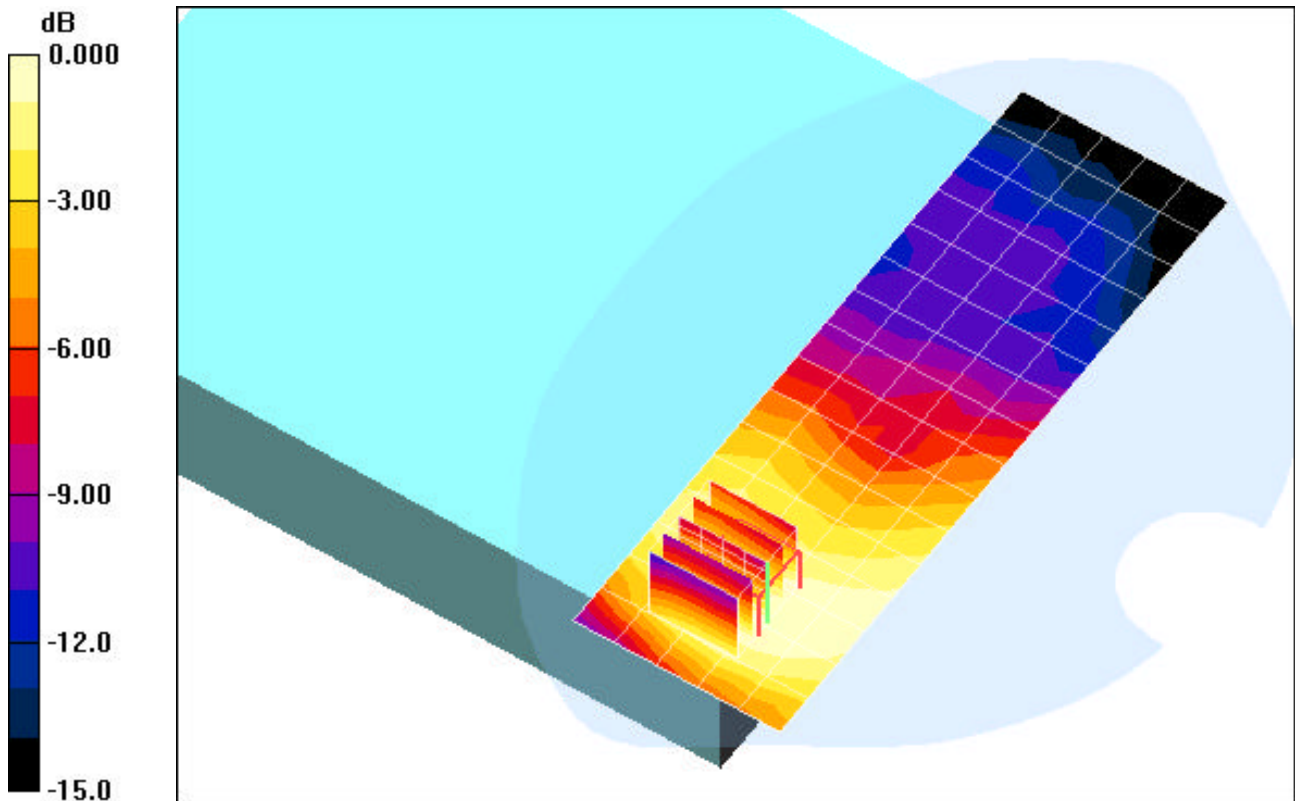
**Area Scan (6x17x1):** Measurement grid: dx=15mm, dy=15mm

**Zoom Scan (5x5x7)/Cube 0:** Measurement grid: dx=8mm, dy=8mm, dz=5mm

Reference Value = 10.3 V/m

Peak SAR (extrapolated) = 0.134 W/kg

**SAR(1 g) = 0.089 mW/g; SAR(10 g) = 0.063 mW/g**



0 dB = 0.100mW/g

# PCTEST ENGINEERING LABORATORY, INC.

**DUT: CF -18; Type: Laptop/Tablet PC with WLAN, Bluetooth and GPRS/HSDPA  
Serial: 6HKS31869R**

Communication System: GSM850 GPRS; 4 Tx slots; Frequency: 836.6 MHz; Duty Cycle: 1:2

Medium: 835 Muscle ( $\sigma = 0.94$  mho/m,  $\epsilon_r = 57.01$ ,  $\rho = 1000$  kg/m<sup>3</sup>)

Phantom section: Flat Section; Space: 0.0 cm

Test Date: 01-29-2008; Ambient Temp: 23.7°C; Tissue Temp: 22.4°C

Probe: EX3DV4 - SN3589; ConvF(8.3, 8.3, 8.3); Calibrated: 5/28/2007

Sensor-Surface: 3mm (Mechanical Surface Detection)

Electronics: DAE4 Sn704; Calibrated: 5/25/2007

Phantom: SAM Sub; Type: SAM 4.0; Serial: TP-1403

Measurement SW: DASY4, V4.7 Build 53; Postprocessing SW: SEMCAD, V1.8 Build 172

**Mode: Cellular GPRS, Tablet position, Right side, LCD Flip, Mid.ch**

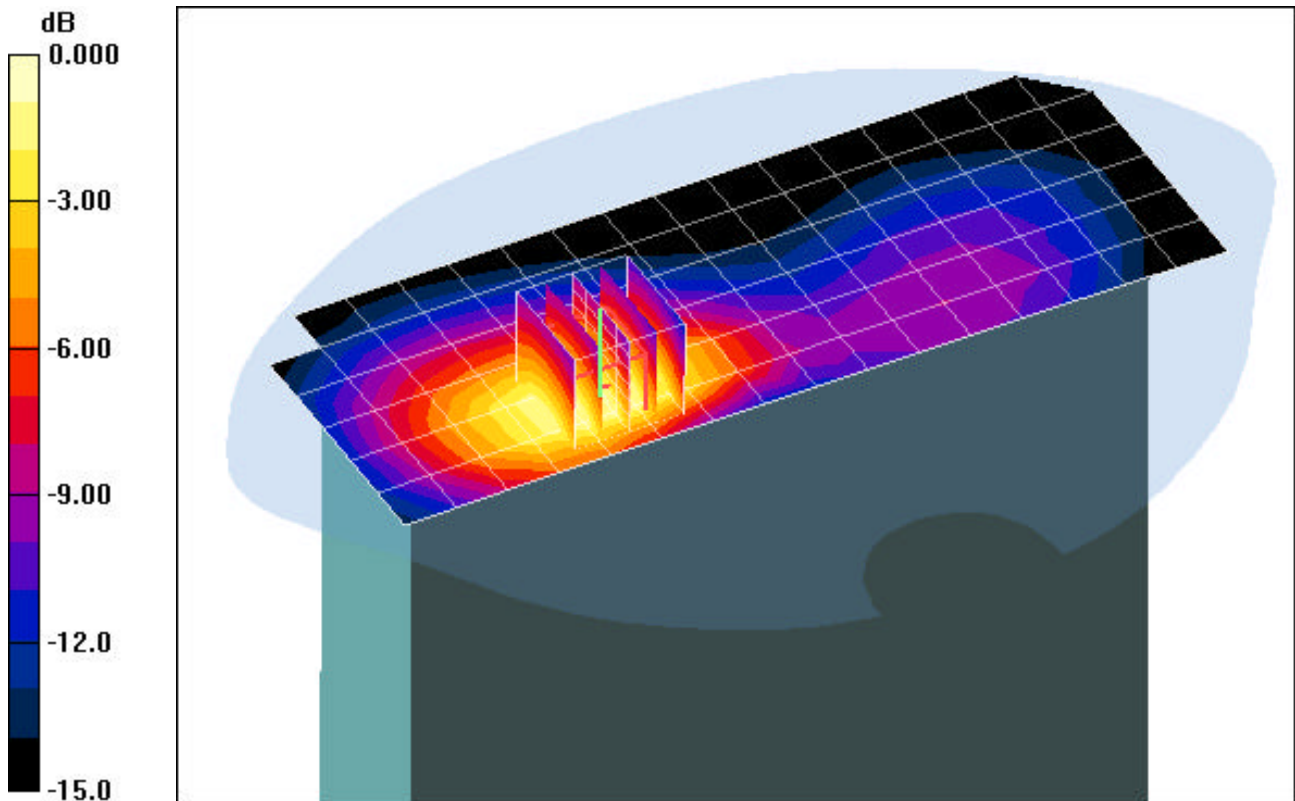
**Area Scan (7x17x1):** Measurement grid: dx=15mm, dy=15mm

**Zoom Scan (5x5x7)/Cube 0:** Measurement grid: dx=8mm, dy=8mm, dz=5mm

Reference Value = 25.5 V/m

Peak SAR (extrapolated) = 0.768 W/kg

**SAR(1 g) = 0.518 mW/g; SAR(10 g) = 0.333 mW/g**



0 dB = 0.600mW/g

# PCTEST ENGINEERING LABORATORY, INC.

**DUT: CF-18; Type: Laptop/Tablet PC with WLAN, Bluetooth and GPRS/HSDPA  
Serial: 6HKS31869R**

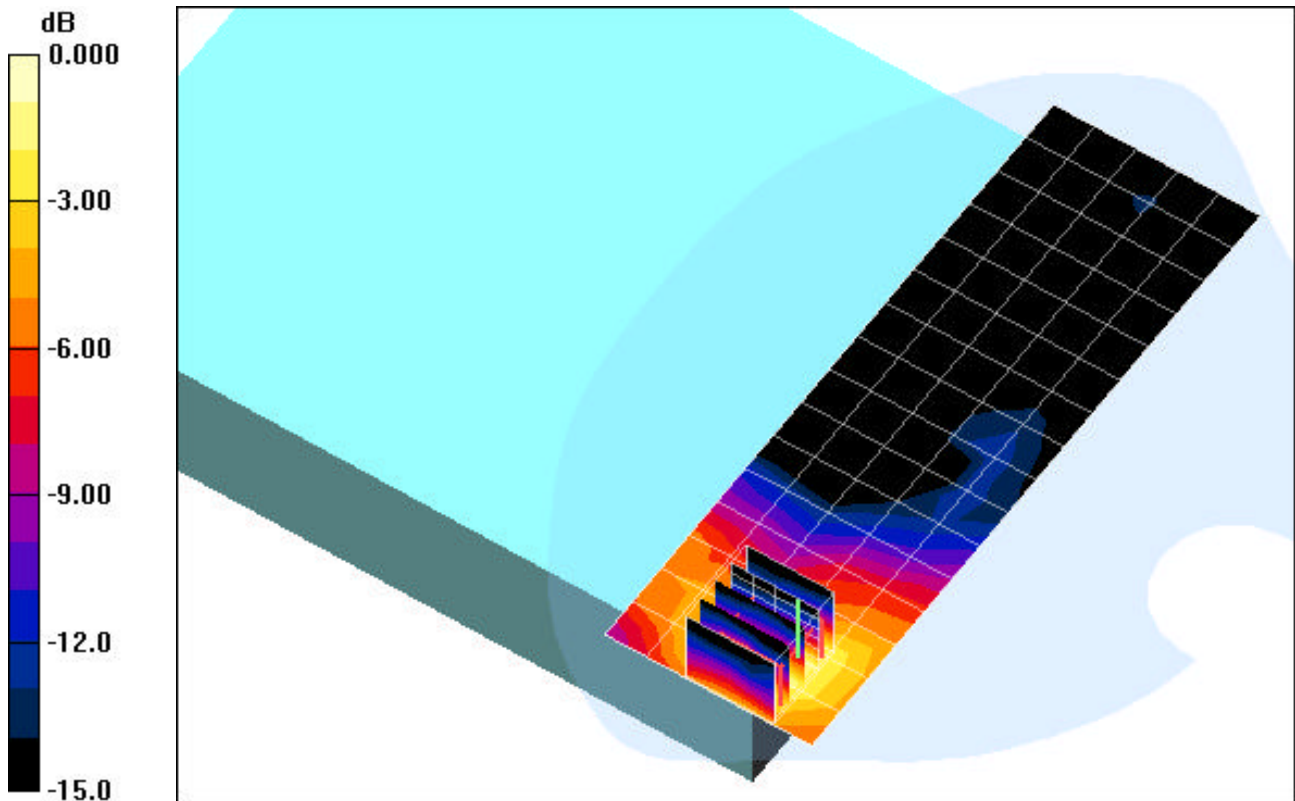
Communication System: GSM1900 GPRS; 4 Tx slots; Frequency: 1880 MHz; Duty Cycle: 1:2  
Medium: 1900 Muscle ( $\sigma = 1.58$  mho/m,  $\epsilon_r = 53.11$ ,  $\rho = 1000$  kg/m<sup>3</sup>)  
Phantom section: Flat Section; Space: 0.0 cm

Test Date: 01-29-2008; Ambient Temp: 23.5°C; Tissue Temp: 21.9°C

Probe: EX3DV4 - SN3589; ConvF(6.79, 6.79, 6.79); Calibrated: 5/28/2007  
Sensor-Surface: 3mm (Mechanical Surface Detection)  
Electronics: DAE4 Sn704; Calibrated: 5/25/2007  
Phantom: SAM Main; Type: SAM 4.0; Serial: TP-1406  
Measurement SW: DASY4, V4.7 Build 53; Postprocessing SW: SEMCAD, V1.8 Build 172

**Mode: PCS GPRS, Laptop position, LCD Flip, Mid.ch**

**Area Scan (6x17x1):** Measurement grid: dx=15mm, dy=15mm  
**Zoom Scan (5x5x7)/Cube 0:** Measurement grid: dx=8mm, dy=8mm, dz=5mm  
Reference Value = 10.9 V/m  
Peak SAR (extrapolated) = 0.286 W/kg  
**SAR(1 g) = 0.149 mW/g; SAR(10 g) = 0.081 mW/g**



0 dB = 0.200mW/g

# PCTEST ENGINEERING LABORATORY, INC.

**DUT: CF -18; Type: Laptop/Tablet PC with WLAN, Bluetooth and GPRS/HSDPA  
Serial: 6HKS31869R**

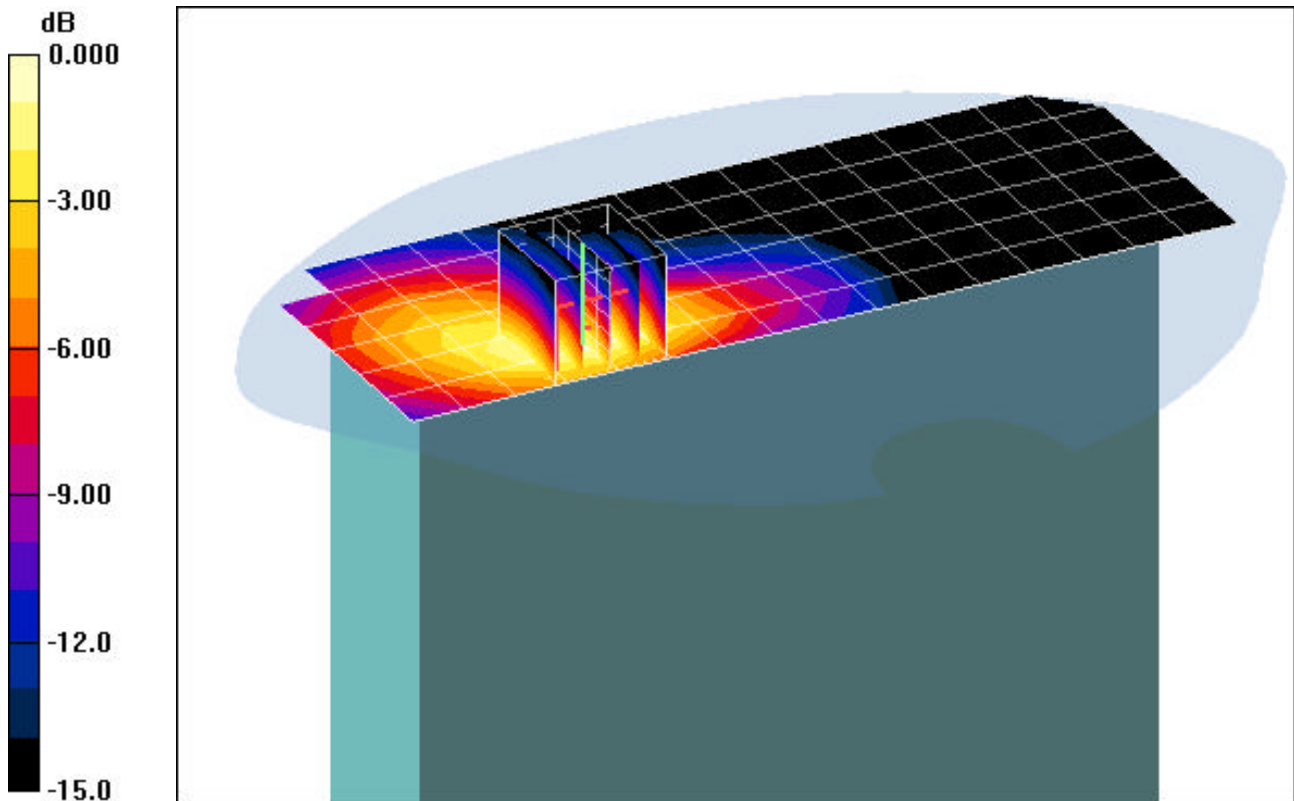
Communication System: GSM1900 GPRS; 4 Tx slots; Frequency: 1880 MHz; Duty Cycle: 1:2  
Medium: 1900 Muscle ( $\sigma = 1.58$  mho/m,  $\epsilon_r = 53.11$ ,  $\rho = 1000$  kg/m<sup>3</sup>)  
Phantom section: Flat Section; Space: 0.0 cm

Test Date: 01-29-2008; Ambient Temp: 23.5°C; Tissue Temp: 21.9°C

Probe: EX3DV4 - SN3589; ConvF(6.79, 6.79, 6.79); Calibrated: 5/28/2007  
Sensor-Surface: 3mm (Mechanical Surface Detection)  
Electronics: DAE4 Sn704; Calibrated: 5/25/2007  
Phantom: SAM Main; Type: SAM 4.0; Serial: TP-1406  
Measurement SW: DASY4, V4.7 Build 53; Postprocessing SW: SEMCAD, V1.8 Build 172

**Mode: PCS GPRS, Tablet position, Right side, LCD Flip, Mid.ch**

**Area Scan (7x17x1):** Measurement grid: dx=15mm, dy=15mm  
**Zoom Scan (5x5x7)/Cube 0:** Measurement grid: dx=8mm, dy=8mm, dz=5mm  
Reference Value = 17.7 V/m  
Peak SAR (extrapolated) = 0.703 W/kg  
**SAR(1 g) = 0.403 mW/g; SAR(10 g) = 0.229 mW/g**



0 dB = 0.500mW/g

# PCTEST ENGINEERING LABORATORY, INC.

**DUT: CF-18; Type: Laptop/Tablet PC with WLAN, Bluetooth and GPRS/HSDPA  
Serial: 6HKS31869R**

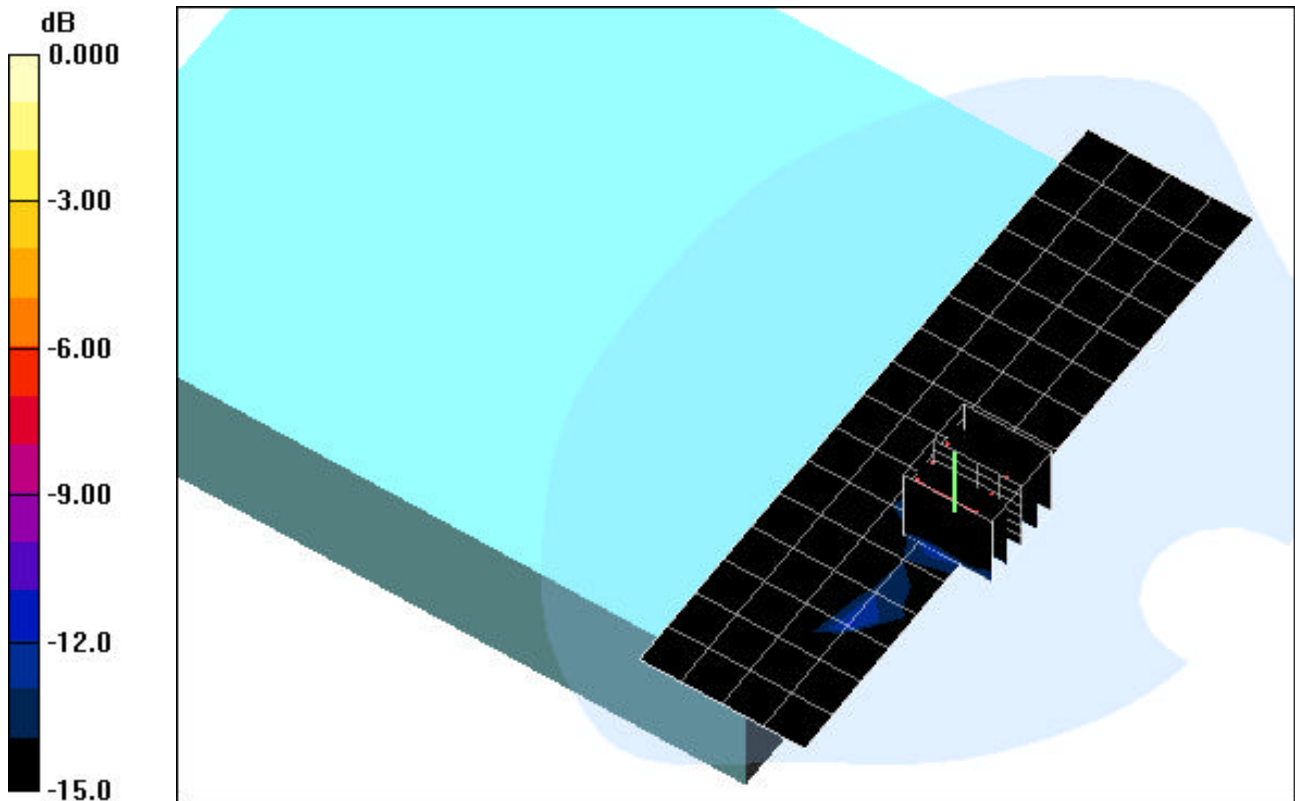
Communication System: Bluetooth; Frequency: 2441 MHz; Duty Cycle: 1:1  
Medium: 2450 Muscle ( $\sigma = 1.89$  mho/m,  $\epsilon_r = 51.63$ ,  $\rho = 1000$  kg/m<sup>3</sup>)  
Phantom section: Flat Section; Space: 0.0 cm

Test Date: 01-25-2008; Ambient Temp: 23.7°C; Tissue Temp: 21.9°C

Probe: EX3DV4 - SN3589; ConvF(6.37, 6.37, 6.37); Calibrated: 5/28/2007  
Sensor-Surface: 3mm (Mechanical Surface Detection)  
Electronics: DAE4 Sn704; Calibrated: 5/25/2007  
Phantom: SAM Main; Type: SAM 4.0; Serial: TP-1406  
Measurement SW: DASY4, V4.7 Build 53; Postprocessing SW: SEMCAD, V1.8 Build 172

**Mode: Bluetooth, Laptop position, LCD Flip, Mid.ch**

**Area Scan (5x17x1):** Measurement grid: dx=15mm, dy=15mm  
**Zoom Scan (5x5x7)/Cube 0:** Measurement grid: dx=8mm, dy=8mm, dz=5mm  
Reference Value = 1.29 V/m  
Peak SAR (extrapolated) = 0.025 W/kg  
**SAR(1 g) = 0.008 mW/g; SAR(10 g) = 0.00303 mW/g**



0 dB = 0.100mW/g

# PCTEST ENGINEERING LABORATORY, INC.

**DUT: CF -18; Type: Laptop/Tablet PC with WLAN, Bluetooth and GPRS/HSDPA  
Serial: 6HKS31869R**

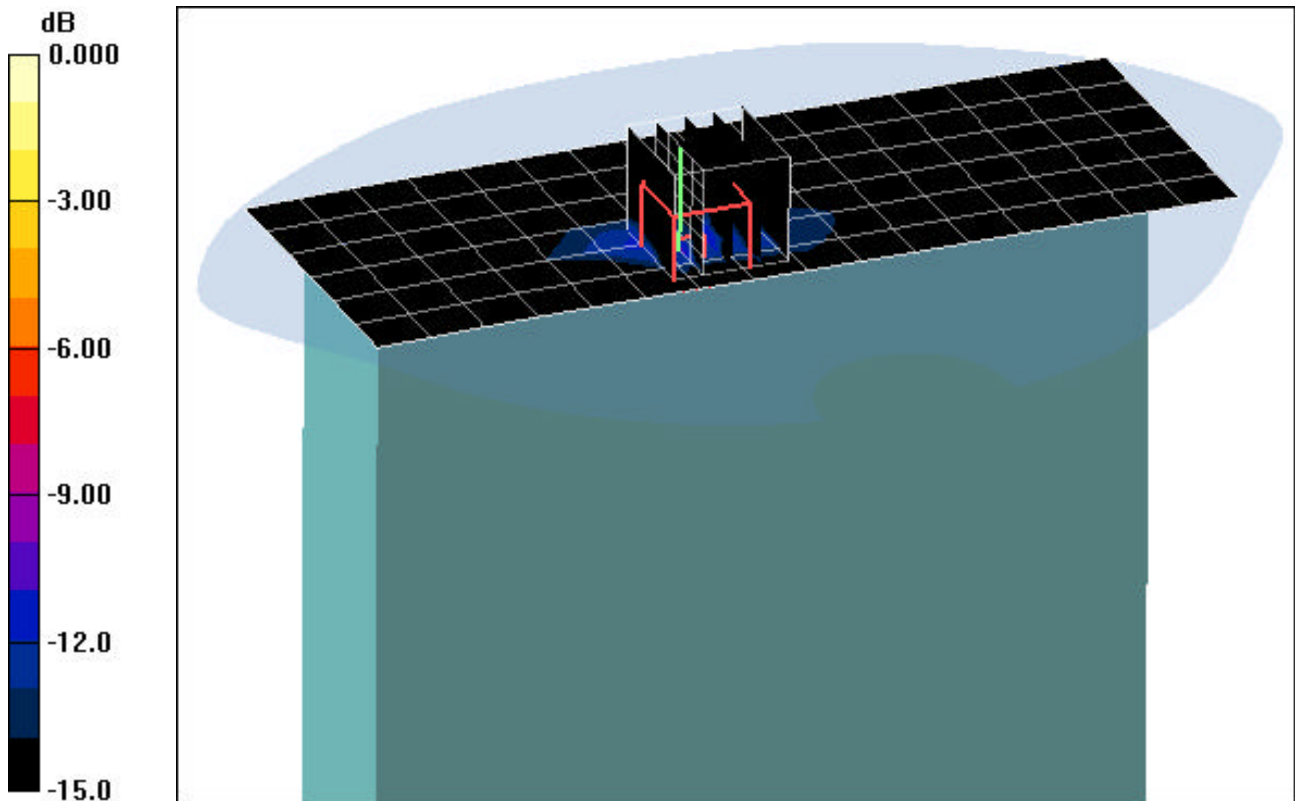
Communication System: Bluetooth; Frequency: 2441 MHz; Duty Cycle: 1:1  
Medium: 2450 Muscle ( $\sigma = 1.89$  mho/m,  $\epsilon_r = 51.63$ ,  $\rho = 1000$  kg/m<sup>3</sup>)  
Phantom section: Flat Section; Space: 0.0 cm

Test Date: 01-25-2008; Ambient Temp: 23.7°C; Tissue Temp: 21.9°C

Probe: EX3DV4 - SN3589; ConvF(6.37, 6.37, 6.37); Calibrated: 5/28/2007  
Sensor-Surface: 3mm (Mechanical Surface Detection)  
Electronics: DAE4 Sn704; Calibrated: 5/25/2007  
Phantom: SAM Main; Type: SAM 4.0; Serial: TP-1406  
Measurement SW: DASY4, V4.7 Build 53; Postprocessing SW: SEMCAD, V1.8 Build 172

**Mode: Bluetooth, Tablet position, Left Side, LCD Flip, Mid.ch**

**Area Scan (7x17x1):** Measurement grid: dx=15mm, dy=15mm  
**Zoom Scan (5x5x7)/Cube 0:** Measurement grid: dx=8mm, dy=8mm, dz=5mm  
Reference Value = 1.67 V/m  
Peak SAR (extrapolated) = 0.015 W/kg  
**SAR(1 g) = 0.007 mW/g; SAR(10 g) = 0.0033 mW/g**



0 dB = 0.100mW/g

# PCTEST ENGINEERING LABORATORY, INC.

**DUT: CF -18; Type: Laptop/Tablet PC with WLAN, Bluetooth and GPRS/HSDPA  
Serial: 6HKS31869R**

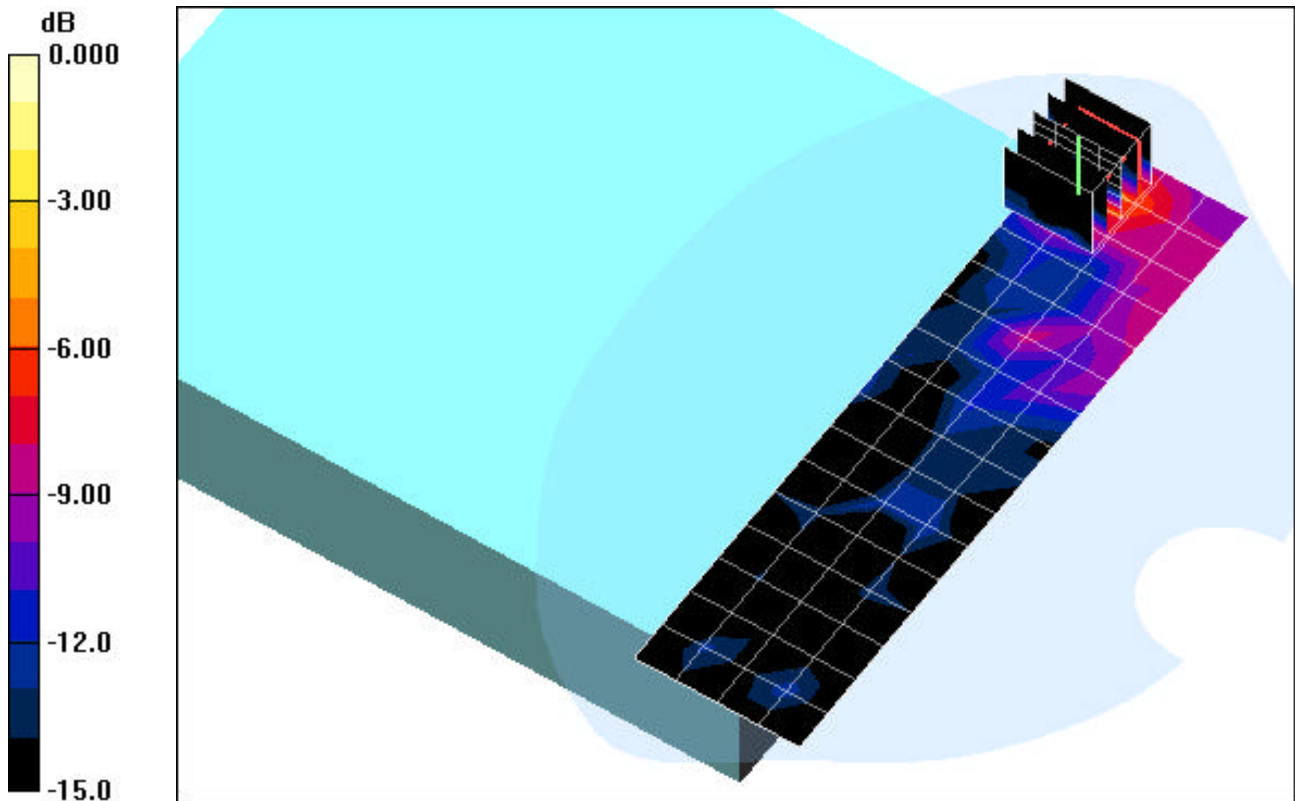
Communication System: IEEE 802.11b; Frequency: 2437 MHz; Duty Cycle: 1:1  
Medium: 2450 Muscle ( $\sigma = 1.89$  mho/m,  $\epsilon_r = 51.63$ ,  $\rho = 1000$  kg/m<sup>3</sup>)  
Phantom section: Flat Section; Space: 0.0 cm

Test Date: 01-24-2008; Ambient Temp: 23.1°C; Tissue Temp: 21.5°C

Probe: EX3DV4 - SN3589; ConvF(6.37, 6.37, 6.37); Calibrated: 5/28/2007  
Sensor-Surface: 3mm (Mechanical Surface Detection)  
Electronics: DAE4 Sn704; Calibrated: 5/25/2007  
Phantom: SAM Main; Type: SAM 4.0; Serial: TP-1406  
Measurement SW: DASY4, V4.7 Build 53; Postprocessing SW: SEMCAD, V1.8 Build 172

**Mode: IEEE 802.11b, Laptop position, LCD Flip, Mid.ch, 1Mbps, Main Ant**

**Area Scan (5x17x1):** Measurement grid: dx=15mm, dy=15mm  
**Zoom Scan (5x5x7)/Cube 0:** Measurement grid: dx=8mm, dy=8mm, dz=5mm  
Reference Value = 4.53 V/m  
Peak SAR (extrapolated) = 0.047 W/kg  
**SAR(1 g) = 0.025 mW/g; SAR(10 g) = 0.012 mW/g**



0 dB = 0.100mW/g

# PCTEST ENGINEERING LABORATORY, INC.

**DUT: CF -18; Type: Laptop/Tablet PC with WLAN, Bluetooth and GPRS/HSDPA  
Serial: 6HKS31869R**

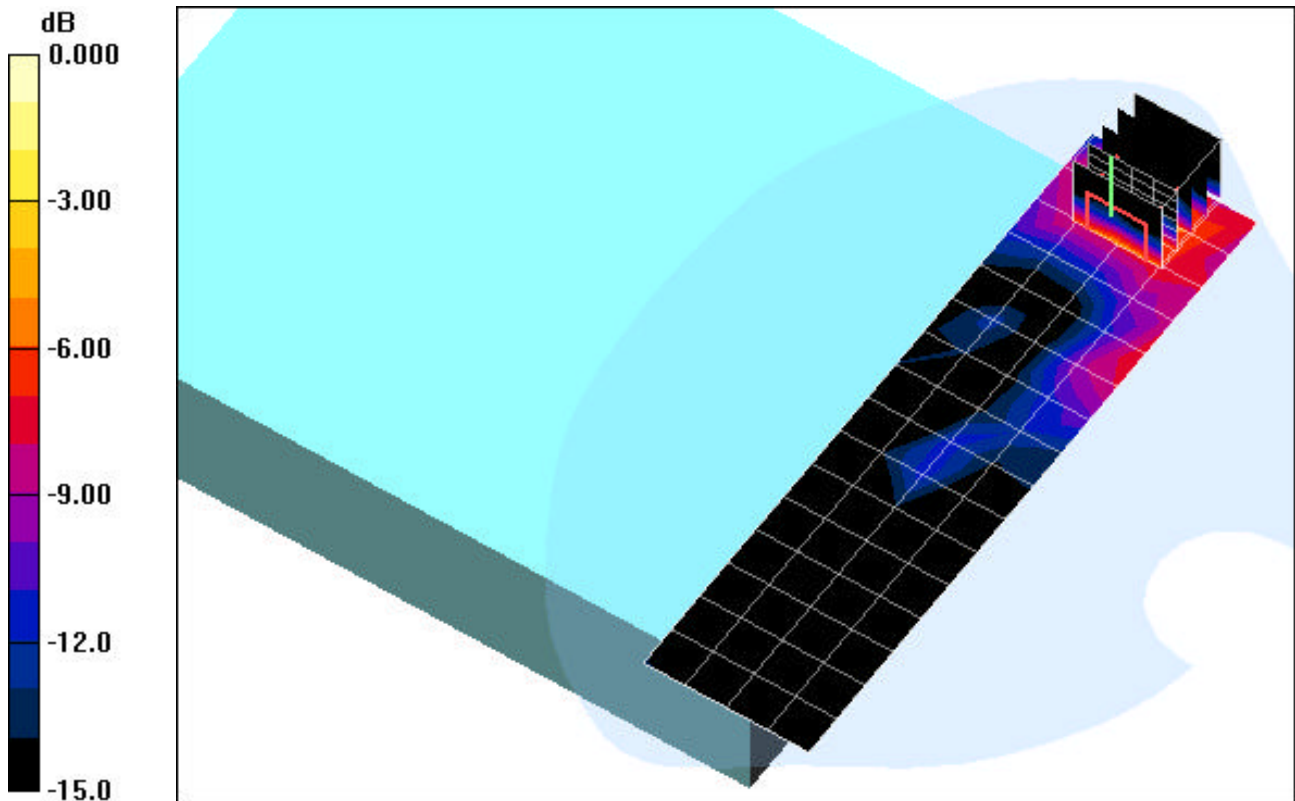
Communication System: IEEE 802.11b; Frequency: 2462 MHz;Duty Cycle: 1:1  
Medium: 2450 Muscle ( $\sigma = 1.89$  mho/m,  $\epsilon_r = 51.63$ ,  $\rho = 1000$  kg/m<sup>3</sup>)  
Phantom section: Flat Section; Space: 0.0 cm

Test Date: 01-25-2008; Ambient Temp: 23.7°C; Tissue Temp: 21.9°C

Probe: EX3DV4 - SN3589; ConvF(6.37, 6.37, 6.37); Calibrated: 5/28/2007  
Sensor-Surface: 3mm (Mechanical Surface Detection)  
Electronics: DAE4 Sn704; Calibrated: 5/25/2007  
Phantom: SAM Main; Type: SAM 4.0; Serial: TP-1406  
Measurement SW: DASY4, V4.7 Build 53; Postprocessing SW: SEMCAD, V1.8 Build 172

**Mode: IEEE 802.11b, Laptop position, LCD Flip, High.ch, 1Mbps, Aux Ant**

**Area Scan (5x17x1):** Measurement grid: dx=15mm, dy=15mm  
**Zoom Scan (5x5x7)/Cube 0:** Measurement grid: dx=8mm, dy=8mm, dz=5mm  
Reference Value = 3.92 V/m  
Peak SAR (extrapolated) = 0.058 W/kg  
**SAR(1 g) = 0.030 mW/g; SAR(10 g) = 0.015 mW/g**



0 dB = 0.100mW/g

# PCTEST ENGINEERING LABORATORY, INC.

**DUT: CF -18; Type: Laptop/Tablet PC with WLAN, Bluetooth and GPRS/HSDPA  
Serial: 6HKS31869R**

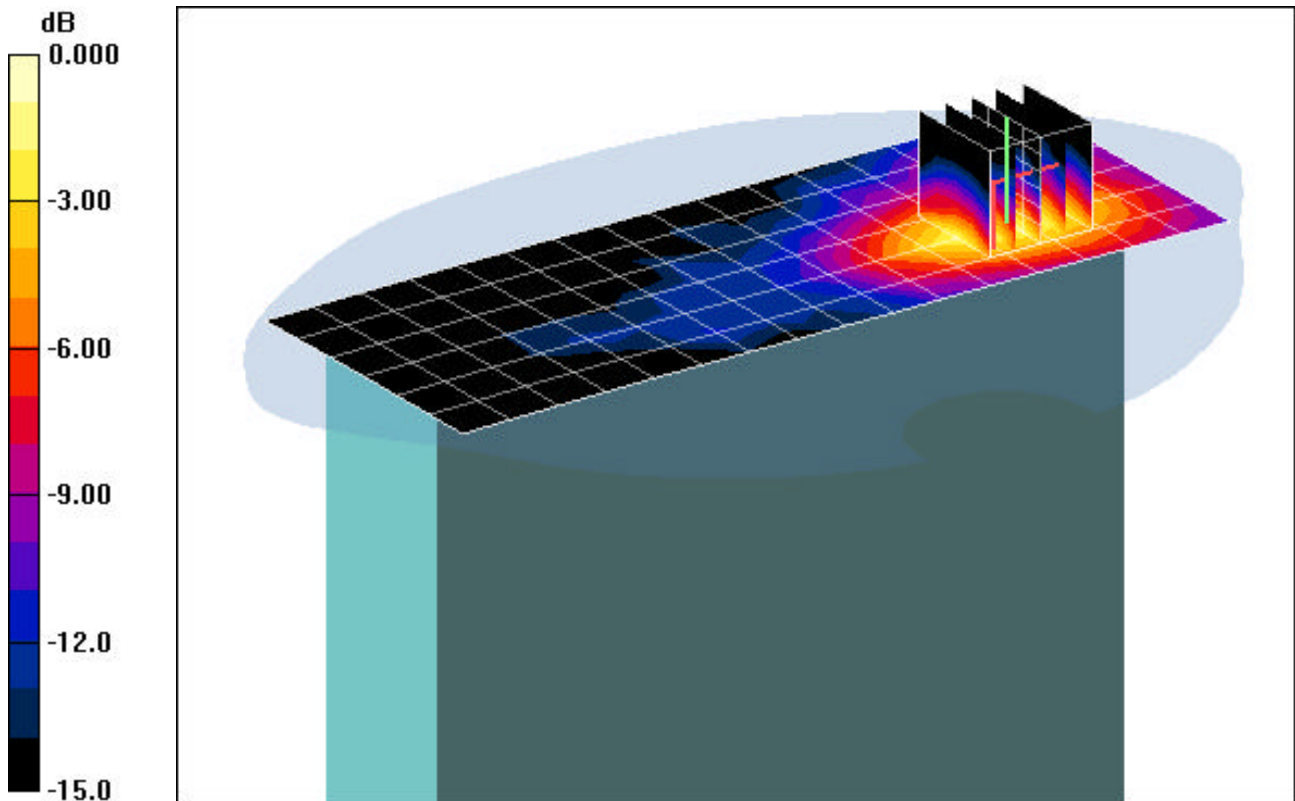
Communication System: IEEE 802.11b; Frequency: 2462 MHz;Duty Cycle: 1:1  
Medium: 2450 Muscle ( $\sigma = 1.89$  mho/m,  $\epsilon_r = 51.63$ ,  $\rho = 1000$  kg/m<sup>3</sup>)  
Phantom section: Flat Section; Space: 0.0 cm

Test Date: 01-25-2008; Ambient Temp: 23.7°C; Tissue Temp: 21.9°C

Probe: EX3DV4 - SN3589; ConvF(6.37, 6.37, 6.37); Calibrated: 5/28/2007  
Sensor-Surface: 3mm (Mechanical Surface Detection)  
Electronics: DAE4 Sn704; Calibrated: 5/25/2007  
Phantom: SAM Main; Type: SAM 4.0; Serial: TP-1406  
Measurement SW: DASY4, V4.7 Build 53; Postprocessing SW: SEMCAD, V1.8 Build 172

**Mode: IEEE 802.11b, Tablet position, Left side, LCD Flip, High.ch, 1Mbps, Main Ant**

**Area Scan (7x17x1):** Measurement grid: dx=15mm, dy=15mm  
**Zoom Scan (5x5x7)/Cube 0:** Measurement grid: dx=8mm, dy=8mm, dz=5mm  
Reference Value = 9.45 V/m  
Peak SAR (extrapolated) = 0.286 W/kg  
**SAR(1 g) = 0.142 mW/g; SAR(10 g) = 0.072 mW/g**



0 dB = 0.200mW/g

# PCTEST ENGINEERING LABORATORY, INC.

**DUT: CF -18; Type: Laptop/Tablet PC with WLAN, Bluetooth and GPRS/HSDPA  
Serial: 6HKS31869R**

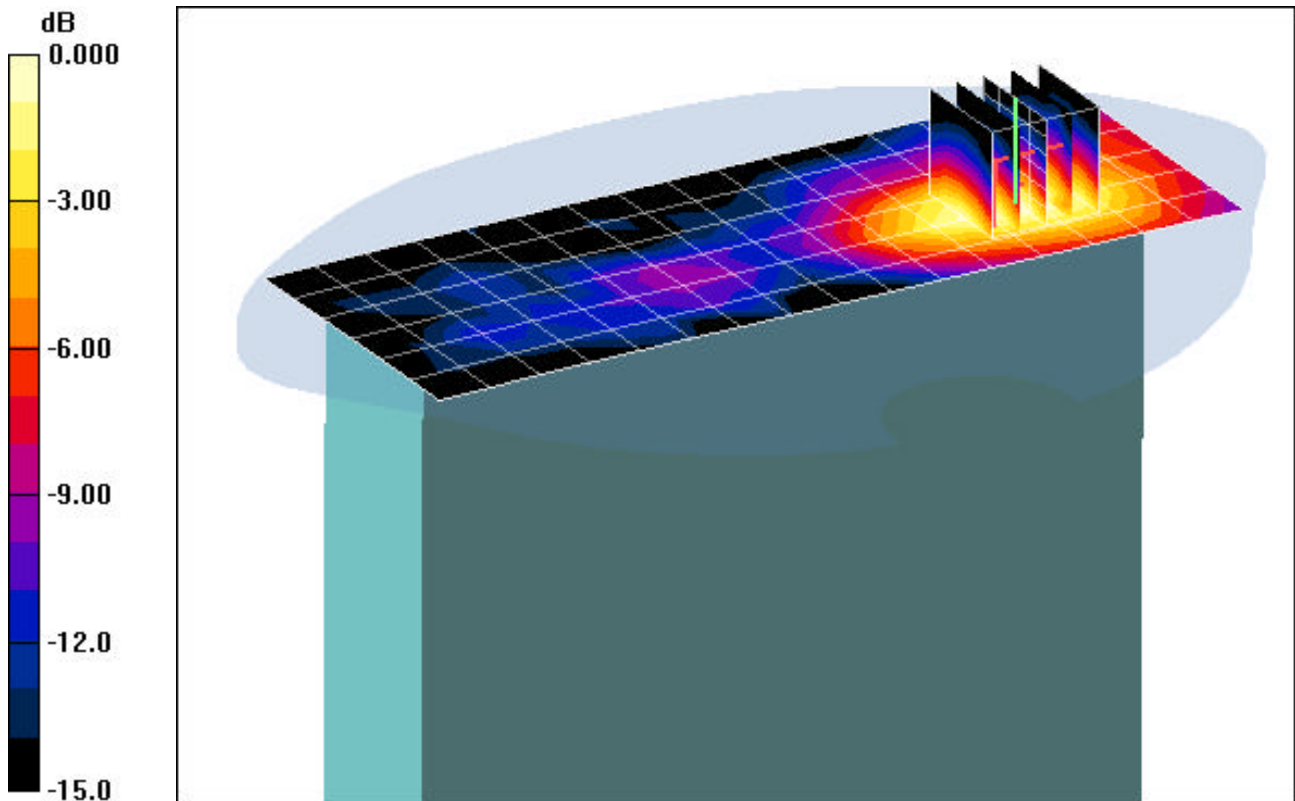
Communication System: IEEE 802.11b; Frequency: 2437 MHz;Duty Cycle: 1:1  
Medium: 2450 Muscle ( $\sigma = 1.89$  mho/m,  $\epsilon_r = 51.63$ ,  $\rho = 1000$  kg/m<sup>3</sup>)  
Phantom section: Flat Section; Space: 0.0 cm

Test Date: 01-25-2008; Ambient Temp: 23.7°C; Tissue Temp: 21.9°C

Probe: EX3DV4 - SN3589; ConvF(6.37, 6.37, 6.37); Calibrated: 5/28/2007  
Sensor-Surface: 3mm (Mechanical Surface Detection)  
Electronics: DAE4 Sn704; Calibrated: 5/25/2007  
Phantom: SAM Main; Type: SAM 4.0; Serial: TP-1406  
Measurement SW: DASY4, V4.7 Build 53; Postprocessing SW: SEMCAD, V1.8 Build 172

**Mode: IEEE 802.11b, Tablet position, Right side, LCD Flip, Mid.ch, 1Mbps, Aux Ant**

**Area Scan (7x17x1):** Measurement grid: dx=15mm, dy=15mm  
**Zoom Scan (5x5x7)/Cube 0:** Measurement grid: dx=8mm, dy=8mm, dz=5mm  
Reference Value = 11.3 V/m  
Peak SAR (extrapolated) = 0.356 W/kg  
**SAR(1 g) = 0.185 mW/g; SAR(10 g) = 0.095 mW/g**



0 dB = 0.200mW/g

# PCTEST ENGINEERING LABORATORY, INC.

**DUT: CF -18; Type: Laptop/Tablet PC with WLAN, Bluetooth and GPRS/HSDPA  
Serial: 6HKS31869R**

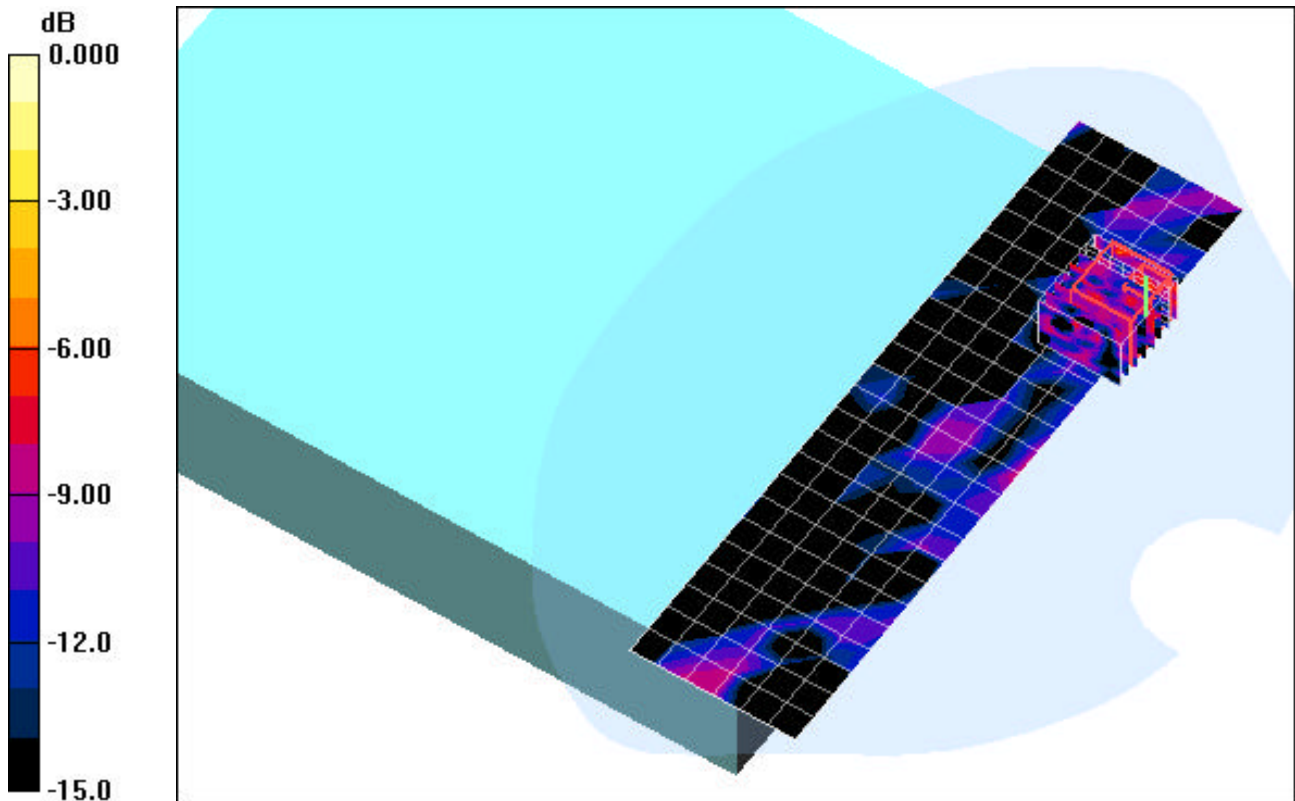
Communication System: IEEE 802.11a 5.2GHz Band; Frequency: 5180 MHz;Duty Cycle: 1:1  
Medium: 5300 Muscle ( $\sigma = 5.35$  mho/m,  $\epsilon_r = 48.28$ ,  $\rho = 1000$  kg/m<sup>3</sup>)  
Phantom section: Flat Section; Space: 0.0 cm

Test Date: 01-27-2008; Ambient Temp: 23.1°C; Tissue Temp: 21.5°C

Probe: EX3DV4 - SN3589; ConvF(4.12, 4.12, 4.12); Calibrated: 5/28/2007  
Sensor-Surface: 3mm (Mechanical Surface Detection)  
Electronics: DAE4 Sn704; Calibrated: 5/25/2007  
Phantom: SAM Main; Type: SAM 4.0; Serial: TP-1406  
Measurement SW: DASY4, V4.7 Build 53; Postprocessing SW: SEMCAD, V1.8 Build 172

**Mode: IEEE 802.11a, Laptop position, LCD Flip, Low.ch, 6Mbps, Main Ant**

**Area Scan (7x25x1):** Measurement grid: dx=10mm, dy=10mm  
**Zoom Scan (8x8x8)/Cube 0:** Measurement grid: dx=4.3mm, dy=4.3mm, dz=3mm  
Reference Value = 0.392 V/m  
Peak SAR (extrapolated) = 0.037 W/kg  
**SAR(1 g) = 0.015 mW/g; SAR(10 g) = 0.0072 mW/g**



0 dB = 0.100mW/g

# PCTEST ENGINEERING LABORATORY, INC.

**DUT: CF -18; Type: Laptop/Tablet PC with WLAN, Bluetooth and GPRS/HSDPA  
Serial: 6HKS31869R**

Communication System: IEEE 802.11a 5.2GHz Band; Frequency: 5240 MHz; Duty Cycle: 1:1  
Medium: 5300 Muscle ( $\sigma = 5.35$  mho/m,  $\epsilon_r = 48.28$ ,  $\rho = 1000$  kg/m<sup>3</sup>)  
Phantom section: Flat Section; Space: 0.0 cm

Test Date: 01-28-2008; Ambient Temp: 23.5°C; Tissue Temp: 21.8°C

Probe: EX3DV4 - SN3589; ConvF(4.12, 4.12, 4.12); Calibrated: 5/28/2007  
Sensor-Surface: 3mm (Mechanical Surface Detection)  
Electronics: DAE4 Sn704; Calibrated: 5/25/2007  
Phantom: SAM Main; Type: SAM 4.0; Serial: TP-1406  
Measurement SW: DASY4, V4.7 Build 53; Postprocessing SW: SEMCAD, V1.8 Build 172

**Mode: IEEE 802.11a, Laptop position, LCD Flip, High.ch, 6Mbps, Aux Ant**

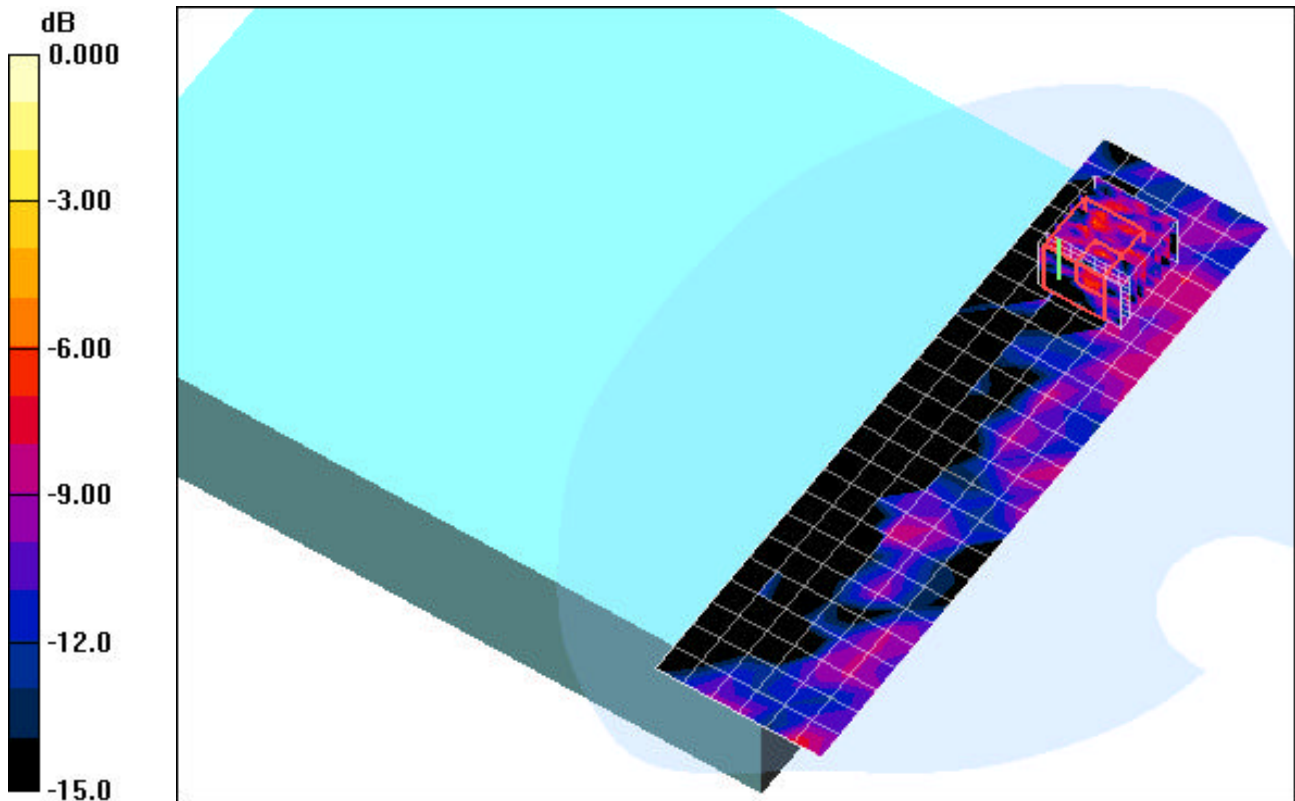
**Area Scan (7x25x1):** Measurement grid: dx=10mm, dy=10mm

**Zoom Scan (8x8x8)/Cube 0:** Measurement grid: dx=4.3mm, dy=4.3mm, dz=3mm

Reference Value = 1.39 V/m

Peak SAR (extrapolated) = 0.046 W/kg

SAR(1 g) = 0.005 mW/g; SAR(10 g) = 0.00148 mW/g



0 dB = 0.100mW/g

# PCTEST ENGINEERING LABORATORY, INC.

**DUT: CF -18; Type: Laptop/Tablet PC with WLAN, Bluetooth and GPRS/HSDPA  
Serial: 6HKS31869R**

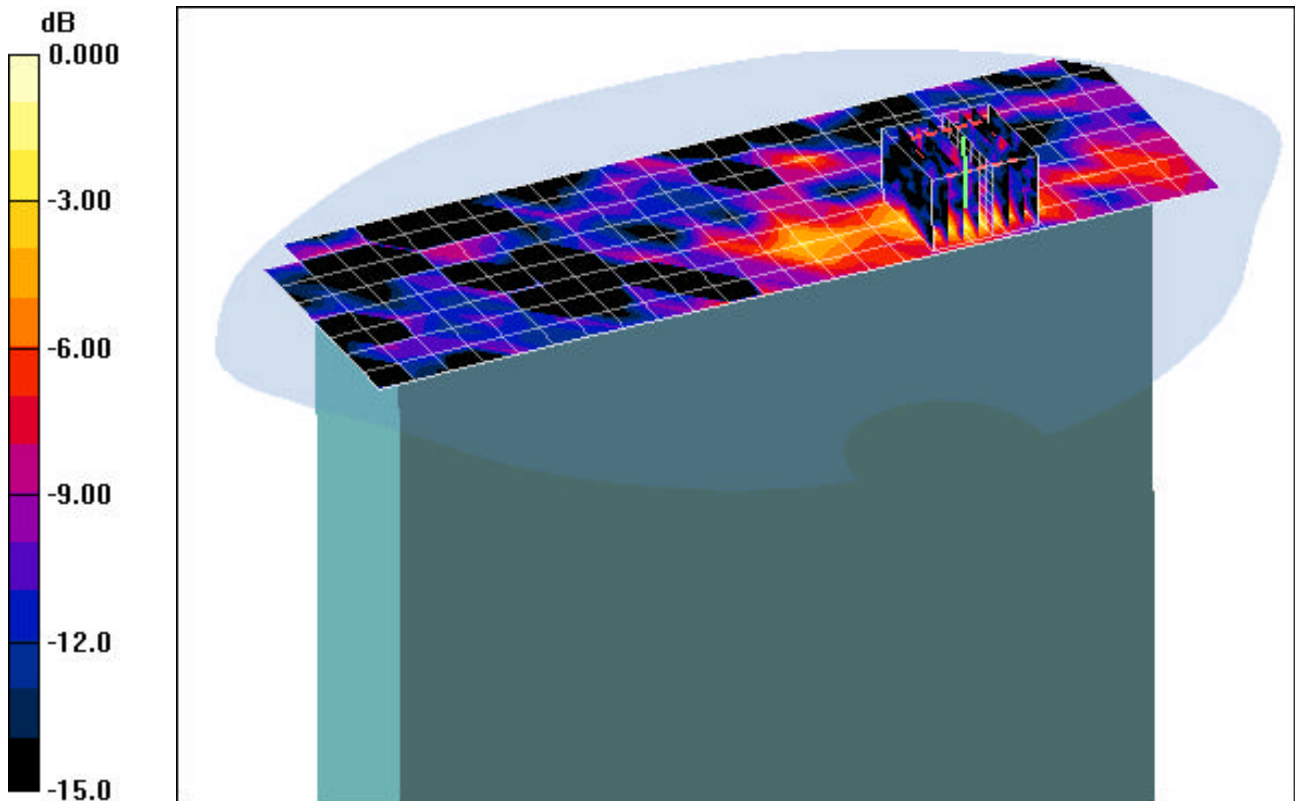
Communication System: IEEE 802.11a 5.2GHz Band; Frequency: 5180 MHz;Duty Cycle: 1:1  
Medium: 5300 Muscle ( $\sigma = 5.35$  mho/m,  $\epsilon_r = 48.28$ ,  $\rho = 1000$  kg/m<sup>3</sup>)  
Phantom section: Flat Section; Space: 0.0 cm

Test Date: 01-26-2008; Ambient Temp: 23.4°C; Tissue Temp: 21.6°C

Probe: EX3DV4 - SN3589; ConvF(4.12, 4.12, 4.12); Calibrated: 5/28/2007  
Sensor-Surface: 3mm (Mechanical Surface Detection)  
Electronics: DAE4 Sn704; Calibrated: 5/25/2007  
Phantom: SAM Main; Type: SAM 4.0; Serial: TP-1406  
Measurement SW: DASY4, V4.7 Build 53; Postprocessing SW: SEMCAD, V1.8 Build 172

**Mode: IEEE 802.11a, Tablet position, Left side, LCD Flip, Low.ch, 6Mbps, Main Ant**

**Area Scan (9x25x1):** Measurement grid: dx=10mm, dy=10mm  
**Zoom Scan (8x8x8)/Cube 0:** Measurement grid: dx=4.3mm, dy=4.3mm, dz=3mm  
Reference Value = 5.08 V/m  
Peak SAR (extrapolated) = 0.232 W/kg  
**SAR(1 g) = 0.079 mW/g; SAR(10 g) = 0.028 mW/g**



0 dB = 0.100mW/g

# PCTEST ENGINEERING LABORATORY, INC.

**DUT: CF -18; Type: Laptop/Tablet PC with WLAN, Bluetooth and GPRS/HSDPA  
Serial: 6HKS31869R**

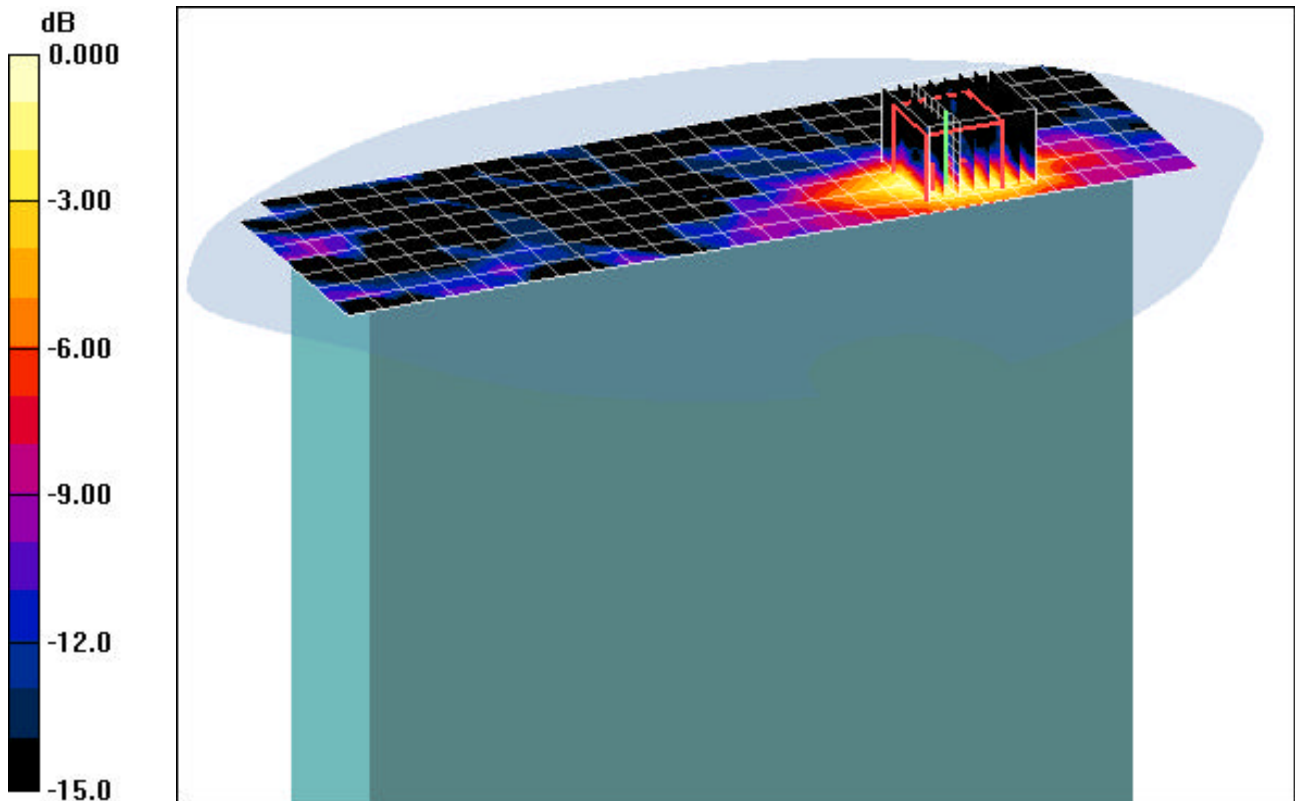
Communication System: IEEE 802.11a 5.2GHz Band; Frequency: 5240 MHz;Duty Cycle: 1:1  
Medium: 5300 Muscle ( $\sigma = 5.35$  mho/m,  $\epsilon_r = 48.28$ ,  $\rho = 1000$  kg/m<sup>3</sup>)  
Phantom section: Flat Section; Space: 0.0 cm

Test Date: 01-26-2008; Ambient Temp: 23.4°C; Tissue Temp: 21.6°C

Probe: EX3DV4 - SN3589; ConvF(4.12, 4.12, 4.12); Calibrated: 5/28/2007  
Sensor-Surface: 3mm (Mechanical Surface Detection)  
Electronics: DAE4 Sn704; Calibrated: 5/25/2007  
Phantom: SAM Main; Type: SAM 4.0; Serial: TP-1406  
Measurement SW: DASY4, V4.7 Build 53; Postprocessing SW: SEMCAD, V1.8 Build 172

**Mode: IEEE 802.11a, Tablet position, Right side, LCD Flip, High.ch, 6Mbps, Aux Ant**

**Area Scan (9x25x1):** Measurement grid: dx=10mm, dy=10mm  
**Zoom Scan (8x8x8)/Cube 0:** Measurement grid: dx=4.3mm, dy=4.3mm, dz=3mm  
Reference Value = 6.26 V/m  
Peak SAR (extrapolated) = 0.427 W/kg  
**SAR(1 g) = 0.138 mW/g; SAR(10 g) = 0.048 mW/g**



0 dB = 0.200mW/g

# PCTEST ENGINEERING LABORATORY, INC.

**DUT: CF-18; Type: Laptop/Tablet PC with WLAN, Bluetooth and GPRS/HSDPA  
Serial: 6HKS31869R**

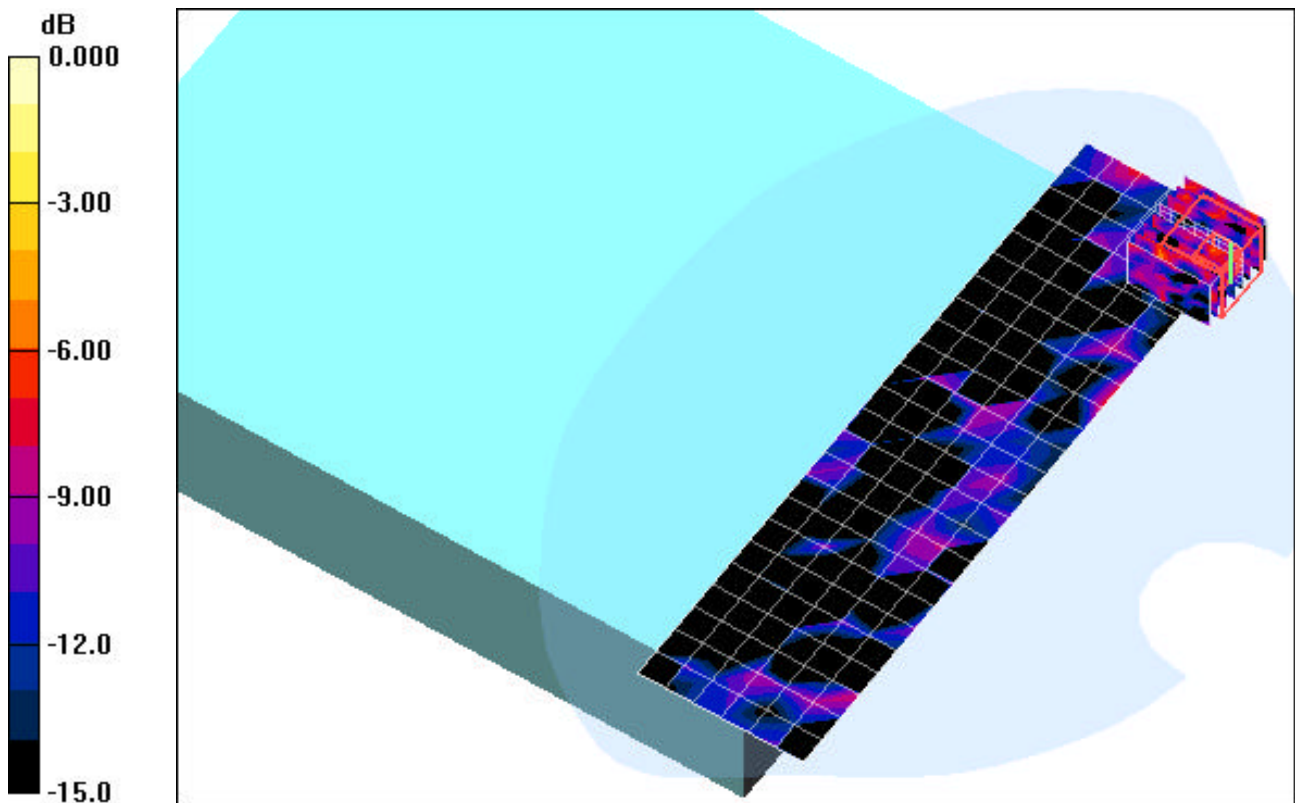
Communication System: IEEE 802.11a 5.3GHz Band; Frequency: 5260 MHz;Duty Cycle: 1:1  
Medium: 5300 Muscle ( $\sigma = 5.35$  mho/m,  $\epsilon_r = 48.28$ ,  $\rho = 1000$  kg/m<sup>3</sup>)  
Phantom section: Flat Section; Space: 0.0 cm

Test Date: 01-27-2008; Ambient Temp: 23.1°C; Tissue Temp: 21.5°C

Probe: EX3DV4 - SN3589; ConvF(3.91, 3.91, 3.91); Calibrated: 5/28/2007  
Sensor-Surface: 3mm (Mechanical Surface Detection)  
Electronics: DAE4 Sn704; Calibrated: 5/25/2007  
Phantom: SAM Main; Type: SAM 4.0; Serial: TP-1406  
Measurement SW: DASY4, V4.7 Build 53; Postprocessing SW: SEMCAD, V1.8 Build 172

**Mode: IEEE 802.11a, Laptop position, LCD Flip, Low.ch, 6Mbps, Main Ant**

**Area Scan (7x25x1):** Measurement grid: dx=10mm, dy=10mm  
**Zoom Scan (8x8x8)/Cube 0:** Measurement grid: dx=4.3mm, dy=4.3mm, dz=3mm  
Reference Value = 0.161 V/m  
Peak SAR (extrapolated) = 0.054 W/kg  
**SAR(1 g) = 0.014 mW/g; SAR(10 g) = 0.007 mW/g**



0 dB = 0.100mW/g

# PCTEST ENGINEERING LABORATORY, INC.

**DUT: CF-18; Type: Laptop/Tablet PC with WLAN, Bluetooth and GPRS/HSDPA  
Serial: 6HKS31869R**

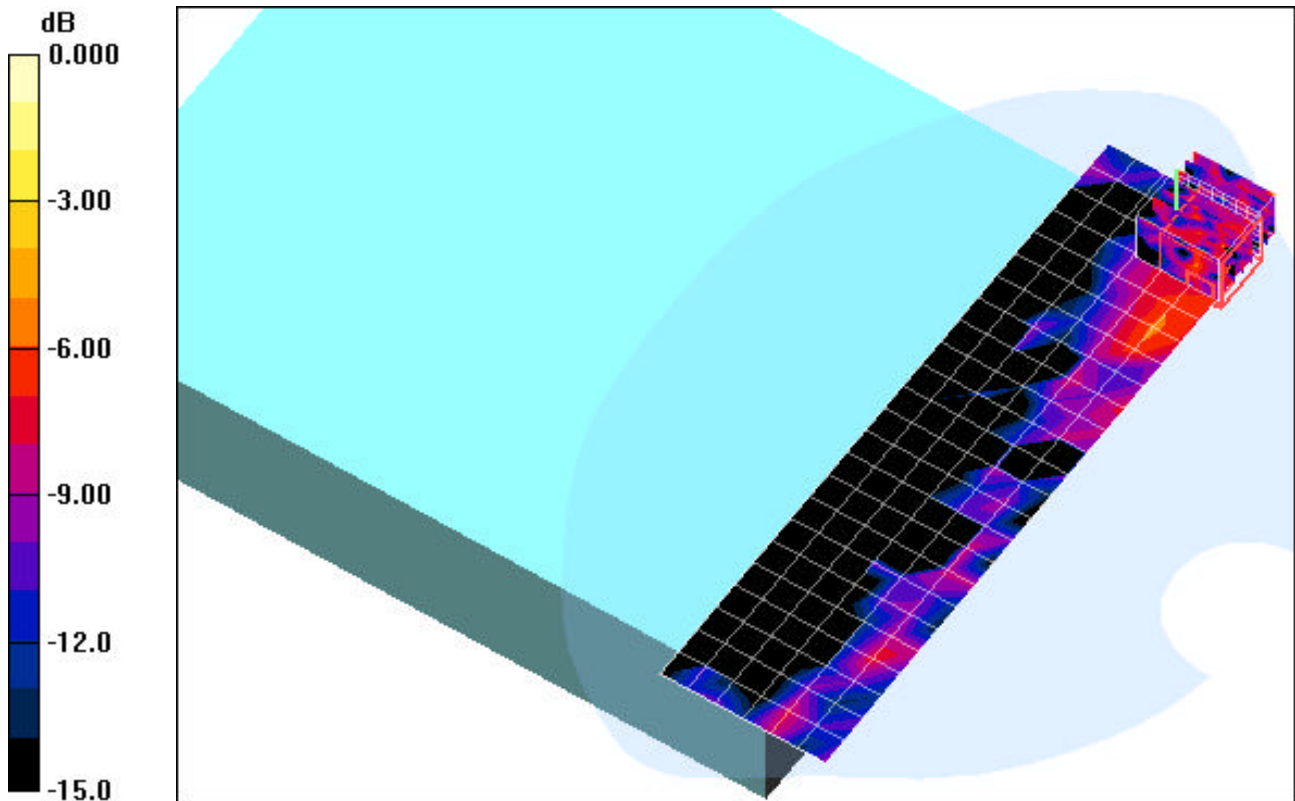
Communication System: IEEE 802.11a 5.3GHz Band; Frequency: 5260 MHz;Duty Cycle: 1:1  
Medium: 5300 Muscle ( $\sigma = 5.35$  mho/m,  $\epsilon_r = 48.28$ ,  $\rho = 1000$  kg/m<sup>3</sup>)  
Phantom section: Flat Section; Space: 0.0 cm

Test Date: 01-28-2008; Ambient Temp: 23.5°C; Tissue Temp: 21.8°C

Probe: EX3DV4 - SN3589; ConvF(3.91, 3.91, 3.91); Calibrated: 5/28/2007  
Sensor-Surface: 3mm (Mechanical Surface Detection)  
Electronics: DAE4 Sn704; Calibrated: 5/25/2007  
Phantom: SAM Main; Type: SAM 4.0; Serial: TP-1406  
Measurement SW: DASY4, V4.7 Build 53; Postprocessing SW: SEMCAD, V1.8 Build 172

**Mode: IEEE 802.11a, Laptop position, LCD Flip, Low.ch, 6Mbps, Aux Ant**

**Area Scan (7x25x1):** Measurement grid: dx=10mm, dy=10mm  
**Zoom Scan (8x8x8)/Cube 0:** Measurement grid: dx=4.3mm, dy=4.3mm, dz=3mm  
Reference Value = 1.32 V/m  
Peak SAR (extrapolated) = 0.143 W/kg  
**SAR(1 g) = 0.016 mW/g; SAR(10 g) = 0.00985 mW/g**



0 dB = 0.100mW/g

# PCTEST ENGINEERING LABORATORY, INC.

**DUT: CF -18; Type: Laptop/Tablet PC with WLAN, Bluetooth and GPRS/HSDPA  
Serial: 6HKS31869R**

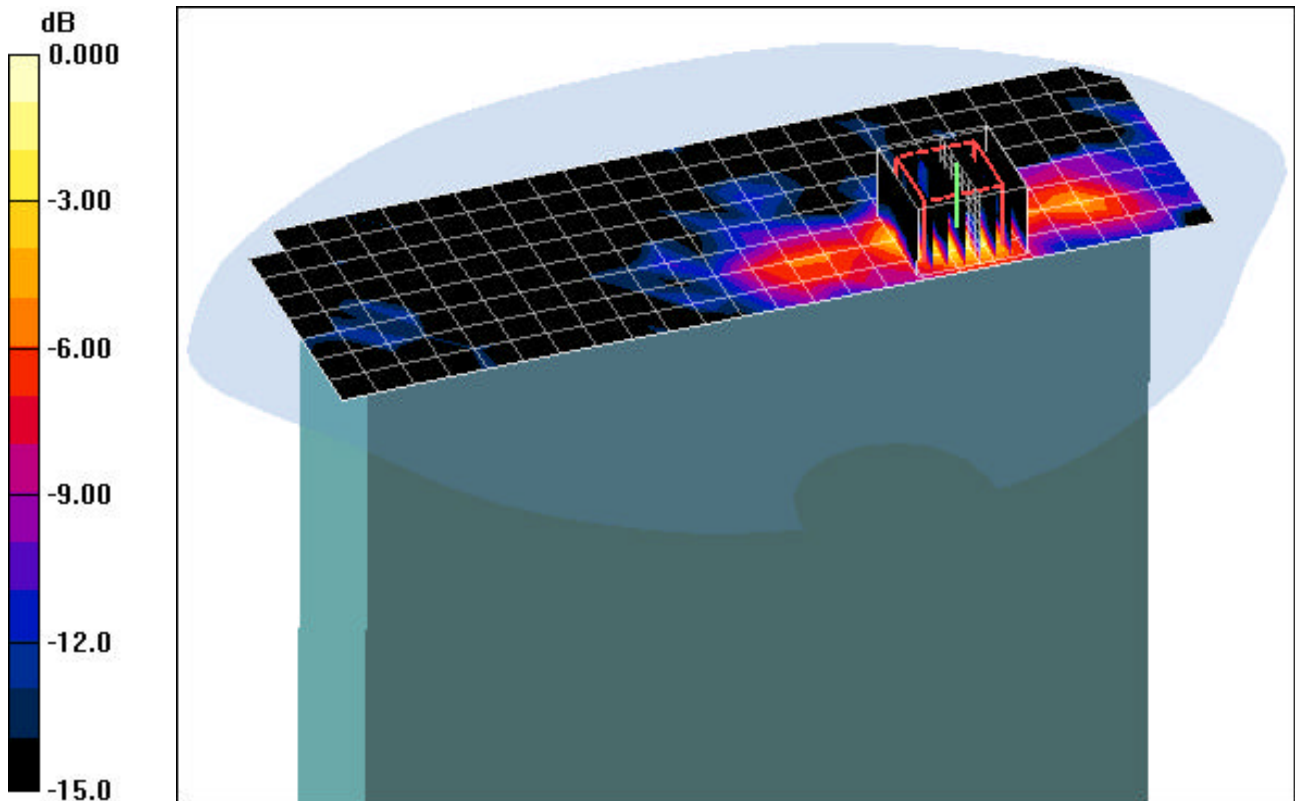
Communication System: IEEE 802.11a 5.3GHz Band; Frequency: 5320 MHz;Duty Cycle: 1:1  
Medium: 5300 Muscle ( $\sigma = 5.35$  mho/m,  $\epsilon_r = 48.28$ ,  $\rho = 1000$  kg/m<sup>3</sup>)  
Phantom section: Flat Section; Space: 0.0 cm

Test Date: 01-26-2008; Ambient Temp: 23.4°C; Tissue Temp: 21.6°C

Probe: EX3DV4 - SN3589; ConvF(3.91, 3.91, 3.91); Calibrated: 5/28/2007  
Sensor-Surface: 3mm (Mechanical Surface Detection)  
Electronics: DAE4 Sn704; Calibrated: 5/25/2007  
Phantom: SAM Main; Type: SAM 4.0; Serial: TP-1406  
Measurement SW: DASY4, V4.7 Build 53; Postprocessing SW: SEMCAD, V1.8 Build 172

**Mode: IEEE 802.11a, Tablet position, Left side, LCD Flip, High.ch, 6Mbps, Main Ant**

**Area Scan (9x25x1):** Measurement grid: dx=10mm, dy=10mm  
**Zoom Scan (8x8x8)/Cube 0:** Measurement grid: dx=4.3mm, dy=4.3mm, dz=3mm  
Reference Value = 7.87 V/m  
Peak SAR (extrapolated) = 0.631 W/kg  
**SAR(1 g) = 0.210 mW/g; SAR(10 g) = 0.070 mW/g**



0 dB = 0.300mW/g

# PCTEST ENGINEERING LABORATORY, INC.

**DUT: CF -18; Type: Laptop/Tablet PC with WLAN, Bluetooth and GPRS/HSDPA  
Serial: 6HKS31869R**

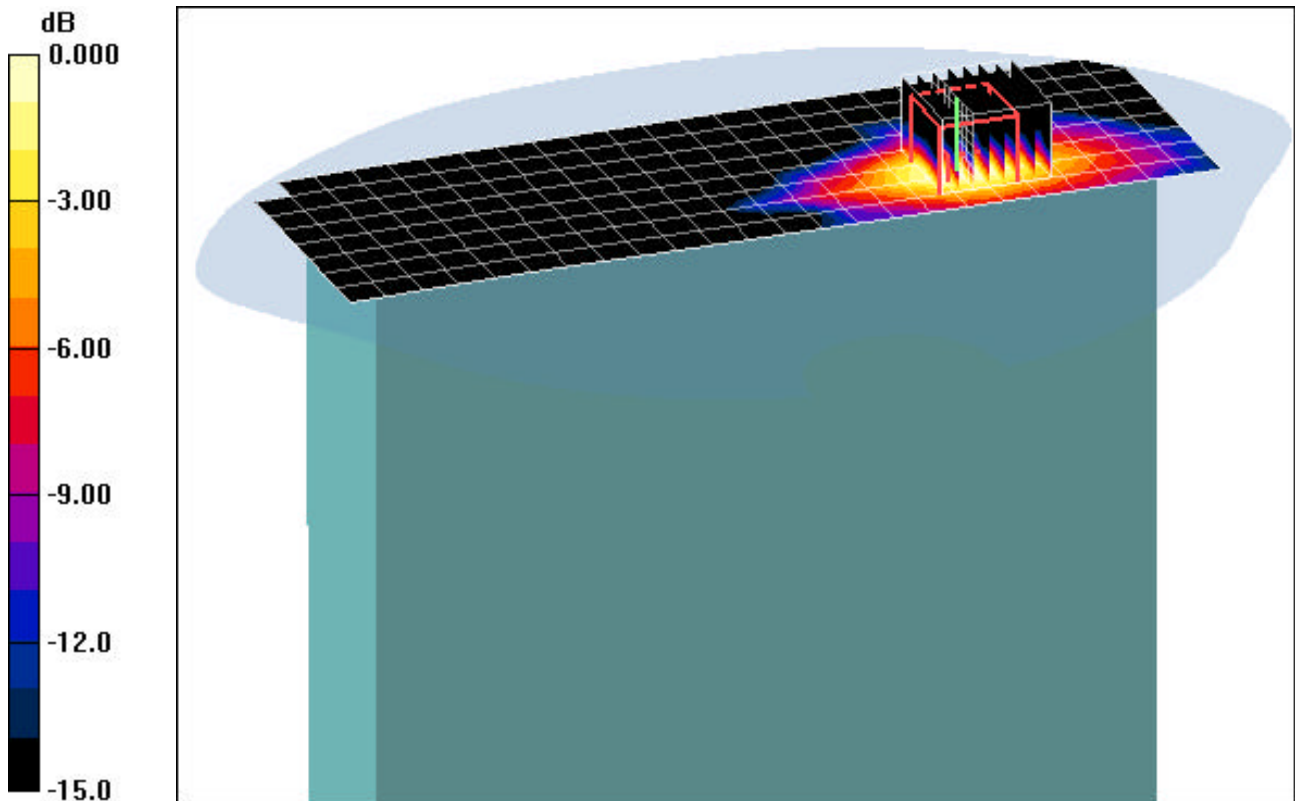
Communication System: IEEE 802.11a 5.3GHz Band; Frequency: 5320 MHz;Duty Cycle: 1:1  
Medium: 5300 Muscle ( $\sigma = 5.35$  mho/m,  $\epsilon_r = 48.28$ ,  $\rho = 1000$  kg/m<sup>3</sup>)  
Phantom section: Flat Section; Space: 0.0 cm

Test Date: 01-27-2008; Ambient Temp: 23.1°C; Tissue Temp: 21.5°C

Probe: EX3DV4 - SN3589; ConvF(3.91, 3.91, 3.91); Calibrated: 5/28/2007  
Sensor-Surface: 3mm (Mechanical Surface Detection)  
Electronics: DAE4 Sn704; Calibrated: 5/25/2007  
Phantom: SAM Main; Type: SAM 4.0; Serial: TP-1406  
Measurement SW: DASY4, V4.7 Build 53; Postprocessing SW: SEMCAD, V1.8 Build 172

**Mode: IEEE 802.11a, Tablet position, Right side, LCD Flip, High.ch, 6Mbps, Aux Ant**

**Area Scan (9x25x1):** Measurement grid: dx=10mm, dy=10mm  
**Zoom Scan (8x8x8)/Cube 0:** Measurement grid: dx=4.3mm, dy=4.3mm, dz=3mm  
Reference Value = 13.9 V/m  
Peak SAR (extrapolated) = 2.50 W/kg  
**SAR(1 g) = 0.678 mW/g; SAR(10 g) = 0.248 mW/g**



0 dB = 0.700mW/g

# PCTEST ENGINEERING LABORATORY, INC.

**DUT: CF -18; Type: Laptop/Tablet PC with WLAN, Bluetooth and GPRS/HSDPA  
Serial: 6HKS31869R**

Communication System: IEEE 802.11a 5.8GHz Band; Frequency: 5785 MHz; Duty Cycle: 1:1  
Medium: 5800 Muscle ( $\sigma = 6.22$  mho/m,  $\epsilon_r = 46.51$ ,  $\rho = 1000$  kg/m<sup>3</sup>)  
Phantom section: Flat Section; Space: 0.0 cm

Test Date: 01-27-2008; Ambient Temp: 23.5°C; Tissue Temp: 21.7°C

Probe: EX3DV4 - SN3589; ConvF(3.97, 3.97, 3.97); Calibrated: 5/28/2007  
Sensor-Surface: 3mm (Mechanical Surface Detection)  
Electronics: DAE4 Sn704; Calibrated: 5/25/2007  
Phantom: SAM Main; Type: SAM 4.0; Serial: TP-1406  
Measurement SW: DASY4, V4.7 Build 53; Postprocessing SW: SEMCAD, V1.8 Build 172

**Mode: IEEE 802.11a, Laptop position, LCD Flip, Mid.ch, 6Mbps, Main Ant**

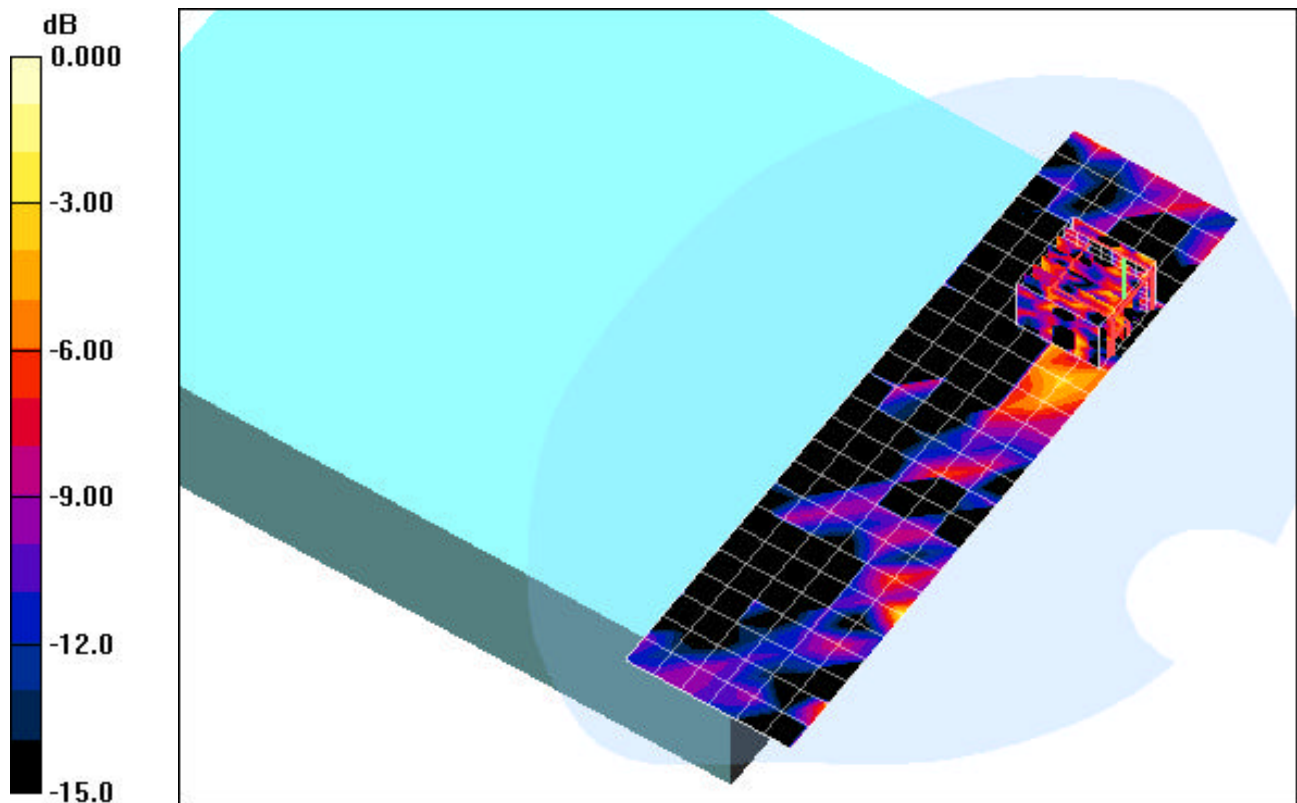
**Area Scan (7x25x1):** Measurement grid: dx=10mm, dy=10mm

**Zoom Scan (8x8x8)/Cube 0:** Measurement grid: dx=4.3mm, dy=4.3mm, dz=3mm

Reference Value = 0.911 V/m

Peak SAR (extrapolated) = 0.148 W/kg

**SAR(1 g) = 0.015 mW/g; SAR(10 g) = 0.00627 mW/g**



0 dB = 0.100mW/g

# PCTEST ENGINEERING LABORATORY, INC.

**DUT: CF -18; Type: Laptop/Tablet PC with WLAN, Bluetooth and GPRS/HSDPA  
Serial: 6HKS31869R**

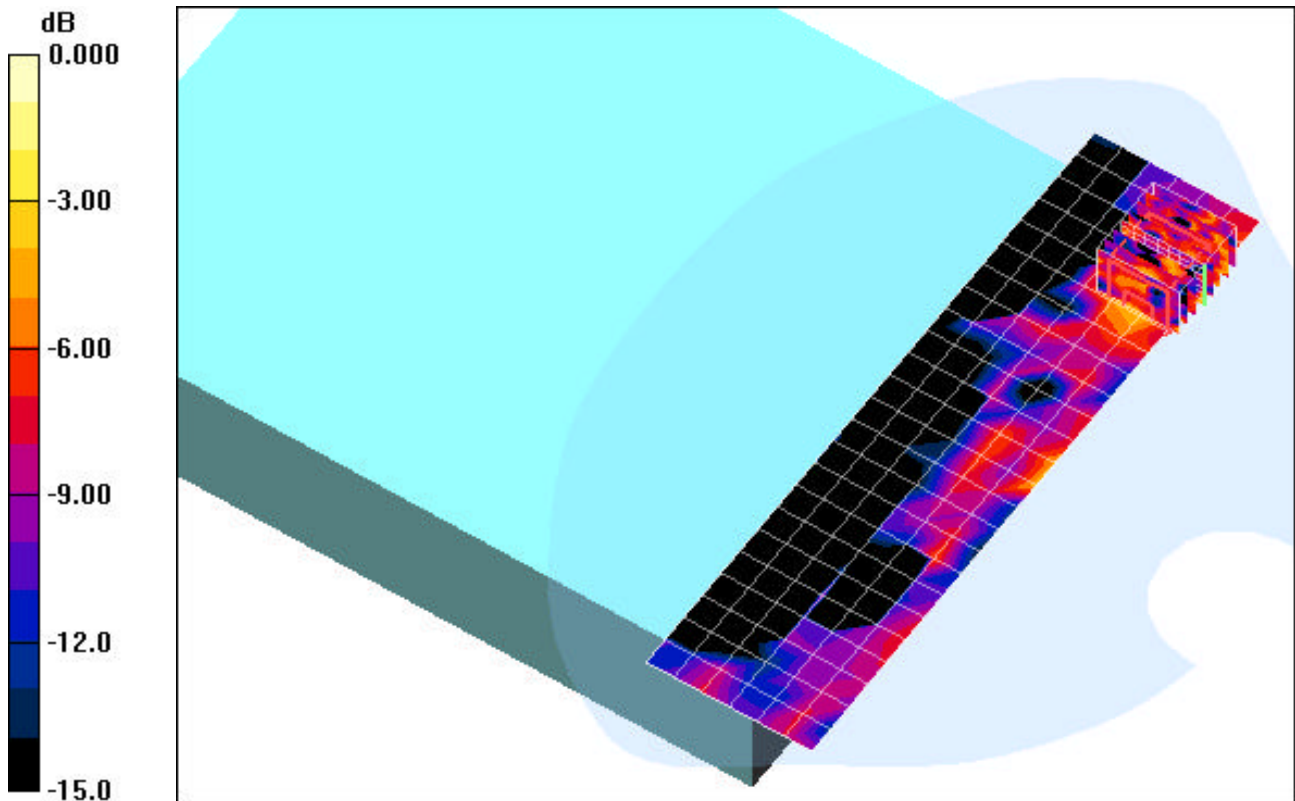
Communication System: IEEE 802.11a 5.8GHz Band; Frequency: 5785 MHz;Duty Cycle: 1:1  
Medium: 5800 Muscle ( $\sigma = 6.22$  mho/m,  $\epsilon_r = 46.51$ ,  $\rho = 1000$  kg/m<sup>3</sup>)  
Phantom section: Flat Section; Space: 0.0 cm

Test Date: 01-28-2008; Ambient Temp: 23.6°C; Tissue Temp: 21.8°C

Probe: EX3DV4 - SN3589; ConvF(3.97, 3.97, 3.97); Calibrated: 5/28/2007  
Sensor-Surface: 3mm (Mechanical Surface Detection)  
Electronics: DAE4 Sn704; Calibrated: 5/25/2007  
Phantom: SAM Main; Type: SAM 4.0; Serial: TP-1406  
Measurement SW: DASY4, V4.7 Build 53; Postprocessing SW: SEMCAD, V1.8 Build 172

**Mode: IEEE 802.11a, Laptop position, LCD Flip, Mid.ch, 6Mbps, Aux Ant**

**Area Scan (7x25x1):** Measurement grid: dx=10mm, dy=10mm  
**Zoom Scan (8x8x8)/Cube 0:** Measurement grid: dx=4.3mm, dy=4.3mm, dz=3mm  
Reference Value = 2.75 V/m  
Peak SAR (extrapolated) = 0.196 W/kg  
**SAR(1 g) = 0.031 mW/g; SAR(10 g) = 0.018 mW/g**



0 dB = 0.100mW/g

# PCTEST ENGINEERING LABORATORY, INC.

**DUT: CF -18; Type: Laptop/Tablet PC with WLAN, Bluetooth and GPRS/HSDPA  
Serial: 6HKS31869R**

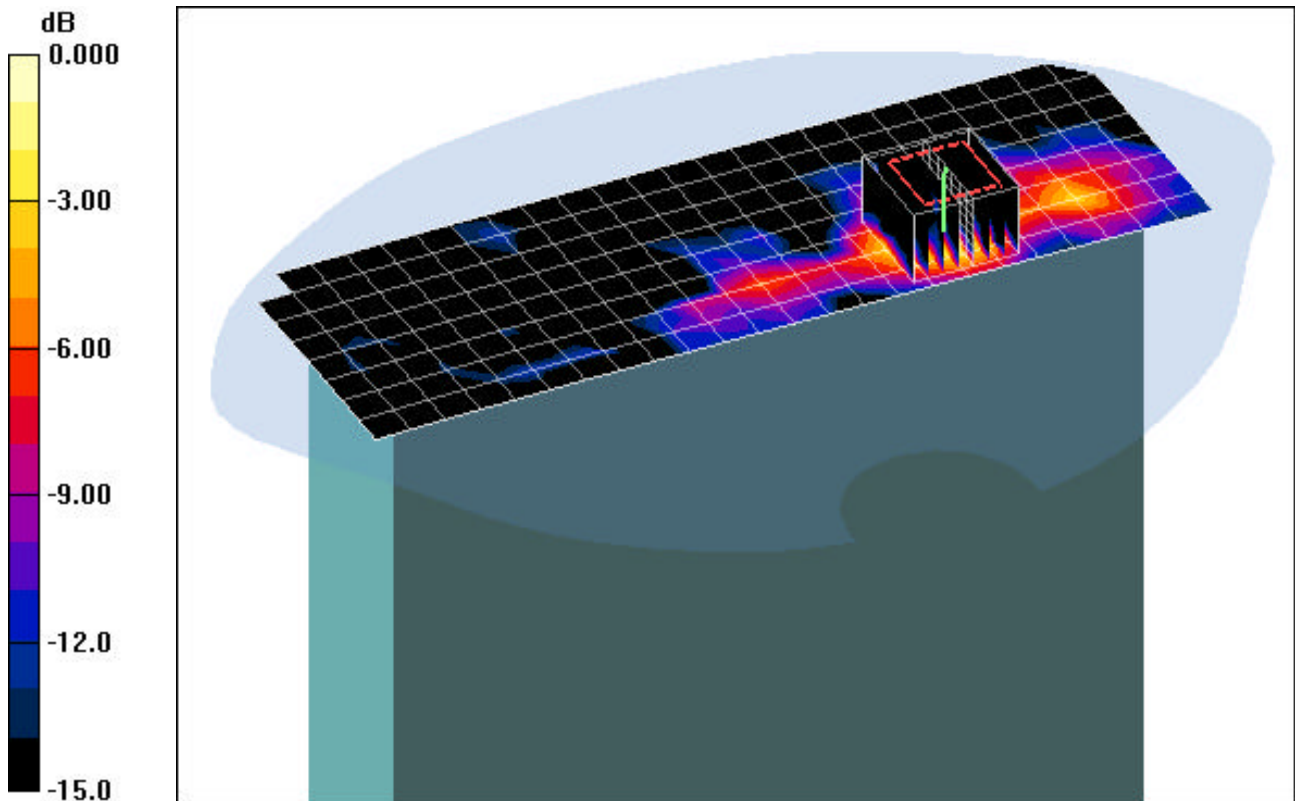
Communication System: IEEE 802.11a 5.8GHz Band; Frequency: 5825 MHz;Duty Cycle: 1:1  
Medium: 5800 Muscle ( $\sigma = 6.22$  mho/m,  $\epsilon_r = 46.51$ ,  $\rho = 1000$  kg/m<sup>3</sup>)  
Phantom section: Flat Section; Space: 0.0 cm

Test Date: 01-26-2008; Ambient Temp: 23.4°C; Tissue Temp: 21.8°C

Probe: EX3DV4 - SN3589; ConvF(3.97, 3.97, 3.97); Calibrated: 5/28/2007  
Sensor-Surface: 3mm (Mechanical Surface Detection)  
Electronics: DAE4 Sn704; Calibrated: 5/25/2007  
Phantom: SAM Main; Type: SAM 4.0; Serial: TP-1406  
Measurement SW: DASY4, V4.7 Build 53; Postprocessing SW: SEMCAD, V1.8 Build 172

**Mode: IEEE 802.11a, Tablet position, Left side, LCD Flip, High.ch, 6Mbps, Main Ant**

**Area Scan (9x25x1):** Measurement grid: dx=10mm, dy=10mm  
**Zoom Scan (8x8x8)/Cube 0:** Measurement grid: dx=4.3mm, dy=4.3mm, dz=3mm  
Reference Value = 8.40 V/m  
Peak SAR (extrapolated) = 1.16 W/kg  
**SAR(1 g) = 0.332 mW/g; SAR(10 g) = 0.113 mW/g**



0 dB = 0.400mW/g

# PCTEST ENGINEERING LABORATORY, INC.

**DUT: CF -18; Type: Laptop/Tablet PC with WLAN, Bluetooth and GPRS/HSDPA  
Serial: 6HKS31869R**

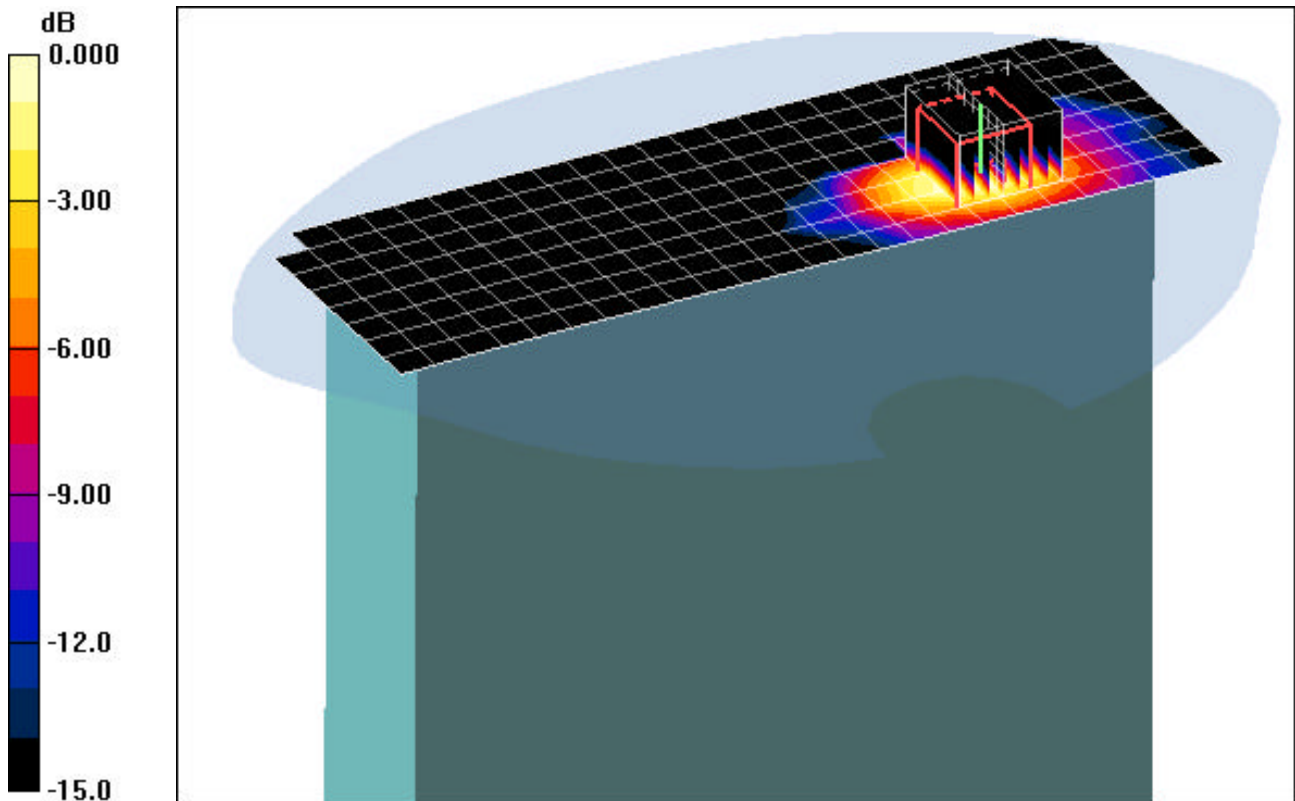
Communication System: IEEE 802.11a 5.8GHz Band; Frequency: 5825 MHz; Duty Cycle: 1:1  
Medium: 5800 Muscle ( $\sigma = 6.22$  mho/m,  $\epsilon_r = 46.51$ ,  $\rho = 1000$  kg/m<sup>3</sup>)  
Phantom section: Flat Section; Space: 0.0 cm

Test Date: 01-27-2008; Ambient Temp: 23.5°C; Tissue Temp: 21.7°C

Probe: EX3DV4 - SN3589; ConvF(3.97, 3.97, 3.97); Calibrated: 5/28/2007  
Sensor-Surface: 3mm (Mechanical Surface Detection)  
Electronics: DAE4 Sn704; Calibrated: 5/25/2007  
Phantom: SAM Main; Type: SAM 4.0; Serial: TP-1406  
Measurement SW: DASY4, V4.7 Build 53; Postprocessing SW: SEMCAD, V1.8 Build 172

**Mode: IEEE 802.11a, Tablet position, Right side, LCD Flip, High.ch, 6Mbps, Aux Ant**

**Area Scan (9x25x1):** Measurement grid: dx=10mm, dy=10mm  
**Zoom Scan (8x8x8)/Cube 0:** Measurement grid: dx=4.3mm, dy=4.3mm, dz=3mm  
Reference Value = 17.6 V/m  
Peak SAR (extrapolated) = 5.47 W/kg  
**SAR(1 g) = 1.27 mW/g; SAR(10 g) = 0.446 mW/g**



0 dB = 1.30mW/g