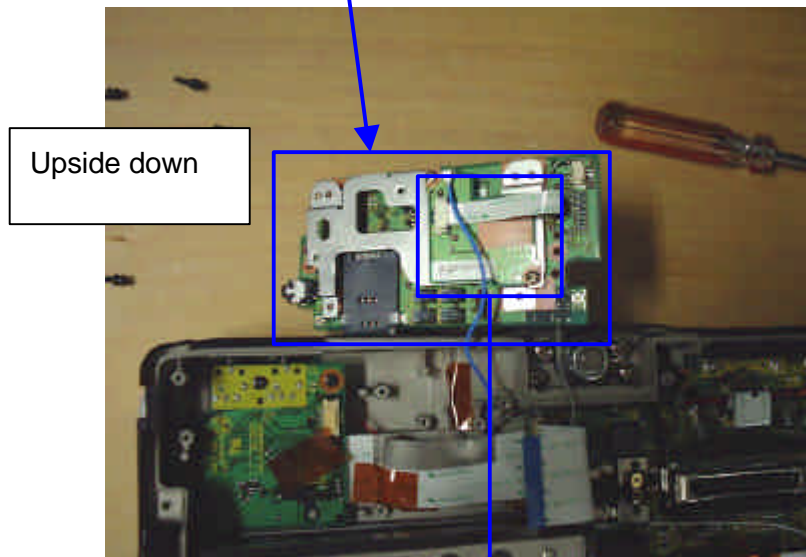
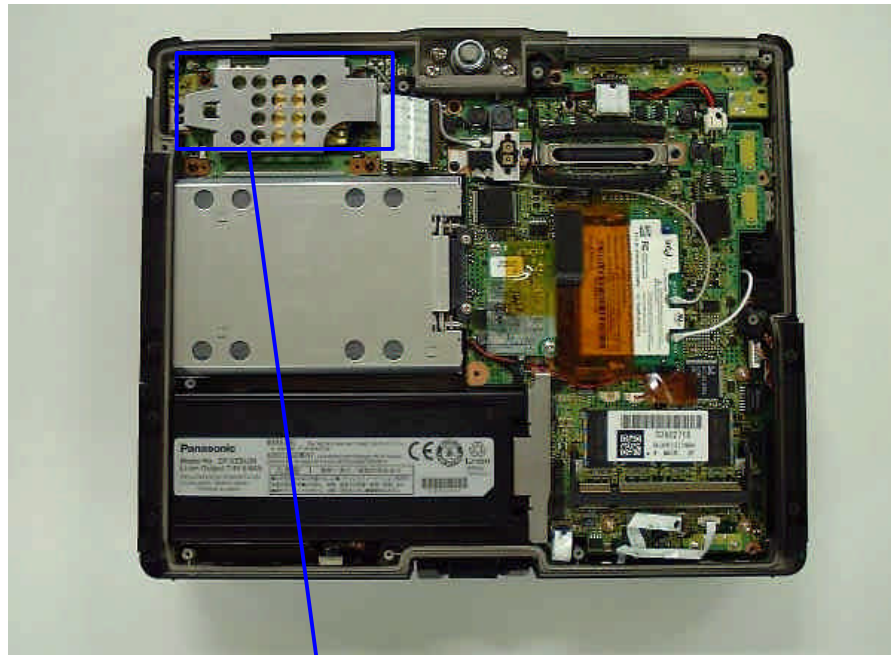


2) BlueTooth module position



Bottom View of Bluetooth Module with Daughter Board

3) Bluetooth Module exterior photo



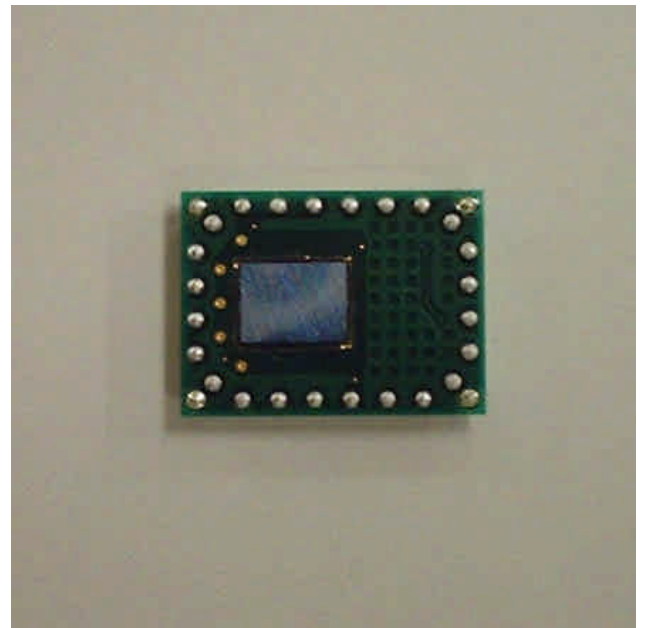
Top View of Bluetooth Module with Daughter-Board



Bottom View of Bluetooth module with Daughter-Board

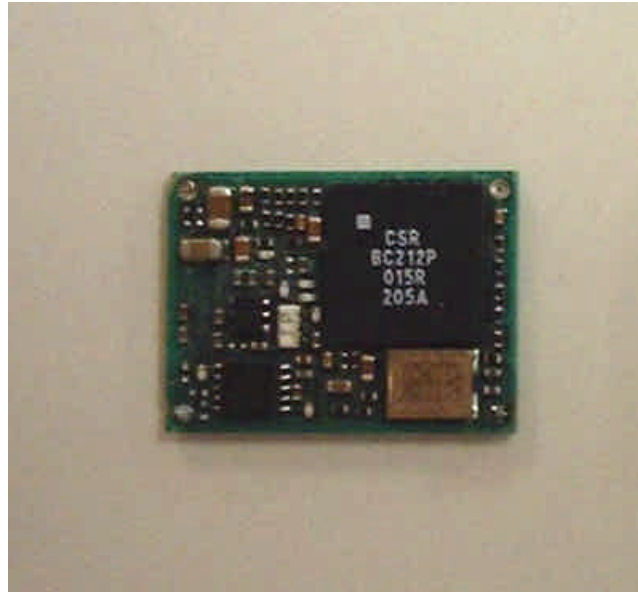


Top View of Bluetooth Module



Bottom View of Bluetooth Module

4) Bluetooth Module Interior photo



Bluetooth Module without shield

5) WLAN Card position



WLAN Card Position

6) WLAN exterior photo

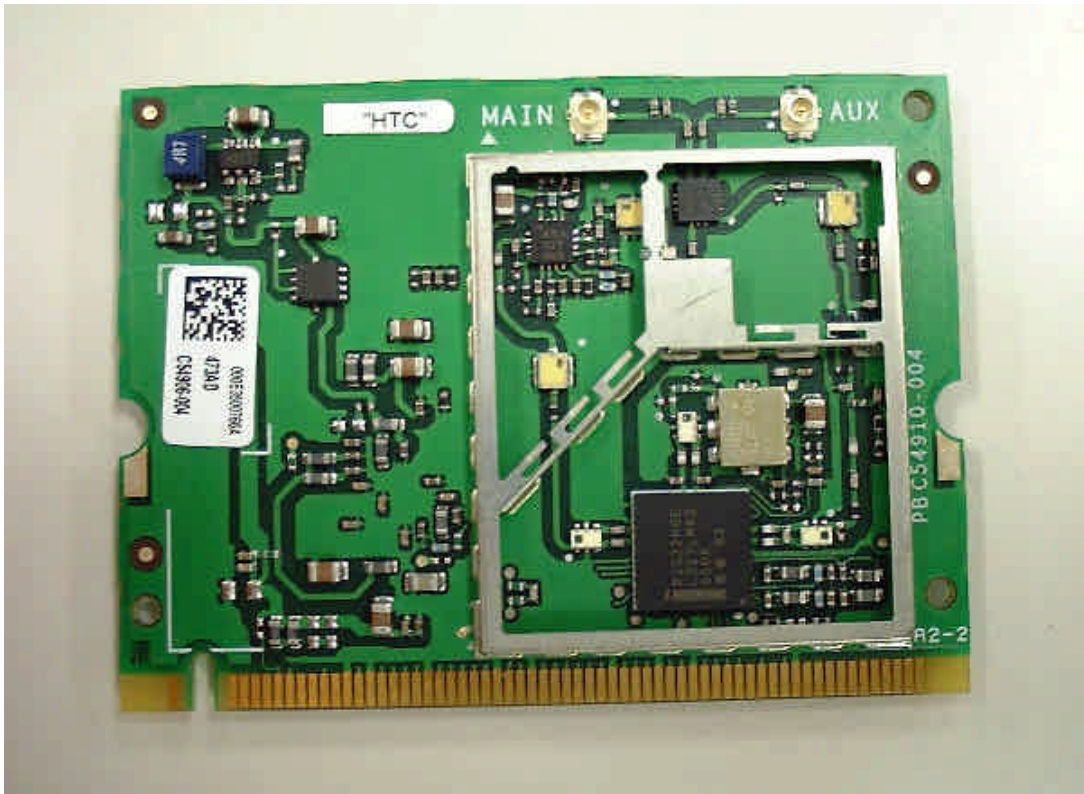


WLAN Top View



WLAN Bottom View

7) WLAN interior photo



WLAN inside Top View

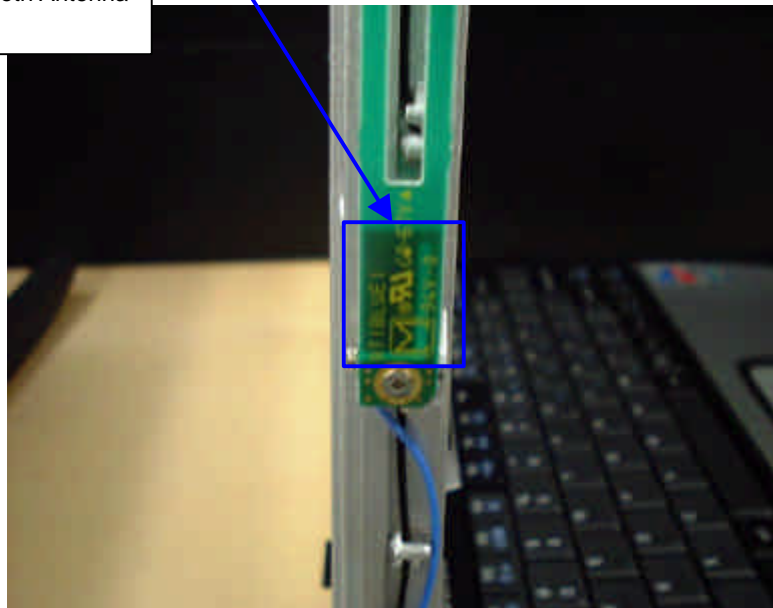


WLAN inside Bottom View

8) Antenna position



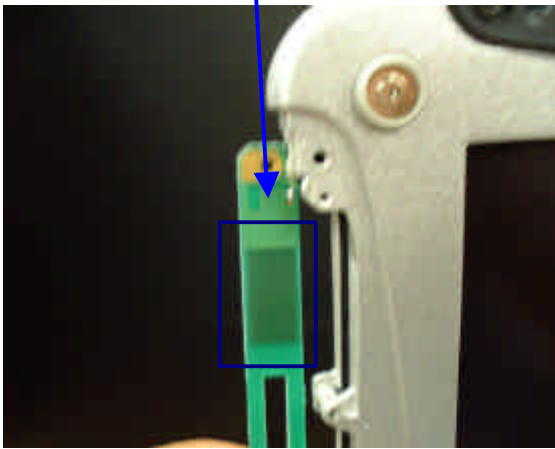
Bluetooth Antenna



Left Antenna
(send & receive)



Right Antenna
(receive only)



Left antenna (Send & Receive)



Right Antenna (Receive only)

9) Antenna Specification

WLAN Right Antenna: Pattern Antenna (Inverted F type: 1.42dBi max)

WLAN Left Antenna: Pattern Antenna (Inverted F type: 2.59dBi max)

Bluetooth Antenna: Pattern Antenna (Inverted F type: 3.54dBi max)