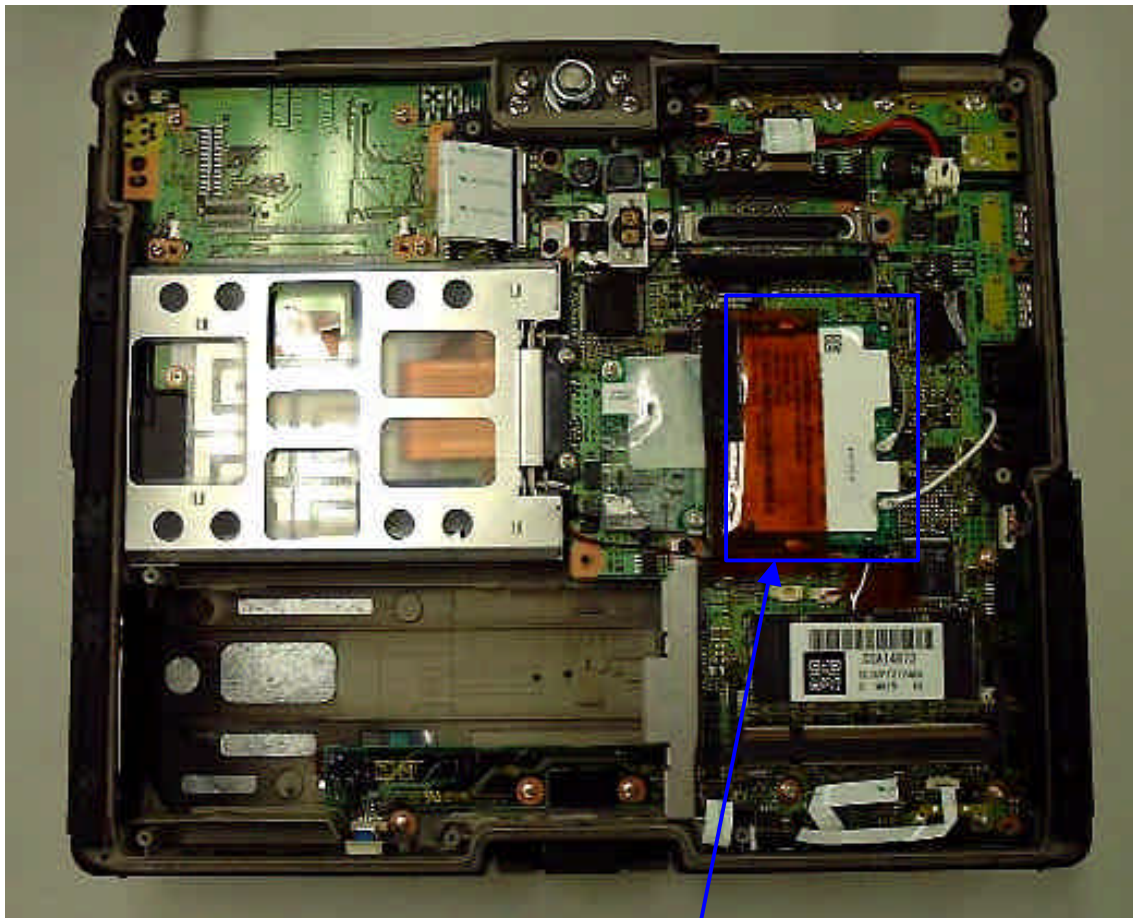


2) WLAN Card position



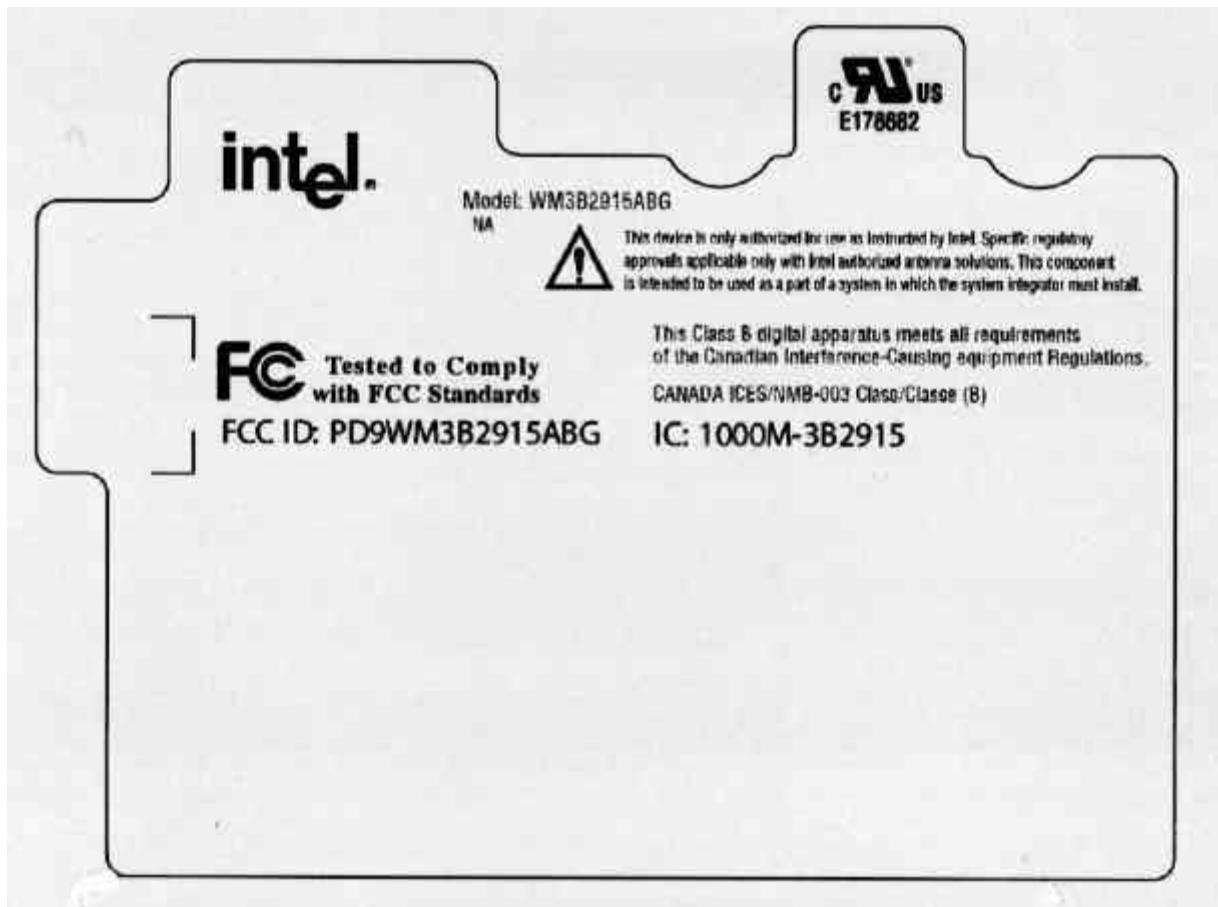
WLAN Card Position

3) WLAN exterior photo



WLAN Top View

\*The Rating Plate of above photo is not final. See hereinafter Rating Plate design.

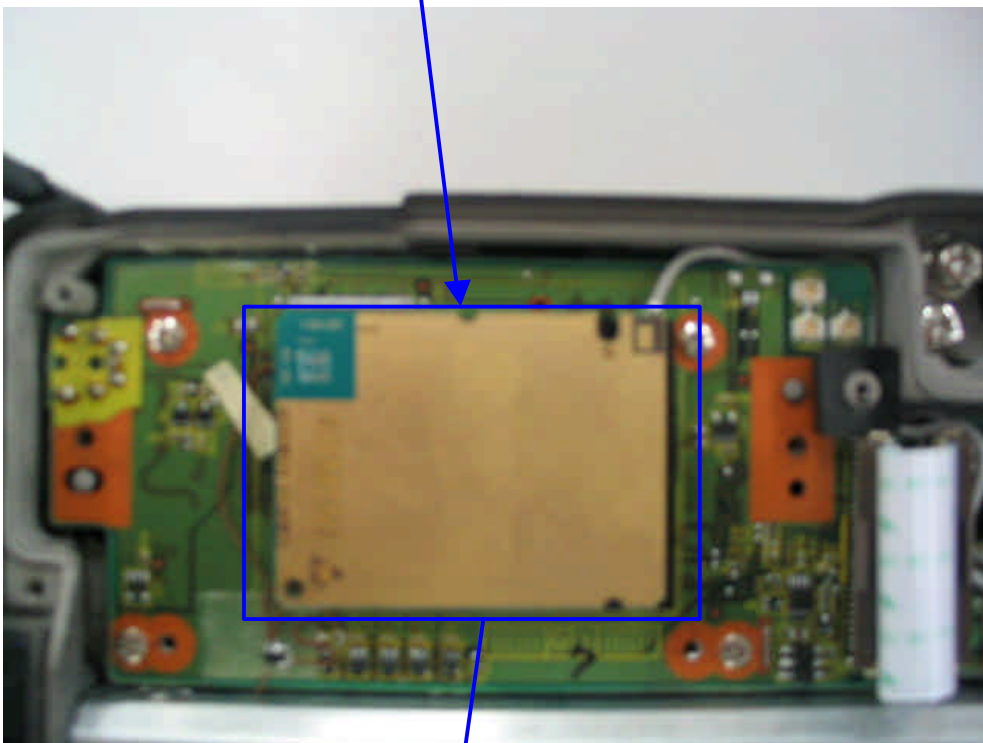




WLAN Bottom View



5) EGPRS(MC75) module position



EVDO Module (EM5625)  
\*\* Non-shield metal

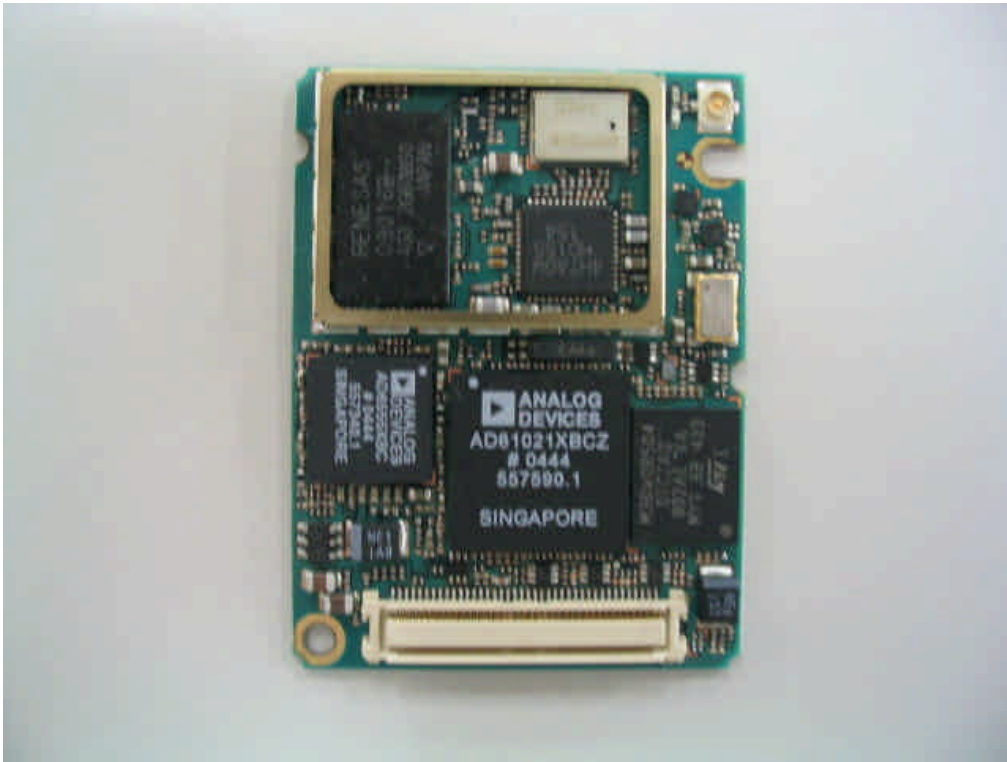
6) EGPRS Module photo



MC75 Module Top View

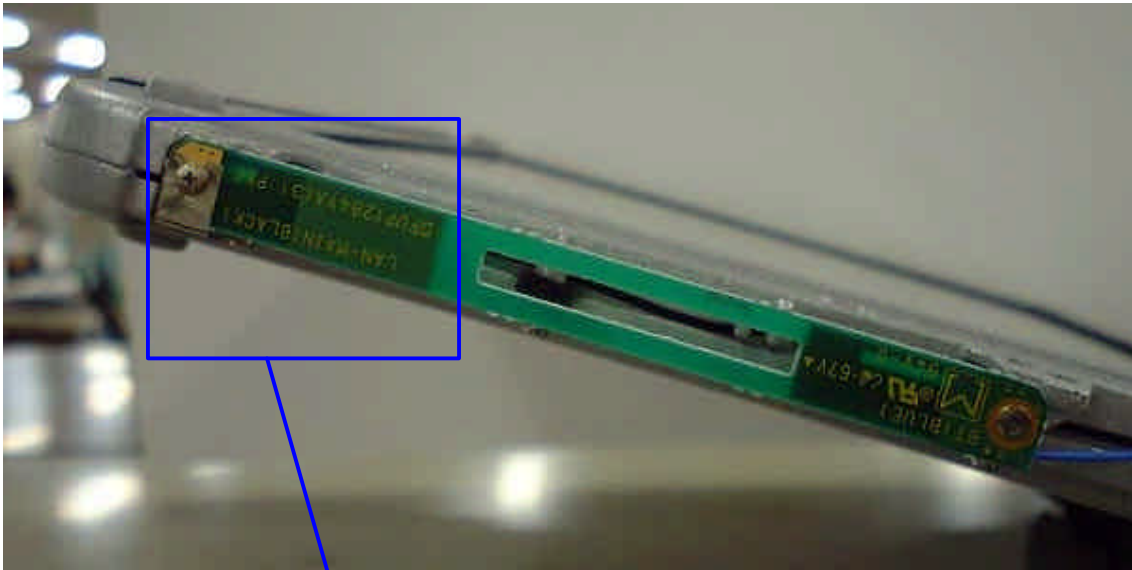


MC75 module Bottom View



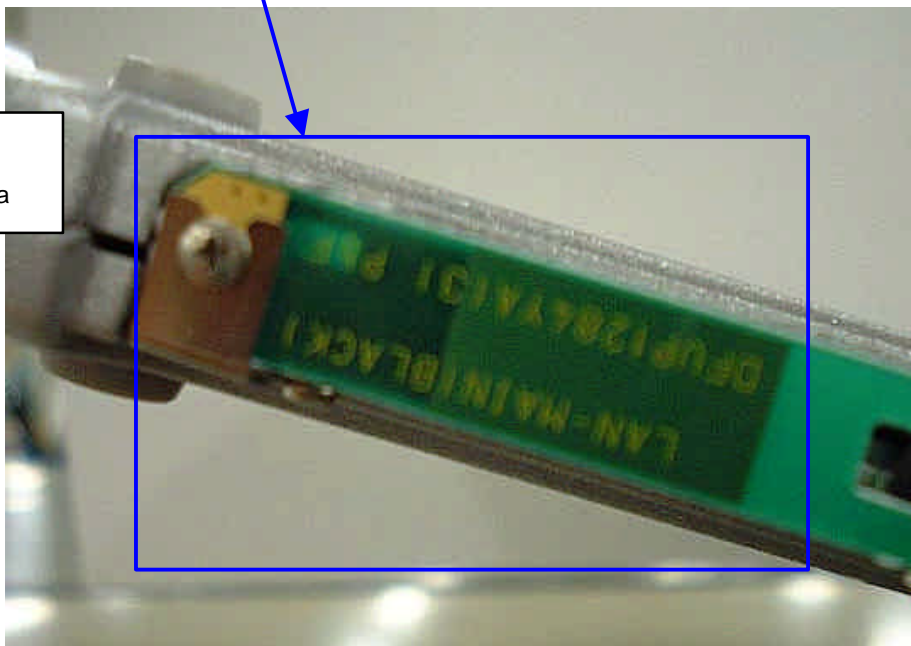
MC75 Module Interior Top View

7) Antenna position

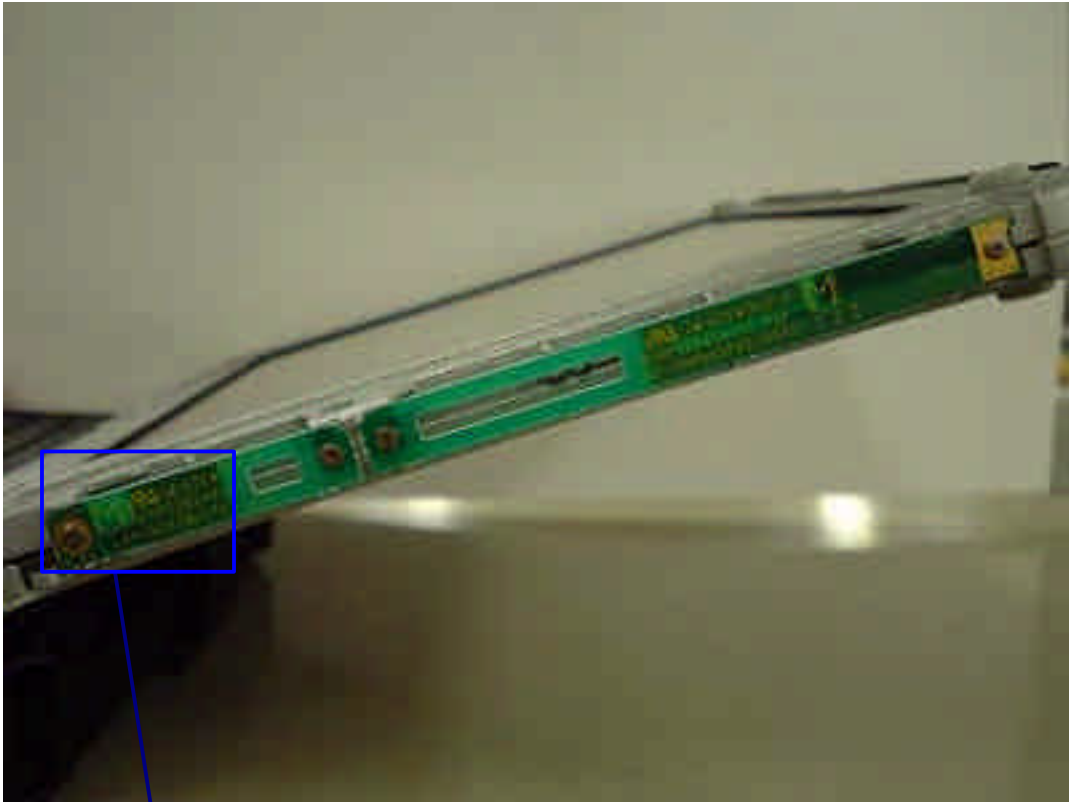


LCD Left Side View

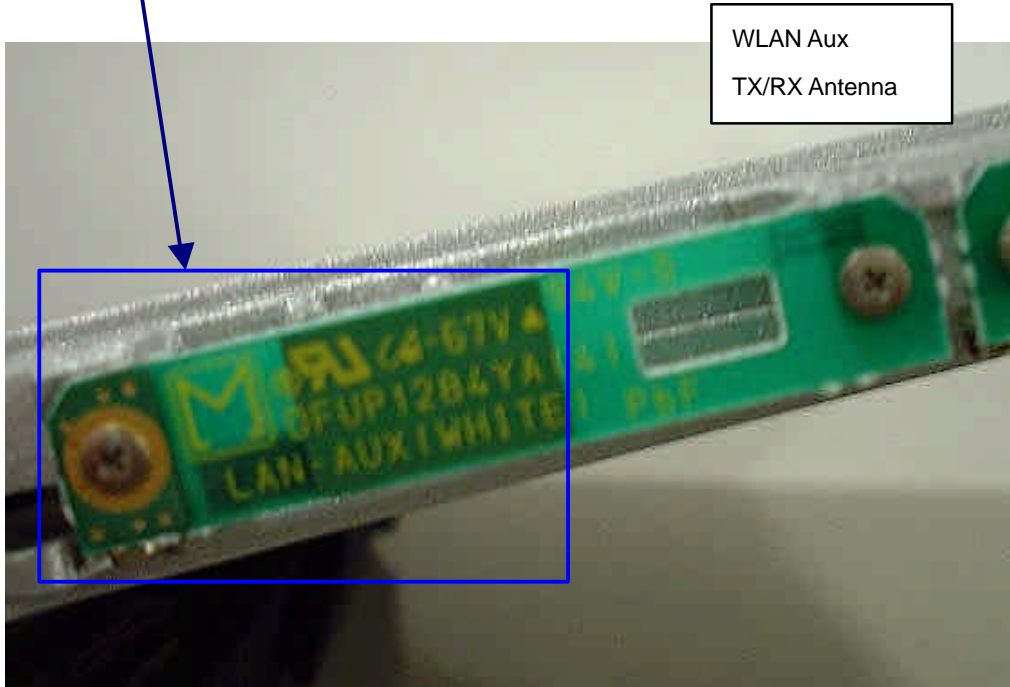
WLAN Main  
TX/RX Antenna



WLAN Main TX/RX Antenna



LCD Right Side View



WLAN Aux TX/RX Antenna



EGPRS  
Antenna  
Position  
(Pattern  
Antenna)



Antenna cover open view



Antenna Magnified View

## 8) Antenna Specification

WLAN Main TX/RX Antenna: Pattern Antenna (Inverted F type: 1.42dBi max)

WLAN Aux TX/RX Antenna: Pattern Antenna (Inverted F type: 2.59dBi max)

EGPRS Antenna: Pattern Antenna (Inverted-F type: 2.15dBi max)

Note) WLAN Main/Aux Antenna is diversity Antenna.