

1.2 Antenna Configuration

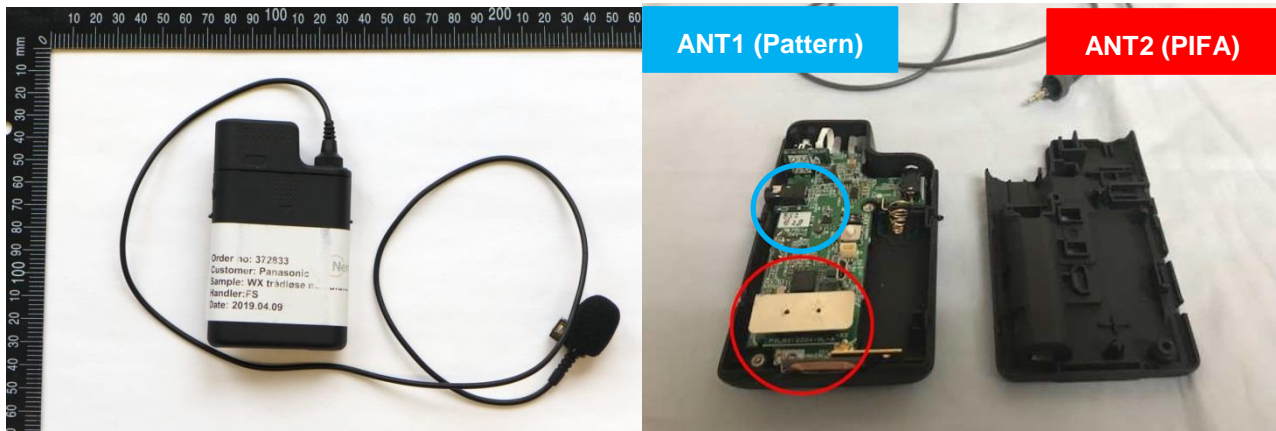


Fig. 1: Front view and antenna location of DUT.

Appendix A - Pictures

Pictures of the DUT

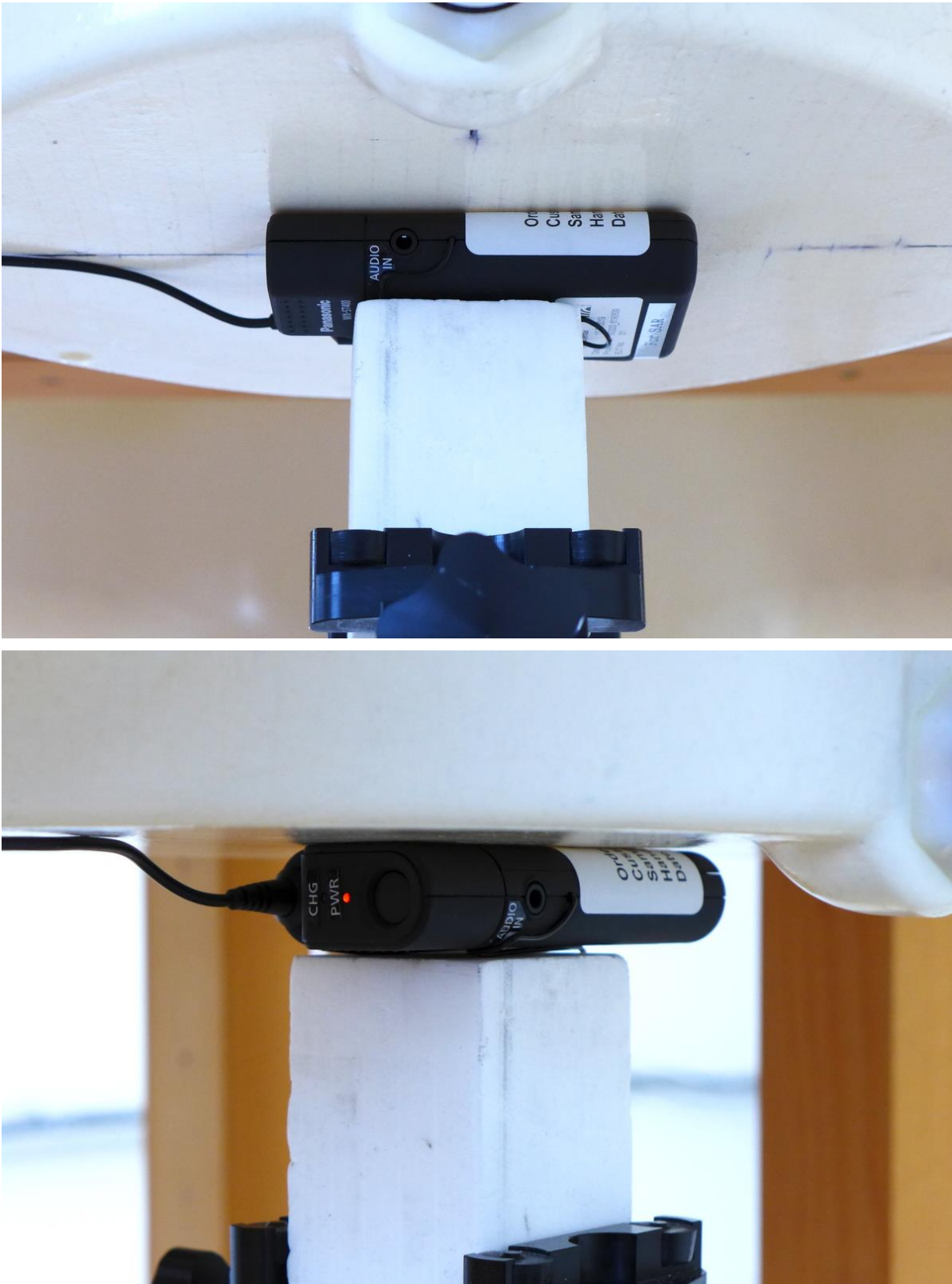


Pic. 1: Front and side views of the device under test.

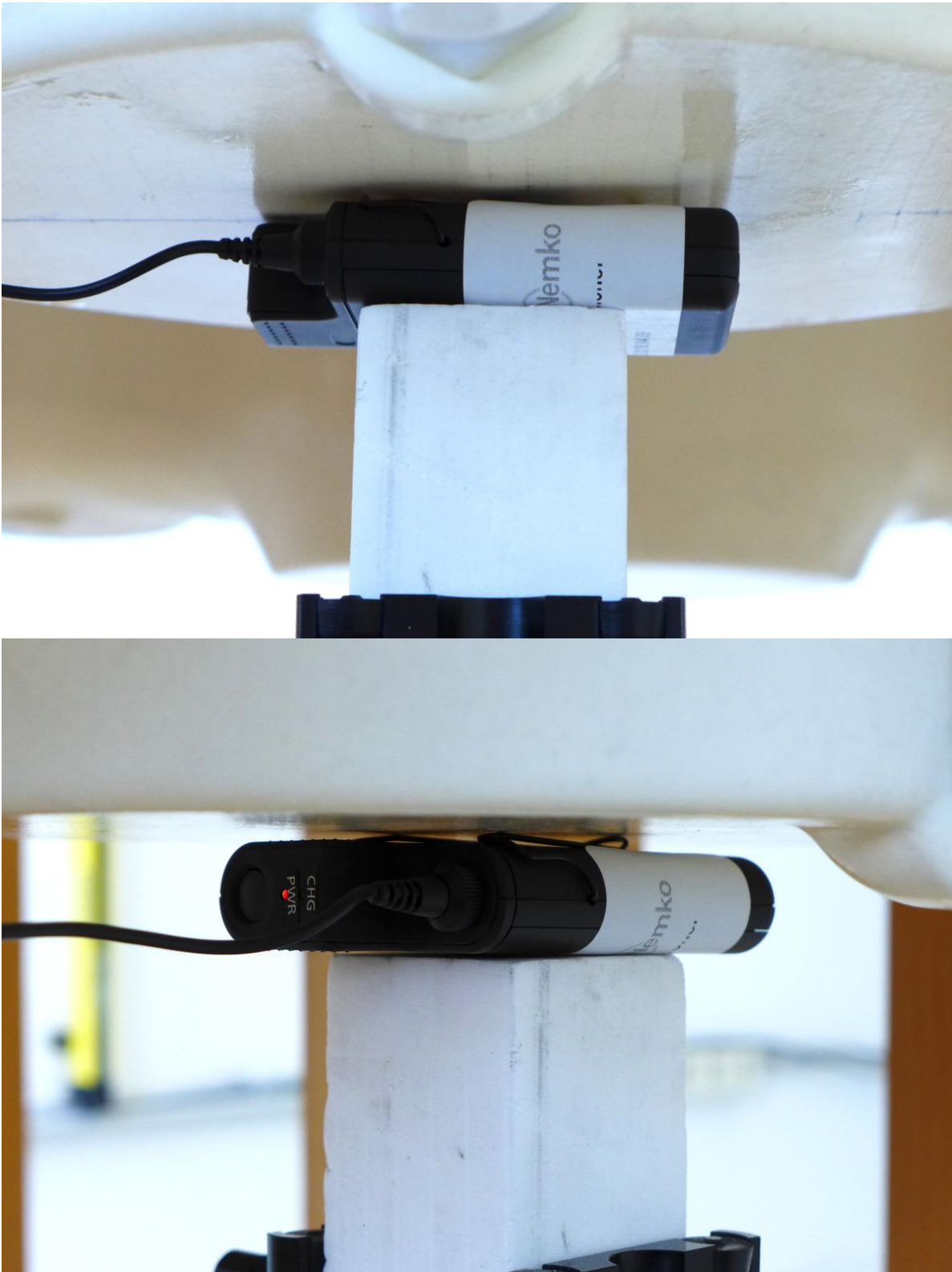


Pic. 2: Back and side views of the device under test.

Pictures of Test Positions of the DUT



Pic. 3: Test position 1, front of DUT towards the phantom, 0 mm gap.



Pic. 4: Test position 2, back of DUT towards the phantom, 0 mm gap.