

1.2 Antenna Configuration

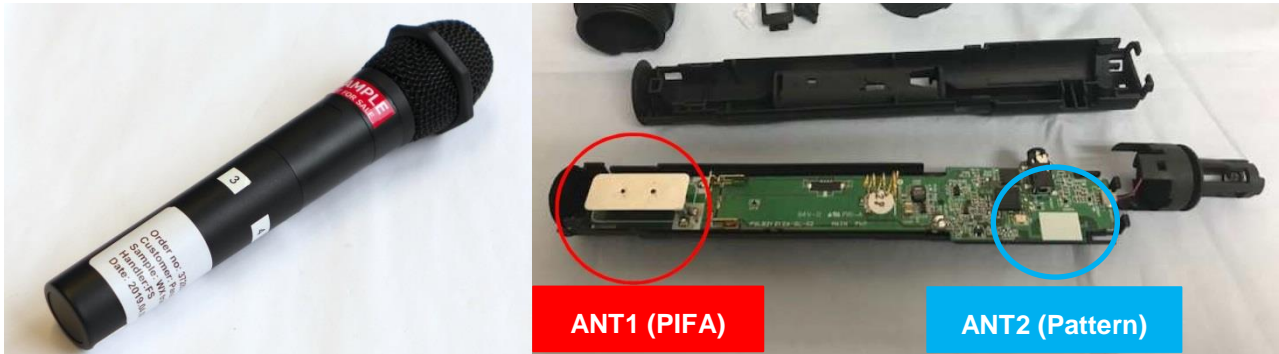


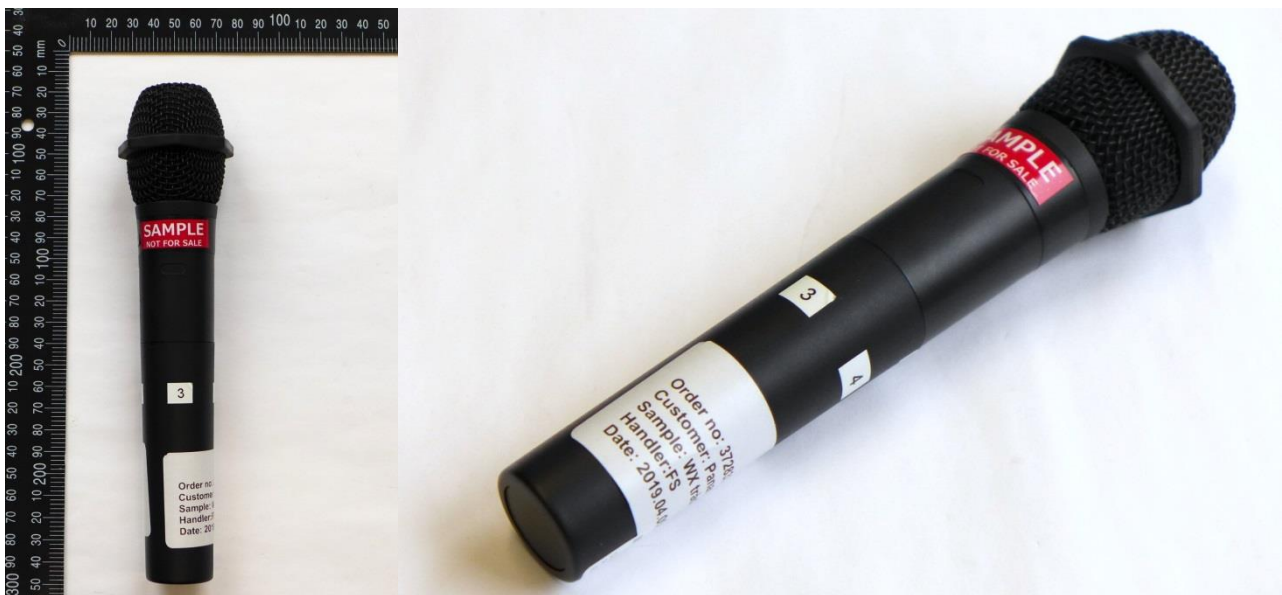
Fig. 1: Side view and antenna location of DUT.

Appendix A - Pictures

Pictures of the DUT



Pic. 1: Front and side views of the device under test.



Pic. 2: Back and side views of the device under test.

Pictures of Test Positions of the DUT



Pic. 3: Test position 1, DUT towards the phantom, 0 mm gap.



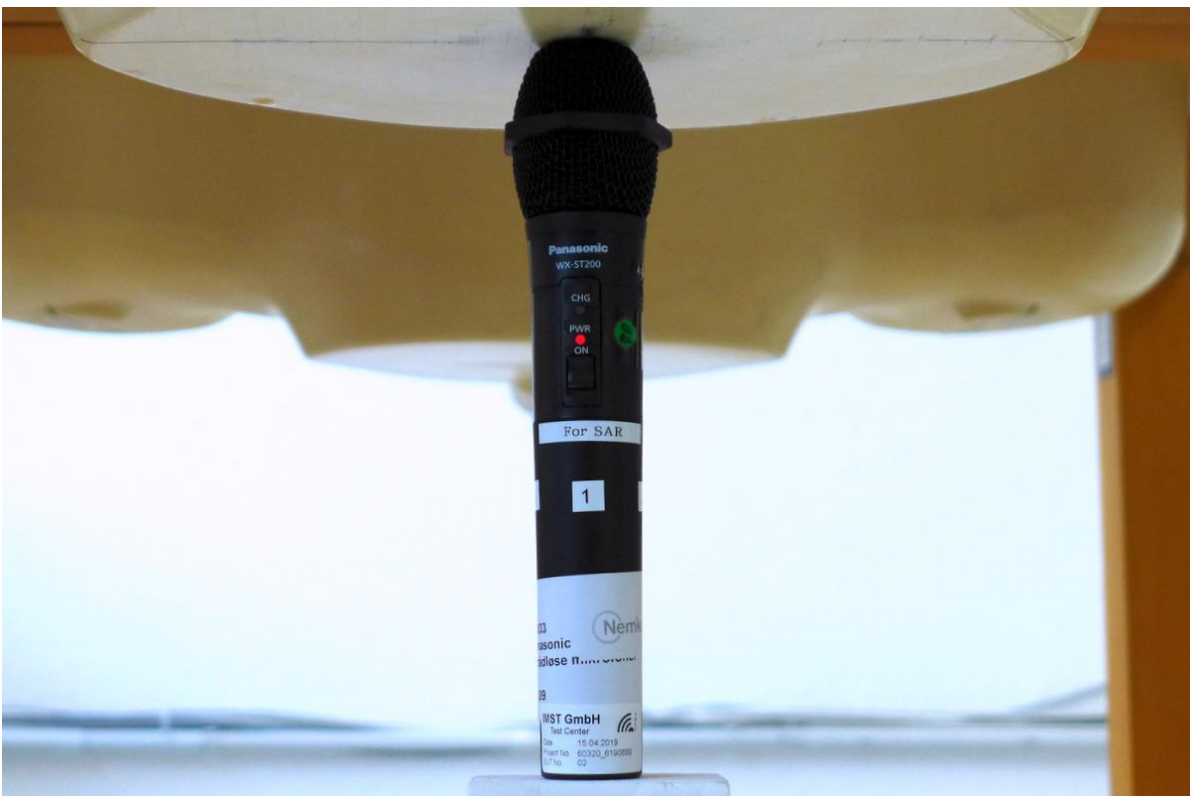
Pic. 4: Test position 2, DUT towards the phantom, 0 mm gap.



Pic. 5: Test position 3, DUT towards the phantom, 0 mm gap.



Pic. 6: Test position 4, DUT towards the phantom, 0 mm gap..



Pic. 7: Test position 5, DUT towards the phantom, 0 mm gap.