

## INTERNAL PHOTOGRAPHS

Internal View

(Battery Pack and Rear Cover are removed)



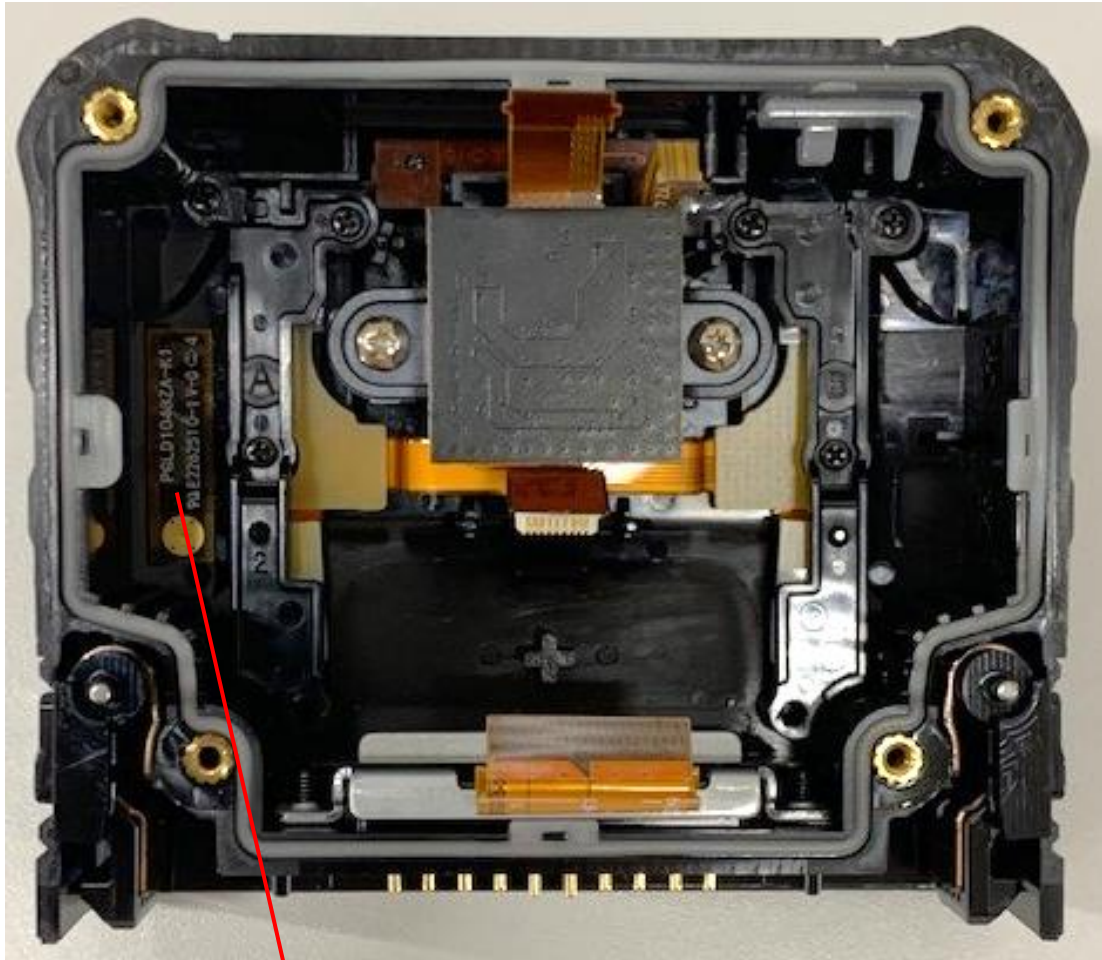
### Internal View

(Battery Pack, Rear Cover, and Main Board are removed)



Internal View

(Battery Pack, Rear Cover, Main Board, and Sub Board are removed)



FPC  
Antenna

Main Board





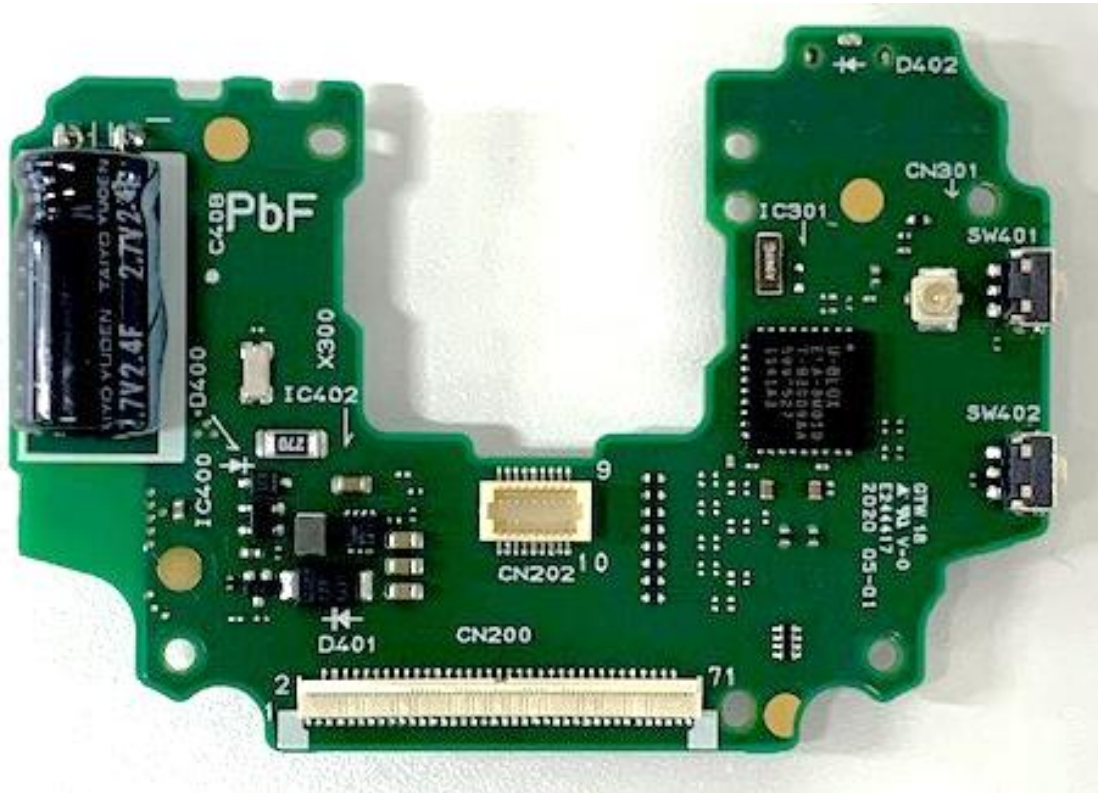
Main Board Back Side



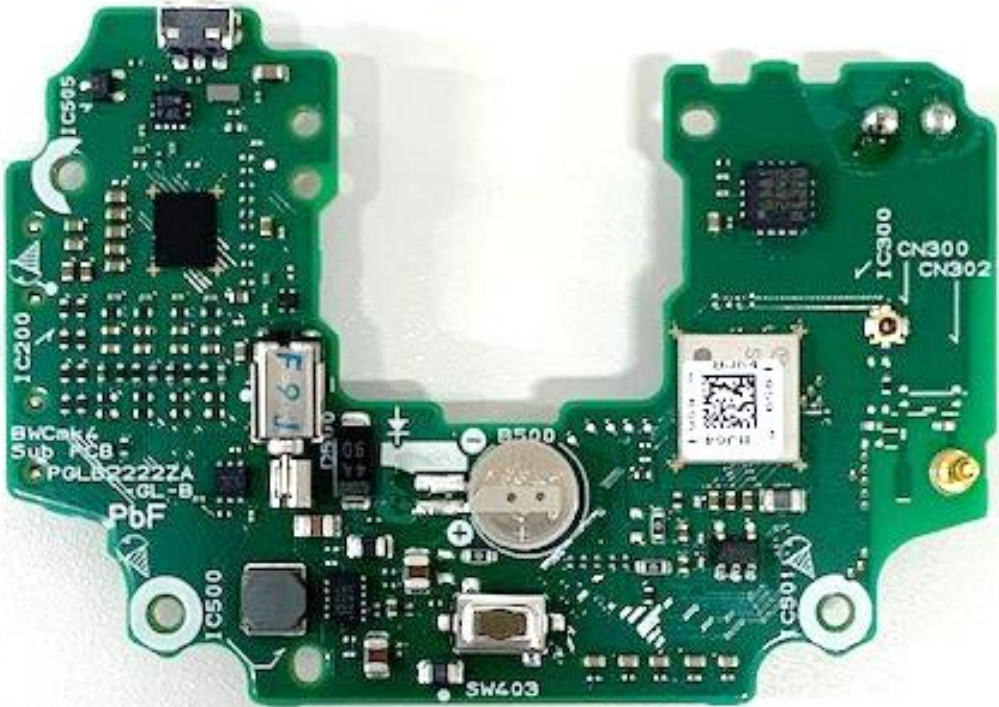
Main Board Back Side  
(Magnetic Sheet is removed)



Sub Board



Sub Board Back side





RF Portion



Contact

Pattern  
Antenna

FPC  
Antenna