

## 1.2 Antenna Configuration

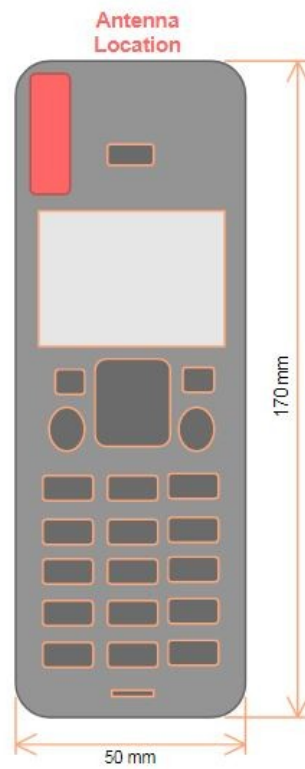


Fig. 1: Antenna location of the EUT.

## Appendix A - Pictures

### Pictures of the EUT



Pic. 1: Front and right side views of the device under test.



Pic. 2: Back and left side views of the device under test.



Fig. 13: Pictures of the used headset RP-TCA430.

### Pictures of Test Positions of the EUT



Pic. 3: Cheek position, left side.



Pic. 4: Tilted position, left side.



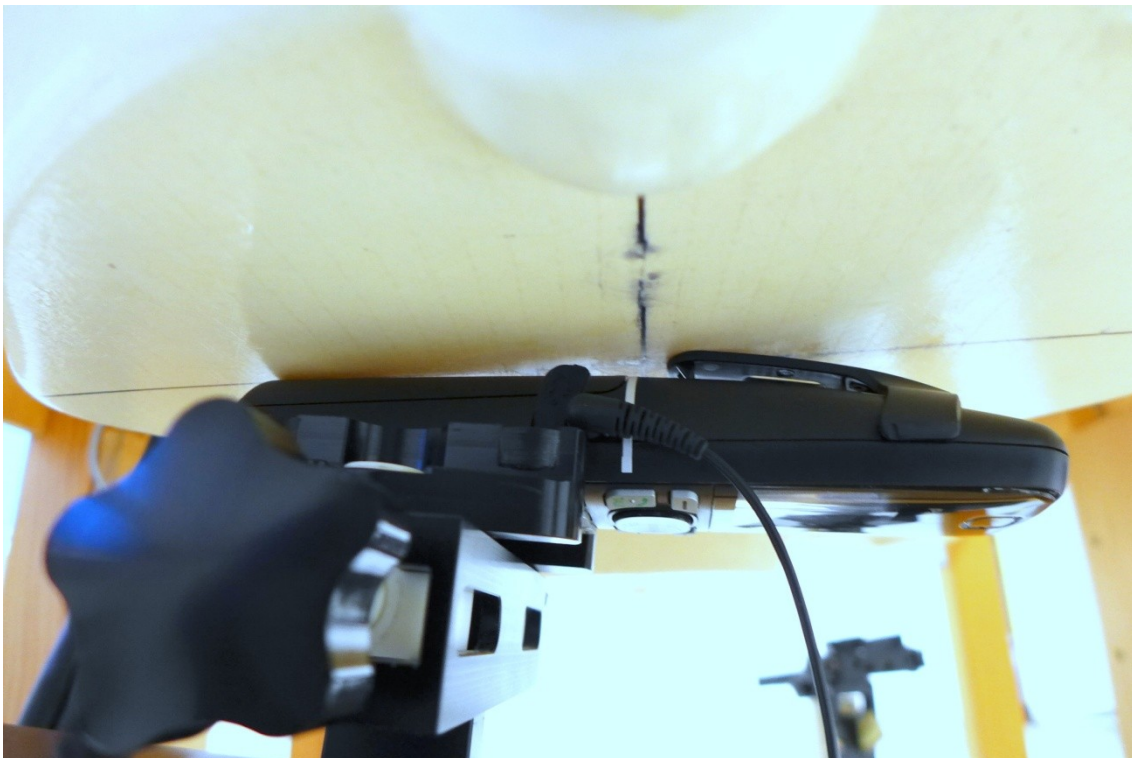
Pic. 5: Cheek position, right side.



Pic. 6: Tilted position, right side.



*Pic. 7: Test position – front side, 0mm distance to phantom.*



*Pic. 8: Test position – back side, 0mm distance to phantom.*